

Land Use

- General Agriculture
- Orchards
- Nurseries

- Barren
- Dunes
- Native Vegetation
- Grassland
- Forest

- Non Reserve Open Space
- Reserve Open Space

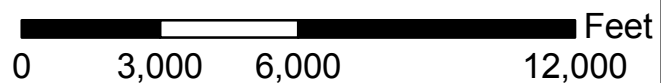
- Meadow/Marsh
- Riparian & Willow
- Streams & Creeks
- Parks
- Water Quality Basin

- Proposed Developed Area
- Existing Developed Area
- Casitas
- Estates
- Rural Residential

- Golf Residential
- Golf Resort
- Golf Planned

- Quarry
- Rocks, Cliffs & Outcrop
- Transportation

- Restoration Area
- Catchment Boundary
- Rancho Mission Viejo Boundary

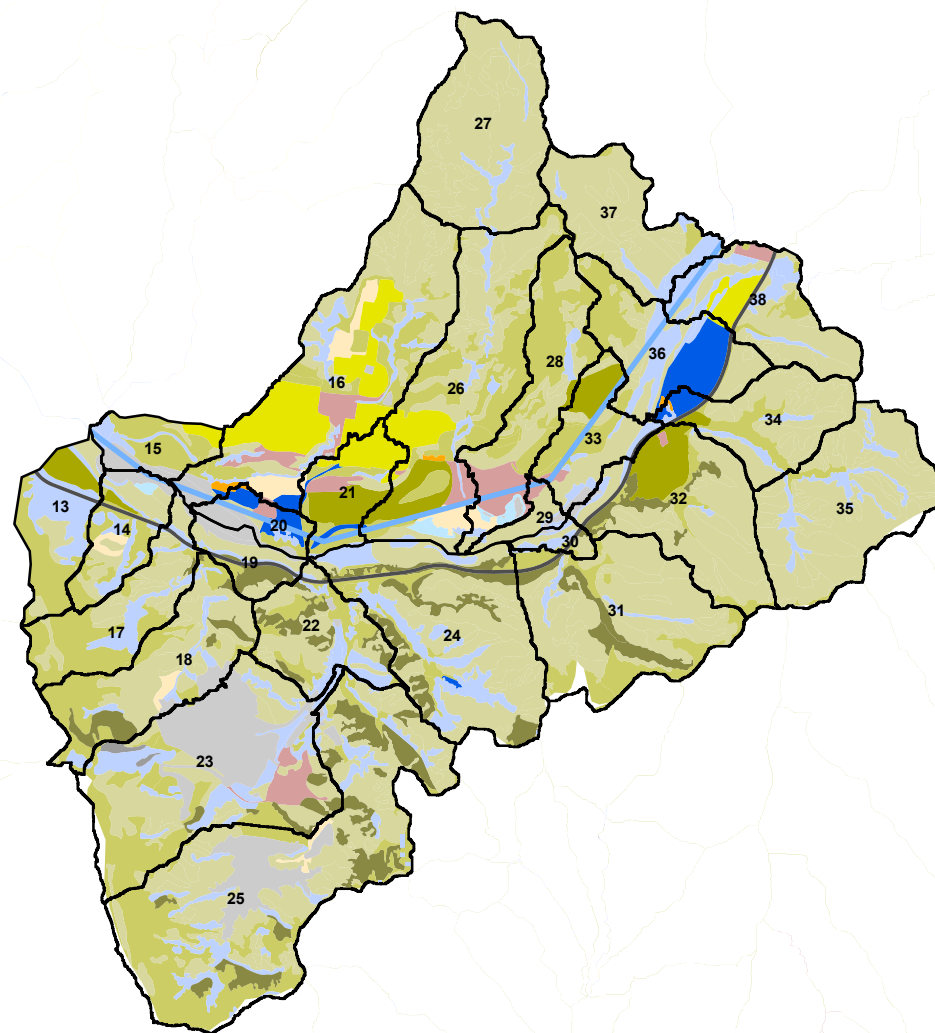


**Figure 4-6
Pre- and Post-Development
Land Uses in Central San Juan
and Trampas Sub-basin**

Water Quality Management Plan
Rancho Mission Viejo



PRE-DEVELOPMENT



B10M POST-DEVELOPMENT

