



The  
Freshwater  
Trust®

# **SB 88 Monitoring Method and Alternative Compliance Plan**

*Validation and Refinement Progress*

Stephanie Tatge  
Ecosystem Services Analyst  
February 27, 2020

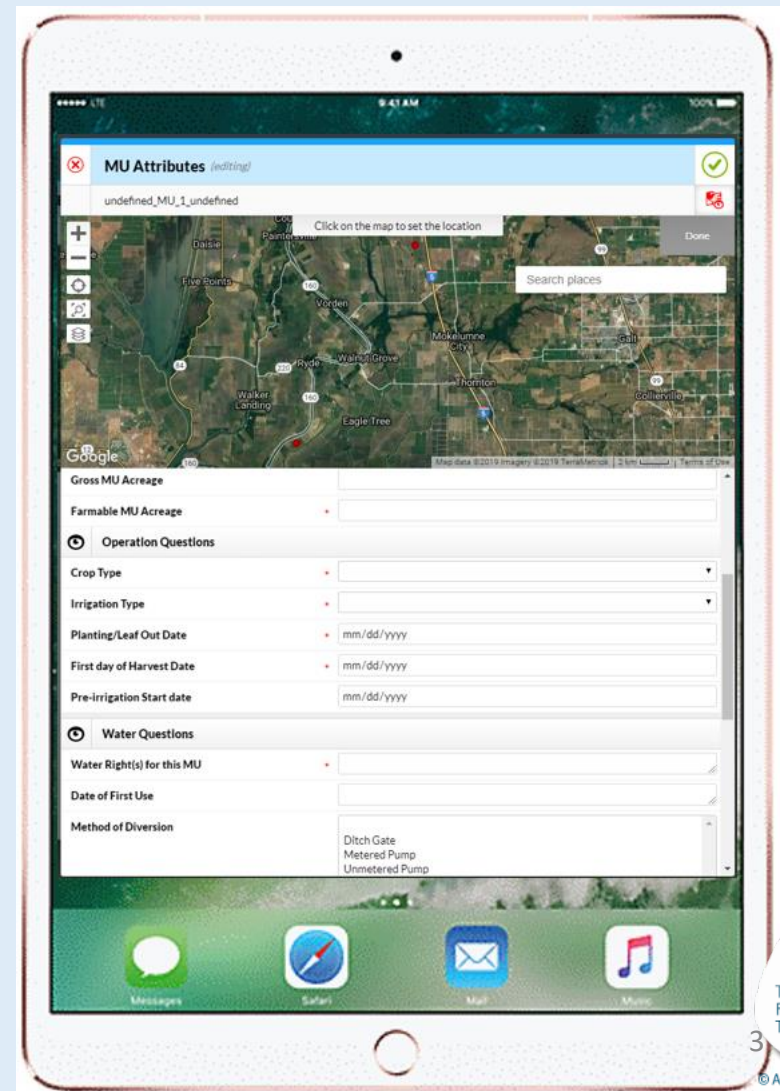
# Presentation Contents

1. Introduction & MM/ACP Overview
2. MM/ACP Progress:
  1. Data Collection Systems
  2. Scaling Study
  3. Modelling Refinement & Sensitivity
3. Questions and Discussion



# Data Collection Systems: Pilot in Progress

- Fulcrum App can be used on mobile devices with or without internet connection
- Dropdown menus & standardization increase quality of input data
- Uses maps of farm operations, verified by landowners, for POD and POU relationships and conveyance



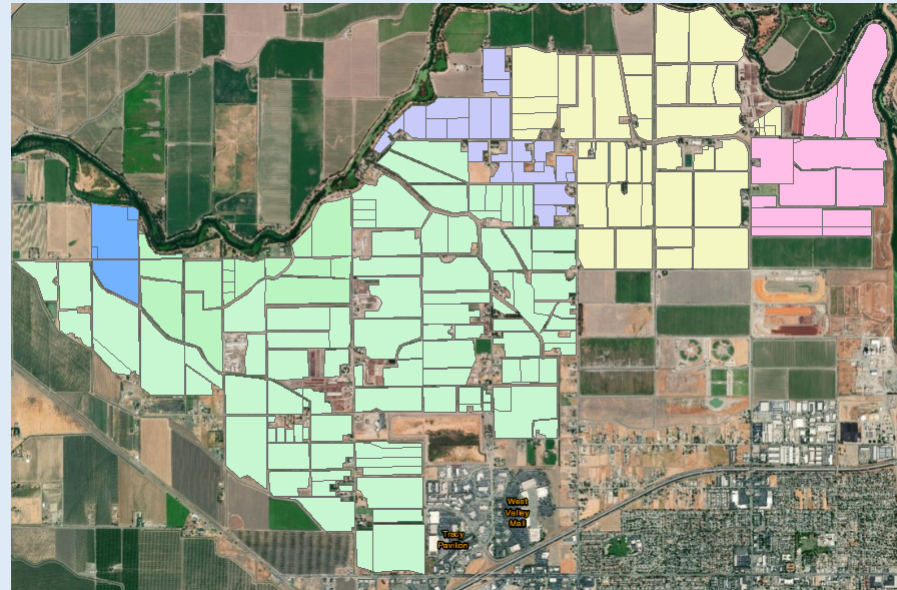
# Remotely-sensed data for scalability

- Test the theory that participant-supplied data can be replaced with remotely-sensed data, if the MM/ACP is scaled
- Identify gaps between remotely-sensed data and user data:
  - Field boundaries
  - Crop type
  - Irrigation type
  - Planting and harvest dates
  - POD/POU and eWRIMS data



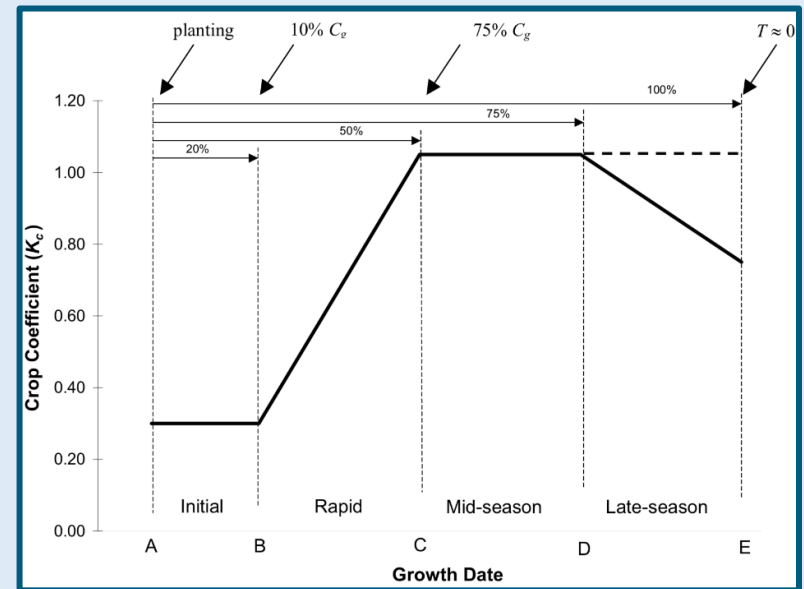
# Testing Scalability of MM

- Naglee Burk in the southern Delta was added to the MM/ACP
- 170 irrigated APNs spanning approximately 4,870 acres
- Naglee Burk and other large clients help us understand scalability.
- We will quantify the accuracy of USDA CropScape and automated field delineations & polygons used in Open ET



# Modelling Refinements & Sensitivity

- Calculating immature orchard  $K_c$  curves: TFT is increasing resolution for irrigation demand volumes for immature orchards (many young orchards in Naglee Burk)
- Planting & harvest date sensitivity: TFT is quantifying the sensitivity of irrigation demands of various crops by comparing reported planting & harvest dates to default CUP+ planting & harvest dates



# Questions & Discussion

