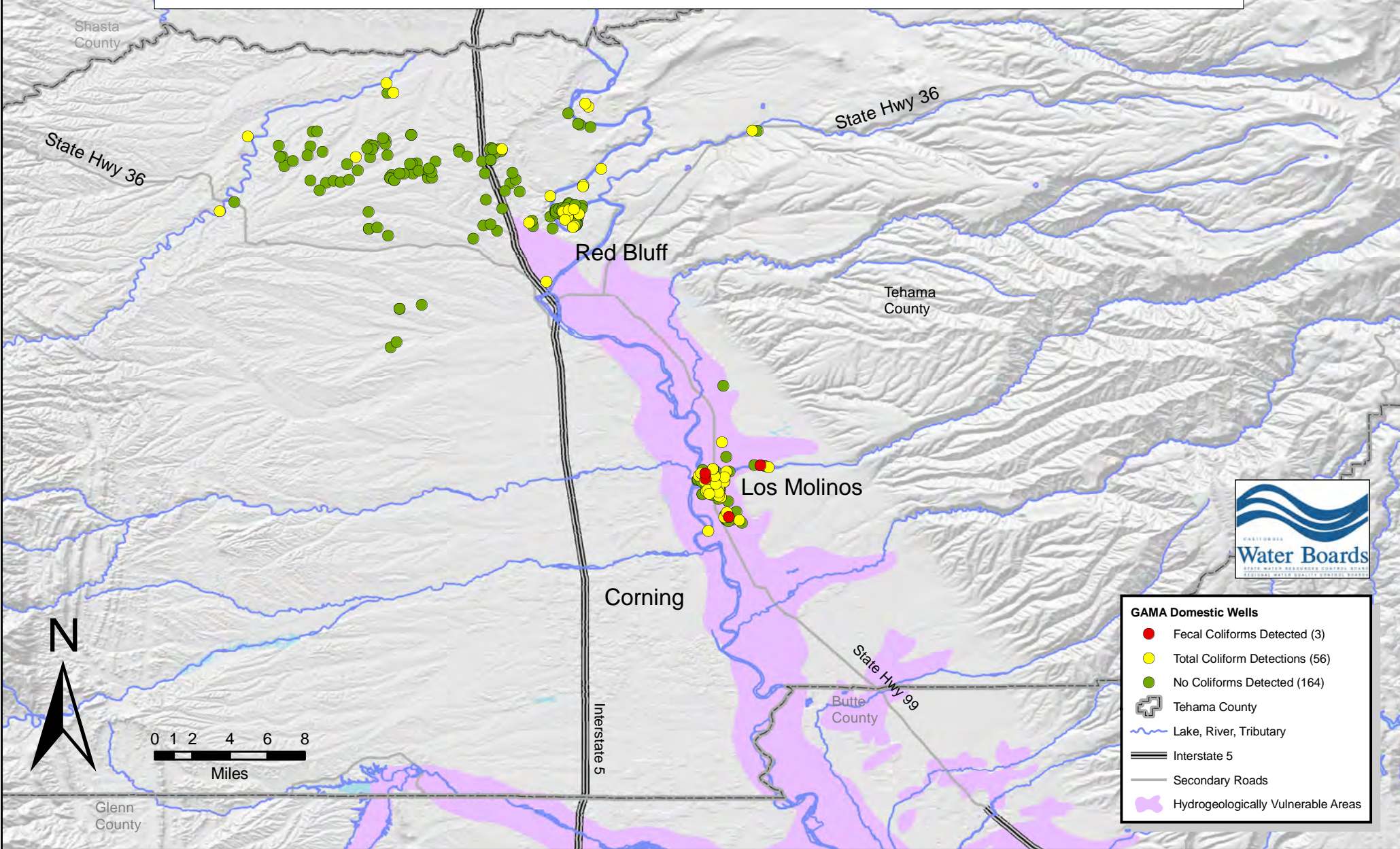


Groundwater Ambient Monitoring and Assessment (GAMA) Domestic Well Project Tehama County Focus Area, 2005 Coliform in Domestic Wells



- GAMA Domestic Wells**
- Fecal Coliforms Detected (3)
 - Total Coliform Detections (56)
 - No Coliforms Detected (164)
 - + Tehama County
 - ~ Lake, River, Tributary
 - Interstate 5
 - Secondary Roads
 - Hydrogeologically Vulnerable Areas

