

# Sustainable Groundwater Management Act: Delta-Mendota Subbasin

Proposed Resolution 2026-XXX

April 7, 2026

Item No. 3



Office of Sustainable Groundwater Management

# Language Interpretation In Person

## Interpretación en persona

### ਵਿਅਕਤੀਗਤ ਤੌਰ 'ਤੇ ਪੰਜਾਬੀ ਭਾਸ਼ਾ ਵਿੱਚ ਵਿਆਖਿਆ

Please visit the table outside this room for a headset or if you have technical difficulties.

---

Diríjase a la mesa fuera de esta sala para solicitar un auricular o si tiene dificultades técnicas.

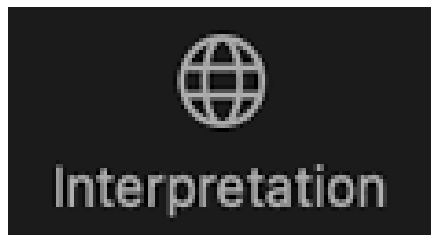
---

ਇਸ ਕਮਰੇ ਦੇ ਬਾਹਰ ਮੇਜ਼ 'ਤੇ ਜਾਓ ਜੇਕਰ ਤੁਹਾਨੂੰ ਹੈੱਡਸੈੱਟ ਦੀ ਲੋੜ ਹੈ ਜਾਂ ਤੁਹਾਨੂੰ ਕੋਈ ਤਕਨੀਕੀ ਮੁਸ਼ਕਲ ਪੇਸ਼ ਆ ਰਹੀ ਹੈ।



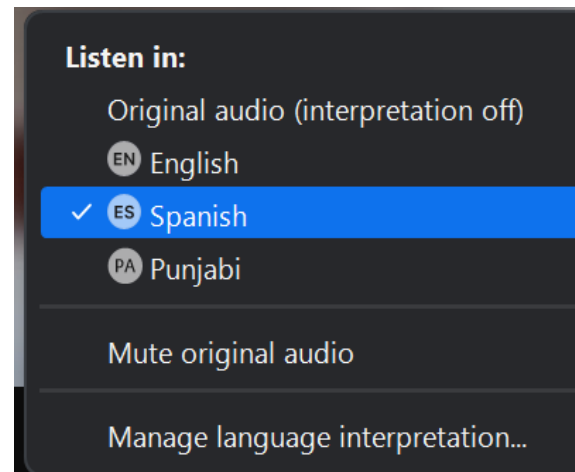
## Opción de Interpretación en Zoom

- Seleccione el icono de interpretación desde los controles de la pantalla
- Seleccione español (*Spanish*)
- Seleccione la opción para poner el audio original en silencio (*Mute Original Audio*)




## Language Interpretation through Zoom

- Click the Interpretation icon in your meeting controls
- Select Spanish OR English OR Punjabi
- Mute Original Audio



## ਜ਼ੂਮ ਰਾਹੀਂ ਭਾਸ਼ਾ ਅਨੁਵਾਦ

- ਆਪਣੇ ਮੀਟਿੰਗ ਕੰਟਰੋਲਾਂ ਵਿੱਚ ਅਨੁਵਾਦ ("Interpretation") ਆਈਕਨ ਤੇ ਕਲਿੱਕ ਕਰੋ
- ਸਪੈਨਿਸ਼ ਜਾਂ ਅੰਗਰੇਜ਼ੀ ਜਾਂ ਪੰਜਾਬੀ ਚੁਣੋ
- ਮੂਲ ਆਡੀਓ ਨੂੰ ਮਿਊਟ (ਆਵਾਜ਼ ਬੰਦ) ਕਰੋ



PI Presentation in English's screen

PE Presentacion Espanol's screen

PI Presentation in Punjabi's screen

To view slides in your preferred language, click on "Presentation in English," "Presentación en español," or "Presentation in Punjabi" at the top of the screen.

Para ver las diapositivas en su idioma preferido, haga clic en "Presentation in English", "Presentación en español", o "Presentation in Punjabi" en la parte superior de la pantalla.

ਸਲਾਈਡਾਂ ਨੂੰ ਆਪਣੀ ਪਸੰਦੀਦਾ ਭਾਸ਼ਾ ਵਿੱਚ ਦੇਖਣ ਲਈ, ਸਕ੍ਰੀਨ ਦੇ ਉੱਪਰ "Presentation in English," "Presentación en español," ਜਾਂ "Presentation in Punjabi" 'ਤੇ ਕਲਿੱਕ ਕਰੋ।

For technical assistance, email

**[Board.Clerk@waterboards.ca.gov](mailto:Board.Clerk@waterboards.ca.gov)**

---

Si necesita ayuda técnica, envíe un mensaje electrónico a

**[Board.Clerk@waterboards.ca.gov](mailto:Board.Clerk@waterboards.ca.gov)**

---

ਤਕਨੀਕੀ ਸਹਾਇਤਾ ਲਈ, ਇਸ ਵੈੱਬਸਾਈਟ 'ਤੇ ਈਮੇਲ ਕਰੋ

**[Board.Clerk@waterboards.ca.gov](mailto:Board.Clerk@waterboards.ca.gov)**

# Sustainable Groundwater Management Act: Delta-Mendota Subbasin

Item to consider returning the  
Subbasin to DWR's jurisdiction



Office of Sustainable Groundwater Management



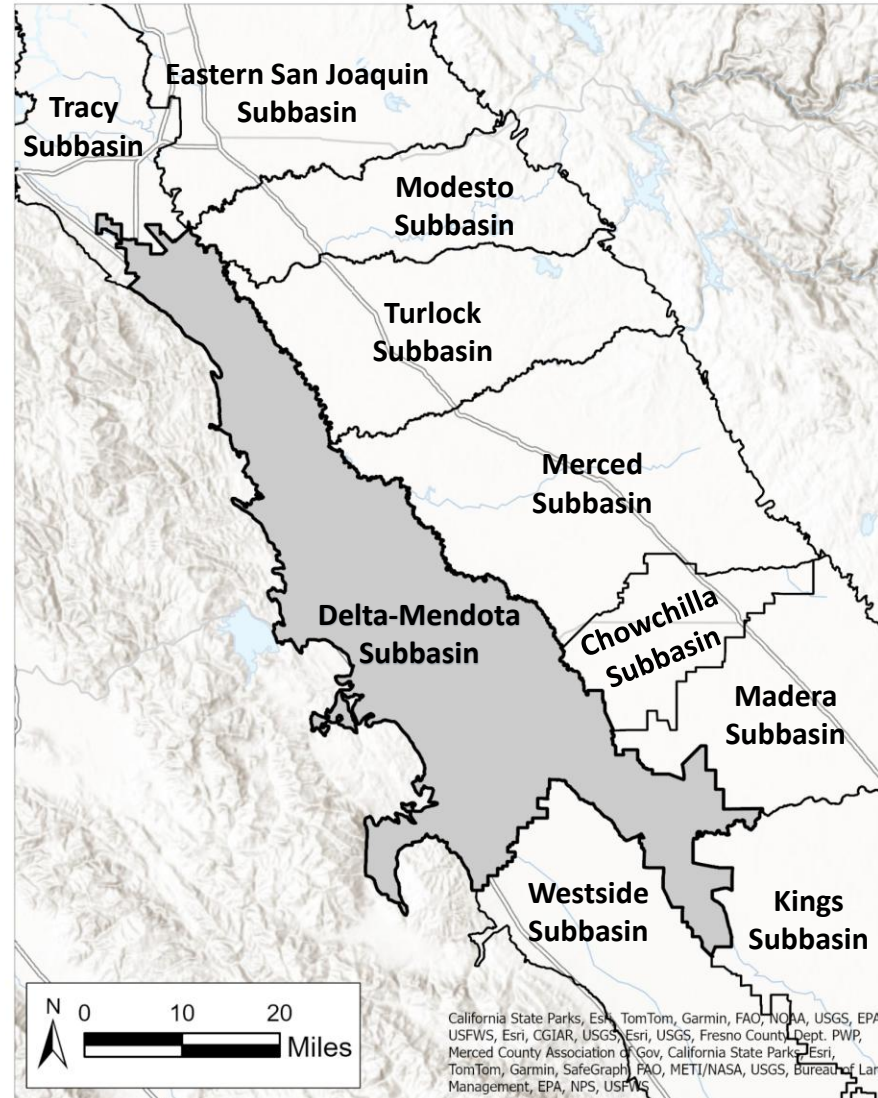
# Staff Presentation

- 1. Delta-Mendota Subbasin Background**
- 2. SGMA Process in the Delta-Mendota Subbasin**
- 3. GSP Revisions of Deficiencies**
- 4. Staff Recommendations to the Board**

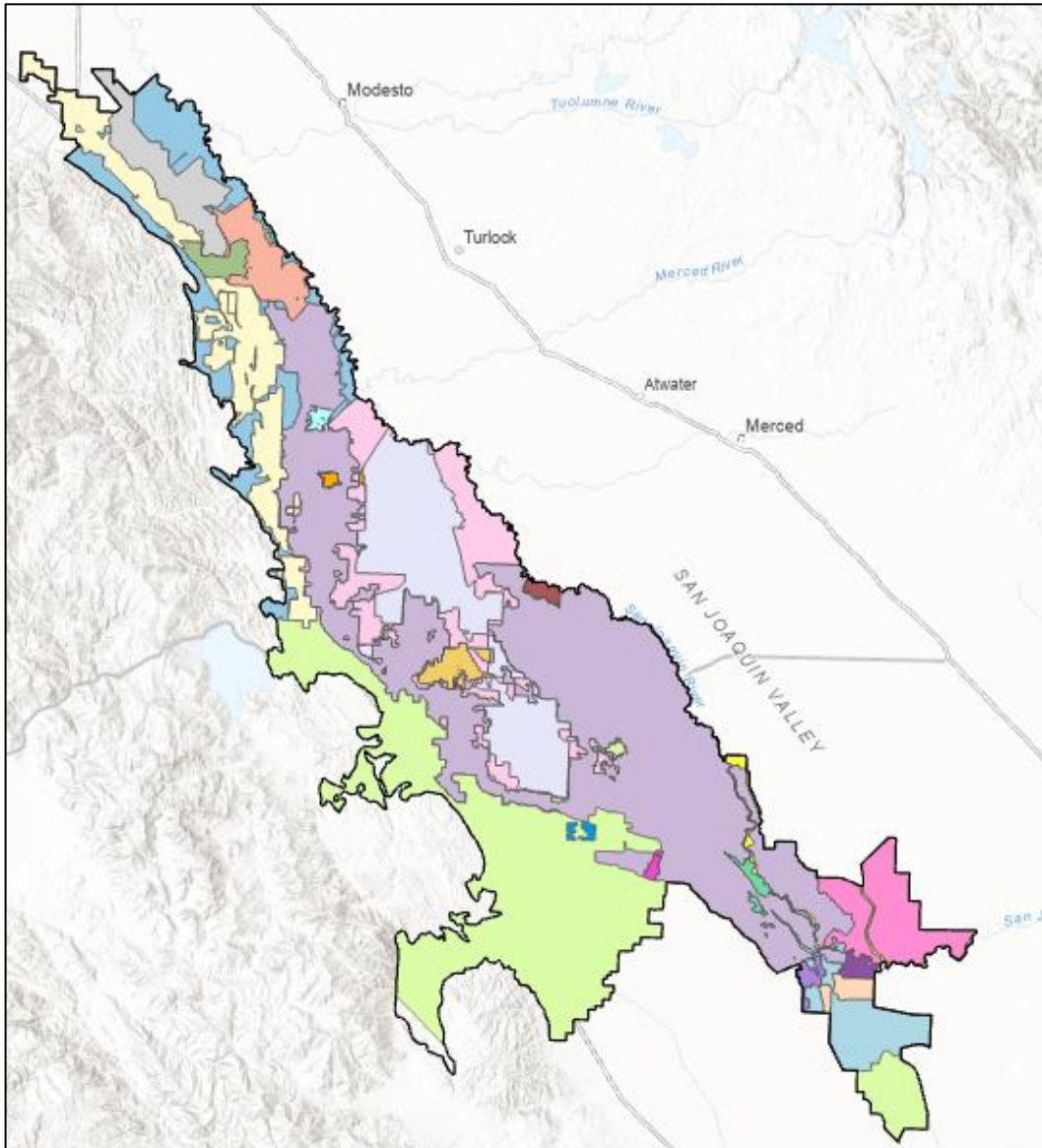
# Delta-Mendota Subbasin Background



# Delta-Mendota Subbasin Physical Setting



# Groundwater Sustainability Agencies



**There are 23 GSAs in 7 GSA Groups:**

**Central Delta-Mendota GSA Group**

- Widren Water District
- Central Delta-Mendota
- Oro Loma Water District

**Northern Delta-Mendota GSA Group**

- City of Patterson
- DM-II
- Northwestern Delta-Mendota
- Patterson Irrigation District
- West Stanislaus Irrigation District

**Aliso Water District GSA Group**

- Aliso Water District

**Fresno County GSA Group**

- County of Fresno – A
- County of Fresno – B

**Farmers Water District GSA Group**

- Farmers Water District

**San Joaquin River Exchange Contractors GSA Group**

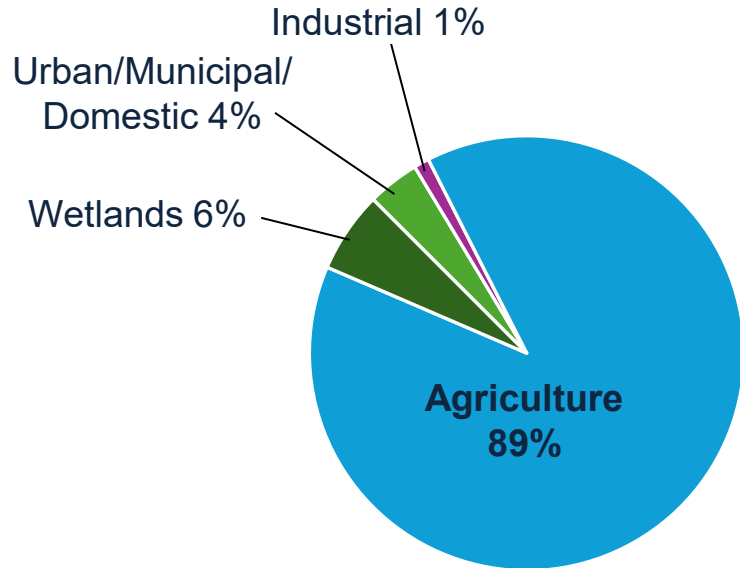
- City of Dos Palos
- City of Firebaugh
- City of Gustine
- City of Los Banos
- City of Mendota
- City of Newman
- County of Madera
- SJ River Exchange Contractors
- Turner Island Water District
- County of Merced
- County of Fresno – B

**Grassland GSA Group**

- County of Merced
- Grassland

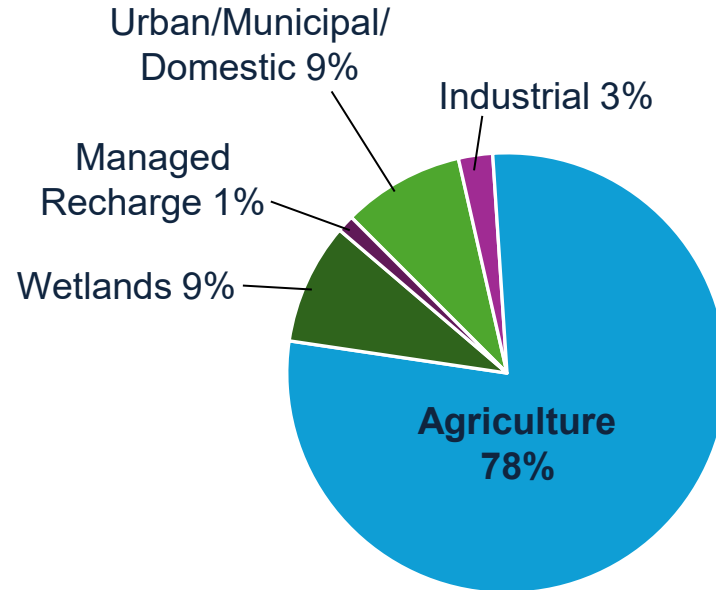
# Agriculture uses the majority of groundwater and the Delta-Mendota Subbasin has experienced overdraft

**Water Year 2022  
Critically Dry**



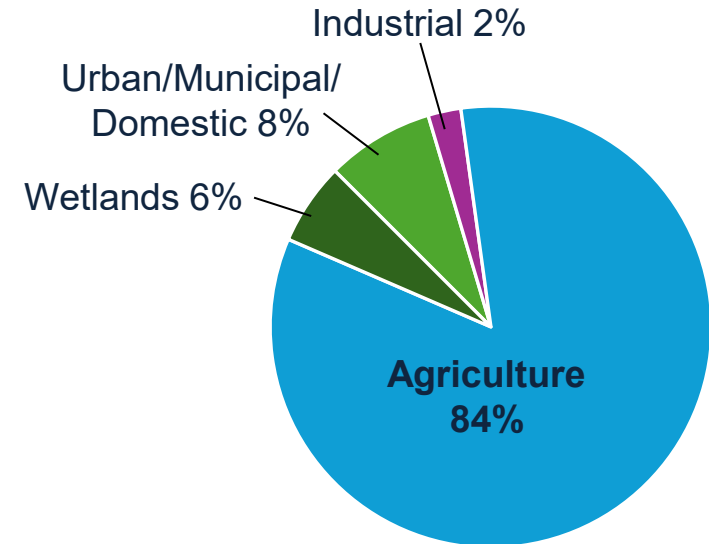
**Total: 563,900 acre-feet**

**Water Year 2023  
Wet**



**Total: 231,300 acre-feet**

**Water Year 2024  
Above Normal**



**Total: 278,400 acre-feet**

**Annual averages from Water Year 2003 to Water Year 2023:**

Groundwater Extraction: 447,000 acre-feet per year

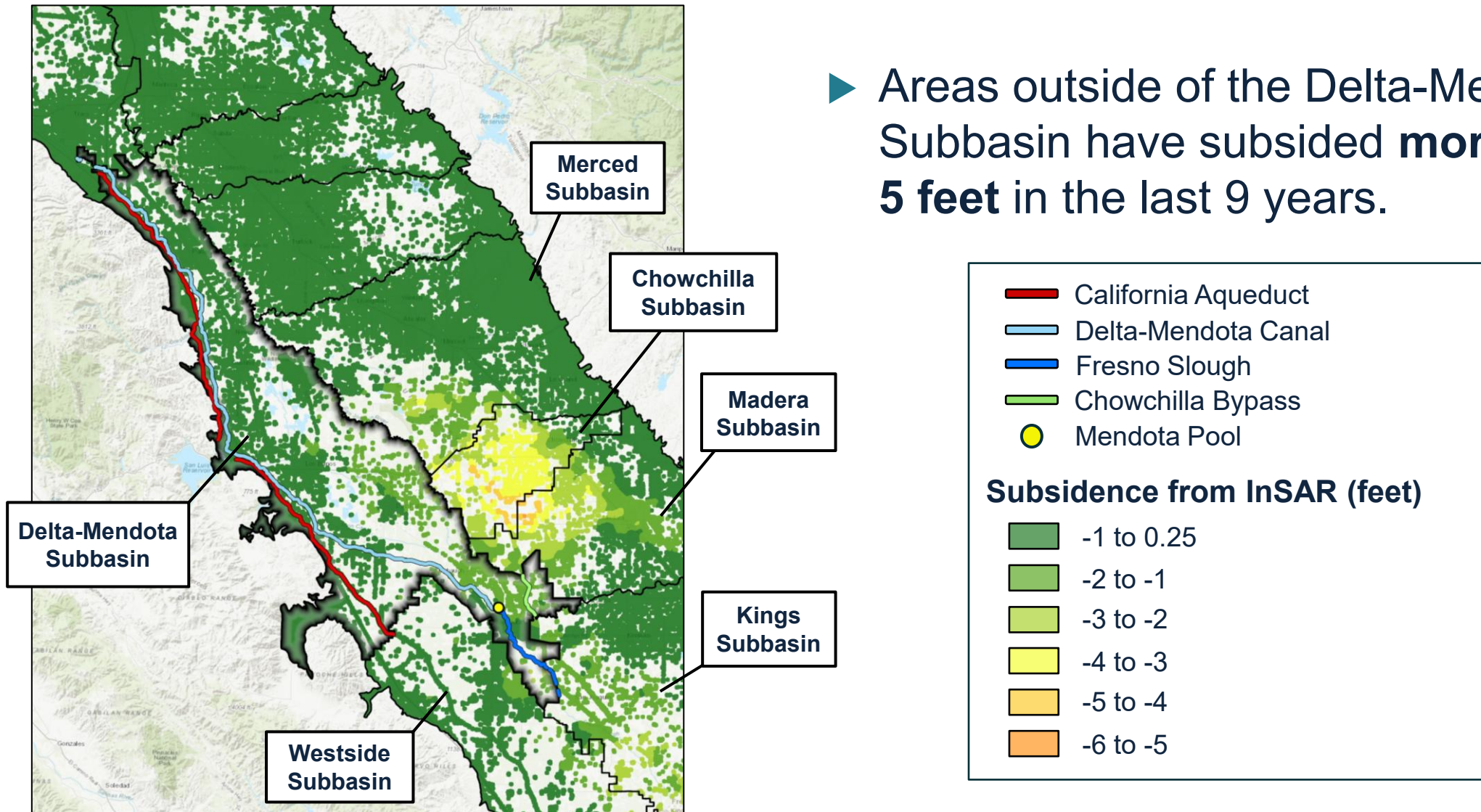
Natural & Artificial Recharge: 374,000 acre-feet per year

**Overdraft: 140,000 acre-feet per year**

Source: 2024 GSP

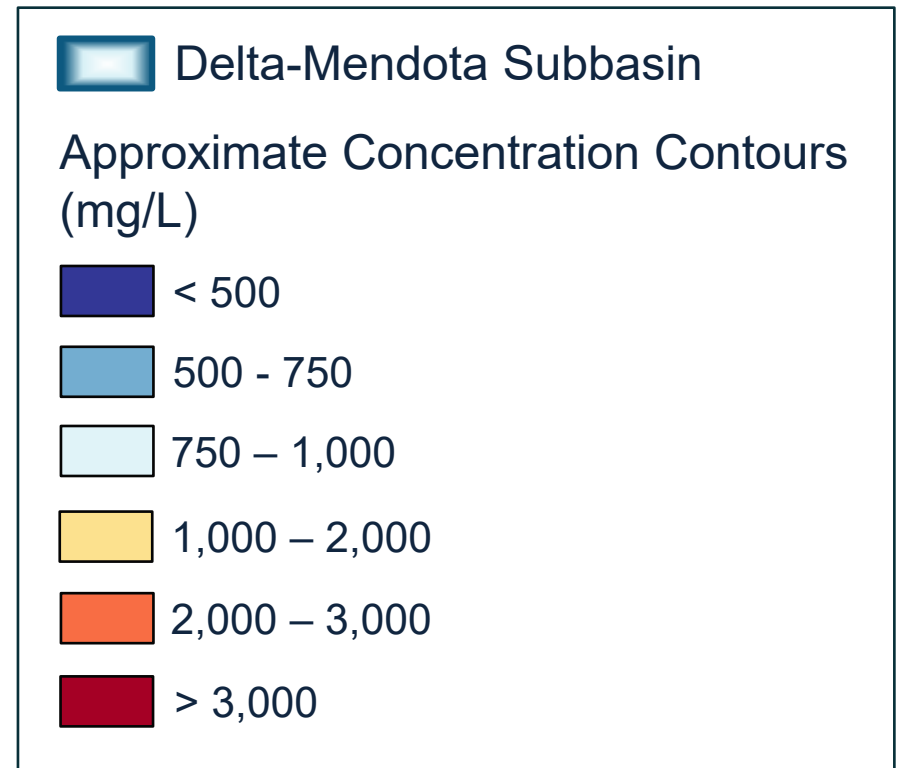
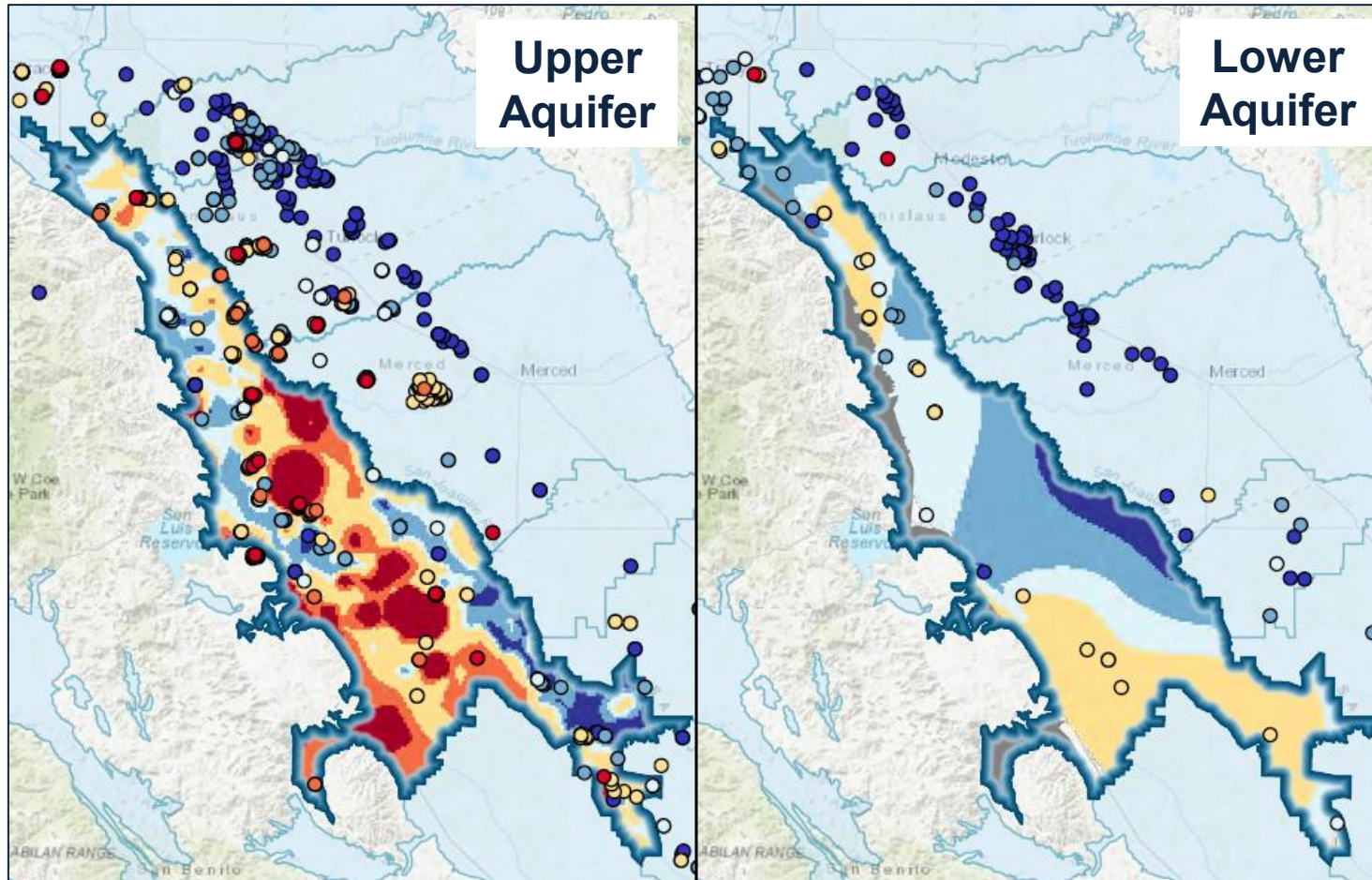
# Subsidence is a regional issue

- ▶ Areas outside of the Delta-Mendota Subbasin have subsided **more than 5 feet** in the last 9 years.



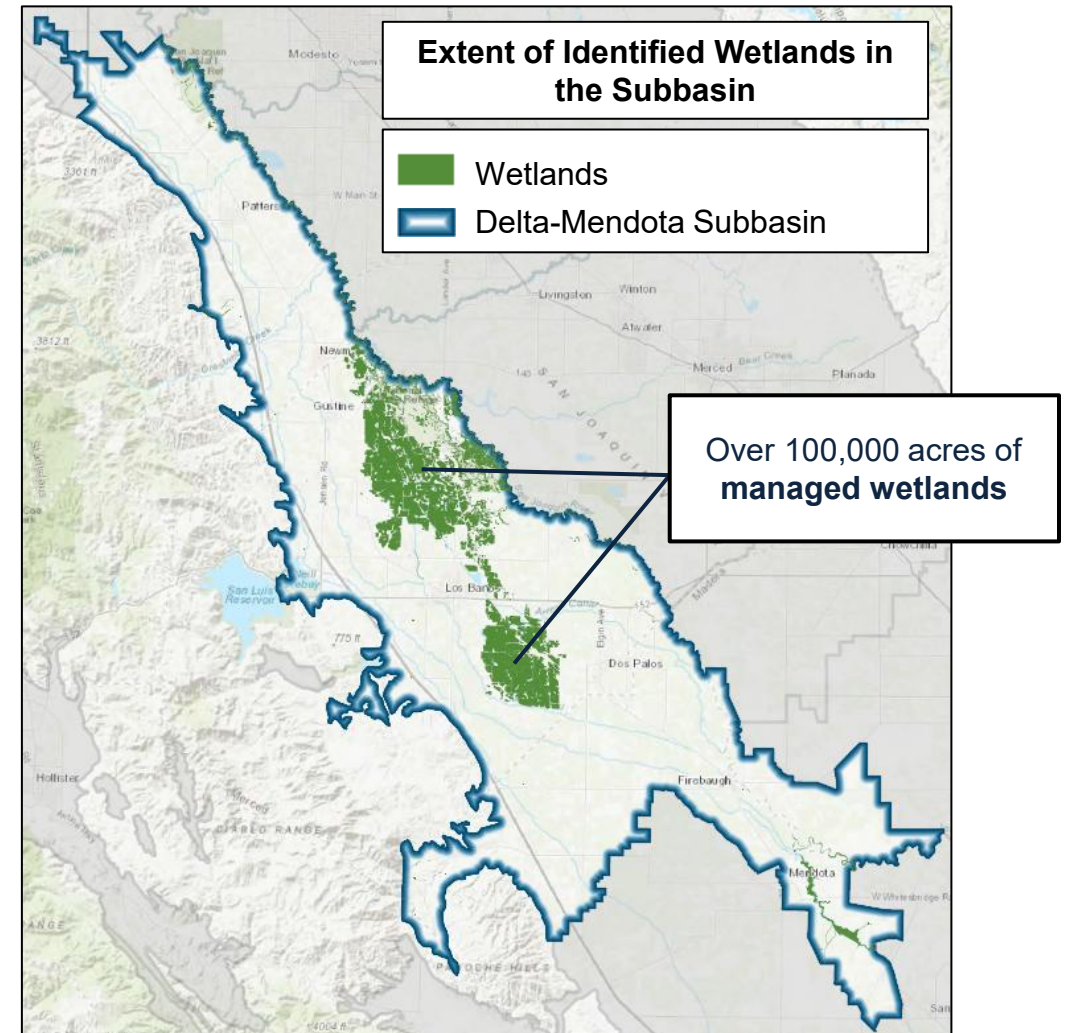
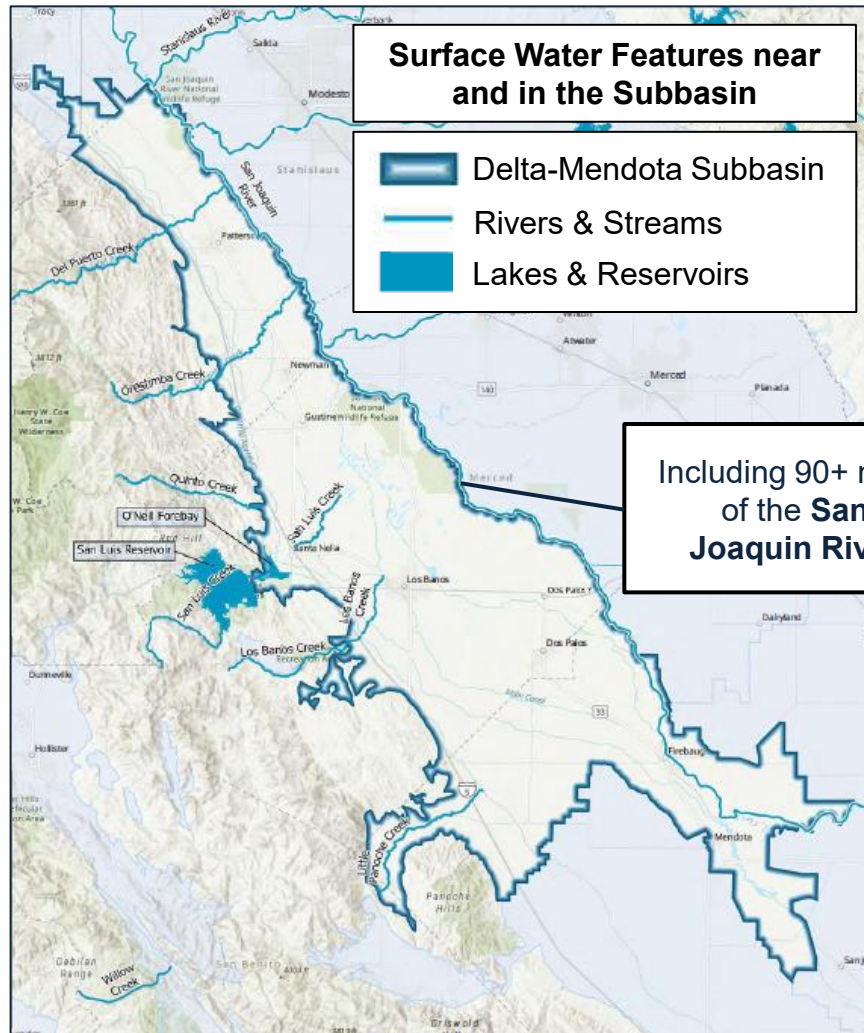
# Water quality issues in the subbasin

- ▶ Approximately 54% of wells sampled between 1950-2014 exceeded the SMCL TDS limit (1,000 mg/L)

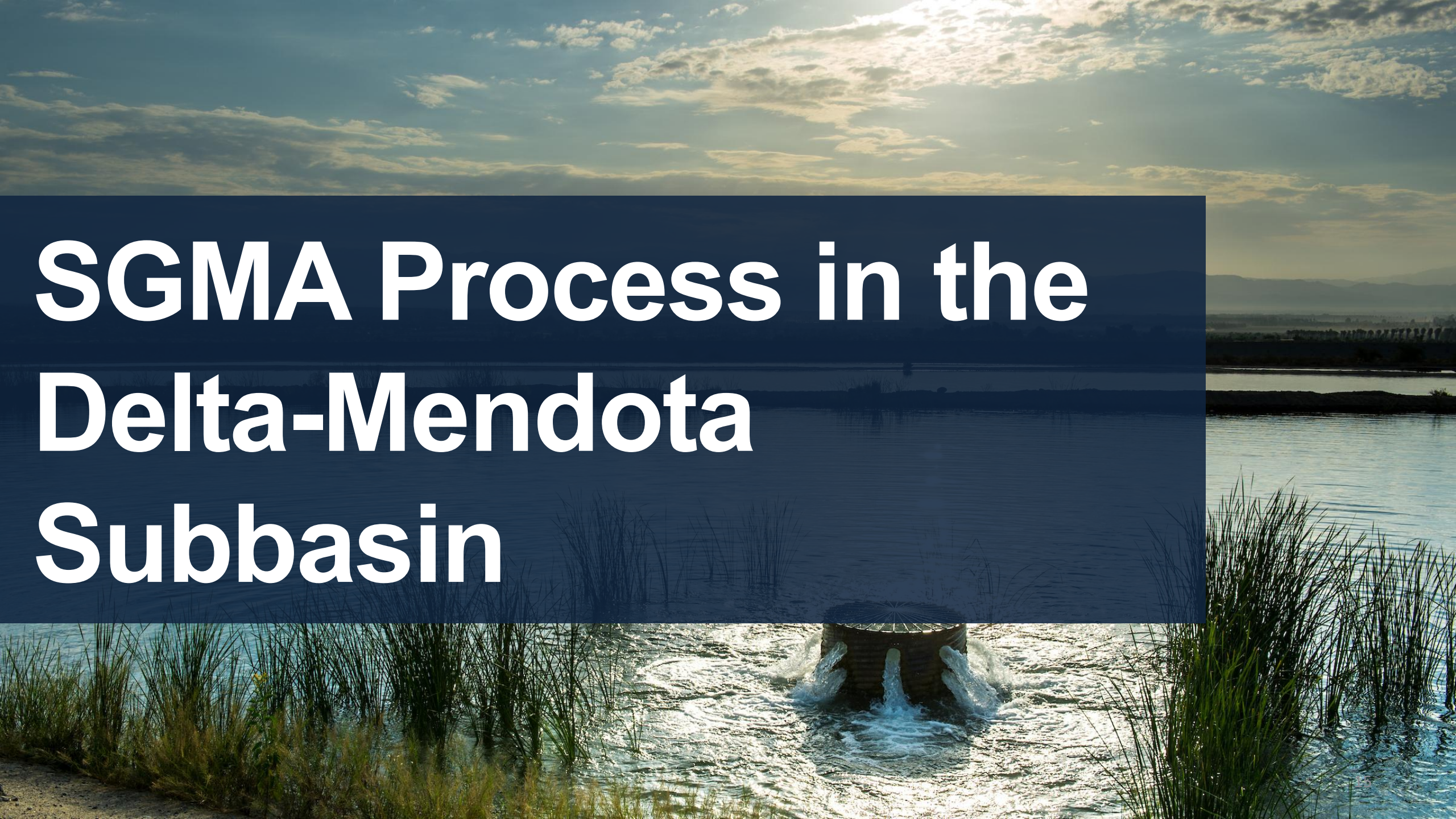


Modified after 2024 GSP, Figure GWC-32

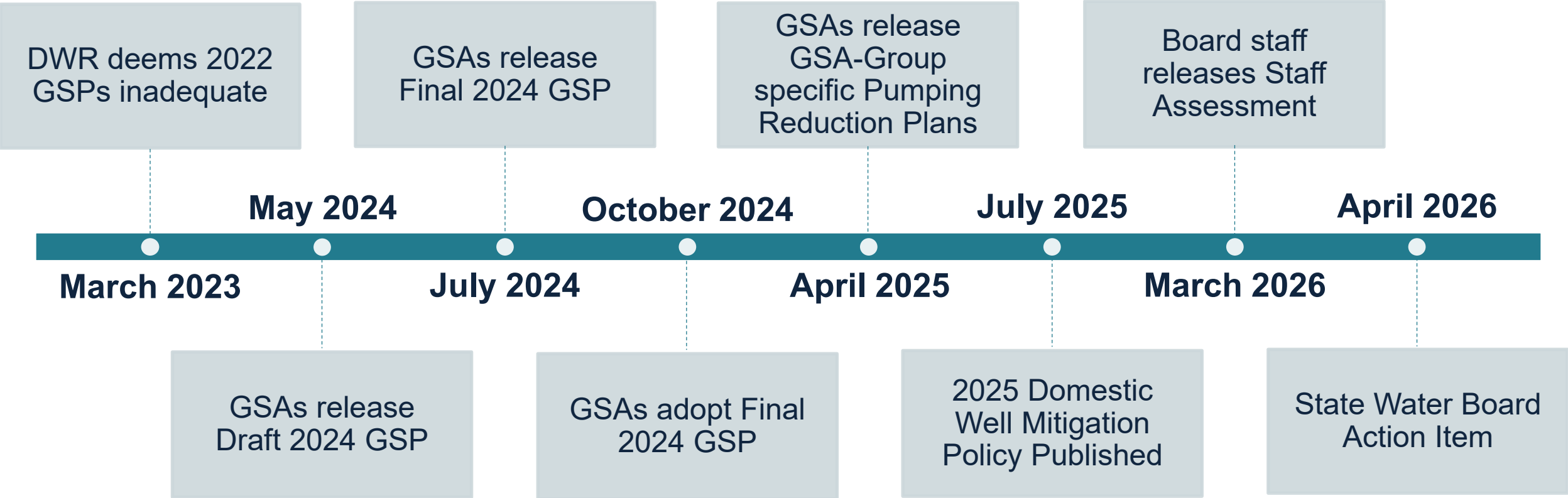
# The subbasin contains over 100 miles of interconnected surface water



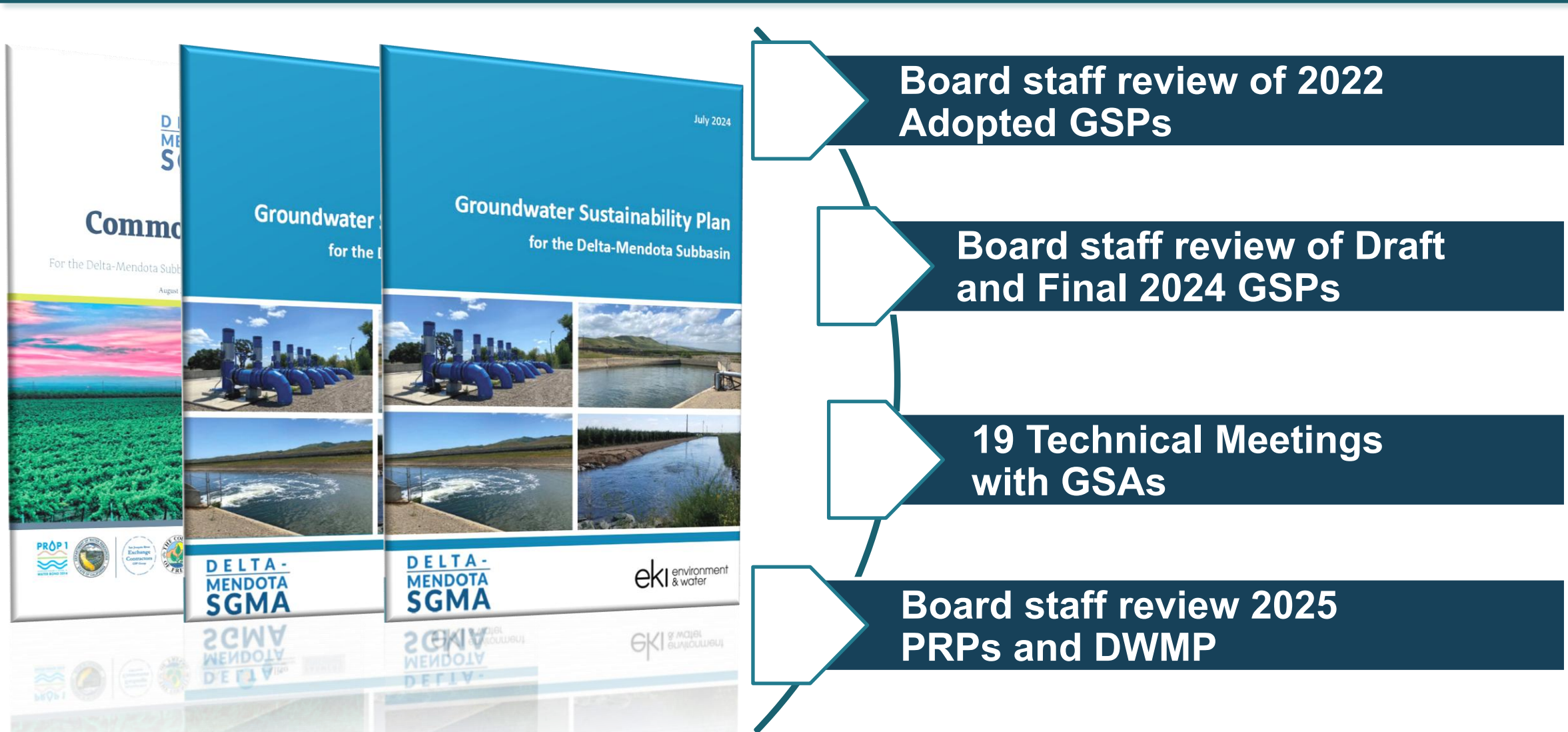
# SGMA Process in the Delta-Mendota Subbasin



# State Intervention Timeline



# Board staff reviewed eight GSPs since Inadequate determination



# GSP Revisions of Deficiencies



# 2024 Delta-Mendota Subbasin GSP



## Groundwater Levels

### Resolved

- Sustainable Management Criteria
- Overdraft
- Monitoring
- Mitigation
- MT relationships with other sustainability indicators

### Partially Resolved

- Sustainable Yield
- Demand Management



## Land Subsidence

### Resolved

- Sustainable Management Criteria
- Management Actions

### Partially Resolved

- Critical Infrastructure



## Water Quality

### Resolved

- Sustainable Management Criteria
- Undesirable Results
- Monitoring Network
- Mitigation



## Interconnected SW

### Resolved

- Identification of ISW
- Quantifying ISW Depletions

### Partially Resolved

- Qualitative Definitions
- Minimum Thresholds

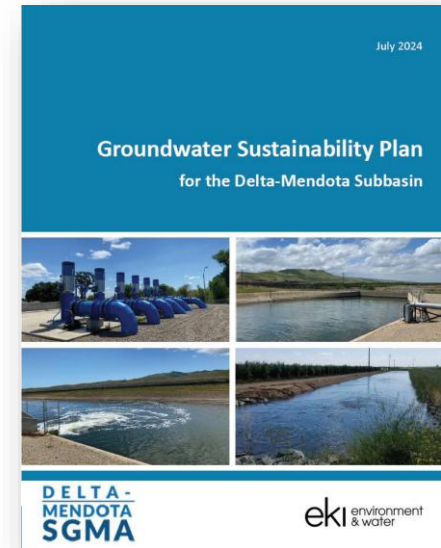
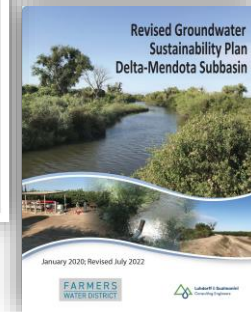
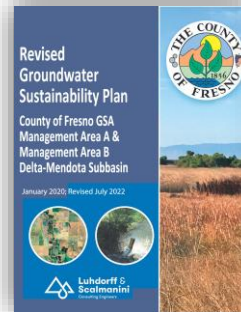
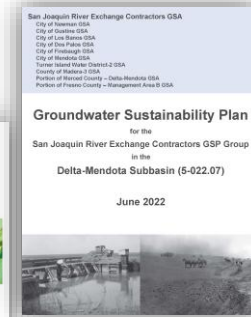
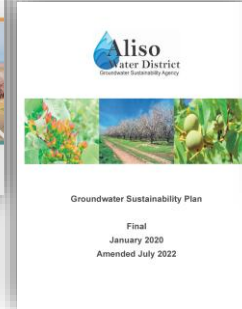
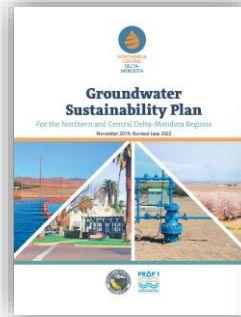


# The GSAs resolved coordination issues by adopting a single GSP

Consistent and clear undesirable result definitions

Consistent methodologies for establishing sustainable management criteria

Established basin-wide pumping reduction plans and mitigation policy







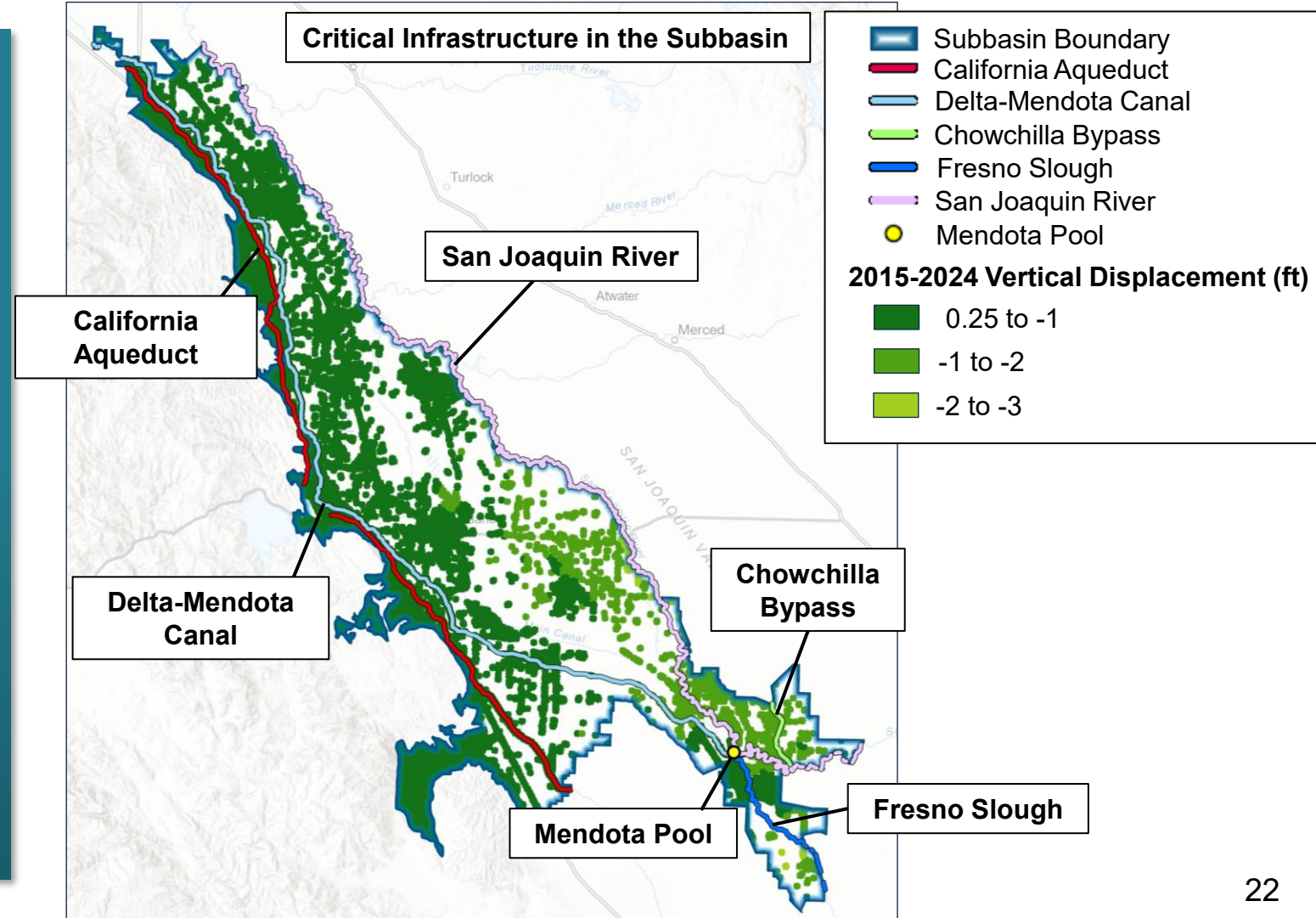
# The GSAs revised subsidence sustainable management criteria

Established rate of subsidence as minimum threshold

Includes management actions to address historic subsidence

Updated definition of critical infrastructure

Developed Subsidence Avoidance Plan



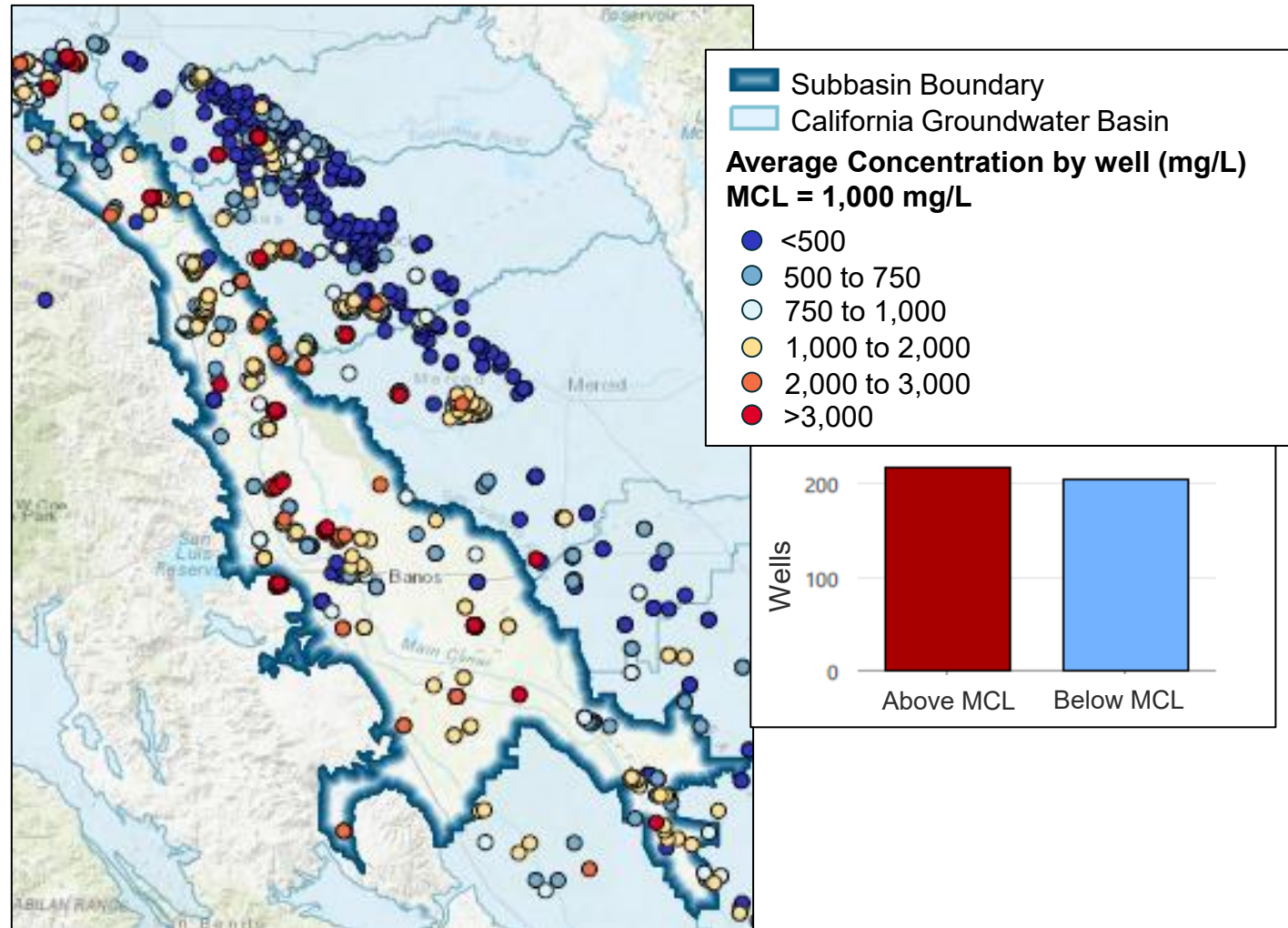
# The GSAs revised groundwater quality undesirable result definitions

Revised sustainable management criteria to be consistent with historic degradation

Included additional constituents of concern

Expanded monitoring network and increased frequency

Added domestic well mitigation for groundwater quality impacts





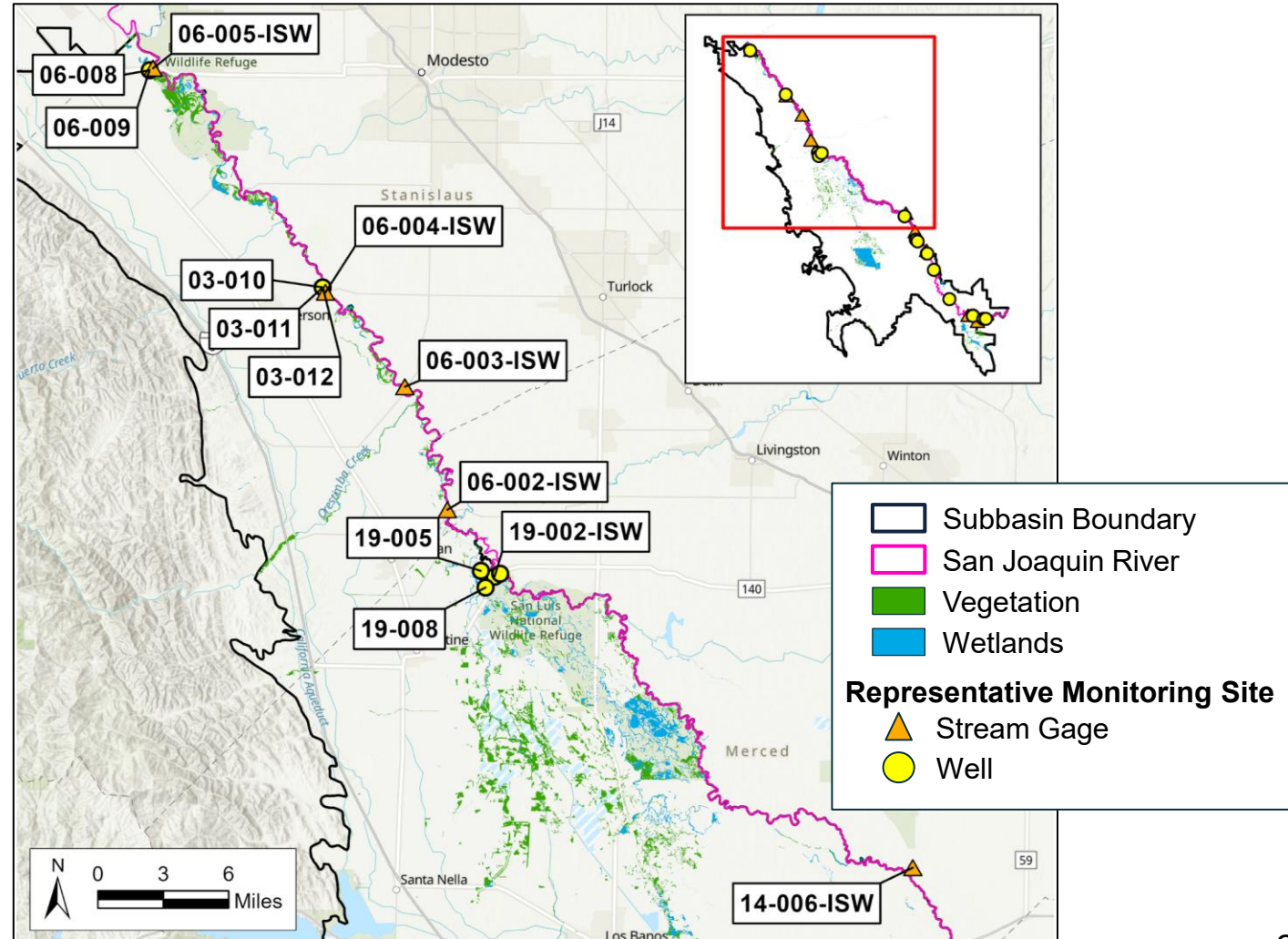
# The GSAs used monitoring data to further identify interconnected surface water

Used monitoring data to identify interconnected surface water

Established basin-wide depletions analytical model

Revised sustainable management criteria

Improved monitoring network and frequency



# Staff Recommendations for the Delta-Mendota Subbasin



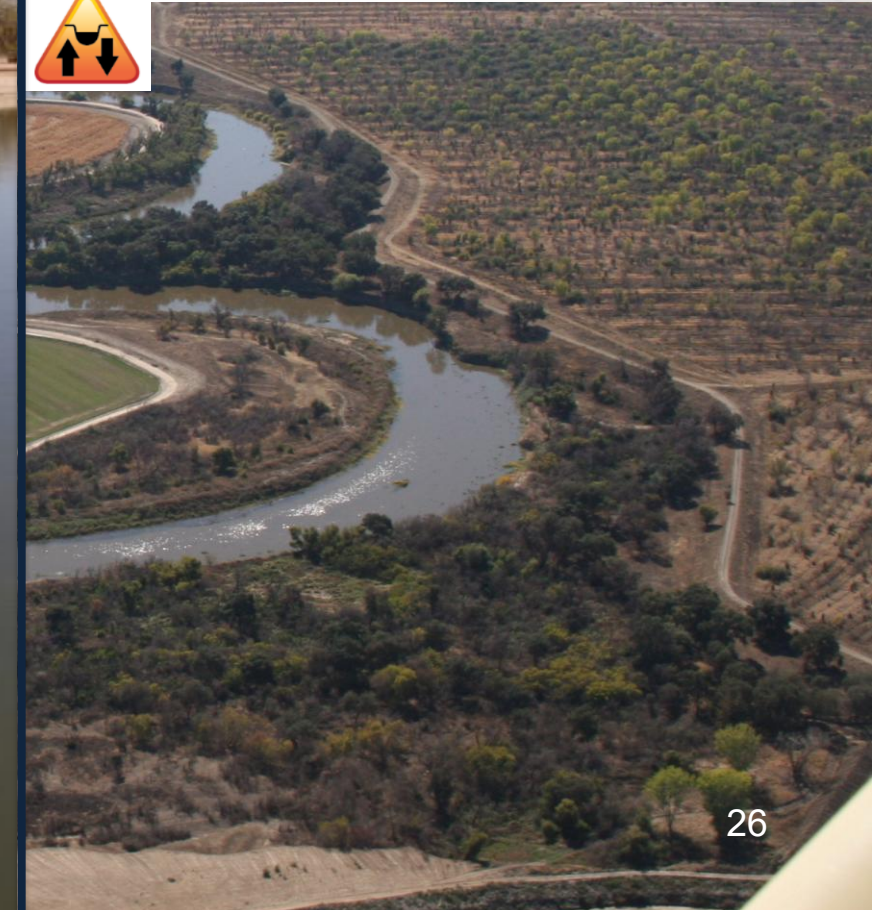
**Further refine the sustainable yield**



**Clarify critical infrastructure definitions**



**Revise interconnected surface water sustainable management criteria**



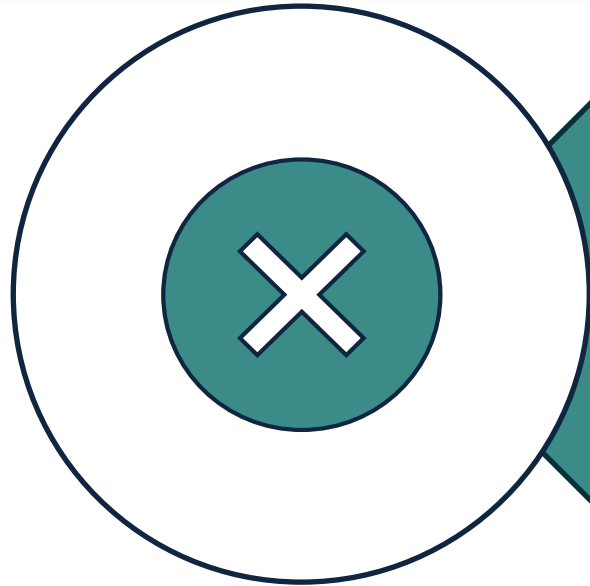


The Staff Assessment was released for public comment on March 2<sup>nd</sup>.

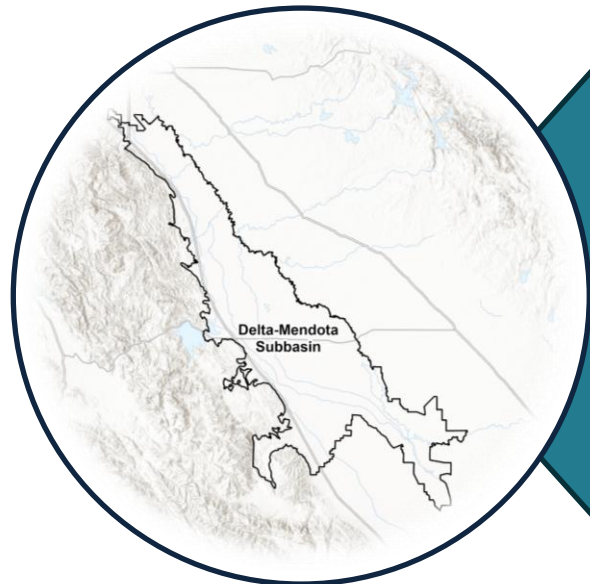
Public comments were due on April 1<sup>st</sup>.



# Staff Recommendations for Board Action



Probationary  
designation not  
warranted



Return the Delta-  
Mendota  
Subbasin to  
DWR's jurisdiction

# Office of Sustainable Groundwater Management

[SGMA@waterboards.ca.gov](mailto:SGMA@waterboards.ca.gov)

[www.waterboards.ca.gov/sgma](http://www.waterboards.ca.gov/sgma)

