



## LAKE COUNTY VECTOR CONTROL DISTRICT

P.O. Box 310 • 410 Esplanade • Lakeport, CA 95453 • (707) 263-4770 • www.lcvcd.org

Lake County VCD  
2012 NPDES Annual Report

Order # 2012-0003-DWQ  
NPDES# CAG 990004

### 1. **Annual Report**

#### a. Executive Summary

Lake County Vector Control District (District) complied with the applicable components of the General National Pollutant Discharge Elimination System (NPDES) Permit for Biological and Residual Pesticide Discharges from Vector Control Applications (General Permit). The District is a member of the Mosquito and Vector Control Association of California (MVCAC) NPDES Permit Coalition and the Coalition conducted all required chemical and physical monitoring. The results of the Coalition's monitoring were included in the Coalition Annual Report that was sent separately to the SWRCB and Regional Boards.

The District made 427 applications to or near waters of the U.S. during the 2012 calendar year; 1 application was in SWRCB Region 1, and 426 applications were in Region 5S. The logs of these applications can be found in Attachment B. The District performed Visual Monitoring of individual application sites identified as "Waters of the US" until July 2012. The visual monitoring completed by the District in the first half of the year found that there is no observable change in water quality between the background, event, and post event time periods-see monitoring log sheets. The SWRCB notified the permit holders in a letter to MVCAC dated July 13, 2012 that because the visual monitoring requirements were "interfering with the need for maximal efficient application to adequately protect human health from vector-borne diseases like West Nile Virus," that the visual monitoring was no longer required by individual Districts. The District continued to follow the guidelines of its Pesticide Application Plan (PAP).

#### b. Summary of Monitoring Data

The District began the year by complying with the visual monitoring requirements of the permit. See Footnote 1 of Tables C-1 and C-2 in Amended Water Quality Control Order No. 2011-0002-DWQ, General Permit No. CAG990004. These requirements required a tremendous amount of time to monitor including a number of revisits to specific sites to gather the necessary information. Most critically, time spent revisiting old sites caused delays in getting to new sites. Given the short lifecycle of the mosquito, this greatly exacerbated the task of detecting and treating mosquito larval development sites early in their lifecycle when treatment is more concentrated and effective. Recognizing the need of mosquito control districts to quickly find and treat mosquito breeding sites to prevent the spread of disease, such as West Nile virus, the SWRCB issued a letter to MVCAC dated July 13, 2012 that indicated the visual monitoring requirement would no longer be required of individual Districts.

Per the instructions in the letter, the Coalition will provide information on the incidence of West Nile Virus and other similar public health threats in the Coalition's annual report.

For the reasons stated above, the District will no longer be collecting visual monitoring data.

- c. BMP Identification  
BMP's utilized by the District are outlined in the District's PAP. These include emphasis on reducing mosquito breeding habitat through non-chemical means, training employees to prevent spills and applying appropriate amount of chemical in each treatment area, calibrating application equipment and using a biologically-based assessment for determining treatment thresholds.
- d. Violation Discussion  
No violations of the General Permit by the District were observed.
- e. Map of Applications  
See Attachment A.
- f. Log of Applications made to Waters of the U.S.  
Attachment B includes reports of all application data on the covered application areas.
- g. General Information on Applications  
Attachment B includes information on dosage, concentration and quantity of each pesticide used which are derived from the individual pesticide labels.
- h. Visual Monitoring Data  
Visual Monitoring Data has been submitted to the State Water Board in the provided Monitoring Database Form Attachment C.
- i. BMP, PAP, Monitoring Program Recommendations  
No recommendations are being proposed to improve the current BMPs, PAP, or monitoring plan. Any changes to the Coalition Monitoring Plan will be highlighted in the Coalition Monitoring Annual Report.
- j. Pesticide Application Log made to Waters of the U.S.  
A representation of the pesticide application log is contained in Attachment B.

2. **Updated PAP Components**

N/A

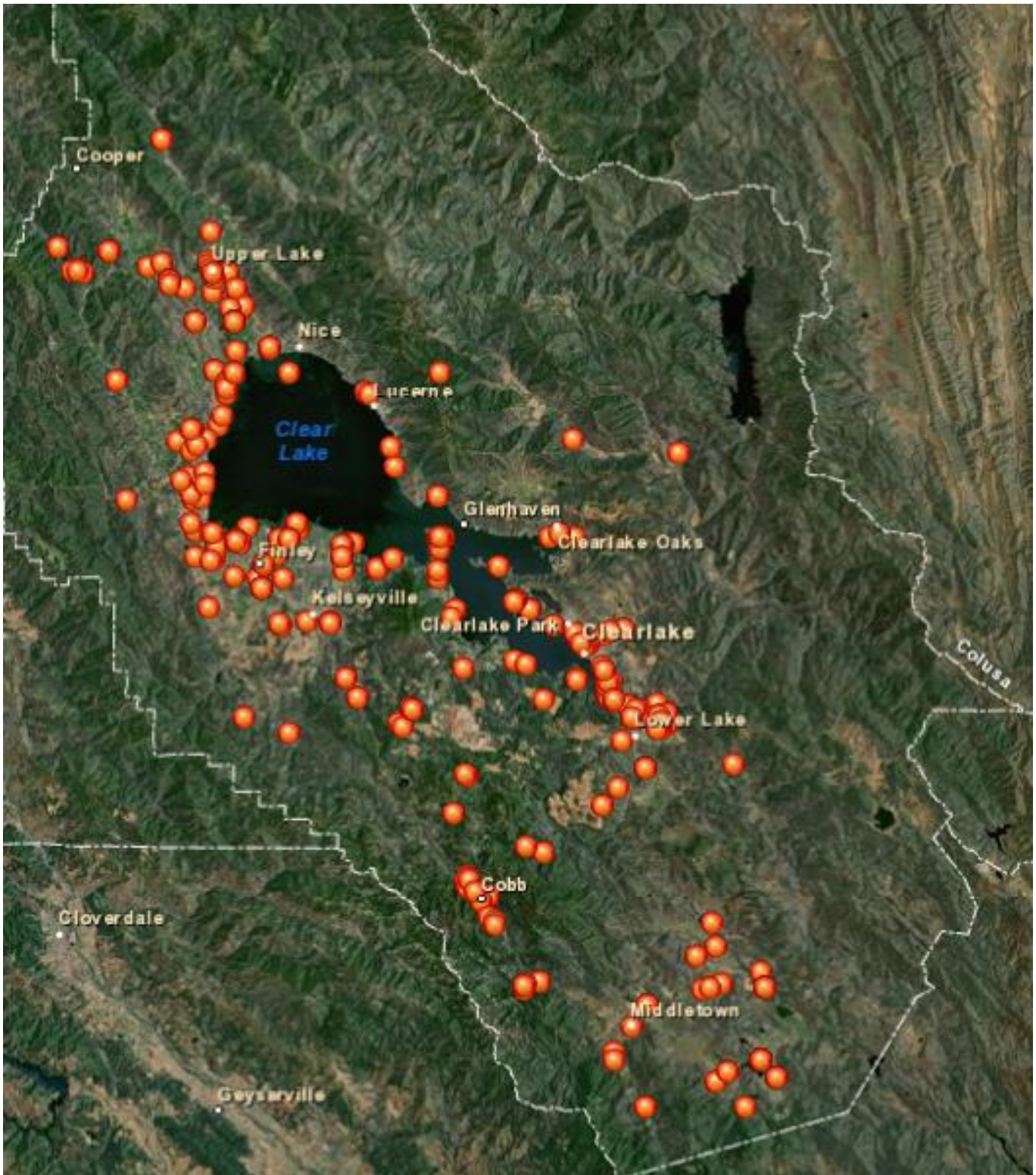
3. **Self Monitoring Reports**

N/A

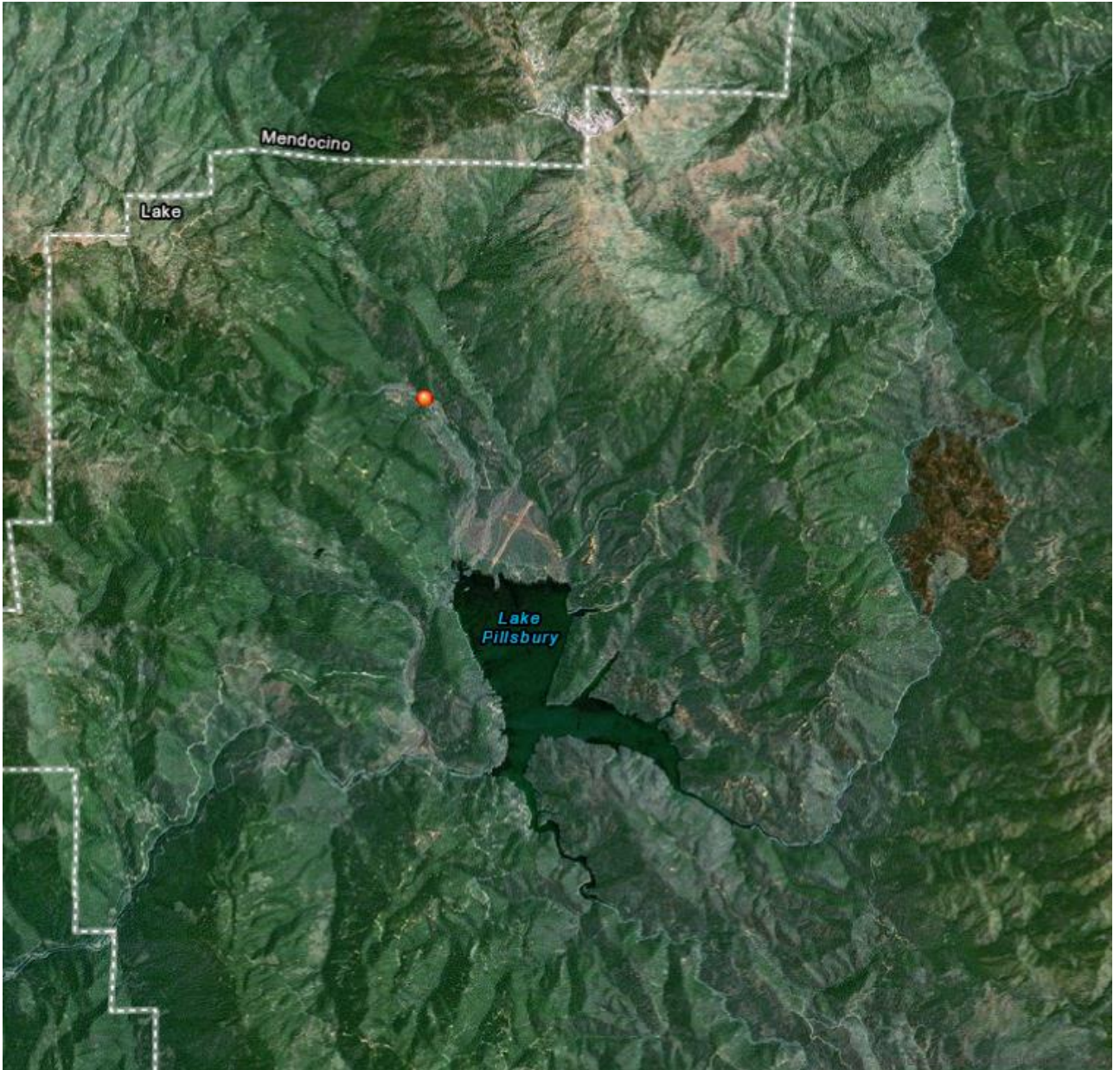
4. **Monitoring Reports**

The Coalition Monitoring Annual Report summarized all physical measurements and chemical monitoring done for 2011 and 2012.

# 2012 WOTUS Sites for Lake Co., CA Region (5S)



## 2012 WOTUS Sites for Lake Co., CA Region (1)



## 2012 NPDES Waters of the U.S. Treatment Region (1)

Date	Employee	Location	City	Pesticide	Amount (gal., unless noted)
6/20/2012	B. Hayes	Pillsbury Ranches	Lake Pillsbury	BioMist 4+12	2.86

## t Log for Lake Co., CA

Area(acres)	Time	Water Body	Lat	Long
222	3:30 AM	Lake Pillsbury	39.4746	-122.9749

**2012 NPDES Waters of**

<b>Date</b>	<b>Employee</b>	<b>Location</b>	<b>City</b>	<b>Pesticide</b>
3/2/2012	B. Hayes	League Street	Upper Lake	VectoBac G
3/9/2012	B. Hayes	Pasture Ditch	Upper Lake	Agnique MMF
4/4/2012	Anderson	Lakeview Way	Clearlake	VectoBac G
4/17/2012	Sanderson	2850 Big Vly Rd.	Finley	VectoBac G
4/17/2012	Sanderson	Lakeside County Park	Kelseyville	VectoBac G
4/17/2012	Sanderson	Cole Cr. Meander, Clarke Dr.	Kelseyville	VectoBac G
4/18/2012	B. Hayes	Reclamation Road	Upper Lake	VectoBac G
4/18/2012	B. Hayes	8420 Reclamation Road	Upper Lake	VectoBac G
4/19/2012	Anderson	Lakeview Way	Clearlake	VectoBac G
4/19/2012	Anderson	8660 Bonham Rd	Lower Lake	VectoBac G
4/20/2012	Sanderson	C.L. State Park	Kelseyville	VectoBac G
4/23/2012	B. Hayes	Nice/Lucerne Cutoff	Lakeport	VectoBac G
5/1/2012	Courcier	Foard Rd	Middletown	Biomist 4+12
5/1/2012	Courcier	Hwy. 175	Middletown	Biomist 4+12
5/1/2012	Courcier	Grange Rd	Hidden Valley	Biomist 4+12
5/1/2012	Sanderson	Lakeside County Park	Kelseyville	Biomist 4+12
5/1/2012	Sanderson	Parkview + Meadow Drives.	Lakeport	Biomist 4+12
5/1/2012	Sanderson	Clary, Bottlerock Rd.	Kelseyville	Biomist 4+12
5/1/2012	Sanderson	Bayview Rec. Resort	Kelseyville	Biomist 4+12
5/2/2012	Courcier	19491 Butts Canyon Rd	Middletown	Biomist 4+12
5/2/2012	Courcier	Oat Hill Rd	Middletown	Biomist 4+12
5/2/2012	Sanderson	5775 Lakeshore Blvd.	Lakeport	Pyrenone Crop Spray
5/8/2012	Anderson	16011 Dam Rd	Clearlake	Biomist 4+12
5/8/2012	Anderson	16021 Dam Rd	Clearlake	Biomist 4+12

5/8/2012	Anderson	14195 Kabal St	Clearlake	Biomist 4+12
5/8/2012	Anderson	14840 Burns Valley Rd	Clearlake	Biomist 4+12
5/9/2012	Sanderson	Walnut Cove	Kelseyville	Biomist 4+12
5/9/2012	Sanderson	5703 Inca Way	Kelseyville	Biomist 4+12
5/9/2012	Sanderson	Sunrise Shores	Lower Lake	Biomist 4+12
5/9/2012	Sanderson	450 Silva Ln.	Lakeport	Biomist 4+12
5/9/2012	Sanderson	Ackley Cutoff	Lakeport	Biomist 4+12
5/10/2012	Courcier	North Shore Dr	Hidden Valley	Biomist 4+12
5/10/2012	Courcier	Hidden Valley Ranchos	Hidden Valley	Biomist 4+12
5/11/2012	Courcier	Butts Canyon Rd	Middletown	Biomist 4+12
5/11/2012	Courcier	Murphy Springs Rd	Lower Lake	Biomist 4+12
5/11/2012	Sanderson	Konocti Vista Rd	Kelseyville	Biomist 4+12
5/11/2012	Sanderson	5th St	Lakeport	Biomist 4+12
5/11/2012	Sanderson	Bell Hill Rd	Kelseyville	Biomist 4+12
5/11/2012	Anderson	Hwy 53 Anderson Marsh	Lower Lake	Biomist 4+12
5/11/2012	Anderson	9271 Bonham Rd	Lower Lake	Biomist 4+12
5/11/2012	Anderson	9271 Quarter Horse	Lower Lake	Biomist 4+12
5/11/2012	Anderson	9231 Quarter Horse	Lower Lake	Biomist 4+12
5/11/2012	Anderson	9192 Stagecoach Ln	Lower Lake	Biomist 4+12
5/11/2012	Anderson	9163 Stagecoach Ln	Lower Lake	Biomist 4+12
5/11/2012	Anderson	12946 Lakeshore Dr	Clearlake	Biomist 4+12
5/11/2012	Anderson	12958 Lakeshore Dr	Clearlake	Biomist 4+12
5/11/2012	Courcier	22000 Butts Canyon Rd	Middletown	MGK Pyroicide Mosquito Adult
5/11/2012	Courcier	St Helena Ln	Middletown	MGK Pyroicide Mosquito Adult
5/11/2012	Sanderson	8525 Palace Dr	Kelseyville	Pyrenone Crop Spray
5/11/2012	Sanderson	3750 White Ln	Kelseyville	Pyrenone Crop Spray
5/11/2012	Sanderson	1450 Oak Hill Ct	Kelseyville	Pyrenone Crop Spray
5/11/2012	Sanderson	8835 Peterson Ln.	Kelseyville	Pyrenone Crop Spray



5/15/2012	Sanderson	Steele Winery	Kelseyville	Agnique MMF
5/15/2012	B. Hayes	CLO Keys	Clearlake Oaks	Biomist 4+12
5/15/2012	B. Hayes	Pepperwood Cove	Lucerne	Biomist 4+12
5/15/2012	B. Hayes	Lorraine Village	Lucerne	Biomist 4+12
5/15/2012	Courcier	Downtown Middletown	Middletown	Biomist 4+12
5/15/2012	Anderson	9551 Hwy 29	Lower Lake	Biomist 4+12
5/15/2012	Anderson	6035 Old Hwy 53	Clearlake	Biomist 4+12
5/15/2012	Anderson	5865 Old Hwy 53	Clearlake	Biomist 4+12
5/15/2012	Anderson	San Joaquin Ext.	Clearlake	Biomist 4+12
5/16/2012	B. Hayes	Blue Lakes	Upper Lake	Biomist 4+12
5/16/2012	B. Hayes	Elk Mountain Road	Upper Lake	Biomist 4+12
5/16/2012	Courcier	Schwartz Rd	Cobb	Biomist 4+12
5/16/2012	Courcier	Putter Rd	Cobb	Biomist 4+12
5/16/2012	Courcier	Edgewood Way	Cobb	Biomist 4+12
5/16/2012	Courcier	15965 Bottle Rock Rd	Cobb	Biomist 4+12
5/16/2012	Courcier	Rocky's Rd.	Cobb	Biomist 4+12
5/17/2012	Sanderson	308 Dixon Rd	Lakeport	Biomist 4+12
5/17/2012	Sanderson	2365 Parallel Dr	Lakeport	Biomist 4+12
5/17/2012	Sanderson	Martin St	Lakeport	Biomist 4+12
5/17/2012	Sanderson	Page Park	Lakeport	Biomist 4+12
5/17/2012	Sanderson	Scotts Vly Mission Rancheria Rd	Lakeport	Biomist 4+12
5/17/2012	Sanderson	4550 Lakeshore Dr	Lakeport	Biomist 4+12
5/18/2012	Courcier	Grange Rd	Middletown	Biomist 4+12
5/18/2012	Courcier	Grange Rd	Hidden Valley	Biomist 4+12
5/18/2012	Courcier	Joseph Trail	Lower Lake	Biomist 4+12
5/18/2012	Sanderson	3290 Ackley	Lakeport	Biomist 4+12
5/18/2012	Sanderson	Finley Area	Finley	Biomist 4+12
5/18/2012	Sanderson	5130 Soda Bay Rd.	Kelseyville	Biomist 4+12

5/18/2012	Anderson	11165 Clayton Creek	Lower Lake	Biomist 4+12
5/18/2012	Anderson	11035 Clayton Creek	Lower Lake	Biomist 4+12
5/18/2012	Anderson	11135 Clayton Creek	Lower Lake	Biomist 4+12
5/18/2012	Anderson	19725 Oak Haven Rd	Lower Lake	Biomist 4+12
5/22/2012	B. Hayes	Highway 20 Ditch	Upper Lake	Biomist 4+12
5/22/2012	B. Hayes	Big Oak Way	Upper Lake	Biomist 4+12
5/22/2012	B. Hayes	Elk Mountain Road	Upper Lake	Biomist 4+12
5/22/2012	B. Hayes	Mendenhall	Upper Lake	Biomist 4+12
5/22/2012	B. Hayes	Tule Lake	Upper Lake	Biomist 4+12
5/22/2012	Courcier	Anderson Springs Rd.	Middletown	Biomist 4+12
5/22/2012	Courcier	Hilderbrand Dr	Middletown	Biomist 4+12
5/22/2012	Courcier	Dry Creek Cutoff Rd	Middletown	Biomist 4+12
5/22/2012	Anderson	16425 Dam Rd	Clearlake	Biomist 4+12
5/22/2012	Anderson	16820 Betz	Clearlake	Biomist 4+12
5/22/2012	Anderson	5824 Old Hwy 53	Clearlake	Biomist 4+12
5/22/2012	Anderson	5845 Old Hwy 53	Clearlake	Biomist 4+12
5/22/2012	Anderson	Bella Laguna	Clearlake	Biomist 4+12
5/22/2012	Anderson	13961 Lakeshore Dr	Clearlake	Biomist 4+12
5/22/2012	B. Hayes	Bridge Arbor	Upper Lake	MGK Pyroicide Mosquito Adult
5/22/2012	B. Hayes	Scotts Valley	Lakeport	MGK Pyroicide Mosquito Adult
5/22/2012	Courcier	St Helena Ln	Middletown	MGK Pyroicide Mosquito Adult
5/23/2012	Courcier	Salmina Rd	Cobb	Biomist 4+12
5/23/2012	Courcier	Edgewood Way	Cobb	Biomist 4+12
5/23/2012	Courcier	16180 Park Dr	Cobb	Biomist 4+12
5/23/2012	Sanderson	Lakeport Auto Movies	Lakeport	Biomist 4+12
5/23/2012	Sanderson	450 Silva Ln.	Lakeport	Biomist 4+12
5/23/2012	Sanderson	4055 Highland Spr. Rd.	Lakeport	Biomist 4+12
5/23/2012	Sanderson	350 Martin St.	Lakeport	Biomist 4+12

5/23/2012	Sanderson	4970 Lakeshore Blvd.	Lakeport	Biomist 4+12
5/24/2012	Anderson	15085 Highlands Harbor Dr	Clearlake	Biomist 4+12
5/24/2012	Anderson	15525 Rumsey Rd	Clearlake	Biomist 4+12
5/24/2012	Anderson	3025 Old Hwy 53	Clearlake	Biomist 4+12
5/24/2012	Anderson	5920 Hale Ave	Clearlake	Biomist 4+12
5/24/2012	Courcier	22000 Butts Canyon Rd	Middletown	MGK Pyroicide Mosquito Adult
5/25/2012	B. Hayes	Main Street	Upper Lake	Biomist 4+12
5/25/2012	B. Hayes	Highway 20	Upper Lake	Biomist 4+12
5/25/2012	B. Hayes	Wolf Creek	Spring Valley	Biomist 4+12
5/25/2012	B. Hayes	CLO Keys	Clearlake Oaks	Biomist 4+12
5/30/2012	Courcier	Hilderbrand Dr	Middletown	Biomist 4+12
5/30/2012	Courcier	Hidden Valley Golf Course	Hidden Valley	Biomist 4+12
5/30/2012	Sanderson	Parkview Dr.	Lakeport	Biomist 4+12
5/30/2012	Sanderson	Land's End Area	Lakeport	Biomist 4+12
5/30/2012	Sanderson	Blower Ln.	Lakeport	Biomist 4+12
5/30/2012	Sanderson	2787 Soda Bay Rd.	Lakeport	Biomist 4+12
5/30/2012	Sanderson	2500 Waldo Ln.	Lakeport	Biomist 4+12
5/30/2012	Sanderson	Soda Bay Resorts	Kelseyville	Biomist 4+12
5/30/2012	Sanderson	Steele Winery	Kelseyville	Fourstar Briquettes
5/31/2012	Sanderson	Luchetti's Pasture, Grange Rd.	Hidden Vly	Agnique MMF G
5/31/2012	Sanderson	Luchetti's Pasture, Grange Rd.	Hidden Vly	Altosid Briquettes
5/31/2012	B. Hayes	Rancheria Road	Upper Lake	Biomist 4+12
5/31/2012	B. Hayes	Laurel Dell Road	Lucerne	Biomist 4+12
5/31/2012	B. Hayes	CLO Keys	Clearlake Oaks	Biomist 4+12
5/31/2012	Anderson	14043 Lakeshore Dr	Clearlake	Biomist 4+12
5/31/2012	Sanderson	403 Thomas Dr	Kelseyville	Pyrenone Crop Spray
5/31/2012	Sanderson	Eastlake Dr.	Kelseyville	Pyrenone Crop Spray
6/1/2012	Sanderson	Single Springs Rd.	Kelseyville	Biomist 4+12

6/1/2012	Courcier	Grange Rd	Hidden Valley	Biomist 4+12
6/1/2012	Sanderson	3570 Lakeshore Blvd	Lakeport	Biomist 4+12
6/1/2012	Sanderson	Single Springs Rd.	Kelseyville	Biomist 4+12
6/1/2012	Sanderson	Single Springs Rd.	Kelseyville	Biomist 4+12
6/1/2012	Anderson	3045 Garner Ln	Clearlake	Biomist 4+12
6/1/2012	Anderson	Hwy 53 Anderson Marsh	Lower Lake	Biomist 4+12
6/4/2012	Courcier	22000 Butts Canyon Rd	Middletown	Agnique MMF
6/4/2012	Courcier	22000 Butts Canyon Rd	Middletown	Fourstar Briquettes
6/5/2012	Courcier	22000 Butts Canyon Rd	Middletown	Altosid XR Briquettes
6/5/2012	Courcier	22000 Butts Canyon Rd	Middletown	Pyrenone Crop Spray
6/5/2012	Courcier	Grange Rd	Hidden Valley	Pyrenone Crop Spray
6/6/2012	Courcier	Grange Rd	Hidden Valley	Biomist 4+12
6/6/2012	Sanderson	1st & Russel Area	Lakeport	Biomist 4+12
6/6/2012	Sanderson	11th St	Lakeport	Biomist 4+12
6/6/2012	Sanderson	5830 Robin Hill Dr	Lakeport	Biomist 4+12
6/6/2012	Sanderson	2837 Meadow Dr	Lakeport	Biomist 4+12
6/6/2012	Sanderson	2775 Bell Hill Rd	Kelseyville	Biomist 4+12
6/6/2012	Courcier	22000 Butts Canyon Rd	Middletown	MGK Pyroicide Mosquito Adult
6/8/2012	B. Hayes	Blue Lakes	Upper Lake	Biomist 4+12
6/8/2012	B. Hayes	Scotts Creek Road	Lakeport	Biomist 4+12
6/8/2012	Courcier	Mesa Drive Petition	Cobb	Biomist 4+12
6/8/2012	Courcier	Schwartz Rd	Cobb	Biomist 4+12
6/8/2012	Anderson	Highlands Harbor Dr	Clearlake	Biomist 4+12
6/8/2012	Anderson	15225 Highlands Harbor Dr	Clearlake	Biomist 4+12
6/14/2012	Courcier	Anderson Springs Rd.	Middletown	Biomist 4+12
6/14/2012	Sanderson	1950 Lakeshore Blvd	Lakeport	Biomist 4+12
6/14/2012	Sanderson	Lakeshore Blvd	Lakeport	Biomist 4+12
6/14/2012	Sanderson	Northport Trailer Park	Lakeport	Biomist 4+12

6/14/2012	Sanderson	670 Todd Rd	Lakeport	Biomist 4+12
6/14/2012	Sanderson	Soda Bay Resorts	Kelseyville	Biomist 4+12
6/14/2012	Sanderson	Bottle Rock Rd Property	Kelseyville	Biomist 4+12
6/15/2012	Courcier	22000 Butts Canyon Rd	Middletown	Altosid Pellets
6/15/2012	B. Hayes	8420 Reclamation Road	Upper Lake	Biomist 4+12
6/15/2012	B. Hayes	Big Oak Way	Upper Lake	Biomist 4+12
6/15/2012	B. Hayes	CLO Keys	Clearlake Oaks	Biomist 4+12
6/15/2012	Courcier	Butts Canyon Rd	Middletown	Biomist 4+12
6/15/2012	Courcier	Guenoc Ln	Hidden Valley	Biomist 4+12
6/15/2012	Courcier	22000 Butts Canyon Rd	Middletown	MGK Pyroicide Mosquito Adult
6/15/2012	Sanderson	1590 Eastlake Dr	Kelseyville	Pyrenone Crop Spray
6/15/2012	Sanderson	Compton	Lakeport	Pyrenone Crop Spray
6/18/2012	B. Hayes	Reclamation Road	Upper Lake	Altosid Pellets
6/19/2012	B. Hayes	Reclamation Road	Upper Lake	Agnique MMF
6/20/2012	B. Hayes	Reclamation Road	Upper Lake	Biomist 4+12
6/20/2012	Courcier	Estates Dr	Cobb	Biomist 4+12
6/20/2012	Courcier	Schwartz Rd	Cobb	Biomist 4+12
6/20/2012	Courcier	Gordon Springs Subdivision	Cobb	Biomist 4+12
6/20/2012	Sanderson	3337 Compton	Lakeport	Biomist 4+12
6/20/2012	Sanderson	Parkview Dr	Lakeport	Biomist 4+12
6/20/2012	Sanderson	2500 Waldo Ln	Lakeport	Biomist 4+12
6/20/2012	Sanderson	8428 Palace Dr.	Kelseyville	Biomist 4+12
6/21/2012	Sanderson	Steele Winery	Kelseyville	Agnique MMF
6/21/2012	Courcier	22000 Butts Canyon Rd	Middletown	Pyrenone Crop Spray
6/22/2012	B. Hayes	Meadow Point	Upper Lake	Biomist 4+12
6/22/2012	B. Hayes	Tule Lake	Upper Lake	Biomist 4+12
6/22/2012	B. Hayes	Saratoga Springs	Upper Lake	Biomist 4+12
6/22/2012	Courcier	Big Canyon Rd.	Middletown	Biomist 4+12

6/22/2012	Sanderson	17097 Dogwood Way	Cobb	Biomist 4+12
6/22/2012	Sanderson	Mesa Dr area	Cobb	Biomist 4+12
6/22/2012	Sanderson	Bottle Rock Rd Property	Kelseyville	Biomist 4+12
6/22/2012	Anderson	11115 Clayton Creek	Lower Lake	Biomist 4+12
6/22/2012	Anderson	11035 Clayton Creek	Lower Lake	Biomist 4+12
6/22/2012	Anderson	14236 Olympic	Clearlake	Biomist 4+12
6/22/2012	Anderson	Rosewood Lane	Clearlake	Biomist 4+12
6/27/2012	Anderson	Bella Laguna	Clearlake	Biomist 4+12
6/27/2012	Anderson	Redbud Park/Austin Park	Clearlake	Biomist 4+12
6/27/2012	Anderson	Austin Park	Clearlake	Biomist 4+12
6/28/2012	B. Hayes	Reclamation Road	Upper Lake	Biomist 4+12
6/28/2012	B. Hayes	Saratoga Springs	Upper Lake	Biomist 4+12
6/28/2012	Courcier	Butts Canyon Rd	Middletown	Biomist 4+12
6/28/2012	Courcier	Murphy Springs Rd	Lower Lake	Biomist 4+12
6/28/2012	Sanderson	Northport Trailer Park	Lakeport	Biomist 4+12
6/28/2012	Sanderson	Parkview Dr.	Lakeport	Biomist 4+12
6/28/2012	Sanderson	Meadow Dr.	Lakeport	Biomist 4+12
6/28/2012	Sanderson	Lakeside County Park	Kelseyville	Biomist 4+12
6/28/2012	Sanderson	Soda Bay Resorts	Kelseyville	Biomist 4+12
6/28/2012	Sanderson	3010 Hillside Ct.	Kelseyville	Biomist 4+12
6/28/2012	Sanderson	2040 Eastlake Dr.	Kelseyville	Biomist 4+12
6/28/2012	Sanderson	Cole Cr. Rd.	Kelseyville	Biomist 4+12
6/28/2012	B. Hayes	Reclamation Rice	Upper Lake	MGK Pyrocide Mosquito Adult
6/28/2012	Courcier	22000 Butts Canyon Rd	Middletown	MGK Pyrocide Mosquito Adult
6/29/2012	Anderson	15297 Harbor Lane	Clearlake	Biomist 4+12
6/29/2012	Anderson	6035 Old Hwy 53	Clearlake	Biomist 4+12
6/29/2012	Anderson	5864 Old Hwy 53	Clearlake	Biomist 4+12
6/29/2012	Sanderson	Belcher's Pasture, Grange Rd.	Hidden Vly	Metalarv S-PT

7/3/2012 B. Hayes	Kennedy Ranch	Spring Valley	Biomist 4+12
7/3/2012 B. Hayes	Davison	Upper Lake	Biomist 4+12
7/3/2012 B. Hayes	Highway 20	Upper Lake	Biomist 4+12
7/3/2012 courcier	Bottle Rock Rd	Cobb	Biomist 4+12
7/3/2012 B. Hayes	Reclamation Road	Upper Lake	Fourstar Briquettes
7/3/2012 B. Hayes	Reclamation Rice	Upper Lake	MGK Pyroicide Mosquito Adult
7/5/2012 Courcier	Butts Canyon Rd	Middletown	Altosid XR Briquettes
7/6/2012 Courcier	Maple Shadows	Cobb	Biomist 4+12
7/6/2012 Sanderson	Mayer	Lakeport	Biomist 4+12
7/6/2012 Sanderson	2865 E Finley Rd	Finley	Biomist 4+12
7/6/2012 Anderson	13825 Lakeshore Dr	Clearlake	Biomist 4+12
7/6/2012 Anderson	13725 Lower Lakeshore	Clearlake	Biomist 4+12
7/6/2012 Anderson	10820 North Dr	Clearlake	Biomist 4+12
7/6/2012 Courcier	Sheveland Rd	Middletown	MGK Pyroicide Mosquito Adult
7/9/2012 Sanderson	Reclamation & Irwins	Nice	Vectomax CG
7/11/2012 Sanderson	2787 Soda Bay Rd	Lakeport	Biomist 4+12
7/11/2012 Sanderson	2551 Blower Ln	Lakeport	Biomist 4+12
7/11/2012 Sanderson	2500 Waldo Ln	Lakeport	Biomist 4+12
7/11/2012 Sanderson	Steelhead Dr	Kelseyville	Biomist 4+12
7/11/2012 Sanderson	5189 Baylis Point Dr	Kelseyville	Biomist 4+12
7/12/2012 Sanderson	Steele Winery	Kelseyville	Agnique MMF
7/13/2012 Courcier	Salmina Rd	Cobb	Biomist 4+12
7/13/2012 Courcier	Parnassus Dr	Cobb	Biomist 4+12
7/13/2012 Courcier	19491 Butts Canyon Rd	Middletown	Biomist 4+12
7/13/2012 Sanderson	Blower	Lakeport	Biomist 4+12
7/13/2012 Sanderson	8405 Palace Dr	Kelseyville	Biomist 4+12
7/13/2012 Courcier	22000 Butts Canyon Rd	Middletown	MGK Pyroicide Mosquito Adult
7/16/2012 Courcier	22000 Butts Canyon Rd	Middletown	Altosid Briquettes

7/16/2012	Courcier	22000 Butts Canyon Rd	Middletown	Biomist 4+12
7/19/2012	B. Hayes	Nice	Nice	Biomist 4+12
7/19/2012	Sanderson	5130 Soda Bay Rd	Kelseyville	Biomist 4+12
7/19/2012	Anderson	San Joaquin Ext.	Clearlake	Biomist 4+12
7/19/2012	Anderson	16220 Dam Rd	Clearlake	Biomist 4+12
7/19/2012	B. Hayes	Reclamation Rice	Upper Lake	MGK Pyroicide Mosquito Adult
7/20/2012	Courcier	Butts Canyon Rd	Middletown	Biomist 4+12
7/20/2012	Courcier	Grange Rd	Hidden Valley	Biomist 4+12
7/20/2012	Courcier	22000 Butts Canyon Rd	Middletown	MGK Pyroicide Mosquito Adult
7/24/2012	Sanderson	Palace Dr	Kelseyville	Biomist 4+12
7/24/2012	Sanderson	5680 Robin Hill Dr	Lakeport	Biomist 4+12
7/24/2012	Sanderson	5830 Robin Hill Dr	Lakeport	Biomist 4+12
7/24/2012	Sanderson	Tule Lake rice	Upper Lake	MGK Pyroicide Mosquito Adult
7/25/2012	Courcier	22000 Butts Canyon Rd	Middletown	Biomist 4+12
7/26/2012	B. Hayes	Tule Lake Road	Upper Lake	Biomist 4+12
7/26/2012	Sanderson	Steele Winery	Kelseyville	Agnique MMF
7/26/2012	B. Hayes	Saratoga Springs	Upper Lake	Biomist 4+12
7/26/2012	B. Hayes	Zeno Road	Lakeport	Biomist 4+12
7/26/2012	B. Hayes	CLO Keys	Clearlake Oaks	Biomist 4+12
7/26/2012	B. Hayes	Reclamation Rice	Upper Lake	MGK Pyroicide Mosquito Adult
7/27/2012	Sanderson	4970 Lakeshore Blvd	Lakeport	Biomist 4+12
7/27/2012	Sanderson	2090 E Finley Rd	Finley	Biomist 4+12
7/27/2012	Sanderson	Soda Bay Resorts	Kelseyville	Biomist 4+12
7/27/2012	Sanderson	Sunrise Shores	Lower Lake	Biomist 4+12
7/27/2012	Anderson	16011 Dam Rd	Clearlake	Biomist 4+12
7/27/2012	Anderson	Hwy 53 Anderson Marsh	Clearlake	Biomist 4+12
7/31/2012	Courcier	Butts Canyon Rd	Middletown	Biomist 4+12
7/31/2012	Courcier	22000 Butts Canyon Rd	Middletown	MGK Pyroicide Mosquito Adult



8/1/2012	B. Hayes	Saratoga Springs	Upper Lake	Biomist 4+12
8/1/2012	B. Hayes	Reclamation Rice	Upper Lake	MGK Pyroicide Mosquito Adult
8/1/2012	Sanderson	Tule Lake rice	Upper Lake	MGK Pyroicide Mosquito Adult
8/2/2012	Sanderson	Steele Winery	Kelseyville	Agnique MMF
8/3/2012	Sanderson	Steelhead Dr	Kelseyville	Biomist 4+12
8/3/2012	Sanderson	Robin Hill	Lakeport	Biomist 4+12
8/3/2012	Sanderson	Upper Lake Town	Upper Lake	Biomist 4+12
8/3/2012	Anderson	16925 Dam Rd South	Clearlake	Biomist 4+12
8/3/2012	B. Hayes	Blue Lakes	Upper Lake	Pyrenone Crop Spray
8/6/2012	Sanderson	Tule Lake Rice	Upper Lake	Vectomax CG
8/6/2012	Sanderson	Reclamation & Irwins	Upper Lake	Vectomax CG
8/8/2012	Sanderson	5775 Lakeshore Blvd	Lakeport	Pyrenone Crop Spray
8/9/2012	B. Hayes	Upper Lake	Upper Lake	Biomist 4+12
8/9/2012	B. Hayes	Blue Lakes	Upper Lake	Biomist 4+12
8/9/2012	B. Hayes	Reclamation Levee	Upper Lake	Biomist 4+12
8/9/2012	Courcier	Butts Canyon Rd	Middletown	Biomist 4+12
8/9/2012	Courcier	Butts Canyon Rd	Middletown	Biomist 4+12
8/9/2012	Courcier	Grange Rd	Hidden Valley	Biomist 4+12
8/9/2012	Sanderson	5020 Lakeshore Blvd	Lakeport	Biomist 4+12
8/9/2012	Sanderson	Meadow Dr	Lakeport	Biomist 4+12
8/9/2012	Sanderson	2500 Waldo Ln	Lakeport	Biomist 4+12
8/9/2012	B. Hayes	Tule Lake	Upper Lake	MGK Pyroicide Mosquito Adult
8/9/2012	B. Hayes	Reclamation Rice	Upper Lake	MGK Pyroicide Mosquito Adult
8/9/2012	Courcier	22000 Butts Canyon Rd	Middletown	MGK Pyroicide Mosquito Adult
8/10/2012	B. Hayes	Nice	Nice	Biomist 4+12
8/10/2012	B. Hayes	Foothill Drive	Lucerne	Biomist 4+12
8/10/2012	B. Hayes	Upper Lake	Upper Lake	Biomist 4+12
8/10/2012	Courcier	Gordon Springs Subdivision	Cobb	Biomist 4+12

8/10/2012	Anderson	Highlands Harbor Dr	Clearlake	Biomist 4+12
8/10/2012	Anderson	Hwy 53 Anderson Marsh	Lower Lake	Biomist 4+12
8/15/2012	B. Hayes	Upper Lake	Upper Lake	Biomist 4+12
8/15/2012	Sanderson	4355 Montezuma Way	Kelseyville	Biomist 4+12
8/15/2012	Sanderson	Starke Ranch	Kelseyville	Biomist 4+12
8/15/2012	B. Hayes	Tule Lake	Upper Lake	MGK Pyroicide Mosquito Adult
8/17/2012	Courcier	Hwy. 175	Kelseyville	Biomist 4+12
8/17/2012	Courcier	Salmina Rd	Cobb	Biomist 4+12
8/17/2012	Courcier	Madrone	Cobb	Biomist 4+12
8/17/2012	Anderson	16011 Dam Rd	Clearlake	Biomist 4+12
8/17/2012	Anderson	16021 Dam Rd	Clearlake	Biomist 4+12
8/17/2012	Anderson	Bella Laguna	Clearlake	Biomist 4+12
8/17/2012	Anderson	Clearlake Oak Keys	Clearlake Oaks	Biomist 4+12
8/17/2012	Courcier	22000 Butts Canyon Rd	Middletown	MGK Pyroicide Mosquito Adult
8/17/2012	B. Hayes	CLO Keys	Clearlake Oaks	Vectomax CG
8/22/2012	B. Hayes	CLO Keys	Clearlake Oaks	Duet
8/22/2012	B. Hayes	Reclamation Rice	Upper Lake	Duet
8/22/2012	B. Hayes	Tule Lake	Upper Lake	MGK Pyroicide Mosquito Adult
8/22/2012	Sanderson	Eggar Pasture	Kelseyville	Vectomax CG
8/22/2012	Sanderson	Starke Ranch	Kelseyville	Vectomax CG
8/23/2012	Courcier	Hwy. 175	Kelseyville	Biomist 4+12
8/23/2012	Courcier	Rainbow Rd	Cobb	Biomist 4+12
8/23/2012	Courcier	St. Helena Ln.	Middletown	Biomist 4+12
8/24/2012	Sanderson	Lafferty Rd	Lakeport	Biomist 4+12
8/24/2012	Sanderson	2500 Waldo Ln	Lakeport	Biomist 4+12
8/24/2012	Sanderson	2500 Waldo Ln	Lakeport	Biomist 4+12
8/24/2012	Sanderson	8485 Palace Dr	Kelseyville	Biomist 4+12
8/24/2012	Sanderson	2808 Buckingham Dr	Kelseyville	Biomist 4+12

8/24/2012	Anderson	14043 Lakeshore Dr	Clearlake	Biomist 4+12
8/24/2012	Anderson	Highlands Harbor Dr.	Clearlake	Biomist 4+12
8/24/2012	Anderson	Cache Cr. Way	Clearlake	Biomist 4+12
8/24/2012	Anderson	Lake St.	Lower Lake	Biomist 4+12
8/24/2012	Anderson	Hwy 53 Anderson Marsh	Lower Lake	Biomist 4+12
8/24/2012	B. Hayes	Lorraine Village	Lucerne	Duet
8/24/2012	B. Hayes	Zeno Road	Lakeport	Duet
8/24/2012	B. Hayes	Upper Lake	Upper Lake	Duet
8/27/2012	Sanderson	3384 Compton	Lakeport	Pyrenone Crop Spray
8/28/2012	Anderson	Copsey Cr.	Lower Lake	Vectomax CG
8/29/2012	B. Hayes	Bartlett	Nice	Biomist 4+12
8/29/2012	B. Hayes	Upper Lake	Upper Lake	Biomist 4+12
8/29/2012	B. Hayes	Reclamation Rice	Upper Lake	Biomist 4+12
8/29/2012	Courcier	Ettawa Springs Rd	Middletown	Biomist 4+12
8/29/2012	Courcier	Grange Rd	Middletown	Biomist 4+12
8/29/2012	Courcier	Hidden Valley Golf Course	Hidden Valley	Biomist 4+12
8/29/2012	Sanderson	2908 Keeling Ave	Lakeport	Biomist 4+12
8/29/2012	Sanderson	5020 Lakeshore Blvd	Lakeport	Biomist 4+12
8/29/2012	Sanderson	Soda Bay Resorts	Kelseyville	Biomist 4+12
8/29/2012	Sanderson	8920 Soda Bay Rd	Kelseyville	Biomist 4+12
8/29/2012	Sanderson	Bottle Rock Rd	Kelseyville	Biomist 4+12
8/29/2012	B. Hayes	Tule Lake	Upper Lake	MGK Pyroicide Mosquito Adult
8/31/2012	B. Hayes	Nice	Nice	Biomist 4+12
8/31/2012	B. Hayes	Upper Lake	Upper Lake	Biomist 4+12
8/31/2012	B. Hayes	Saratoga Springs	Upper Lake	Biomist 4+12
8/31/2012	B. Hayes	Main Street	Upper Lake	Biomist 4+12
8/31/2012	B. Hayes	CLO Keys	Clearlake Oaks	Biomist 4+12
8/31/2012	Courcier	Hwy. 175	Kelseyville	Biomist 4+12

8/31/2012	Courcier	Anderson Springs Rd.	Middletown	Biomist 4+12
8/31/2012	Courcier	Butts Canyon Rd	Middletown	Biomist 4+12
8/31/2012	Sanderson	North Lakeport Area	Lakeport	Biomist 4+12
8/31/2012	Anderson	Cache Cr. Way	Clearlake	Duet
8/31/2012	Anderson	Highlands Harbor Dr.	Clearlake	Duet
8/31/2012	Anderson	Lake St.	Lower Lake	Duet
8/31/2012	Anderson	Hwy 53 Anderson Marsh	Lower Lake	Duet
8/31/2012	Sanderson	9650 Kelsey Creek Dr	Kelseyville	MGK Pyroicide Mosquito Adult
8/31/2012	Sanderson	3337 Compton	Lakeport	MGK Pyroicide Mosquito Adult
8/31/2012	Courcier	22000 Butts Canyon Rd	Middletown	MGK Pyroicide Mosquito Adult
9/5/2012	B. Hayes	Orchard Shores	Clearlake Oaks	Biomist 4+12
9/5/2012	B. Hayes	CLO Keys	Clearlake Oaks	Biomist 4+12
9/6/2012	B. Hayes	Reclamation Rice	Upper Lake	Biomist 4+12
9/6/2012	Anderson	2892 Sierra Dr.	Lower Lake	Biomist 4+12
9/6/2012	Anderson	2890 Sierra Dr.	Lower Lake	Biomist 4+12
9/6/2012	Anderson	2529 Silverado	Lower Lake	Biomist 4+12
9/6/2012	Anderson	2895 Silverado	Lower Lake	Biomist 4+12
9/6/2012	Anderson	2975 Silverado	Lower Lake	Biomist 4+12
9/6/2012	Anderson	2995 Silverado	Lower Lake	Biomist 4+12
9/6/2012	Anderson	San Jouquin Ext.	Clearlake	Duet
9/7/2012	Courcier	Hwy. 175	Kelseyville	Biomist 4+12
9/7/2012	Courcier	Brook Dr	Cobb	Biomist 4+12
9/7/2012	Anderson	9241 Quaterhorse Ln.	Lower Lake	Biomist 4+12
9/7/2012	Anderson	Bonham Way	Lower Lake	Biomist 4+12
9/7/2012	Anderson	Copsey Cr. Area	Lower Lake	Biomist 4+12
9/7/2012	Anderson	Tish-a-Tang	Lower Lake	Biomist 4+12
9/7/2012	Anderson	Dam Rd. South	Lower Lake	Biomist 4+12
9/7/2012	Anderson	Dam Rd.	Lower Lake	Biomist 4+12

9/7/2012	Courcier	22000 Butts Canyon Rd	Middletown	MGK Pyrocyde Mosquito Adult
9/12/2012	B. Hayes	CLO Keys	Clearlake Oaks	Biomist 4+12
9/12/2012	B. Hayes	Upper Lake	Upper Lake	Biomist 4+12
9/12/2012	B. Hayes	Blue Lakes	Upper Lake	Biomist 4+12
9/12/2012	B. Hayes	Tule Lake	Upper Lake	Biomist 4+12
9/12/2012	B. Hayes	CLO Keys	Clearlake Oaks	Vectomax CG
9/14/2012	Courcier	Hwy. 175	Kelseyville	Biomist 4+12
9/14/2012	Courcier	Butts Canyon Rd	Middletown	Biomist 4+12
9/14/2012	Sanderson	Rocky Pt Rd.	Lakeport	Biomist 4+12
9/14/2012	Sanderson	Sterling Shores	Lakeport	Biomist 4+12
9/14/2012	Sanderson	Parkview Dr	Lakeport	Biomist 4+12
9/14/2012	Sanderson	Pine Ave	Kelseyville	Biomist 4+12
9/14/2012	Anderson	Hwy 53 Anderson Marsh	Lower Lake	Biomist 4+12
9/14/2012	Anderson	16021 Dam Rd.	Lower Lake	Biomist 4+12
9/21/2012	B. Hayes	CLO Keys	Clearlake Oaks	Biomist 4+12
9/21/2012	B. Hayes	Upper Lake	Upper Lake	Biomist 4+12
9/21/2012	B. Hayes	Tule Lake	Upper Lake	Biomist 4+12
9/21/2012	Sanderson	Regency Inn	Lakeport	Biomist 4+12
9/24/2012	Sanderson	CL Oaks Keys	Clearlake Oaks	Biomist 4+12
9/25/2012	Sanderson	CL Oaks Keys	Clearlake Oaks	VectoBac G
9/27/2012	Sanderson	5130 Soda Bay Rd	Kelseyville	Biomist 4+12
9/28/2012	B. Hayes	Zeno Road	Lakeport	Biomist 4+12
9/28/2012	B. Hayes	CLO Keys	Clearlake Oaks	Biomist 4+12
9/28/2012	Courcier	Grange Rd	Hidden Valley	Biomist 4+12
9/28/2012	Anderson	Hwy 53 Anderson Marsh	Lower Lake	Biomist 4+12
10/1/2012	Sanderson	C.L. Oaks Keys	Clearlake Oaks	Biomist 4+12
10/2/2012	Sanderson	Steele Winery	Kelseyville	Agnique MMF
10/2/2012	B. Hayes	Blue Lakes	Upper Lake	Biomist 4+12

10/2/2012 B. Hayes	CLO Keys	Clearlake Oaks	Biomist 4+12
10/2/2012 B. Hayes	Paradise Cove	Clearlake Oaks	VectoBac G
10/5/2012 B. Hayes	Paradise Cove	Clearlake Oaks	Biomist 4+12
10/5/2012 B. Hayes	CLO Keys	Clearlake Oaks	Biomist 4+12
10/5/2012 Sanderson	CL Oaks Keys East	Clearlake Oaks	Biomist 4+12
10/5/2012 Sanderson	Island R.V. Park	Clearlake Oaks	Biomist 4+12
10/5/2012 Anderson	9241 Quarterhorse	Lower Lake	Biomist 4+12
10/5/2012 Anderson	Quarterhorse	Lower Lake	Biomist 4+12
10/5/2012 Anderson	Birch Ct., Stagecoach	Lower Lake	Biomist 4+12
10/17/2012 B. Hayes	Steele Wines	Kelseyville	Agnique MMF

---

**of the U.S. Treatment Log for Lake Co., CA**

---

Amount(gal., unless noted)	Area(acres)	Time	Water Body	Lat	Long
1.00 lb	0.1	11:30 AM	Ditch	39.1656	-122.9070
0.25	0.1	11:00 AM	Ditch	39.1491	-122.8899
10 lb.	0.5	10:00 AM	Cache Creek	38.9338	-122.6325
1.8 lbs.	0.2	8:30 AM	Swale	38.9969	-122.8594
13.0 lbs	1.7	9:45 AM	Ditches	39.0238	-122.8475
4.0 lbs.	0.4	10:23 AM	Old Cole Cr. Meander	39.0011	-122.8164
5.00 lbs	0.1	12:30 PM	Canal	39.1423	-122.8893
1.00 lb	0.0	1:00 PM	Ditch	39.1459	-122.8945
8 lb.	0.5	10:30 AM	Cache Creek	38.9338	-122.6325
0.13	0.0	1:00 PM	Herndon Creek	38.9194	-122.5893
18.0 lbs.	2.3	9:00 AM	Clear Lake Cutoff Pools	39.0170	-122.8093
4.00 lbs	0.0	2:00 PM	Rodmans Slough	39.1212	-122.8920
0.32	25.0	3:00 AM	Anderson Springs	38.7730	-122.6906
0.18	14.0	3:15 AM	Putah Creek	38.7775	-122.6797
0.82	64.0	4:30 AM	Crazy Creek	38.7740	-122.5594
0.34	263.0	2:48 AM	Clear Lake	39.0277	-122.8498
0.52	40.3	5:05 AM	Clear Lake	39.0177	-122.8928
0.33	25.6	3:40 AM	Cole Cr.	38.9424	-122.8156
0.29	22.5	4:02 AM	Clear Lake	38.9755	-122.7410
0.94	73.0	4:15 AM	Ponds	38.7221	-122.5556
0.21	21.0	4:35 AM	Ponds	38.7084	-122.5355
4.00	2.0	11:35 AM	Lyon's Cr.	39.1104	-122.9067
0.01	0.8	3:25 AM	Cache Creek	38.9259	-122.6126
0.02	1.5	3:25 AM	Cache Creek	38.9259	-122.6126

0.05	3.8	4:15 AM	Burms Valley Creek	38.9624	-122.6473
0.08	6.2	5:00 AM	Burns Valley Creek	38.9661	-122.6343
0.30	23.3	3:19 AM	Clear Lake	38.9799	-122.7379
0.18	13.9	3:28 AM	Vernal Pool	38.9477	-122.7331
0.53	41.1	3:55 AM	Clear Lake	38.9426	-122.6532
0.27	20.9	1:50 AM	Adobe Cr.	39.0146	-122.9053
0.17	13.2	2:11 AM	Pond + Drainage Ditch	39.0064	-122.9095
0.18	14.0	4:45 AM	Hidden Valley Lake	38.8097	-122.5584
1.88	146.0	4:00 AM	Drainage Ditches	38.7827	-122.5234
0.56	43.0	3:30 AM	Ponds	38.7278	-122.5475
0.51	40.0	5:00 AM	Murphy Springs, Black Diamond Lake	38.8734	-122.6355
0.23	17.8	2:00 AM	Clear Lake	38.9524	-122.6971
0.27	20.9	2:23 AM	5th St Drainage Ditch	39.0452	-122.9251
0.23	17.8	3:45 AM	McGaugh Creek	38.9722	-122.8609
1.43	110.9	5:00 AM	Cache Creek	38.9214	-122.6140
0.09	6.9	3:30 AM	Herndon Creek	38.9174	-122.5900
0.03	2.3	3:40 AM	Copsey Creek	38.9171	-122.5950
0.02	1.5	3:40 AM	Copsey Creek	38.9171	-122.5950
0.03	2.3	3:50 AM	Copsey Creek	38.9163	-122.5959
0.05	3.8	3:50 AM	Copsey Creek	38.9163	-122.5959
0.02	1.5	4:30 AM	Clear Lake	38.9720	-122.6697
0.02	1.5	4:30 AM	Clear Lake	38.9720	-122.6697
0.76	118.0	4:00 AM	Bucksnot Creek, pasture ditches	38.7339	-122.5245
0.40	62.0	4:45 AM	St Helena Crk/Putah Creek	38.7639	-122.6038
0.50	0.3	10:15 AM	Clear Lake	39.0194	-122.7469
2.00	1.0	11:02 AM	Drainage Ditches	38.9738	-122.8421
10.00	5.0	11:50 AM	Pond	39.0718	-122.9331
10.00	5.0	11:40 AM	Pond	38.9220	-122.8867



0.13	0.0	9:38 AM	Winery Ponds	38.9922	-122.8740
0.16	12.0	3:20 AM	Clear Lake	39.0221	-122.6653
0.06	9.5	4:10 AM	Clear Lake	39.0583	-122.7813
0.18	14.0	4:20 AM	Morrison Creek	39.0971	-122.7986
2.06	160.0	4:30 AM	St Helena Creek	38.7524	-122.6152
0.29	22.5	3:15 AM	Seigler Canyon Creek/Pond	38.9087	-122.6222
0.14	10.8	3:40 AM	Clear Lake	38.9390	-122.6330
0.07	5.4	3:45 AM	Clear Lake	38.9409	-122.6317
0.32	24.8	4:40 AM	Clear Lake	38.9802	-122.6854
0.12	9.0	3:15 AM	Blue Lakes	39.1651	-123.0030
0.38	29.0	3:45 AM	Middle Creek	39.2358	-122.9437
0.45	35.0	3:41 AM	Springs	38.8215	-122.7207
0.08	6.0	3:48 AM	Jones Creek	38.8240	-122.7148
0.10	8.0	4:02 AM	Kelsey Creek, Springs	38.8120	-122.7140
0.41	32.0	4:15 AM	Kelsey Creek	38.8298	-122.7298
0.20	16.0	4:32 AM	Ponds	38.8692	-122.7399
0.20	15.5	2:02 AM	Dr. Lewis' Pond	39.0092	-122.9210
0.24	18.6	2:36 AM	Pond	39.0229	-122.9204
0.19	14.7	2:59AM	Martin St Ditch	39.0403	-122.9221
0.08	6.2	3:49 AM	Page Park Drainage	39.0529	-122.9256
0.40	31.0	3:38 AM	Drainage Ditches	39.0663	-122.9234
0.07	5.4	3:55 AM	Clear Lake	39.0977	-122.8988
1.15	89.0	3:27 AM	Putah Creek	38.7743	-122.5218
0.69	54.0	3:52 AM	Crazy Creek	38.7740	-122.5594
0.43	33.0	4:41 AM	ponds	38.8832	-122.6243
0.05	3.9	1:50 AM	Drainage Ditches	39.0076	-122.9078
0.05	3.9	2:31 AM	Adobe Creek	39.0024	-122.8740
0.38	29.4	3:03 AM	Cole Cr.	39.0093	-122.8178

0.08	6.2	2:50 AM	Clayton Creek	38.8942	-122.6047
0.08	6.2	2:50 AM	Clayton Creek	38.8942	-122.6047
0.08	6.2	2:50 AM	Clayton Creek	38.8942	-122.6047
0.09	7.0	3:10 AM	Pond	38.8959	-122.5439
0.12	9.3	3:00 AM	Ditch	39.1556	-122.8916
0.10	7.8	3:10 AM	Ditch	39.1639	-122.8982
0.18	14.0	3:40 AM	Middle Creek	39.2358	-122.9437
0.06	4.7	3:50 AM	Ditch	39.1705	-122.9115
0.35	27.0	4:15 AM	Tule Lake	39.1688	-122.9437
0.39	30.0	3:17 AM	Anderson Springs	38.7758	-122.6888
0.26	20.0	3:38 AM	St Helena Creek	38.7083	-122.6047
0.94	73.0	4:08 AM	Dry Creek	38.7385	-122.6275
0.11	8.5	3:30 AM	Cache Creek	38.9240	-122.6052
0.22	17.0	3:40 AM	Pond	38.9294	-122.5968
0.04	3.1	4:05 AM	Clear Lake	38.9411	-122.6324
0.04	3.1	4:05 AM	Clear Lake	38.9411	-122.6324
0.46	35.6	4:20 AM	Clear Lake	38.9472	-122.6336
0.02	1.6	4:35 AM	Clear Lake	38.9647	-122.6502
0.14	22.0	4:00 AM	Canal	39.1530	-122.9079
0.12	18.5	4:40 AM	Ditch	39.1047	-122.9758
0.40	62.0	4:24 AM	St Helena Crk, Putah Creek	38.7639	-122.6038
0.42	33.0	2:48 AM	Cole Creek	38.8889	-122.7305
0.24	20.0	4:14 AM	Kelsey Creek, Springs	38.8120	-122.7140
0.18	15.0	4:24 AM	Kelsey Creek	38.8264	-122.7252
0.31	24.0	2:40 AM	Adobe Cr.	39.0163	-122.9061
0.17	13.2	2:46 AM	Adobe Cr.	39.0146	-122.9053
0.09	7.0	3:06 AM	Drainage Ditch	38.9983	-122.8935
0.13	10.1	3:35 AM	Forbes Cr.	39.0407	-122.9170

0.16	12.4	3:47 AM	Clear Lake	39.1023	-122.8994
0.06	4.6	5:00 AM	Cache Creek	38.9325	-122.6307
0.07	5.4	3:55 AM	Burns Valley Creek	38.9695	-122.6208
0.08	6.2	3:55 AM	Burns Valley Creek	38.9695	-122.6208
0.03	2.3	4:45 AM	Molesworth Creek	38.9406	-122.6280
0.83	129.0	4:30 AM	Bucksnot Creek, pasture ditches	38.7339	-122.5245
0.06	4.7	2:20 AM	Ditch	39.1677	-122.9110
0.07	5.0	2:30 AM	Tule Lake	39.1670	-122.9533
0.41	32.0	4:00 AM	Wolf Creek	39.0659	-122.5819
0.39	30.0	4:30 AM	Clear Lake	39.0221	-122.9095
0.30	23.0	3:07 AM	St Helena Crk	38.7082	-122.6046
2.19	255.0	4:32 AM	Golf Course ponds, Coyote Creek	38.7964	-122.5561
0.52	40.0	2:12 AM	Clear Lake	39.0176	-122.8927
0.50	38.8	2:27 AM	Clear Lake	39.0250	-122.8835
0.07	5.4	2:37 AM	Clear Lake	39.0187	-122.8622
0.12	9.3	2:42 AM	Mc Gaugh Cr.	39.0099	-122.8637
0.41	31.8	2:58 AM	Clear Lake	39.0191	-122.8555
0.33	25.6	3:13 AM	Clear Lake	39.0028	-122.7931
1.61lbs.	0.1	9:30 AM	Winery Ponds	38.9922	-122.8740
21.0 lbs.		1:30 PM	Drainage ditch	38.7743	-122.5218
8.26 lbs.	0.0	1:30 PM	Drainage ditch	38.7743	-122.5218
0.26	20.0	2:20 AM	Middle Creek	39.1856	-122.9096
0.10	8.0	2:45 AM	Clear Lake	39.0692	-122.7831
0.22	17.0	3:20 AM	Clear Lake	39.0221	-122.6653
0.07	5.4	4:40 AM	Clear Lake/Burns Valley Creek	38.9618	-122.6504
8.00	4.0	9:45 AM	Adobe Cr.	38.9970	-122.8772
10.00	5.0	10:35 AM	Clear Lake	39.0131	-122.7494
0.09	7.0	4:30 AM	Cole Creek	38.9733	-122.8264

1.89	147.0	3:51 AM	Putah Creek	38.7743	-122.5218
0.03	2.3	3:35 AM	Clear Lake	39.0807	-122.9048
0.09	7.0	3:56 AM	Cole Creek	38.9728	-122.8259
0.09	7.0	4:30 AM	Cole Creek	38.9732	-122.8263
0.05	3.8	4:35 AM	Burns Valley Creek	38.9683	-122.6294
1.12	86.9	5:00 AM	Cache Creek	38.9214	-122.6140
0.05	1.0	2:45 PM	Puddles, ditches	38.7339	-122.5245
2.45lbs.	2.0	2:45 PM	Pasture, ditches	38.7339	-122.5245
8.1 lbs.	4.0	12:00 PM	Pasture, ditches	38.7339	-122.5245
40.00	20.0	12:30 PM	Pasture, ditches	38.7339	-122.5245
10.00	5.0	2:30 PM	Pond, Crazy Creek	38.7729	-122.5652
1.16	90.0	4:36 AM	Putah Creek	38.7743	-122.5218
0.12	9.3	2:01 AM	Drainage Ditches	39.0427	-122.9239
0.10	7.8	2:08 AM	11th St ponds	39.0502	-122.9299
0.41	31.8	2:31 AM	Clear Lake	39.1095	-122.8928
0.09	7.0	3:19 AM	Clear Lake	39.0184	-122.8926
0.11	8.5	3:33 AM	McGaugh Slough Drainage	38.9723	-122.8612
1.02	158.0	3:52 AM	Bucksnot Creek, pasture ditches	38.7339	-122.5245
0.11	8.5	3:40 AM	Blue Lakes	39.1651	-123.0030
0.09	7.0	4:00 AM	Scotts Creek	39.0405	-122.9695
0.54	42.0	3:40 AM	Kelsey Creek	38.8352	-122.7298
0.22	17.0	3:58 AM	Springs	38.8213	-122.7207
0.22	17.0	4:00 AM	Cache Creek	38.9315	-122.6269
0.00	0.0	4:00 AM	Cache Creek	38.9315	-122.6269
1.49	116.0	3:42 AM	Anderson Springs	38.7745	-122.6905
0.10	7.8	2:31 AM	Clear Lake	39.0554	-122.9146
0.25	19.4	2:56 AM	Clear Lake	39.0733	-122.9123
0.22	17.1	3:06 AM	Clear Lake	39.1027	-122.8984

0.18	14.0	3:21 AM	Todd Rd Drainage Creek	39.0272	-122.9238
0.40	31.0	3:50 AM	Clear Lake	39.0028	-122.7931
0.23	17.8	4:11 AM	Cole Creek	38.9317	-122.8065
110 lbs.	15.0	9:30 AM	Bucksnot Creek, pasture ditches	38.7339	-122.5245
0.26	20.0	2:55 AM	Ditch	39.1459	-122.8945
0.18	14.0	3:05 AM	Ditch	39.1639	-122.8982
0.08	6.2	4:10 AM	Clear Lake	39.0221	-122.6653
0.57	44.0	3:58 AM	Ponds	38.7278	-122.5475
0.68	53.0	5:14 AM	Putah Creek	38.7906	-122.5699
1.45	150.0	4:43 AM	Bucksnot Creek, pasture ditches	38.7339	-122.5245
6.00	3.0	10:15 AM	Clear Lake	39.0190	-122.7502
10.00	5.0	9:15 AM	Compton Creek	39.0781	-122.9227
5.00 lbs	1.0	11:00 AM	Ditch	39.1491	-122.8899
0.38	1.0	3:30 PM	Ditch	39.1491	-122.8899
0.14	11.0	12:30 AM	Ditch	39.1491	-122.8899
0.63	49.0	4:10 AM	Kelsey Creek	38.8272	-122.7229
0.38	29.0	4:43 AM	Springs	38.8213	-122.7207
0.37	29.0	5:03 AM	Kelsey Creek	38.8319	-122.7317
0.14	10.9	2:30 AM	Compton Creek	39.0779	-122.9235
0.07	5.4	3:09 AM	Clear Lake	39.0176	-122.8927
0.28	21.7	3:25 AM	Clear Lake	39.0191	-122.8555
0.27	20.9	4:15 AM	Clear Lake	39.0195	-122.7469
0.03	0.0	10:20 AM	Winery Ponds	38.9922	-122.8740
22.00	11.0	9:08 AM	Bucksnot Creek, pasture ditches	38.7339	-122.5245
0.14	11.0	4:20 AM	Ditch	39.1603	-122.9065
0.34	26.0	4:30 AM	Tule Lake	39.1688	-122.9437
0.40	31.0	4:40 AM	Saratoga Creek	39.1748	-122.9815
0.35	27.0	3:14 AM	Putah Creek	38.8482	-122.6768

0.05	3.9	3:31 AM Spring	38.8126	-122.7144
0.40	31.0	3:45 AM Kelsey Creek	38.8339	-122.7297
0.18	14.0	4:22 AM Cole Creek	38.9317	-122.8065
0.08	6.2	3:40 AM Clayton Creek	38.8942	-122.6047
0.09	6.9	3:40 AM Clayton Creek	38.8942	-122.6047
0.04	3.1	4:18 AM Burns Valley Creek	38.9611	-122.6454
0.10	7.7	4:23 AM Clear Lake	38.9631	-122.6500
0.45	34.9	4:00 AM Clear Lake	38.9472	-122.6336
0.11	8.5	4:20 AM Clear Lake	38.9489	-122.6353
0.12	9.3	4:20 AM Clear Lake	38.9602	-122.6481
0.28	22.0	3:50 AM Clear Lake	39.1493	-122.8906
0.46	36.0	4:25 AM Saratoga Creek	39.1748	-122.9815
1.72	200.0	4:06 AM Golf Course ponds, Detert Lake	38.7249	-122.5136
0.41	32.0	5:20 AM Murphy Springs, Black Diamond Lake	38.8734	-122.6355
0.20	15.5	2:42 AM Clear Lake	39.1027	-122.8984
0.43	33.3	3:10 AM Clear Lake	39.0176	-122.8927
0.07	5.4	3:16 AM Clear Lake	39.0170	-122.8898
0.42	32.6	3:29 AM Clear Lake	39.0277	-122.8498
0.33	25.6	3:42 AM Clear Lake	39.0028	-122.7931
0.03	2.3	3:49 AM Clear Lake	38.9977	-122.7501
0.10	7.8	4:02 AM Clear Lake	39.0136	-122.7497
0.29	22.5	4:40 AM Cole Cr.	38.9317	-122.8065
1.10	156.0	3:45 AM Clear Lake	39.1367	-122.8937
0.99	154.0	4:48 AM Bucksnot Creek, pasture ditches	38.7339	-122.5245
0.05	3.8	3:50 AM Cache Creek	38.9297	-122.6267
0.13	10.0	4:00 AM Clear Lake	38.9390	-122.6330
0.07	5.4	4:05 AM Clear Lake	38.9409	-122.6317
380 lbs.	55.0	6:00 AM Irrigated Pasture, Ditches	38.7760	-122.5518

1.16	90.0	4:20 AM	Long Valley Creek	39.0728	-122.6560
0.06	4.6	5:10 AM	Ditch	39.1456	-122.8861
0.10	7.8	2:30 AM	Ditch	39.1556	-122.8916
0.12	9.0	3:26 AM	Kelsey Creek	38.8271	-122.7287
0.07	100.0	11:00 AM	Ditch	39.1441	-122.8958
1.92	297.0	4:50 AM	Clear Lake	39.1367	-122.8937
.08 lbs.	1.0	1:35 PM	Golf Course Pond	38.7249	-122.5136
0.14	11.0	3:21 AM	Anderson Springs	38.8099	-122.7109
0.15	12.0	4:01 AM	Ag Pond	38.9809	-122.9112
0.30	24.0	4:28 AM	Adobe Creek	39.0043	-122.8732
0.02	1.5	4:40 AM	Clear Lake	38.9666	-122.6538
0.02	1.5	4:50 AM	Clear Lake	38.9677	-122.6549
0.09	6.9	5:15 AM	Clear Lake	39.0037	-122.7078
0.35	54.0	3:51 AM	Hoodoo Creek	38.7341	-122.6274
325.00	410.0	5:00 AM	Wild rice fields	39.1367	-122.8937
0.22	17.0	3:15 AM	McGaugh Slough	39.0097	-122.8635
0.10	8.0	3:19 AM	McGaugh Slough	39.0186	-122.8622
0.32	25.0	3:31 AM	pond	39.0191	-122.8555
0.49	38.0	3:50 AM	pond & Cole Creek	39.0152	-122.8169
0.13	10.0	4:40 AM	Clear Lake	38.9501	-122.6894
0.13	0.1	1:30 PM	Winery Ponds	38.9922	-122.8740
0.54	42.0	1:53 AM	Cole Creek	38.8889	-122.7305
0.38	29.0	2:59 AM	Anderson Springs	38.8086	-122.7112
0.74	57.0	3:31 AM	Pond	38.7221	-122.5556
0.19	14.7	3:18 AM	Clear Lake	39.0186	-122.8622
0.17	13.2	3:52 AM	Clear Lake	39.0193	-122.7495
0.95	147.0	4:58 AM	Bucksnot Creek, pasture ditches	38.7339	-122.5245
2.03 lbs.	1.0	10:34 AM	Pasture, ditches	38.7339	-122.5245

1.79	139.0	10:10 AM	Bucksnot Creek, pasture ditches	38.7339	-122.5245
0.25	19.0	3:10 AM	Clear Lake	39.1232	-122.8686
0.39	30.0	3:23 AM	Cole Creek	39.0093	-122.8178
0.25	19.4	4:55 AM	Clear Lake	38.9802	-122.6854
0.08	6.2	4:20 AM	Cache Creek	38.9259	-122.6085
1.97	305.0	4:45 AM	Clear Lake	39.1367	-122.8937
1.87	218.0	4:02 AM	Golf Course ponds, Detert Lake	38.7249	-122.5136
2.18	169.0	4:50 AM	Putah Creek	38.7743	-122.5218
1.40	217.0	3:22 AM	Bucksnot Creek, pasture ditches	38.7339	-122.5245
0.27	21.0	3:45 AM	Clear Lake	39.0193	-122.7495
0.13	10.0	4:35 AM	Clear Lake	39.1083	-122.8932
0.40	31.0	4:35 AM	Clear Lake	39.1098	-122.8928
1.71	263.0	5:40 AM	Wild rice fields	39.1595	-122.9387
1.14	177.0	4:40 AM	Bucksnot Creek, pasture ditches	38.7339	-122.5245
0.25	19.0	2:55 AM	Scotts Creek	39.1552	-122.9283
0.13	0.0	9:40 AM	Winery Ponds	38.9922	-122.8740
0.33	25.0	2:40 AM	Saratoga Creek	39.1748	-122.9815
1.27	98.0	3:30 AM	Robbinson Creek	39.1375	-122.9211
0.04	3.1	5:30 AM	Clear Lake	39.0221	-122.6653
1.65	255.0	4:30 AM	Clear Lake	39.1367	-122.8937
0.15	11.6	3:02 AM	Clear Lake	39.1023	-122.8994
0.04	3.1	3:20 AM	Adobe Creek	39.0043	-122.8731
0.42	32.6	4:15 AM	Clear Lake	39.0028	-122.7931
0.51	39.5	5:12 AM	Clear Lake	38.9419	-122.6532
0.04	3.1	4:20 AM	Cache Creek	38.9259	-122.6126
1.10	85.3	4:30 AM	Cache Creek	38.9214	-122.6140
1.66	129.0	4:58 AM	Golf Course ponds, Detert Lake	38.7249	-122.5136
1.31	203.0	4:25 AM	Bucksnot Creek, pasture ditches	38.7339	-122.5245



	0.29	22.5	3:20 AM Saratoga Creek	39.1748	-122.9815
	2.15	333.0	4:40 AM Clear Lake	39.1367	-122.8937
	2.12	164.3	4:20 AM Wild rice fields	39.1595	-122.9387
	0.06	0.0	9:30 AM Winery Ponds	38.9922	-122.8740
	0.31	24.0	3:41 AM Cole Creek & Kelsey Creek	39.0151	-122.8179
	0.21	16.3	4:23 AM Clear Lake	39.1083	-122.8932
	0.77	59.7	5:33 AM Clover Creek and Ditches	39.1638	-122.9092
	0.07	5.4	4:30 AM Cache Creek	38.9224	-122.5954
	5.00	2.5	10:00 AM Blue Lakes	39.1657	-123.0036
2992 lbs.		374.0	5:45 AM Wild rice fields	39.1595	-122.9387
3280 lbs.		410.0	5:45 AM Wild rice fields	39.1367	-122.8937
	6.00	3.0	9:05 AM Lyons Creek	39.1104	-122.9067
	2.47	191.0	3:20 AM Clover Creek	39.1638	-122.9092
	0.92	71.0	3:55 AM Blue Lakes	39.1771	-123.0169
	0.60	46.0	6:50 AM Middle Creek	39.1367	-122.8937
	2.41	206.0	4:30 AM Golf Course ponds, Detert Lake	38.7249	-122.5136
	0.52	40.0	4:47 AM Ponds	38.7278	-122.5475
	0.57	44.0	5:12 AM Crazy Creek, Pond	38.7740	-122.5594
	0.20	15.5	4:01 AM Clear Lake	39.1027	-122.8984
	0.14	11.0	4:18 AM Clear Lake	39.0170	-122.8898
	0.30	23.0	4:35 AM Clear Lake	39.0191	-122.8555
	1.78	275.0	5:00 AM Scotts Creek	39.1595	-122.9387
	2.17	277.0	3:36 AM Clear Lake	39.1367	-122.8937
	1.51	234.0	3:49 AM Bucksnot Creek, pasture ditches	38.7339	-122.5245
	1.39	108.0	3:30 AM Clear Lake	39.1232	-122.8686
	0.63	49.0	4:20 AM Ditch	39.0991	-122.8017
	1.43	110.0	5:30 AM Clover Creek	39.1638	-122.9092
	0.31	24.0	4:44 AM Kelsey Creek	38.8319	-122.7317

0.38	29.5	4:30 AM	Cache Creek	38.9315	-122.6269
1.44	111.7	5:00 AM	Cache Creek	38.9214	-122.6140
2.00	156.0	4:15 AM	Clover Creek	39.1638	-122.9092
0.33	25.5	5:15 AM	Clear Lake	38.9799	-122.7379
0.41	32.0	5:50 AM	Cole Creek Headwaters	38.9180	-122.7785
2.21	333.0	5:10 AM	Scotts Creek	39.1595	-122.9387
1.33	103.0	3:14 AM	Springs, Cole Creek	38.9258	-122.7687
0.10	8.0	3:24 AM	Cole Creek	38.8901	-122.7313
0.11	9.0	3:44 AM	Kelsey Creek	38.8285	-122.7303
0.04	3.1	3:30 AM	Cache Creek	38.9259	-122.6126
0.02	1.5	3:25 AM	Cache Creek	38.9259	-122.6126
0.42	32.6	3:40 AM	Clear Lake	38.9472	-122.6336
1.18	91.5	4:10 AM	Clear Lake	39.0207	-122.6637
0.34	53.0	5:02 AM	Bucksnot Creek, pasture ditches	38.7339	-122.5245
110 lbs	11.0	1:30 PM	Clear Lake	39.0221	-122.6653
1.58	203.5	3:25 AM	Clear Lake	39.0221	-122.6653
2.70	281.0	6:00 AM	Clear Lake	39.1367	-122.8937
2.10	323.0	4:50 AM	Scotts Creek	39.1595	-122.9387
110 lbs	11.0	9:50 AM	Irrigated pasture	38.9270	-122.7693
4 lbs	0.4	10:55 AM	Pond	38.9166	-122.7753
1.28	99.0	2:58 AM	Springs, Cole Creek	38.9258	-122.7687
0.09	7.0	3:34 AM	Kelsey Creek	38.8323	-122.7283
0.39	30.0	4:10 AM	St. Helena Creek, Putah Creek	38.7639	-122.6038
0.30	23.3	3:12 AM	Clear Lake	39.1046	-122.8976
0.21	16.3	3:36 AM	Clear Lake	39.0191	-122.8555
0.21	16.3	3:36 AM	Clear Lake	39.1091	-122.8555
0.14	10.9	4:06 AM	Clear Lake	39.1093	-122.7486
0.10	7.8	3:56 AM	Clear Lake	39.0020	-122.7502

0.06	4.6	2:50 AM	Clear Lake, Burns Cr.	38.9618	-122.6504
0.50	38.7	3:00 AM	Cache Cr.	38.9315	-122.6762
0.07	5.4	3:15 AM	Cache Cr.	38.9274	-122.6179
0.36	27.9	3:20 AM	Cache Cr., Siegler Cr.	38.9201	-122.6118
1.54	119.5	3:30 AM	Cache Cr.	38.9214	-122.6140
0.19	19.0	2:30 AM	Morrison Creek	39.0971	-122.7986
1.03	107.0	3:20 AM	Robbinson Creek	39.1375	-122.9211
1.87	230.0	5:00 AM	Clover Creek	39.1638	-122.9092
6.00	3.0	10:45 AM	Compton Creek	39.0781	-122.9227
10 lbs.	1.0	10:30 AM	Copsey Cr.	38.9179	-122.5961
0.71	55.0	2:15 AM	Clear Lake	39.1222	-122.8682
1.50	116.0	3:30 AM	Clover Creek	39.1638	-122.9092
3.60	279.0	3:55 AM	Clear Lake	39.1367	-122.8937
0.25	19.0	2:49 AM	Ettawa Springs	38.8507	-122.6890
1.17	91.0	3:44 AM	Putah Creek	38.7743	-122.5218
2.08	242.0	5:00 AM	Golf Course ponds, Coyote Creek	38.7964	-122.5561
0.08	6.0	2:50 AM	Keeling Drainage Ditch	39.0702	-122.9195
0.21	16.0	3:01 AM	Clear Lake	39.1027	-122.8984
0.37	29.0	3:49 AM	Clear Lake	39.0028	-122.7931
0.27	21.0	4:18 AM	Clear Lake	38.9755	-122.7410
0.14	11.0	4:38 AM	Cole Creek	38.9424	-122.8156
2.15	333.0	5:00 AM	Scotts Creek	39.1595	-122.9387
0.49	38.0	3:00 AM	Clear Lake	39.1232	-122.8686
0.46	36.0	3:15 AM	Clover Creek	39.1638	-122.9992
0.47	36.0	3:35 AM	Saratoga Creek	39.1748	-122.9815
0.49	38.0	3:45 AM	Ditch	39.1662	-122.9102
2.17	168.0	5:00 AM	Clear Lake	39.0221	-122.6653
1.12	87.0	2:56 AM	Springs, Cole Creek	38.9258	-122.7687

0.86	67.0	3:46 AM	Anderson Springs	38.7745	-122.6905
1.58	184.0	5:21 AM	Golf Course ponds, Detert Lake	38.7249	-122.5136
1.21	94.0	4:50 AM	Clear Lake	39.1005	-122.8992
0.06	6.2	4:20 AM	Cache Cr.	38.9274	-122.6179
0.40	41.6	4:30 AM	Cache Cr.	38.9315	-122.6269
0.26	27.0	4:45 AM	Cache Cr., Siegler Cr.	38.9201	-122.6118
1.13	117.6	5:00 AM	Cache Cr.	38.9214	-122.6140
0.30	46.0	4:01 AM	Kelsey Creek	38.9132	-122.8550
0.16	25.0	4:32 AM	Compton Creek	39.0779	-122.9235
1.04	152.0	4:49 AM	Bucksnoert Creek, pasture ditches	38.7339	-122.5245
0.35	27.0	3:00 AM	Ditch	39.0197	-122.6541
1.89	146.0	4:40 AM	Clear Lake	39.0221	-122.6653
3.40	264.0	5:50 AM	Clear Lake	39.1367	-122.8937
0.02	1.5	4:20 AM	Clear Lake	38.9851	-122.6957
0.03	2.3	4:20 AM	Clear Lake	38.9851	-122.6957
0.02	1.5	4:20 AM	Clear Lake	38.9849	-122.6965
0.02	1.5	4:20 AM	Clear Lake	38.9849	-122.6965
0.02	1.5	4:20 AM	Clear Lake	38.9849	-122.6965
0.02	1.5	4:20 AM	Clear Lake	38.9849	-122.6965
0.24	24.9	4:00 AM	Clear Lake	38.9802	-122.6854
1.09	85.0	3:06 AM	Springs, Cole Creek	38.9258	-122.7687
0.15	12.0	3:30 AM	Kelsey Creek	38.8264	-122.7252
0.02	1.5	3:50 AM	Copsey Cr.	38.9171	-122.5950
0.30	23.2	4:10 AM	Cache Cr., Herdon Cr.	38.9235	-122.5904
1.13	87.6	4:30 AM	Copsey Cr.	38.9155	-122.5945
0.14	10.8	4:50 AM	Cache Cr.	38.9239	-122.6092
0.05	3.8	5:00 AM	Cache Cr.	38.9225	-122.5956
0.20	15.5	5:15 AM	Cache Cr.	28.9247	-122.6065

1.25	194.0	4:36 AM	Bucksnot Creek, pasture ditches	38.7339	-122.5245
2.02	157.0	3:25 AM	Clear Lake	39.0221	-122.6653
2.20	171.0	4:30 AM	Clover Creek	39.1638	-122.9092
0.30	23.0	4:40 AM	Blue Lakes	39.1651	-123.0080
2.84	220.0	5:40 AM	Scotts Creek	39.1595	-122.9387
2 lbs	0.2	11:30 AM	Clear Lake	39.0221	-122.6653
1.14	88.0	3:10 AM	Springs, Cole Creek	38.9258	-122.7687
1.45	169.0	4:26 AM	Golf Course ponds, Detert Lake	38.7249	-122.5136
0.08	6.2	3:03 AM	Clear Lake	39.0861	-122.9012
0.36	28.0	4:01 AM	Clear Lake	39.1098	-122.8928
0.33	25.5	4:30 AM	Clear Lake	39.0176	-122.8927
0.09	7.0	5:18 AM	Clear Lake	39.0081	-122.7816
1.28	99.3	4:45 AM	Cache Cr.	38.9214	-122.6140
0.04	3.1	4:15 AM	Cache Cr.	38.9259	-122.6125
2.11	164.0	3:30 AM	Clear Lake	39.0221	-122.6653
2.12	164.0	4:30 AM	Clover Creek	39.1638	-122.9092
1.23	95.0	5:30 AM	Scotts Creek	39.1575	-122.9387
0.08	6.2	3:40 AM	Clear Lake	39.0483	-122.9134
2.58	200.0	3:05 AM	Clear Lake	39.0221	-122.6653
180 lbs	18.0	9:20 AM	Clear Lake	39.0221	-122.6653
0.46	35.7	3:30 AM	Cole Creek	39.0093	-122.8178
1.42	110.0	3:15 AM	Robbinson Creek	39.1375	-122.9211
2.50	194.0	4:30 AM	Clear Lake	39.0221	-122.9092
1.16	90.0	4:19 AM	Putah Creek	38.7743	-122.5218
1.25	96.9	5:00 AM	Cache Cr.	38.9214	-122.6140
2.84	220.1	3:00 AM	Clear Lake	39.0221	-122.6653
0.25	0.1	9:30 AM	Winery Ponds	38.9922	-122.8740
0.18	14.0	3:00 AM	Blue Lakes	39.1651	-123.0030

2.38	184.0	4:40 AM	Clear Lake	39.0221	-122.6653
1 lb	0.5	11:00 AM	Clear Lake	39.0418	-122.7510
0.58	45.0	4:00 AM	Clear Lake	39.0418	-122.7510
1.33	104.0	4:30 AM	Clear Lake	39.0221	-122.6653
1.92	148.8	4:10 AM	Clear Lake	39.0064	-122.9095
0.09	7.0	4:08 AM	Clear Lake	39.0192	-122.6723
0.10		4:40 AM	Copsey Cr.	38.9171	-122.5950
0.15		4:40 AM	Copsey Cr.	38.9192	-122.5935
0.24	18.6	4:50 AM	Copsey Cr.	38.9154	-122.5962
0.28	2 ponds	10:00 AM	Winery Ponds	38.9922	-122.8740

---

Application Info				
Date of Application	Applicator	Location	Name of Water Body	Type of Water Body

06/20/2012	Brad Hayes	Lake Pillsbury Ranch	Salmon Cr.	Channel
06/20/2012	Brad Hayes	Lake Pillsbury Ranch	Salmon Cr.	Channel
06/20/2012	Brad Hayes	Lake Pillsbury Ranch	Salmon Cr.	Channel

**2012 NPDES Monitorir**

			MONITORING Information			
Description	Type of pesticide	Product Name	Time of monitoring	Monitoring Date	Time	Name(s) of personnel

Adulticide	Biomist 4+12	Background	06/20/2012	2:00 am	Brad Hayes
Adulticide	Biomist 4+12	Event	06/20/2012	3:00 am	Brad Hayes
Adulticide	Biomist 4+12	Post-Event			



**ing of Treated WOTUS for Lake Co., CA, Region(1)**

Weather Conditions				Visual Ob			
Overhead Conditions	Precipitation	Wind	Air Temperature	Water Color	Water Clarity	Floating/Suspended Matter	Bottom Deposits

Clear/sunny	None	Calm	Cool	Colorless	Clear	Observed	Observed
Clear/sunny	None	Calm	Cool	Colorless	Clear	Observed	Observed
						Not Observed	Not Observed

Observation				Field Measurements				
Aquatic Life	Water Surface Oils	Fungi, Slimes or objectionable growths	Potential Nuisance Conditions	Water Temperature	Model	Electrical conductivity (EC)	Model	Dissolved oxygen (DO)

Observed	Not Observed	None		Field Inst./		/		
Observed	Not Observed	None		Field Inst./		/		
Not Observed	Not Observed	None		Field Inst./		/		

Model	pH	Model	Turbidity	Model
/	/			/
/	/			/
/	/			/

/ / /  
/ / /  
/ / /

<b>Date of Application</b>	<b>Applicator</b>	<b>Location</b>
03/02/2012	Brad Hayes	Hwy 20 + Reclamation Rd., Upperlake
03/02/2012	Brad Hayes	Hwy 20 + Reclamation Rd., Upperlake
03/02/2012	Brad Hayes	Hwy 20 + Reclamation Rd., Upperlake
03/02/2012	Brad Hayes	League St., Upperlake
03/02/2012	Brad Hayes	League St., Upperlake
03/02/2012	Brad Hayes	League St., Upperlake
03/09/2012	Brad Hayes	Pasture Ditch, Reclamation Rd., Upperlake
03/09/2012	Brad Hayes	Pasture Ditch, Reclamation Rd., Upperlake
03/09/2012	Brad Hayes	Pasture Ditch, Reclamation Rd., Upperlake
04/04/2012	Porter Anderson	Lakeview Way and Bay St., Clearlake
04/04/2012	Porter Anderson	Lakeview Way and Bay St., Clearlake
04/04/2012	Porter Anderson	Lakeview Way and Bay St., Clearlake
04/17/2012	Terry Sanderson	2850 Big Vly. Rd., Finley
04/17/2012	Terry Sanderson	2850 Big Vly. Rd., Finley
04/17/2012	Terry Sanderson	2850 Big Vly. Rd., Finley
04/17/2012	Terry Sanderson	Clarke Dr., Kelseyville
04/17/2012	Terry Sanderson	Clarke Dr., Kelseyville
04/17/2012	Terry Sanderson	Clarke Dr., Kelseyville
04/17/2012	Terry Sanderson	Park Dr., Kelseyville
04/17/2012	Terry Sanderson	Park Dr., Kelseyville
04/17/2012	Terry Sanderson	Park Dr., Kelseyville
05/01/2012	Sandi Courcier	Foard Rd., Anderson Springs
05/01/2012	Sandi Courcier	Foard Rd., Anderson Springs
05/01/2012	Sandi Courcier	Foard Rd., Anderson Springs
05/01/2012	Terry Sanderson	8920 Soda Bay Rd.
05/01/2012	Terry Sanderson	8920 Soda Bay Rd.
05/01/2012	Terry Sanderson	8920 Soda Bay Rd.
05/02/2012	Terry Sanderson	5772 Lakeshore Blvd., Lakeport
05/02/2012	Terry Sanderson	5772 Lakeshore Blvd., Lakeport
05/02/2012	Terry Sanderson	5772 Lakeshore Blvd., Lakeport
05/10/2012	Sandi Courcier	Hidden Valley
05/10/2012	Sandi Courcier	Hidden Valley
05/10/2012	Sandi Courcier	Hidden Valley
05/11/2012	Terry Sanderson	3750 White Way, Kelseyville
05/11/2012	Terry Sanderson	3750 White Way, Kelseyville
05/11/2012	Terry Sanderson	3750 White Way, Kelseyville
05/11/2012	Terry Sanderson	8835 Peterson Ln., Kelseyville
05/11/2012	Terry Sanderson	8835 Peterson Ln., Kelseyville
05/11/2012	Terry Sanderson	8835 Peterson Ln., Kelseyville
05/11/2012	Terry Sanderson	8525 Palace Dr., Kelseyville
05/11/2012	Terry Sanderson	8525 Palace Dr., Kelseyville
05/11/2012	Terry Sanderson	8525 Palace Dr., Kelseyville

05/14/2012	Terry Sanderson	Steele Winery, Argonaut Rd., Finley
05/14/2012	Terry Sanderson	Steele Winery, Argonaut Rd., Finley
05/14/2012	Terry Sanderson	Steele Winery, Argonaut Rd., Finley
05/15/2012	Brad Hayes	Clearlake Keys, Clearlake Oaks
05/15/2012	Brad Hayes	Clearlake Keys, Clearlake Oaks
05/15/2012	Brad Hayes	Clearlake Keys, Clearlake Oaks
05/15/2012	Porter Anderson	San Jaquin Ext., Clearlake
05/15/2012	Porter Anderson	San Jaquin Ext., Clearlake
05/15/2012	Porter Anderson	San Jaquin Ext., Clearlake
05/15/2012	Terry Sanderson	3384 Comptom, Lakeport
05/15/2012	Terry Sanderson	3384 Comptom, Lakeport
05/15/2012	Terry Sanderson	3384 Comptom, Lakeport
05/17/2012	Terry Sanderson	308 Dixon Dr., Lakeport
05/17/2012	Terry Sanderson	308 Dixon Dr., Lakeport
05/17/2012	Terry Sanderson	308 Dixon Dr., Lakeport
05/18/2012	Terry Sanderson	3550 Harris Ave., Finley
05/18/2012	Terry Sanderson	3550 Harris Ave., Finley
05/18/2012	Terry Sanderson	3550 Harris Ave., Finley
05/18/2012	Terry Sanderson	5130 Soda Bay Rd.
05/18/2012	Terry Sanderson	5130 Soda Bay Rd.
05/18/2012	Terry Sanderson	5130 Soda Bay Rd.
05/22/2012	Sandi Courcier	Hilderbrand Rd., Middletown
05/22/2012	Sandi Courcier	Hilderbrand Rd., Middletown
05/22/2012	Sandi Courcier	Hilderbrand Rd., Middletown
05/22/2012	Brad Hayes	Bridge Arbor Rd., Upperlake
05/22/2012	Brad Hayes	Bridge Arbor Rd., Upperlake
05/22/2012	Brad Hayes	Bridge Arbor Rd., Upperlake
05/23/2012	Terry Sanderson	450 Silva Ln., Lakeport
05/23/2012	Terry Sanderson	450 Silva Ln., Lakeport
05/23/2012	Terry Sanderson	450 Silva Ln., Lakeport
05/25/2012	Brad Hayes	Main and Mendenhall, Upperlake
05/25/2012	Brad Hayes	Main and Mendenhall, Upperlake
05/25/2012	Brad Hayes	Main and Mendenhall, Upperlake
05/31/2012	Terry Sanderson	Luchetti's Ranch, Grange Rd., Middletown
05/31/2012	Terry Sanderson	Luchetti's Ranch, Grange Rd., Middletown
05/31/2012	Terry Sanderson	Luchetti's Ranch, Grange Rd., Middletown
05/31/2012	Terry Sanderson	Luchetti's Ranch, Grange Rd., Middletown
05/31/2012	Terry Sanderson	Luchetti's Ranch, Grange Rd., Middletown
05/31/2012	Brad Hayes	10690 Rancheria Rd., Upperlake
05/31/2012	Brad Hayes	10690 Rancheria Rd., Upperlake
05/31/2012	Brad Hayes	10690 Rancheria Rd., Upperlake
05/31/2012	Porter Anderson	14043 Lakeshore Dr., Clearlake
05/31/2012	Porter Anderson	14043 Lakeshore Dr., Clearlake
05/31/2012	Porter Anderson	14043 Lakeshore Dr., Clearlake
05/31/2012	Terry Sanderson	1660 East Lake Dr., Kelseyville
05/31/2012	Terry Sanderson	1660 East Lake Dr., Kelseyville

05/31/2012	Terry Sanderson	1660 East Lake Dr., Kelseyville
05/31/2012	Terry Sanderson	4003 Thomas Dr., Finley
05/31/2012	Terry Sanderson	4003 Thomas Dr., Finley
05/31/2012	Terry Sanderson	4003 Thomas Dr., Finley
06/01/2012	Terry Sanderson	3570 Lakeshore Blvd, Lakeport
06/01/2012	Terry Sanderson	3570 Lakeshore Blvd, Lakeport
06/01/2012	Terry Sanderson	3570 Lakeshore Blvd, Lakeport
06/01/2012	Terry Sanderson	3188 Hillside Ct., Buckingham
06/01/2012	Terry Sanderson	3188 Hillside Ct., Buckingham
06/01/2012	Terry Sanderson	3188 Hillside Ct., Buckingham
06/01/2012	Terry Sanderson	5613 Single Spr. Rd., Kelseyville
06/01/2012	Terry Sanderson	5613 Single Spr. Rd., Kelseyville
06/01/2012	Terry Sanderson	5613 Single Spr. Rd., Kelseyville
06/01/2012	Sandi Courcier	Luchetti Ranch, Grange Rd., Middletown
06/01/2012	Sandi Courcier	Luchetti Ranch, Grange Rd., Middletown
06/01/2012	Sandi Courcier	Luchetti Ranch, Grange Rd., Middletown
06/01/2012	Porter Anderson	Anderson Marsh
06/01/2012	Porter Anderson	Anderson Marsh
06/01/2012	Porter Anderson	Anderson Marsh
06/01/2012	Porter Anderson	3045 Garner Ln.
06/01/2012	Porter Anderson	3045 Garner Ln.
06/01/2012	Porter Anderson	3045 Garner Ln.
06/04/2012	Sandi Courcier	Lantry, Foley 2, Middletown
06/04/2012	Sandi Courcier	Lantry, Foley 2, Middletown
06/04/2012	Sandi Courcier	Lantry, Foley 2, Middletown
06/05/2012	Sandi Courcier	Langtry, Middletown
06/05/2012	Sandi Courcier	Langtry, Middletown
06/05/2012	Sandi Courcier	Langtry, Middletown
06/05/2012	Sandi Courcier	Langtry, Middletown
06/05/2012	Sandi Courcier	Langtry, Middletown
06/05/2012	Sandi Courcier	Langtry, Middletown
06/08/2012	Sandi Courcier	Rainbow Rd., Cobb
06/08/2012	Sandi Courcier	Rainbow Rd., Cobb
06/08/2012	Sandi Courcier	Rainbow Rd., Cobb
06/08/2012	Porter Anderson	Highlands Harbor Dr., Clearlake
06/08/2012	Porter Anderson	Highlands Harbor Dr., Clearlake
06/08/2012	Porter Anderson	Highlands Harbor Dr., Clearlake
06/15/2012	Sandi Courcier	Langtry, Middletown
06/15/2012	Sandi Courcier	Langtry, Middletown
06/15/2012	Sandi Courcier	Langtry, Middletown
06/18/2012	Brad Hayes	Pasture Ditch, Reclamation Rd., Upperlake
06/18/2012	Brad Hayes	Pasture Ditch, Reclamation Rd., Upperlake
06/18/2012	Brad Hayes	Pasture Ditch, Reclamation Rd., Upperlake
06/19/2012	Brad Hayes	Pasture Ditch, Reclamation Rd., Upperlake
06/19/2012	Brad Hayes	Pasture Ditch, Reclamation Rd., Upperlake
06/19/2012	Brad Hayes	Pasture Ditch, Reclamation Rd., Upperlake
06/21/2012	Terry Sanderson	Steele Winery, Argonaut Rd., Finley

06/21/2012	Terry Sanderson	Steele Winery, Argonaut Rd., Finley
06/21/2012	Terry Sanderson	Steele Winery, Argonaut Rd., Finley
06/21/2012	Sandi Courcier	Langtry, Middletown
06/21/2012	Sandi Courcier	Langtry, Middletown
06/21/2012	Sandi Courcier	Langtry, Middletown
06/29/2012	Sandi Courcier	Belchers Pasture, Grange Rd., Middletown
06/29/2012	Sandi Courcier	Belchers Pasture, Grange Rd., Middletown
06/29/2012	Sandi Courcier	Belchers Pasture, Grange Rd., Middletown
07/05/2012	Sandi Courcier	Langtry Golf Course, Middletown
07/05/2012	Sandi Courcier	Langtry Golf Course, Middletown
07/05/2012	Sandi Courcier	Langtry Golf Course, Middletown
07/06/2012	Sandi Courcier	Maple Shadows Rd., Cobb
07/06/2012	Sandi Courcier	Maple Shadows Rd., Cobb
07/06/2012	Sandi Courcier	Maple Shadows Rd., Cobb
07/06/2012	Terry Sanderson	Hartley+Scotts Vly Rancheria Rd., Lakeport
07/06/2012	Terry Sanderson	Hartley+Scotts Vly Rancheria Rd., Lakeport
07/06/2012	Terry Sanderson	Hartley+Scotts Vly Rancheria Rd., Lakeport
07/09/2012	Terry Sanderson	N 39° 8.855' W 122° 54.190'
07/09/2012	Terry Sanderson	N 39° 8.855' W 122° 54.190'
07/09/2012	Terry Sanderson	N 39° 8.855' W 122° 54.190'
07/09/2012	Terry Sanderson	N 39° 8.026' W 122° 53.632'
07/09/2012	Terry Sanderson	N 39° 8.026' W 122° 53.632'
07/09/2012	Terry Sanderson	N 39° 8.026' W 122° 53.632'
07/11/2012	Terry Sanderson	4695 Steelhead Dr., Kelseyville
07/11/2012	Terry Sanderson	4695 Steelhead Dr., Kelseyville
07/11/2012	Terry Sanderson	4695 Steelhead Dr., Kelseyville
07/13/2012	Sandi Courcier	Salmina Rd., Cobb
07/13/2012	Sandi Courcier	Salmina Rd., Cobb
07/13/2012	Sandi Courcier	Salmina Rd., Cobb
07/13/2012	Sandi Courcier	Maple Shadows Dr., Cobb
07/13/2012	Sandi Courcier	Maple Shadows Dr., Cobb
07/13/2012	Sandi Courcier	Maple Shadows Dr., Cobb
07/13/2012	Brad Hayes	Reclamation Rd., Upperlake
07/13/2012	Brad Hayes	Reclamation Rd., Upperlake
07/13/2012	Brad Hayes	Reclamation Rd., Upperlake
08/06/2012	Terry Sanderson	N 39° 8.855' W 122° 54.190'
08/06/2012	Terry Sanderson	N 39° 8.855' W 122° 54.190'
08/06/2012	Terry Sanderson	N 39° 8.855' W 122° 54.190'
08/06/2012	Terry Sanderson	N 39° 8.026' W 122° 53.632'
08/06/2012	Terry Sanderson	N 39° 8.026' W 122° 53.632'
08/06/2012	Terry Sanderson	N 39° 8.026' W 122° 53.632'
08/06/2012	Terry Sanderson	N 39° 9.615' W 122° 56.202'
08/06/2012	Terry Sanderson	N 39° 9.615' W 122° 56.202'
08/06/2012	Terry Sanderson	N 39° 9.615' W 122° 56.202'
08/06/2012	Terry Sanderson	N 39° 10.088' W 122° 56.872'
08/06/2012	Terry Sanderson	N 39° 10.088' W 122° 56.872'
08/06/2012	Terry Sanderson	N 39° 10.088' W 122° 56.872'

## Application Info

Name of Water Body	Type of Water Body	Description	Type of pesticide
Robinson Ditch	Channel		Larvicide
Robinson Ditch	Channel		Larvicide
Robinson Ditch	Channel		Larvicide
League St. Ditch	Channel		Larvicide
League St. Ditch	Channel		Larvicide
League St. Ditch	Channel		Larvicide
Pasture Ditch	Channel		Larvicide
Pasture Ditch	Channel		Larvicide
Pasture Ditch	Channel		Larvicide
Lakeview Wy Drainage	Channel		Larvicide
Lakeview Wy Drainage	Channel		Larvicide
Lakeview Wy Drainage	Channel		Larvicide
Swale	Open waterway		Larvicide
Swale	Open waterway		Larvicide
Swale	Open waterway		Larvicide
Cole Cr. Meander	Open waterway		Larvicide
Cole Cr. Meander	Open waterway		Larvicide
Cole Cr. Meander	Open waterway		Larvicide
County Park Ditches	Channel		Larvicide
County Park Ditches	Channel		Larvicide
County Park Ditches	Channel		Larvicide
Anderson Springs Cr., Anderson Springs	Open waterway		Adulticide
Anderson Springs Cr., Anderson Springs	Open waterway		Adulticide
Anderson Springs Cr., Anderson Springs	Open waterway		Adulticide
Clear Lake	Lake		Adulticide
Clear Lake	Lake		Adulticide
Clear Lake	Lake		Adulticide
Lyons Cr.	Open waterway		Adulticide
Lyons Cr.	Open waterway		Adulticide
Lyons Cr.	Open waterway		Adulticide
Hidden Valley Lake	Lake		Adulticide
Hidden Valley Lake	Lake		Adulticide
Hidden Valley Lake	Lake		Adulticide
White Ln. drainage	Open waterway		Adulticide
White Ln. drainage	Open waterway		Adulticide
White Ln. drainage	Open waterway		Adulticide
Adobe Cr.	Pond		Adulticide
Adobe Cr.	Pond		Adulticide
Adobe Cr.	Pond		Adulticide
Clear Lake	Lake		Adulticide
Clear Lake	Lake		Adulticide
Clear Lake	Lake		Adulticide



Steele Winery Ponds	Pond	Larvicide
Steele Winery Ponds	Pond	Larvicide
Steele Winery Ponds	Pond	Larvicide
Clear Lake	Channel	Adulticide
Clear Lake	Channel	Adulticide
Clear Lake	Channel	Adulticide
Clear Lake	Lake	Adulticide
Clear Lake	Lake	Adulticide
Clear Lake	Lake	Adulticide
Compton Cr.	Open waterway	Adulticide
Compton Cr.	Open waterway	Adulticide
Compton Cr.	Open waterway	Adulticide
Dr. Lewis' Pond	Pond	Adulticide
Dr. Lewis' Pond	Pond	Adulticide
Dr. Lewis' Pond	Pond	Adulticide
Adobe Cr.	Open waterway	Adulticide
Adobe Cr.	Open waterway	Adulticide
Adobe Cr.	Open waterway	Adulticide
Cole Cr.	Open waterway	Adulticide
Cole Cr.	Open waterway	Adulticide
Cole Cr.	Open waterway	Adulticide
St. Helena Cr.	Open waterway	Adulticide
St. Helena Cr.	Open waterway	Adulticide
St. Helena Cr.	Open waterway	Adulticide
Middle Cr.	Channel	Adulticide
Middle Cr.	Channel	Adulticide
Middle Cr.	Channel	Adulticide
Manning Cr.	Open waterway	Adulticide
Manning Cr.	Open waterway	Adulticide
Manning Cr.	Open waterway	Adulticide
Middle Cr.	Channel	Adulticide
Middle Cr.	Channel	Adulticide
Middle Cr.	Channel	Adulticide
Luchetti Ranch Ditch	Channel	Larvicide
Luchetti Ranch Ditch	Channel	Larvicide
Luchetti Ranch Ditch	Channel	Larvicide
Luchetti Ranch Ditch	Channel	Larvicide
Luchetti Ranch Ditch	Channel	Larvicide
Luchetti Ranch Ditch	Channel	Larvicide
Middle Cr.	Channel	Adulticide
Middle Cr.	Channel	Adulticide
Middle Cr.	Channel	Adulticide
Burns valley Creek	Open waterway	Adulticide
Burns valley Creek	Open waterway	Adulticide
Burns valley Creek	Open waterway	Adulticide
Clear Lake	Lake	Adulticide
Clear Lake	Lake	Adulticide

Clear Lake	Lake	Adulticide
Adobe Cr.	Open waterway	Adulticide
Adobe Cr.	Open waterway	Adulticide
Adobe Cr.	Open waterway	Adulticide
Clear Lake	Lake	Adulticide
Clear Lake	Lake	Adulticide
Clear Lake	Lake	Adulticide
Clear Lake	Lake	Adulticide
Clear Lake	Lake	Adulticide
Clear Lake	Lake	Adulticide
Cole Cr.	Open waterway	Adulticide
Cole Cr.	Open waterway	Adulticide
Cole Cr.	Open waterway	Adulticide
Luchetti Drainage Ditch	Channel	Adulticide
Luchetti Drainage Ditch	Channel	Adulticide
Luchetti Drainage Ditch	Channel	Adulticide
Cache Cr.	Open waterway	Adulticide
Cache Cr.	Open waterway	Adulticide
Cache Cr.	Open waterway	Adulticide
Burns Valley Cr.	Open waterway	Adulticide
Burns Valley Cr.	Open waterway	Adulticide
Burns Valley Cr.	Open waterway	Adulticide
Bucksnort Cr.	Open waterway	Larvicide
Bucksnort Cr.	Open waterway	Larvicide
Bucksnort Cr.	Open waterway	Larvicide
Bucksnort Cr.	Open waterway	Larvicide
Bucksnort Cr.	Open waterway	Larvicide
Bucksnort Cr.	Open waterway	Larvicide
Bucksnort Cr.	Open waterway	Adulticide
Bucksnort Cr.	Open waterway	Adulticide
Bucksnort Cr.	Open waterway	Adulticide
Kelsey Cr.	Open waterway	Adulticide
Kelsey Cr.	Open waterway	Adulticide
Kelsey Cr.	Open waterway	Adulticide
Cache Cr.	Open waterway	Adulticide
Cache Cr.	Open waterway	Adulticide
Cache Cr.	Open waterway	Adulticide
Bucksnort Cr.	Open waterway	Larvicide
Bucksnort Cr.	Open waterway	Larvicide
Bucksnort Cr.	Open waterway	Larvicide
Pasture Ditch	Channel	Larvicide
Pasture Ditch	Channel	Larvicide
Pasture Ditch	Channel	Larvicide
Pasture Ditch	Channel	Larvicide
Pasture Ditch	Channel	Larvicide
Pasture Ditch	Channel	Larvicide
Steele Winery Ponds	Pond	Larvicide

Steele Winery Ponds	Pond	Larvicide
Steele Winery Ponds	Pond	Larvicide
Bucksnot Cr.	Open waterway	Adulticide
Bucksnot Cr.	Open waterway	Adulticide
Bucksnot Cr.	Open waterway	Adulticide
Belchers Pasture, Crazy Cr.	Open waterway	Larvicide
Belchers Pasture, Crazy Cr.	Open waterway	Larvicide
Belchers Pasture, Crazy Cr.	Open waterway	Larvicide
Receding Pond	Pond	Larvicide
Receding Pond	Pond	Larvicide
Receding Pond	Pond	Larvicide
Maple Shadows Spring	Open waterway	Adulticide
Maple Shadows Spring	Open waterway	Adulticide
Maple Shadows Spring	Open waterway	Adulticide
Scotts Vly Rancheria Drainage	Open waterway	Adulticide
Scotts Vly Rancheria Drainage	Open waterway	Adulticide
Scotts Vly Rancheria Drainage	Open waterway	Adulticide
Irwin's Rice	Open waterway	Larvicide
Irwin's Rice	Open waterway	Larvicide
Irwin's Rice	Open waterway	Larvicide
Reclamation Rice	Open waterway	Larvicide
Reclamation Rice	Open waterway	Larvicide
Reclamation Rice	Open waterway	Larvicide
Van Eck Pond	Pond	Adulticide
Van Eck Pond	Pond	Adulticide
Van Eck Pond	Pond	Adulticide
Seasonal Cr	Open waterway	Adulticide
Seasonal Cr	Open waterway	Adulticide
Seasonal Cr	Open waterway	Adulticide
Mountain Spring	Open waterway	Adulticide
Mountain Spring	Open waterway	Adulticide
Mountain Spring	Open waterway	Adulticide
Reclamation Rice	Open waterway	Adulticide
Reclamation Rice	Open waterway	Adulticide
Reclamation Rice	Open waterway	Adulticide
Irwin's Rice	Open waterway	Larvicide
Irwin's Rice	Open waterway	Larvicide
Irwin's Rice	Open waterway	Larvicide
Reclamation Rice	Open waterway	Larvicide
Reclamation Rice	Open waterway	Larvicide
Reclamation Rice	Open waterway	Larvicide
Tule Lake Rice	Open waterway	Larvicide
Tule Lake Rice	Open waterway	Larvicide
Tule Lake Rice	Open waterway	Larvicide
Grahm Pond Rice	Open waterway	Larvicide
Grahm Pond Rice	Open waterway	Larvicide
Grahm Pond Rice	Open waterway	Larvicide

Product Name	MONITORING Information		
	Time of monitoring	Monitoring Date	Time
Vectobac G	Background	03/02/2012	11:45 am
Vectobac G	Event	03/02/2012	12:05 pm
Vectobac G	Post-Event	03/06/2012	10:00 am
Vectobac G	Background	03/02/2012	10:45 am
Vectobac G	Event	03/02/2012	11:30 am
Vectobac G	Post-Event	03/06/2012	10:30 am
Agnique MMF	Background	03/09/2012	11:30 am
Agnique MMF	Event	03/09/2012	12:00 pm
Agnique MMF	Post-Event	03/12/2012	9:30 am
Vectobac G	Background	04/04/2012	10:00 am
Vectobac G	Event	04/05/2012	9:00 am
Vectobac G	Post-Event	04/09/2012	11:00 am
Vectobac G	Background	04/17/2012	9:15 am
Vectobac G	Event	04/17/2012	9:40 am
Vectobac G	Post-Event	04/20/2012	8:35 am
Vectobac G	Background	04/17/2012	10:15 am
Vectobac G	Event	04/17/2012	10:40 am
Vectobac G	Post-Event	04/20/2012	11:00 am
Vectobac G	Background	04/17/2012	10:50 am
Vectobac G	Event	04/17/2012	11:20 am
Vectobac G	Post-Event	04/20/2012	11:20 am
Biomist 4+12	Background	04/30/2012	2:40 pm
Biomist 4+12	Event	05/01/2012	1:00 pm
Biomist 4+12	Post-Event		
Biomist 4+12	Background	04/30/2012	11:05 am
Biomist 4+12	Event	05/01/2012	6:05 am
Biomist 4+12	Post-Event		
Pyrenone Crop Spray	Background	05/02/2012	11:25 am
Pyrenone Crop Spray	Event	05/02/2012	11:42 am
Pyrenone Crop Spray	Post-Event		
Biomist 4+12	Background	05/09/2012	3:00 pm
Biomist 4+12	Event	05/10/2012	1:15 pm
Biomist 4+12	Post-Event		
Pyrenone Crop Spray	Background	05/11/2012	11:00 am
Pyrenone Crop Spray	Event	05/11/2012	11:10 am
Pyrenone Crop Spray	Post-Event		
Pyrenone Crop Spray	Background	05/11/2012	11:35 am
Pyrenone Crop Spray	Event	05/11/2012	11:52 am
Pyrenone Crop Spray	Post-Event		
Pyrenone Crop Spray	Background	05/11/2012	10:15 am
Pyrenone Crop Spray	Event	05/11/2012	10:25 am
Pyrenone Crop Spray	Post-Event		

Agnique MMF	Background	05/14/2012	9:45 am
Agnique MMF	Event	05/14/2012	10:00 am
Agnique MMF	Post-Event	05/18/2012	11:15 am
Biomist 4+12	Background	05/14/2012	2:00 pm
Biomist 4+12	Event	05/15/2012	10:00 am
Biomist 4+12	Post-Event		
Biomist 4+12	Background	05/14/2012	2:30 pm
Biomist 4+12	Event	05/15/2012	9:30 am
Biomist 4+12	Post-Event		
Pyrenone Crop Spray	Background	05/15/2012	9:00 am
Pyrenone Crop Spray	Event	05/15/2012	9:20 am
Pyrenone Crop Spray	Post-Event		
Biomist 4+12	Background	05/16/2012	12:30 pm
Biomist 4+12	Event	05/17/2012	7:30 am
Biomist 4+12	Post-Event		
Biomist 4+12	Background	05/18/2012	2:25 AM
Biomist 4+12	Event	05/18/2012	10:25 am
Biomist 4+12	Post-Event		
Biomist 4+12	Background	05/18/2012	3:00 pm
Biomist 4+12	Event	05/18/2012	11:05 am
Biomist 4+12	Post-Event		
Biomist 4+12	Background	05/21/2012	2:45 pm
Biomist 4+12	Event	05/22/2012	10:00 am
Biomist 4+12	Post-Event		
MGK Pyroicide Mosquito Adulticiding Conc 7396	Background	05/21/2012	2:00 pm
MGK Pyroicide Mosquito Adulticiding Conc 7396	Event	05/22/2012	10:15 am
MGK Pyroicide Mosquito Adulticiding Conc 7396	Post-Event		
Biomist 4+12	Background	05/22/2012	2:32 pm
Biomist 4+12	Event	05/23/2012	6:35 am
Biomist 4+12	Post-Event		
Biomist 4+12	Background	05/24/2012	2:00 pm
Biomist 4+12	Event	05/25/2012	10:00 am
Biomist 4+12	Post-Event		
Agnique MMF G	Background	05/31/2012	9:40 am
Agnique MMF G	Event	06/01/2012	11:30 am
Agnique MMF G	Post-Event	06/06/2012	11:15 am
Altosid Briquettes	Background	05/30/2012	9:40 am
Altosid Briquettes	Event	06/01/2012	11:30 am
Altosid Briquettes	Post-Event		
Biomist 4+12	Background	05/30/2012	1:30 pm
Biomist 4+12	Event	05/31/2012	10:00 am
Biomist 4+12	Post-Event		
Biomist 4+12	Background	05/30/2012	2:30 pm
Biomist 4+12	Event	05/31/2012	10:20 am
Biomist 4+12	Post-Event		
Pyrenone Crop Spray	Background	05/31/2012	10:28 am
Pyrenone Crop Spray	Event	05/31/2012	10:42 am

Pyrenone Crop Spray	Post-Event		
Pyrenone Crop Spray	Background	05/31/2012	9:40 am
Pyrenone Crop Spray	Event	05/31/2012	9:48 am
Pyrenone Crop Spray	Post-Event		
Biomist 4+12	Background	07/12/2012	11:20 am
Biomist 4+12	Event	07/13/2012	6:03 am
Biomist 4+12	Post-Event		
Biomist 4+12	Background	05/31/2012	9:30 am
Biomist 4+12	Event	06/01/2012	7:12 am
Biomist 4+12	Post-Event		
Biomist 4+12	Background	05/31/2012	11:48 am
Biomist 4+12	Event	06/01/2012	6:23 am
Biomist 4+12	Post-Event		
Biomist 4+12	Background	05/31/2012	9:40 am
Biomist 4+12	Event	06/01/2012	11:30 am
Biomist 4+12	Post-Event		
Biomist 4+12	Background	05/31/2012	11:00 am
Biomist 4+12	Event	06/01/2012	9:30 am
Biomist 4+12	Post-Event		
Biomist 4+12	Background	05/31/2012	10:30 am
Biomist 4+12	Event	06/01/2012	9:00 am
Biomist 4+12	Post-Event		
Agnique MMF	Background	06/04/2012	2:45 pm
Agnique MMF	Event	06/05/2012	12:15 pm
Agnique MMF	Post-Event	06/15/2012	11:00 am
Altosid XR Briquettes	Background	06/05/2012	12:20 pm
Altosid XR Briquettes	Event	06/05/2012	1:30 pm
Altosid XR Briquettes	Post-Event		
Pyrenone Crop spray	Background	06/05/2012	11:30 am
Pyrenone Crop spray	Event	06/05/2012	11:50 am
Pyrenone Crop spray	Post-Event		
Biomist 4+12	Background	06/07/2012	2:30 pm
Biomist 4+12	Event	06/08/2012	10:15 am
Biomist 4+12	Post-Event		
Biomist 4+12	Background	06/07/2012	2:00 pm
Biomist 4+12	Event	06/08/2012	9:40 am
Biomist 4+12	Post-Event		
Altosid Pellets	Background	06/15/2012	11:30 am
Altosid Pellets	Event	06/15/2012	12:30 pm
Altosid Pellets	Post-Event	07/16/2012	10:15 am
Altosid Pellets	Background	06/18/2012	11:00 am
Altosid Pellets	Event	06/18/2012	11:20 am
Altosid Pellets	Post-Event		
Agnique MMF	Background	06/19/2012	3:20 pm
Agnique MMF	Event	06/19/2012	3:45
Agnique MMF	Post-Event	06/20/2012	12:00 pm
Agnique MMF	Background	06/21/2012	10:15 am

Agnique MMF	Event	06/21/2012	10:35 am
Agnique MMF	Post-Event	06/28/2012	2:15 pm
Pyrenone Crop spray	Background	06/21/2012	8:45 am
Pyrenone Crop spray	Event	06/21/2012	9:08 am
Pyrenone Crop spray	Post-Event		
MetaLarv	Background	06/29/2012	6:00 am
MetaLarv	Event	06/29/2012	10:00 am
MetaLarv	Post-Event		
Altosid XR Briquettes	Background	07/05/2012	1:25 pm
Altosid XR Briquettes	Event	07/05/2012	1:35 pm
Altosid XR Briquettes	Post-Event		
Biomist 4+12	Background	07/05/2012	3:05 pm
Biomist 4+12	Event	07/06/2012	11:00 am
Biomist 4+12	Post-Event		
Biomist 4+12	Background	07/05/2012	2:35 pm
Biomist 4+12	Event	07/06/2012	5:45 am
Biomist 4+12	Post-Event		
VectoMax CG	Background	07/08/2012	2:31 pm
VectoMax CG	Event	07/09/2012	9:35 am
VectoMax CG	Post-Event	08/05/2012	7:25 pm
VectoMax CG	Background	07/08/2012	2:51 pm
VectoMax CG	Event	07/09/2012	10:03 am
VectoMax CG	Post-Event	08/05/2012	7:38 pm
Biomist 4+12	Background	07/10/2012	3:15 pm
Biomist 4+12	Event	07/11/2012	8:15 am
Biomist 4+12	Post-Event		
Biomist 4+12	Background	07/12/2012	1:47 pm
Biomist 4+12	Event	07/13/2012	11:09 am
Biomist 4+12	Post-Event		
Biomist 4+12	Background	07/12/2012	2:24 pm
Biomist 4+12	Event	07/13/2012	11:24 am
Biomist 4+12	Post-Event		
MGK Pyrocide Mosquito Adulticiding Conc 7396	Background	07/12/2012	2:30 pm
MGK Pyrocide Mosquito Adulticiding Conc 7396	Event	07/13/2012	10:15 am
MGK Pyrocide Mosquito Adulticiding Conc 7396	Post-Event		
VectoMax CG	Background	08/05/2012	7:25 pm
VectoMax CG	Event	08/06/2012	3:36 pm
VectoMax CG	Post-Event	09/06/2012	2:00 pm
VectoMax CG	Background	08/05/2012	7:38 pm
VectoMax CG	Event	08/06/2012	3:16 pm
VectoMax CG	Post-Event	09/06/2012	2:18 pm
VectoMax CG	Background	08/05/2012	8:05 pm
VectoMax CG	Event	08/06/2012	4:03 pm
VectoMax CG	Post-Event	09/06/2012	2:35 pm
VectoMax CG	Background	08/05/2012	8:12 pm
VectoMax CG	Event	08/06/2012	4:18 pm
VectoMax CG	Post-Event	09/06/2012	2:42 pm





Terry Sanderson	Clear/sunny	None	Calm	Cool
Terry Sanderson	Partly cloudy	None	Calm	Cool
Terry Sanderson	Clear/sunny	None	Calm	Warm/mild
Brad Hayes	Clear/sunny	None	Light breeze	Warm/mild
Brad Hayes	Clear/sunny	None	Light breeze	Warm/mild
Porter Anderson	Partly cloudy	None	Calm	Warm/mild
Porter Anderson	Clear/sunny	None	Calm	Warm/mild
Terry Sanderson	Clear/sunny	None	Calm	Cool
Terry Sanderson	Clear/sunny	None	Calm	Cool
Terry Sanderson	Clear/sunny	None	Calm	Warm/mild
Terry Sanderson	Overcast	None	Calm	Cool
Terry Sanderson	Clear/sunny	None	Calm	Cool
Terry Sanderson	Clear/sunny	None	Calm	Warm/mild
Terry Sanderson	Clear/sunny	None	Calm	Cool
Terry Sanderson	Clear/sunny	None	Calm	Warm/mild
Sandi Courcier	Hazy	None	Gusty	Warm/mild
Sandi Courcier	Clear/sunny	None	Gusty	Cool
Brad Hayes	Clear/sunny	None	Light breeze	Warm/mild
Brad Hayes	Clear/sunny	None	Light breeze	Warm/mild
Terry Sanderson	Clear/sunny	None	Gusty	Warm/mild
Terry Sanderson	Clear/sunny	None	Gusty	Cool
Brad Hayes	Clear/sunny	None	Gusty	Warm/mild
Brad Hayes	Clear/sunny	None	Gusty	Warm/mild
Terry Sanderson	Clear/sunny	None	Calm	Warm/mild
Sandi Courcier	Clear/sunny	None	Calm	Hot
Sandi Courcier	Clear/sunny	None	Light breeze	Cool
Sandi Courcier	Clear/sunny	None	Calm	Warm/mild
Sandi Courcier	Clear/sunny	None	Calm	Hot
Brad Hayes	Clear/sunny	None	Calm	Hot
Brad Hayes	Clear/sunny	None	Calm	Warm/mild
Porter Anderson	Clear/sunny	None	Light breeze	Warm/mild
Porter Anderson	Clear/sunny	None	Calm	Warm/mild
Terry Sanderson	Clear/sunny	None	Calm	Warm/mild
Terry Sanderson	Clear/sunny	None	Calm	Warm/mild

Terry Sanderson	Clear/sunny	None	Calm	Warm/mild
Terry Sanderson	Clear/sunny	None	Calm	Warm/mild
Terry Sanderson	Clear/sunny	None	Calm	Warm/mild
Terry Sanderson	Clear/sunny	None	Calm	Cool
Terry Sanderson	Clear/sunny	None	Calm	Warm/mild
Terry Sanderson	Clear/sunny	None	Calm	Cool
Terry Sanderson	Clear/sunny	None	Calm	Warm/mild
Terry Sanderson	Clear/sunny	None	Calm	Cool
Sandi Courcier	Clear/sunny	None	Calm	Warm/mild
Sandi Courcier	Clear/sunny	None	Calm	Hot
Porter Anderson	Partly cloudy	None	Calm	Warm/mild
Porter Anderson	Clear/sunny	None	Light breeze	Warm/mild
Porter Anderson	Clear/sunny	None	Calm	Warm/mild
Porter Anderson	Clear/sunny	None	Light breeze	Warm/mild
Sandi Courcier	Partly cloudy	Intermittent showers	Gusty	Warm/mild
Sandi Courcier	Partly cloudy	None	Light breeze	Warm/mild
Sandi Courcier	Clear/sunny	None	Calm	Hot
Sandi Courcier	Partly cloudy	None	Light breeze	Warm/mild
Sandi Courcier	Partly cloudy	None	Light breeze	Warm/mild
Sandi Courcier	Partly cloudy	None	Light breeze	Warm/mild
Sandi Courcier	Partly cloudy	None	Light breeze	Warm/mild
Sandi Courcier	Partly cloudy	None	Light breeze	Warm/mild
Sandi Courcier	Clear/sunny	None	Calm	Warm/mild
Sandi Courcier	Clear/sunny	None	Light breeze	Cool
Porter Anderson	Partly cloudy	None	Gusty	Warm/mild
Porter Anderson	Clear/sunny	None	Light breeze	Warm/mild
Sandi Courcier	Clear/sunny	None	Calm	Hot
Sandi Courcier	Clear/sunny	None	Calm	Hot
Sandi Courcier	Clear/sunny	None	Calm	Warm/mild
Brad Hayes	Clear/sunny	None	Light breeze	Warm/mild
Brad Hayes	Clear/sunny	None	Light breeze	Warm/mild
Brad Hayes	Clear/sunny	None	Calm	Hot
Brad Hayes	Clear/sunny	None	Calm	Hot
Brad Hayes	Clear/sunny	None	Calm	Hot
Terry Sanderson	Clear/sunny	None	Light breeze	Warm/mild

Terry Sanderson	Clear/sunny	None	Light breeze	Warm/mild
Terry Sanderson	Clear/sunny	None	Calm	Warm/mild
Sandi Courcier	Clear/sunny	None	Calm	Cool
Sandi Courcier	Clear/sunny	None	Calm	Cool
Sandi Courcier	Clear/sunny	None	Calm	Cool
Sandi Courcier	Clear/sunny	None	Calm	Warm/mild
Sandi Courcier	Clear/sunny	None	Calm	Hot
Sandi Courcier	Clear/sunny	None	Calm	Hot
Sandi Courcier	Clear/sunny	None	Calm	Warm/mild
Sandi Courcier	Clear/sunny	None	Calm	Cool
Terry Sanderson	Clear/sunny	None	Light breeze	Hot
Terry Sanderson	Clear/sunny	None	Calm	Cool
Terry Sanderson	Clear/sunny	None	Light breeze	Warm/mild
Terry Sanderson	Partly cloudy	None	Calm	Warm/mild
Terry Sanderson	Clear/sunny	None	Calm	Warm/mild
Terry Sanderson	Clear/sunny	None	Light breeze	Warm/mild
Terry Sanderson	Clear/sunny	None	Calm	Warm/mild
Terry Sanderson	Clear/sunny	None	Calm	Warm/mild
Terry Sanderson	Clear/sunny	None	Calm	Hot
Terry Sanderson	Clear/sunny	None	Calm	Cool
Sandi Courcier	Clear/sunny	None	Calm	Hot
Sandi Courcier	Clear/sunny	None	Calm	Warm/mild
Sandi Courcier	Clear/sunny	None	Calm	Hot
Sandi Courcier	Clear/sunny	None	Calm	Warm/mild
Brad Hayes	Hazy	None	Calm	Hot
Brad Hayes	Hazy	None	Calm	Cool
Terry Sanderson	Clear/sunny	None	Calm	Warm/mild
Terry Sanderson	Clear/sunny	None	Light breeze	Hot
Terry Sanderson	Clear/sunny	None	Light breeze	Hot
Terry Sanderson	Clear/sunny	None	Calm	Warm/mild
Terry Sanderson	Clear/sunny	None	Light breeze	Hot
Terry Sanderson	Clear/sunny	None	Calm	Hot
Terry Sanderson	Clear/sunny	None	Calm	Warm/mild
Terry Sanderson	Clear/sunny	None	Light breeze	Hot
Terry Sanderson	Clear/sunny	None	Calm	Hot
Terry Sanderson	Clear/sunny	None	Calm	Warm/mild
Terry Sanderson	Clear/sunny	None	Gusty	Hot
Terry Sanderson	Clear/sunny	None	Light breeze	Hot

## Monitoring of Treated WOTUS for Lake Co., CA

Visual Observations				
Water Color	Water Clarity	Floating/Suspended Matter	Bottom Deposits	Aquatic Life
Brown	Clear	Observed	Observed	Observed
Brown	Clear	Observed	Observed	Observed
Brown	Clear	Observed	Observed	Observed
Colorless	Clear	Observed	Observed	Observed
Colorless	Clear	Observed	Observed	Observed
Brown	Clear	Observed	Observed	Observed
Colorless	Clear	Observed	Observed	Observed
Colorless	Clear	Observed	Observed	Observed
Colorless	Clear	Observed	Observed	Observed
Brown	Cloudy	Observed	Observed	Observed
Brown	Clear	Observed	Observed	Observed
Brown	Clear	Observed	Observed	Observed
Brown	Cloudy	Observed	Observed	Observed
Brown	Cloudy	Observed	Observed	Observed
Brown	Cloudy	Observed	Observed	Observed
Brown	Clear	Observed	Observed	Observed
Brown	Clear	Observed	Observed	Observed
Brown	Clear	Observed	Observed	Observed
Brown	Clear	Observed	Observed	Observed
Brown	Clear	Observed	Observed	Observed
Brown	Clear	Observed	Observed	Observed
Brown	Clear	Observed	Observed	Observed
Brown	Clear	Observed	Observed	Observed
Colorless	Clear	Not Observed	Observed	Observed
Colorless	Clear	Not Observed	Observed	Observed
		Not Observed	Not Observed	Not Observed
Green	Clear	Observed	Observed	Observed
Green	Clear	Observed	Observed	Observed
		Not Observed	Not Observed	Not Observed
Green	Murky	Observed	Observed	Observed
Green	Murky	Observed	Observed	Observed
		Not Observed	Not Observed	Not Observed
Colorless	Clear	Observed	Observed	Observed
Colorless	Clear	Observed	Observed	Observed
		Not Observed	Not Observed	Not Observed
Dry		Not Observed	Not Observed	Not Observed
dry		Not Observed	Not Observed	Not Observed
		Not Observed	Not Observed	Not Observed
Green	Clear	Observed	Observed	Observed
Green	Clear	Observed	Observed	Observed
		Not Observed	Not Observed	Not Observed
Green	Clear	Observed	Observed	Observed
Green	Clear	Observed	Observed	Observed
		Not Observed	Not Observed	Not Observed

Brown	Murky	Observed	Observed	Observed
Brown	Murky	Observed	Observed	Observed
Green	Murky	Observed	Observed	Observed
Colorless	Murky	Observed	Not Observed	Not Observed
Colorless	Murky	Observed	Not Observed	Not Observed
		Not Observed	Not Observed	Not Observed
Colorless	Clear	Observed	Not Observed	Observed
Colorless	Clear	Not Observed	Not Observed	Observed
		Not Observed	Not Observed	Not Observed
Green	Clear	Observed	Observed	Observed
Green	Clear	Observed	Observed	Observed
		Not Observed	Not Observed	Not Observed
Colorless	Clear	Observed	Observed	Observed
Colorless	Clear	Observed	Observed	Observed
		Not Observed	Not Observed	Not Observed
Colorless	Clear	Observed	Observed	Observed
Colorless	Clear	Observed	Observed	Observed
		Not Observed	Not Observed	Not Observed
Brown	Clear	Observed	Observed	Observed
Brown	Clear	Observed	Observed	Observed
		Not Observed	Not Observed	Not Observed
Colorless	Clear	Observed	Observed	Observed
Colorless	Clear	Observed	Observed	Observed
		Not Observed	Not Observed	Not Observed
Brown	Murky	Observed	Not Observed	Observed
Brown	Murky	Observed	Not Observed	Observed
		Not Observed	Not Observed	Not Observed
Colorless	Clear	Observed	Observed	Observed
Colorless	Clear	Observed	Observed	Observed
		Not Observed	Not Observed	Not Observed
Colorless	Clear	Observed	Observed	Observed
Colorless	Clear	Observed	Observed	Observed
		Not Observed	Not Observed	Not Observed
Brown	Cloudy	Observed	Observed	Observed
Brown	Cloudy	Observed	Observed	Observed
Brown	Murky	Observed	Observed	Observed
Brown	Cloudy	Observed	Observed	Observed
Brown	Cloudy	Observed	Observed	Observed
		Not Observed	Not Observed	Not Observed
Colorless	Clear	Observed	Observed	Observed
Colorless	Clear	Observed	Observed	Observed
		Not Observed	Not Observed	Not Observed
Green	Cloudy	Observed	Not Observed	Observed
Green	Cloudy	Observed	Not Observed	Observed
		Not Observed	Not Observed	Not Observed
Green	Clear	Observed	Observed	Observed
Green	Clear	Observed	Observed	Observed

		Not Observed	Not Observed	Not Observed
Colorless	Clear	Observed	Observed	Observed
Colorless	Clear	Observed	Observed	Observed
		Not Observed	Not Observed	Not Observed
Green	Clear	Observed	Observed	Observed
Green	Clear	Observed	Observed	Observed
		Not Observed	Not Observed	Not Observed
Green	Clear	Observed	Observed	Observed
Green	Clear	Observed	Observed	Observed
		Not Observed	Not Observed	Not Observed
Colorless	Clear	Not Observed	Observed	Observed
Colorless	Clear	Not Observed	Observed	Observed
		Not Observed	Not Observed	Not Observed
Brown	Cloudy	Observed	Observed	Observed
Brown	Cloudy	Observed	Observed	Observed
		Not Observed	Not Observed	Not Observed
Colorless	Clear	Observed	Not Observed	Observed
Colorless	Clear	Observed	Not Observed	Observed
		Not Observed	Not Observed	Not Observed
Dry		Not Observed	Not Observed	Not Observed
Dry		Not Observed	Not Observed	Not Observed
		Not Observed	Not Observed	Not Observed
Brown	Murky	Observed	Observed	Observed
Brown	Murky	Observed	Observed	Observed
Dry		Not Observed	Not Observed	Not Observed
Brown	Murky	Observed	Observed	Observed
Brown	Murky	Observed	Observed	Observed
		Not Observed	Not Observed	Not Observed
Brown	Murky	Observed	Observed	Observed
Brown	Murky	Observed	Observed	Observed
		Not Observed	Not Observed	Not Observed
Colorless	Clear	Observed	Observed	Observed
Colorless	Clear	Observed	Observed	Observed
		Not Observed	Not Observed	Not Observed
Green	Cloudy	Observed	Not Observed	Observed
Green	Cloudy	Observed	Not Observed	Observed
		Not Observed	Not Observed	Not Observed
Brown	Cloudy	Observed	Observed	Observed
Brown	Cloudy	Observed	Observed	Observed
Brown	Cloudy	Observed	Observed	Observed
Brown	Cloudy	Observed	Observed	Observed
Brown	Cloudy	Observed	Observed	Observed
		Not Observed	Not Observed	Not Observed
Brown	Murky	Observed	Observed	Observed
Brown	Murky	Observed	Observed	Observed
Brown	Murky	Observed	Observed	Observed
Green	Murky	Observed	Observed	Observed

Green	Murky	Observed	Observed	Observed
Green	Murky	Observed	Observed	Observed
Brown	Cloudy	Observed	Observed	Observed
Brown	Cloudy	Observed	Observed	Observed
		Not Observed	Not Observed	Not Observed
Dry		Not Observed	Not Observed	Not Observed
Dry		Not Observed	Not Observed	Not Observed
Brown	Cloudy	Observed	Observed	Observed
Brown	Cloudy	Observed	Observed	Observed
Colorless	Clear	Not Observed	Observed	Observed
Colorless	Clear	Not Observed	Observed	Observed
		Not Observed	Not Observed	Not Observed
Dry		Not Observed	Not Observed	Not Observed
Dry		Not Observed	Not Observed	Not Observed
		Not Observed	Not Observed	Not Observed
Green	Clear	Observed	Observed	Observed
Green	Clear	Observed	Observed	Observed
Colorless	Clear	Observed	Observed	Observed
Green	Clear	Observed	Observed	Observed
Green	Clear	Observed	Observed	Observed
Brown	Cloudy	Observed	Observed	Observed
		Not Observed	Not Observed	Not Observed
		Not Observed	Not Observed	Not Observed
		Not Observed	Not Observed	Not Observed
		Not Observed	Not Observed	Not Observed
		Not Observed	Not Observed	Not Observed
		Not Observed	Not Observed	Not Observed
Colorless	Clear	Observed	Observed	Observed
Colorless	Clear	Observed	Observed	Observed
		Not Observed	Not Observed	Not Observed
Green	Clear	Observed	Observed	Observed
Green	Clear	Observed	Observed	Observed
		Not Observed	Not Observed	Not Observed
Colorless	Clear	Observed	Observed	Observed
Colorless	Clear	Observed	Observed	Observed
Brown	Cloudy	Observed	Observed	Observed
Brown	Cloudy	Observed	Observed	Observed
Brown	Cloudy	Observed	Observed	Observed
Dry		Not Observed	Not Observed	Not Observed
Green	Cloudy	Observed	Observed	Observed
Green	Cloudy	Observed	Observed	Observed
Dry		Not Observed	Not Observed	Not Observed
Colorless	Cloudy	Observed	Observed	Observed
Colorless	Cloudy	Observed	Observed	Observed
Brown	Cloudy	Observed	Observed	Observed







	Not Observed	None
Films	Not Observed	None
Films	Not Observed	None
	Not Observed	None
	Not Observed	None
	Not Observed	None
	Not Observed	None
	Not Observed	None
	Not Observed	None
	Not Observed	None
	Not Observed	None
Films	Not Observed	None
	Not Observed	None
Sheen	Not Observed	None
Sheen	Not Observed	None
	Not Observed	None
	Not Observed	None
	Not Observed	None
	Not Observed	None
	Not Observed	None
	Not Observed	None
	Not Observed	None
	Not Observed	None
	Not Observed	None
	Not Observed	None
	Not Observed	None
	Not Observed	None
	Not Observed	None
	Not Observed	None
	Not Observed	None
	Not Observed	None
	Not Observed	None
	Not Observed	None
	Not Observed	None
	Not Observed	None
	Not Observed	None
	Not Observed	None
	Not Observed	None
Films	Not Observed	Rotting Grape Waste and Algae







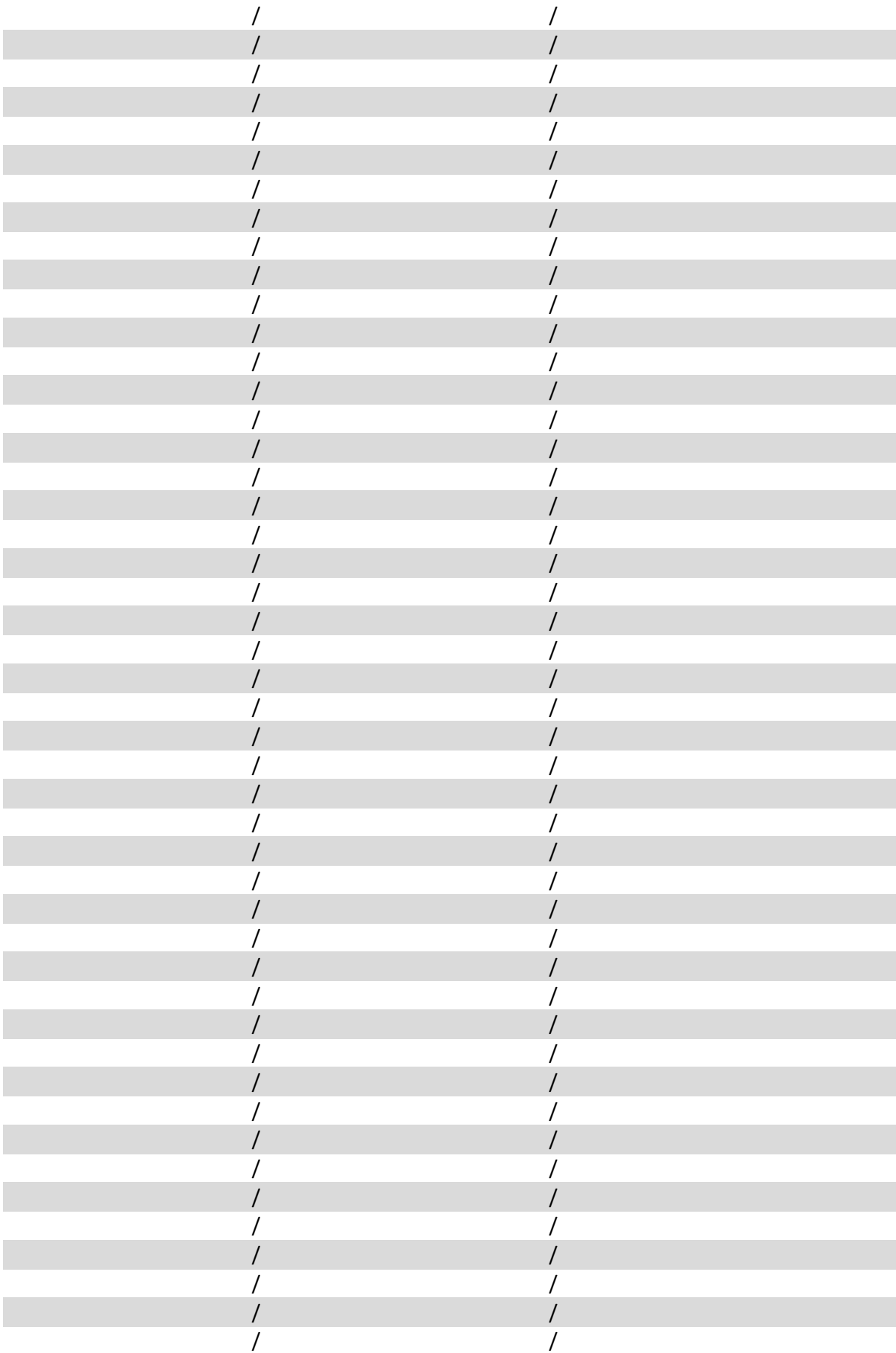


Field Inst./	/
Field Inst./	/
Field Inst./	/
Field Inst./	/
Field Inst./	/
Field Inst./	/
Field Inst./	/
Field Inst./	/
Field Inst./	/
Field Inst./	/
Field Inst./	/
Field Inst./	/
Field Inst./	/
Field Inst./	/
Field Inst./	/
Field Inst./	/
Field Inst./	/
Field Inst./	/
Field Inst./	/
73.22 Field Inst./YSI 556 MPS	0.365 Field Inst./YSI 556 MPS
66.18 Field Inst./YSI 556 MPS	0.359 Field Inst./YSI 556 MPS
74.17 Field Inst./YSI 556 MPS	0.369 Field Inst./YSI 556 MPS
72.17 Field Inst./YSI 556 MPS	0.517 Field Inst./YSI 556 MPS
66.95 Field Inst./YSI 556 MPS	0.504 Field Inst./YSI 556 MPS
71.78 Field Inst./YSI 556 MPS	0.493 Field Inst./YSI 556 MPS
Field Inst./	/
Field Inst./	/
Field Inst./	/
Field Inst./	/
Field Inst./	/
Field Inst./	/
Field Inst./	/
Field Inst./	/
Field Inst./	/
Field Inst./	/
Field Inst./	/
74.17 Field Inst./YSI 556 MPS	0.369 Field Inst./YSI 556 MPS
70.23 Field Inst./YSI 556 MPS	0.368 Field Inst./YSI 556 MPS
64.32 Field Inst./YSI 556 MPS	1.42 Field Inst./YSI 556 MPS
71.78 Field Inst./YSI 556 MPS	0.493 Field Inst./YSI 556 MPS
71.33 Field Inst./YSI 556 MPS	0.48 Field Inst./YSI 556 MPS
Field Inst./YSI 556 MPS	Field Inst./YSI 556 MPS
72.01 Field Inst./YSI 556 MPS	0.442 Field Inst./YSI 556 MPS
71.33 Field Inst./YSI 556 MPS	0.447 Field Inst./YSI 556 MPS
Field Inst./YSI 556 MPS	Field Inst./YSI 556 MPS
69.93 Field Inst./YSI 556 MPS	0.796 Field Inst./YSI 556 MPS
65.89 Field Inst./YSI 556 MPS	0.782 Field Inst./YSI 556 MPS
75.61 Field Inst./YSI 556 MPS	1.013 Field Inst./YSI 556 MPS









/	/			
/	/			
/	/			
/	/			
/	/			
/	/			
/	/			
/	/			
/	/			
/	/			
/	/			
/	/			
/	/			
/	/			
22.8	Field Inst./YSI 556 MPS	7.58	Field Inst./YSI 556 MPS	1.79
22.8	Field Inst./YSI 556 MPS	7.22	Field Inst./YSI 556 MPS	1.72
28.5	Field Inst./YSI 556 MPS	7	Field Inst./YSI 556 MPS	1.32
40.6	Field Inst./YSI 556 MPS	7.37	Field Inst./YSI 556 MPS	0.71
31.8	Field Inst./YSI 556 MPS	7.17	Field Inst./YSI 556 MPS	0.69
23.3	Field Inst./YSI 556 MPS	7.22	Field Inst./YSI 556 MPS	26.2
/	/	/	/	
/	/	/	/	
/	/	/	/	
/	/	/	/	
/	/	/	/	
/	/	/	/	
/	/	/	/	
/	/	/	/	
/	/	/	/	
/	/	/	/	
28.5	Field Inst./YSI 556 MPS	7	Field Inst./YSI 556 MPS	1.32
13.4	Field Inst./YSI 556 MPS	7.07	Field Inst./YSI 556 MPS	2.19
4.3	Field Inst./YSI 556 MPS	7.57	Field Inst./YSI 556 MPS	84.2
23.3	Field Inst./YSI 556 MPS	7.22	Field Inst./YSI 556 MPS	26.2
45.1	Field Inst./YSI 556 MPS	7.24	Field Inst./YSI 556 MPS	6.2
	Field Inst./YSI 556 MPS		Field Inst./YSI 556 MPS	
23	Field Inst./YSI 556 MPS	7.04	Field Inst./YSI 556 MPS	8.99
19.5	Field Inst./YSI 556 MPS	7	Field Inst./YSI 556 MPS	9.71
	Field Inst./YSI 556 MPS		Field Inst./YSI 556 MPS	
26.8	Field Inst./YSI 556 MPS	6.97	Field Inst./YSI 556 MPS	3.73
21.8	Field Inst./YSI 556 MPS	6.89	Field Inst./YSI 556 MPS	2.31
7.8	Field Inst./YSI 556 MPS	7.28	Field Inst./YSI 556 MPS	19.8







