

1. Annual Report

a. Executive Summary

Santa Cruz County Mosquito and Vector Control (hereafter, SCCMVC) is a dependant county service area responsible for the control and surveillance of arthropod transmitted disease within the boundaries of Santa Cruz County. The SCCMVC complied with the applicable components the Statewide National Pollutant Discharge Elimination System (NPDES) Permit for Biological and Residual Pesticide Discharges to Waters of the United States from Vector Control Application (General Permit) since it became effective on November 1, 2011.

The SCCMVC is a member of the MVCAC NPDES Permit Coalition and the Coalition conducted all required chemical and physical monitoring. The results of the Coalition's monitoring will be included in the Coalition Annual Report that will be sent separately to the SWRCB and Regional Boards.

The SCCMVC made 381 applications of larvicide to Waters of the United States from Jan-01-2012 to July-13-2012. The log of these applications can be found in Attachment B. SCCMVC performed Visual Monitoring on >10% of individual application sites identified as "Waters of the US" until July 13, 2012. The visual monitoring completed by the District in the first half of the year found that there is no observable change in water quality between the background, event, and post event time periods-see monitoring log sheets. The SWRCB notified the permit holders in a letter to MVCAC dated July 13, 2012 that because the visual monitoring requirements were "interfering with the need for maximal efficient application to adequately protect human health from vector-borne diseases like West Nile Virus," that the visual monitoring was no longer required by individual Districts. The District continued to follow the guidelines of its Pesticide Application Plan (PAP).

b. Summary of Monitoring Data

The SCCMVC began the year by complying with the visual monitoring requirements of the permit. See Footnote 1 of Tables C-1 and C-2 in Amended Water Quality Control Order No. 2011-0002-DWQ, General Permit No. CAG990004. These requirements required a tremendous amount of time to monitor including a number of revisits to specific sites to gather the necessary information. Most critically, time spent revisiting old sites caused delay in getting to new sites. Given the short lifecycle of the mosquito, this greatly exacerbated the task of looking for and treating mosquito breeding sites early in their lifecycle when treatment is more concentrated and effective. Recognizing the need of mosquito control districts to quickly find and

treat mosquito breeding sites to prevent the spread of disease, such as West Nile virus, the SWRCB issued a letter to MVCAC dated July 13, 2012 that indicated the visual monitoring requirement would no longer be required of individual Districts.

Per the instructions in the letter, the Coalition will provide information on the incidence of West Nile Virus and other similar public health threats in the Coalition's annual report. For the reasons stated above, the SCCMVC will no longer be collecting visual monitoring data.

c. BMP Identification

The SCCMVC uses the BMP's outlined in the SCCMVC's PAP. These include but are not limited to; reduction of mosquito breeding habitat through non- chemical means; prevention of spills and applying appropriate amount of chemical in each treatment area; calibration of spray equipment; use a biology based assessment for determining treatment thresholds; maintaining certification of staff as State Certified Public Health Vector Control Technicians.

d. Violation Discussion

No violations of the General Permit by the SCCMVC were observed.

e. Map of Applications

See Attachment A

f. Log of Applications made to Waters of the U.S.

See attachment B

g. General Information on Applications

Attachment B includes information on location, acreage of treatment, dosage, concentration and quantity of each pesticide used which are derived from the individual pesticide labels.

h. Visual Monitoring Data

Visual Monitoring Data has been submitted to the State Water Board in the provided Monitoring Database Form – Attachment C.

i. BMP, PAP, Monitoring Program Recommendations

No recommendations are being proposed to improve the current BMP's, PAP, or monitoring plan. Any changes to the Coalition Monitoring Plan will be highlighted in the Coalition Monitoring Annual Report.

j. Pesticide Application Log made to Waters of the U.S.

A representation of the pesticide application log is contained in Attachment B

2. Updated PAP Components

N/A

3. Self Monitoring Reports

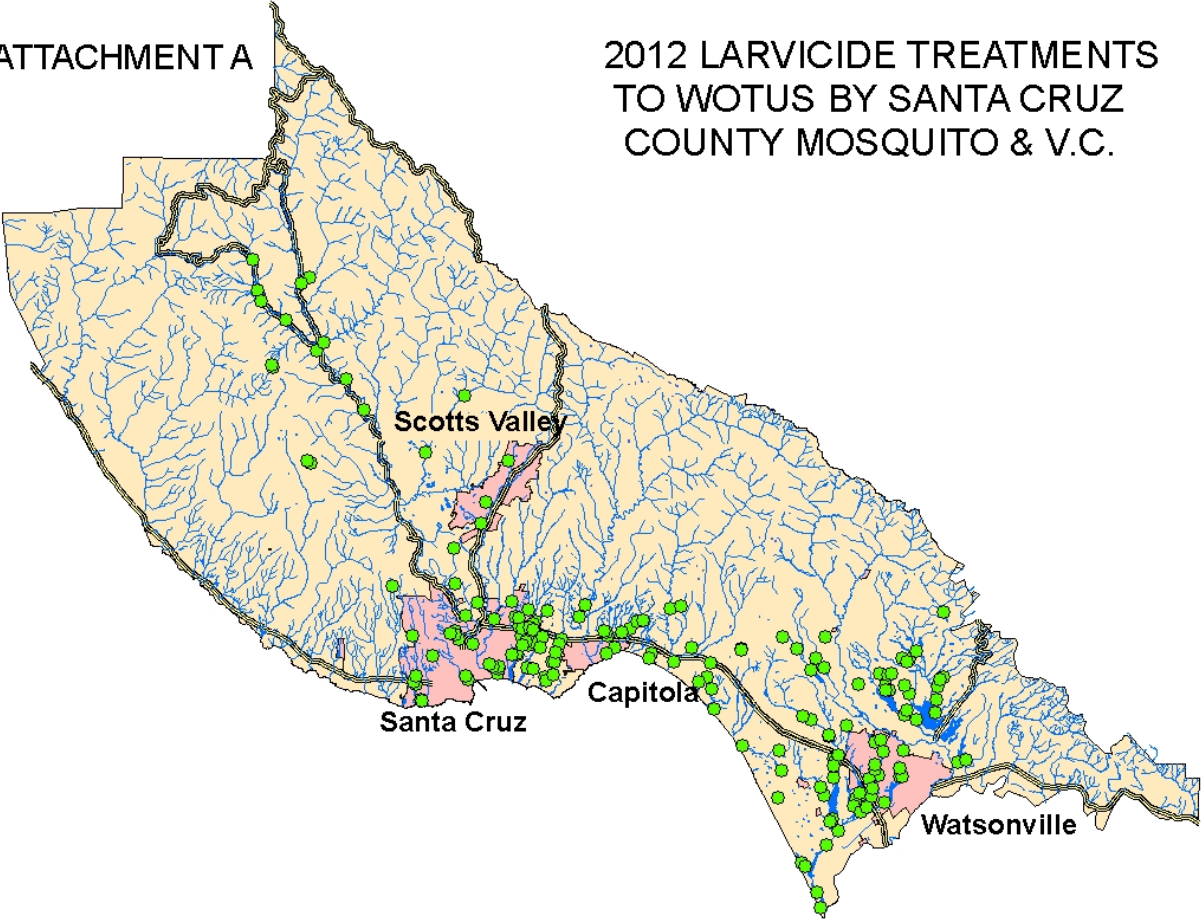
N/A

4. Monitoring Reports

The SCCMVC is a member of the MVCAC Monitoring and Reporting Coalition. The MVCAC Coalition is responsible for the physical and chemical monitoring requirements of the Vector Control permit. The Coalition Monitoring Annual Report will summarize all physical measurements and chemical monitoring done for 2011 and 2012.

ATTACHMENT A

**2012 LARVICIDE TREATMENTS
TO WOTUS BY SANTA CRUZ
COUNTY MOSQUITO & V.C.**



ATTACHMENT B - LOG OF APPLICATIONS TO WOTUS BY SANTA CRUZ COUNTY MOSQUITO AND VECTOR CONTROL (Jan-01-2012 to July-13-2012)

Count	DATE	OPERATOR	ACTION	MATERIAL	Active Ingredient	F2AREA_TRE	AMOUNT	LAT_DD	LON_DD	DESCRIPTION
1	1/3/2012	Nader Sidhom	LA	Zoecon Altosid Pellets	Methoprene	10	0.002	37.1366	-122.1430	BROOK LN DITCH
2	1/4/2012	Melanie Benedetti	LA	Abbot Labs Vectobac Granule	BTI	520	0.23	36.9900	-121.9886	ARANA CREEK TRIB. @ BROOKWOOD DR.
3	1/5/2012	Ray Travers	LA	Aquabac (200 G)	BTI	6721	2.75	36.9868	-121.9349	DRAINAGE E. OF PARK AVE. (N. OF HWY1)
4	1/5/2012	Ray Travers	LA	Aquabac (200 G)	BTI	152	0.076	36.9939	-121.9608	SOQUEL HIGH SCHOOL BASEBALL FIELD DRAINAGE
5	1/5/2012	Nader Sidhom	LA	Zoecon Altosid Pellets	Methoprene	1	0.0002	37.1257	-122.1191	SLR @ LOMOND ST (BOULDER CK CITY)
6	1/5/2012	Melanie Benedetti	LA	Abbot Labs Vectobac Granule	BTI	250	0.1	36.9997	-122.0230	PEACHWOOD (PASATIEMPO)-NW DITCH
7	1/5/2012	Melanie Benedetti	LA	Zoecon Altosid Pellets (Water Soluble Pouch)	Methoprene	135	0.015	36.9887	-121.9950	HOLWAY DR./ MORRISSEY BLVD. DRAINAGE
8	1/5/2012	Steve Driscoll	LA	Abbot Labs Vectobac Granule	BTI	300	0.1	36.9858	-121.8110	70 ALDRIDGE LANE DITCH
9	1/6/2012	Ray Travers	LA	Clarke Co. Golden Bear 1111	PD	300	0.024	36.9827	-121.9715	RODEO GULCH POND @ KRAFT AUTO BODY (6100
10	1/10/2012	Ray Travers	LA	Aquabac (200 G)	BTI	6110	2.5	36.9967	-121.9804	ARANA GULCH TRIB. @ PAUL SWEET &

11	1/11/2012	Melanie Benedetti	LA	Abbot Labs Vectobac Granule	BTI	25	0.009	36.9935	-122.0298	1969-2060 OCEAN ST. EXT.- E.DITCH
12	1/12/2012	Nader Sidhom	LA	Natular Granule	Spinosad	14200	6.25	36.9608	-122.0608	MOORE CREEK - BTW HWY 1 & MISSION ST.
13	1/12/2012	Melanie Benedetti	LA	Abbot Labs Vectobac Granule	BTI	220	0.083	36.9855	-122.6835	UCSC BMP ON EMPIRE GRADE
14	1/12/2012	Melanie Benedetti	LA	Abbot Labs Vectobac Granule	BTI	110	0.03	36.9595	-122.0598	MOORE CREEK- BTW MISSION ST. & ANTONELLI'S POND
15	1/12/2012	Melanie Benedetti	LA	Abbot Labs Vectobac Granule	BTI	350	0.15	36.9637	-122.0599	MOORE CREEK- N OF HWY 1
16	1/12/2012	Jacob Jones	LA	Natular Granule	Spinosad	3000	0.6	36.8839	-121.8086	WATSONVILLE SLOUGH S SAN ANDREAS RD
17	1/17/2012	Steve Driscoll	LA	VectoMax Coated Granule	BTI+BS	800	0.3	36.9988	-121.7391	HAZEL DELL RD DITCH OPP SIMAS LAKE
18	1/18/2012	Melanie Benedetti	LA	Abbot Labs Vectobac Granule	BTI	225	0.096	36.9655	-122.0096	SOUTH PILKINGTON CK (ON BROOK LN S OF RR)
19	1/19/2012	Ray Travers	LA	Abbot Labs Vectobac Granule	BTI	4888	2	36.9870	-121.9891	HARBOR HIGH POND E. OF TENNIS COURTS
20	1/19/2012	Jacob Jones	LA	Abbot Labs Vectobac Granule	BTI	2178	0.5	36.8910	-121.8015	WATSONVILLE SLOUGH N SAN ANDREAS RD
21	1/24/2012	Ray Travers	LA	Aquabac (200 G)	BTI	1222	0.5	36.9794	-121.9950	ARANA CK TRIB/ MARSH BEHIND OFFICE
22	1/24/2012	Steve Driscoll	LA	Agnique Monomolecular Film	MMF	250	0.004	36.9854	-121.8368	CABRILLO SAND & GRAVEL PONDS

23	1/24/2012	Jacob Jones	LA	Natular Granule	Spinosad	14500	3	36.8957	-121.8066	HARKINS SL. S. OF R.R. W OF CHANNEL
24	1/24/2012	Jacob Jones	LA	Natular Granule	Spinosad	9680	2	36.8958	-121.8055	HARKINS SLOUGH S OF RR E OF CHANNEL
25	1/24/2012	Jacob Jones	LA	Natular Granule	Spinosad	9700	2	36.8970	-121.8050	CHANNEL S HARKINS SLOUGH
26	1/25/2012	Ray Travers	LA	Aquabac (200 G)	BTI	500	0.19	36.9815	-121.9892	POLO GROUNDS PARK OFF 2255 HUNTINGTON DR.
27	1/25/2012	Melanie Benedetti	LA	Abbot Labs Vectobac Granule	BTI	1300	0.46	36.9703	-122.0150	JESSIE MARSH
28	1/25/2012	Jacob Jones	LA	Natular Granule	Spinosad	3380	0.7	36.8537	-121.8111	PAJARO DUNES SUMP & PUMP STATION
29	2/1/2012	Ray Travers	LA	Aquabac (200 G)	BTI	4888	2	36.9883	-121.9298	ATHERTON DR POND
30	2/2/2012	Ray Travers	LA	Zeocon Altosid Single Brood Granule	Methoprene	7332	3	36.9766	-121.9747	RODEO GULCH BTW COFFEY LN/CAPITOLA RD
31	2/3/2012	Ray Travers	LA	Zeocon Altosid Single Brood Granule	Methoprene	24444	10	36.9870	-121.9891	HARBOR HIGH POND E. OF TENNIS COURTS
32	2/7/2012	Melanie Benedetti	LA	Abbot Labs Vectobac Granule	BTI	25	0.009	36.9887	-121.9950	HOLWAY DR./ MORRISSEY BLVD. DRAINAGE
33	2/8/2012	Nader Sidhom	LA	Abbot Labs Vectobac Granule	BTI	300	0.1	37.1012	-122.0327	Zayante 0.3 miles past Westwood Rd.
34	2/8/2012	Nader Sidhom	LA	Abbot Labs Vectobac Granule	BTI	250	0.09	37.0930	-122.0940	Brown Gables Rd- Misc. Sources

35	2/8/2012	Nader Sidhom	LA	Zeocon Altosid Single Brood Granule	Methoprene	300	0.1	37.1012	-122.0327	Zayante 0.3 miles past Westwood Rd.
36	2/8/2012	Nader Sidhom	LA	Zeocon Altosid Single Brood Granule	Methoprene	250	0.09	37.0930	-122.0940	Brown Gables Rd-Misc. Sources
37	2/8/2012	Steve Driscoll	LA	Abbot Labs Vectobac Granule	BTI	13000	5	36.9257	-121.7288	LAKE TYNAN - S. END
38	2/8/2012	Steve Driscoll	LA	Zoecon Altosid Pellets (Water Soluble Pouch)	Methoprene	800	0.12	36.9854	-121.8368	CABRILLO SAND & GRAVEL PONDS
39	2/8/2012	Jacob Jones	LA	Natular Granule	Spinosad	4356	2	36.9087	-121.8103	GALLIGHAN SLOUGH - MAIN SECTION
40	2/8/2012	Jacob Jones	LA	Natular Granule	Spinosad	14157	6.5	36.9123	-121.8123	UPPER GALLIGHAN SL. (SIDE POOLS @ DUMP)
41	2/14/2012	Ray Travers	LA	Aquabac (200 G)	BTI	4888	2	36.9883	-121.9298	ATHERTON DR POND
42	2/14/2012	Ray Travers	LA	Aquabac (200 G)	BTI	2444	1	36.9868	-121.9349	DRAINAGE E. OF PARK AVE. (N. OF HWY1)
43	2/14/2012	Ray Travers	LA	Zoecon Altosid Pellets (Water Soluble Pouch)	Methoprene	1350	0.15	36.9868	-121.9349	DRAINAGE E. OF PARK AVE. (N. OF HWY1)
44	2/14/2012	Nader Sidhom	LA	VectoMax Coated Granule	BTI+BS	300	0.1	37.0389	-122.0217	#2 Flora, Wetlands
45	2/14/2012	Nader Sidhom	LA	VectoMax Coated Granule	BTI+BS	1000	0.4	37.0262	-122.0382	Rolling Woods Drive and Graham Hill, ponds and
46	2/15/2012	Melanie Benedetti	LA	Abbot Labs Vectobac Granule	BTI	125	0.05	36.9670	-122.0103	RR TRACKS BTW SEABRIGHT & SLR

47	2/15/2012	Melanie Benedetti	LA	Abbot Labs Vectobac Granule	BTI	13200	6	36.9608	-122.0608	MOORE CREEK - BTW HWY 1 & MISSION ST.
48	2/21/2012	Ray Travers	LA	Aquabac (200 G)	BTI	7332	3			POND@2615 WILLOW BROOK LN (NEAR PARK AVE
49	2/21/2012	Nader Sidhom	LA	Abbot Labs Vectobac Granule	BTI	1000	0.4			GLENWOOD wetland preserve
50	2/21/2012	Melanie Benedetti	LA	Abbot Labs Vectobac Granule	BTI	375	0.15	36.9855	-122.6835	UCSC BMP ON EMPIRE GRADE
51	2/21/2012	Melanie Benedetti	LA	Abbot Labs Vectobac Granule	BTI	200	0.07	36.9842	-122.0365	ARROYO DE SAN PEDRO-HARVEY WEST BLVD.@
52	2/22/2012	Steve Driscoll	LA	Abbot Labs Vectobac Granule	BTI	25	0.01	36.9500	-121.8776	SEASCZoecon Altosid Pellets RESORT GULCH
53	2/23/2012	Nader Sidhom	LA	Abbot Labs Vectobac Granule	BTI	100	0.05	37.1506	-122.1599	BCCC bedrock holes in creek
54	2/24/2012	Melanie Benedetti	LA	Abbot Labs Vectobac Granule	BTI	4000	1.76	36.9747	-121.9980	ARANA GULCH MARSH @ UPPER HARBOR (NW)
55	2/24/2012	Melanie Benedetti	LA	Abbot Labs Vectobac Granule	BTI	110	0.04	36.9738	-122.0498	BAY AV CK BTW HIGH ST. & ESCALONA
56	2/24/2012	Melanie Benedetti	LA	Abbot Labs Vectobac Granule	BTI	37000	6	36.9836	-122.0623	MOORE CREEK-UCSC ARBORETUM POND
57	2/24/2012	Steve Driscoll	LA	Abbot Labs Vectobac Granule	BTI	42000	18	36.9495	-121.7431	COLLEGE LAKE @ FAIRGROUNDS, NORTH
58	2/24/2012	Steve Driscoll	LA	Zoecon Altosid Pellets (Water Soluble Pouch)	Methoprene	125	0.03	36.9801	-121.8282	LA VIDA PONDING @ FREEDOM

59	2/28/2012	Ray Travers	LA	Aquabac (200 G)	BTI	228	0.114	36.9741	-121.9179	LAS OLAS @ SEACLIFF BEACH
60	2/28/2012	Ray Travers	LA	Aquabac (200 G)	BTI	3666	1.5	36.9718	-121.9771	RODEO TRIB. S. OF HARPER ST
61	2/28/2012	Ray Travers	LA	Zeocon Altosid Single Brood Granule	Methoprene	4888	2	36.9724	-121.9031	TREASURE ISLAND POND
62	2/28/2012	Ray Travers	LA	Zoecon Altosid Pellets (Water Soluble Pouch)	Methoprene	1350	0.15	36.9716	-121.9754	RODEO GULCH BTW CAPITOLA RD/BROMMER ST
63	2/28/2012	Ray Travers	LA	Zoecon Altosid Pellets (Water Soluble Pouch)	Methoprene	810	0.09	36.9741	-121.9179	LAS OLAS @ SEACLIFF BEACH
64	2/28/2012	Steve Driscoll	LA	Abbot Labs Vectobac Granule	BTI	150	0.05	36.9481	-121.7622	MINTO CHANNEL, EAST OF MINTO MARSH TO GREEN
65	3/2/2012	Ray Travers	LA	Aquabac (200 G)	BTI	4888	2	36.9967	-121.9804	ARANA GULCH TRIB. @ PAUL SWEET &
66	3/2/2012	Ray Travers	LA	Aquabac (200 G)	BTI	1222	0.5	36.9939	-121.9608	SOQUEL HIGH SCHOOL BASEBALL FIELD DRAINAGE
67	3/2/2012	Ray Travers	LA	Zeocon Altosid Single Brood Granule	Methoprene	2444	1	36.9939	-121.9608	SOQUEL HIGH SCHOOL BASEBALL FIELD DRAINAGE
68	3/2/2012	Ray Travers	LA	Zoecon Altosid Pellets (Water Soluble Pouch)	Methoprene	1620	0.18	36.9939	-121.9608	SOQUEL HIGH SCHOOL BASEBALL FIELD DRAINAGE
69	3/2/2012	Melanie Benedetti	LA	Abbot Labs Vectobac Granule	BTI	22000	6.5	36.9703	-122.0150	JESSIE MARSH
70	3/2/2012	Melanie Benedetti	LA	Agnique Monomolecular Film	MMF	1100	0.021	36.9703	-122.0150	JESSIE MARSH

71	3/2/2012	Melanie Benedetti	LA	Zoecon Altosid Pellets (Water Soluble Pouch)	Methoprene	18	0.045	36.9848	-121.9916	ARANA CK-BTW HWY 1 TO SOQUEL AV. (HARBOR H.S)
72	3/2/2012	Steve Driscoll	LA	Zoecon Altosid Pellets (Water Soluble Pouch)	Methoprene	150	0.03	36.9500	-121.8776	SEASCZoecon Altosid Pellets RESORT GULCH
73	3/2/2012	Jacob Jones	LA	Natular Granule	Spinosad	1089	0.5	36.9346	-121.7799	STRUVE CK. S. AIRPORT BLVD
74	3/2/2012	Jacob Jones	LA	Clarke Co. Golden Bear 1111	PD	200.4	0.023	36.9346	-121.7799	STRUVE CK. S. AIRPORT BLVD
75	3/2/2012	Jacob Jones	LA	Zoecon Altosid Pellets (Water Soluble Pouch)	Methoprene	650	0.075	36.9346	-121.7799	STRUVE CK. S. AIRPORT BLVD
76	3/2/2012	Jacob Jones	LA	Zoecon Altosid Pellets (Water Soluble Pouch)	Methoprene	1350	0.15	36.9187	-121.7773	STRUVE SL. N. MAIN - POND TO EAST SIDE
77	3/2/2012	Jacob Jones	LA	Zoecon Altosid Pellets (Water Soluble Pouch)	Methoprene	1550	0.225	36.9249	-121.8037	HARKINS SL S RAMPART - IN MEADOW
78	3/5/2012	Melanie Benedetti	LA	Abbot Labs Vectobac Granule	BTI	11200	3.8	36.9520	-122.0564	NATURAL BRIDGES POND
79	3/5/2012	Steve Driscoll	LA	Abbot Labs Vectobac Granule	BTI	8000	3	36.9706	-121.8115	MERK RD. LAGOON
80	3/5/2012	Steve Driscoll	LA	Zoecon Altosid Pellets (Water Soluble Pouch)	Methoprene	1400	0.18	36.9854	-121.8368	CABRILLO SAND & GRAVEL PONDS
81	3/5/2012	Jacob Jones	LA	Natular Granule	Spinosad	1080	0.5	36.8755	-121.8230	SUNSET STATE BEACH MARSH - SHOREBIRDS END
82	3/5/2012	Jacob Jones	LA	Zoecon Altosid Pellets (Water Soluble Pouch)	Methoprene	100	0.03	36.8734	-121.8213	SHOREBIRDS LAGOON

83	3/5/2012	Jacob Jones	LA	Zoecon Altosid Pellets (Water Soluble Pouch)	Methoprene	60	0.015	36.9067	-121.8380	DITCH BEHIND MAINT. BARN @ MBA DAIRY
84	3/6/2012	Nader Sidhom	LA	Abbot Labs Vectobac Granule	BTI	80	0.03			GLENWOOD wetland preserve
85	3/6/2012	Melanie Benedetti	LA	Agnique Monomolecular Film	MMF	100	0.002	36.9935	-122.0298	1969-2060 OCEAN ST. EXT.- E.DITCH
86	3/6/2012	Steve Driscoll	LA	Abbot Labs Vectobac Granule	BTI	5800	2.5	36.9757	-121.7635	908A CASSERLY POND @ YELLOW HOUSE
87	3/6/2012	Steve Driscoll	LA	Abbot Labs Vectobac Granule	BTI	4000	1.5	36.9796	-121.7551	SPRING HILLS DRAINAGES
88	3/6/2012	Steve Driscoll	LA	Abbot Labs Vectobac Granule	BTI	1500	0.5	36.9265	-121.7242	S TYNAN DITCHES
89	3/6/2012	Jacob Jones	LA	Zoecon Altosid Pellets (Water Soluble Pouch)	Methoprene	1000	0.12	36.9204	-121.8360	SAN ANDREAS / R.R. POND
90	3/7/2012	Ray Travers	LA	Aquabac (200 G)	BTI	3666	1.5	36.9799	-121.9915	POND BEHIND SESTRI REST.
91	3/7/2012	Nader Sidhom	LA	Abbot Labs Vectobac Granule	BTI	600	0.2	37.1012	-122.0327	Zayante 0.3 miles past Westwood Rd.
92	3/8/2012	Steve Driscoll	LA	Zoecon Altosid Pellets (Water Soluble Pouch)	Methoprene	700	0.09	36.9632	-121.7905	778 AMESTI CHANNEL
93	3/12/2012	Ray Travers	LA	Aquabac (200 G)	BTI	76	0.038	36.9983	-121.9056	DITCHES IN NISENE MARKS
94	3/12/2012	Ray Travers	LA	Aquabac (200 G)	BTI	1222	0.5	36.9925	-121.9216	RIPARIAN WETLAND @ CABRILLO COLLEGE

95	3/19/2012	Melanie Benedetti	LA	Abbot Labs Vectobac Granule	BTI	210	0.08	36.9859	-122.0364	ARROYO DE SAN PEDRO-UPS & PLANTRONICS
96	3/20/2012	Melanie Benedetti	LA	Abbot Labs Vectobac Granule	BTI	520	0.21	36.9855	-122.6835	UCSC BMP ON EMPIRE GRADE
97	3/20/2012	Steve Driscoll	LA	Abbot Labs Vectobac Granule	BTI	5500	2	36.9795	-121.8618	SHADOWMERE FIELD - FREEDOM
98	3/20/2012	Steve Driscoll	LA	Zoecon Altosid Pellets (Water Soluble Pouch)	Methoprene	75	0.015	36.9655	-121.8827	APTOS GOLF COURSE MAINTENANCE
99	3/21/2012	Nader Sidhom	LA	Zoecon Altosid Pellets (Water Soluble Pouch)	Methoprene	1100	0.165	37.0262	-122.0382	Rolling Woods Drive and Graham Hill, ponds and
100	3/21/2012	Steve Driscoll	LA	Abbot Labs Vectobac Granule	BTI	12000	5	36.9560	-121.7427	COLLEGE LAKE N. OF WHITING RD.
101	3/21/2012	Jacob Jones	LA	Zoecon Altosid Pellets (Water Soluble Pouch)	Methoprene	135	0.03	36.9264	-121.8046	DITCH ALONG RD. TO HARKINS SL. OFF RAMPART
102	3/22/2012	Melanie Benedetti	LA	Abbot Labs Vectobac Granule	BTI	2200	0.9	36.9703	-122.0150	JESSIE MARSH
103	3/22/2012	Steve Driscoll	LA	Abbot Labs Vectobac Granule	BTI	10000	4	36.9661	-121.7401	ROSE RESERVOIR
104	3/22/2012	Steve Driscoll	LA	Abbot Labs Vectobac Granule	BTI	5000	2	36.9626	-121.7416	BJUR RD POND.
105	3/22/2012	Jacob Jones	LA	Clarke Co. Golden Bear 1111	PD	1200	0.082	36.9249	-121.8037	HARKINS SL S RAMPART - IN MEADOW
106	3/23/2012	Steve Driscoll	LA	Abbot Labs Vectobac Granule	BTI	6000	2.5	36.9505	-121.7609	MINTO MARSH

107	3/23/2012	Jacob Jones	LA	Natular Granule	Spinosad	9630	2	36.9066	-121.7904	EAST BRANCH OF EAST ARM OF HANSON SLOUGH
108	3/23/2012	Jacob Jones	LA	Natular Granule	Spinosad	26350	5	36.9036	-121.7921	EAST ARM OF HANSON SLOUGH
109	3/28/2012	Melanie Benedetti	LA	Abbot Labs Vectobac Granule	BTI	25	0.01	36.9887	-121.9950	HOLWAY DR./ MORRISSEY BLVD. DRAINAGE
110	3/29/2012	Melanie Benedetti	LA	Abbot Labs Vectobac Granule	BTI	4560	1.9	36.9936	-122.0000	DELAVEAGA MAINTENANCE RESERVOIR
111	4/2/2012	Ray Travers	LA	Aquabac (200 G)	BTI	814	0.33	36.9939	-121.9608	SOQUEL HIGH SCHOOL BASEBALL FIELD DRAINAGE
112	4/2/2012	Ray Travers	LA	Zeocon Altosid Briquets	Methoprene	2200	0.352	36.9939	-121.9608	SOQUEL HIGH SCHOOL BASEBALL FIELD DRAINAGE
113	4/2/2012	Nader Sidhom	LA	Abbot Labs Vectobac Granule	BTI	800	0.35	36.9518	-122.0559	Natular GranuleURAL BRIDGES STATE
114	4/2/2012	Steve Driscoll	LA	Zoecon Altosid Pellets (Water Soluble Pouch)	Methoprene	600	0.09	36.9725	-121.8803	HWY MARSH NEXT TO VALENCIA LAGOON
115	4/3/2012	Ray Travers	LA	Abbot Labs Vectobac Granule	BTI	4888	2	36.9920	-121.9253	POND IN TANNERY GULCH @ CABRILLO COLLEGE
116	4/3/2012	Ray Travers	LA	Zeocon Altosid Briquets	Methoprene	500	0.08	36.9741	-121.9179	LAS OLAS @ SEACLIFF BEACH
117	4/3/2012	Steve Driscoll	LA	VectoMax Coated Granule	BTI+BS	2500	1.2	36.9697	-121.8192	CHANNEL TO FREEDOM LAKE
118	4/3/2012	Steve Driscoll	LA	Zoecon Altosid Pellets (Water Soluble Pouch)	Methoprene	20	0.015	36.9655	-121.8827	APTOS GOLF COURSE MAINTENANCE

119	4/6/2012	Ray Travers	LA	Zoecon Altosid Pellets (Water Soluble Pouch)	Methoprene	1620	0.18	36.9870	-121.9891	HARBOR HIGH POND E. OF TENNIS COURTS
120	4/6/2012	Nader Sidhom	LA	Zoecon Altosid Pellets (Water Soluble Pouch)	Methoprene	45	0.015	37.1656	-122.1632	China Grade ditches
121	4/17/2012	Steve Driscoll	LA	Zoecon Altosid Pellets (Water Soluble Pouch)	Methoprene	575	0.075	36.9753	-121.7593	Zoecon Altosid Pellets (Water Soluble Pouch)EN
122	4/18/2012	Jacob Jones	LA	Vectolex Biological Larvicide	BS	10890	5	36.9311	-121.7623	BREWINGTON CHECK POND
123	4/18/2012	Jacob Jones	LA	VectoMax Coated Granule	BTI+BS	30492	14	36.9173	-121.8045	HARKINS SL. N. HARKINS SL. RD. W. OF CHANNEL
124	4/18/2012	Jacob Jones	LA	Zeocon Altosid Single Brood Granule	Methoprene	10890	5	36.9311	-121.7623	BREWINGTON CHECK POND
125	4/19/2012	Ray Travers	LA	Zeocon Altosid Briquets	Methoprene	1000	0.16	36.9794	-121.8925	TROUT GULCH @ VALENCIA RD.
126	4/19/2012	Ray Travers	LA	Zeocon Altosid Briquets	Methoprene	3300	0.528	36.9983	-121.9056	DITCHES IN NISENE MARKS
127	4/19/2012	Ray Travers	LA	Zoecon Altosid Pellets (Water Soluble Pouch)	Methoprene	2970	0.33	36.9794	-121.8925	TROUT GULCH @ VALENCIA RD.
128	4/19/2012	Ray Travers	LA	Zoecon Altosid Pellets (Water Soluble Pouch)	Methoprene	3645	0.405	36.9870	-121.9891	HARBOR HIGH POND E. OF TENNIS COURTS
129	4/19/2012	Melanie Benedetti	LA	Abbot Labs Vectobac Granule	BTI	22000	5	36.9624	-122.0283	NEARYS LAGOON-RR SECTION
130	4/19/2012	Jacob Jones	LA	Clarke Co. Golden Bear 1111	PD	2000	0.004	36.9311	-121.7623	BREWINGTON CHECK POND

131	4/20/2012	Ray Travers	LA	Zeocon Altosid Briquets	Methoprene	600	0.096	36.9767	-121.9169	R.R. @ SEARIDGE/ MAR VISTA
132	4/20/2012	Nader Sidhom	LA	Abbot Labs Vectobac Granule	BTI	600	0.1	37.0490	-122.0190	POND & DRAINAGE @ 1 CIVIC CENTER DR-SV CIVIC
133	4/20/2012	Nader Sidhom	LA	Abbot Labs Vectobac Granule	BTI	1000	0.3	37.0389	-122.0217	#2 Flora, Wetlands
134	4/20/2012	Nader Sidhom	LA	Abbot Labs Vectobac Granule	BTI	900	0.2	37.1012	-122.0327	Zayante 0.3 miles past Westwood Rd.
135	4/20/2012	Nader Sidhom	LA	Zeocon Altosid Single Brood Granule	Methoprene	1000	0.3	37.0389	-122.0217	#2 Flora, Wetlands
136	4/20/2012	Nader Sidhom	LA	Zeocon Altosid Single Brood Granule	Methoprene	600	0.1	37.0490	-122.0190	POND & DRAINAGE @ 1 CIVIC CENTER DR-SV CIVIC
137	4/23/2012	Ray Travers	LA	Abbot Labs Vectobac Granule	BTI	400	0.08	37.0000	-121.8989	DITCH @ REDWOOD DR. & CAMPUS DR.
138	4/23/2012	Ray Travers	LA	Zeocon Altosid Briquets	Methoprene	400	0.064	37.0000	-121.8989	DITCH @ REDWOOD DR. & CAMPUS DR.
139	4/23/2012	Ray Travers	LA	Zeocon Altosid Briquets	Methoprene	900	0.144	36.9815	-121.9892	POLO GROUNDS PARK OFF 2255 HUNTINGTON DR.
140	4/23/2012	Ray Travers	LA	Zeocon Altosid Briquets	Methoprene	400	0.064	37.0000	-121.8989	DITCH @ REDWOOD DR. & CAMPUS DR.
141	4/23/2012	Melanie Benedetti	LA	Abbot Labs Vectobac Granule	BTI	15000	5	36.9747	-121.9980	ARANA GULCH MARSH @ UPPER HARBOR (NW)
142	4/23/2012	Melanie Benedetti	LA	Abbot Labs Vectobac Granule	BTI	35	0.01	36.9746	-122.0014	LOWER HAGEMANN CREEK @ UPPER HARBOR

143	4/23/2012	Melanie Benedetti	LA	Abbot Labs Vectobac Granule	BTI	5	0.001	36.9753	-121.9985	ARANA FIELD-PONDING
144	4/24/2012	Steve Driscoll	LA	Zoecon Altosid Pellets (Water Soluble Pouch)	Methoprene	500	0.075	36.9632	-121.7905	778 AMESTI CHANNEL
145	4/25/2012	Steve Driscoll	LA	Clarke Co. Golden Bear 1111	PD	10000	1	36.9505	-121.7609	MINTO MARSH
146	4/25/2012	Steve Driscoll	LA	VectoMax Coated Granule	BTI+BS	7000	2.4	36.9661	-121.7401	ROSE RESERVOIR
147	4/26/2012	Jacob Jones	LA	VectoMax Coated Granule	BTI+BS	4356	2	36.9101	-124.7783	EAST ARM OFF MAIN SECTION OF STRUVE SL. N. OF
148	4/30/2012	Steve Driscoll	LA	Clarke Co. Golden Bear 1111	PD	4	0.0004	36.9595	-121.8792	BUSH GULCH N OF GREENBRIAR
149	4/30/2012	Steve Driscoll	LA	Zoecon Altosid Pellets (Water Soluble Pouch)	Methoprene	200	0.03	36.9595	-121.8792	BUSH GULCH N OF GREENBRIAR
150	4/30/2012	Jacob Jones	LA	VectoMax Coated Granule	BTI+BS	4356	2	36.9179	-121.7643	WATSONVILLE SL N. MAIN
151	5/1/2012	Melanie Benedetti	LA	Abbot Labs Vectobac Granule	BTI	30	0.006	36.9935	-122.0298	1969-2060 OCEAN ST. EXT.- E.DITCH
152	5/1/2012	Steve Driscoll	LA	VectoMax Coated Granule	BTI+BS	30000	12	36.9706	-121.8115	MERK RD. LAGOON
153	5/1/2012	Steve Driscoll	LA	VectoMax Coated Granule	BTI+BS	2500	1.2	36.9754	-121.8166	203 MERK RD. SPRING/CREEK
154	5/2/2012	Melanie Benedetti	LA	Zoecon Altosid Pellets (Water Soluble Pouch)	Methoprene	810	0.09	36.9910	-121.9873	ARANA CK -N OF HWY 1 AT BROOKWOOD DR.

155	5/3/2012	Melanie Benedetti	LA	Abbot Labs Vectobac Granule	BTI	200	0.06	36.9738	-122.0498	BAY AV CK BTW HIGH ST. & ESCALONA
156	5/3/2012	Melanie Benedetti	LA	Zoecon Altosid Pellets (Water Soluble Pouch)	Methoprene	135	0.015	36.9840	-121.9957	LA FONDA AVE. N. AND S. OF ABBEY CT.
157	5/7/2012	Melanie Benedetti	LA	Abbot Labs Vectobac Granule	BTI	24	0.0016	36.9595	-122.0598	MOORE CREEK- BTW MISSION ST. & ANTONELLI'S POND
158	5/7/2012	Melanie Benedetti	LA	Abbot Labs Vectobac Granule	BTI	235	0.08	36.9637	-122.0599	MOORE CREEK- N OF HWY 1
159	5/8/2012	Paul Binding	LA	Vectolex WDG	BS	13800	0.3	36.9939	-121.9608	SOQUEL HIGH SCHOOL BASEBALL FIELD DRAINAGE
160	5/8/2012	Nader Sidhom	LA	Abbot Labs Vectobac Granule	BTI	1300	0.5	37.0490	-122.0190	POND & DRAINAGE @ 1 CIVIC CENTER DR-SV CIVIC
161	5/8/2012	Nader Sidhom	LA	Zeocon Altosid Single Brood Granule	Methoprene	1300	0.5	37.0490	-122.0190	POND & DRAINAGE @ 1 CIVIC CENTER DR-SV CIVIC
162	5/10/2012	Paul Binding	LA	Agnique Monomolecular Film	MMF	13800	0.16	36.9939	-121.9608	SOQUEL HIGH SCHOOL BASEBALL FIELD DRAINAGE
163	5/10/2012	Paul Binding	LA	Vectobac 12AS	BTI	10000	0.06	36.9939	-121.9608	SOQUEL HIGH SCHOOL BASEBALL FIELD DRAINAGE
164	5/10/2012	Nader Sidhom	LA	Zoecon Altosid Pellets (Water Soluble Pouch)	Methoprene	600	0.105	37.0262	-122.0382	Rolling Woods Drive and Graham Hill, ponds and
165	5/10/2012	Melanie Benedetti	LA	Abbot Labs Vectobac Granule	BTI	5280	2.2	36.9870	-121.9891	HARBOR HIGH POND E. OF TENNIS COURTS
166	5/10/2012	Melanie Benedetti	LA	Abbot Labs Vectobac Granule	BTI	250	0.1	36.9870	-121.9878	UPPER DRAINAGE @ HARBOR HIGH POND

167	5/14/2012	Ray Travers	LA	Zeocon Altosid Single Brood Granule	Methoprene	12220	5	36.9870	-121.9891	HARBOR HIGH POND E. OF TENNIS COURTS
168	5/14/2012	Steve Driscoll	LA	Zeocon Altosid Briquets	Methoprene	600	0.096	36.9725	-121.8803	HWY MARSH NEXT TO VALENCIA LAGOON
169	5/14/2012	Jacob Jones	LA	VectoMax Coated Granule	BTI+BS	2200	1	36.9227	-121.8050	HARKINS SL S RAMPART- IN AG FIELDS
170	5/14/2012	Jacob Jones	LA	VectoMax Coated Granule	BTI+BS	4356	2	36.9173	-121.8045	HARKINS SL. N. HARKINS SL. RD. W. OF CHANNEL
171	5/15/2012	Ray Travers	LA	Abbot Labs Vectobac Granule	BTI	9776	4	36.9868	-121.9349	DRAINAGE E. OF PARK AVE. (N. OF HWY1)
172	5/15/2012	Ray Travers	LA	Altosid Residual Briquets	Methoprene	300	2.4	36.9868	-121.9349	DRAINAGE E. OF PARK AVE. (N. OF HWY1)
173	5/15/2012	Ray Travers	LA	Clarke Co. Golden Bear 1111	PD	600	0.048	36.9835	-121.9832	LEONA CREEK BTW HWY 1 / RODRIGUEZ (VISTA
174	5/15/2012	Ray Travers	LA	Zeocon Altosid Single Brood Granule	Methoprene	2444	1	36.9835	-121.9832	LEONA CREEK BTW HWY 1 / RODRIGUEZ (VISTA
175	5/15/2012	Ray Travers	LA	Zoecon Altosid Pellets (Water Soluble Pouch)	Methoprene	6750	0.75	36.9716	-121.9754	RODEO GULCH BTW CAPITOLA RD/BROMMER ST
176	5/15/2012	Melanie Benedetti	LA	Abbot Labs Vectobac Granule	BTI	750	0.3	37.1147	-122.1509	BRAEMOOR DR. CENTRAL DRAINAGE
177	5/15/2012	Melanie Benedetti	LA	Abbot Labs Vectobac Granule	BTI	125	0.05	37.1134	-122.1502	PITTMAN POND N ACCESS-DD ON NS
178	5/15/2012	Steve Driscoll	LA	Clarke Co. Golden Bear 1111	PD	900	0.08	36.9858	-121.8110	70 ALDRIDGE LANE DITCH

179	5/15/2012	Steve Driscoll	LA	Clarke Co. Golden Bear 1111	PD	300	0.032	36.9624	-121.7734	TRIB TO NE ARM PINTO
180	5/15/2012	Steve Driscoll	LA	Zoecon Altosid Pellets (Water Soluble Pouch)	Methoprene	500	0.075	36.9858	-121.8110	70 ALDRIDGE LANE DITCH
181	5/16/2012	Ray Travers	LA	Zoecon Altosid Pellets (Water Soluble Pouch)	Methoprene	3375	0.375	36.9939	-121.9608	SOQUEL HIGH SCHOOL BASEBALL FIELD DRAINAGE
182	5/16/2012	Ray Travers	LA	Zoecon Altosid Pellets (Water Soluble Pouch)	Methoprene	945	0.105	36.9807	-121.9726	RODEO GULCH BTW SOQUEL AVE/COFFEY LN
183	5/16/2012	Melanie Benedetti	LA	Abbot Labs Vectobac Granule	BTI	450	0.18	36.9655	-122.0096	SOUTH PILKINGTON CK (ON BROOK LN S OF RR)
184	5/16/2012	Steve Driscoll	LA	Clarke Co. Golden Bear 1111	PD	500	0.048	36.9375	-121.8079	LV CHANNEL @ BUENA VISTA
185	5/16/2012	Steve Driscoll	LA	Clarke Co. Golden Bear 1111	PD	700	0.064	36.9454	-121.8191	LV CHANNEL WINDSONG TO CARSON
186	5/16/2012	Steve Driscoll	LA	Clarke Co. Golden Bear 1111	PD	200	0.02	36.9471	-121.8235	LV CHANNEL TRAVIS LN TO WINDSONG
187	5/16/2012	Steve Driscoll	LA	VectoMax Coated Granule	BTI+BS	4000	1.5	36.9679	-121.7726	KLIEWER RD DITCHES
188	5/17/2012	Ray Travers	LA	Altosid Residual Briquets	Methoprene	2500	2	36.9681	-121.9885	NE DRAINAGE INTO SCHWAN LAKE (BEHIND SIMPKINS)
189	5/17/2012	Ray Travers	LA	Zoecon Altosid Pellets (Water Soluble Pouch)	Methoprene	945	0.105	36.9681	-121.9885	NE DRAINAGE INTO SCHWAN LAKE (BEHIND SIMPKINS)
190	5/17/2012	Nader Sidhom	LA	Abbot Labs Vectobac Granule	BTI	600	0.2	37.1218	-122.1237	LAUREL DITCH BELOW BOULDER CK ELEMENTARY

191	5/17/2012	Nader Sidhom	LA	Zoecon Altosid Pellets	Methoprene	500	0.075	37.1257	-122.1191	SLR @ LOMOND ST (BOULDER CK CITY)
192	5/17/2012	Melanie Benedetti	LA	Abbot Labs Vectobac Granule	BTI	520	0.23	36.9879	-121.9953	ARANA CREEK (LA FONDA TRIBUTARY)
193	5/17/2012	Melanie Benedetti	LA	Abbot Labs Vectobac Granule	BTI	4400	1.84	36.9851	-121.9914	ARANA CREEK OXBOW POND S. OF HARBOR HIGH
194	5/17/2012	Melanie Benedetti	LA	VectoMax Water Soluble Pouch	BTI+BS	50	0.022	36.9848	-121.9916	ARANA CK-BTW HWY 1 TO SOQUEL AV. (HARBOR H.S)
195	5/17/2012	Steve Driscoll	LA	Clarke Co. Golden Bear 1111	PD	1200	0.176	36.9796	-121.7551	SPRING HILLS DRAINAGES
196	5/17/2012	Steve Driscoll	LA	VectoMax Coated Granule	BTI+BS	6000	2.4	36.9757	-121.7635	908A CASSERLY POND @ YELLOW HOUSE
197	5/18/2012	Ray Travers	LA	Altosid Residual Briquets	Methoprene	2500	2	36.9681	-121.9885	NE DRAINAGE INTO SCHWAN LAKE (BEHIND SIMPKINS)
198	5/18/2012	Ray Travers	LA	Zoecon Altosid Pellets (Water Soluble Pouch)	Methoprene	945	0.105	36.9681	-121.9885	NE DRAINAGE INTO SCHWAN LAKE (BEHIND SIMPKINS)
199	5/18/2012	Melanie Benedetti	LA	Abbot Labs Vectobac Granule	BTI	270	0.12	36.9842	-122.0365	ARROYO DE SAN PEDRO-HARVEY WEST BLVD.@
200	5/18/2012	Melanie Benedetti	LA	Abbot Labs Vectobac Granule	BTI	625	0.25	36.9859	-122.0364	ARROYO DE SAN PEDRO-UPS & PLANTRONICS
201	5/18/2012	Melanie Benedetti	LA	Abbot Labs Vectobac Granule	BTI	750	0.3	36.9820	-122.0343	EVERGREEN ST. HARVEY WEST BASEBALL FIELD
202	5/18/2012	Melanie Benedetti	LA	Agnique Monomolecular Film	MMF	1010	0.023	36.9820	-122.0343	EVERGREEN ST. HARVEY WEST BASEBALL FIELD

203	5/18/2012	Melanie Benedetti	LA	Agnique Monomolecular Film	MMF	335	0.0078	36.9851	-121.9914	ARANA CREEK OXBOW POND S. OF HARBOR HIGH
204	5/18/2012	Melanie Benedetti	LA	VectoMax Water Soluble Pouch	BTI+BS	30	0.11	36.9848	-121.9916	ARANA CK-BTW HWY 1 TO SOQUEL AV. (HARBOR H.S)
205	5/18/2012	Steve Driscoll	LA	Clarke Co. Golden Bear 1111	PD	800	0.07	36.9679	-121.7726	KLIEWER RD DITCHES
206	5/18/2012	Steve Driscoll	LA	VectoMax Coated Granule	BTI+BS	15000	6	36.9505	-121.7609	MINTO MARSH
207	5/18/2012	Jacob Jones	LA	Natular Granule	Spinosad	5000	1	36.9301	-121.7743	STRUVE CK MARSH @ LANDIS
208	5/18/2012	Jacob Jones	LA	Natular Granule	Spinosad	24200	5	36.9301	-121.8382	SPRING VALLEY RD CREEK @ WILLOW CK RD
209	5/20/2012	Nader Sidhom	LA	Abbot Labs Vectobac Granule	BTI	100	0.04	37.0389	-122.0217	#2 Flora, Wetlands
210	5/20/2012	Nader Sidhom	LA	Abbot Labs Vectobac Granule	BTI	600	0.3	37.1012	-122.0327	Zayante 0.3 miles past Westwood Rd.
211	5/20/2012	Nader Sidhom	LA	Zeocon Altosid Single Brood Granule	Methoprene	600	0.3	37.1012	-122.0327	Zayante 0.3 miles past Westwood Rd.
212	5/21/2012	Ray Travers	LA	Abbot Labs Vectobac Granule	BTI	4277	1.75	36.9870	-121.9891	HARBOR HIGH POND E. OF TENNIS COURTS
213	5/21/2012	Ray Travers	LA	Abbot Labs Vectobac Granule	BTI	2444	1	36.9870	-121.9878	UPPER DRAINAGE @ HARBOR HIGH POND
214	5/21/2012	Ray Travers	LA	STD	BTI	600	0.168	36.9870	-121.9878	UPPER DRAINAGE @ HARBOR HIGH POND

215	5/21/2012	Ray Travers	LA	Zeocon Altosid Briquets	Methoprene	1400	0.224	36.9870	-121.9878	UPPER DRAINAGE @ HARBOR HIGH POND
216	5/21/2012	Ray Travers	LA	Zeocon Altosid Briquets	Methoprene	1100	0.176	36.9870	-121.9891	HARBOR HIGH POND E. OF TENNIS COURTS
217	5/21/2012	Jacob Jones	LA	Altosid Extended Residual Granule	Methoprene	65340	15	36.8612	-121.8137	LEVEE MARSH S OF BEACH RD E WAT SL
218	5/21/2012	Jacob Jones	LA	Zeocon Altosid Briquets	Methoprene	1000	0.16	36.8957	-121.8066	HARKINS SL. S. OF R.R. W OF CHANNEL
219	5/22/2012	Ray Travers	LA	Abbot Labs Vectobac Granule	BTI	4888	2	36.9785	-121.9840	LEONA CK BTW WEBSTER ST/15th AVE
220	5/22/2012	Ray Travers	LA	Abbot Labs Vectobac Granule	BTI	1833	0.75	36.9681	-121.9885	NE DRAINAGE INTO SCHWAN LAKE (BEHIND SIMPKINS)
221	5/22/2012	Ray Travers	LA	Abbot Labs Vectobac Granule	BTI	611	0.25	36.9851	-121.9437	NOBEL CREEK NORTH OF HWY. 1
222	5/22/2012	Ray Travers	LA	Abbot Labs Vectobac Granule	BTI	611	0.25	36.9872	-121.9454	NOBEL CK TRIB. @ SOQUEL GLEN MHP (W OF
223	5/22/2012	Ray Travers	LA	Abbot Labs Vectobac Granule	BTI	6110	2.5	36.9864	-121.9440	NOBEL CK TRIB. @ SOQUEL GLEN MHP (E OF
224	5/22/2012	Ray Travers	LA	Altosid Residual Briquets	Methoprene	700	0.56	36.9851	-121.9437	NOBEL CREEK NORTH OF HWY. 1
225	5/22/2012	Ray Travers	LA	Zeocon Altosid Briquets	Methoprene	2500	0.4	36.9785	-121.9840	LEONA CK BTW WEBSTER ST/15th AVE
226	5/22/2012	Ray Travers	LA	Zeocon Altosid Briquets	Methoprene	3700	0.592	36.9864	-121.9440	NOBEL CK TRIB. @ SOQUEL GLEN MHP (E OF

227	5/22/2012	Ray Travers	LA	Zeocon Altosid Briquets	Methoprene	1300	0.208	36.9872	-121.9454	NOBEL CK TRIB. @ SOQUEL GLEN MHP (W OF
228	5/22/2012	Ray Travers	LA	Zoecon Altosid Pellets (Water Soluble Pouch)	Methoprene	6750	0.75	36.9785	-121.9840	LEONA CK BTW WEBSTER ST/15th AVE
229	5/22/2012	Steve Driscoll	LA	Clarke Co. Golden Bear 1111	PD	120	0.008	36.9584	-121.7593	MELODY LANE CREEK
230	5/22/2012	Jacob Jones	LA	Zeocon Altosid Briquets	Methoprene	370	0.112	36.8957	-121.8066	HARKINS SL. S. OF R.R. W OF CHANNEL
231	5/23/2012	Steve Driscoll	LA	Zeocon Altosid Briquets	Methoprene	500	0.09	36.9584	-121.7593	MELODY LANE CREEK
232	5/23/2012	Jacob Jones	LA	Natular Granule	Spinosad	24200	5	36.9027	-121.7845	STRUVE SL S. LEE RD
233	5/23/2012	Jacob Jones	LA	Zeocon Altosid Briquets	Methoprene	1200	0.192	36.9358	-121.7761	STR. CK TRIB @ CHURCH ON CAREY
234	5/24/2012	Ray Travers	LA	Abbot Labs Vectobac Granule	BTI	4888	2	36.9766	-121.9747	RODEO GULCH BTW COFFEY LN/CAPITOLA RD
235	5/24/2012	Ray Travers	LA	Altosid Residual Briquets	Methoprene	1500	1.2	36.9766	-121.9747	RODEO GULCH BTW COFFEY LN/CAPITOLA RD
236	5/24/2012	Ray Travers	LA	Clarke Co. Golden Bear 1111	PD	5120	0.4	36.9785	-121.9840	LEONA CK BTW WEBSTER ST/15th AVE
237	5/24/2012	Ray Travers	LA	Four Star 180 day Briquets	BTI+BS	400	0.53	36.9868	-121.9349	DRAINAGE E. OF PARK AVE. (N. OF HWY1)
238	5/24/2012	Ray Travers	LA	Four Star 180 day Briquets	BTI+BS	1900	1.25	36.9766	-121.9747	RODEO GULCH BTW COFFEY LN/CAPITOLA RD

239	5/24/2012	Ray Travers	LA	Zoecon Altosid Pellets (Water Soluble Pouch)	Methoprene	5805	0.65	36.9868	-121.9349	DRAINAGE E. OF PARK AVE. (N. OF HWY1)
240	5/24/2012	Ray Travers	LA	Zoecon Altosid Pellets (Water Soluble Pouch)	Methoprene	6750	50	36.9766	-121.9747	RODEO GULCH BTW COFFEY LN/CAPITOLA RD
241	5/24/2012	Jacob Jones	LA	Altosid Extended Residual Granule	Methoprene	8000	1.83	36.9055	-121.7736	OHLONE BMP @ SANTA CATALINA
242	5/24/2012	Jacob Jones	LA	Altosid Extended Residual Granule	Methoprene	3000	1	36.9320	-121.8604	SPRING VALLEY RD CREEK @ SAN ANDREAS RD.
243	5/29/2012	Jacob Jones	LA	Natular Granule	Spinosad	24200	5	36.8839	-121.8086	WATSONVILLE SLOUGH S SAN ANDREAS RD
244	5/31/2012	Ray Travers	LA	Clarke Co. Golden Bear 1111	PD	600	0.048	36.9681	-121.9885	NE DRAINAGE INTO SCHWAN LAKE (BEHIND SIMPKINS)
245	5/31/2012	Ray Travers	LA	Four Star 180 day Briquets	BTI+BS	400	0.264	36.9835	-121.9832	LEONA CREEK BTW HWY 1 / RODRIGUEZ (VISTA
246	5/31/2012	Ray Travers	LA	Zeocon Altosid Briquets	Methoprene	1320	2.112	36.9681	-121.9885	NE DRAINAGE INTO SCHWAN LAKE (BEHIND SIMPKINS)
247	5/31/2012	Nader Sidhom	LA	Abbot Labs Vectobac Granule	BTI	900	0.4	37.0730	-122.0565	8111 E. Zayante Rd.- Resident's(Channel at Zayante Fire
248	5/31/2012	Nader Sidhom	LA	Zeocon Altosid Single Brood Granule	Methoprene	900	0.4	37.0730	-122.0565	8111 E. Zayante Rd.- Resident's(Channel at Zayante Fire
249	5/31/2012	Melanie Benedetti	LA	Four Star 180 day Briquets	BTI+BS	100	0.066	36.9642	-122.0297	NEARYS LAGOON- NE. SECTION
250	6/1/2012	Ray Travers	LA	Altosid Residual Briquets	Methoprene	100	0.08	36.9996	-121.9573	DD ON ADAR LN (SURROUNDING PARK)

251	6/1/2012	Steve Driscoll	LA	Zeocon Altosid Single Brood Granule	Methoprene	88000	35	36.9600	-121.7714	PINTO LAKE
252	6/5/2012	Steve Driscoll	LA	Natular Granule	Spinosad	3200	1.2	36.9796	-121.7551	SPRING HILLS DRAINAGES
253	6/5/2012	Steve Driscoll	LA	Clarke Co. Golden Bear 1111	PD	150	0.009	36.9459	-121.7549	MINTO CHANNEL TO WILSON YARD
254	6/6/2012	Ray Travers	LA	Abbot Labs Vectobac Granule	BTI	2444	1	36.9807	-121.9726	RODEO GULCH BTW SOQUEL AVE/COFFEY LN
255	6/6/2012	Ray Travers	LA	Altosid Residual Briquets	Methoprene	100	0.08	36.9644	-121.9811	650 CORCORAN AVE (DRAINAGE PIPE)
256	6/6/2012	Ray Travers	LA	Four Star 180 day Briquets	BTI+BS	100	0.066	36.9644	-121.9811	650 CORCORAN AVE (DRAINAGE PIPE)
257	6/6/2012	Ray Travers	LA	Zeocon Altosid Briquets	Methoprene	5200	0.832	36.9807	-121.9726	RODEO GULCH BTW SOQUEL AVE/COFFEY LN
258	6/7/2012	Melanie Benedetti	LA	Abbot Labs Vectobac Granule	BTI	1250	0.44	36.9971	-121.9915	SANTA CRUZ ARCHERY RANGE, GATE AT END OF
259	6/7/2012	Melanie Benedetti	LA	Abbot Labs Vectobac Granule	BTI	22	0.01	36.9889	-121.9974	616 PARK WAY @ MORRISSEY BLVD.
260	6/7/2012	Melanie Benedetti	LA	Abbot Labs Vectobac Granule	BTI	600	0.23	36.9928	-121.9978	ARANA CK-PARK WY TRIB
261	6/7/2012	Steve Driscoll	LA	VectoMax Coated Granule	BTI+BS	270000	120	36.9600	-121.7714	PINTO LAKE
262	6/7/2012	Steve Driscoll	LA	Zeocon Altosid Single Brood Granule	Methoprene	242000	105	36.9600	-121.7714	PINTO LAKE

263	6/7/2012	Jacob Jones	LA	VectoMax Coated Granule	BTI+BS	14520	5	36.9167	-121.7827	STRUVE SL. S. MAIN - WILLOWS BEHIND OSH
264	6/11/2012	Melanie Benedetti	LA	Clarke Co. Golden Bear 1111	PD	50	0.003	36.9796	-122.0251	SLR S HIWAY 1
265	6/11/2012	Melanie Benedetti	LA	Zoecon Altosid Pellets (Water Soluble Pouch)	Methoprene	50	0.015	36.9796	-122.0251	SLR S HIWAY 1
266	6/11/2012	Steve Driscoll	LA	Four Star 180 day Briquets	BTI+BS	400	0.264	36.9679	-121.7726	KLIEWER RD DITCHES
267	6/13/2012	Ray Travers	LA	Abbot Labs Vectobac Granule	BTI	4399	1.8	36.9870	-121.9891	HARBOR HIGH POND E. OF TENNIS COURTS
268	6/13/2012	Ray Travers	LA	Abbot Labs Vectobac Granule	BTI	2444	1	36.9736	-121.9751	RODEO GULCH POND @ CAPITOLA RD/30th AVE
269	6/13/2012	Ray Travers	LA	Zeocon Altosid Briquets	Methoprene	3300	0.528	36.9870	-121.9891	HARBOR HIGH POND E. OF TENNIS COURTS
270	6/13/2012	Melanie Benedetti	LA	Abbot Labs Vectobac Granule	BTI	250	0.1	36.9900	-121.9886	ARANA CREEK TRIB. @ BROOKWOOD DR.
271	6/13/2012	Melanie Benedetti	LA	Abbot Labs Vectobac Granule	BTI	1650	0.66	36.9879	-121.9953	ARANA CREEK (LA FONDA TRIBUTARY)
272	6/13/2012	Melanie Benedetti	LA	Clarke Co. Golden Bear 1111	PD	75	0.005	36.9900	-121.9886	ARANA CREEK TRIB. @ BROOKWOOD DR.
273	6/13/2012	Melanie Benedetti	LA	Four Star 45 Day Briquets	BTI+BS	300	0.022	37.0088	-122.0366	WOODS COVE CREEK GATE CODE #5251
274	6/13/2012	Melanie Benedetti	LA	Zoecon Altosid Pellets (Water Soluble Pouch)	Methoprene	405	0.045	36.9884	-121.9911	ARANA CK-OAK WY TRIB N OF HWY 1

275	6/13/2012	Jacob Jones	LA	Natular Granule	Spinosad	23232	4.8	36.9091	-121.7862	WEST BRANCH S. HS RD
276	6/13/2012	Jacob Jones	LA	Natular Granule	Spinosad	10890	2.25	36.9006	-121.7881	WATSONVILLE SL. S. LEE RD.
277	6/13/2012	Jacob Jones	LA	Natular Granule	Spinosad	9438	1.95	36.9083	-121.7811	STRUVE SL. N. HIGHWAY 1
278	6/13/2012	Jacob Jones	LA	Natular Granule	Spinosad	21780	4.5	36.9125	-121.7809	STRUVE SL. S. HARKINS SLOUGH RD (MAIN SECTION)
279	6/13/2012	Jacob Jones	LA	Natular Granule	Spinosad	2178	0.45	36.9098	-121.7888	WEST ARM OF WEST BRANCH SLOUGH
280	6/14/2012	Ray Travers	LA	Altosid Residual Briquets	Methoprene	1800	1.44	36.9765	-121.9437	ESCALONA GULCH @ ESCALONA DR
281	6/14/2012	Ray Travers	LA	Altosid Residual Briquets	Methoprene	500	0.4	36.9685	-121.9920	DRAINAGE TO SCHWAN LAKE CENTRAL
282	6/14/2012	Ray Travers	LA	Four Star 180 day Briquets	BTI+BS	1700	1.12	36.9681	-121.9885	NE DRAINAGE INTO SCHWAN LAKE (BEHIND SIMPKINS)
283	6/14/2012	Ray Travers	LA	Zeocon Altosid Briquets	Methoprene	2200	0.27	36.9685	-121.9920	DRAINAGE TO SCHWAN LAKE CENTRAL
284	6/14/2012	Ray Travers	LA	Zeocon Altosid Briquets	Methoprene	10300	1.64	36.9868	-121.9349	DRAINAGE E. OF PARK AVE. (N. OF HWY1)
285	6/14/2012	Melanie Benedetti	LA	Abbot Labs Vectobac Granule	BTI	250	0.1	37.0072	-122.0750	EMPIRE GRADE E. ROADSIDE DITCH
286	6/14/2012	Melanie Benedetti	LA	Abbot Labs Vectobac Granule	BTI	500	0.2	36.9855	-122.6835	UCSC BMP ON EMPIRE GRADE

287	6/14/2012	Melanie Benedetti	LA	Abbot Labs Vectobac Granule	BTI	220	0.08	37.0667	-122.1260	CREEK PAST 203 SUNLIT LANE
288	6/14/2012	Melanie Benedetti	LA	Abbot Labs Vectobac Granule	BTI	25	0.005	37.1147	-122.1509	BRAEMOOR DR. CENTRAL DRAINAGE
289	6/14/2012	Melanie Benedetti	LA	Abbot Labs Vectobac Granule	BTI	125	0.05	37.0679	-122.1279	SUNLIT LANE E. ROADSIDE DITCH
290	6/14/2012	Steve Driscoll	LA	VectoMax Coated Granule	BTI+BS	1200	0.4	36.9375	-121.8079	LV CHANNEL @ BUENA VISTA
291	6/14/2012	Steve Driscoll	LA	VectoMax Coated Granule	BTI+BS	600	0.2	36.9378	-121.8076	BUENA VISTA x LARKIN VALLEY DITCH
292	6/14/2012	Steve Driscoll	LA	VectoMax Coated Granule	BTI+BS	2800	1.2	36.9284	-121.8018	LV CHANNEL N HIWAY 1
293	6/15/2012	Melanie Benedetti	LA	Abbot Labs Vectobac Granule	BTI	800	0.3	36.9655	-122.0096	SOUTH PILKINGTON CK (ON BROOK LN S OF RR)
294	6/15/2012	Melanie Benedetti	LA	Abbot Labs Vectobac Granule	BTI	140	0.06	36.9678	-122.0096	MIDDLE PILKINGTON CK (LOGAN TO RR)
295	6/15/2012	Melanie Benedetti	LA	Abbot Labs Vectobac Granule	BTI	610	0.25	36.9692	-122.0090	NORTH PILKINGTON CK-(LOGAN ST TO 629 SEABRIGHT
296	6/18/2012	Ray Travers	LA	Altosid Residual Briquets	Methoprene	200	0.16	36.9767	-121.9169	R.R. @ SEARIDGE/ MAR VISTA
297	6/18/2012	Ray Travers	LA	Altosid Residual Briquets	Methoprene	500	0.4	36.9736	-121.9751	RODEO GULCH POND @ CAPITOLA RD/30th AVE
298	6/18/2012	Ray Travers	LA	Natular 180 Day Tablet	Spinosad	200	0.176	36.9741	-121.9179	LAS OLAS @ SEACLIFF BEACH

299	6/18/2012	Nader Sidhom	LA	Abbot Labs Vectobac Granule	BTI	900	0.3	37.1218	-122.1237	LAUREL DITCH BELOW BOULDER CK ELEMENTARY
300	6/18/2012	Nader Sidhom	LA	Abbot Labs Vectobac Granule	BTI	600	0.2	37.1081	-122.1049	OLD RIVER LN DITCH
301	6/18/2012	Nader Sidhom	LA	Zeocon Altosid Single Brood Granule	Methoprene	600	0.15	37.1081	-122.1049	OLD RIVER LN DITCH
302	6/18/2012	Nader Sidhom	LA	Zeocon Altosid Single Brood Granule	Methoprene	900	0.2	37.1218	-122.1237	LAUREL DITCH BELOW BOULDER CK ELEMENTARY
303	6/19/2012	Helicopter	LA	Altosid Extended Residual Granule	Methoprene	435600	150	36.9180	-121.7629	925 FREEDOM BLVD (WEIR SOUTH END @ WILLOWS)
304	6/19/2012	Helicopter	LA	Altosid Extended Residual Granule	Methoprene	87000	30	36.9311	-121.7623	BREWINGTON CHECK POND
305	6/19/2012	Helicopter	LA	Altosid Extended Residual Granule	Methoprene	871200	300	36.9027	-121.7845	STRUVE SL S. LEE RD
306	6/19/2012	Helicopter	LA	Altosid Extended Residual Granule	Methoprene	43560	15	36.9627	-121.7621	AMADOR POND
307	6/19/2012	Helicopter	LA	VectoMax Coated Granule	BTI+BS	871200	300	36.9027	-121.7845	STRUVE SL S. LEE RD
308	6/19/2012	Helicopter	LA	VectoMax Coated Granule	BTI+BS	435600	150	36.9180	-121.7629	925 FREEDOM BLVD (WEIR SOUTH END @ WILLOWS)
309	6/19/2012	Helicopter	LA	VectoMax Coated Granule	BTI+BS	348480	120	36.9227	-121.8050	HARKINS SL S RAMPART- IN AG FIELDS
310	6/19/2012	Helicopter	LA	VectoMax Coated Granule	BTI+BS	87000	30	36.9311	-121.7623	BREWINGTON CHECK POND

311	6/19/2012	Helicopter	LA	VectoMax Coated Granule	BTI+BS	43560	15	36.9627	-121.7621	AMADOR POND
312	6/19/2012	Ray Travers	LA	Abbot Labs Vectobac Granule	BTI	2444	1	36.9736	-121.9751	RODEO GULCH POND @ CAPITOLA RD/30th AVE
313	6/20/2012	Ray Travers	LA	Abbot Labs Vectobac Granule	BTI	1222	0.5	36.9939	-121.9608	SOQUEL HIGH SCHOOL BASEBALL FIELD DRAINAGE
314	6/20/2012	Ray Travers	LA	Abbot Labs Vectobac Granule	BTI	2444	1	36.9716	-121.9754	RODEO GULCH BTW CAPITOLA RD/BROMMER ST
315	6/20/2012	Nader Sidhom	LA	Abbot Labs Vectobac Granule	BTI	600	0.2	37.1012	-122.0327	Zayante 0.3 miles past Westwood Rd.
316	6/20/2012	Steve Driscoll	LA	Clarke Co. Golden Bear 1111	PD	1200	0.12	36.9679	-121.7726	KLIEWER RD DITCHES
317	6/21/2012	Melanie Benedetti	LA	Four Star 45 Day Briquets	BTI+BS	800	0.176	36.9816	-121.9929	UPPER W HAGEMANN CK (ENT @ 101
318	6/22/2012	Ray Travers	LA	Zeocon Altosid Briquets	Methoprene	300	0.048	36.9807	-121.9726	RODEO GULCH BTW SOQUEL AVE/COFFEY LN
319	6/22/2012	Nader Sidhom	LA	Abbot Labs Vectobac Granule	BTI	1200	0.5	37.1546	-122.1335	Channel at HWY 9 and Pool by Mountan Store,
320	6/22/2012	Nader Sidhom	LA	Abbot Labs Vectobac Granule	BTI	10	0.004	37.1574	-122.1287	KINGS HWY X MEADOW DITCHES
321	6/22/2012	Nader Sidhom	LA	Zeocon Altosid Single Brood Granule	Methoprene	10	0.004	37.1574	-122.1287	KINGS HWY X MEADOW DITCHES
322	6/22/2012	Nader Sidhom	LA	Zeocon Altosid Single Brood Granule	Methoprene	600	0.2	37.1546	-122.1335	Channel at HWY 9 and Pool by Mountan Store,

323	6/25/2012	Ray Travers	LA	Zeocon Altosid Briquets	Methoprene	200	0.032	36.9766	-121.9747	RODEO GULCH BTW COFFEY LN/CAPITOLA RD
324	6/27/2012	Nader Sidhom	LA	Natular Granule	Spinosad	6900	1.4	37.0697	-122.0055	SVHS RP ON GLENWOOD
325	6/27/2012	Nader Sidhom	LA	Altosid Residual Briquets	Methoprene	300	0.48	37.1257	-122.1191	SLR @ LOMOND ST (BOULDER CK CITY)
326	6/27/2012	Melanie Benedetti	LA	Abbot Labs Vectobac Granule	BTI	100	0.03	36.9921	-122.0128	BRANCIFORTE CK @ ISBEL DR
327	6/27/2012	Melanie Benedetti	LA	Abbot Labs Vectobac Granule	BTI	125	0.05	37.0008	-122.0022	BRANCIFORTE CK @ LOWER DELAVEAGA PARK ENTRANCE
328	6/27/2012	Melanie Benedetti	LA	Agnique Monomolecular Film	MMF	170	0.0039	36.9921	-122.0128	BRANCIFORTE CK @ ISBEL DR
329	6/27/2012	Melanie Benedetti	LA	Four Star 45 Day Briquets	BTI+BS	100	0.022	36.9921	-122.0128	BRANCIFORTE CK @ ISBEL DR
330	6/27/2012	Melanie Benedetti	LA	Four Star 45 Day Briquets	BTI+BS	100	0.022	36.9746	-122.0014	LOWER HAGEMANN CREEK @ UPPER HARBOR
331	6/29/2012	Ray Travers	LA	Altosid Residual Briquets	Methoprene	100	0.08	36.9624	-121.9804	2380 PORTOLA DR
332	6/29/2012	Nader Sidhom	LA	Zoecon Altosid Pellets (Water Soluble Pouch)	Methoprene	80	0.015	36.9595	-122.0598	MOORE CREEK- BTW MISSION ST. & ANTONELLI'S POND
333	6/29/2012	Nader Sidhom	LA	Zoecon Altosid Pellets (Water Soluble Pouch)	Methoprene	25	0.03	36.9608	-122.0608	MOORE CREEK - BTW HWY 1 & MISSION ST.
334	6/29/2012	Nader Sidhom	LA	Zoecon Altosid Pellets (Water Soluble Pouch)	Methoprene	100	0.015	36.9637	-122.0599	MOORE CREEK- N OF HWY 1

335	7/3/2012	Ray Travers	LA	Abbot Labs Vectobac Granule	BTI	611	0.25	36.9685	-121.9920	DRAINAGE TO SCHWAN LAKE CENTRAL
336	7/3/2012	Ray Travers	LA	Abbot Labs Vectobac Granule	BTI	4888	2	36.9652	-121.9765	RODEO GULCH BTW RR / PORTOLA DR.
337	7/3/2012	Ray Travers	LA	Zeocon Altosid Briquets	Methoprene	900	0.144	36.9685	-121.9920	DRAINAGE TO SCHWAN LAKE CENTRAL
338	7/3/2012	Ray Travers	LA	Zeocon Altosid Single Brood Granule	Methoprene	4888	2	36.9652	-121.9765	RODEO GULCH BTW RR / PORTOLA DR.
339	7/3/2012	Steve Driscoll	LA	Natular Granule	Spinosad	300000	120	36.9600	-121.7714	PINTO LAKE
340	7/6/2012	Ray Travers	LA	Abbot Labs Vectobac Granule	BTI	1222	0.5	36.9870	-121.9891	HARBOR HIGH POND E. OF TENNIS COURTS
341	7/6/2012	Ray Travers	LA	Zeocon Altosid Briquets	Methoprene	1500	0.24	36.9790	-121.9389	N.B. ST. BEACH PARKING LOT
342	7/6/2012	2Ray Travers	LA	Aquabac (200 G)	BTI	1500	0.08	36.9859	-122.0364	ARROYO DE SAN PEDRO-UPS & PLANTRONICS
343	7/9/2012	Ray Travers	LA	Abbot Labs Vectobac Granule	BTI	4888	2	36.9967	-121.9804	ARANA GULCH TRIB. @ PAUL SWEET &
344	7/9/2012	Ray Travers	LA	Zeocon Altosid Briquets	Methoprene	700	0.112	36.9967	-121.9804	ARANA GULCH TRIB. @ PAUL SWEET &
345	7/9/2012	Ray Travers	LA	Zeocon Altosid Briquets	Methoprene	1300	0.208	36.9794	-121.9950	ARANA CK TRIB/ MARSH BEHIND OFFICE
346	7/9/2012	Ray Travers	LA	Zoecon Altosid Pellets (Water Soluble Pouch)	Methoprene	5805	0.645	36.9967	-121.9804	ARANA GULCH TRIB. @ PAUL SWEET &

347	7/9/2012	Nader Sidhom	LA	Zeocon Altosid Pellets	Methoprene	10	0.003	37.1458	-122.1580	16115 JAMISON CREEK, BIG BASIN FIRE PROTECTION
348	7/9/2012	Melanie Benedetti	LA	Abbot Labs Vectobac Granule	BTI	250	0.1	36.9692	-122.0127	OCEAN VILLA CK-SLR TO PINE ST.
349	7/9/2012	Melanie Benedetti	LA	Four Star 45 Day Briquets	BTI+BS	100	0.022	36.9703	-122.0150	JESSIE MARSH
350	7/9/2012	Melanie Benedetti	LA	VectoMax Water Soluble Pouch	BTI+BS	150	0.066	36.9746	-122.0014	LOWER HAGEMANN CREEK @ UPPER HARBOR
351	7/10/2012	Ray Travers	LA	Abbot Labs Vectobac Granule	BTI	1833	0.75	36.9765	-121.9437	ESCALONA GULCH @ ESCALONA DR
352	7/10/2012	Ray Travers	LA	Abbot Labs Vectobac Granule	BTI	7332	3	36.9868	-121.9349	DRAINAGE E. OF PARK AVE. (N. OF HWY1)
353	7/10/2012	Ray Travers	LA	Abbot Labs Vectobac Granule	BTI	4888	2	36.9785	-121.9840	LEONA CK BTW WEBSTER ST/15th AVE
354	7/10/2012	Ray Travers	LA	Altosid Residual Briquets	Methoprene	1500	1.2	36.9785	-121.9840	LEONA CK BTW WEBSTER ST/15th AVE
355	7/10/2012	Ray Travers	LA	Zeocon Altosid Single Brood Granule	Methoprene	2444	1	36.9766	-121.9747	RODEO GULCH BTW COFFEY LN/CAPITOLA RD
356	7/10/2012	Nader Sidhom	LA	Abbot Labs Vectobac Granule	BTI	300	0.1	37.1012	-122.0327	Zayante 0.3 miles past Westwood Rd.
357	7/10/2012	Nader Sidhom	LA	Zeocon Altosid Single Brood Granule	Methoprene	300	0.1	37.1012	-122.0327	Zayante 0.3 miles past Westwood Rd.
358	7/10/2012	Melanie Benedetti	LA	Abbot Labs Vectobac Granule	BTI	125	0.05	36.9820	-122.0343	EVERGREEN ST. HARVEY WEST BASEBALL FIELD

359	7/10/2012	Melanie Benedetti	LA	Abbot Labs Vectobac Granule	BTI	125	0.05	36.9842	-122.0365	ARROYO DE SAN PEDRO-HARVEY WEST BLVD.@
360	7/10/2012	Melanie Benedetti	LA	Abbot Labs Vectobac Granule	BTI	22	0.01	36.9847	-122.0393	ARROYO DE SAN PEDRO-HARVEY WEST BLVD.@
361	7/10/2012	Steve Driscoll	LA	Altosid Residual Briquets	Methoprene	200	0.16	36.9600	-121.7736	NW FINGER PINTO LAKE @ BUILDING
362	7/10/2012	Steve Driscoll	LA	Four Star 45 Day Briquets	BTI+BS	800	0.308	36.9631	-121.8875	DRY CREEK @ SUMNER
363	7/10/2012	Jacob Jones	LA	Natular Granule	Spinosad	100	0.02	36.9223	-121.7640	WAT SL S MARIN
364	7/11/2012	Ray Travers	LA	Abbot Labs Vectobac Granule	BTI	4888	2	36.9681	-121.9885	NE DRAINAGE INTO SCHWAN LAKE (BEHIND SIMPKINS)
365	7/11/2012	Ray Travers	LA	Zeocon Altosid Briquets	Methoprene	700	0.112	36.9835	-121.9832	LEONA CREEK BTW HWY 1 / RODRIGUEZ (VISTA
366	7/11/2012	Ray Travers	LA	Zoecon Altosid Pellets (Water Soluble Pouch)	Methoprene	2025	0.225	36.9939	-121.9608	SOQUEL HIGH SCHOOL BASEBALL FIELD DRAINAGE
367	7/11/2012	Ray Travers	LA	Zoecon Altosid Pellets (Water Soluble Pouch)	Methoprene	2295	0.255	36.9925	-121.9216	RIPARIAN WETLAND @ CABRILLO COLLEGE
368	7/11/2012	Steve Driscoll	LA	VectoMax Coated Granule	BTI+BS	15000	6	36.9685	-121.7771	#4 PIONEER ORGANIC FARM POND LARGEST
369	7/11/2012	Steve Driscoll	LA	VectoMax Coated Granule	BTI+BS	1500	0.6	36.9679	-121.7726	KLIEWER RD DITCHES
370	7/11/2012	Steve Driscoll	LA	VectoMax Coated Granule	BTI+BS	3000	1.2	36.9682	-121.7704	933 GREEN VALLEY RD POND -- KLEIWER RD

371	7/11/2012	Jacob Jones	LA	VectoMax Coated Granule	BTI+BS	8712	3.5	36.9055	-121.7736	OHLONE BMP @ SANTA CATALINA
372	7/12/2012	Steve Driscoll	LA	VectoMax Coated Granule	BTI+BS	3000	1.2	36.9744	-121.7606	Zoecon Altosid Pellets (Water Soluble Pouch)EN
373	7/12/2012	Steve Driscoll	LA	Zoecon Altosid Pellets (Water Soluble Pouch)	Methoprene	500	0.09	36.9854	-121.8368	CABRILLO SAND & GRAVEL PONDS
374	7/12/2012	Steve Driscoll	LA	Zoecon Altosid Pellets (Water Soluble Pouch)	Methoprene	300	0.06	36.9787	-121.8619	APTOS HS WATER TANKS
375	7/12/2012	Jacob Jones	LA	VectoMax Coated Granule	BTI+BS	2100	1	36.9213	-121.7793	OAKRIDGE PEACE CK S. PED PATH
376	7/12/2012	Jacob Jones	LA	VectoMax Coated Granule	BTI+BS	2178	1	36.9235	-121.7798	OAKRIDGE PEACE CK N. PED PATH
377	7/13/2012	Ray Travers	LA	Altosid Residual Briquets	Methoprene	3200	2.56	36.9785	-121.9840	LEONA CK BTW WEBSTER ST/15th AVE
378	7/13/2012	Ray Travers	LA	Four Star 45 Day Briquets	BTI+BS	2300	0.506	36.9681	-121.9885	NE DRAINAGE INTO SCHWAN LAKE (BEHIND SIMPKINS)
379	7/13/2012	Steve Driscoll	LA	Zeocon Altosid Briquets	Methoprene	900	0.192	36.9669	-121.7388	ROSE MARSH ABOVE RESERVOIR
380	7/13/2012	Steve Driscoll	LA	Zeocon Altosid Briquets	Methoprene	250	0.048	36.9658	-121.7407	ROSE RESERVOIR CREEK
381	7/13/2012	Steve Driscoll	LA	Zeocon Altosid Briquets	Methoprene	80	0.032	36.9426	-121.7969	LYNWOOD PLACE BERRY FIELD

Habitat

channel

channel

channel

channel

channel

channel

channel

channel

pond

channel

channel

channel

channel

channel

channel

channel

channel

channel

pond

channel

channel

pond

channel

channel

channel

pond

channel

channel

pond

channel

pond

channel

channel

channel

channel

channel

lake

pond

channel

channel

pond

channel

channel

pond

pond

channel

pond

pond

pond

channel

channel

channel

channel

channel

channel

pond

lake

pond

pond

channel

pond

channel

pond

channel

channel

channel

channel

channel

channel

channel

channel

channel

channel

channel

channel

channel

channel

pond

lake

pond

open waterway

open waterway

channel

pond

channel

pond

channel

channel

pond

pond

channel

channel

channel

pond

channel

channel

pond

channel

pond

pond

channel

channel

pond

pond

channel

pond

channel

channel

channel

pond

channel

channel

pond

pond

pond

pond

channel

channel

pond

channel

pond

pond

channel

pond

channel

channel

channel

pond

pond

pond

channel

pond

pond

channel

pond

pond

channel

channel

pond

channel

pond

channel

pond

channel

pond

pond

channel

channel

channel

channel

channel

lake

channel

channel

channel

channel

channel

channel

channel

pond

pond

channel

channel

pond

pond

pond

pond

pond

channel

channel

channel

channel

channel

channel

channel

channel

channel

channel

lake

channel

channel

channel

channel

channel

channel

channel

channel

channel

channel

channel

channel

channel

pond

channel

channel

pond

channel

channel

channel

channel

channel

channel

pond

channel

channel

pond

channel

channel

pond

channel

channel

pond

channel

channel

channel

pond

channel

channel

channel

channel

channel

channel

channel

channel

channel

channel

channel

channel

channel

channel

channel

channel

channel

channel

channel

channel

channel

channel

channel

channel

pond

channel

channel

channel

channel

channel

channel

channel

pond

channel

lake

channel

channel

channel

channel

channel

channel

channel

channel

channel

lake

lake

channel

channel

channel

channel

pond

pond

pond

channel

channel

channel

channel

channel

channel

channel

channel

channel

channel

channel

channel

channel

lake

channel

channel

channel

channel

channel

channel

channel

channel

channel

channel

channel

channel

channel

pond

pond

channel

channel

channel

channel

pond

pond

channel

pond

channel

pond

channel

pond

pond

pond

channel

channel

channel

channel

channel

channel

channel

channel

channel

channel

channel

pond

channel

channel

channel

channel

channel

channel

channel

channel

channel

channel

lake

channel

channel

channel

lake

pond

channel

channel

channel

channel

pond

channel

channel

channel

channel

channel

channel

channel

channel

channel

channel

channel

channel

channel

channel

channel

lake

channel

channel

channel

channel

channel

pond

pond

channel

pond

pond

pond

pond

pond

channel

channel

channel

channel

pond

pond

pond

Agency: Santa Cruz County Mosquito and Vectc

ATTACHMENT C - MONITORING DATABASE FORM

Application Info

Date of Application	Applicator	Location
01/04/2012	Melanie Benedetti	36.990017 -121.98853
01/04/2012	Melanie Benedetti	36.990017 -121.98853
01/04/2012	Melanie Benedetti	36.990017 -121.98853
01/05/2012	Steven Driscoll	36.963888 -121.7905
01/05/2012	Steven Driscoll	36.963888 -121.7905
01/05/2012	Steven Driscoll	36.963888 -121.7905
01/05/2012	Ray Travers	36.9845316047 -121.93607831
01/05/2012	Ray Travers	36.9845316047-121.93607831
01/05/2012	Ray Travers	36.9845316047 -121.93607831
01/12/2012	Jacob M. Jones	36.8839N-121.7920
01/12/2012	Jacob M. Jones	36.8839N-121.7920
01/12/2012	Jacob M. Jones	36.8839N-121.7920
01/13/2012	Nader Sidhom	36.960811 -122.060794
01/13/2012	Nader Sidhom	36.960811 -122.060794
01/17/2012	Nader Sidhom	36.960811 -122.060794
01/24/2012	Jacob M. Jones	36.8970N-121.8050
01/24/2012	Jacob M. Jones	36.8970N-121.8050
01/24/2012	Jacob M. Jones	36.8970N-121.8050
02/02/2012	Ray Travers	36.9792625205-121.97357743
02/02/2012	Ray Travers	36.9792625205-121.97357743
02/02/2012	Ray Travers	36.9792625205-121.97357743
02/06/2012	Jacob M. Jones	Mannfree Drainage
02/06/2012	Jacob M. Jones	Mannfree Drainage
02/06/2012	Jacob M. Jones	Mannfree Drainage
02/08/2012	Steven Driscoll	36.985350 -121.8367
02/08/2012	Steven Driscoll	36.985350 -121.8367
02/14/2012	Steven Driscoll	36.985350 -121.8367
02/15/2012	Melanie Benedetti	36.960811 -122.060794
02/15/2012	Melanie Benedetti	36.960811 -122.060794
02/15/2012	Melanie Benedetti	36.960811 -122.060794
02/22/2012	Steven Driscoll	36.95000 -121.877583
02/22/2012	Steven Driscoll	36.95000 -121.877583
02/22/2012	Steven Driscoll	36.95000 -121.877583
02/24/2012	Melanie Benedetti	36.974744 -121.998
02/24/2012	Melanie Benedetti	36.974744 -121.998
02/24/2012	Melanie Benedetti	36.974744 -121.998
02/24/2012	Melanie Benedetti	36.98583 -122.062269
02/24/2012	Melanie Benedetti	36.98583 -122.062269
02/24/2012	Melanie Benedetti	36.98583 -122.062269
02/28/2012	Ray Travers	36.97413611 -121.91788
02/28/2012	Ray Travers	36.97413611-121.91788

04/18/2012	Jacob M. Jones	36.9173N-121.7623W
04/18/2012	Jacob M. Jones	36.9173N-121.7623W
04/18/2012	Jacob M. Jones	36.9173N-121.7623W
04/19/2012	Ray Travers	36.98704722-121.989111
04/19/2012	Ray Travers	36.98704722 -121.989111
04/19/2012	Ray Travers	36.98704722 -121.989111
04/19/2012	Melanie Benedetti	36.962442 -122.028253
04/19/2012	Melanie Benedetti	36.962442 -122.028253
04/19/2012	Melanie Benedetti	36.962442 -122.028253
04/23/2012	Melanie Benedetti	36.974744 -121.998
04/23/2012	Melanie Benedetti	36.974744 -121.998
04/23/2012	Melanie Benedetti	36.974744 -121.998
04/25/2012	Steven Driscoll	36.966125 -121.740111
04/25/2012	Steven Driscoll	36.966125 -121.740111
04/25/2012	Steven Driscoll	36.966125 -121.740111
04/26/2012	Jacob M. Jones	36.9101-121.7783
04/26/2012	Jacob M. Jones	36.9101-121.7783
04/26/2012	Jacob M. Jones	36.9101-121.7783
04/30/2012	Melanie Benedetti	37.005052 -122.038797
04/30/2012	Melanie Benedetti	37.005052 -122.038797
04/30/2012	Melanie Benedetti	37.005052 -122.038797
04/30/2012	Jacob M. Jones	36.9179-121.7642
04/30/2012	Jacob M. Jones	36.9179-121.7642
04/30/2012	Jacob M. Jones	36.9179-121.7642
05/14/2012	Steven Driscoll	36.972502-121.8802777
05/14/2012	Steven Driscoll	36.972502-121.8802777
05/14/2012	Steven Driscoll	36.972502-121.8802777
05/14/2012	Jacob M. Jones	36.9173-121.8045
05/14/2012	Jacob M. Jones	36.9173 -121.8045
05/14/2012	Jacob M. Jones	36.9173 -121.7642
05/14/2012	Jacob M. Jones	36.9173 -121.7642
05/14/2012	Jacob M. Jones	36.9173 -121.7642
05/14/2012	Jacob M. Jones	36.9173- 121.8045
05/17/2012	Nader Sidhom	37.125673-122.119060
05/17/2012	Nader Sidhom	37.125673-122.119060
05/17/2012	Nader Sidhom	37.125673-122.119060
05/18/2012	Jacob M. Jones	36.9300N-121.8381
05/18/2012	Jacob M. Jones	36.9300N-121.8381
05/18/2012	Jacob M. Jones	36.9300N-121.8381
05/21/2012	Jacob M. Jones	36.8957N-121.8066
05/21/2012	Jacob M. Jones	36.8957N-121.8066
05/21/2012	Jacob M. Jones	36.8957N-121.8066
05/22/2012	Ray Travers	36.96813 -121.9885
05/22/2012	Ray Travers	36.96813 -121.9885
05/22/2012	Ray Travers	36.96813 -121.9885
05/22/2012	Ray Travers	36.987155 -121.945416
05/22/2012	Ray Travers	36.987155 -121.945416
05/22/2012	Ray Travers	36.987155 -121.945416
05/23/2012	Jacob M. Jones	36.9358N-121.7760
05/23/2012	Jacob M. Jones	36.9358N-121.7760
05/23/2012	Jacob M. Jones	36.9358N-121.7760
06/07/2012	Steven Driscoll	36.959988-121.7713888

06/07/2012	Steven Driscoll	36.959988-121.7713888
06/13/2012	Steven Driscoll	36.959988-121.7713888
07/03/2012	Steven Driscoll	36.955589 121.771487
07/03/2012	Steven Driscoll	36.955589 lon 121-771487 lat
07/03/2012	Steven Driscoll	36.955589 lon 121-771487 lat
07/03/2012	Ray Travers	36.965219 -121.9764732
07/03/2012	Ray Travers	36.965219 -121.9764732
07/03/2012	Ray Travers	36.965219 -121.9764732
07/09/2012	Nader Sidhom	37.167924N-122.215194
07/09/2012	Nader Sidhom	37.167924N-122.215194
07/09/2012	Nader Sidhom	37.167924N-122.215194
07/10/2012	Nader Sidhom	37.10122-122.032747
07/10/2012	Nader Sidhom	37.10122-122.032747
07/10/2012	Nader Sidhom	37.10122-122.032747
07/18/2012	Nader Sidhom	37.154617-122.133470
07/18/2012	Nader Sidhom	37.154617-122.133470
07/18/2012	Nader Sidhom	37.154617-122.133470

or Control

Name of Water Body	Type of Water Body	Description	Type of pesticide
Brookwood Dr. Tributary to Arana Creek	Channel		Larvicide
Brookwood Dr. Tributary to Arana Creek	Channel		Larvicide
Brookwood Dr. Tributary to Arana Creek	Channel		Larvicide
aldrige ln. ditch	Channel		Larvicide
aldrige ln. ditch	Channel		Larvicide
aldrige ln. ditch	Channel		Larvicide
Park Ave. Drainage N. of Hwy	Channel		Larvicide
Park Ave. Drainage N. of Hwy	Channel		Larvicide
Park Ave. Drainage N. of Hwy	Channel		Larvicide
Watsonville Slough	Channel		Larvicide
Watsonville Slough	Channel		Larvicide
Watsonville Slough	Channel		Larvicide
Moore Creek north of Mission St. Ext.	Pond		Larvicide
Moore Creek north of Mission St. Ext.	Pond		Larvicide
Moore Creek north of Mission St. Ext.	Pond		Larvicide
Harkins Slough	Channel		Larvicide
Harkins Slough	Channel		Larvicide
Harkins Slough	Channel		Larvicide
Rodeo Drain N. of Cap. Rd.	Channel		Larvicide
Rodeo Drain N. of Cap. Rd.	Channel		Larvicide
Rodeo Drain N. of Cap. Rd.	Channel		Larvicide
Harkins Slough	Channel		Larvicide
Harkins Slough	Channel		Larvicide
Harkins Slough	Channel		Larvicide
Cabrillo sand and gravel ponds	Pond		Larvicide
Cabrillo sand and gravel ponds	Pond		Larvicide
Cabrillo sand and gravel ponds	Pond		Larvicide
Moore Creek north of Mission St. Ext.	Pond		Larvicide
Moore Creek north of Mission St. Ext.	Pond		Larvicide
Moore Creek north of Mission St. Ext.	Pond		Larvicide
Seascape Resort ditch	Channel		Larvicide
Seascape Resort ditch	Channel		Larvicide
Seascape Resort ditch	Channel		Larvicide
Arana Gulch Marsh	Pond		Larvicide
Arana Gulch Marsh	Pond		Larvicide
Arana Gulch Marsh	Pond		Larvicide
UCSC Arboretum Pond	Pond		Larvicide
UCSC Arboretum Pond	Pond		Larvicide
UCSC Arboretum Pond	Pond		Larvicide
Las Olas @ Seacliff Beach	Pond		Larvicide
Las Olas @ Seacliff Beach	Pond		Larvicide

Harkins Slough	Channel	Larvicide
Harkins Slough	Channel	Larvicide
Harkins Slough	Channel	Larvicide
Harbor High pond	Pond	Larvicide
Harbor High pond	Pond	Larvicide
Harbor High pond	Pond	Larvicide
Neary Lagoon railroad section	Pond	Larvicide
Neary Lagoon railroad section	Pond	Larvicide
Neary Lagoon railroad section	Pond	Larvicide
Arana Gulch Marsh	Pond	Larvicide
Arana Gulch Marsh	Pond	Larvicide
Arana Gulch Marsh	Pond	Larvicide
Rose Res.	Pond	Larvicide
Rose Res.	Pond	Larvicide
Rose Res.	Pond	Larvicide
Struve Slough	Channel	Larvicide
Struve Slough	Channel	Larvicide
Struve Slough	Channel	Larvicide
Ocean St. Ext. ditches	Channel	Larvicide
Ocean St. Ext. ditches	Channel	Larvicide
Ocean St. Ext. ditches	Channel	Larvicide
Watsonville Slough	Channel	Larvicide
Watsonville Slough	Channel	Larvicide
Watsonville Slough	Channel	Larvicide
600 Hwy. Marsh next to Valencia Lagoon	Channel	Larvicide
600 Hwy. Marsh next to Valencia Lagoon	Channel	Larvicide
600 Hwy. Marsh next to Valencia Lagoon	Channel	Larvicide
Harkins Slough	Channel	Larvicide
Harkins Slough	Channel	Larvicide
Harkins Slough	Channel	Larvicide
Harkins Slough	Channel	Larvicide
Harkins Slough	Channel	Larvicide
Harkins Slough	Channel	Larvicide
San Lorenzo River at Lomond, BC	Channel	Larvicide
San Lorenzo River at Lomond, BC	Channel	Larvicide
San Lorenzo River at Lomond, BC	Channel	Larvicide
Spring Vally Rd Creek	Channel	Larvicide
Spring Vally Rd Creek	Channel	Larvicide
Spring Vally Rd Creek	Channel	Larvicide
Harkins Slough	Channel	Larvicide
Harkins Slough	Channel	Larvicide
Harkins Slough	Channel	Larvicide
Draiage into Schwan Lake	Channel	Larvicide
Draiage into Schwan Lake	Channel	Larvicide
Draiage into Schwan Lake	Channel	Larvicide
Drainage W. of Pepperwood	Channel	Larvicide
Drainage W. of Pepperwood	Channel	Larvicide
Drainage W. of Pepperwood	Channel	Larvicide
Struve Creek	Channel	Larvicide
Struve Creek	Channel	Larvicide
Struve Creek	Channel	Larvicide
Pinto Lake	Lake	Larvicide

Pinto Lake	Lake	Larvicide
Pinto Lake	Lake	Larvicide
Pinto Lake	Lake	Larvicide
Pinto Lake	Lake	Larvicide
Pinto Lake	Lake	Larvicide
Rodeo Drainage N. of Portola	Channel	Larvicide
Rodeo Drainage N. of Portola	Channel	Larvicide
Rodeo Drainage N. of Portola	Channel	Larvicide
Bloom Creek	Channel	Larvicide
Bloom Creek	Channel	Larvicide
Bloom Creek	Channel	Larvicide
Zayante Ditch	Channel	Larvicide
Zayante Ditch	Channel	Larvicide
Zayante Ditch	Channel	Larvicide
Hwy 9 ditch at Pool, BC	Channel	Larvicide
Hwy 9 ditch at Pool, BC	Channel	Larvicide
Hwy 9 ditch at Pool, BC	Channel	Larvicide

MONITORING Information

Active ingredient	Product Name	Time of monitoring	Monitoring Date
BTI	Vectobac G	Background	01/03/2012
BTI	Vectobac G	Event	01/05/2012
BTI	Vectobac G	Post-Event	01/11/2012
BTI	Vectobac G	Background	01/05/2012
BTI	Vectobac G	Event	01/05/2012
BTI	Vectobac G	Post-Event	01/11/2012
BTI	Aquabac (Bti)	Background	01/04/2012
BTI	Aquabac (Bti)	Event	01/05/2012
BTI	Aquabac (Bti)	Post-Event	01/10/2012
Spinosad	Natular G	Background	01/12/2012
Spinosad	Natular G	Event	01/12/2012
Spinosad	Natular G	Post-Event	01/19/2012
Spinosad	Natular G	Background	1/12/2012
Spinosad	Natular G	Event	1/13/2012
Spinosad	Natular G	Post-Event	1/17/2012
Spinosad	Natular G	Background	01/24/2012
Spinosad	Natular G	Event	01/24/2012
Spinosad	Natular G	Post-Event	02/02/2012
Methoprene	Altosid (methoprene)	Post-Event	02/23/12
Methoprene	Altosid (methoprene)	Event	02/02/2012
Methoprene	Altosid (methoprene)	Post-Event	02/23/2012
PD	Golden Bear 1111	Background	02/06/2012
PD	Golden Bear 1111	Event	02/06/2012
PD	Golden Bear 1111	Post-Event	02/13/2012
Methoprene	Altosid WSP	Background	02/08/2012
Methoprene	Altosid WSP	Event	02/08/2012
Methoprene	Altosid WSP	Post-Event	02/14/2012
BTI	Vectobac G	Background	02/15/12
BTI	Vectobac G	Event	2/15/2012
BTI	Vectobac G	Post-Event	2/21/2012
BTI	Vectobac G	Background	02/22/2012
BTI	Vectobac G	Event	02/22/2012
BTI	Vectobac G	Post-Event	02/28/2012
BTI	Vectobac G	Background	2/24/12
BTI	Vectobac G	Event	2/24/2012
BTI	Vectobac G	Post-Event	2/28/2012
BTI	Vectobac G	Background	02/24/12
BTI	Vectobac G	Event	2/24/2012
BTI	Vectobac G	Post-Event	2/27/2012
BTI	Aquabac (Bti)	Background	02/28/2012
BTI	Aquabac (Bti)	Event	02/28/2012

BTI	Aquabac (Bti)	Post-Event	03/07/2012
BTI	Vectobac G	Background	03/02/12
BTI	Vectobac G	Event	03/02/2012
BTI	Vectobac G	Post-Event	03/06/2012
MMF	Agnique MMF	Background	03/02/12
MMF	Agnique MMF	Event	03/02/2012
MMF	Agnique MMF	Post-Event	03/06/2012
MMF	Altosid WSP	Background	03/02/2012
MMF	Altosid WSP	Event	03/02/2012
MMF	Altosid WSP	Post-Event	04/10/2012
PD	Golden Bear 1111	Post-Event	03/02/2012
PD	Golden Bear 1111	Background	03/09/2012
PD	Golden Bear 1111	Event	03/09/2012
BTI	Vectobac G	Background	03/05/2012
BTI	Vectobac G	Event	03/05/2012
BTI	Vectobac G	Post-Event	03/12/2012
Methoprene	Altosid WSP	Background	03/05/2012
Methoprene	Altosid WSP	Event	03/05/2012
Methoprene	Altosid WSP	Post-Event	04/10/2012
Spinosad	Natular G	Background	03/05/2012
Spinosad	Natular G	Event	03/05/2012
Spinosad	Natular G	Post-Event	03/13/2012
Methoprene	Altosid WSP	Background	03/06/2012
Methoprene	Altosid WSP	Event	03/06/2012
Methoprene	Altosid WSP	Post-Event	04/13/2012
Methoprene	Altosid WSP	Event	03/21/2012
Methoprene	Altosid WSP	Post-Event	03/27/2012
Methoprene	Altosid WSP	Background	3/21/2012
PD	Golden Bear 1111	Background	03/22/2012
PD	Golden Bear 1111	Event	03/22/2012
PD	Golden Bear 1111	Post-Event	03/29/2012
BTI	Vectobac G	Background	03/21/2012
BTI	Vectobac G	Event	03/22/2012
BTI	Vectobac G	Post-Event	03/28/2012
Spinosad	Natular G	Background	03/23/2012
Spinosad	Natular G	Background	03/23/2012
Spinosad	Natular G	Event	03/23/2012
Spinosad	Natular G	Event	03/23/2012
Spinosad	Natular G	Post-Event	03/30/2012
Spinosad	Natular G	Post-Event	03/30/2012
BTI	Vectobac G	Background	03/28/2012
BTI	Vectobac G	Event	03/29/2012
BTI	Vectobac G	Post-Event	04/05/2012
PD	Golden Bear 1111	Event	04/11/2012
PD	Golden Bear 1111	Post-Event	04/18/2012
PD	Golden Bear 1111	Background	04/22/2012
Methoprene	Altosid Single Brood Granule	Background	04/18/2012
Methoprene	Altosid Single Brood Granule	Event	04/18/2012
Methoprene	Altosid Single Brood Granule	Post-Event	04/27/2012
BS	Vectolex CG	Background	4/18/2012
BS	Vectolex CG	Event	4/18/2012
BS	Vectolex CG	Post-Event	04/25/2012

BTI+BS	Vectomax CG	Post-Event	04/25/2012
BTI+BS	Vectomax CG	Background	4/18/2012
BTI+BS	Vectomax CG	Event	4/18/2012
Methoprene	Altosid (methoprene)	Background	04/19/2012
Methoprene	Altosid (methoprene)	Event	04/19/2012
Methoprene	Altosid (methoprene)	Post-Event	05/14/2012
BTI	Vectobac G	Background	04/19/2012
BTI	Vectobac G	Event	04/19/2012
BTI	Vectobac G	Post-Event	04/25/2012
BTI	Vectobac G	Background	04/23/2012
BTI	Vectobac G	Event	04/23/2012
BTI	Vectobac G	Post-Event	4/26/2012
BTI+BS	Vectomax	Background	04/25/2012
BTI+BS	Vectomax	Event	04/25/2012
BTI+BS	Vectomax	Post-Event	04/30/2012
BTI+BS	Vectomax CG	Event	04/23/2012
BTI+BS	Vectomax CG	Post-Event	05/03/2012
BTI+BS	Vectomax CG	Background	4/26/2012
MMF	Agnique MMF	Background	04/30/2012
MMF	Agnique MMF	Event	05/01/2012
MMF	Agnique MMF	Post-Event	05/07/2012
BTI+BS	Vectomax CG	Background	04/30/2012
BTI+BS	Vectomax CG	Event	04/30/2013
BTI+BS	Vectomax CG	Post-Event	05/07/2012
Methoprene	Zoecon Altosid Briquets	Background	05/14/2012
Methoprene	Zoecon Altosid Briquets	Event	05/14/2012
Methoprene	Zoecon Altosid Briquets	Post-Event	05/22/2012
BTI+BS	Vectomax CG	Background	05/14/2012
BTI+BS	Vectomax CG	Event	04/30/2013
BTI+BS	Vectomax CG	Post-Event	05/21/2012
BTI+BS	Vectomax CG	Background	05/14/2012
BTI+BS	Vectomax CG	Event	05/14/2013
BTI+BS	Vectomax CG	Post-Event	05/21/2012
Methoprene	Altosid Pellets	Background	07/17/12
Methoprene	Altosid Pellets	Event	07/17/12
Methoprene	Altosid Pellets	Post-Event	07/23/12
Spinosad	Natular G	Post-Event	05/25/2012
Spinosad	Natular G	Background	5/18/2012
Spinosad	Natular G	Event	5/18/2012
Methoprene	Zoecon Altosid Briquets	Post-Event	05/26/12
Methoprene	Zoecon Altosid Briquets	Background	05/21/2012
Methoprene	Zoecon Altosid Briquets	Event	05/21/2012
BTI	Vectobac G	Event	07/03//2012
BTI	Vectobac G	Background	07/03/2012
BTI	Vectobac G	Post-Event	07/12/2012
BTI	Vectobac G	Background	05/22/2012
BTI	Vectobac G	Event	05/22/2012
BTI	Vectobac G	Post-Event	06/04/2012
Methoprene	Zoecon Altosid Briquets	Post-Event	05/26/12
Methoprene	Zoecon Altosid Briquets	Background	05/22/2012
Methoprene	Zoecon Altosid Briquets	Event	05/23/2012
Methoprene	Altosid Single Brood Granule	Background	06/07/2012

Methoprene	Altosid Single Brood Granule	Event	06/07/2012
Methoprene	Altosid Single Brood Granule	Post-Event	06/13/2012
Spinosad	Natular G	Background	07/03/2012
Spinosad	Natular G	Event	07/03/2012
Spinosad	Natular G	Post-Event	07/09/2012
BTI	Vectobac G	Background	07/03/2012
BTI	Vectobac G	Event	07/03/2012
BTI	Vectobac G	Post-Event	07/12/2012
BTI+BS	Vectomax CG	Background	08/09/2012
BTI+BS	Vectomax CG	Event	08/09/2012
BTI+BS	Vectomax CG	Post-Event	08/16/2012
Methoprene	Altosid Single Brood Granule	Background	07/10/2012
Methoprene	Altosid Single Brood Granule	Event	07/10/2012
Methoprene	Altosid Single Brood Granule	Post-Event	07/14/2012
Methoprene	Altosid Pellets	Background	07/10/2012
Methoprene	Altosid Pellets	Event	07/18/2012
Methoprene	Altosid Pellets	Post-Event	07/23/2012

Time	Name(s) of personnel	Weather Conditions		
		Overhead Conditions	Precipitation	Wind
2:00	Melanie Benedetti	Clear/sunny	None	Calm
2:30	Melanie Benedetti	Clear/sunny	None	Calm
11:30	Melanie Benedetti	Clear/sunny	None	Calm
1:30 PM	Steven Driscoll	Partly cloudy	None	Calm
1:35 PM	Steven Driscoll	Partly cloudy	None	Calm
10:15 AM	Steven Driscoll	Partly cloudy	None	Calm
2:00PM	Ray Travers	Clear/sunny	None	Light breeze
2:30 PM	Ray Travers	Clear/sunny	None	Light breeze
1:00 PM	Ray Travers	Clear/sunny	None	Light breeze
0930	Jacob M. Jones	Partly cloudy	None	Calm
1100	Jacob M. Jones	Partly cloudy	None	Light breeze
1000	Jacob M. Jones	Clear/sunny	None	Calm
10:30	Melanie Benedetti	Clear/sunny	None	Calm
10:35	Melanie Benedetti	Clear/sunny	None	Calm
3:00	Melanie Benedetti	Clear/sunny	None	Light breeze
0830	Jacob M. Jones	Clear/sunny	None	Light breeze
1000	Jacob M. Jones	Clear/sunny	None	Light breeze
0930	Jacob M. Jones	Clear/sunny	None	Calm
10:00	Ray Travers	Clear/sunny	None	Light breeze
1:30 PM	Ray Travers	Clear/sunny	None	Light breeze
10:00 PM	Ray Travers	Clear/sunny	None	Light breeze
1400	Jacob M. Jones	Clear/sunny	None	Calm
1530	Jacob M. Jones	Clear/sunny	None	Calm
1300	Jacob M. Jones	Clear/sunny	None	Calm
2:15 PM	Steven Driscoll	Clear/sunny	None	Calm
2:30PM	Steven Driscoll	Clear/sunny	None	Calm
10:30 AM	Steven Driscoll	Partly cloudy	None	Calm
1:51	Melanie Benedetti	Clear/sunny	None	Calm
2:52	Melanie Benedetti	Clear/sunny	None	Calm
10:46	Melanie Benedetti	Partly cloudy	None	Light breeze
11:15AM	Steven Driscoll	Clear/sunny	None	Calm
11:20AM	Steven Driscoll	Clear/sunny	None	Calm
2:30PM	Steven Driscoll	Partly cloudy	None	Calm
2:20	Melanie Benedetti	Clear/sunny	None	Light breeze
3:00	Melanie Benedetti	Clear/sunny	None	Light breeze
2:55	Melanie Benedetti	Partly cloudy	None	Gusty
10:59	Melanie Benedetti	Clear/sunny	None	Light breeze
12:30	Melanie Benedetti	Clear/sunny	None	Light breeze
2:00	Melanie Benedetti, St	Partly cloudy	None	Light breeze
1:30 PM	Ray Travers	Clear/sunny	None	Light breeze
1:45PM.	Ray Travers	Clear/sunny	None	Light breeze

2:00PM	Ray Travers	Clear/sunny	None	Light breeze
2:00	Melanie Benedetti	Clear/sunny	None	Light breeze
2:50	Melanie Benedetti	Clear/sunny	None	Light breeze
10:30	Melanie Benedetti	Clear/sunny	None	Gusty
2:45	Melanie Benedetti	Clear/sunny	None	Light breeze
3:10	Melanie Benedetti	Clear/sunny	None	Light breeze
10:30	Melanie Benedetti	Clear/sunny	None	Gusty
1000	Jacob M. Jones	Partly cloudy	None	Calm
1130	Jacob M. Jones	Partly cloudy	None	Calm
1000	Jacob M. Jones	Clear/sunny	None	Light breeze
1300	Jacob M. Jones	Clear/sunny	None	Calm
1000	Jacob M. Jones	Clear/sunny	None	Calm
1100	Jacob M. Jones	Clear/sunny	None	Calm
9:45	Melanie Benedetti	Clear/sunny	None	Gusty
10:55	Melanie Benedetti	Clear/sunny	None	Gusty
9:25	Melanie Benedetti	Partly cloudy	None	Light breeze
1300	Jacob M. Jones	Overcast	None	Calm
1400	Jacob M. Jones	Partly cloudy	None	Calm
0945	Jacob M. Jones	Clear/sunny	None	Calm
0900	Jacob M. Jones	Clear/sunny	None	Calm
1300	Jacob M. Jones	Clear/sunny	None	Calm
1000	Jacob M. Jones	Clear/sunny	None	Light breeze
1045	Jacob M. Jones	Partly cloudy	None	Calm
1130	Jacob M. Jones	Partly cloudy	None	Calm
0945	Jacob M. Jones	Clear/sunny	None	Calm
0920	Nader Sidhom	Overcast	None	Calm
1250	Nader Sidhom	Clear/sunny	None	Calm
0900	Nader Sidhom	Overcast	None	Calm
0900	Jacob M. Jones	Partly cloudy	None	Calm
1030	Jacob M. Jones	Partly cloudy	None	Calm
1300	Jacob M. Jones	Clear/sunny	None	Calm
2:30	Melanie Benedetti	Partly cloudy	None	Gusty
2:29	Melanie Benedetti	Partly cloudy	None	Gusty
1:00	Melanie Benedetti	Partly cloudy	Drizzle	Light breeze
0900	Jacob M. Jones	Clear/sunny	None	Light breeze
1300	Jacob M. Jones	Clear/sunny	None	Light breeze
1030	Jacob M. Jones	Clear/sunny	None	Light breeze
1500	Jacob M. Jones	Clear/sunny	None	Light breeze
0930	Jacob M. Jones	Clear/sunny	None	Calm
1300	Jacob M. Jones	Clear/sunny	None	Calm
11:30	Melanie Benedetti	Partly cloudy	Drizzle	Calm
11:45	Melanie Benedetti	Partly cloudy	None	Calm
3:00	Ray Travers	Clear/sunny	None	Calm
1300	Jacob M. Jones	Clear/sunny	None	Calm
1300	Jacob M. Jones	Clear/sunny	None	Calm
1000	Jacob M. Jones	Clear/sunny	None	Calm
1000	Jacob M. Jones	Partly cloudy	None	Calm
1145	Jacob M. Jones	Partly cloudy	None	Calm
1000	Jacob M. Jones	Clear/sunny	None	Calm
1230	Jacob M. Jones	Clear/sunny	None	Calm
1300	Jacob M. Jones	Clear/sunny	None	Calm
1400	Jacob M. Jones	Clear/sunny	None	Calm

0900	Jacob M. Jones	Clear/sunny	None	Calm
0930	Jacob M. Jones	Clear/sunny	None	Calm
1100	Jacob M. Jones	Clear/sunny	None	Calm
10:00 AM	Ray Travers	Clear/sunny	None	Light breeze
10:30 AM	Ray Travers	Clear/sunny	None	Light breeze
10:00 AM	Ray Travers	Clear/sunny	None	Light breeze
1:30	Melanie Benedetti	Clear/sunny	None	Calm
2:45	Melanie Benedetti	Clear/sunny	None	Calm
11:30	Melanie Benedetti	Overcast	None	Calm
1:00	Melanie Benedetti	Overcast	None	Calm
2:35	Melanie Benedetti	Overcast	None	Calm
9:30	Melanie Benedetti, Ja	Overcast	Drizzle	Calm
10:50AM	Steven Driscoll	Overcast	None	Calm
10:50AM	Steven Driscoll	Overcast	None	Calm
1:30PM	Steven Driscoll	Partly cloudy	None	Calm
1130	Jacob M. Jones	Partly cloudy	None	Calm
0930	Jacob M. Jones	Clear/sunny	None	Light breeze
1000	Jacob M. Jones	Partly cloudy	None	Calm
2:45	Melanie Benedetti	Partly cloudy	None	Calm
11:30	Melanie Benedetti	Clear/sunny	None	Calm
2:55	Melanie Benedetti	Clear/sunny	None	Gusty
1030	Jacob M. Jones	Partly cloudy	None	Light breeze
1300	Jacob M. Jones	Partly cloudy	None	Calm
1000	Jacob M. Jones	Clear/sunny	None	Calm
11:10AM	Steven Driscoll	Partly cloudy	None	Calm
11:30AM	Steven Driscoll	Partly cloudy	None	Calm
2:15PM	Steven Driscoll	Clear/sunny	None	Calm
1000	Jacob M. Jones	Clear/sunny	None	Calm
1030	Jacob M. Jones	Clear/sunny	None	Calm
1030	Jacob M. Jones	Clear/sunny	None	Calm
1330	Jacob M. Jones	Clear/sunny	None	Calm
1430	Jacob M. Jones	Clear/sunny	None	Calm
1400	Jacob M. Jones	Clear/sunny	None	Calm
1000	Nader Sidhom	Clear/sunny	None	Calm
1015	Nader Sidhom	Clear/sunny	None	Calm
1300	Nader Sidhom	Clear/sunny	None	Calm
1000	Jacob M. Jones	Clear/sunny	None	Light breeze
0930	Jacob M. Jones	Clear/sunny	None	Calm
1330	Jacob M. Jones	Clear/sunny	None	Calm
0945	Jacob M. Jones	Clear/sunny	None	Calm
1000	Jacob M. Jones	Clear/sunny	None	Light breeze
1100	Jacob M. Jones	Clear/sunny	None	Light breeze
11:00 AM	Ray Travers	Clear/sunny	None	Light breeze
10:30 AM	Ray Travers	Clear/sunny	None	Light breeze
12:00 PM	Ray Travers	Clear/sunny	None	Light breeze
9:00 AM	Ray Travers	Clear/sunny	None	Light breeze
10:00 PM	Ray Travers	Clear/sunny	None	Light breeze
11:00 AM	Ray Travers	Clear/sunny	None	Light breeze
1435	Jacob M. Jones	Clear/sunny	None	Calm
1035	Jacob M. Jones	Clear/sunny	None	Light breeze
1000	Jacob M. Jones	Clear/sunny	None	Calm
9:15AM	Steven Driscoll	Clear/sunny	None	Calm

10:00AM	Steven Driscoll	Clear/sunny	None	Calm
12:15PM	Steven Driscoll	Partly cloudy	None	Light breeze
9:30 am	Steven Driscoll	Overcast	None	Calm
11:45	Steven Driscoll	Clear/sunny	None	Calm
1:00pm	Steven Driscoll	Clear/sunny	None	Calm
10:30 AM	Ray Travers	Clear/sunny	None	Calm
11:00 AM	Ray Travers	Clear/sunny	None	Calm
12:00 PM	Ray Travers	Clear/sunny	None	Calm
0900	Nader Sidhom	Clear/sunny	None	Calm
0915	Nader Sidhom	Clear/sunny	None	Calm
1000	Nader Sidhom	Clear/sunny	None	Calm
1400	Nader Sidhom	Clear/sunny	None	Calm
1415	Nader Sidhom	Clear/sunny	None	Calm
1500	Nader Sidhom	Clear/sunny	None	Calm
0900	Nader Sidhom	Clear/sunny	None	Calm
0915	Nader Sidhom	Clear/sunny	None	Calm
1500	Nader Sidhom	Clear/sunny	None	Calm

Visual Observation

Air Temperature	Water Color	Water Clarity	Floating/Suspended Matter	Bottom Deposits	Aquatic Life
Warm/mild	Colorless	Clear	Observed	Observed	Observed
Warm/mild	Colorless	Clear	Observed	Observed	Observed
Warm/mild	Colorless	Clear	Observed	Observed	Observed
Cool	Colorless	Clear	Observed	Observed	Observed
Cool	Colorless	Clear	Observed	Observed	Observed
Cool	Colorless	Clear	Observed	Observed	Observed
Warm/mild	Colorless	Clear	Not Observed	Not Observed	Observed
Warm/mild	Colorless	Clear	Not Observed	Not Observed	Observed
Warm/mild	Colorless	Clear	Not Observed	Not Observed	Observed
Cool	Colorless	Murky	Observed	Not Observed	Observed
Cool	Colorless	Cloudy	Observed	Not Observed	Observed
Warm/mild	Colorless	Cloudy	Observed	Not Observed	Observed
Cool	Brown	Clear	Observed	Observed	Observed
Cool	Brown	Clear	Observed	Observed	Observed
Cool	Brown	Clear	Observed	Observed	Observed
Cool	Colorless	Clear	Not Observed	Not Observed	Observed
Cool	Colorless	Clear	Not Observed	Not Observed	Observed
Cool	Colorless	Clear	Not Observed	Not Observed	Observed
Warm/mild	Yellow	Clear	Not Observed	Observed	Observed
Warm/mild	Colorless	Clear	Not Observed	Not Observed	Observed
Warm/mild	Yellow	Clear	Observed	Not Observed	Observed
Cool	Colorless	Clear	Not Observed	Not Observed	Observed
Cool	Colorless	Clear	Not Observed	Not Observed	Observed
Warm/mild	Colorless	Cloudy	Not Observed	Not Observed	Not Observed
Warm/mild	Brown	Murky	Observed	Not Observed	Observed
Warm/mild	Brown	Murky	Observed	Not Observed	Observed
Cool	Brown	Murky	Observed	Not Observed	Observed
Cool	Brown	Clear	Observed	Observed	Not Observed
Cool	Brown	Clear	Observed	Observed	Not Observed
Cool	Brown	Clear	Observed	Observed	Not Observed
Cool	Colorless	Clear	Not Observed	Not Observed	Observed
Cool	Colorless	Clear	Not Observed	Not Observed	Observed
Cool	Colorless	Clear	Not Observed	Not Observed	Observed
Warm/mild	Green	Clear	Observed	Observed	Not Observed
Warm/mild	Green	Clear	Observed	Observed	Not Observed
Cool	Green	Clear	Observed	Observed	Not Observed
Warm/mild	Brown	Clear	Observed	Observed	Observed
Warm/mild	Brown	Clear	Observed	Observed	Observed
Cool	Brown	Clear	Observed	Observed	Observed
Warm/mild	Colorless	Clear	Not Observed	Observed	Observed
Warm/mild	Colorless	Clear	Not Observed	Observed	Observed

Warm/mild	Green	Cloudy	Observed	Not Observed	Observed
Warm/mild	Green	Cloudy	Observed	Not Observed	Observed
Cool	Green	Cloudy	Observed	Not Observed	Observed
Warm/mild	Green	Cloudy	Observed	Not Observed	Observed
Warm/mild	Green	Cloudy	Observed	Not Observed	Observed
Warm/mild	Colorless	Clear	Observed	Not Observed	Observed
Warm/mild	Colorless	Clear	Observed	Not Observed	Observed
Warm/mild	Colorless	Clear	Observed	Not Observed	Observed
Cool	Brown	Clear	Not Observed	Not Observed	Observed
Cool	Brown	Clear	Not Observed	Not Observed	Not Observed
Cool	Brown	Clear	Not Observed	Not Observed	Not Observed
Warm/mild	Colorless	Clear	Not Observed	Not Observed	Observed
Warm/mild	Colorless	Clear	Not Observed	Not Observed	Observed
Cool	Brown	Clear	Not Observed	Not Observed	Not Observed
Warm/mild	Colorless	Clear	Not Observed	Not Observed	Not Observed
Warm/mild	Colorless	Clear	Not Observed	Not Observed	Not Observed
Cool	Colorless	Clear	Not Observed	Not Observed	Not Observed

Water Surface Oils	Fungi, Slimes or objectionable growths	Potential Nuisance Conditions	Field Measurements		Model	Electrical conductivity (EC)
			Water Temperature			
Flecks	Not Observed	None		Field Inst./		
Flecks	Not Observed	None		Field Inst./		
Flecks	Not Observed	None		Field Inst./		
	Not Observed	None		Field Inst./		
	Not Observed	None		Field Inst./		
	Not Observed	None		Field Inst./		
Films	Not Observed	None		Field Inst./		
Films	Not Observed	None		Field Inst./		
Films	Not Observed	None		Field Inst./		
	Not Observed	None		Field Inst./		
	Not Observed	None		Field Inst./		
	Not Observed	None		Field Inst./		
Flecks	Not Observed	None		Field Inst./		
Flecks	Not Observed	None		Field Inst./		
Flecks	Not Observed	None		Field Inst./		
	Not Observed	None		Field Inst./		
	Not Observed	None		Field Inst./		
	Not Observed	None		Field Inst./		
Films	Not Observed	None		Field Inst./		
Films	Not Observed	None		Field Inst./		
Films	Not Observed	None		Field Inst./		
	Not Observed	None		Field Inst./		
Sheen	Not Observed	None		Field Inst./		
	Not Observed	None		Field Inst./		
	Not Observed	None		Field Inst./		
	Not Observed	None		Field Inst./		
	Not Observed	None		Field Inst./		
None	Not Observed	None		Field Inst./		
None	Not Observed	None		Field Inst./		
Coatings	Not Observed	None		Field Inst./		
None	Not Observed	None		Field Inst./		
None	Not Observed	None		Field Inst./		
None	Not Observed	None		Field Inst./		
None	Not Observed	None		Field Inst./		
None	Not Observed	None		Field Inst./		
None	Not Observed	None		Field Inst./		
None	Not Observed	None		Field Inst./		
None	Not Observed	None		Field Inst./		
None	Not Observed	None		Field Inst./		
Films	Not Observed	None		Field Inst./		
Films	Not Observed	None		Field Inst./		

	Not Observed	None	Field Inst./
	Not Observed	None	Field Inst./
	Not Observed	None	Field Inst./
None	Not Observed	None	Field Inst./
none	Not Observed	None	Field Inst./
none	Not Observed	None	Field Inst./
None Observ	Not Observed	None	Field Inst./
Not observed	Not Observed	None	Field Inst./
Not observed	Not Observed	None	Field Inst./
None observe	Not Observed	None	Field Inst./
None observe	Not Observed	None	Field Inst./
Coatings	Not Observed	None	Field Inst./
Flecks	Not Observed	None	Field Inst./
Flecks	Not Observed	None	Field Inst./
Flecks	Not Observed	None	Field Inst./
	Not Observed	None	Field Inst./
	Not Observed	None	Field Inst./
	Not Observed	None	Field Inst./
Flecks	Not Observed	None	Field Inst./
Flecks	Not Observed	None	Field Inst./
Flecks	Not Observed	None	Field Inst./
Gloss	Not Observed	None	Field Inst./
Gloss	Not Observed	None	Field Inst./
Films	Not Observed	None	Field Inst./
Flecks	Not Observed	None	Field Inst./
Flecks	Not Observed	None	Field Inst./
Flecks	Not Observed	None	Field Inst./
	Not Observed	None	Field Inst./
Flecks	Not Observed	None	Field Inst./
Films	Not Observed	None	Field Inst./
	Not Observed	None	Field Inst./
Flecks	Not Observed	None	Field Inst./
Films	Not Observed	None	Field Inst./
	Not Observed	None	Field Inst./
	Not Observed	None	Field Inst./
	Not Observed	None	Field Inst./
Slick	Not Observed	None	Field Inst./
Films	Not Observed	None	Field Inst./
Films	Not Observed	None	Field Inst./
	Not Observed	None	Field Inst./
Flecks	Not Observed	None	Field Inst./
	Not Observed	None	Field Inst./
none	Not Observed	None	Field Inst./
None	Not Observed	None	Field Inst./
none	Not Observed	None	Field Inst./
None	Not Observed	None	Field Inst./
None	Not Observed	None	Field Inst./
None	Not Observed	None	Field Inst./
	Not Observed	None	Field Inst./
Sheen	Not Observed	None	Field Inst./
Sheen	Not Observed	None	Field Inst./
None	Not Observed	None	Field Inst./

/

/

/

/

/

/

/

/

/

/

/

/

/

/

/

/

/

/

/

/

/

/

/

/

/

/

/

/

/

/

/

/

/

/

/

/

/

/

/

