

**California Department of Transportation
Stormwater Management Program
District 1 Work Plan**

Fiscal Year

2019-2020

CTSW-RT-18-379.06.2



California Department of Transportation
Division of Environmental Analysis
Stormwater Management Program
1656 Union Street, California 95501

<http://www.dot.ca.gov/hq/env/stormwater>

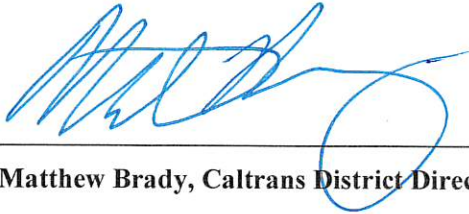
October 1, 2018



For individuals with sensory disabilities, this document is available in alternate formats upon request. Please call or write to the Stormwater Liaison, Caltrans Division of Environmental Analysis, MS-27, P.O. Box 942874, Sacramento, CA 94274-0001, (916) 653-8896 Voice, or dial 711 to use a relay service.

**California Department of Transportation
District 1 Certification
District Work Plan 2019-20**

I certify under penalty of law that this document and all attachments were prepared under my direction or supervision in accordance with a system designed to assure that qualified personnel properly gather and evaluate the information submitted. Based on my inquiry of the person or persons who manage the system, or those persons directly responsible for gathering the information, the information submitted is to the best of my knowledge and belief, true, accurate, and complete. I am aware that there are significant penalties for submitting false information, including the possibility of fine and imprisonment of knowing violations. [40 CFR 122.22(d)]

A handwritten signature in blue ink, appearing to read 'Matthew Brady', is written over a horizontal line.

Matthew Brady, Caltrans District Director

District 1

September 14, 2018

Date

This page was intentionally left blank.

Table of Contents

1	Introduction	1-1
2	District Personnel and Responsibilities	2-3
3	District Facilities and Water Bodies	3-1
4	Drinking Water Reservoirs and Recharge Facilities.....	4-1
5	Slopes Prone to Erosion	5-1
6	Implementation.....	6-1
7	Region-Specific Activities	7-1
8	DWP Noncompliance and Improvements	8-1

Figures

Figure 2-1: District 1 Organizational Chart	2-7
Figure 5-1: District 1 2018 Areas Prone to Erosion.....	5-3

Tables

Table 2-1: District 1 Stormwater Personnel and Responsibilities	2-4
Table 2-2: District 1 Signatory Authority for Key Documents.....	2-5
Table 4-1: District 1 Drinking Water Reservoirs and Recharge Facilities	4-1
Table 5-1: District 1 Inventory of Road Segments Prone to Erosion.....	5-1
Table 6-1: District 1 Anticipated Project Development and Construction Schedule.....	6-3
Table 6-2: District 1 Anticipated Significant Road Maintenance Activities	6-20
Table 6-3: District 1 Monitoring Activities	6-21

This page was intentionally left blank.

General Information about the District Work Plan

The District Work Plans (DWPs) describe the organization of each California Department of Transportation (Caltrans) District's stormwater program and outline the planned stormwater activities for the upcoming fiscal year. They are prepared and submitted on October 1 each year. Since the DWP is District-specific, each Regional Water Quality Control Board (RWQCB or Regional Board) is provided a copy of the DWPs relevant to their jurisdiction.

This DWP presents information about District 1's water bodies, Best Management Practices (BMPs), and monitoring programs. It describes how the District will specifically implement the requirements of the Statewide Stormwater Management Plan (SWMP) during fiscal year 2019-20. Implementation activities will be conducted in accordance with the procedures presented in the SWMP. In addition, this DWP fulfills Provision E.3.b of the *National Pollutant Discharge Elimination System (NPDES) Statewide Storm Water Permit Waste Discharge Requirements (WDRs) for State of California Department of Transportation* (Order Number 2012-0011-DWQ, NPDES Number CAS000003, Effective July 1, 2013) (NPDES Permit). The NPDES Permit was amended by Orders WQ 2014-0006-EXEC (January 17, 2014), WQ 2014-0077-DWQ (May 20, 2014), and WQ 2015-0036-EXEC (April 7, 2015). A conformed NPDES Permit was issued on April 7, 2015 (Conformed NPDES Permit), available on the California State Water Resources Control Board's (SWRCB) website:

http://www.waterboards.ca.gov/board_decisions/adopted_orders/water_quality/2012/wq2012_0011_dwq_conformed_signed.pdf

The NPDES Permit was further amended by Order WQ 2017-0026-EXEC on November 27, 2017. This permit amendment describes the primary modifications to several Areas of Special Biological Significance (ASBS) sampling locations and incorporation of compliance units crediting due to the SWRCB's adoption of the trash provisions on April 7, 2015 (effective on December 3, 2015).

The DWP's eight sections describe how the District plans to implement the stormwater program during the upcoming fiscal year. Section 1 introduces the DWP, describes its organizational structure, and identifies the key goals and commitments made by the District for the upcoming fiscal year. Section 2 describes the personnel with stormwater operations responsibilities in the District. In Section 3, the District's facilities are listed and categorized by type and location. Section 4 describes and identifies the high-risk locations where spills from the District's owned rights-of-way, roadways or facilities can discharge directly to a drinking water reservoir or ground water recharge facility. In Section 5, the District's road segments that are prone to erosion are identified. Section 6 summarizes the District's implementation activities, including projects that will be in the design and construction phases during the fiscal year, maintenance projects, and planned stormwater monitoring activities. Section 7 identifies the planned region-specific activities (if applicable) to address the requirements listed in Attachment V of the Conformed NPDES Permit. Section 8 identifies deviations that occurred from the prior DWP that resulted or will result in noncompliance with the Conformed NPDES Permit or SWMP and describes improvements performed in response to the incidents of noncompliance.

District Goals and Commitments

Caltrans developed the new "Mission, Vision, Goals and Values" in 2014 in response to internal and external reviews. With a greater emphasis on sustainability, livability, reduced pollution in communities, valuing its people, resources and partners, while also making decisions that improve the environment, the storm water program will improve through the implementation of the new Mission, Vision, Goals and Values. The District is also committed to implementing the new Mission, Vision, Goals and Values.

- Mission: Provide a safe, sustainable, integrated and efficient transportation system to enhance California's economy and livability.
- Vision: A performance-driven transparent and accountable organization that values its people, resources and partners, and meets new challenges through leadership, innovation and teamwork.
- Goals:
 - **Safety and Health** – Provide a safe transportation system for workers and users and promote health through active transportation and reduced pollution in communities.
 - **Stewardship and Efficiency** – Money Counts. Responsibly manage California's transportation-related assets.
 - **Sustainability, Livability and Economy** – Make long-lasting, smart mobility decisions that improve the environment, support a vibrant economy, and build communities, not sprawl.
 - **System Performance** – Utilize leadership, collaboration and strategic partnerships to develop an integrated transportation system that provides reliable and accessible mobility for travelers.
 - **Organizational Excellence** – Be a national leader in delivering quality service through excellent employee performance, public communication and accountability.
- Values: Integrity • Commitment • Teamwork • Innovation

2 District Personnel and Responsibilities

Section 2 of the DWP describes positions, addresses, and telephone numbers of personnel with responsibilities for stormwater operations within the District. This section also identifies positions having signatory authority for various notifications or documents required for submittal by a District (e.g., Project Registration Documents, including Notices of Intents or NOIs).

District NPDES Stormwater Coordinator

The District NPDES Stormwater Coordinators serve as liaisons with the Water Quality Program. Liaison activities include the following:

- Conducting meetings related to stormwater management issues with the coordinators from each functional unit and with other municipal separate storm sewer system (MS4) permittees to discuss coordination, problems and concerns.
- Regular communications with representatives of the RWQCB.
- Attending Water Quality Stormwater Advisory Team (WQSWAT) meetings.
- Reviewing project plans and specification during all phases of a project to ensure consistency with Water Quality Program goals and NPDES Permit requirements.

The functional unit coordinators will assist the District Divisions in implementing the Division's stormwater management activities. The District NPDES Stormwater Coordinators also provide coordination with Caltrans' Headquarters functional programs and the Districts.

In addition, the NPDES Stormwater Coordinators have the following responsibilities:

- Serving as the point of contact for regulatory inquiries regarding implementation of the Statewide SWMP.
- Receiving and responding to public inquiries made to the Districts regarding stormwater management issues.
- Coordinating, tracking, and reporting the District's response to illicit connections/illegal discharges (IC/IDs) and non-permitted non-stormwater discharges.
- Reporting instances of noncompliance to the RWQCBs unless otherwise indicated in the DWP.
- Uploading and tracking of projects, SWDRs, and other information within the Caltrans Stormwater Portal.
- Providing technical assistance to District Staff on water quality issues, monitoring, and data analysis.

Maintenance Coordinator

The District Maintenance Stormwater Coordinators serve as point of contact for all Maintenance Stormwater Program inquiries. The following generally describes their responsibilities:

- Reviewing long form Stormwater Data Reports (SWDRs) to ensure compliance with Maintenance requirements and maintainability of stormwater control measures following construction completion.
- Providing information to District Staff regarding the completion and acceptance of permanent treatment BMPs within the District.
- Participating in construction contract acceptance review.

- Conducting Facility Pollution Prevention Plan (FPPP) inspections and preparation of FPPPs.
- Attending Maintenance Stormwater Advisory Team (MSWAT) meetings.

The Maintenance Stormwater Coordinator coordinates with the NPDES Coordinator and reports instances of stormwater discharges from highway facilities to the Regional Board.

Construction Coordinator

The District Construction Stormwater Coordinator serves as point of contact for all Construction Stormwater Program inquiries. The Construction Stormwater Coordinator coordinates with the NPDES Coordinator and reports instances of stormwater discharges from highway facilities to the Regional Board. The Construction Stormwater Coordinator is responsible for conducting inspections to assist the Registered Engineer (RE) in ensuring that stormwater controls are implemented on construction sites and to assist the REs in reviewing SWPPPs/WPCPs for adequacy, as well as uploading and reviewing project information into SMARTS.

Engineering Services (Hydraulics) Representative

The Hydraulics Representative provides assistance with treatment design.

Public Affairs Coordinator

The Public Information Officer is the lead for Public Outreach activities within the District.

Encroachment Permits Coordinator

The District Encroachment Permits Stormwater Coordinator serves as a point of contact for all Encroachment Permits Stormwater Program inquiries. In coordination with the NPDES Coordinator, the Encroachment Permits Stormwater Coordinator reports instances of stormwater discharges from highway facilities to the Regional Board.

Table 2-1 lists staff members responsible for implementing the Stormwater Program.

Table 2-1: District 1 Stormwater Personnel and Responsibilities

Staff Name	Title	Phone No.	E-mail	Responsibility
Kevin Church	Chief, North Region Office of Environmental Engineering – North	(707) 445-5201	kevin.church@dot.ca.gov	Oversees all Office of Environmental Engineering - North employees within District 1.
Samantha Hadden	North Region District 1 NPDES Coordinator	(707) 441-5629	samantha.hadden@dot.ca.gov	Primary contact for all District 1 NPDES stormwater issues.
Alex Arevalo	North Region District 1 NPDES Coordinator	(707) 441-4674	alex.arevalo@dot.ca.gov	Secondary contact for all District 1 NPDES stormwater issues.
Wes Faubel	North Region Design Stormwater Coordinator	(530) 225-3412	wesley.faubel@dot.ca.gov	Assists Design, provides guidance on BMP selection and implementation during design, monitors for compliance with SWMP.
Sheila Sadkowski	North Region Assistant Design Stormwater Coordinator	(707) 445-5277	sheila.sadkowski@dot.ca.gov	Assists Design, provides guidance on BMP selection and implementation during design, monitors for compliance with SWMP.

Staff Name	Title	Phone No.	E-mail	Responsibility
Melissa Ghiglieri	North Region Construction Stormwater Coordinator – West Area	(707) 496-6356	james.mcgee@dot.ca.gov	Assists RE, inspects stormwater controls on construction sites, reviews SWPPPs/WPCPs.
Brett Johnson	District 1 Maintenance Stormwater Coordinator	(707) 441-2014	brett.johnson@dot.ca.gov	Primary contact for Stormwater issues associated with District 1 Maintenance activities.
Sheila Sadkowski (acting)	District 1 Supervising Senior, Hydraulics Engineer	(707) 445- 6556	sebastian.cohen@dot.ca.gov	Supervises Maintenance Stormwater Coordinator, Major Damage Coordinator and Maintenance Hydraulics.
Phlora Barbash	District 1 Landscape Architect	(707) 441-3974	phlora.barbash@dot.ca.gov	Provides erosion control and stormwater treatment designs and specifications.

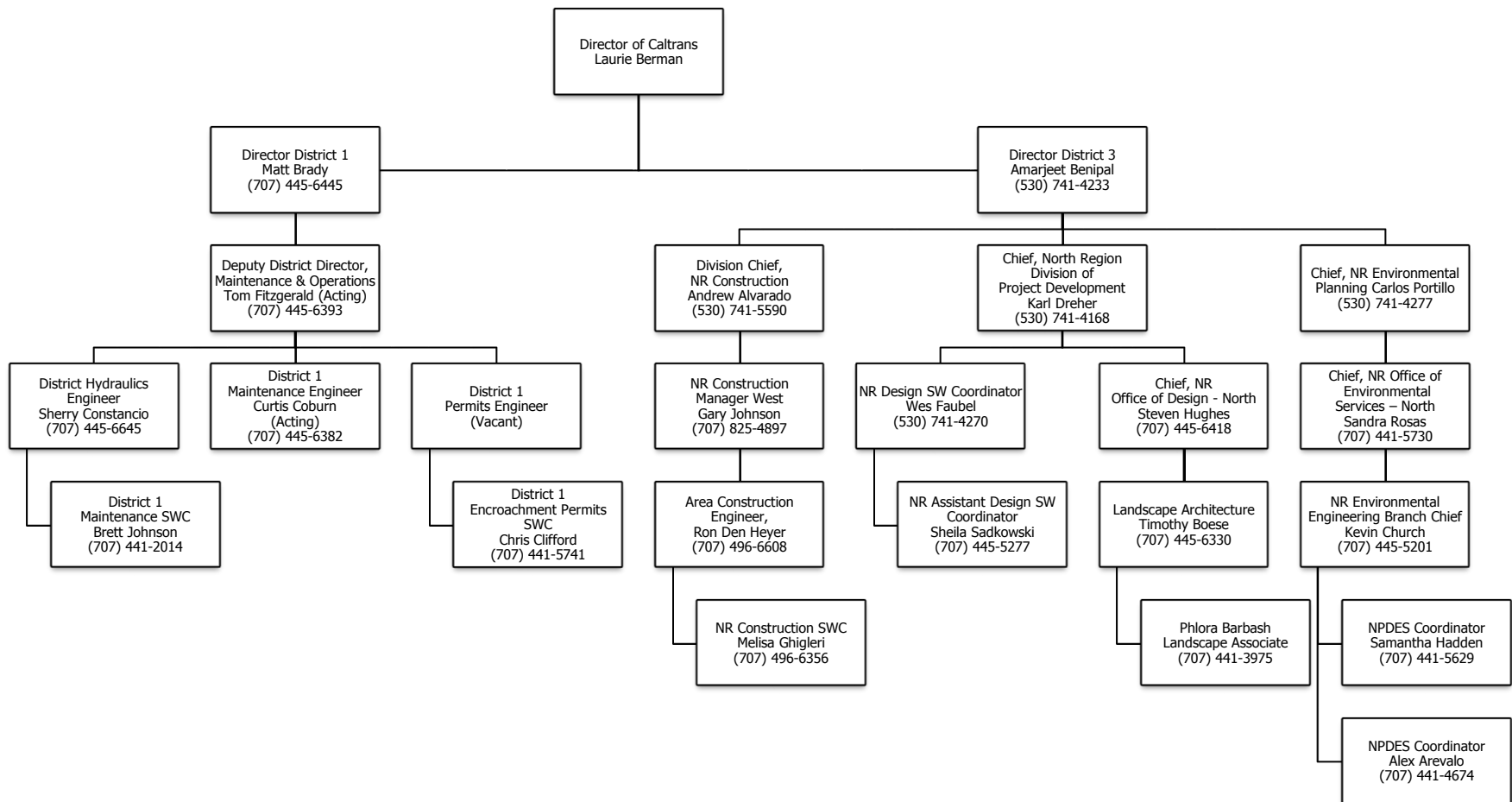
Table 2-2 lists individuals authorized to sign the documents, reports, and other information submitted by the District to either the SWRCB or the RWQCB(s). These individuals/positions may delegate authorization to their staff to sign various documents and reports required for implementation of the Stormwater Program. It also includes delegation of signatory authority for key Conformed NPDES Permit and SWMP required documents.

Table 2-2: District 1 Signatory Authority for Key Documents

Position or Individual	Phone No.	E-mail	Documents Authorized for Signatures
Matt Brady, District 1 Director	(707) 445-6445	matt.brady@dot.ca.gov	All District Documents.
Construction Area Manager, Area Construction Engineers/Resident Engineers	Various	Various	SWPPP, Notice of Intent (NOI), Notice of Termination (NOT), Notice and Non-Compliance Reporting, Discharge or threat of Discharge Notification, Incident Report Form. SMARTS documentation authority for individual projects.
Brett Johnson, District 1 Maintenance Stormwater Coordinator	(707) 441-2014	brett.johnson@dot.ca.gov	Facility Pollution Prevention Plans (FPPP), Storm Water Data Reports (SWDRs).
Samantha Hadden, District 1 NPDES Coordinator	(707) 441-5629	samantha.hadden@dot.ca.gov	Technical Reports on water quality.
District 1 Project Managers	-	-	401 Certification Applications and Requests for Reports of Waste Discharge Requirements.
Sheila Sadkowski, NR Stormwater Design Coordinator, District 1	(707) 445-5277	sheila.sadkaowski@dot.ca.gov	Stormwater Data Reports.

This page was intentionally left blank.

Figure 2-1: District 1 Organizational Chart



This page was intentionally left blank.

3 District Facilities and Water Bodies

Section 3 of the DWP identifies maintenance stations (including crew functions and street addresses), vista points, commercial vehicle enforcement areas, roadside rest areas, park and ride facilities, toll road and bridge plazas, equipment shops, and other Caltrans facilities. Facility Pollution Prevention Plans (FPPPs) are prepared and implemented at Maintenance facilities within the District's boundaries, such as maintenance stations, material storage facilities, and equipment shops. To comply with Department of Homeland Security policy, the table and map identifying these facilities is not available to the public. For more information, contact Caltrans' Office of Emergency Management or Division of Environmental Analysis.

This page was intentionally left blank.

4 Drinking Water Reservoirs and Recharge Facilities

Section 4 of the DWP describes and identifies the high-risk areas, which are locations where spills or other releases from District-owned rights-of-way, roadways, or facilities may discharge directly to municipal or domestic water supply reservoirs or ground water percolation facilities. Projects that potentially drain to these high-risk areas consider project features that enhance spill response.

Drinking water reservoirs and recharge facilities are areas such as locations where spills from District-owned ROWs or facilities can discharge directly to municipal or domestic water supply reservoirs or ground water percolation facilities. To generate the list of municipal, domestic water supply reservoirs, and ground water percolation facilities, the District first contacted known public and private water supply providers. From the information received, the District determined which facilities were susceptible to a direct spill from a District activity or facility. This determination was based on proximity between the water body and the District's facility, use characteristics of the facility, and the probable spill response time.

When planning projects within these defined areas, District 1 considers project design features for aiding in the prevention of accidental spills that could impact the area; these features are typically commensurate with safety improvements for reducing vehicle accidents. Examples of these features may include, but are not limited to, median barrier, guardrail, signalization, and vehicle restrictions. Features considered for improving spill response time typically include elongated drainage paths, call boxes, signage, or video surveillance.

A list of drinking water reservoirs and recharge facilities within District 1 is presented in Table 4-1.

Table 4-1: District 1 Drinking Water Reservoirs and Recharge Facilities

Road Segment/ Facility	County	Regional Board	Drinking Water Reservoir or Recharge Facility Area	Description	Comments
96/0.24	HUM	1	Willow Creek	Water intake for Willow Creek Community Services District	Intake less than 0.1 miles downstream of Bridge No. 04-0135
101/103.66	HUM	1	Savage Creek	Water intake for Seawood Estates and Trinidad Safety Roadside Rest Area	Roadway drains to facility
1/33.6	MEN	1	Greenwood Creek	Water intake for Town of Elk	Intake below Bridge No. 10-0123
101/42.9	MEN	1	Chinquapin Lake Intake	Water for Pine Mountain Mutual Water Company	2 miles to facility
101/42.8	MEN	1	Morris Reservoir	Water for City of Willits	0.8 miles to facility

This page was intentionally left blank.

5 Slopes Prone to Erosion

Section 5 of the DWP identifies the road segments within District 1 that have slopes which are prone to erosion and sediment discharge. The road segments that are located in sensitive watersheds, or where there is an existing or potential threat to water quality, will be prioritized for implementing appropriate controls to the maximum extent practicable. In each Annual Report, the status of stabilization activities where applicable will be reported. Table 5-1 is District 1's inventory of vulnerable road segments where erosion occurs and stabilization may be required, or where rock cut slopes are located and rock falls have occurred.

Table 5-1: District 1 Inventory of Road Segments Prone to Erosion

Road Segment	County	Regional Board	Watershed	Scheduled Stabilization Date
Route 101 PM 21.3-23.1	Del Norte	North Coast Region 1	Lower Smith River	TBD/Ongoing
Route 199 PM 8.2-26.6	Del Norte	North Coast Region 1	Middle Fork Smith River	TBD/Ongoing
Route 199 Post Mile (PM) 20 – 20.75	Del Norte	North Coast Region 1	Lower Middle Fork Smith River	TBD/Ongoing
Route 199 PM 22.5 – 23.1	Del Norte	North Coast Region 1	Lower Middle Fork Smith River	TBD/Ongoing
Route 199 PM 26.5 – 27	Del Norte	North Coast Region 1	Upper Middle Fork Smith River	TBD/Ongoing
Route 199 PM 17 – 18	Del Norte	North Coast Region 1	Lower Middle Fork Smith River	TBD/Ongoing
Route 36 PM 15.5-32	Humboldt	North Coast Region 1	Lower Van Duzen River	TBD/Ongoing
Route 36 PM 31 – 33	Humboldt	North Coast Region 1	Butte Creek, Hoagland Creek-Van Duzen River	TBD/Ongoing
Route 96 PM 10.3 – 10.8	Humboldt	North Coast Region 1	Campbell Creek-Trinity River	TBD/Ongoing
Route 96 PM 17 – 19.5	Humboldt	North Coast Region 1	Deerhorn Creek-Trinity River	TBD/Ongoing
Route 96 PM 23.1 – 36.3	Humboldt	North Coast Region 1	Boise Creek-Klamath River, Slate Creek-Klamath River, Bluff Creek	TBD/Ongoing
Route 96 PM 3 – 8	Humboldt	North Coast Region 1	Campbell Creek-Trinity River	TBD/Ongoing
Route 96 PM 10.4	Humboldt	North Coast Region 1	Campbell Creek-Trinity River	TBD/Ongoing
Route 96 PM 41.5 – 44.5	Humboldt	North Coast Region 1	Boise Creek-Klamath River	TBD/Ongoing
Route 101 PM 0.306 – 4	Humboldt	North Coast Region 1	Fish Creek-South Fork Eel River	TBD/Ongoing
Route 101 PM 9 – 10	Humboldt	North Coast Region 1	Ohman Creek-South Fork Eel River, Lower East Branch South Fork Eel River	TBD/Ongoing
Route 101 PM 7 – 7.5	Humboldt	North Coast Region 1	Fish Creek-South Fork Eel River	TBD/Ongoing
Route 101 PM 40.9 – 41.2	Humboldt	North Coast Region 1	Bear Creek-Eel River	TBD/Ongoing

Table 5-1: District 1 Inventory of Road Segments Prone to Erosion

Road Segment	County	Regional Board	Watershed	Scheduled Stabilization Date
Route 169 PM 14.0 – 31.6	Humboldt	North Coast Region 1	Ah Pah Creek-Klamath River, Pecwan Creek, Mettah Creek-Klamath River, Tully Creek-Klamath River, Slate Creek-Klamath River	PM 33.5-33.8 Stabilized under EA 1-43050; 7/01/2023
Route 254 PM 42 – 43	Humboldt	North Coast Region 1	Bear Creek-Eel River	TBD/Ongoing
Route 299 PM 26-34.8	Humboldt	North Coast Region 1	Willow Creek	TBD/Ongoing
Route 299 PM 34.9	Humboldt	North Coast Region 1	Willow Creek	TBD/Ongoing
Route 299 PM 36.2	Humboldt	North Coast Region 1	Willow Creek	TBD/Ongoing
Route 299 PM 1.5 – 2	Humboldt	North Coast Region 1	Mill Creek-Mad River	TBD/Ongoing
Route 20 PM 0.0-2.0	Lake	Central Valley Region 5	Scotts Creek	TBD/Ongoing
Route 1 PM 38.0-93.0	Mendocino	North Coast Region 1	Alder Creek, Usal Creek, Noyo River, Ten Mile Creek, Pacific Ocean	TBD/Ongoing
Route 20 PM 22.5	Mendocino	North Coast Region 1	North Fork Big River	TBD/Ongoing
Route 20 PM 25.3	Mendocino	North Coast Region 1	Big River	TBD/Ongoing
Route 101 PM 3.92	Mendocino	North Coast Region 1	Upper Russian River	TBD/Ongoing
Route 101 PM 2.75 – 2.8	Mendocino	North Coast Region 1	Cummiskey Creek-Russian River	TBD/Ongoing
Route 101 PM 3.5 – 4	Mendocino	North Coast Region 1	Cummiskey Creek-Russian River	TBD/Ongoing
Route 101 PM 51.5-51.7	Mendocino	North Coast Region 1	Outlet Creek	TBD/Ongoing
Route 101 PM 59.3 – 100	Mendocino	North Coast Region 1	Red Mountain Creek-South Fork Eel River, Cedar Creek-South Fork Eel River, Rattlesnake Creek, Lower Tenmile Creek, Upper Tenmile Creek, Long Valley Creek	TBD/Ongoing
Route 162 PM 9.4-15.65	Mendocino	North Coast Region 1	Lower Middle Fork Eel River	PM 11.5-11.8 Stabilized under EA 1-0B530; 3/01/2024
Route 162 PM 12.92	Mendocino	North Coast Region 1	Division Creek-Eel River	TBD/Ongoing
Route 162 PM 17.25	Mendocino	North Coast Region 1	Goforth Creek-Middle Fork Eel River	TBD/Ongoing
Route 175 PM 2.8-9.37	Mendocino	North Coast Region 1	Upper Russian River	TBD/Ongoing
Route 253 PM 1.75-7.35	Mendocino	North Coast Region 1	Navarro River, Upper Russian River	TBD/Ongoing
Route 253 PM 12 – 14.2	Mendocino	North Coast Region 1	Robinson Creek	TBD/Ongoing
Route 271 PM 0.55	Mendocino	North Coast Region 1	Rattlesnake Creek	TBD/Ongoing

Figure 5-1 is a map showing California State Highway System areas that required maintenance within District 1 in 2018, including rock cut slopes, landslides, and moderate soil erosion.

District 1

California State Highway System 2018 Areas Prone to Erosion

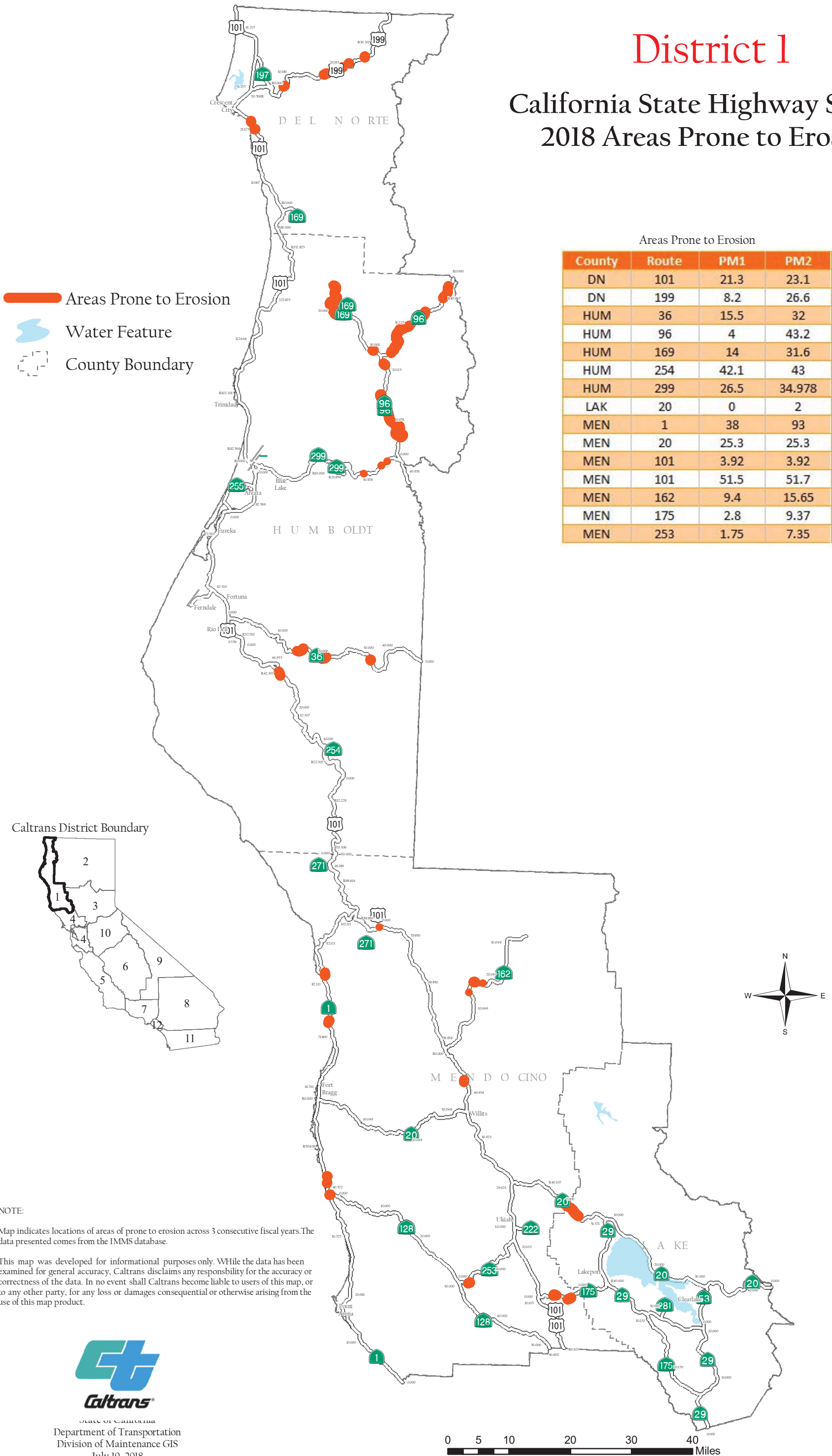


Figure 5-1

This page was intentionally left blank.

6 Implementation

Section 6 of the DWP identifies the specific projects in which work is planned during the fiscal year within the Project Approval/Environmental Document (PA/ED), Plans, Specifications, and Estimates (PS&E), and Construction development phases. The anticipated schedule of construction and maintenance projects is subject to change. These projects are limited to those meeting any of the following criteria:

1. All projects that require soil disturbing activities
2. Adjacent to a Drinking Water or Ground Water Recharge Facility, as described in Section 4 of the DWP
3. A supplemental environmental project
4. Additional projects per agreement between the District and local RWQCB

Projects listed in Table 6-1 include (where applicable):

1. Location (county, route and post mile limits)
2. Project number (expense authorization)
3. Basic Project Description
4. Disturbed soil area
5. Presence of receiving waters within or adjacent to project limits, with special designation for 303(d) listed water bodies (adopted)
6. Drinking Water Reservoir or Ground Water Recharge Facility within or adjacent to project (as identified in Section 4 of the DWP)
7. Projected milestone dates of PA/ED, PS&E, begin Construction, and end Construction
8. Description of Construction Controls
9. Post-Construction Treatment Controls (types and quantities)
10. Dredge and fill (CWA-401) activities within the project
11. Other Regional Water Control Board Permits Required
12. Potential and Actual Impacts of Project's Discharge
13. Area of New Impervious Surface
14. Percentage of New Impervious Surface to Existing Impervious Surface

The updated lists of projects meeting these criteria will also be provided to the RWQCB annually on October 1st. Furthermore, this section identifies planned maintenance projects with soil disturbance. Information associated with the project includes location, affected water body, and area of disturbance. In addition, this section also describes the planned stormwater monitoring activities within the District; however, these activities may be conducted jointly with other Districts and HQ. Consequently, the information contained in a DWP may be repeated in another DWP.

This page was intentionally left blank.

Table 6-1: District 1 Anticipated Project Development and Construction Schedule

No.	EA	Project Location					Project Description ^{1,2}	Water Bodies Within or Adjacent to Project Limits ³	Dredge and Fill Activities (Y/N/NA) ⁴	Other Regional Water Board Permits Required ⁵	Impacts of Potential and Actual Project's Discharge ⁶	Disturbed Soil Area (acres)	Area of New Impervious Surface (acres)	Percentage of New Impervious Surface to Percentage of Existing Impervious Surface	Description of Construction Controls (SWPPP/WPCP/TBD) ⁷	Post-Construction Treatment Control Type, Quantity ⁸	Anticipated Project Delivery Schedule		Construction Period	
		Co.	Route	Begin PM	End PM	RB ⁹											PA&ED Date	PS&E Date	Start Date	End Date
1	01-0F240	Del Norte	101	5.1	5.6	1	Ehlers Left Turn Pocket	Klamath River	N	Yurok Tribal	-	TBD	0.47	TBD	TBD	TBD	12./1/20	9/1/2021	8/1/2022	9/1/2023
2	01-0B090	Del Norte	101	8.2	8.7	1	Hunter Creek Bridge and Panther Creek Bridge Replacement	Hunter Creek, Panther Creek, Klamath River	Y	Yurok Tribal	-	4.5	0.43	TBD	SWPPP	E	7/5/2018	4/1/2019	6/15/2020	12/30/2023
3	01-0F280	Del Norte	101	12	15.5	1	Last Chance Grade	Wilson Creek (Smith River), Pacific Ocean	Y	-	-	> 1	TBD	TBD	SWPPP	TBD	2/16/2026	4/15/1930	6/16/1931	10/14/1939
4	01-0G100	Del Norte	101	12.5	15.5	1	Emergency Roadway Stabilization and Retaining Wall Repair	Wilson Creek (Smith River), Pacific Ocean	N	-	-	< 1	0	0	WPCP	E	1/15/2016	2/15/2016	2/16/2016	1/1/2020
5	01-0H690	Del Norte	101	15.1	15.5	1	Emergency Repair and Construct Retaining Walls	Wilson Creek (Smith River), Pacific Ocean	N	-	-	< 1	0	0	WPCP	E	5/25/2017	6/20/2017	12./1/17	10/1/2020
6	01-0G210	Del Norte	101	21.23	21.23	1	Cusing Creek Viaduct	Cushing Creek (Smith River)	Y	Yurok Tribal	-	> 1	0.5	0	SWPPP		10/1/2019	9/1/2020	9/1/2021	12/1/2023
7	01-0C660	Del Norte	101	25.8	27.3	1	Crescent City ADA	Smith River, Pacific Ocean	N	-	-	3.7	3	0.95	SWPPP	E	6/27/2018	1/8/2020	10/30/2020	10/28/2022
8	01-0G530	Del Norte	101	27	27	1	Crescent City Maintenance Yard Land Acquisition	Smith River, Pacific Ocean	N	-	-	< 1	0	0	WPCP	E	12/1/2018	6/1/2019	12/1/2019	
9	01-43640	Del Norte	101	35.8	36.5	1	Replace Dr. Fine Bridge	Smith River, Pacific Ocean	Y	-	-	3.7	4.9	59	SWPPP	C	12/1/2019	12/1/2020	12/10/2021	12/2/2025

¹ Supplemental Environmental Projects designated as “SEP.”
² Projects adjacent to Drinking Water Reservoirs or Ground Water Recharge Facilities are noted (DW) and (GW), respectively.
³ Water bodies with designation for 303(d) designation are noted in parentheses.
⁴ If yes, a 401 permit will be required for this project. NA = Not Available at this time.
⁵ Regional Water Board Permits required other than Construction General Permit and Clean Water Act Section 401 water quality certification, such as Waiver of Discharge Requirements, Dewatering Permits, Bridge Painting WDRs, etc.
⁶ This information may come from the Water Quality Assessment Report prepared for each project, a Water Quality Technical Memorandum, or other document that evaluates the water quality impacts of a project.
⁷ A description of the Construction Controls is available in the project’s Storm Water Pollution Prevention Plan (SWPPP), Water Pollution Control Plan (WPCP), or is To Be Determined (TBD) if the Disturbed Soil Area is unavailable.
⁸ Treatment Control Status identified by: device type/number of devices, exempt (“E”), or under consideration (“C”). See Treatment Control Status Legend below for device type abbreviations.
⁹ Regional Board

Table 6-1: District 1 Anticipated Project Development and Construction Schedule

No.	EA	Project Location					Project Description ^{1,2}	Water Bodies Within or Adjacent to Project Limits ³	Dredge and Fill Activities (Y/N/NA) ⁴	Other Regional Water Board Permits Required ⁵	Impacts of Potential and Actual Project's Discharge ⁶	Disturbed Soil Area (acres)	Area of New Impervious Surface (acres)	Percentage of New Impervious Surface to Percentage of Existing Impervious Surface	Description of Construction Controls (SWPPP/WPCP/TBD) ⁷	Post-Construction Treatment Control Type, Quantity ⁸	Anticipated Project Delivery Schedule		Construction Period	
		Co.	Route	Begin PM	End PM	RB ⁹											PA&ED Date	PS&E Date	Start Date	End Date
10	01-0F310	Del Norte	101	39.8	39.8	1	Domine Creek Bridge Replacement	Dominie Creek, Rowdy Creek (Smith River)	Y	-	-	3	0.25	TBD	SWPPP	C	1/15/2019	12/6/2019	7/22/2020	3/23/2023
11	01-45490	Del Norte	197	3.2	4	1	Ruby 2 Shoulder Widening	Smith River	Y	-	-	2	0.14	83	WPCP	C	4/11/2013	12/1/2018	8/1/2019	8/1/2020
12	01-48110	Del Norte	197	4.5	4.5	1	Ruby 1 Widening	Smith River	N	-	-	0.3	0.07	0	WPCP	E	4/11/2013	7/1/2018	3/1/2019	3/1/2020
13	01-48800	Del Norte	199	1.1	36.3	1	Del Norte Culvert Rehabilitation	Clarks Creek (Smith River), Griffin Creek (Rogue River)	Y	-	-	> 1	0	0	SWPPP	E	5/1/2019	2/3/2019	10/1/2020	2/1/2023
14	01-0J070	Del Norte	199	4.2	11.01	1	Hiouchi Overlay	Hardscrabble Creek, Smith River	N	-	-	0	0	0	WPCP	E	12/1/2018	12/15/2018	7/15/2019	11/1/2020
15	01-0G130	Del Norte	199	10.24	10.7	1	Del Norte 199 Safety Improvements	Hardscrabble Creek, Smith River	N	-	-	0.07	0	0	WPCP	E	12/1/2018	12/2/2019	6/6/2020	10/1/2021
16	01-4500U	Del Norte	199	22.7	26.5	1	Washington Narrows STAA Widening	Smith River, MF Smith River	Y	-	-	2.74	0.29	0.18	SWPPP	C	4/11/2013	7/1/2019	11/29/2019	5/1/2020
17	01-0H770	Del Norte	199	28.06	28.06	1	Idlewild Maintenance Station Replace HMA	Smith River	N	-	-	0	0	0	WPCP	E	9/1/2018	10/1/2018	4/1/2019	10/1/2019
18	01-0F760	Del Norte	199	28.1	28.1	1	Idlewild Maintenance Station Rehab	Smith River	N	-	-	0	0	0	WPCP	E	4/1/2020	4/1/2021	2/1/2022	12/1/2023
19	01-0E140	Del Norte	199	33.1	36.2	1	Restore Collier Tunnel Communication	Smith River	N	-	-	0	0	0	WPCP	E	7/1/2018	-	4/1/2019	5/1/2019
20	01-0C470	Del Norte	199	33.41	33.41	1	Collier Rest Area Rehab	Smith River	N	WDR	-	< 1	0	0	WPCP	E	9/29/2017	6/7/2020	12/1/2018	12/1/2020
21	01-0G200	Del Norte	199	33.41	34.96	1	Collier Tunnel Phone Service	Smith River	N	-	-	< 1	0	0	WPCP	E	11/1/2018	12/1/2018	4/15/2019	9/1/2019
22	01-0F430	Del Norte	199	33.5	33.9	1	Collier Tunnel Electrical Upgrade	Smith River	N	-	-	< 1	0	0	WPCP	E	4/1/2019	4/1/2020	1/1/2021	12/1/2022
23	01-0G880	Del Norte	VAR	VAR	VAR	1	Replace Pavement Markers	Smith River, Klamath River, Pacific Ocean	N	-	-	< 1	0	0	WPCP	E	7/24/2017	-	7/1/2019	11/1/2020
24	01-0G630	Del Norte, Humboldt, Mendocino, Lake	101, 1, 20, 29	VAR	VAR	1 and 5	Install Vehicle Loop Detectors	Smith River, Pacific Ocean, Eel River, Clear Lake	N	-	-	< 1	0	0	WPCP	E	11/1/2017	3/1/2018	6/15/2018	10/1/2018
25	01-0F860	Del Norte/Humboldt	101	131.7	0.1	1	RHMA Overlay	Redwood Creek	N	-	-	0	0	0	WPCP	E	8/10/2017	11/28/2017	3/19/2018	11/1/2019

Table 6-1: District 1 Anticipated Project Development and Construction Schedule

No.	EA	Project Location					Project Description ^{1,2}	Water Bodies Within or Adjacent to Project Limits ³	Dredge and Fill Activities (Y/N/NA) ⁴	Other Regional Water Board Permits Required ⁵	Impacts of Potential and Actual Project's Discharge ⁶	Disturbed Soil Area (acres)	Area of New Impervious Surface (acres)	Percentage of New Impervious Surface to Percentage of Existing Impervious Surface	Description of Construction Controls (SWPPP/WPCP/TBD) ⁷	Post-Construction Treatment Control Type, Quantity ⁸	Anticipated Project Delivery Schedule		Construction Period	
		Co.	Route	Begin PM	End PM	RB ⁹											PA&ED Date	PS&E Date	Start Date	End Date
26	01-OH730	Del Norte/Humboldt	101	VAR	VAR	1	Pavement Restoration and Striping	Smith River, Pacific Ocean	N	-	-	0	0	0	WPCP	E	10/17/2017	10/27/2017	4/3/2018	11/1/2019
27	01-OC590	Del Norte/Humboldt	101,169,197,199	VAR	VAR	1	Upgrade MBGR	Smith River, Klamath River, Trinity River, Pacific Ocean	N	-	-	0	0	0	WPCP	E	1/28/2016	3/21/17	8/9/2017	12/1/2018
28	01-OH950	Del Norte/Humboldt	199, 299	VAR	VAR	1	Replace Thermoplastic Stripe and Marker Delineation	Smith River, Redwood Creek, Willow Creek	N	-	-	< 1	0	0	WPCP	E	8/1/2018	12/31/2018	5/1/2019	11/1/2020
29	01-OJ180	Del Norte/Humboldt/Mendocino	101, 200, 299, 1, 162	VAR	VAR	1	North Area Bridge Repair	Smith River, Humboldt Bay, Mad River, Pudding Creek, De Haven Creek, Pacific Ocean, Bloody Run Creek (Outlet Creek)	N	WDR	-	< 1	0	0	WPCP	E	10/1/2019	12/31/2019	5/1/2020	11/1/2021
30	01-OE010	Humboldt	36	0.1	1.6	1	Alton Shoulder Widening	Van Duzen River, Eel River	Y	-	-	6	2.8	39	SWPPP	C	9/1/2019	2/4/2021	7/18/2021	10/1/2023
31	01-OF160	Humboldt	36	10.5	10.8	1	Carlotta Curve Improvement	Van Duzen (Eel River)	Y	-	-	2	1.8	62	SWPPP	C	9/1/2019	5/30/2020	12/1/2020	7/1/2022
32	01-OC500	Humboldt	36	11.4	34.5	1	Three Bridges Rail Upgrade and Widening	Hely Creek, Little Larabee Creek, Butte Creek, (Van Duzen River)	Y	-	-	> 1	TBD	TBD	SWPPP	C	10/30/2020	10/8/2021	3/30/2022	6/30/2025
33	01-OH610	Humboldt	36	13.5	36.1	1	Hum 36 CAPM and MBGR Upgrade	Van Duzen River	N	WDR	-	< 1	0	0	WPCP	E	12/23/1921	2/10/2023	7/19/2023	12/1/2024
34	01-OF500	Humboldt	36	17.94	23.91	1	Five Bridges Deck Preservation	Van Duzen River (Eel River)	N	WDR	-	< 1	0	0	WPCP	E	5/15/2020	7/6/2021	4/11/2022	12/29/2023
35	01-49200	Humboldt	36	23.33	42.65	1	Black Lassic Culvert Replacement	Van Duzen	Y	-	-	< 1	0	0	WPCP	E	10/3/2017	2/21/2018	6/1/2018	10/1/2019
36	01-43730	Humboldt	36	36.1	40.5	1	Buck Mountain Roadway Widening	Van Duzen	Y	-	-	15.2	2.13	-	SWPPP	BIOSTP, BIOSWL	1/30/2015	7/1/2016	7/1/2017	1/1/2019
37	01-OG920	Humboldt	36	36.3	44	1	Emergency Storm Damage Repairs	Vab Duzen	N	WDR	-	< 1	0	0	WPCP	E	12/10/2016	1/15/2017	2/3/2017	5/1/2019

Table 6-1: District 1 Anticipated Project Development and Construction Schedule

No.	EA	Project Location					Project Description ^{1,2}	Water Bodies Within or Adjacent to Project Limits ³	Dredge and Fill Activities (Y/N/NA) ⁴	Other Regional Water Board Permits Required ⁵	Impacts of Potential and Actual Project's Discharge ⁶	Disturbed Soil Area (acres)	Area of New Impervious Surface (acres)	Percentage of New Impervious Surface to Percentage of Existing Impervious Surface	Description of Construction Controls (SWPPP/WPCP/TBD) ⁷	Post-Construction Treatment Control Type, Quantity ⁸	Anticipated Project Delivery Schedule		Construction Period	
		Co.	Route	Begin PM	End PM	RB ⁹											PA&ED Date	PS&E Date	Start Date	End Date
38	01-OG710	Humboldt	96	0.6	0.6	1	Willow Creek Maintenance Station Install Zero Emission Charging	Willow Creek (Trinity River)	N	-	-	< 1	0	0	WPCP	E	4/11/2018	3/29/2018	9/15/2018	7/15/2019
39	01-OG160	Humboldt	96	8.83	8.83	1	Campbell Creek Fish Passage	Cambell Creek (Trinity River)	Y	-	-	TBD	0	0	TBD	C	7/1/2018	12/1/2018	5/1/2019	10/1/2019
40	01-48030	Humboldt	96	12	12.8	1	Downtown Hoopa Traffic Calming Improvements	Horse Linto Creek (Trinity River)	N	-	-	1.73	0.9	TBD	SWPPP	E	8/16/2017	TBD	TBD	TBD
41	01-0F080	Humboldt	96	22.9	22.9	1	Weitchpec Retaining Wall	Trinity River	N	-	-	< 1	0	0	WPCP	E	9/1/2018	2/24/2019	6/28/2019	10/27/2020
42	01-0F350	Humboldt	96	22.95	22.95	1	Weitchpec Bridge Seismic Retrofit	Klamath River	TBD	Yurok Tribal	-	TBD	TBF	TBD	TBD	C	4/25/2020	6/4/2022	1/12/2023	12/1/2027
43	01-OG690	Humboldt	96	VAR	VAR	1	Rubberized Seal Coat	Klamath River	N	-	-	0	0	0	WPCP	E	9/13/2017	2/20/2018	5/23/2018	11/1/2019
44	01-OH640	Humboldt	101	0.5	54.3	1	Hum 101 Drainage System Rehabilitation-South	SF Eel River, Eel River	Y	-	-	4.2	0	0	0	E	1/13/2021	2/23/2023	9/27/2023	3/25/2025
45	01-46480	Humboldt	101	1.1	2.2	1	Richardson's Grove STAA Improvements	SF Eel River	Y	-	-	0.73	0.29	8	WPCP	E	5/22/2017	7/1/2019	5/1/2020	12/30/2020
46	01-48410	Humboldt	101	2.4	35	1	Garberville Minor A Replace Drainages	SF Eel River (Eel River)	Y	-	-	0.05	0	0	WPCP	E	2/3/2020	1/4/2021	9/8/2021	12/1/2023
47	01-0E770	Humboldt	101	17.9	87.8	1	Hum 101 Strengthen Three Bridges	Humboldt Bay (Pacific Ocean), SF Eel River (Eel River)	N	WDR	-	< 1	0	0	WPCP	E	9/1/2018	4/1/2019	10/21/2019	10/4/2021
48	01-OG360	Humboldt	101	27.7	63.1	1	Place Polyester Concrete Overlay and Methacrylate Deck Seal	South Fork Eel River, Eel River, Van Duzen River	N	WDR	-	<1	0	0	WPCP	E	9/5/2017	11/9/2017	7/2/2018	11/1/2019
49	01-OA110	Humboldt	101	27.7	22.7	1	South Fork Eel River and Eel River Bridge Seismic Retrofit	SF Eel River (Eel River)	Y	-	-	9.7	0	0	SWPPP	E	12/1/2019	12/1/2020	8/1/2021	10/1/2022
50	01-OH320	Humboldt	101	32.2	35.8	1	Weott Overlay	Eel River	N	-	-	< 1	0	0	SWPPP	E	11/2/2017	2/26/2018	7/15/2018	11/1/2019
51	01-0F360	Humboldt	101	39.2	48.3	1	Redcrest CAPM	SF Eel River	N	-	-	< 1	0	0	WPCP	E	6/15/2018	12/1/2018	8/1/2019	12/1/2020
52	01-OA111	Humboldt	101	53.9	53.9	1	Eel River Bridge Seismic Retrofit	Eel River	TBD	-	-	TBD	TBD	TBD	TBD	C	5/1/2021	6/1/2022	1/1/2023	6/1/2025
53	01-OG610	Humboldt	101	57.14	67.79	1	Fortuna Roadside Median Project	Eel River	Y	-	-	7.88	7.88	12.7	SWPPP	DPPIA	3/1/2020	12/15/2021	8/22/2022	12/1/2023

Table 6-1: District 1 Anticipated Project Development and Construction Schedule

No.	EA	Project Location					Project Description ^{1,2}	Water Bodies Within or Adjacent to Project Limits ³	Dredge and Fill Activities (Y/N/NA) ⁴	Other Regional Water Board Permits Required ⁵	Impacts of Potential and Actual Project's Discharge ⁶	Disturbed Soil Area (acres)	Area of New Impervious Surface (acres)	Percentage of New Impervious Surface to Percentage of Existing Impervious Surface	Description of Construction Controls (SWPPP/WPCP/TBD) ⁷	Post-Construction Treatment Control Type, Quantity ⁸	Anticipated Project Delivery Schedule		Construction Period	
		Co.	Route	Begin PM	End PM	RB ⁹											PA&ED Date	PS&E Date	Start Date	End Date
54	01-OC570	Humboldt	101	69.9	75.2	1	King Salmon Roadway Rehabilitation	Humboldt Bay (Pacific Ocean)	N	-	-	> 1	TBD	TBD	SWPPP	C	2/15/2019	1/1/2020	7/6/2020	10/1/2022
55	01-OH380	Humboldt	101	70.57	72.04	1	Tompkins Hill OH Seismic	Humboldt Bay (Pacific Ocean)	Y	-	-	TBD	TBD	TBD	TBD	C	8/15/2023	3/12/2025	7/23/2025	7/16/2027
56	01-OH740	Humboldt	101	75.17	77.09	1	Broadway Bike Lanes	Humboldt Bay (Pacific Ocean)	N	-	-	< 1	0	0	WPCP	E	12/1/2018	1/5/2019	4/1/2019	10/1/2019
57	01-OB620	Humboldt	101	75.3	77.6	1	Broadway ADA Curb Returns/Ramps Upgrade	Humboldt Bay (Pacific Ocean)	N	-	-	< 1	0	0	WPCP	E	2/1/2019	1/18/2020	6/20/2020	12/1/2021
58	01-OC710	Humboldt	101	77	77.5	1	Wabash and Fairfield Intersection Safety Improvements	Humboldt Bay (Pacific Ocean)	N	-	-	< 1	0.06	0	WPCP	E	3/22/2017	4/20/2018	10/17/2018	12/1/2019
59	01-OG420	Humboldt	101	77.3	78.1	1	Eureka Sidewalk and Curb Reconstruction	Humboldt Bay (Pacific Ocean)	N	-	-	< 1	0	0	WPCP	E	12/1/2019	5/12/2021	4/26/2022	12/1/2023
60	01-OH200	Humboldt	101	77.9	79.5	1	Fifth Street Curve Improvement	Humboldt Bay (Pacific Ocean)	N	-	-	< 1	0	0	WPCP	E	1/21/2020	7/13/2021	12/22/2021	10/1/2023
61	01-OE040	Humboldt	101	78	79.8	1	Eureka CAPM	Humboldt Bay (Pacific Ocean)	N	-	-	< 1	0	0	WPCP	E	6/14/2018	5/18/2019	10/3/2019	12/1/2020
62	01-OE680	Humboldt	101	78.1	79.6	1	Fourth Street Traffic Calming	Humboldt Bay (Pacific Ocean)	N	-	-	1.4	0.2	1.3	SWPPP	E	6/22/2018	5/18/2019	1/23/2020	12/1/2021
63	01-OF200	Humboldt	101	79.5	80.2	1	South Bound Eureka Slough Bridge Seismic Retrofit	Humboldt Bay (Pacific Ocean)	TBD	-	-	TBD	TBD	TBD	TBD	C	8/1/2019	12/1/2019	10/3/2020	12/1/2024
64	01-OE000	Humboldt	101	79.8	84.7	1	Eureka Corridor Bridge and Rail Replacement/Upgrade	Jacoby Creek, Gannon Slough, Humboldt Bay (Pacific Ocean)	Y	-	-	1.5	0.91	0	SWPPP	E	1/10/2017	2/15/2019	11/21/2019	12/1/2021
65	01-36600	Humboldt	101	79.8	85.8	1	Eureka-Arcata Corridor 4-Lane Upgrade	Humboldt Bay (Pacific Ocean)	Y	-	-	23.3	2.82	9	SWPPP	BIOSTP	1/10/2017	8/1/2019	4/7/2021	12/1/2023
66	01-OC930	Humboldt	101	79.9	84.9	1	Eureka-Arcate Corridor Tide Gate Replacement	Humboldt Bay (Pacific Ocean)	Y	-	-	> 1	0	0	SWPPP	E	1/10/2017	2/1/2019	10/13/2019	12/1/2020
67	01-OF220	Humboldt	101	79.9	86.1	1	Eureka-Arcata Corridor Acceleration/Deceleration Lanes	Humboldt Bay (Pacific Ocean)	Y	-	-	6.5	1.2	9	SWPPP	BIOSTP	1/10/2017	3/1/2019	8/29/2019	12/1/2020

Table 6-1: District 1 Anticipated Project Development and Construction Schedule

No.	EA	Project Location					Project Description ^{1,2}	Water Bodies Within or Adjacent to Project Limits ³	Dredge and Fill Activities (Y/N/NA) ⁴	Other Regional Water Board Permits Required ⁵	Impacts of Potential and Actual Project's Discharge ⁶	Disturbed Soil Area (acres)	Area of New Impervious Surface (acres)	Percentage of New Impervious Surface to Percentage of Existing Impervious Surface	Description of Construction Controls (SWPPP/WPCP/TBD) ⁷	Post-Construction Treatment Control Type, Quantity ⁸	Anticipated Project Delivery Schedule		Construction Period	
		Co.	Route	Begin PM	End PM	RB ⁹											PA&ED Date	PS&E Date	Start Date	End Date
68	01-OC970	Humboldt	101	80.8	87.8	1	Eureka-Arcata Corridor MBGR	Humboldt Bay (Pacific Ocean)	Y	-	-	4.82	0.87	18	SWPPP	E	1/10/2017	3/1/2019	8/29/2019	12/1/2020
69	01-OG580	Humboldt	101	87.5	89.5	1	Reconstruct MBGR Near Arcata	Humboldt Bay (Pacific Ocean)	Y	-	-	2	1.23	6	SWPPP	DPPIA	3/1/2020	6/20/2021	3/13/2022	12/1/2022
70	01-OG510	Humboldt	101	87.8	91.5	1	Place HFST and Rumble Strips	Mad River (Pacific Ocean)	N	-	-	< 1	0	0	WPCP	E	5/1/2019	10/1/2019	5/1/2020	1/1/2021
71	01-OE650	Humboldt	101	88.2	88.3	1	Hum 299/101 Ramp Realignment and Improvement	McDaniel Slough (Pacific Ocean)	N	-	-	3.13	0.52	85	SWPPP	E	6/1/2018	11/1/2019	5/1/2020	12/1/2021
72	01-OE890	Humboldt	101	88.3	88.6	1	Arcata Auxiliary Lanes	Humboldt Bay (Pacific Ocean)	TBD	-	-	1.12	0.61	70	SWPPP	E	10/1/2020	10/1/2021	5/1/2022	6/1/2023
73	01-OF820	Humboldt	101	90.1	109.6	1	Trinidad CAPM and Dig Outs	Mad River, Big Lagoon, Pacific Ocean	N	-	-	> 1	0	0	SWPPP	E	8/1/2019	11/1/2020	6/1/2021	12/1/2022
74	01-OF780	Humboldt	101	93.8	95.6	1	McKinleyville Barrier Rail	Mad River	N	WDR	-	< 1	0	0	WPCP	E	8/1/2018	9/1/2018	2/1/2019	10/1/2019
75	01-OG370	Humboldt	101	97	97.5	1	Fence Repair Near Westhaven	Little River (Pacific Ocean)	N	-	-	< 1	0	0	WPCP	E	11/1/2019	-	7/1/2020	11/1/2021
76	01-OC440	Humboldt	101	102.9	105.2	1	Trinidad Safety Roadside Rest Area	Luffebholtz Creek, Big Lagoon, Pacific Ocean	N	WDR	-	> 1	0	0	SWPPP	E	9/29/2017	5/3/2018	12/5/2018	12/10/2020
77	01-OB421	Humboldt	101	110.6	113.8	1	Lagoons Slip and Slide Re-vegetation	Luffebholtz Creek, Big Lagoon, Pacific Ocean	N	-	-	< 1	0	0	WPCP	E	6/30/2015	3/24/2017	10/19/2017	1/25/2025
78	01-OB420	Humboldt	101	110.6	113.8	1	Lagoons Slip and Slide	Luffebholtz Creek, Big Lagoon, Pacific Ocean	Y	-	-	< 1	0	0	WPCP	E	6/30/2015	3/24/2017	11/28/2017	1/1/2020
79	01-OF960	Humboldt	101	124.5	124.5	1	Little Lost Man Creek Bridge-Fish Passage Improvement	Little Lost Man Creek (Redwood Creek)	Y	-	-	0.8	0.11	0	WPCP	E	6/1/2018	3/21/2019	8/28/2019	12/1/2021

Table 6-1: District 1 Anticipated Project Development and Construction Schedule

No.	EA	Project Location					Project Description ^{1,2}	Water Bodies Within or Adjacent to Project Limits ³	Dredge and Fill Activities (Y/N/NA) ⁴	Other Regional Water Board Permits Required ⁵	Impacts of Potential and Actual Project's Discharge ⁶	Disturbed Soil Area (acres)	Area of New Impervious Surface (acres)	Percentage of New Impervious Surface to Percentage of Existing Impervious Surface	Description of Construction Controls (SWPPP/WPCP/TBD) ⁷	Post-Construction Treatment Control Type, Quantity ⁸	Anticipated Project Delivery Schedule		Construction Period	
		Co.	Route	Begin PM	End PM	RB ⁹											PA&ED Date	PS&E Date	Start Date	End Date
80	01-OH410	Humboldt	169	13.7	33.84	1	116 Culvert Rehabilitation	Horse Linto Creek, Trinity River, Bluff Creek, Klamath River	Y	-	-	TBD	TBD	TBD	TBD	C	12/22/2020	2/2/2023	9/7/2023	3/5/2025
81	01-4933U	Humboldt	169	21	33.3	1	Koke Eight Culvert Replacement	Deerhorn Creek (Trinity River), Slate Creek (Klamath River)	Y	Yurok Tribal	-	< 1	0	0	WPCP	E	12/13/2017	10/1/2018	4/1/2019	10/1/2019
82	01-43050	Humboldt	169	33.5	33.8	1	Weitchee Curve Improvement	Bluff Creek (Klamath River)	Y	Yurok Tribal	-	> 1	TBD	TBD	SWPPP	C	9/1/2018	12/1/2019	9/1/2020	7/1/2023
83	01-OH010	Humboldt	254	4	6	1	HUM 254 Emergency Slipout Repair	SF Eel River	N	-	-	< 1	0	0	WPCP	E	1/15/2017	2/20/2017	3/4/2017	4/1/2019
84	01-OE790	Humboldt	254	4.2	4.2	1	Construct Fish Creek Bridge-Fish Passage Improvement	Fish Creek (SF Eel River)	Y	-	-	1	0.07	70	SWPPP	C	3/01/2021	02/02/2022	8/02/2022	12/02/2026
85	01-40950	Humboldt	254	6.8	42.1	1	HUM 254 Seven Culvert Rehabilitation	SF Eel River	Y	-	-	0.25	0	0	WPCP	E	9/29/2017	10/1/2018	8/1/2019	1/1/2021
86	01-OG010	Humboldt	255	3.65	4.19	1	Manila Moves Multi Use Path	Humboldt Bay (Pacific Ocean)	N	-	-	TBD	TBD	TBD	TBD	C	4/15/2018	1/15/2019	12/30/2019	12/15/2022
87	01-36601	Humboldt	255	6	7.6	1	Eureka-Arcata Corridor Mitigation Project	Humboldt Bay (Pacific Ocean)	Y	-	-	> 1	0	0	SWPPP	E	11/1/2018	12/15/2019	6/20/2020	12/1/2021
88	01-OH560	Humboldt	299	0	5.7	1	Arcata to Blue Lake CAPM	Mad River	N	-	-	4	3.25	14	SWPPP	C	10/1/2021	8/1/2022	4/1/2023	2/1/2024
89	01-OF620	Humboldt	299	1.9	37.8	1	HUM 299 Culverts Upgrade and Replace	NF Mad River (Mad River, Redwood Creek)	Y	-	-	1.13	0	0	SWPPP	C	11/1/2020	9/1/2021	5/1/2022	11/1/2022
90	01-OH580	Humboldt	299	11	22.5	1	Redwood Creek Bridge CAPM	Redwood Creek	N	WDR	-	< 1	0	0	WPCP	E	10/1/2021	8/1/2022	4/1/2023	2/1/2024
91	01-OF690	Humboldt	299	14.7	15.7	1	Widen Shoulders and Install Rumble Strips	NF Mad River (Mad River)	N	-	-	> 1	0.75	TBD	SWPPP	E	9/1/2018	4/1/2019	12/1/2019	12/1/2020
92	01-OE030	Humboldt	299	16.1	26.6	1	SHOPP 335 Slope Repair and Drainage Improvements	Mad River, Redwood Creek	N	-	-	1.5	0	0	SWPPP	SA, BIOSTP, INDTRE	1/29/2018	5/1/2019	1/1/2020	12/1/2022
93	01-OF460	Humboldt	299	20.5	30.2	1	HUM 299 Blue Lake Widen and Rumble	Mad River	Y	-	-	3.5	1.75	66	SWPPP	DPPIA	1/1/2019	11/1/2019	7/1/2020	12/1/2021

Table 6-1: District 1 Anticipated Project Development and Construction Schedule

No.	EA	Project Location					Project Description ^{1,2}	Water Bodies Within or Adjacent to Project Limits ³	Dredge and Fill Activities (Y/N/NA) ⁴	Other Regional Water Board Permits Required ⁵	Impacts of Potential and Actual Project's Discharge ⁶	Disturbed Soil Area (acres)	Area of New Impervious Surface (acres)	Percentage of New Impervious Surface to Percentage of Existing Impervious Surface	Description of Construction Controls (SWPPP/WPCP/TBD) ⁷	Post-Construction Treatment Control Type, Quantity ⁸	Anticipated Project Delivery Schedule		Construction Period	
		Co.	Route	Begin PM	End PM	RB ⁹											PA&ED Date	PS&E Date	Start Date	End Date
94	01-49210	Humboldt	299	21	34.3	1	HUM 299 Reconstruct Drainage	Redwood Creek, Trinity River	Y	-	-	0.5	0	0	WPCP	E	6/12/2017	12/1/2017	6/14/2018	8/1/2019
95	01-0F350	Humboldt	299	22.95	22.95	1	Weitchpec Bridge Seismic Retrofit	Redwood Creek	Y	Yurok Tribal	-	TBD	TBD	TBD	TBD	C	4/25/2020	6/4/2022	1/12/2023	12/1/2027
96	01-0G950	Humboldt	299	30.6	30.6	1	Emergency Storm Damage at Cedar Creek	Trinity River	N	-	-	< 1	0	0	WPCP	E	12/25/2016	2/1/2017	2/17/2017	12/21/2018
97	01-0F470	Humboldt	299	30.7	37.7	1	Willow Creek Widen and Rumble	Willow Creek (Trinity River)	Y	-	-	5	4.5	21	SWPPP	DPPIA	4/1/2019	2/1/2020	10/1/2020	12/1/2021
98	01-0F680	Humboldt	299	38.9	39.5	1	HUM 299 Widen Shoulders	Horse Linto Creek (Trinity River)	Y	-	-	1.74	0.33	12	SWPPP	C	6/1/2019	4/1/2020	12/1/2020	6/1/2021
99	01-0G320	Humboldt	101, 36	17	50.6	1	Grizzley Creek Warning Signs	Van Duzen River	N	-	-	< 1	0	0	WPCP	E	5/9/2018	6/15/2018	6/15/2018	10/1/2019
100	01-0G140	Humboldt	169, 96	VAR	VAR	1	HUM 96 and 169 Bridge Rail Upgrade	Rube Creek, Aikens Creek, Bluff Creek, Slate Creek, (Klamath River)	TBD	Yurok Tribal	-	TBD	0.23	TBD	TBD	E	4/1/2020	9/5/2021	12/1/2022	4/1/2026
101	01-0J190	Humboldt	36, 96, 169	VAR	VAR	1	Humboldt Bridge Paint and Rail Recast	Van Duzen River, Camp Creek (Klamath River), Pecwan Creek (Klamath River)	N	WDR	-	< 1	0	0	WPCP	E	10/1/2019	12/31/2019	5/1/2020	11/1/2021
102	01-0A120	Humboldt	96, 101	0.24	37.25, 86.77	1	Three Bridge Seismic Retrofit	Bluff Creek (Klamath River), Horse-Linto Creek (Trinity River)	Y	Yurok Tribal	-	TBD	TBD	TBD	TBD	C	4/1/2019	12/1/2019	9/1/2020	12/7/2024
103	01-0E100	Humboldt	96, 101	12.3	87.8	1	Clean and Paint Bridges	Trinity River, Janes Creek (Humboldt Bay)	N	Hoopa Tribal, WDR	-	< 1	0	0	WPCP	E	8/29/2016	2/10/2017	9/7/2017	7/1/2019
104	01-0C150	Humboldt	36	21.5	21.5	1	Little Golden Gate Stormwater	Van Duzen River	Y	-	-	3.2	0.1	0	SWPPP	DETBAS, SA	9/1/2020	6/1/2021	4/1/2022	7/1/2023
105	01-0G290	Humboldt	36	21.8	21.8	1	Golden Gate Guardrail Upgrade	Van Duzen	N	-	-	< 1	0	0	SWPPP	E	6/1/2017	8/15/2018	12/1/2018	11/1/2019

Table 6-1: District 1 Anticipated Project Development and Construction Schedule

No.	EA	Project Location					Project Description ^{1,2}	Water Bodies Within or Adjacent to Project Limits ³	Dredge and Fill Activities (Y/N/NA) ⁴	Other Regional Water Board Permits Required ⁵	Impacts of Potential and Actual Project's Discharge ⁶	Disturbed Soil Area (acres)	Area of New Impervious Surface (acres)	Percentage of New Impervious Surface to Percentage of Existing Impervious Surface	Description of Construction Controls (SWPPP/WPCP/TBD) ⁷	Post-Construction Treatment Control Type, Quantity ⁸	Anticipated Project Delivery Schedule		Construction Period	
		Co.	Route	Begin PM	End PM	RB ⁹											PA&ED Date	PS&E Date	Start Date	End Date
106	01-0A990	Humboldt	96	6.2	6.6	1	Sugar Bowl Ranch Curve Improvement	Horse Linto Creek (Trinity River)	Y	-	-	3	1.37	78	SWPPP	BIOSTP, BIOSWL	4/29/2015	10/15/2015	5/18/2016	7/1/2019
107	01-0F990	Humboldt	96	10.99	12.47	1	Install and Upgrade Pedestrian Facilities	Horse Linto Creek (Trinity River)	N	-	-	TBD	TBD	TBD	TBD	E	2/28/2019	8/1/2019	12/1/2019	3/1/2020
108	01-0F600	Humboldt	96	12.26	12.26	1	Trinity River Bridge Rail Upgrade	Trinity River	TBD	Hoopa Tribal		TBD	TBD	TBD	TBD	C	12/27/2021	12/26/2022	9/1/2023	1/10/2029
109	01-0H650	Humboldt	101	56.6	137.1	1	Hum 101 Drainage System Rehabilitation-North	Eel River, Humboldt Bay, Mad River, Redwood Creek	Y	-	-	8	0	0	SWPPP	E	5/19/2023	8/13/2024	2/5/2025	12/1/2026
110	01-0H240	Humboldt	254	0.4	45.1	1	HUM 254 Culvert Rehabilitation	SF Eel River	Y	-	-	> 1	TBD	TBD	SWPPP	C	11/5/2020	12/19/2022	7/26/2023	1/20/2025
111	01-0F510	Humboldt/Mendocino	101	0	106.8	1	South Fork Eel River Bridge Seismic Retrofit	South Fork Eel River	Y	-	-	<1	0	0	WPCP	E	10/1/2020	11/15/2021	6/1/2022	2/1/2024
112	01-0H720	Humboldt/Mendocino	101	VAR	VAR	1	Re-stripe	Eel River, Russian River	N	-	-	0	0	0	WPCP	E	10/17/2017	10/13/2017	3/29/2018	11/1/2019
113	01-0B820	Humboldt/Mendocino	101, 20	VAR	VAR	1	Upgrade MBGR	Red Mountain Creek, Bridges Creek Rock Creek, Broadus Creek (Eel River)	N	WDR	-	< 1	0	0	WPCP	E	10/12/2015	12/8/2016	6/22/2017	12/15/2018
114	01-0H840	Lake	20	2	2.8	5	Blue Lakes Curve Improvement	Scotts Creek (Cache Creek)	TBD	-	-	TBD	TBD	TBD	TED	C	9/23/2020	3/13/2022	8/31/2022	10/1/2024
115	01-0G330	Lake	20	5.1	5.7	5	Lake 20 Shoulder Widening	Scotts Creek (Cache Creek)	Y	-	-	1.2	1.2	63	SWPPP	DPPIA	5/01/2019	3/20/2020	12/3/2020	12/1/2022
116	01-0F490	Lake	20	5.8	5.8	5	Bachelor Creek Bridge Rehabilitation	Bachelor Creek (Upper Cache Creek)	Y	-	-	> 1	TBD	TBD	SWPPP	C	12/26/2018	6/26/2020	12/17/2020	11/15/2022
117	01-0H470	Lake	20	10.9	11.4	5	Install Lights on Pomo Way	Cache Creek, Kelsey Creek (Clear Lake)	N	-	-	< 1	0	0	WPCP	E	12/1/2018	1/15/2019	3/1/2019	6/15/2019
118	01-0G700	Lake	20	28.4	28.4	5	Install Zero Emission Charging Stations at Clear Lake Oaks Maintenance Station	Cache Creek, Kelsey Creek (Clear Lake)	N	-	-	< 1	0	0	WPCP	E	6/14/2018	12/17/2018	5/15/2019	8/15/2019

Table 6-1: District 1 Anticipated Project Development and Construction Schedule

No.	EA	Project Location					Project Description ^{1,2}	Water Bodies Within or Adjacent to Project Limits ³	Dredge and Fill Activities (Y/N/NA) ⁴	Other Regional Water Board Permits Required ⁵	Impacts of Potential and Actual Project's Discharge ⁶	Disturbed Soil Area (acres)	Area of New Impervious Surface (acres)	Percentage of New Impervious Surface to Percentage of Existing Impervious Surface	Description of Construction Controls (SWPPP/WPCP/TBD) ⁷	Post-Construction Treatment Control Type, Quantity ⁸	Anticipated Project Delivery Schedule		Construction Period	
		Co.	Route	Begin PM	End PM	RB ⁹											PA&ED Date	PS&E Date	Start Date	End Date
119	01-OH370	Lake	20	33.6	46.5	5	Clear Lake Overlay	Cache Creek, Kelsey Creek (Clear Lake)	N	-	-	< 1	0	0	WPCP	E	3/7/2018	2/5/2018	7/15/2018	11/1/2019
120	01-OG000	Lake	29	4.15	5.14	5	Middletown Multi-Use Path	Saint Helena Creek (Putah Creek)	N	-	-	< 1	0	0	WPCP	E	4/15/2018	1/15/2019	12/30/2019	15/15/22
121	01-OC750	Lake	29	9.6	10.3	5	Hartman Road Roundabout Intersection Improvement	Crazy Creek (Putah Creek)	N	-	-	6.4	1	40	SWPPP	BIOSTP, BIOSWL	8/1/2016	10/3/2017	4/17/2018	2/15/2020
122	01-OE720	Lake	29	12.8	14.4	5	Coyote Grade Shoulder Widening	Copsey Creek (Cache Creek)	Y	-	-	2	1.9	24	SWPPP	C	2/1/2019	9/15/2019	4/15/2020	12/1/2021
123	01-OE730	Lake	29	17.74	20.73	5	Lake 29 Widening and Truck Lane	Seigler Canyon Creek (Upper Cache Creek)	Y	-	-	> 1	2.86	52	SWPPP	C	10/1/2018	8/20/2019	2/5/2020	9/22/2021
124	01-29811	Lake	29	23.8	31.6	5	Lake 29 Expressway-Mitigation	McIntire Creek, Cole Creek, Clear Lake, Kelsey Creek (Upper Cache Creek)	N	-	-	> 1	0	0	SWPPP	C	11/30/2018	12/1/2018	8/3/2019	12/1/2022
125	01-2981U	Lake	29	23.8	31.6	5	Lake 29 Expressway	McIntire Creek, Cole Creek, Clear Lake, Kelsey Creek (Upper Cache Creek)	Y	-	-	379	83	32	SWPPP	BIOSTP, BIOSWL, INDBAS, DETBAS, TRCSND	11/30/2016	12/1/2018	8/3/2019	12/1/2022
126	01-OH880	Lake	29	34.9	35.3	5	Kelsey Creek Left Turn Lane Channelization	Kelsey Creek (Upper Cache Creek)	Y	-	-	3	0.3	TBD	SWPPP	E	2/10/2020	3/13/2021	8/25/2021	11/1/2022
127	01-OH350	Lake	175	0	8.2	5	Lakeport Overlay	Dooley Creek (Upper Russian River)	N	-	-	< 1	0	0	WPCP	E	11/27/2017	10/1/2021	5/1/2022	11/1/2023
128	01-OH460	Lake	175	0.2	0.42	5	LAK 175 Curve Improvement	South Fork Scotts Creek (Upper Cache Creek)	N	-	-	1.5	0.52	TBD	SWPPP	E	1/8/2021	2/17/2018	9/22/2023	3/20/2025
129	01-OA040	Lake	175	25	27.5	5	Middletown Shoulder Widening	Dry Creek (Upper Putah Creek)	Y	-	-	28	2.4	25	SWPPP	BIOSTP, DPPIA	5/22/2017	5/13/2018	12/17/2018	10/18/2021
130	01-OE080	Lake	20, 29, 175	VAR	VAR	5	Five Lake Bridges	Cache Creek, Manning Creek, Robinson Creek, Kelsey Creek	Y	-	-	1.5	0.42	21	SWPPP	E	3/1/2019	3/1/2020	7/15/2020	1/1/2022

Table 6-1: District 1 Anticipated Project Development and Construction Schedule

No.	EA	Project Location					Project Description ^{1,2}	Water Bodies Within or Adjacent to Project Limits ³	Dredge and Fill Activities (Y/N/NA) ⁴	Other Regional Water Board Permits Required ⁵	Impacts of Potential and Actual Project's Discharge ⁶	Disturbed Soil Area (acres)	Area of New Impervious Surface (acres)	Percentage of New Impervious Surface to Percentage of Existing Impervious Surface	Description of Construction Controls (SWPPP/WPCP/TBD) ⁷	Post-Construction Treatment Control Type, Quantity ⁸	Anticipated Project Delivery Schedule		Construction Period	
		Co.	Route	Begin PM	End PM	RB ⁹											PA&ED Date	PS&E Date	Start Date	End Date
131	01-42780	Lake	20, 29, 53	VAR	VAR	5	Culvert Rehabilitation	Clear Lake, Cache Creek, Harley Gulch, Putah Creek, Lower Blue Lake, Scotts Creek, Tule Lakes, Blue Lakes	Y	-	-	0.75	0.12	0	WPCP	E	12/1/2016	2/10/2018	10/1/2018	1/1/2022
132	01-0E820	Lake	VAR	VAR	VAR	5	East Lake County TMS	Clear Lake	N	-	-	0	0	0	WPCP	E	7/1/2019	7/13/2020	12/17/2020	11/18/2022
133	01-0H750	Lake	VAR	VAR	VAR	5	Emergency Project to Inspect Overhead Doors at Maintenance Stations Throughout District 1		N	-	-	0	0	0	FPCP	E			1/1/2018	1/1/2019
134	01-0H220	Lake	29	10.08	10.88	5	Construct Maintenance Turnouts near Putah Creek Bridge	Crazy Creek (Putah Creek)	N	-	-	< 1	TBD	TBD	WPCP	C	9/01/2021	1/01/2024	7/1/2024	12/1/2024
135	01-0H360	Lake/Mendocino	20	0	43	1 and 5	Bonded Wearing Course, Striping and MBGR	Clear Lake, Cold Creek (Cache Creek)	N	-	-	<1	0	0	WPCP	E	10/11/2017	10/1/2018	5/1/2019	11/1/2020
136	01-0H210	Lake/Mendocino	175	VAR	VAR	1 and 5	Emergency Storm Damage Slope Repairs near Hopland	McDowell Creek (Russian River), Scotts Creek (Clear Lake)	Y	RGP5	-	TBD	0	0	WPCP	E	2/25/2017		4/10/2017	3/15/2019
137	01-0C691	Lake/Mendocino	1, 20, 128, 162	VAR	VAR	1 and 5	Roadside Radio Stations	Pacific Ocean, Russian River, Navarro River, Outlet Creek, Clear Lake	N	-	-	< 1	0	0	WPCP	E	4/7/2015	11/14/2017	5/1/2018	12/1/2018
138	01-0H620	Lake/Mendocino	101, 20	VAR	VAR	1 and 5	Bridge Deck Preservation	Russian River, SF Eel River	N	WDR	-	<1	0	0	WPCP	E	10/1/2018	10/1/2018	5/1/2019	11/1/2019
139	01-0H960	Lake/Mendocino	101, 20, 29, 53	VAR	VAR	1 and 5	Replace Thermoplastic Stripe and Pavement Delineation	Eel River, Russian River, Clear Lake	N	-	-	< 1	0	0	WPCP	E	8/1/2018	12/31/2018	5/1/2019	11/1/2020
140	01-0E830	Lake/Mendocino	175, 29	VAR	VAR	1 and 5	Mt. Konocti Upgrade Traffic Monitoring Stations	Clear Lake	N	-	-	< 1	0	0	WPCP	E	7/1/2019	7/13/2020	12/17/2020	11/18/2022

Table 6-1: District 1 Anticipated Project Development and Construction Schedule

No.	EA	Project Location					Project Description ^{1,2}	Water Bodies Within or Adjacent to Project Limits ³	Dredge and Fill Activities (Y/N/NA) ⁴	Other Regional Water Board Permits Required ⁵	Impacts of Potential and Actual Project's Discharge ⁶	Disturbed Soil Area (acres)	Area of New Impervious Surface (acres)	Percentage of New Impervious Surface to Percentage of Existing Impervious Surface	Description of Construction Controls (SWPPP/WPCP/TBD) ⁷	Post-Construction Treatment Control Type, Quantity ⁸	Anticipated Project Delivery Schedule		Construction Period	
		Co.	Route	Begin PM	End PM	RB ⁹											PA&ED Date	PS&E Date	Start Date	End Date
141	01-0J200	Lake/Mendocino	20, 101, 128	VAR	VAR	1 and 5	South Area Bridge Repair	Russian River, Crawford Creek, McNab Creek, Robinson Creek, Indian Creek (Navarro River), Mapple Creek (Navarro River), Beebe Creek (Navarro River)	N	WDR	-	< 1	0	0	WPCP	E	10/1/2019	12/31/2019	5/1/2020	11/1/2021
142	01-0E850	Lake/Mendocino	20, 29, 101, 162, 175	VAR	VAR	1 and 5	LaDicino Guardrail Upgrade	Clear Lake, Russian River, Outlet Creek (SF Eel River)	N	-	-	< 1	0	0	WPCP	E	7/13/2018	5/10/2019	12/1/2019	10/1/2023
143	01-0F440	Mendocino	1	0	15	1	Mendocino to Sonoma CAPM	Garcia River (Pacific Ocean)	N	-	-	0	0	0	WPCP	E	12/1/2018	10/1/2019	3/15/2020	10/15/2020
144	01-0C720	Mendocino	1	0.6	1	1	Downtown Gualala Enhancements	Gualala River (Pacific Ocean)	Y	-	-	1.92	1.3	34	SWPPP	C	9/13/2019	8/14/2020	8/13/2021	10/14/2022
145	01-0F650	Mendocino	1	4.64	58.78	1	Men 1 Fish Passage Remediation	Fish Rock Gulch, Mitchell Creek, Digger Creek, (Pacific Ocean)	Y	-	-	2.19	0.25	36	SWPPP	C	7/1/2020	11/1/2021	4/15/2022	1/15/2024
146	01-0F710	Mendocino	1	6.5	9.5	1	Widen Shoulders and Install Rumble Strips	Garcia River (Pacific Ocean)	Y	-	-	0.92	0.18	21	WPCP	C	1/16/2020	10/15/2020	9/9/2021	10/15/2022
147	01-0H390	Mendocino	1	18.5	18.5	1	Garcia River Bridge Scour Mitigation	Garcia River (Pacific Ocean)	Y	-	-	> 1	TBD	TBD	SWPPP	C	12/24/2020	2/6/2023	9/11/2023	3/7/2025
148	01-0E110	Mendocino	1	31.4	31.4	1	Elk Creek Bridge Rail Rehabilitation	Elk Creek (Pacific Ocean)	Y	-	-	TBD	TBD	TBD	TBD	C	1/17/2020	9/18/2020	8/27/2021	10/1/2023

Table 6-1: District 1 Anticipated Project Development and Construction Schedule

No.	EA	Project Location					Project Description ^{1,2}	Water Bodies Within or Adjacent to Project Limits ³	Dredge and Fill Activities (Y/N/NA) ⁴	Other Regional Water Board Permits Required ⁵	Impacts of Potential and Actual Project's Discharge ⁶	Disturbed Soil Area (acres)	Area of New Impervious Surface (acres)	Percentage of New Impervious Surface to Percentage of Existing Impervious Surface	Description of Construction Controls (SWPPP/WPCP/TBD) ⁷	Post-Construction Treatment Control Type, Quantity ⁸	Anticipated Project Delivery Schedule		Construction Period	
		Co.	Route	Begin PM	End PM	RB ⁹											PA&ED Date	PS&E Date	Start Date	End Date
149	01-OH600	Mendocino	1	33.7	51	1	Pavement Rehabilitation	Greenwood Creek (Pacific Ocean)	N	-	-	0	0	0	WPCP	E	1/12/2021	2/22/2023	9/26/2023	3/24/2025
150	01-OJ090	Mendocino	1	37	38.5	1	Emergency Slipout Repair	Alder Creek (Pacific Ocean)	N	-	-	< 1	0	0	WPCP	E	2/25/2018	4/1/2018	4/6/2018	4/1/2020
151	01-OC550	Mendocino	1	41.8	42.3	1	Navarro Ridge Safety Project-MBGR	Navarro River (Pacific Ocean)	Y	-	-	2.5	0.63	45	SWPPP	C	7/12/2019	1/17/2020	10/16/2020	10/15/2021
152	01-OE940	Mendocino	1	42.3	42.5	1	Navarro Ridge Drainage Reconstruction	Navarro River (Pacific Ocean)	Y	-	-	0.5	0.13	37	WPCP	E	7/12/2019	1/17/2020	11/6/2020	10/15/2021
153	01-40140	Mendocino	1	42.4	43.3	1	Salmon River Bridge Replacement	Salmon River (Pacific Ocean)	Y	-	-	> 1	TBD	TBD	SWPPP	C	3/1/2020	7/1/2021	10/1/2022	10/15/2026
154	01-40110	Mendocino	1	43.3	44.2	1	Albion River Bridge Replacement	Albion River (Pacific Ocean)	Y	-	-	> 1	TBD	TBD	SWPPP	C	3/1/2020	7/1/2021	10/1/2022	10/15/2026
155	01-43480	Mendocino	1	51.87	51.87	1	Men 1 Three Bridge Rail Upgrade and Widening	Little River, Russian Gulch, Jack Peters Creek (Pacific Ocean)	Y	-	-	3	0.63	13	SWPPP	C	8/1/2019	1/15/2020	11/13/2020	10/14/2022
156	01-43481	Mendocino	1	52.4	52.9	1	Russian Gulch Bridge Replacement	Russian Gulch	Y	-	-	2	0.6	26	SWPPP	C	8/14/2020	3/18/2022	10/14/2022	10/17/2025
157	01-OB750	Mendocino	1	56.7	56.7	1	Install Traffic Management Systems	Noyo River (Pacific Ocean)	N	-	-	< 1	0	0	WPCP	E	12/1/2015	-	12/1/2020	12/1/2021
158	01-OE111	Mendocino	1	59.7	59.7	1	Hare Creek Bridge Rail Upgrade	Hare Creek (Pacific Ocean)	TBD	-	-	TBD	TBD	TBD	TBD	C	10/1/2020	12/1/2022	12/1/2022	10/1/2024
159	01-OB220	Mendocino	1	59.8	62.11	1	Fort Bragg ADA	Noyo River (Pacific Ocean)	N	-	-	< 1	0	0	WPCP	E	1/1/2020	1/1/2021	11/1/2021	12/1/2023
160	01-36270	Mendocino	1	62.1	78.9	1	Pudding Creek CAPM	Pudding Creek (Pacific Ocean)	N	-	-	< 1	0	0	WPCP	E	11/16/2018	5/24/2019	10/1/2019	10/16/2020
161	01-OG600	Mendocino	1	65.13	65.49	1	Men 1 Shoulder Widening	Pudding Creek (Pacific Ocean)	Y	-	-	0.5	0.37	0	WPCP	BIOSWL	10/15/2020	9/15/2021	9/15/2022	10/13/2023

Table 6-1: District 1 Anticipated Project Development and Construction Schedule

No.	EA	Project Location					Project Description ^{1,2}	Water Bodies Within or Adjacent to Project Limits ³	Dredge and Fill Activities (Y/N/NA) ⁴	Other Regional Water Board Permits Required ⁵	Impacts of Potential and Actual Project's Discharge ⁶	Disturbed Soil Area (acres)	Area of New Impervious Surface (acres)	Percentage of New Impervious Surface to Percentage of Existing Impervious Surface	Description of Construction Controls (SWPPP/WPCP/TBD) ⁷	Post-Construction Treatment Control Type, Quantity ⁸	Anticipated Project Delivery Schedule		Construction Period	
		Co.	Route	Begin PM	End PM	RB ⁹											PA&ED Date	PS&E Date	Start Date	End Date
162	01-OG060	Mendocino	1	71.26	71.36	1	Abalobadiah Shoulder Widening	Abalobadiah Creek, Wages Creek, Usal Creek, Pacific Ocean	TBD	-	-	> 1	TBD	TBD	SWPPP	C	11/15/2019	9/17/2020	9/16/2021	10/14/2022
163	01-49620	Mendocino	1	75.5	88.9	1	Westport Culverts Drainage System Restoration near Cottoneva Creek	Cottoneva Creek, Usal Creek, Pacific Ocean	Y	-	-	> 1	TBD	TBD	SWPPP	C	11/15/2019	4/1/2020	8/1/2020	10/1/2021
164	01-OH270	Mendocino	1	VAR	VAR	1	Manchester and Fort Bragg Maintenance Station Modifications	Garcia River, Pudding Creek, (Pacific Ocean)	N	-	-	< 1	0	0	WPCP	E	11/5/2020	12/19/2022	7/26/2023	1/21/2025
165	01-OE860	Mendocino	20	16.8	17.2	1	Camp 20 Curve Improvement and Shoulder Widening	NF Big River, Big River	Y	-	-	3.4	1.1	79	SWPPP	BIOSTP, BIOSWL	9/4/2018	2/21/2019	11/14/2019	10/15/2020
166	01-OH450	Mendocino	20	19.1	19.1	1	James Creek Curve Improvement	NF Big River, Big River	Y	-	-	1.2	0.87	TBD	SWPPP	C	3/1/2020	6/10/2021	10/17/2021	1/1/2023
167	01-OG430	Mendocino	20	24.7	24.9	1	Shoulder Widening Near Willits	NF Big River, Big River	N	-	-	0.7	0.2	43	WPCP	E	2/1/2019	3/3/2020	8/15/2020	9/1/2021
168	01-OF140	Mendocino	20	26.1	32.8	1	Imulco Road RHMA and Gap Graded	Beachtel Creek (Outlet Creek), Eel River	N	-	-	< 1	0	0	WPCP	E	10/27/2015	10/1/2018	5/1/2019	11/1/2020
169	01-OG280	Mendocino	20	30.7	31.2	1	Men 20 Widen Shoulders Near Cropley Lane	Beachtel Creek, Eel River	N	-	-	> 1	< 1	0	SWPPP	E	7/1/2018	8/1/2018	12/1/2018	10/1/2019
170	01-OE090	Mendocino	20	33.4	34.2	1	Calpella Two Bridge Replacement	Russian River	Y	-	-	1.5	2.83	TBD	SWPPP	C	9/1/2019	4/1/2021	9/1/2021	3/1/2024
171	01-OH940	Mendocino	20	33.5	34	1	Russian River Bridge Deck Rehabilitation	Russian River	N	WDR	-	< 1	0	0	WPCP	E	3/22/2018	6/13/2018	8/1/2018	11/1/2019
172	01-OE470	Mendocino	20	37.84	38.34	1	Men 20 Potter Valley Road Resurfacing	East Fork Russian River, Cold Creek (Russian River)	N	-	-	< 1	0	0	WPCP	E	12/1/2016	12/26/2017	6/14/2018	12/1/2019
173	01-46630	Mendocino	101	0	9.6	1	Hopland CAPM	Cumminskey Creek, Russian River	N	-	-	< 1	0	0	WPCP	E	9/1/2018	4/15/2019	10/1/2019	2/1/2021
174	01-OB500	Mendocino	101	3.7	5.3	1	Pergrine Slides	Cumminskey Creek, Russian River	Y	-	-	1.38	0	0	SWPPP	E	4/3/2015	3/28/2016	11/3/2016	12/2/2019
175	01-OH570	Mendocino	101	21	26.3	1	Ukiah Pavement Rehabilitation	Orrs Creek, Russian River	N	-	-	< 1	0	0	WPCP	E	9/1/2021	10/1/2022	2/15/2023	11/1/2023

Table 6-1: District 1 Anticipated Project Development and Construction Schedule

No.	EA	Project Location					Project Description ^{1,2}	Water Bodies Within or Adjacent to Project Limits ³	Dredge and Fill Activities (Y/N/NA) ⁴	Other Regional Water Board Permits Required ⁵	Impacts of Potential and Actual Project's Discharge ⁶	Disturbed Soil Area (acres)	Area of New Impervious Surface (acres)	Percentage of New Impervious Surface to Percentage of Existing Impervious Surface	Description of Construction Controls (SWPPP/WPCP/TBD) ⁷	Post-Construction Treatment Control Type, Quantity ⁸	Anticipated Project Delivery Schedule		Construction Period	
		Co.	Route	Begin PM	End PM	RB ⁹											PA&ED Date	PS&E Date	Start Date	End Date
176	01-OH860	Mendocino	101	26	26.4	1	North State Street Onramps Seismic Retrofit	Orrs Creek, Russian River	TBD	-	-	> 1	0.7	TBD	SWPPP	C	8/25/2021	6/26/2023	12/17/2023	1/1/2025
177	01-26204	Mendocino	101	47.2	47.3	1	Sherwood Road Geometric Upgrades- Replace Intersection	Mill Creek, Outlet Creek, Eel River	N	-	-	2.03	0.26	57	SWPPP	E	5/28/2015	9/7/2017	4/17/2018	12/31/2019
178	01-26206	Mendocino	101	48	48	1	Willits Bypass Mitigation	Heahl Creek, Eel River	N	-	-	> 1	0	0	SWPPP	E	-	12/12/2014	7/16/2015	12/31/2020
179	01-OH550	Mendocino	101	55	64.73	1	Longvale Pavement Rehabilitation	Long Valley Creek, Eel River	N	-	-	< 1	0	0	WPCP	E	8/25/2021	9/26/2022	2/2/2023	1/1/2024
180	01-OC450	Mendocino	101	58.9	82.5	1	Moss Cove, Irvine Lodge, and Empire Camp SRRA Rehabilitation	Rattlesnake Creek, Long Valley Creek, Sherwood Creek, Eel River	Y	ROWD	-	< 1	0	0	WPCP	E	6/05/2018	5/1/2020	10/1/2020	12/1/2024
181	01-48420	Mendocino	101	63.9	105.9	1	Men 101 Culvert Rehabilitation Project	Long Valley Creek, Ten Mile Creek, Rattlesnake Creek, Standley Creek, Fish Creek, SF Eel River	TBD	-	-	> 1	TBD	TBD	SWPPP	C	2/1/2020	1/8/2021	6/1/2021	11/1/2023
182	01-OH330	Mendocino	101	69.3	74.8	1	Laytonville Overlay	Ten Mile Creek (SF Eel River)	N	-	-	< 1	0	0	WPCP	E	3/27/2018	12/15/2018	7/1/2019	11/1/2020
183	01-OH910	Mendocino	101	VAR	VAR	1	Wilits HMA Overlay	Eel River, Outlet Creek	N	-	-	< 1	0	0	WPCP	E	12/1/2018	3/15/2019	7/15/2019	11/1/2020
184	01-OH970	Mendocino	101	VAR	VAR	1	Replace Thermoplastic Stripe and Marker Delineation	Eel River	N	-	-	< 1	0	0	WPCP	E	9/1/2019	12/31/2019	5/1/2020	11/1/2021
185	01-41550	Mendocino	128	0	17.9	1	Flynn Creek CAPM and MBGR Upgrade	Upper Navarro River	N	-	-	< 1	0	0	WPCP	E	12/29/2017	4/12/2018	11/15/2018	10/15/2020
186	01-OJ100	Mendocino	128	0	5	1	Emergency Culvert Repairs	Navarro River	N	ROWD	-	< 1	0	0	WPCP	E	2/25/2018	4/1/2018	10/1/2018	4/1/20.
187	01-OB530	Mendocino	162	11.5	11.8	1	Rodeo Creek Slide II	Rodeo Creek, Eel River	TBD	-	-	TBD	TBD	TBD	TBD	C	3/1/2020	2/10/2021	2/1/2022	3/1/2024
188	01-OG480	Mendocino	162	17.4	17.8	1	Superelevation Improvement and HFST	Middle Fork Eel River	N	-	-	0.9	0	0	WPCP	E	5/1/2018	2/26/2019	8/17/2019	1/1/2021
189	01-OA840	Mendocino	271	17.7	18	1	McCoy Creek Bridge Replacement	McCoy Creek, SF Eel River	Y	-	-	1	0.37	37	SWPPP	BIOSWL	6/25/2018	4/12/2018	11/15/2018	12/1/2020

Table 6-1: District 1 Anticipated Project Development and Construction Schedule

No.	EA	Project Location					Project Description ^{1,2}	Water Bodies Within or Adjacent to Project Limits ³	Dredge and Fill Activities (Y/N/NA) ⁴	Other Regional Water Board Permits Required ⁵	Impacts of Potential and Actual Project's Discharge ⁶	Disturbed Soil Area (acres)	Area of New Impervious Surface (acres)	Percentage of New Impervious Surface to Percentage of Existing Impervious Surface	Description of Construction Controls (SWPPP/WPCP/TBD) ⁷	Post-Construction Treatment Control Type, Quantity ⁸	Anticipated Project Delivery Schedule		Construction Period	
		Co.	Route	Begin PM	End PM	RB ⁹											PA&ED Date	PS&E Date	Start Date	End Date
190	01-OH780	Mendocino	271	19.6	20	1	McCoy Creek Sinks Storm Damage	McCoy Creek, SF Eel River	TBD	-	-	TBD	TBD	TBD	TBD	C	5/26/2021	7/6/2023	2/9/2024	8/5/2025
191	01-OH630	Mendocino	1, 128	VAR	VAR	1	Men 1 and Men 128 Bridge Preservation at Six Locations	Schooner Gulch, Alder Creek, Navarro River, Salmon Creek, Casper Creek, Anderson Creek	N	WDR	-	< 1	0	0	WPCP	E	10/1/2018	9/1/2018	5/1/2019	11/1/2019
192	01-OA130	Mendocino	101, 162	VAR	VAR	1	Russian River and Eel River Bridge Seismic Retrofit	Bloody Run Creek (Upper Eel River), Cumminskey Creek, Russian River	Y	-	-	> 1	TBD	TBD	SWPPP	C	10/1/2021	12/15/2022	8/1/2023	2/1/2027
193	01-48770	Mendocino	101, 271	11.80/16.16	26.73/19.98	1	Culvert Rehabilitation	SF Eel River	Y	-	-	TBD	TBD	TBD	TBD	E	3/1/2020	1/1/2021	8/1/2021	12/1/2022
194	01-OG650	Mendocino	101, 271	VAR	VAR	1	Emergency Piercy Slide Removal and Slope Stabilization	SF Eel River	Y	-	-	< 1	0	0	WPCP	E	9/15/2016	12/1/2016	12/10/2016	12/1/2019
195	01-OG050	VAR	VAR	VAR	VAR	1 and 5	District Wide Curve Warning Signs	-	N	-	-	< 1	0	0	WPCP	E	4/1/2019	9/1/2019	4/1/2020	9/1/2021

Treatment Control Status Legend	
BMP Device Types:	
BIOSTP	Biofiltration Strips
BIOSWL	Biofiltration Swales
C	Under Consideration
CNTBOX	Gross Solids Removal Devices (Inclined Screen)
DETBAS	Detention Basins
DPPIA	Design Pollution Prevention Infiltration Area*
DWFD	Dry Weather Flow Diversion
E	Exempt
INDBAS	Infiltration Basins*
INDTRE	Infiltration Trench*
LNGTBE	Gross Solids Removal Devices (Linear Radial)
MCTT	Multi-Chambered Treatment Trains
MF-ADS	Austin Sand Filters
MF-DSF	Delaware Sand Filters
Other	Other (specify type)
SA	Stabilization Areas
TRCSND	Traction Sand Traps
WETBAS	Wet Basins

* Water quality volume infiltrates within the right of way. (When this is demonstrated for at least 90% of the WQV, other types of treatment BMPs are not considered unless there is a location-specific requirement.)

Table 6-2 lists the planned maintenance projects that will disturb soil.

Table 6-2: District 1 Anticipated Significant Road Maintenance Activities

No.	Co.	Route	Beg PM	End PM	Regional Board	Description	Water Bodies Affected ¹⁰	Other Regional Water Board Permits Required ¹¹	Potential and Actual Impacts of Project's Discharge ¹²	Disturbed Soil Area (acres)	Area of New Impervious Surface (acres)	Percentage of New Impervious Surface to Existing Impervious Surface	Description of Construction Controls (SWPPP/ WPCP/ TBD/NA) ¹³	Post-Construction Treatment Control Type, Quantity ¹⁴	Start Date	Completion Date
The Maintenance Storm Water Coordinator does not anticipate any maintenance activities that fall outside the realm of routine maintenance.																

Treatment Control Status Legend	
BMP Device Types:	
BIOSTP	Biofiltration Strips
BIOSWL	Biofiltration Swales
C	Under Consideration
CNTBOX	Gross Solids Removal Devices (Inclined Screen)
DETBAS	Detention Basins
DPPIA	Design Pollution Prevention Infiltration Area*
DWFD	Dry Weather Flow Diversion
E	Exempt
INDBAS	Infiltration Basins*
INDTRE	Infiltration Trench*
LNGTBE	Gross Solids Removal Devices (Linear Radial)
MCTT	Multi-Chambered Treatment Trains
MF-ADS	Austin Sand Filters
MF-DSF	Delaware Sand Filters
Other	Other (specify type)
SA	Stabilization Areas
TRCSND	Traction Sand Traps
WETBAS	Wet Basins

* Water quality volume infiltrates within the right of way. (When this is demonstrated for at least 90% of the WQV, other types of treatment BMPs are not considered unless there is a location-specific requirement.)

¹⁰ Receiving waters within or adjacent to maintenance activity designated as “303(d) (constituent type).” Activity adjacent to Drinking Water Reservoir or Ground Water Recharge Facilities designated as “DW.”

¹¹ Regional Water Board Permits required other than Construction General Permit, such as Clean Water Act Section 401 water quality certification, Waiver of Discharge Requirements, Dewatering Permits, Bridge Painting WDRs, etc.

¹² This information may come from the Water Quality Assessment Report prepared for each project, a Water Quality Technical Memorandum, or other document that evaluates the water quality impacts of a project.

¹³ A description of the Construction Controls is available in the project’s Storm Water Pollution Prevention Plan (SWPPP), Water Pollution Control Plan (WPCP), is To Be Determined (TBD) if the Disturbed Soil Area is unavailable, or is Not Applicable (NA) because there is no Disturbed Soil Area associated with the project.

¹⁴ Treatment Control Status identified by: device type/number of devices, exempt (“E”), or under consideration (“C”). See Treatment Control Status Legend below for device type abbreviations.

Table 6-3 lists the District's planned monitoring activities.

Table 6-3: District 1 Monitoring Activities

Statewide Monitoring Program Activities	
ASBS Core Monitoring Sites	
District sites include the following: Saunders Reef (ASBS 5) <ul style="list-style-type: none"> • SAU019A • SAU020A • SAU016A • SAU015 • SAU013A • SAU11A • SAU009A • SAU006A Redwood National Park (ASBS 8) <ul style="list-style-type: none"> • RED014 • RED015 • RED018A • RED017A • RED023 • RED027 	
ASBS Ocean Receiving Water and Reference Monitoring Sites	
District sites include the following: Saunders Reef (ASBS 5) <ul style="list-style-type: none"> • SAU008 • SAU021-ORW Redwood National Park (ASBS 8) <ul style="list-style-type: none"> • RED027 • RED028-ORW 	
District Monitoring Activities	
Eureka-Arcata Corridor Tide Gate Monitoring <ul style="list-style-type: none"> • Water quality data (DO, Temperature, Conductivity, Salinity) collected at 8 locations 	

This page was intentionally left blank.

7 Region-Specific Activities

Section 7 of the DWP identifies the applicable region-specific activities that District 1 has planned for fiscal year 2019-20 to comply with Attachment V of the Conformed NPDES Permit.

North Coast Region

Riparian Vegetation Removal

Discharges associated with riparian vegetation removal are avoided and minimized by the following:

1. Vegetation removal adjacent to receiving waters is restricted to the May 15 to October 15 work window.
2. Vegetation that must be removed outside of the May 15 to October 15 work window due to migratory bird nesting restrictions is cut and left in place until May 15.
3. No track wheeled vehicles are used during the removal of vegetation outside the May 15 to October 15 work window.
4. Perimeter control BMPs are installed.
5. Only the minimum amount of vegetation is removed to allow access to the work area.

This page was intentionally left blank.

8 DWP Noncompliance and Improvements

Section 8 of the DWP identifies the deviations that occurred from the prior DWP that resulted or will result in noncompliance with the Conformed NPDES Permit or SWMP. In addition, it describes the improvements that were performed in response to the incidents of noncompliance. No DWP noncompliance incidents or improvements were identified for District 1.

This page was intentionally left blank.