

**California Department of Transportation  
Stormwater Management Program  
District 2 Work Plan**

Fiscal Year

**2019-2020**

CTSW-RT-18-379.06.2



California Department of Transportation  
Division of Environmental Analysis  
Stormwater Management Program  
1031 Butte Street, Redding, California 96001

<http://www.dot.ca.gov/hq/env/stormwater>

**October 1, 2018**



For individuals with sensory disabilities, this document is available in alternate formats upon request. Please call or write to the Stormwater Liaison, Caltrans Division of Environmental Analysis, MS-27, P.O. Box 942874, Sacramento, CA 94274-0001, (916) 653-8896 Voice, or dial 711 to use a relay service.

**California Department of Transportation  
District 2 Certification  
District Work Plan 2019-20**

I certify under penalty of law that this document and all attachments were prepared under my direction or supervision in accordance with a system designed to assure that qualified personnel properly gather and evaluate the information submitted. Based on my inquiry of the person or persons who manage the system, or those persons directly responsible for gathering the information, the information submitted is to the best of my knowledge and belief, true, accurate, and complete. I am aware that there are significant penalties for submitting false information, including the possibility of fine and imprisonment of knowing violations. [40 CFR 122.22(d)]



---

**Dave Moore**

**District 2**



---

**Date**

This page was intentionally left blank.

# Table of Contents

<b>1</b>	<b>Introduction .....</b>	<b>1-1</b>
<b>2</b>	<b>District Personnel and Responsibilities .....</b>	<b>2-1</b>
<b>3</b>	<b>District Facilities and Water Bodies .....</b>	<b>3-1</b>
<b>4</b>	<b>Drinking Water Reservoirs and Recharge Facilities.....</b>	<b>4-1</b>
<b>5</b>	<b>Slopes Prone to Erosion .....</b>	<b>5-1</b>
<b>6</b>	<b>Implementation.....</b>	<b>6-1</b>
<b>7</b>	<b>Region-Specific Activities .....</b>	<b>7-1</b>
<b>8</b>	<b>DWP Noncompliance and Improvements .....</b>	<b>8-1</b>

## Figures

Figure 2-1: District 2 Organizational Chart .....	2-5
Figure 5-1: District 2 2018 Areas Prone to Erosion.....	5-3

## Tables

Table 2-1: District 2 Stormwater Personnel and Responsibilities .....	2-3
Table 2-2: District 2 Signatory Authority for Key Documents.....	2-4
Table 4-1: District 2 Drinking Water Reservoirs and Recharge Facilities .....	4-1
Table 5-1: District 2 Inventory of Road Segments Prone to Erosion.....	5-1
Table 6-1: District 2 Anticipated Project Development and Construction Schedule.....	6-3
Table 6-2: District 2 Anticipated Significant Road Maintenance Activities .....	6-9
Table 6-3: District 2 Monitoring Activities .....	6-11

This page was intentionally left blank.

## General Information about the District Work Plan

The District Work Plans (DWPs) describe the organization of each California Department of Transportation (Caltrans) District's stormwater program and outline the planned stormwater activities for the upcoming fiscal year. They are prepared and submitted on October 1 each year. Since the DWP is District-specific, each Regional Water Quality Control Board (RWQCB or Regional Board) is provided a copy of the DWPs relevant to their jurisdiction.

This DWP presents information about District 2's water bodies, Best Management Practices (BMPs), and monitoring programs. It describes how the District will specifically implement the requirements of the Statewide Stormwater Management Plan (SWMP) during fiscal year 2019-20. Implementation activities will be conducted in accordance with the procedures presented in the SWMP. In addition, this DWP fulfills Provision E.3.b of the *National Pollutant Discharge Elimination System (NPDES) Statewide Storm Water Permit Waste Discharge Requirements (WDRs) for State of California Department of Transportation* (Order Number 2012-0011-DWQ, NPDES Number CAS000003, Effective July 1, 2013) (NPDES Permit). The NPDES Permit was amended by Orders WQ 2014-0006-EXEC (January 17, 2014), WQ 2014-0077-DWQ (May 20, 2014), and WQ 2015-0036-EXEC (April 7, 2015). A conformed NPDES Permit was issued on April 7, 2015 (Conformed NPDES Permit), available on the California State Water Resources Control Board's (SWRCB) website:

[http://www.waterboards.ca.gov/board\\_decisions/adopted\\_orders/water\\_quality/2012/wq2012\\_0011\\_dwq\\_conformed\\_signed.pdf](http://www.waterboards.ca.gov/board_decisions/adopted_orders/water_quality/2012/wq2012_0011_dwq_conformed_signed.pdf)

The NPDES Permit was further amended by Order WQ 2017-0026-EXEC on November 27, 2017. This permit amendment describes the primary modifications to several Areas of Special Biological Significance (ASBS) sampling locations and incorporation of compliance units crediting due to the SWRCB's adoption of the trash provisions on April 7, 2015 (effective on December 3, 2015).

The DWP's eight sections describe how the District plans to implement the stormwater program during the upcoming fiscal year. Section 1 introduces the DWP, describes its organizational structure, and identifies the key goals and commitments made by the District for the upcoming fiscal year. Section 2 describes the personnel with stormwater operations responsibilities in the District. In Section 3, the District's facilities are listed and categorized by type and location. Section 4 describes and identifies the high-risk locations where spills from the District's owned rights-of-way, roadways or facilities can discharge directly to a drinking water reservoir or ground water recharge facility. In Section 5, the District's road segments that are prone to erosion are identified. Section 6 summarizes the District's implementation activities, including projects that will be in the design and construction phases during the fiscal year, maintenance projects, and planned stormwater monitoring activities. Section 7 identifies the planned region-specific activities (if applicable) to address the requirements listed in Attachment V of the Conformed NPDES Permit. Section 8 identifies deviations that occurred from the prior DWP that resulted or will result in noncompliance with the Conformed NPDES Permit or SWMP and describes improvements performed in response to the incidents of noncompliance.

## District Goals and Commitments

District 2 goals and commitments will continue to focus on improving transportation while meeting regulatory and permitting requirement during the upcoming fiscal year. These include the following:

- Identify opportunities and manage appropriate risks to empower and encourage innovation, improve efficiency and quality, and streamline delivery of our products and services;

- Develop, foster and strengthen cooperative working relationships with our internal and external partners and stakeholders;
- Improve the safety of our transportation network for users and workers;
- Manage the core transportation activities in the District to ensure we are good stewards of our human, financial and environmental resources;
- Improve record keeping for ensuring District 2-specific stormwater permitting requirements are accurately reported.
- In cooperation with the Public Information Office, reinstate a public outreach campaign emphasizing litter and fire prevention and other indirect processes having potential to pollute waterways, and discuss how these may be avoided.



## **2 District Personnel and Responsibilities**

---

Section 2 of the DWP describes positions, addresses, and telephone numbers of personnel with responsibilities for stormwater operations within the District. This section also identifies positions having signatory authority for various notifications or documents required for submittal by a District (e.g., Project Registration Documents, including Notices of Intents or NOIs).

### **District NPDES Stormwater Coordinator**

Under the supervision of the North Region Chief Environmental Engineer, the NPDES Coordinator is the lead overseeing implementation of the Stormwater Management Plan (SWMP) in the District. The NPDES Coordinator serves as liaison with the Headquarters Water Quality Program and Regional Water Quality Control Board personnel.

Under the supervision of the North Region Chief Environmental Engineer, the NPDES Coordinator tasks include the following:

- Oversees implementation of the Stormwater Management Plan (SWMP) in the District.
- Serves as liaison with the Headquarters Water Quality Program and RWQCB personnel.
- Provides guidance on applicable stormwater regulatory requirements and policies.
- Responds to Notices of Violation (NOV) and/or enforcement actions issued by the RWQCBs, illicit connections/illegal discharges (IC/ID), non-compliance, and public inquiries made to the District regarding stormwater management issues.
- Distribute new stormwater information to coordinators from other functional units.
- Confirms stormwater-related forms and other compliance documents are submitted to RWQCBs.
- Prepares Water Quality Assessment Reports.
- Assists the Environmental Unit obtain other general and individual NPDES permits (i.e., dewatering).

### **Maintenance Coordinator**

Primary Maintenance Stormwater Coordinator tasks include communicating relevant SWMP needs to Maintenance personnel and serving as a point of contact for all Maintenance stormwater program inquiries. Specific Maintenance Coordinator tasks include:

- Coordinates stormwater training for District Maintenance personnel.
- Conducts Facility Pollution Prevention Plan (FPPP) inspections and prepare FPPPs.
- Reviews, monitors and evaluates best management practice (BMP) implementation and effectiveness for maintenance activities.
- Attends Maintenance Stormwater Advisory Team (MSWAT) meetings.
- Administers the vegetated slope inspection program.
- Initially responds to IC/IDs that are identified by field Maintenance personnel.
- Participates in construction contract acceptance review.
- Reviews and comments on draft stormwater permits.

- Reviews long form Stormwater Data Reports (SWDRs) to ensure compliance with Maintenance requirements and maintainability of stormwater control measures following construction completion.

## **Construction Coordinator**

The Construction Coordinator serves as the point of contact for all Construction Program stormwater inquiries and assists Resident Engineers (REs) in meeting stormwater related requirements. Other tasks include:

- Reviews Plans and Specifications to provide stormwater-related comments to Designers.
- Reviews design BMP selection and quantities for SWDR approval.
- Assists REs by reviewing Stormwater Pollution Prevention Plan (SWPPP) and Water Pollution Compliance Program (WPCP) documents.
- Attends project preconstruction meetings assisting REs to inform contractors about their stormwater responsibilities.
- Uploads Notice of Intent (NOI), Notice of Termination (NOT) and Change of Information (COI) into the Stormwater Multiple Application and Report Tracking System (SMARTS).
- Uploads Incident Report Forms for WPCP projects into SMARTS when required.
- Performs regular inspections of construction projects to evaluate compliance with regulatory permits and supply REs with a corrective actions list.
- Conducts monthly side-by-side project inspections with third party Independent Assurance (IA) reviewers.
- Helps coordinate stormwater training for Construction personnel.
- Conveys new regulatory requirements to Construction personnel.
- Assists responding to regulatory agencies regarding construction-related NOV's.
- Coordinates with Water Board personnel regarding project specifics.

## **Design Stormwater Coordinator**

The District Design Stormwater Coordinator assists Design Division personnel in addressing stormwater program requirements during a project's planning and design phase. Specific Design Stormwater Coordinator tasks include:

- Reviews, edits and signs SWDRs.
- Responds to Designers and Project Engineers' stormwater program inquiries, and relating regulatory changes that may affect project development.
- Assists Project Engineers in determining when Treatment BMPs are required, and provides guidance incorporating these into projects.
- Attends Project Development Team (PDT) meetings and provides information on current and future stormwater requirements that might affect a project.

## Public Affairs Coordinator

The Public Affairs Coordinator organizes and participates in conducting public information campaign activities in District 2. This includes planning public outreach targeting a diverse portion of the population and coordinating with local groups to arrange campaign presentations and activities.

## Encroachment Permits Coordinator

Encroachment Permits Coordinators serve as points of contact for all encroachment permit stormwater program inquiries and ensure external projects conducted within the Caltrans' right of way meet SWMP requirements.

## Landscape Architecture Coordinator

The Landscape Architecture Coordinator is responsible for planning and recommending temporary and permanent sediment source control BMPs for construction projects and signs SWDRs.

Table 2-1 lists staff members responsible for implementing the Stormwater Program.

*Table 2-1: District 2 Stormwater Personnel and Responsibilities*

Staff Name	Title	Phone No.	E-mail	Responsibility
Kevin Church	Chief, North Region Office of Environmental Engineering-North	(707) 445-5201	kevin.church@dot.ca.gov	Oversees Office of Environmental Engineering-North within Districts 1 and 2
Miguel Villicana	District NPDES Stormwater Coordinator	(530) 225-3333	miguel.villicana@dot.ca.gov	Primary contact for District 2 NPDES stormwater issues
Wesley Faubel	Design Coordinator	(530) 225-3412	wesley_faubel@dot.ca.gov	Assists Design, provides guidance on BMP selection and implementation during design, monitors for compliance with SWMP
Ted McDonald	North Region Construction Stormwater Coordinator-North Area	(530) 225-3579	ted.l.mcdonal@dot.ca.gov	Assists RE, inspects stormwater controls on construction sites, reviews SWPPPs/WPCPs
Joe Baltazar	District Maintenance Stormwater Coordinator	(530) 225-3376	joseph.baltazar@dot.ca.gov	Provides maintenance BMP selection guidance and implementation, monitors for compliance with SWMP
Fred Chaffin	District Encroachment Permits Stormwater Coordinator	(530) 225-3121	fred.chaffin@dot.ca.gov	Provides NPDES guidance to District 2 Encroachment Permits staff and permittees
Patrick Sullivan	Landscape Architect	(530) 225-3413	patrick.sullivan@dot.ca.gov	Provides guidelines for implementing erosion control measures at construction project sites

Table 2-2 lists individuals authorized to sign the documents, reports, and other information submitted by the District to either the SWRCB or the RWQCB(s). These individuals/positions may delegate

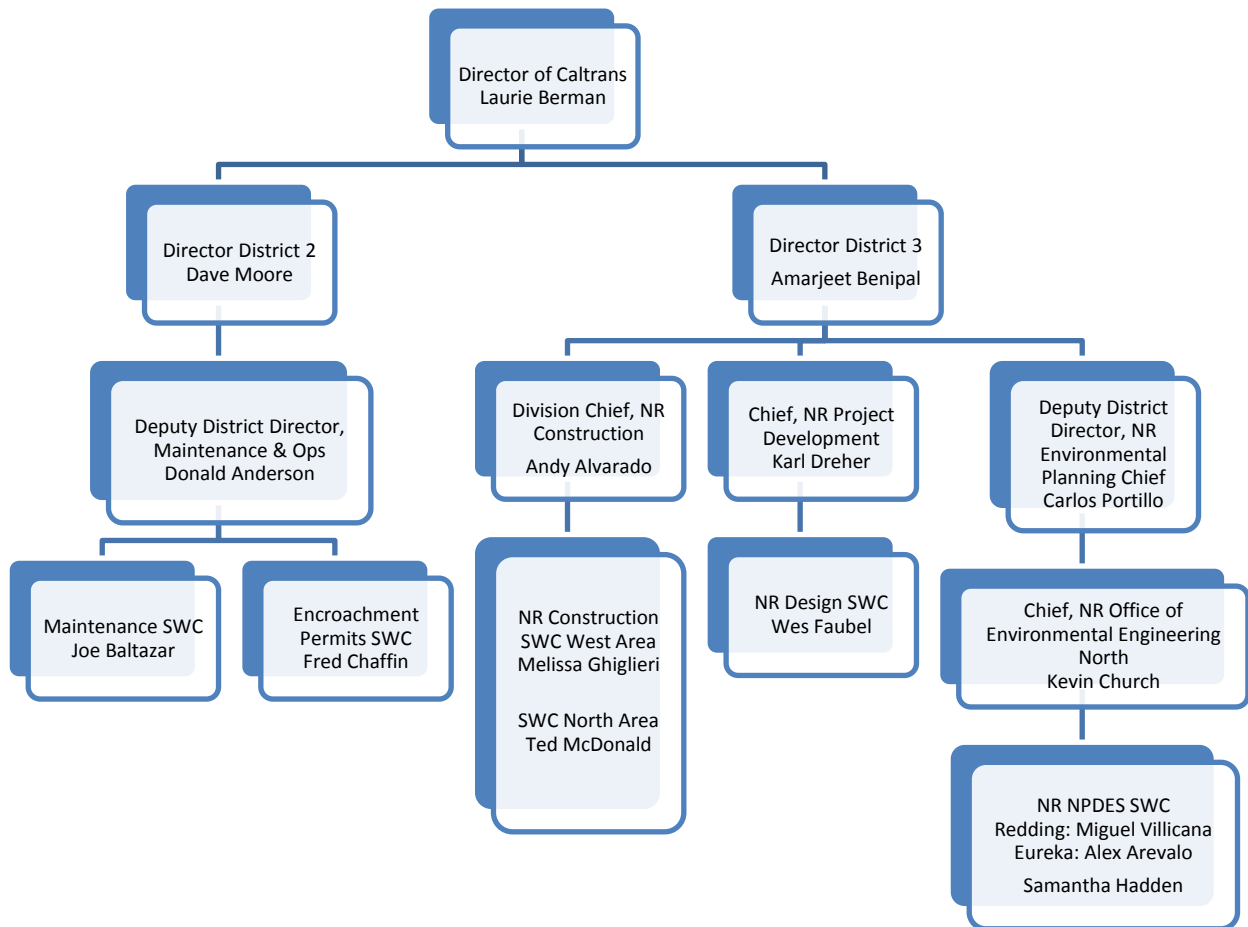
authorization to their staff to sign various documents and reports required for implementation of the Stormwater Program. It also includes delegation of signatory authority for key Conformed NPDES Permit and SWMP required documents.

***Table 2-2: District 2 Signatory Authority for Key Documents***

<b>Position or Individual</b>	<b>Phone No.</b>	<b>E-mail</b>	<b>Documents Authorized for Signatures</b>
Dave Moore District Director	(530) 225-3477	dave_moore@dot.ca.gov	All District Documents
Kevin Church	(707) 445-5201	Kevin.church@dot.ca.gov	All District Documents except District Work Plan
Ted McDonald	(530) 225-3579	ted.l.mcdonal@dot.ca.gov	SWPPP, Notice of Construction (NOC), Notice of Construction Completion (NCC), Notice and Report of Non-Compliance, Discharge or Threat of Discharge Notification
Joe Baltazar	(530) 225-2099	joseph.baltazar@dot.ca.gov	Notice and Report of Non-Compliance, Discharge or Threat of Discharge Notification, Report of Illegal Connection/Illicit Discharge (IC/ID), Incident Report Form
Fred Chaffin	(530) 225-3121	fred.chaffin@dot.ca.gov	SWPPPs, NOI/NOT, Notice and Report of Non-Compliance, Discharge or Threat of Discharge Notification, and Report of IC/ID, Incident Report Form
District 2 Project Managers	Various	Various	CWA Section 401 Water Quality Certification Applications and Requests for Reports of Waste Discharge Requirements.
Construction Engineers and Resident Engineers	-	-	SWPPPs, Notice and Report of Non-Compliance, Discharge or Threat of Discharge Notification, NOI/NOT, Incident Report Form

Figure 2-1 shows an organizational chart describing key persons with responsibilities for stormwater operations within the District.

*Figure 2-1: District 2 Organizational Chart*



This page was intentionally left blank.

### **3 District Facilities and Water Bodies**

---

Section 3 of the DWP identifies maintenance stations (including crew functions and street addresses), vista points, commercial vehicle enforcement areas, roadside rest areas, park and ride facilities, toll road and bridge plazas, equipment shops, and other Caltrans facilities. Facility Pollution Prevention Plans (FPPPs) are prepared and implemented at Maintenance facilities within the District's boundaries, such as maintenance stations, material storage facilities, and equipment shops. To comply with Department of Homeland Security policy, the table and map identifying these facilities is not available to the public. For more information, contact Caltrans' Office of Emergency Management or Division of Environmental Analysis.

This page was intentionally left blank.



## 4 Drinking Water Reservoirs and Recharge Facilities

Section 4 of the DWP describes and identifies the high-risk areas, which are locations where spills or other releases from District-owned rights-of-way, roadways, or facilities may discharge directly to municipal or domestic water supply reservoirs or ground water percolation facilities. Projects that potentially drain to these high-risk areas consider project features that enhance spill response.

Drinking water reservoirs and recharge facilities are areas such as locations where spills from District-owned ROWs or facilities can discharge directly to municipal or domestic water supply reservoirs or ground water percolation facilities. To generate the list of municipal, domestic water supply reservoirs, and ground water percolation facilities, the District first contacted known public and private water supply providers. From the information received, the District determined which facilities were susceptible to a direct spill from a District activity or facility. This determination was based on proximity between the water body and the District's facility, use characteristics of the facility, and the probable spill response time.

When planning projects within these defined areas, District 2 considers project design features for aiding in the prevention of accidental spills that could impact the area; these features are typically commensurate with safety improvements for reducing vehicle accidents. Examples of these features may include, but are not limited to, median barrier, guardrail, signalization, and vehicle restrictions. Features considered for improving spill response time typically include elongated drainage paths, call boxes, signage, or video surveillance.

A list of drinking water reservoirs and recharge facilities within District 2 is presented in Table 4-1.

*Table 4-1: District 2 Drinking Water Reservoirs and Recharge Facilities*

Road Segment/ Facility	County	Regional Board	Drinking Water Reservoir or Recharge Facility Area	Description	Comments
44/49.2	SHA	5	Manzanita Creek	Water for Lassen VNP – Manzanita Lake	1.5 miles to facility
151/0.0	SHA	5	Shasta Lake Intake	Water for City of Shasta Lake	0.3 miles to facility
299/16.7	SHA	5	Whiskeytown Lake Intake	Water for Clear Creek, Centerville and Shasta C.S.D.s	1.5 and .5 miles to facility
3/54.2	SIS	1	Lake Shastina Treatment Plant	Water for City of Montague	-
3/8.2	TRI	1	Hayfork – Ewing Reservoir	Water for Trinity Co. W.W. District #1	-

This page was intentionally left blank.

## 5 Slopes Prone to Erosion

Section 5 of the DWP identifies the road segments within District 2 that have slopes which are prone to erosion and sediment discharge. The road segments that are located in sensitive watersheds, or where there is an existing or potential threat to water quality, will be prioritized for implementing appropriate controls to the maximum extent practicable. In each Annual Report, the status of stabilization activities where applicable will be reported. Table 5-1 is District 2's inventory of vulnerable road segments where erosion occurs and stabilization may be required, or where rock cut slopes are located and rock falls have occurred.

*Table 5-1: District 2 Inventory of Road Segments Prone to Erosion*

Road Segment	County	Regional Board	Watershed	Scheduled Stabilization Date
Route 299 PM 25.77 – 72.25	Trinity	1	Trinity River – Upper and Lower Middle	Incorporated into projects as they occur Initiating treatment/stabilization project on Little Grass Valley Creek
Route 36 PM 10.26 – 41.14	Trinity	1	South Fork Trinity River and Hayfork Creek	Incorporated into projects as they occur
Route 36 0.0 – 10.26	Trinity	1	Mad River	Incorporated into projects as they occur
Route 3 PM 0.00 – 18.67	Trinity	1	South Fork Trinity River and Hayfork Creek	Incorporated into projects as they occur
Route 3 PM 18.67 – 30.85	Trinity	1	Trinity River – Upper Middle	Incorporated into projects as they occur
Route 3 PM 30.85 – 38.7	Trinity	1	Trinity River – Upper Middle	Incorporated into projects as they occur
Route 3 PM 38.7 – 85.06	Trinity	1	Trinity River - Upper	Incorporated into projects as they occur
Route 3 PM 0.0 – 9.5	Siskiyou	1	Scott River	Incorporated into projects as they occur Initiating stabilization project for slope PM 5.6/6.5
Route 3 PM 38.0 – 41.5	Siskiyou	1	Scott River	Incorporated into projects as they occur
Route 96 PM 23.27 – 105.76	Siskiyou	1	Klamath River	Incorporated into projects as they occur
Route 5 PM 19.5 – 23.0	Siskiyou	1	Shasta River	Incorporated into projects as they occur
Route 299 0.0 – 8.6	Shasta	5	Willow Creek	Incorporated into projects as they occur
Route 299 34.56 – 55.42	Shasta	5	South Fork Cow Creek	Incorporated into projects as they occur

Figure 5-1 is a map showing California State Highway System areas that required maintenance within District 2 in 2018, including rock cut slopes, landslides, and moderate soil erosion.

This page was intentionally left blank.

# District 2

## California State Highway System 2018 Areas Prone to Erosion

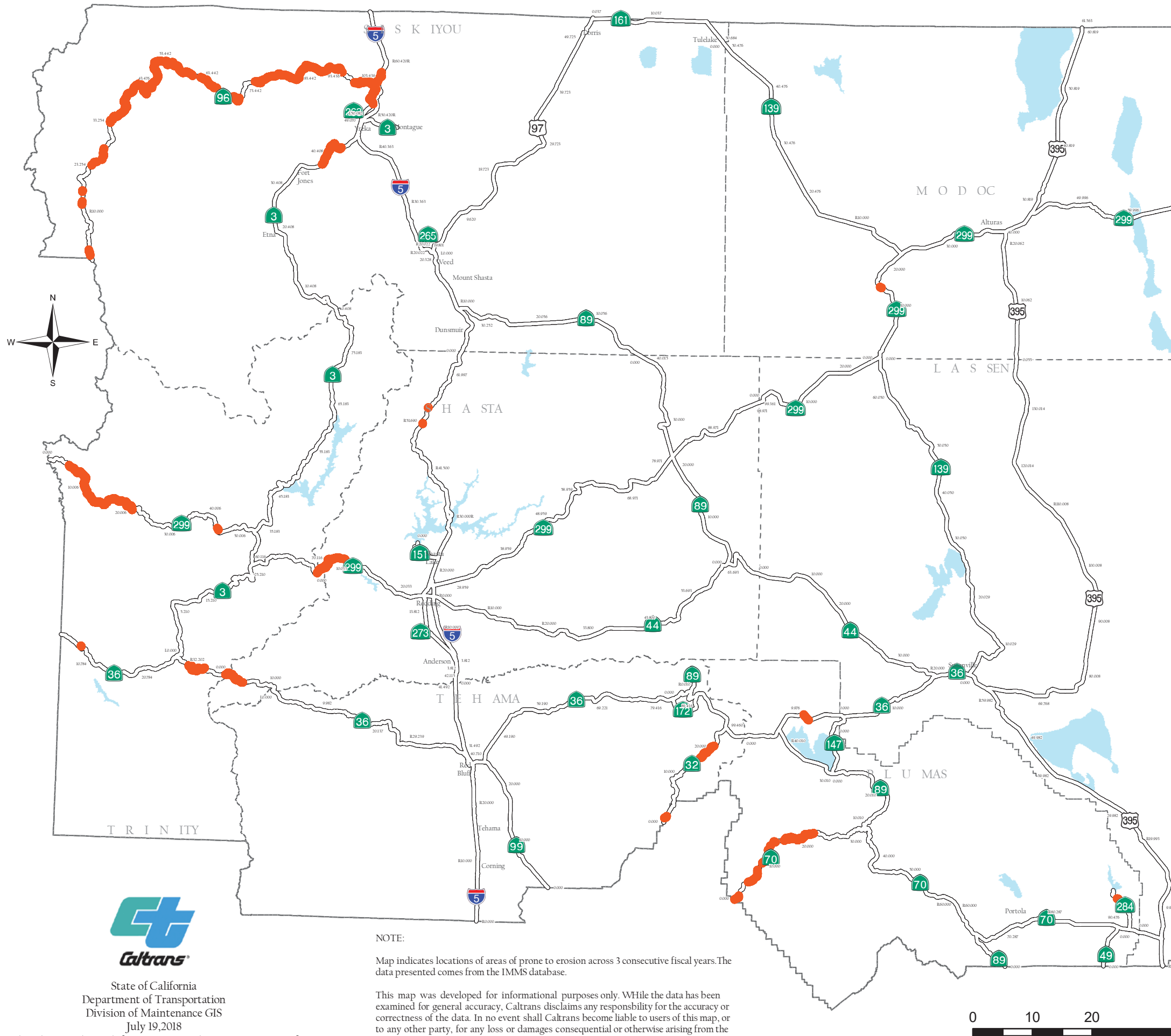
- Areas Prone to Erosion
- County Boundary
- Water Feature

Slopes Prone to Erosion			
County	Route	PM1	PM2
MOD	299	14	14.3
PLU	36	12	13
PLU	70	0	22.5
PLU	284	6	6.3
SHA	5	51.4	54.6
SHA	36	0	4.5
SHA	44	14.5	14.5
SHA	299	0	8
SHA	299	41.5	47.83
SIS	3	38	43.58
SIS	96	1	105.823
SIS	263	52.6	57.1
TEH	32	1	D2.706
TEH	32	17	20.5
TEH	36	15.255	15.255
TRI	36	4.5	4.6
TRI	36	32	37
TRI	299	4.4	43.3

Caltrans District Boundary



Figure 5-1



State of California  
Department of Transportation  
Division of Maintenance GIS  
July 19, 2018

H:\GIS\Erosion\MXD\SlopesProne\_2018\2018\_District02.mxd

This page was intentionally left blank.

## 6 Implementation

---

Section 6 of the DWP identifies the specific projects in which work is planned during the fiscal year within the Project Approval/Environmental Document (PA/ED), Plans, Specifications, and Estimates (PS&E), and Construction development phases. The anticipated schedule of construction and maintenance projects is subject to change. These projects are limited to those meeting any of the following criteria:

1. All projects that require soil disturbing activities
2. Adjacent to a Drinking Water or Ground Water Recharge Facility, as described in Section 4 of the DWP
3. A supplemental environmental project
4. Additional projects per agreement between the District and local RWQCB

Projects listed in Table 6-1 include (where applicable):

1. Location (county, route and post mile limits)
2. Project number (expense authorization)
3. Basic Project Description
4. Disturbed soil area
5. Presence of receiving waters within or adjacent to project limits, with special designation for 303(d) listed water bodies (adopted)
6. Drinking Water Reservoir or Ground Water Recharge Facility within or adjacent to project (as identified in Section 4 of the DWP)
7. Projected milestone dates of PA/ED, PS&E, begin Construction, and end Construction
8. Description of Construction Controls
9. Post-Construction Treatment Controls (types and quantities)
10. Dredge and fill (CWA-401) activities within the project
11. Other Regional Water Control Board Permits Required
12. Potential and Actual Impacts of Project's Discharge
13. Area of New Impervious Surface
14. Percentage of New Impervious Surface to Existing Impervious Surface

The updated lists of projects meeting these criteria will also be provided to the RWQCB annually on October 1st. Furthermore, this section identifies planned maintenance projects with soil disturbance. Information associated with the project includes location, affected water body, and area of disturbance. In addition, this section also describes the planned stormwater monitoring activities within the District; however, these activities may be conducted jointly with other Districts and HQ. Consequently, the information contained in a DWP may be repeated in another DWP.

This page was intentionally left blank.



Table 6-1: District 2 Anticipated Project Development and Construction Schedule

No.	EA	Project Location					Project Description <sup>1,2</sup>	Water Bodies Within or Adjacent to Project Limits <sup>3</sup>	Dredge and Fill Activities (Y/N/NA) <sup>4</sup>	Other Regional Water Board Permits Required <sup>5</sup>	Potential and Actual Impacts of Project's Discharge <sup>6</sup>	Disturbed Soil Area (acres)	Area of New Impervious Surface (acres)	Percentage of New Impervious Surface to Existing Impervious Surface	Description of Construction Controls (SWPPP/WPCP/TBD) <sup>7</sup>	Post-Construction Treatment Control Type, Quantity <sup>8</sup>	Anticipated Project Delivery Schedule		Construction Period	
		Co.	Route	Begin PM	End PM	RB <sup>9</sup>											PA&E Date	PS&E Date	Start Date	End Date
1	02-0H560	Butte	070	29.0	48.1	5	Drainage rehabilitation	NF Feather River	Y	-	-	> 1	0.0	0.0%	SWPPP	C	01-Sep-18	25-Sep-19	13-Feb-20	29-Dec-20
2	02-0H900	Butte	70	41.9	46.5	5	Fish passage retrofits	NF Feather River	Y	-	-	0	0.06	-	WPCP	E	06-Nov-18	20-Jul-18	18-Feb-19	15-Jan-21
3	02-4H430	Butte	70	42.1	42.1	5	Water Well	NF Feather River		-	-	0	0	0%	WPCP	E	-	-	04-Sep-18	-
4	02-4E46U	Lassen	036	6.0	14.6	5/6	Roadway rehab. and realignment and Bridge realignment	Goodrich Creek, Hamilton Branch, Willard Creek	Y	-	-	74	5.4		SWPPP	C	25-May-18	21-Jul-19	24-Jan-20	15-Apr-22
5	02-4F990	Lassen	036	22.4	29.4	6	Susanville CAPM	Susan River	N	-	-	0.0	0.0	0.0%	WPCP	E	28-Jun-16	23-Jun-17	09-Jul-18	16-Nov-19
6	02-1H690	Lassen	036	22.44	22.44	6	Susanville CVEF	Susan River	NA	-	-	0.0	0.0	0.0%	TBD	C	06-Mar-21	12-Mar-22	20-Jul-23	30-Nov-25
7	02-4F420	Lassen	036	26.6	27.2	5	Skyline Extension	Susan River	N	-	-	0.0	0.0	0.0%	TBD	C	18-Jan-18	15-Sep-18	15-Apr-19	01-Oct-19
8	02-3H820	Lassen	044	0.0	37.25	5/6	Pavement overlay with drainage replacement	Butte Creek, Lost Creek, Susan River	NA	-	-	1	0	0.0%	SWPPP	E	10-Jan-22	17-Oct-22	20-Jun-23	31-Dec-24
9	02-1H440	Lassen	044	31.9	32.6	6	Curve improvement	Big Springs, Susan River	N	-	-	0.0	0.0	0.0%	SWPPP	C	11-Sep-17	05-Sep-18	12-Feb-19	16-Nov-20
10	02-0H630	Lassen	139	6.2	7.3	6	Curve Improvement	Susan River	N	-	-	0.0	0.0	0.0%	TBD	C	16-Feb-17	08-Feb-18	04-Sep-18	16-Nov-20
11	02-2H400	Lassen	139	10	20	6	Replace AC Surfacing. Chip Seal	Susan River	N	-	-	0.0	0.0	0.0%	WPCP	E	15-Jul-16	-	07-Apr-17	31-Dec-18
12	02-1H110	Lassen	299	25.58	25.58	5	Rehabilitate Maintenance Sta.	TBD	N	-	-	0.0	0.0	0.0%	SWPPP	C	06-Oct-17	21-Dec-18	06-Aug-19	15-Jan-22
13	02-4E690	Lassen	395	49.6	49.6	6	Honey Lake SRRA Sewer Restoration	Honey Lake	N	-	-	-	-	-	WPCP	-	30-Jul-13	27-Apr-15	04-Feb-16	30-Sep-18
14	02-4G760	Lassen	395	61	61	6	Upgrade US 395/SR 36 Intersection	Honey Lake	N	-	-	0.0	0.0	0.0%	TBD	C	06-Apr-20	09-Aug-21	07-Jun-22	10-Jan-24
15	02-0H570	Modoc	139	2.5	30.5	1/5	Modoc 139 Drainage	TBD	N	-	-	0.0	0.0	0.0%	TBD	C	15-May-21	15-May-22	20-Sep-22	10-Mar-24
16	02-2H380	Modoc	139	6	10.7	5	Replace AC Surfacing	Pit River	N	-	-	0.0	0.0	0.0%	WPCP	E	17-Jun-16		10-Mar-17	31-Dec-18
17	02-4F77U	Modoc	139	23.3,24.5	26.6, 33.5	5	Bridge Replacement	Caldwell Creek, Pit River	Y	-	-	62	2.9	-	SWPPP	C	29-Jul-16	21-Nov-17	14-Jun-18	15-Oct-19
18	02-4F210	Modoc	299	0.51	1.0	5	Bridge replacement	Butte and Ash Creeks	Y	-	-	0.62	0.05	0.0%	SWPPP	E	03-Mar-17	9-Mar-18	15-Nov-18	15-Jul-21
19	02-1H330	Modoc	299	51.9	52.5	5/6	Curve Improvement	Cedar Pass Creek	Y	-	-				TBD	C	19-Sep-17	7-May-18	23-Oct-18	1-July-20
20	02-4H140	Plumas	36	6.6	6.6	5	Repair Sand/Salt House	Lake Almanor (303d)	N	-	-	0	0	0.0%	WPCP	E	31-May-18	21-Dec-18	02-Jul-19	31-Dec-21
21	02-4H380	Plumas	36	6.6	6.6	5	Add Treatment BMP	Lake Almanor(303d)	N	-	-	0.14	0	0.0%	WPCP	DPPI	15-Aug-18	-	05-Mar-19	30-Jan-20
22	02-3H250	Plumas	36	12.8	12.8	5	Reconstruct traction sand trap	Lake Almanor(303d)	N	-	-	0	0	0.0%	WPCP	TRCSND	10-Jul-17	-	25-May-18	31-Dec-18
23	02-4G770	Plumas	036	13.73	14.23	5	Improve Intersection	Lake Almanor(303d)	N	-	-	1.6	1.2	47.1%	SWPPP	C	-	-	-	-
24	02-1H540	Plumas	070	0	0	5	CREEK BRIDGE	TBD	NA	-	-	0.0	0.0	0.0%	TBD	C	06-Mar-19	12-Aug-24	23-Sep-24	30-Nov-28
25	02-4H440	Plumas	070	0	29.9	5	Stabilize RSP in stream channel	NF Feather River	Y	-	-	0	0	0.0%	WPCP	E	-	-	-	-
26	02-0H800	Plumas	070	23.68	31.82	5	Fish Passage Restoration	NF Feather River	Y	-	-	0.0	0.0	0.0%	WPCP	E	19-Nov-17	10-Sep-18	08-Feb-19	15-Jan-21
27	02-0H550	Plumas	070	0.4	30.8	5	Plumas 70 Drainage	NF Feather River	Y	-	-	0.0	0.0	0.0%	WPCP	E	01-Sep-18	25-Sep-19	13-Feb-20	29-Dec-20
28	02-0H380	Plumas	070	1	1.3	5	Install Tunnel Lighting	NF Feather River	N	-	-	0.0	0.0	0.0%	WPCP	E	10-Sep-15	01-Sep-16	15-Mar-17	11-Aug-17

<sup>1</sup> Supplemental Environmental Projects designated as “SEP.”

<sup>2</sup> Projects adjacent to Drinking Water Reservoirs or Ground Water Recharge Facilities are noted (DW) and (GW), respectively.

<sup>3</sup> Water bodies with designation for 303(d) designation are noted in parentheses.

<sup>4</sup> If yes, a 401 permit will be required for this project. NA = Not Available at this time.

<sup>5</sup> Regional Water Board Permits required other than Construction General Permit and Clean Water Act Section 401 water quality certification, such as Waiver of Discharge Requirements, Dewatering Permits, Bridge Painting WDRs, etc.

<sup>6</sup> This information may come from the Water Quality Assessment Report prepared for each project, a Water Quality Technical Memorandum, or other document that evaluates the water quality impacts of a project.

<sup>7</sup> A description of the Construction Controls is available in the project’s Storm Water Pollution Prevention Plan (SWPPP), Water Pollution Control Plan (WPCP), or is To Be Determined (TBD) if the Disturbed Soil Area is unavailable.

<sup>8</sup> Treatment Control Status identified by: device type/number of devices, exempt (“E”), or under consideration (“C”). See Treatment Control Status Legend below for device type abbreviations.

<sup>9</sup> Regional Board

**Table 6-1: District 2 Anticipated Project Development and Construction Schedule**

No.	EA	Project Location					Project Description <sup>1,2</sup>	Water Bodies Within or Adjacent to Project Limits <sup>3</sup>	Dredge and Fill Activities (Y/N/NA) <sup>4</sup>	Other Regional Water Board Permits Required <sup>5</sup>	Potential and Actual Impacts of Project's Discharge <sup>6</sup>	Disturbed Soil Area (acres)	Area of New Impervious Surface (acres)	Percentage of New Impervious Surface to Existing Impervious Surface	Description of Construction Controls (SWPPP/WPCP/TBD) <sup>7</sup>	Post-Construction Treatment Control Type, Quantity <sup>8</sup>	Anticipated Project Delivery Schedule		Construction Period	
		Co.	Route	Begin PM	End PM	RB <sup>9</sup>											PA&ED Date	PS&E Date	Start Date	End Date
29	02-0H450	Plumas	070	11.5	11.9	5	Opapee Curve Improvement	North Fork Feather River	N	-	-	2.2	0.4	0.0%	SWPPP	E	14-Dec-16	25-Apr-18	12-Nov-18	09-Nov-20
30	02-1C750	Plumas	070	14.9	14.9	5	bridge replacement - seismic #3208	Feather River	N	-	-	0.8	0.1	0.0%	SWPPP	E	26-Jan-15	22-Sep-16	14-Jul-17	15-Apr-20
31	02-4H610	Plumas	070	31.4	31.6	5	PLU 70 Sinkhole	Indian Creek	NA	-	-	0	0	0.0%	WPCP	E	-	-	07-May-18	29-Aug-18
32	02-4G390	Plumas	070	33.07	33.07	5	Indian Creek Bridge Rail Replacement	Indian Creek	N	-	-	0.0	0.0	0.0%	TBD	E	01-Sep-18	15-Sep-19	15-Feb-21	01-Nov-22
33	02-1H790	Plumas	070	VAR	VAR	5	Rockfall Fence	TBD	NA	-	-	0.0	0.0	0.0%	TBD	C	06-Nov-19	24-Dec-20	15-Jun-21	20-Jul-22
34	02-2C090	Plumas	070	50.6	51.7	5	Replace bridge deck	Feather River	N	-	-	2.9	0.2	12.6%	SWPPP	E	29-Jun-15	20-May-16	22-Dec-16	02-Jan-20
35	02-1H580	Plumas	070	58.4	78.4	5	Roadway rehab and shoulders	MF Feather River	NA	-	-	24	0.0	014.8%	SWPPP	C	05-Nov-20	14-Feb-22	27-Sep-22	02-Dec-25
36	02-3H740	Plumas	070	68.8	66.2	5	Road intersection	MF Feather River	NA	-	-	0	0	0.0%	WPCP	E	05-Nov-20	14-Feb-22	27-Sep-22	02-Dec-25
37	02-4H030	Plumas	89	12.9	21.0	5	Bridge	TBD	N	-	-	0	0		TBD		-	-	-	-
38	02-3H950	Plumas	89	0.0	8.71	5		TBD	N	-	-	0	0		TBD		-	-	-	-
39	02-4G700	Plumas	089	14.6	15	5	Construct Left Turn Lanes	Indian Creek	N	-	-	1.0	1.1	0.0%	WPCP	E	-	-	-	-
40	02-4G710	Plumas	089	14.8	14.8	5	Arlington Park and Ride	Indian Creek	N	-	-	0.7	0.5	0.0%	TBD	C	-	-	-	-
41	02-4E330	Plumas	089	15.76		5	Riparian Mitigation	Indian Creek	N	-	-	0.0	0.0	0.0%	WPCP	C	12-Dec-11	-	28-Jun-12	15-Oct-18
42	02-0E180	Plumas	089	29.8	30.2	5	Spillway Bridge Replacement	North Fork Feather River	N	-	-		0.0	0.0%	TBD	E	18-Feb-15	15-Dec-16	-	17-Jan-20
43	02-3H690	Plumas	089	30	42.1	5	FDR with drainage	NF Feather River	N	-	-	0	0	-	WPCP	E	15-Feb-22	13-Mar-24	11-Sep-24	31-Dec-26
44	02-4H230	Plumas	089	30.2	35.3	5	Humboldt Road	NF Feather River	NA	-	-	0	0	-	TBD		13-Jul-18		15-Mar-1-	31-Dec-20
45	02-4E640	Plumas	147	8.91	9.3	5	Hamilton Branch Bridge Replacement	Lake Almanor	Y	-	-	1.9	0.7	50.0%	SWPPP	E	01-Jul-14	28-Oct-15	-	31-Jun-19
46	02-4G41U	Shasta-Siskiyou	005	56.6	58.1	5	Replace Overcrossings Sims Crag Combined	Sacramento River	N	-	-	4.17	0.46		SWPPP	E	01-Feb-18	12/6/18	27-Aug-19	13-Dec-21
47	02-4G570	Shasta	005	1.0	R26.3	5	I-5 Worker's Safety	Sacramento River	N	-	-	0.46	0.0	0.0%	WPCP	C	14-Jun-17	05-Jan-18	13-Aug-18	31-Dec-20
48	02-4F510	Shasta	005	0	67.02	5	Shasta 5 CRZ	Sacramento River	Y	-	-	5.6	0.0	0.0%	SWPPP	C	28-Oct-16	08-Dec-17	21-Nov-18	01-Oct-20
49	02-4C40V	Shasta	005	3.8	11.7	5	Anderson/Redding 6-Lane New Lane	Sacramento River	N	-	-	85	44	34.4%	SWPPP	BS,5	29-Mar-13	06-Apr-18	15-Oct-18	07-Oct-22
50	02-0H920	Shasta	005	14.8	20	5	Increase Freeway to 6 Lanes	Sacramento River	NA	-	-	24.0	14.0	24.1%	SWPPP	C	17-Sep-21	-	-	-
51	02-4G830	Shasta	005	27.5	29.5	5	Pit River Bridge Overhead	Shasta Lake	N	-	-	0.0	0.0	0.0%	TBD	C	16-Jul-21	26-Dec-23	05-Feb-24	17-Apr-28
52	02-4G520	Shasta	005	28	29	5	Bridge Maintenance	Shasta Lake	N	-	-	0.0	0.0	0.0%	WPCP	E	15-Sep-16	27-Jul-17	23-Feb-18	25-Apr-20
53	02-3H680	Shasta	005	28.8	44.2	5	Rehab	Shasta Lake	NA	-	-	20	0.9		SWPPP	E	06-Oct-21	10-Nov-22	08-Jun-23	26-Dec-23
54	02 4G580	Shasta	005	31	31.7	5	O'Brien SRRA Water & Wastewater Rehab	Shasta Lake	N	WDRs	-	0.0	0.0	0.0%	WPCP	C	06-Mar-18	01-Feb-19	01 Mar 20	01 Oct 21
55	02-1H390	Shasta	005	32.16	32.1601	5	Deck & Rail Rehab	Shasta Lake	NA	-	-	0.0	0.0	0.0%	TBD	C	05-Nov-18	14-Aug-20	03-Mar-21	15-Jul-22
56	02-37890	Shasta	005	39	41.2	5	Antlers Bridge Replacement	Shasta Lake	Y	-	-	51.0	1.5	0.0%	SWPPP	E TST 6	31-Jan-07	01-Aug-08	14-Oct-09	15-Jul-18
57	02-3H610	Shasta	005	59.5	62.5	5	Shasta 5 CRZ CU	Sacramento River	NA	-	-	0.0	0.0		TBD		15-Oct-18	17-Jun-19	24-Dec-19	31-Dec-21
58	02 4G410	Shasta	005	66.8	66.8	5	Castella Bridge Rehab	TBD	N	-	-	0.0	0.0	0.0%	TBD	C	01 Feb 18	17 Sep 19	23 Apr 20	15 Nov 21
59	02-2H620	Shasta	36	3.57	3.57	5	Platina MS	Cottonwood Creek	N	-	-				TBD		06-Nov-18	27-Dec-19	13-May-20	31-Dec-21
60	02-4H410	Shasta	36	8.7	8.7	5		TBD	NA	-	-	0.0	0.0		TBD		17-Aug-18	-	02-Mar-19	30-Jan-20
61	02-36841	Shasta	044	4.6	6.4	5	Stillwater Interchange	Clough Creek	Y	-	-	5.8	0.3	0.0%	SWPPP	E	02-Nov-15	9/30/16	20-Nov-17	02-Dec-19
62	02-2H990	Shasta	044	51.6	52.2	5	Superelevation/Profile Correction w/ shoulders	TBD	NA	-	-	4.3	0.72		SWPPP	E	15-Feb-19	03-Feb-20	07-Jul-20	01-Apr-22
63	02-4F200	Shasta	044	59.4	59.8	5	Hat Creek Bridge Replacement	Hat Creek	N	-	-	2.7	0.4	0.0%	SWPPP	E	29-Jul-16	27-Dec-17	16-Nov-18	15-Jan-21
64	02-2H470	Shasta	089	0	21.3	5	Chip Seal	ND	NA	-	-	0.0	0.0	0.0%	WPCP	E	22-Jul-16	-	14-Apr-17	31-Dec-18

**Table 6-1: District 2 Anticipated Project Development and Construction Schedule**

No.	EA	Project Location					Project Description <sup>1,2</sup>	Water Bodies Within or Adjacent to Project Limits <sup>3</sup>	Dredge and Fill Activities (Y/N/NA) <sup>4</sup>	Other Regional Water Board Permits Required <sup>5</sup>	Potential and Actual Impacts of Project's Discharge <sup>6</sup>	Disturbed Soil Area (acres)	Area of New Impervious Surface (acres)	Percentage of New Impervious Surface to Existing Impervious Surface	Description of Construction Controls (SWPPP/WPCP/TBD) <sup>7</sup>	Post-Construction Treatment Control Type, Quantity <sup>8</sup>	Anticipated Project Delivery Schedule		Construction Period	
		Co.	Route	Begin PM	End PM	RB <sup>9</sup>											PA&ED Date	PS&E Date	Start Date	End Date
65	02-4F79U	Shasta	151	5.5	5.83	5	Shasta Lake Combined Sidewalk, crosswalks, curbs, preserve pavement	Sacramento River	N	-	-	0.0	0.0	0.0%	WPCP	E	11-Dec-15	18-Apr-17	05-Mar-18	02-Dec-19
66	02-4G420	Shasta	273	3.8	12.9	5	Route 273 Gaps	Sacramento River	N	-	-	0.0	0.0	0.0%	WPCP	E	12-Dec-16	12-Jan-18	06-Aug-18	31-Jan-20
67	02-3E740	Shasta	299	7.6	18.3	5	Rehab pavement	Rock Creek, Clear Creek	N	-	-	0.0	0.0	0.0%	SWPPP	C	26-Sep-17	06-Mar-18	01-Sep-18	31-Dec-19
68	02-3E410	Shasta	299	0.3	7.1	5	HIGHWAY REALIGNMENT	WILLOW CREEK	Y	-	-	71.1	42.8	149.7%	SWPPP	TST,5	28-Jun-13	10-Mar-14	12-Jan-15	09-Jan-18
69	02-1H720	Shasta	273	14.9	15.7	5	South Market ADA	Sacramento River	NA	-	-	0.0	0.0	0.0%	TBD	C	30-Sep-16	16-Apr-21	04-Feb-22	17-Nov-23
70	02-1H650	Shasta	299	16.4	17.4	5	ROAD	Whiskeytown Lake	NA	-	-	0.0	0.0	0.0%	TBD	C	06-Mar-19	12-Aug-24	23-Sep-24	30-Nov-28
71	02-2H310	Shasta	299	49.43	49.49	5	Mitigation Parcel	Cedar Creek	N	-	-	0.0	0.0	0.0%	TBD	C	15-Jul-16	-	-	15-Aug-18
72	02-1H610	Shasta	299	60.6	60.6001	5	...	Hatchet Creek	NA	-	-	0.0	0.0	0.0%	TBD	C	14-Mar-19	20-Aug-24	01-Oct-24	08-Dec-28
73	02-4G430	Shasta	299	60	67.9	5	Montgomery Creek Pavement	Hatchet Creek	N	-	-	0.0	0.0	0.0%	TBD	C	15-Jan-20	02-Dec-20	17-Jul-21	16-Nov-20
74	02-1H570	Shasta	299	67.8	77.8	5	Burney CapM	Hatchet Creek	NA	-	-	0.0	0.0	0.0%	TBD	E	08-Sept-20	26-Jan-22	30-Aug-22	15-Jul-24
75	02-4E020	Shasta	299	77.8	79.7	5	Roadway Rehab with Shoulder Widening	Burney Creek	N	-	-	5.8	1.8	17.8%	SWPPP	C	02-Oct-15	03-Apr-17	20-Dec-17	18-Jan-20
76	02-4G440	Siskiyou	003	38	38.6	1	Lower Moffett Creek Scour	Moffett Creek, Scott River	N	-	-	0.7	0.0	0.0%	TBD	E	06-Sep-19	10-Jul-20	26-Feb-21	12-Jan-24
77	02-4F520	Siskiyou	005	0	70.63	1/5	Siskiyou 5 CRZ	Sacramento River, Shasta River(303d)	N	-	-	0.0	0.0	0.0%	SWPPP	C	08-Jul-20	15-Dec-20	13-Aug-21	31-Oct-22
78	02-1H480	Siskiyou	005	2.5	3.0	5	Replace Bridge Deck	Upper Sacramento River	NA	-	-	0.0	0.0	0.0%	TBD	C	15-Apr-20	27-Dec-21	25-Jul-22	31-Dec-25
79	02-4G550	Siskiyou	005	2.7	11.4	5	Pavement Rehab with Shoulder Widening	Upper Sacramento River	N	-	-	0.0	0.0	0.0%	SWPPP	C	18-Mar-16	12-Jan-17	20-Sep-17	15-Jan-20
80	02-2E800	Siskiyou	005	7.2	7.2	5	Improve truck inspection facility	Castle Creek, Sacramento River	N	-	-	0.7	0.0	0.0%	WPCP	E	09-Sep-13	07-Jan-15	25-Feb-16	01-Feb-19
81	02-1H400	Siskiyou	005	8.29	8.29	5	Deck & Rail Rehab	TBD	NA	-	-	0.0	0.0	0.0%	TBD	C	14-Mar-19	20-Aug-24	01-Oct-24	08-Dec-28
82	02-4F540	Siskiyou	005	15.3	16.5	5	Bridge Replacement	Siskiyou Lake	N	-	-	0.0	0.0	0.0%	SWPPP	C	04-Dec-15	30-Jan-18	15-Aug-18	14-Jan-22
83	02-4G240	Siskiyou	005	25.22	25.22	5	North Edgewood Overhead Upgrade	Shasta River(303d)	N	-	-	7.8	0.0	0.3%	SWPPP	C	17-Aug-15	09-Jan-17	18-Aug-17	27-Feb-19
84	02-2H130	Siskiyou	005	25.4	25.9	1	Potable & Waster Water Rehab Weed Rest Areas	Shasta River	N	WDR	-	0.0	0.0	0.0%	WPCP	C	16-Oct-19	17-Jun-20	14-Apr-21	12-Jan-22
85	02-4F58U	Siskiyou	005	57.8	58.5	1	RIVER ROAD UNDERCROSSING	Klamath River	N	-	-		0.0	0.0%	SWPPP	E	02-Oct-15	05-May-16	18-Nov-16	15-Oct-18
86	02-4G300	Siskiyou	005	58	58	1	Collier SRRA Break Room	Klamath River	N	-	-	0.0	0.0	0.0%	WPCP	E	10-Jun-16	29-Sep-17	4-Jun-18	31-May-19
87	02-4E670	Siskiyou	005	58	58	1	Collier SRRA Potable/Waste Water	Klamath River	N	WDR	-	1.6	0.0	0.0%	SWPPP	E	03-Jun-16	15-Apr-16	29-Jun-17	17-Jan-20
88	02-4G780	Siskiyou	089	34.2	34.4	5	Intersection Improvements	Big Canyon Creek, Sacramento River	N	-	-	0.0	0.0	0.0%	TBD	C	10-Jan-20	05-Feb-21	27-Aug-21	20-Jan-23
89	02-1H780	Siskiyou	096	7.5	10	1	Fish Passage	Stanshaw Creek, Sandy Bar Creek, Klamath River	Y	-	-	0.0	0.0	0.0%	TBD	C	01-Oct-21	01-Nov-23	27-Aug-24	31-Dec-27
90	02-1H090	Siskiyou	096	26	99.7	1	Drainage Rehab	Klamath River	Y	-	-	0.0	0.0	0.0%	SWPPP	C	29-Mar-19	04-Oct-19	1-Sep-20	15-Nov-22
91	02-1H590	Siskiyou	096	41	58	1	Fish passage, replace culverts with bridges	Klamath River, Portuguese Creek, Cade Creek	Y	-	-	0.0	0.0	0.0%	TBD	C	07-Sep-21	09-Oct-23	02-Jul-24	31-Dec-27
92	02-4F900	Siskiyou	096	41.3	41.8	1	Happy Camp ADA/Complete Streets	Klamath River	N	-	-	0.0	0.0	0.0%	WPCP	C	18-Jun-19	14-Nov-23	29-Apr-24	10-Jul-28
93	02-2H540	Siskiyou	096	30	88	1	Reconstruct MBGR	Klamath River	N	-	-	0.0	0.0	0.0%	WPCP	C	26-Aug-16	-	05-May-17	31-Dec-18
94	02-4C150	Siskiyou	096	23.4	54.5	1	Rehab 28 Culverts	TBD	N	-	-	0.0	0.0	0.0%	TBD	E	04-May-17	19-Apr-18	01-Nov-18	15-Jan-21
95	02-4E650	Siskiyou	096	52.5	88.3	1	Bridge Rail Upgrade	Klamath River	Y	-	-	5.5	0.2	19.1%	SWPPP	BS,1	30-Jun-15	03-Jun-16	04-Jan-17	18-Jan-19
96	02-4F550	Siskiyou	089	20.9	21.2	5	Replace Bridge	Mud Creek	Y	-	-	3.6	0.0	0.0%	SWPPP	C	15-Apr-16	05-May-17	01-Dec-17	17-Jan-20

**Table 6-1: District 2 Anticipated Project Development and Construction Schedule**

No.	EA	Project Location					Project Description <sup>1,2</sup>	Water Bodies Within or Adjacent to Project Limits <sup>3</sup>	Dredge and Fill Activities (Y/N/NA) <sup>4</sup>	Other Regional Water Board Permits Required <sup>5</sup>	Potential and Actual Impacts of Project's Discharge <sup>6</sup>	Disturbed Soil Area (acres)	Area of New Impervious Surface (acres)	Percentage of New Impervious Surface to Existing Impervious Surface	Description of Construction Controls (SWPPP/WPCP/TBD) <sup>7</sup>	Post-Construction Treatment Control Type, Quantity <sup>8</sup>	Anticipated Project Delivery Schedule		Construction Period	
		Co.	Route	Begin PM	End PM	RB <sup>9</sup>											PA&ED Date	PS&E Date	Start Date	End Date
97	02-4E680	Siskiyou	097	21.8	21.8	1	Grass Lake Safety Roadside Rest Area Relocation	Grass Lake	N	WDR	-	0.0	0.0	0.0%	TBD	C	26-May-16	01-Mar-17	25-Apr-18	30-Jul-19
98	02-1H360	Siskiyou	096	77.15	77.15	1	Bridge	TBD	NA	-	-	0.0	0.0	0.0%	TBD	C	03-Aug-19	15-Jun-21	12-Mar-22	15-Oct-24
99	02-2H180	Siskiyou	161	17.3	19.36	1	Hill Road Rehab	TBD	NA	-	-	0.0	0.0	0.0%	TBD	C	30-Jan-18	10-Aug-18	06-May-19	03-Feb-20
100	02-2E480	Siskiyou	VAR	0	0		Bridge Replacement	TBD	N	-	-	0.0	3.0	0.0%	SWPPP	C	21-Nov-16	24-Apr-18	12-Nov-18	15-Nov-21
101	02-1H340	Tehama	005			5	BRIDGE	TBD	N	-	-	0.0	0.0	0.0%	TBD	C	01-Sep-17	-	-	01-Nov-18
102	02-1H630	Tehama	005			5	SB Safety Rest Area Rehab	TBD	NA	-	-	0.0	0.0	0.0%	TBD	C	26-Nov-18	06-May-24	17-Jun-24	28-Aug-28
103	02-4F590	Tehama	005	25.4	25.4	5	Sacramento River Bridge Seismic	TBD	N	-	-	0.0	0.0	0.0%	TBD	E	21-May-18	09-Nov-19	24-Jun-20	30-Jul-23
104	02-1H620	Tehama	005	33.3	33.3001	5	Safety Rest Area	TBD	NA	-	-	0.0	0.0	0.0%	TBD	C	06-Mar-19	12-Aug-24	23-Sep-24	30-Nov-28
105	02-1H680	Tehama	005	39.0	41.9	5	Cottonwood Truck Scales	TBD	NA	-	-	0.0	0.0	0.0%	TBD	C	05-May-20	16-Aug-21	17-May-22	31-Dec-24
106	02-0H200	Tehama	032	8.6	9.3	5	HAUL ROAD	TBD	N	-	-	0.0	0.0	0.0%	TBD	C	02-May-16	07-Jul-17	07-Sep-17	14-Aug-18
107	02-4G560	Tehama	036	1.1	37	5	Red Bluff Drainage	TBD	N	-	-	0.0	0.0	0.0%	TBD	C	21-Nov-16	24-Apr-18	11-Dec-18	15-Nov-21
108	02-4G280	Tehama	036	8.96	14.22	5	A-13	TBD	N	-	-	0.0	0.0	0.0%	TBD	C	01-Sep-17	-	-	01-Oct-18
109	02-1H970	Tehama	036	12.6	13.1	5	Ward Curves	TBD	NA	-	-	0.0	0.0	0.0%	TBD	C	11-May-18	19-Jul -19	04-Jan-20	24-Nov-21
110	02-0H110	Tehama	036	36.4	36.8	5	Realign Curve	TBD	N	-	-	0.0	0.0	0.0%	TBD	C	31-Oct-16	05-Jan-18	30-Jul-18	31-Dec-19
111	02-4G540	Tehama	036	40.32	42.04	5	Red Bluff CAPM	TBD	N	-	-	0.0	0.0	0.0%	TBD	E	25-Dec-17	18-Jun-19	19-Feb-20	31-Dec-21
112	02-3E720	Tehama	036	42.1	46	5	East Red Bluff CapM	ND	N	-	-	0.4	0.4	0.0%	WPCP	E	07-Dec-15	01-May-17	04-Jan-18	31-Dec-19
113	02-4G03U	Tehama	036	75.1	78.4	5	Lassen Curve Realignment	South Fork Battle Creek	N	-	-	37.3	13.1	123.9%	SWPPP	C	16-Aug-15	09-Jun-18	21-Dec-16	01-Nov-19
114	02-0H390	Tehama	036	87	87.8	5	CCTV/RWIS	TBD	N	-	-	0.0	0.0	0.0%	TBD	C	07-Nov-17	01-Nov-18	25-Jun-19	25-Aug-20
115	02-2H140	Tehama	036	87.8	89	5	Curve & Climbing Lane	TBD	NA	-	-	0.0	0.0	0.0%	TBD	C	02-Apr-18	28-May-19	03-Dec-19	15-Nov-21
116	02-1H74U	Tehama	036	87.8	88.8	5	Curve Improvement	TBD	NA	-	-	0.0	0.0	0.0%	TBD	C	09-Mar-18	30-Apr-19	01-Apr-20	05-Jan-22
117	02-2H390	Tehama	036	91.5	104	5	Replace AC Surfacing	ND	NA	-	-	0.0	0.0	0.0%	WPCP	E	01-Jul-16	-	17-Mar-17	31-Dec-18
118	02-1H320	Tehama	099	12	12.6	5	ADA & Pedestrian Improvements	(SACRAMENTO RIVER (RED BLUFF TO KNIGHTS LANDING))	N	-	-	1.0	1.0	15.4%	WPCP	E	01-Nov-17	19-Feb-19	03-Aug-19	31-Dec-20
119	02-0H540	Trinity	003	30.4	57.9	1	Trinity 3 Drainage	Trinity River	N	-	-	0.0	0.0	0.0%	TBD	C	23-Jul-18	05-Sep-23	13-Feb-20	29-Dec-20
120	02-4G250	Trinity	003	32.8	39.8	1	Trinity Drainage Improvements	Rush Creek	Y	-	-	0.0	0.0	0.0%	TBD	C	15-Jul-16	6/6/17	11/30/17	30-Jul-19
121	02-2H510	Trinity	003	33	65	1	ROAD TO 0.5 MILE SOUTH OF FRENCH GULCH ROAD	TBD	NA	-	-	0.0	0.0	0.0%	TBD	C	03-Jan-17	29-Oct-24	10-Sep-18	27-Dec-18
122	02-4F220	Trinity	003	58.7	61.9	1	Swift Creek Bridge Replacement	TBD	Y	-	-	3.9	0.3	281.8%	SWPPP	E	17-Jan-19	09-Apr-20	01-Dec-20	29-Dec-22
123	02-2H480	Trinity	036	3.5	9.2	1	MOUNTAIN ROAD	TBD	NA	-	-	0.0	0.0	0.0%	TBD	C	29-Jul-16	-	27-Apr-17	31-Dec-18
124	02-4F860	Trinity	036	26.7	27.1	1	Ditch Gulch Curve Improvement	TBD	Y	-	-	0.0	0.0	0.0%	TBD	C	31-Oct-16	26-Feb-18	01-Apr-19	07-Jan-22
125	02-2H050	Trinity	036	34.7	35.3	1	BRIDGE	TBD	NA	-	-	0.0	0.0	0.0%	TBD	C	01-Feb-19	08-Jan-20	01-Apr-21	14-Jan-22
126	02-4G380	Trinity	299	0	8.3	1	Humgray CAPM	Lower Trinity, Burnt Ranch	N	-	-	0.9	0.0	0.0%	WPCP	E	30-Nov-15	13-May-16	21-Dec-16	30-Dec-18
127	02-4G500	Trinity	299	1.9	2.1	1	South Fork Mine CRZ	TBD	N	-	-	0.0	0.0	0.0%	TBD	C	01-Mar-18	15-Mar-19	01-Apr-20	03-Jan-23
128	02-4G620	Trinity	299	3.56	3.56	1	Francis B. Matthews SRRA Septic and Well Rehab	TBD	N	WDR	-	0.0	0.0	0.0%	WPCP	E	22-Feb-19	18-Dec-19	07-Jul-20	06-Dec-21
129	02-0H320	Trinity	299	4.7	5	1	Operational Improvements	TBD	N	-	-	0.0	0.0	0.0%	TBD	C	15-Aug-18	10-Oct-19	14-May-20	29-Dec-22
130	02-0H410	Trinity	299	10.9	11.2	1	Place Rock Drapery	TBD	N	-	-	0.0	0.0	0.0%	TBD	E	24-Jul-18	13-Sep-19	13-Feb-20	29-Dec-20
131	02-1H460	Trinity	299	20	25	1	LITTLE FRENCH CREEK	TBD	NA	-	-	0.0	0.0	0.0%	TBD	C	06-Mar-19	12-Aug-24	23-Sep-24	30-Nov-28

Table 6-1: District 2 Anticipated Project Development and Construction Schedule

No.	EA	Project Location					Project Description <sup>1,2</sup>	Water Bodies Within or Adjacent to Project Limits <sup>3</sup>	Dredge and Fill Activities (Y/N/NA) <sup>4</sup>	Other Regional Water Board Permits Required <sup>5</sup>	Potential and Actual Impacts of Project's Discharge <sup>6</sup>	Disturbed Soil Area (acres)	Area of New Impervious Surface (acres)	Percentage of New Impervious Surface to Existing Impervious Surface	Description of Construction Controls (SWPPP/WPCP/TBD) <sup>7</sup>	Post-Construction Treatment Control Type, Quantity <sup>8</sup>	Anticipated Project Delivery Schedule		Construction Period	
		Co.	Route	Begin PM	End PM	RB <sup>9</sup>											PA&E Date	PS&E Date	Start Date	End Date
132	02-0H330	Trinity	299	20.2	20.7	1	Pave Shoulders	Trinity River	N	-	-	0.0	0.4	0.0%	TBD	E	28-Nov-16	22-Dec-16	18-May-17	15-Sep-18
133	02-0H680	Trinity	299	23.1	23.3	1	Place Rock Drapery	TBD	N	-	-	0.0	0.0	0.0%	TBD	E	24-Jul-18	13-Sep-19	13-Feb-20	29-Dec-20
134	02-0H690	Trinity	299	42.9	43.3	1	Install Rock Drapery	TBD	N	-	-	0.0	0.0	0.0%	TBD	E	15-Aug-18	13-Sep-19	13-Feb-20	29-Dec-20
135	02-1H700	Trinity	299	57.4	72.246	1	Stormwater Mitigation to obtain Compliance Units	TBD	NA	-	-	0.0	0.0	0.0%	TBD	C	08-Sep-20	28-Feb-22	30-Aug-22	02-Jan-24
136	02-0H030	D02-Various	070			5	Feather River Drainage	TBD	N	-	-	0.0	0.0	0.0%	TBD	C	24-Mar-16	10-Oct-17	11-Apr-18	11-Jul-19
137	02-2H320	D02-Various	VAR	0	0	1	Chip Seal	(KLAMATH RIVER HU, SCOTT RIVER HA)/(TRINITY LAKE)	N	-	-	-	0.0	0.0%	WPCP	E	14-Apr-16	-	20-Jan-17	31-Dec-18
138	02-2H330	D02-Various	395	0	3	6	Chip Seal	ND	N	-	-	-	0.0	0.0%	WPCP	E	02-May-16	-	27-Jan-17	31-Dec-18
139	02-4E450	D02-Various	299			5	Bieber to Adin Pavement Rehab	TBD	N	-	-	40.0	15.8	63.2%	TBD	C	17-Jan-19	16-Jan-20	25-Aug-20	01-Dec-22
140	02-4F600	D02-Various	VAR	5	52	1	Deck Replacements and misc. bridge rehab	TBD	N	-	-	0.0	0.0	0.0%	TBD	E	05-Oct-18	25-Jul-19	14-Feb-20	11-Oct-22
141	02-4F780	D02-Various	VAR	0.0	0.0	TBD	Pave Chain Control Areas Various Locations	Var	N	-	-	0.0	0.0	0.0%	TBD	TST,1	05-Sep-16	04-Oct-17	04-Sep-18	16-Nov-20
142	02-4G510	D02-Various	VAR	-	-	-	Motley Retrofits	TBD	N	-	-	0.0	0.0	0.0%	TBD	E	23-Oct-22	19-Nov-23	17-Jun-24	15-Nov-25
143	02-4G610	D02-Various	VAR	-	-	1	Trinity Workers Safety	TBD	N	-	-	0.0	0.0	0.0%	TBD	E	07-Nov-17	04-Feb-19	13-Aug-19	31-Dec-20
144	02-4G530	D02-Various	VAR	0	0	1	District Wide Scour Counter-Measures	TBD	N	-	-	0.0	0.0	0.0%	401	E	18-Feb-19	13-Feb-20	26-Aug-20	30-Dec-22
145	02-4G630	D02-Various	VAR	-	-	-	North Canyon TMS Improvement Project	TBD	N	-	-	0.0	0.0	0.0%	TBD	E	05-Dec-17	28-Jan-19	24-Sep-19	03-Jan-22
146	02-0H760	Plumas/Lassen	070	90.3/0.0	95.96/3.88	5	Chilcoot Rehab	TBD	N	-	-	0.0	0.0	0.0%	TBD	C	16-Jan-18	21-Feb-19	27-Aug-19	03-Jan-22

Treatment Control Status Legend	
<b>BMP Device Types:</b>	
BIOSTP	Biofiltration Strips
BIOSWL	Biofiltration Swales
C	Under Consideration
CNTBOX	Gross Solids Removal Devices (Inclined Screen)
DETBAS	Detention Basins
DPPIA	Design Pollution Prevention Infiltration Area*
DWFD	Dry Weather Flow Diversion
E	Exempt
INDBAS	Infiltration Basins*
INDTRE	Infiltration Trench*
LNGTBE	Gross Solids Removal Devices (Linear Radial)
MCTT	Multi-Chambered Treatment Trains
MF-ADS	Austin Sand Filters
MF-DSF	Delaware Sand Filters
Other	Other (specify type)
SA	Stabilization Areas
TRCSND	Traction Sand Traps
WETBAS	Wet Basins

\* Water quality volume infiltrates within the right of way. (When this is demonstrated for at least 90% of the WQV, other types of treatment BMPs are not considered unless there is a location-specific requirement.)

Table 6-2 lists the planned maintenance projects that will disturb soil.

Table 6-2: District 2 Anticipated Significant Road Maintenance Activities

No.	Co.	Route	Beg PM	End PM	Regional Board	Description	Water Bodies Affected <sup>10</sup>	Other Regional Water Board Permits Required <sup>11</sup>	Potential and Actual Impacts of Project's Discharge <sup>12</sup>	Disturbed Soil Area (acres)	Area of New Impervious Surface (acres)	Percentage of New Impervious Surface to Existing Impervious Surface	Description of Construction Controls (SWPPP/WPCP/TBD/NA) <sup>13</sup>	Post-Construction Treatment Control Type, Quantity <sup>14</sup>	Start Date	Completion Date
There are no significant road maintenance activities anticipated in District 2 other than routine maintenance.																

Treatment Control Status Legend	
BMP Device Types:	
BIOSTP	Biofiltration Strips
BIOSWL	Biofiltration Swales
C	Under Consideration
CNTBOX	Gross Solids Removal Devices (Inclined Screen)
DETBAS	Detention Basins
DPPIA	Design Pollution Prevention Infiltration Area*
DWFD	Dry Weather Flow Diversion
E	Exempt
INDBAS	Infiltration Basins*
INDTRE	Infiltration Trench*
LNGTBE	Gross Solids Removal Devices (Linear Radial)
MCTT	Multi-Chambered Treatment Trains
MF-ADS	Austin Sand Filters
MF-DSF	Delaware Sand Filters
Other	Other (specify type)
SA	Stabilization Areas
TRCSND	Traction Sand Traps
WETBAS	Wet Basins

\* Water quality volume infiltrates within the right of way. (When this is demonstrated for at least 90% of the WQV, other types of treatment BMPs are not considered unless there is a location-specific requirement.)

<sup>10</sup> Receiving waters within or adjacent to maintenance activity designated as “303(d) (constituent type).” Activity adjacent to Drinking Water Reservoir or Ground Water Recharge Facilities designated as “DW.”

<sup>11</sup> Regional Water Board Permits required other than Construction General Permit, such as Clean Water Act Section 401 water quality certification, Waiver of Discharge Requirements, Dewatering Permits, Bridge Painting WDRs, etc.

<sup>12</sup> This information may come from the Water Quality Assessment Report prepared for each project, a Water Quality Technical Memorandum, or other document that evaluates the water quality impacts of a project.

<sup>13</sup> A description of the Construction Controls is available in the project’s Storm Water Pollution Prevention Plan (SWPPP), Water Pollution Control Plan (WPCP), is To Be Determined (TBD) if the Disturbed Soil Area is unavailable, or is Not Applicable (NA) because there is no Disturbed Soil Area associated with the project.

<sup>14</sup> Treatment Control Status identified by: device type/number of devices, exempt (“E”), or under consideration (“C”). See Treatment Control Status Legend below for device type abbreviations.

This page was intentionally left blank.



Table 6-3 lists the District's planned monitoring activities.

***Table 6-3: District 2 Monitoring Activities***

<b>Statewide Monitoring Program Activities</b>
<b><i>ASBS Core Monitoring Sites</i></b>
<ul style="list-style-type: none"><li>• District sites include the following:<ul style="list-style-type: none"><li>○ NA</li></ul></li></ul>
<b><i>ASBS Ocean Receiving Water and Reference Monitoring Sites</i></b>
<ul style="list-style-type: none"><li>• District sites include the following:<ul style="list-style-type: none"><li>○ NA</li></ul></li></ul>

This page was intentionally left blank.

## **7 Region-Specific Activities**

---

Section 7 of the DWP identifies the applicable region-specific activities that District 2 has planned for the fiscal year 2019-20 to comply with Attachment V of the Conformed NPDES Permit.

### **North Coast Region**

#### **Riparian Vegetation Removal**

Within riparian areas, vegetation control is manually done. Its removal is limited to instances when it is necessary for preserving public safety or protecting highway structures. Limited right-of-way within riparian areas relative to watershed sizes suggests there is low potential for exceeding water quality objectives associated with removing vegetation. During routine Maintenance activities, riparian vegetation is removed in accordance with BMPs described in the Maintenance Staff Guide. Section 404/401 permitting processes address riparian vegetation removal associated with Construction Projects.

### **Lahontan Region**

#### **Vegetation Removal or Existing Ground Surface Disturbance Prohibition**

District 2 will comply with the vegetation removal or existing ground surface disturbance prohibition requirements within the Lahontan Region as described in the Conformed NPDES Permit.

#### **Project Review Requirements**

District 2 will comply with the project review requirements within the Lahontan Region as described in the Conformed NPDES Permit.

This page was intentionally left blank.

## **8 DWP Noncompliance and Improvements**

---

Section 8 of the DWP identifies the deviations that occurred from the prior DWP that resulted or will result in noncompliance with the Conformed NPDES Permit or SWMP. In addition, it describes the improvements that were performed in response to the incidents of noncompliance. No DWP incidents of noncompliance or resulting improvements were identified for the District.

This page was intentionally left blank.