

**California Department of Transportation
Stormwater Management Program
District 3 Work Plan**

Fiscal Year

2019-2020

CTSW-RT-18-379.06.2



California Department of Transportation
Division of Environmental Analysis
Stormwater Management Program
703 B Street, Marysville, California 95901

<http://www.dot.ca.gov/hq/env/stormwater>

October 1, 2018



For individuals with sensory disabilities, this document is available in alternate formats upon request. Please call or write to the Stormwater Liaison, Caltrans Division of Environmental Analysis, MS-27, P.O. Box 942874, Sacramento, CA 94274-0001, (916) 653-8896 Voice, or dial 711 to use a relay service.

**California Department of Transportation
District 3 Certification
District Work Plan 2019-20**

I certify under penalty of law that this document and all attachments were prepared under my direction or supervision in accordance with a system designed to assure that qualified personnel properly gather and evaluate the information submitted. Based on my inquiry of the person or persons who manage the system, or those persons directly responsible for gathering the information, the information submitted is to the best of my knowledge and belief, true, accurate, and complete. I am aware that there are significant penalties for submitting false information, including the possibility of fine and imprisonment of knowing violations. [40 CFR 122.22(d)]

for 
Amarjeet S. Benipal, District Director

District 3

9/26/2018

Date

This page was intentionally left blank.

Table of Contents

1	Introduction	1-1
2	District Personnel and Responsibilities	2-1
3	District Facilities and Water Bodies	3-1
4	Drinking Water Reservoirs and Recharge Facilities.....	4-1
5	Slopes Prone to Erosion	5-1
6	Implementation.....	6-1
7	Region-Specific Activities	7-1
8	DWP Noncompliance and Improvements	8-1

Figures

Figure 2-1: District 3 Organizational Chart	2-4
Figure 5-1: District 3 2018 Areas Prone to Erosion.....	5-3

Tables

Table 2-1: District 3 Stormwater Personnel and Responsibilities	2-2
Table 2-2: District 3 Signatory Authority for Key Documents.....	2-3
Table 4-1: District 3 Drinking Water Reservoirs and Recharge Facilities	4-1
Table 5-1: District 3 Inventory of Road Segments Prone to Erosion.....	5-1
Table 6-1: District 3 Anticipated Project Development and Construction Schedule.....	6-3
Table 6-2: District 3 Anticipated Significant Road Maintenance Activities	6-16
Table 6-3: District 3 Monitoring Activities	6-17

This page was intentionally left blank.

General Information about the District Work Plan

The District Work Plans (DWPs) describe the organization of each California Department of Transportation (Caltrans) District's stormwater program and outline the planned stormwater activities for the upcoming fiscal year. They are prepared and submitted on October 1 each year. Since the DWP is District-specific, each Regional Water Quality Control Board (RWQCB or Regional Board) is provided a copy of the DWPs relevant to their jurisdiction.

This DWP presents information about District 3's water bodies, Best Management Practices (BMPs), and monitoring programs. It describes how the District will specifically implement the requirements of the Statewide Stormwater Management Plan (SWMP) during fiscal year 2019-20. Implementation activities will be conducted in accordance with the procedures presented in the SWMP. In addition, this DWP fulfills Provision E.3.b of the *National Pollutant Discharge Elimination System (NPDES) Statewide Storm Water Permit Waste Discharge Requirements (WDRs) for State of California Department of Transportation* (Order Number 2012-0011-DWQ, NPDES Number CAS000003, Effective July 1, 2013) (NPDES Permit). The NPDES Permit was amended by Orders WQ 2014-0006-EXEC (January 17, 2014), WQ 2014-007-DWQ (May 20, 2014), and WQ 2015-0036-EXEC (April 7, 2015). A conformed NPDES Permit was issued on April 7, 2015 (Conformed NPDES Permit), available on the California State Water Resources Control Board's (SWRCB) website:

http://www.waterboards.ca.gov/board_decisions/adopted_orders/water_quality/2012/wq2012_0011_dwq_conformed_signed.pdf

The NPDES Permit was further amended by Order WQ 2017-0026-EXEC on November 27, 2017. This permit amendment describes the primary modifications to several Areas of Special Biological Significance (ASBS) sampling locations and incorporation of compliance units crediting due to the SWRCB's adoption of the trash provisions on April 7, 2015 (effective on December 3, 2015).

The DWP's eight sections describe how the District plans to implement the stormwater program during the upcoming fiscal year. Section 1 introduces the DWP, describes its organizational structure, and identifies the key goals and commitments made by the District for the upcoming fiscal year. Section 2 describes the personnel with stormwater operations responsibilities in the District. In Section 3, the District's facilities are listed and categorized by type and location. Section 4 describes and identifies the high-risk locations where spills from the District's owned rights-of-way, roadways or facilities can discharge directly to a drinking water reservoir or ground water recharge facility. In Section 5, the District's road segments that are prone to erosion are identified. Section 6 summarizes the District's implementation activities, including projects that will be in the design and construction phases during the fiscal year, maintenance projects, and planned stormwater monitoring activities. Section 7 identifies the planned region-specific activities (if applicable) to address the requirements listed in Attachment V of the Conformed NPDES Permit. Section 8 identifies deviations that occurred from the prior DWP that resulted or will result in noncompliance with the Conformed NPDES Permit or SWMP and describes improvements performed in response to the incidents of noncompliance.

District Goals and Commitments

The District is actively pursuing options and alternatives to improve on stormwater programmatic partnerships, both through enhanced interagency communications and through the engagement of outside jurisdictions. NPDES and stormwater staff routinely interact with functional units and provide guidance to improve and enhance efficiency through improved informative sharing and creative problem solving. The District has been committed to finding efficient methods for navigating the complex and ever changing stormwater regulatory compliance requirements through the utilization of common sense

approaches and implementation methods meant to preserve regional water quality. In support of this effort and moving forward, the methods and actions to be employed by District NPDES and Stormwater Coordinators to further the District's vision and improve functional unit support (through all divisions) includes: improved project tracking, streamlined technical studies, improved documentation management, early project risk detection and proactive project management, more focused direction and guidance, better team communication, and (when applicable) outside agency interactions. Future goals for the District include: project review and technical study optimization, task order template streamlining, better management of project resources, and a modular approach to administrative processes.

2 District Personnel and Responsibilities

Section 2 of the DWP describes positions, addresses, and telephone numbers of personnel with responsibilities for stormwater operations within the District. This section also identifies positions having signatory authority for various notifications or documents required for submittal by a District (e.g., Project Registration Documents, including Notices of Intents or NOIs).

District NPDES Stormwater Coordinator

The District NPDES Stormwater Coordinators represent District 3 in daily activities with the Central Valley and Lahontan RWQCBs regarding regulatory issues, preparing water quality assessment reports, providing oversight on water quality assessment reports prepared by consultants, and providing guidance to District and North Region staff on water quality issues.

Environmental Engineering Coordinator

The Environmental Engineering Coordinator verifies and ensures compliance with all environmental regulations and permits. They evaluate regulations and make recommendations for Caltrans response. They prepare and provide technical analysis and impact reports to a variety of local, state, and federal agencies. They work closely with other agencies on program-related activities and coordinate the development, design, and construction on a variety of environmental services projects.

Maintenance Coordinator

The Maintenance Stormwater Coordinators oversee District 3's Maintenance Stormwater Program and are responsible for ensuring compliance with the SWMP. They serve as operations advisors to the Maintenance Stormwater Supervisors, prepare the annual Stormwater Operational Plan, conduct facility and field inspections, and generate reports.

Construction Coordinator

The Construction Coordinators provide technical expertise and advice, engineering support, plans and specifications reviews, and constructive feedback to Resident Engineers, designers, and contractors. They provide training programs designed to improve employee knowledge and awareness on water pollution prevention laws, regulations, and BMPs for construction projects in the District.

Right-of-Way (ROW) Coordinator

The ROW Stormwater Coordinator serves as point of contact for ROW Program inquiries, prepares a summary of completed stormwater property inspections for use in annual reports, and reports instances where ROW may conduct construction activities that require development of a Storm Water Pollution Prevention Plan (SWPPP) and related notifications.

Engineering Services (Hydraulics) Representative

The Hydraulics Representative provides assistance with treatment design.

Public Affairs Coordinator

The Public Affairs Coordinator organizes and plans public outreach and coordinates with local groups to arrange campaign presentations and activities.

Encroachment Permits Coordinator

The Encroachment Permits Stormwater Coordinator inspects permit work to ensure compliance with engineering standards and specifications, including BMP's. In addition, the position regularly attends meetings with the public, other agencies, private and public engineers, developers, and manufacturers to discuss, advise, and explain policies, procedures, and permit requirements.

Landscape Architecture Coordinator

The Landscape Architect Coordinator is responsible for determining appropriate project-specific revegetation plans in coordination with other team members such as environmental staff, project engineers, project management, and external agencies.

Table 2-1 lists staff members responsible for implementing the Stormwater Program.

Table 2-1: District 3 Stormwater Personnel and Responsibilities

Staff Name	Title	Phone No.	E-mail	Responsibility
Amarjeet S. Benipal	District Director	(530) 741-4233	amarjeet.benipal@dot.ca.gov	North Region (Districts 1, 2, 3)
Carlos Portillo	Chief, North Region Environmental Planning	(530) 741-5461	carlos.portillo@dot.ca.gov	North Region (Districts 1, 2, 3)
Doug Coleman	Office Chief, Office of Environmental Engineering, South	(530) 741-4539	douglas.coleman@dot.ca.gov	District 3 Stormwater, Hazardous Waste, Air, and Noise
Sean Cross	NPDES Coordinator	(530) 741-4579	sean.cross@dot.ca.gov	District 3
Jarod Barkley	NPDES Coordinator	(530) 741-4158	jarod.barkley@dot.ca.gov	District 3
Rajive Chadha	NPDES Coordinator	(530) 741-4295	rajive.chadha@dot.ca.gov	Projects in Glenn and Butte Counties
Wesley Faubel	Design & Eng. Services Stormwater Coordinator	(530) 225-3412	wesley.faubel@dot.ca.gov	North Region (Districts 1, 2, 3)
Chris Rockey	Chief, Hydraulics	(530) 741-4517	chris.rockey@dot.ca.gov	District 3 Hydraulics
Emmric Lincoln	Maintenance Stormwater Coordinator	(916) 641-1036	emmric.lincoln@dot.ca.gov	District 3
Mike F. Myers	Maintenance Stormwater Crew Supervisor	(530) 741-5320	mike.f.myers@dot.ca.gov	Sutter-Sierra Area
Paul Thornton	Maintenance Stormwater Crew Supervisor	(916) 641-1079	paul.e.thornton@dot.ca.gov	Sunrise Area
Mohammad Asghari	Encroachment Permits Stormwater Coordinator	(530) 634-7603	mohammad.asghari@dot.ca.gov	District 3
Andy Alvarado	Chief, North Region Construction	(530) 741-5590	andy.alvarado@dot.ca.gov	North Region (Districts 1, 2, 3)
Dusty Giffin	Construction Coordinator	(916) 825-5357	dusty.giffin@dot.ca.gov	District 3
Deanna Shoopman	Chief, Public Information	(530) 741-4572	deanna.shoopman@dot.ca.gov	District 3 Public Information

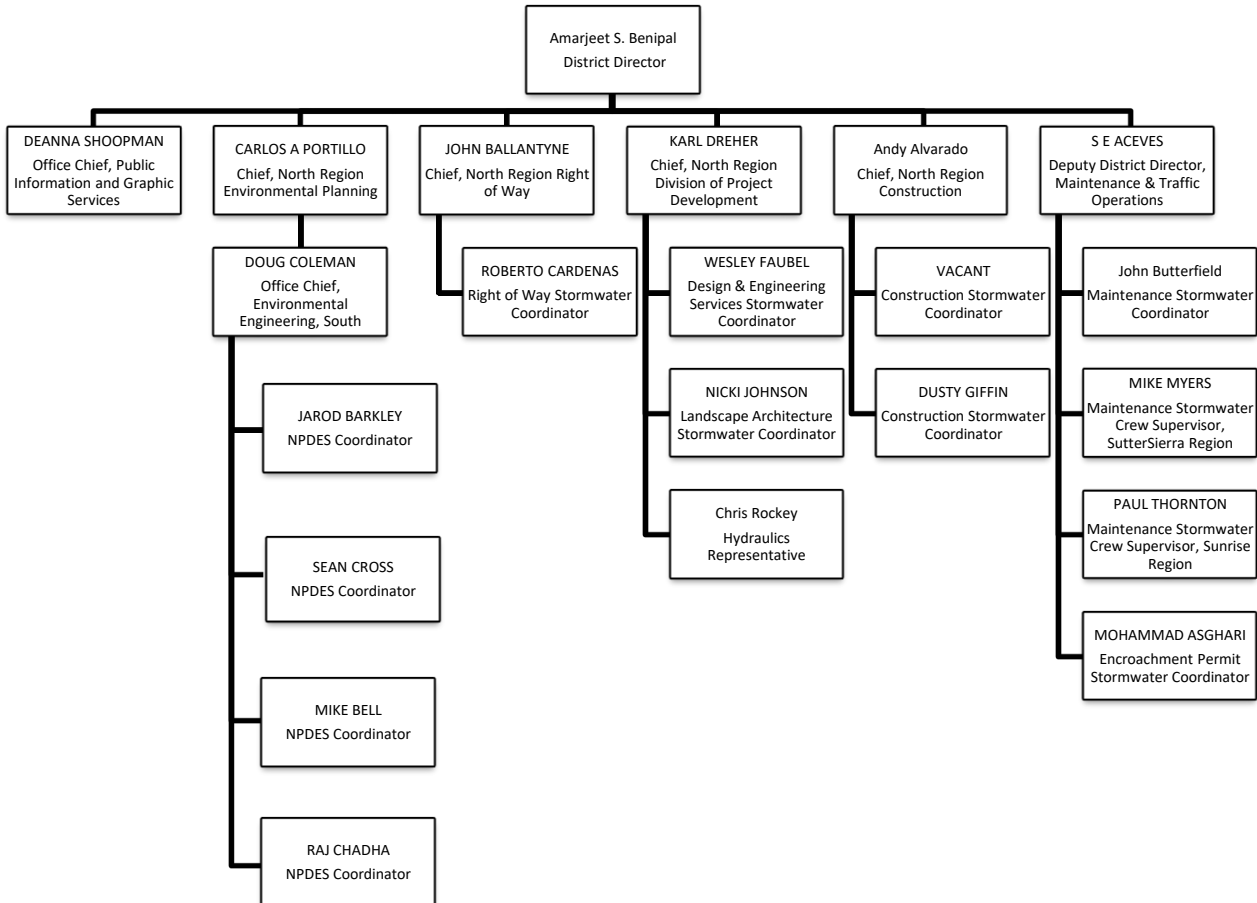
Table 2-2 lists individuals authorized to sign the documents, reports, and other information submitted by the District to either the SWRCB or the RWQCB(s). These individuals/positions may delegate authorization to their staff to sign various documents and reports required for implementation of the Stormwater Program. It also includes delegation of signatory authority for key Conformed NPDES Permit and SWMP required documents.

Table 2-2: District 3 Signatory Authority for Key Documents

Position or Individual	Phone No.	E-mail	Documents Authorized for Signatures
District Director	(530) 741-4233	amarjeet.benipal@dot.ca.gov	All District Documents, Legally Responsible Person (LRP – SMARTS)
Deputy District Director, Construction	(530) 218-8963	andy.alvarado@dot.ca.gov	All District Documents
Chief, North Region Environmental Planning	(530) 741-5461	carlos.portillo@dot.ca.gov	All District Documents
Deputy District Director, Maintenance & Traffic Operations	(530) 741-4318	sergio.aceves@dot.ca.gov	All District Documents
Chief, North Region Division of Project Development	(530) 741-4168	karl.dreher@dot.ca.gov	All District Documents
Chief, North Region Right of Way	(530) 741-4499	john.l.ballantyne@dot.ca.gov	All District Documents
Chief, Office of Environmental Engineering, South	(530) 741-4539	douglas.coleman@dot.ca.gov	All District Documents except District Work Plan. Notice of Soil Reuse with Aerially Deposited Lead (ADL)
Construction Coordinator	(916) 825-5357	dusty.giffin@dot.ca.gov	SWPPP, Notice of Intent (NOI), Notice of Termination (NOT), Notice and Report of Non-Compliance, Discharge or threat of Discharge Notification, Incident Report Form
Construction Engineers and Resident Engineers	-	Various	Notice and Report of Non-Compliance, Discharge or Threat of Discharge Notification, Report of Illegal Connection/Illicit Discharge (IC/ID), Incident Report Form
Encroachment Permits Stormwater Coordinator	(530) 634-7603	mohammad.asghari@dot.ca.gov	SWPPPs, NOI/NOT, Notice and Report of Non-Compliance, Discharge or Threat of Discharge Notification, and Report of IC/ID, Incident Report Form
Maintenance Managers, Superintendents, Supervisors and HazMat Manager	-	Various	SWPPPs, Notice and Report of Non-Compliance, Discharge or Threat of Discharge Notification, NOI/NOT, Incident Report Form
Maintenance Stormwater Coordinator	(916) 641-1036	emmril.lincoln@dot.ca.gov	SWPPPs, NOI/NOT, Notice and Report of Non-Compliance, Discharge or Threat of Discharge Notification, and Report of IC/ID, Incident Report Form
Facility Supervisor	-	Various	Facility Pollution Prevention Plans (FPPP)

Figure 2-1 shows an organizational chart describing key persons with responsibilities for stormwater operations within the District.

Figure 2-1: District 3 Organizational Chart



3 District Facilities and Water Bodies

Section 3 of the DWP identifies maintenance stations (including crew functions and street addresses), vista points, commercial vehicle enforcement areas, roadside rest areas, park and ride facilities, toll road and bridge plazas, equipment shops, and other Caltrans facilities. Facility Pollution Prevention Plans (FPPPs) are prepared and implemented at Maintenance facilities within the District's boundaries, such as maintenance stations, material storage facilities, and equipment shops. To comply with Department of Homeland Security policy, the table and map identifying these facilities is not available to the public. For more information, contact Caltrans' Office of Emergency Management or Division of Environmental Analysis.

This page was intentionally left blank.

4 Drinking Water Reservoirs and Recharge Facilities

Section 4 of the DWP describes and identifies the high-risk areas, which are locations where spills or other releases from District-owned rights-of-way, roadways, or facilities may discharge directly to municipal or domestic water supply reservoirs or ground water percolation facilities. Projects that potentially drain to these high-risk areas consider project features that enhance spill response.

Drinking water reservoirs and recharge facilities are areas such as locations where spills from District-owned ROWs or facilities can discharge directly to municipal or domestic water supply reservoirs or ground water percolation facilities. To generate the list of municipal, domestic water supply reservoirs, and ground water percolation facilities, the District first contacted known public and private water supply providers. From the information received, the District determined which facilities were susceptible to a direct spill from a District activity or facility. This determination was based on proximity between the water body and the District's facility, use characteristics of the facility, and the probable spill response time.

When planning projects within these defined areas, District 3 considers project design features for aiding in the prevention of accidental spills that could impact the area. These features are typically commensurate with safety improvements for reducing vehicle accidents. Examples of these features may include, but are not limited to, median barrier, guardrail, signalization, and vehicle restrictions. Features considered for improving spill response time typically include elongated drainage paths, call boxes, signage, or video surveillance.

A list of drinking water reservoirs and recharge facilities within District 3 is presented in Table 4-1.

Table 4-1: District 3 Drinking Water Reservoirs and Recharge Facilities

Road Segment/ Facility	County	Regional Board	Drinking Water Reservoir or Recharge Facility Area	Description	Comments
70 / 30.0	Butte	5	Lime Saddle Treatment Plant	Water for Del Oro Water Company – Lime Saddle Marina	1.5 miles to facility
162 / 21.3	Butte	5	Lake Oroville Spillway	Water for CSP Lake Oroville – Spillway	2.0 miles to facility
50 / 3.4	El Dorado	5	Bass Lake Water Treatment Plant	Water for El Dorado ID – Main	1.8 miles to facility
50 / 29.5	El Dorado	5	Reservoir 01 Water Treatment Plant	Water for El Dorado ID – Main	0.3 mile to facility
193 / 5.9	El Dorado	5	Auburn Lake Trails	Water for Georgetown Divide PUD	0.1 mile to facility
80 / 2.37	Nevada	5	Lake Serena Treatment Plant	Water for Sierra Lakes County Water District	2.1 miles to facility
80 / 6.77	Nevada	6	Lake Angela	Water for Donner Summit Public Utility District	1.3 miles to facility
80 / 12.4	Nevada	6	Donner Lake Water Treatment Plant	Water to Donner Lake Water Company	0.2 mile to facility
28 / 7.24	Placer	6	Lake Tahoe Intake	Water for Agate Bay Water Company	0.0 mile to facility
80 / 22.2	Placer	6	Bowman Water Treatment Plant	Water for Placer CWA – Auburn/Bowman	0.5 mile to facility
16 / 19.5	Sacramento	5	Consumnes River (Lake Chesbro)	Water for Rancho Murieta CSD	2.3 miles to facility
49 / 33.3	Sierra	5	Sardine Lake	Water for Sardine Lake Resort	1.0 mile to facility

This page was intentionally left blank.

5 Slopes Prone to Erosion

Section 5 of the DWP identifies the road segments within District 3 that have slopes which are prone to erosion and sediment discharge. The road segments that are located in sensitive watersheds, or where there is an existing or potential threat to water quality, will be prioritized for implementing appropriate controls to the maximum extent practicable. In each Annual Report, the status of stabilization activities where applicable will be reported. Table 5-1 is District 3's inventory of vulnerable road segments where erosion occurs and stabilization may be required, or where rock cut slopes are located and rock falls have occurred.

Table 5-1: District 3 Inventory of Road Segments Prone to Erosion

Road Segment	County	Regional Board	Watershed	Scheduled Stabilization Date
Route 32, PM -29.792-37.232	BUT	Central Valley	Eastern Tehama	TBD
Route 70, PM 35-46	BUT	Central Valley	Feather River	TBD
Route 162, PM 27.482-27.624	BUT	Central Valley	Feather River	TBD
Route 191, PM 8.64-9.21	BUT	Central Valley	Colusa Basin	TBD
Route 16, PM 0-7.256	COL	Central Valley	Cache Creek	TBD
Route 20, PM 1-1.2	COL	Central Valley	Cache Creek	TBD
Route 20, PM 11.05-11.05	COL	Central Valley	Cortina	TBD
Route 49, PM 20.3-32.6	NEV	Central Valley	Yuba River	TBD
Route 49, PM 0.02-2.36	PLA	Central Valley	American River	TBD
Route 80, PM 16.94-17.19	PLA	Central Valley	American River	TBD
Route 49, PM 0-29	SIE	Central Valley	Yuba River	TBD

Figure 5-1 is a map showing California State Highway System areas that required maintenance within District 3 in 2018, including rock cut slopes, landslides, and moderate soil erosion.

This page was intentionally left blank.

District 3

California State Highway System 2018 Areas Prone to Erosion

Caltrans District Boundary



- Areas Prone to Erosion
- County Boundary
- Water Feature

NOTE:

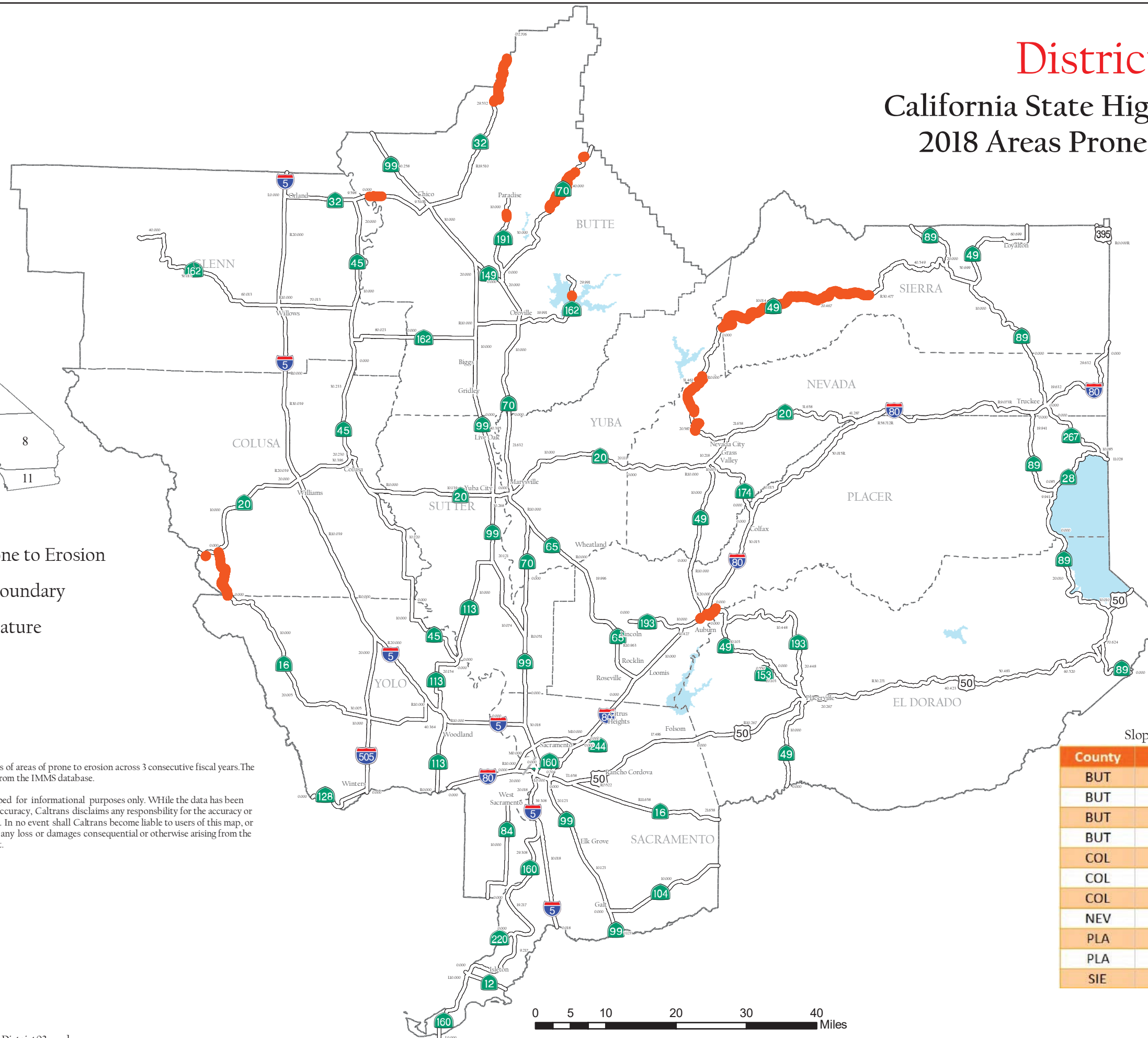
Map indicates locations of areas of prone to erosion across 3 consecutive fiscal years. The data presented comes from the IMMS database.

This map was developed for informational purposes only. While the data has been examined for general accuracy, Caltrans disclaims any responsibility for the accuracy or correctness of the data. In no event shall Caltrans become liable to users of this map, or to any other party, for any loss or damages consequential or otherwise arising from the use of this map product.



State of California
Department of Transportation
Division of Maintenance GIS
July 19, 2018

H:\GIS\Erosion\MXD\SlopesProne 2018\2018 District03.mxd



Slopes Prone to Erosion

County	Route	PM1	PM2
BUT	32	29.792	37.232
BUT	70	35	46
BUT	162	27.482	27.624
BUT	191	8.64	9.21
COL	16	0	7.256
COL	20	1	1.2
COL	20	11.05	11.05
NEV	49	20.3	32.6
PLA	49	0.02	2.36
PLA	80	16.94	17.19
SIE	49	0	29

Figure 5-1

This page was intentionally left blank.

6 Implementation

Section 6 of the DWP identifies the specific projects in which work is planned during the fiscal year within the Project Approval/Environmental Document (PA/ED), Plans, Specifications, and Estimates (PS&E), and Construction development phases. The anticipated schedule of construction and maintenance projects is subject to change. These projects are limited to those meeting any of the following criteria:

1. All projects that require soil disturbing activities
2. Adjacent to a Drinking Water or Ground Water Recharge Facility, as described in Section 4 of the DWP
3. A supplemental environmental project
4. Additional projects per agreement between the District and local RWQCB

Projects listed in Table 6-1 include (where applicable):

1. Location (county, route and post mile limits)
2. Project number (expense authorization)
3. Basic Project Description
4. Disturbed soil area
5. Presence of receiving waters within or adjacent to project limits, with special designation for 303(d) listed water bodies (adopted)
6. Drinking Water Reservoir or Ground Water Recharge Facility within or adjacent to project (as identified in Section 4 of the DWP)
7. Projected milestone dates of PA/ED, PS&E, begin Construction, and end Construction
8. Description of Construction Controls
9. Post-Construction Treatment Controls (types and quantities)
10. Dredge and fill (CWA-401) activities within the project
11. Other Regional Water Control Board Permits Required
12. Potential and Actual Impacts of Project's Discharge
13. Area of New Impervious Surface
14. Percentage of New Impervious Surface to Existing Impervious Surface

The updated lists of projects meeting these criteria will also be provided to the RWQCB annually on October 1st. Furthermore, this section identifies planned maintenance projects with soil disturbance. Information associated with the project includes location, affected water body, and area of disturbance. In addition, this section also describes the planned stormwater monitoring activities within the District; however, these activities may be conducted jointly with other Districts and HQ. Consequently, the information contained in a DWP may be repeated in another DWP.

This page was intentionally left blank.

Table 6-1: District 3 Anticipated Project Development and Construction Schedule

No.	EA	Project Location					Project Description ^{1,2}	Water Bodies Within or Adjacent to Project Limits ³	Dredge and Fill Activities (Y/N/NA) ⁴	Other Regional Water Board Permits Required ⁵	Impacts of Potential and Actual Project's Discharge ⁶	Disturbed Soil Area (acres)	Area of New Impervious Surface (acres)	Percentage of New Impervious Surface to Percentage of Existing Impervious Surface	Description of Construction Controls (SWPPP/WPCP/TBD) ⁷	Post-Construction Treatment Control Type, Quantity ⁸	Anticipated Project Delivery Schedule		Construction Period	
		Co.	Route	Begin PM	End PM	RB ⁹											PA&ED Date	PS&E Date	Start Date	End Date
1	03-0A870	Yolo	16	0	19.3	5	CAPM	TBD	N	N/A	TBD	0	0	-	TBD	E	15-Dec-17	1-Aug-18	1-Apr-19	1-Oct-19
2	03-0A960	Yolo	45	0	12.9	5	CAPM	TBD	N	N/A	TBD	0	0	-	TBD	E	15-Dec-17	1-Aug-18	1-Apr-19	1-Oct-19
3	03-0C470	Yolo	16	20.5	31.6	5	Safety Improvement Between Brooks and Interstate 5	Cache Creek, Taylor Creek, Saltroy Creek, Taylor Creek, Willow Creek, etc.	Y	N/A	TBD	380	32	-	SWPPP	C	24-Jun-15	1-Nov-17	15-Sep-18	1-Nov-20
4	03-0C472	Yolo	16	20.5	31.6	5	Add turn pockets, shift alignment, straighten curve	Lower Cache Creek/Lower Putah Creek	N	N/A	TBD	29.2	10.2	-	SWPPP	BS, 40	24-Jun-15	27-Mar-17	1-Sep-18	15-Nov-19
5	03-0E960	El Dorado	49	11.7	12.4	5	REALIGN AND REDESIGNATE ROADWAY	MARTINEZ CREEK/WEBER CREEK/SOUTH FORK AMERICAN RIVER	Y	N/A	TBD	7.5	2.16	-	SWPPP	C	21-Jun-13	15-Jul-17	1-Feb-18	1-Mar-19
6	03-0F100	Nevada	VAR	0	0	5	repair sand house	TBD	N	N/A	TBD	0	0	-	TBD	C	7-Mar-18	3-Oct-18	1-Sep-19	1-Oct-20
7	03-0F250	Yolo	80	11.3	11.3	5	replace bearing pads-2 structures, and adjust/repl	Sacramento	N	N/A	TBD	6	0	-	SWPPP	E	1-Sep-18	1-Mar-20	1-Oct-20	1-Nov-22
8	03-0F280	Sacramento	99	7.4	8.4	1	replace nonstandard bridge rail on both sides of	COSUMNES RIVER, LOWER (BELOW MICHIGAN BAR; PARTLY IN DELTA WATERWAYS, EASTERN PORTION) COSUMNES RIVER OVERFLOW	N	N/A	TBD	10.5	0.3	-	SWPPP	E	1-Jul-19	1-Mar-20	15-Oct-20	1-Nov-24
9	03-0F290	Butte	99	15.41	15.41	5	Replace nonstandard bridge rail	TBD	N	N/A	TBD	0	0	-	TBD	E	1-Feb-18	15-Jun-19	15-Mar-20	1-Nov-21
10	03-0F310	El Dorado	49	23.6	24.5	5	Replace Bridge.	((SOUTH FORK AMERICAN RIVER (BELOW SLAB CREEK RESERVOIR TO FOLSOM LAKE))	Y	N/A	TBD	5	1	-	SWPPP	C	10-Mar-15	9-May-16	10-Jan-17	12-Jan-19
11	03-0F351	Sacramento	VAR	0	0	5	Install Ramp Meters	Lower American/Franklin	N	N/A	TBD	2.7	0	-	SWPPP	C	28-Dec-15	27-Jan-17	1-Oct-17	30-Dec-18
12	03-0G200	Sierra	49	7.8	8.5	5	Replace guard railing	TBD	N	N/A	TBD	0	0	-	TBD	E	1-Mar-16	-	1-Mar-17	1-Oct-18
13	03-0G340	Nevada	80	12.5	21.2	6	Bonded wearing course - Gap Graded	(TRUCKEE RIVER)	N	N/A	TBD	-	-	-	WPCP	E	8-Apr-16	-	6-Apr-17	1-Nov-18
14	03-0G490	D03-Various	VAR	0	0	6-May	Bridge Overlay	((UPPER TRUCKEE RIVER (BELOW CHRISTMAS VALLEY)))/(LAKE TAHOE)/(TRUCKEE RIVER)	N	N/A	TBD	-	-	-	WPCP	E	1-Mar-16	-	11-Jan-17	1-Nov-18
15	03-0G500	Yolo	50	2.5	2.8	5	spot blast clean and prep, then paint	DELTA WATERWAYS NORTHERN PORTION	N	N/A	TBD	-	-	-	WPCP	E	8-Feb-16	-	-	1-Oct-18

¹ Supplemental Environmental Projects designated as “SEP.”

² Projects adjacent to Drinking Water Reservoirs or Ground Water Recharge Facilities are noted (DW) and (GW), respectively.

³ Water bodies with designation for 303(d) designation are noted in parentheses.

⁴ If yes, a 401 permit will be required for this project. NA = Not Available at this time.

⁵ Regional Water Board Permits required other than Construction General Permit and Clean Water Act Section 401 water quality certification, such as Waiver of Discharge Requirements, Dewatering Permits, Bridge Painting WDRs, etc.

⁶ This information may come from the Water Quality Assessment Report prepared for each project, a Water Quality Technical Memorandum, or other document that evaluates the water quality impacts of a project.

⁷ A description of the Construction Controls is available in the project’s Storm Water Pollution Prevention Plan (SWPPP), Water Pollution Control Plan (WPCP), or is To Be Determined (TBD) if the Disturbed Soil Area is unavailable.

⁸ Treatment Control Status identified by: device type/number of devices, exempt (“E”), or under consideration (“C”). See Treatment Control Status Legend below for device type abbreviations.

⁹ Regional Board

Table 6-1: District 3 Anticipated Project Development and Construction Schedule

No.	EA	Project Location					Project Description ^{1,2}	Water Bodies Within or Adjacent to Project Limits ³	Dredge and Fill Activities (Y/N/NA) ⁴	Other Regional Water Board Permits Required ⁵	Impacts of Potential and Actual Project's Discharge ⁶	Disturbed Soil Area (acres)	Area of New Impervious Surface (acres)	Percentage of New Impervious Surface to Percentage of Existing Impervious Surface	Description of Construction Controls (SWPPP/WPCP/TBD) ⁷	Post-Construction Treatment Control Type, Quantity ⁸	Anticipated Project Delivery Schedule		Construction Period	
		Co.	Route	Begin PM	End PM	RB ⁹											PA&ED Date	PS&E Date	Start Date	End Date
16	03-0G520	D03-Various	VAR	0	0	5	bridge deck preventative maintenance polyester & m	ND	N	N/A	TBD	-	-	-	WPCP	E	8-Apr-16	-	1-Jul-17	1-Nov-18
17	03-0G540	El Dorado	50	15.4	18.8	5	Mill and Replace with RHMA Overlay - OGAC	WEBER CREEK/HANGTOWN CREEK	N	N/A	TBD	-	-	-	WPCP	E	17-Feb-16	-	18-May-17	1-Nov-18
18	03-0G550	Sacramento	80	9.6	12.9	5	RHMA Overlay	TBD	NA	N/A	TBD	0	0	-	TBD	E	6-Apr-16	-	1-May-17	1-Nov-18
19	03-0G560	Sierra	49	4.5	16.9	5	RHMA Overlay	ND	N	N/A	TBD	-	-	-	WPCP	E	29-Sep-16	-	30-Jun-17	1-Nov-18
20	03-0G570	Sierra	89	19.9	29.6	5	RHMA Overlay	ND	N	N/A	TBD	-	-	-	WPCP	E	5-Jul-16	-	15-Mar-17	1-Nov-18
21	03-0G580	Sutter	113	11.7	16.4	5	RHMA Overlay	ND	N	N/A	TBD	-	-	-	WPCP	E	21-Apr-16	-	13-Mar-17	1-Nov-18
22	03-0G600	D03-Various	VAR	0	0	5	Digouts	ND	N	N/A	TBD	-	-	-	WPCP	E	18-Mar-16	-	21-Dec-16	1-Oct-18
23	03-0G610	Yolo	84	10.9	13.3	5	CIR w/Overlay	(DELTA WATERWAYS (NORTHERN PORTION))	N	N/A	TBD	-	-	-	WPCP	E	13-Jun-16	-	6-Apr-17	1-Nov-18
24	03-0G660	D03-Various	VAR	0	0	5	Minor paving at 21 Park and Ride lots and 1 SRRA	(SACRAMENTO RIVER (KNIGHTS LANDING TO THE DELTA))/ (DELTA WATERWAYS (NORTHERN PORTION))	N	N/A	TBD	-	-	-	WPCP	C	15-Apr-16	-	1-Apr-17	1-Nov-18
25	03-0G710	Yolo	VAR	0	0	5	Slab replacement	DELTA WATERWAYS NORTHERN PORTION	N	N/A	TBD	-	-	-	WPCP	E	21-Jun-16	-	13-Apr-17	1-Nov-18
26	03-0G820	Sacramento	5	23.3	23.4	5	Culvert Repair	TBD	NA	N/A	TBD	0	0	-	TBD	E	1-Dec-18	-	-	1-Oct-19
27	03-0G920	Nevada	80	26.8	27.3	6	Polyester Concrete Overlay	TBD	NA	N/A	TBD	0	0	-	TBD	C	7-Dec-17	-	16-Aug-18	16-Aug-18
28	03-0G930	Yolo	113	11.8	14	5	Concrete Overlay	(LOWER CACHE CREEK (CLEAR LAKE DAM TO CACHE CREEK SETTLING BASIN NEAR YOLO BYPASS))	N	N/A	TBD	-	-	-	WPCP	E	24-Jan-17	-	1-Jan-18	24-Aug-18
29	03-0G950	Nevada	80	2.48	27.99	6	Remove AC, place methacrylate, repair bridge joint	TBD	NA	N/A	TBD	0	0	-	TBD	C	1-Jul-17	-	1-Jun-18	10-Oct-18
30	03-0G970	Placer	193	8.82	8.82	5	Abandon and place culvert	TBD	NA	N/A	TBD	0	0	-	TBD	C	20-Apr-18	-	31-Dec-18	31-Dec-18
31	03-0G980	Placer	80	44.7	55.7	5	Replace Joint Seals / Slab replacement	TBD	NA	N/A	TBD	0	0	-	TBD	C	1-Jul-17	-	1-Apr-18	1-Mar-19
32	03-0G990	Yolo	84	5	10.9	5	Full Depth Reclamation-Foamed Asphalt	TBD	NA	N/A	TBD	0	0	-	TBD	C	1-Aug-17	-	9-Jan-19	1-Oct-19
33	03-0H040	Yuba	49	5.9	6	5	Repair Landslide with engineered geotechnical solu	TBD	N	N/A	TBD	0	0	-	TBD	C	1-Jan-18	1-Feb-18	2-Apr-19	1-Oct-19
34	03-0H050	Sacramento	5	23.6	24.7	5	Construct new bridge across Sacramento River connection	TBD	N	N/A	TBD	0	0	-	TBD	C	1-Jun-17	1-Aug-18	1-Jun-19	1-Dec-21
35	03-0H080	Sacramento	50	0.6	5.3	5	rehabilitate pavement	TBD	N	N/A	TBD	0	0	-	TBD	C	1-Dec-18	15-Dec-19	1-Jul-20	1-Dec-24
36	03-0H090	Yolo	84	0	15.68	5	CIR W/HMA Overlay	TBD	N	N/A	TBD	0	0	-	TBD	C	1-Feb-18	1-Oct-18	1-May-19	1-Dec-21

Table 6-1: District 3 Anticipated Project Development and Construction Schedule

No.	EA	Project Location					Project Description ^{1,2}	Water Bodies Within or Adjacent to Project Limits ³	Dredge and Fill Activities (Y/N/NA) ⁴	Other Regional Water Board Permits Required ⁵	Impacts of Potential and Actual Project's Discharge ⁶	Disturbed Soil Area (acres)	Area of New Impervious Surface (acres)	Percentage of New Impervious Surface to Percentage of Existing Impervious Surface	Description of Construction Controls (SWPPP/WPCP/TBD) ⁷	Post-Construction Treatment Control Type, Quantity ⁸	Anticipated Project Delivery Schedule		Construction Period	
		Co.	Route	Begin PM	End PM	RB ⁹											PA&ED Date	PS&E Date	Start Date	End Date
37	03-OH100	Sacramento	5	13	24.9	5	Roadway Rehabilitation	(DELTA WATERWAYS (NORTHERN PORTION))/ (LOWER AMERICAN RIVER (NIMBUS DAM TO CONFLUENCE WITH SACRAMENTO RIVER))	Y	N/A	TBD	51	9	-	SWPPP	C	29-Dec-16	15-Jan-17	26-Jan-19	15-Dec-23
38	03-OH160	Yuba	70	15.07	16.5	5	Road Rehabilitation	TBD	N	N/A	TBD	0	0	-	TBD	C	2-Jan-18	1-Jun-18	1-Feb-19	1-Nov-21
39	03-OH170	Colusa	20	32.48	32.74	5	Widen shoulder, add curb, gutter and sidewalk	TBD	N	N/A	TBD	0	0	-	TBD	C	15-Apr-16	14-Oct-16	1-May-17	1-Oct-18
40	03-OH220	Nevada	49	7.5	14.4	5	Culvert Rehabilitation	Various	N	N/A	TBD	0	0	-	TBD	C	1-Sep-17	28-Feb-19	30-Oct-19	30-Oct-20
41	03-OH230	Yolo	16	25.22	25.5	5	Widen Shoulder, remove vegetation	TBD	N	N/A	TBD	0	0	-	TBD	C	1-Dec-17	1-Nov-18	15-May-19	1-Nov-19
42	03-OH240	Nevada	20	29.7	30.9	5	Widen shoulders, improve super elevation, remove tr	FISH CREEK/NORTH FORK DEER CREEK	Y	N/A	TBD	16.5	3.2	-	SWPPP	C	1-Feb-19	1-Mar-20	1-Nov-20	1-Nov-22
43	03-OH270	Yolo	VAR	0	0	5	modify signal controllers, install interconnect ca	TBD	N	N/A	TBD	0	0	-	WPCP	E	30-Dec-16	1-Sep-17	1-Jun-18	1-Nov-18
44	03-OH320	D03-Various	VAR	0	0	5	Upgrade and place Pedestrian Facilities	TBD	N	N/A	TBD	0	0	-	TBD	E	1-Aug-17	1-Dec-19	1-Sep-20	1-Dec-21
45	03-OH330	Butte	99	13.25	45.92	5	Bridge Rail Replacement	TBD	N	N/A	TBD	0	0	-	TBD	E	1-Feb-18	15-Jul-19	1-Apr-20	1-Jun-21
46	03-OH340	Sacramento	99	22.59	22.6	5	Replace Bridge Deck on Sac 99 - BR 24-0154; Replace	EL DORADO IRRIGATION DISTRICT MAIN CANAL, NORTH FORK WEBER CREEK	N	N/A	TBD	0.11	-	-	WPCP	E	1-Aug-17	1-Jun-19	1-Nov-19	15-Dec-20
47	03-OH341	El Dorado	50	28.84	28.86	5	Replace Sawmill UC	Weber Creek	N	N/A	TBD	0.11	0	-	TBD	E	1-Aug-17	1-Jun-19	1-Feb-20	1-Dec-20
48	03-OH342	Sacramento	99	22.59	22.6	5	Rehab Bridge Deck on 21st Ave UC	TBD	NA	N/A	TBD	0	0	-	TBD	C	1-Aug-17	20-Aug-18	15-Apr-19	15-Apr-20
49	03-OH400	D03-Various	VAR	0	0	TBD	Upgrading EMS signs to LED. Installation of Fiber	TBD	N	N/A	TBD	0	0	-	TBD	E	1-Jan-18	1-Aug-18	1-Apr-19	1-Apr-21
50	03-OH410	D03-Various	VAR	0	0	TBD	Repair existing AVC and install new AVC's	TBD	N	N/A	TBD	0	0	-	TBD	E	1-Jan-18	1-Aug-18	1-Mar-19	1-Sep-19
51	03-OH420	D03-Various	VAR	0	0	TBD	Repair existing continuous count stations, install	TBD	N	N/A	TBD	0	0	-	TBD	E	1-Jan-18	1-Sep-18	1-Mar-19	1-Sep-19
52	03-OH430	Sacramento	5	10.9	25.7	5	Restrip freeway to add aux lanes	TBD	N	N/A	TBD	0	0	-	TBD	E	5-Jan-17	2-Mar-18	5-Feb-19	9-Apr-21
53	03-OH460	Placer	80	2.9	2.9	5	Widen onramp and structure over Miners Ravine	MINER RAVINE	N	N/A	TBD	2.5	2.1	-	SWPPP	C	15-Aug-17	1-Sep-18	15-Apr-19	15-Oct-19
54	03-OH470	Sacramento	80	1.16	11.31	5	Rahab Pavement (HMA & PCC)	TBD	N	N/A	TBD	0	0	-	TBD	C	3-Oct-17	30-Nov-18	15-Jul-19	15-Oct-20
55	03-OH480	Sacramento	99	0	21.5	5	RHMA Overlay with Gore Paving	ND	N	N/A	TBD	0.77	0.77	-	WPCP	E	1-Jun-17	1-Jul-18	1-Dec-18	1-Dec-19
56	03-OH490	D03-Various	VAR	0	0	5	Replace signs, sign lighting	ND	N	N/A	TBD	0	0	-	WPCP	E	3-Apr-17	15-Aug-17	15-Apr-18	15-Jun-19
57	03-OH500	El Dorado	50	0	80.44	6-May	Upgrade MBGR, add concrete barrier to transitions	TBD	N	N/A	TBD	0	0	-	TBD	E	11-Apr-17	1-Aug-18	1-Apr-19	1-Dec-21

Table 6-1: District 3 Anticipated Project Development and Construction Schedule

No.	EA	Project Location					Project Description ^{1,2}	Water Bodies Within or Adjacent to Project Limits ³	Dredge and Fill Activities (Y/N/NA) ⁴	Other Regional Water Board Permits Required ⁵	Impacts of Potential and Actual Project's Discharge ⁶	Disturbed Soil Area (acres)	Area of New Impervious Surface (acres)	Percentage of New Impervious Surface to Percentage of Existing Impervious Surface	Description of Construction Controls (SWPPP/WPCP/TBD) ⁷	Post-Construction Treatment Control Type, Quantity ⁸	Anticipated Project Delivery Schedule		Construction Period	
		Co.	Route	Begin PM	End PM	RB ⁹											PA&ED Date	PS&E Date	Start Date	End Date
58	03-0H510	Yuba	70	11	13.6	5	Install new concrete barrier correct drainage	Undefined	N	N/A	TBD	0	3	-	TBD	C	1-Aug-17	15-Aug-18	1-Apr-19	1-Dec-19
59	03-0H530	Sacramento	80	15.2	17	5	Antelope Truck Scales	TBD	N	N/A	TBD	0	0	-	TBD	C	1-Mar-18	1-Aug-18	1-Apr-19	1-Jul-19
60	03-0H540	D03-Various	80	0	0	TBD	Install Fiber Optic Cables	TBD	N	N/A	TBD	0	0	-	TBD	E	1-Mar-18	15-Sep-19	15-May-20	15-Nov-20
61	03-0H570	Sacramento	50	10.84	10.99	5	modify ramp intersections, lengthen turn pocket	Lower American River	N	N/A	TBD	4.58	0.87	-	SWPPP	C	1-Aug-17	-	1-Jul-18	2-Jan-20
62	03-0H580	Sacramento	50	3.5	3.5	5	Reconstruct, widen, signalize off-ramp intersection	TBD	N	N/A	TBD	0	0	-	TBD	C	10-Dec-16	1-Sep-18	9-Apr-19	10-Oct-19
63	03-0H680	D03-Various	VAR	0	0	TBD	Replacement of ADIEM crash cushion and sand barrel	TBD	NA	N/A	TBD	0	0	-	TBD	E	1-Jul-19	15-Sep-20	1-Apr-21	1-Oct-22
64	03-0H690	D03-Various	VAR	0	0	TBD	Construct Turnouts	TBD	NA	N/A	TBD	0	0	-	TBD	C	1-Jul-19	1-Aug-20	1-Apr-21	1-Dec-22
65	03-0H720	Placer	80	0	69.77	TBD	Upgrade MBGR to current standards	TBD	NA	N/A	TBD	0	0	-	TBD	E	15-Jan-19	15-Jun-20	1-Mar-21	15-Dec-21
66	03-0H790	Glenn	162	49.94	49.94	5	Replace box culvert with precast box culvert and p	TBD	NA	N/A	TBD	0	0	-	TBD	C	1-Feb-17	1-Oct-17	1-Jul-18	1-Nov-18
67	03-0H810	Sacramento	80	9.401	9.452	5	Install Chain Link Fence	TBD	NA	N/A	TBD	0	0	-	TBD	E	5-Sep-18	1-Sep-18	5-Jun-19	1-Nov-19
68	03-0H830	El Dorado	49	10.7	11.239	5	Widen shoulders to 8 ft. to provide pedestrian/bike	TBD	NA	N/A	TBD	0	0	-	TBD	C	1-Feb-18	1-Sep-18	1-Mar-19	1-Nov-19
69	03-0H860	D03-Various	VAR	0	0	TBD	Replacement of ADIEM crash cushions with lower mai	TBD	NA	N/A	TBD	0	0	-	TBD	E	5-Oct-17	1-Sep-17	1-Apr-18	1-Nov-18
70	03-0H880	D03-Various	50	0	0	5	Removal of abandoned on-ramps at Latrobe Rd and Ho	TBD	NA	N/A	TBD	0	0	-	TBD	E	5-Sep-18	-	1-May-19	1-Oct-19
71	03-0H890	Sutter	20	13.4	13.6	5	Install right turn pocket on WB Sut-20 to George W	TBD	NA	N/A	TBD	0	0	-	TBD	C	1-Jul-18	15-Oct-18	1-May-19	1-Oct-19
72	03-0H910	Yolo	16	25.67	38.56	5	Install street lighting at 3 locations on YOL 16	TBD	NA	N/A	TBD	0	0	-	TBD	E	5-Nov-18	15-Jan-19	1-Jun-19	1-Oct-19
73	03-0H920	Nevada	80	50.7	50.7	5	Repair and paint Whitmore Maint Station	TBD	NA	N/A	TBD	0	0	-	TBD	E	1-Mar-18	-	1-Jan-19	1-Jan-20
74	03-1A810	Glenn	162	37.6	84.6	5	CIR with HMA overlay	TBD	N	N/A	TBD	0	0	-	TBD	E	15-Dec-18	1-Aug-19	1-Apr-20	1-Oct-21
75	03-1A820	Glenn	45	0	23.2	5	CAPM	TBD	N	N/A	TBD	0	0	-	TBD	C	15-Dec-17	1-Aug-18	1-Apr-19	1-Oct-19
76	03-1A920	Sutter	20	5	11.3	5	Sutter Bypass Widening & Rehab	(SUTTER BYPASS)/SNAKE RIVER/FARINGTON LATERAL/LITTLE BLUE CREEK/(WADSWORTH CANAL)	Y	N/A	TBD	58	6	-	SWPPP	C	1-Dec-16	1-Feb-18	1-Oct-18	15-Dec-20
77	03-1E060	Yuba	70	15.5	16.4	5	Replace Bridge	(JACK SLOUGH)	Y	N/A	TBD	70.3	8.4	-	SWPPP	C	1-May-17	1-May-19	1-Dec-19	1-Dec-21
78	03-1E270	Sacramento	50	12.5	15.8	5	CONSTRUCT NEW INTERCHANGE	Buffalo Creek	N	N/A	TBD	28		-	SWPPP	C	13-Nov-15	1-Jul-19	1-Nov-19	1-Nov-22

Table 6-1: District 3 Anticipated Project Development and Construction Schedule

No.	EA	Project Location					Project Description ^{1,2}	Water Bodies Within or Adjacent to Project Limits ³	Dredge and Fill Activities (Y/N/NA) ⁴	Other Regional Water Board Permits Required ⁵	Impacts of Potential and Actual Project's Discharge ⁶	Disturbed Soil Area (acres)	Area of New Impervious Surface (acres)	Percentage of New Impervious Surface to Percentage of Existing Impervious Surface	Description of Construction Controls (SWPPP/WPCP/TBD) ⁷	Post-Construction Treatment Control Type, Quantity ⁸	Anticipated Project Delivery Schedule		Construction Period	
		Co.	Route	Begin PM	End PM	RB ⁹											PA&ED Date	PS&E Date	Start Date	End Date
79	03-1E330	El Dorado	50	79.8	80.4	6	DEVELOP PSR FOR MULTI-MODAL TRANSP & COMMUNITY EN	Lake Tahoe	Y	N/A	TBD	50	6	-	SWPPP	BS, 2/ID, 1/D,1/TST,1/MF,1	1-Aug-17	-	1-Jun-19	1-May-22
80	03-1F150	Sacramento	50	7.7	9.5	5	AUXILIARY LANES	TBD	NA	N/A	TBD	0	0	-	TBD	C	1-Jul-19	15-Oct-20	15-May-21	15-Dec-21
81	03-1F190	Sacramento	50	2.6	3.8	5	add auxiliary lane	Morrison Creek	N	N/A	TBD	2.3	0.12	-	SWPPP	C	3-May-17	1-Dec-18	1-Oct-19	1-Oct-20
82	03-1F230	D03-Various	80	2.4	11.3	5	widen ramps and install ramp meters	CRIPPLE CREEK/MAGPIE CREEK/ (NATOMAS WAST MAIN DRAINAGE CANAL (AKA STEELHEAD CREEK, UPSTREAM OF CONFLUENCE WITH ARCADE CREEK))/ (ARCADE CREEK)/ EAST DRAINAGE CANAL/ (SACRAMENTO RIVER (KNIGHTS LANDING TO THE DELTA))/ (DELTA WATERWAYS (NORTHWESTERN PORTION))	N	N/A	TBD	12.5	3	-	SWPPP	C	16-Jun-16	15-Jan-18	15-Jul-18	15-Jul-19
83	03-1F400	Placer	80	35.1	38.3	5	widening eastbound roadway	ROLLINS RESERVOIR	Y	N/A	TBD	27.8	7.2	-	SWPPP	C	22-Apr-14	18-Jun-15	24-May-16	1-Nov-18
84	03-1F520	El Dorado	89	8.2		6	Repair sand house	TBD	N	N/A	TBD	0	0	-	TBD	C	1-Nov-17	-	1-Jun-18	1-Dec-18
85	03-1F690	Nevada	VAR	0	0	6	rebuild crew room restrooms, and office	TBD	N	N/A	TBD	0	0	-	TBD	E	1-Jun-18	-	1-May-19	2-Jul-20
86	03-1G000	Yolo	113	0.1	11.1	5	Replace Joint Seals / Slab Replacement	TBD	NA	N/A	TBD	0	0	-	TBD	C	1-Aug-17	-	9-Jan-19	1-Oct-19
87	03-1G010	Yuba	20	1.9	3.5	5	0.20' Cold Plane and Pave RHMA-G	TBD	NA	N/A	TBD	0	0	-	TBD	C	15-Jul-17	-	9-Jan-19	1-Oct-19
88	03-1H000	El Dorado	193	6.5	11.1	5	Construct three turnouts for slower moving vehicle	TBD	NA	N/A	TBD	0	0	-	TBD	E	2-May-17	1-Oct-17	15-Jun-18	4-Dec-18
89	03-1H050	Sacramento	50	0.59	3.12	5	Pave slopes, roadside paving, relocate facilities,	TBD	NA	N/A	TBD	0	0	-	WPCP	E	1-Jul-19	1-Sep-20	1-May-21	1-Oct-21
90	03-1H090	El Dorado	50	2.24	3.46	5	Install MGS guardrail and remove trees	TBD	NA	N/A	TBD	0	0	-	TBD	E	1-Sep-17	1-Oct-17	1-May-18	2-Feb-19
91	03-1H100	Sacramento	VAR	0	0	5	Paint Steel Girders	TBD	NA	N/A	TBD	0	0	-	TBD	E	1-Jul-19	10-Jan-21	1-Sep-21	1-Dec-23
92	03-1H130	Sacramento	12	0	0.4	5	Replace Elevators, Paint Towers	TBD	NA	N/A	TBD	0	0	-	TBD	E	1-Jul-19	1-May-21	1-Feb-22	30-Mar-23
93	03-1H150	Sutter	99	39.4	40.9	5	Road Rehabilitation	(LIVE OAK SLOUGH)	Y	N/A	TBD	15.7	2.7	-	SWPPP	C	1-Sep-18	1-Jul-19	1-Mar-20	1-Oct-21
94	03-1H170	Sacramento	5	25.2	34.6	5	Remove and Replace RHMA	TBD	NA	N/A	TBD	0	0	-	WPCP	E	1-Nov-18	3-May-20	5-Feb-21	5-Oct-22
95	03-1H180	Nevada	80	13	15.5	6	Road Rehabilitation	TBD	NA	N/A	TBD	0	0	-	WPCP	C	1-Jun-19	1-Aug-20	1-Feb-21	1-Oct-21
96	03-1H240	Placer	49	2.22	2.35	5	Realign Roadway. Construct Retaining Wall	TBD	NA	N/A	TBD	0	0.28	-	TBD	C	15-Jan-18	15-Aug-19	15-May-20	1-Dec-20
97	03-1H380	Sacramento	99	32.5	33.5	5	Construct Aux Lanes	Pleasant Grove Hydrologic Sub-Area	Y	N/A	TBD	3.6	1.5	-	SWPPP	C	23-Feb-17	11-Jul-17	15-Apr-18	1-Dec-18
98	03-1H390	Butte	162	14.72	14.72	5	construct improved pedestrian crossing along the w	TBD	NA	N/A	TBD	0	0	-	TBD	C	7-Sep-16	-	15-Mar-18	15-Aug-18

Table 6-1: District 3 Anticipated Project Development and Construction Schedule

No.	EA	Project Location					Project Description ^{1,2}	Water Bodies Within or Adjacent to Project Limits ³	Dredge and Fill Activities (Y/N/NA) ⁴	Other Regional Water Board Permits Required ⁵	Impacts of Potential and Actual Project's Discharge ⁶	Disturbed Soil Area (acres)	Area of New Impervious Surface (acres)	Percentage of New Impervious Surface to Percentage of Existing Impervious Surface	Description of Construction Controls (SWPPP/WPCP/TBD) ⁷	Post-Construction Treatment Control Type, Quantity ⁸	Anticipated Project Delivery Schedule		Construction Period	
		Co.	Route	Begin PM	End PM	RB ⁹											PA&ED Date	PS&E Date	Start Date	End Date
99	03-1H440	El Dorado	50	6.464	6.464	5	Lower sidewalk to grade, build retaining wall and	TBD	NA	N/A	TBD	0	0	-	TBD	E	1-Dec-17	1-Sep-18	1-May-19	1-Dec-19
100	03-1H500	Yuba	20	1.23	1.32	5	Acquire Parking Lot	TBD	NA	N/A	TBD	0	0	-	TBD	E	24-May-18	-	5-Jun-19	9-Sep-19
101	03-1H590	Butte	99	36.31	36.31	5	Signalized Intersection	TBD	NA	N/A	TBD	0	0	-	TBD	C	5-Jul-18	1-Oct-19	1-Aug-20	1-Nov-21
102	03-1H600	El Dorado	193	24.2	24.3	5	Slope Stabilization	(SOUTH FORK AMERICAN RIVER (BELOW SLAB CREEK RESERVOIR TO FOLSOM LAKE))	N	N/A	TBD	0.1	-	-	WPCP	E	1-Jul-18	1-Feb-19	15-Sep-19	30-Oct-20
103	03-1H630	Sacramento	99	13.3	16	5	Construct Auxiliary Lanes	Morrison Creek	NA	N/A	TBD	1.52	0.31	-	SWPPP	C	1-Jun-18	1-May-19	1-Dec-19	1-Dec-21
104	03-1H790	Sacramento	51	7.83	7.83	5	place a new culvert from the DI on the corner of p	TBD	NA	N/A	TBD	0	0	-	TBD	C	1-Nov-17	-	1-May-18	1-Nov-18
105	03-1H820	D03-Various	50	0	0	TBD	Install new ITS systems and fiber optics network	TBD	NA	N/A	TBD	0	0	-	TBD	E	1-Apr-19	1-Aug-20	1-Apr-21	1-Dec-22
106	03-1H880	D03-Various	VAR	0	0	5	Place HSFT & OGAC at various locations	Various	NA	N/A	TBD	0	0	-	WPCP	E	24-May-17	1-Oct-17	5-Apr-18	5-Apr-19
107	03-2E540	El Dorado	50	4.8	5.3	5	upgrade interchange	TBD	N	N/A	TBD		0	-	TBD	C	15-Jul-16	1-Dec-18	1-Oct-19	1-Dec-21
108	03-2E560	El Dorado	50	6.3	7.3	5	upgrade interchange	City Storm Drain, Upper Deer Creek	N	N/A	TBD	80	30	-	SWPPP	C	1-Sep-13	1-Feb-15	1-Oct-16	1-Dec-18
109	03-2F160	Sacramento	160	25.1	31.9	5	Re-align route for Bay Delta Project	Delta Waterways	N	N/A	TBD	0	0	-	SWPPP	C	15-Oct-16	1-Feb-18	1-Oct-18	15-May-22
110	03-2F170	Sacramento	5	26.6	27	5	Sac City Drainage Repair	TBD	N	N/A	TBD	0	0	-	TBD	C	1-Nov-17	-	15-Mar-19	1-Mar-20
111	03-2F240	El Dorado	193	0	0	5	Construct 4 Turnouts	TBD	N	N/A	TBD	0.48	0	-	WPCP	E	15-Sep-17	1-Dec-17	1-Jun-18	1-Jan-19
112	03-2F320	Yuba	20	8	10.2	5	widen shoulders and rehab pavement	STAHL DITCH/ CORDUA CANAL/ (JACK SLOUGH)/ (LOWER YUBA RIVER)	Y	N/A	TBD	13.5	2.5	-	SWPPP	BS,18	13-Jun-16	15-Jan-18	2-Jan-19	15-Nov-19
113	03-2F340	Placer	49	3.1	7.5	5	Shoulder Widening	AUBURN RAVINE/ NORTH RAVINE/ DEADMAN CANYON/ ROCK CREEK/WISE CANAL/ DRY CREEK	Y	N/A	TBD	1.9	1.6	-	SWPPP	C	1-Mar-17	1-Feb-18	15-Nov-18	15-May-21
114	03-2F520	Butte	162	16	16.7	5	Traffic Signal Upgrades	LOWER FEATHER RIVER (LAKE OROVILLE DAM CONFLUENCE WITH SACRAMENTO RIVER)	N	N/A	TBD	0.2	-	-	WPCP	E	14-Dec-15	5-Dec-18	1-Dec-19	1-Dec-20
115	03-2F590	Yuba	20	20.1	21.6	5	SHOULDER WIDENING AND CURVE IMPROVEMENTS	(YUBA RIVER)	Y	N/A	TBD	22.9	3.7	-	SWPPP	C	29-Jan-16	1-Dec-17	15-Aug-18	1-Nov-20
116	03-2F800	Sacramento	12	0.3	6.1	5	rehabilitate pavement	TBD	N	N/A	TBD	0	0	-	TBD	C	1-Apr-16	1-Apr-16	1-Mar-18	1-Mar-19
117	03-2F960	Placer	80	5	6	5	Rocklin Rd. IC	TBD	N	N/A	TBD	0	0	-	TBD	C	1-Apr-16	-	2-Mar-19	2-Mar-21
118	03-2H000	Nevada	80	29.5	29.7	6	scale slope, construct rockfall drapery, flatten c	Truckee River	NA	N/A	TBD	2.8	0	-	SWPPP	E	2-Jan-19	15-Aug-20	15-Apr-21	1-Dec-21
119	03-2H080	Sacramento	12	0.75	0.75	5	Install CMS	TBD	NA	N/A	TBD	0	0	-	TBD	C	1-Nov-17	-	1-May-18	1-Nov-18
120	03-2H090	Nevada	49	6.3	6.7	5	Super elevation correction	TBD	NA	N/A	TBD	0	0	-	TBD	C	5-Apr-18	5-Oct-18	5-Apr-19	5-Oct-19
121	03-2H230	Sutter	99	40	40.5	5	Modify signals	Undefined	NA	N/A	TBD	2.6	0.8	-	SWPPP	C	1-Aug-17	1-Jul-19	1-Mar-20	1-Oct-21

Table 6-1: District 3 Anticipated Project Development and Construction Schedule

No.	EA	Project Location					Project Description ^{1,2}	Water Bodies Within or Adjacent to Project Limits ³	Dredge and Fill Activities (Y/N/NA) ⁴	Other Regional Water Board Permits Required ⁵	Impacts of Potential and Actual Project's Discharge ⁶	Disturbed Soil Area (acres)	Area of New Impervious Surface (acres)	Percentage of New Impervious Surface to Percentage of Existing Impervious Surface	Description of Construction Controls (SWPPP/WPCP/TBD) ⁷	Post-Construction Treatment Control Type, Quantity ⁸	Anticipated Project Delivery Schedule		Construction Period	
		Co.	Route	Begin PM	End PM	RB ⁹											PA&ED Date	PS&E Date	Start Date	End Date
122	03-2H460	Yolo	84	13.3	15.7	5	Roadway Rehab and Slope Stabilization	(DELTA WATERWAY (NORTHERN PORTION))/ (SACRAMENTO RIVER)/ (DELTA WATERWAYS (WESTERN PORTION))	Y	N/A	TBD	123	5.6	-	SWPPP	C	15-Aug-18	1-Nov-19	1-Sep-20	1-Nov-23
123	03-2H520	Colusa	20	6.42	6.42	5	Fix subgrade	TBD	NA	N/A	TBD	0	0	-	TBD	C	5-Aug-17	4-Aug-25	1-Mar-18	5-Oct-18
124	03-2H540	D03-Various	VAR	0	0	TBD	Legal Services	TBD	NA	N/A	TBD	0	0	-	TBD	C	28-Dec-16	-	1-Jul-18	10-Dec-29
125	03-2H550	D03-Various	VAR	0	0	TBD	Install ZEV charging stations at SRRAs in various	TBD	NA	N/A	TBD	0	0	-	TBD	C	1-Oct-17	1-Jan-18	15-Jul-18	1-Dec-18
126	03-2H560	Sierra	49	3.13	3.13	5	Repair Embankment, armor embankment with RSP, and	TBD	NA	N/A	TBD	0	0	-	TBD	C	25-Jan-17	-	16-Aug-18	16-Aug-18
127	03-2H570	D03-Various	VAR	0	0	TBD	Repair Loop Detectors	TBD	NA	N/A	TBD	0	0	-	TBD	C	1-Apr-18	1-Sep-18	5-May-19	1-Dec-20
128	03-2H620	Nevada	20	37.75	39.25	5	Realign roadway, improve curves and widen shoulder	NORTH FORK STEEPHOLLOW CREEK/ STEEPHOLLOW CREEK/ SOUTH YUBA CANAL	N	N/A	TBD	35	5.6	-	SWPPP	C	1-Aug-18	15-Aug-19	1-May-20	1-May-22
129	03-2H630	Butte	162	18.46	19.85	5	Construct Two Way Left Turn Lanes/Pockets, Widen S	Lower Feather River undefined HAS	Y	N/A	TBD	11.25	3.68	-	SWPPP	C	1-Dec-18	20-Jan-20	15-Sep-20	15-Sep-22
130	03-2H640	Sacramento	12	0.43	0.92	5	Construct dual left turn lanes WB Rt 12 to SB Rt 1	(DELTA WATERWAYS (NORTHERN PORTION))/ (DELTA WATERWAYS (WESTERN PORTION))/ TOMATO SLOUGH	N	N/A	TBD	2.5	1	-	SWPPP	C	1-Aug-18	15-Aug-19	15-Mar-20	1-Dec-20
131	03-2H650	D03-Various	VAR	0	0	TBD	Tree Removal- Gov Emerg Proclamation	TBD	NA	N/A	TBD	0	0	-	TBD	E	1-Dec-17	26-Feb-18	26-Jul-18	1-Jun-19
132	03-2H660	D03-Various	VAR	0	0	TBD	Tree Removal-Gov Emerg Proclamation	TBD	NA	N/A	TBD	0	0	-	TBD	E	1-Dec-17	26-Feb-18	26-Jul-18	1-Jun-19
133	03-2H670	Sierra	VAR	0	0	5	Tree Removal - Gov Emerg Proclamation	TBD	NA	N/A	TBD	0	0	-	TBD	E	1-Dec-17	26-Feb-18	26-Jul-18	1-Jun-19
134	03-2H680	El Dorado	VAR	0	0	TBD	Remove Trees- Gov Emerg Proclamation	TBD	NA	N/A	TBD	0	0	-	TBD	E	1-Dec-17	26-Feb-18	26-Jul-18	1-Jun-19
135	03-2H700	D03-Various	VAR	0	0	TBD	Repair damaged field elements including loops, rad	TBD	NA	N/A	TBD	0	0	-	TBD	C	1-Apr-18	1-Sep-18	5-May-19	1-Dec-20
136	03-2H710	Sierra	49	18.16	18.16	5	Blast and remove large diameter rocks, remove rock	TBD	NA	N/A	TBD	0	0	-	TBD	C	20-Dec-17	-	7-Mar-17	29-Aug-18
137	03-2H720	Nevada	80	9.2	9.6	5	Remove mudslide, repair/clean damaged drainage facility	TBD	NA	N/A	TBD	0	0	-	TBD	E	20-Dec-17	-	20-Mar-17	29-Aug-18
138	03-2H730	Nevada	49	20.79	20.99	5	Install drainage improvements and RSP	TBD	NA	N/A	TBD	0	0	-	TBD	C	20-Dec-17	-	15-Mar-17	29-Aug-18
139	03-2H740	Sacramento	80	0.4	0.4	5	Embankment Repair	TBD	NA	N/A	TBD	0	0	-	TBD	C	16-Feb-17	-	3-Apr-17	31-Aug-18

Table 6-1: District 3 Anticipated Project Development and Construction Schedule

No.	EA	Project Location					Project Description ^{1,2}	Water Bodies Within or Adjacent to Project Limits ³	Dredge and Fill Activities (Y/N/NA) ⁴	Other Regional Water Board Permits Required ⁵	Impacts of Potential and Actual Project's Discharge ⁶	Disturbed Soil Area (acres)	Area of New Impervious Surface (acres)	Percentage of New Impervious Surface to Percentage of Existing Impervious Surface	Description of Construction Controls (SWPPP/WPCP/TBD) ⁷	Post-Construction Treatment Control Type, Quantity ⁸	Anticipated Project Delivery Schedule		Construction Period	
		Co.	Route	Begin PM	End PM	RB ⁹											PA&ED Date	PS&E Date	Start Date	End Date
140	03-2H760	Placer	174	2.32	2.32	5	Reconstruct 100' of the eastbound lane and shoulder	TBD	NA	N/A	TBD	0	0	-	TBD	C	26-Dec-17	-	15-May-17	4-Sep-18
141	03-2H790	Sierra	49	2.5	2.5	5	Remove mudslide / debris and repair MBGR	TBD	NA	N/A	TBD	0	0	-	TBD	E	16-Feb-17	-	5-Apr-17	5-Sep-18
142	03-2H800	Sierra	49	20.48	27.14	5	Repair culverts, repair slope erosion, and install	TBD	NA	N/A	TBD	0	0	-	TBD	C	27-Dec-17	-	5-Apr-17	5-Sep-18
143	03-2H820	Nevada	49	0	0	5	Remove mudslides, repair/clean roadway, and repair	TBD	NA	N/A	TBD	0	0	-	TBD	E	27-Dec-17	-	5-Sep-18	5-Sep-18
144	03-2H830	Sierra	49	0	23.3	5	Remove mudslides, repair/clean roadway, and repair	TBD	NA	N/A	TBD	0	0	-	TBD	E	27-Dec-17	-	5-Sep-18	5-Sep-18
145	03-2H840	Yuba	70	10.15	10.15	5	Bring deficient fire system/security system up to	TBD	NA	N/A	TBD	0	0	-	TBD	C	5-Jan-18	-	13-Sep-18	13-Sep-18
146	03-2H850	Sacramento	5	16.9	22.8	5	Remove and replace PCC slabs	TBD	NA	N/A	TBD	0	0	-	TBD	C	5-Jan-18	-	13-Sep-18	13-Sep-18
147	03-2H860	Sacramento	160	4.54	9.24	5	Remove and replace approx. 2' of roadway structural	TBD	NA	N/A	TBD	0	0	-	TBD	C	5-Jan-18	-	13-Sep-18	13-Sep-18
148	03-2H880	Nevada	49	22.5	22.5	5	Install Soldier Pile Wall	TBD	NA	N/A	TBD	0	0	-	TBD	C	-	-	-	19-Sep-18
149	03-2H890	El Dorado	193	23.3	23.3	5	Install RSP on slope	TBD	NA	N/A	TBD	0	0	-	TBD	C	-	-	-	19-Sep-18
150	03-2H910	D03-Various	174	0	0	5	Remove slide material and hazard trees; rebuild sl	TBD	NA	N/A	TBD	0	0	-	TBD	E	22-Jan-18	-	27-Sep-18	27-Sep-18
151	03-2H940	D03-Various	89	0	0	5	Remove 211 dead and dying hazard trees on Route 89	TBD	NA	N/A	TBD	0	0	-	TBD	C	30-Jan-18	-	5-Oct-18	5-Oct-18
152	03-2H950	Yuba	49	6.73	6.73	5	Install Soldier Pile Wall or other retaining structure	TBD	NA	N/A	TBD	0	0	-	TBD	C	31-Jan-18	-	8-Oct-18	8-Oct-18
153	03-2H960	Nevada	49	22.7	22.7	5	Install soldier pile wall and reconstruct damaged	TBD	NA	N/A	TBD	0	0	-	TBD	C	31-Jan-18	-	8-Oct-18	8-Oct-18
154	03-2H980	Nevada	80	24.7	24.9	6	Cutback eroding slope and install underdrain system	TBD	NA	N/A	TBD	0	0	-	TBD	C	7-Feb-18	-	15-Oct-18	15-Oct-18
155	03-2H990	Sierra	49	45.19	45.19	5	Repair southbound land, traffic control, retaining	TBD	NA	N/A	TBD	0	0	-	TBD	C	7-Feb-18	-	15-Oct-18	15-Oct-18
156	03-37422	Yolo	5	6.4	6.8	5	I5-SR113 CONNECTOR	Tule Canal	N	N/A	TBD	6.4	4.1	-	SWPPP	C	6-Apr-00	1-Jan-19	1-Nov-27	1-Nov-30
157	03-3A402	Butte	99	33.9	35.3	5	Irrigation Restoration and General Maintenance	TBD	N	N/A	TBD	0	0	-	WPCP	E	1-Sep-17	1-Oct-18	1-Aug-19	1-Oct-20
158	03-3A760	Placer	89	7.5	9.4	6	operational improvements realignment, bike/ped imp	TRUCKEE RIVER	Y	N/A	TBD	23.7	1.4	-	SWPPP	C	22-Jun-16	1-Jun-16	3-Oct-16	1-Sep-18
159	03-3C001	Sacramento	5	9.7	22.5	5	Sac 5 Corridor Projects	Sacramento River/ Delta Water Ways	N	N/A	TBD	0	19.43	-	SWPPP	C	-	15-Jan-17	26-Jan-19	15-Dec-23

Table 6-1: District 3 Anticipated Project Development and Construction Schedule

No.	EA	Project Location					Project Description ^{1,2}	Water Bodies Within or Adjacent to Project Limits ³	Dredge and Fill Activities (Y/N/NA) ⁴	Other Regional Water Board Permits Required ⁵	Impacts of Potential and Actual Project's Discharge ⁶	Disturbed Soil Area (acres)	Area of New Impervious Surface (acres)	Percentage of New Impervious Surface to Percentage of Existing Impervious Surface	Description of Construction Controls (SWPPP/WPCP/TBD) ⁷	Post-Construction Treatment Control Type, Quantity ⁸	Anticipated Project Delivery Schedule		Construction Period	
		Co.	Route	Begin PM	End PM	RB ⁹											PA&ED Date	PS&E Date	Start Date	End Date
160	03-3C820	D03-Various	VAR	0	0	TBD	Install numbering signs	TBD	N	N/A	TBD	0	0	-	TBD	E	1-May-17	-	1-Mar-18	1-Feb-19
161	03-3E010	Yuba	70	13.5	16.1	5	new highway construction	TBD	N	N/A	TBD	-	0	-	TBD	E	1-Jul-19	1-Sep-21	15-Apr-22	1-Dec-25
162	03-3E050	Placer	80	28.5	31.5	5	Drainage Rehab	BRUSHY CREEK/ SWAN LAKE JR/ SLEEPY HOLLOW	N	N/A	TBD	-	-	-	WPCP	E	30-Jun-16	1-Sep-17	1-Mar-18	1-Oct-18
163	03-3F060	Glenn	162	76.3	78.6	5	seismic retrofit on two bridges	SACRAMENTO RIVER (RED BLUFF TO KNIGHTS LANDING)	Y	N/A	TBD	3.63	4.26	-	SWPPP	C	1-Aug-18	15-Jul-20	1-Apr-21	2-Jan-23
164	03-3F070	Sacramento	51	2.64	2.97	5	American River Bridge Widening	AMERICAN RIVER, LOWER	N	N/A	TBD	1.9	1.4	-	SWPPP	C	2-Jan-19	1-Jan-20	1-Dec-20	1-Oct-22
165	03-3F090	Sacramento	VAR	0	0	5	seismic retrofit on 4 bridges	TBD	N	N/A	TBD	0	0	-	TBD	C	30-Dec-16	1-Mar-18	1-Nov-18	1-Oct-21
166	03-3F140	D03-Various	5	0	0	TBD	Curb ramp upgrades at various locations.	TBD	N	N/A	TBD	0	0	-	TBD	E	1-Dec-17	1-May-18	3-Jan-19	1-Nov-19
167	03-3F230	Placer	80	4.5	5.9	5	Construct Eastbound Auxiliary Lane	TBD	N	N/A	TBD	19	4	-	SWPPP	C	14-Oct-16	1-Sep-18	1-Apr-19	15-Sep-20
168	03-3F250	Nevada	80	29.1	29.4	6	stabilize cut slope	Truckee River	N	N/A	TBD	1.3	0	-	SWPPP	E	1-Feb-18	1-Feb-19	30-Sep-19	30-Sep-20
169	03-3F280	Butte	70	8.8	11.8	5	BUT 70 four lane widening	Honcutt Creek, Feather River	Y	N/A	TBD	105.3	33	-	SWPPP	C	18-Jul-18	1-Dec-19	1-Jul-20	1-Dec-22
170	03-3F360	Sacramento	50	0.2	6.1	5	bus/carpool lane additions	TBD	N	N/A	TBD	0	0	-	TBD	E	31-May-17	1-Aug-18	7-May-19	1-Nov-21
171	03-3F480	Placer	80	41.4	42.2	5	Replace existing waste water distribution system	CANYON CREEK	N	N/A	TBD	8.8	-	-	SWPPP	E	21-Mar-16	21-Mar-17	20-Oct-17	1-Apr-19
172	03-3F500	Glenn	5	3.27	27.9	5	Gore Paving at 9 non-contiguous Rural Locations.	TBD	N	N/A	TBD	0	0.5	-	TBD	E	1-Jul-19	1-Jun-20	15-Feb-21	1-Dec-21
173	03-3F510	Yuba	20	18.19	20.23	5	Yuba 20 shoulder widening	(LOWER YUBA RIVER)/ FARM DITCH/ BIG RAVINE REEK/ SANFORD CREEK	Y	N/A	TBD	35	4.2	-	SWPPP	C	1-Sep-17	1-Apr-19	1-Nov-19	15-Oct-23
174	03-3F530	El Dorado	50	67.3	67.3	6	Bridge Widen or Replacement	(UPPER TRUCKEE RIVER, (BELOW CHRISTMAS VALLEY))	N	N/A	TBD	0.34	0.03	-	WPCP	E	29-Dec-16	15-Mar-18	1-Dec-18	1-Dec-20
175	03-3F540	Sacramento	VAR	0	0	5	Scour Mitigation	American River	N	N/A	TBD	0	0	-	TBD	C	1-Sep-17	1-May-18	1-Feb-19	1-Oct-21
176	03-3F560	Sutter	20	17	17	5	Bridge Scour Protection	TBD	N	N/A	TBD	0	0	-	TBD	C	2-Jan-18	-	1-Jul-19	1-Nov-20
177	03-3F620	El Dorado	89	25.15	25.3	6	Meeks Bay Bike Path	Lake Tahoe	N	N/A	TBD	3.24	0.84	-	SWPPP	C	15-Jan-17	-	1-Oct-17	1-Nov-18
178	03-3F750	Sacramento	51	1.4	2.6	5	Operational improvements - extend #4 lane NB from	AMERICAN RIVER, LOWER (NIMBUS DAM TO CONFLUENCE WITH SACRAMENTO RIVER)	N	N/A	TBD	3.98	1.23	-	SWPPP	C	1-Jun-18	1-Nov-19	31-Oct-20	1-Nov-22
179	03-3F760	Butte	191	6.8	8.6	5	Realign curves, widen shoulders	CLEAR CREEK	Y	N/A	TBD	28.8	-1.2	-	SWPPP	C	18-May-15	2-Aug-16	27-Feb-17	2-Jan-19
180	03-3F800	Yuba	20	18.48	18.48	5	Yuba Cut Bank	TBD	N	N/A	TBD	0	0	-	TBD	C	1-Apr-18	-	15-Feb-19	1-Jul-19
181	03-3F870	Placer	49	7.16	7.16	5	Pla 49, @ Shale Ridge Rd, Install Traffic Signal	TBD	N	N/A	TBD	0	0	-	TBD	E	3-Aug-16	1-Sep-16	-	1-May-17
182	03-3F880	Placer	49	2.25	2.3	5	Relocate wall	TBD	N	N/A	TBD	0	0	-	TBD	C	1-Jun-16	-	1-May-17	1-Oct-18

Table 6-1: District 3 Anticipated Project Development and Construction Schedule

No.	EA	Project Location					Project Description ^{1,2}	Water Bodies Within or Adjacent to Project Limits ³	Dredge and Fill Activities (Y/N/NA) ⁴	Other Regional Water Board Permits Required ⁵	Impacts of Potential and Actual Project's Discharge ⁶	Disturbed Soil Area (acres)	Area of New Impervious Surface (acres)	Percentage of New Impervious Surface to Percentage of Existing Impervious Surface	Description of Construction Controls (SWPPP/WPCP/TBD) ⁷	Post-Construction Treatment Control Type, Quantity ⁸	Anticipated Project Delivery Schedule		Construction Period	
		Co.	Route	Begin PM	End PM	RB ⁹											PA&ED Date	PS&E Date	Start Date	End Date
183	03-3F990	Sutter	99	39.2	41.4	5	Live Oak Street Scape	RECLAMATION DISTRICT 777, EAST INTERCEPTOR CANAL, WADSWORTH CANAL, SUTTER BYPASS, SACRAMENTO RIVER	Y	N/A	TBD	15.8	1.8	-	SWPPP	C	1-Aug-17	1-Jul-19	28-Feb-20	1-Oct-21
184	03-3H000	Butte	70	35.7	48	5	Remove slides, repair roadway, replace MBGR	TBD	NA	N/A	TBD	0	0	-	TBD	E	7-Feb-18	-	15-Oct-18	15-Oct-18
185	03-3H010	Placer	80	47.3	47.3	5	Remove slide, cutback slope, install underdrain system	TBD	NA	N/A	TBD	0	0	-	TBD	E	7-Feb-18	-	15-Oct-18	15-Oct-18
186	03-3H020	El Dorado	50	36.6	38.51	5	Remove slide, cutback slope, install underdrain system	TBD	NA	N/A	TBD	0	0	-	TBD	E	7-Feb-18	-	15-Oct-18	15-Oct-18
187	03-3H030	Sierra	49	2.41	2.61	5	Install 3 soldier pile walls	TBD	NA	N/A	TBD	0	0	-	TBD	C	7-Feb-18	-	15-Oct-18	15-Oct-18
188	03-3H040	D03-Various	80	0	0	TBD	Remove slide, repair, clean drainage system, repair	TBD	NA	N/A	TBD	0	0	-	TBD	E	7-Feb-18	-	15-Oct-18	15-Oct-18
189	03-3H050	Nevada	80	12.5	21.2	5		TBD	NA	N/A	TBD	0	0	-	TBD	C	7-Feb-18	-	2-Mar-17	15-Oct-18
190	03-3H060	El Dorado	193	24.4	26.4	5	Install Soldier Pile Wall	TBD	NA	N/A	TBD	0	0	-	TBD	C	8-Feb-18	-	16-Oct-18	16-Oct-18
191	03-3H070	El Dorado	193	19.8	26.95	5	Remove mudslides, repair/clean roadway, repair/clean	TBD	NA	N/A	TBD	0	0	-	TBD	E	9-Feb-18	-	17-Oct-18	17-Oct-18
192	03-3H080	Sacramento	220	2.5	3.1	5	Clear and Grub embankment, place RSP Method A	TBD	NA	N/A	TBD	0	0	-	TBD	C	9-Feb-18	-	17-Oct-18	17-Oct-18
193	03-3H100	El Dorado	50	37.6	37.6	5	Install soldier Pile wall approximately 600' in length	TBD	NA	N/A	TBD	0	0	-	TBD	C	20-Feb-18	-	25-Oct-18	25-Oct-18
194	03-3H110	El Dorado	50	37.6	37.6	5	Interim repair and stabilization of the eastbound	TBD	NA	N/A	TBD	0	0	-	TBD	C	20-Feb-18	-	25-Oct-18	25-Oct-18
195	03-3H120	El Dorado	50	43.69	50	5	Remove slides, cut back slope, repair damaged road	TBD	NA	N/A	TBD	0	0	-	TBD	E	20-Feb-18	-	25-Oct-18	25-Oct-18
196	03-3H130	El Dorado	193	26.4	26.4	5	Install Soldier Pile Wall	TBD	NA	N/A	TBD	0	0	-	TBD	C	2-Feb-18	-	10-Oct-18	10-Oct-18
197	03-3H150	Yolo	16	1.5	1.7	5	Install Soldier Pile Wall approximately 1.2 miles	TBD	NA	N/A	TBD	0	0	-	TBD	C	20-Feb-18	-	25-Oct-18	25-Oct-18
198	03-3H160	Colusa	20	5.1	12.51	5	Repair roadway shoulders, replace/repair culverts	TBD	NA	N/A	TBD	0	0	-	TBD	C	20-Feb-18	-	25-Oct-18	25-Oct-18
199	03-3H170	Butte	70	46	47	5	Repair embankment with RSP, replace damaged pavement	TBD	NA	N/A	TBD	0	0	-	TBD	C	20-Feb-18	-	25-Oct-18	25-Oct-18
200	03-3H180	El Dorado	50	21.59	34.1	5	Remove trees and loose material, replace damaged p	TBD	NA	N/A	TBD	0	0	-	TBD	E	20-Feb-18	-	25-Oct-18	25-Oct-18
201	03-3H190	Yolo	16	0	5.5	5	Remove mudslides, repair/clean roadway, and repair	TBD	NA	N/A	TBD	0	0	-	TBD	E	20-Feb-18	-	25-Oct-18	25-Oct-18

Table 6-1: District 3 Anticipated Project Development and Construction Schedule

No.	EA	Project Location					Project Description ^{1,2}	Water Bodies Within or Adjacent to Project Limits ³	Dredge and Fill Activities (Y/N/NA) ⁴	Other Regional Water Board Permits Required ⁵	Impacts of Potential and Actual Project's Discharge ⁶	Disturbed Soil Area (acres)	Area of New Impervious Surface (acres)	Percentage of New Impervious Surface to Percentage of Existing Impervious Surface	Description of Construction Controls (SWPPP/WPCP/TBD) ⁷	Post-Construction Treatment Control Type, Quantity ⁸	Anticipated Project Delivery Schedule		Construction Period	
		Co.	Route	Begin PM	End PM	RB ⁹											PA&ED Date	PS&E Date	Start Date	End Date
202	03-3H200	D03-Various	89	0	0	TBD	Replace AC Surfacing, Traffic Control and Temporary	TBD	NA	N/A	TBD	0	0	-	TBD	E	23-Feb-18	-	30-Oct-18	30-Oct-18
203	03-3H220	Sierra	VAR	0	0	5	Repair culverts and ditches, remove and replace he	TBD	NA	N/A	TBD	0	0	-	TBD	C	23-Feb-18	-	30-Oct-18	30-Oct-18
204	03-3H230	El Dorado	50	33.9	36.2	5	Cold plane HMA-A paving and geotechnical exploration	TBD	NA	N/A	TBD	0	0	-	TBD	C	23-Feb-18	-	-	30-Oct-18
205	03-3H240	El Dorado	50	48.8	49	5	place new culvert pipe and drainage inlets	TBD	NA	N/A	TBD	0	0	-	TBD	C	-	-	27-Nov-18	27-Nov-18
206	03-3H250	Sutter	20	17	17	5	RSP Piers, reconstruct damaged R/W fence, remove d	TBD	NA	N/A	TBD	0	0	-	TBD	C	20-Mar-18	-	27-Nov-18	27-Nov-18
207	03-3H260	D03-Various	VAR	0	0	TBD	Replace shoulder backing	TBD	NA	N/A	TBD	0	0	-	TBD	C	6-Apr-18	-	14-Dec-18	14-Dec-18
208	03-42550	Sacramento	99	29.5	32.7	5	CONSTRUCT INTERCHANGE	RD 1000 Canal	N	N/A	TBD	94	7.7	-	SWPPP	BS, 20	20-Dec-10	1-Feb-19		1-Oct-21
209	03-4C330	D03-Various	VAR	0	0	TBD	Bus-80 and SR 50, Install Interchange Exist Number	TBD	N	N/A	TBD	0	0	-	TBD	C	1-Sep-17	-	1-May-18	1-Jul-19
210	03-4E520	D03-Various	VAR	0	0	TBD	Install Pony Express Auto Tour Route Highway Signs	TBD	N	N/A	TBD	0	0	-	TBD	E	-	-	1-Dec-16	1-Dec-18
211	03-4E620	El Dorado	50	22	24.3	5	various safety improvements	Weber Creek	Y	N/A	TBD	26	8.3	-	SWPPP	BS,2/D,1	2-Feb-18	1-Jul-18	1-Jun-19	1-Dec-21
212	03-4E980	Butte	162	17.05	17.05	5	Oroville manholes	TBD	N	N/A	TBD	0	0	-	TBD	E	1-Nov-17	-	1-May-18	1-Nov-18
213	03-4F060	Glenn	5	0	20	5	HMA Overlay	LOGAN CREEK/ GLENN-COLUSA CANAL/ WILLOW CRREK/ WILSON CREEK/ WALKER CREEK	N	N/A	TBD		0.0006	-	WPCP	E	24-Jun-15	15-Feb-16	28-Oct-16	1-Dec-18
214	03-4F100	Sacramento	VAR	0	0	5	Seismic retrofit	TBD	N	N/A	TBD	0	0	-	TBD	C	1-Apr-18	1-Aug-19	1-Jun-20	1-Feb-22
215	03-4F101	Sacramento	VAR	0	0	5	Seismic retrofit two bridges	TBD	NA	N/A	TBD	0	0	-	TBD	C	1-Apr-18	1-Aug-19	1-Jun-20	1-Feb-22
216	03-4F110	D03-Various	162	43.5	84.2	5	Railing Upgrade for 19 Bridges	Var	N	N/A	TBD	0	0	-	TBD	E	1-Sep-18	15-Jul-19	1-Apr-20	1-Nov-22
217	03-4F170	Yolo	16	25.2	28.3	5	Esparto Ped Impv	TBD	N	N/A	TBD	0	0	-	TBD	E	1-Dec-17	15-Oct-18	1-Jun-19	1-Nov-19
218	03-4F250	Placer	80	25.9	28.5	5	Culvert Rehab	TBD	N	N/A	TBD	0	0	-	TBD	E	2-Oct-17	15-Nov-18	5-Sep-19	15-Nov-20
219	03-4F260	Butte	32	9.1	9.2	5	Ivy Street Signals	LITTLE CHICO CREEK	N	N/A	TBD	0.32	0.06	-	WPCP	E	7-Apr-15	16-Sep-16	27-Feb-17	30-Oct-18
220	03-4F320	Sacramento	99	11.6	11.6	5	New Interchange at Whitelock Parkway and SR 99 pro	TBD	N	N/A	TBD	0	0	-	TBD	E	20-Sep-18	-	1-May-21	15-Jan-23
221	03-4F350	Placer	49	3.1	7.5	5	Auburn CAPM	TBD	N	N/A	TBD	0	0	-	TBD	C	1-Sep-17	1-Mar-19	1-Mar-20	1-Nov-21
222	03-4F370	Nevada	174	2.74	4.63	5	Shoulder Widening and Curve Improvements	ROLLINS RESERVOIR, Lake Combie	N	N/A	TBD	15.5	3.53	-	SWPPP	C	2-Sep-16	1-Dec-18	1-Jul-19	1-Oct-20
223	03-4F380	Yuba	70	16.2	25.8	5	widen shoulders, improve clear recovery zone	(FEATHER RIVER LEVEES0/ JACK SLOUGH	Y	N/A	TBD	169	21	-	SWPPP	C	1-Dec-17	1-Jul-19	1-Jun-20	1-Dec-22

Table 6-1: District 3 Anticipated Project Development and Construction Schedule

No.	EA	Project Location					Project Description ^{1,2}	Water Bodies Within or Adjacent to Project Limits ³	Dredge and Fill Activities (Y/N/NA) ⁴	Other Regional Water Board Permits Required ⁵	Impacts of Potential and Actual Project's Discharge ⁶	Disturbed Soil Area (acres)	Area of New Impervious Surface (acres)	Percentage of New Impervious Surface to Percentage of Existing Impervious Surface	Description of Construction Controls (SWPPP/WPCP/TBD) ⁷	Post-Construction Treatment Control Type, Quantity ⁸	Anticipated Project Delivery Schedule		Construction Period	
		Co.	Route	Begin PM	End PM	RB ⁹											PA&ED Date	PS&E Date	Start Date	End Date
224	03-4F400	Sacramento	5	33.1	33.1	5	Weigh-in motion repairs and concrete pavement repl	TBD	N	N/A	TBD	0	0	-	TBD	C	15-Aug-17	15-Mar-18	15-Sep-18	15-Feb-20
225	03-4F420	Glenn	5	14.6	14.6	5	Upgrade water and sewage system to comply with wat	TBD	N	N/A	TBD	0	0	-	TBD	E	1-Oct-18	15-Jun-19	15-Feb-20	1-Oct-21
226	03-4F430	Colusa	5	24.3	24.3	5	Rehab water and sewage system.	TBD	N	N/A	TBD	0	0	-	TBD	E	1-Feb-18	1-Dec-18	1-Jun-19	1-Oct-21
227	03-4F450	Sacramento	5	9.7	22.7	5	Installation of fiber optic cable	Sacramento - San Joaquin River Delta Estuary	N	N/A	TBD	0	0	-	WPCP	E	23-Jun-16	15-Jan-17	26-Jan-19	15-Dec-23
228	03-4F460	Sacramento	50	0	5.1	5	Installation of fiber optics communication lines	(DELTA WATERWAYS (NORTHERN PORTION))/ (LOWER AMERICAN RIVER (NIMBUS DAM TO CONFLUENCE WITH SACRAMENTO RIVER))	N	N/A	TBD	3.9		-	WPCP	E	30-Jun-16	15-Dec-17	15-Jul-18	1-May-19
229	03-4F580	Sacramento	5	33.7	33.7	5	SRRA Upgrade Potable Wtr and Sewage	TBD	N	N/A	TBD	0	0	-	TBD	E	9-Sep-17	8-Aug-18	15-Apr-19	15-Aug-20
230	03-4F600	Nevada	80	0	20	6-May	Remove MBGR and replace with concrete barrier	Truckee River	N	N/A	TBD	0	0	-	TBD	E	1-Aug-17	1-Oct-18	1-Apr-19	1-Nov-19
231	03-4F610	Sacramento	VAR	0	0	5	Upgrade MBGR, add concrete barrier	TBD	N	N/A	TBD	0	0	-	TBD	E	17-May-17	2-Jan-18	15-May-18	1-May-19
232	03-4F620	Nevada	80	0	10	CV/LA	Remove MBGR and replace with concrete barrier	TBD	N	N/A	TBD	0	0	-	TBD	E	1-Aug-17	1-Sep-18	15-Mar-19	15-Feb-20
233	03-4F630	D03-Various	VAR	0	0	TBD	Upgrade MBGR to current standards	ND	N	N/A	TBD	0	0	-	WPCP	E	1-Aug-17	1-Jul-18	1-Mar-19	1-Dec-19
234	03-4F640	D03-Various	VAR	0	0	5	Upgrade MBGR, add concrete barrier	TBD	N	N/A	TBD	0	0	-	WPCP	E	1-Jun-17	1-Aug-18	1-May-19	1-Nov-19
235	03-4F650	Yolo	VAR	0	0	5	Pavement Rehab	DELTA WATERWAYS (NORTHWESTERN PORTION), SACRAMENTO RIVER (KNIGHTS LANDING TO THE DELTA)	N	N/A	TBD	15	2	-	SWPPP	C	1-Jun-17	1-Sep-18	1-May-19	1-Nov-20
236	03-4F680	Yuba	70	13.6	14.1	5	Install bicycle railing and upgrade pedestrian ram	TBD	N	N/A	TBD	0	0	-	TBD	E	1-Sep-18	15-Oct-18	1-May-19	1-Oct-19
237	03-4F690	Yuba	70	8	8.2	5	remove and replace concrete ditch lining	TBD	N	N/A	TBD	0	0	-	TBD	E	1-Oct-17	1-Feb-18	30-Jul-18	1-Aug-19
238	03-4F730	D03-Various	VAR	0	0	5	Install ramp meters on I5, 99, 65, and I-80	DELTA WATERWAYS (NORTHERN PORTION), AMERICAN RIVER, LOWER (NIMBUS DAM TO CONFLUENCE WITH SACRAMENTO RIVER), PLEASANT GROVE CREEK, SOUTH BRANCH, SECRET RAVINE, PUTAH CREEK	N	N/A	TBD	9.7	4.1	-	SWPPP	C	12-Nov-17	19-Feb-19	2-Nov-19	1-Dec-21

Table 6-1: District 3 Anticipated Project Development and Construction Schedule

No.	EA	Project Location					Project Description ^{1,2}	Water Bodies Within or Adjacent to Project Limits ³	Dredge and Fill Activities (Y/N/NA) ⁴	Other Regional Water Board Permits Required ⁵	Impacts of Potential and Actual Project's Discharge ⁶	Disturbed Soil Area (acres)	Area of New Impervious Surface (acres)	Percentage of New Impervious Surface to Percentage of Existing Impervious Surface	Description of Construction Controls (SWPPP/WPCP/TBD) ⁷	Post-Construction Treatment Control Type, Quantity ⁸	Anticipated Project Delivery Schedule		Construction Period	
		Co.	Route	Begin PM	End PM	RB ⁹											PA&ED Date	PS&E Date	Start Date	End Date
239	03-4F740	Nevada	49	23.2	32.6	5	HMA Overlay	ND	N	N/A	TBD	-	-	-	WPCP	E	15-Mar-16	26-Aug-16	6-Apr-17	1-Oct-18
240	03-4F800	Butte	32	8.8	9.54	5	upgrade/Install ADA infrastructure	TBD	N	N/A	TBD	0	0	-	TBD	E	2-Oct-17	1-Jul-18	1-Apr-19	15-Nov-20
241	03-4F810	Glenn	32	0	0.8	5	Upgrade/Install ADA infrastructure	TBD	N	N/A	TBD	0	0	-	TBD	E	1-Apr-18	1-Aug-19	1-Apr-20	1-Dec-20
242	03-4F830	Yolo	5	0.4	28.9	5	Gore paving and slope stabilization under bridges	TBD	N	N/A	TBD	0	0	-	-	E	2-Oct-17	1-Aug-18	15-May-19	1-Nov-19
243	03-4M880	Nevada	80	14.8	16.4	TBD	Replace Damaged Fence 03-NEV-080 WB	TBD	N	N/A	TBD	0	0	-	TBD	E	1-Jul-16	-	1-Jun-17	1-Nov-18
244	03-4M930	Sacramento	5	1	1	5	NO NICK	TBD	N	N/A	TBD	0	0	-	TBD	E	1-Jul-16	-	1-Jun-17	1-Nov-18

Treatment Control Status Legend	
BMP Device Types:	
BIOSTP	Biofiltration Strips
BIOSWL	Biofiltration Swales
C	Under Consideration
CNTBOX	Gross Solids Removal Devices (Inclined Screen)
DETBAS	Detention Basins
DPPIA	Design Pollution Prevention Infiltration Area*
DWFD	Dry Weather Flow Diversion
E	Exempt
INDBAS	Infiltration Basins*
INDTRE	Infiltration Trench*
LNGTBE	Gross Solids Removal Devices (Linear Radial)
MCTT	Multi-Chambered Treatment Trains
MF-ADS	Austin Sand Filters
MF-DSF	Delaware Sand Filters
Other	Other (specify type)
SA	Stabilization Areas
TRCSND	Traction Sand Traps
WETBAS	Wet Basins

* Water quality volume infiltrates within the right of way. (When this is demonstrated for at least 90% of the WQV, other types of treatment BMPs are not considered unless there is a location-specific requirement.)

Table 6-2 lists the planned maintenance projects that will disturb soil.

Table 6-2: District 3 Anticipated Significant Road Maintenance Activities

No.	Co.	Route	Beg PM	End PM	Regional Board	Description	Water Bodies Affected ¹⁰	Other Regional Water Board Permits Required ¹¹	Potential and Actual Impacts of Project's Discharge ¹²	Disturbed Soil Area (acres)	Area of New Impervious Surface (acres)	Percentage of New Impervious Surface to Existing Impervious Surface	Description of Construction Controls (SWPPP/WPCP/TBD/NA) ¹³	Post-Construction Treatment Control Type, Quantity ¹⁴	Start Date	Completion Date
The Maintenance Stormwater Coordinator does not anticipate any maintenance activities that fall outside the realm of routine maintenance.																

The Maintenance Stormwater Coordinator does not anticipate any significant maintenance activities except for routine maintenance.

Treatment Control Status Legend	
BMP Device Types:	
BIOSTP	Biofiltration Strips
BIOSWL	Biofiltration Swales
C	Under Consideration
CNTBOX	Gross Solids Removal Devices (Inclined Screen)
DETBAS	Detention Basins
DPPIA	Design Pollution Prevention Infiltration Area*
DWFD	Dry Weather Flow Diversion
E	Exempt
INDBAS	Infiltration Basins*
INDTRE	Infiltration Trench*
LNGTBE	Gross Solids Removal Devices (Linear Radial)
MCTT	Multi-Chambered Treatment Trains
MF-ADS	Austin Sand Filters
MF-DSF	Delaware Sand Filters
Other	Other (specify type)
SA	Stabilization Areas
TRCSND	Traction Sand Traps
WETBAS	Wet Basins

* Water quality volume infiltrates within the right of way. (When this is demonstrated for at least 90% of the WQV, other types of treatment BMPs are not considered unless there is a location-specific requirement.)

¹⁰ Receiving waters within or adjacent to maintenance activity designated as “303(d) (constituent type).” Activity adjacent to Drinking Water Reservoir or Ground Water Recharge Facilities designated as “DW.”

¹¹ Regional Water Board Permits required other than Construction General Permit, such as Clean Water Act Section 401 water quality certification, Waiver of Discharge Requirements, Dewatering Permits, Bridge Painting WDRs, etc.

¹² This information may come from the Water Quality Assessment Report prepared for each project, a Water Quality Technical Memorandum, or other document that evaluates the water quality impacts of a project.

¹³ A description of the Construction Controls is available in the project’s Storm Water Pollution Prevention Plan (SWPPP), Water Pollution Control Plan (WPCP), is To Be Determined (TBD) if the Disturbed Soil Area is unavailable, or is Not Applicable (NA) because there is no Disturbed Soil Area associated with the project.

¹⁴ Treatment Control Status identified by: device type/number of devices, exempt (“E”), or under consideration (“C”). See Treatment Control Status Legend below for device type abbreviations.

Table 6-3 lists the District's planned monitoring activities.

Table 6-3: District 3 Monitoring Activities

Statewide Monitoring Program Activities
<p>The District plans to:</p> <ul style="list-style-type: none">• Conduct monitoring activities for compliance with the Lake Tahoe TMDL as part of the implementation of the Lake Clarity Crediting Program. This includes field data collection, analysis reporting activities, and the application of various associated modeling and registration tools.• Conduct studies to evaluate the effectiveness of BMPs in the Lake Tahoe Basin by monitoring retrofitted sand vaults.

This page was intentionally left blank.

7 Region-Specific Activities

Section 7 of the DWP identifies the applicable region-specific activities that District 3 has planned for fiscal year 2019-20 to comply with Attachment V of the Conformed NPDES Permit.

Lahontan Region

Natural Environment as Treatment (NEAT) Treatment Control Design

It is the intent that the Natural Environment as Treatment (NEAT) Report will serve as the basis for Lahontan Regional Board and Caltrans District 3 to develop a consensus-based approach for the prioritization and selection of water quality improvements for state highways within the Lake Tahoe and Truckee River Hydrologic Units.

The NEAT Report includes a summary of design recommendations for existing and future water quality improvement projects located within the Lake Tahoe and Truckee River Hydrologic Units; and step-by-step processes for Caltrans and Regional Board staff to utilize during project scoping, approval, and design. Water quality treatment recommendations, provided herein, are consistent with the current Project Planning and Design Guide (PPDG), as well as the Regional Board's region-specific requirements in the Caltrans NPDES Permit. In addition, the established NEAT process is not intended to replace existing Caltrans project development procedures and processes but is intended to supplement them.

Vegetation Removal or Existing Ground Surface Disturbance Prohibition

District 3 will comply with the vegetation removal or existing ground surface disturbance prohibition requirements within the Lahontan Region as described in the Conformed NPDES Permit.

Project Review Requirements

District 3 will comply with the project review requirements within the Lahontan Region as described in the Conformed NPDES Permit.

This page was intentionally left blank.

8 DWP Noncompliance and Improvements

Section 8 of the DWP identifies the deviations that occurred from the prior DWP that resulted or will result in noncompliance with the Conformed NPDES Permit or SWMP. In addition, it describes the improvements that were performed in response to the incidents of noncompliance. No DWP noncompliance incidents or improvements were identified for District 3.

This page was intentionally left blank.