

California Department of Transportation Stormwater Management Program District 4 Work Plan

Fiscal Year

2019-2020

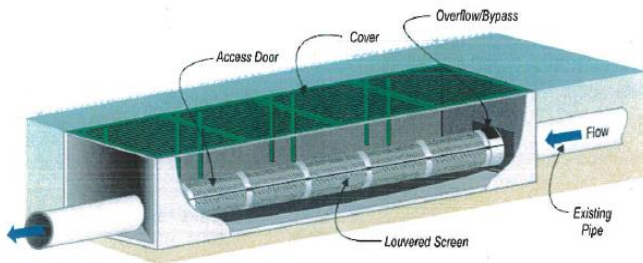
CTSW-RT-18-379.06.2



California Department of Transportation
Division of Environmental Analysis
Stormwater Management Program
111 Grand Ave, Oakland, California 94612

<http://www.dot.ca.gov/hq/env/stormwater>

October 1, 2018



For individuals with sensory disabilities, this document is available in alternate formats upon request. Please call or write to the Stormwater Liaison, Caltrans Division of Environmental Analysis, MS-27, P.O. Box 942874, Sacramento, CA 94274-0001, (916) 653-8896 Voice, or dial 711 to use a relay service.

**California Department of Transportation
District 4 Certification
District Work Plan 2019-20**

I certify under penalty of law that this document and all attachments were prepared under my direction or supervision in accordance with a system designed to assure that qualified personnel properly gather and evaluate the information submitted. Based on my inquiry of the person or persons who manage the system, or those persons directly responsible for gathering the information, the information submitted is to the best of my knowledge and belief, true, accurate, and complete. I am aware that there are significant penalties for submitting false information, including the possibility of fine and imprisonment of knowing violations. [40 CFR 122.22(d)]



Tony F. Tavares, District Director

9/25/18

Date

District 4

This page was intentionally left blank.

Table of Contents

1	Introduction	1-1
2	District Personnel and Responsibilities	2-1
3	District Facilities and Water Bodies	3-1
4	Drinking Water Reservoirs and Recharge Facilities.....	4-1
5	Slopes Prone to Erosion	5-1
6	Implementation.....	6-1
7	Region-Specific Activities	7-1
8	DWP Noncompliance and Improvements	8-1

Figures

Figure 2-1: District 4 Organizational Chart	2-11
Figure 5-1: District 4 2018 Areas Prone to Erosion.....	5-3

Tables

Table 2-1: District 4 Stormwater Personnel and Responsibilities	2-8
Table 2-2: District 4 Signatory Authority for Key Documents.....	2-10
Table 4-1: District 4 Drinking Water Reservoirs and Recharge Facilities	4-1
Table 5-1: District 4 Inventory of Road Segments Prone to Erosion.....	5-1
Table 6-1: District 4 Anticipated Project Development and Construction Schedule.....	6-3
Table 6-2: District 4 Anticipated Significant Road Maintenance Activities	6-16
Table 6-3: District 4 Monitoring Activities	6-19

This page was intentionally left blank.

General Information about the District Work Plan

The District Work Plans (DWPs) describe the organization of each California Department of Transportation (Caltrans) District's stormwater program and outline the planned stormwater activities for the upcoming fiscal year. They are prepared and submitted on October 1 each year. Since the DWP is District-specific, each Regional Water Quality Control Board (RWQCB or Regional Board) is provided a copy of the DWPs relevant to their jurisdiction.

This DWP presents information about District 4's water bodies, Best Management Practices (BMPs), and monitoring programs. It describes how the District will specifically implement the requirements of the Statewide Stormwater Management Plan (SWMP) during fiscal year 2019-20. Implementation activities will be conducted in accordance with the procedures presented in the SWMP. In addition, this DWP fulfills Provision E.3.b of the *National Pollutant Discharge Elimination System (NPDES) Statewide Storm Water Permit Waste Discharge Requirements (WDRs) for State of California Department of Transportation* (Order Number 2012-0011-DWQ, NPDES Number CAS000003, Effective July 1, 2013) (NPDES Permit). The NPDES Permit was amended by Orders WQ 2014-0006-EXEC (January 17, 2014), WQ 2014-0077-DWQ (May 20, 2014), and WQ 2015-0036-EXEC (April 7, 2015). A conformed NPDES Permit was issued on April 7, 2015 (Conformed NPDES Permit), available on the California State Water Resources Control Board's (SWRCB) website:

http://www.waterboards.ca.gov/board_decisions/adopted_orders/water_quality/2012/wq2012_0011_dwq_conformed_signed.pdf

The NPDES Permit was further amended by Order WQ 2017-0026-EXEC on November 27, 2017. This permit amendment describes the primary modifications to several Areas of Special Biological Significance (ASBS) sampling locations and incorporation of compliance units crediting due to the State Water Resources Control Board's (SWRCB) adoption of the trash provisions on April 7, 2015 (effective on December 3, 2015).

The DWP's eight sections describe how the District plans to implement the stormwater program during the upcoming fiscal year. Section 1 introduces the DWP, describes its organizational structure, and identifies the key goals and commitments made by the District for the upcoming fiscal year. Section 2 describes the personnel with stormwater operations responsibilities in the District. In Section 3, the District's facilities are listed and categorized by type and location. Section 4 describes and identifies the high-risk locations where spills from the District's owned rights-of-way, roadways or facilities can discharge directly to a drinking water reservoir or ground water recharge facility. In Section 5, the District's road segments that are prone to erosion are identified. Section 6 summarizes the District's implementation activities, including projects that will be in the design and construction phases during the fiscal year, maintenance projects, and planned stormwater monitoring activities. Section 7 identifies the planned region-specific activities (if applicable) to address the requirements listed in Attachment V of the Conformed NPDES Permit. Section 8 identifies deviations that occurred from the prior DWP that resulted or will result in noncompliance with the Conformed NPDES Permit or SWMP and describes improvements performed in response to the incidents of noncompliance.

District Goals and Commitments

The current goals for District 4 include:

- developing and implementing sustainable BMPs that provide a maximum water quality benefit with minimal life-cycle costs, while providing a safe transportation system for our users and workers;

- working with local partners to develop alternative compliance/watershed-based solutions that are cost-effective; and
- implementing public outreach efforts.

The District plans to accomplish this by continuing to:

- train staff on the Conformed NPDES Permit provisions related to new development and redevelopment requirements that require stormwater treatment, hydromodification control measures, and incorporating full trash capture measures to comply with the San Francisco Bay Region's trash reduction requirements;
- coordinate with local partners to provide guidance in the planning and design phase to ensure compliance with NPDES permit provisions
- facilitate discussions with the Regional Board(s) on alternative compliance/off-site watershed based solutions to provide equivalent water quality benefit;
- train staff on the use of the updated Caltrans Stormwater Project Planning and Design Guide;
- train staff on compliance requirements in the Construction General Permit (CGP);
- engage in discussions with the Regional Board(s) to meet our shared stormwater management goals:
 - Establishing clarity and consistency with Caltrans' practices for compliance with stormwater treatment and hydromodification control requirements for capital projects, specifically projects that require Clean Water Act Section 401 Water Quality Certifications and/or Waste Discharge Requirements;
 - Establishing clarity on alternative stormwater treatment compliance project requirements to provide equivalent water quality benefit, when on-site stormwater treatment compliance measures have been deemed infeasible, based on engineering/economic feasibility considerations;
 - Successfully implementing construction site risk assessment and water pollution control measures designed to minimize the risk for pollutant discharges into receiving waters as required in the CGP;
- comply with the Attachment IV (TMDL -Total Maximum Daily Load) and V (region-specific) requirements by:
 - exploring opportunities to incorporate stormwater treatment BMPs on our capital projects that yield Compliance Units (CUs) and trash control BMPs within significant trash generation areas (STGAs);
 - partnering with local municipal separate storm sewer system (MS4) permittees to develop projects that maximize water quality benefit by funding projects that:
 - maximize annual TMDL compliance units within TMDL priority reaches approved by the State Water Resources Control Board ;
 - maximize implementation of trash control BMPs within STGAs.

North Coast Region

To address sediment sources within sediment impaired watersheds, Caltrans will prepare an inventory of sources of excess sediment and quantify the discharge or threatened discharge in the North Coast Region.

San Francisco Bay Region

Trash Load Reduction

Caltrans conducted visual assessments of its right-of-way (ROW), approximately 20,050 acres in 2016 to identify STGAs. Caltrans is presently working with the Regional Board to re-evaluate its ROW to identify any additional STGAs that need to be incorporated in its trash control efforts. The trash re-assessment study will be completed in November 2018.

Caltrans plans to submit an updated District 4 Trash Reduction Work Plan to the Regional Board in March 2019 that summarizes:

- STGAs identified through visual assessments
- STGA benchmarks that will be addressed with timelines
- a plan to consider structural BMP retrofits on capital projects within its ROW
- a coordination plan with local agencies to develop BMP retrofits outside Caltrans ROW
- a plan for exploring enhanced maintenance measures
- a plan for monitoring and reporting progress towards meeting the STGA benchmarks
- a plan for continued public education efforts – “Protect Every Drop” campaign

Stormwater Pump Stations

Caltrans performed inspection and monitoring of pump stations in the San Francisco Bay Region. A total of 62 pump stations were inventoried within District 4. Pump stations within Caltrans District 4 were evaluated to determine which stations represented the greatest probability for discharging runoff with low dissolved oxygen (DO) into the local waterway(s). In accordance with the Caltrans NPDES permit, Attachment V, Part 2, Provision 2b, Caltrans inspected and collected DO data annually from 20 percent of the pump stations once a year (100 percent to be completed in five years). The inspection and monitoring results are reported in the District’s fiscal year 2018-2019 Annual Report will be the fifth of five years in which inspection and monitoring have been conducted.

This page was intentionally left blank.

2 District Personnel and Responsibilities

Section 2 of the DWP describes positions, addresses, and telephone numbers of personnel with responsibilities for stormwater operations within the District. This section also identifies positions having signatory authority for various notifications or documents required for submittal by a District (e.g., Project Registration Documents, including Notices of Intents or NOIs).

Water Quality Program Manager

The District Water Quality Program Manager (Program Manager) is the Office Chief of the Office of Water Quality and Mitigation. The Program Manager supervises the Stormwater Design Coordination Branches, the District NPDES Coordination Branch, the Water Quality Permits Branch, and the Water Quality Construction Support Branch. The Manager oversees all stormwater activities in the District. The Manager is also accountable for establishing an effective water quality/Stormwater Management Program and maintaining a liaison with Headquarters and District Program Managers (Division Chiefs) for effective communication, collaboration, and coordination of stormwater activities.

The responsibilities of the Manager are as follows:

- Direct District operations regarding water quality and stormwater.
- Align District efforts to interpret, implement, and comply with the Caltrans NPDES permit.
- Be the ultimate signatory authority in the District for all compliance documents and commitments regarding water quality and stormwater management.
- Work as the primary liaison on water quality and waste discharge issues between the District and Headquarters, the SWRCB, the RWQCBs, the U.S. Environmental Protection Agency (U.S. EPA), and other agencies.
- Arbitrate disputes and disagreements on policies, activities, assignments, and responsibilities regarding stormwater issues.

District NPDES Coordinator

The District NPDES Coordinator is responsible for providing technical assistance to guide staff in resolving water quality permitting issues and concerns related to project development design, construction and maintenance with respect to Caltrans compliance with the statewide NPDES Permit and project-specific permits from the RWQCBs and/or other resource agencies. The District NPDES Coordinator provides functional unit support to Project Managers, Project Engineers and other District and HQ functional units and Divisions for all phases of project activities, by providing support in obtaining project-specific permits from the RWQCB(s) and assisting with responding to enforcement actions from the RWQCBs.

The specific stormwater tasks for which the NPDES Coordinator is responsible for include:

- Serving as the focal point for the interpretation and implementation of the Caltrans NPDES Permit.
- Serving as the District's Stormwater Mitigation Program Advisor to develop and implement a work plan to ensure the District's performance objectives (stormwater treatment/compliance units) in the Ten-Year State Highway System Management Plan are met.
- Participating in coordination activities with Headquarters Stormwater Advisory Teams (SWATs) – Water Quality and Project Design.

- Preparing the Annual Report that summarizes the stormwater activities for District 4 and ensuring that the conditions of the Caltrans NPDES Permit have been met.
- Preparing the DWP annually in a manner that addresses future District goals and commitments in compliance with Caltrans' SWMP.
- Serving as the lead for the implementation of the DWP, fulfilling its commitments and reporting the progress in the Annual Reports.
- Ensuring Stormwater Data Report (SWDR) information at each phase of project development including Project Initiation Document (PID), Project Approval (PA), Plans, Specifications and Estimate (PS&E), and Construction is accurately uploaded to the Stormwater Portal.
- Coordinating with Resident Engineers and the DSWC to ensure permanent stormwater treatment control measures are built in accordance with the project plans and document the as-built condition for treatment controls that will be included in the Integrated Maintenance Management System (IMMS) and into the Storm Drain System Inventory (SDSI).
- Coordinating with District Functional Unit stormwater coordinators to ensure that all activities are in compliance with the statewide permit.
- Assisting functional unit stormwater coordinators in implementing the Enforcement Response Program (ERP) to address and report non-compliance issues.
- Coordinating with RWQCBs to ensure that the project development processes in the SWMP are consistently implemented and facilitating discussions to develop processes to address alternative compliance strategies for stormwater treatment that take engineering and economic feasibility into consideration.
- Coordinating with local MS4 permittees to identify opportunities for partnership on alternative stormwater treatment compliance projects.

District Stormwater Design Coordinator(s)

The District Stormwater Coordinators (DSWCs) are the Branch Chiefs of the Stormwater Design Coordination Branches. Under the general direction of the Manager, the DSWCs are responsible for developing and implementing stormwater design guidance District staff and local partners for incorporating stormwater construction site BMPs, design pollution prevention BMPs, treatment and hydromodification control BMPs into capital projects. The DSWCs is responsible for identifying issues and developing recommendations related to stormwater quality that affect the District projects and activities. The DSWCs supervise staff that supports and executes activities related to stormwater design during each of the project development phases - Project Initiation Document (PID); Project Approval/Environmental Document (PAED); Plans, Specifications & Estimate PS&E; and Construction). The specific stormwater tasks for which the DSWCs are responsible for include the following:

- Provide guidance and direction for the preparation, development, and implementation of a comprehensive District Stormwater Management Program.
- Oversee activities related to the notification procedures for the reuse of lead contaminated soil in accordance with the variances issued by the Department of Toxic Substances Control (DTSC).
- Monitor and evaluate the stormwater activities and procedures of municipalities, developers, and other agencies that encroach upon or administer projects within Caltrans' right-of-way.
- Establish impartial and equitable decisions that benefit Caltrans in attaining the objectives of the Stormwater Management Program.
- Provide stormwater quality language which is included in Design Project Reports.

- Prepare technical water quality studies to assess water quality impacts resulting from transportation improvements in compliance with the California Environmental Quality Act and/or National Environmental Policy Act (CEQA/NEPA).
- Prepare SWDRs, contract Plans, PS&E for inclusion of construction site, permanent stormwater treatment and hydromodification control measures that are designed to improve or minimize a project's water quality impacts.
- Prepare Stormwater Pollution Prevention Plans (SWPPPs), Permit Registration Documents (PRDs) and electronically filing NOI for obtaining coverage under the CGP prior to beginning construction.
- Assist the District Encroachment Permits Branch in evaluating water quality impacts and requirements of encroachment permit applications.
- Participate in the Design SWAT.
- Provide data for inclusion in the DWP and Annual Report.
- Assist in development of training programs.

Water Quality Permits Coordinator

The Water Quality Permits (WQP) Coordinator is the Branch Chief for the Water Quality Permits Branch. The WQP Coordinator is responsible for providing technical assistance to guide staff in resolving water quality permitting issues and concerns related to project development design, construction and maintenance with respect to Caltrans compliance with the statewide NPDES Permit and project-specific permits from the RWQCBs and/or other resource agencies. The WQP Coordinator provides functional unit support to Project Managers, Project Engineers and other District and HQ functional units and Divisions for all phases of project activities, by providing support in obtaining project-specific permits from the RWQCB(s) and assisting with responding to enforcement actions from the RWQCBs.

The specific stormwater tasks for which the WQP Coordinator is responsible for include:

- Serving as the focal contact to the RWQCB for any permitting requirements that may impact waters of the U.S. and/or waters of the state due to construction and maintenance activities.
- Coordinating the preparation of Technical Water Quality Studies during Project Approval/Environmental Document (PAED) phase.
- Coordinating with the RWQCBs prior to completion of PAED phase, to reach consensus on the strategy for avoidance and minimization of impacts to waters of the State (including scheduling, construction site water pollution control and stormwater treatment/hydromodification control measures), and the mitigation strategy for unavoidable impacts to waters of the State.
- Prepares CWA Section 401 Water Quality Certification and/or Waste Discharge Requirements (WDRs) and Caltrans NPDES Permit applications.
- Coordinate with Districts functional units to ensure environmental commitments in the project-specific 401 Water Quality Certifications/WDRs are accounted for in the project work plans and fulfilled during the construction and post-construction phases prior to project closeout.

Water Quality Construction Support Coordinator

The Water Quality Construction Support Coordinator (WQCSC) is responsible for providing technical support to the Resident Engineer (RE) to ensure compliance with the Caltrans Statewide NPDES Permit, Construction General Permit (CGP), project-specific Clean Water Act Section 401 Certifications/Waste Discharge Requirements (WDRs) and other NPDES permits for dewatering discharges.

CEESC is responsible for reviewing and recommending approval to the RE for all District 4 Water Pollution Control Plans (WPCPs) and Stormwater Pollution Prevention Plans (SWPPPs), including Dewatering and Discharge Plans (DDPs) and Temporary Creek Diversion System Plans (TCDSPs). The CEESC will submit approved SWPPPs or other reports to the RWQCBs and the Stormwater Multi-Application Reporting and Tracking System (SMARTS) as required.

The CEESC ensures that all enforcement actions or corrections requested by the RWQCBs are promptly implemented and documented. The CEESC serves as the primary conduit for information during the construction phase for the RWQCBs, Headquarters Construction, and construction field staff. The CEESC also supports the design related functional units in determining specific project needs and evaluation of water pollution control measures in the field.

Erosion Control Coordinator

The Erosion Control and Mitigation Branch facilitates the incorporation of erosion and sediment control recommendations into the planning, design, and construction of all projects within District 4. The Erosion Control and Mitigation Branch Chief is the Erosion Control Coordinator (ECC) and responsible for working closely with the District Stormwater Design Coordinator (DSWC) to incorporate erosion control recommendations into the planning, design, and construction of all projects in the District. The ECC also provides field support to Construction, Maintenance, and Permits. The specific stormwater tasks for which the Erosion Control Coordinator (ECC) is responsible include the following:

- Determine and evaluate stormwater impacts during CEQA/NEPA screening.
- Evaluate and recommend the vegetation-type for the permanent control and treatment control measures for addressing project stormwater impacts.
- Identify costs related to erosion control and on-site mitigation/restoration work on programming documents.
- Prepare and/or review the contract PS&E for inclusion of permanent and/or temporary erosion and sediment control measures that are designed to improve or minimize a project's water quality impacts.
- Prepare NOTs. Upon completion of a project's construction, the ECC will electronically file the required supporting documentation that terminates coverage under the CGP.
- Ensure that reuse locations of soil-containing lead in accordance with variances issued by Department of Toxic Substances Control (DTSC) are not subject to erosion and are stabilized as part of project design.
- Assist the District Encroachment Permits Branch in evaluating encroachment permit application erosion control requirements.
- Conduct studies that explore options for improving water quality objectives on highway planting projects.
- Assist in development of training programs -especially training programs that are attributed to tasks performed by the Erosion Control staff.
- Participate in the Design SWAT.
- Provides Erosion Control language to be included in the Water Quality section of the Design Project Report.

The ECC acts as the liaison with the Headquarters Office of Landscape Architecture to develop, submit, review, and gain approval for all specifications and details related to erosion and sediment control.

Furthermore, the ECC is the contact for the Headquarters Design Program in the approval or concurrence with specifications related to water pollution control related to erosion and sediment control.

Construction Stormwater Coordinator

Under the general direction of the Division of Construction (Construction), the Construction Stormwater Coordinator (CSWC) is responsible for developing stormwater quality policies and guidance, and daily management of Construction's stormwater quality program. The CSWC is responsible for the proper implementation of the SWMP and the DWP within Construction. The CSWC supervises staff, which implements the program requirements in the field during the construction phase. The specific tasks for which the CSWC will be responsible include:

- Work as the primary point of contact for stormwater issues during the construction phase.
- Develop and administer stormwater training for Construction staff.
- Track critical compliance milestones that occur before and during construction.
- Conduct final project closeout inspections. The CSWC submits final project closeout inspection results to the WQPC, which provides RWQCBs with NOCC/NOT for SWPPP projects.
- Review SWPPPs and provide oversight inspections for SWPPP projects.
- Prepare and submit Illicit Connection/Discharge reports for Construction.
- Participate on the Construction SWAT identified in the SWMP and represent Construction in the Stormwater Management Committee (SWMC) meetings.
- Provide data for the Annual Report.
- Provides WQPC with Final SWPPP Close-Out report for NOCC documentation.

The CSWC ensures that all enforcement actions or corrections requested by the RWQCBs are promptly implemented and documented. The CSWC serves as the primary conduit for information during the construction phase for the RWQCBs, Headquarters Construction, and construction field staff. The CSWC also supports the design related functional units in determining specific project needs and evaluation of water pollution control measures in the field.

Maintenance Coordinator

The Maintenance Coordinator is responsible for communicating with the District Division Chiefs of Maintenance and the Maintenance Operation Team (MOT) regarding the proper implementation of maintenance related sections of the SWMP and the DWP. The Maintenance Coordinator reports all stormwater related maintenance activities to the SWMC. The specific stormwater tasks for which the Maintenance Coordinator is responsible include:

- Oversee maintenance activities to ensure compliance with environmental permits and the SWMP.
- Review, monitor, and evaluate BMP implementation and effectiveness for Maintenance activities.
- Coordinate stormwater training for District Maintenance staff.
- Oversee Vegetation Control Plan (VCP) compliance and prepare VCPs.
- Conduct Facility Pollution Prevention Plan (FPPP) inspections and prepare Facility Pollution Prevention Plans (FPPPs).
- Participate in the Maintenance SWAT as identified in the SWMP and represent Maintenance in the SWMC Meetings.

- Review SWDRs and other project reports for SWPPP projects to ensure compliance with Maintenance requirement as well as ensure maintainability of stormwater control measures upon completion of construction.
- Serve as the primary contact for Maintenance related activities with regulatory agencies.
- Provide data for the District Work Plan and Annual Report.

The Maintenance Coordinator is chairperson of the MOT that meets routinely to discuss water quality issues, update the Maintenance portion of the DWP, and compile information for the Annual Reports as well as the SWMP. The Maintenance Coordinator also serves as the conduit for information between the SWMC and maintenance offices, as well as the Headquarters Maintenance Program (especially the Maintenance SWAT as identified in the SWMP).

Right-of-Way Representative

The Right of Way (ROW) Representative is a member of the SWMC and is responsible for the following:

- Attend all SWMC meetings and report any ROW stormwater activities.
- Ensure that stormwater training is available to ROW Agents tasked with property inspection responsibilities.
- Ensure that regular property inspections include stormwater inspections.
- Maintain documentation of the inspection findings and corrective actions.
- Prepare a summary of completed stormwater property inspections for use in the Annual Report.
- Disseminate information and answer questions regarding Caltrans' stormwater policy to all ROW staff involved in stormwater inspections.
- Notify the SWMC and/or the DNC of discharges or situations that appear to be in gross violation of the Permit, the SWMP, and the DWP.
- Report instances where ROW may conduct construction activities that require the development of a SWPPP and related notification.
- Provide ROW information for water quality permit applications.

Engineering Services (Hydraulics) Representative

The Engineering Services (Hydraulics) Coordinator is a member of the SWMC and is responsible for providing information that is being planned, designed, and implemented on construction project as related to permanent hydrology control measures, except those related to erosion control. The Hydraulics Coordinator is responsible for providing input and review of the Annual Report and District Work Plans (DWP). In addition, the Hydraulics Coordinator also ensures:

1. the management and staff of the Hydraulics Group are aware of the following information and activities:
 - a. the District Work Plan;
 - b. the implementation of various water pollution control strategies throughout the District and;
 - c. our commitments to minimize or prevent pollutants from being present in our discharges.

2. the design processes used by the Hydraulics Group are consistent with the DWP and the SWMP, especially those processes related to the evaluation, selection, and design of permanent control and treatment control measures.

Public Affairs Representative

The Public Affairs Coordinator is a member of the SWMC and is responsible for maintaining an effective public information program as specified in this DWP. The Public Affairs Coordinator is directly responsible for the following:

- Ensures publication of stormwater articles within District publications (e.g., newsletters).
- Provides incident information for spill reports, water quality permit applications, and other reports/notifications submitted to various agencies.
- Distributes the District's stormwater pamphlets.
- Develops and distributes public service announcements regarding stormwater.
- Ensures that stormwater information is available at miscellaneous events, such as county fairs and fleet week, for which Caltrans might be a participant.

Encroachment Permits Coordinator

The Encroachment Permits Coordinator, a member of the SWMC, is responsible for ensuring that the District Office of Permits complies with the Permit, the SWMP, and the DWP. The Office of Permits is responsible for issuing Encroachment Permits to local agencies, utility companies, and others (i.e., film production companies, marathon sponsors, etc.) that encroach into Caltrans' right-of-way for conducting construction, maintenance, or other activities necessary for their organization. The Encroachment Permits Coordinator ensures that all the activities by those permittees encroaching into Caltrans' right-of-way comply with the Project's Encroachment Permit, in a manner that is consistent with that required of Maintenance, Construction, and Design. The Encroachment Permit Branch also reviews the Stormwater Pollution Prevention Plan (SWPPP) and Water Pollution Control Plan (WPCP) for encroachment permit projects. The Encroachment Permits Coordinator is directly responsible for the following:

- Provide guidance on preparing Stormwater Data Reports (SWDRs) and Water Quality Study Reports (WQSRs), as well as review and approve SWDRs and WQSRs.
- Ensure the accuracy and adequacy of the stormwater workload allocations for each fiscal year and coordinate and track resource distributions, workload, and projects within the District.
- Assist the District's functional units in prioritizing, monitoring, tracking, and evaluating stormwater resources, activities, and operations.
- Implement a quality assurance and quality control (QA/QC) program for monitoring the activities of the District functional units, to ensure that the conditions of the Permit, the SWMP, and the DWP are implemented properly.
- Provides the guidance and direction necessary to develop strategies for addressing regulations and mandates on stormwater and waste discharges set forth by federal, state, and local regulatory agencies.
- Work as leader and chairperson of the District SWMC as well as represent the District at the Stormwater Advisory Team meetings.

Table 2-1 lists staff members responsible for implementing the Stormwater Program.

Table 2-1: District 4 Stormwater Personnel and Responsibilities

Staff Name	Title	Phone No.	E-mail	Responsibility
Hardeep Takhar	District Water Quality Program Manager	(510) 715-6816	hardeep_s_takhar@dot.ca.gov	For a complete list of responsibilities, please refer to Section 2: "District Personnel and Responsibilities" found immediately above.
Wilfung Martono	District NPDES Coordinator	(510) 286-5167	wilfung_martono@dot.ca.gov	For a complete list of responsibilities, please refer to Section 2: "District Personnel and Responsibilities" found immediately above.
Norman Gonsalves	District Stormwater DesignCoordinator	(510) 286-5930	norman_gonsalves@dot.ca.gov	For a complete list of responsibilities, please refer to Section 2: "District Personnel and Responsibilities" found immediately above.
Kamran Nakhjiri	District Stormwater DesignCoordinator	(510) 286-5664	kamran_nakhjiri@dot.ca.gov	For a complete list of responsibilities, please refer to Section 2: "District Personnel and Responsibilities" found immediately above.
Cyrus Vafai	Water Quality Permits Coordinator	(510) 286-5585	cyrus_vafai@dot.ca.gov	For a complete list of responsibilities, please refer to Section 2: "District Personnel and Responsibilities" found immediately above.
Alex McDonald	Erosion Control Coordinator	(510) 286-5834	alex_mcdonald@dot.ca.gov	For a complete list of responsibilities, please refer to Section 2: "District Personnel and Responsibilities" found immediately above.
Dragomir Bogdanic	Water Quality Construction Support Coordinator	(510) 622-0716	dragomir_bogdanic@dot.ca.gov	For a complete list of responsibilities, please refer to Section 2: "District Personnel and Responsibilities" found immediately above.
John Muench	District Construction Stormwater Coordinator	(510) 286-5200	john_muench@dot.ca.gov	For a complete list of responsibilities, please refer to Section 2: "District Personnel and Responsibilities" found immediately above.
Gary Mears	Maintenance Coordinator	(510) 715-8474	gary_mears@dot.ca.gov	For a complete list of responsibilities, please refer to Section 2: "District Personnel and Responsibilities" found immediately above.

Staff Name	Title	Phone No.	E-mail	Responsibility
Nancy Bocanegra	Right of Way Representative	(510) 286 5420	nancy_bocanegra@dot.ca.gov	For a complete list of responsibilities, please refer to Section 2: "District Personnel and Responsibilities" found immediately above.
Sharon Patch	Hydraulics Coordinator	(510) 286-4869	sharon_patch@dot.ca.gov	For a complete list of responsibilities, please refer to Section 2: "District Personnel and Responsibilities" found immediately above.
Myeast McCauley	Public Affairs Coordinator	(510) 286-5522	myeast_mccauley@dot.ca.gov	For a complete list of responsibilities, please refer to Section 2: "District Personnel and Responsibilities" found immediately above.
Marisa Muliadi-Kleiber	Encroachment Permits Coordinator	(510) 622-0138	Marisa_muliadi-Kleiber@dot.ca.gov	For a complete list of responsibilities, please refer to Section 2: "District Personnel and Responsibilities" found immediately above.

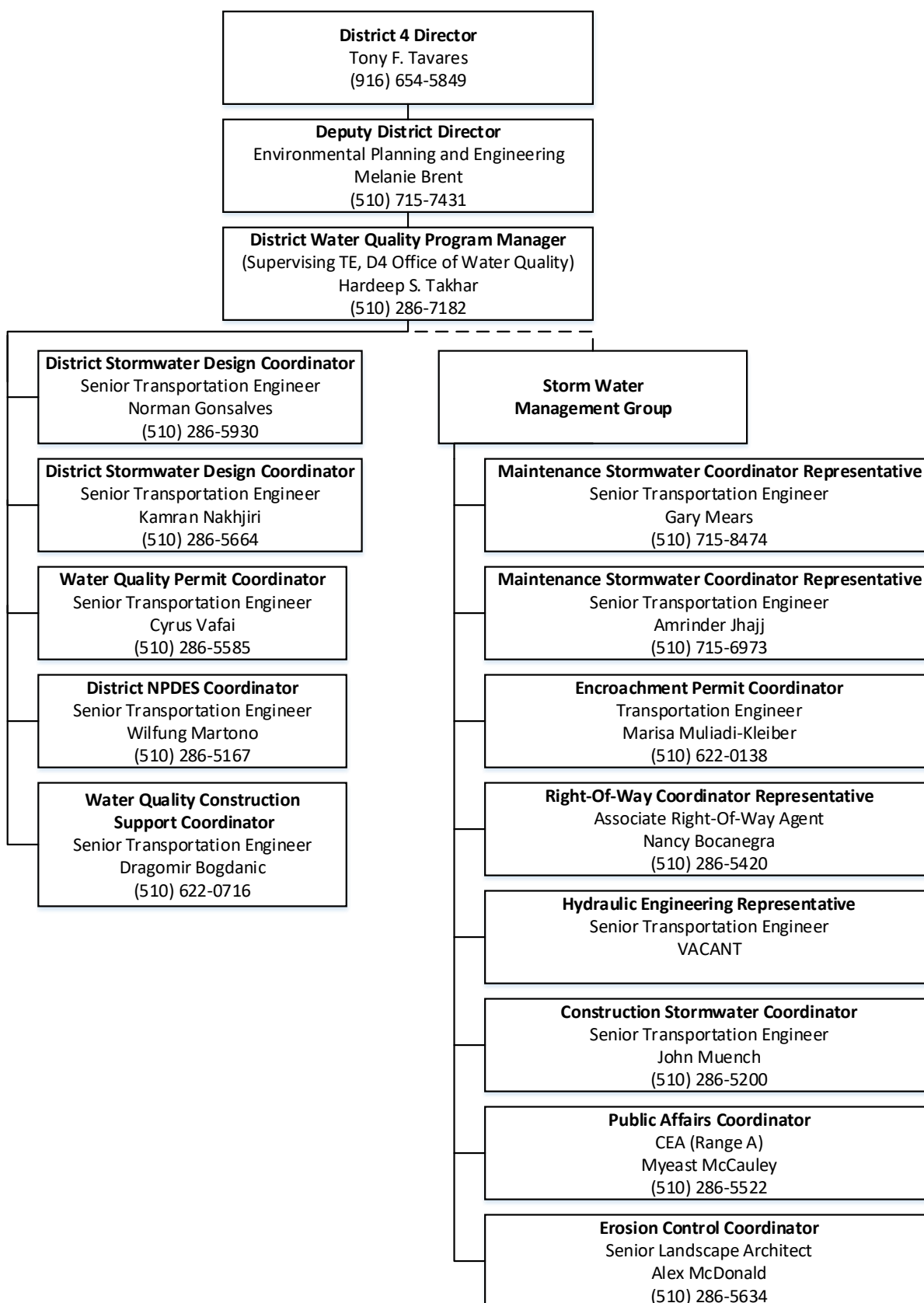
Table 2-2 lists individuals authorized to sign the documents, reports, and other information submitted by the District to either the SWRCB or the RWQCB(s). These individuals/positions may delegate authorization to their staff to sign various documents and reports required for implementation of the Stormwater Program. It also includes delegation of signatory authority for key Conformed NPDES Permit and SWMP required documents.

Table 2-2: District 4 Signatory Authority for Key Documents

Position or Individual	Phone No.	E-mail	Documents Authorized for Signatures
Tony F. Tavares District Director	(916) 654-5849	tony_tavares@dot.ca.gov	All District Documents
Hardeep Takhar Water Quality Program Manager	(510) 715-6816	hardeep_s_takhar@dot.ca.gov	All District Documents except District Work Plan
Norman Gonsalves Stormwater Coordinator	(510) 286-5930	norman_gonsalves@dot.ca.gov	All District Documents except District Work Plan
Wilfung Martono NPDES Coordinator	(510) 286-5167	wilfung_martono@dot.ca.gov	All District Documents except District Work Plan
Alex McDonald Erosion Control Coordinator	(510) 286-5662	alex_mcdonald@dot.ca.gov	Completing and filing Notification of Termination (NOT) documentation for terminating coverage under CGP
Dragomir Bogdanic Water Quality Construction Support Coordinator	(510) 622-0716	dragomir_bogdanic@dot.ca.gov	Notice and Report of Non-Compliance, Discharge or threat of Discharge Notification
Gary Mears Maintenance Stormwater Coordinator and Laura Horan Hazardous Materials Manager	(510) 286-4436 (510) 286-4492	susan_simpson@dot.ca.gov laura_horan@dot.ca.gov	Notice and Report of Non-Compliance, Discharge or Threat of Discharge Notification, Report of Illicit Connection/Discharge (IC/ID)
Encroachment Permits Coordinator	(510) 622-0138	Marisa Muliadi-Kleiber@dot.ca.gov	SWPPPs, NOC/NCC, Notice and Report of Non-Compliance, Discharge or Threat of Discharge Notification, and Report of IC/ID
Chris Wilson Environmental Engineering Coordinator	(510) 286-5647	chris_r_wilson@dot.ca.gov	Notice of Soil Reuse with Aerially Deposited Lead (ADL)
Resident Engineers	Various – project dependent	various – project dependent	SWPPP, Notice and Report of Non-Compliance, Discharge or Threat of Discharge Notification, NOC/NCC
Nancy Bocanegra Right-of-Way Representative	(510) 286-5420	nancy_bocanegra@dot.ca.gov	SWPPPs, NOC/NCC, Notice and Report of Non-Compliance, Discharge or Threat of Discharge Notification, and Report of Illicit Connection/Discharge
Gary Mears Maintenance Stormwater Coordinator	(510) 715-8474	gary_mears@dot.ca.gov	Facility Pollution Prevention Plans (FPPP)

Figure 2-1 shows an organizational chart describing key persons with responsibilities for stormwater operations within the District.

Figure 2-1: District 4 Organizational Chart



This page was intentionally left blank.

3 District Facilities and Water Bodies

Section 3 of the DWP identifies maintenance stations (including crew functions and street addresses), vista points, commercial vehicle enforcement areas, roadside rest areas, park and ride facilities, toll road and bridge plazas, equipment shops, and other Caltrans facilities. Facility Pollution Prevention Plans (FPPPs) are prepared and implemented at Maintenance facilities within the District's boundaries, such as maintenance stations, material storage facilities, and equipment shops. To comply with Department of Homeland Security policy, the table and map identifying these facilities is not available to the public. For more information, contact Caltrans' Office of Emergency Management or Division of Environmental Analysis.

This page was intentionally left blank.

4 Drinking Water Reservoirs and Recharge Facilities

Section 4 of the DWP describes and identifies the high-risk areas, which are locations where spills or other releases from District-owned rights-of-way, roadways, or facilities may discharge directly to municipal or domestic water supply reservoirs or ground water percolation facilities. Projects that potentially drain to these high-risk areas consider project features that enhance spill response.

Drinking water reservoirs and recharge facilities are areas such as locations where spills from District-owned ROWs or facilities can discharge directly to municipal or domestic water supply reservoirs or ground water percolation facilities. To generate the list of municipal, domestic water supply reservoirs, and ground water percolation facilities, the District first contacted known public and private water supply providers. From the information received, the District determined which facilities were susceptible to a direct spill from a District activity or facility. This determination was based on proximity between the water body and the District's facility, use characteristics of the facility, and the probable spill response time.

When planning projects within these defined areas, District 4 considers project design features for aiding in the prevention of accidental spills that could impact the area; these features are typically commensurate with safety improvements for reducing vehicle accidents. Examples of these features may include, but are not limited to, median barrier, guardrail, signalization, and vehicle restrictions. Features considered for improving spill response time typically include elongated drainage paths, call boxes, signage, or video surveillance.

A list of drinking water reservoirs and recharge facilities within District 4 is presented in Table 4-1.

Table 4-1: District 4 Drinking Water Reservoirs and Recharge Facilities

Road Segment/ Facility	County	Regional Board	Drinking Water Reservoir or Recharge Facility Area	Description	Comments
None	Contra Costa	2	Briones Reservoir	Located two miles north of Highway 24 in Orinda	Does not receive runoff from a state route
Route 4	Contra Costa	2	Clifton Court Forbay	Located 1 mile south of Highway 4	Potentially received runoff from Highway 4
Route 24	Contra Costa	2	Lafayette Reservoir	Located just south of Highway 24 in Orinda	Potentially received runoff from Highway 24
None	Contra Costa	2	Las Vaqueros Reservoir	Located in south eastern Contra Costa County near the Alameda County Line	Does not receive runoff from a state route
None	Contra Costa	2	San Pablo Reservoir	Located two miles north of Highway 24 in Orinda	Does not receive runoff from a state route
None	Marin	2	Nicasio Reservoir	Located one mile east of Highway 1.	Does not receive runoff from a state route
Route 128	Napa	2	Lake Hennessay	Locate along Highway 128	Potentially receives runoff from route 128
None	Napa	2	Rector Reservoir	Located northeast of Yountville	Does not receive runoff from a state route

Road Segment/ Facility	County	Regional Board	Drinking Water Reservoir or Recharge Facility Area	Description	Comments
None	San Francisco	2	Laguna Honda Reservoir	Located in San Francisco	Does not receive runoff from a state route
None	San Francisco	2	Sunset Reservoir	Located in San Francisco	Does not receive runoff from a state route
280	San Mateo	2	Bear Gulch Reservoir	Located in the city of Atherton northeast of Highway 280	Potentially received runoff from Highway 280
280/35	San Mateo	2	Crystal Springs Reservoir	Located along Highways 280 and 35	Potentially receive runoff from highway 280 and 35
280/35	San Mateo	2	San Andreas Lake	Located along Highways 280 and 35	Potentially receive runoff from highway 280 and 35
17	Santa Clara	3	Almaden Reservoir	Located approximately 5 miles east of Highway 17	May receive runoff from highway 17
101	Santa Clara	2	Anderson Lake	Located one mile east of Highway 101.	Does not receive runoff from a state route
680	Santa Clara	2	Calaveras Reservoir	Located 4 miles east of Highway 680	Does not receive runoff from any state route
101	Santa Clara	2	Calero Reservoir	Located 2 miles west of Highway 101	Does not receive runoff from any state route
101	Santa Clara	2	Chesbro Reservoir	Located 4 miles west of Highway 101	Does not receive runoff from any state route
101	Santa Clara	2	Coyote Lake	Located 2 miles east of Highway 101	Does not receive runoff from any state route
101	Santa Clara	2	Lake Cunningham	Located 2 miles east of Highway 101	Does not receive runoff from any state route
17	Santa Clara	3	Lake Elsmen	Located 2 miles east of Highway 17	Does not receive runoff from any state route
None	Santa Clara	2	Guadalupe Reservoir	Located in the mountains of south of San Jose	Does not receive runoff from any state route
17	Santa Clara	3	Lexington Reservoir	Located adjacent to Highway 17	May receive runoff from Highway 17
85	Santa Clara	2	Stevens Creek Reservoir	Located 1 mile west of Highway 85	Does not receive runoff from any state route
101	Santa Clara	2	Uvas Reservoir	Located 5 miles west of Highway 101	Does not receive runoff from any state route
128	Sonoma	2	Lake Sonoma	Located in Geyserville just west of Highway 128	Does not receive runoff from any state route

5 Slopes Prone to Erosion

Section 5 of the DWP identifies the road segments within District 4 that have slopes which are prone to erosion and sediment discharge. The road segments that are located in sensitive watersheds, or where there is an existing or potential threat to water quality, will be prioritized for implementing appropriate controls to the maximum extent practicable. In each Annual Report, the status of stabilization activities where applicable will be reported. Table 5-1 is District 4's inventory of vulnerable road segments where erosion occurs and stabilization may be required, or where rock cut slopes are located and rock falls have occurred.

Table 5-1: District 4 Inventory of Road Segments Prone to Erosion

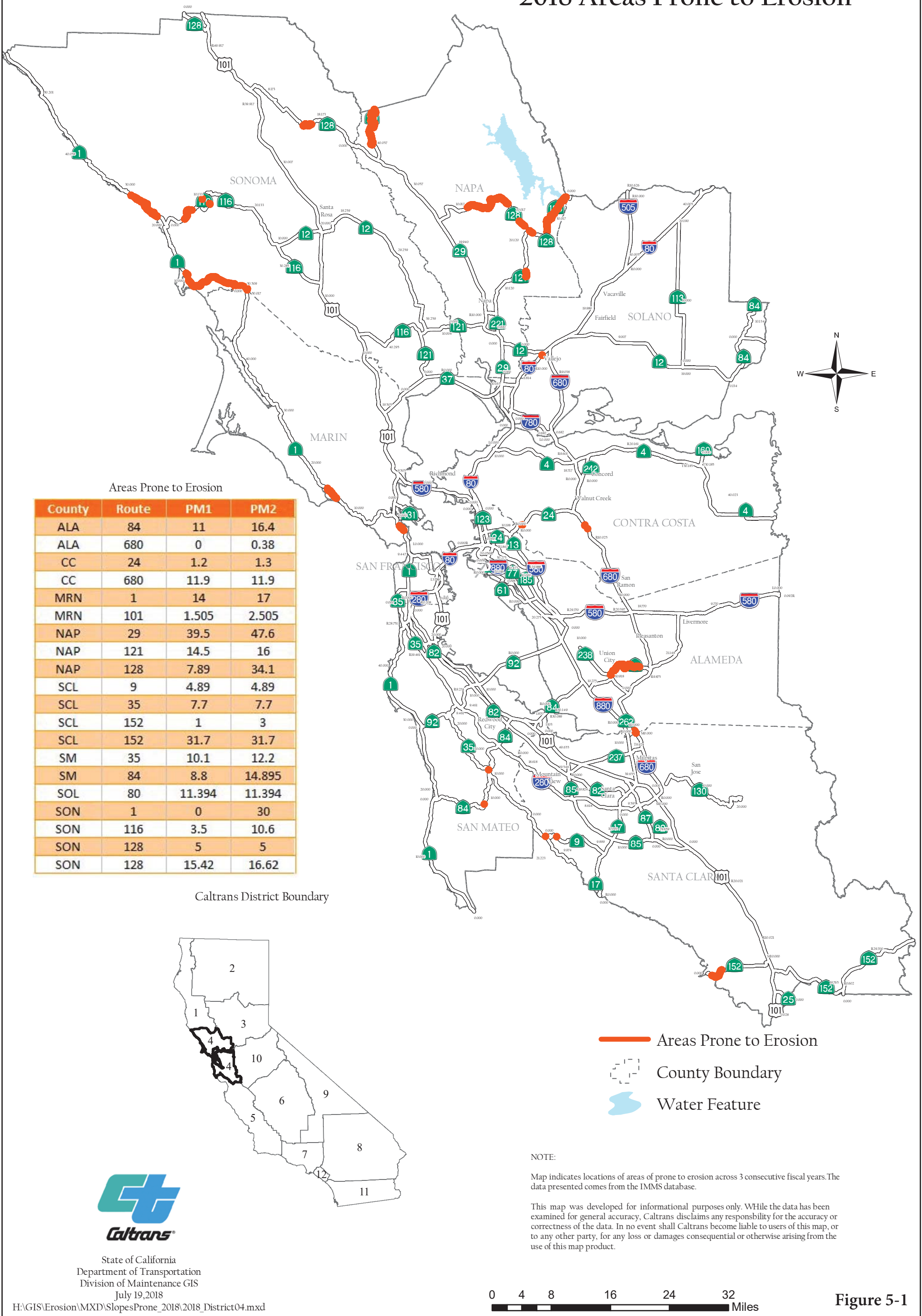
Road Segment	County	Regional Board	Watershed	Scheduled Stabilization Date
Route 84B	Alameda	2	Alameda Creek	TBD
Route 24	Contra Costa	2	Pinole	TBD
Route 24	Contra Costa	2	Pinole	TBD
Route 680	Contra Costa	2	Concord, Walnut Creek	TBD
Route 101	Marin	1	Novato	TBD
Route 29	Napa	2	Napa River	TBD
Route 128	Napa	5	Berryessa, Capell Creek	TBD
Route 9	Santa Clara	3	Santa Cruz, San Lorenzo	TBD
Route 9	Santa Clara	2	Palo Alto	TBD
Route 84	San Mateo	2	San Gregorio Creek	TBD
Route 84	San Mateo	2	Palo Alto	TBD
Route 84	San Mateo	2	San Gregorio Creek	TBD
Route 80	Solano	2	San Pablo Bay	TBD
Route 128	Solano	5	East Rocky Ridge	TBD
Route 1	Sonoma	1	Estero Americano	TBD
Route 1	Sonoma	1	Lower Russian River	TBD
Route 1	Sonoma	1	Russian Gulch	TBD
Route 1	Sonoma	1	Gualala River	TBD
Route 116	Sonoma	1	Lower Russian River	TBD
Route 116	Sonoma	1	Lower Russian River	TBD
Route 128	Sonoma	1	Middle Russian River	TBD

Figure 5-1 is a map showing California State Highway System areas that required maintenance within District 4 in 2018, including rock cut slopes, landslides, and moderate soil erosion.

This page was intentionally left blank.

District 4

California State Highway System 2018 Areas Prone to Erosion



State of California
Department of Transportation
Division of Maintenance GIS
July 19, 2018

H:\GIS\Erosion\MXD\SlopesProne_2018\2018_District04.mxd

This page was intentionally left blank.

6 Implementation

Section 6 of the DWP identifies the specific projects in which work is planned during the fiscal year within the Project Approval/Environmental Document (PA/ED), Plans, Specifications, and Estimates (PS&E), and Construction development phases. The anticipated schedule of construction and maintenance projects is subject to change. These projects are limited to those meeting any of the following criteria:

1. All projects that require soil disturbing activities
2. Adjacent to a Drinking Water or Ground Water Recharge Facility, as described in Section 4 of the DWP
3. A supplemental environmental project
4. Additional projects per agreement between the District and local RWQCB

Projects listed in Table 6-1 include (where applicable):

1. Location (county, route and post mile limits)
2. Project number (expense authorization)
3. Basic Project Description
4. Disturbed soil area
5. Presence of receiving waters within or adjacent to project limits, with special designation for 303(d) listed water bodies (adopted)
6. Drinking Water Reservoir or Ground Water Recharge Facility within or adjacent to project (as identified in Section 4 of the DWP)
7. Projected milestone dates of PA/ED, PS&E, begin Construction, and end Construction
8. Description of Construction Controls
9. Post-Construction Treatment Controls (types and quantities)
10. Dredge and fill (CWA-401) activities within the project
11. Other Regional Water Control Board Permits Required
12. Potential and Actual Impacts of Project's Discharge
13. Area of New Impervious Surface
14. Percentage of New Impervious Surface to Existing Impervious Surface

The updated lists of projects meeting these criteria will also be provided to the RWQCB annually on October 1st. Furthermore, this section identifies planned maintenance projects with soil disturbance. Information associated with the project includes location, affected water body, and area of disturbance. In addition, this section also describes the planned stormwater monitoring activities within the District; however, these activities may be conducted jointly with other Districts and HQ. Consequently, the information contained in a DWP may be repeated in another DWP.

This page was intentionally left blank.

Table 6-1: District 4 Anticipated Project Development and Construction Schedule

No.	EA	Project Location					Project Description ^{1,2}	Water Bodies Within or Adjacent to Project Limits ³	Dredge and Fill Activities (Y/N/NA) ⁴	Other Regional Water Board Permits Required ⁵	Potential and Actual Impacts of Project's Discharge ⁶	Disturbed Soil Area (acres)	Area of New Impervious Surface (acres)	Percentage of New Impervious Surface to Existing Impervious Surface	Description of Construction Controls (SWPPP/WPCP/TBD) ⁷	Post-Construction Treatment Control Type, Quantity ⁸	Anticipated Project Delivery Schedule		Construction Period	
		Co.	Route	Begin PM	End PM	RB ⁹											PA&ED Date	PS&E Date	Start Date	End Date
1	3A790	SOL	80	23	23.1	5	RECONSTRUCTION OF INTERCHANGE	Laguna Creek, Alamo Creek, Ulatis Creek	TBD	N	TBD	7.24	4.64	<50%	SWPPP	INDBAS	12/6/2017	12/18/2018	3/15/2018	2/8/2019
2	2G350	SCL	280	18.6	18.6	2	Safety Improvement	Matadero Creek	N	N	TBD	0.3	0	TBD	WPCP	E	2/15/2018	2/21/2018	8/15/2018	12/18/2019
3	2G740	ALA	185			TBD	Upgrade existing curb ramps and replace existing sidewalk	San Lorenzo Creek	N	N	TBD	2.76	0	TBD	SWPPP	E	1/2/2019	7/1/2020	1/6/2021	12/31/2021
4	4H120	ALA	580	0	0	2	BART extension.	TBD	TBD	TBD	TBD	TBD	TBD	TBD	TBD	TBD	10/1/2018	12/1/2020	2/1/2022	2/3/2025
5	2G340	SON	101	20.7	21.8	TBD	IN SONOMA COUNTY, ON ROUTE 101, FROM PM 20.7 TO 21.8	TBD	TBD	TBD	TBD	TBD	TBD	TBD	TBD	TBD	9/28/2018			
6	2J510	MRN	1	35.26	35.26	TBD	In Marin County on Route 1 near Marshall from 0.3 mile north of Ellis Creek Bridge (Br#27-0025) to 0.1 mile south of Clark Road.	TBD	TBD	TBD	TBD	TBD	TBD	TBD	TBD	TBD	TBD	8/14/2018	11/14/2018	1/31/2023
7	2J580	CC	24	4.3	4.3	TBD	IN CONTRA COSTA COUNTY, ON ROUTE 024, AT THE EASTBOUND ROUTE 24 OFF RAMP TO SOUTHBOUND ACCALANES ROAD.	TBD	TBD	TBD	TBD	TBD	TBD	TBD	TBD	TBD	6/28/2019	3/2/2020	4/19/2010	6/17/2014
8	2J730	SM	101	7.13	7.13	2	REPLACE BRIDGE	Cordilleras Creek, San Francisco Bay Lower	TBD	N	TBD	2	0.35	< 50%	SWPPP	BS, 1	6/1/2018	12/1/2019	12/7/2018	2/17/2023
9	2J760	ALA	880	27.23	27.23	2	SUB-STRUCTURE REHAB/SCOUR MITIGATION	TBD	TBD	TBD	TBD	TBD	TBD	TBD	TBD	TBD	7/21/2017	9/6/2019	12/6/2018	4/17/2021
10	2J890	SCL	101	9	16.78	TBD	In and near Morgan Hill, from south of Masten Avenue to East Main Avenue.	TBD	TBD	TBD	TBD	TBD	TBD	TBD	TBD	TBD	8/1/2018	8/29/2019	5/1/2020	5/31/2021
11	4J030	SCL	101	0.8	0.8	2	Inject foundation grout, construct rock slope protection, and install drainage system.	Camadero Creek, Pajaro River, Tar Spring	N	N	TBD	0.02	0	TBD	WPCP	E	9/3/2018	8/28/2019	5/4/2020	5/3/2021
12	4J060	SM	1	32.1	32.2	2	REPAIR BOX CULVERT REMOVE RSP AND SOIL FROM THE BOX CULVERT.	San Gregorio Creek, Pacific Ocean	Y	N	-	0.2	0	0	WPCP	-	3/19/2018	4/22/2019	10/23/2019	10/3/2023
13	4J420	MRN	101	0.2	0.2	2	Install Flood Gates and Modify Box Culvert	Arroyo Corte Madera Del Presidio, Corte Madera Creek, Coyote Creek	N	N	TBD	0.08	0	TBD	WPCP	E	5/21/2018	7/8/2019	10/7/2019	12/19/2023
14	4J460	SON	116	11.8	12.169	TBD	Install APS and upgrade curb ramps 7 sidewalks	Alameda Creek	N	N	TBD	<1	<1	TBD	WPCP	E	8/8/2018	1/17/2024	2/28/2024	5/10/2028
15	4J490	ALA	13	6.5	7.5	2	Outer Separation Barrier	San Lorenzo Creek-Frontal San Francisco Bay Estuaries	N	N	TBD	3	TBD	TBD	WPCP	C	4/28/2017	5/4/2018	2/6/2019	2/5/2020
16	4J540	ALA	880	27.1	27.32	TBD	IN ALA COUNTY ON I-880 SOUTHBOUND BETWEEN PM 27.10 AND 27.32	TBD	TBD	N	TBD	TBD	TBD	TBD	TBD	TBD	6/30/2018	6/30/2019	4/8/2020	5/15/2021

¹ Supplemental Environmental Projects designated as “SEP.”

² Projects adjacent to Drinking Water Reservoirs or Ground Water Recharge Facilities are noted (DW) and (GW), respectively.

³ Water bodies with designation for 303(d) designation are noted in parentheses.

⁴ If yes, a 401 permit will be required for this project. NA = Not Available at this time.

⁵ Regional Water Board Permits required other than Construction General Permit and Clean Water Act Section 401 water quality certification, such as Waiver of Discharge Requirements, Dewatering Permits, Bridge Painting WDRs, etc.

⁶ This information may come from the Water Quality Assessment Report prepared for each project, a Water Quality Technical Memorandum, or other document that evaluates the water quality impacts of a project.

⁷ A description of the Construction Controls is available in the project’s Storm Water Pollution Prevention Plan (SWPPP), Water Pollution Control Plan (WPCP), or is To Be Determined (TBD) if the Disturbed Soil Area is unavailable.

⁸ Treatment Control Status identified by: device type/number of devices, exempt (“E”), or under consideration (“C”). See Treatment Control Status Legend below for device type abbreviations.

⁹ Regional Board

Table 6-1: District 4 Anticipated Project Development and Construction Schedule

No.	EA	Project Location					Project Description ^{1,2}	Water Bodies Within or Adjacent to Project Limits ³	Dredge and Fill Activities (Y/N/NA) ⁴	Other Regional Water Board Permits Required ⁵	Potential and Actual Impacts of Project's Discharge ⁶	Disturbed Soil Area (acres)	Area of New Impervious Surface (acres)	Percentage of New Impervious Surface to Existing Impervious Surface	Description of Construction Controls (SWPPP/WPCP/TBD) ⁷	Post-Construction Treatment Control Type, Quantity ⁸	Anticipated Project Delivery Schedule		Construction Period	
		Co.	Route	Begin PM	End PM	RB ⁹											PA&ED Date	PS&E Date	Start Date	End Date
17	4J730	ALA	880	20.9	20.9	TBD	IN ALA COUNTY I-880 AND RTE 238 CONNECTOR.	TBD	TBD	TBD	TBD	TBD	TBD	TBD	TBD	TBD	7/2/2018	2/3/2020	11/2/2020	12/31/2021
18	4J790	SF	101	6.71	8	2	Streetscape and utility upgrade	San Francisco Bay	N	N	TBD	2	2	TBD	SWPPP	Other (not needed)	5/2/2016	9/1/2016	1/2/2017	6/1/2018
19	4J750	ALA	84	0.73	3.06	TBD	Outer Separation Barrier	Don Edwards San Francisco Bay National Wildlife Refuge, San Francisco Bay-Lower and -South	N	N	TBD	3.6	3.4	TBD	SWPPP	C	9/30/2018	2/24/2020	12/7/2020	4/1/2022
20	4J930	SCL	101	0	52.5	TBD	IN SANTA CALRA COUNTY, ON ROUTE 101 AT VARIOUS LOCATIONS.	TBD	TBD	TBD	TBD	TBD	TBD	TBD	TBD	TBD	7/26/2018	9/11/2019	12/13/2019	2/27/2024
21	4J890	SCL	82	19.2	26.4	TBD	Resurface the existing AC	Saratoga Creek-Frontal San Francisco Bay Estuaries	N	N	TBD	<1.0	<1.0	TBD	WPCP	E	7/27/2018	9/12/2019	12/13/2019	2/23/2024
22	4J980	ALA SCL				TBD	Stormwater Treatment BMPs	San Leandro Creek, Old Alameda and Alameda Creeks, Coyote Creek, San Francisco Bay-Central	N	N	TBD	2.6	TBD	TBD	SWPPP	Other (not needed)	7/31/2018	9/16/2019	12/18/2019	3/1/2024
23	0K160	CC	80	0	13.7	2	IN CC COUNTY ON I-80 FROM COUNTY LINE TO CARQUINEZ BRIDGE (Install safety lighting and upgrade median)	San Francisco Bay, Cerrito Creek, Carquinez Strait, Rodeo Creek, Wildcat Creek, Garrity Creek, Pinole Creek	N	N	N	<1	0	<50%	WPCP	N	10/8/2018	3/18/2024	1/2/2025	7/10/2028
24	4J970	SF	101	2	4.2	TBD	IN SF ON HIGHWAY 101 BETWEEN PM 2.0 AND 4.2.	TBD	TBD	TBD	TBD	TBD	TBD	TBD	TBD	TBD	8/2/2018	-	-	3/5/2024
25	0K120	59V04		0	0	2	IN ALAMEDA and CONTRA COSTA COUNTIES ON VARIOUS ROUTES (Install Rectangular Rapid Flashing Beacons at ramp termini with uncontrolled pedestrian crossings)	San Joaquin River, Walnut Creek, San Ramon Creek, Coyote Creek, Alameda Creek, San Francisco Bay, San Lorenzo Creek, Perella Creek, Lake Temescal, San Pablo Creek, Wildcat Creek	N	N	TBD	2	<1 ac	<50%	WPCP	N	10/11/2018	3/21/2024	5/2/2024	7/13/2028
26	0K240	SCL	237	7	8	2	IN SANTA CLARA COUNTY IN SAN JOSE ON EASTBOUND ROUTE 237 FROM NORTH FIRST STREET OVERCROSSING TO ZANKER ROAD OVERCROSSING	Coyote Creek, Guadalupe River	N	N	TBD	3.7	1.65	<50%	SWPPP	C	8/6/2018	6/4/2019	12/24/2019	3/7/2024
27	0K240	SCL	237	7.1	8	2	IN SANTA CLARA COUNTY IN SAN JOSE ON EASTBOUND ROUTE 237 FROM NORTH FIRST STREET OVERCROSSING TO ZANKER ROAD OVERCROSSING	Coyote Creek, Guadalupe River	N	N	TBD	3.7	1.65	<50%	SWPPP	C	8/6/2018	6/4/2019	12/24/2019	3/7/2024
28	0K250	SCL	237	7	8	2	IN SANTA CLARA COUNTY IN SAN JOSE ON WESTBOUND ROUTE 237 FROM ZANKER ROAD OVERCROSSING TO NORTH FIRST STREET OVERCROSSING Construction of Auxiliary Lane)	Coyote Creek, Guadalupe River	N	N	TBD	5.7	2.47	<50%	SWPPP	C	8/6/2018	-	11/1/2022	11/1/2023
29	0K490	ALA	185	0.3	6.4	2	IN ALA COUNTY ON RTE 185 FROM A ST TO ROUTE 112 (Roadway Rehabilitation)	Lorenzo Creek, Estudillo Canal, Cordelia Slough, Ulati Creek	N	N	N	0	0	<50%	WPCP	N	10/24/2018	4/3/2024	5/15/2024	7/26/2028

Table 6-1: District 4 Anticipated Project Development and Construction Schedule

No.	EA	Project Location					Project Description ^{1,2}	Water Bodies Within or Adjacent to Project Limits ³	Dredge and Fill Activities (Y/N/NA) ⁴	Other Regional Water Board Permits Required ⁵	Potential and Actual Impacts of Project's Discharge ⁶	Disturbed Soil Area (acres)	Area of New Impervious Surface (acres)	Percentage of New Impervious Surface to Existing Impervious Surface	Description of Construction Controls (SWPPP/WPCP/TBD) ⁷	Post-Construction Treatment Control Type, Quantity ⁸	Anticipated Project Delivery Schedule		Construction Period	
		Co.	Route	Begin PM	End PM	RB ⁹											PA&ED Date	PS&E Date	Start Date	End Date
30	0K510	MRN	1	11.2	11.2	2	IN MRN IN THE CITY OF STINSON BEACH ON US 1 PM 11.2(Bridge Culvert Replacement).	San Rafael Creek	N	N	N	0.05	0	<50%	WPCP	N	10/24/2018	4/3/2024	5/15/2024	7/26/2028
31	0K570	SM	1	1.12	1.12	2	In SM county, on RTE 001, at Año Nuevo, at 1.1 miles north of Santa Cruz county line (Roadway Rehabilitation).	Año Nuevo Creek	N	N	N	0.25	0.25	<50%	WPCP	N	8/23/2018	10/9/2019	6/29/2020	3/26/2024
32	0K650	59V04		0	0	TBD	IN ALAMEDA AND CONTRA COSTA COUNTIES ON VARIOUS ROUTES AT VARIOUS POST MILES.	TBD	TBD	N	TBD	TBD	TBD	TBD	TBD	TBD	11/14/2018	4/24/2024	6/5/2024	8/16/2028
33	0K670	SM	82	19.8	19.8	2	In SM county, on RTE 82, in South San Francisco City, 0.1 mile north of Francisco Drive (Roadway Rehabilitation).	San Mateo Creek, Colma Creek	N	N	N	0.25	0.25	<50%	WPCP	N	9/7/2018	10/23/2019	6/29/2020	4/10/2024
34	0K710	SCL	101	38	40	2	US 101 Zanker Road/Skyport Drive/Fourth Street project new interchange (Interchange Improvements)	Coyote Creek and Guadalupe River	N	N	N	40	30	>50%	SWPPP	C	9/14/2018	10/30/2019	2/5/2020	4/17/2024
35	0K800	MRN	101	13.7	13.7	2	IN MRN COUNTY IN THE CITY OF FAN RAFAEL, ON RTE 101, PM 13.7. (Install APS, upgrade curb ramps and repair sidewalks).	Gallinas Creek	N	N	N	0.5	0.46	TBD	WPCP	N	12/4/2018	5/15/2024	6/24/2024	8/29/2028
36	1K280	SCL	101			2	Widening Blossom Hill Overcrossing.	Coyote Creek	N	N	N	7	3.2	TBD	SWPPP	BIOSWL, TBD	12/20/2017	-	-	5/15/2019
37	1K670	ALA	980	1.2	1.2	TBD	Alameda County on State Route 980 at Post Mile 1.2.	TBD	TBD	TBD	TBD	TBD	TBD	TBD	TBD	TBD	12/3/2018	11/1/2019	11/1/2020	8/29/2025
38	1K720	SON	1	1	28.7	TBD	In Sonoma County on route 1 from 0.6 miles south of Middle Road to Jewell Gulch.	TBD	TBD	TBD	TBD	TBD	TBD	TBD	TBD	TBD	4/3/2019	5/18/2020	8/17/2020	10/28/2024
39	1K730	SON	1	30.8	40.6	TBD	Culvert Rehabilitation	Pacific Ocean	Y	N	TBD	0.15	0.12	TBD	WPCP	C	4/3/2019	5/18/2020	8/17/2020	10/28/2024
40	1K750	SON	1	41.2	54.6	TBD	Drainage System Restoration	Pacific Ocean	Y	N	TBD	0.14	0.14	TBD	WPCP	C	4/3/2019	5/18/2020	8/17/2020	10/28/2024
41	1K760	SON	1	45.41	45.41	TBD	Drainage System Restoration	Pacific Ocean	N	N	TBD	0.01	0.01	TBD	WPCP	C	4/3/2019	5/18/2020	8/17/2020	10/28/2024
42	2K140	SCL	17	0	6.55	TBD	HEBARD WAY INTERSECTION TO MAIN STREET OVERCROSSING.	TBD	TBD	TBD	TBD	TBD	TBD	TBD	TBD	TBD	5/9/2019	1/13/2020	9/23/2020	10/5/2022
43	2K170	ALA		0	0	TBD	In Alameda County on route 77 and 880 at various locations at San Leandro OC-BR# 33-284, Tennyson Road OC-BR# 33-0236, Washington Ave. OC-BR# 33-0166 and Damon Slough (SB on-ramp) BR# 33-0142K.	TBD	TBD	TBD	TBD	TBD	TBD	TBD	TBD	TBD	5/14/2019	6/29/2020	9/28/2020	12/11/2024
44	2K190	SM	1	44.21	44.21	TBD	In san Mateo County in Pacifica on route 1 at Paloma Ave OC) Br no. 35-0187), and; in the city and county of San Francisco on Route 101 at Alemany Circle Undercrossing (SB 101 on-ramp, Br. No. 34-0064K). Alemany Circle Undercrossing (NB 101 on-ramp,	TBD	TBD	TBD	TBD	TBD	TBD	TBD	TBD	TBD	5/14/2019	6/29/2020	9/28/2020	12/11/2024
45	2K240	MRN	101	15.57	15.57	TBD	In Marin County in San Rafael on US-101 at Miller Creek Road OC and in Sonoma County in Santa Rosa on US-101 at Todd Road OC and Baker Avenue OC.	TBD	TBD	TBD	TBD	TBD	TBD	TBD	TBD	TBD	5/24/2019	7/9/2020	10/8/2020	12/23/2024

Table 6-1: District 4 Anticipated Project Development and Construction Schedule

No.	EA	Project Location					Project Description ^{1,2}	Water Bodies Within or Adjacent to Project Limits ³	Dredge and Fill Activities (Y/N/NA) ⁴	Other Regional Water Board Permits Required ⁵	Potential and Actual Impacts of Project's Discharge ⁶	Disturbed Soil Area (acres)	Area of New Impervious Surface (acres)	Percentage of New Impervious Surface to Existing Impervious Surface	Description of Construction Controls (SWPPP/WPCP/TBD) ⁷	Post-Construction Treatment Control Type, Quantity ⁸	Anticipated Project Delivery Schedule		Construction Period	
		Co.	Route	Begin PM	End PM	RB ⁹											PA&ED Date	PS&E Date	Start Date	End Date
46	2K280	SCL	9	5.97	5.97	TBD	In Santa Clara County, near Saratoga, at 0.2 mile north of Piece Road.	TBD	TBD	TBD	TBD	TBD	TBD	TBD	TBD	TBD	6/3/2019	7/16/2020	10/15/2020	12/31/2024
47	2K330	SON	101	38.7	41.4	TBD	In Sonoma County, on Route 101, at median areas north of Lytton Sprint Road IC ant at Geyserville Avenue on-ramp.	TBD	TBD	TBD	TBD	TBD	TBD	TBD	TBD	TBD	6/5/2019	7/20/2020	10/19/2020	1/3/2025
48	2K350	SON	101	55.5	55.5	TBD	In Sonoma County on Route 101, near Cloverdale at 2 mile North of Route 128.	TBD	TBD	TBD	TBD	TBD	TBD	TBD	TBD	TBD	6/5/2019	7/20/2020	10/19/2020	1/3/2025
49	2K360	SON	116	9.5	9.5	TBD	In Sonoma County on route 116, near Monte Rio, at 0.7 mile of old Monte Rio Road.	TBD	TBD	TBD	TBD	TBD	TBD	TBD	TBD	TBD	6/5/2019	7/20/2020	10/19/2020	1/3/2025
50	2K370	SON	116	43.3	43.3	TBD	In Sonoma County on Route 116, Near Monte Rio, at 0.7 Mile East of Old Monte Rio Road.	TBD	TBD	TBD	TBD	TBD	TBD	TBD	TBD	TBD	6/5/2019	7/20/2020	10/19/2020	1/3/2025
51	2K380	SON	121	9.7	9.7	TBD	In Sonoma County on Route 121, near Schellville, 0.1 mile east of Ramal Road.	TBD	TBD	TBD	TBD	TBD	TBD	TBD	TBD	TBD	6/5/2019	7/20/2020	10/19/2020	1/3/2025
52	2K390	SON	128	1.8	1.8	TBD	In Sonoma County, on route 120, at 3 miles West of North Cloverdale Blvd.	TBD	TBD	TBD	TBD	TBD	TBD	TBD	TBD	TBD	6/5/2019	7/20/2020	10/19/2020	1/3/2025
53	2K420	NAP	128	9.2	9.2	R2	Storm Damage Restoration	Conn Creek, Lake Hennessey	Y	N	Y	0.09	0.012	TBD	WPCP	E	6/5/2019	7/20/2020	10/19/2020	1/3/2025
54	2K690	ALA	84	6.9	10.8	2	Pavement Preservation	Alameda Creek (303d)	TBD	N	TBD	0	28.36	0	WPCP	E	1/2/2019	7/1/2020	12/10/2020	12/31/2021
55	2K700	ALA	880	0	12	TBD	In Alameda County, in Fremont and Union City, from Santa Clara/Alameda County line to 0.20 mile north of Patterson Slough Bridge.	TBD	TBD	TBD	TBD	TBD	TBD	TBD	TBD	TBD	1/2/2019	7/2/2020	-	12/31/2021
56	2K730	CC	680	12.6	21.2	TBD	IN CONTRA COSTA COUNTY FROM RUDGEAR RD UNDERCROSSING TO ROUTE 4/680 SEPARATION.	TBD	TBD	TBD	TBD	TBD	TBD	TBD	TBD	TBD	1/2/2019	7/1/2020	12/11/2020	12/31/2021
57	2K750	SCL	152	7.6	10.3	TBD	In Santa Clara County from 0.3 mile West of Santa Teresa Blvd. to Route 101.	TBD	TBD	TBD	TBD	TBD	TBD	TBD	TBD	TBD	6/15/2018	8/1/2018	3/18/2019	3/16/2020
58	2K830	ALA	80	5.8	5.8	2	Bridge Replacement	San Francisco Bay and the Angel Island-San Francisco Bay Estuaries Subwatershed	TBD	N	N	TBD	TBD	TBD	SWPPP	TBD	1/1/2019	5/1/2020	12/1/2020	11/1/2022
59	2K940	ALA	880	32.6	33.4	TBD	In Alameda County in the City of Oakland on I-880 PM 32.6/33.4 (Union Pacific Line MP 5.2/5.8).	TBD	TBD	N	TBD	TBD	TBD	TBD	TBD	TBD	2/2/2018	4/1/2019	10/2/2019	9/15/2020
60	4K810	ALA	80	0	0	TBD	In Alameda County at the EB80/EB580, WB580/WB80 and WB80/SB880 Connector Ramps	TBD	TBD	TBD	TBD	TBD	TBD	TBD	TBD	TBD	1/1/2019	5/1/2020	2/1/2021	11/1/2022
61	0G360	ALA		0	0	2	IMPROVE INTERCHANGE	TBD	TBD	N	TBD	TBD	TBD	TBD	TBD	TBD	4/20/2018	6/1/2019	1/2/2020	9/1/2021
62	28120	NAP				2	INTERSECTION IMPROVEMENTS	Soskol Creek, Napa River	Y	N	TBD	10	TBD	-	SWPPP	TBD	7/16/2018	8/31/2020	10/31/2021	12/15/2023
63	1G120	SCL	280	4	10	2	HIGH SPEED RAIL FRON SAN JOSE TO MERCED	TBD	TBD	TBD	TBD	TBD	TBD	TBD	TBD	TBD	12/1/2017	-	-	-
64	1G110	SF	101	0	0	2	HIGH SPEED RAIL FROM SAN FRANCISCO TO SAN JOSE	TBD	TBD	N	TBD	TBD	TBD	TBD	TBD	TBD	12/1/2017	12/1/2019	-	-
65	2G740	ALA	185			TBD	Upgrade existing curb ramps and replace existing sidewalk	San Lorenzo Creek	N	N	TBD	2.76	0	TBD	SWPPP	E	1/2/2019	7/1/2020	1/6/2021	12/31/2021

Table 6-1: District 4 Anticipated Project Development and Construction Schedule

No.	EA	Project Location					Project Description ^{1,2}	Water Bodies Within or Adjacent to Project Limits ³	Dredge and Fill Activities (Y/N/NA) ⁴	Other Regional Water Board Permits Required ⁵	Potential and Actual Impacts of Project's Discharge ⁶	Disturbed Soil Area (acres)	Area of New Impervious Surface (acres)	Percentage of New Impervious Surface to Existing Impervious Surface	Description of Construction Controls (SWPPP/WPCP/TBD) ⁷	Post-Construction Treatment Control Type, Quantity ⁸	Anticipated Project Delivery Schedule		Construction Period	
		Co.	Route	Begin PM	End PM	RB ⁹											PA&ED Date	PS&E Date	Start Date	End Date
66	4H460	SM	101	14.5	14.9	2	Interchange Improvements	San Mateo Creek	N	N		7.6	2.5	TBD	SWPPP	C	12/1/2017	12/1/2021	-	-
67	4H360	SM	101	21.4	21.6	2	Interchange for Safety Enhancements and Improve Traffic Operations of Produce Avenue and US 101.	TBD	TBD	TBD		NA	NA	NA	NA	NA	10/1/2017	2/1/2019	-	4/1/2022
68	0J540	CC	24			2	CALDECOTT TUNNEL 1, 2, 3 REHAB	San Pablo Reservoir, Temescal Creek	TBD	N	TBD	0.1	0.06	<50%	WPCP	N/A	8/15/2016	10/2/2017	1/2/2018	3/14/2022
69	0J550	ALA	84	17.2	17.2	2	Bridge scour mitigation and bridge rail upgrade.	Russian River	TBD	N	TBD	-	-	-	-	-	9/15/2018	3/16/2020	1/18/2021	1/18/2023
70	1A905	SF	1	6	6	2	Water quality improvements	Mountain Lake	TBD	TBD	TBD	TBD	TBD	TBD	TBD	TBD	3/1/2019	4/2/2020	2/10/2021	12/31/2021
71	2J730	SM	101	7.13	7.13	2	REPLACE BRIDGE	Cordilleras Creek, San Francisco Bay Lower	TBD	N	TBD	2	0.35	< 50%	SWPPP	BS, 1	6/1/2018	12/1/2019	12/7/2018	2/17/2023
72	2J760	ALA	880	27.23	27.23	2	SUB-STRUCTURE REHAB/SCOUR MITIGATION	TBD	TBD	TBD	TBD	TBD	TBD	TBD	TBD	TBD	7/21/2017	9/6/2019	12/6/2018	4/17/2021
73	2J740	SM	101	0.1	23.4	2	REPLACE BRIDGE RAIL.	San Francisco Bay-Central (303d)	Y	N	Y	0	4.08	TBD	WPCP	E	12/1/2017	6/1/2019	12/4/2019	11/20/2019
74	3J070	CC	80	10.1	13.5	2	TBD	Rodeo Creek, San Pablo Bay, Carquinez Strait	TBD	TBD	TBD	TBD	TBD	TBD	TBD	TBD	1/2/2018	7/1/2019	4/1/2020	4/1/2021
75	3J140	CC	4	0	0	2	APS SYSTEMS AND PEDESTRIAN COUNT- DOWN TIMERS	TBD	TBD	N	TBD	0.013	0	0	WPCP	E	1/2/2019	7/1/2020	12/31/2020	12/31/2021
76	4J030	SCL	101	0.8	0.8	2	Inject foundation grout, construct rock slope protection, and install drainage system.	Camadero Creek, Pajaro River, Tar Spring	N	N	TBD	0.02	0	TBD	WPCP	E	9/3/2018	8/28/2019	5/4/2020	5/3/2021
77	4J460	SON	116	11.8	12.169	TBD	Install APS and upgrade curb ramps 7 sidewalks	Alameda Creek	N	N	TBD	<1	<1	TBD	WPCP	E	8/8/2018	1/17/2024	2/28/2024	5/10/2028
78	4J490	ALA	13	6.5	7.5	2	Outer Separation Barrier	San Lorenzo Creek-Frontal San Francisco Bay Estuaries	N	N	TBD	3	TBD	TBD	WPCP	C	4/28/2017	5/4/2018	2/6/2019	2/5/2020
79	4J930	SCL	101	0	52.5	TBD	IN SANTA CALRA COUNTY, ON ROUTE 101 AT VARIOUS LOCATIONS.	TBD	TBD	TBD	TBD	TBD	TBD	TBD	TBD	TBD	7/26/2018	9/11/2019	12/13/2019	2/27/2024
80	4J890	SCL	82	19.2	26.4	TBD	Resurface the existing AC	Saratoga Creek-Frontal San Francisco Bay Estuaries	N	N	TBD	<1.0	<1.0	TBD	WPCP	E	7/27/2018	9/12/2019	12/13/2019	2/23/2024
81	4J980	ALA SCL				TBD	Stormwater Treatment BMPs	San Leandro Creek, Old Alameda and Alameda Creeks, Coyote Creek, San Francisco Bay-Central	N	N	TBD	2.6	TBD	TBD	SWPPP	Other (not needed)	7/31/2018	9/16/2019	12/18/2019	3/1/2024
82	0K130	59V04		0	0	TBD	ON SON-12-116, MRN-1-131, NAP-29 AT VAR LOCATIONS.	TBD	TBD	N	TBD	TBD	TBD	TBD	TBD	TBD	8/1/2018	9/17/2019	12/18/2019	2/28/2024
83	4J970	SF	101	2	4.2	TBD	IN SF ON HIGHWAY 101 BETWEEN PM 2.0 AND 4.2.	TBD	TBD	TBD	TBD	TBD	TBD	TBD	TBD	TBD	8/2/2018	-	-	3/5/2024
84	0K120	59V04		0	0	2	IN ALAMEDA and CONTRA COSTA COUNTIES ON VARIOUS ROUTES (Install Rectangular Rapid Flashing Beacons at ramp termini with uncontrolled pedestrian crossings)	San Joaquin River, Walnut Creek, San Ramon Creek, Coyote Creek, Alameda Creek, San Francisco Bay, San Lorenzo Creek, Perella Creek, Lake Temescal, San Pablo Creek, Wildcat Creek	N	N	TBD	2	<1 ac	<50%	WPCP	N	10/11/2018	3/21/2024	5/2/2024	7/13/2028

Table 6-1: District 4 Anticipated Project Development and Construction Schedule

No.	EA	Project Location					Project Description ^{1,2}	Water Bodies Within or Adjacent to Project Limits ³	Dredge and Fill Activities (Y/N/NA) ⁴	Other Regional Water Board Permits Required ⁵	Potential and Actual Impacts of Project's Discharge ⁶	Disturbed Soil Area (acres)	Area of New Impervious Surface (acres)	Percentage of New Impervious Surface to Existing Impervious Surface	Description of Construction Controls (SWPPP/WPCP/TBD) ⁷	Post-Construction Treatment Control Type, Quantity ⁸	Anticipated Project Delivery Schedule		Construction Period	
		Co.	Route	Begin PM	End PM	RB ⁹											PA&ED Date	PS&E Date	Start Date	End Date
85	0K240	SCL	237	7	8	2	IN SANTA CLARA COUNTY IN SAN JOSE ON EASTBOUND ROUTE 237 FROM NORTH FIRST STREET OVERCROSSING TO ZANKER ROAD OVERCROSSING	Coyote Creek, Guadalupe River	N	N	TBD	3.7	1.65	<50%	SWPPP	C	8/6/2018	6/4/2019	12/24/2019	3/7/2024
86	0K240	SCL	237	7.1	8	2	IN SANTA CLARA COUNTY IN SAN JOSE ON EASTBOUND ROUTE 237 FROM NORTH FIRST STREET OVERCROSSING TO ZANKER ROAD OVERCROSSING	Coyote Creek, Guadalupe River	N	N	TBD	3.7	1.65	<50%	SWPPP	C	8/6/2018	6/4/2019	12/24/2019	3/7/2024
87	0K490	ALA	185	0.3	6.4	2	IN ALA COUNTY ON RTE 185 FROM A ST TO ROUTE 112 (Roadway Rehabilitation)	Lorenzo Creek, Estudillo Canal, Cordelia Slough, Ulatis Creek	N	N	N	0	0	<50%	WPCP	N	10/24/2018	4/3/2024	5/15/2024	7/26/2028
88	0K510	MRN	1	11.2	11.2	2	IN MRN IN THE CITY OF STINSON BEACH ON US 1 PM 11.2(Bridge Culvert Replacement).	San Rafael Creek	N	N	N	0.05	0	<50%	WPCP	N	10/24/2018	4/3/2024	5/15/2024	7/26/2028
89	0K570	SM	1	1.12	1.12	2	In SM county, on RTE 001, at Año Nuevo, at 1.1 miles north of Santa Cruz county line (Roadway Rehabilitation).	Año Nuevo Creek	N	N	N	0.25	0.25	<50%	WPCP	N	8/23/2018	10/9/2019	6/29/2020	3/26/2024
90	0K650	59V04		0	0	TBD	IN ALAMEDA AND CONTRA COSTA COUNTIES ON VARIOUS ROUTES AT VARIOUS POST MILES.	TBD	TBD	N	TBD	TBD	TBD	TBD	TBD	TBD	11/14/2018	4/24/2024	6/5/2024	8/16/2028
91	0K670	SM	82	19.8	19.8	2	In SM county, on RTE 82, in South San Francisco City, 0.1 mile north of Francisco Drive (Roadway Rehabilitation).	San Mateo Creek, Colma Creek	N	N	N	0.25	0.25	<50%	WPCP	N	9/7/2018	10/23/2019	6/29/2020	4/10/2024
92	0K710	SCL	101	38	40	2	US 101 Zanker Road/Skyport Drive/Fourth Street project new interchange (Interchange Improvements)	Coyote Creek and Guadalupe River	N	N	N	40	30	>50%	SWPPP	C	9/14/2018	10/30/2019	2/5/2020	4/17/2024
93	1K730	SON	1	30.8	40.6	TBD	Culvert Rehabilitation	Pacific Ocean	Y	N	TBD	0.15	0.12	TBD	WPCP	C	4/3/2019	5/18/2020	8/17/2020	10/28/2024
94	1K980	SCL	280	4.5	6	TBD	In Santa Clara County, in the City of San Jose on route 280 at Winchester Blvd. On-Ramp, 0.7 mile west of Route 17.	TBD	TBD	TBD	TBD	TBD	TBD	TBD	TBD	TBD	6/28/2019	2/26/2021	6/1/2021	-
95	2K140	SCL	17	0	6.55	TBD	HEBARD WAY INTERSECTION TO MAIN STREET OVERCROSSING.	TBD	TBD	TBD	TBD	TBD	TBD	TBD	TBD	TBD	5/9/2019	1/13/2020	9/23/2020	10/5/2022
96	2K170	ALA		0	0	TBD	In Alameda County on route 77 and 880 at various locations at San Leandro OC-BR# 33-284, Tennyson Road OC-BR# 33-0236, Washington Ave. OC-BR# 33-0166 and Damon Slough (SB on-ramp) BR# 33-0142K.	TBD	TBD	TBD	TBD	TBD	TBD	TBD	TBD	TBD	5/14/2019	6/29/2020	9/28/2020	12/11/2024
97	2K190	SM	1	44.21	44.21	TBD	In san Mateo County in Pacifica on route 1 at Paloma Ave OC) Br no. 35-0187), and; in the city and county of San Francisco on Route 101 at Alemany Circle Undercrossing (SB 101 on-ramp, Br. No. 34-0064K). Alemany Circle Undercrossing (NB 101 on-ramp,	TBD	TBD	TBD	TBD	TBD	TBD	TBD	TBD	TBD	5/14/2019	6/29/2020	9/28/2020	12/11/2024

Table 6-1: District 4 Anticipated Project Development and Construction Schedule

No.	EA	Project Location					Project Description ^{1,2}	Water Bodies Within or Adjacent to Project Limits ³	Dredge and Fill Activities (Y/N/NA) ⁴	Other Regional Water Board Permits Required ⁵	Potential and Actual Impacts of Project's Discharge ⁶	Disturbed Soil Area (acres)	Area of New Impervious Surface (acres)	Percentage of New Impervious Surface to Existing Impervious Surface	Description of Construction Controls (SWPPP/WPCP/TBD) ⁷	Post-Construction Treatment Control Type, Quantity ⁸	Anticipated Project Delivery Schedule		Construction Period	
		Co.	Route	Begin PM	End PM	RB ⁹											PA&ED Date	PS&E Date	Start Date	End Date
98	2K240	MRN	101	15.57	15.57	TBD	In Marin County in San Rafael on US-101 at Miller Creek Road OC and in Sonoma County in Santa Rosa on US-101 at Todd Road OC and Baker Avenue OC.	TBD	TBD	TBD	TBD	TBD	TBD	TBD	TBD	TBD	5/24/2019	7/9/2020	10/8/2020	12/23/2024
99	2K420	NAP	128	9.2	9.2	R2	Storm Damage Restoration	Conn Creek, Lake Hennessey	Y	N	Y	0.09	0.012	TBD	WPCP	E	6/5/2019	7/20/2020	10/19/2020	1/3/2025
100	2K690	ALA	84	6.9	10.8	2	Pavement Preservation	Alameda Creek (303d)	TBD	N	TBD	0	28.36	0	WPCP	E	1/2/2019	7/1/2020	12/10/2020	12/31/2021
101	2K700	ALA	880	0	12	TBD	In Alameda County, in Fremont and Union City, from Santa Clara/Alameda County line to 0.20 mile north of Patterson Slough Bridge.	TBD	TBD	TBD	TBD	TBD	TBD	TBD	TBD	TBD	1/2/2019	7/2/2020	-	12/31/2021
102	2K940	ALA	880	32.6	33.4	TBD	In Alameda County in the City of Oakland on I-880 PM 32.6/33.4 (Union Pacific Line MP 5.2/5.8).	TBD	TBD	N	TBD	TBD	TBD	TBD	TBD	TBD	2/2/2018	4/1/2019	10/2/2019	9/15/2020
103	4K810	ALA	80	0	0	TBD	In Alameda County at the EB80/EB580, WB580/WB80 and WB80/SB880 Connector Ramps	TBD	TBD	TBD	TBD	TBD	TBD	TBD	TBD	TBD	1/1/2019	5/1/2020	2/1/2021	11/1/2022
104	0G660	SOL	84	12.1	12.4	5	Bridge Replacement	Miner Slough	Y	N	TBD	3.5	1.75	TBD	SWPPP	TBD	7/29/2016	5/1/2018	3/19/2019	12/31/2021
105	26470	SCL	101	40.5	41.5	2	Interchange Reconstruction	Guadalupe River	N	N	TBD	23.3 (w/in CT ROW)	6.9	52	SWPPP	BIOSWL, 21	3/11/2016	8/3/2017	8/16/2018	5/13/2020
106	3A860	CC	680			2	High Occupancy Vehicle (HOV) Direct Access Ramps	TBD	Y	N	TBD	3.25 to 3.5	0.62 to 1.67	60 to 162	SWPPP	BS (number TBD)	12/29/2016	7/1/2017	1/1/2018	3/1/2019
107	0G680	SON	121	3.4	6.5	2	WIDEN RDWY AND SHOULDERS TO STD WIDTHS AND INSTALL MEDIAN AND SHOULDER RUMBLE STRIPS	Matadero Creek	TBD	N	TBD	NA	NA	TBD	NA	NA	12/29/2017	12/31/2019	12/17/2020	12/31/2021
108	0A770	ALA	80	6.4	6.8	2	MODIFY INTERCHANGE.	San Francisco Bay Central	N	N	TBD	1	0.4	TBD	SWPPP	Other-tree wells, 2	10/1/2017	8/28/2019	10/1/2019	1/1/2022
109	1G910	ALA	185	3.25	9.75	2	Reinstall and/or upgrade existing curb ramps and sidewalks to ADA standards.	TBD	TBD	N	TBD	TBD	TBD	TBD	WPCP	E	3/1/2018	5/1/2019	2/28/2020	12/31/2020
110	1G990	ALA	580	30.4	30.4	TBD	TBD	TBD	TBD	TBD	TBD	TBD	TBD	TBD	TBD	TBD	12/1/2017	12/3/2018	-	-
111	2G460	ALA	13	10.79	12.06	2	Upgrade curb ramps	Cerrito Creek-Frontal San Francisco Bay Estuaries	N	N	TBD	0.46	0	TBD	WPCP	E	7/11/2018	10/11/2019	4/24/2020	3/1/2021
112	3G180	SCL	17	6.9	9.1	2	INSTALL/UPGRADE CURB RAMPS AND PEDESTRIAN FACILITIES	TBD	TBD	TBD	TBD	0.1	TBD	TBD	WPCP	E	5/31/2018	7/17/2019	6/10/2020	5/18/2022
113	26980	CC	242			2	Pavement rehabilitation.	Suisun	N	N	TBD	0	0	TBD	WPCP	TBD	7/1/2017	7/1/2019	3/1/2020	3/1/2022
114	0A537	SOL				2	CONSTRUCT THE CONNECTOR FROM I-80 WESTBOUND TO I-680 SOUTHBOUND.	Green Valley Creek, Dan Wilson Creek	Y	N	TBD	TBD	TBD	TBD	SWPPP	TBD	10/25/2012	12/1/2017	7/20/2018	6/1/2020
115	3G630	SCL	9	4.8	5	2	Replace bridge.	Bonjetti Creek, Saratoga Creek	Y	N	TBD	3.5	2	TBD	SWPPP	CNTBOX LNGTBE	2/19/2018	8/13/2019	10/19/2020	10/19/2022
116	3G980	SCL	82	8.6	25.8	2	INTEGRATE BUS RAPID TRANSIT (BRT) SUPPORT ELEMENTS ON STATE ROUTE 82	Los Gatos Creek, Guadalupe River, Saratoga Creek, Stevens Creek, Permanente Creek, Matadero Creek, San Francisquito Creek	N	N	TBD	TBD	TBD	TBD	TBD	TBD	12/31/2018	10/2/2017	6/14/2018	7/2/2019
117	0G642	MRN	1	28.5	28.51	2	Replace bridge.	Lagunitas Creek	Y	N	TBD	1.5	0.18	TBD	SWPPP	TBD	1/25/2018	6/30/2019	2/7/2020	12/31/2021
118	0G642	MRN	1	28.5	28.51	TBD	Replace bridge.	Lagunitas Creek	Y	N	TBD	1.5	0.18	TBD	SWPPP	TBD	1/25/2018	6/30/2019	2/7/2020	12/31/2021

Table 6-1: District 4 Anticipated Project Development and Construction Schedule

No.	EA	Project Location					Project Description ^{1,2}	Water Bodies Within or Adjacent to Project Limits ³	Dredge and Fill Activities (Y/N/NA) ⁴	Other Regional Water Board Permits Required ⁵	Potential and Actual Impacts of Project's Discharge ⁶	Disturbed Soil Area (acres)	Area of New Impervious Surface (acres)	Percentage of New Impervious Surface to Existing Impervious Surface	Description of Construction Controls (SWPPP/WPCP/TBD) ⁷	Post-Construction Treatment Control Type, Quantity ⁸	Anticipated Project Delivery Schedule		Construction Period	
		Co.	Route	Begin PM	End PM	RB ⁹											PA&ED Date	PS&E Date	Start Date	End Date
119	OJ470	59V04		0	0	2	Crosswalk safety enhancements.	San Francisco Bay	N	N	N	0.01	0	0	WPCP	NA	10/30/2017	10/4/2018	4/23/2019	10/31/2019
120	OJ530	ALA	880	11.3	12.3	2	In Fremont, from 0.5 mile south to 0.5 mile north of Patterson Slough Bridge No. 33-0250 (PM 11.8). Bridge rehabilitation.	Alameda Creek	N	N	TBD	<1	<1	< 50%	WPCP	NA	5/22/2019	4/20/2020	2/10/2021	2/10/2022
121	OJ560	SCL	101	0.03	50.3	2	"In various cities, on Routes 101 and 237 at various locations. Bridge rail upgrade at 8 locations. (G13 Contingency Project)"	Pajaro River, Llagas Creek, Coyote Creek, Silver Creek, Guadalupe River, Saratoga Creek, Stevens Creek, Permanente Creek	N	N	N	<1	<1	<50%	WPCP	NA	9/14/2018	3/16/2020	12/21/2020	10/15/2021
122	OJ600	SOL	80	1.1	34.5	2	In and near Vallejo, Dixon and Vacaville, at Route 80/29 Separation Bridge No. 23-0087, McCune Creek Bridge No. 23-0084 L/R and Horse Creek Bridge No. 23-0077 L. Bridge preventative maintenance.	McCune Creek, Horse Creek, Carquinez Strait	Y	N	N1	0.5	0	<50%	WPCP	N	8/31/2018	4/30/2020	11/2/2020	12/31/2021
123	OJ620	ALA	680	12.4	21.9	2	In and near Pleasanton and Dublin, from north of Route 84 to Alcosta Boulevard. Roadway rehabilitation.	Alameda Creek	N	N	TBD	35	32	<50%	SWPPP	C	10/2/2018	2/28/2020	3/30/2021	10/2/2023
124	OJ720	SM	280	7	7.7	2	Near Redwood City, north of Edgewood Road; also, on Route 84 from Hildebrand Road to north of La Honda Creek Bridge (PM 9.4/10.0) ((Stormwater Mitigation)).	San Gregorio Creek-Frontal Pacific Ocean	N	N	N	2	0	<50%	SWPPP	N	7/30/2018	8/1/2019	4/1/2020	10/1/2020
125	23536	SM				2	Interchange Improvement	Redwood Creek	N	N	Y	20.9 - 28.9 (w/in CT ROW)	14.8 - 22.9 (w/in CT ROW)	106 - 185 (w/in CT ROW)	SWPPP	BIOSTP/BIOSWL preferred	12/19/2016	12/1/2018	-	8/1/2023
126	OJ800	SCL	152	21.8	35.16	2	Near Gilroy, from east of Dunne Street/San Felipe Road to the Merced County line. Place median barrier (Median Barrier Placement).	South Fork Creek, Canyon Creek, Pacheco Creek	N	N	TBD	32.2	>1 ac	<50%	SWPPP	C	2/1/2019	3/11/2020	3/1/2021	7/19/2023
127	0C930	SM	1	0	10.6	2	Near Pescadero, from Santa Cruz County Line to south of Bean Hollow Road.	San Francisco Bay	N	N	TBD	0	0	TBD	WPCP	NONE	7/2/2018	5/1/2019	1/15/2020	7/1/2021
128	0C930	SM	1	0	10.6	2	Near Pescadero, from Santa Cruz County Line to south of Bean Hollow Road.	San Francisco Bay	N	N	TBD	0	0	TBD	WPCP	NONE	7/2/2018	5/1/2019	1/15/2020	7/1/2021
129	1J360	SON	12	34.2	41	2	Pavement rehabilitation	Sonoma Creek	N	N	N	0	0	0	WPCP	E	3/1/2018	9/5/2019	6/4/2020	6/3/2021
130	1A905	SF	1	6	6	2	Water quality improvements	Mountain Lake	TBD	TBD	TBD	TBD	TBD	TBD	TBD	TBD	3/1/2019	4/2/2020	2/10/2021	12/31/2021
131	1J970	SCL	17	2.8	13.94	TBD	In and near Los Gatos, Campbell and San Jose, from Hebard Way to Route 280.	TBD	TBD	N	TBD	TBD	TBD	TBD	TBD	TBD	7/2/2018	7/5/2019	7/15/2020	5/3/2022
132	2J580	CC	24	4.3	4.3	TBD	IN CONTRA COSTA COUNTY, ON ROUTE 024, AT THE EASTBOUND ROUTE 24 OFF RAMP TO SOUTHBOUND ACCALANES ROAD.	TBD	TBD	TBD	TBD	TBD	TBD	TBD	TBD	TBD	6/28/2019	3/2/2020	4/19/2010	6/17/2014
133	2J770	NAP				2; 5S	In and near Saint Helena and Calistoga, at Mill Creek Bridge No. 21-0056, Garnett Creek Branch Bridge No. 21-0111, and No Name Creek Bridge No. 21-0100.	Garnett, Mill, "No Name", and Capell Creeks	Y	N	N	<1	0	0	WPCP	E	9/1/2018	2/1/2020	10/30/2020	12/1/2021
134	2J830	ALA	80	1.9	4	2	Upgrade/replace Transportation Management System elements.	Mountain House Creek	N	N	N	0.1	0.02	1%	WPCP	NONE	3/1/2019	4/1/2020	12/24/2020	12/24/2021

Table 6-1: District 4 Anticipated Project Development and Construction Schedule

No.	EA	Project Location					Project Description ^{1,2}	Water Bodies Within or Adjacent to Project Limits ³	Dredge and Fill Activities (Y/N/NA) ⁴	Other Regional Water Board Permits Required ⁵	Potential and Actual Impacts of Project's Discharge ⁶	Disturbed Soil Area (acres)	Area of New Impervious Surface (acres)	Percentage of New Impervious Surface to Existing Impervious Surface	Description of Construction Controls (SWPPP/WPCP/TBD) ⁷	Post-Construction Treatment Control Type, Quantity ⁸	Anticipated Project Delivery Schedule		Construction Period	
		Co.	Route	Begin PM	End PM	RB ⁹											PA&ED Date	PS&E Date	Start Date	End Date
135	2J720	CC	580	1.17	1.17	2	Bridge rehabilitation.	Stege Creek, San Francisco Bay Central	Y	N	Y	0.2	0.31	>50%	WPCP	C	11/30/2018	1/3/2020	10/12/2020	6/1/2021
136	2J780	SCL		0	0	TBD	In various cities on various routes at Saratoga Creek Bridge, Carnadero Creek Bridge, San Francisco Creek Bridge, San Tomas Aquino Creek Bridge, and Bodfish Creek Bridge. Bridge preventative maintenance.	TBD	TBD	TBD	TBD	TBD	TBD	TBD	TBD	TBD	10/1/2018	3/1/2020	12/22/2020	10/1/2021
137	2J880	NAP	29	38.9	38.9	TBD	IN NAP COUNTY ROUTE 29 AT GARNETT CREEK BR. #21-0005.	TBD	TBD	TBD	TBD	TBD	TBD	TBD	TBD	TBD	9/1/2018	2/1/2020	10/30/2020	12/1/2021
138	2J800	SF	101	4.12		2	Paint superstructure steel members.	San Francisco Bay Central	N	N	N	0.1	0	0	WPCP	NONE	12/1/2018	9/1/2020	8/1/2021	10/1/2024
139	3J050	ALA	580	30.81	46.46	2	Install/upgrade Traffic Management System	Corte Madera Creek	TBD	N	TBD	0.2	0.1	0.10%	WPCP	E	10/1/2018	4/15/2020	11/16/2020	11/15/2021
140	3J060	SM	101	16.5	23	2	Pavement Preservation (CAPM).	SF BAY	TBD	N	TBD	0	0	0	WPCP	E	4/2/2018	10/1/2019	4/29/2020	5/1/2021
141	2J840	SON	116	0	0	TBD	IN VAR COUNTIES, ON VAR ROUTES AND AT VAR LOCATIONS.	TBD	TBD	TBD	TBD	TBD	TBD	TBD	TBD	TBD	9/30/2018	9/1/2019	5/15/2020	12/30/2020
142	4J040	SOL	680	1.9	2	2	REPAIR SLIPOUTS ON THE CUT SLOPE ALONG SOUTHBOUND RTE 680.	Suisun Marsh Wetlands	TBD	TBD	TBD	TBD	TBD	TBD	TBD	TBD	3/1/2018	4/16/2019	7/17/2019	9/27/2023
143	4J210	NAP	121	18.59	18.59	TBD	Bridge Substructure Rehabilitation	Capell Creek, Lake Berryessa	TBD	N	TBD	<1	TBD	TBD	WPCP	TBD	9/1/2018	2/1/2020	10/30/2020	12/1/2021
144	4J390	SF	101	0	4.24	TBD	drainage improvements, overlay the existing asphalt concrete pavement with OGFC pavement, and groove the existing PCC pavement	San Mateo Creek-frontal San Francisco Bay Estuary	N	N	TBD	61	59.62	TBD	SWPPP	E	10/1/2018	2/1/2020	10/1/2020	10/1/2021
145	4J420	MRN	101	0.2	0.2	2	Install Flood Gates and Modify Box Culvert	Arroyo Corte Madera Del Presidio, Corte Madera Creek, Coyote Creek	N	N	TBD	0.08	0	TBD	WPCP	E	5/21/2018	7/8/2019	10/7/2019	12/19/2023
146	4J730	ALA	880	20.9	20.9	TBD	IN ALA COUNTY I-880 AND RTE 238 CONNECTOR.	TBD	TBD	TBD	TBD	TBD	TBD	TBD	TBD	TBD	7/2/2018	2/3/2020	11/2/2020	12/31/2021
147	4J750	ALA	84	0.73	3.06	TBD	Outer Separation Barrier	Don Edwards San Francisco Bay National Wildlife Refuge, San Francisco Bay-Lower and -South	N	N	TBD	3.6	3.4	TBD	SWPPP	C	9/30/2018	2/24/2020	12/7/2020	4/1/2022
148	0K030	SCL	680	1.4	2.3	TBD	In San Jose on Route 680 at six locations between Capitol Expressway and Mueller Ave.	TBD	TBD	N	TBD	TBD	TBD	TBD	TBD	TBD	9/6/2017	12/11/2018	5/31/2019	10/15/2020
149	4G872	SOL	80	14.55	14.55	2	SCOUR MITIGATION	TBD	Y	N	Y	TBD	TBD	TBD	TBD	TBD	8/29/2018	2/3/2020	7/13/2020	3/4/2021
150	1K280	SCL	101			2	Widening Blossom Hill Overcrossing.	Coyote Creek	N	N	N	7	3.2	TBD	SWPPP	BIOSWL, TBD	12/20/2017			5/15/2019
151	1K670	ALA	980	1.2	1.2	TBD	Alameda County on State Route 980 at Post Mile 1.2.	TBD	TBD	TBD	TBD	TBD	TBD	TBD	TBD	TBD	12/3/2018	11/1/2019	11/1/2020	8/29/2025
152	1K720	SON	1	1	28.7	TBD	In Sonoma County on route 1 from 0.6 miles south of Middle Road to Jewell Gulch.	TBD	TBD	TBD	TBD	TBD	TBD	TBD	TBD	TBD	4/3/2019	5/18/2020	8/17/2020	10/28/2024
153	1K730	SON	1	30.8	40.6	TBD	Culvert Rehabilitation	Pacific Ocean	Y	N	TBD	0.15	0.12	TBD	WPCP	C	4/3/2019	5/18/2020	8/17/2020	10/28/2024
154	1K750	SON	1	41.2	54.6	TBD	Drainage System Restoration	Pacific Ocean	Y	N	TBD	0.14	0.14	TBD	WPCP	C	4/3/2019	5/18/2020	8/17/2020	10/28/2024
155	1K760	SON	1	45.41	45.41	TBD	Drainage System Restoration	Pacific Ocean	N	N	TBD	0.01	0.01	TBD	WPCP	C	4/3/2019	5/18/2020	8/17/2020	10/28/2024

Table 6-1: District 4 Anticipated Project Development and Construction Schedule

No.	EA	Project Location					Project Description ^{1,2}	Water Bodies Within or Adjacent to Project Limits ³	Dredge and Fill Activities (Y/N/NA) ⁴	Other Regional Water Board Permits Required ⁵	Potential and Actual Impacts of Project's Discharge ⁶	Disturbed Soil Area (acres)	Area of New Impervious Surface (acres)	Percentage of New Impervious Surface to Existing Impervious Surface	Description of Construction Controls (SWPPP/WPCP/TBD) ⁷	Post-Construction Treatment Control Type, Quantity ⁸	Anticipated Project Delivery Schedule		Construction Period	
		Co.	Route	Begin PM	End PM	RB ⁹											PA&ED Date	PS&E Date	Start Date	End Date
156	2K140	SCL	17	0	6.55	TBD	HEBARD WAY INTERSECTION TO MAIN STREET OVERCROSSING.	TBD	TBD	TBD	TBD	TBD	TBD	TBD	TBD	TBD	5/9/2019	1/13/2020	9/23/2020	10/5/2022
157	2K830	ALA	80	5.8	5.8	2	Bridge Replacement	San Francisco Bay and the Angel Island-San Francisco Bay Estuaries Subwatershed	TBD	N	N	TBD	TBD	TBD	SWPPP	TBD	1/1/2019	5/1/2020	12/1/2020	11/1/2022
158	4K810	ALA	80	0	0	TBD	In Alameda County at the EB80/EB580, WB580/WB80 and WB80/SB880 Connector Ramps	TBD	TBD	TBD	TBD	TBD	TBD	TBD	TBD	TBD	1/1/2019	5/1/2020	2/1/2021	11/1/2022
159	16030	ALA	84	13	13.6	2	Replace Bridge	Alameda Creek	Y	N	Y	3.5 - 4.2	1.29 - 1.74	TBD	SWPPP	TBD	6/30/2017	1/1/2019	12/8/2019	12/1/2022
160	26470	SCL	101	40.5	41.5	2	Interchange Reconstruction	Guadalupe River	N	N	TBD	23.3 (w/in CT ROW)	6.9	52	SWPPP	BIOSWL, 21	3/11/2016	8/3/2017	8/16/2018	5/13/2020
161	27830	ALA	185	0.9	3.8	2	IN ALAMEDA COUNTY ON ROUTE 185 NEAR THE CITY OF HAYWARD FROM 162ND STREET TO RUFUS COURT	TBD	TBD	N	TBD	TBD	TBD	TBD	TBD	TBD	9/30/2012	6/20/2019	12/20/2019	12/21/2020
162	0G390	CC	680	2.9	2.9	2	CONSTRUCT AN ADDITIONAL LANE ALONG NB DIAGONAL OFF-RAMP AND NB DIAGONAL ON-RAMP	NA	N	N	TBD	NA	NA	TBD	WPCP	NA	10/15/2014	12/29/2017	8/1/2017	7/23/2018
163	2640F	SON	101	3.7	7.5	2	Segment C HOV Widening Project	Petaluma River	Y	N	TBD	46.8	35.69	TBD	SWPPP	BIOSTP 7, BIOSWL 26	10/29/2009	9/7/2017	4/1/2018	12/31/2020
164	0A770	ALA	80	6.4	6.8	2	MODIFY INTERCHANGE.	San Francisco Bay Central	N	N	TBD	1	0.4	TBD	SWPPP	Other-tree wells, 2	10/1/2017	8/28/2019	10/1/2019	1/1/2022
165	1G840	SON	116	26.6	26.9	1	Reconstruct and upgrade existing ramps and drainage	Mark West Creek	N	N	N	N/A	N/A	N/A	WCPC	E	9/30/2015	6/8/2017	2/1/2018	12/31/2018
166	2G000	ALA	185	3.64	3.86	TBD	IN ALA COUNTY ON ROUTE 185, EAST 14TH STREET/HESPERIAN BOULEVARD/ 150TH AVENUE STREET.	TBD	TBD	TBD	TBD	TBD	TBD	TBD	TBD	TBD	12/30/2017	12/30/2018	9/30/2019	8/30/2020
167	2G460	ALA	13	10.79	12.06	2	Upgrade curb ramps	Cerrito Creek-Frontal San Francisco Bay Estuaries	N	N	TBD	0.46	0	TBD	WPCP	E	7/11/2018	10/11/2019	4/24/2020	3/1/2021
168	2G660	ALA	13	9.75	10.79	2	Upgrade Curb Ramps	Cerrito Creek-Frontal San Francisco Bay Estuaries	N	N	TBD	0.3	0	TBD	WPCP	E	2/14/2018	5/6/2019	12/2/2019	10/1/2020
169	2G730	ALA SCL				TBD	Install and/or upgrade existing curb ramps and pedestrian facilities to ADA standards.	San Francisco Bay, Cerrito Creek, Codornices Creek, Stevens Creek, Calabazas Creek	N	N	TBD	0.35	0.35	TBD	WPCP	E	10/2/2017	4/1/2019	12/23/2019	11/2/2020
170	2G690	MRN	1			2	ADA Standard Upgrade	Coyote Creek, Richardson Bay	N	N	TBD	0.1	0.1	TBD	WPCP	E	6/16/2017	8/31/2018	5/1/2019	12/27/2019
171	3G180	SCL	17	6.9	9.1	2	INSTALL/UPGRADE CURB RAMPS AND PEDESTRIAN FACILITIES	TBD	TBD	TBD	TBD	0.1	TBD	TBD	WPCP	E	5/31/2018	7/17/2019	6/10/2020	5/18/2022
172	3G444	SF	80	5.9	7.7	TBD	SFOBB West Span.	TBD	TBD	TBD	TBD	TBD	TBD	TBD	TBD	TBD	6/18/2013	4/1/2018	9/1/2018	6/1/2019
173	3G301	CC	680	23.2	24.9	2	REPLACE FOG HORNS, RADAR BEACONS AND NAVIGATIONAL LIGHTS AT VARIOUS TOLL BRIDGES	TBD	N	N	TBD	0	TBD	TBD	WPCP	E	12/17/2013	6/24/2016	5/14/2018	5/13/2019
174	3G900	SON	116	46	46.7	2	ROADWAY IMPROVEMENT	Sonoma Creek, Yellow Creek	Y	N	TBD	9.9	4.9	35	SWPPP	C	6/15/2017	10/31/2018	8/15/2019	10/30/2020

Table 6-1: District 4 Anticipated Project Development and Construction Schedule

No.	EA	Project Location					Project Description ^{1,2}	Water Bodies Within or Adjacent to Project Limits ³	Dredge and Fill Activities (Y/N/NA) ⁴	Other Regional Water Board Permits Required ⁵	Potential and Actual Impacts of Project's Discharge ⁶	Disturbed Soil Area (acres)	Area of New Impervious Surface (acres)	Percentage of New Impervious Surface to Existing Impervious Surface	Description of Construction Controls (SWPPP/WPCP/TBD) ⁷	Post-Construction Treatment Control Type, Quantity ⁸	Anticipated Project Delivery Schedule		Construction Period	
		Co.	Route	Begin PM	End PM	RB ⁹											PA&ED Date	PS&E Date	Start Date	End Date
175	3G980	SCL	82	8.6	25.8	2	INTEGRATE BUS RAPID TRANSIT (BRT) SUPPORT ELEMENTS ON STATE ROUTE 82	Los Gatos Creek, Guadalupe River, Saratoga Creek, Stevens Creek, Permanente Creek, Matadero Creek, San Francisquito Creek	N	N	TBD	TBD	TBD	TBD	TBD	TBD	12/31/2018	10/2/2017	6/14/2018	7/2/2019
176	1J560	SM / SCL	101			2	Congestion Relief, Increase throughput	San Mateo Creek and San Francisco Bay and Various (VAR)	N	N	N	139	12.2	TBD	SWPPP	C	11/1/2017	11/1/2019	6/1/2020	9/1/2022
177	4H610	CC	680		25	TBD	Convert existing HOV Lanes to Express Lanes	Stone Valley Creek, Miranda Creek, San Ramon Creek, Tice Creek, Walnut Creek, Grayson Creek, Vine Hill Creek, Peyton Slough	N	N	TBD	10.53	3.92	TBD	SWPPP	C	1/23/2017	4/10/2017	7/3/2017	12/28/2018
178	0J100	SON	101	9	9	2	Repair slide.	Petaluma River	TBD	N	TBD	TBD	TBD	TBD	TBD	TBD	6/15/2018	12/14/2018	8/30/2019	6/30/2020
179	0J520	ALA	580	8	8	2	Rehabilitate westbound structure.	Arroyo Las Pasitos	TBD	N	TBD	0.9	0.03	TBD	WPCP	E	1/15/2018	5/1/2019	2/3/2020	5/2/2022
180	0J670	59V04		0	0	2	Construct maintenance worker safety improvements.	San Francisco Bay, San Francisquito Creek,	N	N	N	3	0.3	<50%	WPCP	NONE	9/30/2017	11/30/2018	7/1/2019	7/1/2020
181	0J680	59V04		0	0	TBD	Highway worker safety improvements.	Calabazas Creek, Russian River, Sonoma Creek	N	N	N	0	0	<50%	WPCP	TBD	10/15/2017	3/20/2019	12/10/2019	6/30/2020
182	0J710	SOL	80	4.43	4.43	2	RAISE THE O/C- VERTICAL CLEARANCE AT SIX OVER-CROSSINGS TO ALLOW OVER-HEIGHT, MILITARY AND COMMERCIAL VEHICALS TO TRAVEL.	None	Y	N	Y	0.1	0	<50%	WPCP	NONE	1/1/2018	5/1/2019	6/1/2020	6/1/2021
183	0J720	SM	280	7	7.7	2	Near Redwood City, north of Edgewood Road; also, on Route 84 from Hildebrand Road to north of La Honda Creek Bridge (PM 9.4/10.0) ((Stormwater Mitigation)).	San Gregorio Creek-Frontal Pacific Ocean	N	N	N	2	0	<50%	SWPPP	N	7/30/2018	8/1/2019	4/1/2020	10/1/2020
184	2A332	ALA	84	10.8	18	TBD	Safety Improvement	Alameda Creek	Y	N	TBD	11.1	2.27	TBD	SWPPP	BIOSWL 1	8/30/2017	3/10/2019	10/27/2019	6/1/2020
185	3E602	SF	101	6.7	8.1	2	Rehabilitate pavement.	San Francisco Bay, Central	N	N	TBD	0.3	TBD	TBD	WPCP	E	3/11/2016	11/29/2017	7/1/2018	12/1/2020
186	0C930	SM	1	0	10.6	2	Near Pescadero, from Santa Cruz County Line to south of Bean Hollow Road.	San Francisco Bay	N	N	TBD	0	0	TBD	WPCP	NONE	7/2/2018	5/1/2019	1/15/2020	7/1/2021
187	0C930	SM	1	0	10.6	2	Near Pescadero, from Santa Cruz County Line to south of Bean Hollow Road.	San Francisco Bay	N	N	TBD	0	0	TBD	WPCP	NONE	7/2/2018	5/1/2019	1/15/2020	7/1/2021
188	1J600	ALA				2	Install Pedestrian Beacons	VAR	N	N	N	0.04	0	TBD	WPCP	E	9/29/2017	1/14/2019	12/2/2019	12/2/2020
189	1J990	ALA CC				2	Safety Lighting	Sausal Creek San Francisco Bay Central San Francisco Bay	N	N	Y	NA	NA	NA	WPCP	E	5/1/2018	5/1/2019	11/12/2018	7/15/2019
190	0J642	SON	101	29.3	54.2	1	Roadway rehabilitation.	Russian River	N	N	TBD	<1	<1	<50%	WPCP	N	6/30/2018	2/1/2019	11/1/2019	12/30/2021
191	0J642	SON	101	29.3		1	Roadway rehabilitation.	Russian River	N	N	TBD	<1	<1	<50%	WPCP	N	6/30/2018	2/1/2019	11/1/2019	12/30/2021
192	1A210	SON	37	2.6	2.6	2	INSTALL TRAFFICE CENSUS STATION WITH WEIGH-IN -MOTION. AND RR 300 FT PAVEMENT SECTION	San Pablo Bay Estuaries	Y	N	Y	0.1	0	-	WPCP	E	4/1/2018	4/1/2019	12/30/2019	10/30/2020
193	2J320	ALA	880	14.7	14.7	2	Install weigh-in-motion system in both directions.	San Lorenzo Creek	TBD	N	TBD	0.02	0	0	WPCP	E	6/29/2015	12/3/2018	11/29/2019	12/1/2020

Table 6-1: District 4 Anticipated Project Development and Construction Schedule

No.	EA	Project Location					Project Description ^{1,2}	Water Bodies Within or Adjacent to Project Limits ³	Dredge and Fill Activities (Y/N/NA) ⁴	Other Regional Water Board Permits Required ⁵	Potential and Actual Impacts of Project's Discharge ⁶	Disturbed Soil Area (acres)	Area of New Impervious Surface (acres)	Percentage of New Impervious Surface to Existing Impervious Surface	Description of Construction Controls (SWPPP/WPCP/TBD) ⁷	Post-Construction Treatment Control Type, Quantity ⁸	Anticipated Project Delivery Schedule		Construction Period	
		Co.	Route	Begin PM	End PM	RB ⁹											PA&ED Date	PS&E Date	Start Date	End Date
194	2J810	ALA	880	4	11.3	2	Highway worker safety improvements.	TBD	TBD	TBD	TBD	TBD	TBD	TBD	TBD	TBD	6/7/2018	5/6/2019	12/20/2019	7/2/2020
195	2J820	CC		0	0	TBD	Construct maintenance worker safety improvements	San Pablo Creek	TBD	N	TBD	0	0	TBD	WPCP	E	1/2/2018	7/26/2019	3/24/2020	11/30/2020
196	2J890	SCL	101	9	16.78	TBD	In and near Morgan Hill, from south of Masten Avenue to East Main Avenue.	TBD	TBD	TBD	TBD	TBD	TBD	TBD	TBD	TBD	8/1/2018	8/29/2019	5/1/2020	5/31/2021
197	3J060	SM	101	16.5	23	2	Pavement Preservation (CAPM).	SF BAY	TBD	N	TBD	0	0	0	WPCP	E	4/2/2018	10/1/2019	4/29/2020	5/1/2021
198	2J840	SON	116	0	0	TBD	IN VAR COUNTIES, ON VAR ROUTES AND AT VAR LOCATIONS.	TBD	TBD	TBD	TBD	TBD	TBD	TBD	TBD	TBD	9/30/2018	9/1/2019	5/15/2020	12/30/2020
199	3J110	ALA		0	0	2	Crosswalk safety enhancements.	TBD	TBD	TBD	TBD	TBD	TBD	TBD	TBD	TBD	11/1/2017	3/1/2019	12/30/2019	1/4/2021
200	4J060	SM	1	32.1	32.2	2	REPAIR BOX CULVERT REMOVE RSP AND SOIL FROM THE BOX CULVERT.	San Gregorio Creek, Pacific Ocean	Y	N		0.2	0	0	WPCP	-	3/19/2018	4/22/2019	10/23/2019	10/3/2023
201	2J750	SCL	280			2	SEISMIC RESTORATION	Saratoga Creek	TBD	N	TBD	0	0	0	WPCP	E	2/27/2018	4/11/2019	2/28/2020	1/4/2021
202	2G482	ALA	13	12.1	13.4	2	ADA Improvements	Corte Madera Creek	N	N	TBD	<1	0.03	TBD	WPCP	E	2/1/2016	5/30/2018	3/29/2019	9/27/2019
203	0K030	SCL	680	1.4	2.3	TBD	In San Jose on Route 680 at six locations between Capitol Expressway and Mueller Ave.	TBD	TBD	N	TBD	TBD	TBD	TBD	TBD	TBD	9/6/2017	12/11/2018	5/31/2019	10/15/2020
204	0K130	59V04		0	0	TBD	ON SON-12-116, MRN-1-131, NAP-29 AT VAR LOCATIONS.	TBD	TBD	N	TBD	TBD	TBD	TBD	TBD	TBD	8/1/2018	9/17/2019	12/18/2019	2/28/2024
205	1K280	SCL	101			2	Widening Blossom Hill Overcrossing.	Coyote Creek	N	N	N	7	3.2	TBD	SWPPP	BIOSWL, TBD	12/20/2017	-	-	5/15/2019
206	3G64A	NAP	29	37.03	37.03	TBD	In Calistoga at Napa River Bridge No. 21-0018.	Napa River	TBD	N	TBD	TBD	TBD	TBD	TBD	TBD	2/9/2015	4/15/2019	12/27/2019	3/31/2022
207	2K940	ALA	880	32.6	33.4	TBD	In Alameda County in the City of Oakland on I-880 PM 32.6/33.4 (Union Pacific Line MP 5.2/5.8).	TBD	TBD	N	TBD	TBD	TBD	TBD	TBD	TBD	2/2/2018	4/1/2019	10/2/2019	9/15/2020

Treatment Control Status Legend	
BMP Device Types:	
BIOSTP	Biofiltration Strips
BIOSWL	Biofiltration Swales
C	Under Consideration
CNTBOX	Gross Solids Removal Devices (Inclined Screen)
DETBAS	Detention Basins
DPPIA	Design Pollution Prevention Infiltration Area*
DWFD	Dry Weather Flow Diversion
E	Exempt
INDBAS	Infiltration Basins*
INDTRE	Infiltration Trench*
LNGTBE	Gross Solids Removal Devices (Linear Radial)
MCTT	Multi-Chambered Treatment Trains
MF-ADS	Austin Sand Filters
MF-DSF	Delaware Sand Filters
Other	Other (specify type)
SA	Stabilization Areas
TRCSND	Traction Sand Traps
WETBAS	Wet Basins

* Water quality volume infiltrates within the right of way. (When this is demonstrated for at least 90% of the WQV, other types of treatment BMPs are not considered unless there is a location-specific requirement.)

Table 6-2 lists the planned maintenance projects that will disturb soil.

Table 6-2: District 4 Anticipated Significant Road Maintenance Activities

No.	Co.	Route	Beg PM	End PM	Regional Board	Description	Water Bodies Affected ¹⁰	Other Regional Water Board Permits Required ¹¹	Potential and Actual Impacts of Project's Discharge ¹²	Disturbed Soil Area (acres)	Area of New Impervious Surface (acres)	Percentage of New Impervious Surface to Existing Impervious Surface	Description of Construction Controls (SWPPP/WPCP/TBD/NA) ¹³	Post-Construction Treatment Control Type, Quantity ¹⁴	Start Date	Completion Date
1	MRN	101	0.1	0.3	2	Shoulder backing	N/A	N/A	N/A	0.041	0	N/A	WPCP	N/A	6/1/2019	9/1/2019
2	NAP	121	0.0	4.5	2	Shoulder backing	N/A	N/A	N/A	0.630	0	N/A	WPCP	N/A	6/1/2019	9/1/2019
3	SF	1	0.0	6.9	2	Trenching for conduit placement	N/A	N/A	N/A	0.140	0	N/A	WPCP	N/A	4/1/2019	9/1/2020
4	CC	580	R3.6	R4.6	2	Erosion gully	N/A	N/A	N/A	0.100	0.1	N/A	WPCP	N/A	5/1/2019	5/5/2021
5	CC	680	R1.8	21.5	2	Erosion gully	N/A	N/A	N/A	0.100	0.1	N/A	WPCP	N/A	5/1/2019	5/5/2021
6	SOL	113	13.7	17.4	5	Culvert replacement	Cache Slough	N/A	N/A	0.010	0	N/A	WPCP	N/A	6/3/2019	6/21/2019
7	SOL	113	10.0	12.4	5	Culvert replacement	Cache Slough	N/A	N/A	0.010	0	N/A	WPCP	N/A	6/3/2019	6/21/2019
8	SOL	113	8.9	9.8	5	Culvert replacement	Cache Slough	N/A	N/A	0.010	0	N/A	WPCP	N/A	6/3/2019	6/21/2019
9	SOL	113	7.0	8.7	5	Culvert replacement	Cache Slough	N/A	N/A	0.010	0	N/A	WPCP	N/A	6/3/2019	6/21/2019

¹⁰ Receiving waters within or adjacent to maintenance activity designated as “303(d) (constituent type).” Activity adjacent to Drinking Water Reservoir or Ground Water Recharge Facilities designated as “DW.”

¹¹ Regional Water Board Permits required other than Construction General Permit, such as Clean Water Act Section 401 water quality certification, Waiver of Discharge Requirements, Dewatering Permits, Bridge Painting WDRs, etc.

¹² This information may come from the Water Quality Assessment Report prepared for each project, a Water Quality Technical Memorandum, or other document that evaluates the water quality impacts of a project.

¹³ A description of the Construction Controls is available in the project’s Storm Water Pollution Prevention Plan (SWPPP), Water Pollution Control Plan (WPCP), is To Be Determined (TBD) if the Disturbed Soil Area is unavailable, or is Not Applicable (NA) because there is no Disturbed Soil Area associated with the project.

¹⁴ Treatment Control Status identified by: device type/number of devices, exempt (“E”), or under consideration (“C”). See Treatment Control Status Legend below for device type abbreviations.

Treatment Control Status Legend	
BMP Device Types:	
BIOSTP	Biofiltration Strips
BIOSWL	Biofiltration Swales
C	Under Consideration
CNTBOX	Gross Solids Removal Devices (Inclined Screen)
DETBAS	Detention Basins
DPPIA	Design Pollution Prevention Infiltration Area*
DWFD	Dry Weather Flow Diversion
E	Exempt
INDBAS	Infiltration Basins*
INDTRE	Infiltration Trench*
LNGTBE	Gross Solids Removal Devices (Linear Radial)
MCTT	Multi-Chambered Treatment Trains
MF-ADS	Austin Sand Filters
MF-DSF	Delaware Sand Filters
Other	Other (specify type)
SA	Stabilization Areas
TRCSND	Traction Sand Traps
WETBAS	Wet Basins

* Water quality volume infiltrates within the right of way. (When this is demonstrated for at least 90% of the WQV, other types of treatment BMPs are not considered unless there is a location-specific requirement.)

This page was intentionally left blank.

Table 6-3 lists the District's planned monitoring activities.

Table 6-3: District 4 Monitoring Activities

Statewide Monitoring Program Activities	
ASBS Core Monitoring Sites	
<ul style="list-style-type: none">• District sites include the following:<ul style="list-style-type: none">◦ 5 Core Monitoring sites are proposed for monitoring	
ASBS Ocean Receiving Water and Reference Monitoring Sites	
<ul style="list-style-type: none">• District sites include the following:<ul style="list-style-type: none">◦ 1 Ocean receiving water sites and 1 Ocean Reference monitoring sites are proposed for monitoring	

This page was intentionally left blank.

7 Region-Specific Activities

Section 7 of the DWP identifies the applicable region-specific activities that District 4 has planned for the fiscal year 2019-20 to comply with Attachment V of the Conformed NPDES Permit.

North Coast Region

Activities to Address Sediment Sources within Sediment Impaired Watersheds

Caltrans will prepare an inventory of sources of excess sediment and quantify the discharge or threatened discharge in the North Coast Regional Water Quality Control Board (NC-RWQCB) per Attachment V of the NPDES Permit.

Per the attachment V in the amended Caltrans Statewide NPDES permit (SWRCB Order WQ 2014-0077-DWQ), the inventory and prioritization step is not required if the Department is implementing the requirements of Attachment IV for sediment TMDLs as the given reaches have already been prioritized within the context of statewide implementation. Per attachment IV of the amended permit, Caltrans is required to submit a plan and schedule for conducting stream crossings survey for Napa River and Sonoma Creek watershed with the TMDL Status Review Report. Caltrans complied with this requirement by submitting the workplan for the Stream Crossings Survey for Napa River and Sonoma Creek as part of the TMDL Status Review Report that was submitted in October 2015.

Riparian Vegetation Removal

TMDL activities will be implemented in accordance with Attachment IV of the Caltrans NPDES Permit. Region Specific Requirements will be implemented in accordance with Attachment V of the Caltrans NPDES Permit. Implementation of Attachments IV and V have not commenced pending ongoing negotiations between Caltrans, State Water Resources Control Board and the Regional Boards.

San Francisco Bay Region

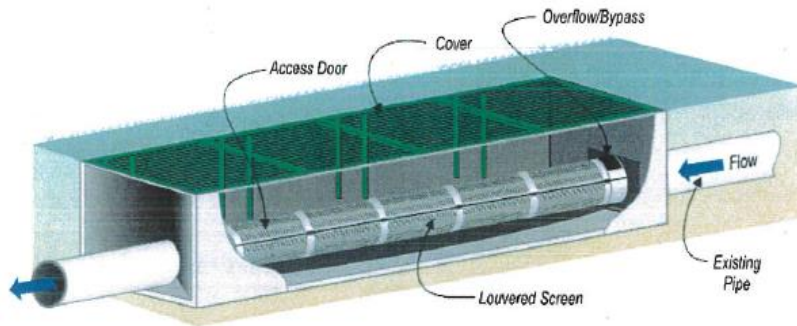
Trash Load Reduction

Caltrans conducted visual assessments of its right-of-way (ROW), approximately 20,050 acres in 2016 to identify significant trash generation areas (STGAs). Caltrans is presently working with the Regional Board to re-evaluate its ROW to identify any additional STGAs that need to be incorporated in its trash control efforts. The trash re-assessment study will be completed in November 2018.

Caltrans is working with Regional Board to develop an acceptable District 4 Trash Reduction Work Plan to implement sustainable trash control measures that ensure safety of the travelling public, our workers and minimize life-cycle costs. The Workplan will include scope and timelines for:

1. **Visual Assessments** – Identify STGAs using:
 - a. Caltrans driving visual assessment protocol
 - b. Geographic Information System (GIS) mapping tools to track and monitor program performance.
2. **Feasibility Studies** – identify opportunities for structural measure retrofits
3. **Capital Retrofit Projects:**
 - a. Program opportunities identified in Feasibility Studies
 - b. Consider structural BMP retrofits in all capital projects within Caltrans ROW
 - c. Develop partnerships with local agencies to implement structural BMP retrofits outside Caltrans ROW
 - d. Structural measures planned for consideration:

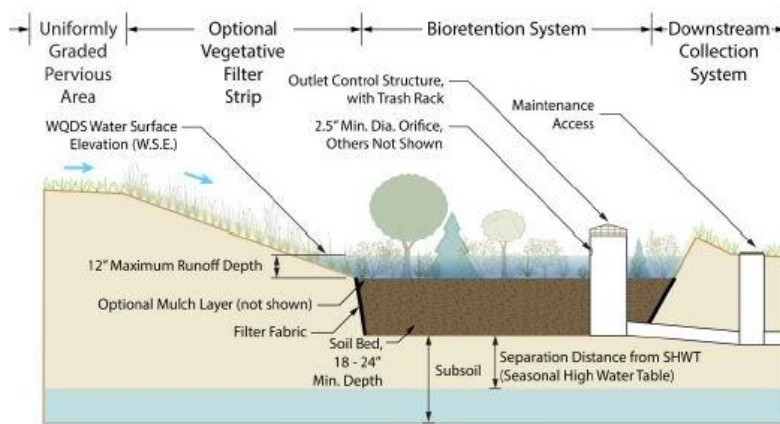
Underground



Aboveground



State Water Board Approved Multi-Benefit Devices



End of pipe



4. Enhance Maintenance Measures:

- a. Consider additional litter pickup opportunities
- b. Analyzing 5-year trash collection data to identify STGAs more efficiently.

5. Continued Public Education – “Protect Every Drop” Campaign

Caltrans plans to submit the updated District 4 Trash Reduction Work Plan to the Regional Board by June 30, 2019.

Stormwater Pump Stations

Caltrans will continue to inspect and monitor pump stations in the San Francisco Bay Region pursuant to Region Specific Requirements, Attachment V Part 2 Sections 2 b, c, d of Caltrans, NPDES Permit, Order No. 2012-0011-DWQ NPDES.

Pump stations within District 4’s jurisdiction were evaluated to determine those representing the greatest probability of discharging runoff with low dissolved oxygen (DO) to the local waterways. Data obtained from the Caltrans D4 Pump Station Inventory was used to perform this evaluation. The inventory which was completed during fiscal year 2013-2014 consisted of a total of 62 pump stations within District 4’s jurisdiction in Region 2, including locations and key characteristics such as: receiving water body, catchment areas, and wet weather storage capacity. To prioritize these pump stations for monitoring, the key characteristics and the geographic locations were considered.

Per the Caltrans Statewide NPDES permit, Attachment V- Part 2, Provision 2b, Caltrans inspected and collected DO data from 20 percent of the pump stations annually from the priority list. The inspection and monitoring results were reported in the Annual Report. Fiscal year 2018-2019 was the fifth of five years of inspection and monitoring, at which time, 100 percent of the pump stations on the priority list were inspected and monitored for DO.

This page was intentionally left blank.

8 DWP Noncompliance and Improvements

Section 8 of the DWP identifies the deviations that occurred from the prior DWP that resulted or will result in noncompliance with the Conformed NPDES Permit or SWMP. In addition, it describes the improvements that were performed in response to the incidents of noncompliance. District 4 had no DWP noncompliance incidents or improvements that were identified.

This page was intentionally left blank.