

**California Department of Transportation  
Stormwater Management Program  
District 5 Work Plan**

Fiscal Year  
**2019-2020**

CTSW-RT-18-379.06.2



California Department of Transportation  
Division of Environmental Analysis  
Stormwater Management Program  
50 Higuera St, San Luis Obispo, California 93401

<http://www.dot.ca.gov/hq/env/stormwater>

**October 1, 2018**



For individuals with sensory disabilities, this document is available in alternate formats upon request. Please call or write to the Stormwater Liaison, Caltrans Division of Environmental Analysis, MS-27, P.O. Box 942874, Sacramento, CA 94274-0001, (916) 653-8896 Voice, or dial 711 to use a relay service.

**California Department of Transportation  
District 5 Certification  
District Work Plan 2019-20**

I certify under penalty of law that this document and all attachments were prepared under my direction or supervision in accordance with a system designed to assure that qualified personnel properly gather and evaluate the information submitted. Based on my inquiry of the person or persons who manage the system, or those persons directly responsible for gathering the information, the information submitted is to the best of my knowledge and belief, true, accurate, and complete. I am aware that there are significant penalties for submitting false information, including the possibility of fine and imprisonment of knowing violations. [40 CFR 122.22(d)]



---

**Timothy M. Gubbins, District Director**

**9/21/18**  
**Date**

**District 5**

This page was intentionally left blank.

# Table of Contents

<b>1</b>	<b>Introduction .....</b>	<b>1-1</b>
<b>2</b>	<b>District Personnel and Responsibilities .....</b>	<b>2-1</b>
<b>3</b>	<b>District Facilities and Water Bodies .....</b>	<b>3-1</b>
<b>4</b>	<b>Drinking Water Reservoirs and Recharge Facilities.....</b>	<b>4-1</b>
<b>5</b>	<b>Slopes Prone to Erosion .....</b>	<b>5-1</b>
<b>6</b>	<b>Implementation.....</b>	<b>6-1</b>
<b>7</b>	<b>Region-Specific Activities .....</b>	<b>7-1</b>
<b>8</b>	<b>DWP Noncompliance and Improvements .....</b>	<b>8-1</b>

## Figures

Figure 2-1: District 5 Organizational Chart .....	2-9
Figure 5-1: District 5 2018 Areas Prone to Erosion.....	5-3

## Tables

Table 2-1: District 5 Stormwater Personnel and Responsibilities .....	2-7
Table 2-2: District 5 Signatory Authority for Key Documents.....	2-8
Table 4-1: District 5 Drinking Water Reservoirs and Recharge Facilities .....	4-1
Table 5-1: District 5 Inventory of Road Segments Prone to Erosion.....	5-1
Table 6-1: District 5 Anticipated Project Development and Construction Schedule.....	6-3
Table 6-2: District 5 Anticipated Significant Road Maintenance Activities .....	6-35
Table 6-3: District 5 Monitoring Activities .....	6-37

This page was intentionally left blank.

## General Information about the District Work Plan

The District Work Plans (DWPs) describe the organization of each California Department of Transportation (Caltrans) District's stormwater program and outline the planned stormwater activities for the upcoming fiscal year. They are prepared and submitted on October 1 each year. Since the DWP is District-specific, each Regional Water Quality Control Board (RWQCB or Regional Board) is provided a copy of the DWPs relevant to their jurisdiction.

This DWP presents information about District 5's water bodies, Best Management Practices (BMPs), and monitoring programs. It describes how the District will specifically implement the requirements of the Statewide Stormwater Management Plan (SWMP) during fiscal year 2019-20. Implementation activities will be conducted in accordance with the procedures presented in the SWMP. In addition, this DWP fulfills Provision E.3.b of the *National Pollutant Discharge Elimination System (NPDES) Statewide Storm Water Permit Waste Discharge Requirements (WDRs) for State of California Department of Transportation* (Order Number 2012-0011-DWQ, NPDES Number CAS000003, Effective July 1, 2013) (NPDES Permit). The NPDES Permit was amended by Orders WQ 2014-0006-EXEC (January 17, 2014), WQ 2014-0077-DWQ (May 20, 2014), and WQ 2015-0036-EXEC (April 7, 2015). A conformed NPDES Permit was issued on April 7, 2015 (Conformed NPDES Permit), available on the California State Water Resources Control Board's (SWRCB) website:

[http://www.waterboards.ca.gov/board\\_decisions/adopted\\_orders/water\\_quality/2012/wq2012\\_0011\\_dwq\\_conformed\\_signed.pdf](http://www.waterboards.ca.gov/board_decisions/adopted_orders/water_quality/2012/wq2012_0011_dwq_conformed_signed.pdf)

The NPDES Permit was further amended by Order WQ 2017-0026-EXEC on November 27, 2017. This permit amendment describes the primary modifications to several Areas of Special Biological Significance (ASBS) sampling locations and incorporation of compliance units crediting due to the SWRCB's adoption of the trash provisions on April 7, 2015 (effective on December 3, 2015).

The DWP's eight sections describe how the District plans to implement the stormwater program during the upcoming fiscal year. Section 1 introduces the DWP, describes its organizational structure, and identifies the key goals and commitments made by the District for the upcoming fiscal year. Section 2 describes the personnel with stormwater operations responsibilities in the District. In Section 3, the District's facilities are listed and categorized by type and location. Section 4 describes and identifies the high-risk locations where spills from the District's owned rights-of-way, roadways or facilities can discharge directly to a drinking water reservoir or ground water recharge facility. In Section 5, the District's road segments that are prone to erosion are identified. Section 6 summarizes the District's implementation activities, including projects that will be in the design and construction phases during the fiscal year, maintenance projects, and planned stormwater monitoring activities. Section 7 identifies the planned region-specific activities (if applicable) to address the requirements listed in Attachment V of the Conformed NPDES Permit. Section 8 identifies deviations that occurred from the prior DWP that resulted or will result in noncompliance with the Conformed NPDES Permit or SWMP and describes improvements performed in response to the incidents of noncompliance.

## District Goals and Commitments

The District looks forward to continuing partnerships and municipal coordination throughout the region. The District has forged successful partnerships with municipalities in San Luis Obispo County, Santa Barbara County, and Monterey County. These partnerships include the Central Coast Partners for Water Quality and the Santa Barbara County Area Municipal Separate Storm Sewer System (MS4) Managers.

Training has always been, and will continue to be, part of the District's stormwater commitments and

goals.

The District Maintenance Division will be continuing their yearly stormwater training of all Maintenance personnel. All new personnel receive stormwater training, and all Maintenance personnel receive stormwater/water pollution control training each year.

The District will continue to incorporate Green Highway Design elements into projects. Many elements of Green Highway Design, sometimes called Low Impact Development (LID), are standard design practices that are already part of the statewide design requirements. Some of these LID practices include preservation of existing vegetation, reducing to the maximum extent practicable (MEP) impermeable surfaces, use of permeable pavement where feasible, providing stable and gentle slopes that are easily re-vegetated, compost based soil modification to increase infiltration, incorporation of bioengineering techniques that reduce hard armoring of stream banks, thus providing improved habitat, and general stewardship of the environment. When selecting permanent stormwater treatment BMPs, emphasis is placed on amended soil-based vegetated systems where maximizing infiltration plus pollutant removal are combined to reduce or eliminate impacts to water quality. Caltrans' goal is to incorporate these practices from project conception, through design and construction, and to continue them during long-term maintenance of the highway system.

The District will continue to implement the Department's Enforcement Response Program, ERP. The ERP is part of Caltrans' overall stormwater quality assurance effort to ensure compliance with the MS4 Permit, the Statewide Construction General Permit, and Statewide Industrial General Permit by appropriately responding to deficiencies during inspection of construction activities, maintenance activities, maintenance facilities and third party activities on the Caltrans right-of-way. Caltrans strives to identify and resolve compliance issues in a timely manner at the lowest possible management level. Noncompliance issues are progressively escalated through the chain of command until full compliance is achieved.



## **2 District Personnel and Responsibilities**

---

Section 2 of the DWP describes positions, addresses, and telephone numbers of personnel with responsibilities for stormwater operations within the District. This section also identifies positions having signatory authority for various notifications or documents required for submittal by a District (e.g., Project Registration Documents, including Notices of Intents or NOIs).

### **Central Region NPDES Stormwater Coordinator**

The Central Region NPDES Stormwater Coordinator (CR-SWC) is the manager in charge of all stormwater activities in Districts 5, 6, and 10. The CR-SWC is responsible for establishing an effective stormwater management program and communicating, collaborating, and coordinating stormwater activities with Headquarters and other District Program Managers (Division Chiefs). The CR-SWC provides support, direction, and guidance to the District Stormwater Coordinator (DSWC). The responsibilities of the CR-SWC include:

- Coordinating Central Region operations regarding Stormwater compliance.
- Coordinating District efforts within the Central Region to achieve compliance with the NPDES permit and SWMP.
- Serving as a resource to the District Directors and Deputy District Directors on NPDES/Stormwater Quality issues.
- Serving as the ultimate signatory authority in the Region for all compliance documents (Stormwater Data Report) and commitments regarding stormwater management.
- Serving as the primary liaison and single point of contact on stormwater and waste discharge issues between the Districts and Headquarters, the State Water Resources Control Board (SWRCB), the RWQCBs, U.S. Environmental Protection Agency, and other agencies.
- Ensuring the accuracy and adequacy of the stormwater workload allocations for each fiscal year.
- Coordinating and tracking resource distributions, workloads, and projects within the Central Region.
- Providing the guidance and direction necessary to develop strategies for addressing regulations and mandates on stormwater discharges set forth by federal, state, and local regulatory agencies.
- Assisting with the preparation and review of the Rapid Stream Stability Assessment documentation for projects subject to that requirement under the 2012 NPDES Permit.
- Reconciling disputes and disagreements on policies, activities, assignments, and responsibilities regarding stormwater issues.
- Continuing to assist and support Construction and Maintenance staff with entering data into SMARTS.
- Establishing impartial and equitable decisions that benefit Caltrans in attaining the objectives of the Stormwater Management Program.
- Acting as the District Program Advisor for the 335 State Highway Operation and Protection Program (SHOPP). The 335 SHOPP Program funds projects to comply with Total Maximum Daily Load (TMDLs) and other water quality orders.
- Acting as a Duly Authorized Representative (Approved Signatory) for Caltrans MS4 Permit compliance for electronic report and data submittals in SMARTS for the Caltrans NPDES Permit.

- Assisting all responsible parties at all ERP levels to restore Caltrans Construction or State Encroachment Permit Activity or Maintenance Facility and Activities to compliance.

## **District NPDES Stormwater Coordinator**

The District NPDES Stormwater Coordinator (DSWC) is the principal person responsible for the day-to-day implementation of the NPDES permit and SWMP at the District level. Under the general direction of the CR-SWC, the DSWC is responsible for identifying issues and developing recommendations related to stormwater quality, regulated wastes, and other environmental issues that affect their respective District. The specific stormwater tasks for which the DSWC is responsible include the following:

- With the assistance of the CR-SWC, providing guidance and direction for the preparation, development, and implementation of a comprehensive District Stormwater Management Program, as described in the DWP.
- Preparing the District Annual Report and DWP in coordination with other District Stormwater functional units.
- Participating in meetings and coordinating activities with local Municipal MS4 coalitions.
- Assisting the District and Headquarters functional units in prioritizing, monitoring, tracking, and evaluating stormwater resources, activities, and operations.
- Preparing monthly Stormwater reports for submittal to HQ, for Caltrans NPDES Permit and Construction compliance tracking purposes.
- Representing the District at the statewide Stormwater Advisory Team (SWATs) identified in the SWMP.
- Monitoring and evaluating the stormwater activities and procedures of municipalities, developers, and other agencies.
- Working as leader and chairperson of the District Stormwater Functional Team Committee.
- Assisting in the determination and evaluation of stormwater impacts during California Environmental Quality Act and/or National Environmental Policy Act (CEQA/NEPA) screening.
- Evaluating and recommending permanent control and treatment measures to address project stormwater impacts.
- Assisting in the identification of costs related to water pollution control, non-stormwater discharges, and waste management in program documents.
- Assisting in the development of new specifications, details, and guidance materials related to non-stormwater discharges and waste management.
- Assisting in the preparation of contract specifications and estimates to address development of SWPPPs/WPCPs.
- Preparing the Infiltration Reports using the T-1 Infiltration Tool to document compliance with project's post construction run-off requirements (hydromodification), as required.
- Preparing the Project Risk Level Determination for SWPPP projects as required by the CGP and as necessary.
- Assisting with the preparation and review of the Rapid Stream Stability Assessment documentation for projects subject to that requirement under the Caltrans NPDES Permit (Order 2012-011-DWQ).

- Assisting in the preparation of the contract Project Specifications and Estimates (PS&E) requiring permanent stormwater control measures to improve or minimize water quality impacts.
- Assisting Construction Resident Engineers, with project registration documents (PRDs), navigating through SMARTS, and obtaining coverage under the CGP (the Notice of Intent).
- Assisting the District and Headquarters with tracking and incorporation of BMPs to comply with Attachment IV of the Caltrans NPDES Permit (TMDL Compliance Units).
- Participating in the Construction to Maintenance 90% walkthrough and handoff for projects incorporating permanent storm water treatment facilities Construction Policy Bulletin (CPB) 13-1.
- Acting as a Duly Authorized Representative (Approved Signatory) for Caltrans MS4 Permit compliance for electronic report and data submittals in SMARTS for the Caltrans NPDES Permit.

Assisting all responsible parties at all ERP levels to restore Caltrans Construction or State Encroachment Permit Activity or Maintenance Facility and Activities to compliance.

### **Environmental Water Quality Specialist**

The Environmental Division provides oversight and coordination activities on water quality issues throughout the life of the project from the Project Initiation Document phase through the Operation and Maintenance phase. In order to enhance project delivery and increase efficiency, the Environmental Water Quality Specialist (EWQS) will consult with the NPDES/Stormwater Branch on project activities that have a direct relationship to the Caltrans NPDES Permit, potential enforcement actions and stormwater quality issues. The EWQS will prepare or provide review and comment on the following issues:

- Water Quality section of the Environmental Scoping document; and
- Water Quality Assessment Reports to be included in environmental documents.

### **Maintenance Stormwater Coordinator**

The Maintenance Stormwater Coordinator (MSWC) serves as the conduit for information between the Deputy District Director of Maintenance, Headquarters Maintenance Program, and the Maintenance field offices and has the following responsibilities:

- Communicating with the Deputy District Director of Maintenance and Maintenance field personnel regarding the proper implementation of maintenance related sections of the SWMP and the DWP.
- Reporting all Stormwater-related maintenance activities to the Maintenance Manager II.
- Coordinating Stormwater training for maintenance staff.
- Overseeing inspection of maintenance facilities and operations, both in-house and with HQ Stormwater representatives, relative to Caltrans NPDES Permit compliance.
- Managing the District's Maintenance Stormwater budget and purchasing activity.
- Serving as Contract Manager for all Maintenance Stormwater-related services contracted through outside vendors.
- Participating in the constructability process culminating in a 90% BMP walkthrough with Construction staff and instructing field personnel on proper maintenance of these new devices in accordance with the Maintenance Staff Guide.

- Updating the Maintenance portion of the DWP, Facility Business Plans, FPPPs, and compiling information for the Annual Reports, as well as the SWMP.
- Serving as the delegated signatory authority on District Stormwater documents, specifically the Stormwater Data Report.
- Participating in the Maintenance MSWAT as defined in the SWMP.
- Conducting slope stabilization inspections as defined in the SWMP.
- Providing input for the DWP and Annual Report.
- Assisting all responsible parties at all ERP levels to restore Caltrans' Maintenance activities to compliance when deficiencies are observed.

### **Construction Stormwater Coordinator**

The CSWC provides technical assistance to Resident Engineers relating to the Caltrans Statewide NPDES Permit and Caltrans Stormwater Guidance Handbooks, under the direction of the Construction Division Chief and has the following responsibilities:

- Caltrans' compliance with the construction stormwater requirements of the Caltrans NPDES Permit, the General Construction Permit, and Caltrans Stormwater Manuals. This is accomplished by coordinating with project staff during the Pre-Job meeting, reviewing stormwater submittals, and periodic review of construction sites as a representative of the District Construction Division Chief.
- The CSWC also reviews a project's Construction Compliance Evaluation Plan (CCEP), reviews CCEP Action Plans (if required), and coordinates the exchange of construction-related information between Headquarters Water Quality, Headquarters Construction, District and Regional Stormwater/NPDES Units as required. This includes assisting all responsible parties at all ERP levels to restore Caltrans' Construction activities to compliance.

Other specific tasks for which the CSWC coordinates with other Caltrans units include:

- Serving as the focal point of contact with the District NPDES Stormwater Coordinators for all construction stormwater issues during the construction phase.
- Identifying and coordinating stormwater training for Construction staff.
- Working with the Central Region NPDES/Stormwater Unit, District NPDES Coordinator and various Project Engineers to review Stormwater Data Reports and ensure that project plans and specifications identify and adequately fund stormwater needs for each project.
- Tracking critical compliance milestones that occur before and during the course of construction.
- Assisting with final project closeout inspections for completion of NPDES/Stormwater components.
- Participating in the Construction to Maintenance 90% walkthrough and handoff for projects incorporating permanent stormwater treatment facilities per Construction Policy Bulletin (CPB) 13-1.
- Assisting the Resident Engineer in the submittal of the Notice of Termination for SWPPP projects.
- As requested, reviewing SWPPP/WPCP submittals.
- Submitting reports as requested to the District or Regional NPDES Coordinator.

- Reviewing Caltrans and oversight SWPPP projects and coordinate with the Construction Division Chief on project compliance matters.
- Assisting Resident Engineers with reporting Notices of Potential Incidents to the District NPDES Coordinator.
- Assisting Engineers with Illicit Connection/Illegal Discharge (IC/ID) Reports for Construction to the District NPDES Coordinator and other units (Hazardous Waste Coordinator), as needed.
- Representing Construction in the District SWAT meetings.
- Providing input for the Annual Report.
- Participating in the Construction SWAT defined in the SWMP.
- Ensuring that all construction site-related enforcement actions or corrections requested by the Regional Boards are promptly implemented and documented.

This position also serves as the primary conduit for information during the construction phase between the District, Headquarters Construction, and construction field staff. In addition, the CSWC supports the design related functional units in determining specific project needs and evaluating the water pollution control measures in the field.

### **Central Region Right-of-Way (ROW) Coordinator**

The Central Region Right-of-Way (ROW) Stormwater Coordinator for the Stormwater Management Committee is responsible for:

- Attending all Stormwater Functional Team meetings to report on ROW activities.
- Ensuring that stormwater training is available to ROW staff with property inspection responsibilities.
- Ensuring that regular property inspections include stormwater inspections.
- Documenting the results of inspections and corrective actions.
- Preparing a summary of completed stormwater property inspections for use in Annual Reports.
- Disseminating information and answering questions regarding Caltrans stormwater policy to all ROW staff involved in stormwater inspections.
- Notifying the DSWC of discharges or situations that appear to be in violation of the Caltrans NPDES Permit, SWMP, or DWP.
- Reporting instances where ROW may conduct construction activities that require the development of a SWPPP and related notification.

### **Engineering Services (Hydraulics) Representative**

The Engineering Services (Hydraulics) Representative (HR) is a member of the Functional Stormwater Committee responsible for providing information on permanent control measures, except those related to erosion control, which are being planned, designed, and implemented in projects. The HR ensures that the management and staff of the Hydraulics Branch are knowledgeable about the DWP, water pollution control efforts, and the requirements for minimizing or preventing pollutants from being present in discharges. The HR ensures that the design processes used by the Hydraulics Branch are consistent with the DWP and the SWMP, especially those processes related to the evaluation, selection, and design of permanent control and treatment control measures. The HR assists Hydraulics staff with preparation and review of the Rapid Stream Stability Assessment documentation for projects subject to that requirement

under the new Caltrans NPDES Permit (Order 2012-011-DWQ).

### **Public Affairs Coordinator**

The Public Information Officer (PIO) is a member of the Functional Stormwater Committee responsible for maintaining an effective public outreach information program as specified in this DWP and any elements of the SWMP that apply to the District. The PIO is directly responsible for the following:

- Developing and distributing Public Service Announcements regarding stormwater issues.
- Ensuring that stormwater information is available at public events, such as county fairs, for which Caltrans may be a participant.
- Coordinating Public Outreach via the Caltrans Protect Every Drop campaign-ProtectEveryDrop.com

### **Encroachment Permits Coordinator**

The Encroachment Permits Stormwater Coordinator (Permits Coordinator) is a member of the Stormwater Functional Team responsible for ensuring that the District's Office of Permits complies with the Caltrans NPDES Permit, SWMP, and DWP. The Office of Permits is responsible for issuing permits to local agencies, private parties, utility companies, and others (i.e., film production companies, special events, etc.) that desire to encroach onto Caltrans' ROW for construction, maintenance, or other activities consistent with their needs. The Permits Coordinator ensures that all permits issued comply with the appropriate Caltrans NPDES Permit in a manner consistent with the Maintenance, Construction, and Design requirements. The Permits Coordinator tracks encroachment projects at all ERP levels.

### **District Landscape Architect**

The District's Landscape Architecture Office facilitates incorporating water pollution and erosion control recommendations into the planning, design, and construction for all projects in the District. In addition, the District Landscape Architect provides field support to Construction, Maintenance, and Encroachment Permits when requested.

The specific stormwater tasks for which the District Landscape Architect is responsible include the following:

- Determining and evaluating stormwater impacts during CEQA/NEPA screening.
- Evaluating and recommending permanent control and treatment control measures to address a project's stormwater impacts.
- Identifying costs related to water pollution and erosion control in program documents.
- Developing new specifications, details, and guidance materials related to erosion and sediment control.
- Preparing PS&E contracts to address erosion and sediment controls for projects.
- Preparing or assisting in the preparation of the PS&E contract requiring permanent control and treatment control measures to improve or minimize water quality impacts on projects.
- Preparing or assisting in the preparation of the PS&E contract with regards to bio-engineering features to improve or minimize water quality impacts on projects.
- Ensuring that locations where soil containing lead is reused are not susceptible to erosion and stabilized as a part of project design.

- When requested, assisting the District's Office of Permits in evaluating water quality impacts and the requirements of encroachment permit applications.
- Conducting studies to improve water quality objectives on highway planting projects.
- Assisting in the development of training programs, especially programs for Landscape Architecture staff.
- Irrigation system design and preparing documents to ensure compliance with the Model Water Efficient Landscape Ordinance.

The District Landscape Architect is a liaison with the Headquarters Landscape Architecture Program to develop, submit, review, and obtain approval for all specifications and details related to erosion and sediment control. The District Landscape Architect also coordinates with Headquarters' Design Program to obtain approval or concurrence on water pollution control specifications related to erosion and sediment control. Furthermore, the District Landscape Architect must approve slope designs steeper than 4:1 in order to ensure compliance with regulations addressing stormwater pollution contained in the federal Clean Water Act (CWA).

Table 2-1 lists staff members responsible for implementing the Stormwater Management Program.

***Table 2-1: District 5 Stormwater Personnel and Responsibilities***

<b>Staff Name</b>	<b>Title</b>	<b>Phone No.</b>	<b>E-mail</b>	<b>Responsibility</b>
Timothy M Gubbins	District Director and Legally Responsible Person (LRP)	(805) 549-3127	tim.gubbins@dot.ca.gov	Certify Project Registration Documents for coverage under the CGP. Manages ERP Level 3.
Timothy J. Campbell	Delegated LRP	(805) 549-3247	tim.campbell@dot.ca.gov	Certify Project Registration Documents for coverage under the CGP. Manages ERP Level 2.
James Espinosa	Central Region NPDES Stormwater Coordinator	(559) 243-8007	jim.espinosa@dot.ca.gov	Primary contact for all stormwater issues. Oversees all NPDES office employees within the Central Region Districts (Districts 5, 6, and 10). Tracks encroachment permit projects at ERP levels 2 and 3.
Pete Riegelhuth	District 5 NPDES Stormwater Coordinator	(805) 549-3375	pete.riegelhuth@dot.ca.gov	Primary contact for all District 5 stormwater issues. Tracks encroachment permit projects at ERP levels 2 and 3.
Zach Coldwell	District 5 Construction Stormwater Coordinator. Approved Signatory and Data Submitter for CGP coverage	(805) 549-3244	zach.coldwell@dot.ca.gov	Responsibility covers Construction related stormwater related issues. Submit and manage data on SMARTS for CGP coverage purposes. Coordinates ERP responses for Construction.
Jay Karl	District 5 Maintenance Stormwater Coordinator	(805) 549-3836	juniper.karl@dot.ca.gov	Responsibility covers Maintenance stormwater related issues. Coordinates ERP responses for Maintenance.
Bryan Parker	District 5 Encroachment Permits Stormwater Coordinator	(805) 549-3123	bryan.parker@dot.ca.gov	Responsibility covers Encroachment permit related stormwater issues. Coordinates ERP responses for encroachment permit projects.

Table 2-2 lists individuals authorized to sign the documents, reports, and other information submitted by the District to either the SWRCB or the RWQCB(s). These individuals/positions may delegate authorization to their staff to sign various documents and reports required for implementation of the Stormwater Program. It also includes delegation of signatory authority for key Conformed NPDES Permit and SWMP required documents.

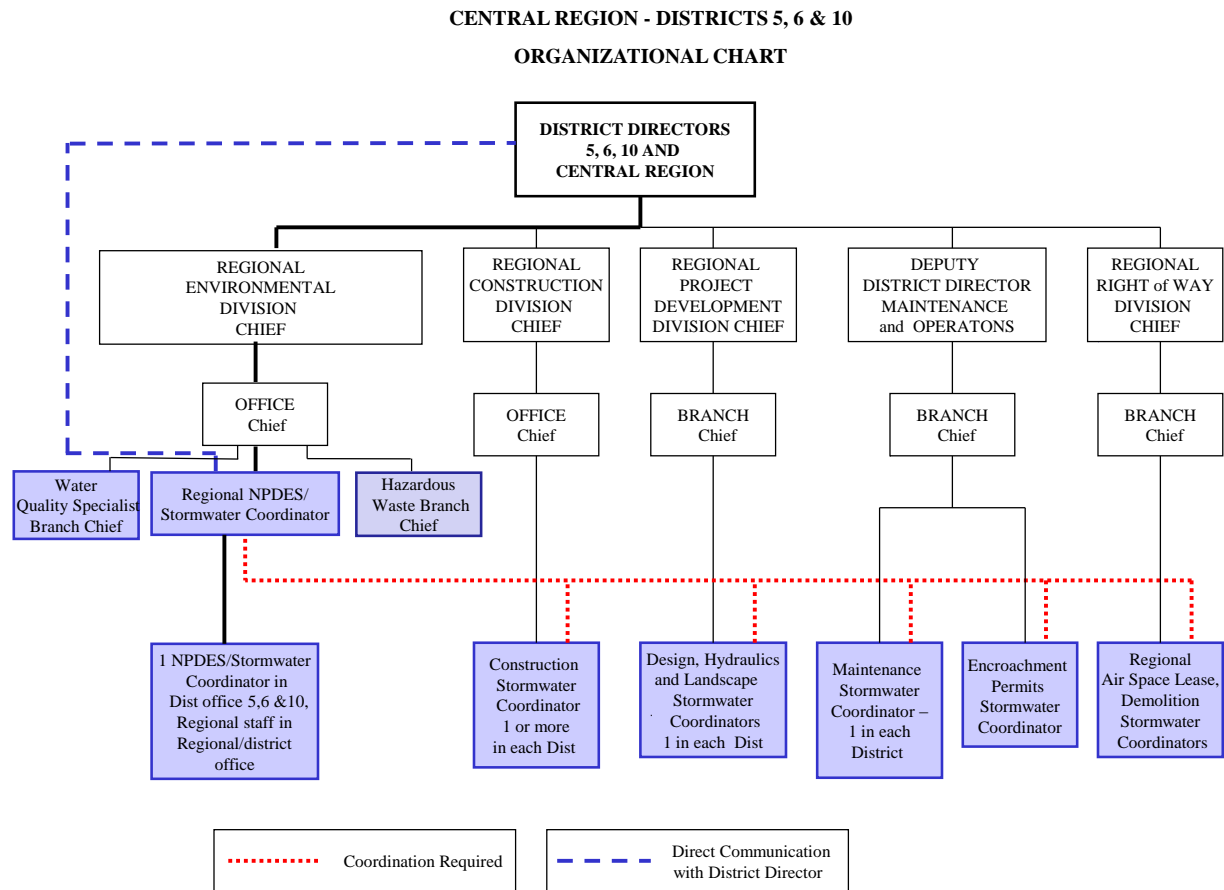
***Table 2-2: District 5 Signatory Authority for Key Documents***

<b>Position or Individual</b>	<b>Phone No.</b>	<b>E-mail</b>	<b>Documents Authorized for Signatures</b>
Timothy M Gubbins - District Director	(805) 549-3127	tim.gubbins@dot.ca.gov	All District Documents
Central Region NPDES SWC	(559) 243-8007	jim.espinosa@dot.ca.gov	All District Documents except District Work Plan
Pete Riegelhuth - District NPDES SWC	(805) 549-3375	pete.riegelhuth@dot.ca.gov	As delegated by the Central Region NPDES SWC
Jay Karl - Maintenance SWC/Hazardous Waste Coordinator	(805) 549-3836	juniper.karl@dot.ca.gov	Notice and Report of Non-Compliance, Discharge or Threat of Discharge Notification, Report of Illicit Connection/Discharge (IC/ID), Notice of Soil Reuse with Aerially Deposited Lead (ADL), Facility Pollution Prevention Plans (FPPP), and Stormwater Data Report (SWDR)
Resident Engineer	Various	various	SWPPPs, WPCPs, Project Registration Documents (PRDs), NOCC/NOT/NOI, Notice and Report of Non-Compliance, Discharge or Threat of Discharge Notification, and Report of IC/ID
Scott Dowlan - District Landscape Architect	(805) 549-4750	scott.dowlan@dot.ca.gov	Stormwater Data Report (SWDR)

Figure 2-1 shows an organizational chart describing key persons with responsibilities for stormwater operations within the District.



**Figure 2-1: District 5 Organizational Chart**



This page was intentionally left blank.

### **3 District Facilities and Water Bodies**

---

Section 3 of the DWP identifies maintenance stations (including crew functions and street addresses), vista points, commercial vehicle enforcement areas, roadside rest areas, park and ride facilities, toll road and bridge plazas, equipment shops, and other Caltrans facilities. Facility Pollution Prevention Plans (FPPPs) are prepared and implemented at Maintenance facilities within the District's boundaries, such as maintenance stations, material storage facilities, and equipment shops. To comply with Department of Homeland Security policy, the table and map identifying these facilities is not available to the public. For more information, contact Caltrans' Office of Emergency Management or Division of Environmental Analysis.

This page was intentionally left blank.

## 4 Drinking Water Reservoirs and Recharge Facilities

Section 4 of the DWP describes and identifies the high-risk areas, which are locations where spills or other releases from District-owned rights-of-way, roadways, or facilities may discharge directly to municipal or domestic water supply reservoirs or ground water percolation facilities. Projects that potentially drain to these high-risk areas consider project features that enhance spill response.

Drinking water reservoirs and recharge facilities are areas such as locations where spills from District-owned ROWs or facilities can discharge directly to municipal or domestic water supply reservoirs or ground water percolation facilities. To generate the list of municipal, domestic water supply reservoirs, and ground water percolation facilities, the District first contacted known public and private water supply providers. From the information received, the District determined which facilities were susceptible to a direct spill from a District activity or facility. This determination was based on proximity between the water body and the District's facility, use characteristics of the facility, and the probable spill response time.

When planning projects within these defined areas, District 5 considers project design features for aiding in the prevention of accidental spills that could impact the area; these features are typically commensurate with safety improvements for reducing vehicle accidents. Examples of these features may include, but are not limited to, median barrier, guardrail, signalization, and vehicle restrictions. Features considered for improving spill response time typically include elongated drainage paths, call boxes, signage, or video surveillance.

A list of drinking water reservoirs and recharge facilities within District 5 is presented in Table 4-1.

*Table 4-1: District 5 Drinking Water Reservoirs and Recharge Facilities*

Road Segment/ Facility	County	Regional Board	Drinking Water Reservoir or Recharge Facility Area	Description	Comments
SB-154 PM 10-20	SB	3	Lake Cachuma	Built by the U.S. Bureau of Reclamation in 1953 Lake Cachuma provides about 85 percent of the water for the 250,000 residents and 12,000 acres of agriculture along the South Coast of Santa Barbara County, including the cities of Santa Barbara, Montecito, Carpinteria, Goleta, and Summerland.	Route 154 has a low volume of truck traffic. It is mainly used by passenger vehicles. Stormwater discharges to Lake Cachuma are not free-fall discharges into the reservoir, but they follow vegetated drainage courses before reaching any surface water. In the early 1980s, legislation was passed that prohibits trucks from transporting any hazardous materials or hazardous waste along Hwy 154 near the reservoir.

This page was intentionally left blank.

## 5 Slopes Prone to Erosion

Section 5 of the DWP identifies the road segments within District 5 that have slopes which are prone to erosion and sediment discharge. The road segments that are located in sensitive watersheds, or where there is an existing or potential threat to water quality, will be prioritized for implementing appropriate controls to the maximum extent practicable. In each Annual Report, the status of stabilization activities where applicable will be reported. Table 5-1 is District 5's inventory of vulnerable road segments where erosion occurs and stabilization may be required, or where rock cut slopes are located and rock falls have occurred.

*Table 5-1: District 5 Inventory of Road Segments Prone to Erosion*

Road Segment	County	Regional Board	Watershed	Scheduled Stabilization Date
Route 1 PM 0 – 66.8	Monterey	Central Coast Region 3	Santa Lucia, Estero Bay	TBD
Route 198 PM 13 – 25.69	Monterey	Central Coast Region 3	Salinas	TBD
Route 101 PM 44.8 – 45.5	Santa Barbara	Central Coast Region 3	South Coast	TBD
Route 154 PM 25 – 31	Santa Barbara	Central Coast Region 3	South Coast	TBD
Route 25 PM 13 – 14	San Benito	Central Coast Region 3	Salinas	TBD
Route 25 PM 28	San Benito	Central Coast Region 3	Pajaro River	TBD
Route 9 PM 3.68 – 22.12	Santa Cruz	Central Coast Region 3	Big Basin	TBD
Route 129 PM 4.75 – 8.5	Santa Cruz	Central Coast Region 3	Pajaro River	TBD
Route 152 PM 4 – 8.2	Santa Cruz	Central Coast Region 3	Pajaro River	TBD
Route 236 PM 6.7 – 6.85	Santa Cruz	Central Coast Region 3	Big Basin	TBD
Route 1 PM 71.999 – 73.2	San Luis Obispo	Central Coast Region 3	Estero Bay	TBD
Route 41 PM 1 – 36	San Luis Obispo	Central Coast Region 3	Estero Bay, Estrella River, Salinas	TBD
Route 46 PM 58 – 59	San Luis Obispo	Central Coast Region 3	Estrella River	TBD
Route 101 PM 31 – 34	San Luis Obispo	Central Coast Region 3	Estero Bay	TBD
Route 229 PM 0 – 9.16	San Luis Obispo	Central Coast Region 3	Salinas	TBD

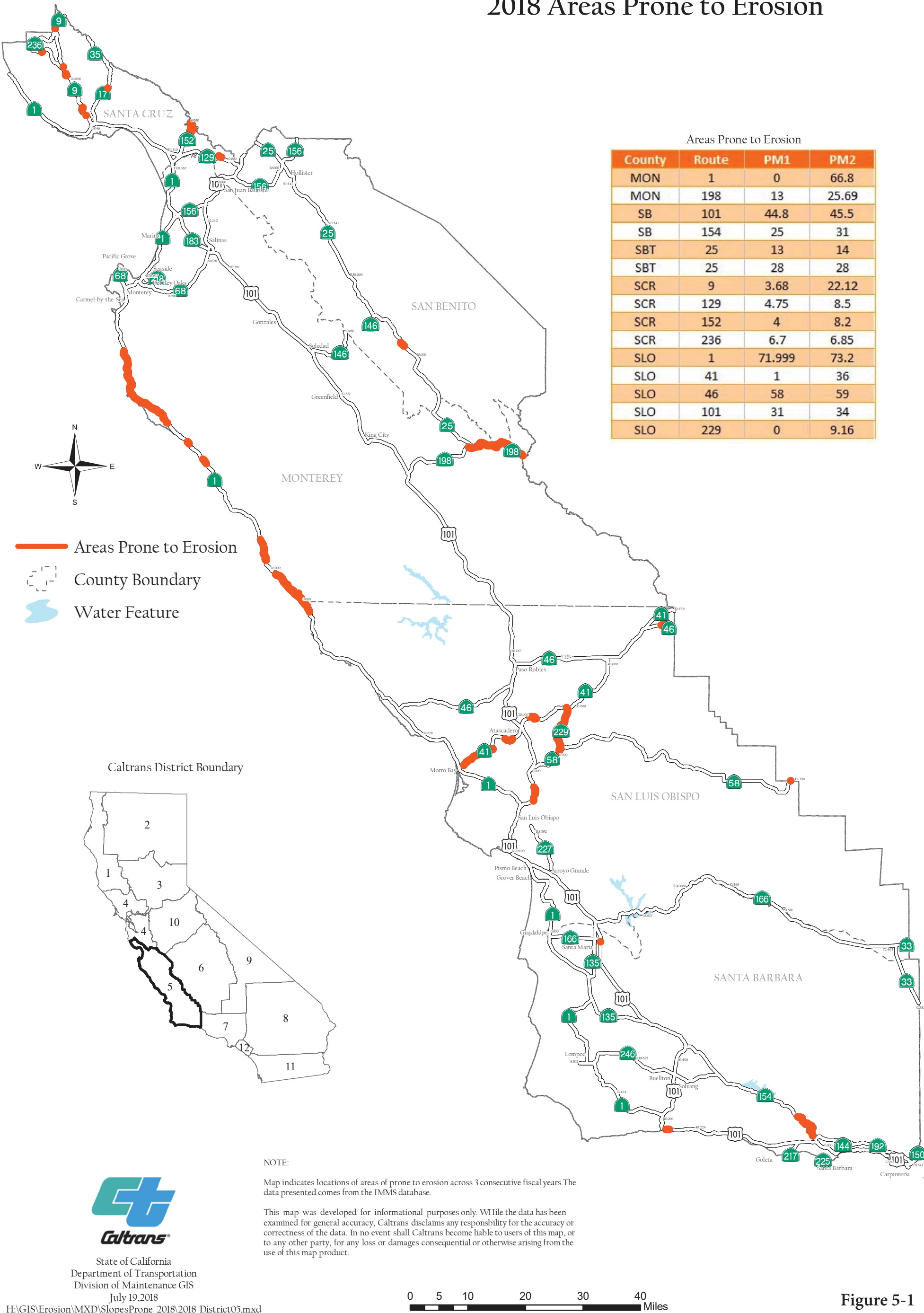
Figure 5-1 is a map showing California State Highway System areas that required maintenance within District 5 in 2018, including rock cut slopes, landslides, and moderate soil erosion.

This page was intentionally left blank.



# District 5

## California State Highway System 2018 Areas Prone to Erosion



This page was intentionally left blank.

## 6 Implementation

---

Section 6 of the DWP identifies the specific projects in which work is planned during the fiscal year within the Project Approval/Environmental Document (PA/ED), Plans, Specifications, and Estimates (PS&E), and Construction development phases. The anticipated schedule of construction and maintenance projects is subject to change. These projects are limited to those meeting any of the following criteria:

1. All projects that require soil disturbing activities
2. Adjacent to a Drinking Water or Ground Water Recharge Facility, as described in Section 4 of the DWP
3. A supplemental environmental project
4. Additional projects per agreement between the District and local RWQCB

Projects listed in Table 6-1 include (where applicable):

1. Location (county, route and post mile limits)
2. Project number (expense authorization)
3. Basic Project Description
4. Disturbed soil area
5. Presence of receiving waters within or adjacent to project limits, with special designation for 303(d) listed water bodies (adopted)
6. Drinking Water Reservoir or Ground Water Recharge Facility within or adjacent to project (as identified in Section 4 of the DWP)
7. Projected milestone dates of PA/ED, PS&E, begin Construction, and end Construction
8. Description of Construction Controls
9. Post-Construction Treatment Controls (types and quantities)
10. Dredge and fill (CWA-401) activities within the project
11. Other Regional Water Control Board Permits Required
12. Potential and Actual Impacts of Project's Discharge
13. Area of New Impervious Surface
14. Percentage of New Impervious Surface to Existing Impervious Surface

The updated lists of projects meeting these criteria will also be provided to the RWQCB annually on October 1st. Furthermore, this section identifies planned maintenance projects with soil disturbance. Information associated with the project includes location, affected water body, and area of disturbance. In addition, this section also describes the planned stormwater monitoring activities within the District; however, these activities may be conducted jointly with other Districts and HQ. Consequently, the information contained in a DWP may be repeated in another DWP.

This page was intentionally left blank.

Table 6-1: District 5 Anticipated Project Development and Construction Schedule

No.	EA	Project Location					Project Description <sup>1,2</sup>	Water Bodies Within or Adjacent to Project Limits <sup>3</sup>	Dredge and Fill Activities (Y/N/NA) <sup>4</sup>	Other Regional Water Board Permits Required <sup>5</sup>	Potential and Actual Impacts of Project's Discharge <sup>6</sup>	Disturbed Soil Area (acres)	Area of New Impervious Surface (acres)	Percentage of New Impervious Surface to Existing Impervious Surface	Description of Construction Controls (SWPPP/WPCP/TBD) <sup>7</sup>	Post-Construction Treatment Control Type, Quantity <sup>8</sup>	Anticipated Project Delivery Schedule		Construction Period	
		Co.	Route	Begin PM	End PM	RB <sup>9</sup>											PA&ED Date	PS&E Date	Start Date	End Date
1	05-0161H	MON	101	R91.2	99.2	3	PIP LANDSCAPE MITIGATION - LANDSCAPE MITIGATION-IN MONTEREY COUNTY, IN AND NEAR PRUNEDALE AT VARIOUS LOCATIONS, FROM 0.2 MILES NORTH OF LITTLE BEAR CREEK UNDERCROSSING TO 0.3 MILES NORTH OF ECHO VALLEY ROAD.	San Miguel Cr, Prunedale Cr, Vierra Cr, Pesante Canyon Cr, Little Bear Cr, Jarvis Cr, Espinosa Lake Cr	N	N/A	No long term impacts anticipated	0.10	0.00	0.00	WPCP	E	3/22/06	3/23/06	4/26/17	2/1/22
2	05-0A050	SB	1	15.6	15.6	3	SALSIPUEDES CREEK BRIDGE SCOUR MITIGATION - BRIDGE REPLACEMENT-ON ROUTE 1 IN SANTA BARBARA COUNTY NEAR LOMPOC AT THE SALSIPUEDES CREEK BRIDGE (NO. 51-0095)	Salsipuedes Creek, San Ynez River	Y	401	No long term impacts anticipated	5.00	0.00	0.00	SWPPP	E	11/2/15	4/2/18	11/19/18	10/3/20
3	05-0A090_	MON	156	1.10	2.10	3	Castroville Overhead - REPLACE BRIDGE RAILING REPLACEMENT CASTROVILLE OH REPLACEMENT - ON ROUTE 156 IN MONTEREY COUNTY BETWEEN THE ROUTE 183/156 SEPARATION (PM R1.1) AND CASTROVILLE BOULEVARD (PM R2.1)	Tembadero Slough 303(d), Moro Coho Slough	N	N/A	No long term impacts anticipated	0.94	0.37	TBD	SWPPP	E	9/2/14	8/2/19	5/27/20	7/8/21
4	05-0C640	SB	246	R12.3	R16.7	3	ROUTE 246 PASSING LANES - PASSING LANES AND OPERATIONAL IMPROVEMENTS-ON ROUTE 246 IN SANTA BARBARA COUNTY NEAR LOMPOC, FROM CEBADA CANYON ROAD TO HAPGOOD ROAD	Santa Rosa Creek, Santa Ynez River 303(d)	Y	401	No long term impacts anticipated	51.10	9.30	43.00	SWPPP	DPPIA-13	6/16/10	9/24/14	3/26/15	5/18/18

<sup>1</sup> Supplemental Environmental Projects designated as “SEP.”  
<sup>2</sup> Projects adjacent to Drinking Water Reservoirs or Ground Water Recharge Facilities are noted (DW) and (GW), respectively.  
<sup>3</sup> Water bodies with designation for 303(d) designation are noted in parentheses.  
<sup>4</sup> If yes, a 401 permit will be required for this project. NA = Not Available at this time.  
<sup>5</sup> Regional Water Board Permits required other than Construction General Permit and Clean Water Act Section 401 water quality certification, such as Waiver of Discharge Requirements, Dewatering Permits, Bridge Painting WDRs, etc.  
<sup>6</sup> This information may come from the Water Quality Assessment Report prepared for each project, a Water Quality Technical Memorandum, or other document that evaluates the water quality impacts of a project.  
<sup>7</sup> A description of the Construction Controls is available in the project’s Storm Water Pollution Prevention Plan (SWPPP), Water Pollution Control Plan (WPCP), or is To Be Determined (TBD) if the Disturbed Soil Area is unavailable.  
<sup>8</sup> Treatment Control Status identified by: device type/number of devices, exempt (“E”), or under consideration (“C”). See Treatment Control Status Legend below for device type abbreviations.  
<sup>9</sup> Regional Board

**Table 6-1: District 5 Anticipated Project Development and Construction Schedule**

No.	EA	Project Location					Project Description <sup>1,2</sup>	Water Bodies Within or Adjacent to Project Limits <sup>3</sup>	Dredge and Fill Activities (Y/N/NA) <sup>4</sup>	Other Regional Water Board Permits Required <sup>5</sup>	Potential and Actual Impacts of Project's Discharge <sup>6</sup>	Disturbed Soil Area (acres)	Area of New Impervious Surface (acres)	Percentage of New Impervious Surface to Existing Impervious Surface	Description of Construction Controls (SWPPP/WPCP/TBD) <sup>7</sup>	Post-Construction Treatment Control Type, Quantity <sup>8</sup>	Anticipated Project Delivery Schedule		Construction Period	
		Co.	Route	Begin PM	End PM	RB <sup>9</sup>											PA&ED Date	PS&E Date	Start Date	End Date
5	05-0C641	SB	246	R13.6	R16.1	3	246 PASSING LANES LANDSCAPING - PLANTING MITIGATION-IN SANTA BARBARA COUNTY NEAR LOMPOC FROM 0.8 MILE EAST OF CEBADA CANYON ROAD TO 0.4 MILE EAST OF TULAROSA ROAD AND AT HAPGOOD ROAD (WEST).	Santa Ynez River 303(d), Santa Rita Creek	N	NA	No long term impacts anticipated	0.10	0.00	0.00	WPCP	E	6/16/10	4/23/18	8/22/18	2/11/22
6	05-0F700_	MON	68	17.40	18.00	3	SALINAS RIVER BRIDGE WIDENING - BRIDGE WIDENING - IN MONTEREY COUNTY NEAR SALINAS ON STATE ROUTE 68 FROM PM R17.7 TO PM R17.9 BETWEEN RESERVATION ROAD AND SPRECKELS BOULEVARD	Salinas River 303(d)	Y	401	No long term impacts anticipated	6.94	0.38	27.10	SWPPP	E	6/6/12	6/24/15	2/12/16	2/1/19
7	05-0F970	MON	101	62.1	63.2	3	N. SOLEDAD OH DECK REPLACEMENT - BRIDGE REPLACEMENT NORTH SOLEDAD OH REPLACEMENT - ON RTE 101 IN MONTEREY CO NEAR SOLEDAD AT THE NORTH SOLEDAD OH BRIDGE - BR NO 44-91L/R (KP 100.1/101.7)	Salinas River 303(d), Arroyo Seco River	N	N/A	No long term impacts anticipated	1.50	0.34	N/A	SWPPP	E	9/2/14	11/1/19	5/27/20	6/13/21
8	05-0G040	SLO	101	63.20	69.30	3	NORTH PASO ROBLES REHAB - HIGHWAY REHAB NORTH PASO ROBLES REHAB NORTH PASO ROBLES REHAB - IN SLO CO NEAR PASO ROBLES FRM 0.4 MILE SOUTH OF SAN MARCUS CR BR TO SLO/MON CO LINE & IN MON CO FROM SLO/MON CO LINE TO 0.25 MILE S/O E GARRISON OC (PM 63.2/R1.9)	Salinas River 303(d), San, Marcos Creek	Y	401	No long term impacts anticipated	63.60	6.50	11.00	SWPPP	DPPIA-7	9/4/13	5/6/16	12/8/16	7/31/20

**Table 6-1: District 5 Anticipated Project Development and Construction Schedule**

No.	EA	Project Location					Project Description <sup>1,2</sup>	Water Bodies Within or Adjacent to Project Limits <sup>3</sup>	Dredge and Fill Activities (Y/N/NA) <sup>4</sup>	Other Regional Water Board Permits Required <sup>5</sup>	Potential and Actual Impacts of Project's Discharge <sup>6</sup>	Disturbed Soil Area (acres)	Area of New Impervious Surface (acres)	Percentage of New Impervious Surface to Existing Impervious Surface	Description of Construction Controls (SWPPP/WPCP/TBD) <sup>7</sup>	Post-Construction Treatment Control Type, Quantity <sup>8</sup>	Anticipated Project Delivery Schedule		Construction Period	
		Co.	Route	Begin PM	End PM	RB <sup>9</sup>											PA&ED Date	PS&E Date	Start Date	End Date
9	05-OG041	SLO	101	63.5	65.2	3	NORTH PASO ROBLES MITIGATION PLANTING - MITIGATION PLANTING - IN SAN LUIS OBISPO COUNTY NEAR PASO ROBLES FROM 0.1 MILE SOUTH TO 0.1 MILE NORTH OF SAN MARCOS CREEK BRIDGE AND FROM 0.1 MILE SOUTH TO 0.2 MILE NORTH OF SOUTH SAN MIGUEL UNDERCROSSING	Salinas River 303(d), San, Marcos Creek	N	N/A	No long term impacts anticipated	0.00	0.00	0.00	WPCP	E	9/4/13	6/3/19	11/18/19	11/1/22
10	05-OG071_	SB	101	22.30	23.00	3	Goleta Drainages Landscape Mitigation - LANDSCAPE MITIGATION - IN SANTA BARBARA COUNTY IN GOLETA FROM 0.2 MILE SOUTH OF FAIRVIEW AVENUE OVERCROSSING TO 0.2 MILE NORTH OF SAN PEDRO CREEK BRIDGE	San Pedro Cr., Las Vegas Cr., San Jose Cr.	Y	401	No long term impacts anticipated	0.00	0.00	0.00	WPCP	E	2/10/12	3/16/16	4/3/18	11/17/21
11	05-0H731	SLO	101	25.5	26.3	3	LOVR LANDSCAPE - LANDSCAPE OVERSIGHT - ON RTE 101 AT LOS OSOS VALLEY ROAD (KP 41.5)	San Luis Obispo Creek 303(d), Prefumo Creek	N	N/A	No long term impacts anticipated	0.00	0.00	0.00	WPCP	E	8/17/11	2/20/18	7/12/18	12/3/18
12	05-0J200	SCR	1	31.9	35.7	3	DAVENPORT CULVERT REPLACEMENT - REPLACE CULVERTS - ON ROUTE 1 IN SANTA CRUZ COUNTY NEAR DAVENPORT AND SOUTH OF WADDELL CREEK FROM PM 31.9 TO 35.7	Pacific Ocean	N	N/A	No long term impacts anticipated	2.78	0.00	0.00	SWPPP	E	10/28/19	4/12/21	9/17/21	9/22/23
13	05-0K330	SB	101	45.5	45.5	3	GAVIOTA CULVERT REPLACEMENT - REPLACE CULVERT - ON ROUTE 101 IN SANTA BARBARA COUNTY, NEAR GAVIOTA STATE PARK AND JUST SOUTH OF GAVIOTA SAFETY ROADSIDE REST AREA	Canada del Barro Creek, Pacific Ocean	Y	401	No long term impacts anticipated	11.20	0.00	0.00	SWPPP	E	12/4/18	2/27/20	12/18/20	12/20/21
14	05-0K340	VAR	1	0	0		REHAB 7 BOX CULVERTS ON MON, SLO-1 - DRAINAGE SYSTEM RESTORATION-IN SAN LUIS OBISPO AND MONTEREY COUNTIES AT VARIOUS LOCATIONS	Alder Creek, Arroyo de los Chinos, Arroyo del Puerto, Arroyo Honda, Bald Top Creek, Soda Springs,	Y	401	No long term impacts anticipated	0.12	0.00	0.00	WPCP	E	2/9/24	3/2/26	10/8/26	3/4/27

**Table 6-1: District 5 Anticipated Project Development and Construction Schedule**

No.	EA	Project Location					Project Description <sup>1,2</sup>	Water Bodies Within or Adjacent to Project Limits <sup>3</sup>	Dredge and Fill Activities (Y/N/NA) <sup>4</sup>	Other Regional Water Board Permits Required <sup>5</sup>	Potential and Actual Impacts of Project's Discharge <sup>6</sup>	Disturbed Soil Area (acres)	Area of New Impervious Surface (acres)	Percentage of New Impervious Surface to Existing Impervious Surface	Description of Construction Controls (SWPPP/WPCP/TBD) <sup>7</sup>	Post-Construction Treatment Control Type, Quantity <sup>8</sup>	Anticipated Project Delivery Schedule		Construction Period	
		Co.	Route	Begin PM	End PM	RB <sup>9</sup>											PA&ED Date	PS&E Date	Start Date	End Date
15	05-0L721	SLO	1	32.61	32.61		TORO CREEK BRIDGE REPLACEMENT - REPLACE BRIDGE-ON ROUTE 1 IN MORRO BAY AT THE TORO CREEK BRIDGE (BR. NO. 49.68R)	Toro Creek 303(d)	Y	401	No long term impacts anticipated	0.88	0.02	0.00	WPCP	E	6/26/18	6/15/20	1/21/21	12/28/23
16	05-0L721_	SLO	1	32.61	32.61	3	TORO CREEK BRIDGE REPLACEMENT - REPLACE BRIDGE - ON ROUTE 1 IN MORRO BAY AT THE TORO CREEK BRIDGE (BR. NO. 49.68R)	Toro Creek 303(d)	Y	401	No long term impacts anticipated	0.88	0.02	TBD	WPCP	E	6/26/18	6/15/20	1/21/21	12/28/23
17	05-0L722	SLO	1	34.46	34.46	3	Old Creek Bridge replacement - WIDEN BRIDGE - ON ROUTE 1 IN SAN LUIS OBISPO COUNTY NEAR MORRO BAY AT OLD CREEK BRIDGE (BR. NO. 49.70R)	Old Creek	Y	401	No long term impacts anticipated	0.88	0.03	TBD	WPCP	E	5/15/18	6/24/20	1/14/20	11/27/23
18	05-0L723	SLO	58	3.08	3.08	3	Trout Creek Bridge replacement - REPLACE BRIDGE - IN SAN LUIS OBISPO COUNTY ON HWY 58 EAST OF SANTA MARGARITA AT TROUT CREEK BRIDGE (BR. NO. 49.91)	Trout Creek	Y	401	No long term impacts anticipated	1.02	0.00	0.00	SWPPP	E	10/13/17	1/8/20	8/12/20	4/25/23
19	05-0N120	SLO	1	18.20	72.00	3	SLO 1 CULVERT REHAB - DRAINAGE SYSTEM RESTORATION-IN SAN LUIS OBISPO COUNTY AT VARIOUS LOCATIONS FROM 0.1 MILE NORTH OF WESTMONT DRIVE TO 0.8 MILE SOUTH OF THE RAGGED POINT INN	NA	N	401	No long term impacts anticipated	0.25	0.00	0.00	WPCP	E	9/1/23	8/15/25	3/2/26	7/14/28
20	05-0N190	MON	68	4.00	18.10	3	MON 68 TRAFFIC MANAGEMENT SYSTEM - INSTALL TRAFFIC MANAGEMENT SYSTEM (TMS) ELEMENTS - ON ROUTE 68 IN MONTEREY COUNTY BETWEEN THE 1/68 NORTH JUNCTION AND SPRECKELS BOULEVARD (KP 6.4/29.1)	Salinas River Lagoon, Del Monte Lake, El Toro Lake	N	NA	No long term impacts anticipated	0.00	0.00	0.00	WPCP	E	10/13/15	3/9/17	3/5/18	2/27/19
21	05-0N200	MON	101	86.00	95.80	3	MON 101 TMS - CONSTRUCT TRANSPORTATION MANAGEMENT SYSTEM (TMS)- IN MONTEREY COUNTY IN AND NEAR SALINAS 0.4 MI NORTH OF THE AIRPORT BLVD OC TO 0.3 MI SOUTH OF THE SAN MIGUEL CANYON OC	Santa Rita Creek, Gabilan Creek, Salinas reclamation Canal, Santa Rita Creek	N	NA	No long term impacts anticipated	0.50	0.00	0.00	WPCP	E	7/16/18	4/15/19	9/16/19	3/6/20



**Table 6-1: District 5 Anticipated Project Development and Construction Schedule**

No.	EA	Project Location					Project Description <sup>1,2</sup>	Water Bodies Within or Adjacent to Project Limits <sup>3</sup>	Dredge and Fill Activities (Y/N/NA) <sup>4</sup>	Other Regional Water Board Permits Required <sup>5</sup>	Potential and Actual Impacts of Project's Discharge <sup>6</sup>	Disturbed Soil Area (acres)	Area of New Impervious Surface (acres)	Percentage of New Impervious Surface to Existing Impervious Surface	Description of Construction Controls (SWPPP/WPCP/TBD) <sup>7</sup>	Post-Construction Treatment Control Type, Quantity <sup>8</sup>	Anticipated Project Delivery Schedule		Construction Period	
		Co.	Route	Begin PM	End PM	RB <sup>9</sup>											PA&ED Date	PS&E Date	Start Date	End Date
22	05-0N220	SLO	101	31.5	59.1	3	SLO 101 N CNTY TMS - CONSTRUCT TRANSPORTATION MANAGEMENT SYSTEM (TMS) - ON ROUTE 101 IN SAN LUIS OBISPO COUNTY AT VARIOUS LOCATIONS FROM 0.3 MILE NORTH OF RESERVOIR CANYON ROAD TO 0.3 MILE NORTH OF PASO ROBLES OVERHEAD	San Luis Obispo Creek	N	NA	No long term impacts anticipated	0.00	0.00	0.00	WPCP	E	2/1/19	12/1/20	4/1/22	9/1/22
23	05-0N700	SB	101	2.00	12.30	3	South Coast 101 HOV Lanes - CONSTRUCT HOV LANES - ON ROUTE 101, FROM 0.2 MILES SOUTH OF BAILARD AVENUE IN THE CITY OF CARPINTERIA TO SYCAMORE CREEK IN THE CITY OF SANTA BARBARA (CONSTRUCT HOV LANES)	Arroyo Parida 303(d), Carpinteria Creek 303(d), Carpinteria Marsh, Garapata Creek, Toro Creek, Greenwell Creek, Oak Creek, Romero Creek, San Ysidro Creek, Santa Monica Creek, Monticito Creek, Franklin Creek 303(d), Pacific Ocean 303(d)	Y	401	No long term impacts anticipated	97.00	42.00	44.20	SWPPP	DPPIA-19	8/26/14	8/20/18	9/19/19	9/21/23
24	05-0P300_	MON	1	18.5	18.7	3	REALIGNMENT AT MILL CREEK - CONSTRUCT RETAINING WALL, MOVE HIGHWAY Laterally, OR CONSTRUCT VIADUCT - ON ROUTE 1 IN MONTEREY COUNTY, NORTH OF MILL CREEK BRIDGE NO. 44-62, BETWEEN POST MILES 18.5 AND 18.7	Mill Creek, Pacific Ocean	Y	401	No long term impacts anticipated	1.30	0.00	0.00	SWPPP	E	9/1/21	1/2/25	6/1/25	9/1/28
25	05-0Q500	MON	1	20.4	20.4	3	REPLACE CULVERT NEAR LIMEKILN CREEK - REPLACE CULVERT AND REPAIR EROSION - IN MONTEREY COUNTY NEAR LUCIA AT 0.58 MILE SOUTH OF LIMEKILN CREEK	Pacific Ocean	Y	401	No long term impacts anticipated	0.44	0.00	0.00	WPCP	E	10/1/18	10/28/19	6/1/20	9/1/21
26	05-0Q600	SCR	17	1	1.4	3	HWY 17 STORM WATER MITIGATION - STORM WATER MITIGATION - ON ROUTE 17, IN SANTA CRUZ COUNTY, IN SANTA CRUZ BETWEEN 0.74 MI NORTH ROUTE 1/17 SEPARATION AND SIMS ROAD	Carbonara Creek 303(d) TMDL, San Lorenzo 303(d) TMDL	N	N/A	No long term impacts anticipated	3.20	0.00	0.00	SWPPP	E	8/24/14	5/2/16	10/28/16	4/17/20

**Table 6-1: District 5 Anticipated Project Development and Construction Schedule**

No.	EA	Project Location					Project Description <sup>1,2</sup>	Water Bodies Within or Adjacent to Project Limits <sup>3</sup>	Dredge and Fill Activities (Y/N/NA) <sup>4</sup>	Other Regional Water Board Permits Required <sup>5</sup>	Potential and Actual Impacts of Project's Discharge <sup>6</sup>	Disturbed Soil Area (acres)	Area of New Impervious Surface (acres)	Percentage of New Impervious Surface to Existing Impervious Surface	Description of Construction Controls (SWPPP/WPCP/TBD) <sup>7</sup>	Post-Construction Treatment Control Type, Quantity <sup>8</sup>	Anticipated Project Delivery Schedule		Construction Period	
		Co.	Route	Begin PM	End PM	RB <sup>9</sup>											PA&ED Date	PS&E Date	Start Date	End Date
27	05-0Q601	SCR	17	0.7	1.38	3	HWY 17 SOURCE CONTROL LANDSCAPE SPLIT - PROPOSED LANDSCAPE SPLIT FROM 05-0Q600_ HWY 17 STORM WATER MITIGATION- ON ROUTE 17, IN SANTA CRUZ COUNTY, IN SANTA CRUZ BETWEEN 0.74 MI NORTH ROUTE 1/17 SEPARATION AND SIMS ROAD	Carbonara Creek 303(d) TMDL, San Lorenzo 303(d) TMDL	N	N/A	No long term impacts anticipated	0.00	0.00	0.00	WPCP	E	8/28/14	3/29/19	10/28/19	4/13/23
28	05-0T001	SB	154	7.8	8.3	3	154/246 Roundabout Planting - LANDSCAPE MITIGATION - IN SANTA BARBARA COUNTY NEAR SANTA YNEZ, AT AND NEAR ROUTE 246 INTERSECTION	Santa Ynez River 303(d) TMDL	N	N/A	No long term impacts anticipated	0.00	0.00	0.00	WPCP	E	11/1/11	12/29/16	9/14/17	12/30/20
29	05-0T070	SB	101	54.00	90.90	3	SB 101 Planting - INSTALL NEW NATIVE DROUGHT TOLERANT TREES, SHRUBS AND MULCHING - IN SANTA BARBARA COUNTY ON ROUTE 101 AT VARIOUS LOCATIONS ROUTE 101/1 SEPARATION NEAR LAS CRUCES TO JUNCTION ROUTE 101/135 SEPARATION	Nojoqui Creek, Santa Ynez River, Zaca Creek, San Antonio Creek, Orcutt Creek, the Bradley Channel, and the Santa Maria River	N	N/A	No long term impacts anticipated	0.00	0.00	0.00	WPCP	E	3/16/12	5/9/14	4/3/17	7/15/21
30	05-0T540	SCR	129	9.5	10.00	3	129 Realignment - CURVE REALIGNMENT - ON ROUTE 129 BETWEEN 0.4 MILE WEST OF OLD CHITTENDON ROAD AND 0.1 MILE EAST OF CHITTENDON UNDERPASS	Pajaro River 303(d) TMDL	N	N/A	No long term impacts anticipated	5.00	0.44	0.30	SWPPP	E	6/28/13	4/1/15	8/7/15	7/16/18
31	05-0T631	SB	101	45.70	46.40	3	GAVIOTA CURVE MITIGATION PLANTING - MITIGATION PLANTING-IN SANTA BARBARA COUNTY NEAR GAVIOTA FROM 0.8 MILE NORTH OF BECKSTEAD OVERCROSSING TO 0.8 MILE SOUTH OF GAVIOTA TUNNEL	Gaviota Creek and Pacific Ocean at Gaviota Beach	N	N/A	No long term impacts anticipated	0.26	0.00	0.00	WPCP	E	12/10/13	3/23/16	1/6/17	5/7/21
32	05-1A000	MON	1	58.30	59.80	3	HURRICANE PT. SAFETY UPGRADES - SHOULDER WIDENING, GUARDRAIL UPGRADES, POTENTIAL RETAINING WALL - IN MONTEREY COUNTY NORTH OF BIG SUR FROM 1 MILE SOUTH OF THE BIXBY CREEK BRIDGE TO 0.25 MILES SOUTH OF THE ROCKY CREEK BRIDGE	Bixby Creek, Pacific Ocean	N	N/A	No long term impacts anticipated	1.15	0.60	TBD	SWPPP	E	1/12/17	5/24/18	12/3/18	10/17/19

**Table 6-1: District 5 Anticipated Project Development and Construction Schedule**

No.	EA	Project Location					Project Description <sup>1,2</sup>	Water Bodies Within or Adjacent to Project Limits <sup>3</sup>	Dredge and Fill Activities (Y/N/NA) <sup>4</sup>	Other Regional Water Board Permits Required <sup>5</sup>	Potential and Actual Impacts of Project's Discharge <sup>6</sup>	Disturbed Soil Area (acres)	Area of New Impervious Surface (acres)	Percentage of New Impervious Surface to Existing Impervious Surface	Description of Construction Controls (SWPPP/WPCP/TBD) <sup>7</sup>	Post-Construction Treatment Control Type, Quantity <sup>8</sup>	Anticipated Project Delivery Schedule		Construction Period	
		Co.	Route	Begin PM	End PM	RB <sup>9</sup>											PA&ED Date	PS&E Date	Start Date	End Date
33	05-1A640	SB	101	82.10	90.90	3	SANTA MARIA PLANTING & REHAB - HIGHWAY PLANTING REHABILITATION - IN SANTA BARBARA CO ON RTE 101 FROM 0.2 MI S OF CLARK AVE OC TO THE SANTA BARBARA/SAN LUIS OBISPO CO LINE, AND ON RTE 135 FROM 0.2 MI S OF EAST CLARK AVE UC TO THE SANTA	Bradley Channel 303(d), Orcutt Creek 303(d), Santa Maria River 303(d)	N	N/A	No long term impacts anticipated	0.00	0.00	0.00	WPCP	E	10/14/22	12/1/23	6/20/24	6/19/26
34	05-1A650_	SLO	101	4.65	30.18	3	Highway Planting Rehab - HIGHWAY PLANTING REHABILITATION - IN SAN LUIS OBISPO COUNTY AT VARIOUS LOCATIONS FROM 0.2 MILE SOUTH OF TEFFT STREET OVERCROSSING TO 0.2 MILE NORTH OF AVILA ROAD UNDERCROSSING	Pismo Creek 303(d), San Luis Obispo Creek 303(d), Arroyo Grande Creek 303(d), Los Berros Creek 303(d), Nipomo Creek 303(d), Meadow Creek, Pismo Lake	N	N/A	No long term impacts anticipated	0.80	0.00	0.00	WPCP	E	10/1/12	12/15/13	TBD	TBD
35	05-1C100	SCR	1	7.50	17.40	3	SCR WORKER SAFETY - ROADSIDE SAFETY IMPROVEMENTS - IN SANTA CRUZ CO ON RTE 1 FM 0.1 MI S OF LARKIN VALLEY RD TO RTE 1/17 SEP, AND ON RTE 17 FROM 0.1 SOUTH OF 1/17 SEP TO 0.1 MI N OF SANTAS VILLAGE ROAD AT VARIOUS LOCATIONS	Aptos Creek 303(d), Valencia Creek 303(d), Soquel Creek 303(d), Arana Gulch 303(d), Branciforte Creek 303(d), Carbonara Creek 303(d), San Lorenzo River 303(d), Ord Gulch, Borregas Creek, Pot Belly Creek, Tannery Gulch, Nobel Creek, Rodeo Gulch and Arana Gulch	N	N/A	No long term impacts anticipated	2.59	0.42	0.47	WPCP	E	1/23/14	6/29/16	9/17/17	7/1/19
36	05-1C190	SB	225	1.5	1.5	3	LAS POSITAS RETAINING WALL - CONSTRUCT RETAINING WALL-ON LAS POSITAS ROAD, IN THE CITY OF SANTA BARBARA, 1.5 MILES SOUTH OF US 101 ALONG ARROYO BURRO CREEK	Arroyo Burro Creek 303(d), Pacific Ocean	Y	401	No long term impacts anticipated	0.18	0.00	0.00	WPCP	C	3/9/17	11/5/18	3/6/19	12/18/20
37	05-1C250	MON	68	1.60	4.00	3	PACIFIC GROVE SHOULDER WIDENING - SHOULDER WIDENING, RUMBLE STRIPS, GUARDRAIL - IN MONTEREY COUNTY, PACIFIC GROVE TO SCENIC DRIVE OC NO. 2, BRIDGE 44-41	Carmel Bay (ASBS), Pacific Ocean	N	N/A	No long term impacts anticipated	3.00	0.56	17.00	SWPPP	E	3/9/17	6/19/18	1/29/19	4/10/20

**Table 6-1: District 5 Anticipated Project Development and Construction Schedule**

No.	EA	Project Location					Project Description <sup>1,2</sup>	Water Bodies Within or Adjacent to Project Limits <sup>3</sup>	Dredge and Fill Activities (Y/N/NA) <sup>4</sup>	Other Regional Water Board Permits Required <sup>5</sup>	Potential and Actual Impacts of Project's Discharge <sup>6</sup>	Disturbed Soil Area (acres)	Area of New Impervious Surface (acres)	Percentage of New Impervious Surface to Existing Impervious Surface	Description of Construction Controls (SWPPP/WPCP/TBD) <sup>7</sup>	Post-Construction Treatment Control Type, Quantity <sup>8</sup>	Anticipated Project Delivery Schedule		Construction Period	
		Co.	Route	Begin PM	End PM	RB <sup>9</sup>											PA&ED Date	PS&E Date	Start Date	End Date
38	05-1C260	SBT	25	25.9	26.3	3	LA GLORIA RD CURVE CORRECTION - SUPERELEVATION ADJUSTMENT AND CULVERT EXTENSION - IN SAN BENITO COUNTY, FROM LA GLORIA ROAD AND TO THE NORTH	Willow Creek, San Benito River 303(D) TMDL	N	N/A	No long term impacts anticipated	2.81	0.57	TBD	SWPPP	E	12/12/16	6/18/18	12/7/18	9/25/19
39	05-1C360	SB	217	1.02	1.02	3	SAN JOSE CREEK BRIDGE REPLACEMENT - BRIDGE REPLACEMENT - IN SANTA BARBARA COUNTY, NEAR GOLETA AT THE SAN JOSE CREEK BRIDGE (BR #51 0217)	San Jose Creek 303(d), Goleta Slough/Estuary 303(d)	Y	401	No long term impacts anticipated	4.00	0.00	0.00	SWPPP	E	6/20/19	10/19/21	4/8/22	4/8/25
40	05-1C370	SLO	101	16.4	16.4	3	PISMO CREEK SCOUR REPAIR PROJECT - REPAIR CHANNEL PAVING - IN SAN LUIS OBISPO COUNTY IN PISMO AT PISMO CREEK BRIDGE (BR 49-0015K)	Pismo Creek 303(d)	Y	401	No long term impacts anticipated	0.95	0.19	0.00	WPCP	E	9/14/16	6/21/18	11/21/18	12/1/20
41	05-1C410	SB	154	R2.6	2.6	3	ALAMO PINTADO PED BRIDGE - REMOVE BRIDGE - IN SANTA BARBARA COUNTY ON ROUTE 154 AT ALAMO PINTADO PEDESTRIAN BRIDGE (BR NO 51-0076Y)	Alamo Pintado Creek, Santa Ynez River 303(d)	Y	401	No long term impacts anticipated	0.13	-0.07	NA	WPCP	E	1/15/20	7/15/21	3/1/22	7/15/22
42	05-1C420	SB	154	22.9	23.2	3	COLD SPRING BRIDGE MAINTENANCE INSPECTION ACCESS - INFRASTRUCTURE MAINTENANCE - IN SANTA BARBARA CO. AT COLD SPRING CANYON BRIDGE (BR# 5137)	Kelly Creek	N	N/A	No long term impacts anticipated	0.00	0.00	0.00	WPCP	E	10/15/18	4/15/21	11/1/21	10/15/22
43	05-1C650	SCR	9	22.1	23.8	3	HWY 9 SHOULDER WIDENING, MBGR UPGRADES, CTR RUMBLE STRIP, SUPER IMP - GUARDRAIL, SHOULDER PAVING, RUMBLE STRIPS - IN SANTA CRUZ COUNTY IN CASTLE ROCK STATE PARK FROM 5.0 MILE TO 3.3 MILE SOUTH OF STATE ROUTE 35	Pescadero Creek, San Lorenzo River 303 (d)	N	N/A	No long term impacts anticipated	3.40	1.30	TBD	SWPPP	Other-OGFC	6/29/17	6/21/18	11/7/18	11/5/20
44	05-1C670	SCR	17	0.10	0.40	3	PASATIEMPO SHOULDER WIDENING - SHOULDER WIDENING AND SOIL NAIL WALL - IN SANTA CRUZ FROM 0.5 TO 0.3 MI. SOUTH OF PASATIEMPO OVERCROSSING	Carbonara Creek, Branciforte Cr, San Lorenzo River 303(d) TMDL	N	N/A	No long term impacts anticipated	0.83	0.46	TBD	WPCP	E	7/15/16	6/27/16	12/1/19	1/2/20

**Table 6-1: District 5 Anticipated Project Development and Construction Schedule**

No.	EA	Project Location					Project Description <sup>1,2</sup>	Water Bodies Within or Adjacent to Project Limits <sup>3</sup>	Dredge and Fill Activities (Y/N/NA) <sup>4</sup>	Other Regional Water Board Permits Required <sup>5</sup>	Potential and Actual Impacts of Project's Discharge <sup>6</sup>	Disturbed Soil Area (acres)	Area of New Impervious Surface (acres)	Percentage of New Impervious Surface to Existing Impervious Surface	Description of Construction Controls (SWPPP/WPCP/TBD) <sup>7</sup>	Post-Construction Treatment Control Type, Quantity <sup>8</sup>	Anticipated Project Delivery Schedule		Construction Period	
		Co.	Route	Begin PM	End PM	RB <sup>9</sup>											PA&ED Date	PS&E Date	Start Date	End Date
45	05-1C820	SB	101	2.6	11.9	3	SOUTH COAST 101 REHABILITATION PROJECT - ROADWAY REHABILITATION - IN AND NEAR SANTA BARBARA FROM 0.3 MILES NORTH OF THE JUNCTION OF ROUTE 150/101 SEPARATION TO MILPAS STREET SEPARATION	Carpinteria State Beach 303(d), Santa Monica Creek 303(d), Arroyo Parida 303(d), Carpinteria Creek/Marsh 303(d), Toro Canyon Creek, Garrapata Creek, Romero Creek 303(d), San Ysidro Creek, Oak Creek, Montecito Creek, Andree Clark Bird Refuge, Franklin Creek 303(d)	Y	401	No long term impacts anticipated	9.70	2.50	2.50	SWPPP	C	6/8/18	7/2/19	3/27/20	3/28/24
46	05-1C850	SCR	1	10.2	17.54	3	SCR-1 PAVEMENT OVERLAY - PAVEMENT PRESERVATION - IN AND NEAR SANTA CRUZ FROM NORTH APTOS U.P TO JCT. ROUTE 9	Conbonera Creek, Branciforte Creek, Arana Gulch, Soquel Creek, Nobel Gulch Creek	N	N/A	No long term impacts anticipated	1.25	0.00	0.00	SWPPP	E	8/22/16	6/22/18	4/24/19	11/23/19
47	05-1C890	MON	101	87.3	R91.6	3	SALINAS REHAB - ROADWAY REHABILITATION - ON ROUTE 101 IN MONTEREY COUNTY IN THE CITY OF SALINAS BETWEEN EAST MARKET STREET OVERCROSSING AND 0.3 MILES SOUTH OF RUSSELL/ESPINOSA ROAD	Alisal Cannal, Creek and Slough 303(d), Main Canal, Little Bear Creek, Moss Landing Harbor, Moss Landing	N	N/A	No long term impacts anticipated	27.00	24.00	3.00	SWPPP	C	12/1/15	6/26/18	1/15/19	1/13/21
48	05-1C950	SB	101	R36.62	36.62	3	REFUGIO BRIDGE REPLACEMENT - REPLACE BRIDGES - IN SANTA BARBARA COUNTY ABOUT 6 MI NORTH OF GOLETA AT REFUGIO RD UC	Canada de Refugio 303(d)	Y	401	No long term impacts anticipated	12.70	0.10	0.10	SWPPP	E	4/1/20	2/16/23	9/14/23	9/1/26
49	05-1C960	MON	101	41.40	41.80	3	SALINAS RIVER BRIDGE SEISMIC RETROFIT - SEISMIC RETROFIT - IN MONTEREY COUNTY NEAR KING CITY AT THE SALINAS RIVER BRIDGE (44-0032R/L)	Salinas River 303(d)	Y	401	No long term impacts anticipated	14.20	0.36	0.00	SWPPP	E	5/29/17	6/25/18	2/25/19	2/24/26
50	05-1C970	SB	101	17.2	45.9	3	GOLETA TO GAVIOTA ROADSIDE SAFETY IMPROVEMENTS - ROADSIDE SAFETY IMPROVEMENTS - IN SANTA BARBARA COUNTY AT VARIOUS LOCATIONS FROM 0.6 MILE NORTH OF LAS POSITAS ROAD OC TO 1.3 MILES SOUTH OF GAVIOTA TUNNEL	Canada del Gaviota 303(d), Los Carneros Creek, Canada de la Destiladers, Canada del Refugio, Gato Canyon Creek, Glen Annie Creek 303(d), Las Vegas Creek, San Pedro Creek 303(d), Pacific Ocean, Winchester Canyon Creek 303(d)	N	N/A	No long term impacts anticipated	3.42	0.96	TBD	WPCP	E	8/27/17	2/2/17	8/29/17	10/31/19

**Table 6-1: District 5 Anticipated Project Development and Construction Schedule**

No.	EA	Project Location					Project Description <sup>1,2</sup>	Water Bodies Within or Adjacent to Project Limits <sup>3</sup>	Dredge and Fill Activities (Y/N/NA) <sup>4</sup>	Other Regional Water Board Permits Required <sup>5</sup>	Potential and Actual Impacts of Project's Discharge <sup>6</sup>	Disturbed Soil Area (acres)	Area of New Impervious Surface (acres)	Percentage of New Impervious Surface to Existing Impervious Surface	Description of Construction Controls (SWPPP/WPCP/TBD) <sup>7</sup>	Post-Construction Treatment Control Type, Quantity <sup>8</sup>	Anticipated Project Delivery Schedule		Construction Period	
		Co.	Route	Begin PM	End PM	RB <sup>9</sup>											PA&ED Date	PS&E Date	Start Date	End Date
51	05-1C980	MON	1	Various	Various	3	MON SCR ROADSIDE SAFETY - CONSTRUCT MAINTENANCE VEHICLE PULL OUTS, REPAIRING GUARDRAIL, IMPROVE GATE ACCESS AND RELOCATE IRRIGATION EQUIPMENT - IN SANTA CRUZ AND MONTEREY COUNTIES, FORM SOUTH OF SALINAS ROAD TO SOUTH OF LARKING VALLEY ROAD UNDERCROSSING	Harkins Slough 303(d), Pajaro River, Struve Slough, Watsonville Slough	N	N/A	No long term impacts anticipated	1.10	1.10	TBD	WPCP	E	11/30/17	2/27/19	10/24/19	3/19/20
52	05-1C990	MON	1, 68	72.2, 4.0	81.1, 4.1	3	WORKER SAFETY IMPROVEMENTS, MON COUNTY - ROADSIDE SAFETY IMPROVEMENTS - IN MONTEREY COUNTY ON ROUTES 1 & 68 AT VARIOUS LOCATIONS	Carmel River and Salinas River 303(d), Pajaro River, Struve Slough, Watsonville Slough	N	N/A	No long term impacts anticipated	2.64	1.95	TBD	SWPPP	C	1/15/16	9/21/17	4/20/18	4/24/19
53	05-1E000	SB	101	46.5	68.9	3	NORTH SANTA BARBARA COUNTY ROADSIDE SAFETY - ROADSIDE SAFETY IMPROVEMENTS - IN SANTA BARBARA COUNTY FROM THE GAVIOTA STATE PARK ENTRANCE ON ROUTE 101 TO 0.2 MILES NORTH OF ALISOS CANYON ROAD	La Canada de Gaviota, Nojoqui Creek, San Antonio Creek, Santa Ynez River, Zaca Creek 303(D)	N	NA	No long term impacts anticipated	0.29	0.29	TBD	WPCP	E	10/5/17	2/3/20	7/120	2/8/21
54	05-1E010	SB	101	46.9	46.9	3	GAVIOTA REST AREA WATER SYSTEMS UPGRADE - WASTEWATER SYSTEM UPGRADE - IN SANTA BARBARA COUNTY NEAR GAVIOTA AT THE GAVIOTA SAFETY ROADSIDE REST AREA	Canada del Gaviota 303(d)	N	N/A	No long term impacts anticipated	0.03	0.03	0.00	WPCP	E	2/22/16	4/1/19	12/15/19	7/15/21
55	05-1E020	SCR	152	1.3	R2	3	SCr 152 ADA - ADA COMPLIANCE - IN SANTA CRUZ COUNTY NEAR WATSONVILLE FROM WAGNER AVENUE TO HOLOHAN ROAD	Corallitos Cr. Pajaro River 303(D) TMDL	N	N/A	No long term impacts anticipated	0.70	0.60	0.00	WPCP	E	1/25/16	6/21/18	12/21/18	12/23/19
56	05-1E030	SB	1	49.20	50.40	3	Guadalupe ADA - ADA COMPLIANCE -	Santa Maria River 303(d)	N	N/A	No long term impacts anticipated	0.00	0.00	0.00	WPCP	E	8/13/21	5/6/24	9/27/24	12/10/26
57	05-1E040	SB	101	11	11	3	BUTTERFLY LANE PUC ADA - ADA COMPLIANCE - IN SANTA BARBARA COUNTY AT BUTTERFLY LANE PEDESTRIAN UNDERCROSSING	Pacific Ocean @ Butterfly Beach	N	N/A	No long term impacts anticipated	0.03	0.01	0.00	WPCP	E	11/1/16	5/5/20	1/19/21	12/30/21

**Table 6-1: District 5 Anticipated Project Development and Construction Schedule**

No.	EA	Project Location					Project Description <sup>1,2</sup>	Water Bodies Within or Adjacent to Project Limits <sup>3</sup>	Dredge and Fill Activities (Y/N/NA) <sup>4</sup>	Other Regional Water Board Permits Required <sup>5</sup>	Potential and Actual Impacts of Project's Discharge <sup>6</sup>	Disturbed Soil Area (acres)	Area of New Impervious Surface (acres)	Percentage of New Impervious Surface to Existing Impervious Surface	Description of Construction Controls (SWPPP/WPCP/TBD) <sup>7</sup>	Post-Construction Treatment Control Type, Quantity <sup>8</sup>	Anticipated Project Delivery Schedule		Construction Period	
		Co.	Route	Begin PM	End PM	RB <sup>9</sup>											PA&ED Date	PS&E Date	Start Date	End Date
58	05-1E051	MON	101	53.2	53.2	3	LANDSCAPE FOR SAFETY FACILITY UPGRADES NEAR GREENFIELD - LANDSCAPE SPLIT - IN AND NEAR GREENFIELD FROM 0.2 MI NORTH OF UNDERWOOD ROAD TO 0.3 MI NORTH OF SALINAS RIVER	Salinas River	N	NA	No long term impacts anticipated	0.00	0.00	0.00	WPCP	E	6/26/13	9/8/17	8/8/18	12/30/21
59	05-1F030	SCR/SBT	129	1.8, 0.0	9.9, 0.4	3	129 OPEN GRADE OVERLAY AND MBGR UPGRADE - PLACE OPEN GRADED FRICTION COURSE (OGFC) AND REPLACE/RAISE/UPDATE THE EXISTING METAL BEAM GUARDRAIL (MBGR) AND END TREATMENTS - ON ROUTE 129 BETWEEN 1.8 MILE EAST OF WATSONVILLE (SCR COUNTY PM 1.8/9.9) AND SCHOOL ROAD (SBT COUNTY PM 0.0/0.4)	Pajaro River 303(d) TMDL	N	N/A	No long term impacts anticipated	0.89	0.00	0.00	WPCP	E	6/30/14	10/17/16	6/9/17	11/30/18
60	05-1F080	MON	1	2.5	67.3	3	REPLACE 7 CULVERTS ON MON-1 - CULVERT REHABILITATION - ON ROUTE 1 MIN MONTEREY COUNTY AT VARIOUS LOCATIONS BETWEEN 2.5 MILES NORTH OF THE MONTEREY/SAN LUIS OBISPO COUNTY LINE AND 0.6 MILE SOUTH OF MALPASO CREEK BRIDGE	Pacific Ocean, Big Sur Creek	N	NA	No long term impacts anticipated	2.06	0.00	0.00	WPCP	E	6/30/16	4/9/18	10/16/18	4/12/22
61	05-1F350	SCR	129	3	3.5	3	HWY 129/CARLTON RD. INTERSECTION IMPROVEMENTS - REALIGN CARLTON ROAD, CONSTRUCT NEW INTERSECTION AND LEFT-TURN CHANNELIZATION. - NEAR WATSONVILLE FROM 0.3 MI WEST TO 0.2 MI EAST OF CARLTON ROAD.	Pajaro River 303(d) TMDL	N	N/A	No long term impacts anticipated	5.00	0.11	9.80	SWPPP	E	6/30/16	3/22/18	7/13/18	7/2/19
62	05-1F370	SLO	101, 41	28.5, 12.5	28.7, 13.3	3	SLO BROAD SB ONRAMP SLO 41 GUARDRAIL - UPGRADE HIGHWAY SAFETY FEATURES - IN SAN LUIS OBISPO COUNTY ON ROUTE 101 FROM 0.4 MI N OF MARSH ST BR TO 0.1 MILE S OF CHORRO ST UC AND ON ROUTE 41 FROM OLD MORRO RD TO ATASCADERO CREEK BR NO. 49-51	Stenner Cr., San Luis Obispo Cr., Atascadero Cr., Salinas River (All 303(d))	N	N/A	No long term impacts anticipated	0.96	0.31	TBD	WPCP	E	3/23/18	NA	NA	NA

**Table 6-1: District 5 Anticipated Project Development and Construction Schedule**

No.	EA	Project Location					Project Description <sup>1,2</sup>	Water Bodies Within or Adjacent to Project Limits <sup>3</sup>	Dredge and Fill Activities (Y/N/NA) <sup>4</sup>	Other Regional Water Board Permits Required <sup>5</sup>	Potential and Actual Impacts of Project's Discharge <sup>6</sup>	Disturbed Soil Area (acres)	Area of New Impervious Surface (acres)	Percentage of New Impervious Surface to Existing Impervious Surface	Description of Construction Controls (SWPPP/WPCP/TBD) <sup>7</sup>	Post-Construction Treatment Control Type, Quantity <sup>8</sup>	Anticipated Project Delivery Schedule		Construction Period	
		Co.	Route	Begin PM	End PM	RB <sup>9</sup>											PA&ED Date	PS&E Date	Start Date	End Date
63	05-1F430	SBT	25	R49.7	R52.4	3	RTE DEFICIENCY CORRECTIONS - ROADWAY SAFETY IMPROVEMENTS - IN SAN BENITO COUNTY IN HOLLISTER FROM SUNNYSLOPE/TRES PINOS RD TO SAN FELIPE RD	Santa Ana Creek, Pajaro River 303(d) TMDL	N	N/A	No long term impacts anticipated	6.00	3.00	1.40	SWPPP	DPPIA - TBD	2/9/16	6/18/18	11/12/18	12/12/19
64	05-1F490	SLO	101	36.60	55.70	3	101 MEDIAN BARRIER AND CULVERT - REPLACE MEDIAN BARRIER AND EXTEND CULVERT - IN SAN LUIS OBISPO CO NEAR SAN LUIS OBISPO AT SANTA MARGARITA CREEK AND IN PASO ROBLES FROM 0.8 MILE NORTH OF ROUTE 101/46 SEPARATION TO SOUTH PASO ROBLES OH	Santa Margarita Creek, Salinas River 303(d)	Y	401	No long term impacts anticipated	1.50	0.40	9.00	SWPPP	E	8/1/18	6/8/20	11/20/20	12/1/211
65	05-1F500_	SB	101	70.91	70.91	3	101/135 BRIDGE DECK REPLACEMENT - REPLACE BRIDGE DECKS - IN SANTA BARBARA COUNTY IN LOS ALAMOS AT ROUTE 101/135 SEPARATION	San Antonio Creek 303(d)	N	NA	No long term impacts anticipated	1.74	0.80	TBD	SWPPP	E	12/15/17	8/15/19	3/18/20	7/15/21
66	05-1F510	MON	1	20.95	20.95	3	LIMEKILN CREEK BRIDGE REPLACEMENT - REPLACE BRIDGE - NEAR LUCIA FROM 0.1 MILE SOUTH TO 0.2 MILE NORTH OF LIMEKILN CREEK BRIDGE (BR 44-0058)	Pacific Ocean, Limekiln Creek	TBD	N/A	No long term impacts anticipated	5.30	0.75	TBD	SWPPP	E	12/2/21	4/3/25	8/8/25	12/12/28
67	05-1F520	SCR	1	17.20	0.00	3	SANTA CRUZ BRIDGE RAILS - BRIDGE RAIL UPGRADE - IN SANTA CRUZ COUNTY IN THE CITY OF SANTA CRUZ ON ROUTE 1 AND 17 AT VARIOUS LOCATIONS	Sam Lorenzo River 303(d) & TMDL	N	NA	No long term impacts anticipated	0.50	0.50	TBD	WPCP	E	5/2/15	6/14/18	2/1/19	9/1/19
68	05-1F600	SCR	17	5.45	12.55		HWY 17 ACCESS MANAGEMENT PLAN - -IN SANTA CRUZ COUNTY FROM GRANITE CREEK RD IN SCOTTS VALLEY TO THE SANTA CLARA COUNTY LINE	TBD	TBD	TBD	TBD	TBD	TBD	TBD	TBD	TBD	TBD	TBD	TBD	TBD
69	05-1F620_	SCR	152	1.90	2.00	3	CORRALITOS CREEK ADA - ADA COMPIANT ACCESS - NEAR WATSONVILLE AT CORRALITOS CREEK	Corralitos Creek 303(d), Salsipuedes Creek 303(d), Pajaro River 303(d) TMDL	N	N/A	No long term impacts anticipated	0.36	0.08	TBD	WPCP	E	5/27/20	4/1/22	9/13/22	9/13/23



**Table 6-1: District 5 Anticipated Project Development and Construction Schedule**

No.	EA	Project Location					Project Description <sup>1,2</sup>	Water Bodies Within or Adjacent to Project Limits <sup>3</sup>	Dredge and Fill Activities (Y/N/NA) <sup>4</sup>	Other Regional Water Board Permits Required <sup>5</sup>	Potential and Actual Impacts of Project's Discharge <sup>6</sup>	Disturbed Soil Area (acres)	Area of New Impervious Surface (acres)	Percentage of New Impervious Surface to Existing Impervious Surface	Description of Construction Controls (SWPPP/WPCP/TBD) <sup>7</sup>	Post-Construction Treatment Control Type, Quantity <sup>8</sup>	Anticipated Project Delivery Schedule		Construction Period	
		Co.	Route	Begin PM	End PM	RB <sup>9</sup>											PA&ED Date	PS&E Date	Start Date	End Date
70	05-1F630	SLO	41	14.2	15.9	3	ROUTE 41 ATASCADERO ADA PROJECT - IMPROVE AND CONSTRUCT NEW ADA ACCESSIBLE PEDESTRIAN PATHWAYS AND INSTALL ACCESSIBLE PEDESTRIAN SIGNAL (APS) SYSTEMS - IN ATASCADERO, FROM SAN GABRIEL ROAD TO ROUTE 101 SOUTHBOUND RAMPS.	Atascadero Creek, Salinas River 303(d)	N	NA	No long term impacts anticipated	0.99	0.82	TBD	WPCP	E	10/5/17	6/20/19	2/20/20	2/18/22
71	05-1F680	MON	1	39.8	74.6	3	BIG SUR CAPM - PAVEMENT PRESERVATION - IN MONTEREY COUNTY NEAR BIG SUR FROM TORRE CANYON BRIDGE TO CARPENTER STREET	Mule Canyon Creek, Post Creek, Big Sur River, Pfeiffer Redwood Creek, Juan Higuera Creek, Pheneger Creek, Pacific Ocean, Little Sur River, Bixby Creek, Rocky Creek, Palo Colorado Canyon Creek, Garrapatta Creek, Doud Creek, Soberanes Creek, Malpaso Creek, Wildcat Creek, Gibson Creek, San Jose Creek, Carmel River,	N	N/A	No long term impacts anticipated	0.00	0.00	0.00	WPCP	E	6/5/18	6/17/19	3/26/20	11/3/21
72	05-1F700	MON	101	73.8	87.3	3	SALINAS CAPM - PAVEMENT PRESERVATION - IN MONTEREY COUNTY FROM 1.2 MILES NORTH OF NORTH GONZALES OC TO EAST MARKET STREET UC	Alisal Creek 303(d) , Chualar Creek 303(d) , Salinas River 303(d)	N	N/A	No long term impacts anticipated	0.10	0.10	0.00	WPCP	E	6/30/16	10/29/18	5/8/19	7/1/20
73	05-1F710	SB	1	0	19.20	3	LAS CRUCES CAPM - PAVEMENT PRESERVATION - IN SANTA BARBARA COUNTY NEAR LOMPOC FROM JCT RTE. 101/1 SEP TO JCT RTE 246/1	Alamo Creek, Canada del LAs Cruces, El Jaro Creek, La Canada De Gaviota 303(d) , Salsipuedes Creek 303(d), Santa Ynez River 303(d), Ysidris Creek, Ytias Creek	N	N/A	No long term impacts anticipated	0.86	0.86	TBD	WPCP	E	6/26/14	9/29/17	4/25/18	1/28/19
74	05-1F740	MON	101	28	30.63	3	PARIS VALLEY 2R REHAB - PAVEMENT REHABILITATION (2R) - IN MONTEREY COUNTY NEAR KING CITY FROM 0.1 MILES SOUTH OF PARIS VALLEY ROAD OC TO RANCHO UC	Salinas River 303(d)	N	N/A	No long term impacts anticipated	56.00	28.00	100.00	SWPPP	DPPIA - TBD	7/1/14	12/7/18	6/21/19	12/23/20

**Table 6-1: District 5 Anticipated Project Development and Construction Schedule**

No.	EA	Project Location					Project Description <sup>1,2</sup>	Water Bodies Within or Adjacent to Project Limits <sup>3</sup>	Dredge and Fill Activities (Y/N/NA) <sup>4</sup>	Other Regional Water Board Permits Required <sup>5</sup>	Potential and Actual Impacts of Project's Discharge <sup>6</sup>	Disturbed Soil Area (acres)	Area of New Impervious Surface (acres)	Percentage of New Impervious Surface to Existing Impervious Surface	Description of Construction Controls (SWPPP/WPCP/TBD) <sup>7</sup>	Post-Construction Treatment Control Type, Quantity <sup>8</sup>	Anticipated Project Delivery Schedule		Construction Period	
		Co.	Route	Begin PM	End PM	RB <sup>9</sup>											PA&ED Date	PS&E Date	Start Date	End Date
75	05-1F750	MON	101	37.10	42.00	3	KING CITY REHAB - PAVEMENT REHABILITATION - IN MONTEREY COUNTY IN AND NEAR KING CITY FROM 0.4 MILES SOUTH OF WILD HORSE ROAD OC TO 0.2 MILES NORTH OF JOLON ROAD UC	Salinas River 303(d), San Lorenzo Creek 303(d)	N	N/A	No long term impacts anticipated	73.00	63.00	100.00	SWPPP	DPPIA-TBD	3/2/15	11/3/17	2/13/19	8/19/21
76	05-1F760	SCR	17	6.00	12.6	3	N ROUTE 17 CAPM - PAVEMENT PRESERVATION (CAPM) - IN AND NEAR SCOTTS VALLEY FROM 0.6 MILE NORTH OF GRANITE CREEK ROAD OC TO SANTA CLARA COUNTY LINE	Bean Creek 303(d), Burns Creek, Carbonera Creek303(d)	N	N/A	No long term impacts anticipated	0.01	0.01	0.00	WPCP	E	12/16/14	6/14/18	11/28/18	11/25/20
77	05-1F790	SB	101	56	56	3	NOJOQUI CREEK BRIDGE (51-0018) RAILING UPGRADE - BRIDGE RAIL UPGRADE - IN SANTA BARBARA COUNTY NEAR BUELLTON AT NOJOQUI CREEK BRIDGE (BR NO 51-0018L/R)	Nojoqui Creek, Santa Ynez River 303(d)	N	NA	No long term impacts anticipated	0.40	0.30	TBD	WPCP	E	8/29/18	1/29/20	7/15/20	8/26/21
78	05-1F810	SB	1	M33.1	33.1	3	ROUTE 1/SAN ANTONIO CREEK BRIDGE SCOUR MITIGATION - EXTEND SHEET PILE & RSP - IN SANTA BARBARA COUNTY NEAR LOMPOC AT SAN ANTONIO CREEK	San Antonio Creek 303(d)	Y	401	No long term impacts anticipated	0.50	0.00	0.00	WPCP	E	9/7/18	4/29/20	12/30/20	6/13/23
79	05-1F820	MON	101	R6.6	6.6	3	SAN ANTONIO RIVER BRIDGE- SEISMIC RETROFIT - SEISMIC RETROFIT 2 BRIDGES - IN MONTEREY COUNTY NEAR KING CITY AT THE SAN ANTONIO RIVER BRIDGE (44-0141L/R)	Salinas River 303(d) and San Antonio River 303(d)	Y	401	No long term impacts anticipated	0.33	0.02	0.00	WPCP	E	9/7/18	4/29/20	12/30/20	6/13/23
80	05-1F830	SB	135	R7.2	R7.2	3	SAN ANTONIO CR SEISMIC RETROFIT - SEISMIC RETROFIT - IN SANTA BARBARA COUNTY NEAR LOS ALAMOS AT SAN ANTONIO CREEK BRIDGE (51-0006)	San Antonio Creek 303(d)	Y	401	No long term impacts anticipated	0.00	0.00	0.00	WPCP	E	8/20/18	3/9/20	9/17/20	10/1/21
81	05-1F900	MON	101	73.0/R91.3	0.0/7.5	3	MONTEREY-SAN BENITO CO ROADSIDE SAFETY IMPROVEMENTS - ROADSIDE SAFETY IMPROVEMENTS - IN MONTEREY AND SAN BENITO COUNTIES FROM 0.4 MI NORTH OF NORTH GONZALES OC TO SANTA CLARA COUNTY LINE AT VARIOUS LOCATIONS	Alisal Creek, Chualar Creek, Esperanza Creek, Pajaro River, Salinas Reclamation, Salinas River, San Benito River, Santa Rita Creek	N	NA	No long term impacts anticipated	2.65	2.42	1.00	WPCP	E	6/25/18	3/4/20	8/28/20	4/29/21

**Table 6-1: District 5 Anticipated Project Development and Construction Schedule**

No.	EA	Project Location					Project Description <sup>1,2</sup>	Water Bodies Within or Adjacent to Project Limits <sup>3</sup>	Dredge and Fill Activities (Y/N/NA) <sup>4</sup>	Other Regional Water Board Permits Required <sup>5</sup>	Potential and Actual Impacts of Project's Discharge <sup>6</sup>	Disturbed Soil Area (acres)	Area of New Impervious Surface (acres)	Percentage of New Impervious Surface to Existing Impervious Surface	Description of Construction Controls (SWPPP/WPCP/TBD) <sup>7</sup>	Post-Construction Treatment Control Type, Quantity <sup>8</sup>	Anticipated Project Delivery Schedule		Construction Period	
		Co.	Route	Begin PM	End PM	RB <sup>9</sup>											PA&ED Date	PS&E Date	Start Date	End Date
82	05-1F920	SCR	9	0.1	7.5	3	SCR 9 SOUTH DRAINAGE AND EROSION CONTROL IMPROVEMENTS - UPGRADE DRAINAGE SYSTEMS AND STABILIZE SLOPES - IN SANTA CRUZ COUNTY IN AND NEAR SANTA CRUZ FROM ROUTES 1 AND 9 TO 0.4 MILES NORTH OF GLEN ARBOR ROAD	San Lorenzo River 303(d) TMDL	N	NA	No long term impacts anticipated	1.70	0.06	0.20	WPCP	E	12/14/17	5/4/20	10/30/20	11/1/21
83	05-1G130	SB	1	R36.4	49.2	3	SOLOMON CANYON CAPM - PAVEMENT PRESERVATION - IN SANTA BARBARA COUNTY NEAR SANTA MARIA FROM SOLOMON ROAD TO JCT RTE 166/1	Orcutt Creek 303(d), Santa Maria River 303(d)	N	N/A	No long term impacts anticipated	0.20	0.20	0.00	WPCP	E	6/25/18	10/25/19	5/14/20	2/17/21
84	05-1G140	SLO	1	34.5	44.4	3	CAYUCOS CAPM - PAVEMENT PRESERVATION - IN SAN LUIS OBISPO COUNTY AT AND NEAR CAYUCOS FROM OLD CREEK BRIDGE TO 0.3 MILE NORTH OF HARMONY VALLEY ROAD	Perry Creek, Old Creek, Little Cayucos Creek, Cayucos Creek, Ellysly Creek, Villa Creek, Pacific Ocean @ Cayucos 303(d)	N	N/A	No long term impacts anticipated	0.55	0.35	TBD	WPCP	E	6/23/15	4/2/18	8/28/18	7/1/20
85	05-1G160	SCR	1, 9, 17, 129	var	var	3	SANTA CRUZ COUNTY APS - UPGRADE FOR ACCESSIBLE PEDESTRIAN SIGNAL (APS) - IN SANTA CRUZ COUNTY ON ROUTES 1, 9, 17, AND 129	Valencia Channel/Lagoon 303(d), Aptos Creek 303(d), Ord Gulch, Borregas Creek, Pot Belly Creek, Tannery Gulch, Nobel Creek 303(d), Rodeo Creek 303(d), Arana Gulch 303(d), Branciforte Creek 303(d) TMDL, Carbonera Creek 303(d) TMDL, San Lorenzo River 303(d) TMDL, Pajaro River 303(d) TMDL.	N	N/A	No long term impacts anticipated	0.00	0.00	0.00	WPCP	E	8/1/07	1/11/19	7/15/19	8/3/20
86	05-1G260	SCR	17	9.4	9.6	3	Wildlife Habitat - WILDLIFE CROSSINGS - IN SANTA CRUZ COUNTY	Bean Creek	N	NA	No long term impacts anticipated	0.97	0.00	0.00	WPCP	E	5/25/18	2/8/21	9/22/21	7/13/23
87	05-1G300	SB	var	var	var	3	SB/SLO HORIZONTAL CURVE SIGNS - SIGN UPGRADES - ON VARIOUS STATE HIGHWAYS IN SANTA BARBARA AND SAN LUIS OBISPO COUNTIES	Various	N	NA	No long term impacts anticipated	0.00	0.00	0.00	WPCP	E	6/26/18	5/29/19	11/15/19	5/22/20
88	05-1G310	MON	101	var	var	3	WARNING SIGN UPGRADES - SIGN UPGRADES - ON VARIOUS STATE HIGHWAYS IN MONTEREY, SANTA CRUZ AND SAN BENITO COUNTIES	Various	N	NA	No long term impacts anticipated	0.00	0.00	0.00	WPCP	E	6/26/18	4/24/19	10/4/19	5/12/20

**Table 6-1: District 5 Anticipated Project Development and Construction Schedule**

No.	EA	Project Location					Project Description <sup>1,2</sup>	Water Bodies Within or Adjacent to Project Limits <sup>3</sup>	Dredge and Fill Activities (Y/N/NA) <sup>4</sup>	Other Regional Water Board Permits Required <sup>5</sup>	Potential and Actual Impacts of Project's Discharge <sup>6</sup>	Disturbed Soil Area (acres)	Area of New Impervious Surface (acres)	Percentage of New Impervious Surface to Existing Impervious Surface	Description of Construction Controls (SWPPP/WPCP/TBD) <sup>7</sup>	Post-Construction Treatment Control Type, Quantity <sup>8</sup>	Anticipated Project Delivery Schedule		Construction Period	
		Co.	Route	Begin PM	End PM	RB <sup>9</sup>											PA&ED Date	PS&E Date	Start Date	End Date
89	05-1G370	SLO	46	49.6	49.6	3	SHANDON WASTEWATER EXPANSION - EXPAND WASTEWATER TREATMENT FACILITIES - IN SAN LUIS OBISPO COUNTY ON ROUTE 46 AT HTE SHANDON ROADSIDE REST AREA	Cholame Creek 303(d)	N	NA	No long term impacts anticipated	0.90	0.11	TBD	WPCP	E	10/24/17	7/15/19	11/15/19	7/15/20
90	05-1G450	MON	68	1.6	4.1	3	PACIFIC GROVE CENTERLINE RUMBLE STRIP - CENTERLINE RUMBLE STRIP & OGAC - IN MONTEREY COUNTY, JUST EAST OF PIEDMONT AVENUE TO WEST OF THE JCT RTE 001/068	Pacific Ocean	N	NA	No long term impacts anticipated	0.50	0.07	0.00	WPCP	E	6/16/16	7/19/17	3/12/18	12/31/18
91	05-1G490	SCR	1	1.86	2.73	3	HARKINS BIKE/PED OC - OPERATIONAL IMPROVEMENTS AND BIKE/PED BRIDGE - IN SANTA CRUZ COUNTY AT HARKINS SLOUGH ROAD; GREEN VALLEY ROAD FROM MAIN STREET (SR 152) TO HWY 1	Harkins Slough 303(d)	N	NA	No long term impacts anticipated	0.12	0.02	0.00	WPCP	E	11/15/19	7/1/22	12/1/22	12/1/24
92	05-1G560	SB	135	0	0.80	3	LOS ALAMOS CAPM - PAVEMENT PRESERVATION - IN SANTA BARBARA COUNTY AT LOS ALAMOS ON ROUTE 101 FROM 0.2 MILE SOUTH OF ROUTE 101/135 SEPARATION TO ROUTE 101/135 SEPARATION AND ON ROUTE 135 FROM ROUTE 101/135 SEPARATION TO 0.1 MILE NORTH OF DEN STREET	San Antonio Creek 303(d)	N	NA	No long term impacts anticipated	0.03	0.00	0.00	WPCP	E	9/30/16	11/21/17	4/20/18	5/14/19
93	05-1G570	SLO	58	0.7	1.8	3	SANTA MARGARITA CAPM - PAVEMENT PRESERVATION - IN SAN LUIS OBISPO COUNTY IN SANTA MARGARITA FROM 0.7 MILES EAST OF JUNCTION ROUTE 101/58 SEPARATION TO J STREET	Salinas River 303(d), Yerba Buena Creek, Santa Margarita Creek	N	NA	No long term impacts anticipated	0.43	0.01	0.00	WPCP	E	3/27/17	10/2/18	2/6/19	1/3/20
94	05-1G680	SLO	101	16.2	R20.3	3	US 101 PISMO CONGESTION RELIEF PROJECT - OPERATIONAL IMPROVEMENTS - IN SAN LUIS OBISPO COUNTY IN PISMO BEACH FROM PISMO OVERHEAD TO 0.5 MILE NORTH OF SHELL BEACH ROAD UNDERCROSSING	Pismo Creek	N	NA	No long term impacts anticipated	13.50	9.00	TBD	SWPPP	C	1/5/21	7/12/23	1/31/24	1/2/26

**Table 6-1: District 5 Anticipated Project Development and Construction Schedule**

No.	EA	Project Location					Project Description <sup>1,2</sup>	Water Bodies Within or Adjacent to Project Limits <sup>3</sup>	Dredge and Fill Activities (Y/N/NA) <sup>4</sup>	Other Regional Water Board Permits Required <sup>5</sup>	Potential and Actual Impacts of Project's Discharge <sup>6</sup>	Disturbed Soil Area (acres)	Area of New Impervious Surface (acres)	Percentage of New Impervious Surface to Existing Impervious Surface	Description of Construction Controls (SWPPP/WPCP/TBD) <sup>7</sup>	Post-Construction Treatment Control Type, Quantity <sup>8</sup>	Anticipated Project Delivery Schedule		Construction Period	
		Co.	Route	Begin PM	End PM	RB <sup>9</sup>											PA&ED Date	PS&E Date	Start Date	End Date
95	05-1G750_	SB/SLO	1, 129, 246	Various	Various	3	SB/SLO CROSSWALK ENHANCEMENTS - ELECTRICAL SIGNS MARKINGS PAVEMENT - PROJECT LOCATED IN SB AND SLO COUNTIES ON ROUTES 001, 192 AND 246	Various	N	NA	No long term impacts anticipated	0.00	0.00	0.00	WPCP	E	10/24/17	12/3/18	7/11/19	12/6/19
96	05-1G760	MON/SCR	1, 9, 68, 152, 183	Various	Various	3	NORTH DISTRICT CROSSWALK ENHANCEMENTS - ELECTRICAL / SIGNS / MARKINGS / PAVEMENT - PROJECT LOCATED IN MON AND SCR COUNTIES ON VARIOUS ROUTES	Various	N	NA	No long term impacts anticipated	0.00	0.00	0.00	WPCP	E	4/14/17	2/1/18	6/29/18	4/219
97	05-1G900	SLO/SB	101	Various	Various	3	SOUTH DISTRICT SIGN IMPROVEMENTS - UPDATE SIGNS - IN SAN LUIS OBISPO AND SANTA BARBARA COUNTIES ON VARIOUS ROUTES	Various	N	NA	No long term impacts anticipated	0.00	0.00	0.00	WPCP	E	4/14/17	2/1/18	6/29/18	4/2/19
98	05-1G910_	MON	101	Various	Various	3	NORTH DISTRICT ONE WAY SIGN - UPGRADE SIGNS - IN MONTEREY, SANTA CRUZ AND SAN BENITO COUNTIES ON VARIOUS ROUTES	Various	N	NA	No long term impacts anticipated	0.00	0.00	0.00	WPCP	E	5/18/17	1/10/18	5/21/18	4/30/19
99	05-1G950_	SCR	9	8.5	23.9		SCR 9 UPPER DRAINAGE AND EROSION CONTROL IMPROVEMENTS - DRAINAGE SYSTEM UPGRADES (INSTALL AND REPAIR) AND SLOPE STABILIZATION AT INLETS/OUTLETS - IN SANTA CRUZ COUNTY FROM HOLIDAY LANE, JUST SOUTH OF THE CITY OF BEN LOMOND, TO THE JUNCTION OF ROUTE 236 AND 9	San Lorenzo River 303(d), TMDL	N	NA	No long term impacts anticipated	3.00	0.75	TBD	WPCP	E	8/3/20	3/29/22	9/7/22	3/10/25
100	05-1G960_	SLO, SB, MON, SCR	101	Various	Various	3	PEDESTRIAN SIGNALS #2 - CPS/APS/CONCRETE - VARIOUS LOCATIONS IN SANTA BARBARA, SAN LUIS OBISPO, MONTEREY AND SANTA CRUZ COUNTIES	Various	N	NA	No long term impacts anticipated	0.00	0.00	TBD	WPCP	E	2/22/19	1/4/21	8/18/21	11/1/22
101	05-1G970	SB	135	11.7	17.79	3	SANTA MARIA CAPM - PAVEMENT PRESERVATION - IN SANTA BARBARA COUNTY IN AND NEAR SANTA MARIA FROM LAKEVIEW RD TO JCT. ROUTE 101/135 SEPARATION	Santa Maria River 303(d)	N	NA	No long term impacts anticipated	0.00	0.00	0.00	WPCP	E	6/16/17	11/19/20	5/24/21	8/19/22

**Table 6-1: District 5 Anticipated Project Development and Construction Schedule**

No.	EA	Project Location					Project Description <sup>1,2</sup>	Water Bodies Within or Adjacent to Project Limits <sup>3</sup>	Dredge and Fill Activities (Y/N/NA) <sup>4</sup>	Other Regional Water Board Permits Required <sup>5</sup>	Potential and Actual Impacts of Project's Discharge <sup>6</sup>	Disturbed Soil Area (acres)	Area of New Impervious Surface (acres)	Percentage of New Impervious Surface to Existing Impervious Surface	Description of Construction Controls (SWPPP/WPCP/TBD) <sup>7</sup>	Post-Construction Treatment Control Type, Quantity <sup>8</sup>	Anticipated Project Delivery Schedule		Construction Period	
		Co.	Route	Begin PM	End PM	RB <sup>9</sup>											PA&ED Date	PS&E Date	Start Date	End Date
102	05-1G980	SLO	1	10.00	16.77	3	PISMO BEACH CAPM - PAVEMENT PRESERVATION - IN SAN LUIS OBISPO COUNTY IN AND NEAR PISMO BEACH FROM GARCIA WAY TO SOUTH JCT RTE 101/1 SEPARATION	Arroyo Grande Cr., Los Berros Cr., Meadow Cr., Pismo Cr.	N	NA	No long term impacts anticipated	0.25	0.00	0.00	WPCP	E	2/1/19	4/6/22	8/23/22	7/3/23
103	05-1G990	SCR	129	1.4	1.4	3	129/LAKEVIEW INTERSECTION IMPROVEMENT - CONSTRUCT INTERSECTION SAFETY IMPORVEMENTS - IN SANTA CRUZ COUNTY NEAR WATSONVILLE AT LAKEVIEW ROAD	Pajaro River 303(d) TMDL	N	NA	No long term impacts anticipated	3.00	1.00	TBD	SWPPP	C	11/20/17	6/1/20	11/1/20	9/1/22
104	05-1H000	MON	68	1.12	L4.3	3	PACIFIC GROVE CAPM - PAVEMENT PRESERVATION - IN AND NEAR PACIFIC GROVE FROM FOREST AVENUE TO JUNCTION OF RTE 1/68 SEPARATION (SOUTH)	Carmel Bay ASBS, Pacific Ocean	N	NA	No long term impacts anticipated	0.18	0.18	0.00	WPCP	E	2/26/19	12/11/20	7/15/21	12/9/21
105	05-1H010	SB	1	19.3	20.6	3	LOMPOC CAPM - PAVEMENT PRESERVATION - IN LOMPOC FROM EAST JUNCTION 246/1 TO OCEAN STREET AND ON ROUTE 246 FROM 0.3 MILE WEST OF V STREET TO WEST JUNCTION ROUTE 246/1	San Miguelito Cr., Santa Ynez River	N	NA	No long term impacts anticipated	0.85	0.10	0.00	WPCP	E	7/2/18	12/15/21	7/27/22	7/21/23
106	05-1H020_	MON	101	2.90	5.30	3	CAMP ROBERTS SRRA INFRASTRUCTURE UPGRADE - SAFETY ROADSIDE REST AREA INFRASTRUCTURE UPGRADES AT 2 LOCATIONS - ON ROUTE 101 IN MONTEREY COUNTY NEAR BRADLEY, AT THE CAMP ROBERTS SAFETY ROADSIDE REST AREA (SRRA) NORTHBOUND AND SOUTHBOUND (NB AND SB)	Salinas River 303(d)	N	NA	No long term impacts anticipated	0.75	0.10	0.00	WPCP	E	6/20/17	4/1/20	11/12/20	8/2/22
107	05-1H040_	MON/ SCR	Various	Various	Various	3	BOX BEAM OVERHEAD SIGNS - REPLACE OVERHEAD GUIDE SIGNS WITH RETRO-REFLECTIVE SHEETING - ON VARIOUS ROUTES IN MONTEREY AND SANTA CRUZ COUNTIES	Various	N	NA	No long term impacts anticipated	0.00	0.00	0.00	WPCP	E	6/9/16	10/15/19	6/1/20	3/11/21

**Table 6-1: District 5 Anticipated Project Development and Construction Schedule**

No.	EA	Project Location					Project Description <sup>1,2</sup>	Water Bodies Within or Adjacent to Project Limits <sup>3</sup>	Dredge and Fill Activities (Y/N/NA) <sup>4</sup>	Other Regional Water Board Permits Required <sup>5</sup>	Potential and Actual Impacts of Project's Discharge <sup>6</sup>	Disturbed Soil Area (acres)	Area of New Impervious Surface (acres)	Percentage of New Impervious Surface to Existing Impervious Surface	Description of Construction Controls (SWPPP/WPCP/TBD) <sup>7</sup>	Post-Construction Treatment Control Type, Quantity <sup>8</sup>	Anticipated Project Delivery Schedule		Construction Period	
		Co.	Route	Begin PM	End PM	RB <sup>9</sup>											PA&ED Date	PS&E Date	Start Date	End Date
108	05-1H050_	MON	101	87.40	87.80	3	MARKET STREET NORTHBOUND ON-RAMP IMPROVEMENTS - ROADWAY AND RETAINING WALL - IN MONTEREY COUNTY ON IN AND NEAR SALINAS FROM 0.1 MILE NORTH OF E. MARKET STREET UC TO 0.1 MILE SOUTH OF SHERWOOD DRIVE OC	Alisal Creek	N	NA	No long term impacts anticipated	1.00	0.50	0.00	SWPPP	E	7/1/19	8/6/21	2/23/22	11/1/23
109	05-1H060	SCR	1, 17	16.7, 3	16.7, 3	3	PASATIEMPO II - CONSTRUCT RAMP SAFETY IMPROVEMENTS - IN SANTA CRUZ COUNTY IN SANTA CRUZ FROM 0.1 MILE SOUTH OF ROUTE 1/17 SEPARATION TO 0.4 MILE SOUTH OF PASATIEMPO OVERCROSSING	Carbonera Creek, San Lorenzo River 303(d) TMDL	N	NA	No long term impacts anticipated	3.30	0.88	TBD	SWPPP	E	11/20/17	11/1/19	5/1/20	7/1/21
110	05-1H220_	MON	68	0.50	0.80	3	Pacific Grove ADA Pathway - PEDESTRIAN ACCESSIBLE PATHWAY - IN PACIFIC GROVE FROM 17 MILE DRIVE TO CONGRESS AVENUE	Pacific Ocean	N	NA	No long term impacts anticipated	0.20	0.20	TBD	WPCP	E	4/19/19	7/21/21	2/10/22	9/20/23
111	05-1H230_	MON	218	0.20	0.90	3	SEASIDE ADA - ADA COMPLIANT PEDESTRIAN ACCESS - IN MONTEREY COUNTY IN THE CITY OF SEASIDE FROM DEL MONTE ROAD TO FREMONT BOULEVARD	Pacific Ocean, Roberts Lake	N	NA	No long term impacts anticipated	0.58	0.00	0.00	WPCP	E	4/4/19	9/1/21	3/9/22	12/30/22
112	05-1H290	SB	101	13.8	14.8	3	SANTA BARBARA 101 PUMP HOUSE REHAB - REHABILITATE PUMP HOUSE - 3 LOCATIONS - IN SANTA BARBARA COUNTY IN SANTA BARBARA FROM STATE STREET UC TO CARILLO STREET UC	Mission Creek 303(d)	N	NA	No long term impacts anticipated	0.00	0.00	0.00	WPCP	E	3/9/17	8/8/18	12/11/18	12/11/19
113	05-1H310_	SB	154	5.80	6.10	3	154/BASELINE-EDISON INTERSECTION IMPROVEMENTS - INTERSECTION CONTROL EVALUATION (ICE) - IN SANTA BARBARA COUNTY ON ROUTE 154 IN THE SANTA YNEZ VALLEY AT BASELINE AVENUE / EDISON STREET	Santa Ynez River, Zanja de Cota Creek	N	NA	No long term impacts anticipated	5.00	3.50	TBD	SWPPP	C	2/13/20	11/30/21	7/22/22	8/7/23
114	05-1H430	SB	101	21.62	21.62	3	SAN JOSE CK BRIDGE REPLACEMENT - REPLACE BRIDGES - IN SANTA BARBARA COUNTY ON ROUTE 101 IN GOLETA AT SAN JOSE CREEK BRIDGE (#51-0163L/R)	San Jose Creek 303(d)	Y	401	No long term impacts anticipated	0.92	0.26	TBD	WPCP	E	4/15/20	9/28/21	6/10/22	12/6/24

**Table 6-1: District 5 Anticipated Project Development and Construction Schedule**

No.	EA	Project Location					Project Description <sup>1,2</sup>	Water Bodies Within or Adjacent to Project Limits <sup>3</sup>	Dredge and Fill Activities (Y/N/NA) <sup>4</sup>	Other Regional Water Board Permits Required <sup>5</sup>	Potential and Actual Impacts of Project's Discharge <sup>6</sup>	Disturbed Soil Area (acres)	Area of New Impervious Surface (acres)	Percentage of New Impervious Surface to Existing Impervious Surface	Description of Construction Controls (SWPPP/WPCP/TBD) <sup>7</sup>	Post-Construction Treatment Control Type, Quantity <sup>8</sup>	Anticipated Project Delivery Schedule		Construction Period	
		Co.	Route	Begin PM	End PM	RB <sup>9</sup>											PA&ED Date	PS&E Date	Start Date	End Date
115	05-1H440	SLO	1	0.10	0.10	3	SANTA MARIA RIVER BRIDGE REHAB - REHABILITATE BRIDGE DECK AND REPLACE RAIL - IN SAN LUIS OBISPO COUNTY NEAR THE CITY OF GUADALUPE AT THE SANTA MARIA RIVER BRIDGE (#49-0042)	Santa Maria River 303(d)	Y	401	No long term impacts anticipated	10.50	1.50	TBD	SWPPP	C	3/2/20	9/30/22	3/1/23	11/13/25
116	05-1H450	SB	154	R31.82	R32.07	3	REHAB PRIMAVERA & LA COLINA BRIDGES - SUBSTRUCTURE REHABILITATION/ BRIDGE RAIL UPGRADE - IN THE CITY AND COUNTY OF SANTA BARBARA AT LA COLINA ROAD UC(51-0256) AND PRIMAVERA ROAD UC (51-0257)	Cieneguitas Creek, Atascadero Creek 303(d)	N	NA	No long term impacts anticipated	0.10	0.10	TBD	WPCP	E	12/16/19	7/26/21	12/30/21	5/31/23
117	05-1H460	MON	1	63.00	63.00	3	GARRAPATA CREEK BRIDGE REHAB - ELECTROCHEMICAL CHLORIDE EXTRACTION (ECE) OF BRIDGE STRUCTURE - IN MONTEREY COUNTY ABOUT 11.3 MILES SOUTH OF CARMEL-BY-THE-SEA AT AT GARAPATA CREEK BRIDGE (#44-0018)	Garrapata Creek	N	NA	No long term impacts anticipated	0.00	0.00	0.00	WPCP	E	4/18/19	1/8/21	7/12/21	9/13/22
118	05-1H470	SCR	9	13.6	15.5	3	SAN LORENZO RIVER BRIDGE AND KINGS CREEK BRIDGE REPLACEMENT - REPLACE BRIDGES - ON ROUTE 9 IN SANTA CRUZ COUNTY, NEAR BOULDER CREEK, AT SAN LORENZO RIVER BRIDGE (PM 13.6) AND AT KINGS CREEK BRIDGE (PM 15.5)	Kings Creek, San Lorenzo River 303(d) TMDL	Y	401	No long term impacts anticipated	1.19	0.38	TBD	SWPPP	E	8/24/20	1/24/22	7/1/22	3/27/26
119	05-1H480	SCR	1	13.31	13.31	3	SOQUEL CREEK SCOUR PROTECTION - BRIDGE PREVENTATIVE MAINTENANCE - PLACE SCOUR PROTECTION - IN SANTA CRUZ COUNTY IN CAPITOLA AT SOQUEL CREEK BRIDGE	Soquel Creek and Soquel Lagoon 303(d)	Y	401	No long term impacts anticipated	0.50	0.00	0.00	WPCP	E	12/31/19	7/1/21	2/1/22	9/29/23
120	05-1H490_	MON	1	43.10	43.10	3	CASTRO CYN BRIDGE RAIL UPGRADE - REPLACE BRIDGE RAIL - IN MONTEREY COUNTY NEAR BIG SUR AT CASTRO CANYON BRIDGE	Castro Creek	N	NA	No long term impacts anticipated	0.02	0.01	0.00	WPCP	E	10/1/19	4/1/21	12/1/21	6/1/22



**Table 6-1: District 5 Anticipated Project Development and Construction Schedule**

No.	EA	Project Location					Project Description <sup>1,2</sup>	Water Bodies Within or Adjacent to Project Limits <sup>3</sup>	Dredge and Fill Activities (Y/N/NA) <sup>4</sup>	Other Regional Water Board Permits Required <sup>5</sup>	Potential and Actual Impacts of Project's Discharge <sup>6</sup>	Disturbed Soil Area (acres)	Area of New Impervious Surface (acres)	Percentage of New Impervious Surface to Existing Impervious Surface	Description of Construction Controls (SWPPP/WPCP/TBD) <sup>7</sup>	Post-Construction Treatment Control Type, Quantity <sup>8</sup>	Anticipated Project Delivery Schedule		Construction Period	
		Co.	Route	Begin PM	End PM	RB <sup>9</sup>											PA&ED Date	PS&E Date	Start Date	End Date
121	05-1H610_	SB	1	35.00	49.20	3	SOLOMON CANYON RUMBLE STRIP/SHOULDER WIDENING - WIDEN SHOULDERS, SHOULDER RUMBLE STRIPE, UPGRADE GUARDRAILS AND RELOCATE OR REMOVE UTILITY POLES AND OTHER OBJECTS. - IN SANTA BARBARA COUNTY FROM JUST NORTH OF ORCUTT TO THE SOUTH OF THE JUNCTION OF 001 AND 166	Orcutt Creek 303(d)	Y	401	No long term impacts anticipated	20.00	17.00	TBD	SWPPP	C	4/13/21	7/14/23	2/22/24	9/11/25
122	05-1H620	MON	101	R41.64	47.69	3	NORTH KING CITY BARRIER - MEDIAN BARRIER - IN MONTEREY COUNTY FROM JUST NORTH OF KING CITY AT SALINAS RIVER BRIDGE TO X-OVER AT TEAGUE AVENUE	Sallinas River 303(d)	N	NA	No long term impacts anticipated	7.70	3.02	30.00	SWPPP	C	10/6/16	6/25/18	2/22/19	2/24/26
123	05-1H630	SB	154	21.3	21.3		BEAR CREEK CULVERT INVERT PAVING - CULVERT INVERT PAVING WITH FISH PASSAGE - IN SANTA BARBARA COUNTY NEAR LAKE CACHUMA AT 0.31 MILE WEST OF PARADISE ROAD.	Bear Creek, Santa Ynez River, Lake Cachuma 303(d)	TBD	TBD	No long term impacts anticipated	TBD	TBD	TBD	TBD	TBD	5/14/19	10/13/20	5/25/21	12/17/21
124	05-1H650_	MON	183	8.40	9.80	3	CASTROVILLE IMPROVEMENT PROJECT - ASSET MANAGEMENT PILOT PROJECT - IN THE COMMUNITY OF CASTROVILLE FROM DEL MONTE AVENUE TO WASHINGTON STREET	Moro Coho Slough, Tembladero Slough 303(d)	N	NA	No long term impacts anticipated	1.78	0.61	TBD	SWPPP	E	3/5/20	4/15/22	10/26/22	2/1/24
125	05-1H690	MON	101	R91.5	101.3	3	PRUNEDALE REHAB - PAVEMENT REHABILITATION - IN MONTEREY COUNTY IN AND NEAR PRUNEDALE 0.5 MILE NORTH OF BORONDA ROAD OVERCROSSING TO MONTEREY/SAN BENITO COUNTY LINE	Elkhorn Slough 303(d), Prunedale Creek, Tembladero Slough, Los Carneros Creek	N	NA	No long term impacts anticipated	29.00	18.00	TBD	SWPPP	C	9/3/19	8/3/21	2/25/22	1/26/24
126	05-1H800_	MON	1	63.00	63.00	3	GARRAPATA CREEK BRIDGE RAIL REPLACEMENT - BRIDGE RAIL REHABILITATION - IN MONTEREY COUNTY ABOUT 11.3 MILES SOUTH OF CARMEL-BY-THE-SEA AT GARRAPATA CREEK BRIDGE	Garrapata Creek	N	NA	No long term impacts anticipated	0.50	0.01	TBD	WPCP	E	4/21/21	2/14/23	9/8/23	9/11/24

**Table 6-1: District 5 Anticipated Project Development and Construction Schedule**

No.	EA	Project Location					Project Description <sup>1,2</sup>	Water Bodies Within or Adjacent to Project Limits <sup>3</sup>	Dredge and Fill Activities (Y/N/NA) <sup>4</sup>	Other Regional Water Board Permits Required <sup>5</sup>	Potential and Actual Impacts of Project's Discharge <sup>6</sup>	Disturbed Soil Area (acres)	Area of New Impervious Surface (acres)	Percentage of New Impervious Surface to Existing Impervious Surface	Description of Construction Controls (SWPPP/WPCP/TBD) <sup>7</sup>	Post-Construction Treatment Control Type, Quantity <sup>8</sup>	Anticipated Project Delivery Schedule		Construction Period	
		Co.	Route	Begin PM	End PM	RB <sup>9</sup>											PA&ED Date	PS&E Date	Start Date	End Date
127	05-1H810	SBT	25	18.8	19.50	3	RTE 25 CURVE ALIGNMENT RESTORATION - WIDEN THROUGH-CUT TO PROVIDE GREATER CATCHMENT AND FLATTEN SLOPE REPOSE. SHIFT HORIZONTAL ALIGNMENT 35 FEET TO STATION RIGHT - IN SAN BENITO COUNTY ABOUT 32 MILES SOUTH OF HOLLISTER FROM 0.8 MILES NORTH OF SAN BENITO LATERAL TO 2 MILES SOUTH OF ROUTE 146	San Benito River 303(d)	N	NA	No long term impacts anticipated	5.80	0.80	TBD	SWPPP	E	1/18/19	6/18/20	1/15/21	9/17/21
128	05-1H850_	SB	101	0	0	3	SANTA MARIA ROADSIDE SAFETY IMPROVEMENTS PROJECT - ROADSIDE SAFETY IMPROVEMENTS - IN SANTA BARBARA AND SAN LUIS OBISPO COUNTIES FROM ALISOS CANYON RD TO LOS BERROS RD AT VARIOUS LOCATIONS	Bradley Channel, Santa Maria River 303(d)	N	NA	No long term impacts anticipated	0.75	0.75	TBD	WPCP	E	10/24/19	9/25/20	9/30/21	2/22/22
129	05-1H860	SB	101	R46.2	R52.34	3	GAVIOTA-NOJOQUI REHAB - PAVEMENT REHABILITATION - IN SANTA BARBARA COUNTY IN AND NEAR GAVIOTA FROM 0.9 MILE SOUTH OF GAVIOTA TUNNEL TO 0.1 MILES NORTH OF OLD COAST HIGHWAY	Canada de la Gaviota, Las Canovas Creek, Nojoqui Creek 303(d)	N	NA	No long term impacts anticipated	5.00	3.20	TBD	SWPPP	C	12/2/19	9/22/21	5/2/22	4/27/23
130	05-1H930	SLO	46	R17.398	17.398	3	VINEYARD ROUNDABOUT - CONSTRUCT INTERSECTION SAFETY IMPROVEMENTS - ON ROUTE 46 WEST IN SAN LUIS OBISPO COUNTY, AT VINEYARD DRIVE	Paso Robles Creek, Salinas River 303(d)	N	NA	No long term impacts anticipated	5.40	0.59	TBD	SWPPP	E	12/11/17	1/24/20	9/2/20	7/15/22
131	05-1H960	SB	135	10.6	17.6	3	ROUTE 135 SIGNAL MODIFICATIONS - MODIFY SIGNALS, RECONSTRUCT RAMPS - IN SANTA BARBARA COUNTY IN SANTA MARIA AT VARIOUS LOCATIONS FROM UNION VALLEY PARKWAY TO PREISKER LANE	Santa Maria River 303(d)	N	NA	No long term impacts anticipated	0.00	0.00	0.00	WPCP	E	12/15/17	10/3/19	10/6/20	3/2/21
132	05-1H970	Various	Various	Various	Various		CTS ADVANCE MITIGATION - ADVANCE MITIGATION-IN MONTEREY, SAN BENITO, SAN LUIS OBISPO AND SANTA CRUZ COUNTIES ON VARIOUS ROUTES AT VARIOUS LOCATIONS	TBD	TBD	TBD	TBD	TBD	TBD	TBD	TBD	TBD	6/9/17	9/5/17	9/28/18	7/30/20

**Table 6-1: District 5 Anticipated Project Development and Construction Schedule**

No.	EA	Project Location					Project Description <sup>1,2</sup>	Water Bodies Within or Adjacent to Project Limits <sup>3</sup>	Dredge and Fill Activities (Y/N/NA) <sup>4</sup>	Other Regional Water Board Permits Required <sup>5</sup>	Potential and Actual Impacts of Project's Discharge <sup>6</sup>	Disturbed Soil Area (acres)	Area of New Impervious Surface (acres)	Percentage of New Impervious Surface to Existing Impervious Surface	Description of Construction Controls (SWPPP/WPCP/TBD) <sup>7</sup>	Post-Construction Treatment Control Type, Quantity <sup>8</sup>	Anticipated Project Delivery Schedule		Construction Period	
		Co.	Route	Begin PM	End PM	RB <sup>9</sup>											PA&ED Date	PS&E Date	Start Date	End Date
133	05-1H980	SB	101	78.7	78.7	3	SOLOMON SUMMIT RAMPS REHAB - REHABILITATE PAVEMENT - IN SANTA BARBARA COUNTY NEAR SANTA MARIA AT SOLOMON SUMMIT UNDERCROSSING 51-191	Orcutt Creek 303(d)	N	NA	No long term impacts anticipated	4.70	0.95	TBD	WPCP	E	7/16/18	7/23/19	3/6/20	12/21/20
134	05-1H990	Various	Various	Various	Various	3	TMS DETECTION REPAIR - REPLACE FAILED TRAFFIC MANAGEMENT SYSTEM (TMS) DETECTION - VARIOUS LOCATIONS THROUGHOUT THE DISTRICT	Various	N	NA	No long term impacts anticipated	0.00	0.00	0.00	WPCP	E	9/6/18	4/1/20	11/6/20	4/5/21
135	05-1J040	SLO, MON	46, 101	49.55, R3.1	49.55, R5.2	3	ZEV PROJECT - INSTALL ZEV CHARGING STATION IN STATE RIGHT OF WAY. - IN VARIOUS LOCATIONS WITHIN DISTRICT 5	Estrella River, Salinas River 303(d)	N	NA	No long term impacts anticipated	0.04	0.04	0.00	WPCP	E	1/31/17	11/20/18	4/8/19	9/12/19
136	05-1J400	SCR	9	11.00	11.00	3	BROOKEDALE VIADUCT - CONSTRUCT SIDEHILL VIADUCT-IN SANTA CRUZ COUNTY NEAR BROOKDALE AT PM 11.0	TBD	TBD	TBD	TBD	TBD	TBD	TBD	TBD	TBD	TBD	9/6/17	TBD	TBD
137	05-1J440	SLO	101	27.96	27.96	3	SB MARSH STREET ONRAMP IMPROVEMENTS - SUPERELEVATION AND DRAINAGE IMPROVEMENTS - SOUTHBOUND ROUTE 101 ONRAMP FROM MARSH ST IN SAN LUIS OBISPO COUNTY	San Luis Obispo Creek 303(d)	N	NA	No long term impacts anticipated	0.05	0.00	TBD	WPCP	E	4/1/19	7/8/20	10/21/20	4/1/21
138	05-1J460	MON	68	2.70	3.74	3	HWY 68 CURVE CORRECTION - IMPROVE SUPERELEVATION, WIDEN SHOULDERS, INSTALL RUMBLE STRIP AND PROVIDE TAPERED EDGE TREATMENT - IN AND NEAR PACIFIC GROVE FROM 0.44 MILES EAST OF SFB MORSE DRIVE TO 0.16 MILES WEST OF COMMUNITY HOSPITAL ENTRANCE	Pacific Ocean, Carmel Bay ASBS	N	NA	No long term impacts anticipated	TBD	TBD	TBD	TBD	TBD	8/21/19	7/23/20	7/28/21	12/17/21
139	05-1J470	SB	135	0	0	3	BUNNY LANE AND NORTH BROADWAY PED IMPROVEMENTS - SIGNALS, LIGHTING, SIDEWALKS AND CURB RAMPS - IN SANTA BARBARA COUNTY IN SANTA MARIA AT BUNNY AVENUE AND FROM ROEMER WAY TO PREISKER LANE	Santa Maria River 303(d)	N	NA	No long term impacts anticipated	TBD	TBD	TBD	TBD	E	9/17/19	8/18/20	8/23/21	1/12/22

**Table 6-1: District 5 Anticipated Project Development and Construction Schedule**

No.	EA	Project Location					Project Description <sup>1,2</sup>	Water Bodies Within or Adjacent to Project Limits <sup>3</sup>	Dredge and Fill Activities (Y/N/NA) <sup>4</sup>	Other Regional Water Board Permits Required <sup>5</sup>	Potential and Actual Impacts of Project's Discharge <sup>6</sup>	Disturbed Soil Area (acres)	Area of New Impervious Surface (acres)	Percentage of New Impervious Surface to Existing Impervious Surface	Description of Construction Controls (SWPPP/WPCP/TBD) <sup>7</sup>	Post-Construction Treatment Control Type, Quantity <sup>8</sup>	Anticipated Project Delivery Schedule		Construction Period	
		Co.	Route	Begin PM	End PM	RB <sup>9</sup>											PA&ED Date	PS&E Date	Start Date	End Date
140	05-1J480	SBT	25	54.048	54.048	3	SR 25/156 ROUNDABOUT - CONSTRUCT ROUNDABOUT AT THE INTERSECTION OF ROUTE 25/156, NORTH OF THE CITY OF HOLLISTER IN SAN BENITO COUNTY	Pajaro River 303(d) TMDL	N	NA	No long term impacts anticipated	TBD	TBD	TBD	TBD	E	10/22/19	9/23/20	9/28/21	2/17/22
141	05-1J710	SLO	101	38.5	39.4	3	NB SLO 101 SUPERELEVATION AND OGFC - SUPERELEVATION CORRECTION AND OGFC-IN SAN LUIS OBISPO COUNTY NEAR SANTA MARGARITA FROM 0.5 MILE NORTH OF SANTA MARGARITA CREEK BRIDGE (49-153) TO 2.9 MILE SOUTH OF SANTA BARBARA ROAD OVERCROSSING (49-157)	Salinas River, Santa Margarita Creek	TBD	TBD	TBD	0.00	0.00	NA	WPCP	E	7/8/20	10/28/21	6/13/22	10/31/22
142	05-1J780	SLO	101	61.88	61.88	3	WELLSONA SAFETY IMPROVEMENTS - STRUCTURES, PAVING AND DRAINAGE-ON ROUTE 101, IN SAN LUIS OBISPO COUNTY AT WELLSONA ROAD.	Salinas River	TBD	401	No long term impacts anticipated	3.00	0.15	NA	WPCP	E	10/1/20	5/16/22	10/17/22	3/1/24
143	05-1J830	SCR	129	0	0.56	3	129 PAVING, SIGN PANELS, LIGHTING, TMS IMPROVEMENT - PAVEMENT PRESERVATION, LIGHTING, SIGN PANEL REPLACEMENT AND TMS ELEMENTS IMPROVEMENTS-IN SANTA CRUZ COUNTY, IN AND NEAR WATSONVILLE FOR SR129/1 SEPARATION TO SALSIPUEDES CREEK BRIDGE	Pajaro River 303(d) TMDL	TBD	TBD	No long term impacts anticipated	4.83	0.03	TBD	SWPPP	E	2/1/22	5/1/24	1/8/25	11/7/25
144	05-1J860	SLO	101	7.8	16.5	3	SLO COUNTY ASSET MANAGEMENT IMPROVEMENTS - MAINTAIN EXISTING AC WITH OVERLAY, INSTALL/REPLACE CULVERTS IN VARIOUS LOCATIONS AND UPDATE 1 CENSUS-US 101 IN SAN LUIS OBISPO COUNTY FROM LOS BERROS ROAD TO PISMO CREEK BRIDGE NO 49-15	Arroyo Grande CR., Nipomo Creek, Pismo Creek, Pismo Lake	TBD	401	No long term impacts anticipated	5.00	0.00	0.00	SWPPP	E	10/3/22	6/3/24	12/9/24	7/1/26

**Table 6-1: District 5 Anticipated Project Development and Construction Schedule**

No.	EA	Project Location					Project Description <sup>1,2</sup>	Water Bodies Within or Adjacent to Project Limits <sup>3</sup>	Dredge and Fill Activities (Y/N/NA) <sup>4</sup>	Other Regional Water Board Permits Required <sup>5</sup>	Potential and Actual Impacts of Project's Discharge <sup>6</sup>	Disturbed Soil Area (acres)	Area of New Impervious Surface (acres)	Percentage of New Impervious Surface to Existing Impervious Surface	Description of Construction Controls (SWPPP/WPCP/TBD) <sup>7</sup>	Post-Construction Treatment Control Type, Quantity <sup>8</sup>	Anticipated Project Delivery Schedule		Construction Period	
		Co.	Route	Begin PM	End PM	RB <sup>9</sup>											PA&ED Date	PS&E Date	Start Date	End Date
145	05-1J870	MON	1	26.9	38.3	3	BIG CREEK BRIDGE RAIL REPLACEMENT - REPLACE BRIDGE RAILING AND EXTRACT CHLORIDES, DRAINAGE IMPROVEMENTS AND COUNT STATION-ON ROUTE 1 IN MONTEREY COUNTY FROM 1.0 MILE NORTH OF VICENTE CREEK BRIDGE TO 1.0 MILE SOUTH OF SYCAMORE DRAW BRIDGE	TBD	TBD	TBD	TBD	TBD	TBD	TBD	TBD	TBD	10/21/21	2/15/23	9/27/23	2/20/24
146	05-1J880	MON	68	0.2	15.7	3	ROUTE 68 DRAINAGE IMPROVEMENTS - DRAINAGE IMPROVEMENT, REPLACE LIGHTING, AND INSTALL COUNT STATIONS-ON ROUTE 68 IN MONTEREY COUNTY FROM JUST WEST OF SUNSET DR TO TORO PARK UNDERCROSSING	Carmel Bay ASBS, Del Monte Lake, Monterey Bay, Salinas River, Toro Creek	N	401	No long term impacts anticipated	0.50	0.00	0.00	WPCP	E	3/22/06	3/23/06	3/24/06	3/25/06
147	05-1J890	MON	101	28.23	100.3	3	MON 101 DRAINAGE AND SAFETY - ROADSIDE SAFETY IMPROVEMENTS, DRAINAGE PUMPING PLANTS AND OTHER DRAINAGE IMPROVEMENTS, REPLACE OVERHEAD SIGNS & STRUCTURES, AND TMS ELEMENTS-ON ROUTE 101 IN MONTEREY COUNTY FROM PARIS VALLEY RD. O.C. TO DUNBARTON RD.	TBD	TBD	TBD	TBD	TBD	TBD	TBD	TBD	TBD	11/16/20	3/11/22	9/22/22	3/16/23
148	05-1J900	SB	101	12.77	22.54	3	SANTA BARBARA 101 PAVE - CAPM FROM PM12.77 TO 20.95. ROADSIDE REHAB LOCATIONS EXTEND TO PM 22.54. DRAINAGE IMPROVEMENTS, INSTALL COUNT STATION & SEVERAL CCTV'S, REPLACE BRIDGE RAIL & SEISMIC RESTORATION, INSTALL WEIGH IN MOTION STATION, & REPLACE SIGN PANELS-ON ROUTE 101 IN SANTA BARBARA COUNTY FROM MILPAS STREET U.C. TO FAIRVIEW AVENUE O.C.	TBD	TBD	TBD	TBD	TBD	TBD	TBD	TBD	TBD	8/19/20	12/14/21	7/26/22	12/15/22
149	05-1J910	SB	101	1.5	74.3	3	SOUTH COAST 101 DRAINAGE AND ROADSIDE SAFETY - -	TBD	TBD	TBD	TBD	TBD	TBD	TBD	TBD	TBD	11/16/20	3/11/22	10/20/22	3/16/23

**Table 6-1: District 5 Anticipated Project Development and Construction Schedule**

No.	EA	Project Location					Project Description <sup>1,2</sup>	Water Bodies Within or Adjacent to Project Limits <sup>3</sup>	Dredge and Fill Activities (Y/N/NA) <sup>4</sup>	Other Regional Water Board Permits Required <sup>5</sup>	Potential and Actual Impacts of Project's Discharge <sup>6</sup>	Disturbed Soil Area (acres)	Area of New Impervious Surface (acres)	Percentage of New Impervious Surface to Existing Impervious Surface	Description of Construction Controls (SWPPP/WPCP/TBD) <sup>7</sup>	Post-Construction Treatment Control Type, Quantity <sup>8</sup>	Anticipated Project Delivery Schedule		Construction Period	
		Co.	Route	Begin PM	End PM	RB <sup>9</sup>											PA&ED Date	PS&E Date	Start Date	End Date
150	05-1J960	SCR	1	8.2	26	3	SCR 1 ROADSIDE SAFETY - DRAINAGE SYSTEM RESTORATION; REMOVE THRIE BEAM BARRIER & INSTALL CONCRETE BARRIER (PM 10.38/12.9; 13.65/14.84); ROADSIDE SAFETY IMPROVEMENTS PAVING AT 40 RAMPS; INSTALL LIGHTING AT INTERCHANGES AND INSTALL COUNT STATIONS-IN SANTA CRUZ COUNTY FROM 0.5 MILE NORTH OF LARKIN VALLEY RD. U.C. (SAN ANDREAS RD) TO LAGUNA RD (NORTH)	TBD	TBD	TBD	TBD	TBD	TBD	TBD	TBD	TBD	8/19/20	12/14/21	6/27/22	12/15/22
151	05-1J970	SLO	58	1.8	6.89	3	SANTA MARGARITA 58 CAPM - ROADWAY REHABILITATION, DRAINAGE IMPROVEMENTS, INSTALL COUNT STATIONS AND REPLACE SIGN PANELS.- ON ROUTE 58 IN SAN LUIS OBISPO COUNTY AT AND NEAR SANTA MARGARITA FROM I STREET TO ROUTE 229	Salinas river, Santa Margarita Creek, Trout Creek, Yerba Buena Creek	TBD	401	No long term impacts anticipated	1.50	0.00	0.00	SWPPP	E	5/2/22	5/29/24	12/27/24	10/4/28
152	05-1J990	MON	1	0.1	43.8	3	MON 1 CULVERT REHAB 1 - DRAINAGE SYSTEM RESTORATION-IN MONTEREY COUNTY FROM 0.1 MILE NORTH OF THE SAN LUIS OBISPO COUNTY LINE TO 2.8 MILES SOUTH OF BIG SUR	ASBS #20, Pacific Ocean	TBD	401	No long term impacts anticipated	0.25	0.00	0.00	WPCP	E	10/21/21	2/15/23	9/27/23	2/20/24
153	05-1K000	MON	1	22.6	31.7	3	MON 1 CULVERT REHAB 2 - DRAINAGE SYSTEM RESTORATION-IN MONTEREY COUNTY AT VARIOUS LOCATIONS FROM 0.4 MILE SOUTH OF LUCIA TO 0.5 MILE SOUTH OF JOHN LITTLE STATE RESERVE	Pacific Ocean	TBD	401	No long term impacts anticipated	0.50	0.00	0.00	WPCP	E	10/21/21	2/15/23	9/27/23	2/20/24
154	05-1K010	MON	1	27.5	27.7	3	ORIENT EXPRESS TIEBACK WALL - CONSTRUCT TIEBACK WALL, RESOTRE ROADWAY AND FACILITIES, PLACE WATER POLLUTION CONTROL BMPS, EROSION CONTROL, AND REQUIRED MITIGATION, AND PROVIDE TEMPORARY TRAFFIC CONTROL.-IN MONTEREY COUNTY NEAR LUCIA 0.8 MILE SOUTH OF BIG CREEK BRIDGE	Pacific Ocean	TBD	TBD	No long term impacts anticipated	0.80	0.10	0.00	WPCP	E	10/21/21	2/15/23	9/27/23	20/20/24

**Table 6-1: District 5 Anticipated Project Development and Construction Schedule**

No.	EA	Project Location					Project Description <sup>1,2</sup>	Water Bodies Within or Adjacent to Project Limits <sup>3</sup>	Dredge and Fill Activities (Y/N/NA) <sup>4</sup>	Other Regional Water Board Permits Required <sup>5</sup>	Potential and Actual Impacts of Project's Discharge <sup>6</sup>	Disturbed Soil Area (acres)	Area of New Impervious Surface (acres)	Percentage of New Impervious Surface to Existing Impervious Surface	Description of Construction Controls (SWPPP/WPCP/TBD) <sup>7</sup>	Post-Construction Treatment Control Type, Quantity <sup>8</sup>	Anticipated Project Delivery Schedule		Construction Period	
		Co.	Route	Begin PM	End PM	RB <sup>9</sup>											PA&ED Date	PS&E Date	Start Date	End Date
155	05-1K050	MON	1	8.5	9.2	3	MUD CREEK PERMANENT RESTORATION - COASTAL DEVELOPMENT PERMIT REQUIREMENTS-IN MONTEREY COUNTY NEAR GORDA 0.6 MILE NORTH OF ALDER CREEK BRIDGE	TBD	TBD	TBD	TBD	TBD	TBD	TBD	TBD	TBD	12/17/20	4/22/22	11/21/22	4/17/23
156	05-1K050	MON	1	55.7	55.9	3	LITTLE SUR MICROPILE WALL - CONSTRUCT MICROPILE WALL, RESTORE ROADWAY AND FACILITIES, PLACE WATER POLLUTION CONTROL BMPS, EROSION CONTROL AND REQUIRED MITIGATION AND PROVIDE TEMPORARY TRAFFIC CONTROL-IN MONTEREY COUNTY NEAR BIG SUR 0.1 MILE SOUTH OF LITTLE SUR RIVER BRIDGE	Little Sur River, Pacific Ocean	TBD	TBD	No long term impacts anticipated	0.50	0.50	0.00	WPCP	E	5/26/20	9/15/21	4/28/22	9/16/22
157	05-1K060	SCR	9	10.8	10.8	3	PM 10.8 - CONSTRUCT VIADUCT WALL EXTENSION, RESTORE ROADWAY AND FACILITIES, PLACE WATER POLLUTION CONTROL BMPS-IN SANTA CRUZ COUNTY NEAR BROOKDALE 0.3 MILE SOUTH OF WESTERN AVENUE	San Lorenzo River	TBD	TBD	No long term impacts anticipated	0.50	0.50	0.00	WPCP	E	3/10/20	2/19/21	7/14/21	1/19/23
158	05-1K070	SCR	17	8.2	8.2	3	JARVIS SLIDE ROCK FENCE - CONSTRUCT VIADUCT WALL EXTENSION, RESTORE ROADWAY AND FACILITIES, PLACE WATER POLLUTION CONTROL BMPS, EROSION CONTROL, AND REQUIRED MITIGATION, AND PROVIDE TEMPORARY TRAFFIC CONTROL-IN SANTA CRUZ COUNTY NEAR BEN LOMOND 0.6 MILE SOUTH OF CALIFORNIA DRIVE	Carbonera Creek,	TBD	TBD	No long term impacts anticipated	0.25	0.25	0.00	WPCP	E	4/23/20	8/13/21	3/28/22	8/16/22
159	05-1K080	MON	1	45.4	45.8	3	PFEIFFER CANYON MITIGATION - CONSTRUCT MICROPILE WALL, RESTORE ROADWAY AND FACILITIES, PLACE WATER POLLUTION CONTROL BMPS, EROSION CONTROL AND REQUIRED MITIGATION AND PROVIDE TEMPORARY TRAFFIC CONTROL-IN MONTEREY COUNTY IN BIG SUR AT PFEIFFER CANYON BRIDGE	TBD	TBD	TBD	TBD	TBD	TBD	TBD	TBD	TBD	4/23/20	8/13/21	3/28/22	8/16/22

**Table 6-1: District 5 Anticipated Project Development and Construction Schedule**

No.	EA	Project Location					Project Description <sup>1,2</sup>	Water Bodies Within or Adjacent to Project Limits <sup>3</sup>	Dredge and Fill Activities (Y/N/NA) <sup>4</sup>	Other Regional Water Board Permits Required <sup>5</sup>	Potential and Actual Impacts of Project's Discharge <sup>6</sup>	Disturbed Soil Area (acres)	Area of New Impervious Surface (acres)	Percentage of New Impervious Surface to Existing Impervious Surface	Description of Construction Controls (SWPPP/WPCP/TBD) <sup>7</sup>	Post-Construction Treatment Control Type, Quantity <sup>8</sup>	Anticipated Project Delivery Schedule		Construction Period	
		Co.	Route	Begin PM	End PM	RB <sup>9</sup>											PA&ED Date	PS&E Date	Start Date	End Date
160	05-1K090	MON	1	21.75	21.75	3	PAUL'S SLIDE 2 - REMOVE SLIDE MATERIAL, CONSTRUCT RETAINING WALL, RESTORE ROADWAY AND FACILITIES, PLACE WATER POLLUTION CONTROL BMPS, EROSION CONTROL, AND REQUIRED MITIGATION, AND PROVIDE TEMPORARY TRAFFIC CONTROL-IN MONTEREY COUNTY NEAR LUCIA 0.35 MILE NORTH OF PITKIN'S BRIDGE	TBD	TBD	TBD	TBD	TBD	TBD	TBD	TBD	TBD	10/21/21	2/15/23	9/27/23	2/1/24
161	05-1K100	SB	166	8.13	8.13	3	MILLER STREET SIGNAL MODIFICATION - MODIFY SIGNAL, RECONSTRUCT CURB RAMPS-IN SANTA BARBARA COUNTY IN SANTA MARIA AT MILLER STREET	NONE	TBD	TBD	TBD	0.00	0.00	0.00	WPCP	E	3/13/19	12/29/20	8/11/21	12/7/21
162	05-1K120	SCR	9	1.00	4.00	3	PM 1.0 AND 4.0 VIADUCT - CONSTRUCT SIDE-HILL VIADUCT, RESTORE ROADWAY AND FACILITIES, PLACE WATER POLLUTION CONTROL BMPS, EROSION CONTROL, AND REQUIRED MITIGATION AND PROVIDE TEMPORARY TRAFFIC CONTROL.-IN SANTA CRUZ COUNTY NEAR SANTA CRUZ 0.5 MILE NORTH OF VERNON STREET	San Lorenzo River	TBD	401	TBD	0.50	0.25	0.00	WPCP	E	3/24/21	4/422	10/5/22	7/15/25
163	05-1K130	SCR	9	19.9	19.9	3	PM 19.97 HAIRPIN TIEBACK - CONSTRUCT TIEBACK WALL, RESTORE ROADWAY AND FACILITIES, PLACE WATER POLLUTION CONTROL BMPS, EROSION CONTROL AND REQUIRED MITIGATION AND PROVIDE TEMPORARY TRAFFIC CONTROL.-IN SANTA CRUZ COUNTY NEAR BOULDER CREEK 1.1 MILE SOUTH OF 236/9 JUNCTION	San Lorenzo River	Y	N/A	No long term impacts anticipated	0.25	0.01	TBD	WPCP	E	5/15/19	11/13/20	4/13/21	10/6/22



**Table 6-1: District 5 Anticipated Project Development and Construction Schedule**

No.	EA	Project Location					Project Description <sup>1,2</sup>	Water Bodies Within or Adjacent to Project Limits <sup>3</sup>	Dredge and Fill Activities (Y/N/NA) <sup>4</sup>	Other Regional Water Board Permits Required <sup>5</sup>	Potential and Actual Impacts of Project's Discharge <sup>6</sup>	Disturbed Soil Area (acres)	Area of New Impervious Surface (acres)	Percentage of New Impervious Surface to Existing Impervious Surface	Description of Construction Controls (SWPPP/WPCP/TBD) <sup>7</sup>	Post-Construction Treatment Control Type, Quantity <sup>8</sup>	Anticipated Project Delivery Schedule		Construction Period	
		Co.	Route	Begin PM	End PM	RB <sup>9</sup>											PA&ED Date	PS&E Date	Start Date	End Date
164	05-1K140	SCR	9	15	15	3	PM 15 SOLDIER PILE WALL - CONSTRUCT SOLDIER PILE WALL, RESTORE ROADWAY AND FACILITIES, PLACE WATER POLLUTION CONTROL BMPS, EROSION CONTROL AND REQUIRED MITIGATION AND PROVIDE TEMPORARY TRAFFIC CONTROL.-IN SANTA CRUZ COUNTY NEAR BOULDER CREEK AT SPRING CREEK ROAD	San Lorenzo River	Y	TBD	No long term impacts anticipated	0.42	0.00	0.00	WPCP	E	12/3/18	11/21/19	4/13/20	1/26/22
165	05-1K150	TBD	TBD	TBD	TBD	3	DISTRICT WIDE ADA CURB RAMPS - ADDRESS ADA COMPLIANT PEDESTRIAN ACCESS-IN VARIOUS LOCATIONS IN THE COUNTIES OF SANTA BARBARA, SAN LUIS OBISPO, MONTEREY AND SANTA CRUZ	N/A	TBD	TBD	TBD	TBD	TBD	TBD	TBD	TBD	11/16/20	3/11/22	10/20/22	3/16/23
166	05-31600	MON	156	1.80	4.80	3	ROUTE 156 WEST CORRIDOR PROJECT - WIDEN TO 4-LN DIVIDED EXPRESSWAY AND BUILD INTERCHANGES - ON RTE 156 NEAR THE CITY OF CASTROVILLE FROM W OF CASTROVILLE BLVD TO THE RTE US 101/156 SEP AND ON RTE US 101 FM 0.1 MI N OF PESANTE RD TO 0.2 MI N OF MESSIK RD	Moro Cojo Slough 303(d), Prunedale Creek	Y	401	No long term impacts anticipated	314.00	58.20	96.50	SWPPP	C	2/8/19	7/22/23	2/6/24	2/4/28
167	05-33078	SLO	46	46.00	50.2	3	WHITLEY 2B - CONVERT TO 4-LANE EXPRESSWAY - NEAR SHANDON FROM 0.2 MILE EAST OF MCMILLAN CANYON ROAD TO 0.4 MILE WEST OF LUCY BROWN ROAD	Cholame Creek 303(d), Estrella River	Y	401	No long term impacts anticipated	212.00	24.00	33.00	SWPPP	DPPIA-30	5/19/06	10/12/15	2/25/16	4/30/19
168	05-3307A	SLO	46	49.7	54.6	3	CHOLAME SEGMENT - CONVERT TO A 4 LANE EXPRESSWAY - IN SAN LUIS OBISPO CO, NEAR SHANDON, FROM 0.2 MILES WEST OF SHANDON SAFETY ROADSIDE REST AREA TO 0.5 MILE EAST OF JACK RANCH CAFE.	Cholame Creek	Y	401	No long term impacts anticipated	TBD	TBD	TBD	SWPPP	C	5/9/06	4/15/20	12/3/20	2/2/23

**Table 6-1: District 5 Anticipated Project Development and Construction Schedule**

No.	EA	Project Location					Project Description <sup>1,2</sup>	Water Bodies Within or Adjacent to Project Limits <sup>3</sup>	Dredge and Fill Activities (Y/N/NA) <sup>4</sup>	Other Regional Water Board Permits Required <sup>5</sup>	Potential and Actual Impacts of Project's Discharge <sup>6</sup>	Disturbed Soil Area (acres)	Area of New Impervious Surface (acres)	Percentage of New Impervious Surface to Existing Impervious Surface	Description of Construction Controls (SWPPP/WPCP/TBD) <sup>7</sup>	Post-Construction Treatment Control Type, Quantity <sup>8</sup>	Anticipated Project Delivery Schedule		Construction Period	
		Co.	Route	Begin PM	End PM	RB <sup>9</sup>											PA&ED Date	PS&E Date	Start Date	End Date
169	05-34490	SBT	156	3.00	R8.20	3	SAN BENITO ROUTE 156 IMPROVEMENT PROJECT - WIDEN 2 TO 4 LANES SAN JAUN BAUTISTA 4 LANE SAN JAUN BAUTISTA 4 LANE - ON STATE ROUTE 156 IN SAN BENITO COUNTY, IN AND NEAR SAN JUAN BAUTISTA FROM THE ALAMEDA ST TO 0.2 MI EAST OF FOURTH STREET/BUSINESS ROUTE 156 NEAR HOLLISTER	San Juan Creek 303(d)	Y	N/A	No long term impacts anticipated	162.00	47.00	100.00	SWPPP	C	10/10/08	12/12/19	7/23/20	8/9/22
170	05-39610	SB	192	15.4	15.6	3	ARROYO PARIDA BRIDGE REPLACEMENT - REPLACE BRIDGE (SCOUR) ARROYO PARIDA BRIDGE REPLACEMENT ARROYO PARIDA BRIDGE REPLACEMENT - IN SB CO NEAR CARPINTERIA AT ARROYO PARIDA CREEK BR #51-0113. REPLACE BRIDGE (SCOUR)	Arroyo Parida Creek (AKA Arroyo Paredon Creek) 303(d)	Y	N/A	No long term impacts anticipated	1.60	0.33	64.70	SWPPP	E	6/29/09	1/21/20	8/7/20	12/23/22
171	05-4482U	SB	101	2.2	3.3	3	LINDEN & CASITAS PASS INTERCHANGES - RECONSTRUCT INTERCHANGES (2) AND REPLACE CARPINTERIA CR BR LINDEN & CASITAS PASS IC - ON ROUTE 101 IN SANTA BARBARA COUNTY IN CARPINTERIA FROM 0.2 MILE SOUTH OF CARPINTERIA CREEK BRIDGE TO 0.3 MILE NORTH OF LINDEN AVENUE OVERCROSSING	Franklin Creek 303(d), Carpinteria Creek 303(d), Carpinteria Marsh	Y	401	No long term impacts anticipated	21.70	1.79	40.00	SWPPP	DPPIA-5	7/20/10	12/30/15	7/15/16	12/12/21
172	05-48540	SBT	25	51.5	60.1	3	ROUTE 25 WIDENING PROJECT AND ROUTE ADOPTION HOLLISTER TO GILROY - WIDEN FROM 2C TO 4E (SBT-25- 51.5/55.3) AND ROUTE ADOPTION (SBT-25-51.5 TO SCL-25-2.6) - NEAR HOLLISTER & GILROY ON RTE 25 IN SBT & SCL COS (SBT-25-51.5/60.1) (SBT-156-R10.5/R12.2) (SCL-25-0.0/2.6)	Carnadero Creek, Pajaro River 303(d)	Y	401	No long term impacts anticipated	544.10	126.00	TBD	SWPPP	C	7/8/16	7/26/18	9/7/22	8/29/25

Table 6-1: District 5 Anticipated Project Development and Construction Schedule

No.	EA	Project Location					Project Description <sup>1,2</sup>	Water Bodies Within or Adjacent to Project Limits <sup>3</sup>	Dredge and Fill Activities (Y/N/NA) <sup>4</sup>	Other Regional Water Board Permits Required <sup>5</sup>	Potential and Actual Impacts of Project's Discharge <sup>6</sup>	Disturbed Soil Area (acres)	Area of New Impervious Surface (acres)	Percentage of New Impervious Surface to Existing Impervious Surface	Description of Construction Controls (SWPPP/WPCP/TBD) <sup>7</sup>	Post-Construction Treatment Control Type, Quantity <sup>8</sup>	Anticipated Project Delivery Schedule		Construction Period	
		Co.	Route	Begin PM	End PM	RB <sup>9</sup>											PA&ED Date	PS&E Date	Start Date	End Date
173	05-49281_	SLO	1	67.20	67.20	3	PIEDRAS BLANCAS OFF-SITE LANDSCAPE & MITIGATION - LANDSCAPE PLANTING AND WETLAND MITIGATION - IN SAN LUIS OBISPO COUNTY ABOUT 9 MILES NORTH OF SAN SIMEON, FROM PIEDRAS BLANCAS LIGHTHOUSE ROAD TO ARROYO DE LA CRUZ BRIDGE.	Arroyo de la Cruz	N	NA	No long term impacts anticipated	20.50	0.00	0.00	SWPPP	E	8/11/10	2/1/17	7/14/17	9/22/23
174	05-49282	SLO	1	64.00	66.90	3	PIEDRAS BLANCAS ON-SITE LANDSCAPE & MITIGATION - LANDSCAPE PLANTING AND WETLAND MITIGATION - IN SAN LUIS OBISPO COUNTY ABOUT 9 MILES NORTH OF SAN SIMEON, FROM PIEDRAS BLANCAS LIGHTHOUSE ROAD TO ARROYO DE LA CRUZ BRIDGE.	Arroyo Del Corral, Arroyo De La Cruz, Arroyo Del Oso, Pacific Ocean	N	NA	No long term impacts anticipated	1.40	0.00	0.00	WPCP	E	8/11/10	1/23/18	6/28/18	5/25/22
175	05-49285	SLO	1	66.9	67.2	3	PIEDRAS BLANCAS OFFSITE MITIGATION PROJECT - PLANTING, WETLAND AND CRLF MITIGATION - IN SAN LUIS OBISPO COUNTY NEAR SAN SIMEON FROM THE ARROYO DE LA CRUZ BRIDGE TO 0.3 MILE NORTH OF THE ARROYO DE LA CRUZ BRIDGE	Arroyo de la Cruz	N	NA	No long term impacts anticipated	0.00	0.00	0.00	WPCP	E	8/11/10	7/25/19	3/1620	3/11/26

Treatment Control Status Legend	
<b>BMP Device Types:</b>	
BIOSTP	Biofiltration Strips
BIOSWL	Biofiltration Swales
C	Under Consideration
CNTBOX	Gross Solids Removal Devices (Inclined Screen)
DETBAS	Detention Basins
DPPIA	Design Pollution Prevention Infiltration Area*
DWFD	Dry Weather Flow Diversion
E	Exempt
INDBAS	Infiltration Basins*
INDTRE	Infiltration Trench*
LNGTBE	Gross Solids Removal Devices (Linear Radial)
MCTT	Multi-Chambered Treatment Trains
MF-ADS	Austin Sand Filters
MF-DSF	Delaware Sand Filters
Other	Other (specify type)
SA	Stabilization Areas
TRCSND	Traction Sand Traps
WETBAS	Wet Basins

\* Water quality volume infiltrates within the right of way. (When this is demonstrated for at least 90% of the WQV, other types of treatment BMPs are not considered unless there is a location-specific requirement.)

Table 6-2 lists the planned maintenance projects that will disturb soil.

Table 6-2: District 5 Anticipated Significant Road Maintenance Activities

No.	Co.	Route	Beg PM	End PM	Regional Board	Description	Water Bodies Affected <sup>10</sup>	Other Regional Water Board Permits Required <sup>11</sup>	Potential and Actual Impacts of Project's Discharge <sup>12</sup>	Disturbed Soil Area (acres)	Area of New Impervious Surface (acres)	Percentage of New Impervious Surface to Existing Impervious Surface	Description of Construction Controls (SWPPP/WPCP/ TBD/NA) <sup>13</sup>	Post-Construction Treatment Control Type, Quantity <sup>14</sup>	Start Date	Completion Date
1	SCR	1, 9, 17, 35, 129, 152	Within County limits	Within County limits	3	Drain Cleaning, Pavement Repair, Shoulder Maintenance, Slope Maintenance	Various	N/A	N/A	N/A	N/A	N/A	N/A	N/A	7/1/19	6/30/20
2	SBT	25, 101, 129, 146, 156	Within County limits	Within County limits	3	Drain Cleaning, Pavement Repair, Shoulder Maintenance, Slope Maintenance	Various	N/A	N/A	N/A	N/A	N/A	N/A	N/A	7/1/19	6/30/20
3	MON	1, 25, 68, 101, 146, 156, 183, 198, 218	Within County limits	Within County limits	3	Drain Cleaning, Pavement Repair, Shoulder Maintenance, Slope Maintenance	Various	N/A	N/A	N/A	N/A	N/A	N/A	N/A	7/1/19	6/30/20
4	SLO	1, 33, 41, 46, 58, 101, 166, 227, 229	Within County limits	Within County limits	3	Drain Cleaning, Pavement Repair, Shoulder Maintenance, Slope Maintenance	Various	N/A	N/A	N/A	N/A	N/A	N/A	N/A	7/1/19	6/30/20
5	SB	1, 33, 101, 135, 144, 150, 154, 166, 192, 217, 225, 246	Within County limits	Within County limits	3	Drain Cleaning, Pavement Repair, Shoulder Maintenance, Slope Maintenance	Various	N/A	N/A	N/A	N/A	N/A	N/A	N/A	7/1/19	6/30/20
6	SCR	1, 9, 17, 35, 129, 152	Within County limits	Within County limits	3	Drain Cleaning, Pavement Repair, Shoulder Maintenance, Slope Maintenance	Various	N/A	N/A	N/A	N/A	N/A	N/A	N/A	7/1/19	6/30/20

<sup>10</sup> Receiving waters within or adjacent to maintenance activity designated as “303(d) (constituent type).” Activity adjacent to Drinking Water Reservoir or Ground Water Recharge Facilities designated as “DW.”

<sup>11</sup> Regional Water Board Permits required other than Construction General Permit, such as Clean Water Act Section 401 water quality certification, Waiver of Discharge Requirements, Dewatering Permits, Bridge Painting WDRs, etc.

<sup>12</sup> This information may come from the Water Quality Assessment Report prepared for each project, a Water Quality Technical Memorandum, or other document that evaluates the water quality impacts of a project.

<sup>13</sup> A description of the Construction Controls is available in the project’s Storm Water Pollution Prevention Plan (SWPPP), Water Pollution Control Plan (WPCP), is To Be Determined (TBD) if the Disturbed Soil Area is unavailable or is Not Applicable (NA) because there is no Disturbed Soil Area associated with the project.

<sup>14</sup> Treatment Control Status identified by: device type/number of devices, exempt (“E”), or under consideration (“C”). See Treatment Control Status Legend below for device type abbreviations.

Treatment Control Status Legend	
<b>BMP Device Types:</b>	
BIOSTP	Biofiltration Strips
BIOSWL	Biofiltration Swales
C	Under Consideration
CNTBOX	Gross Solids Removal Devices (Inclined Screen)
DETBAS	Detention Basins
DPPIA	Design Pollution Prevention Infiltration Area*
DWFD	Dry Weather Flow Diversion
E	Exempt
INDBAS	Infiltration Basins*
INDTRE	Infiltration Trench*
LNGTBE	Gross Solids Removal Devices (Linear Radial)
MCTT	Multi-Chambered Treatment Trains
MF-ADS	Austin Sand Filters
MF-DSF	Delaware Sand Filters
Other	Other (specify type)
SA	Stabilization Areas
TRCSND	Traction Sand Traps
WETBAS	Wet Basins

\* Water quality volume infiltrates within the right of way. (When this is demonstrated for at least 90% of the WQV, other types of treatment BMPs are not considered unless there is a location-specific requirement.)

Table 6-3 lists the District’s planned monitoring activities.

***Table 6-3: District 5 Monitoring Activities***

<b>Statewide Monitoring Program Activities</b>	
<b><i>ASBS Core Monitoring Sites</i></b>	
<ul style="list-style-type: none"><li>• No monitoring is proposed for this fiscal year.</li></ul>	
<b><i>ASBS Ocean Receiving Water and Reference Monitoring Sites</i></b>	
<ul style="list-style-type: none"><li>• No monitoring is proposed for this fiscal year.</li></ul>	

This page was intentionally left blank.



## **7     Region-Specific Activities**

---

Region-specific requirements are not applicable to District 5.

This page was intentionally left blank.

## **8 DWP Noncompliance and Improvements**

---

Section 8 of the DWP identifies the deviations that occurred from the prior DWP that resulted or will result in noncompliance with the Conformed NPDES Permit or SWMP. In addition, it describes the improvements that were performed in response to the incidents of noncompliance. No DWP noncompliance incidents or improvements were identified for District 5.

This page was intentionally left blank.