

**California Department of Transportation
Stormwater Management Program
District 6 Work Plan**

Fiscal Year

2019-2020

CTSW-RT-18-379.06.2



California Department of Transportation
Division of Environmental Analysis
Stormwater Management Program
2015 E Shields #100, Fresno, California 93726

<http://www.dot.ca.gov/hq/env/stormwater>

October 1, 2018



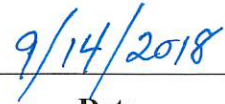
For individuals with sensory disabilities, this document is available in alternate formats upon request. Please call or write to the Stormwater Liaison, Caltrans Division of Environmental Analysis, MS-27, P.O. Box 942874, Sacramento, CA 94274-0001, (916) 653-8896 Voice, or dial 711 to use a relay service.

**California Department of Transportation
District 6 Certification
District Work Plan 2019-20**

I certify under penalty of law that this document and all attachments were prepared under my direction or supervision in accordance with a system designed to assure that qualified personnel properly gather and evaluate the information submitted. Based on my inquiry of the person or persons who manage the system, or those persons directly responsible for gathering the information, the information submitted is to the best of my knowledge and belief, true, accurate, and complete. I am aware that there are significant penalties for submitting false information, including the possibility of fine and imprisonment of knowing violations. [40 CFR 122.22(d)]



Sharri Bender Ehlert



Date

District 6

This page was intentionally left blank.

Table of Contents

1	Introduction	1-1
2	District Personnel and Responsibilities	2-1
3	District Facilities and Water Bodies	3-1
4	Drinking Water Reservoirs and Recharge Facilities.....	4-1
5	Slopes Prone to Erosion	5-1
6	Implementation.....	6-1
7	Region-Specific Activities	7-1
8	DWP Noncompliance and Improvements	8-1

Figures

Figure 2-1: District 6 Organizational Chart	2-9
Figure 5-1: District 6 2018 Areas Prone to Erosion.....	5-3

Tables

Table 2-1: District 6 Stormwater Personnel and Responsibilities	2-7
Table 2-2: District 6 Signatory Authority for Key Documents.....	2-8
Table 4-1: District 6 Drinking Water Reservoirs and Recharge Facilities	4-1
Table 5-1: District 6 Inventory of Road Segments Prone to Erosion.....	5-1
Table 6-1: District 6 Anticipated Project Development and Construction Schedule.....	6-3
Table 6-2: District 6 Anticipated Significant Road Maintenance Activities	6-35
Table 6-3: District 6 Monitoring Activities	6-37

This page was intentionally left blank.

General Information about the District Work Plan

The District Work Plans (DWPs) describe the organization of each California Department of Transportation (Caltrans) District's stormwater program and outline the planned stormwater activities for the upcoming fiscal year. They are prepared and submitted on October 1 each year. Since the DWP is District-specific, each Regional Water Quality Control Board (RWQCB or Regional Board) is provided a copy of the DWPs relevant to their jurisdiction.

This DWP presents information about District 6's water bodies, Best Management Practices (BMPs), and monitoring programs. It describes how the District will specifically implement the requirements of the Statewide Stormwater Management Plan (SWMP) during fiscal year 2019-20. Implementation activities will be conducted in accordance with the procedures presented in the SWMP. In addition, this DWP fulfills Provision E.3.b of the *National Pollutant Discharge Elimination System (NPDES) Statewide Storm Water Permit Waste Discharge Requirements (WDRs) for State of California Department of Transportation* (Order Number 2012-0011-DWQ, NPDES Number CAS000003, Effective July 1, 2013) (NPDES Permit). The NPDES Permit was amended by Orders WQ 2014-0006-EXEC (January 17, 2014), WQ 2014-0077-DWQ (May 20, 2014), and WQ 2015-0036-EXEC (April 7, 2015). A conformed NPDES Permit was issued on April 7, 2015 (Conformed NPDES Permit), available on the California State Water Resources Control Board's (SWRCB) website:

http://www.waterboards.ca.gov/board_decisions/adopted_orders/water_quality/2012/wq2012_0011_dwq_conformed_signed.pdf

The NPDES Permit was further amended by Order WQ 2017-0026-EXEC on November 27, 2017. This permit amendment describes the primary modifications to several Areas of Special Biological Significance (ASBS) sampling locations and incorporation of compliance units crediting due to the SWRCB's adoption of the trash provisions on April 7, 2015 (effective on December 3, 2015).

The DWP's eight sections describe how the District plans to implement the stormwater program during the upcoming fiscal year. Section 1 introduces the DWP, describes its organizational structure, and identifies the key goals and commitments made by the District for the upcoming fiscal year. Section 2 describes the personnel with stormwater operations responsibilities in the District. In Section 3, the District's facilities are listed and categorized by type and location. Section 4 describes and identifies the high-risk locations where spills from the District's owned rights-of-way, roadways or facilities can discharge directly to a drinking water reservoir or ground water recharge facility. In Section 5, the District's road segments that are prone to erosion are identified. Section 6 summarizes the District's implementation activities, including projects that will be in the design and construction phases during the fiscal year, maintenance projects, and planned stormwater monitoring activities. Section 7 identifies the planned region-specific activities (if applicable) to address the requirements listed in Attachment V of the Conformed NPDES Permit. Section 8 identifies deviations that occurred from the prior DWP that resulted or will result in noncompliance with the Conformed NPDES Permit or SWMP and describes improvements performed in response to the incidents of noncompliance.

District Goals and Commitments

The District will continue to implement the current SWMP and use the Stormwater Quality Handbooks and Guidance to ensure that every construction project and all maintenance activities implement the appropriate combination of temporary and permanent BMPs. The District will participate with the Division of Environmental Analysis to evaluate and implement necessary process improvements to the stormwater program, and the District will implement any improvements deemed necessary for permit and program compliance. The District will continue to implement the requirements of the Construction

General Permit, State Water Resources Control Board (SWRCB) Order No. 2009-0009-DWQ, including electronic submittals of Project Registration Documents via the SWRCB's Stormwater Multiple Application and Report Tracking System (SMARTS). The District will continue to implement the requirements of the NPDES Permit. The District's stormwater program will continue its compliance-monitoring practices, enhanced BMP implementation, stormwater documentation tracking and reporting, and partnering with various local agencies.

The District will continue its commitment to partner with the Fresno Metropolitan Flood Control District (FMFCD) and the Partners for a Clean Community group to conduct public education and outreach on water quality issues within the surrounding communities. The Partners for a Clean Community group was established as a result of a former cooperative agreement, and its members include Caltrans, FMFCD, the City of Fresno, the City of Clovis and the County of Fresno. The partnership reduced Public Service Announcement (PSA) development costs and advertising costs to increase the frequency of stormwater pollution prevention messages reaching the community. The District will work towards establishing a new Cooperative Agreement with FMFCD to continue public outreach and education efforts.

Another commitment for the District is to continue working with the Central Valley Water Awareness Committee (CVWAC). District 6 has regularly attended meetings with the CVWAC as a guest since 2007. Members include the Association of Metropolitan Water Agencies, Bakman Water Company, City of Clovis Public Utilities Department, City of Fresno Water and Wastewater Divisions, Fresno Irrigation District, FMFCD, Kings River Conservation District, and Malaga County Water District. The CVWAC promotes awareness of safe and reliable water while encouraging sound water conservation and pollution prevention practices. The CVWAC produces an annual public education campaign to promote Water Awareness Month each May, along with other events and activities throughout the year within Fresno County and the Central San Joaquin Valley.

The District will evaluate training needs to successfully implement and comply with the requirements of the Permits and SWMP. The District will provide the Qualified Stormwater Pollution Prevention Plan (SWPPP) Developer Training Course and stormwater training modules for implementation of the Construction General Permit, as needed. The Project Planning and Design Guide (PPDG) Online Training module is available on Caltrans' website and provides information on evaluating and incorporating stormwater requirements throughout each phase of project delivery and the overall stormwater design program.

The District NPDES/Stormwater unit will increase communication, collaboration and coordination with the District's Divisions of Planning and Local Assistance, Design, Maintenance, Construction, Landscape Architecture, Right of Way, Hydraulics, and Encroachment Permits by holding meetings (and focused meetings as needed), to ensure the implementation and compliance with the SWMP and stormwater policies.

The District is also collaborating with our media partners to use media outreach to bring attention to stormwater issues/pollutants under the Protect Every Drop Campaign. Media spots will focus on how to reduce highway pollution and highlight key vehicle pollutants as they relate to vehicle maintenance.

The District will continue to implement the Enforcement Response Program (ERP), which is part of Caltrans' overall stormwater quality assurance effort to ensure compliance with the MS4 Permit, the Statewide Construction General Permit, and Statewide Industrial General Permit. The ERP ensures that appropriate corrective actions are taken in response to deficiencies found during inspection of construction activities, maintenance activities, maintenance facilities and third-party activities in the Caltrans right-of-way. Caltrans strives to identify and resolve compliance issues in a timely manner at the lowest possible management level.

2 District Personnel and Responsibilities

Section 2 of the DWP describes positions, addresses, and telephone numbers of personnel with responsibilities for stormwater operations within the District. This section also identifies positions having signatory authority for various notifications or documents required for submittal by a District (e.g., Project Registration Documents, including Notices of Intents or NOIs).

Central Region NPDES Stormwater Coordinator

The Central Region NPDES Stormwater Coordinator (CR-SWC) is the manager in charge of all stormwater activities in Districts 5, 6, and 10. The CR-SWC is responsible for establishing an effective stormwater program and communicating, collaborating, and coordinating stormwater activities with Headquarters and other District Program Managers (Division Chiefs). The CR-SWC provides support, direction, and guidance to the District Stormwater Coordinator (DSWC). The responsibilities of the CR-SWC include:

- Coordinating Central Region operations regarding stormwater compliance.
- Coordinating District efforts within the Central Region to achieve compliance with the NPDES Permit and SWMP.
- Serving as a resource to the District Directors on NPDES/Stormwater Quality issues.
- Serving as the ultimate signatory authority in the Region for all compliance documents (Stormwater Data Reports) and commitments regarding stormwater management. Further coordination will occur regarding the transfer of signatory authority to Construction staff for NOI filing via SMARTS, including identification of necessary changes in programmatic roles and the responsibility assignments consistent with the NPDES Permit.
- Serving as the primary liaison and single point of contact on stormwater and waste discharge issues between the Districts and Headquarters, the SWRCB and Regional Boards, U.S. Environmental Protection Agency, and other agencies.
- Assisting with the preparation and review of the Rapid Stream Stability Assessment documentation for projects subject to that requirement under the NPDES Permit.
- Ensuring the accuracy and adequacy of the stormwater workload allocations for each fiscal year.
- Coordinating and tracking resource distributions, workloads, and projects within the Central Region Districts.
- Providing guidance and direction necessary to develop strategies for addressing regulations and mandates on stormwater waste discharges set forth by federal, state, and local regulatory agencies.
- Reconciling disputes and disagreements on policies, activities, assignments, and responsibilities regarding stormwater issues.
- Continue assisting and supporting Construction staff with SMARTS input.
- Establishing impartial and equitable decisions that benefit Caltrans in attaining the objectives of the Stormwater Program.
- Acting as the District Program Advisor for the 335 SHOPP Program. The 335 SHOPP Program funds projects to comply with TMDLs and other water quality orders.

- Acting as an Approved Signatory, designated by the Duly Authorized Representative (District Director), for electronic report and data submittals in SMARTS for the Caltrans MS4 Permit.

District NPDES Stormwater Coordinator

The District NPDES Stormwater Coordinator (DSWC) is the principal person responsible for the day-to-day implementation of the NPDES Permit and SWMP at the District level. Under the general direction of the CR-SWC, the DSWC is responsible for identifying issues and developing recommendations related to stormwater quality, regulated wastes, and other environmental issues that affect their respective District. The specific stormwater tasks for which the DSWC is responsible include the following:

- With the assistance of the CR-SWC, providing guidance and assistance for the preparation, development and implementation of a comprehensive District Stormwater Program, as described in the DWP.
- Providing oversight of activities related to notification procedures for reuse of soil containing lead in accordance with variance issues by the Department of Toxic Substances Control (DTSC).
- Assisting the District functional units in prioritizing, monitoring, tracking, and evaluating stormwater resources, activities, and operations.
- Implementing a quality assurance and quality control program for monitoring the activities of the District functional units, in order to ensure that the conditions of the NPDES Permit, SWMP and the DWP are implemented properly.
- Representing the District at the Stormwater Advisory Teams (SWATs) identified in the SWMP.
- Monitoring and evaluating the stormwater activities and procedures of municipalities, developers and other agencies.
- Working as a leader and chairperson of the District Stormwater Functional Team Committee.
- Assisting with the determination and evaluation of stormwater impacts during California Environmental Quality Act and/or National Environmental Policy Act (CEQA/NEPA) screening.
- Evaluating and recommending permanent control and treatment measures to address project stormwater impacts.
- Assisting with the identification of costs related to water pollution control, non-stormwater discharges and waste management in program documents.
- Assisting with the development of new specifications, details and guidance materials related to non-stormwater discharges and waste management.
- Assisting with the preparation of contract specifications and estimates to address the development of Stormwater Pollution Prevention Plans (SWPPPs)/Water Pollution Control Programs (WPCP).
- Assisting with the preparation of the contract Plans, Specifications and Estimates (PS&E) requiring permanent stormwater control measures to improve or minimize water quality impacts.
- Determining project Risk Level during the project's planning, project approval and environmental document (PA&ED) and PS&E phases.
- Assisting the District's Encroachment Permits Branch in evaluating water quality impacts and requirements of encroachment permit applications.
- Coordinating the public outreach and education effort for the District with the assistance of the CR-SWC.

- Assisting the District and Headquarters with tracking and incorporation of BMPs to comply with Attachment IV of the Caltrans NPDES Permit (TMDL Compliance Units).
- Participating in the Construction to Maintenance 90% walkthrough and handoff for projects incorporating permanent stormwater treatment facilities per Construction Policy Bulletin (CPB) 13-1.
- Acting as an Approved Signatory, designated by the Duly Authorized Representative (District Director), for electronic report and data submittals in SMARTS for the Caltrans MS4 Permit.

Environmental Engineering Coordinator

The Environmental Division provides oversight and coordination activities on water quality issues throughout the life of the project from the Project Initiation Document phase through the Operation and Maintenance phase. In order to enhance project delivery and increase efficiency, the Environmental Water Quality Specialist (EWQS) will consult with the NPDES/Stormwater Branch on project activities which have a direct relationship to the NPDES Permit, potential enforcement actions and stormwater quality issues. The EWQS will prepare or review and comment on the following issues:

- Water Quality section of the Environmental Scoping document; and
- Water Quality Reports to be included in environmental documents.

District Maintenance Stormwater Coordinator

The Maintenance Stormwater Coordinator (MSWC) is responsible for communicating with the Deputy District Director of Maintenance and Maintenance Operation Team (MOT) regarding the proper implementation of maintenance related sections of the SWMP and the DWP. The MSWC reports all stormwater related maintenance activities to the Deputy District Director of Maintenance, the Maintenance Office Chief, and the Maintenance Region Managers. The MSWC coordinates stormwater training for maintenance staff, as well as oversees the inspection of maintenance facilities and operations relative to complying with the NPDES Permit. The MSWC is chairperson of the MOT that meets routinely to discuss water quality issues, updates the Maintenance portion of the DWP, and compiles information for the Annual Reports, as well as the SWMP. The MSWC serves as the conduit for information between the Deputy District Director of Maintenance, Headquarters Maintenance Program (especially the Maintenance SWAT identified in the SWMP) and the maintenance field offices. The Maintenance Stormwater Coordinator may also be delegated the signatory authority on District stormwater documents, specifically the Stormwater Data Report.

Construction Stormwater Coordinator

The Construction Stormwater Coordinator (CSWC), under the direction of the Construction Engineer (Senior) and the Central Region Construction Division Chief, provides technical assistance to Resident Engineers relating to Caltrans Statewide MS4 NPDES Permit, Construction General NPDES Stormwater Permit and Caltrans Stormwater Guidance Handbooks. The District-CSWC is responsible for:

- Caltrans' compliance with the construction stormwater requirements of the Caltrans MS4 NPDES Permit, the Construction General Permit, and Caltrans Stormwater Manuals by coordinating with project staff during the Pre-Job meeting, reviewing stormwater data report submittals, and periodic review of construction sites as a representative of the District Construction Division Chief.
- Reviewing a project's Construction Compliance Evaluation Plan (CCEP), reviewing CCEP Action Plans (if required), and coordinating the exchange of information between Headquarters Water Quality, Headquarters Construction, District and Regional Stormwater/NPDES Units as

required.

Other specific tasks for which the CSWC coordinates with other Caltrans units include:

- Serving as the focal point of contact with the District NPDES Stormwater Coordinators for all construction stormwater issues during the construction phase.
- Identifying and coordinating stormwater training for Construction staff.
- Working with the Central Region NPDES/Stormwater Unit, District NPDES Coordinator and various Project Engineers to review Stormwater Data Reports and ensure that project plans and specifications identify and adequately fund stormwater needs for each project.
- Tracking critical compliance milestones that occur before and during the course of construction.
- Assisting with final project closeout inspections for completion of NPDES/Stormwater components.
- Assisting the Resident Engineer in the submittal of the Notice of Termination for SWPPP projects.
- As requested, reviewing SWPPP/WPCP submittals.
- Assisting with data entry in SMARTS.
- Submitting reports as requested to the District or Regional NPDES Coordinator.
- Coordinating 90% walk-through with Maintenance.
- Reviewing and providing oversight of Caltrans SWPPP projects, and coordinating with the Construction Division Chief about project compliance matters.
- Assisting Engineers with reporting Notices of Potential Incidents to the District NPDES Coordinator.
- Assisting Engineers in evaluating water pollution control measures in the field.
- Assisting Engineers with Illegal Connection/Illicit Discharge (IC/ID) Reports for Construction to the District NPDES Coordinator and other units (Hazardous Materials Management or Hazardous Waste Management), as needed.
- Representing Construction at the District SWAT meetings.
- Providing input on the Annual Report.
- Participating in the Construction SWAT defined in the SWMP.

The CSWC assists with enforcement actions or corrections requested by the Regional Boards are implemented and documented promptly. The CSWC also serves as the primary conduit for information during the construction phase for the District, Headquarters Construction, and construction field staff.

Right-of-Way (ROW) Coordinator

The Central Region Right of Way (ROW) Stormwater Coordinator serves Districts 5, 6, and 10 and is responsible for the following tasks:

- Attending all Stormwater Functional Team meetings to report on ROW activities.
- Ensuring that stormwater training is available to ROW staff with property inspection responsibilities.

- Ensuring that regular property inspections include stormwater inspections.
- Documenting the results of inspections and corrective actions.
- Preparing a summary of completed stormwater property inspections for use in Annual Reports.
- Disseminating information and answering questions regarding Caltrans stormwater policy to all ROW staff involved in stormwater inspections.
- Notifying the DSWC of discharges or situations that appear to be in violation of the NPDES Permit, SWMP or DWP.
- Reporting instances where ROW may conduct construction activities that require the development of a SWPPP and related notification.

Engineering Services (Hydraulics) Representative

The Engineering Services (Hydraulics) Representative (HR) is a member of the Functional Stormwater Committee responsible for providing information on permanent control measures, except those related to erosion control, which are being planned, designed, and implemented in projects. The HR ensures that the management and staff of the Hydraulics Branch are knowledgeable about the DWP, water pollution control efforts, and the requirements for minimizing or preventing pollutants from being present in discharges. The HR ensures that the design processes used by the Hydraulics Branch are consistent with the DWP and the SWMP, especially those processes related to the evaluation, selection, and design of permanent control and treatment control measures. The HR assists Hydraulics staff with preparation and review of the Rapid Stream Stability Assessment documentation for projects subject to that requirement under the NPDES Permit.

District Public Affairs Coordinator

The Public Information Officer (PIO) is a member of the Functional Stormwater Committee responsible for maintaining an effective public information and outreach program as specified in this DWP and any elements of the SWMP that are attributed to the District. The PIO Coordinator is directly responsible for the following:

- Distributing the District's stormwater pamphlet.
- Developing and distributing of Social Media and Public Service Announcements regarding stormwater.
- Coordinating Public Outreach via the Caltrans Protect Every Drop campaign – protecteverydrop.com
- Ensuring that stormwater information is available at public events for which Caltrans may be a participant.

District Encroachment Permits Coordinator

The Encroachment Permits Stormwater Coordinator (Permits Coordinator) is a member of the Stormwater Functional Team responsible for ensuring that the District's Office of Permits complies with the NPDES Permit, SWMP, and DWP. The Office of Permits is responsible for issuing permits to local agencies, utility companies, and others (e.g., film production companies, marathon sponsors, etc.) that desire to encroach into Caltrans' ROW for construction, maintenance or other activities consistent with their organization. The Permits Coordinator ensures that all permits issued comply with the appropriate NPDES Permit in a manner consistent with Maintenance, Construction, and Design requirements. The following are tasks performed by the Permits Coordinator:

- Reviewing Caltrans Encroachment Permit applications to determine whether Stormwater BMPs (design pollution prevention, permanent treatment, and temporary construction site BMPs), Permanent Erosion Control Plans, and Caltrans SWPPP or WPCP are required.
- Working closely with the Headquarters Encroachment Permits Office, District and Central Region NPDES, Central Region Construction, District Maintenance Stormwater Coordinators, as well as District Landscape Architect and Hydraulics Branches to discuss stormwater-related activities.
- Keeping track of issued District 6 Encroachment Permit Projects with stormwater-related activities.
- Reviewing SWPPPs and WPCPs for compliance with the current Caltrans standards and to ensure their consistency and compliance with the Construction General Permit.
- Attending and participating in stormwater meetings conducted by the Headquarters Encroachment Permits Office.
- Submitting reports to the Caltrans Stormwater Program and Headquarters Encroachment Permits Office as appropriate.
- Assisting District Encroachment Permit Inspectors in resolving stormwater issues related to active Encroachment Permit projects.
- Conducting stormwater field inspections of authorized District Encroachment Permit construction work.
- Documenting and submitting stormwater compliance inspections of authorized District Encroachment Permit projects into the statewide Encroachment Permits database.
- Contacting District Maintenance and NPDES coordinators when it appears that IC/ID activities or operations are discovered during stormwater compliance site inspections.
- Assisting the NPDES Branch during IC/ID investigations.
- Assisting the EPSWAT in updating stormwater guidance or training courses.
- Tracking and identifying stormwater training needs for District Encroachment Permits staff.

District Landscape Architecture Coordinator

The District's Landscape Architecture Office facilitates incorporating water pollution and erosion control recommendations into the planning, design, and construction of all projects in the District. In addition, the District Landscape Architect provides field support to the Construction, Maintenance, and Encroachment Permits divisions when requested.

The specific stormwater tasks for which the Landscape Architect is responsible include the following:

- Evaluating and recommending permanent control and treatment control measures to address a project's stormwater impacts.
- Identifying costs related to water pollution and erosion control in program documents.
- Determining and evaluating stormwater impacts during CEQA/NEPA screening.
- Developing new specifications, details, and guidance materials related to erosion and sediment control.
- Preparing PS&E contract language to address erosion and sediment controls for projects.

- Preparing or assisting with preparation of PS&E contract language requiring permanent control and treatment control measures to improve or minimize water quality impacts on projects.
- Preparing, as required, reports documenting the method used for the Notice of Termination for terminating coverage following construction under the Construction General Permit.
- Ensuring that the locations where soil containing lead is reused are not susceptible to erosion and are stabilized as a part of project design and meet the soil reuse agreement issued by the Department of Toxic Substances Control (DTSC).
- Conducting studies to improve water quality objectives on highway planting projects.
- Assisting in the development of training programs, especially for Landscape Architecture staff.
- Participating in the Design SWAT identified in the SWMP.

The District Landscape Architect is a liaison with the Headquarters Landscape Architecture Program to develop, submit, review, and obtain approval for all specifications and details related to erosion and sediment control. The District Landscape Architect also coordinates with Headquarters' Design Program to obtain approval or concurrence on water pollution control specifications related to erosion and sediment control. Furthermore, the District Landscape Architect must approve slope designs steeper than 4:1 in order to ensure compliance with regulations addressing stormwater pollution contained in the federal CWA. (Caltrans Highway Design Manual Chapter 300, Topic 304.1(b))

Table 2-1 lists staff members responsible for implementing the Stormwater Program.

Table 2-1: District 6 Stormwater Personnel and Responsibilities

Staff Name	Title	Phone No.	E-mail	Responsibility
James Espinosa	Central Region NPDES Stormwater Coordinator	(559) 243-8007	jim.espinosa@dot.ca.gov	Primary contact for all stormwater issues. Oversees all NPDES office employees within the Central Region Districts (Districts 5, 6, and 10).
Andrew Pochwatka	District 6 NPDES SWC	(559) 243-3417	andrew.pochwatka@dot.ca.gov	Primary contact for all District 6 stormwater issues.
Sarbjit Deol	District 6 Construction Stormwater Coordinator	(559) 367-2781	sarbjit.deol@dot.ca.gov	Primary contact for Construction-related stormwater issues in District 6.
Mikey Sanders	District 6 Maintenance Stormwater Coordinator	(559) 284-6306	mikey.sanders@dot.ca.gov	Primary contact for Maintenance-related stormwater issues.
Kathy Gill	District 6 Encroachment Permits Stormwater Coordinator	(559) 445-6502	kathy.gill@dot.ca.gov	Primary contact for Encroachment Permit-related stormwater issues.
Michelle Molina Hernandez	Central Region Airspace and Right of Way Stormwater Coordinator	(559) 445-6248	michelle.molina.hernandez@dot.ca.gov	Primary contact for stormwater-related issues as it pertains to air-space leases and right of way.
Tom Fisher	Hydraulic Representative	(559) 243-3498	tom.fisher@dot.ca.gov	Primary contact for District 6 Hydraulic related-stormwater issues.
Brad Cole	District 6 Landscape Coordinator	(559) 230-3134	brad.cole@dot.ca.gov	Primary contact for all District 6 Landscape-related stormwater issues.

Table 2-2 lists individuals authorized to sign the documents, reports, and other information submitted by the District to either the SWRCB or the RWQCB(s). These individuals/positions may delegate authorization to their staff to sign various documents and reports required for implementation of the Stormwater Program. It also includes delegation of signatory authority for key Conformed NPDES Permit and SWMP required documents.

Table 2-2: District 6 Signatory Authority for Key Documents

Position or Individual	Phone No.	E-mail	Documents Authorized for Signatures
District Director	(559) 488-4057	sharri.bender.ehlert@dot.ca.gov	All District Documents
Central Region NPDES SWC	(559) 243-8007	jim.espinosa@dot.ca.gov	All District Documents except District Work Plan
Resident Engineer	Various	Various	SWPPP, Notice of Intent (NOI), Notice of Termination (NOT), Notice and Report of Non-Compliance, Discharge or threat of Discharge Notification, Incident Report Form
Maintenance SWC	(559) 655-4571	mikey.sanders@dot.ca.gov	Notice and Report of Non-Compliance, Discharge or Threat of Discharge Notification, Report of Illegal Connection/Illicit Discharge (IC/ID), Incident Report Form, FPPPs, Notice and Report of Non-Compliance, Discharge or Threat of Discharge Notification, and Training
Encroachment Permits SWC	(559) 445-6502	kathy.gill@dot.ca.gov	SWPPPs, NOI/NOT, Notice and Report of Non-Compliance, Discharge or Threat of Discharge Notification, and Report of IC/ID, Incident Report Form
Hazardous Waste Coordinator	(559) 445-6369	juergen.vespermann@dot.ca.gov	Notice of Soil Reuse with Aerially Deposited Lead (ADL)
Maintenance Engineer	(559) 445-6514	bill.moses@dot.ca.gov	Stormwater Data Reports and Spill Prevention Control and Countermeasure Plans

Figure 2-1 shows an organizational chart describing key persons with responsibilities for stormwater operations within the District.

CENTRAL REGION - DISTRICTS 5, 6 & 10

ORGANIZATIONAL CHART

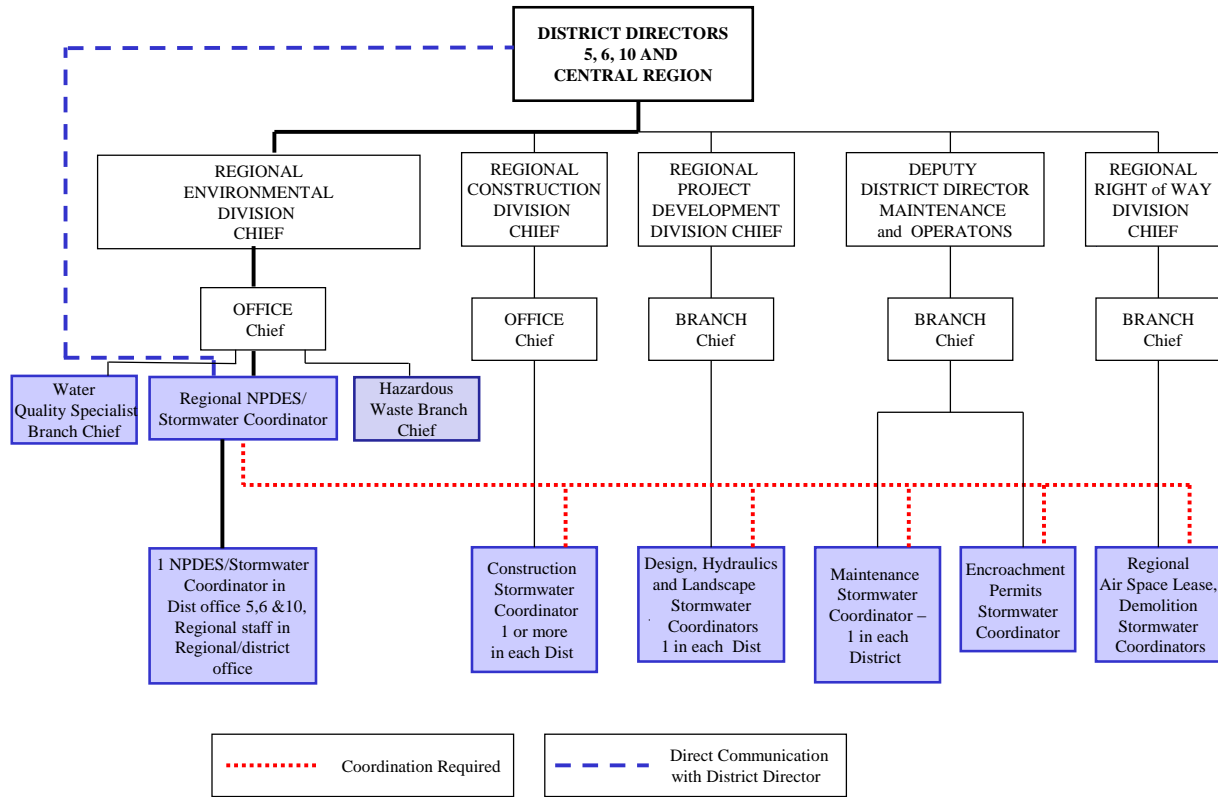


Figure 2-1: District 6 Organizational Chart

This page was intentionally left blank.

3 District Facilities and Water Bodies

Section 3 of the DWP identifies maintenance stations (including crew functions and street addresses), vista points, commercial vehicle enforcement areas, roadside rest areas, park and ride facilities, toll road and bridge plazas, equipment shops, and other Caltrans facilities. Facility Pollution Prevention Plans (FPPPs) are prepared and implemented at Maintenance facilities within the District's boundaries, such as maintenance stations, material storage facilities, and equipment shops. To comply with Department of Homeland Security policy, the table and map identifying these facilities is not available to the public. For more information, contact Caltrans' Office of Emergency Management or Division of Environmental Analysis.

This page was intentionally left blank.

4 Drinking Water Reservoirs and Recharge Facilities

Section 4 of the DWP describes and identifies the high-risk areas, which are locations where spills or other releases from District-owned rights-of-way, roadways, or facilities may discharge directly to municipal or domestic water supply reservoirs or ground water percolation facilities. Projects that potentially drain to these high-risk areas consider project features that enhance spill response.

Drinking water reservoirs and recharge facilities are areas such as locations where spills from District-owned ROWs or facilities can discharge directly to municipal or domestic water supply reservoirs or ground water percolation facilities. To generate the list of municipal, domestic water supply reservoirs, and ground water percolation facilities, the District first contacted known public and private water supply providers. From the information received, the District determined which facilities were susceptible to a direct spill from a District activity or facility. This determination was based on proximity between the water body and the District's facility, use characteristics of the facility, and the probable spill response time.

When planning projects within these defined areas, District 6 considers project design features for aiding in the prevention of accidental spills that could impact the area; these features are typically commensurate with safety improvements for reducing vehicle accidents. Examples of these features may include, but are not limited to, median barrier, guardrail, signalization, and vehicle restrictions. Features considered for improving spill response time typically include elongated drainage paths, call boxes, signage, or video surveillance.

A list of drinking water reservoirs and recharge facilities within District 6 is presented in Table 4-1.

Table 4-1: District 6 Drinking Water Reservoirs and Recharge Facilities

Road Segment/ Facility	County	Regional Board	Drinking Water Reservoir or Recharge Facility Area	Description	Comments
Ker-155 PM 67.7- 69.6	Kern	5	Lake Isabella	This reservoir is a municipal water supply source for approximately 200,000 residents in the city of Bakersfield. The road segments are mountain tourist routes, heavily used in the summer, with minimal truck traffic. Accidental spills are likely to be minor. Alternate municipal water supply sources are available.	No projects are planned for the upcoming year. The Isabella Lake Dam Safety Modification Project (sponsored by the U. S. Army Corps of Engineers (ACOE) is planned for Lake Isabella Dam and will require minor improvements to Route 155. District 6 will provide oversight of any work proposed to Route 155.

This page was intentionally left blank.

5 Slopes Prone to Erosion

Section 5 of the DWP identifies the road segments within District 6 that have slopes which are prone to erosion and sediment discharge. The road segments that are located in sensitive watersheds, or where there is an existing or potential threat to water quality, will be prioritized for implementing appropriate controls to the maximum extent practicable. In each Annual Report, the status of stabilization activities where applicable will be reported. Table 5-1 is District 6's inventory of vulnerable road segments where erosion occurs and stabilization may be required, or where rock cut slopes are located and rock falls have occurred.

Table 5-1: District 6 Inventory of Road Segments Prone to Erosion

Road Segment	County	Regional Board	Watershed	Scheduled Stabilization Date
Route 168 Post Mile 28.7, 63.45	Fresno	Central Valley Region 5	Auberry	TBD
Route 180 Post Mile 117 – 137.855	Fresno	Central Valley Region 5	Mill Flat Creek Kings River, Lower South Fork Kings River,	TBD
Route 198 Post Mile 0 – 21.204	Fresno	Central Valley Region 5	Warthan Creek	TBD
Route 99 Post Mile 22.6	Kern	Central Valley Region 5	Pleitito Creek – Kern Lake Bed	TBD
Route 41 Post Mile 2.1	Mariposa	Central Valley Region 5	Upper Fresno River	TBD
Route 41 PM 43.9 – 44.1	Kings	Central Valley Region 5	Empire Weir Number One-Kings River, Town of Huron-Kings River	TBD
Route 190 Post Mile 34 – 55.082	Tulare	Central Valley Region 5	Middle Fork Tule River	TBD
Route 245 Post Mile 29.5	Tulare	Central Valley Region 5	Dry Creek	TBD

Figure 5-1 is a map showing California State Highway System areas that required maintenance within District 6 in 2018, including rock cut slopes, landslides, and moderate soil erosion.

This page was intentionally left blank.

District 6

California State Highway System 2018 Areas Prone to Erosion

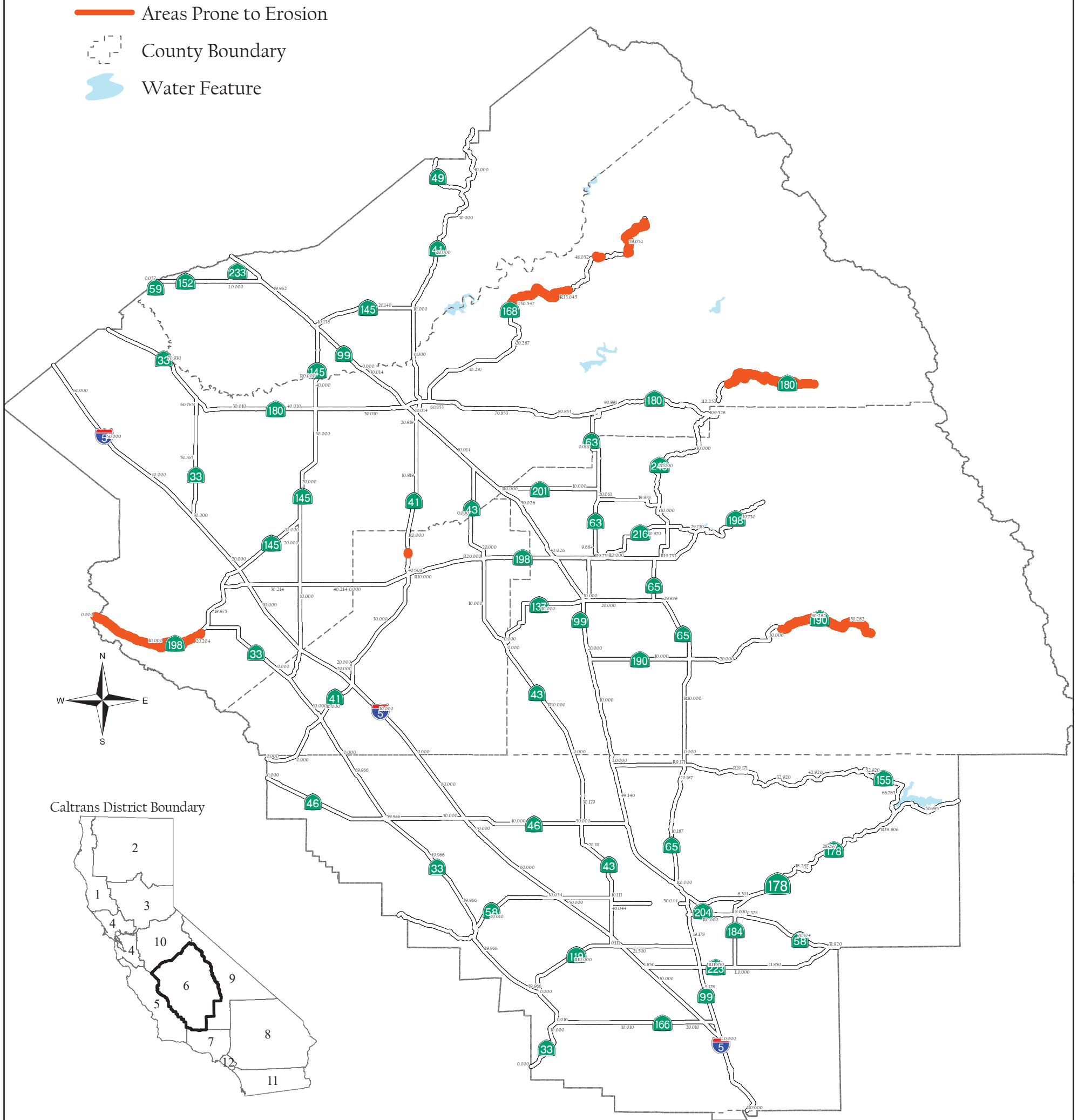


Figure 5-1

Areas Prone to Erosion

County	Route	PM1	PM2
FRE	168	28.7	63.45
FRE	180	117	137.855
FRE	198	0	21.204
KER	99	22.6	22.6
KIN	41	43.9	44.1
MPA	41	2.1	2.1
TUL	190	34	55.082
TUL	245	29.5	29.5

NOTE:

Map indicates locations of areas of prone to erosion across 3 consecutive fiscal years. The data presented comes from the IMMS database.

This map was developed for informational purposes only. While the data has been examined for general accuracy, Caltrans disclaims any responsibility for the accuracy or correctness of the data. In no event shall Caltrans become liable to users of this map, or to any other party, for any loss or damages consequential or otherwise arising from the use of this map product.



State of California
Department of Transportation
Division of Maintenance GIS
July 19, 2018

A scale bar with markings at 0, 5, 10, 20, 30, and 40 miles. The bar is black with white markings and the word "Miles" at the end.

This page was intentionally left blank.

6 Implementation

Section 6 of the DWP identifies the specific projects in which work is planned during the fiscal year within the Project Approval/Environmental Document (PA/ED), Plans, Specifications, and Estimates (PS&E), and Construction development phases. The anticipated schedule of construction and maintenance projects is subject to change. These projects are limited to those meeting any of the following criteria:

1. All projects that require soil disturbing activities
2. Adjacent to a Drinking Water or Ground Water Recharge Facility, as described in Section 4 of the DWP
3. A supplemental environmental project
4. Additional projects per agreement between the District and local RWQCB

Projects listed in Table 6-1 include (where applicable):

1. Location (county, route and post mile limits)
2. Project number (expense authorization)
3. Basic Project Description
4. Disturbed soil area
5. Presence of receiving waters within or adjacent to project limits, with special designation for 303(d) listed water bodies (adopted)
6. Drinking Water Reservoir or Ground Water Recharge Facility within or adjacent to project (as identified in Section 4 of the DWP)
7. Projected milestone dates of PA/ED, PS&E, begin Construction, and end Construction
8. Description of Construction Controls
9. Post-Construction Treatment Controls (types and quantities)
10. Dredge and fill (CWA-401) activities within the project
11. Other Regional Water Control Board Permits Required
12. Potential and Actual Impacts of Project's Discharge
13. Area of New Impervious Surface
14. Percentage of New Impervious Surface to Existing Impervious Surface

The updated lists of projects meeting these criteria will also be provided to the RWQCB annually on October 1st. Furthermore, this section identifies planned maintenance projects with soil disturbance. Information associated with the project includes location, affected water body, and area of disturbance. In addition, this section also describes the planned stormwater monitoring activities within the District; however, these activities may be conducted jointly with other Districts and HQ. Consequently, the information contained in a DWP may be repeated in another DWP.

This page was intentionally left blank.

Table 6-1: District 6 Anticipated Project Development and Construction Schedule

No.	EA	Project Location					Project Description ^{1,2}	Water Bodies Within or Adjacent to Project Limits ³	Dredge and Fill Activities (Y/N/NA) ⁴	Other Regional Water Board Permits Required ⁵	Potential and Actual Impacts of Project's Discharge ⁶	Disturbed Soil Area (acres)	Area of New Impervious Surface (acres)	Percentage of New Impervious Surface to Existing Impervious Surface	Description of Construction Controls (SWPPP/WPCP/TBD) ⁷	Post-Construction Treatment Control Type, Quantity ⁸	Anticipated Project Delivery Schedule		Construction Period	
		Co.	Route	Begin	End	PA&ED											PS&E	Start	End	
				Begin PM	End PM															
1	06-0C940	KER	178	R7.0	T9.1	5	SR 178 MORNING DRIVE I/C - CONSTRUCT NEW INTERCHANGE - ON SR 178 BET FAIRFAX RD & CANTERIA RD & ON MORNING DR BET 0.45MI N TO 0.30MI S OF SR 178 IN THE CITY OF BAKERSFIELD WITHIN KERN COUNTY	-	N	N/A	No long term impacts anticipated	94.2	25.3	139	SWPPP	C	9/9/2011	8/2/2012	7/17/2013	9/2/2020
2	06-0E320	KER	178	1.7	6.9	5	KERN 178 MAINTENANCE ACCESS - ROADSIDE SAFETY IMPROVEMENTS - IN KERN COUNTY IN BAKERSFIELD AT VARIOUS LOCATIONS FROM "M" STREET TO 0.1 MI EAST OF FAIRFAX ROAD	-	N	N/A	No long term impacts anticipated	3.78	3.71	TBD	WPCP	E	2/7/2017	5/1/2018	2/4/2019	12/16/2019
3	06-0E350	FRE	168	0	11.7	5	168 GORE PAVING - FREEWAY MAINTENANCE ACCESS - IN FRESNO AND CLOVIS FROM THE 180/168 SEPARATION TO SHEPHERD AVE	-	N	N/A	No long term impacts anticipated	3.71	2.32	TBD	WPCP	E	7/22/2015	9/6/2016	6/20/2017	7/31/2018
4	06-0F350	KER	178	R8.4	T9.8	5	SR 178 WIDENING - HIGHWAY WIDENING - ON STATE ROUTE 178 BETWEEN 0.68 MILE EAST OF MORNING DRIVE & 0.20 MILE EAST OF MIRAMONTE DRIVE IN THE CITY OF BAKERSFIELD WITHIN KERN COUNTY	-	N	N/A	No long term impacts anticipated	56.5	15.4	139	SWPPP	C	8/20/2012	2/3/2014	5/18/2015	12/1/2020
5	06-0G851	KER	58	R52.7	R55.5	5	GAP CLOSURE REHAB - ROADWAY REHABILITATION (3R) - IN BAKERSFIELD FROM ROUTE 58/99 SEPARATION TO COTTONWOOD ROAD	-	N	N/A	No long term impacts anticipated	25.57	3.37	6.75	SWPPP	E	9/30/2013	6/1/2017	7/16/2018	3/1/2021

¹ Supplemental Environmental Projects designated as "SEP."

² Projects adjacent to Drinking Water Reservoirs or Ground Water Recharge Facilities are noted (DW) and (GW), respectively.

³ Water bodies with designation for 303(d) designation are noted in parentheses.

⁴ If yes, a 401 permit will be required for this project. NA = Not Available at this time.

⁵ Regional Water Board Permits required other than Construction General Permit and Clean Water Act Section 401 water quality certification, such as Waiver of Discharge Requirements, Dewatering Permits, Bridge Painting WDRs, etc.

⁶ This information may come from the Water Quality Assessment Report prepared for each project, a Water Quality Technical Memorandum, or other document that evaluates the water quality impacts of a project.

⁷ A description of the Construction Controls is available in the project's Storm Water Pollution Prevention Plan (SWPPP), Water Pollution Control Plan (WPCP), or is To Be Determined (TBD) if the Disturbed Soil Area is unavailable.

⁸ Treatment Control Status identified by: device type/number of devices, exempt ("E"), or under consideration ("C"). See Treatment Control Status Legend below for device type abbreviations.

⁹ Regional Board

Table 6-1: District 6 Anticipated Project Development and Construction Schedule

No.	EA	Project Location					Project Description ^{1,2}	Water Bodies Within or Adjacent to Project Limits ³	Dredge and Fill Activities (Y/N/NA) ⁴	Other Regional Water Board Permits Required ⁵	Potential and Actual Impacts of Project's Discharge ⁶	Disturbed Soil Area (acres)	Area of New Impervious Surface (acres)	Percentage of New Impervious Surface to Existing Impervious Surface	Description of Construction Controls (SWPPP/WPCP/TBD) ⁷	Post-Construction Treatment Control Type, Quantity ⁸	Anticipated Project Delivery Schedule		Construction Period		
		Co.	Route	Begin	End	PA&ED											PS&E	Start	End		
				Begin PM	End PM																
RB ⁹																		Date	Date	Date	Date
6	06-0G980	TUL	65	31.6	39.6	5	EXTER CAPM OVERLAY - AC OVERLAY - IN TULARE COUNTY IN AND NEAR EXETER FROM SR 137 (AVE 232) TO SR 198	-	N	N/A	No long term impacts anticipated	0.38	0.03	0.09	WPCP	E		10/1/2007	3/30/2017	11/16/2017	2/15/2019
7	06-0H110_	FRE	168	57.8	65.4	5	TAMARAC RIDGE CULVERT - REPLACE, REPAIR AND RELINE CULVERTS - ON RTE 168 IN FRE CO NEAR HUNTNGTN LAKE BET 0.43M W OF S FORK TAMARACK CREEK BR#42-57 & 0.34M W OF RANCHERIA CREEK BR#42-122 (KP 93.02/105.33)	-	N	N/A	No long term impacts anticipated	0.16	0	0	WPCP	E		2/1/2017	12/1/2017	8/15/2018	8/15/2019
8	06-0H11U	FRE	168	R36	65.9	5	ROUTE 168 CULVERT REPAIR - REPLACE, REPAIR, AND/OR RELINE CULVERTS - NEAR SHAVER LK. AND HUNTINGTON LK. FROM 0.2 MI. WEST OF EAST JCT. AUBERRY/TOLLHOUSE RD. TO 0.3 MI WEST OF RANCHERIA CREEK	This project is combined with 06-0H110 & 06-0U090 into 06-0U09U	N	N/A	No long term impacts anticipated	31.2	0	0	SWPPP	E		6/2/2017	8/4/2017	7/2/2018	2/11/2019
9	06-0H140	TUL	190	34.7	39.4	5	TULARE CULVERT REPLACEMENT - REPLACE, REPAIR, AND/OR RELINE CULVERTS. - IN TULARE COUNTY NEAR SPRINGVILLE FROM 0.4 MI EAST OF RIO VISTA RD TO 0.1 MI EAST OF FLUME OVERCROSSING AT VARIOUS LOCATIONS	Middle Fork Tule River	N	401	No long term impacts anticipated	0.19	0	0	SWPPP	E		11/17/2018	2/15/2020	3/15/2021	5/1/2021
10	06-0H200	TUL	201	12.4	21.2	5	Bridge Widening - BRIDGE RAIL REPLACEMENT - IN TULARE COUNTY ON ROUTE 201 NEAR CUTLER AND AT FRIANT-KERN CANAL AND ON ROUTE 216 NEAR WOODLAKE AND AT KAWEAH RIVER	-	N	N/A	No long term impacts anticipated	3.9	2.31	28.2	SWPPP	E		4/20/2015	2/22/2017	1/21/2019	7/19/2021

Table 6-1: District 6 Anticipated Project Development and Construction Schedule

No.	EA	Project Location					Project Description ^{1,2}	Water Bodies Within or Adjacent to Project Limits ³	Dredge and Fill Activities (Y/N/NA) ⁴	Other Regional Water Board Permits Required ⁵	Potential and Actual Impacts of Project's Discharge ⁶	Disturbed Soil Area (acres)	Area of New Impervious Surface (acres)	Percentage of New Impervious Surface to Existing Impervious Surface	Description of Construction Controls (SWPPP/WPCP/TBD) ⁷	Post-Construction Treatment Control Type, Quantity ⁸	Anticipated Project Delivery Schedule		Construction Period	
		Co.	Route	Begin	End	PA&ED											PS&E	Start	End	
				Begin PM	End PM															
RB ⁹																	Date	Date	Date	Date
11	06-0H240	FRE	99	14.1	17.6	5	SOUTH FRESNO INTERCHANGE PROJECT - MODIFY INTERCHANGES - IN AND NEAR FRESNO FROM 0.4 MI SOUTH OF AMERICAN AVENUE OVERCROSSING TO 0.4 MI NORTH OF NORTH AVENUE OVERCROSSING	-	N	N/A	No long term impacts anticipated	50.54	15.38	TBD	SWPPP	E	10/1/2021	TBD	12/1/2025	10/18/2027
12	06-0H320	KIN/KER	5	0/85.5	6.1/87.0	5	QUAY VALLEY DEVELOPMENT - CONSTRUCT NEW INTERCHANGES - IN KERN COUNTY FROM 1.5 MILES SOUTH OF COUNTY LINE OVERCROSSING TO 1.6 MILES NORTH OF XENIA AVENUE OVERCROSSING IN KINGS COUNTY	-	N	N/A	No long term impacts anticipated	120	45	TBD	SWPPP	E	7/1/2018	TBD	TBD	TBD
13	06-0H360	FRE	99	28.1	30.9	5	VETERANS BL INTERCHANGE - NEW INTERCHANGE - ON SR 99 BETWEEN HERNDON AVENUE AND SHAW AVENUE & ON VETERANS BOULEVARD BETWEEN SHAW AVENUE AND POLK AVENUE IN THE CITY OF FRESNO WITHIN FRESNO COUNTY	-	N	N/A	No long term impacts anticipated	87.4	32.6	TBD	WPCP	E	7/31/2013	11/1/2018	8/17/2020	8/1/2022
14	06-0J530	TUL	190	20.9	21.3	5	RESERVATION ROAD ROUNDABOUT - INTERSECTION IMPROVEMENT - ON ROUTE 190, IN TULARE COUNTY, NEAR PORTERVILLE BETWEEN 0.2 MILE WEST OF ROAD 284 AND 0.1 MILE EAST OF ROAD 284	Tule River	N	N/A	No long term impacts anticipated	4.15	0.78	46	SWPPP	E	10/3/2012	10/1/2014	10/7/2015	5/1/2018
15	06-0K290	FRE	99	22.7	23.3	5	SOUTHBOUND 99 RAMP METERING - INSTALL RAMP METERING AT VARIOUS LOCATIONS - ON ROUTE 99 IN FRESNO COUNTY BETWEEN BELMONT AVENUE OC AND SHAW AVENUE OC	-	N	N/A	No long term impacts anticipated	1.97	0.68	9.5	WPCP	E	4/11/2016	3/1/2017	9/15/2017	2/1/2020
16	06-0K460	KER	46 / 99	57.3 / 43.9	57.8 / 44.6	5	FAMOSO SR 46/99 BRIDGE - BRIDGE REPLACEMENT - ON ROUTE 46 AT SR 46/99 SEPARATION	Poso Creek	N	N/A	No long term impacts anticipated	30.2	2.6	54.6	SWPPP	E	7/16/2014	11/30/2015	5/30/2017	7/1/2020

Table 6-1: District 6 Anticipated Project Development and Construction Schedule

No.	EA	Project Location					Project Description ^{1,2}	Water Bodies Within or Adjacent to Project Limits ³	Dredge and Fill Activities (Y/N/NA) ⁴	Other Regional Water Board Permits Required ⁵	Potential and Actual Impacts of Project's Discharge ⁶	Disturbed Soil Area (acres)	Area of New Impervious Surface (acres)	Percentage of New Impervious Surface to Existing Impervious Surface	Description of Construction Controls (SWPPP/WPCP/TBD) ⁷	Post-Construction Treatment Control Type, Quantity ⁸	Anticipated Project Delivery Schedule		Construction Period	
		Co.	Route	Begin	End	PA&ED											PS&E	Start	End	
				Begin PM	End PM															
						RB ⁹											Date	Date	Date	Date
17	06-0K800	FRE / KIN	33, 41, 43	Var	Var	5	SEISMIC RESTORATION-VAR - SEISMIC RESTORATION - ON ROUTES 33, 41, 43, AND 233/152 IN FRESNO, KINGS, AND MADERA COUNTIES AT VARIOUS LOCATIONS	Kings River	N	401	No long term impacts anticipated	1.55	0	0	WPCP	E	2/11/2015	11/16/2015	11/28/2016	6/30/2018
18	06-0K810	KER	99/178	Var	Var	5	KERN COUNTY SEISMIC RESTORATION - SEISMIC RESTORATION - IN KERN COUNTY IN BAKERSFIELD AT AIRPORT DRIVE OVERCROSSING AND AT GOLDEN STATE AVENUE SEPARATION	Calloway Canal	N	401	No long term impacts anticipated	0.93	0	0	WPCP	E	3/13/2014	12/11/2015	11/3/2016	3/1/2019
19	06-0N130	TUL	190	9.1	9.6	5	POPLAR DRAINAGE REPAIR - CORRECT DRAINAGE - NEAR POPLAR FROM 0.2 MI WEST OF ROAD 191 TO 0.1 MI EAST OF ROAD 192	-	N	N/A	No long term impacts anticipated	0.2	0	0	WPCP	E	12/15/2017	10/30/2018	7/17/2019	11/15/2019
20	06-0N580	TUL	245	6.2	7.2	5	SOUTH VALENCIA BLVD ADA - IMPROVE PEDESTRIAN ACCESS AND ADA CURB RAMPS - ON SR 245 NEAR WOODLAKE FROM DELTHA AVE TO BRAVO AVE	Lake Bravo, St Johns River	N	N/A	No long term impacts anticipated	2.3	0.6	20	SWPPP	E	12/30/2014		7/13/2018	11/13/2019
21	06-0N960	KER	204	5.4	6.7	5	-BAKERSFIELD BRIDGE PREVENTATIVE MAINTENANCE - PLACE DECK OVERLAY, REPLACE JOINT SEALS & PAINT - ON ROUTE 204 GOLDEN STATE AVENUE BETWEEN SR-99 AND SR-178 IN KERN COUNTY AT VARIOUS LOCATIONS	-	N	N/A	No long term impacts anticipated	0	0	0	WPCP	E	1/10/2014	10/13/2014	10/6/2015	4/27/2017
22	06-0N990	FRE / MAD	41	33.1 / 0.0	33.4 / 0.3	5	41 SEISMIC RETROFIT - BRIDGE SEISMIC RETROFIT - ON ROUTE OLD ROUTE 41 BETWEEN PM 33.3/33.4 (FRESNO COUNTY) AND PM 0.0/0.2 (MADERA COUNTY)	San Juaquin River	N	401	No long term impacts anticipated	2.94	0	0	SWPPP	E	10/15/2014	11/3/2015	11/3/2016	11/9/2019

Table 6-1: District 6 Anticipated Project Development and Construction Schedule

No.	EA	Project Location					Project Description ^{1,2}	Water Bodies Within or Adjacent to Project Limits ³	Dredge and Fill Activities (Y/N/NA) ⁴	Other Regional Water Board Permits Required ⁵	Potential and Actual Impacts of Project's Discharge ⁶	Disturbed Soil Area (acres)	Area of New Impervious Surface (acres)	Percentage of New Impervious Surface to Existing Impervious Surface	Description of Construction Controls (SWPPP/WPCP/TBD) ⁷	Post-Construction Treatment Control Type, Quantity ⁸	Anticipated Project Delivery Schedule		Construction Period		
		Co.	Route	Begin	End	PA&ED											PS&E	Start	End		
				Begin PM	End PM																
																		Date	Date	Date	Date
23	06-0P140	KER	5	62.5	73.1	5	LOST HILLS LANE REPLACEMENT - REPLACE PCC PANELS, GRIND CONCRETE PAVEMENT & CRACK SEAL AC SHOULDERS - ON ROUTE 5 BETWEEN LERDO OVERCROSSING AND ROUTE 5/46 SEPARATION	-	N	N/A	No long term impacts anticipated	107.6	17.3	16.5	SWPPP	E		10/25/2011	3/26/2014	12/19/2014	4/3/2017
24	06-0P290	KER	155	1.5	1.5	5	DELANO ROUNDABOUT - INTERESECTION IMPROVEMENTS - NEAR DELANO AT BROWNING ROAD	-	N	N/A	No long term impacts anticipated	5.8	1.6	114	SWPPP	E		9/2/2014	7/1/2016	4/6/2017	12/1/2018
25	06-0P320	TUL	198	6.5	7.1	5	AKERS OPERATIONAL IMPROVEMENT - MINOR WIDENING AND SAFETY IMPROVEMENTS - IN VISALIA ON ROUTE 198 AT AKERS STREET UNDERCROSSING	-	N	N/A	No long term impacts anticipated	0.72	0.4	TBD	WPCP	E		8/26/2017	7/30/2018	7/23/2019	8/1/2020
26	06-0P900	KER	43/119	Var	Var	5	119/43 ROUNDABOUT - INTERSECTION IMPROVEMENTS - IN KERN COUNTY NEAR TAFT FROM SR 119 TO 0.3 MI NORTH OF SR 119.	-	N	N/A	No long term impacts anticipated	8.8	1.51	43.4	SWPPP	E		10/28/2015	12/15/2017	9/17/2018	12/31/2019
27	06-0P910	MAD	99	26.3	26.8	5	MAD 99/233 CHOWCHILLA INTERCHANGE IMPROVEMENT - INTERCHANGE IMPROVEMENT - AT ROUTE 99/233 SEPARATION IN MADERA COUNTY FROM 2.6 MILES NORTH OF AVENUE 24 OC TO 1.3 MILES SOUTH OF LE GRANDE AVENUE OC	Ash Slough	N	N/A	No long term impacts anticipated	5.54	3.58	180	SWPPP	E		8/16/2019	8/16/2019	6/15/2022	4/15/2024
28	06-0Q180	KER	58	94.16	94.16	5	SUMMIT OH BRIDGE RAILS - REPLACE BRIDGE RAILS - NEAR TEHACHAPI AT SUMMIT OVERHEAD	-	N	N/A	No long term impacts anticipated	0.1	0	0	WPCP	E		6/27/2013	10/1/2017	10/1/2018	8/1/2019
29	06-0Q190	KER	58	R99.3	R100.3	5	CACHE CREEK BRIDGE REPLACEMENT - REPLACE BRIDGES - ABOUT 8 MILES EAST OF TEHACHAPI FROM SAND CANYON OH TO 0.5 MI EAST OF CACHE CREEK (BR# 50-346 L/R)	-	N	N/A	No long term impacts anticipated	8.56	0	0	SWPPP	E		7/28/2015	10/2/2017	10/15/2018	11/1/2020

Table 6-1: District 6 Anticipated Project Development and Construction Schedule

No.	EA	Project Location					Project Description ^{1,2}	Water Bodies Within or Adjacent to Project Limits ³	Dredge and Fill Activities (Y/N/NA) ⁴	Other Regional Water Board Permits Required ⁵	Potential and Actual Impacts of Project's Discharge ⁶	Disturbed Soil Area (acres)	Area of New Impervious Surface (acres)	Percentage of New Impervious Surface to Existing Impervious Surface	Description of Construction Controls (SWPPP/WPCP/TBD) ⁷	Post-Construction Treatment Control Type, Quantity ⁸	Anticipated Project Delivery Schedule		Construction Period	
		Co.	Route	Begin	End	PA&ED											PS&E	Start	End	
				Begin PM	End PM															Date
30	06-0Q210	FRE	180	57.9	62.4	5	180 BRAIDED RAMPS LANDSCAPE - FREEWAY LANDSCAPING - IN FRESNO FROM 0.7 MI WEST OF ROUTE 180S/41 SEPARATION TO 0.1 MI EAST OF PEACH AVE OC	-	N	N/A	No long term impacts anticipated	3.5	3.5	0	SWPPP	C	5/9/2013	6/3/2014	6/22/2015	2/3/2020
31	06-0Q260	TUL	65	20.1	31.5	5	PORTERVILLE TO CAIRNS CORNER CAPM - PAVEMENT PRESERVATION - IN TULARE COUNTY IN AND NEAR PORTERVILLE FROM 0.3 MI. SOUTH OF OLIVE AVE UC TO SR 137 (RD 196)	-	N	N/A	No long term impacts anticipated	0.65	0.2	TBD	WPCP	E	6/27/2013	1/26/2016	5/10/2017	10/1/2018
32	06-0Q280	KER	99	23.6	28.4	5	BAKERSFIELD 99 REHAB - ROADWAY REHABILITATION - IN KERN COUNTY IN AND NEAR BAKERSFIELD FROM BRUNDAGE LN OC TO BEARDSLEY CANAL	Kern River, Calloway Canal, Beardsley Canal, Carrier Canal	N	N/A	No long term impacts anticipated	18.55	2.75	3.1	SWPPP	E	8/22/2016	11/1/2017	2/1/2019	10/1/2020
33	06-0Q300	FRE	Var	Var	Var	5	FRESNO ITS FREEWAY CROSSINGS - - CALTRANS & CITY OF FRE WILL DESIGN & CONSTRUCT AN INTELLIGENT TRANSP SYSTEM (ITS) PROJ ON CITY ARTERIAL CROSSINGS OF CALTRANS FREEWAYS & SYNCHRONIZATION OF TRAFFIC SIGNALS	-	TBD	TBD	TBD	TBD	TBD	TBD	TBD	TBD	-	-	-	-
34	06-0Q320	KIN	198	15.5	15.5	5	HANFORD ARMONA ROUNDABOUT - INTERSECTION IMPROVEMENTS - NEAR HANFORD AT HANFORD-ARMONA ROAD UNDERCROSSING	-	N	N/A	No long term impacts anticipated	6.4	1.8	90	SWPPP	E	2/1/2016	9/1/2017	7/18/2018	7/15/2020

Table 6-1: District 6 Anticipated Project Development and Construction Schedule

No.	EA	Project Location					Project Description ^{1,2}	Water Bodies Within or Adjacent to Project Limits ³	Dredge and Fill Activities (Y/N/NA) ⁴	Other Regional Water Board Permits Required ⁵	Potential and Actual Impacts of Project's Discharge ⁶	Disturbed Soil Area (acres)	Area of New Impervious Surface (acres)	Percentage of New Impervious Surface to Existing Impervious Surface	Description of Construction Controls (SWPPP/WPCP/TBD) ⁷	Post-Construction Treatment Control Type, Quantity ⁸	Anticipated Project Delivery Schedule		Construction Period	
		Co.	Route	Begin	End	PA&ED											PS&E	Start	End	
				Begin PM	End PM															
35	06-0Q431	TUL	190	13.1	17.3	5	PORTERVILLE INTERSECTION IMPROVEMENT - OPERATIONAL IMPROVEMENTS AT VARIOUS LOCATIONS - IN PORTERVILLE FROM 0.3 MILES WEST OF WESTWOOD ROAD TO 0.3 MILES EAST OF PLANO STREET	Poplar Ditch	N	N/A	No long term impacts anticipated	15.19	3.56	53	SWPPP	E	6/26/2017	2/1/2019	3/1/2021	11/1/2022
36	06-0Q610	MAD	99	10	26.8	5	MAD 99 ROADSIDE SAFETY - ROADSIDE SAFETY IMPROVEMENTS - IN MADERA COUNTY IN AND NEAR MADERA FROM 0.3 MI SOUTH OF ROUTE 145/99 SEPARATION TO ASH SLOUGH	Berenda Slough, Ash Slough	N	N/A	No long term impacts anticipated	1.7	1.7	0	WPCP	E	3/17/2015	8/1/2016	4/21/2017	9/28/2018
37	06-0Q620	KER	5	54.1		5	BUTTONWILLOW SRRA SEWER UPGRADE - UPGRADE WATER AND WASTE WATER SYSTEMS. - IN KERN COUNTY AT THE BUTTONWILLOW SAFETY ROADSIDE REST AREA	-	N	N/A	No long term impacts anticipated	0.9	0.03	11.5	WPCP	E	4/28/2016	12/20/2016	7/15/2018	10/1/2019
38	06-0Q630	Var	41	Var	Var	5	FRE/MAD ROADSIDE SAFETY - - IN FRESNO AND MADERA COUNTIES FROM 0.2 MI SOUTH OF BULLARD AVE OC TO 0.5 MI NORTH OF CHILDRENS BLVD OC	-	N	N/A	No long term impacts anticipated	3.96	3.96	TBD	WPCP	E	11/19/2014	12/2/2016	5/30/2017	4/30/2018
39	06-0Q670	TUL	198	14.65	14.65	5	FARMERSVILLE ROUNDABOUT 2 - INTERSECTION IMPROVEMENT - STATE ROUTE 198 AT FARMERSVILLE BOULEVARD	-	N	N/A	No long term impacts anticipated	8	0.7	25.75	SWPPP	E	11/28/2013	4/14/2015	7/20/2015	4/20/2018
40	06-0Q680	TUL	198	11.6	11.6	5	FARMERSVILLE ROUNDABOUT 1 - INTERSECTION IMPROVEMENT - STATE ROUTE 198 AT FARMERSVILLE BOULEVARD	Cameron Creek	N	N/A	No long term impacts anticipated	3	0.7	47	SWPPP	E	12/10/2013		7/20/2015	4/20/2018

Table 6-1: District 6 Anticipated Project Development and Construction Schedule

No.	EA	Project Location					Project Description ^{1,2}	Water Bodies Within or Adjacent to Project Limits ³	Dredge and Fill Activities (Y/N/NA) ⁴	Other Regional Water Board Permits Required ⁵	Potential and Actual Impacts of Project's Discharge ⁶	Disturbed Soil Area (acres)	Area of New Impervious Surface (acres)	Percentage of New Impervious Surface to Existing Impervious Surface	Description of Construction Controls (SWPPP/WPCP/TBD) ⁷	Post-Construction Treatment Control Type, Quantity ⁸	Anticipated Project Delivery Schedule		Construction Period	
		Co.	Route	Begin	End	PA&ED											PS&E	Start	End	
				Begin PM	End PM															
						RB ⁹											Date	Date	Date	Date
41	06-0Q820	KER	5	5.8	8.8	5	GRAPEVINE CHANNEL REPAIR - REPAIR CONCRETE CHANNEL - IN KERN COUNTY NEAR LEBEC ON ROUTE 5 FROM 0.6 MILE NORTH OF FORT TEJON OVERCROSSING TO 1.3 MILE SOUTH OF GRAPEVINE UNDERCROSSING	Grapevine Creek	N	401	No long term impacts anticipated	1.98	0.55	TBD	WPCP	E	4/1/2018	12/1/2018	11/1/2019	7/1/2020
42	06-0Q900	FRE	180	92.2	130.13	5	KINGS CANYON BRIDGE RAIL - UPGRADE BRIDGE RAILS - IN FRESNO COUNTY NEAR SQUAW VALLEY AT MILL CREEK & NEAR BOYDEN CAVE AT SOUTH FORK KINGS RIVER	Mill Creek, South Fork Kings River	N	N/A	No long term impacts anticipated	0.1	0	0	WPCP	E	1/15/2018	11/19/2018	9/2/2019	9/1/2020
43	06-0Q910	TUL	99	19.4	19.4	5	TIPTON BRIDGE DECK REHAB - BRIDGE DECK AND OUTSIDE GIRDER REPLACEMENT - IN TULARE COUNTY NEAR TIPTON AT AVENUE 152 OVERCROSSING	-	N	N/A	No long term impacts anticipated	2.27	0.06	15.6	SWPPP	E	2/1/2018	6/3/2019	8/3/2020	10/1/2021
44	06-0Q920	KER	99	10.4	21.2	5	PANAMA AND WHITE LANE VERTICAL CLEARANCE IMPROVEMENTS - RAISE BRIDGES - IN KERN COUNTY IN BAKERSFIELD ON ROUTE 99, AT PANAMA LN BR 50-0247 AND WHITE LN BR 50-0248	West Branch Canal	N	N/A	No long term impacts anticipated	69	1	1.3	SWPPP	E	3/1/2018	10/28/2019	8/1/2020	1/1/2022
45	06-0R020	KER	58	T52.1	R52.3	5	SR 58 RUBBERIZED BWC - INSTALL TEMPORARY K-RAIL AND FRICTION TREATMENT - IN BAKERSFIELD FROM REAL ROAD TO THE ROUTE 58/99 SEPARATION	-	N	N/A	No long term impacts anticipated	0.11	0.08	TBD	WPCP	E	8/12/2014	10/9/2015	7/18/2016	12/19/2016
46	06-0R040	MAD	41	R1.5	12	5	MADERA 41 SOUTH EXPRESSWAY - FOUR LANE EXPRESSWAY ON NEW ALIGNMENT - IN MADERA COUNTY NEAR FRESNO FROM 0.3 MI NORTH OF VALLEY CHILDRENS PLACE OC TO 0.6 MI NORTH OF ROAD 208	Little Dry Creek, Madera Canal	N	N/A	No long term impacts anticipated	550	220	271.6	SWPPP	C	7/15/2018	10/15/2019	2/1/2021	12/1/2022

Table 6-1: District 6 Anticipated Project Development and Construction Schedule

No.	EA	Project Location					Project Description ^{1,2}	Water Bodies Within or Adjacent to Project Limits ³	Dredge and Fill Activities (Y/N/NA) ⁴	Other Regional Water Board Permits Required ⁵	Potential and Actual Impacts of Project's Discharge ⁶	Disturbed Soil Area (acres)	Area of New Impervious Surface (acres)	Percentage of New Impervious Surface to Existing Impervious Surface	Description of Construction Controls (SWPPP/WPCP/TBD) ⁷	Post-Construction Treatment Control Type, Quantity ⁸	Anticipated Project Delivery Schedule		Construction Period	
		Co.	Route	Begin	End	PA&ED											PS&E	Start	End	
				Begin PM	End PM															Date
47	06-0R100	KER	5	9.5	12	5	GRAPEVINE INTERCHANGE - RELOCATE INTERCHANGE - IN KERN COUNTY NEAR GRAPEVINE FROM 0.7 MI SOUTH OF GRAPEVINE UC TO 0.5 MI SOUTH OF CALIFORNIA AQUEDUCT	Grapevine Creek	N	401	No long term impacts anticipated	235	181	341.5	SWPPP	N	6/1/2020	2/1/2021	11/1/2021	7/1/2024
48	06-0R110	KER	119	13.5	18.2	5	KER-119/FRE-198 CULVERTS - UPGRADE CULVERTS - IN KERN COUNTY NEAR BAKERSFIELD, ALSO ON FRE-198 NEAR COALINGA AT VARIOUS LOCATIONS	-	N	N/A	No long term impacts anticipated	0.1	0	0	WPCP	E	5/22/2017	11/1/2018	9/2/2019	5/1/2020
49	06-0R140	KER	99	10.5	20.5	5	SR99 TAFT HIGHWAY 2R REHAB - 2R PAVEMENT REHABILITATION - ON ROUTE 99 IN KERN COUNTY NEAR BAKERSFIELD ALONG SOUTHBOUND ONLY FROM 1.2 MILE NORTH OF HERRING ROAD OVERCROSSING TO PACHECO ROAD UNDERCROSSING	Kern Island Canal, Arvin-Edison Canal	N	N/A	No long term impacts anticipated	0.1	0	0	WPCP	E	6/8/2016	1/20/2017	12/15/2017	8/1/2019
50	06-0R160	MAD	41	36.3	40.8	5	OAKHURST CAPM - PAVEMENT PRESERVATION (CAPM) - IN AND NEAR OAKHURST FROM 0.5 MI NORTH OF ROAD 426 TO 0.1 MI NORTH OF ALLEN ROAD.	Fresno River	N	N/A	No long term impacts anticipated	0.3	0	0	WPCP	E	8/17/2016	11/3/2017	7/20/2018	7/1/2019
51	06-0R170	TUL	99	28.9	31	5	TULARE WORKER SAFETY IMPROVEMENTS - ROADSIDE SAFETY IMPROVEMENTS - IN TULARE - FROM BARDSLEY RD. TO PROSPERITY AVE.	-	N	N/A	No long term impacts anticipated	4.15	4.15	11.5	WPCP	E	9/1/2017	11/1/2018	8/1/2019	1/2/2020
52	06-0R190	KER	223	15.7	16.3	5	ARVIN SR 223/184 ROUNDABOUT - INTERSECTION IMPROVEMENT - IN KERN COUNTY NEAR ARVIN AT STATE ROUTE 184 (WEEDPATCH HWY)	-	N	N/A	No long term impacts anticipated	11.14	0.03	0.9	SWPPP	C	8/21/2015	12/15/2018	9/9/2021	7/1/2022

Table 6-1: District 6 Anticipated Project Development and Construction Schedule

No.	EA	Project Location					Project Description ^{1,2}	Water Bodies Within or Adjacent to Project Limits ³	Dredge and Fill Activities (Y/N/NA) ⁴	Other Regional Water Board Permits Required ⁵	Potential and Actual Impacts of Project's Discharge ⁶	Disturbed Soil Area (acres)	Area of New Impervious Surface (acres)	Percentage of New Impervious Surface to Existing Impervious Surface	Description of Construction Controls (SWPPP/WPCP/TBD) ⁷	Post-Construction Treatment Control Type, Quantity ⁸	Anticipated Project Delivery Schedule		Construction Period	
		Co.	Route	Begin	End	PA&ED											PS&E	Start	End	
				Begin PM	End PM															
53	06-0R210	MAD	41	6.3	9.2	5	RANCHOS REHAB - ROADWAY REHABILITATION (3R) - IN MADERA COUNTY ABOUT 6 MI NORTH OF FRESNO FROM 0.1 MI NORTH OF AVENUE 15 TO 0.1 MI SOUTH OF RTE. 145	-	N	N/A	No long term impacts anticipated	42	5	TBD	SWPPP	C	9/1/2019	10/1/2019	3/1/2022	12/1/2023
54	06-0S050	KER	166	17.3	17.7	5	CALIF AQUEDUCT BRIDGE REHAB - BRIDGE REHABILITATION/SEISMIC RETROFIT - IN KERN COUNTY ABOUT 7 MILES WEST OF METTLER FROM 0.1 MILES WEST TO 0.2 MILES EAST OF CALIFORNIA AQUEDUCT	California Aqueduct	N	N/A	No long term impacts anticipated	15.78	0	0	SWPPP	E	7/15/2018	9/1/2019	8/16/2021	12/15/2022
55	06-0S310	TUL	190	15.1	16.9	5	PORTERVILLE MEDIAN BARRIER - CONSTRUCT CONCRETE MEDIAN BARRIER - IN PORTERVILLE FROM PROSPECT ST TO PLANO ST	Tule River, Poplar Ditch	N	N/A	No long term impacts anticipated	2.14	2.14	21.7	SWPPP	E	7/19/2016	5/25/2017	2/16/2018	8/16/2018
56	06-0S311	TUL	190	15.1	16.9	5	PORTERVILLE MEDIAN BARRIER REPLACEMENT PLANTING - REPLACEMENT PLANTING - IN PORTERVILLE FROM PROSPECT ST. TO PLANO ST.	Tule River, Poplar Ditch	N	N/A	No long term impacts anticipated	0	0	0	WPCP	E	-	-	3/15/2019	10/1/2022
57	06-0S340	TUL	198	11.7	19.7	5	VISALIA 2R REHAB - PAVEMENT REHABILITATION (2R) - IN TULARE COUNTY IN VISALIA FROM LOVER'S LANE UNDERCROSSING TO JUNCTION 198/245	Evans Ditch, Packwood Creek, Tulare IC, Cameron Creek, Deep Creek, Extension Ditch, Johnson Slough, Outside Creek, Catron Ditch, Locust Grove Ditch, Friant-Kern Canal	N	401	No long term impacts anticipated	16.8	4.58	55.7	SWPPP	C	12/3/2015	12/22/2016	2/5/2018	12/17/2018

Table 6-1: District 6 Anticipated Project Development and Construction Schedule

No.	EA	Project Location					Project Description ^{1,2}	Water Bodies Within or Adjacent to Project Limits ³	Dredge and Fill Activities (Y/N/NA) ⁴	Other Regional Water Board Permits Required ⁵	Potential and Actual Impacts of Project's Discharge ⁶	Disturbed Soil Area (acres)	Area of New Impervious Surface (acres)	Percentage of New Impervious Surface to Existing Impervious Surface	Description of Construction Controls (SWPPP/WPCP/TBD) ⁷	Post-Construction Treatment Control Type, Quantity ⁸	Anticipated Project Delivery Schedule		Construction Period	
		Co.	Route	Begin	End	PA&ED											PS&E	Start	End	
				Begin PM	End PM															
						RB ⁹											Date	Date	Date	Date
58	06-0S370	FRE	41	R0.1	7.1		EXCELSIOR EXPRESSWAY II -2-LN EXPRESSWAY TO 4-LN EXPRESSWAY - IN FRESNO COUNTY, ON ROUTE 41, 0.2 KM NORTH OF EXCELSIOR AVENUE TO 0.2 KM NORTH OF ELKHORN AVENUE		TBD	TBD	TBD	TBD	TBD	TBD	TBD	TBD	12/15/2005	8/21/2020	9/15/2021	7/1/2024
59	06-0S450	KER	99	23.6	24.1	5	BAKERSFIELD HIGHWAY LIGHTING - INSTALL HIGHWAY LIGHTING - IN BAKERSFIELD FROM BRUNDAGE LANE OC TO MINKLER UP	Kern River	N	N/A	No long term impacts anticipated	0.81	0.002	0	WPCP	E	11/23/2015	12/15/2017	12/1/2018	5/1/2019
60	06-0S460	FRE	99	0.9	5	5	KINGSBURG 99 REHAB - PAVEMENT REHABILITATION (2R) - IN FRESNO COUNTY IN AND NEAR KINGSBURG AND SELMA FROM ROUTE 99/201 SEPARATION TO 0.3 MILES SOUTH OF SECOND STREET UNDERCROSSING	Selma Colony Canal, Ward Drainage Canal, Big Elow Ditch, Paladine Canal	N	N/A	No long term impacts anticipated	9.4	0	TBD	SWPPP	E	7/6/2017	6/5/2018	6/4/2019	8/5/2020
61	06-0S470	KER	58	55.4	59.7	5	COTTONWOOD EAST REHAB - PAVEMENT REHABILITATION (2R) - IN BAKERSFIELD FROM COTTONWOOD RD. UNDERCROSSING TO 0.3 MILES EAST OF RTE 58/184 SEPARATION	East Side Canal	N	N/A	No long term impacts anticipated	36.5	5.2	TBD	SWPPP	E	6/29/2016	11/3/2016	2/2/2018	7/1/2019
62	06-0S490	KIN	5	0	9	5	LOST HILLS RUBBER REHAB - PAVEMENT REHABILITATION (2R) - IN KINGS COUNTY FROM KERN COUNTY LINE TO 0.9 MILES SOUTH OF EQUIPMENT UNDERCROSSING	-	N	N/A	No long term impacts anticipated	0.5	0	0	WPCP	E	6/5/2017	7/14/2017	5/14/2018	7/5/2019
63	06-0S510	KER	223	21	21.3	5	DERBY STREET SIGNALIZATION - INSTALL TRAFFIC SIGNALS - IN AND NEAR ARVIN FROM 0.2 MI. WEST OF DERBY STREET (EL TEJON HIGHWAY) TO KING STREET	-	N	N/A	No long term impacts anticipated	0.45	0.34	20.9	WPCP	E	8/10/2015	12/1/2017	8/1/2019	3/1/2020

Table 6-1: District 6 Anticipated Project Development and Construction Schedule

No.	EA	Project Location					Project Description ^{1,2}	Water Bodies Within or Adjacent to Project Limits ³	Dredge and Fill Activities (Y/N/NA) ⁴	Other Regional Water Board Permits Required ⁵	Potential and Actual Impacts of Project's Discharge ⁶	Disturbed Soil Area (acres)	Area of New Impervious Surface (acres)	Percentage of New Impervious Surface to Existing Impervious Surface	Description of Construction Controls (SWPPP/WPCP/TBD) ⁷	Post-Construction Treatment Control Type, Quantity ⁸	Anticipated Project Delivery Schedule		Construction Period	
		Co.	Route	Begin	End	PA&ED											PS&E	Start	End	
				Begin PM	End PM															
						RB ⁹											Date	Date	Date	Date
64	06-0S550	KER	99	32.4		5	LERDO CANAL MEDIAN GAP CLOSURE - MEDIAN DECK CLOSURE - NEAR BAKERSFIELD AT LERDO CANAL	-	N	N/A	No long term impacts anticipated	0.02	0.02	0	WPCP	E	4/11/2016	9/15/2017	6/30/2018	3/30/2020
65	06-0S610	Var	Var	Var	Var	5	KERN WIRE THEFT RESTORATION II - WIRE THEFT RESTORATION - IN KERN, KINGS AND FRESNO COUNTIES AT VARIOUS LOCATIONS ON ROUTES 5, 46, 58, 99, 178 AND 204	-	N	N/A	No long term impacts anticipated	4.67	0.84	0	WPCP	E	4/27/2015	10/20/2016	10/16/2017	3/16/2020
66	06-0S620	KER	99	Var	Var	5	SR 99 MVDS - INSTALL VEHICLE DETECTION SYSTEMS (VDS) - STATE ROUTE 99 IN KERN COUNTY, PM 0.3/15.9, PM 21.8/57.3	-	N	N/A	No long term impacts anticipated	0.1	0	TBD	WPCP	E	10/7/2015	10/25/2016	7/7/2017	5/1/2018
67	06-0S830	FRE	5	44	45	5	TUMEY GULCH III - REHABILITATE ABUTMENTS AND APPROACH SLABS. - IN FRESNO COUNTY AT TUMEY GULCH	-	N	N/A	No long term impacts anticipated	22.3	0	0	SWPPP	E	7/31/2018	10/1/2019	7/3/2020	7/3/2023
68	06-0T010	KER	5	1.22	82.01	5	ROUTE 5, KERN CO VDS - INSTALL VEHICLE DETECTION SYSTEMS - IN KERN COUNTY FROM LOS ANGELES COUNTY LINE TO KINGS COUNTY LINE	-	N	N/A	No long term impacts anticipated	1.75	0.09	0	WPCP	E	7/10/2017	4/6/2018	5/3/2019	7/4/2020
69	06-0T020	KIN	5	VAR	VAR	5	ROUTE 5, KINGS/FRESNO VDS - INSTALL VEHICLE DETECTION SYSTEMS - IN KINGS COUNTY FROM KERN COUNTY LINE TO FRESNO COUNTY LINE	-	N	N/A	No long term impacts anticipated	1.5	0.09	0	WPCP	E	7/10/2017	9/28/2018	4/22/2019	12/31/2019
70	06-0T030	KER KIN FRE	5	VAR	VAR	5	ROUTE 5, KERN/KINGS/FRESNO VDS - INSTALL VEHICLE DETECTION SYSTEMS - IN FRESNO COUNTIES FROM LOS ANGELES COUNTY LINE TO MERCED COUNTY LINE	-	N	N/A	No long term impacts anticipated	1	0.09	TBD	WPCP	E	7/10/2017	4/19/2019	4/10/2020	7/2/2021

Table 6-1: District 6 Anticipated Project Development and Construction Schedule

No.	EA	Project Location					Project Description ^{1,2}	Water Bodies Within or Adjacent to Project Limits ³	Dredge and Fill Activities (Y/N/NA) ⁴	Other Regional Water Board Permits Required ⁵	Potential and Actual Impacts of Project's Discharge ⁶	Disturbed Soil Area (acres)	Area of New Impervious Surface (acres)	Percentage of New Impervious Surface to Existing Impervious Surface	Description of Construction Controls (SWPPP/WPCP/TBD) ⁷	Post-Construction Treatment Control Type, Quantity ⁸	Anticipated Project Delivery Schedule		Construction Period		
		Co.	Route	Begin	End	PA&ED											PS&E	Start	End		
				Begin PM	End PM																
						RB ⁹											Date	Date	Date	Date	
71	06-0T200	KER	99	0	19.5	5	KERN 99 N/B 2R - PAVEMENT REHABILITATION (2R) - NEAR BAKERSFIELD FROM RTE 5/99 SEPARATION TO PANAMA LANE OC - NORTHBOUND ONLY	Tecuya Creek, Kern Island Drain	N	N/A	No long term impacts anticipated	94.6	0	0	SWPPP	E		8/1/2017	2/1/2018	2/15/2019	12/1/2021
72	06-0T210	MAD	99	22.7	29.4	5	CHOWCHILLA 2R REHAB - PAVEMENT REHABILITATION (2R) - IN AND NEAR CHOWCHILLA FROM THE SR152/99 SEPARATION TO THE MERCED COUNTY LINE.	Berenda Slough, Ash Slough	N	N/A	No long term impacts anticipated	0.9	0.2	TBD	WPCP	E		3/1/2017	10/2/2017	10/1/2018	7/1/2019
73	06-0T230	FRE	5	1.3	1.4	5	COALINGA SRRA WATER & WASTEWATER UPGRADE - UPGRADE DOMESTIC WATER, WASTEWATER AND IRRIGATION SYSTEMS - IN FRESNO COUNTY ON I-5 AT THE COALINGA SAFETY ROADSIDE REST AREA	-	N	N/A	No long term impacts anticipated	0.25	0.8	121.2	WPCP	E		8/14/2017	3/9/2018	7/1/2019	7/1/2020
74	06-0T240	KIN	41	34.7		5	KANSAS AVE INTERSECTION - INTERSECTION IMPROVEMENTS - IN KINGS COUNTY ABOUT 5 MILES SOUTH OF LEMOORE AT KANSAS AVENUE	Stratford IC	N	N/A	No long term impacts anticipated	4.7	1.28	27.3	WPCP Erosivity Waiver	E		9/2/2016	11/17/2017	9/12/2018	3/31/2019
75	06-0T250	FRE	33	69.3	70.9	5	FIREBAUGH ADA - CONSTRUCT ADA CURB RAMPS AND SIDEWALKS - IIN FRESNO COUNTY IN FIREBAUGH FROM MORRIS KYLE DRIVE TO CLYDE FANNON DRIVE	San Juaquin River	N	N/A	No long term impacts anticipated	1.69	0.86	TBD	WPCP	E		6/9/2017	12/3/2018	10/15/2019	9/19/2020
76	06-0T280	KER	99	21.6	24.7	5	BAKERSFIELD 99 IRRIGATION UPGRADE - UPGRADE IRRIGATION SYSTEM - IN BAKERSFIELD FROM PLANZ RD OC TO 0.10 MI NORTH OF CALIFORNIA AVE	-	N	N/A	No long term impacts anticipated	0.01	0	0	WPCP	E		6/2/2017	10/6/2018	7/1/2019	9/1/2020

Table 6-1: District 6 Anticipated Project Development and Construction Schedule

No.	EA	Project Location					Project Description ^{1,2}	Water Bodies Within or Adjacent to Project Limits ³	Dredge and Fill Activities (Y/N/NA) ⁴	Other Regional Water Board Permits Required ⁵	Potential and Actual Impacts of Project's Discharge ⁶	Disturbed Soil Area (acres)	Area of New Impervious Surface (acres)	Percentage of New Impervious Surface to Existing Impervious Surface	Description of Construction Controls (SWPPP/WPCP/TBD) ⁷	Post-Construction Treatment Control Type, Quantity ⁸	Anticipated Project Delivery Schedule		Construction Period	
		Co.	Route	Begin	End	PA&ED											PS&E	Start	End	
				Begin PM	End PM															
77	06-0T290	KIN	198	8.3	19.4	5	LEMOORE/HANFORD WORKER SAFETY - ROADSIDE SAFETY IMPROVEMENTS - IN AND NEAR LEMOORE FROM 0.6 MI WEST OF ROUTE 41/198 SEPARATION TO 0.4 MI EAST OF 10TH AVE OVERCROSSING	Lemoore Canal, Last Chance Ditch, Peoples Ditch	N	N/A	No long term impacts anticipated	4.54	3.22	TBD	WPCP	E	1/24/2017	2/27/2018	2/4/2019	8/30/2019
78	06-0T320	FRE	41	22.8	23.7	5	ROUTE 41 SB AUX LANE - CONSTRUCT AUXILIARY LANE - IN FRESNO COUNTY IN FRESNO ROUTE 41 SOUTH BOUND FROM M STREET UC TO TULARE AVENUE OC	-	N	N/A	No long term impacts anticipated	0.9	0.9	TBD	WPCP	E	-	4/14/2017	2/2/2018	10/1/2018
79	06-0T350	TUL	137	16.5	16.6	5	TULARE 99/137 RAMP SIGNALS - INSTALL SIGNALS NB & SB; WIDEN N/B RAMP - IN TULARE AT ROUTE 137/99 SEPARATION RAMP INTERSECTIONS	-	N	N/A	No long term impacts anticipated	0.3	0.25	TBD	WPCP	E	6/16/2017	9/1/2018	6/16/2019	7/15/2020
80	06-0T360	FRE	99	0	11.9	5	KINGSBURG TO FOWLER ROADSIDE SAFETY IMPROVEMENTS - ROADSIDE SAFETY IMPROVEMENTS. - IN FRESNO AND TULARE COUNTIES FROM 0.2 MI SOUTH OF MENDOCINO AVE OVERCROSSING TO 0.4 MI NORTH OF AMERICAN AVE OVERCROSSING	Kings River	N	N/A	No long term impacts anticipated	2.49	2.02	TBD	WPCP	E	1/11/2017	10/2/2017	9/1/2018	7/15/2019
81	06-0T500	MAD	41	5.2	34.7	5	RANCHOS TO OAKHURST RUMBLE STRIP - CONSTRUCT CENTER LINE RUMBLE STRIP - IN MADERA COUNTY NEAR COARSEGOLD FROM 0.3 MI. SOUTH OF AVE 14 TO 0.8 MI SOUTH OF SR 49	-	N	N/A	No long term impacts anticipated	0.0015	0	0	WPCP	E	5/6/2015	11/20/2015	8/11/2016	10/1/2017
82	06-0T510	KIN	198	18.4	18.4	5	KINGS 198 REDINGTON SIGNAL - INSTALL SIGNALS AND MODIFY CURB RAMPS - IN HANFORD AT WESTBOUND OFF-RAMP INTERSECTION TO REDINGTON/4TH STREET	Kings River, Cross Creek	N	N/A	No long term impacts anticipated	0.1	0	TBD	WPCP	E	4/29/2016	1/13/2017	9/1/2017	5/15/2018

Table 6-1: District 6 Anticipated Project Development and Construction Schedule

No.	EA	Project Location					Project Description ^{1,2}	Water Bodies Within or Adjacent to Project Limits ³	Dredge and Fill Activities (Y/N/NA) ⁴	Other Regional Water Board Permits Required ⁵	Potential and Actual Impacts of Project's Discharge ⁶	Disturbed Soil Area (acres)	Area of New Impervious Surface (acres)	Percentage of New Impervious Surface to Existing Impervious Surface	Description of Construction Controls (SWPPP/WPCP/TBD) ⁷	Post-Construction Treatment Control Type, Quantity ⁸	Anticipated Project Delivery Schedule		Construction Period	
		Co.	Route	Begin	End	PA&ED											PS&E	Start	End	
				Begin PM	End PM															Date
83	06-0T950	KIN	33	3	5.9	5	KINGS 33/43 RUMBLE STRIPS - CONSTRUCT CENTER LINE AND SHOULDER RUMBLE STRIPS - IN KINGS COUNTY ON ROUTES 33 & 43 AT VARIOUS LOCATIONS	Kings River, Cross Creek	N	N/A	No long term impacts anticipated	0	0	0	WPCP	E	9/22/2016	6/9/2017	3/26/2018	6/1/2018
84	06-0U000	FRE	33	0	0	5	FIREBAUGH BRIDGE PILE REPAIR - BRIDGE PILE RESTORATION - IN AND NEAR FIREBAUGH AT POSO CANAL, HELM CANAL AND COLONY MAIN CANAL; ALSO KER-58 MAIN DRAIN CANAL	San Juaquin River	Y	401	No long term impacts anticipated	0.8	0.22	0	WPCP	E	10/1/2019	10/1/2020	7/15/2021	10/1/2022
85	06-0U010	FRE		0	0		D-6 GEOTECHNICAL BOREHOLE MITIGATION - IDENTIFY AND MITIGATE GEOTECHNICAL EXPLORATORY BOREHOLES. - IN DISTRICT 6 IN VARIOUS COUNTIES AT VARIOUS LOCATIONS	TBD	TBD	TBD	TBD	TBD	TBD	TBD	TBD	TBD	TBD	TBD	TBD	TBD
86	06-0U020	VAR	Var	Var	Var	5	CALIFORNIA TIGER SALAMANDER MITIGATION BANK - CALIFORNIA TIGER SALAMANDER MITIGATION BANK - VARIOUS LOCATIONS THROUGHOUT DISTRICT 6 AND DISTRICT 10	TBD	TBD	TBD	TBD	TBD	TBD	TBD	TBD	TBD	7/1/2017	11/13/2018	9/1/2019	9/1/2020
87	06-0U040	TUL		0	0	5	SR 63 & 137 VISALIA & EXETER RUMBLE STRIP - INSTALL CENTERLINE AND SHOULDER RUMBLE STRIPS - NEAR VISALIA ON STATE ROUTES 137 & 63 AT VARIOUS LOCATIONS	Bates Slough, Farmers Ditch, Inside Creek, Cottonwood Creek, Sand Creek	N	N/A	No long term impacts anticipated	0	0	0	WPCP	E	12/2/2019	6/1/2020	5/26/2021	5/30/2022
88	06-0U080	FRE	5	21	31	5	DERRICK CAPM - PAVEMENT PRESERVATION (CAPM) - IN FRESNO COUNTY ON I-5 FROM TUOLUMNE AVE OC TO 1.0 MI. NORTH OF RTE 33/5 SEPARATION	Cantua Creek, Salt Creek	N	N/A	No long term impacts anticipated	2.77	0.79	0.8	WPCP	E	12/22/2017	2/1/2018	11/15/2018	1/31/2020

Table 6-1: District 6 Anticipated Project Development and Construction Schedule

No.	EA	Project Location					Project Description ^{1,2}	Water Bodies Within or Adjacent to Project Limits ³	Dredge and Fill Activities (Y/N/NA) ⁴	Other Regional Water Board Permits Required ⁵	Potential and Actual Impacts of Project's Discharge ⁶	Disturbed Soil Area (acres)	Area of New Impervious Surface (acres)	Percentage of New Impervious Surface to Existing Impervious Surface	Description of Construction Controls (SWPPP/WPCP/TBD) ⁷	Post-Construction Treatment Control Type, Quantity ⁸	Anticipated Project Delivery Schedule		Construction Period		
		Co.	Route	Begin	End	PA&ED											PS&E	Start	End		
				Begin PM	End PM																
RB ⁹																	Date	Date	Date	Date	
89	06-0U090	FRE	168	45.8	65.9	5	SHAVER TO HUNTINGTON CAPM - PAVEMENT PRESERVATION (CAPM) - NEAR SHAVER LAKE FROM 0.1 MI. EAST OF WARBLER LANE TO KAISER PASS ROAD	-	N	N/A	No long term impacts anticipated	0	0	0	WPCP	E		6/2/2017	8/4/2017	7/2/2018	2/11/2019
90	06-0U100	KER	Var	Var	Var	5	ENOS LANE CAPM & ADA CURB RAMPS - PAVEMENT PRESERVATION (CAPM) - IN KERN COUNTY ON STATE ROUTE 43, NEAR BAKERSFIELD FROM STATE ROUTE 119 TO 0.3 MILE SOUTH OF NORIEGA ROAD & ON STATE ROUTE 119 FROM ENOS LANE TO ROUTE 5/119 SEPARATION	Kern River	N	N/A	No long term impacts anticipated	0.25	0.2	TBD	WPCP	E		8/1/2018	12/1/2019	11/1/2020	9/1/2022
91	06-0U110	KER	58	39.9	46	5	WEST ROSEDALE CAPM - PAVEMENT PRESERVATION (CAPM) - IN AND NEAR BAKERSFIELD FROM RTE 43 TO 0.1 MI WEST OF ALLEN ROAD	-	N	N/A	No long term impacts anticipated	6.28	0.12	TBD	WPCP	E		8/1/2018	8/1/2019	9/1/2022	11/1/2023
92	06-0U160	FRE	41	22	22.6	5	SOUTH FRESNO VIADUCT POLYESTER CONCRETE OVERLAY - DECK OVERLAY AND JOINT SEALS - IN FRESNO AT THE SOUTH FRESNO VIADUCT	-	N	N/A	No long term impacts anticipated	0.5	0	TBD	WPCP	E		9/1/2017	5/1/2018	4/1/2019	7/1/2020
93	06-0U170	MAD	99	9.74	9.74	5	SOUTH GATEWAY DRIVE OC DECK REHAB - BRIDGE DECK REHABILITATION - IN MADERA COUNTY NEAR MADERA AT SOUTH GATEWAY DRIVE OVERCROSSING BR. 41-0046K	-	N	N/A	No long term impacts anticipated	0.25	0	0	WPCP	E		12/2/2019	10/22/2020	7/19/2021	7/15/2022
94	06-0U230	TUL	99	0	0	5	TUL-FRE-MAD PUMPING PLANT UPGRADES - UPGRADE STORMWATER PUMPING PLANTS - IN TULARE, FRESNO AND MADERA COUNTIES AT VARIOUS LOCATIONS	-	N	N/A	No long term impacts anticipated	0.58	0	0	WPCP	E		7/13/2018	7/31/2019	7/2/2020	1/1/2022

Table 6-1: District 6 Anticipated Project Development and Construction Schedule

No.	EA	Project Location					Project Description ^{1,2}	Water Bodies Within or Adjacent to Project Limits ³	Dredge and Fill Activities (Y/N/NA) ⁴	Other Regional Water Board Permits Required ⁵	Potential and Actual Impacts of Project's Discharge ⁶	Disturbed Soil Area (acres)	Area of New Impervious Surface (acres)	Percentage of New Impervious Surface to Existing Impervious Surface	Description of Construction Controls (SWPPP/WPCP/TBD) ⁷	Post-Construction Treatment Control Type, Quantity ⁸	Anticipated Project Delivery Schedule		Construction Period	
		Co.	Route	Begin	End	PA&ED											PS&E	Start	End	
				Begin PM	End PM															
RB ⁹																				
95	06-0U240	KER	99, 204	0	0	5	KERN-KINGS PUMPING PLANT UPGRADES - UPGRADE STORMWATER PUMPING PLANTS - IN KERN AND KINGS COUNTIES AT VARIOUS LOCATIONS	-	N	N/A	No long term impacts anticipated	0.46	0	0	WPCP	E	7/13/2018	7/31/2019	5/11/2020	3/31/2021
96	06-0U280	TUL	245	1.39	4.19	5	WOODLAKE BRIDGE REPLACEMENT - BRIDGE REPLACEMENT - IN TULARE COUNTY NEAR WOODLAKE AT YOKOHL CREEK AND AT KAWEAH RIVER	Kaweah River, Yokul Creek	N	N/A	No long term impacts anticipated	3.1	0.4	4.2	SWPPP	C	12/13/2019	1/8/2021	10/8/2021	4/13/2023
97	06-0U290	KER	184	0.8	8.3	5	WEEDPATCH HWY 3R REHAB - ROADWAY REHABILITATION (3R) - IN KERN COUNTY NEAR WEEDPATCH FROM DUNSMERE ST. TO 0.1 MILE NORTH OF BRUNDAGE LANE	-	N	N/A	No long term impacts anticipated	39	8.15	TBD	SWPPP	E	7/1/2020	10/1/2021	12/15/2022	9/1/2024
98	06-0U300	TUL		0	0	5	KINGS AND TULARE CO WIRE THEFT RESTORATION - WIRE THEFT RESTORATION - IN KINGS AND TULARE COUNTIES ON VARIOUS ROUTES AT VARIOUS LOCATIONS	-	N	N/A	No long term impacts anticipated	12.9	0.25	TBD	WPCP	E	11/1/2017	6/1/2019	4/8/2020	8/1/2021
99	06-0U420	FRE	99	5.7	11.1	5	SELMA FOWLER REHAB - PAVEMENT REHABILITATION - IN AND NEAR SELMA FROM 0.1 MI SOUTH OF ROSE AVE UC TO MERCED ST. UC IN FRESNO COUNTY NEAR CITY OF SELMA FROM ROSE AVE UC BRIDGE TO END OF MERCED STREET UC BRIDGE	-	N	N/A	No long term impacts anticipated	110	7.41	16.7	SWPPP	E	12/2/2019	8/17/2020	8/19/2021	9/14/2023
100	06-0U430	KER	184	8.1	12.13	5	MORNING DRIVE 3R REHAB - ROADWAY REHABILITATION (3R) - IN AND NEAR BAKERSFIELD FROM 0.2 MI SOUTH OF EDISON HIGHWAY TO ROUTE 178	-	N	N/A		6.68	6.04	18.3	SWPPP	E	11/1/2019	4/23/2021	2/14/2022	11/11/2022

Table 6-1: District 6 Anticipated Project Development and Construction Schedule

No.	EA	Project Location					Project Description ^{1,2}	Water Bodies Within or Adjacent to Project Limits ³	Dredge and Fill Activities (Y/N/NA) ⁴	Other Regional Water Board Permits Required ⁵	Potential and Actual Impacts of Project's Discharge ⁶	Disturbed Soil Area (acres)	Area of New Impervious Surface (acres)	Percentage of New Impervious Surface to Existing Impervious Surface	Description of Construction Controls (SWPPP/WPCP/TBD) ⁷	Post-Construction Treatment Control Type, Quantity ⁸	Anticipated Project Delivery Schedule		Construction Period	
		Co.	Route	Begin	End	PA&ED											PS&E	Start	End	
				Begin PM	End PM															
RB ⁹																	Date	Date	Date	Date
101	06-0U450	FRE	168	18.9	T24.7	5	MORGAN CANYON CAPM - PAVEMENT PRESERVATION (CAPM) - NEAR PRATHER FROM SAMPLE ROAD TO OAK CREEK ROAD	-	N	N/A	-	0.09	0	0	WPCP	E	11/1/2019	8/15/2020	5/17/2021	9/17/2021
102	06-0U460	KIN	41	20.08	28.4	5	KETTLEMAN 2R REHAB - PAVEMENT REHABILITATION (2R) - NEAR KETTLEMAN CITY FROM QUAIL AVENUE TO NEVADA AVENUE	-	401	N/A	-	9.5	0	0	SWPPP	E	10/15/2021	8/15/2022	7/3/2023	11/1/2024
103	06-0U470	KER	5	82	87	5	LOST HILLS RUBBER REHAB II - PAVEMENT REHABILITATION (2R) - IN KERN COUNTY FROM 0.3 MI SOUTH OF TWISSELMAN RD OC TO KINGS COUNTY LINE	-	-	N/A	-	0.5	0	0	WPCP	E	7/1/2019	5/18/2020	4/12/2021	11/29/2021
104	06-0U480	KER	46	49	50.9	5	WASCO ROUTE 46 CAPM - PAVEMENT PRESERVATION (CAPM) - IN AND NEAR WASCO FROM 0.5 MI EAST OF WESTERN AVE TO RTE 43 JCT. SOUTH	-	-	N/A	N/A	0.25	0.02	TBD	WPCP	E	3/1/2019	10/15/2020	8/27/2021	1/14/2022
105	06-0U490	KER	204	5.1	6.7	5	GOLDEN EMPIRE CAPM - PAVEMENT PRESERVATION (CAPM) - IN BAKERSFIELD FROM F STREET TO RTE 99/204 SEPARATION	-	-	N/A	N/A	0.13	0.01	TBD	WPCP	E	8/15/2019	8/15/2020	6/15/2021	10/30/2021
106	06-0U510	KER	166	4.5	5	5	MARICOPA HIGHWAY REHAB - REHABILITATE ROADWAY W/LIME TREATMENT - IN KERN COUNTY ABOUT 4 MILES EAST OF MARICOPA FROM 1.5 MILES EAST OF PENTLAND RD TO BASIC SCHOOL RD.	-	N	N/A	No long term impacts anticipated	2.15	0.52	33	WPCP	E	8/16/2017	12/1/2017	7/16/2018	12/1/2018
107	06-0U520	MAD	99	13.1	19.6	5	BERENDA CAPM - PAVEMENT REHABILITATION (CAPM) - IN AND NEAR MADERA FROM 03. MI NORTH OF AVENUE 16 OC TO 0.9 MI NORTH OF AVENUE 20 OC	-	TBD	TBD	TBD	TBD	TBD	TBD	TBD	TBD	5/11/2016	10/1/2019	7/1/2020	10/1/2021

Table 6-1: District 6 Anticipated Project Development and Construction Schedule

No.	EA	Project Location					Project Description ^{1,2}	Water Bodies Within or Adjacent to Project Limits ³	Dredge and Fill Activities (Y/N/NA) ⁴	Other Regional Water Board Permits Required ⁵	Potential and Actual Impacts of Project's Discharge ⁶	Disturbed Soil Area (acres)	Area of New Impervious Surface (acres)	Percentage of New Impervious Surface to Existing Impervious Surface	Description of Construction Controls (SWPPP/WPCP/TBD) ⁷	Post-Construction Treatment Control Type, Quantity ⁸	Anticipated Project Delivery Schedule		Construction Period	
		Co.	Route	Begin	End	PA&ED											PS&E	Start	End	
				Begin PM	End PM															
						RB ⁹											Date	Date	Date	Date
108	06-0U670	MAD	145	8.06	11	5	MADERA 145 NORTH ADA RAMPS - INSTALL AND UPGRADE ADA CURB RAMPS - IN MADERA ON ROUTE 145 FROM AVENUE 13 TO TOZER ST.	-	N	N/A	No long term impacts anticipated	0.02	0	TBD	WPCP	E	9/1/2017	12/1/2018	9/15/2019	7/1/2021
109	06-0U710	MAD	Var	Var	Var	5	MADERA SHOULDER RUMBLE STRIPS - CONSTRUCT RUMBLE STRIPS - IN MADERA COUNTY ON SR 41 AT VARIOUS LOCATIONS; ALSO ON RTE 49 AND 145	-	N	N/A	No long term impacts anticipated	0	0	0	WPCP	E	4/29/2016	5/1/2017	3/15/2018	11/1/2018
110	06-0U720	TUL	198	R10.472	R11.2	5	BURKE TO BEN MADDOX RUMBLE STRIP - CONSTRUCT RUMBLE STRIPS - IN VISALIA FROM BURKE ST OVERCROSSING TO 0.5 MI EAST OF BEN MADDOX WAY OVERCROSSING (EASTBOUND ONLY)	-	N	N/A	No long term impacts anticipated	0.48	0.29	47	WPCP	E	6/9/2017	6/30/2017	3/20/2018	7/1/2019
111	06-0U770	TUL	99	22.3	22.3	5	RAINE REST AREA INFRASTRUCTURE UPGRADES - SEWER, WATER AND IRRIGATION UPGRADES - NEAR TIPTON AT THE RAINE SAFETY ROADSIDE REST AREA	-	N	N/A	No long term impacts anticipated	0.07	0	0	WPCP	E	7/18/2019	5/5/2021	1/1/2022	4/1/2024
112	06-0U830	TUL	245	7.4	7.6	5	NORTH VALENCIA BLVD IMPROVEMENT - CONSTRUCT SIDEWALK, CURB, GUTTER, CURB RAMPS & BIKE LANES - IN THE CITY OF WOODLAKE ON SR 245 FROM WHITNEY AVENUE (PM 7.4) TO SIERRA AVENUE (PM 7.6)	-	N	N/A	No long term impacts anticipated	0.81	0.39	1.85	WPCP	E	4/28/2017	3/31/2017	9/7/2017	-
113	06-0U850	KIN	41	R40.9	R41	5	BUSH IC IMPROVEMENT - INTERCHANGE IMPROVEMENTS - IN LEMOORE AT BUSH ST. UC	-	N	N/A	No long term impacts anticipated	15.75	6.23	100	SWPPP	E	9/15/2019	3/31/2022	2/16/2023	10/1/2027

Table 6-1: District 6 Anticipated Project Development and Construction Schedule

No.	EA	Project Location					Project Description ^{1,2}	Water Bodies Within or Adjacent to Project Limits ³	Dredge and Fill Activities (Y/N/NA) ⁴	Other Regional Water Board Permits Required ⁵	Potential and Actual Impacts of Project's Discharge ⁶	Disturbed Soil Area (acres)	Area of New Impervious Surface (acres)	Percentage of New Impervious Surface to Existing Impervious Surface	Description of Construction Controls (SWPPP/WPCP/TBD) ⁷	Post-Construction Treatment Control Type, Quantity ⁸	Anticipated Project Delivery Schedule		Construction Period		
		Co.	Route	Begin	End	PA&ED											PS&E	Start	End		
				Begin PM	End PM																
RB ⁹																		Date	Date	Date	Date
114	06-0U870	TUL	198	10.5	12	5	LOVERS LANE OPERATIONAL IMPROVEMENTS - OPERATIONAL IMPROVEMENTS - IN TULARE COUNTY IN VISALIA ON RTE 198 FROM 0.4 MI WEST OF LOVERS LANE UC TO VISTA AVE. POC AND ON ROUTE 216 FROM LOVERS LANE UC TO MILLCREEK PKWY	-	N	N/A	No long term impacts anticipated	0.58	0.47	0	WPCP	E		3/1/2019	5/3/2021	2/16/2022	2/16/2023
115	06-0U880	TUL	99	26.3	27.6	5	TULARE INTERCHANGE PROJECT - CONSTRUCT INTERCHANGE - IN TULARE COUNTY ON STATE ROUTE 99 FROM 0.9 MILES NORTH OF THE AVENUE 200 OC TO THE PAIGE ROAD OC	-	N	N/A	No long term impacts anticipated	42	13	86	SWPPP	E		4/1/2019	6/1/2021	8/1/2022	11/1/2024
116	06-0U940	VAR	Var	Var	Var	5	TUL-KIN-KER TREE REMOVAL - REMOVE DISEASED AND DEAD TREES - IN KERN, KINGS AND TULARE COUNTIES AT VARIOUS LOCATIONS ON VARIOUS ROUTES	-	N	N/A	No long term impacts anticipated	0.13	0	0	WPCP	E		8/3/2017	1/5/2018	8/30/2018	6/28/2019
117	06-0U950	FRE MAD	41	0	33.4	5	FRESNO AND MADERA COUNTY TREE REMOVAL - REMOVE DISEASED AND DEAD TREES - IN FRESNO AND MADERA COUNTIES ON VARIOUS ROUTES	-	N	N/A	No long term impacts anticipated	4.5	0	0	WPCP	E		9/1/2017	10/15/2017	6/30/2018	6/28/2019
118	06-0U990	KER	65	1.6	25.2	5	KERN SR 65 RUMBLE STRIPS - INSTALL CENTERLINE AND SHOULDER RUMBLE STRIPS - IN KERN COUNTY NEAR OF BAKERSFIELD FROM IMPERIAL STREET TO THE COUNTY LINE ROAD	-	N	N/A	No long term impacts anticipated	0.02	0	0	WPCP	E		4/10/2017	8/15/2017	4/1/2018	11/1/2018
119	06-0V020	MAD	41	5.6	6.5	5	ROAD 204 AND AVE 15 INTERSECTION IMPROVEMENTS - INTERSECTION IMPROVEMENTS - ON STATE ROUTE 41 IN MADERA COUNTY FROM 0.1 MILES SOUTH OF ROAD 204 TO 0.3 MILES NORTH OF AVENUE 15	-	N	N/A	No long term impacts anticipated	3.51	1.42	22	SWPPP	E		8/1/2017	TBD	12/1/2017	7/1/2018

Table 6-1: District 6 Anticipated Project Development and Construction Schedule

No.	EA	Project Location					Project Description ^{1,2}	Water Bodies Within or Adjacent to Project Limits ³	Dredge and Fill Activities (Y/N/NA) ⁴	Other Regional Water Board Permits Required ⁵	Potential and Actual Impacts of Project's Discharge ⁶	Disturbed Soil Area (acres)	Area of New Impervious Surface (acres)	Percentage of New Impervious Surface to Existing Impervious Surface	Description of Construction Controls (SWPPP/WPCP/TBD) ⁷	Post-Construction Treatment Control Type, Quantity ⁸	Anticipated Project Delivery Schedule		Construction Period	
		Co.	Route	Begin	End	PA&ED											PS&E	Start	End	
				Begin PM	End PM															
						RB ⁹											Date	Date	Date	Date
120	06-0V110	KIN	41	30.6	33	5	STRATFORD KINGS RIVER BRIDGE REPLACEMENT - REPLACE BRIDGE - IN KINGS COUNTY NEAR STRATFORD FROM 22ND AVENUE TO LAUREL AVENUE.	-	N	N/A	No long term impacts anticipated	13.9	0	0	SWPPP	E	4/2/2020	5/3/2021	4/18/2022	9/18/2023
121	06-0V120	MAD	99	R7	R7.5	5	COTTONWOOD CREEK BRIDGE REPLACEMENT (BR. NO. 41-0065 L/R&S) - REPLACE 3 BRIDGES; BR. NO. 41-0065 L/R/S - IN MADERA COUNTY ABOUT 2 MI. SOUTH OF MADERA FROM 0.3 MI SOUTH OF COTTONWOOD CREEK TO AVENUE 12 OVERCROSSING.	-	N	N/A	No long term impacts anticipated	2.9	0.1	0	SWPPP	E	7/1/2020	3/8/2021	3/2/2022	7/3/2023
122	06-0V270	FRE	41	R31.554	R31.554	5	FRIANT RAMP GUARDRAIL - INSTALL CONCRETE GUARDRAIL - IN FRESNO AT ROUTE 41 SOUTHBOUND ON-RAMP FROM EASTBOUND FRIANT RD	-	N	N/A	No long term impacts anticipated	0.15	0.06	0	WPCP	E	12/19/2016	8/1/2017	3/1/2018	7/1/2019
123	06-0V280	KER	184	0.9	1.1	5	Kern 184/Sunset Roundabout - CONSTRUCT ROUNDABOUT - NEAR WEEDPATCH FROM 0.1 MI SOUTH TO 0.1 MI NORTH OF SUNSENT BLVD	-	N	N/A	No long term impacts anticipated	3.15	1.12	86	SWPPP	E	8/1/2018	10/1/2019	8/1/2020	7/15/2021
124	06-0V300	KER	Var	Var	Var	5	KERN 33 & 119 CL RUMBLE STRIPS - CONSTRUCT CENTER LINE RUMBLE STRIPS - IN KERN COUNTY NEAR TAFT ON ROUTES 119 AND 33 AT VARIOUS LOCATIONS	-	N	N/A	No long term impacts anticipated	0	0	0	WPCP	E	11/18/2016	5/30/2017	1/15/2018	8/1/2018
125	06-0V320	FRE	168	11.7	30	5	SHEPHERD TO TOP OF THE 4-LANE RUMBLE STRIP - CONSTRUCT CENTER LINE RUMBLE STRIPS - IN FRESNO COUNTY FROM 0.3 MI EAST OF SHEPHERD AVE TO EAST JUNCTION AUBERRY ROAD	-	N	N/A	No long term impacts anticipated	0	0	0	WPCP	E	2/15/2018	6/22/2018	1/10/2019	7/1/2019

Table 6-1: District 6 Anticipated Project Development and Construction Schedule

No.	EA	Project Location					Project Description ^{1,2}	Water Bodies Within or Adjacent to Project Limits ³	Dredge and Fill Activities (Y/N/NA) ⁴	Other Regional Water Board Permits Required ⁵	Potential and Actual Impacts of Project's Discharge ⁶	Disturbed Soil Area (acres)	Area of New Impervious Surface (acres)	Percentage of New Impervious Surface to Existing Impervious Surface	Description of Construction Controls (SWPPP/WPCP/TBD) ⁷	Post-Construction Treatment Control Type, Quantity ⁸	Anticipated Project Delivery Schedule		Construction Period		
		Co.	Route	Begin	End	PA&ED											PS&E	Start	End		
				Begin PM	End PM																
RB ⁹																		Date	Date	Date	Date
126	06-0V560	FRE	99	16.03	16.03	5	ROUTE 99 CENTRAL AVE OFF RAMP SIGNAL - INTERSECTION IMPROVEMENT AT SR 99 SOUTHBOUND OFF RAMP AND CENTRAL AVENUE IN FRESNO COUNTY - IN FRESNO COUNTY ON ROUTE 99 FROM 0.4 MI N OF CHESTNUT AVE OC TO 0.4 MI S OF SOUTH CALWA OH	-	N	N/A	No long term impacts anticipated	0.84	0.2	22	WPCP	E		2/7/2017	6/5/2017	2/15/2018	7/2/2018
127	06-0V610	KER	119	28.3	31.28	5	PUMPKIN CENTER 3R REHAB - ROADWAY REHABILITATION (3R) - IN KERN COUNTY NEAR PUMPKIN CENTER FROM ASHE ROAD TO RTE 119/99 SEPARATION	-	N	N/A	No long term impacts anticipated	28	10	43	SWPPP	E		3/1/2021	11/1/2021	10/1/2022	3/1/2024
128	06-0V760	TUL	99	51.8	51.8	5	WARLOW SRRA INFRASTRUCTURE UPGRADES - UPGRADE WATER, WASTEWATER AND IRRIGATION SYSTEMS. - IN TULARE COUNTY NEAR KINGSBURG AT THE C. H. WARLOW SAFETY ROADSIDE REST AREA	-	N	N/A	No long term impacts anticipated	1.86	0.1	TBD	SWPPP	TBD		1/7/2019	10/1/2019	9/1/2020	8/1/2022
129	06-0V770	KER	155	68.2	R68.6	5	USACE LAKE ISABELLA OVERSIGHT PROJECTS - REALIGN ROADWAY - IN KERN COUNTY NEAR LAKE ISABELLA FROM 1.2 MI EAST OF HUNGRY GULCH RD TO 0.1 MI WEST OF FRENCH GULCH BRIDGE.	Lake Isabella	TBD	TBD	TBD	TBD	TBD	TBD	TBD	TBD		5/31/2017		8/31/2017	12/29/2017
130	06-0V780	FRE	VAR	0	0	5	FRE-41;99;168 & 180 FIBER OPTIC - INSTALL FIBER OPTIC SYSTEM - IN FRESNO COUNTY IN FRESNO AND CLOVIS ON ROUTES 41, 99, 168 AND 180 AT VARIOUS LOCATIONS	-	N	N/A	No long term impacts anticipated	1.26	0.06	TBD	WPCP	E		12/2/2019	10/26/2021	8/1/2022	2/1/2024
131	06-0V850	KER	43	0.11	2.1	5	KERN 43 SHOULDER WIDENING - WIDEN SHOULDERS - NEAR BAKERSFIELD FROM SR 119 TO PANAMA LANE	-	N	N/A	No long term impacts anticipated	10.94	2.5	35	SWPPP	E		12/1/2019	11/1/2021	7/1/2022	12/1/2022

Table 6-1: District 6 Anticipated Project Development and Construction Schedule

No.	EA	Project Location					Project Description ^{1,2}	Water Bodies Within or Adjacent to Project Limits ³	Dredge and Fill Activities (Y/N/NA) ⁴	Other Regional Water Board Permits Required ⁵	Potential and Actual Impacts of Project's Discharge ⁶	Disturbed Soil Area (acres)	Area of New Impervious Surface (acres)	Percentage of New Impervious Surface to Existing Impervious Surface	Description of Construction Controls (SWPPP/WPCP/TBD) ⁷	Post-Construction Treatment Control Type, Quantity ⁸	Anticipated Project Delivery Schedule		Construction Period		
		Co.	Route	Begin	End	PA&ED											PS&E	Start	End		
				Begin PM	End PM																
RB ⁹																		Date	Date	Date	Date
132	06-0V860	KIN	41	8.1	R48.28	5	KINGS 41 RUMBLE STRIPS - CONSTRUCT CENTER LINE AND SHOULDER RUMBLE STRIPS - IN KINGS COUNTY FROM ROUTE 33 TO FRESNO COUNTY LINE AT VARIOUS LOCATIONS	-	N	N/A	No long term impacts anticipated	0	0.06	0	WPCP	E		2/7/2017	10/11/2017	7/9/2018	1/11/2019
133	06-0V910	VAR	99	0	0	5	ZERO EMISSIONS VEHICLE CHARGING STATIONS - INSTALL ZERO EMISSION VEHICLE CHARGING STATIONS - IN FRESNO, TULARE AND KERN COUNTIES ON RTE 99 AND I-5 AT VARIOUS LOCATIONS	-	N	N/A	No long term impacts anticipated	0.25	0.05	0	WPCP	E		4/27/2017	12/1/2017	10/15/2018	7/1/2019
134	06-0V920	FRE, MAD, KER	41,99,168, 180	VAR	VAR	5	TMS REPAIR SERVICE CONTRACT - REPAIR TMS ELEMENTS - IN FRESNO COUNTY ON VARIOUS ROUTES; VARIOUS LOCATIONS; ALSO ON KER-99 & MAD-41	-	N	N/A	No long term impacts anticipated	0	0	0	WPCP	E		6/16/2017	-	-	-
135	06-0V930	FRE, MAD, KER	41,99,168, 180	VAR	VAR	5	TMS ELEMENT UPGRADE/REPAIR - UPGRADE AND REPAIR TMS ELEMENTS - IN FRESNO COUNTY ON VARIOUS ROUTES; VARIOUS LOCATIONS; ALSO ON KER-99, 58 & MAD-99	-	N	N/A	No long term impacts anticipated	1.08	0	0	WPCP	E		10/1/2018	2/18/2020	11/16/2020	8/2/2021
136	06-0V980	FRE	43	0	7.34	5	HIGHLAND RUMBLE STRIP - CONSTRUCT CENTER LINE AND SHOULDER RUMBLE STRIPS - IN FRESNO COUNTY IN AND NEAR SELMA FROM KINGS COUNTY LINE TO NEBRASKA AVE.	-	N	N/A	No long term impacts anticipated	0	0	0	WPCP	E		6/26/2017	7/1/2018	3/15/2019	8/1/2019
137	06-0W150	KER	VAR	0	39.57	5	KER204 ADA RAMP REPAIR - ADA UPGRADES - IN KERN COUNTY ON RTE 204 FROM RTE 204/58 SEPARATION TO L STREET	-	N	N/A	No long term impacts anticipated	0.18	0	0	WPCP	E		8/1/2019	4/15/2021	1/20/2022	8/15/2022

Table 6-1: District 6 Anticipated Project Development and Construction Schedule

No.	EA	Project Location					Project Description ^{1,2}	Water Bodies Within or Adjacent to Project Limits ³	Dredge and Fill Activities (Y/N/NA) ⁴	Other Regional Water Board Permits Required ⁵	Potential and Actual Impacts of Project's Discharge ⁶	Disturbed Soil Area (acres)	Area of New Impervious Surface (acres)	Percentage of New Impervious Surface to Existing Impervious Surface	Description of Construction Controls (SWPPP/WPCP/TBD) ⁷	Post-Construction Treatment Control Type, Quantity ⁸	Anticipated Project Delivery Schedule		Construction Period	
		Co.	Route	Begin	End	PA&ED											PS&E	Start	End	
				Begin PM	End PM															Date
138	06-0W160	KER	5	7.5	9	5	GRAPEVINE CULVERT REPAIR - UPGRADE DRAINAGE SYSTEMS - NEAR GRAPEVINE FROM 0.5 MI NORTH OF TRUCK ESCAPE RAMP TO 0.4 MI SOUTH OF GRAPEVINE UC	TBD	TBD	TBD	TBD	TBD	TBD	TBD	TBD	TBD	3/1/2021	11/9/2021	9/14/2022	9/14/2025
139	06-0W170	FRE	41	R27.6	R28.3	5	ASHLAN/SHAW AUX LANE - CONSTRUCT AUXILIARY LANE - IN FRESNO FROM NORTHBOUND ON-RAMP FROM ASHLAN AVE TO NORTHBOUND OFF-RAMP TO SHAW AVE	-	N	N/A	No long term impacts anticipated	3.5	1.2	23	SWPPP	E	11/15/2019	5/3/2021	2/18/2022	7/3/2023
140	06-0W180	VAR	VAR	VAR	VAR	5	TMS DETECTION REPAIR - REPAIR TMS DETECTION SYSTEMS - IN VARIOUS COUNTIES ON VARIOUS ROUTES.	-	TBD	TBD	TBD	TBD	TBD	TBD	TBD	TBD	4/16/2020	10/21/2022	10/31/2025	1/8/2030
141	06-0W190	MAD	145	24.5	25.46	5	AUSTIN QUARRY SR 145 DRIVEWAY MITIGATION - CONSTRUCT LEFT & RIGHT TURN CHANNELIZATION WITH ACCELERATION LANES - IN MADERA COUNTY ABOUT 13 MILES NORTH OF MADERA FROM 1.0 MILES WEST OF SR 41 TO SR 41	-	TBD	TBD	TBD	TBD	TBD	TBD	TBD	TBD	6/30/2018	-	12/1/2018	7/1/2020
142	06-0W360	MAD	145	8.06	9.6	5	MADERA 145 SOUTH ADA CURB RAMPS - UPGRADE/INSTALL ADA CURB RAMPS AND SIDEWALKS - ON STATE ROUTE 145 IN MADERA COUNTY IN THE CITY OF MADERA FROM AVENUE 13 TO SIXTH STREET.	-	TBD	TBD	TBD	TBD	TBD	TBD	TBD	TBD	TBD	TBD	TBD	TBD

Table 6-1: District 6 Anticipated Project Development and Construction Schedule

No.	EA	Project Location					Project Description ^{1,2}	Water Bodies Within or Adjacent to Project Limits ³	Dredge and Fill Activities (Y/N/NA) ⁴	Other Regional Water Board Permits Required ⁵	Potential and Actual Impacts of Project's Discharge ⁶	Disturbed Soil Area (acres)	Area of New Impervious Surface (acres)	Percentage of New Impervious Surface to Existing Impervious Surface	Description of Construction Controls (SWPPP/WPCP/TBD) ⁷	Post-Construction Treatment Control Type, Quantity ⁸	Anticipated Project Delivery Schedule		Construction Period	
		Co.	Route	Begin	End	PA&ED											PS&E	Start	End	
				Begin PM	End PM															Date
143	06-0W390	TUL	198	9.23	R9.74	5	WATSON STREET OPERATIONAL IMPROVEMENTS - CONSTRUCT OPERATIONAL IMPROVEMENTS INCLUDING RAMP IMPROVEMENTS - ON ROUTE 198 IN TULARE COUNTY IN VISALIA FROM S. GIDDINGS OVERCROSSING TO WATSON WEST OVERCROSSING	-	TBD	TBD	TBD	TBD	TBD	TBD	TBD	TBD	9/22/2017	12/12/2022	12/22/2025	2/26/2030
144	06-0W410	KER	46	26.8	47.02	5	LOST HILLS TO WASCO RUMBLE STRIP - INSTALL RUMBLE STRIPS - IN KERN COUNTY IN AND NEAR LOST HILLS FROM 0.7 MI WEST OF BROWN MATERIAL RD TO SCOFIELD AVE.	-	-	-	No long term impacts anticipated	0.25	0	0	WPCP	E	3/23/2020	11/30/2020	9/24/2021	12/8/2025
145	06-0W430	KER	5	15.82	R15.82	5	I-5 FAST FREIGHT CORRIDOR I-5/RTE 99 SEPARATION - IMPROVE BRIDGE VERTICAL CLEARANCE - IN KERN COUNTY NEAR WHEELER RIDGE AT RTE. 99/5 SEPARATION (NORTHBOUND)	-	TBD	TBD	No long term impacts anticipated	6.7	0.8	13	WPCP	E	4/2/2018	6/1/2018	12/14/2018	12/13/2019
146	06-0W460	KER	5	12.47	12.47	5	I-5 FREIGHT CORRIDOR CALIFORNIA AQUEDUCT - IMPROVE LOAD RATING - IN KERN COUNTY NEAR GRAPEVINE AT CALIFORNIA AQUEDUCT	California Aqueduct	N/A	N/A	No long term impacts anticipated	0.13	0.01	0	WPCP	E	4/2/2018	6/1/2018	12/14/2018	12/13/2019
147	06-0W790	TUL	99	7.1	13	5	EARLIMART TO PIXLEY 2R REHAB - PAVEMENT REHABILITATION (2R) - NEAR EARLIMART FROM AVENUE 56 OVERCROSSING TO 0.2 MI NORTH OF AVENUE 100 OVERCROSSING (COURT ST.)	-	N/A	N/A	No long term impacts anticipated	95.8	32.9	52	SWPPP	E	1/3/2022	9/3/2023	7/15/2024	3/11/2027

Table 6-1: District 6 Anticipated Project Development and Construction Schedule

No.	EA	Project Location					Project Description ^{1,2}	Water Bodies Within or Adjacent to Project Limits ³	Dredge and Fill Activities (Y/N/NA) ⁴	Other Regional Water Board Permits Required ⁵	Potential and Actual Impacts of Project's Discharge ⁶	Disturbed Soil Area (acres)	Area of New Impervious Surface (acres)	Percentage of New Impervious Surface to Existing Impervious Surface	Description of Construction Controls (SWPPP/WPCP/TBD) ⁷	Post-Construction Treatment Control Type, Quantity ⁸	Anticipated Project Delivery Schedule		Construction Period	
		Co.	Route	Begin	End	PA&ED											PS&E	Start	End	
				Begin PM	End PM															
148	06-0W800	FRE	99	20	24.4	5	DOWNTOWN TO CLINTON REHAB - ROADWAY REHABILITATION (3R) - IN FRESNO FROM 0.1 MI NORTH OF CALIFORNIA AVE. OVERCROSSING TO CLINTON AVE. OVERCROSSING.	-	N/A	N/A	No long term impacts anticipated	150	15	21	SWPPP	E	7/1/2019	4/1/2023	4/20/2026	6/20/2030
149	06-0W890	FRE	99	0	0	5	FRESNO 99/180 RECYCLED WATER PROJECT - CONVERT IRRIGATION SYSTEMS TO RECYCLED WATER - IN FRESNO ON ROUTES 99 AND 180 AT VARIOUS LOCATIONS.	-	N/A	N/A	No long term impacts anticipated	1.5	0	0	SWPPP	E	10/2/2017	11/1/2017	7/27/2018	2/12/2026
150	06-0W950	FRE	41	24.5	24.5	5	180 CONNECTOR GUARD RAIL - REMOVE METAL BEAM GUARDRAIL AND REPLACE WITH CONCRETE BARRIER - ON ROUTE 41 IN THE CITY OF FRESNO AT THE WESTBOUND 180 CONNECTOR RAMP	-	N/A	N/A	No long term impacts anticipated	0.2	0.04	0	WPCP	E	10/2/2017	11/1/2018	12/10/2021	2/24/2026
151	06-0W980	FRE	168	R9.2	R9.2	5	TEMPERANCE/ALLUVIAL INTERSECTION IMPROVEMENT - INTERSECTION IMPROVEMENT - IN CLOVIS AT THE INTERSECTION OF TEMPERANCE AND ALLUVIAL	-	N/A	N/A	No long term impacts anticipated	0.71	-0.07	0	WPCP	E	6/26/2017	TBD	TBD	TBD
152	06-0X040	TUL	65	0	15.1	5	PORTERVILLE 65 & 190 RUMBLE STIPS - INSTALL CENTERLINE AND SHOULDER RUMBLE STRIPS - IN AND NEAR PORTERVILLE ON ROUTES 65 & 190 AT VARIOUS LOCATIONS	-	N/A	N/A	No long term impacts anticipated	0.45	0.35	0	WPCP	E	1/9/2020	7/15/2020	7/21/2021	7/20/2022
153	06-0X200	KER	119	R10	R13.3	5	CHERRY AVE REVEGETATION AND DRAINAGE - REPAIR AND INSTALL DRAINAGE SYSTEMS - ON ROUTE 119 IN KERN COUNTY FROM 0.75 MI WEST OF CHERRY AVENUE TO TUPMAN ROAD	-	401	N/A	No long term impacts anticipated	1.7	0	0	SWPPP	E	5/7/2018	10/1/2018	4/1/2019	7/1/2022

Table 6-1: District 6 Anticipated Project Development and Construction Schedule

No.	EA	Project Location					Project Description ^{1,2}	Water Bodies Within or Adjacent to Project Limits ³	Dredge and Fill Activities (Y/N/NA) ⁴	Other Regional Water Board Permits Required ⁵	Potential and Actual Impacts of Project's Discharge ⁶	Disturbed Soil Area (acres)	Area of New Impervious Surface (acres)	Percentage of New Impervious Surface to Existing Impervious Surface	Description of Construction Controls (SWPPP/WPCP/TBD) ⁷	Post-Construction Treatment Control Type, Quantity ⁸	Anticipated Project Delivery Schedule		Construction Period		
		Co.	Route	Begin	End	PA&ED											PS&E	Start	End		
				Begin PM	End PM																
RB ⁹																		Date	Date	Date	Date
154	06-0X590	FRE	99	21.67	21.67	5	FRE 99/180 CONNECTOR CONCRETE GUARDRAIL - REMOVE MBGR AND REPLACE IT WITH CONCRETE BARRIER - IN FRESNO COUNTY IN FRESNO ON ROUTE 99 NORTHBOUND OFF RAMP TO EASTBOUND ROUTE 180	-		N/A	No long term impacts anticipated	0.3	0.01	0	WPCP	E	7/23/2018	-	10/1/2019	5/1/2020	
155	06-1HT00	MAD	VAR	VAR	VAR	5	HST - SAN JOSE TO MERCED SEGMENT - HIGH SPEED TRAIN SYSTEM - FROM SOUTH OF THE DIRIDON STATION IN SAN JOSE TO EAST OF THE ROUTE 152/233 INTERCHANGE SOUTH OF THE CITY OF CHOWCHILLA AT VARIOUS COUNTIES	TBD	TBD	TBD	TBD	TBD	TBD	TBD	TBD	TBD	6/30/2018	TBD	TBD	TBD	
156	06-2HT10	FRE	99	23.7	26.2	5	SR 99 REALIGNMENT FOR HST - ROUTE 99 REALIGNMENT - IN THE CITY OF FRESNO, ON ROUTE 99 FROM CLINTON AVENUE TO ASHLAN AVENUE	-	N	N/A	No long term impacts anticipated	187	18	82	SWPPP	E	4/15/2013	1/30/2015	7/25/2016	6/30/2018	
157	06-32551	KIN	198	8.9	10.1	5	19th Ave Landscape - LANDSCAPING AND PLANT ESTABLISHMENT - IN LEMOORE, ON ROUTE 198 AT 19TH AVENUE	-	N	N/A	No long term impacts anticipated	0.01	0	0	WPCP	E	3/19/2014	3/26/2014	1/26/2015	9/15/2019	
158	06-33221	TUL	99	31.2	32.5		CARTMILL INTERCHANGE LANDSCAPE - LANDSCAPE MITIGATION - IN TULARE COUNTY IN TULARE AT CARTMILL AVENUE OVERCROSSING	-	N	N/A	No long term impacts anticipated	0	0	0	WPCP	E	1/31/2017	4/1/2017	10/3/2017	3/1/2021	
159	06-34235	FRE	180	53.4	56	5	180 West Freeway Landscape - HIGHWAY PLANTING - IN AND NEAR FRESNO FROM 0.2 MILE WEST OF BRAWLEY AVENUE TO 0.2 MILE EAST OF TEILMAN AVENUE	-	N	N/A	No long term impacts anticipated	1.3	1.3	100	WPCP	E	12/20/2013	6/8/2016	12/15/2020	3/1/2024	

Table 6-1: District 6 Anticipated Project Development and Construction Schedule

No.	EA	Project Location					Project Description ^{1,2}	Water Bodies Within or Adjacent to Project Limits ³	Dredge and Fill Activities (Y/N/NA) ⁴	Other Regional Water Board Permits Required ⁵	Potential and Actual Impacts of Project's Discharge ⁶	Disturbed Soil Area (acres)	Area of New Impervious Surface (acres)	Percentage of New Impervious Surface to Existing Impervious Surface	Description of Construction Controls (SWPPP/WPCP/TBD) ⁷	Post-Construction Treatment Control Type, Quantity ⁸	Anticipated Project Delivery Schedule		Construction Period		
		Co.	Route	Begin	End	PA&ED											PS&E	Start	End		
				Begin PM	End PM																
RB ⁹																	Date	Date	Date	Date	
160	06-34253	FRE	180	74.1	78.6	5	KINGS CANYON EXPRESSWAY SEG. 3 - 2C TO 4E ON NEW ALIGNMENT KINGS CANYON EXPRESSWAY- SEGMENT 3 - NEAR CENTERVILLE AND MINKLER, FROM WEST OF SMITH AVENUE TO EAST OF FRANKWOOD AVENUE	China Slough, Kings River, Byrd Slough, Cameron Slough, Collins Creek, C & K Canal	Y	N/A	No long term impacts anticipated	215	51	364	SWPPP	C		4/18/1996	3/4/2014	4/26/2017	10/1/2020
161	06-34256	FRE	180	62.6	66.3	5	180 FREEWAY LANDSCAPE - HIGHWAY PLANTING AND IRRIGATION - IN FRESNO COUNTY IN FRESNO FROM 0.3 MILE WEST OF CLOVIS AVE OC TO 0.8 MILE EAST OF TEMPERANCE AVE	Fancher Creek	N	N/A	No long term impacts anticipated	1.88	0.8	TBD	WPCP	E		8/3/2010	9/1/2011	9/27/2012	5/1/2018
162	06-36024	TUL	99	30.6	35.2	5	PROSPERITY TO CALDWELL- SOUTH SEGMENT - 4F TO 6F - ON ROUTE 99 IN TULARE COUNTY NEAR TULARE FROM PROSPERITY AVE TO 1.2 MILE SOUTH OF AVENUE 280 OC (BR NO. 46-0195)	TBD	N	N/A	TBD	70	35	TBD	SWPPP	E		2/25/2009	1/12/2018	5/1/2019	12/1/2021
163	06-39460	FRE	269	10.4	12.5	5	ROUTE 269 BRIDGE PROJECT - CONSTRUCT NEW BRIDGE & RAISE GRADE "GALE AVE DETOUR" - NEAR HURON ON ROUTE 269 FROM 1.1 MILE NORTH OF PALMER AVENUE TO 0.4 MILES SOUTH OF ROUTE 198	Los Gatos Creek	Y	N/A	No long term impacts anticipated	46	2.04	25	SWPPP	E		8/27/2015	3/1/2017	10/29/2018	7/6/2021
164	06-3HT00	FRE	VAR	VAR	VAR	5	HST - BAKERSFIELD TO FRESNO - HIGH SPEED TRAIN SYSTEM - FROM BAKERSFIELD TO NORTH OF CLINTON AVENUE IN FRESNO AT VARIOUS COUNTIES	-	N	N/A	No long term impacts	TBD	TBD	TBD	TBD	E		5/27/2015	-	-	-
165	06-41601	KIN	41	40.6	41.1	5	BUSH STREET REPLACEMENT PLANTING - LANDSCAPE ARCHITECTURE PLANTING - ON ROUTE 41 IN KINGS COUNTY AT BUSH STREET INTERCHANGE	-	N	N/A	No long term impacts	0	0	0	WPCP	E		2/8/2017	4/1/2017	7/3/2017	2/1/2021

Table 6-1: District 6 Anticipated Project Development and Construction Schedule

No.	EA	Project Location					Project Description ^{1,2}	Water Bodies Within or Adjacent to Project Limits ³	Dredge and Fill Activities (Y/N/NA) ⁴	Other Regional Water Board Permits Required ⁵	Potential and Actual Impacts of Project's Discharge ⁶	Disturbed Soil Area (acres)	Area of New Impervious Surface (acres)	Percentage of New Impervious Surface to Existing Impervious Surface	Description of Construction Controls (SWPPP/WPCP/TBD) ⁷	Post-Construction Treatment Control Type, Quantity ⁸	Anticipated Project Delivery Schedule		Construction Period	
		Co.	Route	Begin	End	PA&ED											PS&E	Start	End	
				Begin PM	End PM															Date
166	06-42371	TUL	198	4.1	5	5	PLAZA LANDSCAPE - REPLACEMENT PLANTING - IN VISALIA, ON ROUTE 198 FROM ROUTE 99 TO PLAZA DRIVE AND ON PLAZA DRIVE FROM AIRPORT DRIVE TO GOSHEN AVENUE	-	N	N/A	No long term impacts	0.85	0	0	WPCP	E	-	7/21/2014	11/13/2014	3/29/2019
167	06-43071	TUL	216	1.9	2.9	5	HOUSTON AVENUE LANDSCAPE - INSTALL LANDSCAPING - IN TULARE COUNTY IN AND NEAR VISALIA FROM LOVERS LANE TO 0.1 MILE EAST OF COMSTOCK STREET.	-	N	N/A	No long term impacts anticipated	0.6	0	0	WPCP	E	-	6/10/2014	7/15/2015	8/1/2020
168	06-43080	TUL	65	29.5	38.3	5	LINDSAY TO EXETER EXPRESSWAY - CONSTRUCT 4-L EXPRESSWAY ALONG AN EXISTING 2-LANE COUNTY ROAD - ON ROUTE 65 IN LINDSAY FROM HERMOSA AVENUE, PM 29.5 TO JUST SOUTH OF AVENUE 300 ON ROUTE 245, PM 0.5	Friant Kern Canal Lewis Creek	Y	N/A	No long term impacts anticipated	235	TBD	TBD	SWPPP	TBD	9/2/2019	3/15/2020	8/15/2021	8/15/2023
169	06-43401	TUL	65	15.1	18	5	TERRABELLA EXPRESSWAY - SEGMENT 1 - WIDEN 2 LANE CONVENTIONAL HIGHWAY TO 4 LANE EXPRESSWAY - ON STATE ROUTE 65 IN TULARE COUNTY FROM AVE 120 TO 0.1 MILE SOUTH OF ROUTE 190/65 SEPARATION	White River, Deer Creek	Y	N/A	No long term impacts anticipated	61.7	27.3	75	SWPPP	E	6/27/2005	7/20/2015	12/23/2016	11/1/2018
170	06-44254	KER	46	30.5	33.5	5	ROUTE 46 CONVENTIONAL HIGHWAY SEGMENT 4A - 2-LN CONVENTIONAL HIGHWAY TO 4-LN CONVENTIONAL HIGHWAY RTE 46 CONVENTIONAL SEGMENT 4A - ON STATE ROUTE 46, FROM THE INTERSECTION OF LOST HILLS ROAD TO 0.9 MILES EAST OF THE INTERSTATE 5 INTERCHANGE	-	N	N/A	No long term impacts anticipated	60	12.6	TBD	SWPPP	E	6/14/2005	6/3/2016	11/1/2017	8/15/2020

Table 6-1: District 6 Anticipated Project Development and Construction Schedule

No.	EA	Project Location					Project Description ^{1,2}	Water Bodies Within or Adjacent to Project Limits ³	Dredge and Fill Activities (Y/N/NA) ⁴	Other Regional Water Board Permits Required ⁵	Potential and Actual Impacts of Project's Discharge ⁶	Disturbed Soil Area (acres)	Area of New Impervious Surface (acres)	Percentage of New Impervious Surface to Existing Impervious Surface	Description of Construction Controls (SWPPP/WPCP/TBD) ⁷	Post-Construction Treatment Control Type, Quantity ⁸	Anticipated Project Delivery Schedule		Construction Period	
		Co.	Route	Begin	End	PA&ED											PS&E	Start	End	
				Begin PM	End PM															
171	06-46150	TUL	190	0	8	5	STATE ROUTE 190 LAIRDS REHAB - AC OVERLAY, SHOULDER WIDENING, LEFT TURN CHANNELIZATION & UTIL RELOCAT - FROM 99/190 SEPARATION TO 0.4 MILE WEST OF ROAD 184	Tule River Irrigation District Culvert	Y	N/A	No long term impacts anticipated	69.6	12.6	45	SWPPP	E	1/2/2014	12/11/2015	7/15/2018	11/1/2020
172	06-46380	FRE	180	36.2	38.7	5	MENDOTA PASSING LANES - ADD PASSING LANES MENDOTA PASSING LANES - ON ROUTE 180, IN FRESNO COUNTY BETWEEN JAMES ROAD AND LAKE AVENUE	Kerman Wildlife Refuge	N	N/A	No long term impacts anticipated	16.5	11	90	SWPPP	E	4/30/2015	10/3/2016	8/14/2017	7/9/2018
173	06-47090	MAD	99	7.5	15.1	5	MADERA 99 WIDENING - 4F TO 6F - IN MADERA COUNTY IN AND NEAR MADERA FROM AVENUE 12 OVERCROSSING TO 1.2 MILES SOUTH OF AVENUE 18 1/2 OVERCROSSING	Cottonwood Creek	N	N/A	No long term impacts anticipated	46	14	21	SWPPP	E	8/14/2015	8/16/2018	9/1/2018	7/1/2020
174	06-47150	TUL	99	39.6	41.3	5	BETTY DRIVE INTERCHANGE - RECONSTRUCT INTERCHANGE BETTY DRIVE INTERCHANGE - ON ROUTE 99 IN TULARE COUNTY IN GOSHEN FROM NORTH OF MILL CREEK DITCH TO NORTH OF NORTH GOSHEN OVERHEAD (BRIDGE NO. 46-55 R/L)	-	N	N/A	No long term impacts anticipated	70	10.4	74	SWPPP	E	6/29/2012	9/1/2015	3/15/2017	10/10/2019
175	06-48450	KER	204	5.9	6.8	5	HAGEMAN FLYOVER - EXTENSION AND CONNECTION TO RTE 204 - ON STATE ROUT (SR) 99 BETWEEN GOLDEN STATE AVENUE (SR 204) AND AIRPORT DRIVE (KP 43.7, 10.2/10.9)	-	N	N/A	No long term impacts anticipated	36	15.6	72	SWPPP	E	5/19/2014	12/15/2017	5/1/2018	10/1/2019
176	06-48460	KER	58	31.7	55.6	5	CENTENNIAL CORRIDOR PROJECT - CONSTRUCT 6/8 LANE FREEWAY - ON ROUTE 58 IN BAKERSFIELD BETWEEN INTERSTATE 5 AND COTTONWOOD ROAD	Kern River Carrier Canal Stine canal Kern Island Canal	Y	N/A	No long term impacts anticipated	1,125	38	27	SWPPP	Existing Infiltration Basins owned by Kern County	2/8/2016	1/15/2018	7/2/2018	1/15/2021

Table 6-1: District 6 Anticipated Project Development and Construction Schedule

No.	EA	Project Location					Project Description ^{1,2}	Water Bodies Within or Adjacent to Project Limits ³	Dredge and Fill Activities (Y/N/NA) ⁴	Other Regional Water Board Permits Required ⁵	Potential and Actual Impacts of Project's Discharge ⁶	Disturbed Soil Area (acres)	Area of New Impervious Surface (acres)	Percentage of New Impervious Surface to Existing Impervious Surface	Description of Construction Controls (SWPPP/WPCP/TBD) ⁷	Post-Construction Treatment Control Type, Quantity ⁸	Anticipated Project Delivery Schedule		Construction Period	
		Co.	Route	Begin	End	PA&ED											PS&E	Start	End	
				Begin PM	End PM															
177	06-48461	KER	58	52.3	55.4	5	BELTWAY OPERATIONAL IMPROVEMENTS - OPERATIONAL IMPROVEMENTS - SR 58 PM 51.8 TO PM R55.6 SR 99 - PM 21.2 TO PM 26.26	Kern River, Carrier Canal, Stine Canal, Kern-Island Canal	N	N/A		37.42	11.5	14	SWPPP	Infiltration Basin	-	4/1/2014	4/17/2015	6/4/2018
178	06-48470	KER	178	0.4	1.9	5	24TH ST.(SR178) WIDENING - WIDEN 24TH ST (SR 178) BY ONE LANE EACH DIRECTION - IN KERN COUNTY IN BAKERSFIELD FROM 0.2 MILE EAST OF KERN RIVER BRIDGE TO 0.2 MILE WEST OF GOLDEN STATE AVENUE UNDERCROSSING	Kern River, Carrier Canal	N	N/A	No long term impacts anticipated	18.82	6.4	TBD	SWPPP	C	2/18/2014	-	-	2/1/2018
179	06-48740	TUL	99	36.1	36.8	5	CALDWELL INTERCHANGE - RECONSTRUCT INTERCHANGE - ON ROUTE 99 IN TULARE COUNTY BETWEEN 0.3 MILE SOUTH OF AVE 280 OC (CALDWELL AVE.) TO 0.4 MILE NORTH OF AVE 280 OC	Evans Ditch	N	N/A	No long term impacts anticipated	16	3.9	125	SWPPP	E	10/16/2018	6/1/2020	6/16/2021	7/1/2024
180	06-48751	KIN	198	16.5	17.2	5	12TH AVE REPLACEMENT PLANTING - REPLACEMENT PLANTING - ON RTE 198 IN HANFORD AT 12TH AVENUE OVERCROSSING	-	N	N/A		0.23	0	-	WPCP	E	10/5/2009	4/22/2016	8/28/2017	3/30/2021
181	06-49390	KER	58/178	0	0.4	5	178 OPERATIONAL IMPROVEMENTS - INTERSECTION IMPROVEMENTS AND WIDENING OF 24TH ST (SR 178) - IN KERN CO IN BAKERSFIELD ON RTE 58 FROM 0.1 MI WEST OF RTE 99 TO RTE 99 ON RTE 178 FROM RTE 99 TO OLIVE ST ON RTE 99 FROM 0.7 MI SOUTH OF RTE 58 TO 0.1 MI NORTH OF RTE 58	Kern River, Carrier Canal	N	N/A	No long term impacts anticipated	5.37	2.64	146	SWPPP	C	2/18/2014	2/1/2017	-	4/6/2018
182	06-4HT00	VAR	VAR	VAR	VAR	5	HST - PALMDALE TO BAKERSFIELD - HIGH SPEED TRAIN SYSTEM - FROM PALMDALE TO BAKERSFIELD AT VARIOUS COUNTIES	TBD	TBD	Y	TBD	TBD	TBD	TBD	TBD	TBD	7/1/2017	TBD	TBD	TBD

Treatment Control Status Legend	
BMP Device Types:	
BIOSTP	Biofiltration Strips
BIOSWL	Biofiltration Swales
C	Under Consideration
CNTBOX	Gross Solids Removal Devices (Inclined Screen)
DETBAS	Detention Basins
DPPIA	Design Pollution Prevention Infiltration Area*
DWFD	Dry Weather Flow Diversion
E	Exempt
INDBAS	Infiltration Basins*
INDTRE	Infiltration Trench*
LNGTBE	Gross Solids Removal Devices (Linear Radial)
MCTT	Multi-Chambered Treatment Trains
MF-ADS	Austin Sand Filters
MF-DSF	Delaware Sand Filters
Other	Other (specify type)
SA	Stabilization Areas
TRCSND	Traction Sand Traps
WETBAS	Wet Basins

* Water quality volume infiltrates within the right of way. (When this is demonstrated for at least 90% of the WQV, other types of treatment BMPs are not considered unless there is a location-specific requirement.)

Table 6-2 lists the planned maintenance projects that will disturb soil.

Table 6-2: District 6 Anticipated Significant Road Maintenance Activities

No.	Co.	Route	Beg PM	End PM	Regional Board	Description	Water Bodies Affected ¹⁰	Other Regional Water Board Permits Required ¹¹	Potential and Actual Impacts of Project's Discharge ¹²	Disturbed Soil Area (acres)	Area of New Impervious Surface (acres)	Percentage of New Impervious Surface to Existing Impervious Surface	Description of Construction Controls (SWPPP/WPCP/TBD/NA) ¹³	Post-Construction Treatment Control Type, Quantity ¹⁴	Start Date	Completion Date
1	MAD	41	25.0	45.7	5	Winter Snow Activities	Lewis Creek, Fresno River, Coarsegold Creek	None	None anticipated	-	-	-	NA	NA	11/01/19	04/30/20
2	MPA	41	0.0	5.0	5	Winter Snow Activities	Lewis Creek	None	None anticipated	-	-	-	NA	NA	11/01/19	04/30/20
3	FRE	168	27.0	67.0	5	Winter Snow Activities	Shaver Lake/Huntington Lake	None	None anticipated	-	-	-	NA	NA	11/01/19	04/30/20
4	FRE	180	99.0	116.0	5	Winter Snow Activities	Sequoia Lake	None	None anticipated	-	-	-	NA	NA	11/01/19	04/30/20
5	TUL	190	37.5	56.5	5	Winter Snow Activities	Tule River	None	None anticipated	-	-	-	NA	NA	11/01/19	04/30/20
6	KERN	155	50	70.9	5	Winter Snow Activities	Lake Isabella/Kern River	None	None anticipated	-	-	-	NA	NA	11/01/19	04/30/20

¹⁰ Receiving waters within or adjacent to maintenance activity designated as “303(d) (constituent type).” Activity adjacent to Drinking Water Reservoir or Ground Water Recharge Facilities designated as “DW.”

¹¹ Regional Water Board Permits required other than Construction General Permit, such as Clean Water Act Section 401 water quality certification, Waiver of Discharge Requirements, Dewatering Permits, Bridge Painting WDRs, etc.

¹² This information may come from the Water Quality Assessment Report prepared for each project, a Water Quality Technical Memorandum, or other document that evaluates the water quality impacts of a project.

¹³ A description of the Construction Controls is available in the project’s Storm Water Pollution Prevention Plan (SWPPP), Water Pollution Control Plan (WPCP), is To Be Determined (TBD) if the Disturbed Soil Area is unavailable, or is Not Applicable (NA) because there is no Disturbed Soil Area associated with the project.

¹⁴ Treatment Control Status identified by: device type/number of devices, exempt (“E”), or under consideration (“C”). See Treatment Control Status Legend below for device type abbreviations.

Treatment Control Status Legend	
BMP Device Types:	
BIOSTP	Biofiltration Strips
BIOSWL	Biofiltration Swales
C	Under Consideration
CNTBOX	Gross Solids Removal Devices (Inclined Screen)
DETBAS	Detention Basins
DPPIA	Design Pollution Prevention Infiltration Area*
DWFD	Dry Weather Flow Diversion
E	Exempt
INDBAS	Infiltration Basins*
INDTRE	Infiltration Trench*
LNGTBE	Gross Solids Removal Devices (Linear Radial)
MCTT	Multi-Chambered Treatment Trains
MF-ADS	Austin Sand Filters
MF-DSF	Delaware Sand Filters
Other	Other (specify type)
SA	Stabilization Areas
TRCSND	Traction Sand Traps
WETBAS	Wet Basins

* Water quality volume infiltrates within the right of way. (When this is demonstrated for at least 90% of the WQV, other types of treatment BMPs are not considered unless there is a location-specific requirement.)

Table 6-3 lists the District's planned monitoring activities.

Table 6-3: District 6 Monitoring Activities

Statewide Monitoring Program Activities
<i>ASBS Core Monitoring Sites</i>
District 6 has no ASBS monitoring sites.
<i>ASBS Ocean Receiving Water and Reference Monitoring Sites</i>
District 6 has no ASBS Receiving Waters within its boundaries.

This page was intentionally left blank.

7 Region-Specific Activities

Section 7 of the DWP identifies the applicable region-specific activities that District 6 has planned for the fiscal year 2019-20 to comply with Attachment V of the Conformed NPDES Permit. Region specific requirements are not applicable to District 6.

This page was intentionally left blank.

8 DWP Noncompliance and Improvements

Section 8 of the DWP identifies the deviations that occurred from the prior DWP that resulted or will result in noncompliance with the Conformed NPDES Permit or SWMP. In addition, it describes the improvements that were performed in response to the incidents of noncompliance. District 6 has no DWP noncompliance incidents or improvements that were identified.

This page was intentionally left blank.