

**California Department of Transportation
Stormwater Management Program
District 8 Work Plan**

Fiscal Year

2019-2020

CTSW-RT-18-379.06.2



California Department of Transportation
Division of Environmental Analysis
Stormwater Management Program
464 W. 4th Street, San Bernardino, California 92401

<http://www.dot.ca.gov/hq/env/stormwater>

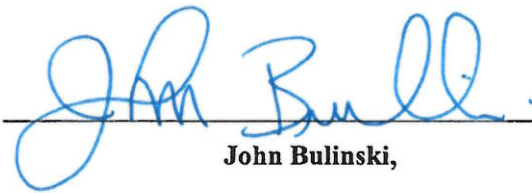
October 1, 2018



For individuals with sensory disabilities, this document is available in alternate formats upon request. Please call or write to the Stormwater Liaison, Caltrans Division of Environmental Analysis, MS-27, P.O. Box 942874, Sacramento, CA 94274-0001, (916) 653-8896 Voice, or dial 711 to use a relay service.

**California Department of Transportation
District 8 Certification
District Work Plan 2019-20**

I certify under penalty of law that this document and all attachments were prepared under my direction or supervision in accordance with a system designed to assure that qualified personnel properly gather and evaluate the information submitted. Based on my inquiry of the person or persons who manage the system, or those persons directly responsible for gathering the information, the information submitted is to the best of my knowledge and belief, true, accurate, and complete. I am aware that there are significant penalties for submitting false information, including the possibility of fine and imprisonment of knowing violations. [40 CFR 122.22(d)]



John Bulinski,

District Director

9/19/18

Date

This page was intentionally left blank.

Table of Contents

1	Introduction	1-1
2	District Personnel and Responsibilities	2-1
3	District Facilities and Water Bodies	3-1
4	Drinking Water Reservoirs and Recharge Facilities.....	4-1
5	Slopes Prone to Erosion	5-1
6	Implementation.....	6-1
7	Region-Specific Activities	7-1
8	DWP Noncompliance and Improvements	8-1

Figures

Figure 2-1: District 8 Organizational Chart	2-9
Figure 5-1: District 8 2018 Areas Prone to Erosion.....	5-3

Tables

Table 2-1: District 8 Stormwater Personnel and Responsibilities	2-5
Table 2-2: District 8 Signatory Authority for Key Documents.....	2-7
Table 4-1: District 8 Drinking Water Reservoirs and Recharge Facilities	4-1
Table 5-1: District 8 Inventory of Road Segments Prone to Erosion.....	5-1
Table 6-1: District 8 Anticipated Project Development and Construction Schedule.....	6-3
Table 6-2: District 8 Anticipated Significant Road Maintenance Activities	6-15
Table 6-3: District 8 Monitoring Activities	6-17
Table 8-1: District 8 Prior DWP Noncompliance Incidents and Improvements.....	8-1

This page was intentionally left blank.

General Information about the District Work Plan

The District Work Plans (DWPs) describe the organization of each California Department of Transportation (Caltrans) District's stormwater program and outline the planned stormwater activities for the upcoming fiscal year. They are prepared and submitted on October 1 each year. Since the DWP is District-specific, each Regional Water Quality Control Board (RWQCB or Regional Board) is provided a copy of the DWPs relevant to their jurisdiction.

This DWP presents information about District 8's water bodies, Best Management Practices (BMPs), and monitoring programs. It describes how the District will specifically implement the requirements of the Statewide Stormwater Management Plan (SWMP) during fiscal year 2019-20. Implementation activities will be conducted in accordance with the procedures presented in the SWMP. In addition, this DWP fulfills Provision E.3.b of the *National Pollutant Discharge Elimination System (NPDES) Statewide Storm Water Permit Waste Discharge Requirements (WDRs) for State of California Department of Transportation* (Order Number 2012-0011-DWQ, NPDES Number CAS000003, Effective July 1, 2013) (NPDES Permit). The NPDES Permit was amended by Orders WQ 2014-0006-EXEC (January 17, 2014), WQ 2014-0077-DWQ (May 20, 2014), and WQ 2015-0036-EXEC (April 7, 2015). A conformed NPDES Permit was issued on April 7, 2015 (Conformed NPDES Permit), available on the California State Water Resources Control Board's (SWRCB) website:

http://www.waterboards.ca.gov/board_decisions/adopted_orders/water_quality/2012/wq2012_0011_dwq_conformed_signed.pdf

The NPDES Permit was further amended by Order WQ 2017-0026-EXEC on November 27, 2017. This permit amendment describes the primary modifications to several Areas of Special Biological Significance (ASBS) sampling locations and incorporation of compliance units crediting due to the SWRCB's adoption of the trash provisions on April 7, 2015 (effective on December 3, 2015).

The DWP's eight sections describe how the District plans to implement the stormwater program during the upcoming fiscal year. Section 1 introduces the DWP, describes its organizational structure, and identifies the key goals and commitments made by the District for the upcoming fiscal year. Section 2 describes the personnel with stormwater operations responsibilities in the District. In Section 3, the District's facilities are listed and categorized by type and location. Section 4 describes and identifies the high-risk locations where spills from the District's owned rights-of-way, roadways or facilities can discharge directly to a drinking water reservoir or ground water recharge facility. In Section 5, the District's road segments that are prone to erosion are identified. Section 6 summarizes the District's implementation activities, including projects that will be in the design and construction phases during the fiscal year, maintenance projects, and planned stormwater monitoring activities. Section 7 identifies the planned region-specific activities (if applicable) to address the requirements listed in Attachment V of the Conformed NPDES Permit. Section 8 identifies deviations that occurred from the prior DWP that resulted or will result in noncompliance with the Conformed NPDES Permit or SWMP and describes improvements performed in response to the incidents of noncompliance.

District Goals and Commitments

The District 8 stormwater (SW) quality program will implement the following:

- **NPDES OSWQ (A. Habib):** The District will continue to implement the July 2016 Stormwater Management Program. The NPDES OSWQ will continue to improve municipal coordination.
- **SW Design & Hydraulics (A. Bisi):** The SW Design & Hydraulics unit will continue to promote and implement Low Impact Development principles in highway and drainage design, through

participation on Project Development Teams and reviews. The SW Design will assist the District NPDES Coordinator in implementation of the State Highway Operation Protection Plan (SHOPP 201.335) program and achieving Compliance Units required by the Caltrans 2012 NPDES MS4 Permit. The SW Design unit will continue to train Project Engineers who prepare Stormwater Data Reports.

- **NPDES Construction (D. Meress):** The Construction Division will participate on Project Development Teams and Constructability Reviews to get quality biddable and buildable projects. Construction will continue training and assisting Resident Engineers (REs) and other field staff in field implementation and Statewide Construction General Permit (CGP) requirements to attain Department goals. Construction will continue to assist RE's and field staff in completing projects that are compliant throughout the length of the project, will continue to manage the Stormwater Portal, and coordinate with the Regional Water Quality Control Boards so the District can continue to deliver compliant projects.
- **NPDES Maintenance (L. Estrella):** The Maintenance Division will continue to review projects under development and inspect them at the 90% walkthrough to ensure treatment BMPs are accessible and maintainable in the long term.
- **NPDES Permit (T. Nguyen):** The Encroachment Permits Division will implement the Encroachment Permits Manual, chapter 400, Section 406. Each encroachment permit application will be reviewed for potential stormwater impacts, and stormwater controls will be implemented by a tiered system. Projects requiring coverage under the CGP must show evidence of coverage prior to issuance of the encroachment permit.

2 District Personnel and Responsibilities

Section 2 of the DWP describes positions, addresses, and telephone numbers of personnel with responsibilities for stormwater operations within the District. This section also identifies positions having signatory authority for various notifications or documents required for submittal by a District (e.g., Project Registration Documents, including Notices of Intents or NOIs).

District NPDES Stormwater Coordinator

The District NPDES Coordinator (DNC) oversees the stormwater quality program and is responsible for implementing an effective program in the District. In addition, the DNC is a liaison between Headquarters (HQ) and District Division Chiefs (DDC) to ensure the effective communication, collaboration, and coordination of stormwater activities. The DNC also provides support, direction, and guidance to the other Stormwater Coordinators.

The DNC is responsible for informing each Division of statewide stormwater quality policies and guidance in District 8 and daily management of the District's stormwater quality program. The DNC is responsible for identifying issues, developing recommendations related to stormwater quality, and coordinating with the HQ Division of Environmental Analysis concerning water quality issues that affect the District. The DNC supervises staff who support the DNC with the Stormwater Management Program.

The responsibilities of the DNC include:

- Providing guidance and direction for the preparation, development, and implementation of a comprehensive District Stormwater Management Program, as directed in the DWP.
- Serving as the signatory authority in the District for Storm Water Data Reports (SWDRs) produced in each phase of project development.
- Evaluating needs and making recommendations for the stormwater workload allocations for the District 8 Office of Stormwater Quality (OSWQ) for each fiscal year.
- Coordinating and tracking resource distributions, workloads, and projects within the OSWQ.
- Providing guidance and direction necessary to develop strategies for addressing regulations and mandates on stormwater discharges set forth by federal, state, and local regulatory agencies.
- Representing the District as the primary liaison on stormwater and waste discharge issues with Headquarters, local MS4 co-permittees, the four RWQCBs in the District, the U.S. Environmental Protection Agency (U.S. EPA), and the SWRCB.
- Representing the District on the Water Quality Stormwater Advisory Team (WQSWAT) identified in the SWMP.
- Leader and Chairperson of the District 8 NPDES Task Force and State Highway Operation Protection Plan (SHOPP 201.335) program.
- Providing District input on research proposals and implementation, development of training classes, and other work initiated by Headquarters.
- Initiating, directing, and overseeing stormwater TMDL task order or contract in the District.

Although the Chief of the OSWQ in the Division of Engineering Services has been designated as the District NPDES Coordinator, the stormwater responsibilities are in addition to and separate from the responsibilities of the OSWQ.

Environmental Engineering Coordinator

The District Environmental Engineering Coordinator (EEC) is responsible for communicating with the DDC of Environmental Planning and the Environmental Engineering Office Chief for the proper implementation of the environmental engineering portion of the SWMP and DWP. The EEC ensures that the staff supports and properly executes the activities defined in the SWMP and DWP. The specific stormwater tasks for which the EEC is responsible is the following:

- Determination and evaluation of stormwater impacts during California Environmental Quality Act and/or National Environmental Policy Act (CEQA/NEPA) screening for hazardous wastes.
- Provide information to the DNC regarding projects that invoke the DTSC Lead variance for soils containing aerially deposited lead.

Maintenance Coordinator

The Maintenance Coordinator (MC) is a Maintenance Superintendent responsible for communicating with the Deputy District Director of Maintenance and the Maintenance Supervisors regarding the proper implementation of maintenance-related sections of the SWMP and DWP. The MC reports all Illegal Connection/Illicit Discharge (IC/ID) activities to the DNC and coordinates stormwater training for maintenance staff as well as overseeing inspections of maintenance facilities and operations relative to Caltrans NPDES Permit compliance. The MC is chairperson of the Maintenance Operation Team that meets routinely to discuss water quality issues, update the Maintenance portion of the DWP, and compile information for the Annual Reports, as well as the SWMP. The MC serves as the conduit for information between the DNC and maintenance offices, as well as the Headquarters Maintenance Program, including the Maintenance SWAT identified in the SWMP.

Construction Coordinator

The Construction Coordinator (CC) is a senior-level employee responsible for developing stormwater quality guidance and for the daily management of the Division of Construction's stormwater quality program. The CC is responsible for providing guidance to the Resident Engineer, in an advisory capacity, regarding the proper implementation of the SWMP and the District Work Plan within its Division. The CC is also the functional manager of the Construction NPDES/Environmental unit. This unit oversees implementation of CT's Construction NPDES program requirements in the field during the construction phase of each project and reviews projects in the Plans, Specifications, and Estimates (PS&E) phase to ensure adequate temporary BMPs have been included and to assist the RE with Notice of Termination (NOT) which is part of the project close out. The specific tasks for which the CC is responsible include:

- Serving as the primary point of contact for stormwater issues during the construction phase of each project.
- Developing and administering stormwater training for construction staff.
- Reviewing and recommending approval of Stormwater Pollution Prevention Plans (SWPPP) and Water Pollution Control Plans (WPCP) as requested by the Resident Engineer.
- Tracking critical compliance milestones that occur before and during the course of construction.
- Conducting final project closeout inspections.
- Reviewing the Notice of Termination for SWPPP projects.
- Submitting approved SWPPPs to the RWQCBs as requested.
- Submitting reports to the RWQCBs as requested.

- Providing oversight inspections for highway projects administered by entities outside Caltrans.
- Reviewing, preparing, and submitting Threat of Discharge reports
- Preparing and submitting IC/ID Reports for Construction.
- Representing Construction in the District's NPDES Task Force Meetings.
- Providing input to the Annual Report.
- Participating on the Construction SWAT described in the SWMP.
- Accompanying RWQCB in joint reviews as requested by the water Board during the construction
- Accompanying headquarters' staff in unannounced IQA reviews.
- Conducting projects monthly IQA reviews.
- Ensuring that every job receives a monthly IQA review
- Updating the Stormwater Portal
- Reviewing project documents during all phases of project development and providing input to the designer in determining specific project needs for temporary water pollution control during construction.

The CC ensures that all enforcement actions or corrections requested by the regional boards are promptly implemented and documented. The CC serves as the primary conduit for information during the construction phase for the RWQCBs, Headquarters Construction, and construction field staff. The CC supports the design-related functional units.

Right-of-Way (ROW) Coordinator

The Right-of-Way (ROW) Coordinator for the NPDES Task Force is currently a District Branch Chief of Property Management. This Coordinator is responsible for:

- Ensuring that stormwater training is available to ROW agents tasked with property inspection responsibilities.
- Ensuring that regular property inspections include stormwater inspections.
- Maintaining documentation of the inspection findings and corrective actions.
- Disseminating information and answering questions regarding Caltrans' stormwater policy to all ROW staff involved in stormwater inspections.
- Notifying the NPDES Task Force and/or the DNC of discharges or situations that appear to be in violation of Caltrans NPDES Permit, SWMP, or DWP.
- Reporting instances where ROW conducts construction activities that require the development of a SWPPP and related notification.

Engineering Services (Stormwater Design/Hydraulics) Representative

The Stormwater Design Coordinator (DC) is a licensed Civil Engineer. The DC is a member of the District NPDES Task Force responsible for providing information on permanent erosion control measures in waterways within the ROW, whether natural or man-made, except those structures assigned with a State Bridge Number, in which case erosion, scour, and related calculations are performed by Headquarter Hydraulics Structures. The SW Design Coordinator is also responsible for Rapid Stability Assessments (RSA) and Hydromodification Analysis and Mitigation. The DC ensures that the

management and staff of the Stormwater Design/Hydraulics Branch are knowledgeable of the DWP and various water pollution control efforts and commitments for minimizing or preventing pollutants from being present in discharges. The DC ensures that the design processes utilized by the Stormwater Design/Hydraulics Branch are consistent with the DWP and the SWMP, especially those processes related to the evaluation, selection, and design of permanent control and treatment control measures.

Public Affairs Coordinator

The Public Affairs Coordinator is a member of the NPDES Task Force, which is responsible for maintaining an effective public information program as specified in this DWP and any elements of the SWMP that are attributed to the District. The Public Affairs Coordinator is directly responsible for the following:

- Ensuring the publication of stormwater articles within District publications (e.g., newsletters and public information flyers).
- Ensuring that stormwater information is available at public events where Caltrans participates in public outreach, such as county fairs and environmental awareness events.

Encroachment Permits Coordinator

The Encroachment Permits Stormwater Coordinator is a member of the NPDES Task Force, which is responsible for ensuring that the District Office of Encroachment Permits complies with the Caltrans NPDES Permit, SWMP, and DWP. The Office of Encroachment Permits is responsible for issuing encroachment permits to local agencies, utility companies, and others (i.e., film production companies, marathon sponsors, etc.) requesting an encroachment into Caltrans' ROW for conducting construction, maintenance, or other activities consistent with their organization. The Encroachment Permits Stormwater Coordinator ensures that all encroachment permits issued to those encroaching onto Caltrans' ROW comply with the Caltrans NPDES Permit in a manner that is consistent with what is required of Maintenance, Construction, and Design.

Landscape Architecture Coordinator

The Landscape Architecture units facilitate the incorporation of permanent erosion control measures into the planning, design, and construction of all projects in District 8. The District Landscape Architect or her delegate is the Landscape Architecture Coordinator (LAC), who is the primary point of contact between the other functional units, the NPDES Task Force, and the DNC. The LAC provides permanent erosion and sediment control training to Design personnel in coordination with the HQ Landscape Architecture Program (LAP), the HQ Department of Environmental Analysis, and the DNC. Furthermore, the LAC provides field support to Construction, Maintenance, and Encroachment Permits when requested. The LAC also coordinates SWMP and DWP implementation with local agencies that sponsor projects on the U.S., State, and Interstate highway systems.

The specific stormwater tasks for which the LAC is responsible include the following:

- Evaluating and recommending permanent soil stabilization control and treatment control measures for addressing project stormwater impacts.
- Identifying the costs related to water pollution and erosion control on programming documents.
- Developing new specifications, details, and guidance materials related to erosion and sediment control.
- Preparing contracts at PS&E to address erosion and sediment controls for projects, including computational proof of post-construction soil stabilization per the CGP.

- Ensuring that when soil containing lead is reused in accordance with variances issued by the Department of Toxic Substances Control (DTSC), that it is stabilized as part of project design.
- Assisting the District Encroachment Permits Branch in evaluating water quality impacts and the requirements of encroachment permit applications as requested.
- Assisting the DNC and MC in identifying, scoping, and programming stormwater quality-related projects for the State Highway Operation and Protection Program.
- Assisting in the development of training programs, especially those for Landscape Architecture staff.
- Reviewing and approving erosion control plans for oversight projects.
- Participating in the Planning and Design Stormwater Advisory Team (PDSWAT) identified in the SWMP.

The LAC is a liaison with the LAP to develop, submit, review, and approve all specifications and details related to post-construction erosion and sediment control and vegetated treatment controls. Furthermore, the LAC is the contact for Headquarters' Design Program in the approval or concurrence with specifications related to erosion and sediment control.

Table 2-1 lists staff members responsible for implementing the Stormwater Program.

Table 2-1: District 8 Stormwater Personnel and Responsibilities

Staff Name	Title	Phone No.	E-mail	Responsibility
Aysha Habib	District NPDES Stormwater Coordinator, Chief-Office of Stormwater Quality	(909) 806-2551	aysha.habib@dot.ca.gov	Primary contact for all stormwater issues. Oversees the implementation of the Caltrans NPDES Permit within the District. Final signatory authority on all Stormwater Data Reports. District representative on the WQSWAT.
Osabuogbe (Chris) Igbinedion	Environmental Water Quality Specialist	(909) 888-2029	osabuogbe.igbinedion@dot.ca.gov	Primary contact for all non-storm water quality issues.
Laleh Modrek & Hoang B. Pham	Hazardous Waste Coordinator	(909) 388-7146 (909) 383-6764	laleh.modrek@dot.ca.gov hoang.b.pham@dot.ca.gov	Primary contact for DTSC related stormwater issues.
Leonard Estrella	Maintenance Stormwater Coordinator	(909) 889-3235	leonard.estrella@dot.ca.gov	Implementation of the policies, procedures, personnel and equipment of the SWMP in the Maintenance Division. District representative on the MSWAT. Third signatory on the long form SWDR

Staff Name	Title	Phone No.	E-mail	Responsibility
Dave Meress	Construction Stormwater Coordinator	(909) 514-1071	dave.meress@dot.ca.gov	Ensures that field construction personnel are appropriately trained to ensure compliance with water pollution control requirements. Conducts inspections to assist Resident Engineers in ensuring that stormwater controls are implemented. Reviews SWPPPs. District representative on the Construction Stormwater Advisory Team (CSWAT).
Michael Yarbrough	Right-of-Way Coordinator	(909) 383-4581	michael.yarbrough@dot.ca.gov	Primary contact for Right-of-Way related stormwater issues.
Alan Bisi	Engineering Services (SW Design/Hydraulics) Coordinator	(909) 383-4624	alan.bisi@dot.ca.gov	Primary contact for drainage-related stormwater issues.
Dawn Strough	Public Affairs Coordinator	(909) 383-4416	dawn.strough@dot.ca.gov	Coordinates with the DNC for public outreach and education at public events.
Tan Nguyen	Encroachment Permits Stormwater Coordinator	(909) 383-7544	tan.d.nguyen@dot.ca.gov	Primary contact for Encroachment Permits-related stormwater issues.
Rose Bishop	Landscape Architecture Coordinator	(909) 383-6414	rose.bishop@dot.ca.gov	Implements post-construction erosion and sediment control for Caltrans projects; oversees the same on projects administered by local agencies. Fourth signatory on the long-form SWDR.
Hortensia Irigoyen	Planning Stormwater Coordinator	(909) 383-5905	hortensia.irigoyen@dot.ca.gov	Assists the DNC in Transportation Planning-related stormwater issues.
Wale Alofe	Project Management Stormwater Coordinator	(909) 381-1773	wale.alofe@dot.ca.gov	Assists the DNC in Project Management-related stormwater issues.

Table 2-2 lists individuals authorized to sign the documents, reports, and other information submitted by the District to either the SWRCB or the RWQCB(s). These individuals/positions may delegate authorization to their staff to sign various documents and reports required for implementation of the Stormwater Program. It also includes delegation of signatory authority for key Conformed NPDES Permit and SWMP required documents.

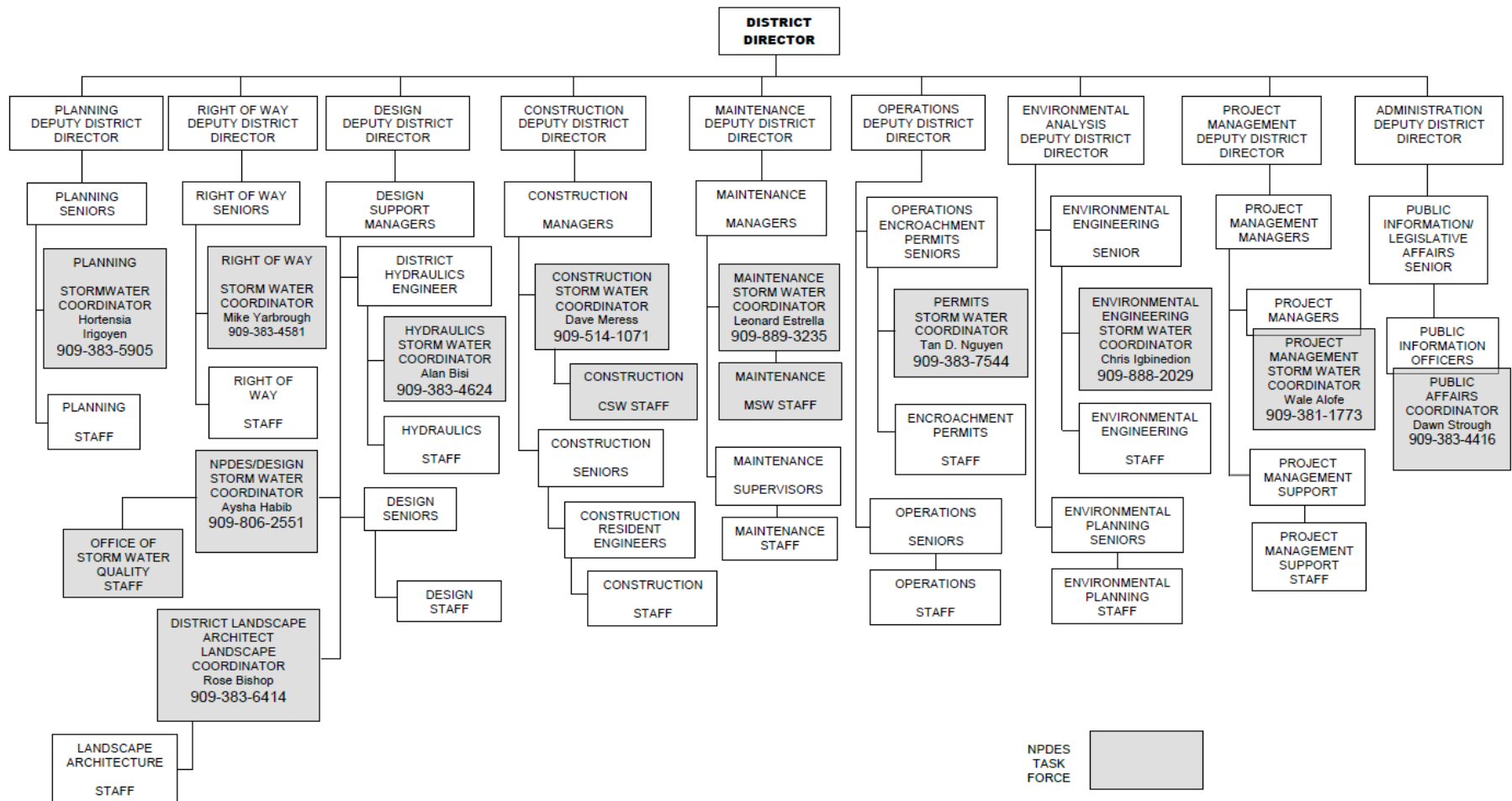
Table 2-2: District 8 Signatory Authority for Key Documents

Position or Individual	Phone No.	E-mail	Documents Authorized for Signatures
John C. Bulinski	(909) 383-4055	john.bulinski@dot.ca.gov	All District Documents
Aysha Habib District NPDES Stormwater Coordinator	(909) 806-2551	aysha.habib@dot.ca.gov	All District Documents except District Work Plan
Project Engineer	-	-	All District Documents except District Work Plan
Dave Meress Construction Stormwater Coordinator	(909) 514-1071	dave.merss@dot.ca.gov	SWPPP, Notice of Intent (NOI), Notice of Termination (NOT), Notice and Non-Compliance Reporting, Discharge or threat of Discharge Notification, Incident Report Form
Leonard Estrella Maintenance Stormwater Coordinator	(909) 889-3235	leonard.estrella@dot.ca.gov	Notice and Non-Compliance Reporting, Discharge or Threat of Discharge Notification, Report of Illegal Connection/Illicit Discharge (IC/ID), Incident Report Form
Tan Nguyen Permits Coordinator, Permit Inspector	(909) 383-7544	tan.d.nguyen@dot.ca.gov	SWPPPs, NOI/NOT, Notice and Non-Compliance Reporting, Discharge or Threat of Discharge Notification, and Report of IC/ID, Incident Report Form
Design Senior Engineer	-	-	Notice of Soil Reuse with Aerially Deposited Lead (ADL)
Resident Engineer	-	-	SWPPPs, Notice and Non-Compliance Reporting, Discharge or Threat of Discharge Notification, NOI/NOT, Incident Report Form
Resident Engineer	-	-	SWPPPs, NOI/NOT, Notice and Non-Compliance Reporting, Discharge or Threat of Discharge Notification, and Report of IC/ID, Incident Report Form
Leonard Estrella Maintenance Stormwater Coordinator	(909) 889-3235	leonard.estrella@dot.ca.gov	Facility Pollution Prevention Plans (FPPP)

Figure 2-1 shows an organizational chart describing key persons with responsibilities for stormwater operations within the District.

This page was intentionally left blank.

Figure 2-1: District 8 Organizational Chart



This page was intentionally left blank.

3 District Facilities and Water Bodies

Section 3 of the DWP identifies maintenance stations (including crew functions and street addresses), vista points, commercial vehicle enforcement areas, roadside rest areas, park and ride facilities, toll road and bridge plazas, equipment shops, and other Caltrans facilities. Facility Pollution Prevention Plans (FPPPs) are prepared and implemented at Maintenance facilities within the District's boundaries, such as maintenance stations, material storage facilities, and equipment shops. To comply with Department of Homeland Security policy, the table and map identifying these facilities is not available to the public. For more information, contact Caltrans' Office of Emergency Management or Division of Environmental Analysis.

This page was intentionally left blank.

4 Drinking Water Reservoirs and Recharge Facilities

Section 4 of the DWP describes and identifies the high-risk areas, which are locations where spills or other releases from District-owned rights-of-way, roadways, or facilities may discharge directly to municipal or domestic water supply reservoirs or ground water percolation facilities. Projects that potentially drain to these high-risk areas consider project features that enhance spill response.

Drinking water reservoirs and recharge facilities are areas such as locations where spills from District-owned ROWs or facilities can discharge directly to municipal or domestic water supply reservoirs or ground water percolation facilities. To generate the list of municipal, domestic water supply reservoirs, and ground water percolation facilities, the District first contacted known public and private water supply providers. From the information received, the District determined which facilities were susceptible to a direct spill from a District activity or facility. This determination was based on proximity between the water body and the District's facility, use characteristics of the facility, and the probable spill response time.

When planning projects within these defined areas, District 8 considers project design features for aiding in the prevention of accidental spills that could impact the area; these features are typically commensurate with safety improvements for reducing vehicle accidents. Examples of these features may include, but are not limited to, median barrier, guardrail, signalization, and vehicle restrictions. Features considered for improving spill response time typically include elongated drainage paths, call boxes, signage, or video surveillance.

A list of drinking water reservoirs and recharge facilities within District 8 is presented in Table 4-1.

Table 4-1: District 8 Drinking Water Reservoirs and Recharge Facilities

Road Segment/ Facility	County	Regional Board	Drinking Water Reservoir or Recharge Facility Area	Description	Comments
SR 173, PM 17.8-21.5 SR 189, PM 3.5-5.5	SBd	6	Lake Arrowhead	Created in 1922, this lake is used for multiple purposes including water supply to a local community. The Lake Arrowhead Community Service District (LACSD) withdraws water from the lake for treatment and distribution to the Arrowhead Woods community for potable use.	LACSD emergency contact (909) 336-7100
SR 138, PM 24.9-32.4	SBd	6	Silverwood Lake	This lake was created in 1971 by the construction of a forebay (Cedar Springs Dam) on the California Aqueduct. The Crestline-Lake Arrowhead Water Agency (CLAWA) draws and treats lake water for a supplemental water supply to a portion of the San Bernardino Mountains.	CLAWA emergency contact (909) 338-1779
SR 395, PM 6.0-6.8	SBd	6	California Aqueduct	Part of the State Water Project (SWP), this aqueduct brings water from the San Joaquin-Sacramento River Delta to southern California. The east branch of the aqueduct ends at Silverwood Lake. Water conveyed by the east branch is used for multiple purposes including agricultural and domestic supplies.	SWP emergency contact (916) 574-2714
I-10 PM 4.8	SBd	8	Eighth Street Basin #3	This small basin is owned by San Bernardino County Flood Control District (SBCFCD). The basin receives water from a series of basins leading from Cucamonga Canyon and is listed as a flood control/ percolation basin.	SBCFCD emergency contact (909) 387-8063

Road Segment/ Facility	County	Regional Board	Drinking Water Reservoir or Recharge Facility Area	Description	Comments
I-15 PM 0.5-0.75	SBd	8	Wineville Basin	This basin is owned by SBCFCD. The basin receives water from Day Creek and the Etiwanda Channel. It is used for flood control and groundwater recharge. The Chino Basin Watermaster (CBWM) was authorized under SWRCB Permit 19895 to recharge groundwater at this facility. The groundwater recharge was meant for irrigation, industrial and municipal uses.	SBCFCD emergency contact (909) 387-8063 CBWM emergency contact (909) 484-3888
I-15, PM 7.5	SBd	8	Victoria Basin	This basin is owned by SBCFCD. It receives water from East Etiwanda Creek and Etiwanda Channel, and is listed as a percolation basin.	SBCFCD emergency contact (909) 387-8063
I-15 PM 8.3-9.5	SBd	8	San Sevaine Basins 1-5	These basins are currently owned by SBDFCD but have potential to become percolation basins as proposed by Inland Empire Utilities Agency.	SBCFCD emergency contact (909) 387-8063
I-10	SBd	8	Montclair Basin - 4	Montclair Basin -4 is a stormwater recharge facility which receives runoff from local streets and I-10. It is operated and maintained by Chino Basin Water Conservation District (CBWCD)	CBWCD emergency contact (909) 626-2711

5 Slopes Prone to Erosion

Section 5 of the DWP identifies the road segments within District 8 that have slopes which are prone to erosion and sediment discharge. The road segments that are located in sensitive watersheds, or where there is an existing or potential threat to water quality, will be prioritized for implementing appropriate controls to the maximum extent practicable. In each Annual Report, the status of stabilization activities where applicable will be reported. Table 5-1 is District 8's inventory of vulnerable road segments where erosion occurs and stabilization may be required, or where rock cut slopes are located and rock falls have occurred.

Table 5-1: District 8 Inventory of Road Segments Prone to Erosion

Road Segment	County	Regional Board	Watershed	Scheduled Stabilization Date
Route 60	RIV	8	San Jacinto River	TBD
Route 74	RIV	8	Lake Elsinore	TBD
Route 74	RIV	8	Strawberry Creek	TBD
Route 74	RIV	7/8	Palm Canyon Wash/ Omstott Creek/ San Jacinto River	TBD
Route 74	RIV	7	Horsethief Creek	TBD
Route 74	RIV	7	Carrizo Creek	TBD
Route 243	RIV	8	Upper San Jacinto River	TBD
Route 243	RIV	8	Upper San Jacinto River	TBD
Route 18	SBD	8	East Twin Creek	TBD
Route 18	SBD	8	Strawberry Creek	TBD
Route 18	SBD	6/8	Mojave River/ Santa Ana River	TBD
Route 18	SBD	7/8	Lucerne Lake/ Santa Ana River	TBD
Route 38	SBD	8	Santa Ana River	TBD
Route 95	SBD	7	Colorado River	TBD
Route 95	SBD	7	Colorado River	TBD
Route 138	SBD	6	Silverwood Lake	TBD
Route 138	SBD	6	Silverwood Lake	TBD
Route 138	SBD	6	Silverwood Lake	TBD
Route 247	SBD	7	Emerson/Johnson Valley	TBD
Route 62	SBD	7	Coyote Lake/Mesquite Lake/ Dale Lake	TBD

Figure 5-1 is a map showing California State Highway System areas that required maintenance within District 8 in 2018, including rock cut slopes, landslides, and moderate soil erosion.

This page was intentionally left blank.

District 8

California State Highway System 2018 Areas Prone to Erosion

Areas Prone to Erosion

County	Route	PM1	PM2
RIV	10	30	44.101
RIV	60	23.574	24.184
RIV	62	0	9
RIV	71	2.573	2.573
RIV	74	0	2.9
RIV	74	11	11.5
RIV	74	49.5	92.26
RIV	79	2.2	5.8
RIV	243	2.8	27.5
RIV	371	58	76.79
SBD	15	25.9	25.9
SBD	18	11.2	70.7
SBD	38	14.519	59.27
SBD	95	37	80.4
SBD	138	18.2	37.7
SBD	173	1.1	1.15
SBD	189	2.15	2.15
SBD	215	3.5	4.03
SBD	247	0	12
SBD	330	30	44
RIV	62	0	7.43
SBD	62	7	65

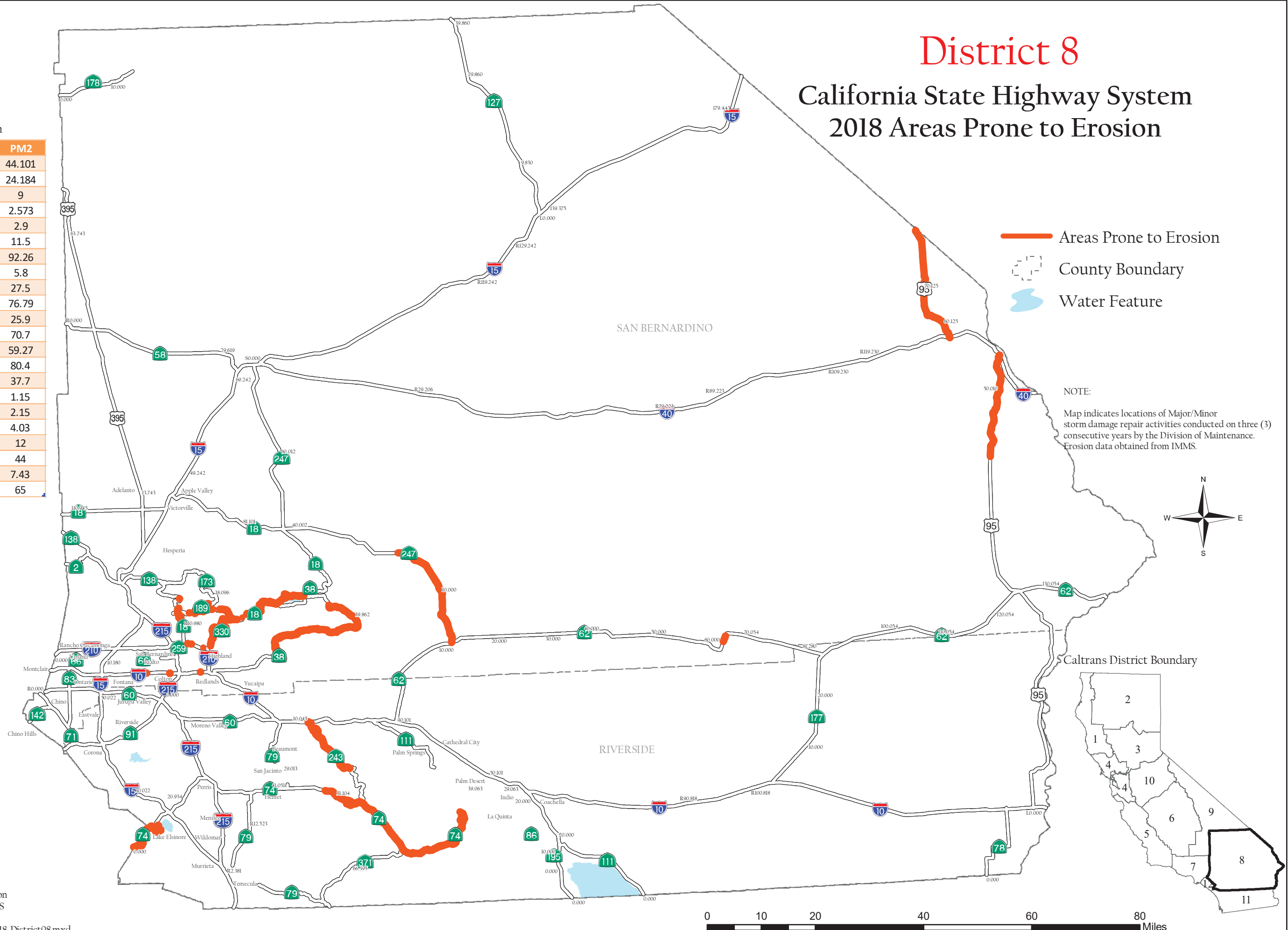


Figure 5-1



State of California
Department of Transportation
Division of Maintenance GIS
July 19, 2018

This page was intentionally left blank.

6 Implementation

Section 6 of the DWP identifies the specific projects in which work is planned during the fiscal year within the Project Approval/Environmental Document (PA/ED), Plans, Specifications, and Estimates (PS&E), and Construction development phases. The anticipated schedule of construction and maintenance projects is subject to change. These projects are limited to those meeting any of the following criteria:

1. All projects that require soil disturbing activities
2. Adjacent to a Drinking Water or Ground Water Recharge Facility, as described in Section 4 of the DWP
3. A supplemental environmental project
4. Additional projects per agreement between the District and local RWQCB

Projects listed in Table 6-1 include (where applicable):

1. Location (county, route and post mile limits)
2. Project number (expense authorization)
3. Basic Project Description
4. Disturbed soil area
5. Presence of receiving waters within or adjacent to project limits, with special designation for 303(d) listed water bodies (adopted)
6. Drinking Water Reservoir or Ground Water Recharge Facility within or adjacent to project (as identified in Section 4 of the DWP)
7. Projected milestone dates of PA/ED, PS&E, begin Construction, and end Construction
8. Description of Construction Controls
9. Post-Construction Treatment Controls (types and quantities)
10. Dredge and fill (CWA-401) activities within the project
11. Other Regional Water Control Board Permits Required
12. Potential and Actual Impacts of Project's Discharge
13. Area of New Impervious Surface
14. Percentage of New Impervious Surface to Existing Impervious Surface

The updated lists of projects meeting these criteria will also be provided to the RWQCB annually on October 1st. Furthermore, this section identifies planned maintenance projects with soil disturbance. Information associated with the project includes location, affected water body, and area of disturbance. In addition, this section also describes the planned stormwater monitoring activities within the District; however, these activities may be conducted jointly with other Districts and HQ. Consequently, the information contained in a DWP may be repeated in another DWP.

This page was intentionally left blank.

Table 6-1: District 8 Anticipated Project Development and Construction Schedule

No.	EA	Project Location					Project Description ^{2,3}	Water Bodies Within or Adjacent to Project Limits ⁴	Dredge and Fill Activities (Y/N/NA) ⁵	Other Regional Water Board Permits Required ⁶	Potential and Actual Impacts of Project's Discharge ⁷	Disturbed Soil Area (acres)	Area of New Impervious Surface (acres)	Percentage of New Impervious Surface to Existing Impervious Surface	Description of Construction Controls (SWPPP/WPCP/TBD) ⁸	Post-Construction Treatment Control Type, Quantity ⁹	Anticipated Project Delivery Schedule		Construction Period	
		Co.	Route	Begin PM	End PM	RB ¹											PA&ED Date	PS&E Date	Start Date	End Date
1	0A020	RIV	215	14.8	16.2	8	RECONSTRUCT INTERCHANGE	Salt Creek	N	N	Minimized	47.2	16.37	59.1	SWPPP	INDBAS	5/2/2011	12/14/2017	9/20/2018	9/18/2020
2	0A440	RIV	015	18.5	21	8	NB HOOK RAMP TO GRAPE ST (PHASE 1) & NEW IC AT FRANKLIN ST (PHASE 2) (THROUGH PA&ED ONLY)	Lake Elsinore	N	N	Minimized	41.5	32.2	36	SWPPP	INDBAS BIOSWL BIOSTP	8/25/2017	6/21/2018	12/17/2018	6/5/2020
3	0C870	SBD	060	2.08	2.59	8	WIDEN ON RAMPS & CENTRAL AVE	Cucamonga Creek	N	N	Minimized	13.2	2.2	12.3	SWPPP	BIOSWL	1/26/2018	10/1/2019	7/1/2020	7/1/2022
4	0C970	RIV	086S	19.3	21.4	7	CONSTRUCT NEW IC AT AVE 50 & BRIDGE OVER COACHELLA CHANNEL	NA	NA	NA	NA	NA	NA	NA	NA	NA	12/14/2018	8/28/2020	2/25/2021	2/24/2023
5	0E150	RIV	015	46.7	49.7	8	PARTIAL CLOVERLEAF INTERCHANGE	Santa Ana River Reach 3	NA	NA	NA	31	18	NA	SWPPP	C	3/4/2016	3/1/2018	8/23/2018	1/21/2020
6	0E150	RIV	015	46.7	49.7	8	PARTIAL CLOVERLEAF INTERCHANGE	Santa Ana River Reach 3	Y	Y	Minimized	61.4	7.1	26.4	SWPPP	INDBAS	3/4/2016	3/1/2018	8/23/2018	1/21/2020
7	0E33U	SBD	060	7.3	10	7	ADD WB AUX LANE, ADD EB DECELERATION LANE, WIDEN I-15 S-W CONNECTOR, WIDEN RAMPS & BRIDGES	NA	NA	NA	NA	NA	NA	NA	NA	NA	12/3/2018	5/15/2020	3/1/2021	6/1/2022
8	0E420	SBD	215	11.3	12	8	RECONFIGURE EXISTING IC & RAMP	Devil Canyon Rd. Storm Drain	N	N	Minimized	6	2	11	SWPPP	C	11/12/2019	6/30/2020	10/15/2020	3/1/2021
9	0F030	SBD	060	0.7	3	8	REMOVE & REPLACE OC STRUCTURES	Unnamed	N	N	Minimized	1.18	0.26	1	WPCP	E	2/17/2017	6/22/2018	3/1/2019	4/1/2021
10	0F120	RIV	010	44.8	46.6	7	CONSTRUCT NEW I/C AT PORTOLA AVENUE	Mid-Valley Stormwater Channel	N	N	Minimized	46.5	37.5	100	SWPPP	INDBAS	4/20/2018	9/13/2019	12/23/2019	1/14/2022
11	0F310	RIV	015	20.8	23.7	8	MODIFY INTERCHANGE AT I-15/SR-74	NA	NA	NA	NA	NA	NA	NA	NA	NA	3/30/2020	7/14/2021	1/14/2022	1/16/2024
12	0F540	RIV	091	0	11.55	8	CONST 1 MF LN & 2 TEL (TOLL EXPRESS LN) EACH DIRECTION ON RTE 91 & CONST 1 TEL EACH DIRECTION ON RTE 15 (DESIGN/BUILD)	Santa Ana River Reach 2 & 3, Wardlow Wash, Temescal Cr Reach 1	Y	Y	Minimized	321	100	NA	SWPPP	C	8/10/2012	7/26/2012	5/9/2013	10/1/2020
13	0F540	RIV	091	0	11.55	8	CONST 1 MF LN & 2 TEL (TOLL EXPRESS LN) EACH DIRECTION ON RTE 91 & CONST 1 TEL EACH DIRECTION ON RTE 15 (DESIGN/BUILD)	Santa Ana River, Reach 2 & 3	Y	Y	Minimized	244.5	75.3	16.2	SWPPP	DPPIA	8/10/2012	7/26/2012	5/9/2013	10/1/2020
14	0F541	RIV	091	0.6	2.6	8	CONSTRUCT EB SR-91 TO NB SR-71 CONNECTOR, COLLECTOR-DISTRIBUTOR SYSTEM, AND AUXILIARY LANES IN CORONA.	Santa Ana River, Reach 2 & 3, Aliso Creek, Wardlow Wash, Fresno Cyn Wash and Prado Basin	N	N	Minimized	29.3	8.1	25	SWPPP	DETBAS, BIOSWL, BIOSTP	6/29/2011	6/28/2019	11/15/2019	8/17/2022
15	0F543	RIV	091	6.1	7.6	8	EXPRESS LANES NORTH DIRECT CONNECTOR (NDC) (DESIGN BUILD)	NA	NA	NA	NA	NA	NA	NA	NA	NA	1/16/2019	6/1/2020	11/2/2020	11/1/2022
16	0F560	SBD	040	21.9		6	PREPARE RECLAMATION PLAN	NA	NA	NA	NA	NA	NA	NA	NA	NA	3/1/2019	8/2/2019	12/6/2019	1/4/2021
17	0G170	RIV	010	2.2	3.6	8	INTERCHANGE IMPROVEMENTS	San Timoteo Creek Reach 1 to 3, Santa Ana River Reach 1 to 5	Y	N	Minimized	21.0	10.74	64.0	SWPPP	C	12/21/2020	4/5/2022	10/7/2022	10/7/2024
18	0G280	RIV	010	5	6.1	8	INTERCHANGE IMPROVEMENTS	NA	NA	NA	NA	NA	NA	NA	NA	NA	9/16/2019	9/14/2021	1/18/2022	1/23/2023
19	0G690	SBD	018	44.3	68.5	8	RELINE OR REPLACE EXISTING CULVERTS	Big Bear Lake	N	Y	NA	0.5	0	0	SWPPP	E	6/1/2020	1/18/2022	7/15/2022	9/1/2023
20	0G691	SBD	018	8	17.8	8	REPAIR, RELINE OR REPLACE EXISTING CULVERTS	East Twin Creek, Waterman Canyon Creek	N	Y	NA	0.5	0	0	SWPPP	E	5/1/2020	5/2/2022	1/17/2023	10/3/2023
21	0G770	RIV	015	0	41.8	8,9	INSTALL TMS FIELD ELEMENTS	Various	N	N	NA	30.3	0	0	SWPPP	E	5/4/2016	6/1/2016	8/15/2017	12/9/2019

¹ Regional Board

² Supplemental Environmental Projects designated as “SEP.”

³ Projects adjacent to Drinking Water Reservoirs or Ground Water Recharge Facilities are noted (DW) and (GW), respectively.

⁴ Water bodies with designation for 303(d) designation are noted in parentheses.

⁵ If yes, a 401 permit will be required for this project.

⁶ Regional Water Board Permits required other than Construction General Permit and Clean Water Act Section 401 water quality certification, such as Waiver of Discharge Requirements, Dewatering Permits, Bridge Painting WDRs, etc.

⁷ This information may come from the Water Quality Assessment Report prepared for each project, a Water Quality Technical Memorandum, or other document that evaluates the water quality impacts of a project.

⁸ A description of the Construction Controls is available in the project’s Storm Water Pollution Prevention Plan (SWPPP), Water Pollution Control Plan (WPCP), or is To Be Determined (TBD) if the Disturbed Soil Area is unavailable.

⁹ Treatment Control Status identified by: device type/number of devices, exempt (“E”), or under consideration (“C”). See Treatment Control Status Legend below for device type abbreviations.

Table 6-1: District 8 Anticipated Project Development and Construction Schedule

No.	EA	Project Location					Project Description ^{2,3}	Water Bodies Within or Adjacent to Project Limits ⁴	Dredge and Fill Activities (Y/N/NA) ⁵	Other Regional Water Board Permits Required ⁶	Potential and Actual Impacts of Project's Discharge ⁷	Disturbed Soil Area (acres)	Area of New Impervious Surface (acres)	Percentage of New Impervious Surface to Existing Impervious Surface	Description of Construction Controls (SWPPP/WPCP/TBD) ⁸	Post-Construction Treatment Control Type, Quantity ⁹	Anticipated Project Delivery Schedule		Construction Period	
		Co.	Route	Begin PM	End PM	RB ¹											PA&ED Date	PS&E Date	Start Date	End Date
22	OG790	SBD	071	0	8.5	8	INSTALL RMS, CCTV, CMS, VDS & FIBER OPTIC COMM SYS	San Antonio Creek Channel, Chino Creek, Lake Serrenos Channel	N	N	NA	0.8	0	0	WPCP	E	12/3/2018	5/1/2020	1/5/2021	2/1/2022
23	OG800	SBD	038	47.5	59.4	8	RELINE OR REPLACE CULVERTS	Big Bear Lake	N	N	NA	0.1	0	0	WPCP	E	10/1/2018	3/16/2020	9/15/2020	11/22/2021
24	OG850	RIV	010	71.8	72.4	7	DEMOLISH & RECONSTRUCT COMFORT STATIONS, ADD MAINTENANCE CREW ROOM/CHP OFFICE	Unnamed tributaries to Whitewater River	N	N	Minimized	47.7	4.66	122.6	SWPPP	C	7/20/2020	2/22/2022	10/3/2022	6/3/2024
25	OG860	SBD	040	105.3	105.6	7	DEMOLISH AND RECONSTRUCT SRRA	Watson Wash	N	N	NA	20	NA	NA	SWPPP	C	10/1/2018	5/1/2020	2/1/2021	6/1/2022
26	OH470	SBD	002	2.4		6	UPGRADE BRIDGE RAILS, INSTALL MGS AND WIDEN EXISTING BR ON BOTH SIDES AT SHEEP CREEK BRIDGE NO. 54-360	Sheep Creek	N	N	NA	0.65	0	0	WPCP	E	2/9/2016	2/15/2018	12/3/2018	11/2/2020
27	OJ070	SBD	215	0.58	1.66	8	RECONSTRUCT INTERCHANGE	Santa Ana River Reach 4	N	N	Minimized	20.6	6.67	83.9	SWPPP	DETBAS	3/5/2014	4/13/2017	11/6/2017	10/1/2020
28	OJ080	RIV	015	36.8	51.4	8	CONSTRUCT 1 OR 2 EXPRESS LANES IN EACH DIRECTION & INSTALL MEDIAN BARRIER	Temescal Wash, Bedford Wash, Joseph Canyon Wash, County Flood Control	Y	N	Minimized	132	79	100	SWPPP	DETBAS	6/1/2016	4/14/2017	4/13/2017	12/31/2020
29	OJ400	SBD	010	3.8	5.6	8	CONST PARTIAL CLOVERLEAF IC AT GROVE AVE, REMOVE FOURTH ST IC, REPLACE UC AT GROVE AVE & FOURTH ST & WIDEN FOURTH ST	Cucamonga Creek	N	N	Minimized	36	-2.5	-3.5	SWPPP	E	8/23/2019	2/5/2021	8/2/2021	8/2/2023
30	OJ440	RIV	215	17.4	19.3	8	WIDEN NEWPORT RD OC., RECONSTRUCT INTERCHANGE RAMPS TO MODIFIED PARTIAL CLOVERLEAF IC	Salt Creek	N	N	Minimized	35	6.3	26.5	SWPPP	BIOSWL	11/8/2012	7/31/2014	4/5/2015	2/27/2020
31	OJ610	RIV	015	36.1	37.64	6	RECONSTRUCT EXISTING INTERCHANGE, REPLACE OVER-CROSSING AND REALIGN ROAD	Bedford Canyon Wash, Joseph Canyon Wash	Y	N	Minimized	32.1	8.8	48	SWPPP	BIOSWL, BIOSTP, DETBAS, INDBAS	7/1/2009	5/17/2017	8/23/2017	9/3/2019
32	OJ872	RIV	074	73	92.3	7	REPLACE & RELINE CULVERTS	NA	NA	NA	NA	NA	NA	NA	NA	NA	12/28/2018	9/16/2019	1/15/2020	2/20/2021
33	OK121	SBD	015	12.8	14.8	8	REHABILITATE EXISTING MAINLINE AND RAMP PAVEMENT	Lytle Creek	N	N	N	14.28	12.33	86	SWPPP	C	1/23/2018	3/1/2019	12/3/2019	3/1/2021
34	OK122	SBD	015	28.6	37.5	6	REHABILITATE EXISTING MAINLINE AND RAMP PAVEMENT	Oro Grande Wash	N	N	Minimized	166.53	117.49	0.65	SWPPP	C	5/17/2018	2/3/2020	10/29/2020	5/10/2023
35	OK123	SBD	015	64.6	75.3	6	REHABILITATE EXISTING MAINLINE AND RAMP PAVEMENT	Mojave River	N	N	Minimized	0.5	0.0	0	WPCP	C	9/14/2017	10/2/2019	8/3/2020	8/6/2021
36	OK730	RIV	010	54.2	55.6	7	WIDEN EXISTING BRIDGES, LOCAL STREET & RECONFIGURE DIAMOND IC	Coachella Valley Stormwater Channel, Whitewater River	N	N	Minimized	33.6	8	81.6	SWPPP	C	4/28/2020	8/11/2021	2/11/2022	2/13/2024
37	OK840	SBD	L5726			8	DEMOLISH EXISTING OFFICE & CONSTRUCT NEW OFFICE BLDG, UPGRADE STORAGE BUILDING & FUEL DISPENSER CANOPY	Lytle Creek	N	N	Minimized	0.5	0	0	WPCP	E	10/31/2017	6/3/2019	3/5/2020	6/3/2021
38	OM590	RIV	060	20	22	8	INTERCHANGE IMPROVEMENTS	San Jacinto River	N	N	NA	54	13	35	SWPPP	E	9/3/2019	3/15/2021	9/15/2021	9/15/2022
39	OM900	RIV	111	18	19	7	CONSTRUCT AVE 66 GRADE SEPARATION BYPASS AT UPRR	Salton Sea	Y	Y	Minimized	10	3.5	100	SWPPP	C	12/15/2017	6/28/2019	10/30/2019	2/26/2021
40	OM910	RIV	010	54.9	56.5	7	CONSTRUCT TIGHT DIAMOND INTERCHANGE	Coachella Valley Stormwater Channel, Salton Sea	N	N	Minimized	26.8	8.5	98.8	SWPPP	DETBAS, INDBAS	4/28/2020	8/11/2021	2/15/2022	2/13/2024
41	OM94L	SBD	215	0	5.1	8	REPLACE LANDSCAPE AND IRRIGATION.	NA	NA	NA	NA	NA	NA	NA	NA	NA	4/8/2019	5/1/2020	1/5/2021	1/5/2022
42	ON670	RIV	074	28.1	37.4	8	CONSTRUCT RAISED CURB MEDIAN & LEFT TURN LANES	San Jacinto River	N	N	Minimized	20.7	10.4	12	SWPPP	E	6/30/2017	6/30/2018	12/12/2018	6/4/2020
43	ON69U	RIV	060	22.1	26.61	8	CONSTRUCT A TRUCK CLIMBING LANE (E/B) AND TRUCK DESCENDING LANE (W/B) WITH STANDARD INSIDE & OUTSIDE SHOULDERS BOTH DIRECTIONS	Unnamed tributaries	Y	Y	Minimized	167	22.13	53.91	SWPPP	DPPIA	5/16/2016	8/14/2018	12/4/2018	6/3/2021
44	ON940	RIV	010	14.5	19.8	7	REPAIR/REPLACE BARBED WIRE AND WIRE MESH FENCE	NA	NA	NA	NA	NA	NA	NA	NA	NA	5/8/2017	6/3/2019	1/16/2020	6/10/2021

Table 6-1: District 8 Anticipated Project Development and Construction Schedule

No.	EA	Project Location					Project Description ^{2,3}	Water Bodies Within or Adjacent to Project Limits ⁴	Dredge and Fill Activities (Y/N/NA) ⁵	Other Regional Water Board Permits Required ⁶	Potential and Actual Impacts of Project's Discharge ⁷	Disturbed Soil Area (acres)	Area of New Impervious Surface (acres)	Percentage of New Impervious Surface to Existing Impervious Surface	Description of Construction Controls (SWPPP/WPCP/TBD) ⁸	Post-Construction Treatment Control Type, Quantity ⁹	Anticipated Project Delivery Schedule		Construction Period	
		Co.	Route	Begin PM	End PM	RB ¹											PA&ED Date	PS&E Date	Start Date	End Date
45	0N971	SBD	395	39	45.9	6	CONSTRUCT 4' MEDIAN BUFFER AND WIDEN EXISTING SHOULDER TO 8', CONSTRUCT CENTERLINE RUMBLE STRIPS	Mojave River	Y	Y	Minimized	57.4	9.66	28.9	SWPPP	DPPIA	6/30/2015	6/15/2017	11/29/2017	8/2/2019
46	0N972	SBD	395	35.5	39.1	6	CONSTRUCT 4' MEDIAN BUFFER AND WIDEN EXISTING SHOULDERS TO 8', INSTALL CENTERLINE & SHOULDER RUMBLE STRIPS	Mojave River	Y	Y	Minimized	28	4.35	28.2	SWPPP	DPPIA	9/26/2016	6/29/2018	2/4/2019	4/2/2020
47	0P390	SBD	018	101.5	115.9	6	WIDEN EXISTING SHOULDER TO 8' AND CONSTRUCT SHOULDER RUMBLE STRIPS (SEE INTERIM SOLUTION 1F680)	Fremon Wash, Sheep Creek, Le Montaine Creek	N	N	NA	27.8	10.5	30	SWPPP	E	12/1/2015	6/29/2018	4/8/2019	4/8/2021
48	0P490	RIV	060	12.1	12.9	8	REPLACE EXISTING METAL BEAM GUARDRAIL WITH CONCRETE BARRIER	Santa Ana River	N	N	NA	0.2	0	0	WPCP	E	11/2/2017	10/15/2018	2/15/2019	9/16/2019
49	0Q120	SBD	018	99.4	101	6	CONSTRUCT RAISED CURB MEDIAN AND RECONFIGURE LEFT TURN POCKETS	Mojave River	N	N	NA	2.42	1.88	13	SWPPP	DPPIA	6/30/2016	6/29/2018	3/1/2019	4/1/2020
50	0Q220	RIV	215	14.1	15.26	8,9	CONSTRUCT NEW IC	Warm Springs Creek	Y	Y	Minimized	56.4	8.3	100	SWPPP	C	7/15/2019	4/20/2020	10/22/2020	9/13/2022
51	0Q300	SBD	138	17.1	19.2	8	REALIGN AND CONSTRUCT 2-LANE PAVED SECTION WITH OUTSIDE SHOULDERS, 3 WILDLIFE CROSSINGS & OFF HIGHWAY VEHICLE CROSSING	Crowder Creek	Y	NA	NA	NA	NA	NA	SWPPP	C	9/30/2014	9/11/2015	5/6/2016	8/30/2019
52	0Q300	SBD	138	17.1	19.2	6,8	REALIGN AND CONSTRUCT 2-LANE PAVED SECTION WITH OUTSIDE SHOULDERS, 3 WILDLIFE CROSSINGS & OFF HIGHWAY VEHICLE CROSSING	Tributaries to Cajon Creek	Y	N	Minimized	43	4.4	66	SWPPP	DPPIA	9/30/2014	9/11/2015	5/6/2016	8/30/2019
53	0Q320	SBD	210	30.23		8	WIDEN TO 6 LANES, WIDEN SB OFF RAMP & SB ON RAMP, CONSTRUCT TIE BACK WALL	NA	NA	NA	NA	NA	NA	NA	NA	NA	12/16/2019	12/16/2020	12/6/2021	12/15/2022
54	0Q75U	SBD	060	4.6	9.96	8	REPLACEMENT OF TWO OUTSIDE LANES AND CONCRETE SLABS	Lower Deep Creek Channel, Cucamonga Channel, Cypress Channel	N	N	NA	0.25	0	0	WPCP	E	2/18/2016	6/20/2018	3/1/2019	5/3/2021
55	0Q910	SBD	010	23.8	23.83	8	BRIDGE REHABILITATION AND SEISMIC RETROFIT	Santa Ana River Reach 5	N	N	NA	0.5	0	0	WPCP	E	12/1/2015	6/29/2018	4/2/2019	7/2/2020
56	0Q910	SBD	010	23.8	23.83	8	BRIDGE REHABILITATION AND SEISMIC RETROFIT	Santa Ana River, Reach 5	N	N	NA	0.5	0	0	SWPPP	E	12/1/2015	6/29/2018	4/2/2019	7/2/2020
57	0R010	RIV	091	0.348		8	REPLACE 82' LONG SEGMENT OF EXISTING 12'X12' CULVERT	Unnamed tributary	Y	Y	Minimized	0.8	0	0	SWPPP	E	12/22/2016	9/3/2019	5/1/2020	2/1/2021
58	0R141	SBD	040	100	125	7	REGRADE MEDIAN CROSS SLOPE	Watson Wash, Homer Wash,	N	N	NA	100	0	0	SWPPP	E	3/30/2020	4/30/2021	11/30/2021	7/31/2023
59	0R142	SBD	040	125	154.6	7	REGRADE MEDIAN CROSS SLOPE	Piute Wash, Bat Cave Wash, Colorado River	N	N	NA	100	0	0	SWPPP	E	12/3/2018	3/3/2020	12/1/2020	6/1/2021
60	0R150	SBD	040	75	100	6	REGRADE MEDIAN CROSS SLOPE	Old Dad Wash, Badger Wash, Granite Wash, Marble Wash	N	N	Minimized	1200	0	0	SWPPP	E	9/1/2018	6/3/2019	2/3/2020	11/1/2021
61	0R160	SBD	040	50	75	6,7	REGRADE MEDIAN CROSS SLOPE	Unnamed Washes, Boundary Wash and Orange Blossom Wash	NA	N	NA	>20	<1	<10	SWPPP	E	8/18/2016	6/28/2017	11/15/2018	3/1/2022
62	0R170	SBD	040	25	50	6,7	REGRADE MEDIAN CROSS SLOPE	Troy Lake, Broadwell Lake	N	N	NA	251	0	0	SWPPP	E	11/30/2020	2/28/2022	11/30/2022	5/31/2024
63	0R310	RIV	074	12.1	14.3	8	RECONSTRUCT SIDEWALKS AND CURB RAMPS & DRIVEWAYS	Tributaries to Lake Elsinore	N	N	NA	2.16	0.66	5	SWPPP	E	9/8/2016	5/23/2018	3/4/2019	4/1/2020
64	0R340	SBD	038	30.86		8	BRIDGE REHABILITATION AND UPGRADE BRIDGE RAILING TO STANDARDS	Santa Ana River	N	N	NA	0.6	0.14	7	SWPPP	E	12/11/2015	8/14/2017	4/20/2018	7/2/2019
65	0R350	RIV	010	16.1		7	SEISMIC RETROFIT	San Gorgonio & Whitewater River	N	N	NA	1.12	0	0	WPCP	E	3/14/2016	6/27/2017	2/21/2018	7/2/2019
66	0R380	SBD	040	153.9	154.6	6	BRIDGE REHABILITATION AND/OR REPLACEMENT AGREE # 1653 W/ARIZONA DOT FOR PA&ED ON 2018-05.15 (RY)	Colorado River	N	N	NA	0.35	0	0	SWPPP	E	11/1/2021	5/1/2024	2/3/2025	3/1/2029

Table 6-1: District 8 Anticipated Project Development and Construction Schedule

No.	EA	Project Location					Project Description ^{2,3}	Water Bodies Within or Adjacent to Project Limits ⁴	Dredge and Fill Activities (Y/N/NA) ⁵	Other Regional Water Board Permits Required ⁶	Potential and Actual Impacts of Project's Discharge ⁷	Disturbed Soil Area (acres)	Area of New Impervious Surface (acres)	Percentage of New Impervious Surface to Existing Impervious Surface	Description of Construction Controls (SWPPP/WPCP/TBD) ⁸	Post-Construction Treatment Control Type, Quantity ⁹	Anticipated Project Delivery Schedule		Construction Period	
		Co.	Route	Begin PM	End PM	RB ¹											PA&ED Date	PS&E Date	Start Date	End Date
67	0R420	SBD	L5758			8	BUILD MAINTENANCE FACILITY ADJACENT TO SOUTHERN REGION LAB (DESIGN BUILD CANDIDATE)	County Flood Channel	N	N	Minimized	8	8	100	SWPPP	INDBAS, BIOSWL	7/15/2019	9/7/2021	5/10/2022	6/17/2024
68	0R432	SBD	038	50.4	59.4	8	IMPLEMENT SEDIMENT CONTROLS (PLANTING) PHASE 2	NA	NA	NA	NA	NA	NA	NA	NA	NA	10/24/2016	7/5/2019	3/27/2020	7/5/2023
69	0R570	RIV	010	6.48	6.71	8	INSTALL METAL BEAM GUARDRAIL	NA	NA	NA	NA	NA	NA	NA	NA	NA	10/26/2018	3/1/2019	6/14/2019	10/15/2019
70	0R781	RIV	074	82.3	83.2	7	INSTALL MIDWEST GUARDRAIL SYSTEM (MGS) & TERMINAL SYSTEM END TREATMENT	Horsethief Creek	N	N	N	0.44	0	Undefined	WPCP	E	6/15/2018	3/1/2019	6/17/2019	10/15/2019
71	0R800	SBD	015	0	12.2	8	TWO EXPRESS LANES IN EACH DIRECTION FR RTE 60 TO RTE 210, 1 EXPRESS LANE IN EACH DIRECTION FR CANTU-GALLEANO RANCH RD TO RTE 60 & FR RTE 210 TO DUNCAN CANYON RD & 1 AUX LN IN EACH DIRECTION BET SR 60 & I-10 AND NB BET 4TH ST & MILLER AVE	East Etiwanda Creek, Day Creek	Y	Y	Minimized	77	39	12	SWPPP	DPPPIA, BIOTSP, BIOSWL	8/15/2018	8/19/2020	3/23/2021	3/20/2024
72	0R850	SBD	5718	170.6		6	BUILDING CONSTRUCTION	Unknown	N	N	Minimal Impact	2.0	0.86	43	WPCP	E	9/19/2014	11/15/2018	3/1/2019	8/1/2019
73	1A830	SBD	010	17.8	19.3	8	WIDEN CEDAR AVE OC (BR #54-0035), UPRR/CEDAR AVE OH (BR #54C-103), MODIFY ON & OFF RAMPS & WIDEN CEDAR AVE	Santa Ana River, Reach 4	Y	N	Minimal Impact	15.8	3.5	30	SWPPP	E	7/8/2013	10/1/2020	5/3/2021	5/1/2023
74	1C081	RIV	010	60.9	74	7	REHABILITATE MAINLINE PAVEMENT, SHOULDERS AND RAMPS	NA	NA	NA	NA	NA	NA	NA	NA	NA	9/2/2020	6/2/2022	1/3/2023	1/6/2026
75	1C082	RIV	010	105	134	7	REHABILITATE MAINLINE PAVEMENT, SHOULDERS AND RAMPS	NA	NA	NA	NA	NA	NA	NA	NA	NA	7/2/2019	6/2/2020	1/5/2021	1/2/2024
76	1C083	RIV	010	134	156.5	7	REHABILITATE MAINLINE PAVEMENT, SHOULDERS AND RAMPS	NA	NA	NA	NA	NA	NA	NA	NA	NA	7/2/2019	6/2/2020	1/5/2021	1/2/2024
77	1C100	SBD	018	9.1	17.8	8	MILL AND OVERLAY PAVEMENT AND INCLUDE DIGOUTS	Waterman Canyon Creek	Y	Y	Minimized	3	3	1	SWPPP	E	5/9/2016	5/1/2017	10/27/2017	9/3/2019
78	1C160	RIV	060	12.2	21.4	8	ROADSIDE SAFETY IMPROVEMENTS	Unnamed tributaries to San Jacinto River	N	N	NA	0.85	0.85	0.5	WPCP	E	6/29/2017	4/3/2018	1/3/2019	9/27/2019
79	1C200	RIV	015	6.45	8.17	9	RELOCATE EXISTING ROADSIDE FACILITIES TO SAFE WORK LOCATIONS AWAY FROM TRAVEL WAY; PAVING AREAS BEYOND THE GORE, NARROW AREAS AND SLOPES ADJACENT TO BRIDGE STRUCTURES; PROVIDING VEGETATION CONTROL TREATMENTS UNDER EXISTING GUARDRAIL, IN LOW VISIBILITY ARE	Santa Gertrudis and Warm Springs Creek	N	N	NA	1.59	0	0	WPCP	E	6/30/2016	2/28/2018	1/2/2019	1/2/2020
80	1C210	RIV	010	6.77	9.57	7,8	RELOCATE EXISTING ROADSIDE FACILITIES TO SAFE WORK LOCATIONS AWAY FROM TRAVEL WAY; PAVING AREAS BEYOND THE GORE, NARROW AREAS, AND SLOPES ADJACENT TO BRIDGE STRUCTURES; PROVIDING VEGETATION CONTROL TREATMENTS UNDER EXISTING GUARDRAIL, IN LOW VISIBILITY AR	Santa Ana River and San Jacinto River	N	N	NA	0.85	0	0	WPCP	E	5/12/2017	6/12/2018	1/14/2019	1/15/2021
81	1C29U	SBD	010	26.8	34.2	8	INSTALL GORE PAVING, PAVE UNDER GUARDRAIL, MVP'S, ACCESS ROADS, SLOPE PAVING, ACCESS GATES	Mission Channel, Zanja Creek & unnamed blue line streams	N	N	N	3.8	0.5	13	SWPPP	E	3/29/2018	2/6/2019	7/12/2019	10/8/2020
82	1C300	SBD	010	34.2	39.1	8	RELOCATE IRRIGATION FACILITIES, INSTALL MAINTENANCE VEHICLE PULLOUTS, INSTALL GORE PAVING, SLOPE PAVING, ACCESS TRAIL & GATES, MAINTENANCE ACCESS ROADS	Upper Santa Ana River and San Timoteo Wash	N	N	N	0.8	0.07	1	WPCP	C	8/1/2018	9/19/2019	6/15/2020	3/15/2021
83	1C330	SBD	010	21.6	23.6	8	REMOVE AND REPLACE DISEASED PLANTS	NA	NA	NA	NA	NA	NA	NA	NA	NA	10/26/2017	6/25/2018	2/4/2019	7/5/2019

Table 6-1: District 8 Anticipated Project Development and Construction Schedule

No.	EA	Project Location					Project Description ^{2,3}	Water Bodies Within or Adjacent to Project Limits ⁴	Dredge and Fill Activities (Y/N/NA) ⁵	Other Regional Water Board Permits Required ⁶	Potential and Actual Impacts of Project's Discharge ⁷	Disturbed Soil Area (acres)	Area of New Impervious Surface (acres)	Percentage of New Impervious Surface to Existing Impervious Surface	Description of Construction Controls (SWPPP/WPCP/TBD) ⁸	Post-Construction Treatment Control Type, Quantity ⁹	Anticipated Project Delivery Schedule		Construction Period	
		Co.	Route	Begin PM	End PM	RB ¹											PA&ED Date	PS&E Date	Start Date	End Date
84	1C380	RIV	010	8.2	25.1	7,8	PAVEMENT REPLACEMENT LANES 3 & 4 & OUTSIDE SHOULDERS WITH JPCP, OVERLAY INSIDE SHOULDER, CONCRETE SLAB REPLACEMENT LANE 1 & 2 & UPGRADE CURB RAMPS	Potrero Creek, Smith Creek, San Gorgonio River	N	N	NA	0.69	0	0	WPCP	E	12/22/2015	6/12/2018	1/14/2019	1/15/2021
85	1C38U	RIV	010	6.7	25.1	7, 8	PAVEMENT REPLACEMENT LANES 3 & 4 & OUTSIDE SHOULDERS WITH JPCP, OVERLAY INSIDE SHOULDER, CONCRETE SLAB REPLACEMENT LANE 1 & 2 & UPGRADE CURB RAMPS	NA	NA	NA	NA	NA	NA	NA	NA	NA	12/22/2015	6/12/2018	3/1/2019	5/4/2021
86	1C590	RIV	074	7	14.4	8	SEDIMENT STABILIZATION, EROSION CONTROL (AKA SOURCE CONTROL)	Lake Elsinore	N	N	NA	1.2	0	0	SWPPP	E	10/1/2018	5/3/2019	1/3/2020	9/2/2021
87	1C610	RIV	015	45.6	47.3	8	EROSION CONTROL (AKA SOURCE CONTROL)	Santa Ana River, Reach 3	N	N	Stabilizes Soils	1	0	0	WPCP	E	6/30/2015	8/22/2016	2/27/2017	7/31/2020
88	1C660	RIV	215	9	16	8,9	STABILIZE SLOPES TO DECREASE SEDIMENT TRANSPORT	San Jacinto River Reach 1 and Lake Elsinore	N	N	NA	5.2	0	0	SWPPP	E	9/6/2018	12/11/2019	8/12/2020	8/13/2021
89	1C680	RIV	074	13.2	34	8,9	BRIDGE RAIL REPLACEMENT, REPLACE 2 BRIDGES AND EXTEND ONE CULVERT	San Jacinto River, Blue Ridge Wash, Arroyo Seco Creek, Temecula Creek, Cahuilla Creek	N	N	NA	0.3	0	0	WPCP	E	12/3/2018	4/2/2020	1/4/2021	1/3/2022
90	1C720	SBD	015	96.1	124.3	8	REGRADE MEDIAN CROSS SLOPE	Matrix Wash, Mojave River and its tributaries	N	N	NA	103	0	0	SWPPP	E	12/29/2017	1/30/2020	10/22/2020	11/22/2021
91	1C850	RIV	074	0	5.8	9	WIDEN EXISTING LANES TO PROVIDE 12' LANES, 4' SHOULDERS & GROUND-IN RUMBLE STRIPS CENTERLINE & SHOULDERS	San Juan Creek, Morrell Creek	N	N	NA	42	7	10	SWPPP	E	1/2/2019	3/26/2020	9/10/2020	3/23/2022
92	1E060	SBD	018	97	99.5	8	WIDEN ROADBED & CONSTRUCT RAISED MEDIAN CURB	Mojave River	N	N	Minimal	1.2	1.2	7	SWPPP	E	9/4/2018	5/1/2020	11/2/2020	11/1/2021
93	1E460	RIV	074	37.7	44.7	8	CONSTRUCT RAISED CURB MEDIAN & LEFT TURN POCKETS, WIDEN OUTSIDE SHOULDERS	Riverside Flood Control Channels	N	N	NA	7	0	0	SWPPP	E	9/29/2016	5/30/2018	2/4/2019	2/4/2020
94	1E550	SBD	127	28	28.5	6	CONSTRUCT 8-FT SHOULDERS AND INSTALL CENTERLINE/SHOULDER RUMBLE STRIPS	Salt Creek	N	N	NA	5	0.8	47	WPCP	E	8/31/2017	6/29/2018	1/3/2019	8/2/2019
95	1E560	SBD	247	39.5	40	7	WIDEN SHOULDERS AND INSTALL RUMBLE STRIPS ON SHOULDERS & CENTERLINE	Dry washes	N	N	NA	1.6	0.5	4	WPCP	E	2/6/2017	6/1/2018	3/1/2019	10/1/2019
96	1E570	RIV	010	27.7		7	REHAB BRIDGE	Whitewater River	N	N	NA	1.7	0	0	SWPPP	E	6/18/2018	6/3/2019	2/21/2020	11/15/2021
97	1E581	SBD	095	40	40.4	7	WIDEN SHOULDERS AND PLACE GROUND-IN RUMBLE STRIPS	Unnamed tributaries	N	N	NA	3	0.78	5	SWPPP	E	4/10/2017	6/30/2017	6/25/2018	7/26/2019
98	1E582	SBD	095	65.4	66	7	WIDEN SHOULDERS AND INSTALL GROUND-IN RUMBLE STRIPS ALONG CENTERLINE & OUTSIDE SHOULDERS	No Receiving waters	N	N	NA	7.7	0.49	2	SWPPP		3/26/2018	6/29/2018	2/4/2019	3/2/2020
99	1E610	SBD	062	41	41.5	7	WIDEN SHOULDERS AND INSTALL RUMBLE STRIPS (PORTIONS)	Dog Wash	N	N	NA	7.7	0.49	2	SWPPP	E	5/4/2017	6/28/2018	12/20/2018	10/21/2019
100	1E710	SBD	010	31.6	31.9	8	INTERCHANGE IMPROVEMENT (STREAMLINED OVERSIGHT)	NA	NA	NA	NA	NA	NA	NA	NA	NA	2/16/2017	1/2/2019	6/3/2019	6/1/2020
101	1E720	RIV	010	74.1		7,8	METHACRYLATE DECKS, REPLACE JOINT SEALS ETC.	San Timoteo Wash, Santa Ana River Reach 4, Day Creek, Colorado River, Corn Springs Wash, Riverside Canal, Coachella Valley Stormwater Channel	N	N	NA	0.3	0	0	SWPPP	E	11/2/2017	11/1/2018	7/1/2019	7/1/2020
102	1E770	RIV	074	11		8	SLOPE STABILIZATION	San Jacinto River	N	N	NA	0.7	0.1	0.1	WPCP	E	10/24/2017	9/4/2018	5/1/2019	10/1/2019

Table 6-1: District 8 Anticipated Project Development and Construction Schedule

No.	EA	Project Location					Project Description ^{2,3}	Water Bodies Within or Adjacent to Project Limits ⁴	Dredge and Fill Activities (Y/N/NA) ⁵	Other Regional Water Board Permits Required ⁶	Potential and Actual Impacts of Project's Discharge ⁷	Disturbed Soil Area (acres)	Area of New Impervious Surface (acres)	Percentage of New Impervious Surface to Existing Impervious Surface	Description of Construction Controls (SWPPP/WPCP/TBD) ⁸	Post-Construction Treatment Control Type, Quantity ⁹	Anticipated Project Delivery Schedule		Construction Period	
		Co.	Route	Begin PM	End PM	RB ¹											PA&ED Date	PS&E Date	Start Date	End Date
103	1E780	SBD	330	37.1	39.8	8	HAND SCALE LOOSE ROCK & PERFORM LIMITED EXCAVATION OF SLOPES AT LOC 1 & 2 TO CREATE CATCHMENT AREAS & CONSTRUCT ROCK-FALL BARRIERS AT LOC 1	Little Mill Creek	N	N	NA	2.1	0.1	5	SWPPP	TRCSND 5	1/31/2018	12/3/2018	7/2/2019	1/2/2020
104	1E810	SBD	215	14.1	14.9	8	UPGRADE EXISTING WEIGH IN MOTION (WIM) SYSTEM	NA	N	N	NA	0.33	0.33	1	WPCP	E	5/19/2017	5/30/2018	3/1/2019	2/3/2020
105	1E840	SBD	062	29.3	33.6	7	MILL AND OVERLAY MAINLINE & SHOULDERS, UPGRADE ADA RAMPS, INSTALLATION OF PEDESTRIAN BEACON AND CROSS WALK	Mission Creek, Dry Morongo Creek, Big Morongo Creek, Brunt Mtn. Wash	N	N	NA	0.95	0.42	0.5	WPCP	E	6/28/2016	3/16/2020	1/15/2021	3/15/2022
106	1E850	SBD	142	0	5.8	8	MILL AND OVERLAY MAINLINE & SHOULDERS	Carbon Canyon Creek, Chino Creek	N	N	NA	0.7	0	0	WPCP	E	8/12/2016	6/1/2018	2/4/2019	3/2/2020
107	1E972	RIV	111	55.9	63.4	7	RECONSTRUCT EXISTING MBGR WITH MGS & UPGRADE END TREATMENTS	San Gorgonio River and Headwaters Whitewater River	N	N	NA	0.51	0	0	WPCP	E	1/16/2018	10/15/2018	2/15/2019	9/16/2019
108	1F131	SBD	095	9.7	33.6	7	COLD IN-PLACE RECYCLE	NA	NA	NA	NA	NA	NA	NA	NA	NA	5/18/2018	2/21/2020	10/26/2020	10/25/2021
109	1F132	SBD	095	64.5	80.5	7	MILL AND OVERLAY WITH DIGOUTS	NA	NA	NA	NA	NA	NA	NA	NA	NA	5/18/2018	2/21/2020	10/26/2020	10/25/2021
110	1F133	SBD	062	122	142.7	7	REHABILITATE PAVEMENT & UPGRADE GUARDRAIL	NA	NA	NA	NA	NA	NA	NA	NA	NA	6/12/2018	2/21/2020	10/26/2020	10/25/2021
111	1F141	RIV	015	0	3.1	9	REPLACE NUMBER 3 & 4 LANES IN BOTH DIRECTIONS	Temecula Creek and Rainbow Creek	N	N	Minimal	52.6	49		SWPPP	DPPIA	3/23/2018	8/6/2019	1/22/2020	4/22/2021
112	1F142	RIV	015	23.9	33.4	8	SLAB REPLACEMENT (CAPM)	Temescal Creek Reach 6	N	N	NA	12.7	12.3		SWPPP	Infiltration Areas	11/8/2017	3/4/2019	1/15/2020	8/2/2021
113	1F143	RIV	015	38.2	51.5	8	SLAB REPLACEMENT (CAPM)	Temescal Creek Reach 1 and Santa River Reach 3	N	N	N	26.2	0.0	0.0	SWPPP	E	4/13/2018	3/2/2020	1/15/2021	8/2/2021
114	1F260	SBD	060	7.8	7.9	8	WIDEN ARCHIBALD AVE BETWEEN EAST OAK HILL DR AND MONTICELLO PLACE & WIDEN ON & OFF RAMPS	Cucamonga Channel, Lower Deer Creek Channel	N	N	Minimized	3.3	1.61	27	SWPPP	BIOSTP, BIOSWL, DPPIA, DETBAS, MF-ADS	3/8/2018	4/24/2019	8/30/2019	4/30/2021
115	1F280	SBD	040	134		7	REMOVE & PLACE ROCK SLOPE PROTECTION	South Fork Piute Creek	Y	Y	NA	0.46	0	0	SWPPP	E	11/28/2016	6/29/2017	11/30/2017	9/4/2019
116	1F361	SBD	060	0	9.9	8	REPLACE EXISTING SIGNS WITH RETRO-REFLECTIVE SHEETING (PHASE 1)	San Antonio Channel, Magnolia SD, San Antonio Ave SD, Sultana-Cypress SD, Cucamonga Channel, Lower Deer Ck Channel,	N	N	N	NA (Exception Letter)	NA (Exception Letter)	NA (Exception Letter)	WPCP	N	8/1/2018	3/2/2020	11/2/2020	3/1/2022
117	1F362	SBD	071	0	8.5	8	REPLACE EXISTING GUIDE SIGNS WITH TYPE XI REFLECTIVITY (PHASE 2)	Chino Creek, San Antonio Channel, Little Chino Creek, Lake Los Serranos Channel, Chino Downs Channel & Prado Basin	N	N	N	NA (Exception Letter)	NA (Exception Letter)	NA (Exception Letter)	WPCP	N	9/13/2017	5/1/2019	12/2/2019	5/3/2021
118	1F371	RIV	060	0	22.3	8	REPLACE EXISTING GUIDE SIGNS WITH RETRO-REFLECTIVE SHEETING (PHASE 1)	Day Creek Channel, San Sevaire, BIY, Pyrite, Jurupa, Rathke, Sunnyslope Channels, Santa Ana River, Univ. Wash Channel/ SD, Sunnymead Channel, Moreno SD & unnamed blue line streams	N	N	N	NA (Exception Letter)	NA (Exception Letter)	NA (Exception Letter)	WPCP	N	8/1/2018	3/2/2020	11/2/2020	3/1/2022

Table 6-1: District 8 Anticipated Project Development and Construction Schedule

No.	EA	Project Location					Project Description ^{2,3}	Water Bodies Within or Adjacent to Project Limits ⁴	Dredge and Fill Activities (Y/N/NA) ⁵	Other Regional Water Board Permits Required ⁶	Potential and Actual Impacts of Project's Discharge ⁷	Disturbed Soil Area (acres)	Area of New Impervious Surface (acres)	Percentage of New Impervious Surface to Existing Impervious Surface	Description of Construction Controls (SWPPP/WPCP/TBD) ⁸	Post-Construction Treatment Control Type, Quantity ⁹	Anticipated Project Delivery Schedule		Construction Period	
		Co.	Route	Begin PM	End PM	RB ¹											PA&ED Date	PS&E Date	Start Date	End Date
119	1F372	RIV	010	0	156.5	7, 8	REPLACE EXISTING GUIDE SIGNS WITH TYPE XI REFLECTIVITY (PHASE 2)	Little San Gorgonio, Potrero, Smith, Hathaway, San Gorgonio River, Mission Ck, Whitewater Riv, Corn Spr Wash, Colorado River & numerous unnamed blue line streams	N	N	N	NA (Exception Letter)	NA (Exception Letter)	NA (Exception Letter)	WPCP	N	9/13/2017	5/1/2019	12/2/2019	5/3/2021
120	1F400	SBD	066	21.3		8	UPGRADE TO STANDARD BRIDGE RAIL, WIDEN SIDEWALKS & SHOULDERS	Warm Creek	N	N	NA	0.24	0.09	0.5	WPCP	E	10/15/2019	1/18/2022	9/15/2022	8/15/2023
121	1F410	RIV	010	110.5		7	REPLACE BRIDGE RAILING WITH TYPE 742 CONCRETE BARRIER & EXISTING MBGR WITH MIDWEST GUARDRAIL SYSTEM (MGS)	Corn Springs Wash, Meta Ditch, Rolie Ditch, Palen Ditch	N	N	NA	0	0	0	WPCP	E	2/15/2018	1/4/2019	11/1/2019	11/3/2020
122	1F440	SBD	010	21.6	23.6	8	UPGRADE IRRIGATION FACILITIES	Santa Ana River Reach 1	N	N	N	0.69	0	0	WPCP	E	10/26/2017	6/25/2018	2/4/2019	7/5/2019
123	1F44U	SBD	010	21.6	23.6	8	INSTALL GORE PAVING, PAVE UNDER GUARDRAIL, MVP'S, ACCESS ROADS, SLOPE PAVING, ACCESS GATES & UPGRADE IRRIGATION FACILITIES	Santa Ana River and Warm Creek	N	N	N	0.9	0	0	WPCP	E	10/26/2017	6/25/2018	2/4/2019	7/5/2019
124	1F590	RIV	074	36.9	43.6	8	CONSTRUCT SIDEWALKS, CURB RAMPS, DRIVEWAYS AND OTHER PEDESTRIAN FACILITIES TO COMPLY WITH ADA REQUIREMENTS.	Riverside stormwater drains	N	N	NA	0.6	0.6	0.2	WPCP	E	6/13/2018	8/1/2019	3/3/2020	3/1/2021
125	1F600	RIV	079	25.6	26.4	8	CONSTRUCT AND UPGRADE EXISTING PEDESTRIAN FACILITIES TO CURRENT ADA STANDARDS	San Jacinto River	N	N	NA	0.14	0	0	WPCP	E	4/9/2018	3/10/2020	11/10/2020	11/12/2021
126	1F690	RIV	079	0	15.6	9	MILL AND OVERLAY, UPGRADE DIKES, ADA CURB RAMPS, GUARDRAILS	Temecula Creek, Tule Creek, Kolb Creek and Cotton Creek	N	N	NA	0.29	0	0	WPCP	E	6/27/2018	5/1/2019	4/1/2020	3/2/2021
127	1F730	SBD	215	2.4	3	8	REPLACE OVERCROSSING	Santa Ana River Reach 4	N	N	NA	3.5	0	0	SWPPP	E	4/18/2018	2/3/2020	10/1/2020	10/3/2022
128	1F760	SBD	010	36.4	39.16	8	EB TRUCK CLIMBING LANE IMPROVEMENTS	San Timoteo Creek, Oak Glen Creek, Yucaipa Creek	N	N	Minimized	13.1	13.1	40	SWPPP	C	9/27/2019	12/3/2021	5/31/2022	11/27/2023
129	1F780	SBD	095	9.6	56.5	7	INSTALL GROUND-IN SHOULDER & CENTERLINE RUMBLE STRIPS	Unnamed dry washes	N	N	NA	0.2	0	0	WPCP	E	3/23/2018	12/3/2018	7/1/2019	1/3/2020
130	1F830	SBD	330	39.6	39.7	8	REPLACE PIPE CULVERTS	Little Mill Creek	N	N	NA	1	0	0	SWPPP	E	4/12/2017	3/26/2018	11/1/2018	1/4/2021
131	1F920	RIV	010	3.6	149.1	7,8	INSTALL 4 CHANGEABLE MESSAGE SIGNS (CMS) ON RTE 10 EB & 1 CMS ON RTE 60 EB AND 1 CMS ON RTE 86 NB	Whitewater River, Coachella Valley Stormwater Channel	N	N	NA	0.6	0	0	WPCP	E	8/30/2017	6/18/2018	4/2/2019	9/1/2020
132	1G000	RIV	095	14	36.2	7	CONSTRUCT WATER DOWNSTREAM EMBANKMENT PROTECTION SYSTEM, RUMBLE STRIPS & REPLACE & UPGRADE CULVERTS	Unnamed tributaries	Y	Y	Minimized	1.93	0	0	SWPPP	E	3/1/2019	5/1/2020	2/16/2021	9/1/2023
133	1G010	SBD	062	124	142	7	CONSTRUCT WATER DOWNSTREAM EMBANKMENT PROTECTION SYSTEM AT 10 LOCATIONS & INSTALL RUMBLE STRIPS	Colorado River, Arch Creek	Y	Y	Minimized	2.21	0	0	SWPPP	E	3/1/2019	5/1/2020	12/1/2020	11/1/2022
134	1G120	RIV	243	13.3	29.7	7,8	PREVENTATIVE MAINTENANCE - OVERLAY	Black Mountain Creek, Indian Creek, Mellor Creek, tributaries to San Gorgonio River and Smith Creek	N	N	NA	0.15	0	0	WPCP	E	2/15/2017	11/1/2018	6/1/2019	12/15/2020
135	1G192	RIV	091	7.4	16.9	8	CONVERT EXISTING BUFFER SEPARATED & LIMITED ACCESS TO CONTINUOUS ACCESS HOV LANE	La Sierra Channel and Temescal Creek, Reach 1	N	N	TBD	0.1	0.0	0	WPCP	E	4/11/2018	1/2/2019	7/1/2019	4/3/2020

Table 6-1: District 8 Anticipated Project Development and Construction Schedule

No.	EA	Project Location					Project Description ^{2,3}	Water Bodies Within or Adjacent to Project Limits ⁴	Dredge and Fill Activities (Y/N/NA) ⁵	Other Regional Water Board Permits Required ⁶	Potential and Actual Impacts of Project's Discharge ⁷	Disturbed Soil Area (acres)	Area of New Impervious Surface (acres)	Percentage of New Impervious Surface to Existing Impervious Surface	Description of Construction Controls (SWPPP/WPCP/TBD) ⁸	Post-Construction Treatment Control Type, Quantity ⁹	Anticipated Project Delivery Schedule		Construction Period	
		Co.	Route	Begin PM	End PM	RB ¹											PA&ED Date	PS&E Date	Start Date	End Date
136	1G200	SBD	127	10.5	37.7	6	UPGRADE GUARD RAILING, COLD PLANE & RECYCLE EXISTING ASPHALT CONCRETE, PLACE RUBBERIZED HOT MIX ASPHALT CONCRETE AND RE-ESTABLISH SHOULDER BACKING	Salt Creek	N	N	NA	0.16	0	0	WPCP	E	1/10/2020	12/14/2020	4/12/2021	4/11/2022
137	1G210	SBD	210	10.5	12.7	8	INSTALL NEW FREEWAY TO FREEWAY RAMP METERING SYSTEMS	East Etiwanda Creek	N	N	NA	0.02	0	0	WPCP	E	1/8/2018	4/2/2019	11/1/2019	12/31/2020
138	1G280	SBD	018	95.4		6	VARIOUS REPAIRS TO 3 BRIDGES	Santa Ana River, San Timotea Wash, Warm Creek and Mojave River	N	N	NA	0	0	0	WPCP	E	4/1/2020	8/2/2021	6/1/2022	8/30/2023
139	1G400	RIV	060	9.3	9.9	8	INTERCHANGE IMPROVEMENTS	Santa Ana River Reach 1 to 4	N	N	NA	11.05	4.82	10	SWPPP	DPPIA, INDBAS, BIOSWL, or DETBAS	8/1/2019	6/5/2020	3/19/2021	9/10/2021
140	1G450	SBD	062	34.1	34.6	7	INSTALL TRAFFIC SIGNALS MEETING CURRENT ADA STANDARDS, CROSSWALKS & FLASHING BEACON SYSTEM	29 Palm Channel	N	N	NA	0.16	0	0	WPCP	E	6/30/2017	10/1/2018	4/1/2019	4/16/2020
141	1G460	SBD	015	174	175	6	COLD PLANE AND OVERLAY WITH OPEN GRADED FRICTION COURSE (OGFC)	Wheaton Wash	N	N	NA	0.1	0	0	WPCP	E	4/11/2017	2/26/2018	12/6/2018	2/3/2020
142	1G470	RIV	074	2.9	3.2	8,9	REPLACE MORRILL AND STRAWBERRY BRIDGES	San Juan Creek, Strawberry Creek	Y	Y	Minimized	1.1	0.5	2	SWPPP	E	3/1/2021	4/1/2022	12/1/2022	12/2/2024
143	1G520	SBD	018	100.9	115.9	6	COLD PLANE PAVEMENT & PLACE HMA & RHMA CONCRETE	Fremont Wash	N	N	NA	0.33	0	0	WPCP	E	7/1/2019	3/1/2021	11/1/2021	11/1/2022
144	1G550	SBD	040	28.9		6	REMOVE EXISTING WIM & INSTALL NEW WIM, ONE IN EACH DIRECTION	Unnamed dry washes	N	N	NA	0.34	0	0	WPCP	E	10/1/2019	10/1/2020	5/14/2021	5/13/2022
145	1G630	RIV	111	47.2	55.3	7	COLD PLANE 0.20' AND OVERLAY 0.20' WITH RHMA-G WITH DIGOUTS	Palm Canyon Wash and some unnamed dry washes	N	N	NA	0.25	0	0	WPCP	E	3/2/2020	8/2/2021	3/1/2022	5/1/2023
146	1G640	SBD	395	3.9	45.9	6	COLD PLANE PAVEMENT AND PLACE RUBBERIZED HOT MIX ASPHALT CONCRETE	Grande Wash, CA Aqueduct, Adelanto East Channel, Adelanto West Channel, Fremont Wash, Bucktom Wash and unnamed blue line stream	N	N	NA	0.58	0	0	WPCP	E	4/1/2020	9/1/2021	7/1/2022	12/1/2023
147	1G660	SBD	066	20.1	23.2	8	COLD PLANE 0.25' & OVERLAY WITH 0.10' RHMA-G WITH DIGOUTS & UPGRADING EXISTING CURB RAMPS	Lytle Creek	N	N	NA	0.31	0	0	WPCP	E	5/4/2020	2/1/2022	12/1/2022	12/1/2023
148	1G670	RIV	079	5.4	11.4	9	CONSTRUCT 8' PAVED SHOULDERS, INSTALL RUMBLE STRIPS & WIDEN TEMECULA BRIDGE	Arroyo Seco Creek, Temecula Creek, Kolb Creek	Y	Y	Minimized	20	11.5	30.5	SWPPP	C	11/19/2019	11/19/2021	8/19/2022	8/18/2023
149	1G720	RIV	015	20.5	21.5	8	IC IMPROVEMENTS	NA	NA	NA	NA	NA	NA	NA	NA	NA	7/9/2018	12/15/2018	4/15/2019	4/15/2020
150	1G740	SBD	015	110		6	RECONSTRUCT ERODED EARTHEN DIKE	Mojave and unnamed tributary	N	N	NA	3.1	0	0	SWPPP	E	6/3/2019	5/18/2020	1/4/2021	12/1/2021
151	1G800	SBD	010	22.8	23.8	8	INTERCHANGE MODIFICATIONS	NA	NA	NA	NA	NA	NA	NA	NA	NA	9/3/2019	2/3/2021	8/2/2021	8/1/2023
152	1G830	SBD	040	101.3		7	RETROFIT BRIDGE FOOTING AND REPLACE AND EXPAND RSP LIMITS	Halfway Hill Wash	Y	Y	Minimized	0.46	0	0	SWPPP	E	10/1/2020	4/1/2022	11/2/2022	11/2/2023
153	1G870	RIV	215	12.7	15	9	INSTALL MIDWEST GUARDRAIL SYSTEM (MBGS) AT EDGE OF SHOULDER	Warm Spring Creek, Murrieta Creek	N	N	NA	0.15	0	0	WPCP	E	2/15/2018	9/4/2018	3/8/2019	3/27/2020
154	1H060	RIV	074	34.3	45.1	8	MULTI-OBJECTIVE PROJECT TO REHABILITATE PAVEMENT, INSTALL FIBER OPTIC/VEHICLE DETECTION STATIONS AND UPGRADE CURB RAMPS TO MEET ADA STANDARDS	Florida Ave Storm Drain, Boutista Creek, and unnamed blue line streams	N	N	NA	0.45	0	0	WPCP	E	12/2/2019	2/1/2022	10/3/2022	2/1/2024
155	1H140	RIV	060	16.6		8	CONSTRUCT TRAFFIC SIGNAL & LIGHTING	Sunnymead Channel	N	N	NA	0.12	0	0	SWPPP	E	1/31/2018	2/1/2019	10/1/2019	8/3/2020
156	1H160	SBD	010	29.2	29.4	8	INTERCHANGE IMPROVEMENTS	Mission Zanja	N	N	Minimized	2.4	0	0	SWPPP	C	3/27/2019	12/17/2019	6/10/2020	12/2/2020

Table 6-1: District 8 Anticipated Project Development and Construction Schedule

No.	EA	Project Location					Project Description ^{2,3}	Water Bodies Within or Adjacent to Project Limits ⁴	Dredge and Fill Activities (Y/N/NA) ⁵	Other Regional Water Board Permits Required ⁶	Potential and Actual Impacts of Project's Discharge ⁷	Disturbed Soil Area (acres)	Area of New Impervious Surface (acres)	Percentage of New Impervious Surface to Existing Impervious Surface	Description of Construction Controls (SWPPP/WPCP/TBD) ⁸	Post-Construction Treatment Control Type, Quantity ⁹	Anticipated Project Delivery Schedule		Construction Period	
		Co.	Route	Begin PM	End PM	RB ¹											PA&ED Date	PS&E Date	Start Date	End Date
157	1H180	RIV	091	15.1	16.2	8	INTERCHANGE MODIFICATIONS	NA	NA	NA	NA	NA	NA	NA	NA	NA	9/1/2021	4/3/2023	10/2/2023	4/1/2025
158	1H190	RIV	010	106.6	113.8	7	REPLACE EXISTING ROCK SLOPE PROTECTION	Coxcomb ditch, Quartz Ditch, Ghost Ditch, Rollie Ditch, Palen Ditch, Meta Ditch, Oban Ditch, Copa Ditch	Y	Y	Minimized	2.4	0	0	SWPPP	E	10/1/2020	3/16/2022	12/12/2022	10/11/2023
159	1H200	RIV	010	92.9	101.1	7	REPLACE EXISTING ROCK SLOPE PROTECTION	Krume Ditch, Beta Ditch, Tecka Ditch, Irolo Ditch, Ajax Ditch, Shanty Ditch, Union Ditch, Bula Ditch	Y	Y	Minimized	3.5	0	0	SWPPP	E	9/23/2020	3/16/2022	11/4/2022	12/20/2023
160	1H210	RIV	010	120.7	142.7	7	REPLACE EXISTING ROCK SLOPE PROTECTION	Rubble Ditch, Acari Ditch, Beehive Ditch, Arco Ditch, Mud Ditch, Walla Ditch, Gale Ditch, McCoy Wash, Palowalla Ditch	Y	Y	Minimized	2.8	0	0	SWPPP	E	10/1/2020	4/1/2022	12/1/2022	12/1/2023
161	1H271	SBD	015	40.3	40.7	6	PERMANENT RESTORATION OF IRRIGATION AND PLANT MATERIAL	Unnamed tributaries	N	N	NA	0.7	0	0	WPCP	E	4/20/2018	12/3/2018	8/1/2019	3/2/2020
162	1H290	SBD	173	18.7	18.7	6	REPLACE MBGR WITH CONCRETE BARRIER MOUNTED ON 15' HIGH SOLDIER PILE WALL & WIDEN SB SHOULDER FROM 2' TO 4'	Lake Arrowhead	N	N	NA	0.11	0.07	0.5	WPCP	E	11/15/2018	7/2/2019	3/2/2020	5/3/2021
163	1H390	SBD	015	20.6	20.9	8	RECONSTRUCT SB CAJON TRUCK SCALE FACILITY	Cajon Wash	N	N	NA	0.30	0.08	0,8	WPCP	E	2/3/2020	5/3/2021	2/14/2022	6/1/2022
164	1H400	SBD	040	0.4	0.4	6	RECONSTRUCT CHANNEL	Mojave River	Y	Y	Minimized	0.55	0.45	1	SWPPP	E	5/3/2019	4/1/2020	11/2/2020	7/1/2021
165	1H420	RIV	015	42.4	46.2	8	CONVERT IRRIGATION SUPPLIES TO RECYCLED WATER USE	Temescal Wash	N	N	NA	2	0	0	SWPPP	E	8/19/2019	8/16/2021	3/15/2022	1/5/2023
166	1H530	RIV	VAR			6,7,8	REPAIR DETECTION SITES	VAR	N	N	NA	0.1	0	0	WPCP	E	2/13/2018	10/1/2018	6/3/2019	6/1/2020
167	1H620	RIV	091	17.6		8	REPLACE EXISTING MIDWEST GUARDRAIL SYSTEM WITH CONCRETE BARRIER	NA	NA	NA	NA	NA	NA	NA	NA	NA	11/15/2018	2/15/2019	4/16/2019	9/17/2019
168	1H640	SBD	210	26.5		8	WIDEN RAMP	Warm Creek	N	N	N	0.23	0.0	0.0	WPCP	E	7/16/2018	1/15/2019	4/15/2019	9/30/2019
169	1H660	SBD	015	107.4		6	INSTALL ELECTRIC ZEV CHARGING STATIONS NB & SB	Mojave River & Kingston Wash	N	N	Minimized	0.01	0.0	0	WPCP	E	6/4/2018	3/1/2019	11/1/2019	7/1/2020
170	1H750	SBD	018	46.9	47.5	8	INSTALL SIDEWALKS, CURB AND GUTTER AND BIKE LANES IN COMPLIANCE WITH ADA REQUIREMENTS	NA	NA	NA	NA	NA	NA	NA	NA	NA	11/1/2018	3/1/2019	7/1/2019	6/1/2020
171	1H770	SBD	215	4.8	5.8	8	LANE RECONFIGURATION & PAVEMENT WIDENING	Warm Creek, Lytle Creek Urbita Drain & unnamed blue line streams	N	N	Minimized	1.1	0.4	36	SWPPP	C	1/7/2019	10/1/2019	6/1/2020	10/1/2021
172	1H820	SBD	138	15	15.1	8	INSTALL TRAFFIC SIGNALS, REALIGN CAJON BLVD, WIDEN SB OFF-RAMP TO PROVIDE LTL & CONST CURB RAMPS	Cajon Wash	N	N	N	0.6	0.54	0.9	WPCP	E	6/6/2019	7/1/2021	11/4/2021	10/4/2022
173	1H830	SBD	138	0	2.4	6	ADD MINIMUM 4' BUFFER IN MEDIAN AND SHOULDER & MEDIAN RUMBLE STRIPS	Le Montaine Creek & unnamed dry washes	Y	N	Minimize	25	5	20	SWPPP	C	10/1/2020	8/16/2021	2/11/2022	3/10/2023
174	1H910	RIV	074	50	59	8	REPLACE CULVERT AND RESTORE SLOPE AND ROADWAY.	San Jacinto Riv, Strawberry Ck, Coldwater Ck & unnamed blue line streams	N	N	Minimize	0.9	0.06	6.66	SWPPP	C	11/15/2019	12/1/2020	8/3/2021	6/1/2022
175	1H931	SBD	071	0	8.5	8	PREVENTATIVE MAINTENANCE - SLAB REPLACEMENT & SLAB JACKING	NA	NA	NA	NA	NA	NA	NA	NA	NA	7/1/2018	10/1/2018	5/1/2019	12/21/2020
176	1J020	RIV	074	48.8	49.2	8	INSTALL HORIZONTAL DRAINAGE SYSTEM & REPAIR CLOGGED DRAINAGE	Falls, Crystal, Strawberry, Indian Creeks, San Jacinto River & unnamed blue line stream	N	N	N	0.09	-0	0	WPCP	E	12/2/2019	3/1/2021	9/1/2021	11/1/2022

Table 6-1: District 8 Anticipated Project Development and Construction Schedule

No.	EA	Project Location					Project Description ^{2,3}	Water Bodies Within or Adjacent to Project Limits ⁴	Dredge and Fill Activities (Y/N/NA) ⁵	Other Regional Water Board Permits Required ⁶	Potential and Actual Impacts of Project's Discharge ⁷	Disturbed Soil Area (acres)	Area of New Impervious Surface (acres)	Percentage of New Impervious Surface to Existing Impervious Surface	Description of Construction Controls (SWPPP/WPCP/TBD) ⁸	Post-Construction Treatment Control Type, Quantity ⁹	Anticipated Project Delivery Schedule		Construction Period	
		Co.	Route	Begin PM	End PM	RB ¹											PA&ED Date	PS&E Date	Start Date	End Date
177	1J110	RIV	010	12.8	124.2	7	BRIDGE PREVENTATIVE MAINTENANCE	NA	NA	NA	NA	NA	NA	NA	NA	NA	6/29/2018	11/15/2018	4/26/2019	1/20/2020
178	1J120	RIV	015	6.7	51.4	8	BRIDGE PREVENTIVE MAINTENANCE	NA	NA	NA	NA	NA	NA	NA	NA	NA	6/29/2018	12/14/2018	4/26/2019	1/20/2020
179	1J130	SBD	010	11.6	30.9	8	BRIDGE PREVENTIVE MAINTENANCE	NA	NA	NA	NA	NA	NA	NA	NA	NA	6/29/2018	11/1/2018	4/26/2019	1/20/2020
180	1J140	SBD	015	68.7	75.3	6	BRIDGE MAINTENANCE	NA	NA	NA	NA	NA	NA	NA	NA	NA	6/29/2018	11/8/2018	4/26/2019	1/20/2020
181	1J150	SBD	215	4.2	17.3	8	BRIDGE MAINTENANCE	NA	NA	NA	NA	NA	NA	NA	NA	NA	6/29/2018	12/14/2018	4/26/2019	1/20/2020
182	1J200	SBD	015	21.5	22	8	EXTEND DECEL LANE AT RTE 15 SB OFF-RAMP	Cajon Wash	N	N	Minimize	0.32	0.84	262	WPCP	C	6/3/2020	2/4/2021	7/1/2021	1/6/2022
183	1J210	SBD	010	11.6	22.4	8	STRENGTHEN/REPLACE BRIDGES	NA	NA	NA	NA	NA	NA	NA	NA	NA	12/11/2019	3/10/2021	1/5/2022	1/19/2024
184	1J270	SBD	247	0	23	7	PAVEMENT WORK	Chaparrosa Wash, Arrastre Creek & unmaed blue line streams	N	N	N	0.5	5.73	1146	WPCP	C	2/14/2019	6/17/2020	12/8/2020	6/3/2021
185	1J330	SBD	015	160.9	161.5	6	UPGRADE WATER AND WASTEWATER TREATMENT	Mojave River	N	N	N	4.9	0	0	SWPPP	E	12/28/2021	4/28/2023	5/1/2024	7/7/2025
186	1J470	RIV	010	87.96	90.98	7	REPAIR FOUR BRIDGES BY REPLACING THE EXISTING ROCK SLOPE PROTECTION	NA	NA	NA	NA	NA	NA	NA	NA	NA	10/28/2019	3/3/2021	9/3/2021	3/1/2022
187	1J560	RIV	015	3	4.1	9	COLD PLANE & OVERLAY/SLURRY SEAL; DIGOUTS; AND UPGRADE MBGR ON THE EXISTING ASPHALT PAVEMENT	Numerous receiving waters	N	N	N	0.21	0	0	WPCP	C	7/30/2018	9/28/2018	1/21/2019	12/30/2019
188	1J590	SBD	015	16.1	22.3	8	INSTALL MIDWEST GUARDRAIL SYSTEMS	NA	NA	NA	NA	NA	NA	NA	NA	NA	5/1/2020	7/1/2021	1/3/2022	6/2/2022
189	1J630	SBD	215	3.6	6	8	MILL AND OVERLAY PAVEMENT, LOCALIZED DIGOUTS, SIGN PANELS AND LIGHTING REPAIR, REPLACE OVERHEAD SIGN STRUCTURES, UPGRADE CURB RAMPS, IMPROVE ROADSIDE SAFETY.	NA	NA	NA	NA	NA	NA	NA	NA	NA	1/7/2020	7/19/2021	10/27/2021	5/1/2023
190	1J660	SBD	040	27.9	28.8	6	UPGRADE REST AREAS	NA	NA	NA	NA	NA	NA	NA	NA	NA	3/25/2020	7/26/2021	1/14/2022	7/22/2022
191	1J680	RIV	060	13.3	19.15	8	UPGRADE CURB RAMPS AND OTHER ADA RELATED ITEMS TO MEET THE CURRENT ADA STANDARDS	NA	NA	NA	NA	NA	NA	NA	NA	NA	10/28/2019	3/3/2021	8/23/2021	2/15/2022
192	1J720	SBD	040	0	15	6	MILL AND OVERLAY PAVEMENT, LOCALIZED DIGOUTS, CULVERTS REPLACEMENT, SIGN PANELS AND LIGHTING 201.151 (CULVERTS); 201.170 (LIGHTING REHAB); 201.170 (SIGN PANEL REPLACEMENT); 201.235 (ROADSIDE SAFETY IMPROVEMENTS); 201.111 (S	NA	NA	NA	NA	NA	NA	NA	NA	NA	9/26/2019	1/29/2021	7/22/2021	1/27/2022
193	1J780	RIV	074	71.8	92.3	7, 8	MILL AND OVERLAY PAVEMENT, LOCALIZED DIGOUTS, CULVERTS REPLACEMENT, GUARD RAIL REPAIR, UPGRADE CURB RAMPS, IMPROVE ROADSIDE SAFETY. 201.151 (CULVERTS); 201.015 (COLLISION REDUCTION); 201.170 (SIGN PANEL REPLACEMENT); 201.361 (ADA)	NA	NA	NA	NA	NA	NA	NA	NA	NA	1/29/2020	5/28/2021	11/18/2021	5/13/2022
194	1J810	SBD	015	174.3	175.7	6	INSTALL DOUBLE THRIE BEAM IN THE MEDIAN	NA	NA	NA	NA	NA	NA	NA	NA	NA	3/11/2020	7/1/2021	12/20/2021	6/8/2022
195	1J850	SBD	VAR			8	INSTALL CHANGEABLE MESSAGE SIGNS (CMS)	Var	N	N	NA	6	0.6	0	WPCP	E	3/14/2019	7/14/2020	1/6/2021	6/30/2021
196	1J860	SBD	010	2.7	32.7	8	UPGRADE EXISTING CHANGEABLE MESSAGE SIGNS (CMS)	NA	NA	NA	NA	NA	NA	NA	NA	NA	10/28/2019	3/3/2021	9/1/2021	3/21/2023
197	1J880	SBD	015	7.4		8	CONSTRUCT 1.25 MI LONG CLASS 1 BIKE AND PEDESTRIAN TRAIL	NA	NA	NA	NA	NA	NA	NA	NA	NA	9/4/2018	11/15/2018	2/5/2019	10/31/2019
198	1J890	SBD	210	32.2		8	INTERCHANGE IMPROVEMENT (STREAMLINED OVERSIGHT)	NA	NA	NA	NA	NA	NA	NA	NA	NA	9/4/2018	11/15/2018	2/5/2019	10/31/2019
199	1K140	RIV	010	139	155	7	POLYESTER CONCRETE OVERLAY, COLUMN REPAIRS AND PLACEMENT OF APPROACH AND DEPARTURE SLABS	NA	NA	NA	NA	NA	NA	NA	NA	NA	7/31/2019	12/2/2019	5/4/2020	5/4/2020

Table 6-1: District 8 Anticipated Project Development and Construction Schedule

No.	EA	Project Location					Project Description ^{2,3}	Water Bodies Within or Adjacent to Project Limits ⁴	Dredge and Fill Activities (Y/N/NA) ⁵	Other Regional Water Board Permits Required ⁶	Potential and Actual Impacts of Project's Discharge ⁷	Disturbed Soil Area (acres)	Area of New Impervious Surface (acres)	Percentage of New Impervious Surface to Existing Impervious Surface	Description of Construction Controls (SWPPP/WPCP/TBD) ⁸	Post-Construction Treatment Control Type, Quantity ⁹	Anticipated Project Delivery Schedule		Construction Period	
		Co.	Route	Begin PM	End PM	RB ¹											PA&ED Date	PS&E Date	Start Date	End Date
200	1K190	SBD	015	31.1	169.4	6	DECK, APPROACH AND DEPARTURE RESURFACING, SIDE SLOPE REPAIR, REPLACE JOINT SEALS AND REMOVE ASPHALT CONCRETE AND OVERLAY WITH POLYESTER CONCRETE	NA	NA	NA	NA	NA	NA	NA	NA	NA	7/31/2019	12/2/2019	5/4/2020	5/4/2020
201	34143	RIV	060	29	30	8	CONSTRUCT ACCELERATION AND DECELERATION LANES. INSTALL TEMPORARY CONCRETE BARRIER. PLUS DRAINAGE, SIGNING & STRIPING.	Coopers Creek	N	N	NA	2.16	0.84	31.1	WPCP	E	5/6/2013	8/24/2017	2/28/2018	2/28/2020
202	34770	SBD	058	0	12.9	6	CONSTRUCT 4-LANE DIVIDED EXPWY; SR 058/USR 395 IC & RR OH BR	Unnamed dry washes	Y	Y	Minimized	315.3	136.9	100	SWPPP	DPPIA	7/1/2014	6/26/2017	11/17/2017	12/2/2020
203	35556	SBD	015	42.5	46	6	RECONSTRUCT EXISTING "D", "E" ST. & STODDARD WELLS RD IC, WIDEN VICTORVILLE SEPARATION OVERHEAD, CONSTRUCT NEW NB COLLECTOR DISTRIBUTOR BRIDGE OVER "D" & "E" ST., BNSF RAILROAD, WIDEN MOJAVE RIVER BR & CONSTRUCT NEW WEST FRONTAGE RD BR OVER MOJAVE RIVER.	Mojave River	Y	N	Minimized	80	15	26.9	SWPPP	DPPIA	6/30/2008	6/30/2014	11/25/2015	12/3/2019
204	38423	SBD	010	29.4	39.2	8	INSTALL TMS FIELD ELEMENTS	Zanja Creek, Wilson Creek and Wildwood Creek	N	N	NA	0.29	0	0	WPCP	E	6/18/2018	5/1/2019	11/1/2019	9/1/2020
205	38852	SBD	330	32.5	33.7	8	REPLACE BRIDGE RAIL AND APPROACH RAIL	City Creek and East Fork Creek	N	N	NA	0.2	0	0	WPCP	E	6/15/2017	6/4/2018	1/2/2019	2/3/2020
206	43272	RIV	015	5.5	9.6	9	CONSTRUCT 2 LANE NB CD ROAD ONLY (PHASE 2)	NA	NA	NA	NA	NA	NA	NA	NA	NA	1/29/2010	3/2/2020	9/4/2020	9/2/2022
207	4440L	SBD	210	20.3	21.9	8	PROVIDE HWY LANDSCAPING (SEG 11)	Lytle Creek	N	N	NA	2.14	1	1.3	SWPPP	E	5/15/2009	5/14/2012	6/17/2013	9/11/2019
208	44843	RIV	091	18.4	20.7	8	RETAINING WALL AT PACHAPPA - UP RAILROAD TIE-IN	Santa Ana River Reach 3 & 4	N	N	NA	4.5	0	0	SWPPP	E	8/31/2017	8/15/2018	11/2/2018	11/1/2019
209	45210	RIV	010	62.3	63.7	8	CONSTRUCT A NEW INTERCHANGE AT AVENUE 50	Unnamed blue line tributaries	Y	Y	Minimized	30.3	30	100	SWPPP	C	10/30/2017	12/14/2018	6/13/2019	6/11/2021
210	47520	RIV	010	51.7	53.1	7	RECONSTRUCT/ REALIGN EXISTING INTERCHANGE	Coachella Valley Stormwater Channel	N	N	Minimized	59.3	7.11	28.8	SWPPP	C	5/1/2013	6/24/2014	2/10/2015	7/15/2020
211	47642	SBD	215	4	17.8	8	INSTALL FOC BACKBONE, CMS, CCTV, VDS, & ESU	Little Creek, Santa Ana River, San Timoteo Wash, Cable Creek	N	N	NA	3.5	0	0	SWPPP	E	2/1/2019	3/2/2020	10/1/2020	7/1/2021
212	49400	RIV	079	15.8	33.8	8,9	REALIGNMENT TO 4-LANE FACILITY	San Jacinto River, Hemet Channel, Salt Creek, Warm Spring Creek	Y	Y	Minimized	942.8	221	1922	SWPPP	BIOSTP, BIOSWL	10/27/2016	2/26/2020	8/19/2020	1/25/2023

Treatment Control Status Legend	
BMP Device Types:	
BIOSTP	Biofiltration Strips
BIOSWL	Biofiltration Swales
C	Under Consideration
CNTBOX	Gross Solids Removal Devices (Inclined Screen)
DETBAS	Detention Basins
DPPIA	Design Pollution Prevention Infiltration Area*
DWFD	Dry Weather Flow Diversion
E	Exempt
INDBAS	Infiltration Basins*
INDTRE	Infiltration Trench*
LNGTBE	Gross Solids Removal Devices (Linear Radial)
MCTT	Multi-Chambered Treatment Trains
MF-ADS	Austin Sand Filters
MF-DSF	Delaware Sand Filters
Other	Other (specify type)
SA	Stabilization Areas
TRCSND	Traction Sand Traps
WETBAS	Wet Basins

* Water quality volume infiltrates within the right of way. (When this is demonstrated for at least 90% of the WQV, other types of treatment BMPs are not considered unless there is a location-specific requirement.)

Table 6-2 lists the planned maintenance projects that will disturb soil.

Table 6-2: District 8 Anticipated Significant Road Maintenance Activities

No.	Co.	Route	Beg PM	End PM	Regional Board	Description	Water Bodies Affected ¹⁰	Other Regional Water Board Permits Required ¹¹	Potential and Actual Impacts of Project's Discharge ¹²	Disturbed Soil Area (acres)	Area of New Impervious Surface (acres)	Percentage of New Impervious Surface to Existing Impervious Surface	Description of Construction Controls (SWPPP/WPCP/TBD/NA) ¹³	Post-Construction Treatment Control Type, Quantity ¹⁴	Start Date	Completion Date
No planned road maintenance activities anticipated.																

Treatment Control Status Legend	
BMP Device Types:	
BIOSTP	Biofiltration Strips
BIOSWL	Biofiltration Swales
C	Under Consideration
CNTBOX	Gross Solids Removal Devices (Inclined Screen)
DETBAS	Detention Basins
DPPIA	Design Pollution Prevention Infiltration Area*
DWFD	Dry Weather Flow Diversion
E	Exempt
INDBAS	Infiltration Basins*
INDTRE	Infiltration Trench*
LNGTBE	Gross Solids Removal Devices (Linear Radial)
MCTT	Multi-Chambered Treatment Trains
MF-ADS	Austin Sand Filters
MF-DSF	Delaware Sand Filters
Other	Other (specify type)
SA	Stabilization Areas
TRCSND	Traction Sand Traps
WETBAS	Wet Basins

* Water quality volume infiltrates within the right of way. (When this is demonstrated for at least 90% of the WQV, other types of treatment BMPs are not considered unless there is a location-specific requirement.)

¹⁰ Receiving waters within or adjacent to maintenance activity designated as “303(d) (constituent type).” Activity adjacent to Drinking Water Reservoir or Ground Water Recharge Facilities designated as “DW.”

¹¹ Regional Water Board Permits required other than Construction General Permit, such as Clean Water Act Section 401 water quality certification, Waiver of Discharge Requirements, Dewatering Permits, Bridge Painting WDRs, etc.

¹² This information may come from the Water Quality Assessment Report prepared for each project, a Water Quality Technical Memorandum, or other document that evaluates the water quality impacts of a project.

¹³ A description of the Construction Controls is available in the project’s Storm Water Pollution Prevention Plan (SWPPP), Water Pollution Control Plan (WPCP), is To Be Determined (TBD) if the Disturbed Soil Area is unavailable, or is Not Applicable (NA) because there is no Disturbed Soil Area associated with the project.

¹⁴ Treatment Control Status identified by: device type/number of devices, exempt (“E”), or under consideration (“C”). See Treatment Control Status Legend below for device type abbreviations.

This page was intentionally left blank.

Table 6-3 lists the District's planned monitoring activities.

Table 6-3: District 8 Monitoring Activities

Statewide Monitoring Program Activities
<p>The District plans to:</p> <ul style="list-style-type: none"> • Continue Lake Elsinore/Canyon Lake water quality monitoring through the TMDL Task Force. • Work with each RWQCB within its jurisdiction, in conjunction with the SWRCB and the HQ Division of Environmental Analysis, to develop monitoring plans for other applicable TMDLs in which the District is named, as appropriate for Phase I or Phase II. Review and approve sampling and analysis plans in construction for CGP Risk Level 2 and 3 projects. • Inspect maintenance activities.
<i>ASBS Core Monitoring Sites</i>
<ul style="list-style-type: none"> • District sites include the following: <ul style="list-style-type: none"> ○ None
<i>ASBS Ocean Receiving Water and Reference Monitoring Sites</i>
<ul style="list-style-type: none"> • District sites include the following: <ul style="list-style-type: none"> ○ None

This page was intentionally left blank.

7 Region-Specific Activities

Section 7 of the DWP identifies the applicable region-specific activities that District 8 has planned for the fiscal year 2019-20 to comply with Attachment V of the Conformed NPDES Permit.

Region-Specific requirements are not applicable to District 8.

This page was intentionally left blank.

8 DWP Noncompliance and Improvements

Section 8 of the DWP identifies the deviations that occurred from the prior DWP that resulted or will result in noncompliance with the Conformed NPDES Permit or SWMP. In addition, it describes the improvements that were performed in response to the incidents of noncompliance. Table 8-1 identifies those incidents of noncompliance and the resulting improvements that District 8 implemented to address each incident.

Table 8-1: District 8 Prior DWP Noncompliance Incidents and Improvements

Summary of Noncompliance Incidents	Summary of Improvements
<p>The fiscal year 2018-2019 DWP identifies two incidents that were recognized as administrative non-compliance incidents that were not following the Caltrans Encroachment Permits Manual, Section 406 or the Caltrans MS4 permit.</p> <p><u>Incident #1</u> In the 2016-2017 fiscal year, there were about six permits that had administrative non-compliance incidents that were not following the Caltrans Encroachment Permits Manual, Section 406.</p> <p><u>Incident #2</u> On December 9, 2016, District 8 received notice from the Santa Ana RWQCB indicating that the 2017-2018 DWP was rejected due to noncompliance under Provision E.3.b of the Caltrans MS4 Permit (Order 2012-0011-DWQ, NPDES Permit No. CAS 000003).</p>	<p><u>Resolution #1</u> Informed the applicants to correct the non-compliance incidents and prepare the appropriate storm water documents that conform to Caltrans Encroachment Permits Manual, Section 406.</p> <p><u>Resolution #2</u> In a letter dated January 23, 2017, Caltrans responded to the Santa Ana RWQCB that the draft DWP would be sent to RWQCBs for their review and comment prior to formal submittal to SWRCB. The District/HQs will work together to provide drafts of the DWQ to the four RWQCBs in District 8 prior to submittal to the SWRCB.</p>

This page was intentionally left blank.