

**California Department of Transportation  
Stormwater Management Program  
District 10 Work Plan**

Fiscal Year

**2019-2020**

CTSW-RT-18-379.06.2



California Department of Transportation  
Division of Environmental Analysis  
Stormwater Management Program  
1976 E. Dr. Martin Luther King, Jr. Blvd.  
Stockton, CA 95206  
<http://www.dot.ca.gov/hq/env/stormwater>

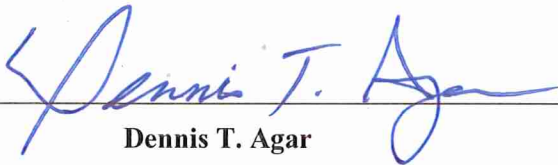
**October 1, 2018**



For individuals with sensory disabilities, this document is available in alternate formats upon request. Please call or write to the Stormwater Liaison, Caltrans Division of Environmental Analysis, MS-27, P.O. Box 942874, Sacramento, CA 94274-0001, (916) 653-8896 Voice, or dial 711 to use a relay service.

**California Department of Transportation**  
**District 10 Certification**  
**District Work Plan 2019-20**

I certify under penalty of law that this document and all attachments were prepared under my direction or supervision in accordance with a system designed to assure that qualified personnel properly gather and evaluate the information submitted. Based on my inquiry of the person or persons who manage the system, or those persons directly responsible for gathering the information, the information submitted is to the best of my knowledge and belief, true, accurate, and complete. I am aware that there are significant penalties for submitting false information, including the possibility of fine and imprisonment of knowing violations. [40 CFR 122.22(d)]



---

**Dennis T. Agar**

**District 10 Director**

9/21/18

**Date**

This page was intentionally left blank.

# Table of Contents

<b>1</b>	<b>Introduction .....</b>	<b>1-1</b>
<b>2</b>	<b>District Personnel and Responsibilities .....</b>	<b>2-1</b>
<b>3</b>	<b>District Facilities and Water Bodies .....</b>	<b>3-1</b>
<b>4</b>	<b>Drinking Water Reservoirs and Recharge Facilities.....</b>	<b>4-1</b>
<b>5</b>	<b>Slopes Prone to Erosion .....</b>	<b>5-1</b>
<b>6</b>	<b>Implementation.....</b>	<b>6-1</b>
<b>7</b>	<b>Region-Specific Activities .....</b>	<b>7-1</b>
<b>8</b>	<b>DWP Noncompliance and Improvements .....</b>	<b>8-1</b>

## Figures

Figure 2-1: District 10 Organizational Chart .....	2-11
Figure 5-1: District 10 2018 Areas Prone to Erosion.....	5-3

## Tables

Table 2-1: District 10 Stormwater Personnel and Responsibilities.....	2-8
Table 2-2: District 10 Signatory Authority for Key Documents.....	2-9
Table 4-1: District 10 Drinking Water Reservoirs and Recharge Facilities .....	4-1
Table 5-1: District 10 Inventory of Road Segments Prone to Erosion.....	5-1
Table 6-1: District 10 Anticipated Project Development and Construction Schedule.....	6-3
Table 6-2: District 10 Anticipated Significant Road Maintenance Activities .....	6-20
Table 6-3: District 10 Monitoring Activities .....	6-21

This page was intentionally left blank.

## General Information about the District Work Plan

The District Work Plans (DWPs) describe the organization of each California Department of Transportation (Caltrans) District's Stormwater Management Program (SWMP) and outline the planned stormwater activities for the upcoming fiscal year. They are prepared and submitted on the 1<sup>st</sup> of October each year. Since the DWP is District-specific, each Regional Water Quality Control Board (RWQCB or Regional Board) is provided a copy of the DWPs relevant to their jurisdiction.

This DWP presents information about District 10's water bodies, Best Management Practices (BMPs), and monitoring programs. It describes how the District will specifically implement the requirements of the SWMP during fiscal year 2019-20. Implementation activities will be conducted in accordance with the procedures presented in the SWMP. In addition, this DWP fulfills Provision E.3.b of the *National Pollutant Discharge Elimination System (NPDES) Statewide Storm Water Permit Waste Discharge Requirements (WDRs) for State of California Department of Transportation* (Order Number 2012-0011-DWQ, NPDES Number CAS000003, Effective July 1, 2013) (NPDES Permit). The NPDES Permit was amended by Orders WQ 2014-0006-EXEC (January 17, 2014), WQ 2014-0077-DWQ (May 20, 2014), and WQ 2015-0036-EXEC (April 7, 2015). A conformed NPDES Permit was issued on April 7, 2015 (Conformed NPDES Permit), available on the California State Water Resources Control Board's (SWRCB) website:

[http://www.waterboards.ca.gov/board\\_decisions/adopted\\_orders/water\\_quality/2012/wq2012\\_0011\\_dwq\\_conformed\\_signed.pdf](http://www.waterboards.ca.gov/board_decisions/adopted_orders/water_quality/2012/wq2012_0011_dwq_conformed_signed.pdf)

The NPDES Permit was further amended by Order WQ 2017-0026-EXEC on November 27, 2017. This permit amendment describes the primary modifications to several Areas of Special Biological Significance (ASBS) sampling locations and incorporation of compliance units crediting due to the SWRCB's adoption of the trash provisions on April 7, 2015 (effective on December 3, 2015).

The DWP's eight sections describe how the District plans to implement the SWMP during the upcoming fiscal year. Section 1 introduces the DWP, describes its organizational structure, and identifies the key goals and commitments made by the District for the upcoming fiscal year. Section 2 describes the personnel with stormwater operations responsibilities in the District. In Section 3, the District's facilities are listed and categorized by type and location. Section 4 describes and identifies the high-risk locations where spills from the District's owned rights-of-way, roadways or facilities can discharge directly to a drinking water reservoir or ground water recharge facility. In Section 5, the District's road segments that are prone to erosion are identified. Section 6 summarizes the District's implementation activities, including projects that will be in the design and construction phases during the fiscal year, maintenance projects, and planned stormwater monitoring activities. Section 7 identifies the planned region-specific activities (if applicable) to address the requirements listed in Attachment V of the Caltrans Statewide NPDES Permit. Section 8 identifies deviations that occurred from the prior DWP that resulted or will result in noncompliance with the Caltrans Statewide NPDES Permit or SWMP and describes improvements performed in response to the incidents of noncompliance.

## Central Region and District Goals and Commitments

The District, under the umbrella of the Central Region, will implement at the District level the Statewide Stormwater Management Plan (SWMP) and use current Stormwater Quality Handbooks and Guidance to ensure that every project and all construction and maintenance activities implement the appropriate combination of temporary and permanent BMPs. The District's stormwater program will continue compliance monitoring practices, BMP implementation, stormwater documentation, tracking and reporting, and partnering with various local and stormwater agencies. The District will continue to partner

with the local municipal separate storm sewer systems (MS4s), including the City of Stockton, City of Modesto, and San Joaquin County, in an effort to further public education and outreach for compliance with water quality law.

The District will continue to participate with the Division of Environmental Analysis to evaluate and implement necessary process improvements to the stormwater program. The District will continue to implement the requirements of the Construction General Permit, State Water Board Order No. 2009-0009-DWQ, including electronic submittals of Project Registration Documents via the Stormwater Multi-Application Report Tracking System (SMARTS).

The District will evaluate training needs and comply with any regulatory or Policy changes in the coming year, including implementation of the new Asset Management Program.

The District will endeavor to explore partnership opportunities to contribute funding for projects centered in the Sacramento-San Joaquin River Delta Estuary aimed towards the goal of reducing concentrations of Methyl Mercury in fish tissue in fulfilling its assigned annual obligation of twenty-two Compliance Units as part of the Total Maximum Daily Load Requirements of Attachment IV of the Caltrans Statewide MS4 NPDES Permit, and to seek approval of Cooperative Agreements for these projects from the Central Valley Regional Water Quality Control Board.

The District will participate in Central Region Environmental's NPDES/Stormwater Branch Stormwater Advisory Team Meetings as a key SWAT member, assembled with representatives from the District's Division of Planning and Local Assistance, Design, Maintenance, along with SWAT members representing Central Region's Construction, Landscape Architecture, Right-of-Way, Hydraulics, and Encroachment Permits Offices, to further the implementation and compliance of the SWMP and stormwater policy and process.



## **2 District Personnel and Responsibilities**

---

Section 2 of the DWP describes positions, addresses, and telephone numbers of personnel with responsibilities for stormwater operations within the District. This section also identifies positions having signatory authority for various notifications or documents required for submittal by a District (e.g., Project Registration Documents, including Notices of Intents or NOIs).

### **Central Region Environmental NPDES Branch Manager**

The Central Region Environmental NPDES Branch Manager (Central Region Environmental NPDES Manager) is the manager in charge of all stormwater activities in Districts 5, 6, and 10. The Central Region Environmental NPDES Manager is responsible for establishing an effective stormwater management program, and communicating, collaborating, and coordinating stormwater activities with Headquarters and other District Program Managers (Division Chiefs). The Central Region NPDES Manager provides support, direction, and guidance to the District Stormwater Coordinator (DSWC). The responsibilities of the Central Region NPDES Manager include:

- Coordinating Central Region operations regarding stormwater.
- Coordinating District efforts within the Central Region to achieve compliance with the Caltrans Statewide NPDES Permit and SWMP.
- Serving as a resource to the Central Region District Directors on NPDES/stormwater quality issues.
- Serving as the ultimate signatory authority in the Region for all compliance documents (Stormwater Data Report) and commitments regarding stormwater management. Further coordination will occur regarding the transfer of Signatory authority to Central Region Construction staff for NOI filing via SMARTS.
- Serving as the primary liaison and single point of contact on stormwater and waste discharge issues between the Central Region Districts and Headquarters, the State Water Resources Control Board (SWRCB) and Regional Boards, U.S. Environmental Protection Agency, and other agencies.
- Assisting with the preparation and review of the Rapid Stream Stability Assessment documentation for projects subject to that requirement under the 2012 Caltrans Statewide NPDES Permit.
- Ensuring the accuracy and adequacy of the stormwater workload allocations for each fiscal year.
- Coordinating and tracking resource distributions, workloads, and projects within the Central Region.
- Providing guidance and direction necessary to develop strategies for addressing regulations and mandates on stormwater waste discharges set forth by federal, state, and local regulatory agencies.
- Reconciling disputes and disagreements on policies, activities, assignments, and responsibilities regarding stormwater issues.
- Continuing to assist and support Construction staff with SMARTS input.
- Establishing impartial and equitable decisions that benefit Caltrans in attaining the objectives of the SWMP.

- Acting as the District Program Advisor for the 335 SHOPP Program. The 335 SHOPP Program funds projects to comply with Total Maximum Daily Loads (TMDLs) and other water quality orders. Assist in the transition from the “standalone” project model to the new Asset Management Program.
- Acting as an Approved Signatory, designated by the Duly Authorized Representative (Central Region District Directors), for electronic report and data submittals in SMARTS for the Caltrans Statewide MS4 NPDES Permit.

### **District NPDES Stormwater Coordinator**

The Central Region Environmental Branch’s NPDES Stormwater Coordinator assigned to District 10 (DSWC) is the principal person responsible for the day-to-day implementation of the Caltrans Statewide MS4 NPDES Permit and SWMP at the District level. Under the general direction of the Central Region Environmental NPDES Branch Manager, the DSWC is responsible for identifying issues and developing recommendations related to stormwater quality, regulated wastes, and other environmental issues that affect their respective District. The specific stormwater tasks for which the DSWC is responsible include the following:

- With the assistance of the Central Region Environmental NPDES Branch Manager, providing guidance and direction for the preparation, development, and implementation of a comprehensive District SWMP, as described in the DWP.
- Providing oversight of activities related to notification procedures for reuse of soil containing lead in accordance with variances issued by the Department of Toxic Substances Control (DTSC).
- Assisting the Central Region and District functional units in prioritizing, monitoring, tracking, and evaluating stormwater resources, activities, and operations.
- Implementing a quality assurance and quality control program for monitoring the activities of the District functional units, in order to ensure that the conditions of the Caltrans Statewide NPDES Permit, SWMP and the DWP are implemented properly.
- Representing the District at the Stormwater Advisory Teams (SWATs) identified in the SWMP.
- Monitoring and evaluating the stormwater activities and procedures of municipalities, developers, and other agencies.
- Working as leader and chairperson of the District Stormwater Functional Team Committee.
- Assisting with the determination and evaluation of stormwater impacts during California Environmental Quality Act and/or National Environmental Policy Act (CEQA/NEPA) screening.
- Evaluating and recommending permanent control and treatment measures to address project stormwater impacts.
- Assisting with the identification of costs related to water pollution control, non-stormwater discharges, and waste management in program documents.
- Assisting with the development of new specifications, details, and guidance materials related to non-stormwater discharges and waste management.
- Assisting with the preparation of contract specifications and estimates to address development of Stormwater Pollution Prevention Plans (SWPPPs)/Water Pollution Control Programs (WPCPs).

- Assisting with the preparation and review of the Rapid Stream Stability Assessment documentation for projects subject to that requirement under the Caltrans Statewide NPDES Permit.
- Assisting with the preparation of the contract Project Specifications and Estimates (PS&E) requiring permanent stormwater control measures to improve or minimize water quality impacts.
- Determining project Risk Level during the project planning, project approval and environmental document, and PS&E phases.
- Assisting the District Encroachment Permits Branch in evaluating water quality impacts and requirements of encroachment permit applications.
- Assisting with the development of training programs, specifically those attributed to Design staff.
- Coordinating the public outreach and education effort for the District with the assistance of the Central Region Environmental NPDES Branch Manager.

### **Central Region D10 Design Stormwater Coordinator**

Central Region Design Stormwater Coordinators in Branches located in District 10 are the main point of contact for Project Engineers for project related stormwater questions and are responsible to support the project design compliance evaluation process. The Design Stormwater Coordinators assist Project Engineers in their Branch in formulating Stormwater Data Reports utilizing templates tailored to the District by the Central Region Environmental NPDES/SW Branch NPDES Stormwater Coordinator assigned to District 10. The Design Stormwater Coordinator provides signature on the front cover of the Stormwater Data Report at the conclusion of the PID, the PA/ED, and the PS&E phases. The Design Stormwater Coordinator, with assistance from the Central Region Environmental NPDES Stormwater coordinator assigned to the District, provides input to the PE on the following issues:

- Preparing of a PID and Project Report during the project planning phase, including evaluation and selection of potential permanent treatment and or significant temporary BMPs that may be incorporated into a project.
- Preparing of PS&E documents. This includes the selection and design of BMPs.
- Determining whether the project is subject to the Construction General Permit (SWPPP) or the Caltrans Statewide MS4 NPDES Permit (WPCP).
- Preparing the design information necessary to enter into the Stormwater Multiple Application Report Tracking System (SMARTS) to support project construction.

### **Environmental Water Quality Specialist**

The Environmental Division provides oversight and coordination activities on water quality issues throughout the life of the project from the Project Initiation Document phase through the Operation and Maintenance phase. In order to enhance project delivery and increase efficiency, the Environmental Water Quality Specialist (EWQS) will consult with the NPDES/Stormwater Branch on project activities which are related to the NPDES Permit, potential enforcement actions and stormwater quality issues. The EWQS will prepare or provide review and comment on the following issues:

- Water Quality section of the Environmental Scoping document.
- Water Quality Reports to be included in environmental documents.

## **Maintenance Stormwater Coordinator**

The Maintenance Stormwater Coordinator (MSWC) is responsible for communicating with the Deputy District Director of Maintenance and Maintenance Operation Team (MOT) regarding the proper implementation of maintenance-related sections of the SWMP and the DWP. The MSWC reports all stormwater-related maintenance activities to the Deputy District Director of Maintenance, coordinates stormwater training for maintenance staff, as well as overseeing inspection of maintenance facilities and operations relative to Permit compliance. The MSWC is chairperson of the MOT that meets routinely to discuss water quality issues, updates the Maintenance portion of the DWP, and compiles information for the Annual Reports, as well as the SWMP. The MSWC serves as the conduit for information between the Deputy District Director of Maintenance, Headquarters Maintenance Program (especially Maintenance SWAT identified in the SWMP) and the maintenance field offices. The MSWC may also be delegated the signatory authority on District stormwater documents, specifically the Stormwater Data Report.

## **Construction Stormwater Coordinator**

The Construction Stormwater Coordinator (CSWC), under the direction of their Construction Engineer (Senior) and the Central Region Construction Division Chief, provide technical assistance to Resident Engineers relating to Caltrans Statewide MS4 NPDES Permit, Construction General NPDES Stormwater Permit and Caltrans Stormwater Guidance Handbooks. District-CSWC is responsible for:

- Caltrans' compliance with the construction stormwater requirements of the Caltrans Statewide MS4 NPDES Permit, the Construction General Permit, and Caltrans Stormwater Manuals by coordinating with project staff during the Pre-Job meeting, reviewing stormwater data report submittals, and periodic review of construction sites as a representative of the District Construction Division Chief.
- Reviewing a project's Construction Compliance Evaluation Plan (CCEP), reviewing CCEP Action Plans (if required), and coordinating the exchange of information between Headquarters Water Quality, Headquarters Construction, District and Regional Stormwater/NPDES Units as required.

Other specific tasks for which the CSWC coordinates with other Caltrans units include:

- Serving as the focal point of contact with the District NPDES Stormwater Coordinators for all construction stormwater issues during the construction phase.
- Identifying and coordinating stormwater training for Construction staff.
- Working with the Central Region NPDES/Stormwater Unit, District NPDES Coordinator and various Project Engineers to review Stormwater Data Reports and ensure that project plans and specifications identify and adequately fund stormwater needs for each project.
- Tracking critical compliance milestones that occur before and during the course of construction.
- Assisting with final project closeout inspections for completion of NPDES/Stormwater components.
- Assisting the Resident Engineer in the submittal of the Notice of Termination for SWPPP projects.
- As requested, reviewing SWPPP/WPCP submittals.
- Assisting with data entry in SMARTS.
- Submitting reports as requested to the District or Regional NPDES Coordinator.
- Coordinating 90% walk-through with Maintenance.

- Reviewing and providing oversight of Caltrans SWPPP projects, and coordinating with the Construction Division Chief about project compliance matters.
- Assisting Engineers with reporting Notices of Potential Incidents to the District NPDES Coordinator.
- Assisting Engineers in evaluating water pollution control measures in the field.
- Assisting Engineers with Illegal Connection/Illicit Discharge (IC/ID) Reports for Construction to the District NPDES Coordinator and other units (Hazardous Materials Management or Hazardous Waste Management), as needed.
- Representing Construction at the District SWAT meetings.
- Providing input on the Annual Report.
- Participating in the Construction SWAT defined in the SWMP.

The CSWC assists with enforcement actions or corrections requested by the Regional Boards are implemented and documented promptly. The CSWC also serves as the primary conduit for information during the construction phase for the District, Headquarters Construction, and construction field staff.

### **Right-of-Way Stormwater Coordinator**

The Central Region Right-of-Way (ROW) Stormwater Coordinator serves District 5, 6, and 10 and is responsible for the following tasks:

- Attending all Stormwater Functional Team meetings to report on ROW activities.
- Ensuring that stormwater training is available to ROW staff with property inspection responsibilities.
- Ensuring that regular property inspections include stormwater inspections.
- Documenting the results of inspections and corrective actions.
- Preparing a summary of completed stormwater property inspections for use in Annual Reports.
- Disseminating information and answering questions regarding Caltrans stormwater policy to all ROW staff involved in stormwater inspections.
- Notifying the DSWC of discharges or situations that appear to be in violation of the Caltrans Statewide MS4 NPDES Permit, SWMP or DWP.
- Reporting instances where ROW may conduct construction activities that require the development of a SWPPP and related notification.

### **Engineering Services Hydraulics Representative**

The Engineering Services Hydraulics Representative (HR) is a member of the Functional Stormwater Committee responsible for providing information on permanent control measures, except those related to erosion control, which are being planned, designed, and implemented in projects. The HR ensures that the management and staff of the Hydraulics Branch are knowledgeable about the DWP, water pollution control efforts, and the requirements for minimizing or preventing pollutants from being present in discharges. The HR ensures that the design processes used by the Hydraulics Branch are consistent with the DWP and the SWMP, especially those processes related to the evaluation, selection, and design of permanent control and treatment control measures. The HR assists Hydraulics staff with preparation and review of the Rapid Stream Stability Assessment documentation for projects subject to that requirement under the Caltrans Statewide MS4 NPDES Permit.

## **Public Affairs Coordinator**

The Public Information Officer (PIO) is a member of the Functional Stormwater Committee responsible for maintaining an effective public information program as specified in this DWP and any elements of the SWMP that are attributed to the District. The PIO Coordinator is directly responsible for the following:

- Distributing the District's stormwater pamphlet;
- Developing and distributing public service announcements regarding stormwater; and
- Ensuring that stormwater information is available at public events, such as county fairs, for which Caltrans may be a participant.

## **Encroachment Permits Stormwater Coordinator**

The Encroachment Permits Stormwater Coordinator (Permits Coordinator) is a member of the Stormwater Functional Team responsible for ensuring that the District's Office of Permits complies with the Caltrans Statewide MS4 NPDES Permit, the Construction General NPDES Permit, the SWMP and DWP. The Office of Permits is responsible for issuing permits to local agencies, utility companies, and others (i.e., film production companies, marathon sponsors, etc.) that desire to encroach into Caltrans' ROW for construction, maintenance or other activities consistent with their organization. The Permits Coordinator ensures that all permits issued comply with the appropriate NPDES Permit in a manner consistent with the Maintenance, Construction, and Design requirements. The following are tasks performed by the Permits Coordinator:

- Reviewing ongoing Caltrans Encroachment Permit applications to determine whether Stormwater BMPs (design pollution prevention, permanent treatment, and temporary construction site BMPs), Permanent Erosion Control Plans, and Caltrans SWPPP or WPCP are provided.
- Working closely and having frequent dialog with Headquarters Encroachment Permits Office, District and Central Region NPDES, Central Region Construction, District Maintenance Stormwater Coordinators, as well as District Landscape Architect and Hydraulics Branches, on stormwater-related issues.
- Keeping track of all pending as well as issued District Encroachment Permit Projects that have stormwater related activities.
- Reviewing SWPPPs and WPCPs for compliance with the current Caltrans standards and to ensure their consistency and compliance with the Construction General Permit.
- Attending and participating in stormwater meetings conducted by Headquarters Encroachment Permits Office, District NPDES (Stormwater Functional Meetings), and Caltrans Headquarters CSWAT/EPswat committees.
- Submitting reports for either the Caltrans SWMP or Headquarters Encroachment Permits Office.
- Assisting District Encroachment Permit Inspectors in resolving stormwater issues related to active or new District Encroachment Permit projects.
- Conducting stormwater field inspections of authorized District Encroachment Permit construction work.
- Documenting and submitting stormwater compliance inspections of authorized District Encroachment Permit projects into the statewide Encroachment Permits database.
- Contacting District Maintenance and NPDES coordinators if IC/ID activities or operations are discovered during stormwater compliance site inspections.

- Assisting NPDES Branch during IC/ID investigations.
- Assisting the CSWAT/EPSWAT in updating stormwater guidance or training courses.
- Tracking and identifying stormwater training needs for the District Encroachment Permits staff.

## **Landscape Architect**

The District's Landscape Architecture Office facilitates incorporating water pollution and erosion control recommendations into the planning, design, and construction of all projects in District 10. In addition, the District Landscape Architect provides field support to Construction, Maintenance, and Encroachment Permits when requested.

The specific stormwater tasks for which the Landscape Architect is responsible include the following:

- Determining and evaluating stormwater impacts during CEQA/NEPA screening.
- Evaluating and recommending permanent control and treatment control measures to address a project's stormwater impacts.
- Identifying costs related to water pollution and erosion control in program documents.
- Developing new specifications, details, and guidance materials related to erosion and sediment control.
- Preparing contract PS&E to address erosion and sediment controls for projects.
- Preparing or assisting in the preparation of the contract PS&E requiring permanent control and treatment control measures to improve or minimize water quality impacts on projects.
- Preparing, as required, a Revised Universal Soil Loss Equation, Version 2 (RUSLE2) report for use by Construction for terminating coverage under the Construction General Permit.
- Ensuring that locations where soil containing lead is reused meet the variances issued by DTSC and are not susceptible to erosion and stabilized as a part of project design.
- Conducting studies to improve water quality objectives on highway planting projects.
- Assisting in the development of training programs, especially programs for Landscape Architecture staff.
- Participating in the Design SWAT identified in the SWMP.

The District Landscape Architect is a liaison with the Headquarters Landscape Architecture Program to develop, submit, review, and obtain approval for all specifications and details related to erosion and sediment control. The District Landscape Architect also coordinates with Headquarters' Design Program to obtain approval or concurrence on water pollution control specifications related to erosion and sediment control. Furthermore, the District Landscape Architect must approve slope designs steeper than 4:1 in order to ensure compliance with regulations addressing stormwater pollution contained in the federal CWA.

Table 2-1 lists staff members responsible for implementing the Stormwater Program.

**Table 2-1: District 10 Stormwater Personnel and Responsibilities**

<b>Staff Name</b>	<b>Title</b>	<b>Phone No.</b>	<b>E-mail</b>	<b>Responsibility</b>
James Espinosa	Central Region Environmental NPDES Stormwater Manager	(559) 243-8007	james_espinosa@dot.ca.gov	Primary contact for all stormwater issues. Oversees all NPDES office employees within the Central Region Districts (District 5, 6, and 10).
Ethan Heilman	District 10 NPDES Stormwater Coordinator	(209) 941-1918	ethan_heilman@dot.ca.gov	Contact for District 10 NPDES stormwater issues.
David Troop	District 10 Construction Stormwater Coordinator Approved Signatory and Data Submitter for CGP coverage	(209) 470-8795	david.troop@dot.ca.gov	Contact for Construction-related stormwater issues during the construction phase of projects.
Manuel Astacio	District 10 Maintenance Stormwater Coordinator	(209) 948-3724	Manuel.Astacio@dot.ca.gov	Primary contact for maintenance-related stormwater issues.
Anthony Lertora	District 10 Maintenance Stormwater Coordinator	(209) 948-3725	Anthony.Lertora@dot.ca.gov	Primary contact for maintenance-related stormwater issues.
Nancy Mazzeo	District 10 Right-of-Way Lease Agent Stormwater Coordinator	(209) 948-7915	nancy.mazzeo@dot.ca.gov	Contact for leased properties stormwater issues
Dan Shafer	District 10 Encroachment Permits Stormwater Coordinator	(209) 948-7269	dan.shafer@dot.ca.gov	Primary contact for encroachment permit-related stormwater issues.
Michelle Molina Hernandez	Central Region Right-of-Way Stormwater Coordinator	(559) 445-6248	michelle.molina-hernandez@dot.ca.gov	Primary contact for Right-of-Way demolition issues.
Sam Wong	Hydraulics Manager	(559) 243-3507	sam.wong@dot.ca.gov	Primary contact for hydraulic related issues.
Brad Cole	District 10 Landscape Architecture	(559) 230-3134	brad.cole@dot.ca.gov	Primary contact for all District 10 Landscape-related stormwater issues.
Michelle Molina Hernandez	Central Region Air Space Stormwater Coordinator	(559) 445-6248	michelle.molina-hernandez@dot.ca.gov	Primary contact for stormwater-related issues as it pertains to air-space leases.

Table 2-2 lists individuals authorized to sign the documents, reports, and other information submitted by the District to either the SWRCB or the RWQCB(s). These individuals/positions may delegate authorization to their staff to sign various documents and reports required for implementation of the Stormwater Program. It also includes delegation of signatory authority for key Caltrans Statewide MS4 NPDES Permit and SWMP required documents.



**Table 2-2: District 10 Signatory Authority for Key Documents**

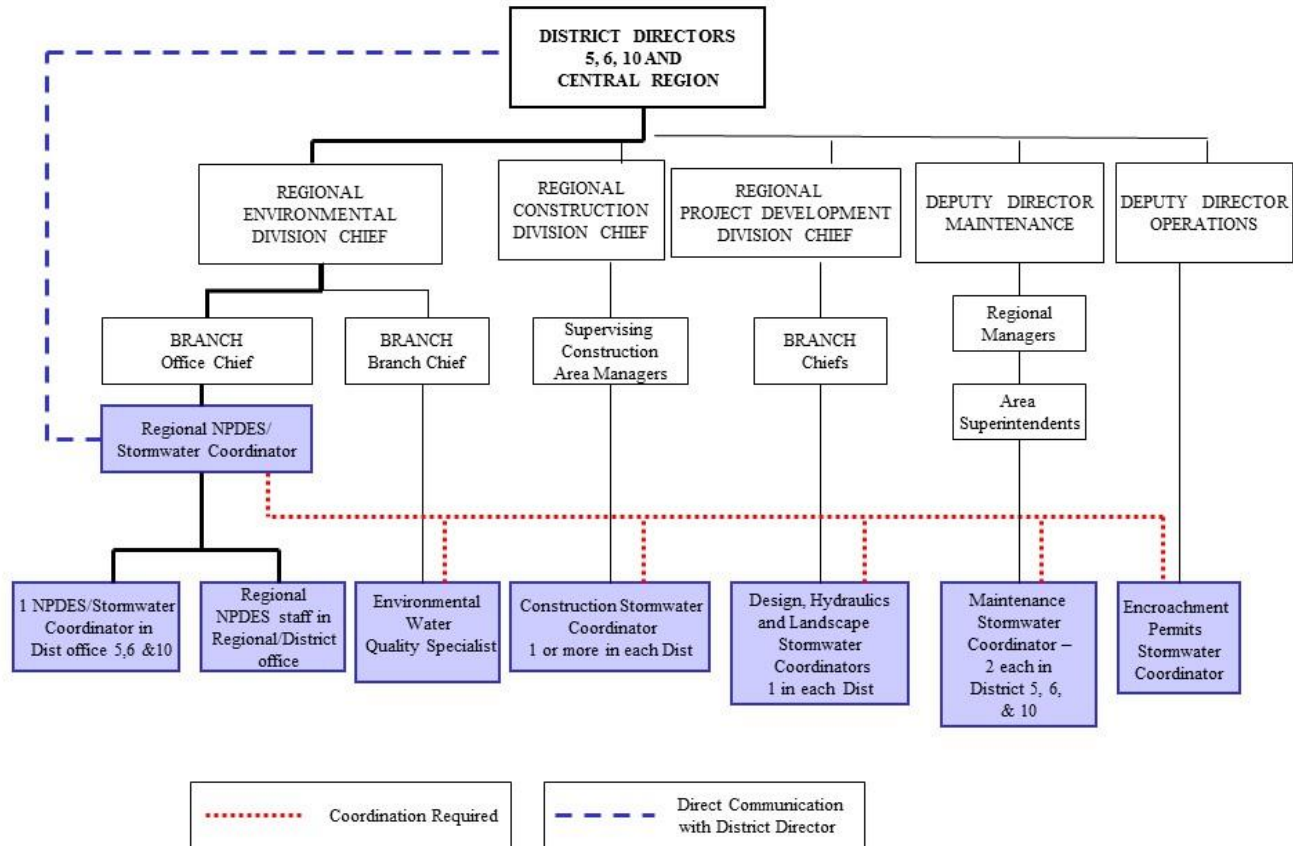
<b>Position or Individual</b>	<b>Phone No.</b>	<b>E-mail</b>	<b>Documents Authorized for Signatures</b>
District Director	(209) 949-7943	dennis_agar@dot.ca.gov	All District Documents
Central Region Environmental NPDES SW Manager	(559) 243-8007	james.espinosa@dot.ca.gov	All District Documents except District Work Plan
District NPDES SWC	(209) 941-1918	ethan.heilman@dot.ca.gov	As delegated by the Central Region NPDES SWC
Resident Engineer	Various	Various	SWPPP, Notice of Intent (NOI), Notice of Termination (NOT), Notice and Non-Compliance Reporting, Discharge or threat of Discharge Notification, Incident Report Form
Encroachment Permits SWC	(209) 948-7269	dan.shafer@dot.ca.gov	Notice and Non-Compliance Reporting, Discharge or Threat of Discharge Notification, Report of Illegal Connection/Illicit Discharge (IC/ID), Incident Report Form
Hazardous Waste Coordinator	(559) 243-8157	juergen.vespermann@dot.ca.gov	Notice of Soil Reuse with Aerially Deposited Lead (ADL)
Maintenance SWC	(209) 948-3724	manuel.astacio@dot.ca.gov	Facility Pollution Prevention Plans (FPPP), Notice and Report of Non-Compliance, Discharge or Threat of Discharge Notification, and Report of Illicit Connection/Discharge
Maintenance SWC	(209) 948-3725	anthony.lertora@dot.ca.gov	Facility Pollution Prevention Plans (FPPP), SWDRs, Notice and Report of Non-Compliance, Discharge or Threat of Discharge Notification, and Report of Illicit Connection/Discharge

Figure 2-1 shows an organizational chart describing key persons with responsibilities for stormwater operations within the District.

This page was intentionally left blank.

*Figure 2-1: District 10 Organizational Chart*

**DISTRICTS 5, 6, 10 and CENTRAL REGION  
STORM WATER ORGANIZATIONAL CHART**



This page was intentionally left blank.

### **3 District Facilities and Water Bodies**

---

Section 3 of the DWP identifies maintenance stations (including crew functions and street addresses), vista points, commercial vehicle enforcement areas, roadside rest areas, park and ride facilities, toll road and bridge plazas, equipment shops, and other Caltrans facilities. Facility Pollution Prevention Plans (FPPPs) are prepared and implemented at Maintenance facilities within the District's boundaries, such as maintenance stations, material storage facilities, and equipment shops. To comply with Department of Homeland Security policy, the table and map identifying these facilities is not available to the public. For more information, contact Caltrans' Office of Emergency Management or Division of Environmental Analysis.

This page was intentionally left blank.

## 4 Drinking Water Reservoirs and Recharge Facilities

Section 4 of the DWP describes and identifies the high-risk areas, which are locations where spills or other releases from District-owned rights-of-way, roadways, or facilities may discharge directly to municipal or domestic water supply reservoirs or ground water percolation facilities. Projects that potentially drain to these high-risk areas consider project features that enhance spill response.

Drinking water reservoirs and recharge facilities are areas such as locations where spills from District-owned ROWs or facilities can discharge directly to municipal or domestic water supply reservoirs or ground water percolation facilities. To generate the list of municipal, domestic water supply reservoirs, and ground water percolation facilities, the District first contacted known public and private water supply providers. From the information received, the District determined which facilities were susceptible to a direct spill from a District activity or facility. This determination was based on proximity between the water body and the District's facility, use characteristics of the facility, and the probable spill response time.

When planning projects within these defined areas, District 10 considers project design features for aiding in the prevention of accidental spills that could impact the area; these features are typically commensurate with safety improvements for reducing vehicle accidents. Examples of these features may include, but are not limited to, median barrier, guardrail, signalization, and vehicle restrictions. Features considered for improving spill response time typically include elongated drainage paths, call boxes, signage, or video surveillance.

A list of drinking water reservoirs and recharge facilities within District 10 is presented in Table 4-1.

*Table 4-1: District 10 Drinking Water Reservoirs and Recharge Facilities*

Road Segment/ Facility	County	Regional Board	Drinking Water Reservoir or Recharge Facility Area	Description	Comments
Route 152 PM 2.5/ 11.0	Merced	5	San Luis Reservoir/O'Neill Forebay	The San Luis Reservoir/O'Neill Forebay provides a domestic water supply source for approximately 3,000 residents of the municipalities of Santa Nella and Dos Palos. The road segment is a heavily used trucking route and accidental spills have the potential to immediately impact the drinking water resource before response actions could be initiated.	No projects are planned within these facilities in the upcoming year.

Road Segment/ Facility	County	Regional Board	Drinking Water Reservoir or Recharge Facility Area	Description	Comments
Route 49 AMA – PM R0.142  CAL – PM 30.820/ 30.865	Amador, Calaveras	5	Pardee Reservoir	Pardee Reservoir is the main water supply reservoir, fed entirely by the Mokelumne River. Pardee Reservoir is located in Amador and Calaveras counties, just west of Highway 49. The Pardee Reservoir spillway is at elevation 568 feet. At high water, the reservoir begins approximately 1 mile downstream from the Highway 49 bridge.	East Bay Municipal Utility District (EBMUD) serves 1.3 million people in Alameda and Contra Costa counties. EBMUD is concerned with the possibility of an accidental spill near the Highway 49 Mokelumne River Bridge that would discharge into the Mokelumne River, which would flow directly and rapidly into Pardee Reservoir.
Route 26 PM 30.000/ 30.23	Calaveras	5	Pardee Reservoir	Pardee Reservoir begins approximately 13 miles downstream from the Highway 26 bridge.	EBMUD is concerned with the possibility of an accidental spill near the Highway 26 South Fork Mokelumne River Bridge that would discharge into the Mokelumne River, which would flow into Pardee Reservoir.
Route 26 PM 33.601/ 33.627	Calaveras	5	Pardee Reservoir	Pardee Reservoir begins approximately 17 miles downstream from the Highway 26 bridge.	EBMUD is concerned with the possibility of an accidental spill near the Highway 26 Middle Fork Mokelumne River Bridge that would discharge into the Mokelumne River, which would flow into Pardee Reservoir.



## 5 Slopes Prone to Erosion

Section 5 of the DWP identifies the road segments within District 10 that have slopes which are prone to erosion and sediment discharge. The road segments that are located in sensitive watersheds, or where there is an existing or potential threat to water quality, will be prioritized for implementing appropriate controls to the maximum extent practicable. In each Annual Report, the status of stabilization activities where applicable will be reported. Table 5-1 is District 10's inventory of vulnerable road segments where erosion occurs and stabilization may be required, or where rock cut slopes are located and rock falls have occurred.

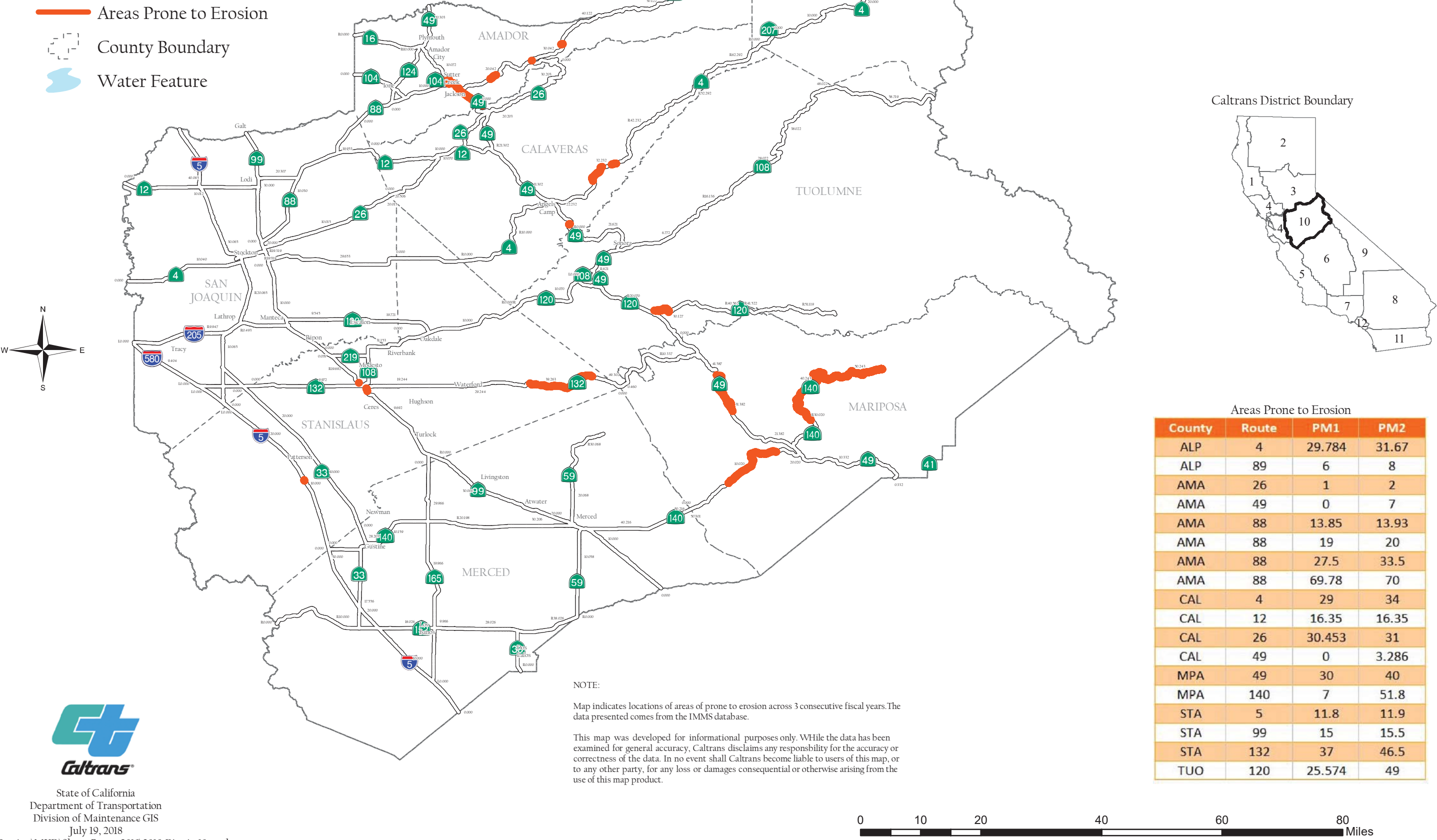
*Table 5-1: District 10 Inventory of Road Segments Prone to Erosion*

Road Segment	County	Regional Board	Watershed	Scheduled Stabilization Date
Route 26 Post Mile (PM) 0.5	Amador	Central Valley Region 5	Mill Creek-North Fork Mokelumne River	TBD
Route 26 PM 0.9 – 2.5	Amador	Central Valley Region 5	Mill Creek-North Fork Mokelumne River	TBD
Route 12 PM 14.25 – 14.75	Calaveras	Central Valley Region 5	New Hogan Reservoir-Calaveras River	TBD
Route 12 PM 15.97 – 16.97	Calaveras	Central Valley Region 5	New Hogan Reservoir-Calaveras River, Cedar Creek-North Fork Calaveras River	TBD
Route 26A PM 10.8 – 38	Calaveras	Central Valley Region 5	New Hogan Reservoir-Calaveras River, Cosgrove Creek, Pardee Reservoir-Mokelumne River, Cedar Creek-North Fork Calaveras River, Hunt Gulch-Mokelumne River, Rich Gulch-North Fork Calaveras River, Lower South Fork Mokelumne River, Mill Creek-North Fork Mokelumne River	TBD
Route 49 PM 29.934	Calaveras	Central Valley Region 5	Hunt Gulch-Mokelumne River	TBD
Route 49 PM 0 – 0.25	Calaveras	Central Valley Region 5	Mormon Creek-Stanislaus River	TBD
Route 140 PM 29.3 – 51.8	Mariposa	Central Valley Region 5	Bear Creek, Saxon Creek-Merced River, Ned Gulch-Merced River, Moss Creek-Merced River, Crane Creek-Merced River, Indian Creek-Merced River	TBD
Route 99 PM 15.662	Stanislaus	Central Valley Region 5	Town of Riverdale Park-Tuolumne River	TBD
Route 99 PM 16.825	Stanislaus	Central Valley Region 5	Riley Slough	TBD
Route 132 PM 38 – 39	Stanislaus	Central Valley Region 5	Salter Gulch-Tuolumne River	TBD

Figure 5-1 is a map showing California State Highway System areas that required maintenance within District 10 in 2018, including rock cut slopes, landslides, and moderate soil erosion.

# District 10

## California State Highway System 2018 Areas Prone to Erosion



This page was intentionally left blank.

## 6 Implementation

---

Section 6 of the DWP identifies the specific projects in which work is planned during the fiscal year within the Project Approval/Environmental Document (PA/ED), Plans, Specifications, and Estimates (PS&E), and Construction development phases. The anticipated schedule of construction and maintenance projects is subject to change. These projects are limited to those meeting any of the following criteria:

1. All projects that require soil disturbing activities
2. Adjacent to a Drinking Water or Ground Water Recharge Facility, as described in Section 4 of the DWP
3. A supplemental environmental project
4. Additional projects per agreement between the District and local RWQCB

Projects listed in Table 6-1 include (where applicable):

1. Location (county, route and post mile limits)
2. Project number (expense authorization)
3. Basic Project Description
4. Disturbed soil area
5. Presence of receiving waters within or adjacent to project limits, with special designation for 303(d) listed water bodies (adopted)
6. Drinking Water Reservoir or Ground Water Recharge Facility within or adjacent to project (as identified in Section 4 of the DWP)
7. Projected milestone dates of PA/ED, PS&E, begin Construction, and end Construction
8. Description of Construction Controls
9. Post-Construction Treatment Controls (types and quantities)
10. Dredge and fill (CWA-401) activities within the project
11. Other Regional Water Control Board Permits Required
12. Potential and Actual Impacts of Project's Discharge
13. Area of New Impervious Surface
14. Percentage of New Impervious Surface to Existing Impervious Surface

The updated lists of projects meeting these criteria will also be provided to the RWQCB annually on October 1st. Furthermore, this section identifies planned maintenance projects with soil disturbance. Information associated with the project includes location, affected water body, and area of disturbance. In addition, this section also describes the planned stormwater monitoring activities within the District; however, these activities may be conducted jointly with other Districts and HQ. Consequently, the information contained in a DWP may be repeated in another DWP.

This page was intentionally left blank.

Table 6-1: District 10 Anticipated Project Development and Construction Schedule

No.	EA	Project Location					Project Description <sup>1,2</sup>	Water Bodies Within or Adjacent to Project Limits <sup>3</sup>	Dredge and Fill Activities (Y/N/NA) <sup>4</sup>	Other Regional Water Board Permits Required <sup>5</sup>	Potential and Actual Impacts of Project's Discharge <sup>6</sup>	Disturbed Soil Area (acres)	Area of New Impervious Surface (acres)	Percentage of New Impervious Surface to Existing Impervious Surface	Description of Construction Controls (SWPPP/WPCP/TBD) <sup>7</sup>	Post-Construction Treatment Control Type, Quantity <sup>8</sup>	Anticipated Project Delivery Schedule		Construction Period	
		Co.	Route	Begin PM	End PM	RB <sup>9</sup>											PA&ED Date	PS&E Date	Start Date	End Date
1	10-0E491_	SJ	5	22.1	23.6	5	I-5 FRENCH CAMP LANDSCAPING - LANDSCAPING & MITIGATION - IN SAN JOAQUIN COUNTY ON I-5 FROM 0.4 MILES SOUTH TO 2 MILES NORTH OF THE FRENCH CAMP ROAD INTERCHANGE	French Camp Slough	-	-	No long term impacts anticipated	10	0	0	SWPPP	E	N/A	8/30/2016	7/18/2018	12/31/2019
2	10-0E530_	CAL	4	10.3	16.4	5	WAGON TRAIL REALIGNMENT - TWO LANE EXPRESSWAY - ON SR 4 FROM EAST OF COPPEROPOLIS TO APPROX 6.4 KM WEST OF CAL-4/ CAL-49 INTERSECTION IN ALTAVILLE (ANGELS CAMP) (KP16.5 /26.3 )	Black Rascal Creek, Nassau Creek, Cherokee Creek	401	-	No long term impacts anticipated	155	16.8	TBD	SWPPP	C	1/10/2017	12/2/2019	9/1/2020	9/1/2022
3	10-0E614_	SJ	99	8.6	9.5	5	MANTECA WIDENING PHASE 4 - REPLACEMENT PLANTING & IRRIGATION - REPLACEMENT PLANTING AND IRRIGATION - IN MANTECA, ON ROUTE 99 FROM 0.7 MILE NORTH OF LOUISE AVENUE TO 0.5 MILE NORTH OF FRENCH CAMP ROAD	-	-	-	No long term impacts anticipated	2.5	0.2	0	SWPPP	E	1/10/2017	6/25/2017	4/17/2018	8/2/2021
4	10-0E960_	TUO	120	32.7	56.51	5	CAP M EAST OF BUCK MEADOWS - ROADWAY REHAB - IN TUOLUMNE COUNTY IN GROVELAND ON STATE ROUTE 120 FROM 0.2 MILES EAST OF FERRETTI ROAD TO 1.9 MILES EAS OF MARIPOSA COUNTY LINE NEAR BUCK MEADOWS	-	-	-	No long term impacts anticipated	0.25	0.01	TBD	WPCP	E	3/3/2018	8/30/2018	7/10/2019	11/7/2019
5	10-0F280_	CAL	4	43.8	44.2	5	BIG TREES STATE PARK WALL - CONSTRUCT WALL FOR SEDIMENT CONTROL SHOULDERS FOR SEDIMENT CONTROL "BIG TREES SEDIMENT WALL" - IN CALAVERAS COUNTY ON STATE ROUTE (SR) 4 FROM 0.7 MILE WEST TO 0.2 MILE WEST OF THE BIG TREES STATE PARK ENTRANCE	Big Trees Creek	-	-	No long term impacts anticipated	2.9	1.3	0	SWPPP	E	1/23/2015	12/18/2015	11/28/2016	9/28/2018
6	10-0G340_	MPA	140	22.1	25.3	5	MIDPINES CAPM - PAVEMENT REHABILITATION (CAP M) - NEAR MARIPOSA FROM THE NORTH JUNCTION OF STATE ROUTES 140 & 49 TO WHITLOCK ROAD	-	-	-	No long term impacts anticipated	0	0	0	WPCP	E	3/15/2016	7/3/2017	8/22/2018	8/21/2020
7	10-0G420_	STA	5	15.8	15.9	5	I-5 SPERRY ROAD IC - RECONSTRUCT EXISTING DIAMOND INTERCHANGE HAVING SINGLE-LN RAMPS. - IN STANISLAUS COUNTY NEAR PATTERSON ON INTERSTATE 5 AT SPERRY ROAD INTERCHANGE (KP 25.5)	BLACK GULCH CALIF AQUADUCT	-	-	No long term impacts anticipated	TBD	TBD	TBD	SWPPP	E	5/31/2018	-	1/31/2020	10/29/2021
8	10-0G550_	AMA	88	21.6	24.6	5	Pine Grove Improvements - IMPROVE OPERATION/BYPASS - ON STATE ROUTE 88 IN AMADOR COUNTY, IN THE VICINITY OF PINE GROVE FROM CLIMAX ROAD TO MT. ZION ROAD. (KP 36.2/38.4)	Jackson Creek	-	-	No long term impacts anticipated	30.9	4.7	22	SWPPP	C	2/26/2016	8/30/2019	12/16/2022	12/13/2024

<sup>1</sup> Supplemental Environmental Projects designated as “SEP.”

<sup>2</sup> Projects adjacent to Drinking Water Reservoirs or Ground Water Recharge Facilities are noted (DW) and (GW), respectively.

<sup>3</sup> Water bodies with designation for 303(d) designation are noted in parentheses.

<sup>4</sup> If yes, a 401 permit will be required for this project. NA = Not Available at this time.

<sup>5</sup> Regional Water Board Permits required other than Construction General Permit and Clean Water Act Section 401 water quality certification, such as Waiver of Discharge Requirements, Dewatering Permits, Bridge Painting WDRs, etc.

<sup>6</sup> This information may come from the Water Quality Assessment Report prepared for each project, a Water Quality Technical Memorandum, or other document that evaluates the water quality impacts of a project.

<sup>7</sup> A description of the Construction Controls is available in the project’s Storm Water Pollution Prevention Plan (SWPPP), Water Pollution Control Plan (WPCP), or is To Be Determined (TBD) if the Disturbed Soil Area is unavailable.

<sup>8</sup> Treatment Control Status identified by: device type/number of devices, exempt (“E”), or under consideration (“C”). See Treatment Control Status Legend below for device type abbreviations.

<sup>9</sup> Regional Board

**Table 6-1: District 10 Anticipated Project Development and Construction Schedule**

No.	EA	Project Location					Project Description <sup>1,2</sup>	Water Bodies Within or Adjacent to Project Limits <sup>3</sup>	Dredge and Fill Activities (Y/N/NA) <sup>4</sup>	Other Regional Water Board Permits Required <sup>5</sup>	Potential and Actual Impacts of Project's Discharge <sup>6</sup>	Disturbed Soil Area (acres)	Area of New Impervious Surface (acres)	Percentage of New Impervious Surface to Existing Impervious Surface	Description of Construction Controls (SWPPP/WPCP/TBD) <sup>7</sup>	Post-Construction Treatment Control Type, Quantity <sup>8</sup>	Anticipated Project Delivery Schedule		Construction Period	
		Co.	Route	Begin PM	End PM	RB <sup>9</sup>											PA&ED Date	PS&E Date	Start Date	End Date
9	10-OG720_	SJ	5	25.8	26.1	5	SR 4 / I-5 SEISMIC RETROFIT - SEISMIC RETROFIT OF VARIOUS BRIDGES - IN SAN JOAQUIN COUNTY IN STOCKTON AT VARIOUS BRIDGE LOCATIONS	Stockton Channel, Mormon Sough	-	-	No long term impacts anticipated	0	0	0	WPCP	E	6/13/2013	1/15/2017	1/18/2018	4/18/2019
10	10-OG820_	SJ	132	0.4	7.1	5	VERNALIS SR 132 REHAB-REPAIR PCC PAVEMENT-IN SAN JOAQUIN COUNTY NEAR VERNALIS ON SR 132 FROM I-580 TO STANISLAUS COUNTY LINE	Mountain House Creek	-	-	No long term impacts anticipated	19.5	0.23	0.5	SWPPP	E	1/20/2015	5/15/2015	8/11/2016	11/30/2018
11	10-OG830_	MER	59	0	0	5	MERCED SEISMIC RESTORATION - SEISMIC RESTORATION - IN MERCED COUNTY ON STATE ROUTES 59, 140 AND 152 AT VARIOUS BRIDGES	-	-	-	No long term impacts anticipated	0.5	0.13	0	WPCP	E	1/2/2019	4/5/2021	9/1/2020	10/3/2022
12	10-OH480_	STA	108	33.1	33.4	5	RIVERBANK SLOPE PROTECTION-SLOPE REPAIR-IN STANISLAUS COUNTY NEAR THE CITY OF RIVERBANK ON STATE ROUTE 108 AT VARIOUS LOCATIONS FROM EIGHTH STREET TO TOPEKA STREET	-	-	-	No long term impacts anticipated	0.07	0.002	0	WPCP	E	6/30/2015	11/15/2018	10/30/2019	5/28/2020
13	10-OH560_	SJ	26	13.3	13.8	5	SJ 26 WIDENING-WIDEN HIGHWAY-IN SAN JOAQUIN COUNTY NEAR LINDEN ON STATE ROUTE 26 FROM E FINE ROAD AND ESCALON-BELLOTA	Mormon Slough [303(d)], Delta Waterways	-	-	No long term impacts anticipated	0.75	0.25	0	WPCP	E	6/30/2017	2/21/2019	12/12/2019	12/30/2020
14	10-OH880_	SJ	205	9	9.6	5	CHRISMAN ROAD I/C-OVERSIGHT TO CONSTRUCT NEW INTERCHANGE-IN SAN JOAQUIN COUNTY IN TRACY ON I-205 FROM 0.9 MILES EAST OF MACARTHUR DRIVE TO 2.9 MILES WEST OF I-5	Old River (San Joaquin River, Delta Medota Canal)	-	-	No long term impacts anticipated	50	15	TBD	SWPPP	C	1/31/2018	6/28/2019	12/31/2019	12/31/2021
15	10-OH890_	SJ	120	2.2	2.2	5	MCKINLEY AVENUE IC-OVERSIGHT TO CONSTRUCT NEW INTER- CHANGE-IN SAN JOAQUIN COUNTY IN THE CITY OF MANTECA ON SR 120 FROM .5 MILE WEST TO .5 MILE EAST OF THE MCKINLEY AVENUE UNDERCROSSING	District Canal	-	-	No long term impacts anticipated	55	11.5	130	SWPPP	E	11/26/2014	11/8/2017	10/22/2018	8/1/2020
16	10-OH910_	SJ	205	2.6	5.1	5	LAMMERS RD/ELEVENTH ST I/C-OVERSIGHT TO CONSTRUCT NEW INTERCHANGE-IN SAN JOAQUIN COUNTY IN AND NEAR TRACY FROM HANSEN ROAD OVERCROSSING TO GRANT LINE ROAD UNDERCROSSING	Old River	401	1602	No long term impacts anticipated	107	30.7	49	SWPPP	E	11/7/2012	-	1/31/2018	1/31/2020
17	10-OK021_	MER	99	15.8	17.3	5	WEST MERCED OVERHEAD LANDSCAPE – INSTALL ABOUT 220 TREES AND 800 GROUNDCOVER SHRUBS AND IRRIGATION SYSTEM – IN MERCED COUNTY IN MERCED ON STATE ROUTE 99 FROM NORTH OF V STREET TO BLACK RASCAL CANAL BRIDGE	-	-	-	No long term impacts anticipated	0.9	0	0	WPCP	E	7/23/2012	12/1/2013	9/8/2014	11/17/2018
18	10-OL020_	SJ	99	0	0.9	5	RIPON BRIDGE REHAB-BRIDGE REPLACEMENT-ON ROUTE 99 IN RIPON AT THE COUNTY LINE OF SAN JOAQUIN COUNTY AND STANISLAUS COUNTY AT THE STANISLAUS RIVER BRIDGES (29-0013 L/R)	Stanislaus River	401	-	No long term impacts anticipated	0.5	0	0	SWPPP	E	9/6/2016	1/15/2018	2/15/2019	12/1/2020
19	10-OL870_	STA	99	13.4	13.8	5	STANISLAUS AUXILIARY LANE-NORTHBOUND AUXILIARY LANE CONSTRUCTION-IN STANISLAUS COUNTY ON STATE ROUTE 99 NORTHBOUND BETWEEN HATCH ROAD AND SOUTH 9TH STREET	Toulomene River	-	-	No long term impacts anticipated	1.6	0	0	WPCP	E	2/1/2018	2/14/2020	11/16/2020	6/30/2021



**Table 6-1: District 10 Anticipated Project Development and Construction Schedule**

No.	EA	Project Location					Project Description <sup>1,2</sup>	Water Bodies Within or Adjacent to Project Limits <sup>3</sup>	Dredge and Fill Activities (Y/N/NA) <sup>4</sup>	Other Regional Water Board Permits Required <sup>5</sup>	Potential and Actual Impacts of Project's Discharge <sup>6</sup>	Disturbed Soil Area (acres)	Area of New Impervious Surface (acres)	Percentage of New Impervious Surface to Existing Impervious Surface	Description of Construction Controls (SWPPP/WPCP/TBD) <sup>7</sup>	Post-Construction Treatment Control Type, Quantity <sup>8</sup>	Anticipated Project Delivery Schedule		Construction Period	
		Co.	Route	Begin PM	End PM	RB <sup>9</sup>											PA&ED Date	PS&E Date	Start Date	End Date
20	10-0P200_	SJ	120	R3.4	R5.2	5	SR 120 / UNION ROAD-OVERSIGHT OF INTERCHANGE UPGRADE-IN SAN JOAQUIN COUNTY IN MANTECA ON STATE ROUTE 120 FROM 0.9 MILE WEST TO 0.9 MILE EAST OF UNION ROAD AND ON UNION ROAD FROM 0.2 MILE SOUTH OF STATE ROUTE 120 TO DANIELS STREET	-	-	-	No long term impacts anticipated	34.2	7.2	26.7	SWPPP	E	6/17/2010		11/14/2017	10/31/2019
21	10-0P540_	SJ		0	0	5	SJ I-5 BRIDGE REHAB - BRIDGE REHABILITATION - IN SAN JOAQUIN AND STANISLAUS AT 4 BRIDGES	Mt House Creek	-	-	No long term impacts anticipated	0.5	0	0	WPCP	E	9/1/2017	7/1/2019	5/6/2020	7/1/2021
22	10-0P550_	SJ	132	0.81		5	DWR BRIDGE SEISMIC RETROFIT - SEISMIC RETROFIT OF ELEVEN BRIDGES - ON ROUTES 5, 132, 152, AND ROUTE 165 CROSSING CALIFORNIA AQUEDUCT AT VARIOUS LOCATIONS IN SAN JOAQUIN COUNTY	-	-	-	No long term impacts anticipated	5.8	0	0	SWPPP	E	11/2/2015	3/30/2017	1/7/2019	12/30/2020
23	10-0P740_	MER	59	21.5	22.5	5	SR-59 LANDFILL ENTRANCE-OVERSIGHT OF NEW INTERSECTION CONSTRUCTION-IN MERCED COUNTY ON SR 59 AT LANDFILL EXIT	TBD	-	-	No long term impacts anticipated	TBD	TBD	TBD	TBD	TBD	12/1/2017	-	-	-
24	10-0P840_	SJ	4	2.1	2.1	5	SR 4 ROCK SLOPE PROJECTION – ROCK SLOPE PROTECTION – IN SAN JOAQUIN COUNTY ON WESTBOUND SR 4 AT 1.3 MILES WEST OF MIDDLE RIVER BRIDGE	Middle River	401	-	No long term impacts anticipated	0.2	0	0	WPCP	E	1/19/2016	3/15/2017	3/1/2018	10/1/2018
25	10-0P921_	MPA	140	42	42.7	5	FERGUSON SLIDE ROCK SHED CONSTRUCTION-ROCK SHED CONSTRUCTION-RESTORE TWO-LANE ACCESS ON STATE ROUTE (SR) 140 IN MARIPOSA COUNTY THROUGH THE FERGUSON SLIDE BY REMOVING THE EXISTING TALUS MATERIAL CURRENTLY BLOCKING THE HIGHWAY AND CONSTRUCTING A 2-LANE ROCK SHED STRUCTURE ON THE ORIGINAL ALIGNMENT.	Merced River	-	-	No long term impacts anticipated	TBD	TBD	TBD	TBD	TBD	-	7/16/2018	5/15/2019	4/1/2022
26	10-0P922_	MPA	140	42	42.7	5	MARIPOSA TALUS REMOVAL-TALUS REMOVAL-IN MARIPOSA COUNTY IN MARIPOSA ON STATE ROUTE 140 NEAR EL PORTAL ROAD BRIDGE TO 0.5 MILES WEST OF SOUTH FORK MERCED RIVER BRIDGE	Merced River	-	-	No long term impacts anticipated	2.9	0	0	SWPPP	E	-	3/10/2014	1/20/2015	3/30/2018
27	10-0Q121_	MER	99	R28.2	R37.3	5	NB LIVINGSTON MEDIAN WIDENING-LANE WIDENING FROM 2 TO 3 LANES-IN MERCED COUNTY IN LIVINGSTON ON STATE ROUTE 99 FROM 0.8 MILE SOUTH OF HAMMATT AVENUE TO MERCED/STANISLAUS COUNTY LINE.	Merced River	401	-	No long term impacts anticipated	30.4	20.1	0	SWPPP	E	6/2/2014	7/10/2017	8/3/2020	4/15/2022
28	10-0Q122_	MER	99	R28.2	R37.3	5	SB LIVINGSTON MEDIAN WIDENING-LANE WIDENING FROM 2 TO 3 LANES-IN MERCED COUNTY IN LIVINGSTON ON STATE ROUTE 99 FROM 0.8 MILE SOUTH OF HAMMATT AVENUE TO MERCED/STANISLAUS COUNTY LINE.	Merced River [303(d)]	-	-	No long term impacts anticipated	55	19.2	0	SWPPP	E	6/2/2014	10/26/2016	9/27/2019	7/10/2021
29	10-0Q180_	SJ	88	16.4	25.4	5	CLEMENTS CAPM-DIGOUT AND REPAIR OF LOCALIZED FAILURES AND PLACE ASPHALT CONCRETE OVERLAY-IN SAN JOAQUIN COUNTY AT AND NEAR CLEMENTS FROM 0.1 MILE EAST OF DISCH ROAD TO AMADOR COUNTY LINE	Goose Creek Lower Mokelumne	-	-	No long term impacts anticipated	0.76	0	0	WPCP	E	9/28/2016	7/26/2017	7/18/2018	6/18/2019

**Table 6-1: District 10 Anticipated Project Development and Construction Schedule**

No.	EA	Project Location					Project Description <sup>1,2</sup>	Water Bodies Within or Adjacent to Project Limits <sup>3</sup>	Dredge and Fill Activities (Y/N/NA) <sup>4</sup>	Other Regional Water Board Permits Required <sup>5</sup>	Potential and Actual Impacts of Project's Discharge <sup>6</sup>	Disturbed Soil Area (acres)	Area of New Impervious Surface (acres)	Percentage of New Impervious Surface to Existing Impervious Surface	Description of Construction Controls (SWPPP/WPCP/TBD) <sup>7</sup>	Post-Construction Treatment Control Type, Quantity <sup>8</sup>	Anticipated Project Delivery Schedule		Construction Period	
		Co.	Route	Begin PM	End PM	RB <sup>9</sup>											PA&ED Date	PS&E Date	Start Date	End Date
30	10-OS120_	MER	VAR	VAR	VAR	5	DRAINAGE RESTORATION - DRAINAGE RESTORATION - IN MERCED, AND SAN JOAQUIN COUNTIES ON STATE ROUTES 5, 12, 88, 132, AND 59, 99, 152 AT VARIOUS LOCATIONS.	-	-	-	No long term impacts anticipated	0	0	0	WPCP	E	6/4/2018	1/3/2019	1/3/2020	7/31/2020
31	10-OS680_	ALP	4	16.6	31.1	5	ALPINE CULVERT REHAB – CULVERT REHABILITATION – IN ALPINE AND AMADOR COUNTIES ON VARIOUS STATE ROUTE LOCATIONS	-	-	-	No long term impacts anticipated	0.13	0	0	WPCP	E	7/2/2018	7/2/2019	9/1/2020	5/3/2021
32	10-OS740_	SJ	88	13.5	14.1	5	SJ/ALP 88 DRAINAGE SYSTEM – REPLACE CULVERTS – ON STATE ROUTE 88 IN SAN JOAQUIN CO FROM PM 13.5-14.1 IN THE CITY OF LOCKEFORD AND ON STATE ROUTE 88 IN ALPINE CO FROM PM 0.28-2.56 NEAR THE CITY OF ALPINE/AMADOR CO LINE	Kirkwood Creek, Caples Creek	401	-	No long term impacts anticipated	1.2	0	0	WPCP	E	3/15/2019	12/27/2019	10/26/2020	10/29/2021
33	10-OS750_	ALP	88	0	4.75	5	ALP/AMA/TUO CULVERT REHAB-CULVERT REHABILITATION-IN ALPINE COUNTY ON STATE ROUTES 4, 88 AND 207, IN AMADOR COUNTY ON STATE ROUTES 16 AND 49, AND IN TUOLUMNE COUNTY ON STATE ROUTE 108	TBD	-	-	No long term impacts anticipated	0.19	0	0	WPCP	E	7/2/2018	7/2/2019	9/1/2020	5/3/2021
34	10-OS800_	STA	108	10.5	R12.5	5	NORTH COUNTY CORRIDOR-CONSTRUCT EXPRESSWAY ON NEW ALIGNMENT-IN STANISLAUS COUNTY NORTH OF THE CITY OF MODESTO FROM STATE ROUTE 99 TO SR 120 EAST OF THE CITY OF OAKDALE	Dry Creek, Cashman Creek, Wood Cutter Creek, Stanislaus River [303(d)]	-	-	TBD	TBD	TBD	TBD	SWPPP	TBD	9/1/2017	6/11/2019	7/27/2020	5/1/2023
35	10-OT680_	MER	152	11.3	11.3	5	STAA TRUCK TURNING RADIUS IMPROVEMENT-CONSTRUCT PAVED SHOULDER AT SR 152 AND SR 33 INTERCHANGES TO INCREASE THE CORNER RADII TO MEET CURRENT STAA DESIGNED VEHICLE-CONSTRUCT PAVED SHOULDER AT SR 152 AND SR 33 INTERCHANGES TO INCREASE THE CORNER RADII TO MEET CURRENT STAA DESIGNED VEHICLE.	TBD	-	-	No long term impacts anticipated	TBD	TBD	TBD	WPCP	E	5/15/2020	7/1/2021	6/15/2022	7/1/2023
36	10-OT910_	STA	99	4.3	5	5	FULKERTH IC IMPROVEMENTS-OVERSIGHT FOR INTERCHANGE IMPROVEMENTS-IN STANISLAUS COUNTY IN THE CITY OF TURLOCK ON STATE ROUTE 99 AT FULKERTH ROAD	-	-	-	No long term impacts anticipated	22.8	2.6	TBD	SWPPP	E	5/7/2014	-	7/28/2017	8/30/2019
37	10-OU520_	MER	59	12.8	13.5	5	MISSION AVE LEFT TURN-INSTALL LEFT TURN CHANNELIZATION-IN MERCED COUNTY ABOUT 2 MILES SOUTH OF MERCED ON STATE ROUTE 59 FROM 0.33 MILE SOUTH TO 0.37 MILE NORTH OF MISSION AVE/DICKENSEON FERRY ROAD	-	-	-	No long term impacts anticipated	3.26	1.52	140	WPCP	E	6/27/2014	8/1/2016	5/18/2017	9/28/2018
38	10-OV090_	MER	152	R0	R40.8	5	HIGH SPEED RAIL MERCED TO SAN JOSE - HIGH SPEED TRAIN SYSTEM - IN MERCED COUNTY ALONG STATE ROUTE 152 FROM MERCED TO SAN JOSE	TBD	TBD	TBD	TBD	TBD	TBD	TBD	WPCP	E	5/1/2018	-	-	-
39	10-OV110_	STA	99	R18.2	R20.5	5	SR 99 BECKWITH RD & CARPENTER RD ACCEL/DECEL LANES - COLLISION SEVERITY REDUCTION - IN STANISLAUS COUNTY IN MODESTO ON STATE ROUTE 99 AT BECKWITH ROAD INTERCHANGE	North Fork Dry Creek unnamed canal lateral No. 7	-	-	No long term impacts anticipated	11.1	3.5	TBD	SWPPP	E	7/28/2017	4/3/2018	12/31/2018	1/31/2020
40	10-OW350_	MER	140	5.6	5.6	5	GUSTINE ROUNDABOUT – CONSTRUCT ROUNDABOUT – IN MERCED COUNTY STATE ROUTE 140/33 PM 5.3	TBD	-	-	No long term impacts anticipated	TBD	TBD	TBD	TBD	E	5/30/2017	9/1/2017	4/1/2019	12/31/2019

**Table 6-1: District 10 Anticipated Project Development and Construction Schedule**

No.	EA	Project Location					Project Description <sup>1,2</sup>	Water Bodies Within or Adjacent to Project Limits <sup>3</sup>	Dredge and Fill Activities (Y/N/NA) <sup>4</sup>	Other Regional Water Board Permits Required <sup>5</sup>	Potential and Actual Impacts of Project's Discharge <sup>6</sup>	Disturbed Soil Area (acres)	Area of New Impervious Surface (acres)	Percentage of New Impervious Surface to Existing Impervious Surface	Description of Construction Controls (SWPPP/WPCP/TBD) <sup>7</sup>	Post-Construction Treatment Control Type, Quantity <sup>8</sup>	Anticipated Project Delivery Schedule		Construction Period	
		Co.	Route	Begin PM	End PM	RB <sup>9</sup>											PA&ED Date	PS&E Date	Start Date	End Date
41	10-OW620_	MER	5	0.4	0.9	5	ERRECA REST AREA REHAB – REPLACE PUBLIC WATER SYSTEM AND ONSITE WASTEWATER TREATMENT SYSTEM – IN MERCED COUNTY NEAR FIREBAUGH ON I-5 AT THE JOHN "CHUCK" ERRECA ROADSIDE REST AREA, BOTH NORTHBOUND AND SOUTHBOUND LOCATIONS	TBD	-	-	No long term impacts anticipated	2.47	0.02	TBD	TBD	TBD	5/30/2017	2/15/2018	11/15/2018	9/30/2019
42	10-OW630_	STA	5	27	27.5	5	WESTLEY REST AREA REHAB - REPLACE PUBLIC WATER SYSTEM AND ONSITE WASTEWATER TREATMENTS SYSTEMS - IN STANISLAUS COUNTY ON I-5 AT THE WESTLEY ROADSIDE REST AREA, BOTH NORTH-BOUND AND SOUTH-BOUND LOCATIONS	-	-	-	No long term impacts anticipated	2	0	0	SWPPP	E	6/30/2015	4/2/2018	3/1/2019	12/30/2020
43	10-OW870_	CAL	4	29.24	29.38	5	CAL SR 4 TWO WAY LEFT TURN LANE - PROVIDE TWO-WAY-LEFT-LANE WITH UNLIMITED STORAGE - ON STATE ROUTE 4 BETWEEN PENNSYLVANIA, GULCH ROAD, AND TOM BELL ROAD IN THE TOWN OF MURPHY IN CALAVERAS COUNTY.	TBD	-	-	No long term impacts anticipated	0.3	0.2	0	WPCP	E	9/25/2019	9/21/2020	7/19/2021	12/7/2021
44	10-OW900_	STA	132	0		5	STA 108 & 132 ADA RAMPS - ADA UPGRADES - IN STANISLAUS COUNTY AT RIVERBANK ON ROUTE 108 FROM 1ST ST TO 4TH ST AND IN STANISLAUS COUNTY AT MODESTO ON ROUTE 132 AT S. SANTA ROSA AVE, DALY AVE & G ST	Stanislaus River [303(d)]	-	-	No long term impacts anticipated	0	0	0	WPCP	E	9/30/2015	12/15/2017	1/3/2019	1/3/2020
45	10-0X310_	SJ	4	17.2	17.2	5	SJ 4/99 BRIDGE REHAB – REPLACE BRIDGE – IN SAN JOAQUIN COUNTY IN AND NEAR STOCKTON ALONG ROUTE 99 ON ROUTE 4 AT PM 19.75 FARMINGTON ROAD OC AND ON ROUTE 26 AT PM 1.11 FREEMONT STREET OC	Stockton Diverting Canal	-	-	No long term impacts anticipated	0.01	0	0	SWPPP	E	1/2/2018	10/1/2019	6/15/2020	12/30/2021
46	10-0X460_	SJ	5	26.5	26.5	5	STOCKTON CHANNEL VIADUCT BRIDGE REHAB - BRIDGE REHABILITATION - IN SAN JOAQUIN COUNTY IN STOCKTON (STOCKTON CHANNEL VIADUCT BR. NO. 29-0176 L/R)	Stockton Ship Channel	-	-	No long term impacts anticipated	2	TBD	TBD	WPCP	E	10/30/2020		5/30/2025	11/30/2029
47	10-0X520_	SJ	5	29		5	SJ-5, 99 & MER-165 ADA INFRASTRUCTURE – PEDESTRIAN INFRASTRUCTURE – IN SAN JOAQUIN AND MERCED COUNTIES AT VARIOUS LOCATIONS	-	-	-	No long term impacts anticipated	1.5	1.5	TBD	WPCP	E	6/29/2017	12/3/2019	12/1/2020	12/1/2021
48	10-0X560_	STA	99	18.7		5	STA 99/CARPENTER RD SB RAMPS - RECONSTRUCT RAMP AND INSTALL RIGHT TURN LANE - IN STANISLAUS COUNTY IN MODESTO ON STATE ROUTE 99 AT CARPENTER ROAD/ BRIGGSMORE AVENUE SOUTHBOUND OFFRAMP	-	-	-	No long term impacts anticipated	0	0	0	WPCP	E	9/1/2015	2/25/2016	11/28/2016	7/30/2018
49	10-0X56Y_	STA	99	18	19.7	5	SR 99 CARPENTER/BRIGGSMORE LANDSCAPE - LANDSCAPE - SR 99 CARPENTER/BRIGGSMORE LANDSCAPE	N/A	-	-	No long term impacts anticipated	0.5	0	0	WPCP	E	2/9/2017	1/12/2018	12/13/2018	2/25/2022
50	10-0X660_	STA	99	1.1	7.3	5	STA 99 MVP/EXTENDED GORES/SLOPE PAVING - ROADSIDE SAFETY IMPROVEMENTS - IN AND NEAR TURLOCK FROM WEST TURLOCK OH TO 0.3 MI NORTH OF MONTE VISTA AVENUE UC	-	-	-	No long term impacts anticipated	0.8	0.2	0	WPCP	E	7/7/2017	4/24/2018	1/23/2019	12/31/2019

**Table 6-1: District 10 Anticipated Project Development and Construction Schedule**

No.	EA	Project Location					Project Description <sup>1,2</sup>	Water Bodies Within or Adjacent to Project Limits <sup>3</sup>	Dredge and Fill Activities (Y/N/NA) <sup>4</sup>	Other Regional Water Board Permits Required <sup>5</sup>	Potential and Actual Impacts of Project's Discharge <sup>6</sup>	Disturbed Soil Area (acres)	Area of New Impervious Surface (acres)	Percentage of New Impervious Surface to Existing Impervious Surface	Description of Construction Controls (SWPPP/WPCP/TBD) <sup>7</sup>	Post-Construction Treatment Control Type, Quantity <sup>8</sup>	Anticipated Project Delivery Schedule		Construction Period	
		Co.	Route	Begin PM	End PM	RB <sup>9</sup>											PA&ED Date	PS&E Date	Start Date	End Date
51	10-0X670_	STA	99	13.8	17.6	5	STA SR 99 MAINTENANCE WWORKER SAFETY IMPROVEMENTS - ROADSIDE SAFETY IMPROVEMENTS - IN MODESTO FROM 0.1 MI SOUTH OF SOUTH MODESTO UNDERCROSSING TO 0.1 MI NORTH OF WOODLAND AVE OVERCROSSING	N/A	-	-	No long term impacts anticipated	0.9	0.9	0	WPCP	E	3/1/2019	6/15/2019	4/15/2020	12/1/2020
52	10-0X690_	SJ	4	15.7	19.2	5	SR4 MVP & ROADSIDE PAVING - ROADSIDE SAFETY IMPROVEMENTS - IN SAN JOAQUIN COUNTY IN STOCKTON AT VARIOUS LOCATIONS	Mormon Slough [303(d)], Delta Waterways	-	-	No long term impacts anticipated	2.3	2.3	100	WPCP	E	7/17/2017	9/15/2018	7/22/2019	7/5/2020
53	10-0X700_	SJ	205	1.056	12.653	5	SR205 MVP & ROADSIDE PAVING - ROADSIDE SAFETY IMPROVEMENTS - IN AND NEAR TRACY FROM 0.3 MI/WEST OF PATTERSON PASS OC TO E205-N5 CONNECTOR SEPARATION	-	-	-	No long term impacts anticipated	0.4	0.07	TBD	WPCP	E	9/7/2017	7/15/2018	5/6/2019	3/1/2020
54	10-0X710_	SJ	120	R2.6	T7.2	5	SR120 MVP & ROADSIDE PAVING - ROADSIDE SAFETY IMPROVEMENTS - IN AND NEAR MANTECA FROM 0.3 MI EAST OF MCKINLEY AVE OC TO SR 99/120 SEPARATION	-	-	-	No long term impacts anticipated	1	1.2	TBD	SWPPP	E	1/3/2018	10/2/2018	7/2/2019	7/1/2020
55	10-0X720_	SJ	5	R16.1	35.7	5	SJ I-5 MVP & ROADSIDE PAVING - ROADSIDE PAVING, MVP'S AND ACCESS GATE CONSTRUCTION - IN SAN JOAQUIN COUNTY INSTALL GORE PAVING AT 34 LOCATIONS AND MAINTAIN VEHICLE PULLOUTS AT 28 LOCATIONS	various	-	-	No long term impacts anticipated	0.85	0.85	TBD	WPCP	E	9/7/2017	7/10/2018	4/22/2019	11/4/2019
56	10-0X730_	AMA	49	3.7	4	5	SOUTH AVENUE BRIDGE - OVERSIGHT OF BRIDGE REPLACEMENT - IN AMADOR COUNTY IN THE CITY OF JACKSON ON STATE ROUTE 49 AT SOUTH AVENUE BRIDGE (#26C0004)	Jackson Creek	-	-	No long term impacts anticipated	TBD	TBD	TBD	TBD	TBD	6/7/2017	-	8/9/2021	8/21/2023
57	10-0X740_	CAL	VAR	0	0	5	CAL COUNTY BRIDGE RAIL UPGRADE - BRIDGE RAIL UPGRADE - IN CALAVERAS COUNTY ON SR 4, 12, 49 AT VARIOUS LOCATIONS.	various	-	-	No long term impacts anticipated	0.8	0	0	WPCP	E	6/10/2020	11/15/2021	9/21/2022	12/3/2024
58	10-0X750_	ALP	4,88,89	various		5	MOUNTAIN COUNTIES BRIDGE RAILS - BRIDGE RAIL UPGRADE - IN ALPINE COUNTY SEISMIC RETROFIT PROJECT FOR FOUR BRIDGES AT VARIOUS LOCATIONS	various	-	-	No long term impacts anticipated	0	0	0	WPCP	E	7/2/2018	12/2/2019	9/8/2020	8/29/2022
59	10-0X751_	CAL	VAR	0	0	5	UPGRADE BRIDGE RAILS OF THREE BRIDGES-UPGRADE BRIDGE RAILS OF THREE BRIDGES- IN CALAVERAS COUNTY ON STATE ROUTE 4 AND STATE ROUTE 26 AT ANGELS CREEK (#30 0008), SOUTH FORK MOKELUMNE RIVER BRIDGE (#30 0022) AND NORTH FORK MOKELUMNE RIVER BRIDGE (#30 0049)	various	-	-	No long term impacts anticipated	0	0	0	WPCP	E	4/1/2019	12/2/2019	3/1/2021	9/30/2022
60	10-0Y110_	MER	140	0	42.1	5	MER 140 GUARDRAIL UPGRADE – UPGRADE GUARDRAIL, TERMINAL SYSTEM AND END TREATMENTS – IN MERCED COUNTY NEAR GUSTINE ON STATE ROUTE 140 FROM I-5 TO ABOUT 6 MILES EAST OF MERCED AT VARIOUS LOCATIONS	Delta Mendota Canal, West Branch Mud Slough, Mud Slough Overflow, North Branch Mud Slough [303(d)], San Joaquin River [303(d)], East Side Irrigation Canal, Black Rascal Creek, Bear Creek [303(d)]	-	-	No long term impacts anticipated	2.43	0	TBD	WPCP	E	11/1/2017	7/15/2019	5/29/2020	10/30/2020

**Table 6-1: District 10 Anticipated Project Development and Construction Schedule**

No.	EA	Project Location					Project Description <sup>1,2</sup>	Water Bodies Within or Adjacent to Project Limits <sup>3</sup>	Dredge and Fill Activities (Y/N/NA) <sup>4</sup>	Other Regional Water Board Permits Required <sup>5</sup>	Potential and Actual Impacts of Project's Discharge <sup>6</sup>	Disturbed Soil Area (acres)	Area of New Impervious Surface (acres)	Percentage of New Impervious Surface to Existing Impervious Surface	Description of Construction Controls (SWPPP/WPCP/TBD) <sup>7</sup>	Post-Construction Treatment Control Type, Quantity <sup>8</sup>	Anticipated Project Delivery Schedule		Construction Period	
		Co.	Route	Begin PM	End PM	RB <sup>9</sup>											PA&ED Date	PS&E Date	Start Date	End Date
61	10-OY130_	MER	140	2.3	49	5	MER 140 ACCESS ROADS – EXTEND CULVERTS & INSTALL END TREATMENTS – IN MERCED COUNTY ON ROUTE 140 FROM OUTSIDE CANAL BRIDGE TO 0.7 MILE EAST OF CUNNINGHAM ROAD	Fahr Creek,	-	-	No long term impacts anticipated	0.65	0.21	0	WPCP	E	11/1/2019	9/7/2021	8/1/2022	2/15/2023
62	10-OY210_	TUO	108	4.3		5	PEACEFUL OAK RAMPS – RAMP PROJECT – ON SR 108 IN TUOLUMNE COUNTY ON PEACEFUL OAK INTERCHANGE WITHIN THE EAST SONORA BYPASS STAGE II LIMITS (R4.0/R6.0)	-	401	-	No long term impacts anticipated	22	3.3	30	SWPPP	E	4/28/2015	8/1/2016	2/19/2019	6/30/2020
63	10-OY340_	MPA	140	32.2	32.2	5	SR140 SLOPE REPAIR - SLOPE REPAIR - IN MARIPOSA COUNTY ON STATE ROUTE 140 ABOUT 2.1 MILES WEST OF BULL CREEK ROAD	TBD	-	-	No long term impacts anticipated	2.5	0	TBD	WPCP	E	7/29/2016	11/12/2020	11/1/2021	1/6/2023
64	10-OY550_	SJ	12	14.9	18.1	5	LODI ADA IMPROVEMENTS - UPGRADE CURB RAMPS, SIDEWALKS AND DRIVEWAYS TO CURRENT ADA STANDARDS - IN SAN JOAQUIN COUNTY IN THE CITY OF LODI ON ROUTE 12 BETWEEN SOUTH SCHOOL STREET AND SOUTH CENTRAL AVENUE	-	-	-	No long term impacts anticipated	0.5	0	0	WPCP	E	11/17/2015	1/17/2017	2/1/2018	10/31/2018
65	10-OY590_	SJ	12	21.2	22	5	SR140 CURB RAMPS AND SIDEWALK INSTALLATION - CONSTRUCT ADA UPGRADES - IN AND NEAR LODI FROM 0.2 MI WEST OF LOWER SACRAMENTO ROAD TO CALAVERAS COUNTY LINE	TBD	-	-	No long term impacts anticipated	0.07	0	0	WPCP	E	4/29/2020	1/15/2022	11/15/2022	11/5/2023
66	10-OY600_	MPA	140	21.2	22.8	5	MARIPOSA CROSSWALKS - INSTALL CROSSWALKS AND IN-ROADWAY WARNING LIGHTS - IN MARIPOSA COUNTY IN MARIPOSA ON STATE ROUTE 140 FROM SOUTH JUNCTION STATE ROUTE 49 TO TWELFTH STREET	N/A	-	-	No long term impacts anticipated	0.18	0	0	WPCP	E	3/15/2017	5/30/2019	3/18/2020	12/31/2020
67	10-OY740_	MER	140	6.1	35.8	5	MERCED 140 CAPM - DIGOUT AND REPAIR LOCALIZED FAILURES AND PLACE ASPHALT CONCRETE OVERLAY - IN MERCED COUNTY IN AND NEAR MERCED ON STATE ROUTE 140 FROM EAST JUNCTION STATE ROUTE 33 TO STATE ROUTE 99	-	-	-	No long term impacts anticipated	0.6	0	0	WPCP	E	11/10/2015	5/4/2016	2/21/2017	10/1/2018
68	10-OY770_	MPA	140	12	22	5	SR140 MARIPOSA CAPM - PAVEMENT PRESERVATION - NEAR MARIPOSA FROM 1.7 MI EAST OF CATHEYS VALLEY PARK TO NORTH JUNCTION SR 49-140	TBD	-	-	No long term impacts anticipated	0.5	0	0	WPCP	E	2/1/2020	8/2/2021	12/1/2023	6/1/2024
69	10-OY780	MPA	140	25.3	51.8	5	MPA ROUTE 140 PAVEMENT PRESERVATION- MPA ROUTE 140 PAVEMENT PRESERVATION- IN MARIPOSA COUNTY FROM E. WHITLOCK ROAD AND YOSEMITE NATIONAL PARK ENTRANCE.	-	-	-	No long term impacts anticipated	0.22	0	0	WPCP	E	5/1/2020	5/1/2021	4/15/2022	4/15/2024
70	10-OY790_	TUO	120	48.8	R50.8	5	SR120 SLOPE MODIFICATION - STABILIZE SLOPE - IN TUOLUMNE COUNTY FROM 1.5 MI EAST OF SWEET WATER ROAD TO 0.5 MI WEST OF SOUT FORK TUOLUMNE RIVER BRIDGE	-	-	-	No long term impacts anticipated	0.38	0.05	0	WPCP	E	9/1/2017	10/1/2018	6/26/2019	11/1/2019
71	10-OY800_	TUO	108	32.2	34.4	5	SR108 TUOLUMNE WIRE MESH - INSTALL WIRE MESH DRAPERY - NEAR STRAWBERRY FROM 0.3 MI E OF OLD STRAWBERRY ROAD TO 0.7 MILE WEST OF BEARDSLEY ROAD	-	-	-	No long term impacts anticipated	4.6	0	0	WPCP	E	11/1/2017	10/1/2018	6/26/2019	10/15/2020

**Table 6-1: District 10 Anticipated Project Development and Construction Schedule**

No.	EA	Project Location					Project Description <sup>1,2</sup>	Water Bodies Within or Adjacent to Project Limits <sup>3</sup>	Dredge and Fill Activities (Y/N/NA) <sup>4</sup>	Other Regional Water Board Permits Required <sup>5</sup>	Potential and Actual Impacts of Project's Discharge <sup>6</sup>	Disturbed Soil Area (acres)	Area of New Impervious Surface (acres)	Percentage of New Impervious Surface to Existing Impervious Surface	Description of Construction Controls (SWPPP/WPCP/TBD) <sup>7</sup>	Post-Construction Treatment Control Type, Quantity <sup>8</sup>	Anticipated Project Delivery Schedule		Construction Period	
		Co.	Route	Begin PM	End PM	RB <sup>9</sup>											PA&ED Date	PS&E Date	Start Date	End Date
72	10-1A690_	STA	99	9.7	10.9	5	MITCHELL ROAD INTERCHANGE – RECONSTRUCT INTERCHANGE – ON RTE 99 IN CERES, IN STANISLAUS COUNTY FROM 0.5 KM SOUTH TO 1.0 KM NORTH OF MITCHELL ROAD (KP 15.6/17.5)	TBD	TBD	TBD	No long term impacts anticipated	TBD	TBD	TBD	TBD	TBD	3/30/2018	6/4/2020	3/30/2021	8/30/2022
73	10-1C040_	MPA	49	0	18.5	5	MARIPOSA SR 49 CAPM - PAVEMENT PRESERVATION - PAVEMENT PRESERVATION	N/A	-	-	No long term impacts anticipated	0.58	0	0	WPCP	E	10/7/2019	7/15/2020	7/26/2021	10/3/2022
74	10-1C050	SJ	4	19.51	38.06	5	SJ 4 CAPM-CAPM-PAVEMENT PRESERVATION IN SAN JOAQUIN AND STANISLAUS COUNTY IN OR NEAR STOCKTON AND TELEGRAPH CITY ON SR 4 FROM GOLDEN GATE AVENUE OVERCROSSING AT SR 99 TO 0.5 MILE EAST OF DUNTON ROAD.	-	-	-	No long term impacts anticipated	1	0	0	WPCP	E	2/1/2023	12/15/2023	12/15/2024	12/15/2026
75	10-1C060_	SJ	5	0.0		5	SJ 5/99 ADA IMPROVEMENTS - ADA UPGRADES - IN SAN JOAQUIN COUNTY ON STATE ROUTE 5 AND 99 IN THE CITIES OF RIPON, STOCKTON AND LODI	-	-	-	No long term impacts anticipated	1.09	0	0	WPCP	E	7/1/2017	1/17/2018	1/2/2019	11/1/2019
76	10-1C140_	STA	33	0.4	0.4	5	NEWMAN INTERSECTION OVERSIGHT - WIDEN INTERSECTION & INSTALL TRAFFIC SIGNALS - IN STANISLAUS COUNTY, IN THE CITY OF NEWMAN AT THE INTERSECTION OF STATE ROUTE 33 AND INYO AVENUE	TBD	TBD	TBD	No long term impacts anticipated	TBD	TBD	TBD	TBD	TBD	7/15/2017	-	7/1/2018	11/30/2018
77	10-1C170_	MER	99	12.7	17.6	5	SR99 MERCED REHAB - PAVEMENT REHAB (2R) - IN AND NEAR THE CITY OF MERCED FROM 0.2 MILE SOUTH OF CHILDS AVE. TO 0.2 MILE SOUTH OF FRANKLIN ROAD OC.	Bear Creek	-	-	No long term impacts anticipated	19	17	38	SWPPP	E	4/2/2018	12/30/2019	11/13/2020	10/15/2025
78	10-1C180_	MER	99	35.9	37.3	5	TURLOCK 2R – PAVEMENT RESURFACING AND RESTORATION (2R) – IN MERCED AND STANISLAUS COUNTIES NEAR TURLOCK FROM 0.3 MILE NORTH OF BRADBURY ROAD OVERCROSSING TO 0.2 MILE NORTH OF STANISLAUS COUNTY LINE	-	-	-	No long term impacts anticipated	6.7	1.6	36	SWPPP	E	12/4/2015	3/3/2017	12/20/2017	12/16/2019
79	10-1C200_	SJ	4	2		5	MER/SJ/STA CULVERTS – CULVERT REHABILITATION – IN SAN JOAQUIN COUNTY AT VARIOUS LOCATIONS	-	-	-	No long term impacts anticipated	0.3	0	0	WPCP	E	4/4/2018	3/16/2020	12/1/2020	12/1/2021
80	10-1C270_	STA	5	27	27.5	5	WESTLEY REST AREA REHAB - REPLACE PUBLIC WATER SYSTEM AND ONSITE WASTEWATER TREATMENTS SYSTEMS - IN STANISLAUS COUNTY ON I-5 AT THE WESTLEY ROADSIDE REST AREA, BOTH NORTH-BOUND AND SOUTH-BOUND LOCATIONS	-	-	-	No long term impacts anticipated	0.85	0	0	WPCP	E	4/14/2017	12/1/2017	1/7/2019	12/30/2020
81	10-1C280_	SJ	99	30.8	31.5	5	VICTOR ONRAMP - RAMP REALIGNMENT - IN SAN JOAQUIN COUNTY IN LODI ON STATE ROUTE 99 AT VICTOR ROAD NORTHBOUND ON-RAMP	TBD	TBD	TBD	No long term impacts anticipated	TBD	TBD	TBD	TBD	TBD	11/2/2017	8/10/2018	1/6/2020	1/18/2021
82	10-1C290_	STA	99	0	24.8	5	SR99 STANISLAUS CAPM RAMPS – PAVEMENT PRESERVATION – IN STANISLAUS COUNTY IN AND NEAR TURLOCK AND MODESTO FROM MERCED COUNTY LINE TO SAN JOAQUIN COUNTY LINE	-	-	-	No long term impacts anticipated	2	2	0	WPCP	E	11/17/2016	11/1/2017	12/14/2018	1/2/2020

**Table 6-1: District 10 Anticipated Project Development and Construction Schedule**

No.	EA	Project Location					Project Description <sup>1,2</sup>	Water Bodies Within or Adjacent to Project Limits <sup>3</sup>	Dredge and Fill Activities (Y/N/NA) <sup>4</sup>	Other Regional Water Board Permits Required <sup>5</sup>	Potential and Actual Impacts of Project's Discharge <sup>6</sup>	Disturbed Soil Area (acres)	Area of New Impervious Surface (acres)	Percentage of New Impervious Surface to Existing Impervious Surface	Description of Construction Controls (SWPPP/WPCP/TBD) <sup>7</sup>	Post-Construction Treatment Control Type, Quantity <sup>8</sup>	Anticipated Project Delivery Schedule		Construction Period	
		Co.	Route	Begin PM	End PM	RB <sup>9</sup>											PA&ED Date	PS&E Date	Start Date	End Date
83	10-1C300_	STA	99	20.9	24.7	5	SJ and STA Ramp Metering – OPERATIONAL IMPROVEMENTS – IN STA COUNTY & SAN JOAQUIN IN & NEAR MODESTO, RIPON, & MANTECA A VARIOUS LOCATIONS FROM 0.5 MI S OF PALENDALE AVE OC TO YOSEMITE AVE (SR 120 EAST) JUNCTION	-	-	-	No long term impacts anticipated	5	3.9	TBD	SWPPP	E	7/20/2016	3/17/2017	3/30/2018	2/28/2019
84	10-1C330_	SJ	205	0	13.4	5	SR205 SMART CORRIDOR – PHASE 2 – RAMP METERS – IN SAN JOAQUIN COUNTY ON STATE ROUTE 205 NEAR TRACY FROM ALAMEDA COUNTY LINE TO STATE ROUTE 5	TBD	TBD	TBD	No long term impacts anticipated	TBD	TBD	TBD	TBD	TBD	8/15/2018	5/19/2019	5/19/2020	2/1/2022
85	10-1C350_	MER	152	0.52	13.87	5	SR 152 GUARDRAIL UPGRADE - COLLISION REDUCTION - AT VARIOUS LOCATIONS ALONG STATE ROUTE 152 IN MERCED COUNTY UPGRADE EXISTING METAL BEAM GUARDRAILS TO MIDWEST GUARD RAILS SYSTEM; REPLACE NON- STANDARD END TREATMENTS/ CRASH CUSHION TO MEET CURRENT STANDARDS AND CONSTRUCT ANCHOR BLOCKS FOR TRANSITION	TBD	-	-	No long term impacts anticipated	2.7	0	TBD	WPCP	E	1/10/2020	7/1/2020	6/1/2021	7/23/2022
86	10-1C360_	AMA	88	0		5	SR 88 Guardrail Upgrade - UPGRADE METAL BEAM GUARDRAIL TO MIDWEST GUARDRAIL SYSTEM - IN AMADOR COUNTY ON ROUTE 88 AT VARIOUS LOCATIONS	-	-	-	No long term impacts anticipated	0.1	0	0	WPCP	E	7/1/2020	4/15/2021	1/1/2021	11/15/2022
87	10-1C370_	MER	152	14.1	40.65	5	SR 152 METAL BEAM UPGRADE - COLLISION REDUCTION - ON SR 152 AT VARIOUS LOCATIONS IN MERCED COUNTY. UPGRADE EXISTING METAL BEAM GUARDRAILS TO MIDWEST GUARDRAIL SYSTEM;	-	-	-	No long term impacts anticipated	0.92	0	0	WPCP	E	2/7/2020	1/22/2021	11/30/2021	7/25/2022
88	10-1C400_	VAR	VAR	0	0	5	SR 108 AND SR 49 METAL BEAM GUARD RAIL UPGRADE - UPGRADE EXISTING METAL BEAM GUARDRAILS TO MIDWEST GUARDRAIL SYSTEM AND REPLACE END TREATMENTS TO MEET CURRENT STANDARDS. - UPGRADE EXISTING METAL BEAM GUARDRAILS TO MIDWEST GUARDRAIL SYSTEM AND REPLACE END TREATMENTS TO MEET CURRENT STANDARDS.	N/A	401	-	No long term impacts anticipated	0.2	0	0	WPCP	E	11/2/2020	8/1/2021	7/1/2022	7/11/2023
89	10-1C421_	SJ	99	14	23	5	INSTALLATION OF FIBER OPTIC CABLE IN ARCH ROAD INTERCHANGE-PAVEMENT PRESERVATION-IN STOCKTON FROM 0.3 MILE SOUTH TO 0.3 MILE NORTH OF ARCH ROAD UNDERCROSSING AND FROM 0.3 MILE NORTH OF MAIN STREET OVERCROSSING TO 0.1 MILE NORTH OF HAMMER LANE OVERCROSSING	French Camp Slough	-	-	No long term impacts anticipated	1.37	0.4	24	SWPPP	C	-	3/28/2016	1/30/2017	7/30/2018
90	10-1C430_	AMA	88	3.3	71.6	5	RUMBLE STRIP INSTALLATION-CENTERLINE AND EDGE-LINE RUMBLE STRIP INSTALLATION IN VARIOUS LOCATIONS IN AMADOR AND ALPINE COUNTIES.-CENTERLINE AND EDGE LINE RUMBLE STRIP INSTALLATION.	-	-	-	No long term impacts anticipated	0	0	0	WPCP	E	5/16/2017	11/1/2017	11/15/2018	7/1/2019
91	10-1C440_	TUO	108	0	50	5	TUO ROUTE 108 RUMBLE STRIP INSTALLATION-RUMBLE STRIP INSTALLATION.- AT VARIOUS LOCATIONS ON ROUTE 108 IN TUOLUMNE COUNTY RUMBLE STRIP INSTALLATION.	-	-	-	No long term impacts anticipated	0	0	0	WPCP	E	6/30/2017	11/28/2017	8/30/2018	2/28/2019

**Table 6-1: District 10 Anticipated Project Development and Construction Schedule**

No.	EA	Project Location					Project Description <sup>1,2</sup>	Water Bodies Within or Adjacent to Project Limits <sup>3</sup>	Dredge and Fill Activities (Y/N/NA) <sup>4</sup>	Other Regional Water Board Permits Required <sup>5</sup>	Potential and Actual Impacts of Project's Discharge <sup>6</sup>	Disturbed Soil Area (acres)	Area of New Impervious Surface (acres)	Percentage of New Impervious Surface to Existing Impervious Surface	Description of Construction Controls (SWPPP/WPCP/TBD) <sup>7</sup>	Post-Construction Treatment Control Type, Quantity <sup>8</sup>	Anticipated Project Delivery Schedule		Construction Period	
		Co.	Route	Begin PM	End PM	RB <sup>9</sup>											PA&ED Date	PS&E Date	Start Date	End Date
92	10-1C460_	TUO	120	0		5	TUO, STA, MPA RUMBLE STRIPS-INSTALL CENTERLINE, SHOULDER, AND EDGE-LINE RUMBLE STRIPS.-IN TUOLUMNE, STANISLAUS, AND MARIPOSA COUNTIES, ON ROUTES 120 AND 108 AT VARIOUS LOCATIONS.	N/A	-	-	No long term impacts anticipated	0.2	0	0	WPCP	E	5/26/2017	12/15/2017	8/17/2018	12/28/2018
93	10-1C480_	SJ	4	0.6	11.8	5	SR4&88 RUMBLE STRIP INSTALLATION-INSTALL RUMBLE STRIPS AT FIVE LOCATIONS ON SR 4 AND 88 IN SANOQUIN AND STANISLAUS COUNTIES.-IMPROVE SAFETY AT VARIOUS LOCATIONS ALONG SR 4 AND 88 IN SANOQUIN AND STANISLAUS COUNTIES.	-	-	-	No long term impacts anticipated	0.2	0	0	WPCP	E	6/6/2017	11/28/2017	8/30/2018	2/28/2019
94	10-1C500_	SJ	4	15.5	16.5	5	SJ SR 4 PAVEMENT RESURFACING AND RESTORATION-PAVEMENT RESURFACING AND PRESERVATION-IN THE CITY OF STOCKTON AT ROUTE4/I-5 INTERCHANGES FROM 0.1 MILE EAST OF FRESNO AVE. TO CENTRAL VIADUCT INCLUDING CONNECTORS.	TBD	-	-	No long term impacts anticipated	1.5	1.1	0	SWPPP	C	5/6/2020	2/12/2021	3/16/2022	8/30/2023
95	10-1C530_	SJ	0			5	STA/SJ SIGNS REHAB-SIGNS & LIGHTING REHABILITATION-IN MERCED, STANISLAUS, AND SAN JOAQUIN COUNTIES ON VARIOUS STATE ROUTES AND LOCATIONS.	-	-	-	No long term impacts anticipated	0.09	0.02	0	WPCP	E	5/16/2017	8/15/2018	7/15/2019	12/2/2019
96	10-1C540_	TUO	108	L0.0	L0.3	5	SR108 INTERSECTION IMPROVEMENT-CONSTRUCT A ROUNDABOUT OR INSTALL TRAFFIC SIGNALS AT THIS INTERSECTION-IN TUOLUMNE COUNTY ON STATE ROUTE 108 AT THE INTERSECTION OF STATE ROUTE 108 AND STATE ROUTE 120	New Melones Reservoir Tulloch Reservoir	-	-	No long term impacts anticipated	0.9	0.08	0	WPCP	E	6/28/2018	4/11/2018	1/30/2019	3/5/2020
97	10-1C620_	SJ	0	0	0	5	SJ/MER/STA/TUO TMS ELEMENT UPGRADES - UPGRADE TMS ELEMENTS - IN SAN JOAQUIN, MERCED AND AMADOR COUNTIES ON VARIOUS ROUTES	various	-	-	No long term impacts anticipated	1.66	0.37	0	WPCP	E	5/16/2017	3/1/2019	12/27/2019	12/28/2020
98	10-1C660_	SJ	120	R16.9	R16.9	5	SJ 120 STAA Improvement - PROVIDE STAA ACCESS SO THAT STAA TRUCKS CAN ACCESS TERMINALS ALONG MCHENRY AVENUE IN ESCALON. - IN SAN JOAQUIN COUNTY, AT SJ 120/MCHENRY AVENUE, STAA IMPROVMENT	N/A	-	-	No long term impacts anticipated	0.07	0.05	0	WPCP	E	5/31/2016	4/14/2017	3/15/2018	11/1/2018
99	10-1C690_	TUO	0	0	0	5	TUOLUMNE DRAINAGE RESTORATION-DRAINAGE SYSTEM RESTORATION-IN TUOLUMNE COUNTY ON STATE ROUTE 49, 108, AND 120 AT VARIOUS LOCATIONS	various	-	-	No long term impacts anticipated	0.72	0.01	0	WPCP	E	3/1/2018	9/15/2018	8/15/2018	12/1/2020
100	10-1C760_	SJ	VAR	15.3	25.8	5	ROADSIDE SAFETY IMPROVEMENTS - PROVIDE ROADSIDE SAFETY IMPROVEMENTS TO REDUCE THE FREQUENCY AND DURATION OF MAINTENANCE ACTIVITIES, THUS REDUCING MAINTENANCE PERSONNEL EXPOSURE TO TRAFFIC. - IN SAN JOAQUIN COUNTY AT SR 4 AND I-5. PROVIDE ROADSIDE SAFETY IMPROVEMENTS TO REDUCE THE FREQUENCY AND DURATION OF MAINTENANCE ACTIVITIES, THUS REDUCING MAINTENANCE PERSONNEL EXPOSURE TO TRAFFIC.	TBD	-	-	No long term impacts anticipated	3.09	2.2	0	WPCP	E	7/2/2019	6/30/2019	4/21/2021	4/21/2022
101	10-1C790_	MER	5	0.4	0.8	5	MER John Erreca Roadside Rest Area - REHABILITATE REST AREA - ABOUT 21 MILES SOUTH OF SANTA NELLA AT THE ERRECA STATE ROADSIDE REST AREA	N/A	-	-	No long term impacts anticipated	0.95	0.1	0	WPCP	E	1/15/2019	2/2/2021	2/11/2022	12/29/2023



**Table 6-1: District 10 Anticipated Project Development and Construction Schedule**

No.	EA	Project Location					Project Description <sup>1,2</sup>	Water Bodies Within or Adjacent to Project Limits <sup>3</sup>	Dredge and Fill Activities (Y/N/NA) <sup>4</sup>	Other Regional Water Board Permits Required <sup>5</sup>	Potential and Actual Impacts of Project's Discharge <sup>6</sup>	Disturbed Soil Area (acres)	Area of New Impervious Surface (acres)	Percentage of New Impervious Surface to Existing Impervious Surface	Description of Construction Controls (SWPPP/WPCP/TBD) <sup>7</sup>	Post-Construction Treatment Control Type, Quantity <sup>8</sup>	Anticipated Project Delivery Schedule		Construction Period	
		Co.	Route	Begin PM	End PM	RB <sup>9</sup>											PA&ED Date	PS&E Date	Start Date	End Date
102	10-1C800_	SJ	4	0.0	0.0	5	SJ BRIDGE MAINTENANCE - BRIDGE PREVENTATIVE MAINTENANCE - NEAR DISCOVERY BAY AT OLD RIVER BRIDGE (#29-0045)	Old River	401	404	No long term impacts anticipated	0	0	0	WPCP	E	8/15/2018	12/2/2019	10/21/2020	4/21/2022
103	10-1C810_	MER	0	0	0	5	D10 BRIDGE SUBSTRUCTURE REPAIRS - BRIDGE PREVENTATIVE MAINTENANCE - IN MERCED, SAN JOAQUIN, MARIPOSA AND STANISLAUS COUNTIES AT VARIOUS LOCATIONS	various	401	404,1600	No long term impacts anticipated	2.11	0.08	0	WPCP	E	7/2/2018	8/10/2020	7/5/2021	7/5/2022
104	10-1C860	SJ	4	17.37	17.37	5	SJ SR 4 RECONSTRUCTION OF HINGE 32-IN THE CITY OF STOCKTON, ON SR 99 AT CROSSTOWN FREEWAY VIADUCT.-SJ SR 99 RECONSTRUCTION OF HINGE 32	-	-	-	No long term impacts anticipated	0	0	0	WPCP	E	11/15/2017	1/1/2019	11/29/2019	6/2/2020
105	10-1C870_	STA	99	13.9	15.1	5	STA SR 99 REPLACE BRIDGE DECK AC OVERLAY-UPGRADE APPROACH SLABS, JOINT SEALS AND OVERLAY.-IN MODESTO AT SOUTH MODESTO OH, TUOLUMNE RIVER AND S MODESTO UC.	Tuolumne River	-	-	No long term impacts anticipated	0.3	0.3	0	WPCP	E	6/28/2017	2/16/2018	12/14/2018	1/2/2020
106	10-1C880_	SJ	99	21.7	21.7	5	STA SR 99 REPLACE BRIDGE DECK AC OVERLAY-UPGRADE APPROACH SLABS, JOINT SEALS AND OVERLAY.-IN MODESTO AT SOUTH MODESTO OH, TUOLUMNE RIVER AND S MODESTO UC.	-	-	-	No long term impacts anticipated	0	0	0	WPCP	E	7/13/2017	3/16/2018	11/22/2018	9/30/2019
107	10-1C940	SJ	5	26.47	26.47	5	SJ SR 5 BRIDGE DECK REHABILITATION-REHABILITATE BRIDGE DECK-SAN JOAQUIN SR 5 BRIDGE DECK REHABILITATION AT STOCKTON CHANNEL VIADUCT	San Joaquin River	-	-	No long term impacts anticipated	0	0	0	WPCP	E	7/13/2018	8/23/2019	7/13/2020	3/10/2021
108	10-1C960_	SJ	VAR	0	0	5	SR 120 TMC UPGRADE - UPGRADE EXISTING COMMUNICATION INFRASTRUCTURE BETWEEN FIELD ELEMENTS AND THE DISTRICT 10 TRAFFIC MANAGEMENT CENTER. - UPGRADE EXISTING COMMUNICATION INFRASTRUCTURE BETWEEN FIELD ELEMENTS AND THE DISTRICT 10 TRAFFIC MANAGEMENT CENTER.	-	-	-	No long term impacts anticipated	0.2	0	0	WPCP	E	5/3/2019	6/10/2021	4/15/2022	10/17/2022
109	10-1C970_	STA	5	0		5	Install Midwest Guardrail System - UPGRADE GUARDRAIL - IN STANISLAUS COUNTY ON ROUTE 5, ALSO ON SJ-5 AND MER-152 AT VARIOUS LOCATIONS	-	-	-	No long term impacts anticipated	3.1	0.28	0	WPCP	E	3/1/2019	9/1/2019	7/15/2020	12/1/2020
110	10-1E210_	SJ	205	1.1	1.6	5	I-205/MHP INTERCHANGE-INTERCHANGE IMPROVEMENTS-IN SAN JOAQUIN COUNTY IN THE CITY OF TRACY ALONG MOUNTAIN HOUSE PARKWAY (MHP) AT I-205 INTERCHANGE	TBD	-	-	No long term impacts anticipated	20.8	5.9	TBD	SWPPP	E	3/30/2018	1/30/2019	9/27/2019	6/30/2021
111	10-1E220_	SJ	580	13.3	13.8	5	I-580/MHP INTERCHANGE-INTERCHANGE UPGRADES-IN SAN JOAQUIN COUNTY IN THE CITY OF TRACY ALONG MOUNTAIN HOUSE PARKWAY (MHP) AT I-580 INTERCHANGE	TBD	401	-	No long term impacts anticipated	2.3	0.79	TBD	SWPPP	E	3/30/2018	1/30/2019	9/27/2019	6/30/2021
112	10-1E350_	MER	59	16	16.2	5	MERCED 59 INTERSECTION SAFETY IMPROVEMENTS-INTERSECTION SAFETY IMPROVEMENTS.-IN THE CITY OF MERCED FROM NORTH OF COOPER AVENUE TO SOUTH FORK BLACK RASCAL CREEK BRIDGE. INTERSECTION SAFETY IMPROVEMENTS.	-	401	-	No long term impacts anticipated	0.8	0.8	0	WPCP	E	6/30/2017	2/15/2018	1/4/2019	11/29/2019

**Table 6-1: District 10 Anticipated Project Development and Construction Schedule**

No.	EA	Project Location					Project Description <sup>1,2</sup>	Water Bodies Within or Adjacent to Project Limits <sup>3</sup>	Dredge and Fill Activities (Y/N/NA) <sup>4</sup>	Other Regional Water Board Permits Required <sup>5</sup>	Potential and Actual Impacts of Project's Discharge <sup>6</sup>	Disturbed Soil Area (acres)	Area of New Impervious Surface (acres)	Percentage of New Impervious Surface to Existing Impervious Surface	Description of Construction Controls (SWPPP/WPCP/TBD) <sup>7</sup>	Post-Construction Treatment Control Type, Quantity <sup>8</sup>	Anticipated Project Delivery Schedule		Construction Period	
		Co.	Route	Begin PM	End PM	RB <sup>9</sup>											PA&ED Date	PS&E Date	Start Date	End Date
113	10-1E531_	SJ	88	22.1		5	LIBERTY SAFETY IMPROVEMENT-IN SAN JOAQUIN COUNTY UPGRADE INTERSECTION CONTROL AT SR 88 AND LIBERTY ROAD-IN SAN JOAQUIN COUNTY COLLISION REDUCTION AT SR 88 AND LIBERTY ROAD	TBD	-	TBD	No long term impacts anticipated	2.25	0.23	0	WPCP	E	7/31/2018	10/21/2019	6/26/2020	1/29/2021
114	10-1E570_	MPA	49	0.3	23	5	RUMBLE STRIP INSTALLATION-INSTALL CENTERLINE AND EDGE LINE RUMBLE STRIPS.-CENTERLINE AND EDGE LINE RUMBLE STRIP INSTALLATION IN MARIPOSA AND TUOLUMNE COUNTIES.	-	-	-	No long term impacts anticipated	0	0	0	WPCP	E	6/6/2017	11/1/2017	11/15/2018	7/1/2019
115	10-1E580_	MER	165	0	0	5	MER, MPA, STA RUMBLE STRIP INSTALLATION-RUMBLE STRIP INSTALLATION- RUMBLE STRIP INSTALLATION AT VARIOUS LOCATIONS ON SR 140 IN MERCED COUNTY AND MARIPOSA COUNTIES AND IN SR 165 IN MERCED AND STANISLAUS COUNTIES.	-	-	-	No long term impacts anticipated	0	0	0	WPCP	E	6/19/2017	2/15/2018	12/14/2018	11/1/2019
116	10-1E590_	SJ	205	0	0	5	WET COLLISIONS REDUCTION-APPLY HIGH FRICTION SURFACE TREATMENT-ON STATE ROUTE 4, 5, 99, 120, AND 205 IN SAN JOAQUIN, STANISLAUS, AND TUOLUMNE COUNTIES	-	-	-	No long term impacts anticipated	0.2	0	0	WPCP	E	10/27/2017	2/1/2018	9/30/2018	1/8/2019
117	10-1E610_	SJ	VAR	0	0	5	SJ DRAINAGE PUMP PLANT UPGRADE-UPGRADE DRAINAGE PUMP PLANTS-UPGRADE THE EXISTING DRAINAGE PUMP PLANTS TO EFFECTIVELY PREVENT ROADWAY FLOODING.	-	-	-	No long term impacts anticipated	3.11	0	0	WPCP	E	9/9/2019	10/7/2021	7/5/2022	11/6/2023
118	10-1E620_	VAR	VAR	VAR	VAR	5	Replace Drainage Pumps - LOCATIONS STORMWATER PUMPING PLAN UPGRADES - STA AND MER ROUTE 99 & 59 REPLACE DRAINAGE PUMPS IN STANISLAUS AND MERCED COUNTIES AT VARIOUS LOCATIONS	TBD	-	-	No long term impacts anticipated	0.05	0	0	WPCP	E	6/26/2019	5/1/2020	3/26/2021	2/9/2022
119	10-1E700_	STA	132	R11.3	R11.7	5	MODESTO SOIL STOCKPILE ENCAPSULATION-ENCAPSULATE/CONTAIN SOIL STOCKPILES-THREE SOIL STOCKPILES LOCATED IN THE CITY OF MODESTO ALONGSIDE SR 99 AND THE FUTURE SR 132 ALIGNMENT.	-	-	-	No long term impacts anticipated	15	0	0	SWPPP	E	2/18/2018	10/15/2018	10/26/2019	4/12/2020
120	10-1E740_	SJ	99	4.6	6.3	5	SR 99 AND SR 120 INTERCHANGE IMPROVEMENTS-INTERCHANGE IMPROVEMENTS-IN SAN JOAQUIN COUNTY IN MANTECA AT THE SR 99/120 INTERCHANGE	TBD	-	-	No long term impacts anticipated	2	1.6	TBD	SWPPP	C	8/8/2018	8/12/2020	9/1/2021	9/1/2023
121	10-1E770_	MPA	41	1.97	4.9	5	CULVERT REHABILITATION NEAR FISH CAMP IN MARIPOSA COUNTY-DRAINAGE SYSTEM RESTORATION-NEAR FISH CAMP, FROM SOUTH OF SUMMIT ROAD TO SOUTH OF YOSEMITE NATIONAL PARK BOUNDARY. REHABILITATE CULVERTS	-	-	-	No long term impacts anticipated	0.2	0.2	0	WPCP	E	11/1/2017	9/3/2018	7/1/2019	7/1/2020
122	10-1E790_	SJ	5	28.3	28.3	5	LEVEE RESTORATION AT SMITH CANAL BRIDGES-LEVEE RESTORATION-IN SAN JOAQUIN COUNTY IN THE CITY OF STOCKTON ON INTERSTATE 5 AT SMITH CANAL BRIDGES (#29 0173 L&R)	TBD	TBD	TBD	No long term impacts anticipated	TBD	TBD	TBD	TBD	TBD	12/1/2017	12/1/2019	11/20/2019	7/20/2020
123	10-1F040_	SJ	120	1	6.6	5	INSTALL RAMP METERING SYSTEM--IN SAN JOAQUIN COUNTY ON STATE ROUTE 120, INSTALL RAMP METERS	-	-	-	No long term impacts anticipated	25	5	TBD	SWPPP	E	3/2/2020	1/3/2022	2/1/2023	2/1/2024
124	10-1F070_	SJ	99	28.3	31.4	5	LODI 99 WIDENING - - IN SAN JOAQUIN COUNTY IN LODI ON STATE ROUTE 99 FROM HARNEY LANE INTERCHANGE TO TURNER ROAD INTERCHANGE	Mokelumne River, Pixley Slough	-	-	No long term impacts anticipated	12.75	14	64	SWPPP	C	9/28/2018	10/29/2019	11/25/2020	7/5/2022

**Table 6-1: District 10 Anticipated Project Development and Construction Schedule**

No.	EA	Project Location					Project Description <sup>1,2</sup>	Water Bodies Within or Adjacent to Project Limits <sup>3</sup>	Dredge and Fill Activities (Y/N/NA) <sup>4</sup>	Other Regional Water Board Permits Required <sup>5</sup>	Potential and Actual Impacts of Project's Discharge <sup>6</sup>	Disturbed Soil Area (acres)	Area of New Impervious Surface (acres)	Percentage of New Impervious Surface to Existing Impervious Surface	Description of Construction Controls (SWPPP/WPCP/TBD) <sup>7</sup>	Post-Construction Treatment Control Type, Quantity <sup>8</sup>	Anticipated Project Delivery Schedule		Construction Period	
		Co.	Route	Begin PM	End PM	RB <sup>9</sup>											PA&ED Date	PS&E Date	Start Date	End Date
125	10-1F170_	SJ	26	1.1	1.1	5	SJ Route 26 Increase Bridge Vertical Clearance - INCREASE BRIDGE VERTICAL CLEARANCE - IN SAN JOAQUIN COUNTY IN STOCKTON AT ROUTE 26/99 SEPARATION	TBD	-	-	No long term impacts anticipated	2.5	0	0	SWPPP	E	5/1/2019	1/15/2021	7/1/2021	12/29/2023
126	10-1F180_	SJ	4	16	19.4	5	SR-4 RAMP METERING SYSTEM INSTALLATION - SR-4 RAMP METERING SYSTEM INSTALLED	TBD	TBD	TBD	No long term impacts anticipated	0.94	0.12	TBD	WPCP	E	9/15/2019	10/15/2021	12/1/2022	7/18/2025
127	10-1F270_	SJ	99	0		5	HIGHWAY PLANTING RESTORATION - TREE PRUNING AND REMOVAL - ON STATE ROUTE 99 IN MERCED, STANISLAUS AND SAN JOAQUIN AT VARIOUS LOCATIONS.	TBD	-	-	No long term impacts anticipated	0.2	0	0	WPCP	E	4/19/2017	3/27/2017	8/18/2017	9/14/2018
128	10-1F400_	SJ	4	0		5	SJ CHANGEABLE MESSAGE SIGNS-INSTALL CMSS, CCTV, TMSS, VCS, RWIS AND FO CABLE-IN AND NEAR STOCKTON AT VARIOUS LOCATIONS, ALSO ON RTE 99 AND I-5	-	-	-	No long term impacts anticipated	0.98	0.17	0	WPCP	E	3/13/2019	9/29/2021	7/29/2022	3/10/2023
129	10-1F430_	MER	140	36	37.7	5	MER ROUTE 140 PAVEMENT REHAB - PAVEMENT REHAB - PAVEMENT REHAB IN MERCED COUNTY IN MERCED CITY FROM CYPRESS WAY TO 0.3 MILES EAST SANTA FE AVE.	-	-	-	No long term impacts anticipated	1.2	0.01	0	WPCP	E	8/1/2017	9/1/2017	7/2/2018	3/1/2019
130	10-1F460_	SJ	4	4.1	4.9	5	SJ MIDDLE RIVER BRIDGE ROADWAY REALIGNMENT - SJ MIDDLE RIVER BRIDGE ROADWAY REALIGNMENT - IN SAN JOAQUIN COUNTY AT THE MIDDLE RIVER BRIDGE	Middle River	TBD	TBD	No long term impacts anticipated	7.3	1.8	TBD	SWPPP	E	12/3/2018	2/20/2020	10/21/2020	4/21/2022
131	10-1F640_	AMA	4	0		5	TREE PRUNING AND REMOVAL-TREE PRUNING AND REMOVAL.-IN ALPINE, AMADOR, CALAVERAS, TUOLUMNE MARIPOSA, MERCED, SAN JOAQUIN, AND STANISLAUS COUNTIES ON ROUTES 4, 5, 49, 88, 89, 108, 120, 140, AND 207. REMOVE DEAD OR DYING DROUGHT DAMAGED TREES OR TRIM.	TBD	-	-	No long term impacts anticipated	1.1	0	0	WPCP	E	6/9/2017	7/21/2017	12/12/2017	1/11/2019
132	10-1F730_	SJ	99	5.3	5.7	5	SJ 99 COLLISION REDUCTION-INSTALLATION OF CONCRETE MEDIAN BARRIER.-IN SAN JOAQUIN COUNTY, SJ 99 COLLISION REDUCTION.0.4 MILE TO 0.8 MILE NORTH OF AUSTIN RD. OVER-CROSSING.	-	-	-	No long term impacts anticipated	0.12	0	0	WPCP	E	6/6/2017	12/1/2017	8/20/2018	10/15/2018
133	10-1F740_	VAR	VAR	VAR	VAR	5	SR 4 AND SR 26 IN CALAVERAS, AMADOR, AND ALPINE CO.-RUMBLE STRIP INSTALLATION-RUMBLE STRIP INSTALLATION	-	-	-	No long term impacts anticipated	0	0	0	WPCP	E	11/28/2017	5/23/2018	3/5/2019	12/30/2019
134	10-1F760_	SCR	17	4.44	4.44	5	POTATO SLOUGH BRIDGE BEARING PADS - REPLACE BRIDGE BEARING PADS - REPLACE BRIDGE BEARING PADS	-	-	-	No long term impacts anticipated	0.2	0	0	WPCP	E	7/1/2021	12/1/2021	8/24/2022	7/31/2023
135	10-1F830_	AMA	VAR	0	0	5	AMA CURB RAMPS - INSTALL/UPGRADE CURB RAMPS, SIDEWALKS, DRIVEWAYS; PROVIDE ACCESSIBLE ASPHALT CONCRETE SHOULDER, AND INSTALL ACCESSIBLE PEDESTRIAN SIGNALS (APS) AND PUSH BUTTONS TO CURRENT AMERICANS WITH DISABILITIES ACT (ADA) STANDARDS. - STATE ROUTE (SR) 49 BETWEEN PM 4.0 TO PM 4.206, AND SR-88 BETWEEN PM 14.292 TO PM 14.360 IN THE CITY OF JACKSON, IN AMADOR COUNTY.	TBD	TBD	TBD	TBD	TBD	TBD	TBD	TBD	TBD	2/14/2018	4/12/2019	2/25/2020	12/2/2020

**Table 6-1: District 10 Anticipated Project Development and Construction Schedule**

No.	EA	Project Location					Project Description <sup>1,2</sup>	Water Bodies Within or Adjacent to Project Limits <sup>3</sup>	Dredge and Fill Activities (Y/N/NA) <sup>4</sup>	Other Regional Water Board Permits Required <sup>5</sup>	Potential and Actual Impacts of Project's Discharge <sup>6</sup>	Disturbed Soil Area (acres)	Area of New Impervious Surface (acres)	Percentage of New Impervious Surface to Existing Impervious Surface	Description of Construction Controls (SWPPP/WPCP/TBD) <sup>7</sup>	Post-Construction Treatment Control Type, Quantity <sup>8</sup>	Anticipated Project Delivery Schedule		Construction Period	
		Co.	Route	Begin PM	End PM	RB <sup>9</sup>											PA&ED Date	PS&E Date	Start Date	End Date
136	10-1G420_	STA	132	27.21	28.01	5	SR 132 ADA IMPROVEMENTS-WIDEN ASPHALT CONCRETE (AC) SHOULDER TO PROVIDE MINIMUM 4'-0" ACCESSIBLE PEDESTRIAN PATHWAY, INSTALL/UPGRADE SIDEWALKS, AND INSTALL CURB RAMPS AND/OR AC LEVEL PADS.-ON STATE ROUTE 132 FROM REINWAY AVENUE TO "F" STREET IN WATERFORD, IN STANISLAUS COUNTY.	-	-	-	No long term impacts anticipated	0.7	0	0	WPCP	E	5/29/2019	5/4/2021	3/18/2022	8/10/2022
137	10-1G510_	SJ	12	17.437	18.054	5	SJ 12 ADA-UPGRADE CURB RAMPS, SIDEWALK, DRIVEWAYS, ACCESSIBLE PEDESTRIAN SIGNAL (APS) STANDARDS.-ON SR 12 FROM SOUTH STOCKTON STREET, POSTMILE 17.43 TO THE SB SR 99 RAMP JUNCTION POSTMILE 18.05 IN THE CITY OF LODI IN SAN JOAQUIN COUNTY.	-	-	-	No long term impacts anticipated	0.7	0	0	WPCP	E	5/28/2019	7/2/2021	5/12/2022	10/11/2022
138	10-1G651	TUO	49	25.3	25.3	5	TUTTLETOWN PAVEMENT WIDENING-WIDEN PAVEMENT TO ACCOMMODATE STAA TRUCKS.-ON TUO -49 IN TUTTLETOWN, TUOLUMNE COUNTY	-	TBD	TBD	TBD	TBD	TBD	TBD	TBD	TBD	12/10/2018	1/28/2020	4/14/2021	12/30/2021
139	10-1G660	MER	33	13.2	17.5	5	MER 33 ROADWAY REHABILITATION-ROADWAY REHABILITATION 3R-PAVEMENT REHAB IN MERCED COUNTY IN AND NEAR SANTA NELA FROM WEST JUNCTION 152/33 TO 0.2 MILE NORTH OF MC CABE ROAD.	-	TBD	TBD	TBD	TBD	TBD	TBD	TBD	TBD	5/5/2023	5/23/2025	7/11/2027	7/27/2028
140	10-1G720	STA	5	27	27.5	5	ZEV CHARGING STATION PILOTS-SAFETY ROADSIDE REST AREA REHABILITATION-ON INTERSTATE 5 IN STANISLAUS COUNTY FROM PM 27.0 TO PM 27.5 AT THE WESTLEY SAFETY ROADSIDE REST AREA NEAR THE CITY OF WESTLEY. INSTALL ZERO EMISSION VEHICLE PUBLIC CHARGING STATION INFRASTRUCTURE.	-	-	-	No long term impacts anticipated	less than 1.0	TBD	TBD	WPCP	E	11/1/2017	11/1/2017	11/1/2018	12/16/2019
141	10-1G722	STA	5	27	27.5	5	ZEV CHARGING STATION - WESTLEY-INSTALL ZEV CHARGING STATION-IN STANISLAUS COUNTY ON SR 5 AT PM 27 TO 27.5 INSTALL ZEV CHARGING STATIONS INFRASTRUCTURE AT THE WESTLEY SRRA.	-	TBD	TBD	TBD	TBD	TBD	TBD	TBD	TBD		9/14/2018	3/21/2019	6/25/2020
142	10-1G730	SJ	99	9.2	9.2	5	MANTECA ADVANCE GUIDE SIGN-INSTALL ADVANCE GUIDE SIGN ( OVERHEAD SIGN-TRUSS, SINGLE POST) FACING EASTBOUND TRAFFIC.-ON WEST LATHROP ROAD BETWEEN CRESTWOOD AVENUE AND NORTH MAIN STREET APPROACHING STATE ROUTE 99 INTERCHANGE IN THE CITY OF MANTECA IN SAN JOAQUIN COUNTY.	-	TBD	TBD	TBD	TBD	TBD	TBD	TBD	TBD	8/2/2018	10/23/2018	5/13/2019	9/13/2019
143	10-1G750_	SJ	99	VAR	VAR	5	D 10 MVDS REPLACEMENT AND UPGRADE-UPGRADE OR REPLACE EXISTING LEGACY, INEFFICIENT AND DAMAGED MICROWAVE VEHICLE DETECTION SYSTEMS (MVDSS) AT VARIOUS LOCATIONS IN DISTRICT 10-UPGRADE OR REPLACE EXISTING LEGACY, INEFFICIENT AND DAMAGED MICROWAVE VEHICLE DETECTION SYSTEMS (MVDSS) AT VARIOUS LOCATIONS IN DISTRICT 10	-	-	-	No long term impacts anticipated	0.03	0.01	0	WPCP	E	4/1/2019	12/9/2019	9/15/2020	9/15/2021

Table 6-1: District 10 Anticipated Project Development and Construction Schedule

No.	EA	Project Location					Project Description <sup>1,2</sup>	Water Bodies Within or Adjacent to Project Limits <sup>3</sup>	Dredge and Fill Activities (Y/N/NA) <sup>4</sup>	Other Regional Water Board Permits Required <sup>5</sup>	Potential and Actual Impacts of Project's Discharge <sup>6</sup>	Disturbed Soil Area (acres)	Area of New Impervious Surface (acres)	Percentage of New Impervious Surface to Existing Impervious Surface	Description of Construction Controls (SWPPP/WPCP/TBD) <sup>7</sup>	Post-Construction Treatment Control Type, Quantity <sup>8</sup>	Anticipated Project Delivery Schedule		Construction Period	
		Co.	Route	Begin PM	End PM	RB <sup>9</sup>											PA&ED Date	PS&E Date	Start Date	End Date
144	10-1G990_	VAR	VAR	VAR	VAR	5	D 10 TMS REPAIR-REPAIR EXISTING TRAFFIC MONITORING STATIONS (TMS) AT VARIOUS LOCATIONS IN DISTRICT 10.-REPAIR EXISTING TRAFFIC MONITORING STATIONS (TMS) AT VARIOUS LOCATIONS IN DISTRICT 10.	-	-	-	No long term impacts anticipated	0.2	0	0	WPCP	E	1/2/2019	12/9/2019	7/29/2020	7/29/2021
145	10-1H030	SJ	26	4.22	4.22	5	SJ 26 INTERSECTION IMPROVEMENTS-MOBILITY-OPERATIONAL IMPROVEMENTS-SJ SR-26/ALPINE ROAD INTERSECTION ROUNDABOUT AND SIGNALIZED IMPROVEMENTS, EAST OF SR-99 IN SAN JOAQUIN COUNTY.	-	TBD	TBD	TBD	TBD	TBD	TBD	TBD	TBD	10/29/2021	11/6/2023	7/26/2024	7/28/2025
146	10-1H150_	SJ	120	0.5	7.1	5	SR 120 -6 LANE WIDENING (SR-99 TO I-5) -- SR 120 -6 LANE WIDENING (SR-99 TO I-5)	TBD	TBD	TBD	TBD	TBD	TBD	TBD	TBD	TBD	TBD	TBD	TBD	TBD
147	10-1H160_	SJ	5	11.06	16.47	5	I-5 MOSSDALE HOV WIDENING - I-5 MOSSDALE HOV WIDENING	TBD	TBD	TBD	TBD	TBD	TBD	TBD	TBD	TBD	TBD	TBD	TBD	TBD
148	10-1H170_	SJ	205	0	13.4	5	I-205 TRACY HOV 8 LANE WIDENING (I-5 TO I-580) - I-205 TRACY HOV 8 LANE WIDENING (I-5 TO I-580)	TBD	TBD	TBD	TBD	TBD	TBD	TBD	TBD	TBD	10/1/2021	TBD	TBD	TBD
149	10-1H200	SJ	4	14.2	14.2	5	SAN JOAQUIN RIVER (GARWOOD) BRIDGE-BRIDGE REHABILITATION-BRIDGE REHABILITATION IN SAN JOAQUIN COUNTY ON STATE ROUTE 4 AT SAN JOAQUIN RIVER BRIDGE (#29 0050)	San Joaquin River	401	404	No long term impacts anticipated	0.8	0.16	0	WPCP	E	8/18/2023	12/30/2025	12/30/2026	2/28/2029
150	10-1H270	SJ	580	0.23	12.7	5	I580 BRIDGE REHAB-BRIDGE REHABILITATION-BRIDGE DECK OVERLAY WITH POLYESTER CONCRETE, REPLACE APPROACH SLABS AND JOINT SEALS IN SAN JOAQUIN COUNTY ON STATE ROUTE 580 FROM GAFFEY ROAD UNDERCROSSING TO EAST MIDWAY OVERHEAD.	-	-	-	No long term impacts anticipated	0.1	0.1	0	WPCP	E	11/2/2021	11/6/2023	9/3/2024	7/6/2026
151	10-1H280	STA	5	10.7	25.5	5	STA 5 BRIDGE REHAB-BRIDGE REHABILITATION-BRIDGE DECK OVERLAY WITH POLYESTER CONCRETE, REPLACE APPROACH SLABS AND JOINT SEALS IN STANISLAUS COUNTY ON STATE ROUTE 5 FROM FINK ROAD UC TO KHALSA ROAD UC	-	-	-	No long term impacts anticipated	0.2	0	0	WPCP	E	8/26/2021	12/30/2022	11/30/2023	8/30/2024
152	10-1H340_	SJ	5	0	0	5	I-5 FAST FREIGHT FOCUS BRIDGE - TO IMPROVE FREIGHT MOBILITY, UPGRADE DEFICIENT AND AGING STRUCTURE INFRASTRUCTURE AND REMOVE CORRIDOR VERTICAL CLEARANCE AND LOAD CONSTRAINTS. - IN SAN JOAQUIN COUNTY, ON I-5 AT POSTMILES 10.65 AND R21.44	TBD	TBD	TBD	TBD	TBD	TBD	TBD	TBD	TBD	1/9/2018	TBD	TBD	TBD
153	10-1H500_	CAL	4	16.15	16.15	5	REPLACE BRIDGE - BRIDGE RAIL UPGRADE - IN CALAVERAS COUNTY ON SR-4 AT WEST BRANCH CHEROKEE CREEK (PM 16.15) NEAR ANGELS CAMP.	TBD	TBD	TBD	TBD	TBD	TBD	TBD	TBD	TBD	3/23/2020	11/15/2021	9/21/2022	8/2/2023
154	10-1H510	SJ	99	28.2	31.7	5	SJ 99 ROADSIDE IMPROVEMENTS-ROADSIDE SAFETY IMPROVEMENTS-MAINTENANCE ROADSIDE SAFETY IMPROVEMENTS IN SAN JOAQUIN COUNTY, ON STATE ROUTE 99 IN LODI FROM 0.2 MILE SOUTH OF HARNEY LANE OC TO 0.13 MILE NORTH OF TURNER ROAD.	-	-	-	No long term impacts anticipated	2.5	0.2	0	WPCP	E	8/31/2021	9/16/2022	5/19/2023	6/28/2024

**Table 6-1: District 10 Anticipated Project Development and Construction Schedule**

No.	EA	Project Location					Project Description <sup>1,2</sup>	Water Bodies Within or Adjacent to Project Limits <sup>3</sup>	Dredge and Fill Activities (Y/N/NA) <sup>4</sup>	Other Regional Water Board Permits Required <sup>5</sup>	Potential and Actual Impacts of Project's Discharge <sup>6</sup>	Disturbed Soil Area (acres)	Area of New Impervious Surface (acres)	Percentage of New Impervious Surface to Existing Impervious Surface	Description of Construction Controls (SWPPP/WPCP/TBD) <sup>7</sup>	Post-Construction Treatment Control Type, Quantity <sup>8</sup>	Anticipated Project Delivery Schedule		Construction Period	
		Co.	Route	Begin PM	End PM	RB <sup>9</sup>											PA&ED Date	PS&E Date	Start Date	End Date
155	10-1H530	STA	99	24	24.7	5	SR 99 SAFETY IMPROVEMENTS-ROADSIDE SAFETY IMPROVEMENTS-MAINTENANCE ROADSIDE SAFETY IMPROVEMENTS IN STANISLAUS AND SAN JOAQUIN COUNTY, ON STATE ROUTE 99 FROM 0.3 MILE SOUTH OF HAMMATT RD OC TO 0.3 MILE NORTH OF YOSEMITE AVE (STATE ROUTE 120)	-	-	-	No long term impacts anticipated	0.971	0.951	0	WPCP	E	5/7/2021	5/16/2022	7/17/2023	9/7/2023
156	10-38220	MER	165	0	11.7	5	MERCED 165 REHAB-ROADWAY REHAB-REHABILITATE THE EXISTING ASPHALT CONCRETE ROADWAY IN MERCED COUNTY ON SR 165 BETWEEN I-5 AND HENRY MILLER ROAD	-	401	404	No long term impacts anticipated	1	TBD	TBD	SWPPP	TBD	4/30/2021	7/1/2023	7/5/2024	7/5/2026
157	10-3A130_	MER	140	38.1	38.6	5	PARKWAY INTERCHANGE - CONSTRUCT INTERCHANGE AND OVERHEAD - IN MERCED COUNTY IN MERCED ON STATE ROUTE 140 FROM .65 MILES EAST OF SANTA FE AVENUE TO 0.15 MILES WEST OF KIBBY ROAD	-	401	-	No long term impacts anticipated	5.2	1.8	650	SWPPP	C	1/27/2009	3/28/2011	8/2/2018	7/31/2020
158	10-3A720_	MER	99	20.5	24.3	5	MER-99 ROADWAY PAVEMENT REHABILITATION – PAVEMENT RESURFACING & RESTORATION – IN MERCED COUNTY IN AND NEAR ATWATER FROM BUHACH OVERCROSSING TO 0.8 MILE SOUTH OF WESTSIDE BOULEVARD UNDERCROSSING	Atwater Canal	-	-	No long term impacts anticipated	34	27.8	61	SWPPP	E	11/3/2017	10/19/2018	9/20/2019	9/20/2021
159	10-3A730_	TUO	120	12.1	16.3	5	CHINESE CAMP CAPM - SHOULDER WIDENING, DIGOUT AND REPAIR OF LOCALIZED AREAS OF SEVERE FAILURE, RUBBERIZED ASPHALT CONCRETE OVERLAY, MINOR REALIGNMENTS - IN TUOLUMNE AND STANISLAUS COUNTY, NEAR OAKDALE AND SONORA, FROM WEST OF LANCASTER ROAD TO MOCCASIN CREEK BRIDGE. REHABILITATE PAVEMENT.	Don Pedro Reservoir Tulloch Reservoir, Stanislaus River	TBD	NA	No long term impacts anticipated	0.33	0	0	WPCP	E	12/24/2015	1/25/2017	1/31/2018	12/3/2018
160	10-40160_	TUO	108	16.1	18.1	5	WEST LONG BARN CAPM - PAVEMENT PRESERVATION - IN TUOLUMNE COUNTY NEAR LONG BARN ON STATE ROUTE 108 FROM LYONS DAM ROAD TO 0.1 MILE WEST OF EAST LONG BARN CONNECTION	-	NA	NA	No long term impacts anticipated	0.5	0	0	WPCP	E	8/14/2013	7/5/2017	3/14/2018	7/6/2018
161	10-40350_	STA	132	11.3	14.7	5	SR 132 WEST EXPRESSWAY - CONSTRUCT 4 LANE EXPRESSWAY ON NEW ALIGNMENT AND CONSTRUCT SOUNDWALL - IN STANISLAUS IN MODESTO ON NEW ALIGNMENT FROM DAKOTA AVENUE TO STATE ROUTE 99	San Joaquin River, Tuolumne River	NA	NA	No long term impacts anticipated	67	TBD	TBD	SWPPP	C	12/20/2017	8/1/2018	3/1/2018	12/1/2020
162	10-41911_	MER	152	22.3	25.8	5	LOS BANOS BYPASS SEGMENT I - CONSTRUCT FOUR-LANE FREEWAY BYPASS ON SIX-LANE RIGHT OF WAY WITH SIGNALIZED AT-GRADE INTERSECTIONS AT STATE ROUTE 165 AND EAST STATE ROUTE 152 - IN MERCED COUNTY IN LOS BANOS FROM STATE ROUTE 165 TO STATE ROUTE 152 NEAR SANTA FE ROAD	-	401	-	No long term impacts anticipated	>5	TBD	TBD	SWPPP	C	6/25/2007	1/18/2019	5/15/2020	12/31/2021
163	10-46210	TUO	108	18.9	24.5	5	LONG BARN CAPM--	Herring Creek, South Fork Stanislaus River	-	-	No long term impacts anticipated	0.5	TBD	TBD	WPCP	E	8/1/2020	4/9/2021	5/1/2022	7/1/2024

Treatment Control Status Legend	
BMP Device Types:	
BIOSTP	Biofiltration Strips
BIOSWL	Biofiltration Swales
C	Under Consideration
CNTBOX	Gross Solids Removal Devices (Inclined Screen)
DETBAS	Detention Basins
DPPIA	Design Pollution Prevention Infiltration Area*
DWFD	Dry Weather Flow Diversion
E	Exempt
INDBAS	Infiltration Basins*
INDTRE	Infiltration Trench*
LNGTBE	Gross Solids Removal Devices (Linear Radial)
MCTT	Multi-Chambered Treatment Trains
MF-ADS	Austin Sand Filters
MF-DSF	Delaware Sand Filters
Other	Other (specify type)
SA	Stabilization Areas
TRCSND	Traction Sand Traps
WETBAS	Wet Basins

\* Water quality volume infiltrates within the right of way. (When this is demonstrated for at least 90% of the WQV, other types of treatment BMPs are not considered unless there is a location-specific requirement.)

Table 6-2 lists the planned maintenance projects that will disturb soil.

Table 6-2: District 10 Anticipated Significant Road Maintenance Activities

No.	Co.	Route	Beg PM	End PM	Regional Board	Description	Water Bodies Affected <sup>10</sup>	Other Regional Water Board Permits Required <sup>11</sup>	Potential and Actual Impacts of Project's Discharge <sup>12</sup>	Disturbed Soil Area (acres)	Area of New Impervious Surface (acres)	Percentage of New Impervious Surface to Existing Impervious Surface	Description of Construction Controls (SWPPP/WPCP/ TBD/NA) <sup>13</sup>	Post-Construction Treatment Control Type, Quantity <sup>14</sup>	Start Date	Completion Date
No planned road maintenance activities anticipated.																

Treatment Control Status Legend	
BMP Device Types:	
BIOSTP	Biofiltration Strips
BIOSWL	Biofiltration Swales
C	Under Consideration
CNTBOX	Gross Solids Removal Devices (Inclined Screen)
DETBAS	Detention Basins
DPPIA	Design Pollution Prevention Infiltration Area*
DWFD	Dry Weather Flow Diversion
E	Exempt
INDBAS	Infiltration Basins*
INDTRE	Infiltration Trench*
LNGTBE	Gross Solids Removal Devices (Linear Radial)
MCTT	Multi-Chambered Treatment Trains
MF-ADS	Austin Sand Filters
MF-DSF	Delaware Sand Filters
Other	Other (specify type)
SA	Stabilization Areas
TRCSND	Traction Sand Traps
WETBAS	Wet Basins

\* Water quality volume infiltrates within the right of way. (When this is demonstrated for at least 90% of the WQV, other types of treatment BMPs are not considered unless there is a location-specific requirement.)

<sup>10</sup> Receiving waters within or adjacent to maintenance activity designated as “303(d) (constituent type).” Activity adjacent to Drinking Water Reservoir or Ground Water Recharge Facilities designated as “DW.”

<sup>11</sup> Regional Water Board Permits required other than Construction General Permit, such as Clean Water Act Section 401 water quality certification, Waiver of Discharge Requirements, Dewatering Permits, Bridge Painting WDRs, etc.

<sup>12</sup> This information may come from the Water Quality Assessment Report prepared for each project, a Water Quality Technical Memorandum, or other document that evaluates the water quality impacts of a project.

<sup>13</sup> A description of the Construction Controls is available in the project’s Storm Water Pollution Prevention Plan (SWPPP), Water Pollution Control Plan (WPCP), is To Be Determined (TBD) if the Disturbed Soil Area is unavailable, or is Not Applicable (NA) because there is no Disturbed Soil Area associated with the project.

<sup>14</sup> Treatment Control Status identified by: device type/number of devices, exempt (“E”), or under consideration (“C”). See Treatment Control Status Legend below for device type abbreviations.



Table 6-3 lists the District’s planned monitoring activities.

***Table 6-3: District 10 Monitoring Activities***

<b>Statewide Monitoring Program Activities</b>
<b><i>ASBS Core Monitoring Sites</i></b>
<ul style="list-style-type: none"><li>• District sites include the following:<ul style="list-style-type: none"><li>○ NA</li></ul></li></ul>
<b><i>ASBS Ocean Receiving Water and Reference Monitoring Sites</i></b>
<ul style="list-style-type: none"><li>• District sites include the following:<ul style="list-style-type: none"><li>○ NA</li></ul></li></ul>

This page was intentionally left blank.

## **7 Region-Specific Activities**

---

Section 7 of the DWP identifies the applicable region-specific activities that District 10 has planned for the fiscal year 2019-20 to comply with Attachment V of the Caltrans Statewide MS4 NPDES Permit.

### **Lahontan Region**

District 10 will comply with the vegetation removal or existing ground surface disturbance prohibition requirements within the Lahontan Region as described in Attachment V of the Caltrans Statewide MS4 NPDES Permit.

### **Project Review Requirements**

District 10 will comply with the project review requirements within the Lahontan Region as described in the Caltrans Statewide MS4 NPDES Permit.

This page was intentionally left blank.

## **8 DWP Noncompliance and Improvements**

---

Section 8 of the DWP identifies the deviations that occurred from the prior DWP that resulted or will result in noncompliance with the Conformed NPDES Permit or SWMP. In addition, it describes the improvements that were performed in response to the incidents of noncompliance. No anticipated DWP incidents of noncompliance or resulting improvements were identified for the District.

This page was intentionally left blank.