



CALLEGUAS CREEK & SANTA CLARA RIVER WATERSHEDS

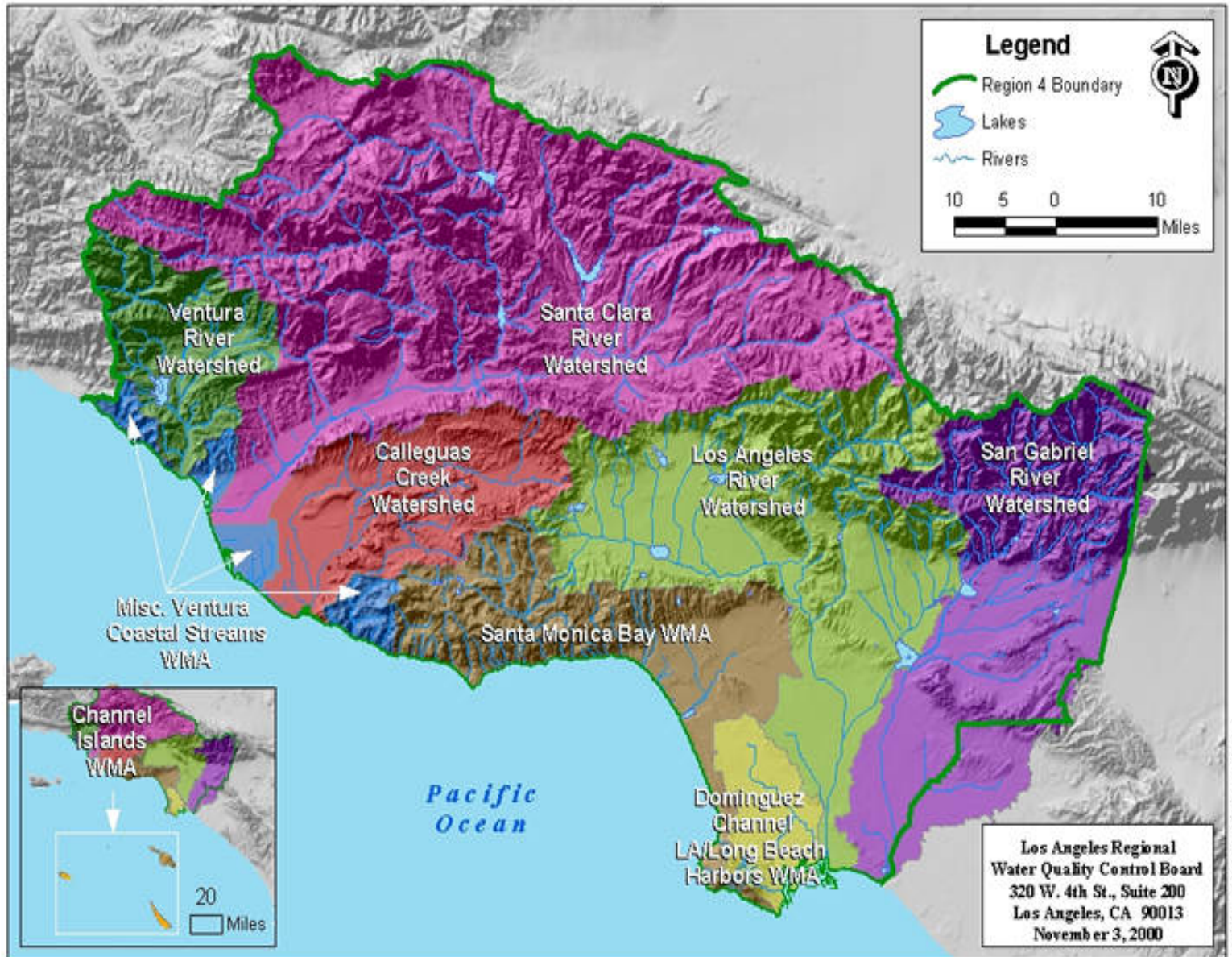
J. Michael Lyons

**Los Angeles Regional Water
Quality Control Board**

mlyons@waterboards.ca.gov

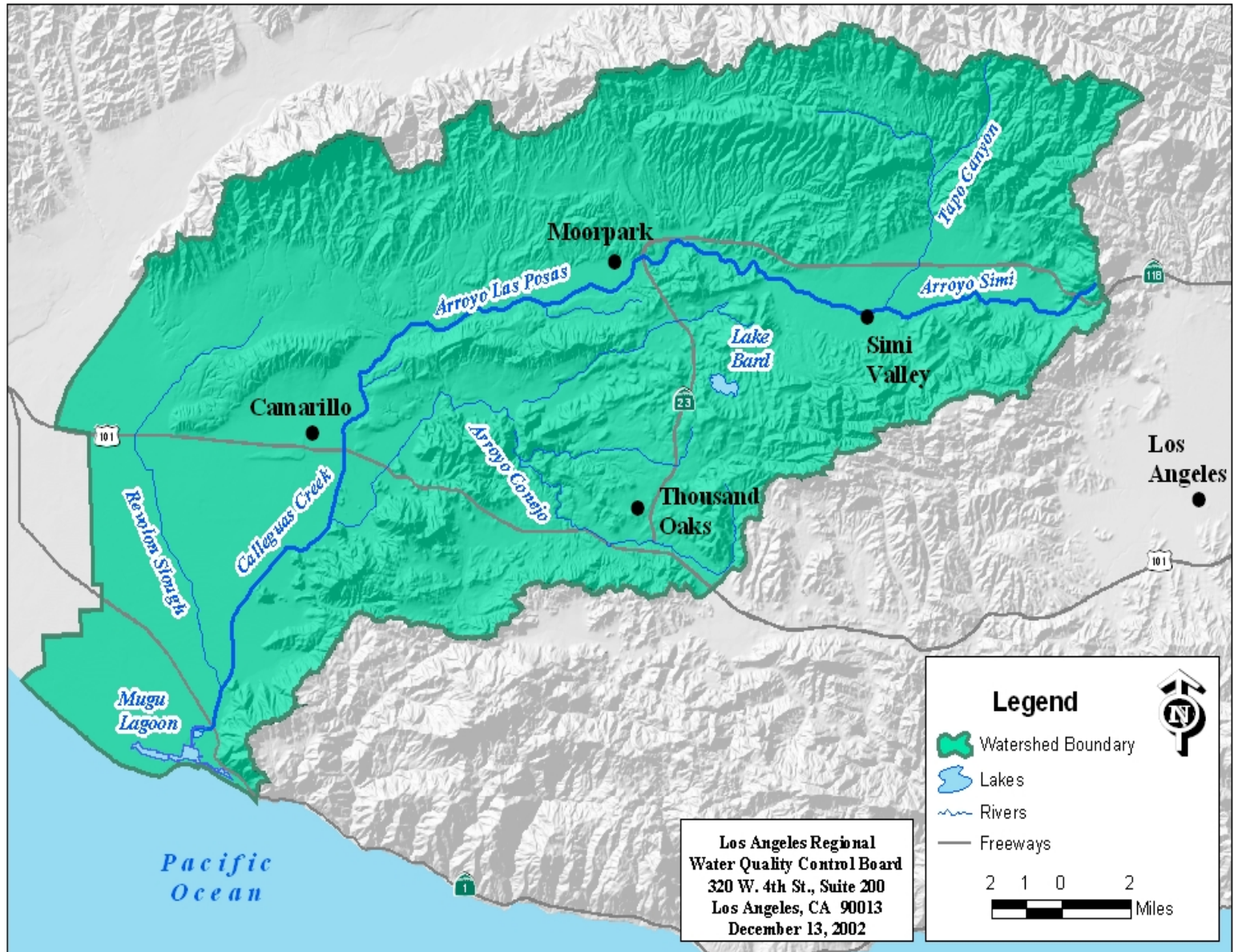


Los Angeles Regional Water Quality Control Board Watersheds, Lakes, and Rivers





Calleguas Creek Watershed



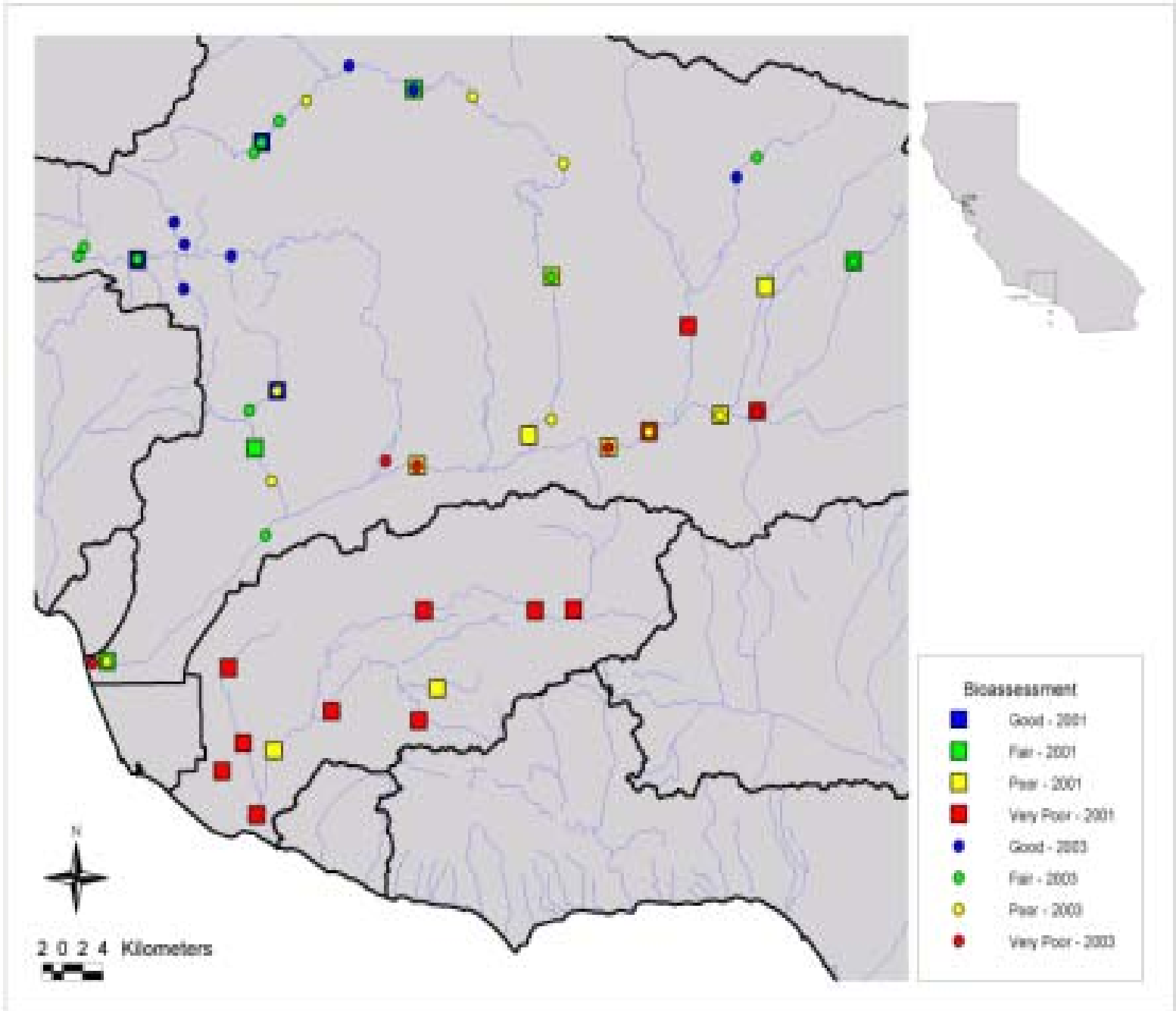


CALLEGUAS CREEK WATERSHED

- ∞ Calleguas Creek, Revolon Slough, Mugu Lagoon
- ∞ limited urban development
- ∞ agricultural activities
- ∞ impairments for nutrients, chlorides, organics (DDT, PCBs, chlordane & others), metals (Ni, Cu, Zn, Hg, Se), coliform, siltation

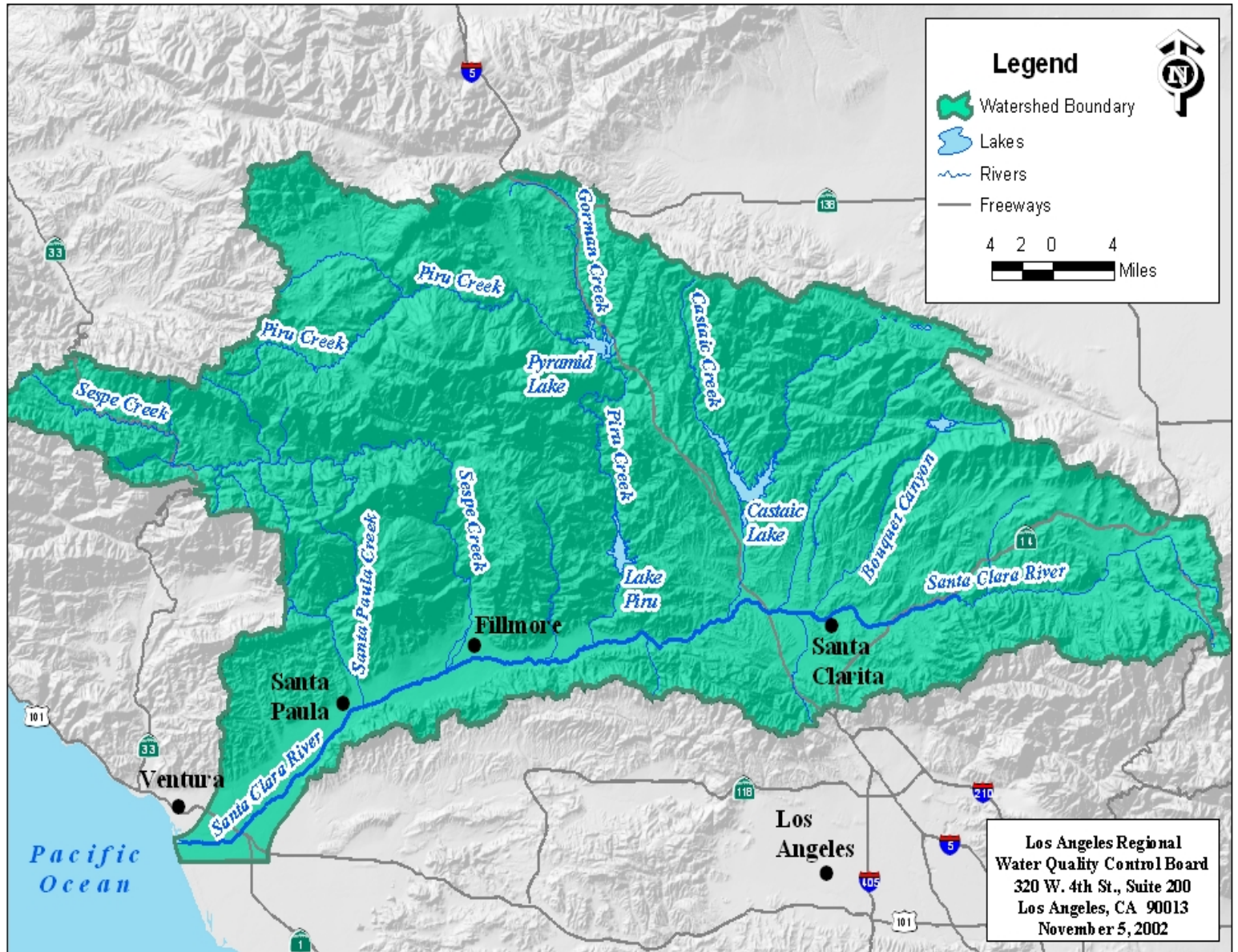
CALLEGUAS WATERSHED BIOASSESSMENT

- ∞ Directed sampling approach
- ∞ 11 stations sampled in 2001
- ∞ 9 rated as "very poor" & 2 rated as "poor"





Santa Clara River Watershed





SANTA CLARA RIVER WATERSHED

- ∞ Largest relatively natural river system in Southern California (1200 square miles)**
- ∞ main stem of Santa Clara River is fairly urbanized**
- ∞ subwatershed tributaries are relatively undeveloped**
- ∞ impairments for ammonia, nitrates, chlorides, coliform**

SANTA CLARA RIVER WATERSHED BIOASSESSMENT

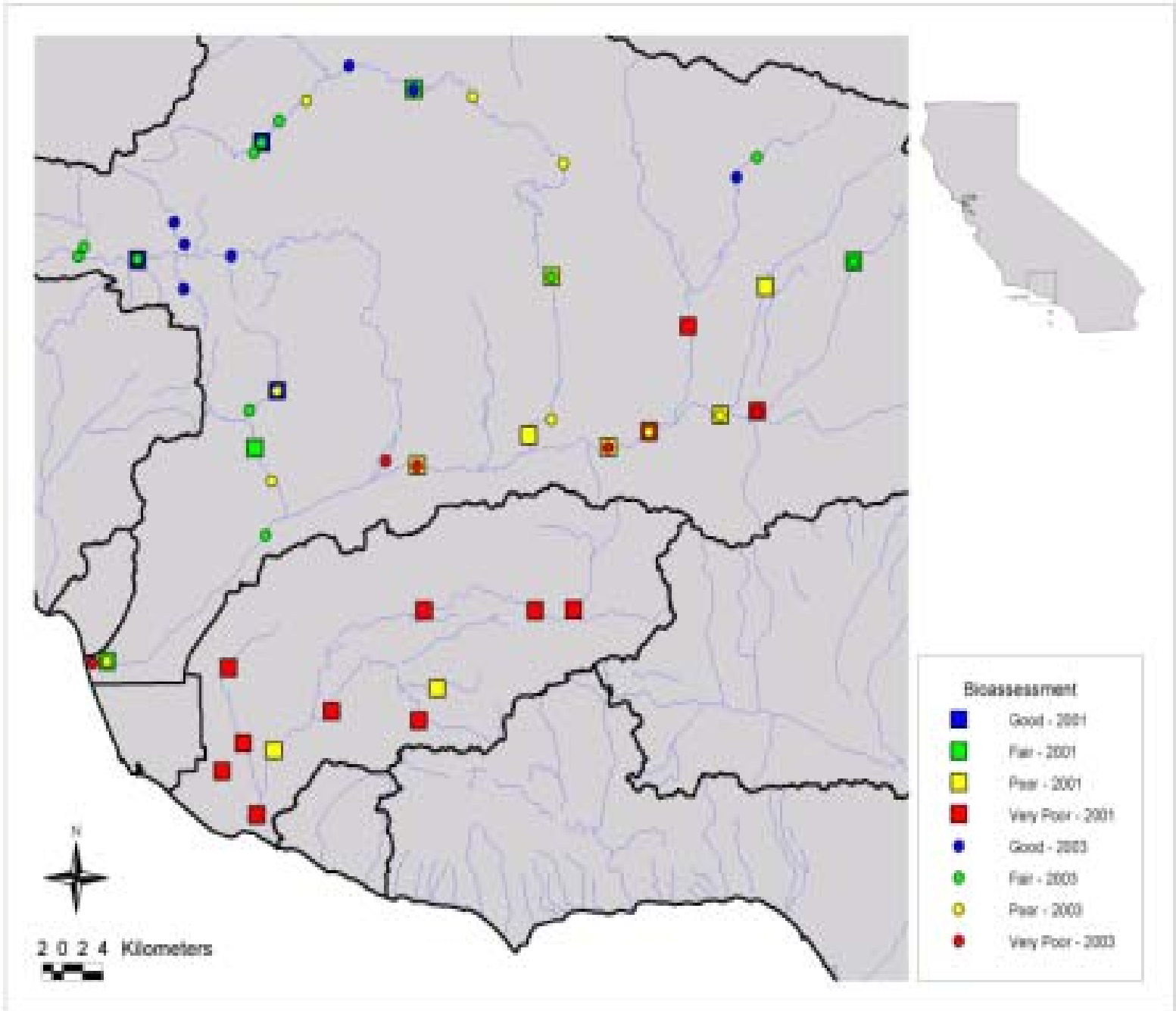
- ∞ Stratified random sampling approach in 2001/2003
- ∞ 30 random stations
- ∞ 6 directed stations at subwatershed outlets (Santa Paula, Sespe, Piru, Castaic, San Francisquito, Bouquet Canyon Creeks)

SANTA CLARA RIVER BIOASSESSMENT RESULTS

- ∞ @ 50% of the sites were "very poor" or "poor"
- ∞ most mainstem Santa Clara River sites were "very poor" or "poor"
- ∞ 5/6 of subwatershed outlets were "very poor" or "poor" (only Santa Paula Creek was "fair")

BIOASSESSMENT RESULTS (CONT)

- ∩ @ 50% of the sites were "fair" or "good"
- ∩ primarily located in upper portions of subwatersheds
- ∩ no sites were characterized as "very good"



CONCLUSIONS

- ∞ **Widespread degradation of Calleguas Creek Watershed**
- ∞ **More degradation in lower Santa Clara River than in upper subwatershed areas**
- ∞ **Widespread degradation (@50%)**
- ∞ **No pristine sites**

IBI Score

