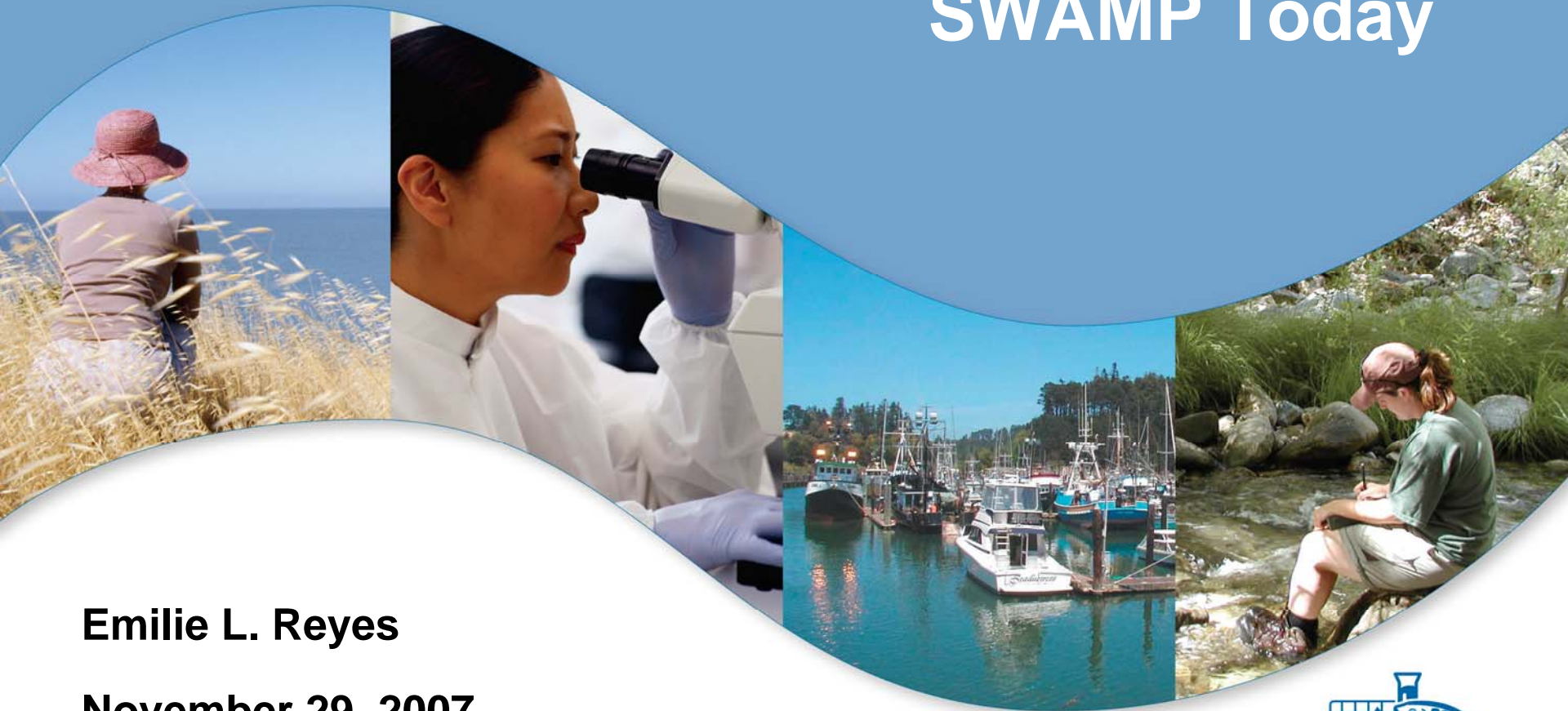


California's Surface Water Ambient Monitoring Program

SWAMP Today



Emilie L. Reyes

November 29, 2007



SWAMP



- The Surface Water Ambient Monitoring Program (SWAMP) is a relatively new program at the Water Boards, proposed in a Report to the Legislature in November 2000, and initiated in 2001.



SWAMP

- SWAMP's vision is that water quality be comprehensively measured to protect beneficial uses, and to evaluate our protection and restoration efforts.



SWAMP Strategy

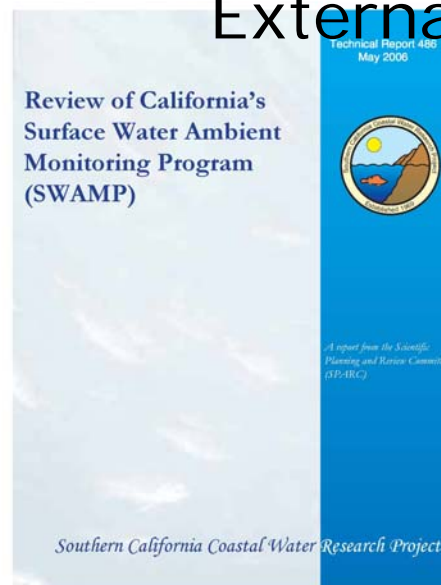


10 Elements of a State Monitoring & Assessment Program:

- Strategy
- Objectives
- Design
- Indicators
- Quality Assurance
- Data Management
- Data Analysis and Assessment
- Reporting
- Peer Review
- Program Support and Infrastructure

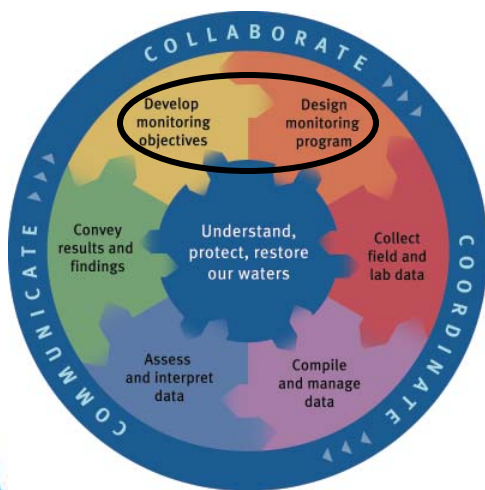
SWAMP Roundtable

External Review



SWAMP Planning Matrix

Water Body Type	Beneficial Use			
	Aquatic Life	"Swimmable"	"Fishable"	"Drinkable"
Wadeable Streams	<i>SWAMP Perennial Streams Survey (2005 – ongoing)</i>	<i>SWAMP-funded monitoring summary (2007-08)</i>		
Large Rivers	<i>EPA Flowing Waters Study (2008-2010)</i>	<i>SWAMP-funded monitoring summary (2007-08)</i>		
Lakes	<i>USEPA Lakes Survey (2007-2009)</i>	<i>SWAMP-funded monitoring summary (2007-08)</i>	<i>SWAMP Bioaccumulation Study (2007-09)</i>	
Coastal Waters, Bays & Estuaries	<i>ASBS / SQOs</i>	<i>Clean Beach Program</i>		NA
Wetlands	<i>CRAM</i>	NA	NA	NA



- *Monitor, assess, report on California's water quality at regional and statewide scales; create common framework for coordinating monitoring efforts; tool development (including biological indicators); collaborative efforts...*

...Business Plan



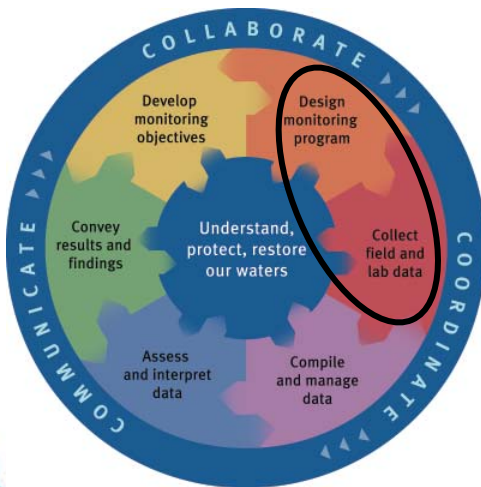


Address statewide monitoring needs

- Bioaccumulation in lakes and reservoirs
- Aquatic life use in perennial streams
- Pyrethroids in urban creeks

Address regional monitoring needs

- Regional monitoring



Data Management

- SWAMP-generated data in SWAMP database
- Standardized data formats
- Publicly accessible thru California Environmental Data Exchange Network <http://bdat.ca.gov>

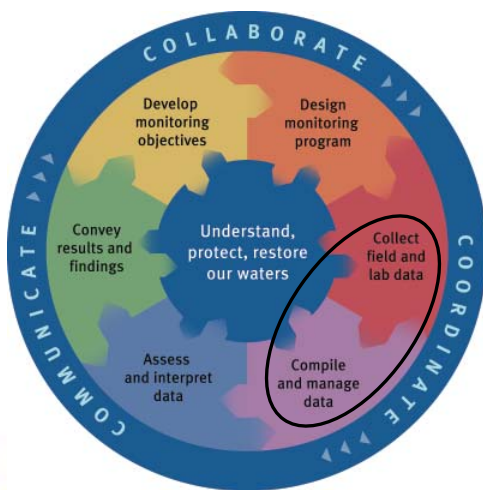


Quality Assurance

- Progressive and systems-based
- Quality assurance systems: QA Program Plan, SOPs, etc.

Tools for Data Comparability

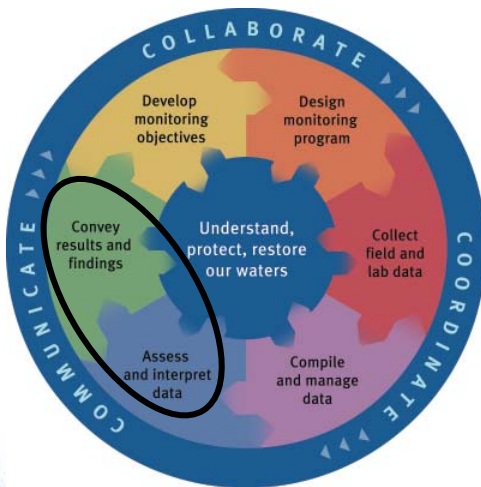
- available at www.waterboards.ca.gov/swamp
- next steps: tiering QA



Conveying information

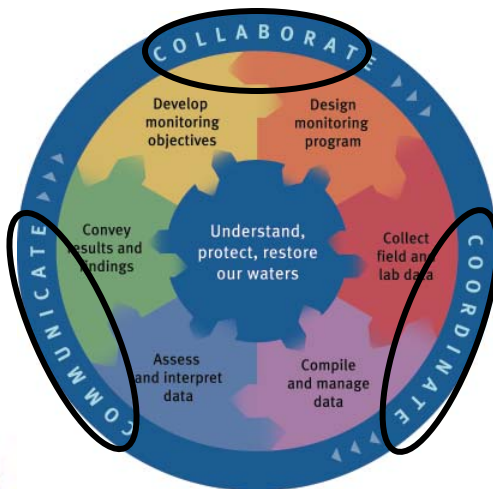
- Identify target audiences
- Develop communications strategy
 - communications coordinator
- Develop signature products
 - newsletters, fact sheets, assessment reports, listserv, website
 - <http://www.waterboards.ca.gov/swamp/reports.html>

Accessible information to
support sound decision-making





- Data Centers and California Environmental Data Exchange Network
 - Moss Landing Labs, SFEI, SCCWRP, UCDavis, DWR
- Assessments
 - bays and estuaries/SQO, estuarine wetlands/CRAM
- Surveys
 - Areas of Special Biological Significance, USEPA Lake Survey
- Monitoring Council





...the road goes on forever and the party never ends...

(Robert Earl Keene, Album: The Road Goes on Forever)



More on SWAMP at:



www.waterboards.ca.gov/swamp.ca.gov



Questions?

Emilie Reyes

916-341-5556;
ereyes@waterboards.ca.gov

