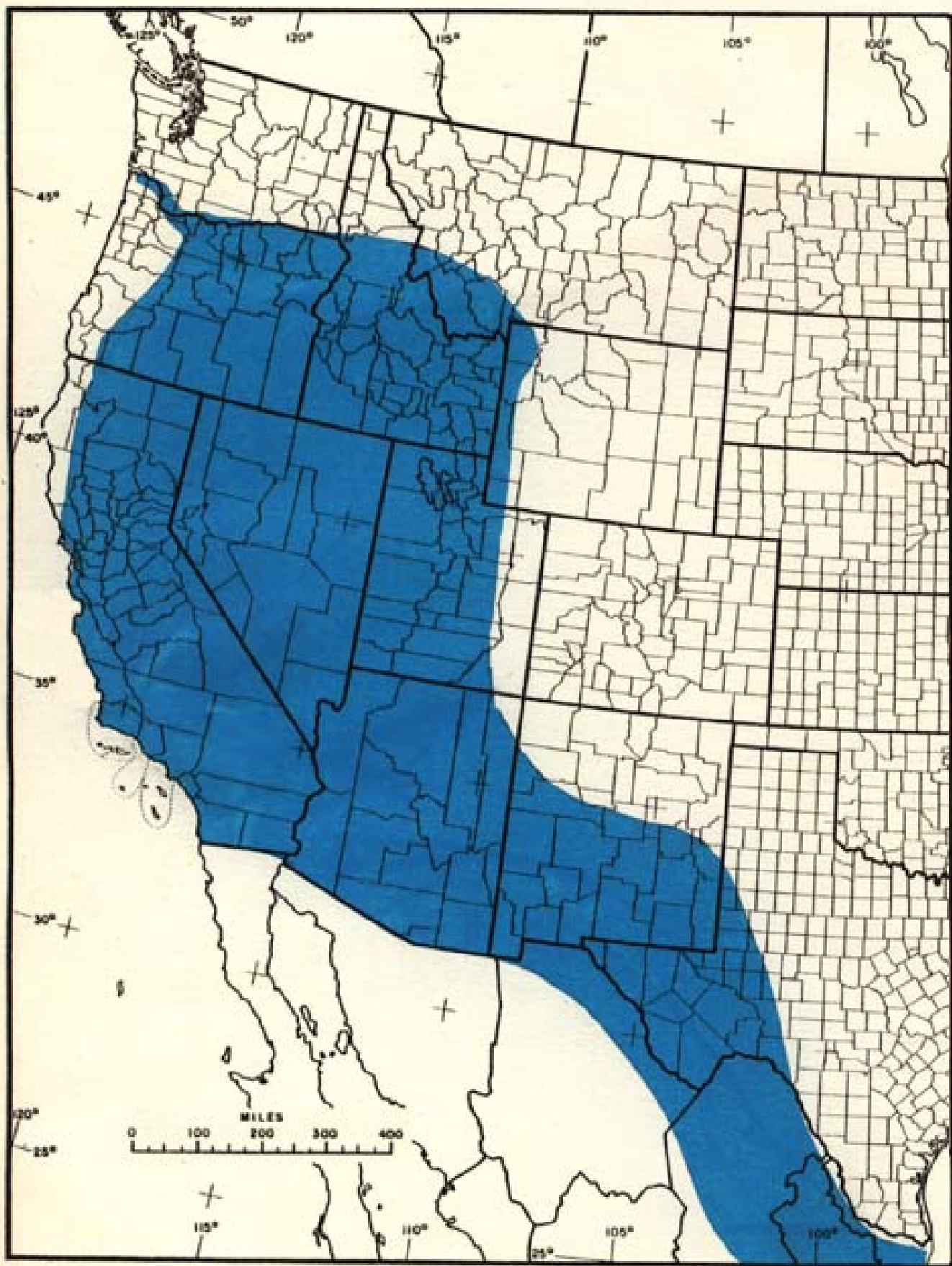
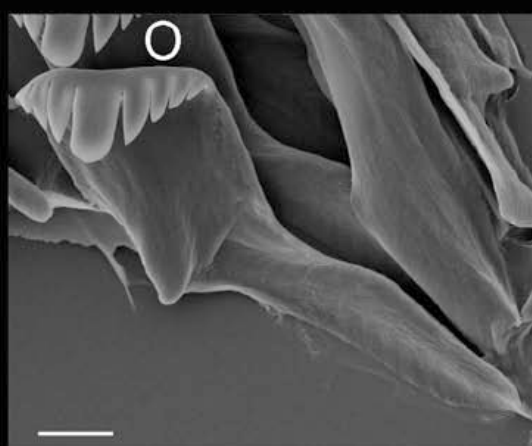
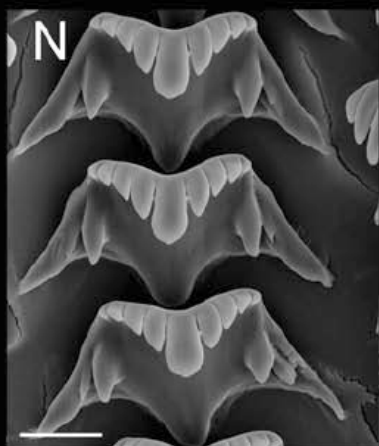
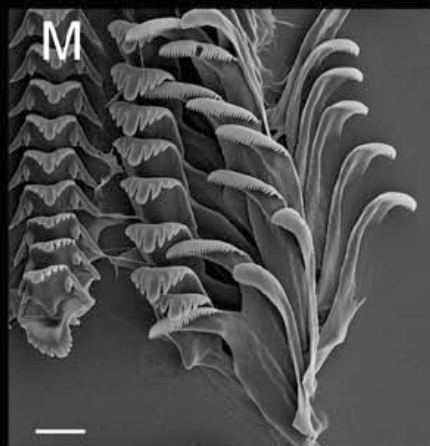
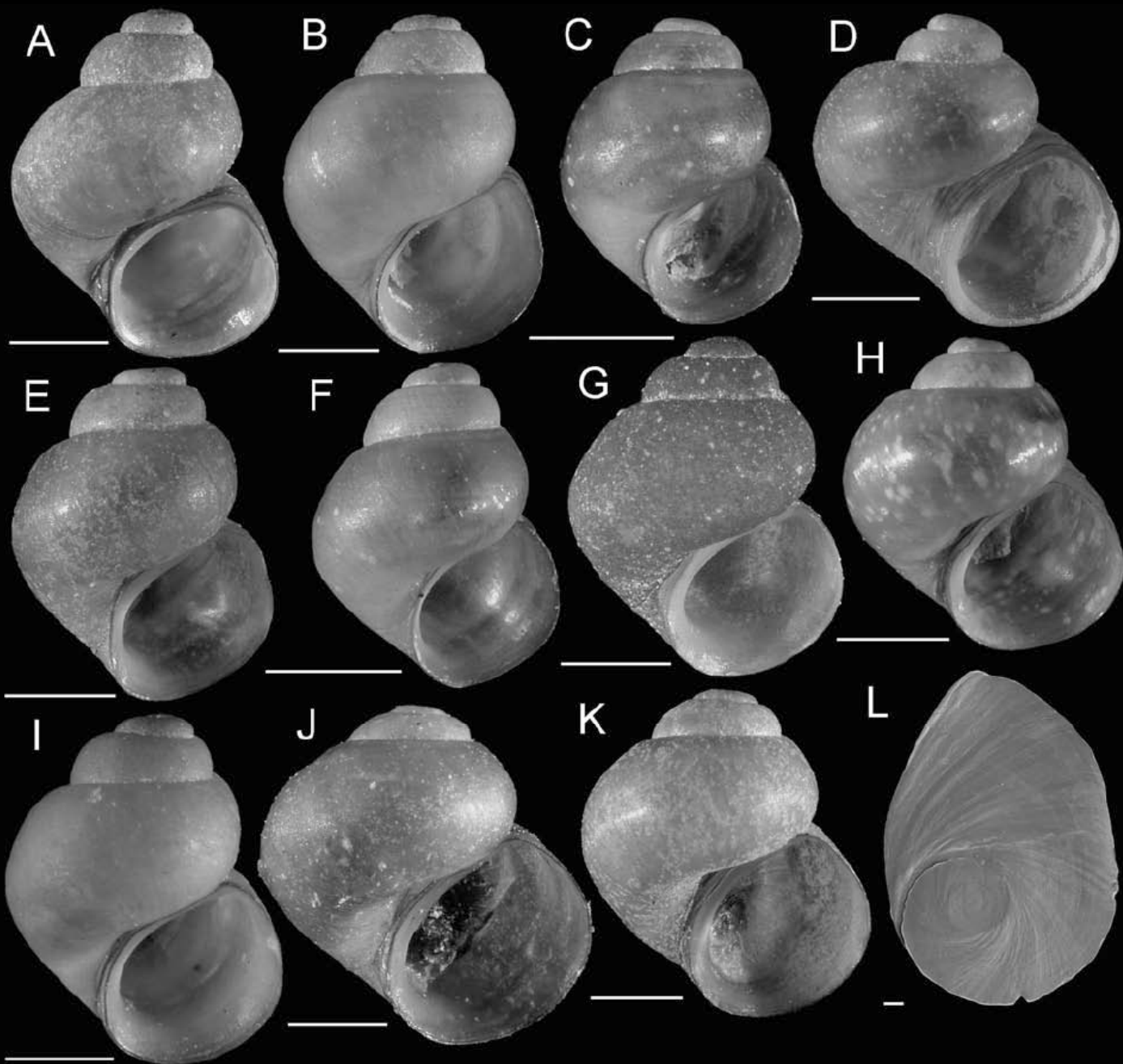


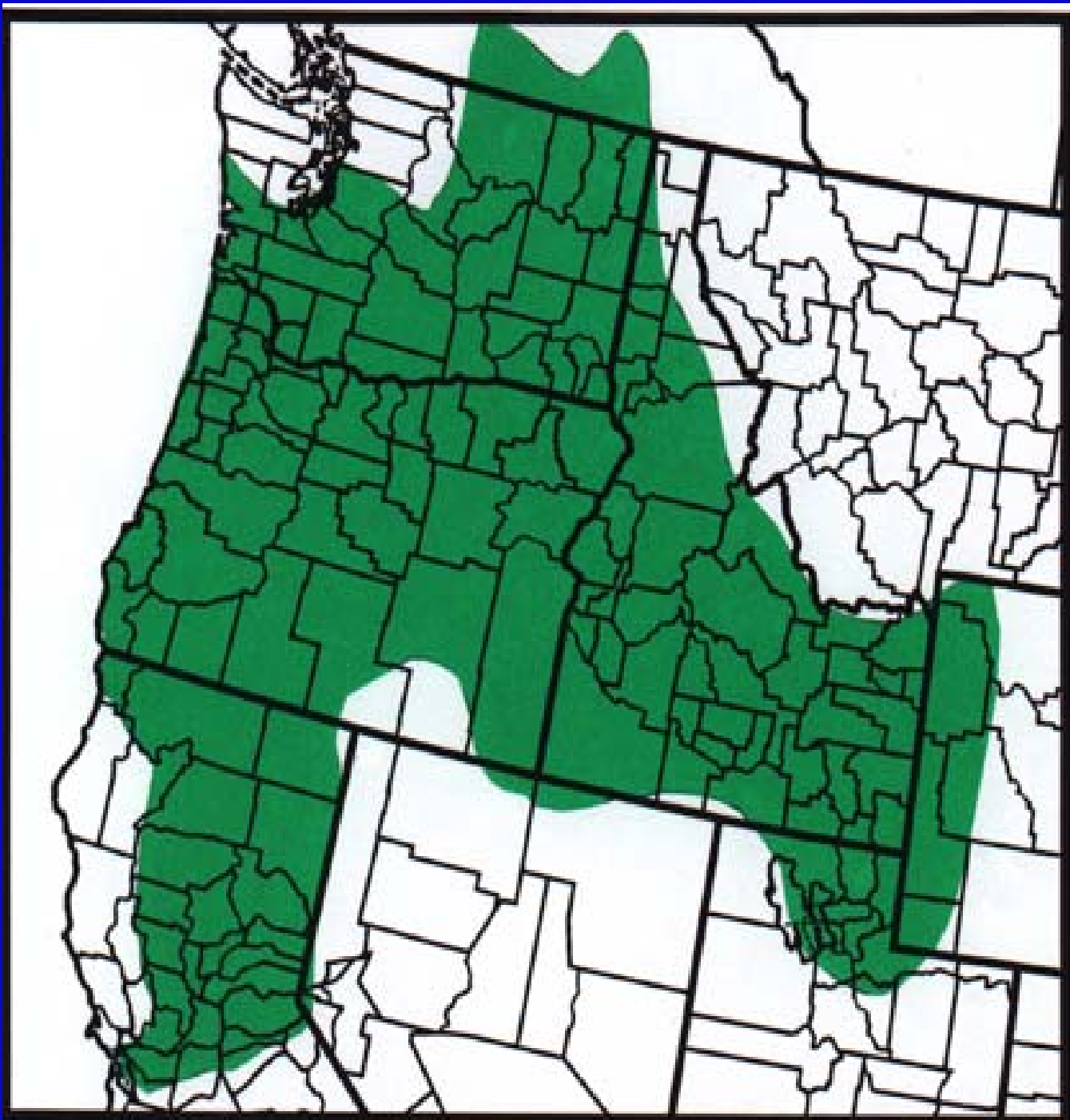
FRESHWATER MOLLUSK SURVEY IN NORTHERN SIERRA NEVADA NATIONAL FORESTS, CALIFORNIA

Terrence Frest
Edward Johannes
Deixis Consultants

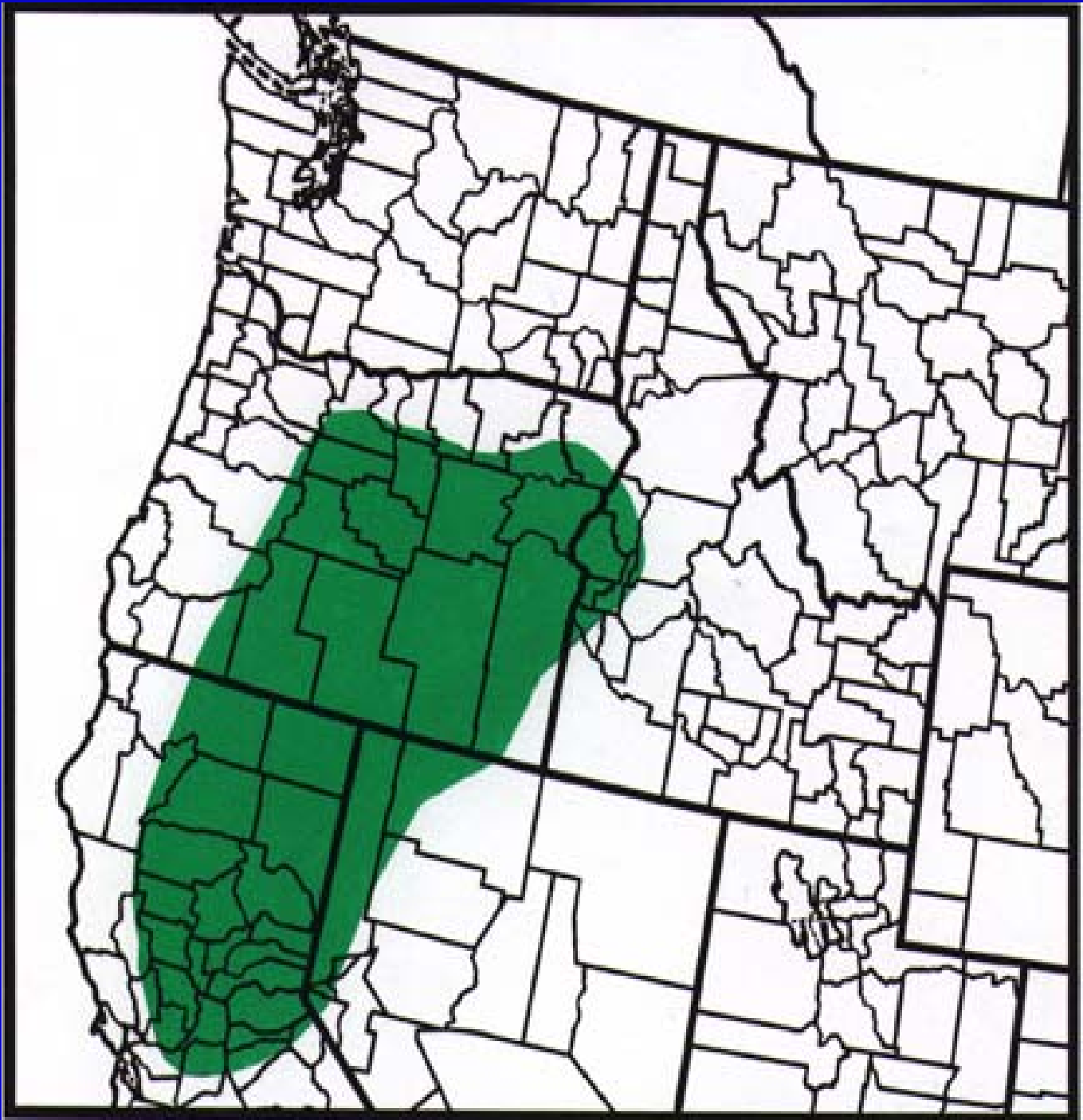


Distribution of *Pyrgulopsis*

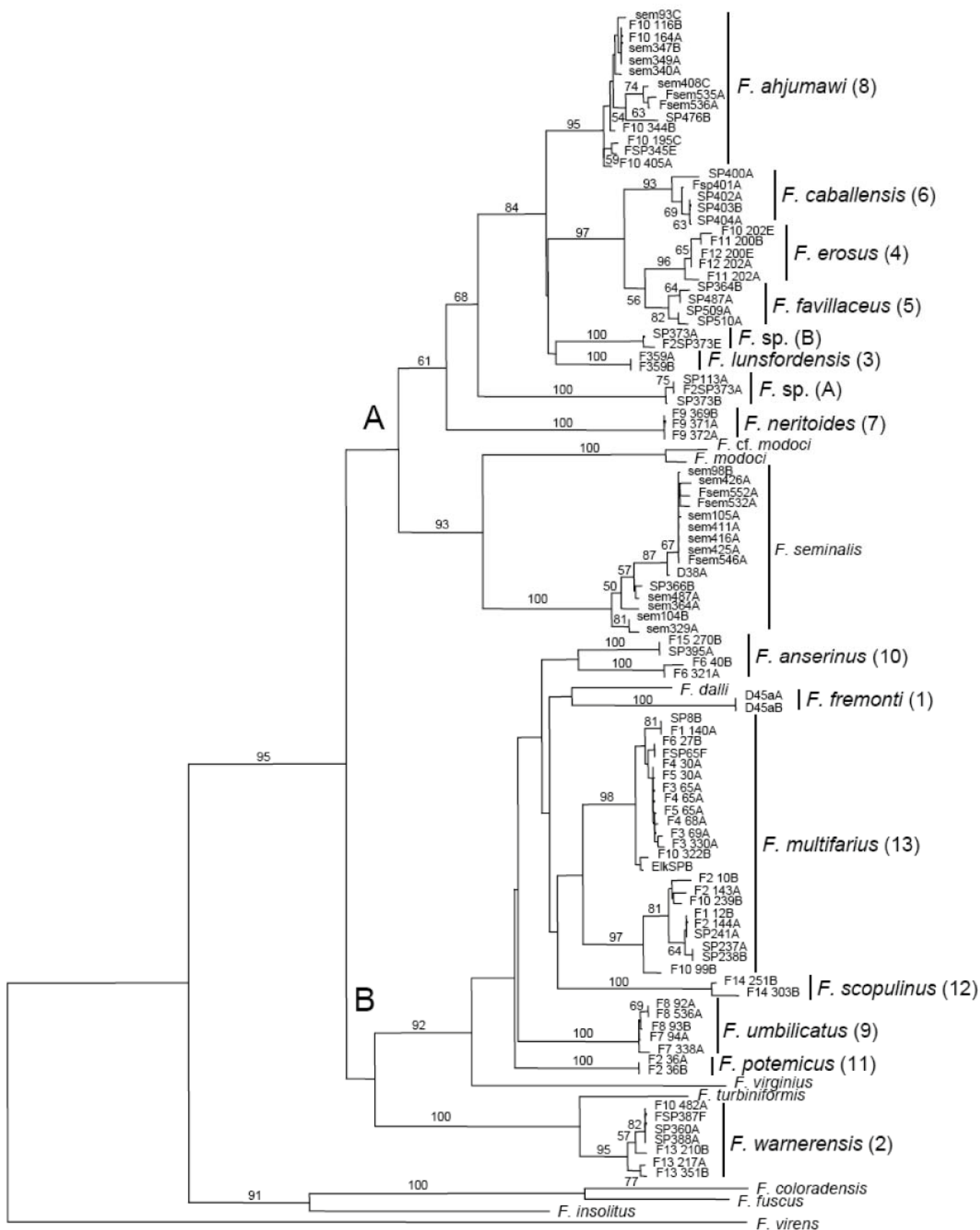


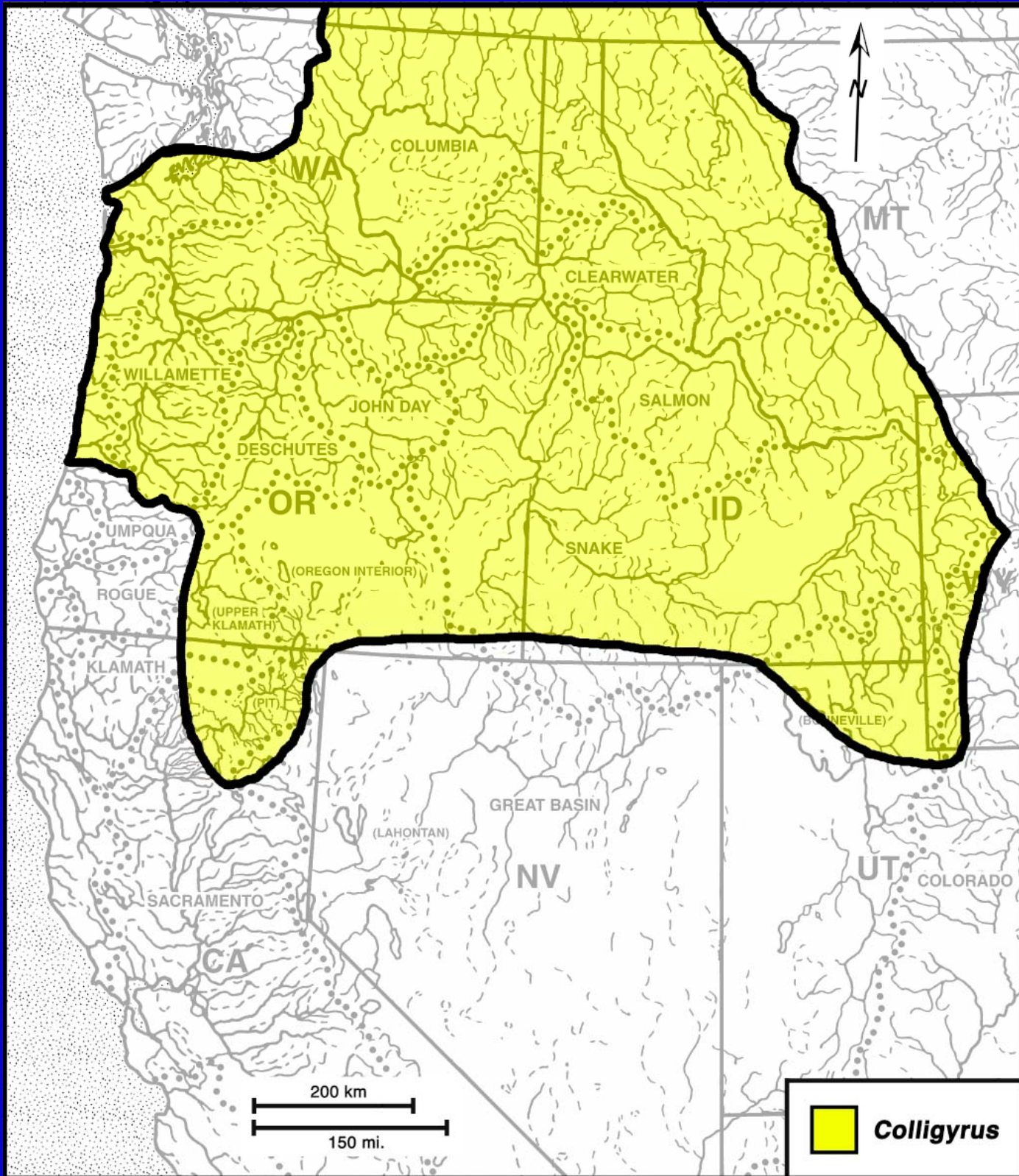


**DISTRIBUTION OF SPRINGSNAILS OF THE LARGE
FLUMINICOLA GROUPS**

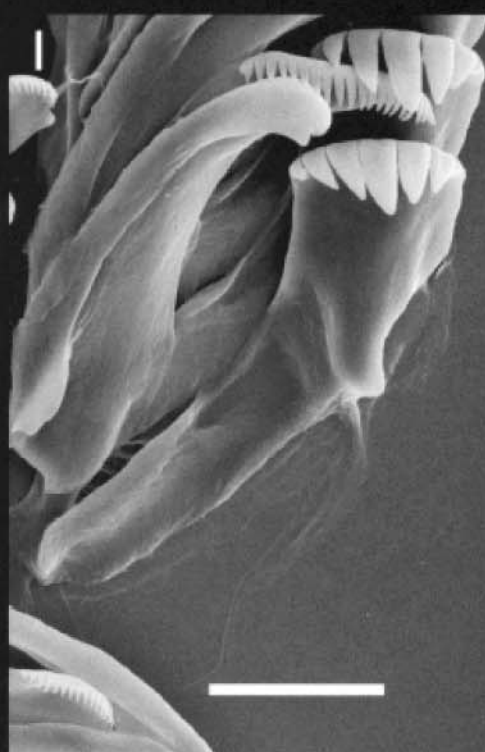
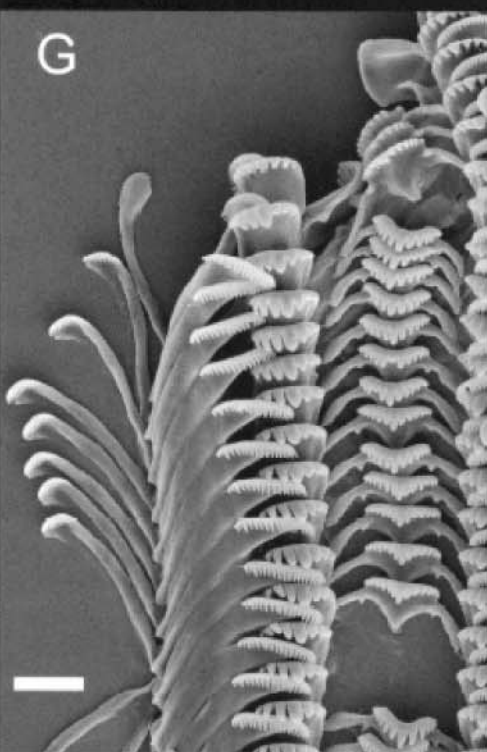
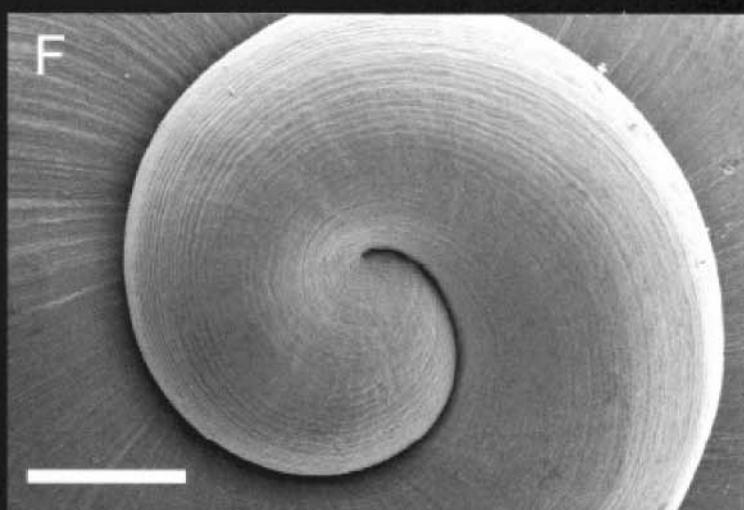
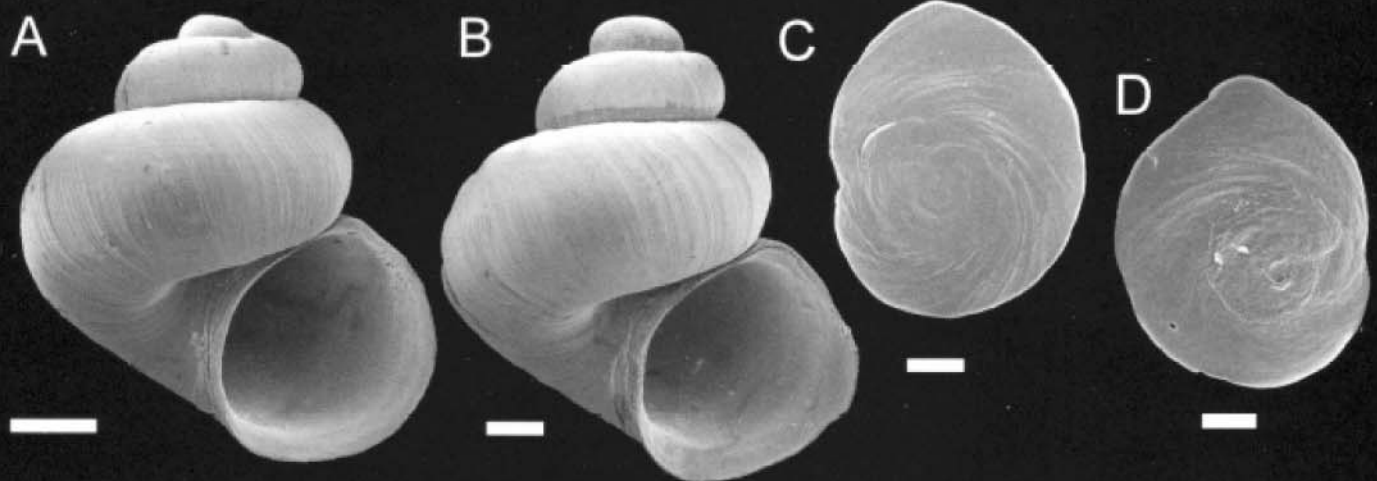


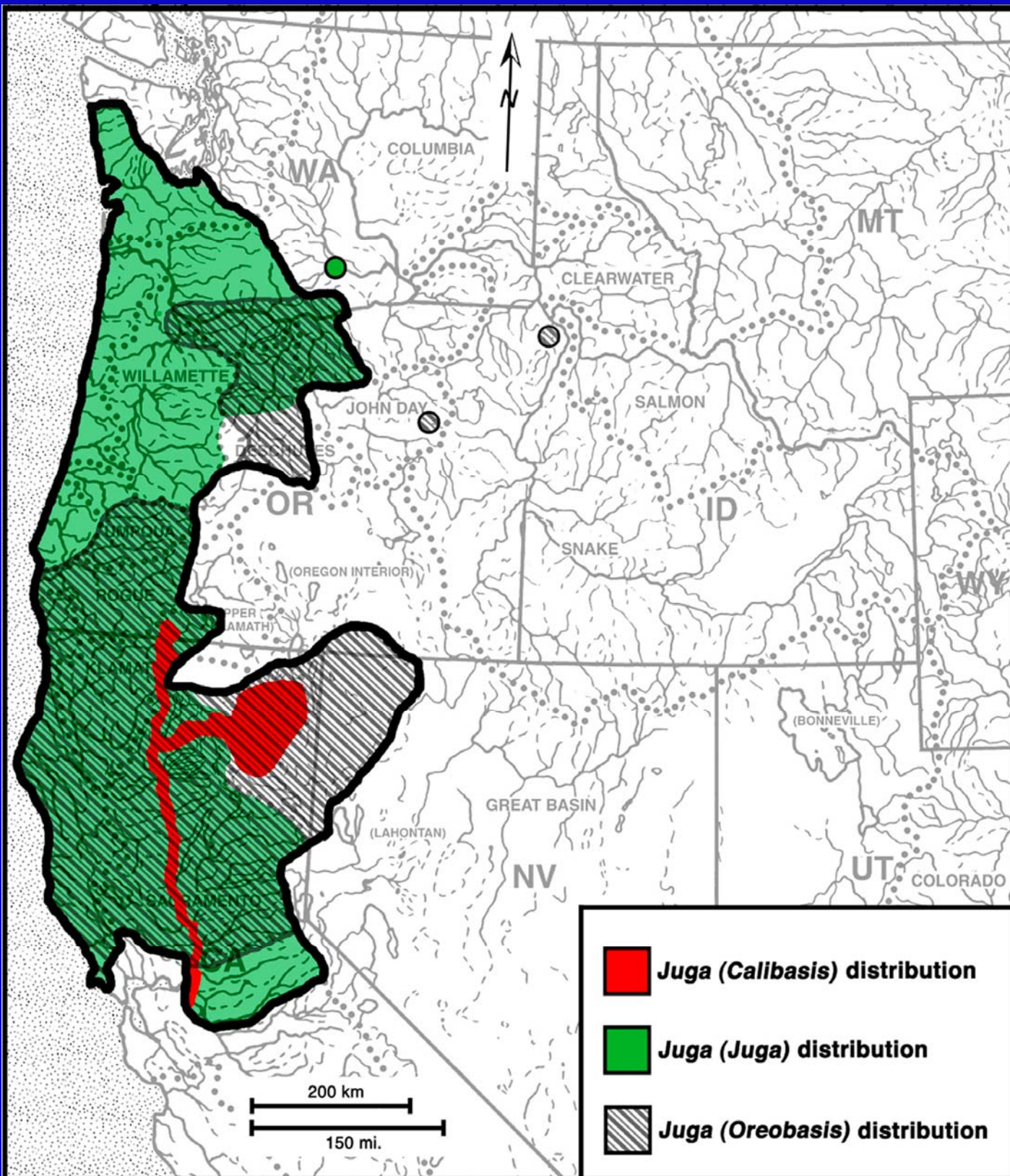
DISTRIBUTION OF THE SMALL *FLUMINICOLA* GROUPS



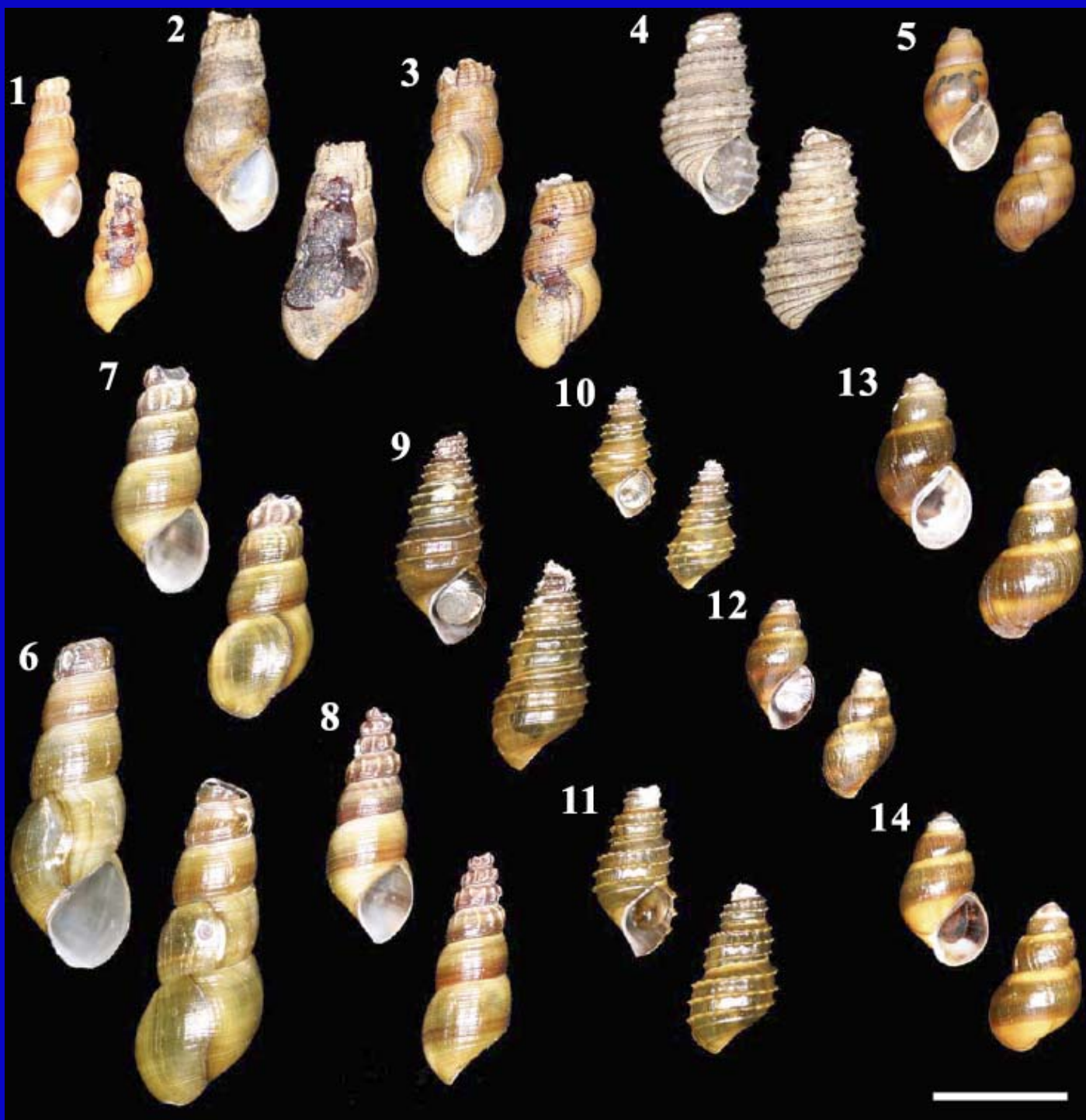


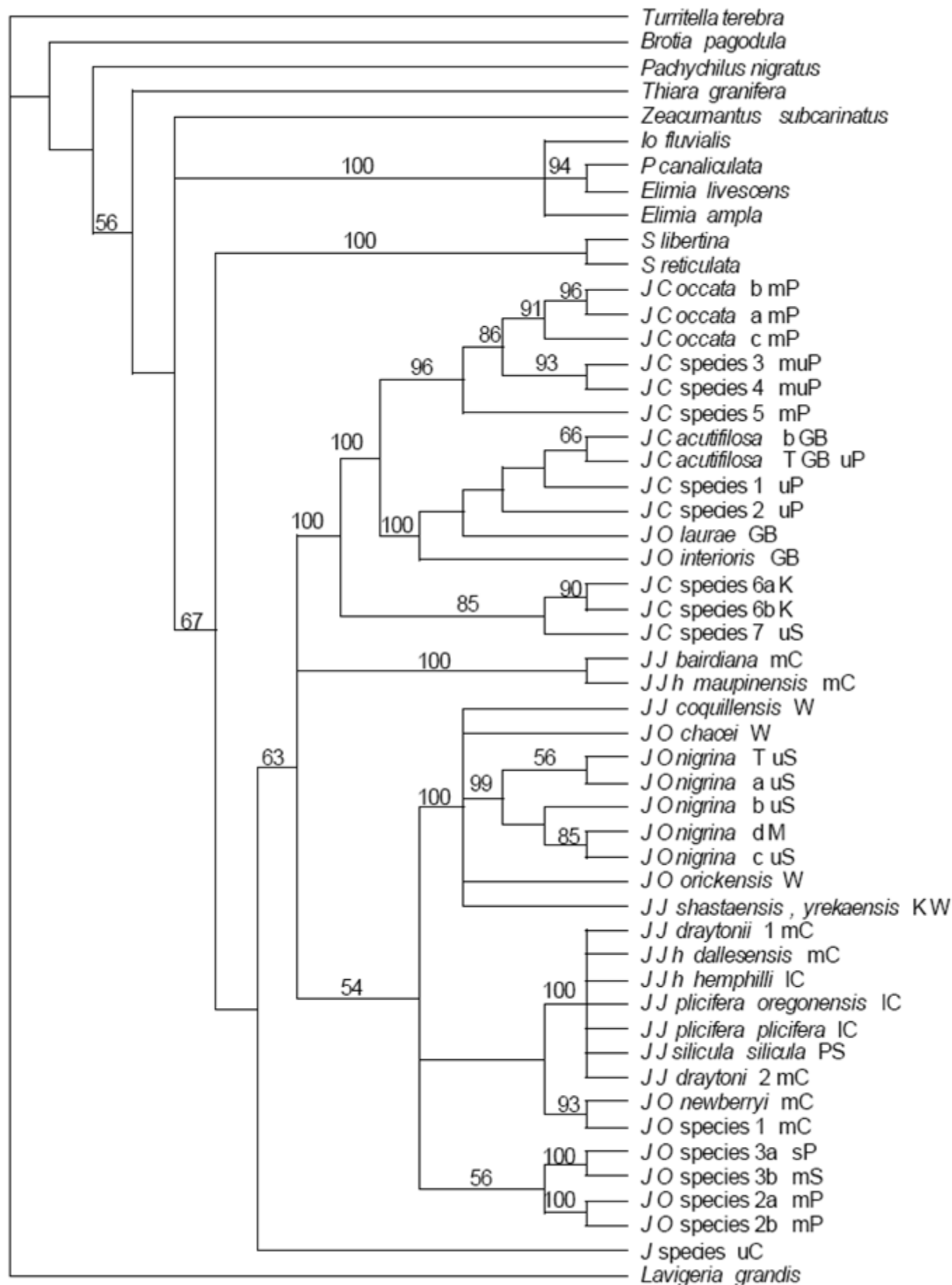
Distribution of the hydrobiid *Colligyrus* s.l.





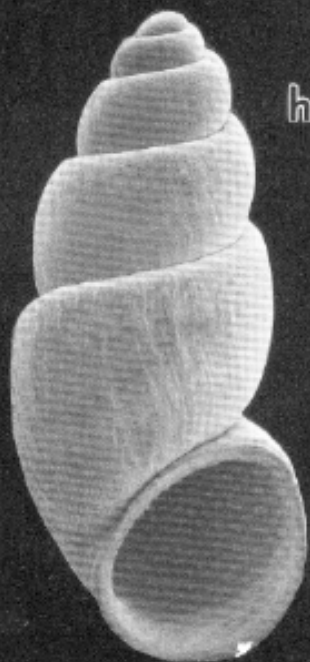
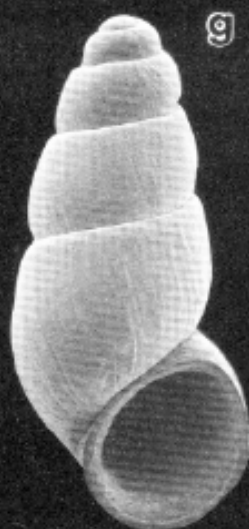
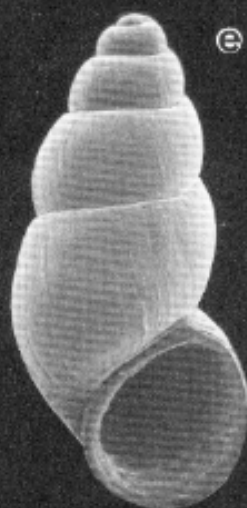
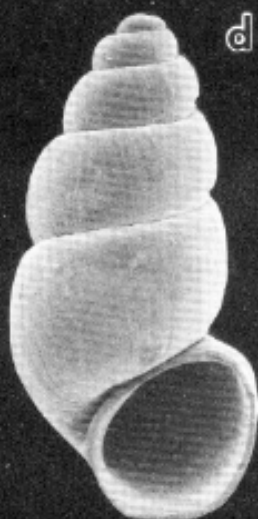
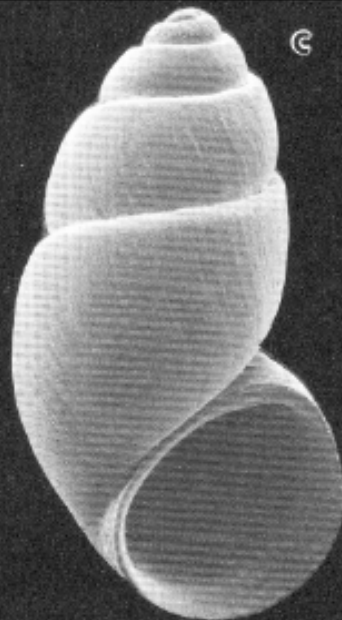
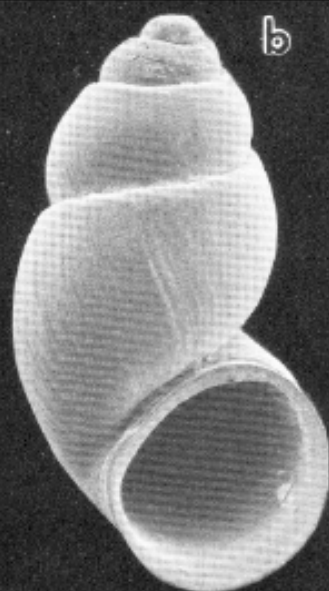
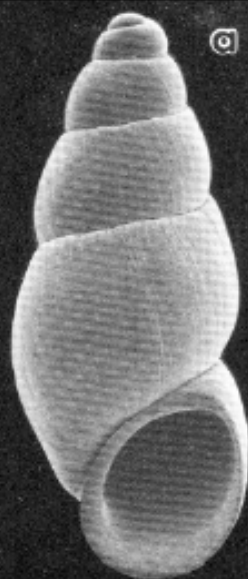
Distribution of the Northwest pleurocerid *Juga* s.l.







**DISTRIBUTION OF THE SPRINGSNAIL GENUS
*PRISTINICOLA***



Number of Sites Collected in Northern Sierra Nevada

Total 212

- 117 sites were collected in 2006
- 95 sites were collected in 2007

Habitats of Sites Collected in Northern Sierra Nevada

Habitats

- Springs=76% (160 sites)
- Spring runs=2% (5 sites)
- Creeks=21% (44 sites)
- Rivers=1% (3 sites)

Total Number of Sites with *Fluminicola* and *Juga* Collected in Northern Sierra Nevada

- 21% (45) of the sites with *Fluminicola*
(43 springs; 2 spring influenced creeks)
- 12% (25) of the sites with *Juga*
(16 springs ; 6 spring influenced creeks; 3 creeks
not spring influenced)

Public Lands Collected in Northern Sierra Nevada

NATIONAL FOREST SERVICE

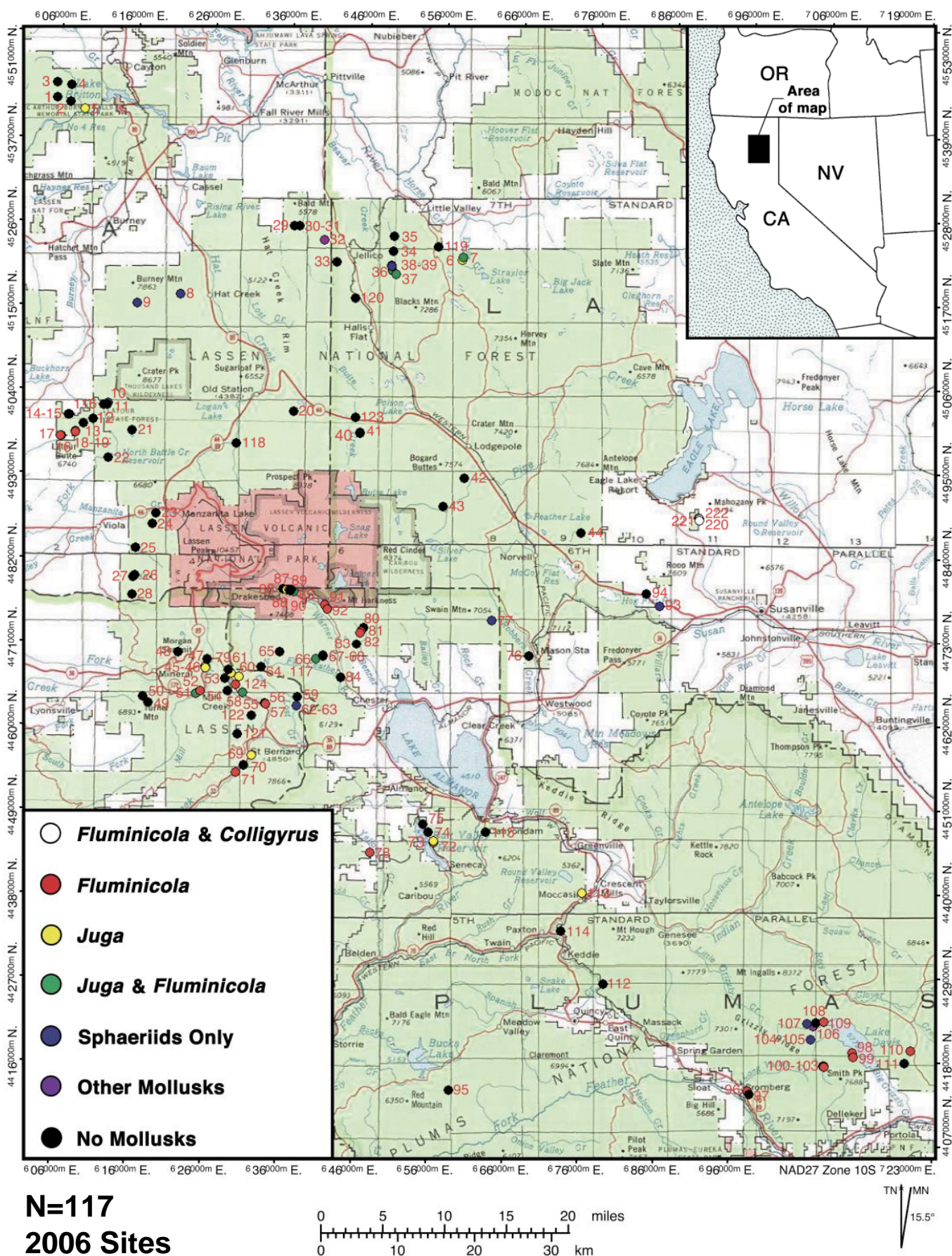
- Eldorado National Forest (32 sites)
- Eldorado National Forest inholdings (11 sites)
- Lassen National Forest (56 sites)
- Lassen National Forest inholdings (16 sites)
- Plumas National Forest (24 sites)
- Shasta-Trinity National Forest (5 sites)
- Tahoe National Forest (37 sites)
- Tahoe National Forest inholdings (7 sites)
- Toiyobe National Forest (2 sites)
- Lake Tahoe Basin Management Unit (13 sites)

NATIONAL PARK SERVICE

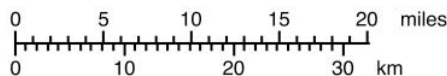
- Lassen Volcanic National Park (6 sites)

STATE OF CALIFORNIA

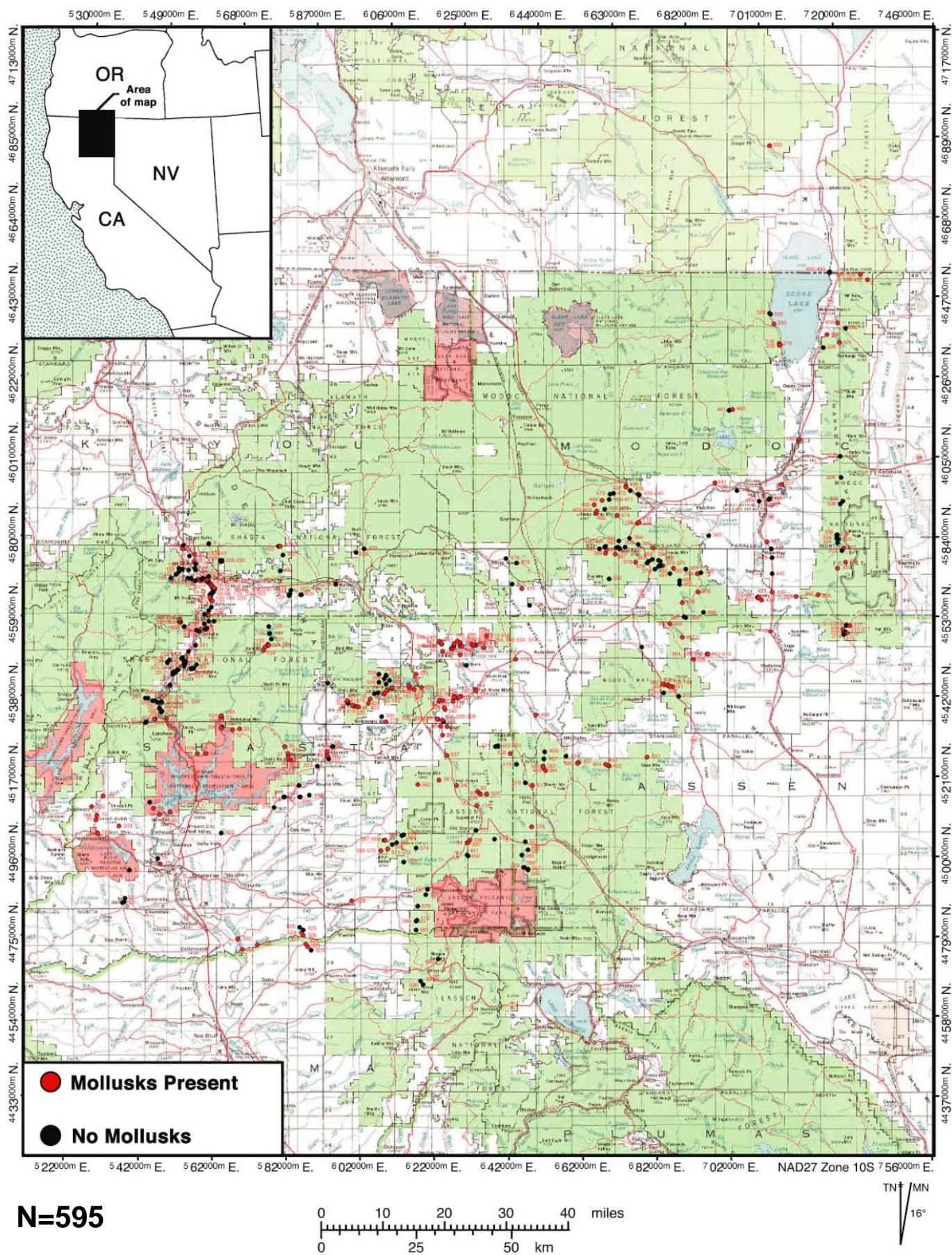
- DL Bliss State Park (1 site)
- Donner Memorial State Park (1 site)
- Latour Demonstration State Forest (5 sites)
- Sugar Point State Park (1 sites)
- Other (8 sites)

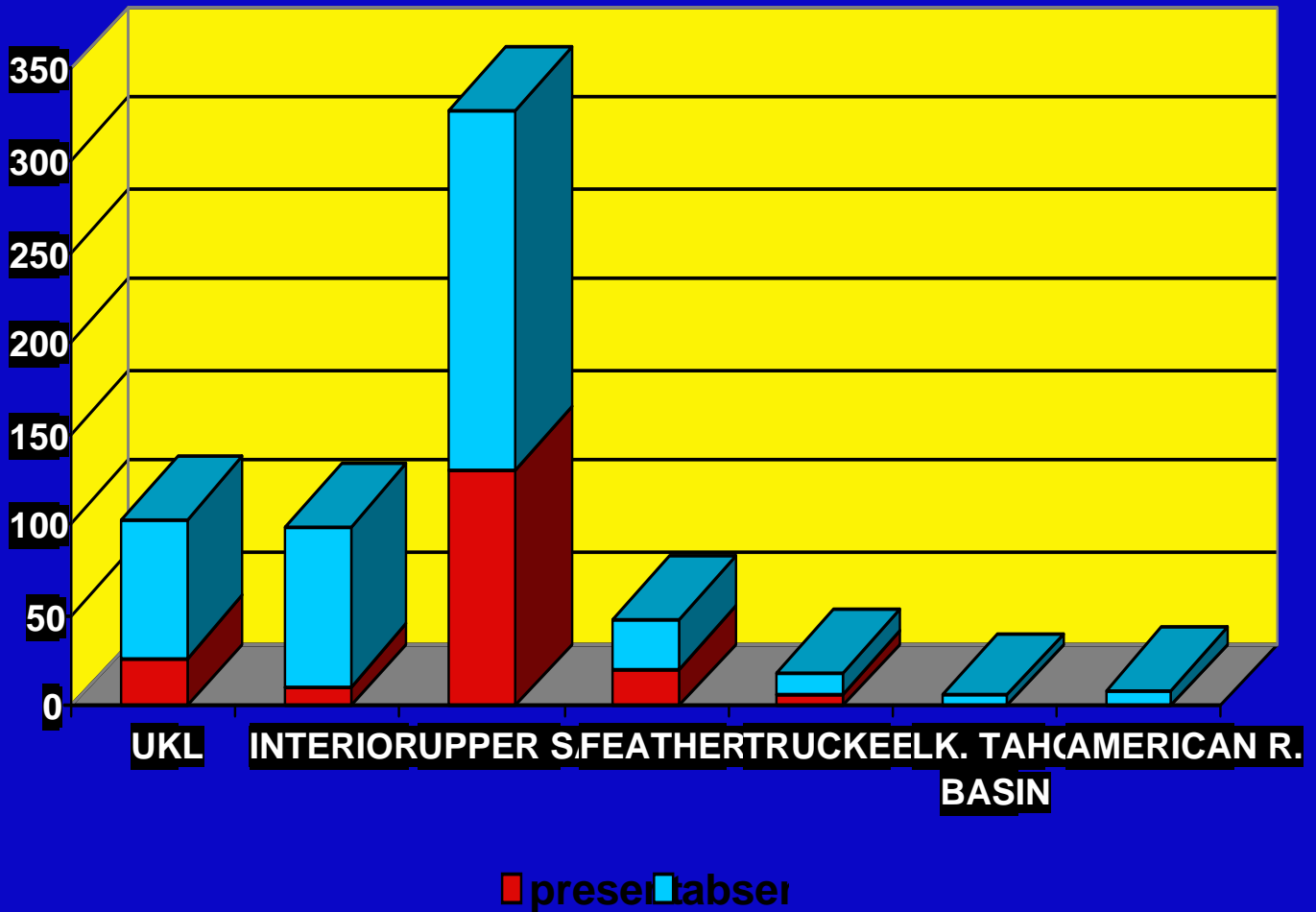


N=117
2006 Sites

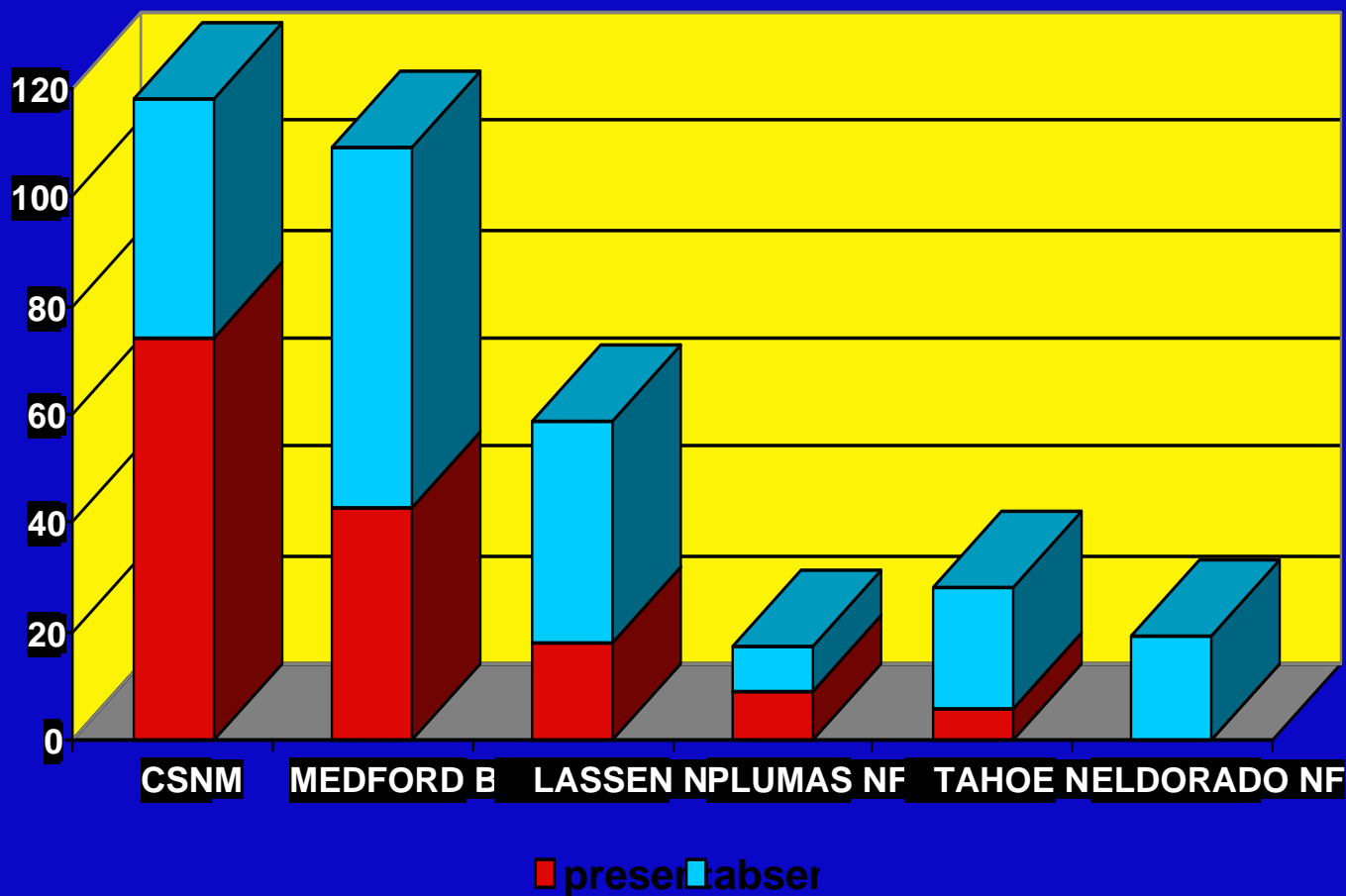


TN/MN
15.5°





RATE OF SUCCESS COMPARISONS BETWEEN SOME DRAINAGES, USING COLD SPRING SITES AND OCCURRENCE/ABSENCE OF THE RISSOID *FLUMINICOLA* AS AN EXAMPLE.



**RATE OF SUCCESS COMPARISONS BETWEEN SOME
FEDERAL UNITS, USING COLD SPRING SITES AND
OCCURRENCE/ABSENCE OF THE RISSOID
FLUMINICOLA AS AN EXAMPLE.**

Acknowledgements

Joseph Furnish, NFS, Southwest Region

Cantara Trustee Council, Redding

Richard Lis, California Fish & Game, Redding