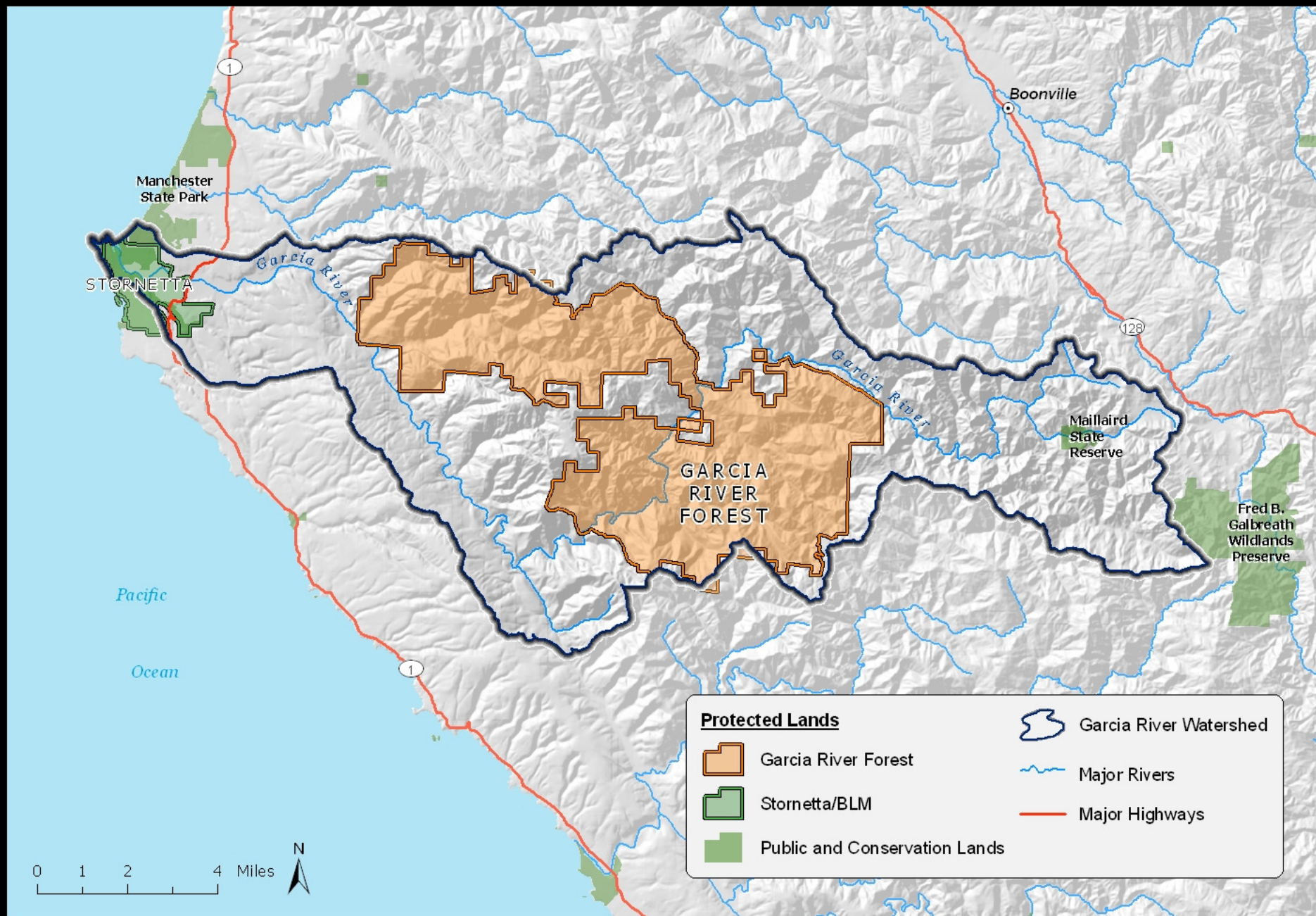


**"Taking the temperature" of a North Coast
watershed:
measuring stream health at the Garcia River Forest**



Jennifer Carah
The Nature Conservancy

Garcia River Forest Conservation Context





Garcia River Forest

- Practice uneven-aged forestry
- Harvest levels significantly less than growth rates
- Develop old growth forest habitat elements



Garcia River Forest



Garcia River Forest

- Hypothesis: We can produce long-term and sustained-yield production of valuable forest products in a healthy, vigorous and diverse forest while protecting and enhancing the associated biodiversity values of watershed, wildlife, and fish.



Conservation Targets





Viability Analysis

Key Ecological Attributes:

Factors that *characterize* the target, *limit* its distribution, or determine its *variation* over space and time

- e.g. Water quality

Indicators:

Measurable entities used to *assess the status and trends* of a conservation target's Key Ecological Attribute(s)

- e.g. Water temperature

From Conservation by Design (TNC 2006)



Viability Analysis

KEY ECOLOGICAL ATTRIBUTES

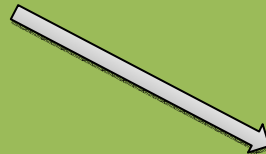
Migration Passage



Water Quality



Habitat Features



INDICATORS

Migration barriers

Water temperature

Pool shelter

Thalweg variability

Pool frequency

Embeddedness

Riparian cover

d50

LWD

Protocols

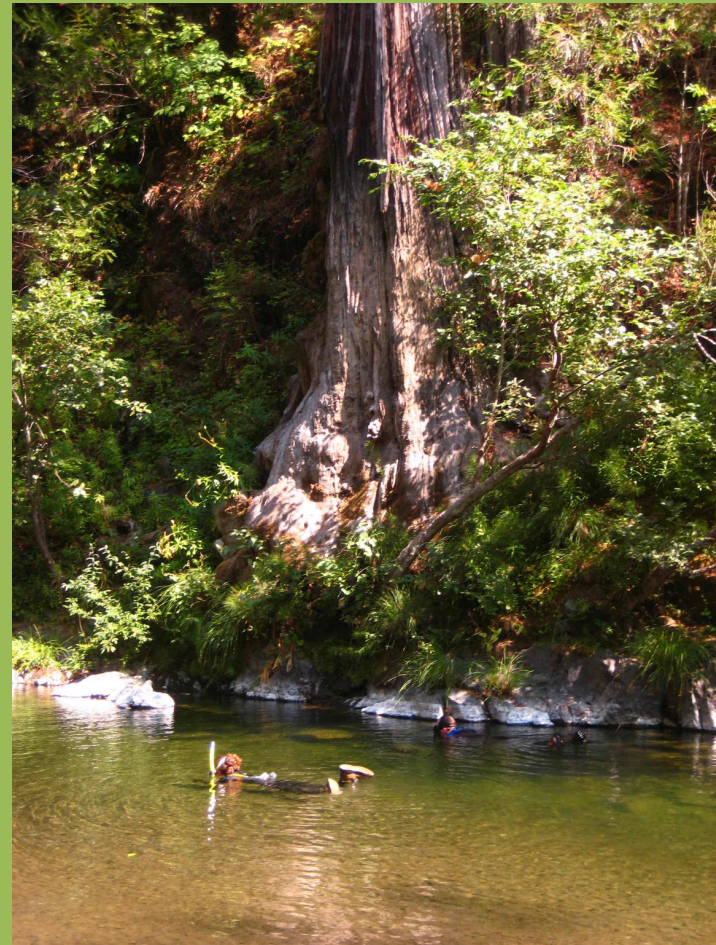
- US EPA EMAP
- Attributes measured:
 - Channel Dimensions
 - Channel Gradient
 - Anthropogenic Alterations
 - Substrate Size
 - Habitat Complexity, Cover, LWD
 - Riparian Vegetation Cover and Structure
 - Stream Discharge
 - Benthic Macroinvertebrates
 - Fish
 - Invasives



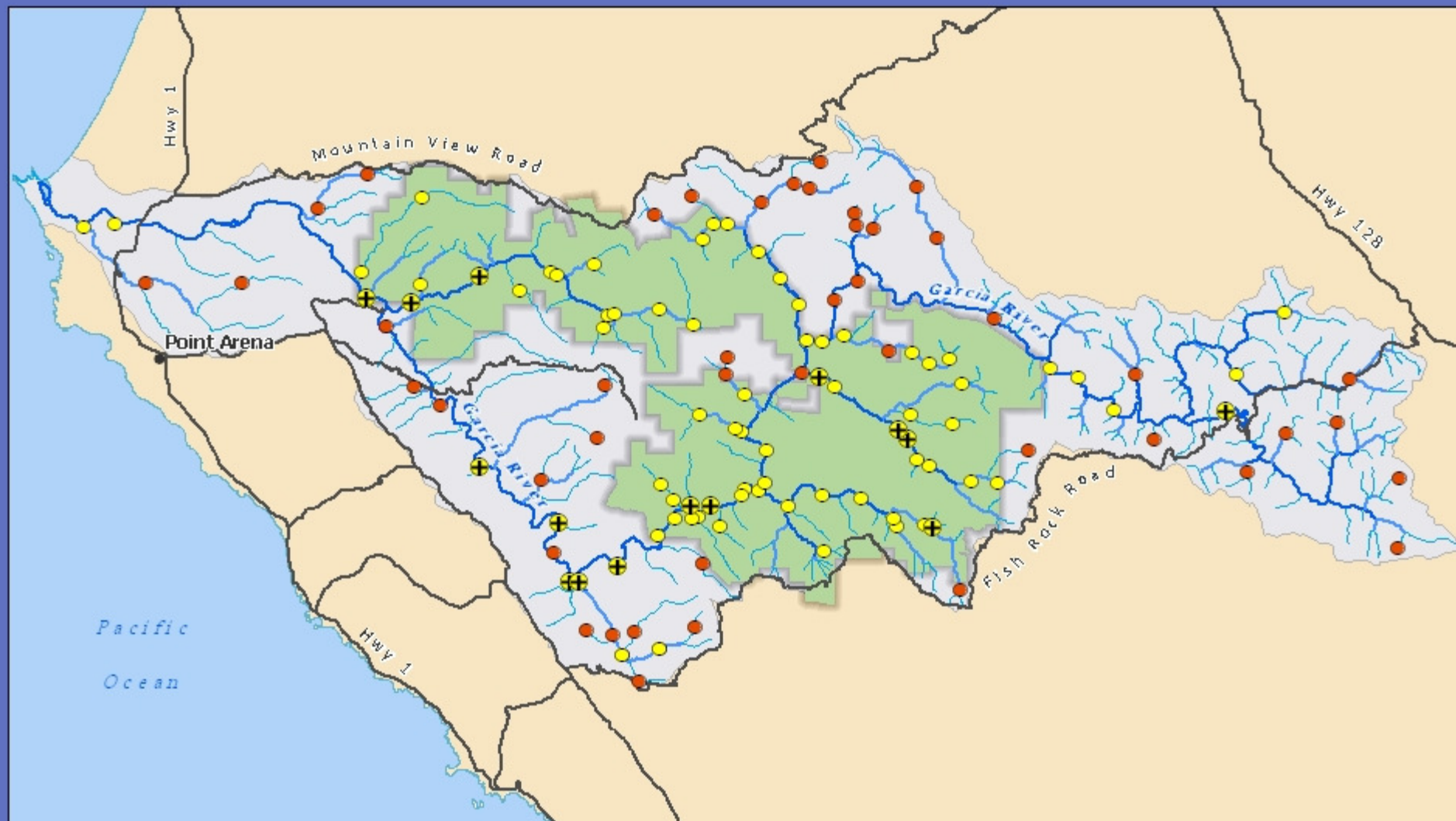
TMDL/EMAP Interface

Garcia TMDL Parameters:

1. Migration barriers
2. **Embeddedness**
3. % fines < 0.85mm*
4. % fines < 6.5mm*
5. **Primary pool frequency**
6. V^* in 3rd order streams
7. **Median particle size (d50)**
8. **Large woody debris volume**
9. **Channel width-to-depth ratio**
10. **Variability in thalweg profile (habitat heterogeneity)**
11. **Riparian canopy closure**



Garcia River EMAP X-Sites



- | | |
|-------------------------|--------------------------|
| ● Panel 1 | — Public Roads |
| ● Panel 1 Unsampled | ■ Garcia River Forest |
| ⊕ Panel 1 Coho Positive | ■ Garcia River Watershed |

0 1 2 4 Miles



Conservation Target		Category	Key Attribute	Indicator	Poor	Fair	Good	Very Good	Current Indicator Status	Current Rating	Desired Rating
1	Anadromous Fish Bearing Stream	Condition	Habitat features	Primary pool Frequency in Inman	0-20%	20-39%	>40% of length of total habitat		39%	Fair	Good
1	Anadromous Fish Bearing Stream	Condition	Habitat features	Primary pool Frequency in Signal	0-20%	20-39%	>40% of length of total habitat		31%	Fair	Good
1	Anadromous Fish Bearing Stream	Condition	Habitat features	Riparian canopy cover Inman	<89%	89-98%	>99%		81%	Poor	Good
1	Anadromous Fish Bearing Stream	Condition	Habitat features	Riparian canopy cover Signal	<89%	89-98%	>99%		91%	Fair	Good
1	Anadromous Fish Bearing Stream	Condition	Habitat features	Large woody debris (instream) Inman	<200 cu.m./k m.	200-372 cu.m./km.	>372 cu.m./km.		191	Poor	Good
1	Anadromous Fish Bearing Stream	Condition	Habitat features	Large woody debris (instream) Signal	<200 cu.m./k m.	200-372 cu.m./km.	>372 cu.m./km.		655	Good	Good

Macroinvertebrates

North Coast IBI

Scoring:

- 81-100 - very good condition
- 61-80 - good condition
- 41-60 - fair condition
- 21-40 - poor condition
- 0-21 - very poor condition
- ≥ 52 = impaired waters



North Coast IBI values - Garcia River

Very good condition: 28.3% of sites

Good condition : 34.8% of sites

Fair condition: 34.8% of sites

Poor condition: 2.2% of sites
(actually just one site)

Very poor condition: 0 sites

Impaired Waters:

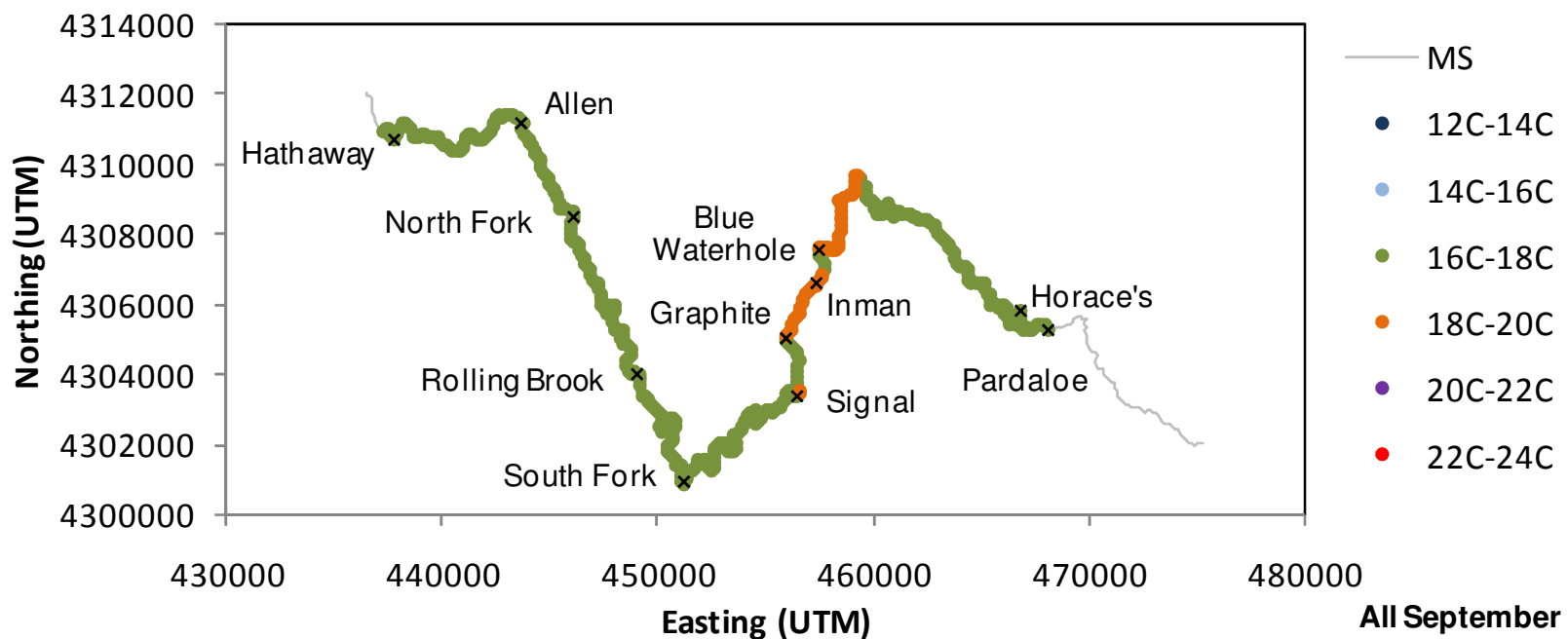
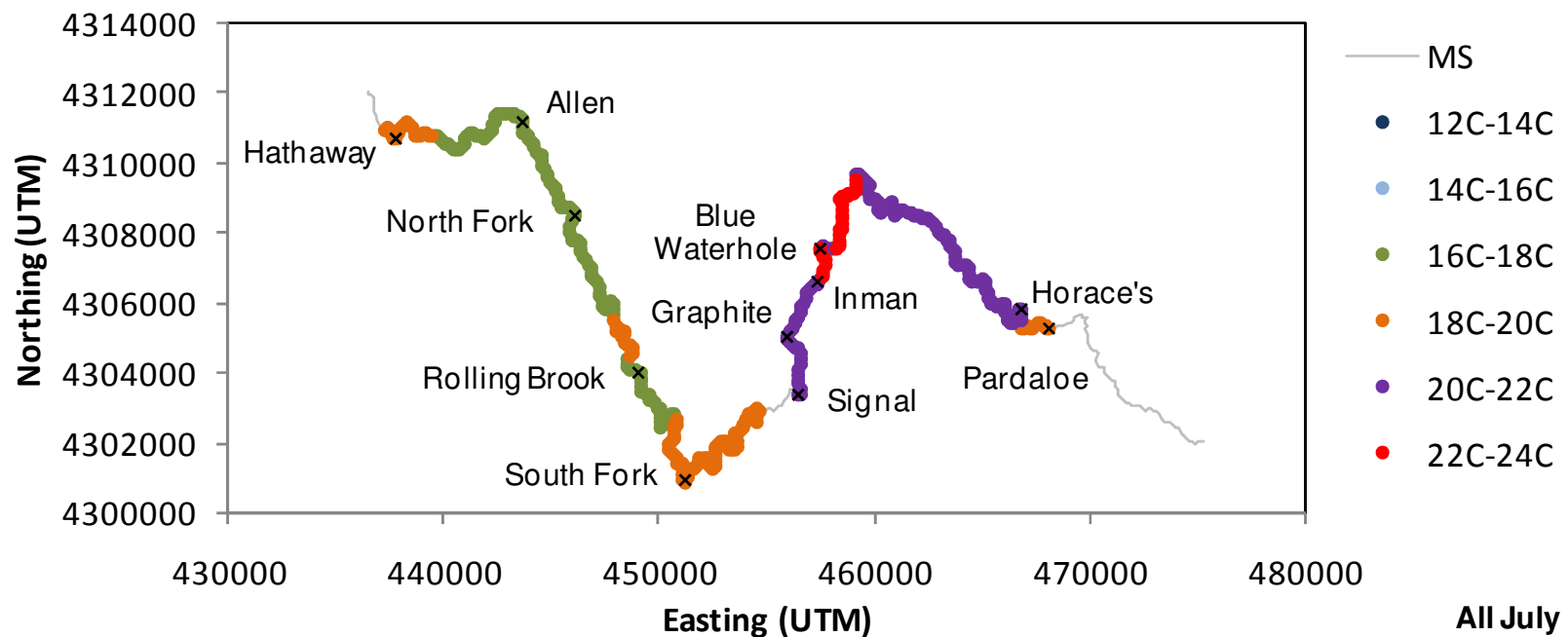
- 19.6% of all sites
- 41.2% of Garcia River
mainstem sites

Macroinvertebrates

366 species of aquatic macroinvertebrates

- EPT taxa – 166
25.8% of the California EPT fauna
- Ephemeroptera (mayflies) -39
33.9% of CA fauna
- Plecoptera (stoneflies) - 45
24.5% of the CA fauna
- Trichoptera (caddisflies) - 82
23.8% of the CA fauna





• Acknowledgements:

- The Priscilla Bullitt Collins Trust
- The Conservation Fund: Scott Kelly, Holly Newberger, Evan Smith, Jenny Griffin, Madison Thomson, and Chris Kelly
- TNC: Jeanette Howard, Mark Reynolds, Ada Fowler, Chris Babcock, Larry Serpa, Lynn Lozier, Leslie Jordan, Tom Maloney, Lloyd Wagstaff, Andrea Miller, Katie Andrews, Megan Webb, Matt Merrifield, Kellie Bindel, Victoria Kvoriak, Sharon Wasserman, Louis Blumberg, Wendy Millet, George Yandell, Scott Morrison, Rebecca Shaw, Mike McManus, April Marcangeli, Sam Kannry, Rob Cimitile, Chad Anderson, Michelle McNulty, and Preston Malm
- US EPA: Phil Kaufmann, Dave Peck, Bob Hughes, Tony Olson
- Water Board: Jonathan Warmerdam, Rich Fadness, and staff
- CDFG: Shaun Thompson, Sean Gallagher, Jim Harrington
- Jon Lee, Austin Brady Richards, John Sandberg, Richard Bottorff
- Mendocino Redwood Company, Bureau of Land Management
- The Mailliard family, the Stornetta Family and Oz Farm