

# YUBA HEADWATER MEADOW RESTORATION

RACHEL A. HUTCHINSON  
SOUTH YUBA RIVER CITIZENS LEAGUE  
[RACHEL@SYRCL.ORG](mailto:RACHEL@SYRCL.ORG)



# YUBA RIVER WATERSHED

- Tributary of the Feather River
- 3500 square kilometers (1300 square miles)
- 3 forks: North, Middle, South
- Over 50 Impoundments (reservoirs)
- 315 meadows



# HEADWATER STREAMS

## North Yuba

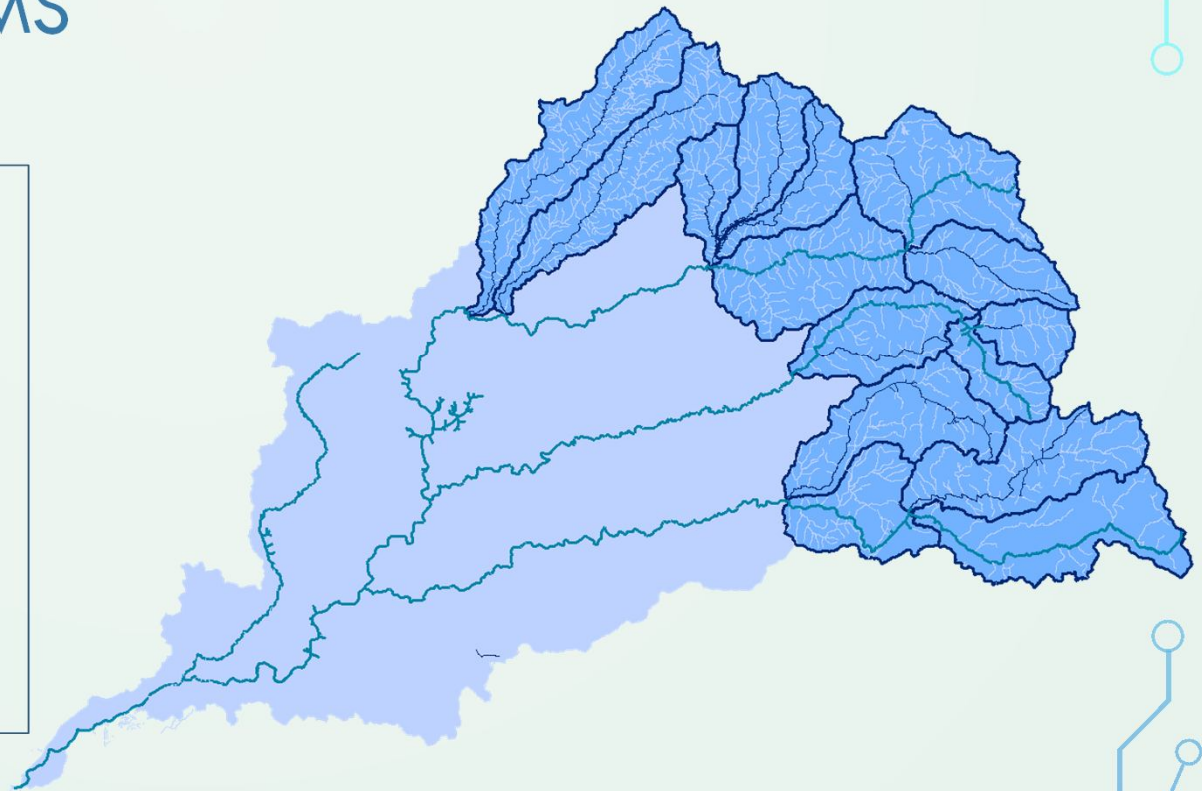
Slate  
Canyon  
Downie  
Lavezzola  
Pauley  
Salmon  
Haypress

## Middle Yuba

Pass Creek  
  
East Fork  
Creek

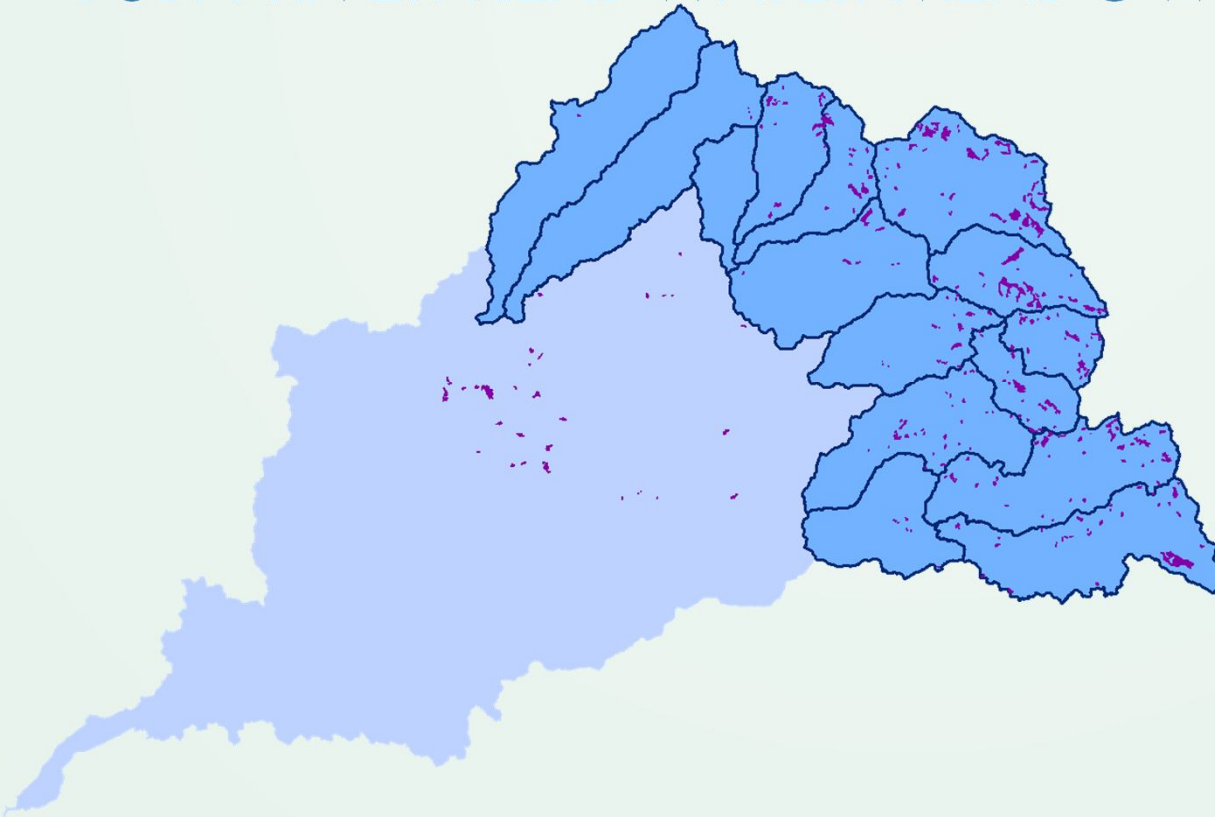
## South Yuba

Fordyce  
Creek  
  
Canyon  
Creek



# YUBA RIVER HEADWATER MEADOWS

- 273 meadows covering 5500 acres within the headwater reaches
- SYRCL focuses on restoring Sub-watersheds





# YUBA RIVER HEADWATER MEADOWS

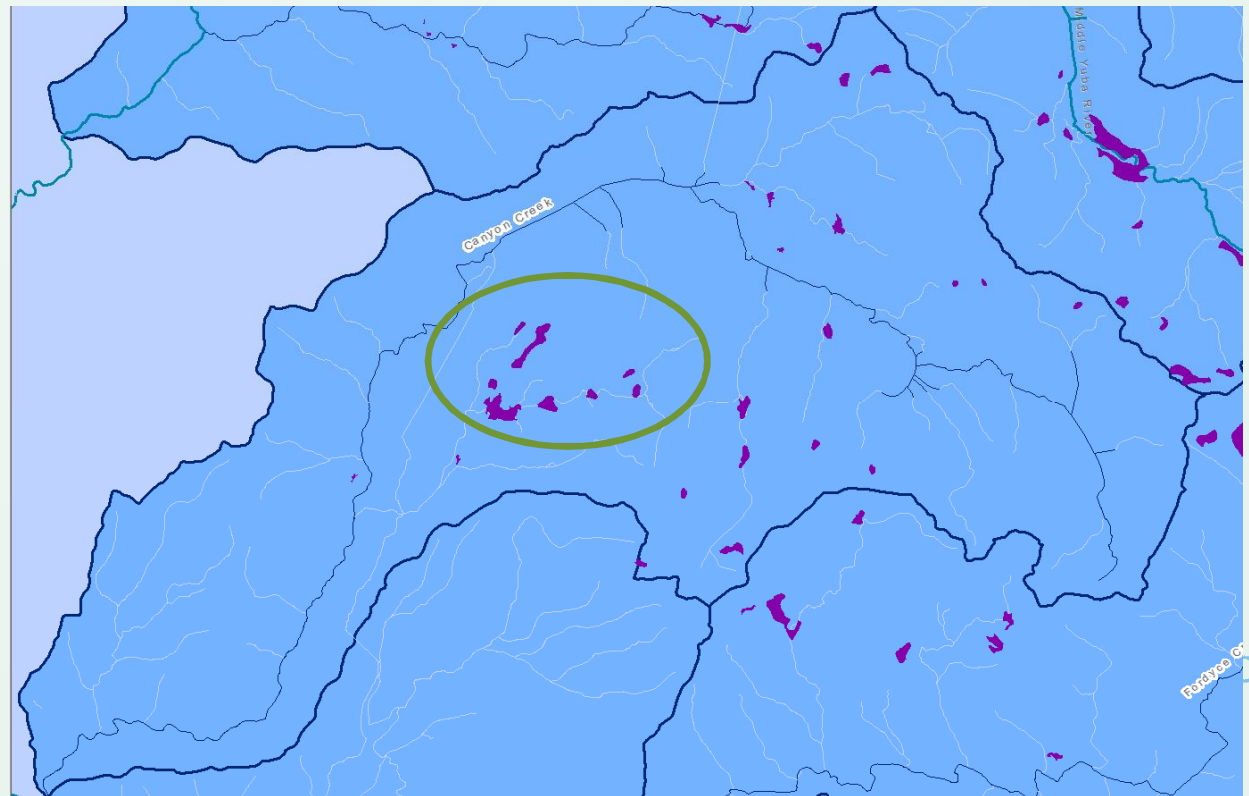
## Benefits of Sub-watershed Approach

- Create semi-continuous climatic refugia
- Improve water quality and quantity on a sub-watershed scale
- Focused approach to watershed scale Restoration objectives



# CANYON CREEK

- Texas Creek Focus
- Loney and Deer Meadow



# LONEY MEADOW RESTORATION DESIGN

## Low Impact:

- Fill of roads, trails
- Remove ditched stream sections
- Fix culverts
- Fill degraded banks with borrow



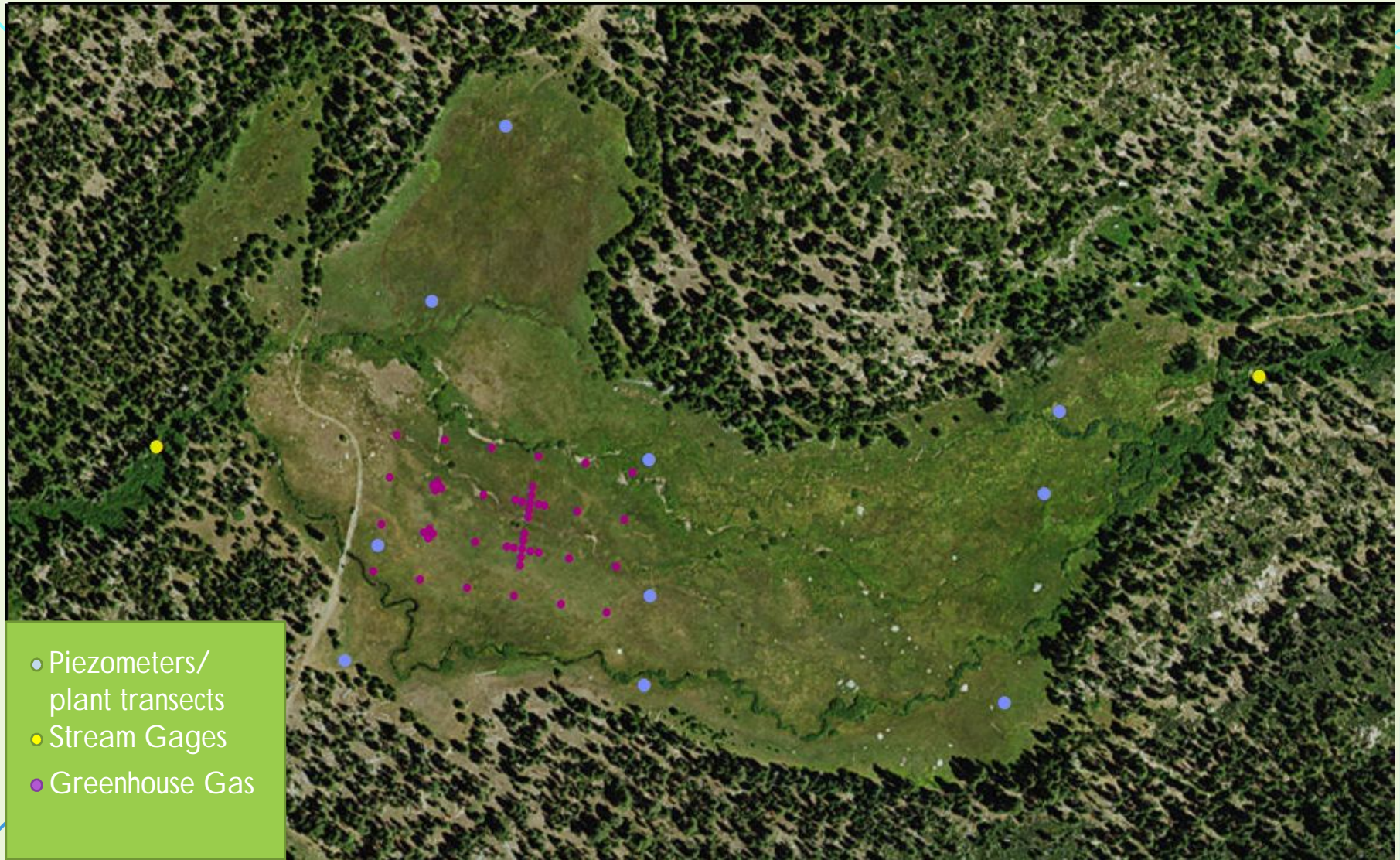


# LONEY MEADOW MONITORING

- Plants
- Amphibians
- Surface and Groundwater Hydrology
- Green house gases
- Biomass
- Channel Incision

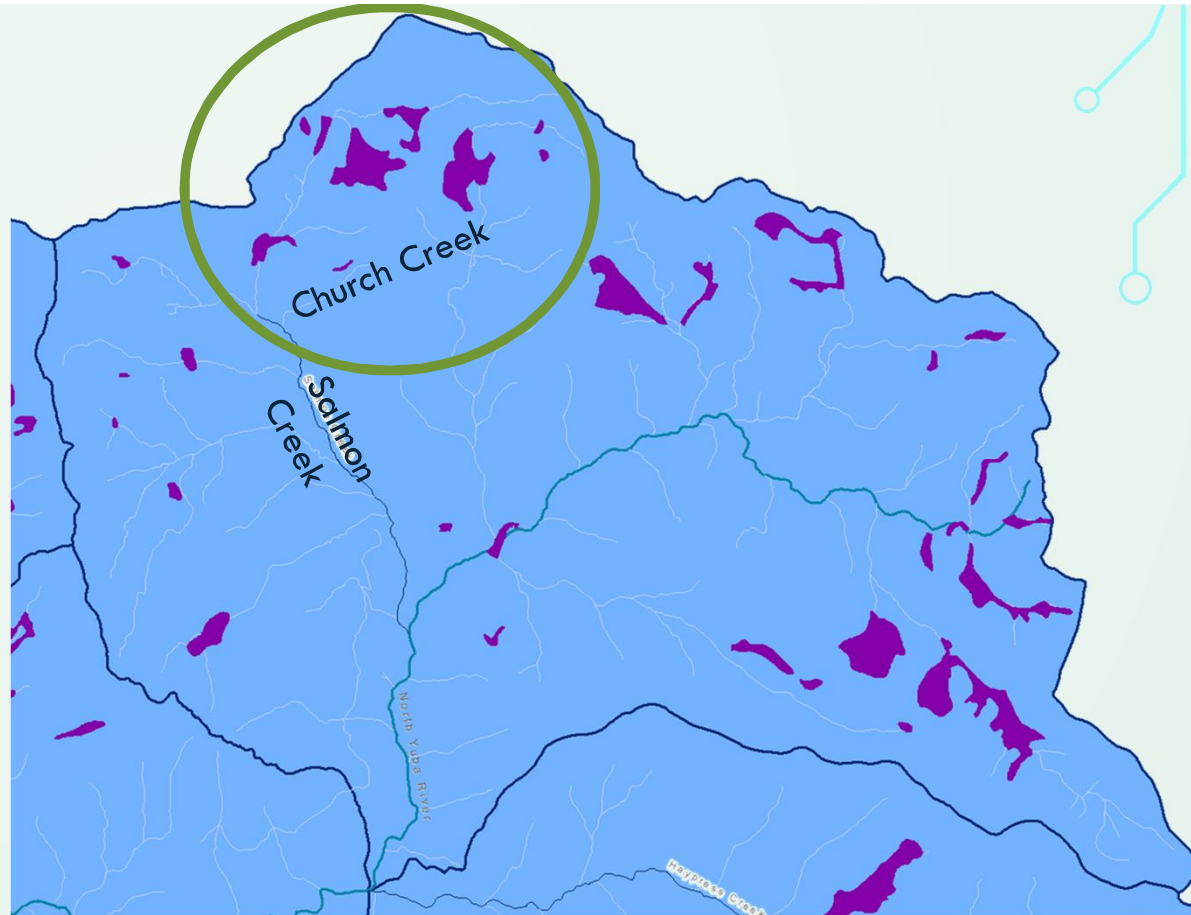






# SALMON CREEK

- Church Creek Meadows
- Funded to Restore Bear Trap Meadow
- Working on assessment of Church Meadows





# QUESTIONS?



With thanks to The Tahoe National Forest, UC Davis, National Fish and Wildlife Foundation, National Forest Foundation, CA Dept. of Fish and Wildlife, Sierra Nevada Conservancy, Earthwatch, Stillwater Sciences, Department of Water Resources, Truckee Donner Land Trust, SYRCL Volunteers and many others for partnering and supporting SYRCL's meadow restoration work!



