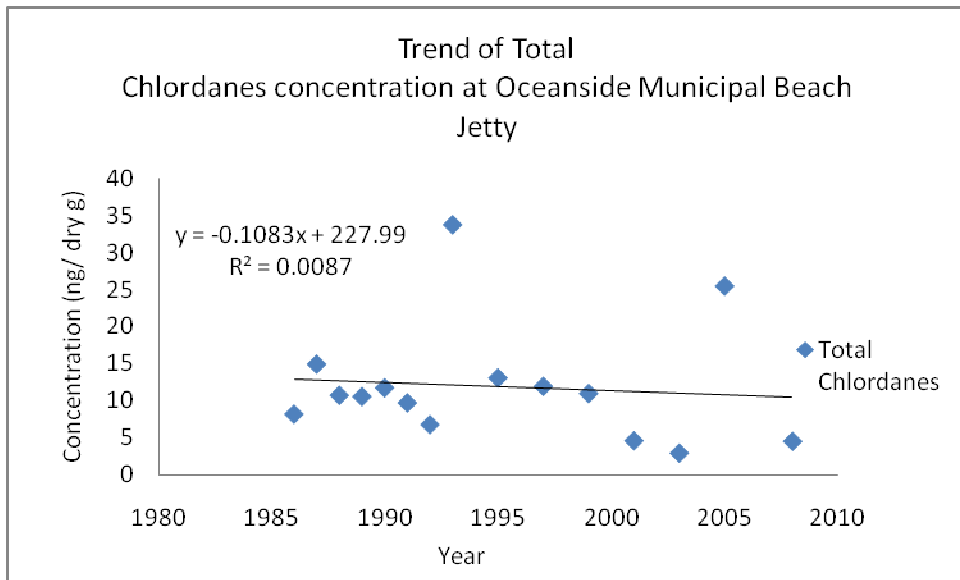
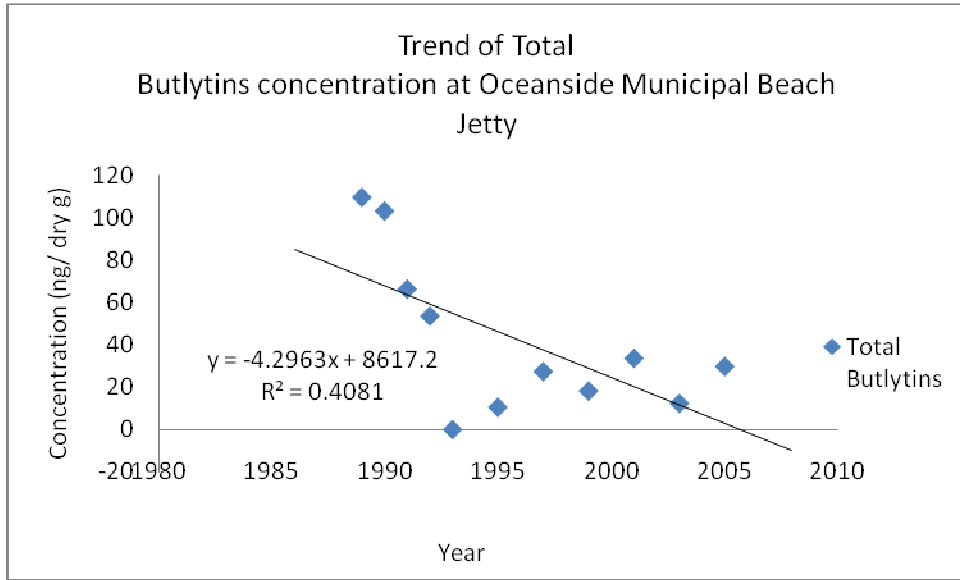
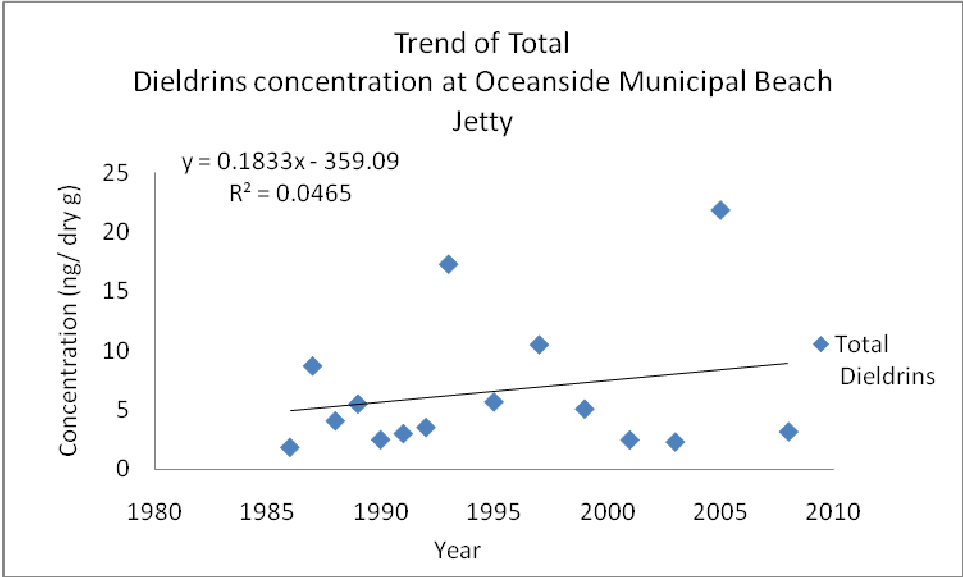
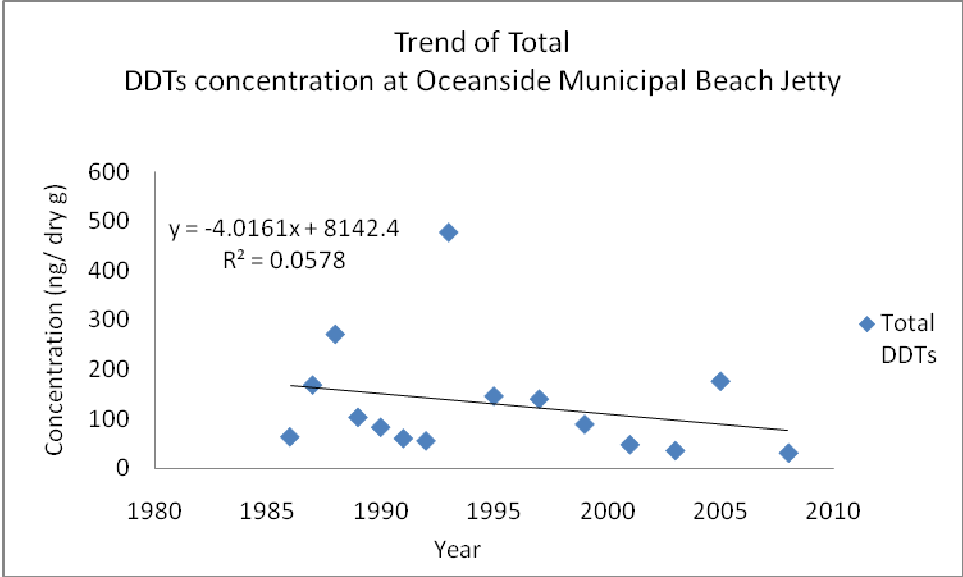


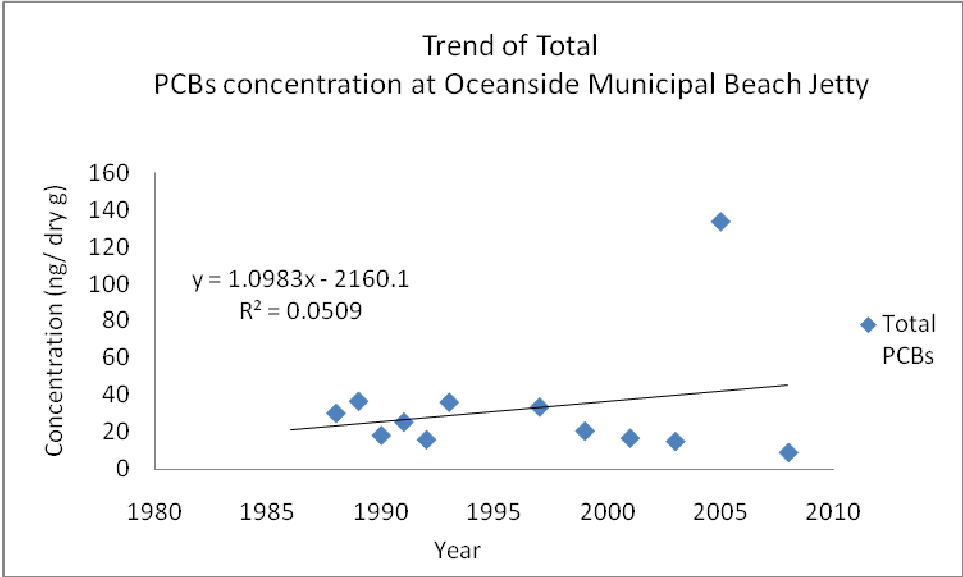
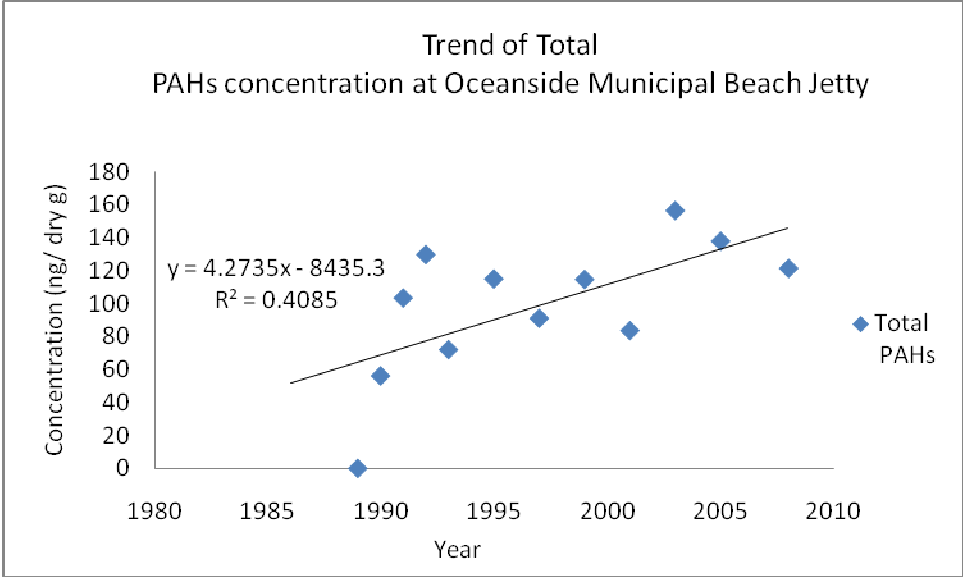
## Summary for Oceanside Municipal Beach Jetty (OSBJ)

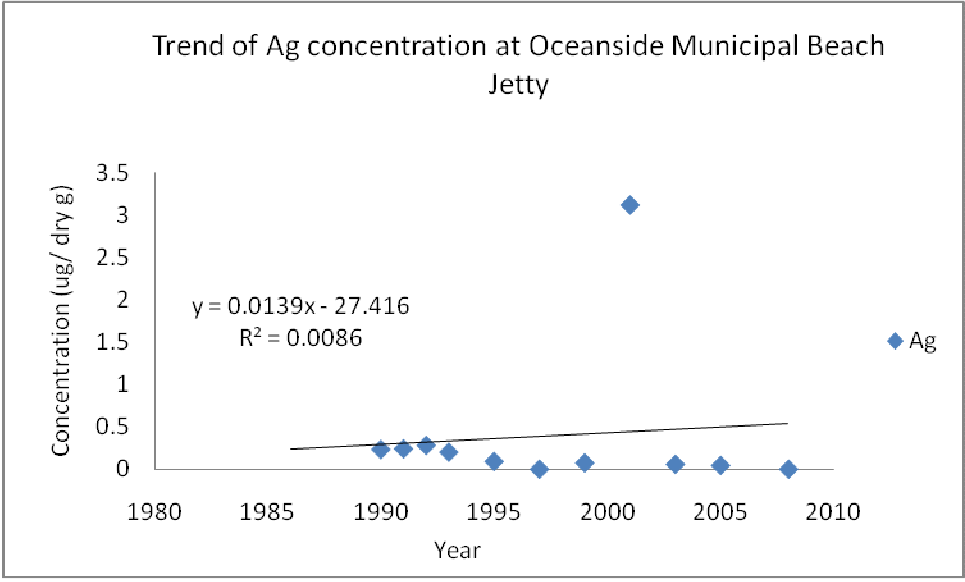
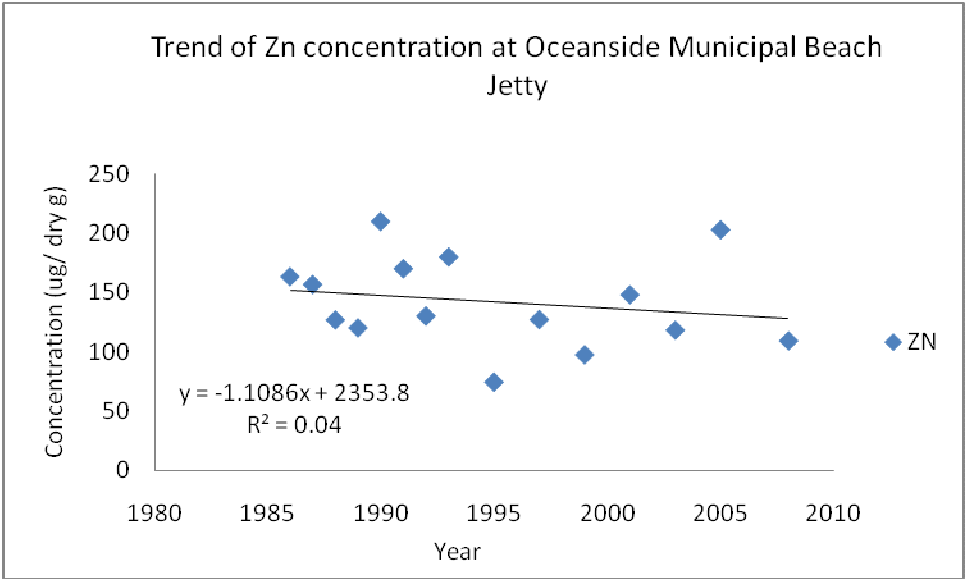
The following graphs show trends at Oceanside Municipal Beach Jetty from years 1986-2009 for the following constituents: Butyltin, Chlordane, Total DDT, Dieldrin, Total PAH, PCBs, Zinc (Zn), Silver (Ag), Aluminum (Al), Arsenic (As), Cadmium (Cd), Chromium (Cr), Copper (Cu), Iron (Fe), Manganese (Mn), Nickel (Ni), Lead (Pb), Selenium (Se), Antimony (Sb), Silicon (Si) and Tin (Sn).

Oceanside Municipal Beach Jetty (OSBJ)

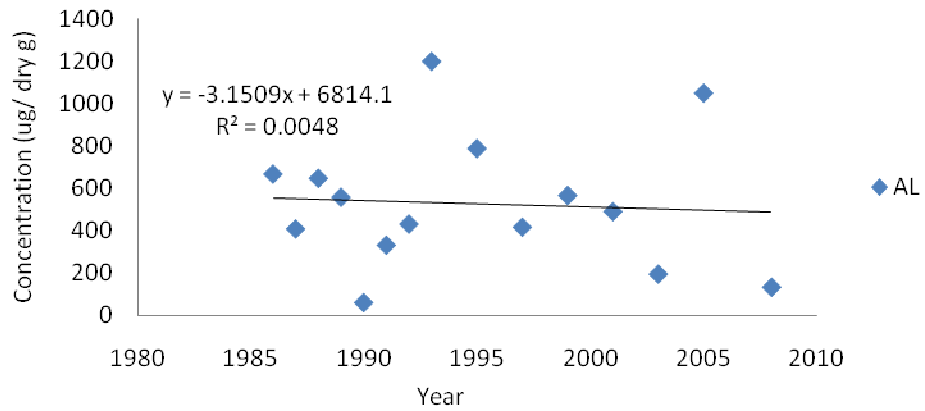




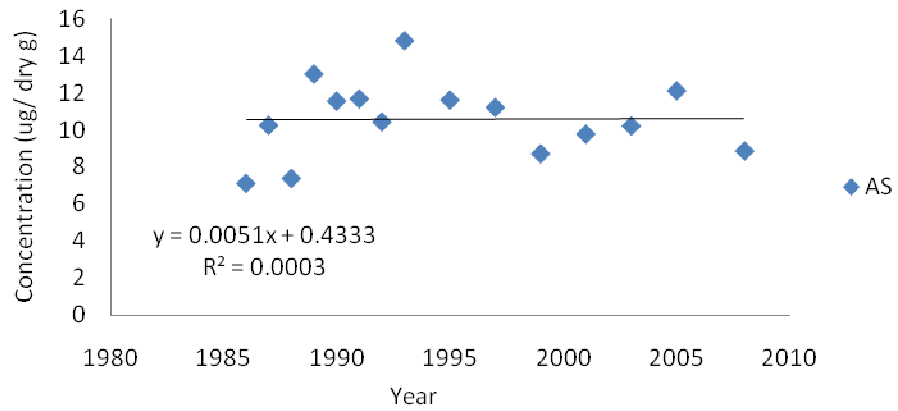


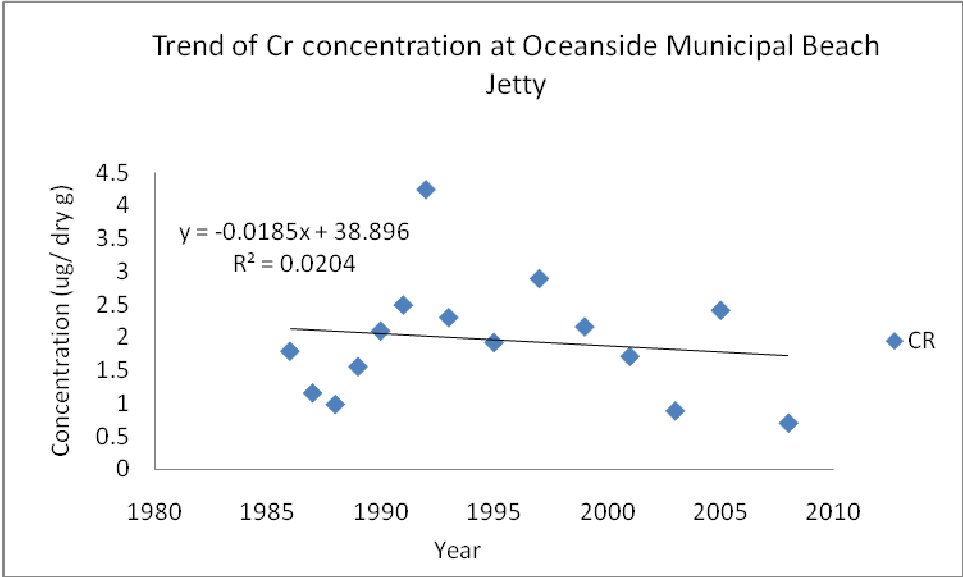
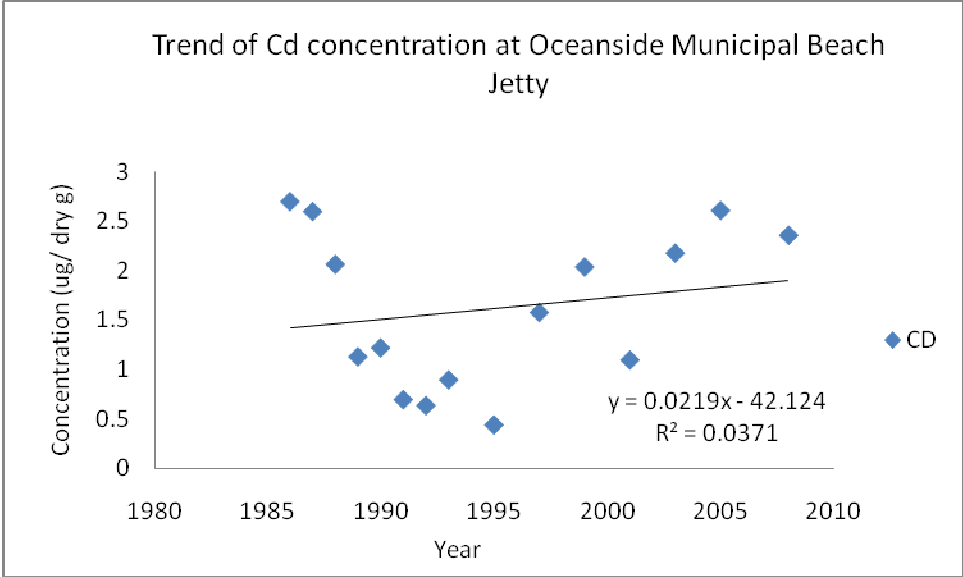


Trend of Al concentration at Oceanside Municipal Beach Jetty

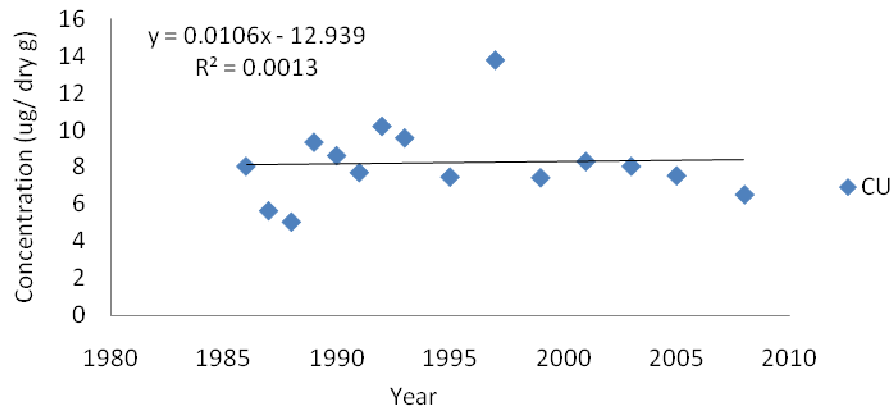


Trend of As concentration at Oceanside Municipal Beach Jetty

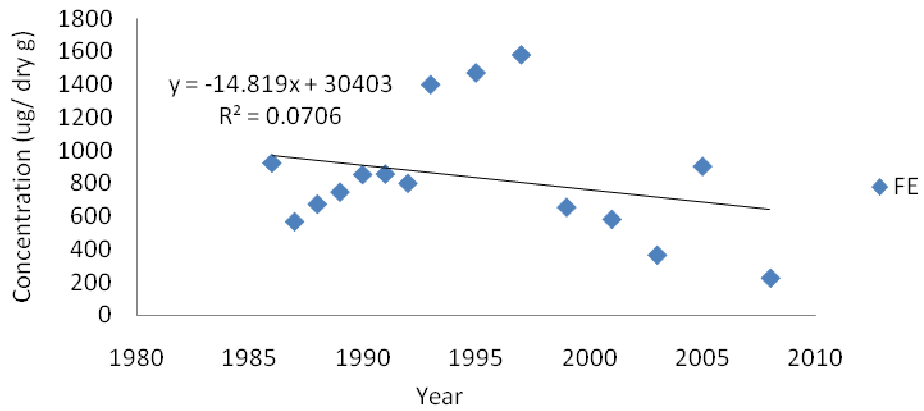




Trend of Cu concentration at Oceanside Municipal Beach Jetty

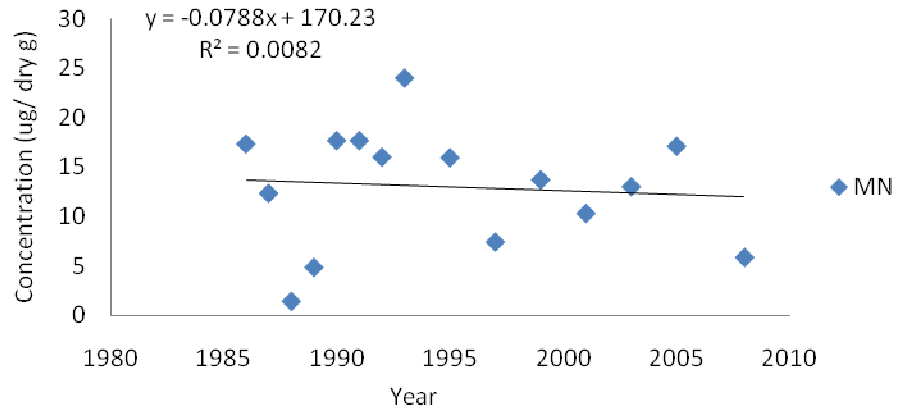


Trend of Fe concentration at Oceanside Municipal Beach Jetty

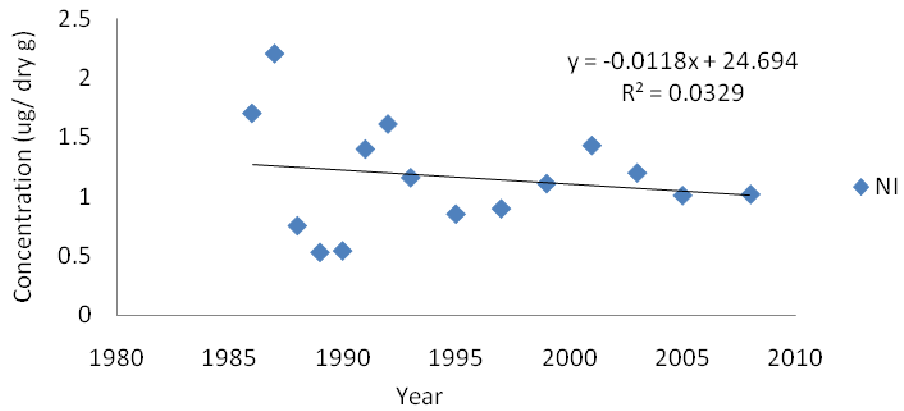


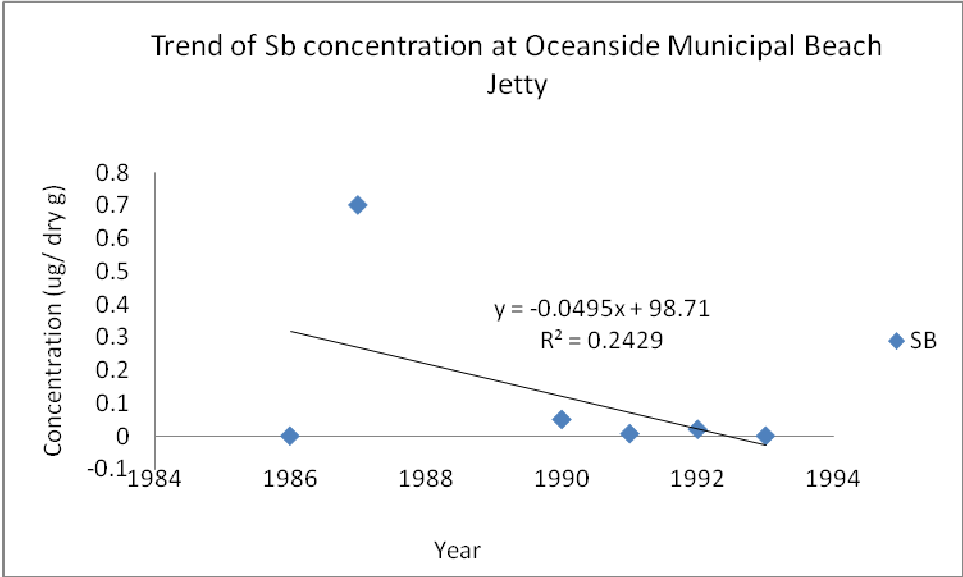
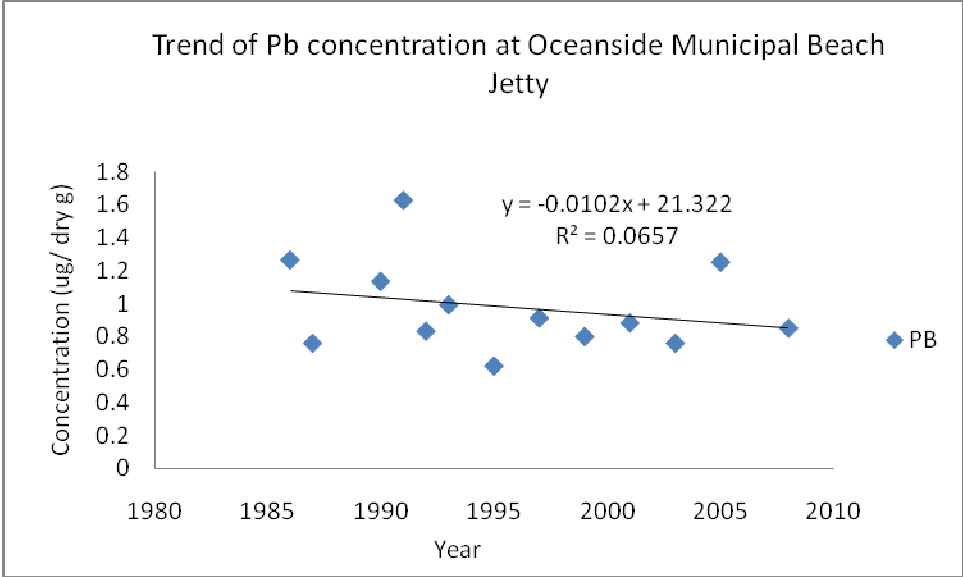


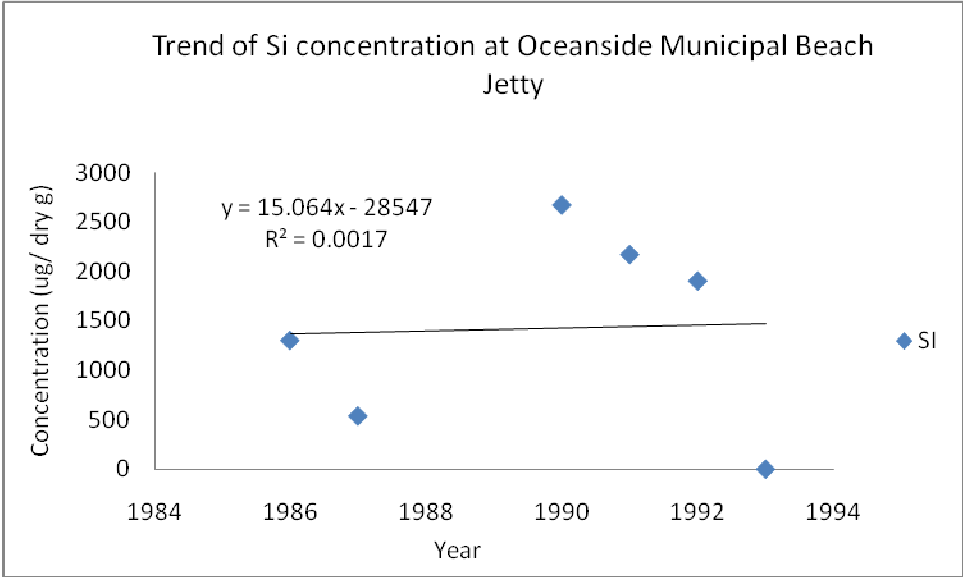
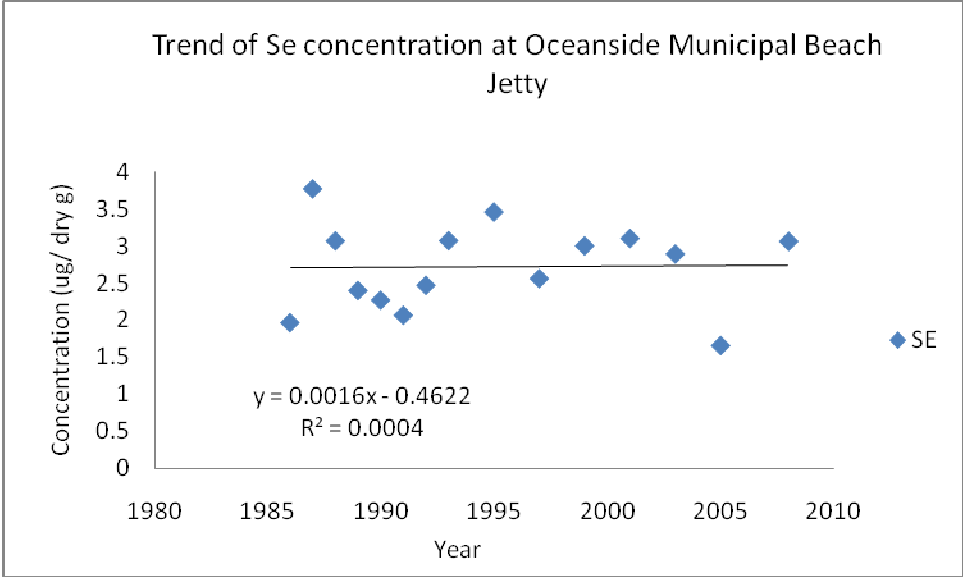
Trend of Mn concentration at Oceanside Municipal Beach Jetty



Trend of Ni concentration at Oceanside Municipal Beach Jetty







Trend of Sn concentration at Oceanside Municipal Beach Jetty

