

1995

Changes in Channel-Stored Sediment, Redwood Creek, Northwestern California, 1947 to 1980

By MARY ANN MADEJ

GEOMORPHIC PROCESSES AND AQUATIC HABITAT
IN THE REDWOOD CREEK BASIN, NORTHWESTERN
CALIFORNIA

U.S. GEOLOGICAL SURVEY OPEN-FILE REPORT 92-34



Humco-GB

1399.8

C 2

M 44

1992

1992

U.S. DEPARTMENT OF THE INTERIOR

MANUEL LUJAN, Jr., *Secretary*

U.S. GEOLOGICAL SURVEY

Dallas L. Peck, *Director*

Any use of trade, product, or firm names in this publication is for
descriptive purposes only and does not imply endorsement by the
U.S. Government

Library of Congress Cataloging in Publication Data

For sale by Book and Open-File Report Sales, U.S. Geological Survey,
Federal Center, Box 25425, Denver, CO 80225

CONTENTS

	Page		Page
Abstract.....	1	Temporal changes in sediment storage	12
Introduction.....	1	Effects on bedload transport.....	15
Acknowledgments.....	2	Depths of scour and fill.....	17
Previous studies	2	Breakdown of bed material.....	19
Study area.....	2	Distribution and quantity of channel-stored sediment.....	22
Methodology.....	6	Controls on sediment distribution	25
Aerial photographic and field measurements	6	Residence times of stored sediment	32
Scour and fill measurements	9	Implications for channel recovery from major storms	38
Relative age estimates for sediment.....	9	Conclusion	38
Relation between sediment mobility and size.....	12	References cited	38

ILLUSTRATIONS

	Page
FIGURE 1. Map of Redwood Creek showing locations of study reaches, gaging stations and scour-chain sites	3
2-4. Photographs showing:	
2. Flat-topped gravel flood berm deposited in upper reach of Redwood Creek during December 1964 flood	5
3. Coarse lobate bar located at kilometer 30 in Redwood Creek	7
4. Example of burial and killing of trees by aggradation attributed to flood of 1964	8
5. Schematic cross section of four types of sediment reservoirs in Redwood Creek and schematic plan view of four sediment reservoirs in Redwood Creek	10
6. Vertical aerial photograph showing classification of sediment reservoirs in Redwood Creek at kilometer 100 near Orick	11
7. Plot showing cumulative volumes and spatial distribution of stored sediment in Redwood Creek as of 1947, 1964 and 1980	13
8. Plot showing volumes of stored sediment in individual study reaches as of 1947, 1964 and 1980.....	14
9. Cross-sectional profiles of Redwood Creek for 1981 and 1982.....	16
10. Cross-sectional profiles of Redwood Creek at stream gaging stations showing changes in bed elevation during flood of January 13-14, 1980.....	18
11. Plot of maximum depths of scour against dimensionless discharge index, $Q/Q_{1,2}$, for three gaging stations in Redwood Creek.....	20
12. Cumulative particle-size distribution curves for samples used in attrition experiment	21
13. Histogram showing distribution of stored sediment in various features in Redwood Creek as of 1980.....	23
14. Longitudinal profile of Redwood Creek showing distribution of localized features along certain reaches of the creek.....	24
15. Plot of distribution of sediment of different relative activities (sediment reservoirs) against drainage area	26
16. Logarithmic plot of volume of stored sediment per unit distance (V_s) against drainage area.....	28
17. Plot showing cumulative volumes of total landslide input to the main stem of Redwood Creek and the deposition in Redwood Creek resulting from the December 1964 flood	29
18-23. Logarithmic plots showing:	
18. Changes in stored sediment in Redwood Creek, due to the 1964 flood, against input due to the same flood.....	30
19. Volume of stored sediment per unit distance against channel gradient	31
20. Volume of stored sediment per unit distance against the boundary shear stress calculated for Redwood Creek at bankfull discharge.....	33
21. Volume of stored sediment per unit distance against valley width in a study reach	34
22. Volume of active, semiactive, and inactive sediment per unit distance against volume of stable stored sediment per unit distance for study reaches in Redwood Creek	35
23. Annual bedload discharge against drainage area computed for six gaging stations in Redwood Creek	37

CONTENTS

TABLES

	Page
TABLE 1. Net changes in stored sediment in Redwood Creek, 1947-64, 1965-80, and total stored sediment in 1980 above the 1947 datum	15
2. Depths of scour and fill in channel bed at scour-chain sites	17
3. Scour depths estimated from USGS current meter discharge measurements.....	19
4. Data for the 39 study reaches on Redwood Creek	27
5. Comparison of landslide input and changes in channel-stored sediment due to the 1964 flood in the upper, middle, and lower reaches of Redwood Creek	27
6. Definition of relations between volumes of sediment and drainage area, and between bedload discharge and drainage area, for the four types of sediment reservoirs in Redwood Creek	36
7. Residence times of sediment in storage reservoirs in the three main reaches of Redwood Creek.....	38

CHANGES IN CHANNEL-STORED SEDIMENT, REDWOOD CREEK,
NORTHWESTERN CALIFORNIA, 1947 TO 1980

By MARY ANN MADEJ¹

ABSTRACT

Stream channels form a link between hillslope erosion and sediment transport processes because they temporarily store sediment before it is transported out of the system. Storage of alluvium in the main stem of Redwood Creek was quantified for three time periods totaling 35 years. An unusual amount of aggradation during the December 1964 flood (a 50-year flood) increased the total volume of sediment stored on the valley floor by almost 1.5 times to 16×10^6 m³. Although moderate to high flood flows (2–20 year recurrence intervals) in subsequent years eroded sediment in the upper basin and redeposited it in downstream reaches, little change in the total amount of sediment stored on the valley floor occurred. The potential of stored sediment for transport was characterized as active, semiactive, inactive, or stable. Depths of scour in the gravel bed were computed from scour chain data and from successive discharge measurements made from selected cableways. In this gravel-bed stream, depth of scour increases downstream for equivalent discharges and also increases with increasing discharge at a given station.

Sediment is stored in several types of geomorphic features. Some of these features (such as recent flood-deposited gravel terraces, debris jams, stable alluvial terraces and strath terraces) are found only locally along Redwood Creek. Landslide activity exacerbated by the 1964 flood contributed 5.25×10^6 m³ of sediment to the mainstem of Redwood Creek, and channel storage increased by 4.74×10^6 m³. Maximum sediment deposition did not, however, occur at sites of the most intense landslide activity but rather occurred in areas of prior deposition. Valley width is the most important control on sediment distribution.

Erosion of bed sediment deposited by the 1964 flood contributed greatly to annual bedload transport in the upper reaches of Redwood Creek for several years after the flood. Current sediment yields for Redwood Creek are 2,700 Mg/km²/yr in the upper basin, where bedload is 20 percent of total load, and 2,200 Mg/km²/yr at the mouth, where bedload is 11 percent of total load. The particle sizes of Redwood Creek bed materials decrease rapidly during transport. A tumbling experiment indicated that schist clasts break down more quickly than sandstone clasts.

Residence times of active and semiactive sediment generally decrease downstream, but residence times increase in a downstream direction for stable sediment. Residence times range from decades for

sediment in the active channel bed to thousands of years for sediment in stable flood plain deposits. When stored sediment is mobilized, average velocities are highest for active sediment. The channel has recovered slowly from effects of the 1964 flood. Total channel recovery will take more than a century.

INTRODUCTION

Historically, geomorphologists have studied both hillslope erosion processes and sediment transport in rivers, but few studies have quantified a linkage between these two processes—the storage component of channels. Channels may temporarily store sediment derived from hillslope erosion before transporting it out of the system. The quantity of sediment stored and its residence time varies with the type of fluvial system. Streams in steep mountainous terrain store little sediment for relatively short periods of time, whereas rivers in broad alluvial valleys store large quantities of sediment in their flood plains for thousands of years.

In the latter case, channel storage of alluvium can buffer the release of sediment from a drainage basin. Sediment eroded from hillslopes can reside in stream channels for long periods before eventually being transported out of the basin. In such situations, downstream sediment yields will not completely document upstream erosion rates. Some estimates of the volume of sediment stored in channels, knowledge of when that sediment was put into storage, and the rate at which sediment moves through the basin must be known.

Recent changes in the storage of alluvium along the channel of Redwood Creek in northern California presents a dramatic example of the capacity of a channel to buffer the release of sediment. Extensive land use changes in recent years, combined with several large storms, caused widespread erosion in Redwood Creek (Janda and others, 1975). Massive amounts of landslid-

¹ Redwood National Park, 1125 16th Street, Arcata, Calif. 95521

ing, gullying, and bank erosion occurred, causing widespread channel aggradation and dramatic increases in the volume of sediment stored along the channel of Redwood Creek. Deposition of coarse alluvial sediment in low-lying areas was sufficient to threaten aquatic and riparian resources of Redwood National Park.

This paper discusses recent changes in the storage of sediment in Redwood Creek. The volume of sediment stored on the valley floor under pre-1947 conditions, increases in volume of stored sediment due to a major flood in 1964, and the volume of sediment present in 1980 are quantified. In addition, factors that controlled deposition and factors responsible for transfer of those flood deposits downstream are described.

To accomplish the objectives listed above, the main stem of Redwood Creek has been treated as a continuous conduit of sediment composed of several storage features; debris jams and fans, midchannel bars, point bars, the channel bed, and flood-plain deposits. Sediment in these storage features was divided into four classes or sediment reservoirs—active, semiactive, inactive, and stable—according to its potential mobility. All stored sediment has been considered to be in transit downstream, but the rate at which it moves varies with its size and location on the valley floor. A continuity equation was applied to several reaches of the stream to document sediment input (I), the change in storage (ΔV_s), and the output (O) from each reach. These factors must balance, as shown in the continuity equation:

$$I + \Delta V_s = O \quad (1)$$

These data were then used to compute residence times and average particle velocities for the four sediment reservoirs and for different locations on the valley floor, according to the method laid out by Dietrich and Dunne (1978). This study addresses only storage in the main stem; channel storage in tributaries is discussed by Pitlick (chap. K, this volume).

ACKNOWLEDGMENTS

Many of the data in this study were collected with the able field assistance of P. Routon, R. Belding, N. Var-num, V. Ozaki, J. Florsheim, T. Walter, T. Marquette, and B. Brower. Access to Redwood Creek on private land and historical information on Redwood Creek were kindly given by J. Massei, B. Frankie, T. Russ, T. Stover, K. Bareilles, Kerr Land and Timber Company, and Simpson Timber Company. The paper benefited greatly by reviews and comments of William Dietrich, Thomas Dunne, Fred Swanson, and Harvey Kelsey. Additional comments by Gordon Grant are appreciated. I

thank the clerical staff of the Arcata Office of Redwood National Park for their patience and assistance.

PREVIOUS STUDIES

The sediment budget concept as applied to forested drainage basins is relatively new, and only recently have studies from a wide variety of field areas been published. The use of sediment budgets has been explored by several investigators (Swanson, Janda, Dunne and Swanston, 1982). Dietrich and Dunne (1978) discussed the construction of sediment budgets with an example from a small undisturbed basin in western Oregon. Lehre (1981) described sediment sources and sediment yield in the Coast Ranges of California, and Kelsey (1977) formulated a sediment budget for the Van Duzen River in northern California. Reid (1981) and Madej (1982) extended sediment budget calculations to basins disturbed by recent logging and road construction. Swanson, Fredrickson and McCorison (1982) used a sediment budget to analyze the transport of inorganic and organic material in both old-growth and logged drainage basins.

Most sediment budget studies to date have been on small drainage basins (area less than 25 km²) in steep forested areas where little sediment is stored in channels or flood plains. Few studies have quantified the role of alluvial storage in sediment budgets. Dietrich and others (1982) described an approach for such quantification, which uses the age distribution of alluvial deposits to calculate residence times for sediment. Trimble (1981) addressed the question of sediment storage in a disturbed basin in Wisconsin where flood-plain storage is significant.

Several investigators addressed changes in channel storage through studies of changes in channel cross sections (Ritter, 1968; Hickey, 1969; chap. N, this volume). Stewart and La Marche (1967) calculated net scour and fill for several reaches that were modified by a large flood. From a study of cross-sectional changes in northern California streams, Lisle (1982) described the effects of changes (by aggradation and degradation) in stored sediment on riffle-pool morphology and the implications for bedload transport rates.

STUDY AREA

Redwood Creek drains a 725-km² basin in northern California (fig. 1). For much of its 108-km length it flows along the trace of the Grogan Fault, which juxtaposes two distinct bedrock types. The east side of the basin is generally underlain by unmetamorphosed sandstones and siltstones of Mesozoic Franciscan Assemblage, whereas the western side is predominantly underlain by

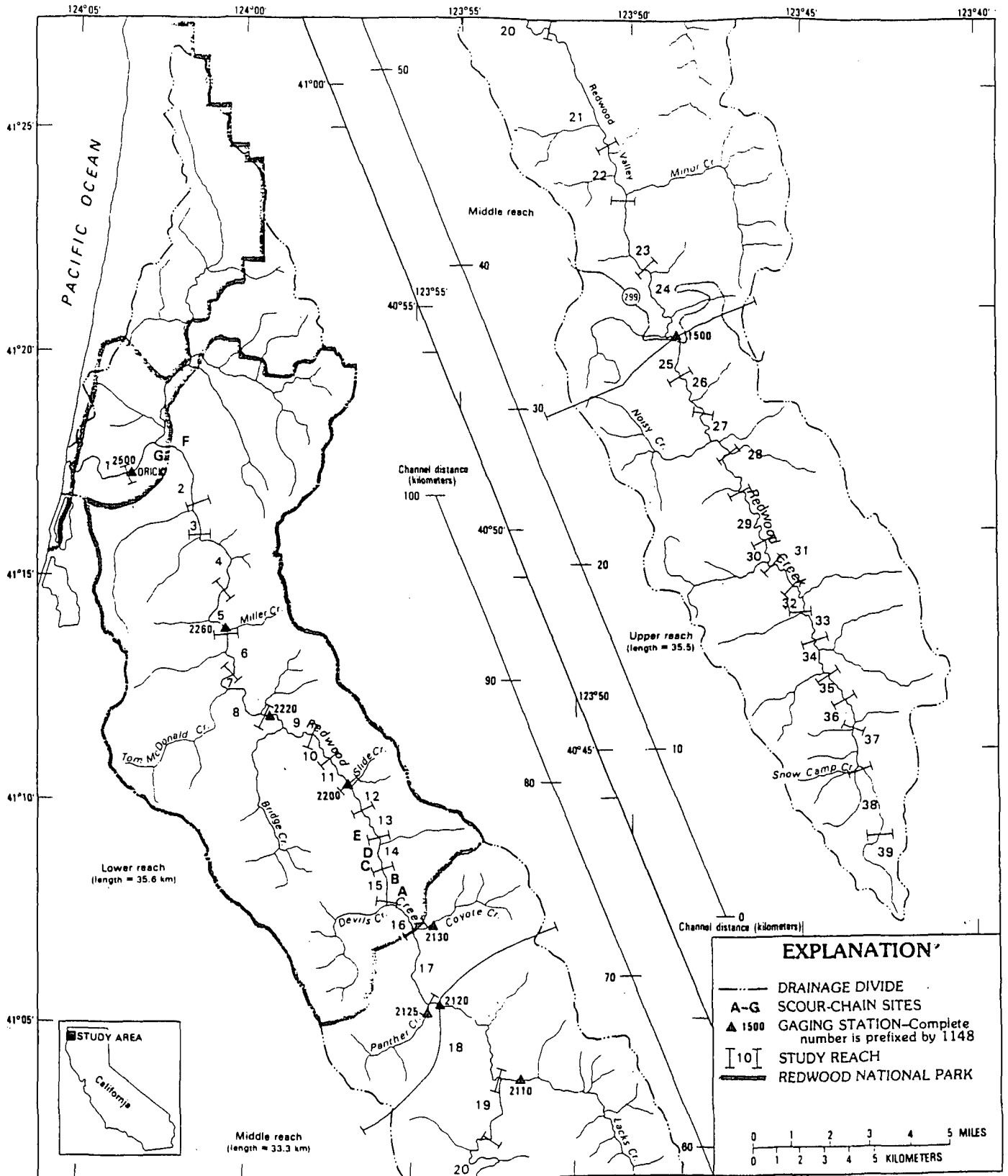


FIGURE 1.—Map of Redwood Creek showing locations of study reaches, gaging stations, and scour chain sites.

a quartz-mica schist. The basin receives an average of 2,000 mm of precipitation annually, most of which falls between October and March. Total basin relief is 1,615 m; average hillslope gradient is 26 percent.

Early aerial photographs taken in 1936 and 1947 show that the basin was covered with old-growth redwood and Douglas fir forests and a few areas of prairie. Redwood Creek was narrow and sinuous in most reaches, with a thick canopy of trees over much of its length. Wide alluviated reaches were apparent in Redwood Valley and near the mouth of Redwood Creek. Many of the alluvial deposits were vegetated with conifers and hardwoods. Very little logging or road construction had occurred by 1947.

Timber harvest began in earnest in the Redwood Creek basin in the early-1950's, and by 1966, 55 percent of the old-growth coniferous forest had been logged. By 1978 this figure rose to 81 percent (chap. C, this volume). Thousands of kilometers of logging roads were built during this time. Recent erosion rates measured by Janda (1978) are about 7.5 times greater than the natural rate estimated by Anderson (1976).

Large floods occurred in the Redwood Creek basin in 1861, 1890, 1953, 1955, 1964, 1972, and 1975. The flood of 1964 was especially damaging and caused drastic changes in Redwood Creek, even though the peak flow of the 1964 flood was not unusually high (recurrence interval of 45–50 years; Coghlan, 1984). Harden and others (1978) discussed the disparity between flood size and magnitude of hillslope erosion and attributed it in part to the change in timber harvest activities.

The 1964 flood caused widespread aggradation in Redwood Creek and other nearby rivers. Channel changes were most severe in the upper basin, where both the storm and previous logging activity had been most intense. The most prevalent deposits in the upper reaches of Redwood Creek are gravel berms that are as much as 9 m high and consist of coarse gravel (fig. 2). Previous studies of the effects of the 1964 flood on nearby rivers (Helley and LaMarche, 1973) mention similar deposits. The berms were deposited almost continuously on both sides of the river in upstream areas, and in many areas they buried preexisting vegetated bars. Janda and others (1975) dated some conifers killed by the burial as over 200 years old. Also, in lower reaches sandy deposits from the 1964 flood overlie soils on flood-plain deposits which formerly received only fine-grained overbank deposits. This arrangement suggests that the 1964 aggradational event has been unmatched in historic time. Although Helley and LaMarche (1973) and Kelsey (1977) presented evidence of other periods of aggradation (in 1590, 1735, and 1861) in nearby drainage basins, evidence for such events in Redwood Creek is poorly documented.

Redwood Creek changes drastically in character from steep and narrow in headwater reaches, to wide and gently sloping in downstream reaches. In this study, Redwood Creek was divided into 39 reaches for detailed mapping (fig. 1). Reaches were distinguished on the basis of field observation and interpretation of aerial photographs regarding channel and valley width, bed material and bedforms, channel gradient, and streambank stability. Reaches range from 1 to 7 km in length. Kelsey and others (1981) described details of most study reaches.

In addition to the 39 reaches mentioned above, three general reaches (upper, middle, and lower) were defined (fig. 1). The upper reach is relatively steep (average channel gradient=1.2 percent) and bouldery. The valley is narrow and shows evidence of many past streamside landslides. Extensive gravel berms were deposited in this area during the 1964 flood, and many debris jams block the channel. The forest on the surrounding slopes is predominantly Douglas fir, of which 80 percent has been tractor logged since 1948. At the downstream end of the upper reach is a U.S. Geological Survey gaging station, above which the drainage area is 175 km².

In the middle reach, the valley becomes abruptly wider in the area called Redwood Valley. Earthflows are a dominant erosional process on hillslopes, and low (5-m high) alluvial terraces are prominent. With the exception of reach 20, which has a narrow meandering channel incised deeply into Pleistocene terraces, the channel in the middle reach is wide and has an average channel gradient of 0.45 percent. Logging impacts have not been as severe here as in the upper reach, but grazing, residential development, and road construction have affected this part of the basin. Downstream from Redwood Valley the valley narrows again, and here the channel is rocky with a moderate gradient of 0.35 percent and few terraces. Ninety-two percent of the forest in this middle reach was tractor and cable logged between 1948 and 1978 (chap. C, this volume). A gaging station upstream from Panther Creek measures flow from a drainage area of 424 km².

The lower reach flows mostly through national park lands. The upstream portion has a steep section called the gorge (1.4 percent gradient) where Redwood Creek flows among large boulders at the base of a prominent earthflow. Downstream of the gorge the valley becomes very wide and the channel gradient is gentle (0.1–0.2 percent). Little evidence of streamside landslides is present in this reach. The forest is predominantly redwood, of which 70 percent was logged by 1978. A gaging station is located at the U.S. Highway 101 bridge in Orick. The channel in the remaining 4 km downstream from the Orick gaging station is confined by flood protection levees built in 1968 and is influenced by tidal fluctuations.

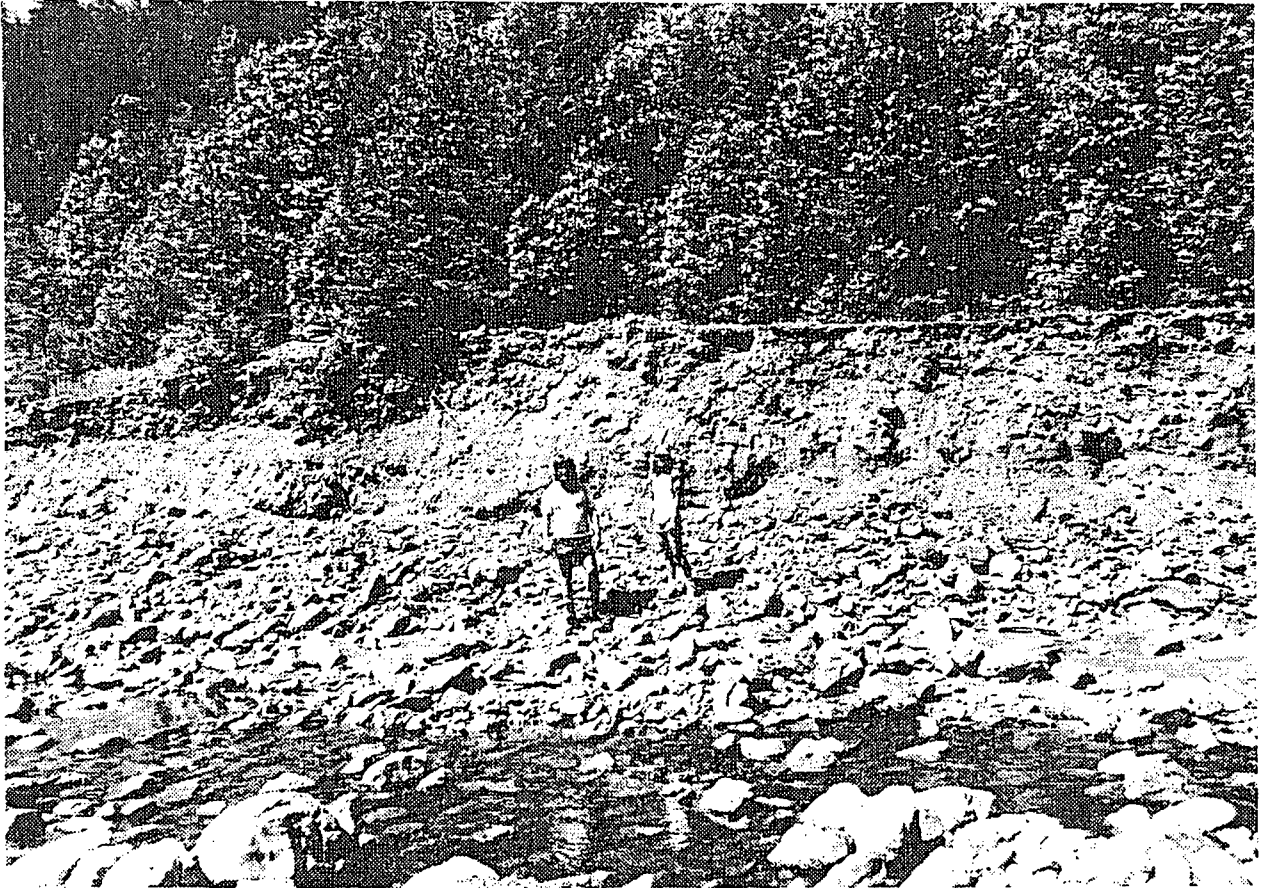


FIGURE 2. — Flat-topped gravel berm deposited in upper reach of Redwood Creek during December 1964 flood (photographed August 1983). Note coarse, unsorted nature of material, young trees growing on the surface, and location against valley wall away from active channel. Deposit was more extensive in 1964.

METHODOLOGY

AERIAL PHOTOGRAPHIC AND FIELD MEASUREMENTS

The first step in this study was to quantify the amount of alluvium stored in the Redwood Creek channel under pre-1947, undisturbed conditions. Under these conditions, sediment was stored in Redwood Creek as gravel bars, flood-plain deposits, and channel sediment below the thalweg. An estimate of the volume of this sediment was determined using aerial photographs taken in 1936, 1947, and 1954. The resolution and scale varied between three sets of photographs. The areas of the deposits were measured from the photographs with a planimeter, and heights of bars were estimated by comparison with surrounding trees, boulders, bridges, and other objects of known dimensions. The volume of sediment was calculated from the product of area of deposit and height above thalweg. Historical photographs and records were used to verify dimensions estimated from photographs. The tree canopy obscured the channel in some reaches but, in general, major features were visible. All measurements of bar heights were based on the elevation of the 1947 thalweg because it was assumed to be stable, neither aggrading or degrading. This assumption seemed reasonable because no significant aggradation had occurred in nearby basins since 1861 (Helley and LaMarche, 1973).

No attempt was made to estimate the amount of sediment below the 1947 thalweg, although this storage compartment may be significant in geologic time. Only a few drill logs are available (California Department of Transportation, unpub. data, 1927, 1963, 1987) which show alluvium in Redwood Creek to be less than 1.5 m thick at the State Highway 299 bridge and greater than 25 m thick near the mouth at the Orick U.S. Highway 101 bridge (fig. 1).

The type of field evidence used to distinguish the deposits that resulted from the 1964 flood are discussed in the following two paragraphs. Evidence for aggradation resulting from the 1964 flood is best preserved in the upper reach (fig. 1) where flat-topped gravel berms (fig. 2) were deposited. The top of the flood berms were assumed to represent the height to which sediment filled the channel during the flood. High water marks (silt lines and abrasion marks on tree trunks) found several meters above the tops of the berms provide evidence that the berm surfaces were actually the channel bed at flood stage. Also, aerial photographs taken in 1965 and 1966 show some areas where the berm surfaces were not yet incised at that time.

Downstream of the area where the massive, flat-topped berms were deposited, aggradation during the 1964 flood did not occur to as great of depths as above,

but was still widespread. In the downstream areas, large lobate bars composed of coarse cobbles and boulders were deposited. In 1980 these bars bore a thick growth of alder dating from 1964 to 1972 (fig. 3). In these downstream reaches channel aggradation was still sufficient to bury trees and large boulders (fig. 4). The volume of sediment deposited in this area as a result of the 1964 flood was estimated using the field evidence discussed above; aerial photographs taken in 1962, 1965, and 1966; bridge surveys; and discussions with local residents.

During the 1980 field season, field evidence of 1964 flood deposition was best preserved in the uppermost third of the watershed. Farther downstream, where channel changes were not as severe, later floods had reworked the 1964 deposits. Thus, the reliability of the volume estimates of sediment related to the 1964 flood decreases downstream. Accuracy of volume estimates probably ranges from ± 15 percent in the upper basin to ± 40 percent downstream.

Volumes of sediment stored in the 1980 channel of Redwood Creek were measured in the field. Where storage features were small the dimensions were measured by tape or rangefinder in the field. For larger bars and terraces an accurate ground scale was measured in the field, transferred to 1978 aerial photographs (enlarged to 1:2,000 scale), and the area of the feature was planimetered from the photographs. Heights of gravel bars and terraces above the 1980 thalweg were surveyed with a hand level and stadia rod for both small and large features. In addition, all bars were described in terms of the age and type of vegetation growing on them, the size of material (boulder, cobble, pebble, or sand), and the presence of buried trees or artifacts. The accuracy of the 1980 measurements of volume of sediment stored above the thalweg is considered excellent (probably within ± 10 percent of the actual value).

Several approaches were used to estimate the volume of sediment stored due to channel bed aggradation (that is, stored below the 1980 thalweg but above the 1947 level). Descriptions of channel changes by local landowners provided some information. Buried tree stumps, boulders, car bodies, and other objects that were partly exhumed gave an indication of recent amounts of aggradation at many locations. At a few sites, records from bridge surveys showed a history of aggradation and subsequent downcutting.

Use of time-sequential aerial photographs also helped determine changes in the amount of sediment stored on the channel bed. At several localities boulders in the channel, which were visible on the 1962 aerial photograph but totally buried on the 1966 photographs, were partly exposed in 1980. Locally, bedrock outcrops were exposed in the channel bed indicating no aggradation in

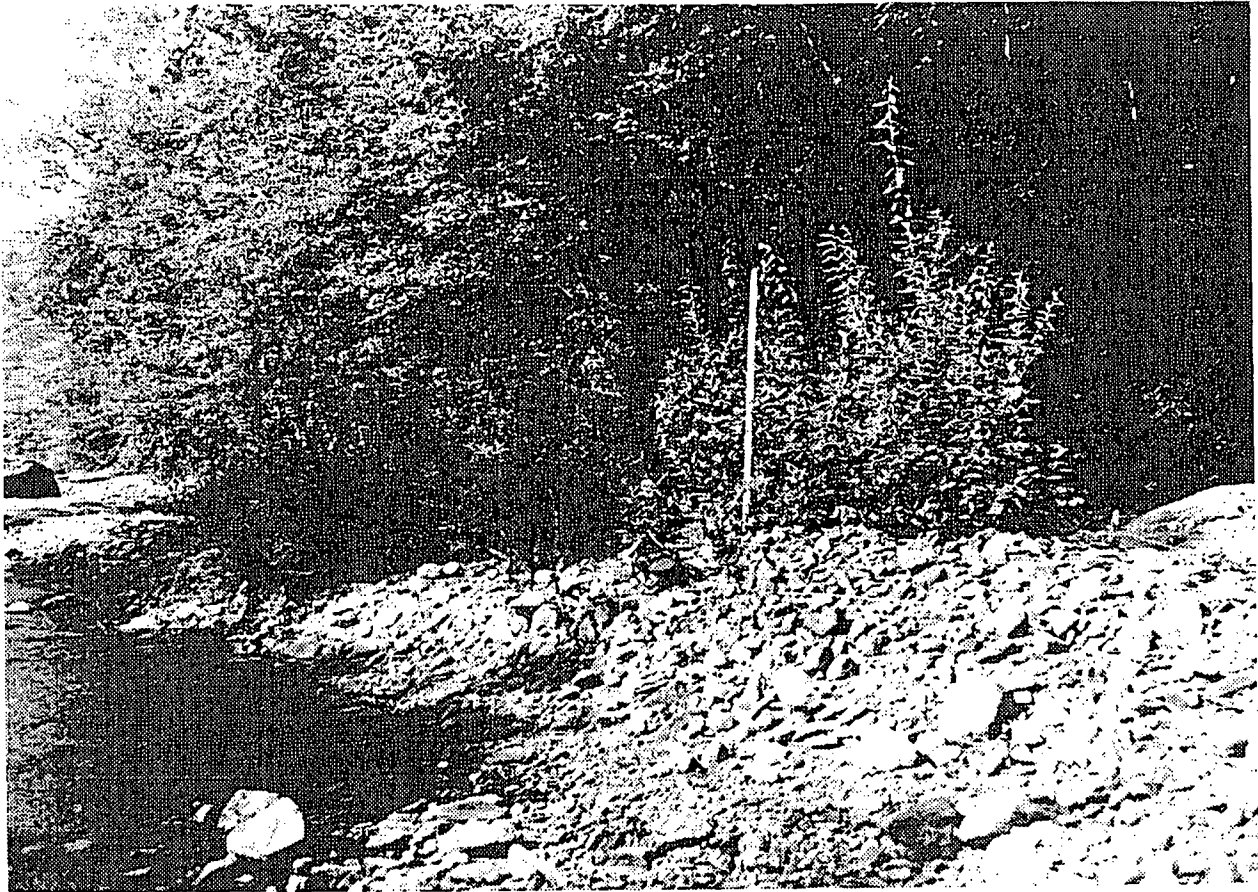


FIGURE 3.—Coarse lobate bar located at kilometer 30 in Redwood Creek (photographed in August 1983). Note thick growth of alder on bar surface, which dates from 1972. There is no evidence of recent movement of bar surface. Height of rod is 2 meters.

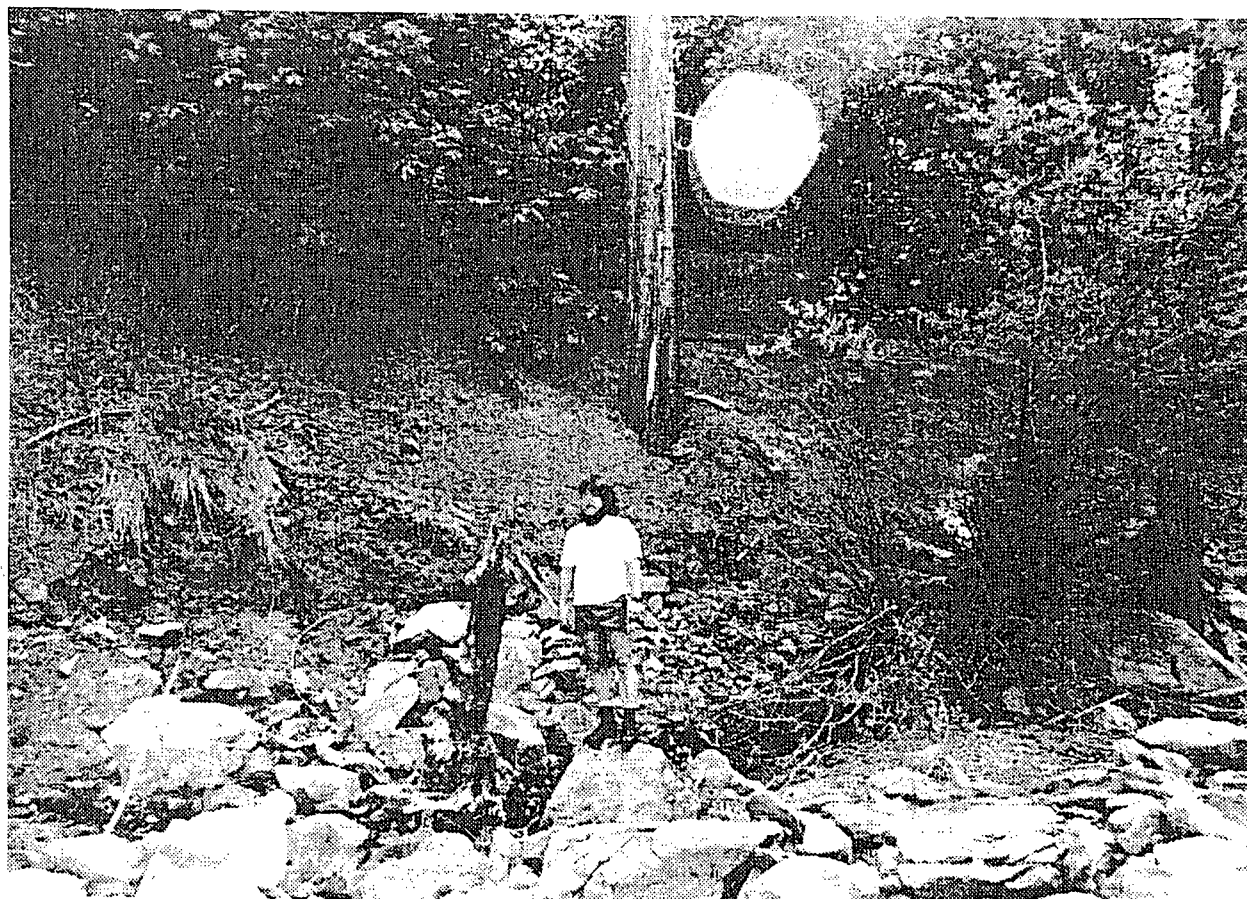


FIGURE 4.—Trees buried and killed by aggradation attributed to flood of 1964. Photographs taken August 1983 near kilometer 9.

1980 at those points. Finally, annual surveys of channel cross profiles document changes in bed elevation in Redwood Creek for the last 9 years. Nolan and Marron (chap. N, this volume) discuss details of the cross-profile surveying and its results. Estimates of volumes of channel bed sediment were subject to substantial error, probably up to 50 percent of the true value.

The thickness of recent overbank deposits was estimated by digging shallow trenches or taking soil auger samples on flood-plain deposits. Fresh deposits were distinguished by the lack of weathering or organic accumulation in the sands and silts lying above an older humic horizon. Recent layers ranged in thickness from 0.1 to 1.0 m.

SCOUR AND FILL MEASUREMENTS

To calculate residence times of stored sediment, the quantity of sediment mobilized in the channel bed during high flows must be known. Two approaches were used to estimate the depth of scour and fill in the thalweg and on bars during winter flows. First, scour chains were installed in 1981 at seven cross sections in Redwood Creek (fig. 1). Three to five chains were installed at each section. Pits were dug with a backhoe as deeply as possible (1.2-2 m) into the channel bed. Lengths of steel chain 0.6 cm thick were anchored with steel rods 0.6 cm in diameter at the base of each pit, and pits were backfilled while the chain was held vertically. Excavated areas were compacted and smoothed to reestablish original bed elevation and shape. Cross sections and chain locations were surveyed and photographed. Because backfilling a pit does not restore the fabric and stratigraphy of the original bed material, scour chain areas might behave differently than the rest of the channel bed at high flows. Nevertheless, postwinter surveys showed no differential scour or fill at scour chain locations compared with adjacent unexcavated portions of the channel bed. After winter flows receded, chains were excavated with a backhoe, the depth of burial was measured, and the entire cross section was resurveyed to determine the amount of scour and subsequent fill at chain locations.

The second method of determining depth of scour was the use of U.S. Geological Survey discharge measurement notes. These measurements are available for seven stations on Redwood Creek for a range of discharges. They indicate the magnitude of scour and fill during successive measurements at a cross section during periods of high discharge from 1975 to 1981.

RELATIVE AGE ESTIMATES FOR SEDIMENT

In order to estimate the length of time sediment will remain on the valley floor, it is necessary to know the age

of a deposit, that is, the time since the sediment was deposited (Dietrich and others, 1982). Because the absolute age of many deposits in Redwood Creek was not known, a relative age scale was used to categorize deposits. Estimates of relative age were based on the "activity level" of a deposit, ranging from easily mobilized to stable.

Several lines of evidence were used to support the relative age estimates. Trees growing on deposits were dated wherever possible to obtain a minimum age for the sediment. The presence of annuals, shrubs, and other perennials indicated whether or not sediment had moved recently. Time-sequential aerial photographs showed the time period in which a new feature was deposited or when an old feature was eroded. Scour chains and successive discharge measurements from cableways indicated to what depth the channel bed was active during flood flows.

Using the indicators mentioned above, a rating scheme was developed to classify sediment deposits ranging from "young" or active to "old" or stable. The four categories, or sediment reservoirs, defined within this range are: active, semiactive, inactive and stable (figs. 5A, B).

Active sediment is transported during moderate flood flows having a recurrence interval of 1 to 5 years. Vegetation on active sediment is absent or sparse. Cross-section survey data and scour-chain data show channel shifting, or scour and fill of active sediment, during moderate flows. Bed sediment that occurs to the depth of scour estimated from chains and cross-sectional surveys is categorized as active. In upstream areas, active sediment may be trapped by weak or unstable debris jams that are subject to collapse under moderate flood flows. Active sediment may also be found in bars less than 1 meter high that are composed of pebbles, sand, and some cobbles.

Semi active sediment is mobilized during higher flows, such as a 5 to 20-year flood. At such flows, sediment covered with shrubs and young trees is mobilized, as well as some cobble and boulder deposits.

Inactive sediment is stationary until 20- to 100-year floods occur. Such flows may mobilize inactive sediment found in coarse lag deposits; gravel berms 3 to 5 m high; strong, coherent log jams; and flood-plain deposits.

Stable sediment has not been mobilized historically and constitutes some flood-plain and terrace deposits (fig. 6). Most sediment stored in alluvial terraces covered with old-growth forests is not in transport in the short term, although a fresh veneer of silt and fine sand may be deposited on them at very high flows. In this respect these terraces are not abandoned flood plains (as terraces are defined by Leopold and others, 1964), because fine-grained deposition still occurs on them during large floods. Some bank erosion of stable terraces occurs, and

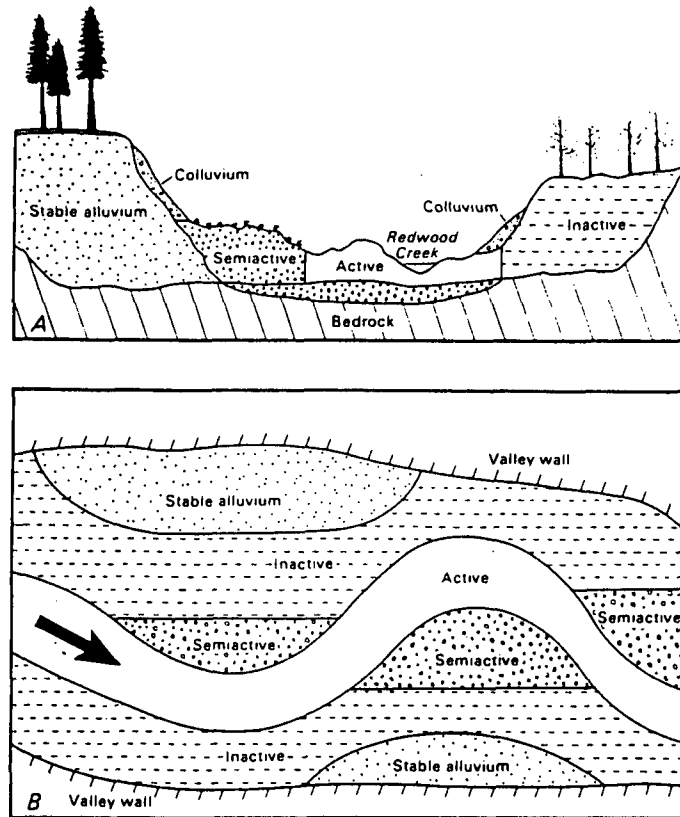


FIGURE 5. — A, Schematic cross section of four sediment reservoirs in Redwood Creek: active, semiactive, inactive, and stable. B, Schematic plan view of four sediment reservoirs in Redwood Creek.

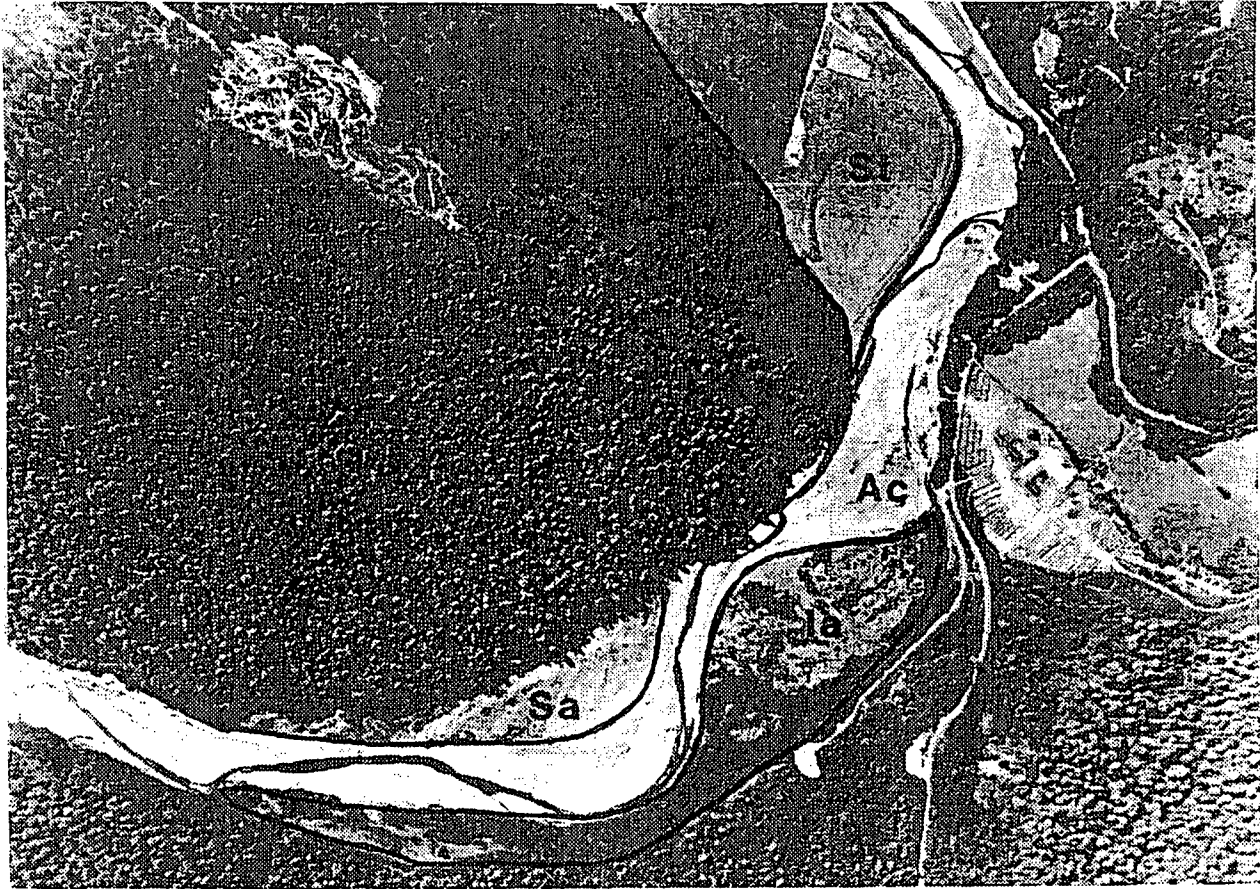


FIGURE 6. — Classification of sediment reservoirs shown on a vertical aerial photograph (1978; scale 1:6000) of Redwood Creek, kilometer 100 near Orick; flow is from left to right. Classes are active (Ac), semiactive (Sa), inactive (Ia), and stable (st).

mass movement occasionally reactivates sediment stored on terraces well above the present channels. For this study, only stable terraces adjacent to the channel are included; sediment on terraces more than 10 m above the channel was not measured because such sediment is not currently affected by Redwood Creek.

In the flood plain near the mouth of Redwood Creek, great quantities of stable alluvium are stored, down to an unknown depth. However, flood levees built in 1968 isolate the flood plain from the channel, and no erosion or deposition has occurred on the flood plain since the levees were built. Because the flood plain has been artificially stabilized, it is not included in the analysis of the present distribution of stored sediment. Nevertheless, an estimated $23.4 \times 10^6 \text{ m}^3$ of fine-grained alluvium is stored in the flood plain above the elevation of the present stream thalweg.

RELATION BETWEEN SEDIMENT MOBILITY AND SIZE

Physical characteristics of sediment in storage influence whether it will be transported as bedload or suspended load. The character of stream sediment reflects properties of the soil mantle, underlying geology, dominant hillslope erosion processes, and fluvial sediment transport processes. Size distribution analyses of sediment samples from Redwood Creek (Iwatsubo and others, 1975) indicate that 2 mm is the particle-size division between bedload and suspended load. Size distribution and lithologic analyses of bed material are presented by Nolan and Marron (chap. N, this volume). Bulk densities of stored sediment were measured with a Soiltest Volume Measurer at several sites in the drainage basin. Relative resistance of bed material to breakdown during transport was determined through an attrition experiment, as described below.

TEMPORAL CHANGES IN SEDIMENT STORAGE

Under undisturbed conditions, before 1947, the Redwood Creek channel was narrow and sinuous, with a thick canopy of trees and few landslides. Nolan and Marron (chap. N, this volume), Janda and others (1975), and Best (1984) describe undisturbed basin conditions in more detail. Measurements from aerial photographs indicate that under pristine conditions $11 \times 10^6 \text{ m}^3$ of sediment was stored along Redwood Creek. Fifty percent of this sediment was stored in stable terraces. Differentiation of active, semiactive, and inactive sediment from early photographs was not feasible.

As a result of the 1964 flood, the total volume of stored sediment along Redwood Creek increased to $16 \times 10^6 \text{ m}^3$, which is 1.5 times greater than the volume stored in

1947. After the 1964 flood and its associated aggradation, several years of moderate flows eroded roughly half of the sediment from aggraded upstream reaches. Some of this eroded material was deposited in downstream reaches, where cross-section surveys show recent aggradation.

Large floods in 1972 and 1975 did not cause major deposition in the upper reach, but they did leave flood deposits downstream. For example, flat-topped gravel berms were deposited in Redwood Valley, and alluvial terraces in the park received fresh layers of silt. Deposition resulting from the 1972 and 1975 floods was not quantified separately in this study. Because of the redistribution of 1964 flood deposits downstream, and the addition of sediment from the 1972 and 1975 floods, the total volume of sediment measured along Redwood Creek in 1980 was slightly greater than the 1964 total. The total volume of sediment in 1980 would have been even greater than it was, but approximately $1.15 \times 10^6 \text{ m}^3$ ($2.2 \times 10^6 \text{ Mg}$) of gravel was excavated from the bed of lower Redwood Creek between 1953 and 1978 (Milestone, 1978). This amount represents 23 percent of the increase of sediment storage over 1947 levels.

The spatial distribution and cumulative volumes of total stored sediment for the three time periods (1947, 1964, 1980) are displayed in figure 7. In 1947, the center of mass of total stored sediment along Redwood Creek was at kilometer 64; in 1964 it shifted upstream to kilometer 61, and by 1980 it had shifted downstream to kilometer 78. Nolan and Marron (chap. N, this volume) describe how the locus of maximum aggradation has moved downstream in recent years, as inferred from cross-sectional data.

A comparison of the three curves in figure 7 shows some other differences between the three time periods. The slopes of the three curves increase sharply at kilometer 42 (near Redwood Valley). These increases indicate that Redwood Valley was a high-storage area in 1947 and has remained so. The reach between Lacks and Slide Creeks (kilometer 63 to kilometer 80) is narrow and stores relatively little sediment, as indicated by gentle slopes of the three curves. High storage areas downstream from the gorge (kilometer 80) show a rapid increase in storage volume, as indicated by the increase in slope of the curves. The rate of increase of stored sediment under pre-1947 conditions downstream from the gorge was less than in either 1964 or 1980.

Figure 8 shows that all individual study reaches stored more sediment in 1980 than in 1947, although storage in some areas was not much higher in 1980 than in 1947. All reaches upstream from reach 14 stored more sediment in 1964 than in 1980, and downstream reaches stored more in 1980 than in 1964. This increase in storage is due to the downstream transport and redeposition of sediment orig-

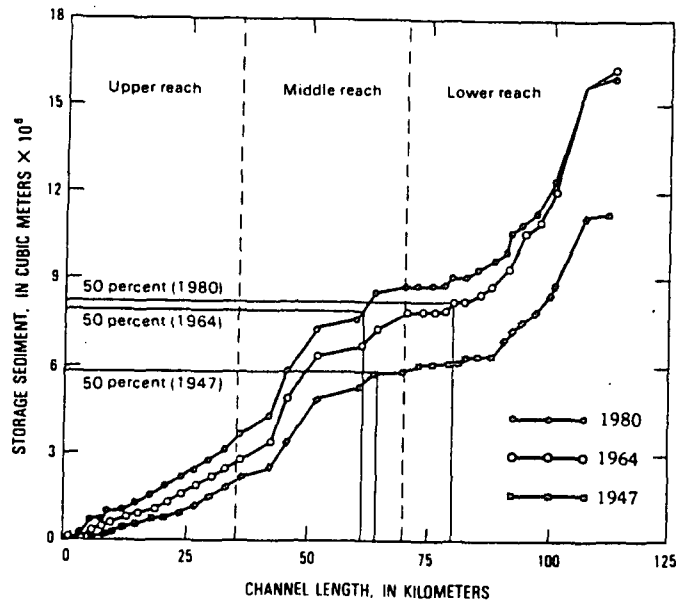


FIGURE 7.—Cumulative volumes and spatial distribution of stored sediment in Redwood Creek as of 1947, 1964, and 1980. Center of mass for each time period indicated by the "50%" line.

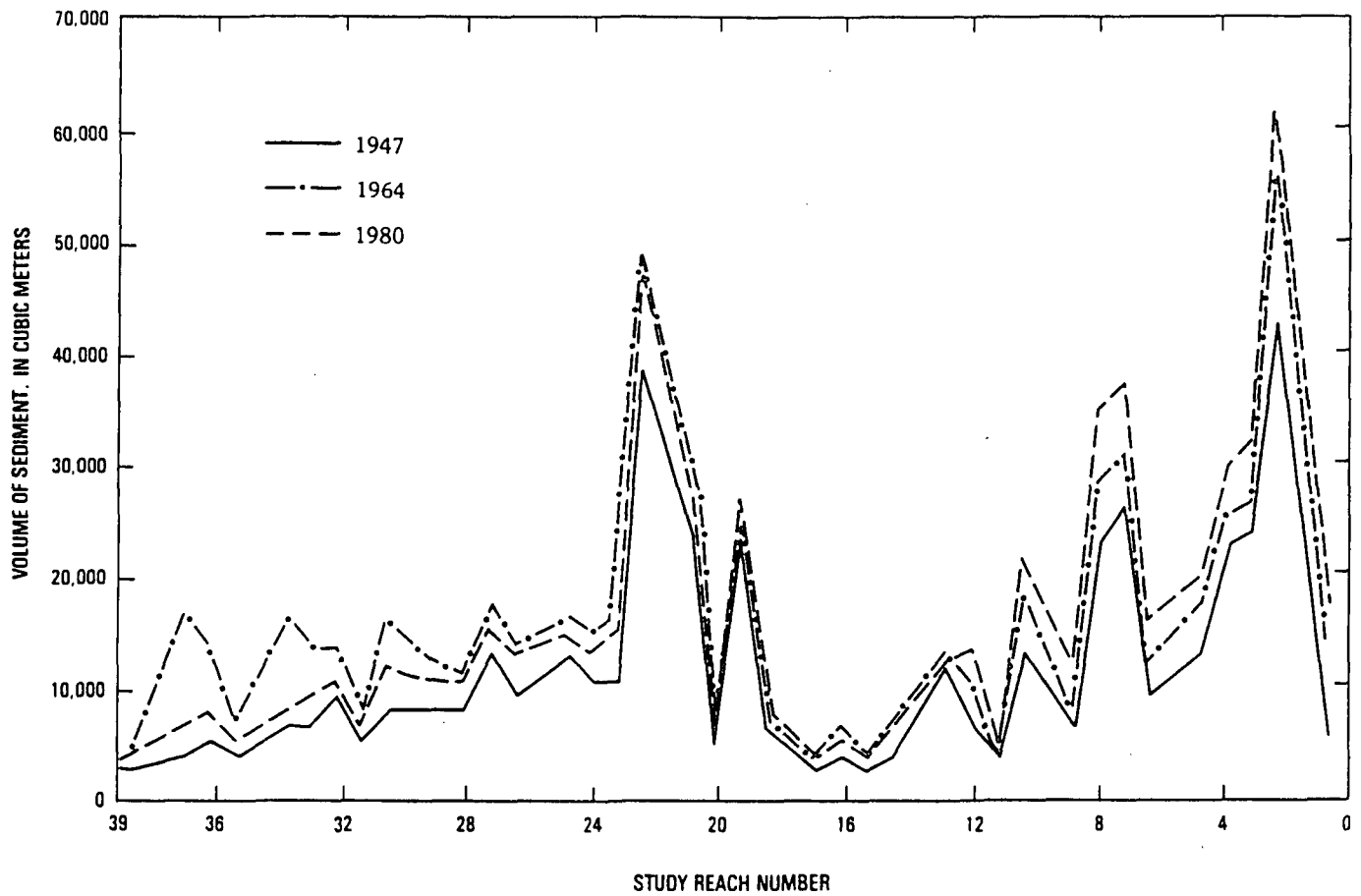


FIGURE 8.—Volumes of stored sediment in individual study reaches as of 1947, 1964, and 1980. Locations of study reaches shown on figure 1.

TABLE 1.—Net changes in stored sediment at Redwood Creek, 1947-64, 1964-80, and 1947-80

["+" indicates deposition; "-" indicates erosion]

Reach	(t) ¹ 1947 to 1964	Mg/km ²	1964 to 1980	Mg/km ²	1947 to 1980	Mg/km ²	Current bedload transport rates ² (Mg/km ² /yr)
Upper	+2.8×10 ⁶	16,000	-1.5×10 ⁶	-8,600	+1.3×10 ⁶	7,400	530
Middle.....	+2.5×10 ⁶	11,700	-.3×10 ⁶	-1,400	+2.2×10 ⁶	10,300	400
Lower	+3.8×10 ⁶	11,500	+2.1×10 ⁶	+6,300	+5.9×10 ⁶	17,800	240
Total channel.....	+9.1×10 ⁶	12,600	+.3×10 ⁶	+400	+9.4×10 ⁶	13,000	

¹ Assumes a bulk density of 1.92 g/cm³.² Based on sediment-discharge measurements, 1971-80.

inally deposited in upstream areas in 1964, deposition from the 1972 and 1975 floods in lower reaches, and an increase in the volume of material from landslides in the lower basin between 1966 and 1980 (chap. J, this volume, fig. 9).

Table 1 summarizes changes in stored sediment along the three sections of the creek in 1947, 1964 and 1980. Excess sediment is defined as the increase of sediment over 1947 levels. As of 1964, a total of 4.7×10^6 m³ (9.1×10^6 Mg) of "excess" sediment had been deposited. An excess of sediment over 1947 volumes still existed for all reaches of Redwood Creek in 1980 (table 1). The total volume of excess sediment was greatest in the lower reach (5.9×10^6 Mg). As of 1980, 1.3×10^6 Mg was still in the upper basin, which represents 46 percent of the 1947 to 1964 sediment increase.

The total volume of excess sediment is not a direct indication of future sediment movement. Instead, the type of storage reservoir will determine the potential for future erosion and transport of excess sediment. For example, in the upper reach 850,000 Mg (or 65 percent) of the present excess sediment is stored in inactive gravel berms. The channel bed itself has degraded very slowly since 1977 (chap. N, this volume). Much of the excess sediment in the upper reach will probably persist for decades.

In contrast to the upper reach, the lower reach stored 5.9×10^6 Mg of excess sediment in 1980, and 70 percent of that amount is in the aggraded active channel bed. Here it is likely that the channel will continue shifting and braiding for many years. Several years of moderate flows will begin to flush excess sediment downstream and out of the system. Cross sections in this reach show the greatest magnitude of recent change (chap. N, fig. 15, this volume).

As of 1980, total stored sediment above the 1947 datum in Redwood Creek is equivalent to 13,000 Mg/km². This amount of storage represents a large in-channel sediment supply, and indicates that bedload transport rates will be high in the future.

EFFECTS ON BEDLOAD TRANSPORT

An example of the strong effect channel-stored sediment can have on bedload transport can be seen by

examining data from the upper reach. Between 1965 and 1980, 1.5×10^6 Mg of sediment (or 8,600 Mg/km²) were eroded from the upper reach (table 1). Aerial photographs taken in 1972 and field evidence suggest that most of this sediment was eroded within 8 years of its initial deposition in 1964. This means that the bedload sediment yield due to erosion of flood deposits at the Blue Lake gaging station was probably 8,600 Mg/km², or 1,075 Mg/km²/yr, for the first 8 years following the 1964 flood. Currently, the bedload transport rate measured at this station is only 530 Mg/km²/yr (James Knott, USGS, written commun., 1981). Unfortunately no sediment discharge measurements are available before 1973 for this station. Stations on nearby rivers, however, showed large increases in sediment yield for several years after 1964 (Knott, 1974). On the Trinity River at Hoopa, for example, the long-term bedload transport rate is 100 Mg/km²/yr. In water year 1965 (which includes the December 1964 flood) bedload transport was about 1,300 Mg/km²/yr, and in the following 5 years bedload transport rates remained elevated at about 300 Mg/km²/yr (Knott, 1974). These measurements reflect not only bedload from the erosion of flood deposits but also bedload derived from several sediment sources active in the basin (tributary input, landslides, gullies, bank erosion) as well as channel scour.

A similar comparison at the old South Park Boundary gaging station (kilometer 80) shows an estimated 1965-72 bedload sediment yield of 475 Mg/km²/yr due to erosion of flood deposits, as opposed to the current measured value of 400 Mg/km²/yr. These data suggest that erosion of the 1964 flood deposits in the period from 1965 to 1972 resulted in bedload transport rates as high as the total bedload sediment yield currently measured in Redwood Creek from all sediment sources. Because other sediment sources were also active from 1965 to 1972, total bedload sediment yield for that period was probably much higher than at present.

Several other studies support the suggestion of high bedload transport rates for the period 1965 to 1972. Nearby rivers responded to an increase in sediment load from the 1964 flood with changes in channel geometry that resulted in high bedload transport rates (Lisle, 1982). Madej (1982) found that a stream in western

EXPLANATION

- September 1981
- October 1982
- = Scour chain lost
- = Top of scour chain relocated

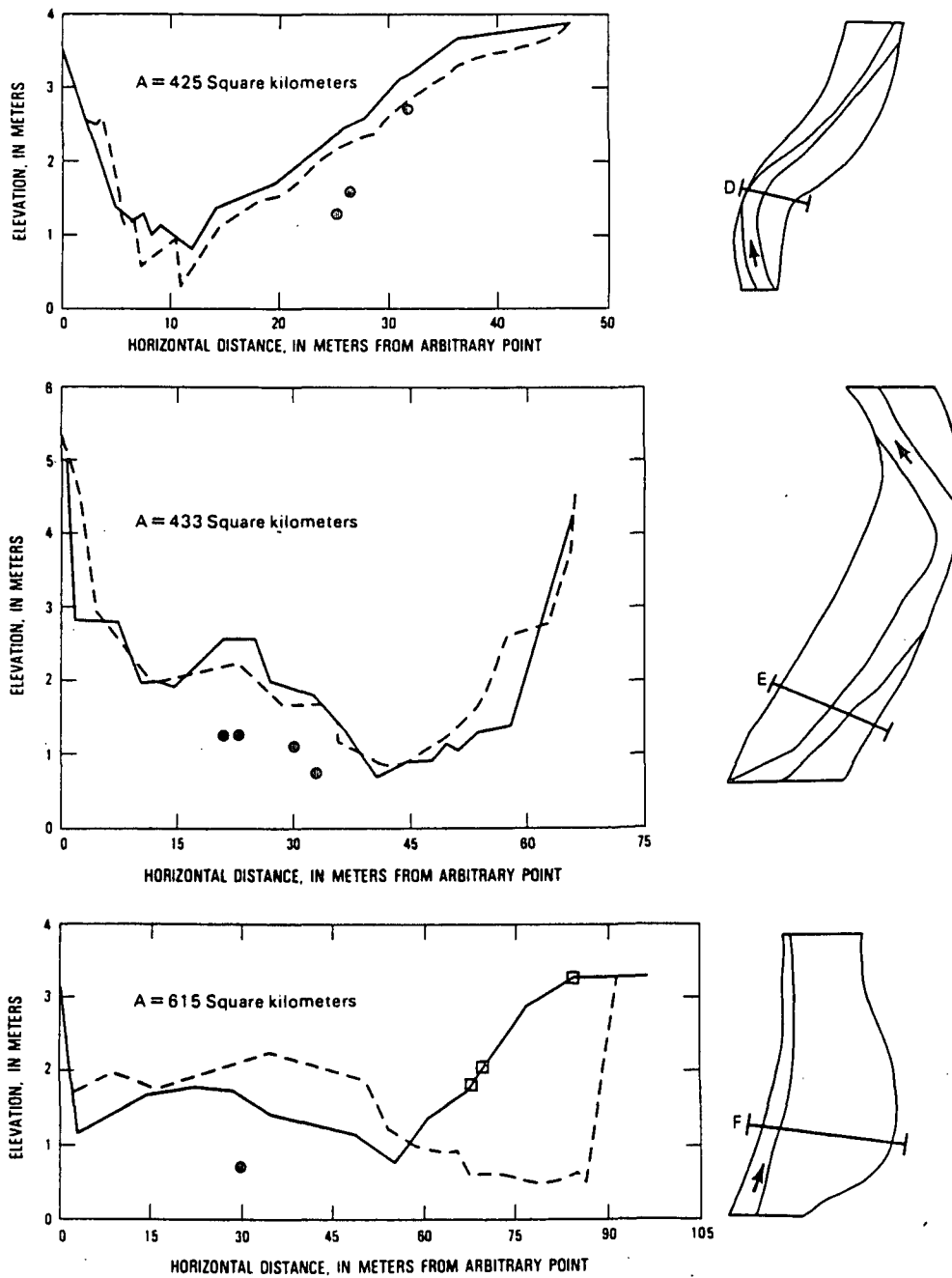


FIGURE 9.—Cross-sectional profiles of Redwood Creek for 1981 and 1982. An 'x' indicates locations of top of scour chains after winter of 1981 to 1982. Plan maps show relation of cross section to channel. Scour-chain sites are shown in figure 1.

TABLE 2.—*Depths of scour and fill in channel bed at scour chain sites*
[* = Chains not recovered. Scour depth listed is depth of hole dug at scour-chain sites without hitting chain. NA - note available.]

Site	Chain Number	Scour (m)	Fill (m)
A	1*	>0.2	NA
	2*	> .6	NA
B	1*	> .6	NA
	2*	> .6	NA
	3*	> .6	NA
C	1*	>1.2	NA
	2*	>1.2	NA
	3*	>1.2	NA
D	1	.9	.7
	2	.8	.4
	3	.3	.1
E	1	1.2	.8
	2	1.2	.7
	3	.7	.6
F	4	.9	.8
	1	1.0	1.3
	2	1.0	1.3
G	3*	>1.8	NA
	4*	>1.8	NA
	5*	>1.8	NA
	1*	>1.2	NA
	2*	>1.2	NA
	3*	>1.2	NA

Washington stream became wider and shallower and that bed shear stress changed in order to transport an increased sediment load. Redwood Creek responded similarly in that width increased and depth decreased, suggesting that the resulting distribution of bed shear stress should have permitted higher bedload transport rates after the 1964 flood.

DEPTHS OF SCOUR AND FILL

Scour-chain data indicate the depth of channel bed mobilization during moderate flood flows and the degree to which storage features were active. The data show that the magnitude of scour and fill in Redwood Creek is large, even at moderate flows. Scour and subsequent fill did not modify the shape of gravel bars in many cases. Although a gravel bar retains the same form from year to year, a substantial amount of material may be transported through it (Leopold and others, 1964).

Figure 9 shows examples of scour and fill from three of the seven scour-chain sites (fig. 1). The depth at which chains were found indicates the depth of scour and subsequent fill during winter flows of 1981 to 1982. In table 2 the actual amount of scour and fill at each scour-chain location is given. At sites D and E, general cross-section form did not change after episodes of scour and fill. It was not possible to install chains directly in the thalweg; however, scour in the bed adjacent to the thalweg and on low bars was 0.7 to 1.2 m deep. At sites D and E the channel bed was mostly cobbles ($D_{50}=32$

mm), but boulders 25 to 55 cm in diameter were deposited on top of the chains during the fill episode. Bed material below a coarse armor layer generally consisted of coarse sands and pebbles. At a depth of 1-2 m, however, there was generally a layer of large boulders (1-1.2 m in diameter). Scour did not extend below this layer of large boulders, and it is unlikely that this layer would be mobilized even at higher flows. The high bar at the right bank of site D was classified as semiactive because little modification occurred. Otherwise sediment in sites D and E was classified as active.

Site F showed major changes after winter flows. The thalweg shifted toward the right bank. A scour chain near the left bank indicated 1.0 m of scour and 1.3 m of fill. Several other chains, 2 m in length, were lost because of 25 m of lateral erosion at the right bank. Bank erosion was widespread in this area and was not localized at chain locations. The gravel deposit at the right bank had previously been classified as semi-active because of its vegetative cover of grasses and shrubs. Excavation of gravel from the bed downstream from site F during the fall of 1981 may have caused the thalweg to shift in this direction and erode the bar. The remainder of the sediment in this cross section was classified as active and consisted mostly of sand and pebbles.

Discharge measurement notes indicate the magnitude and location of channel bed scour and fill during moderate to high flood flows (flows with recurrence intervals of 1 to 10 years). Discharge measurement notes were available for seven stations on Redwood Creek for various storms. Figure 10 shows examples of scour and fill at three stations during the flood of January 13-14, 1980, at discharges near bankfull. Station 11481500 (kilometer 35.5) is located in the upper basin, and the channel bed consists of cobbles and some boulders ($D_{50}=45$ mm). During this flood the channel bed was mobilized to a depth of 0.1 to 0.2 m with some fill at the right bank. Downstream at station 11482260 (kilometer 92), where the bed consists of sand and pebbles with a few cobbles ($D_{50}=22$ mm), the bed was scoured to a depth of 0.6 to 1.3 m at the peak of the flood and filled during receding flows. The postflood and pre-flood cross sections are similar. Successive cross-section surveying done only at low flows would not have indicated the depth of sediment movement at these sections.

Sediment at the sites of channel cross profiles shown in figure 10 was all classified as "active" because it was mobilized at moderately low flows. Because gaging stations are usually located in straight narrow reaches without extensive gravel berms or low terraces, or are located at bridge sites on bridges where the channel is confined, semiactive and inactive sediment are not likely to be represented at such sites.

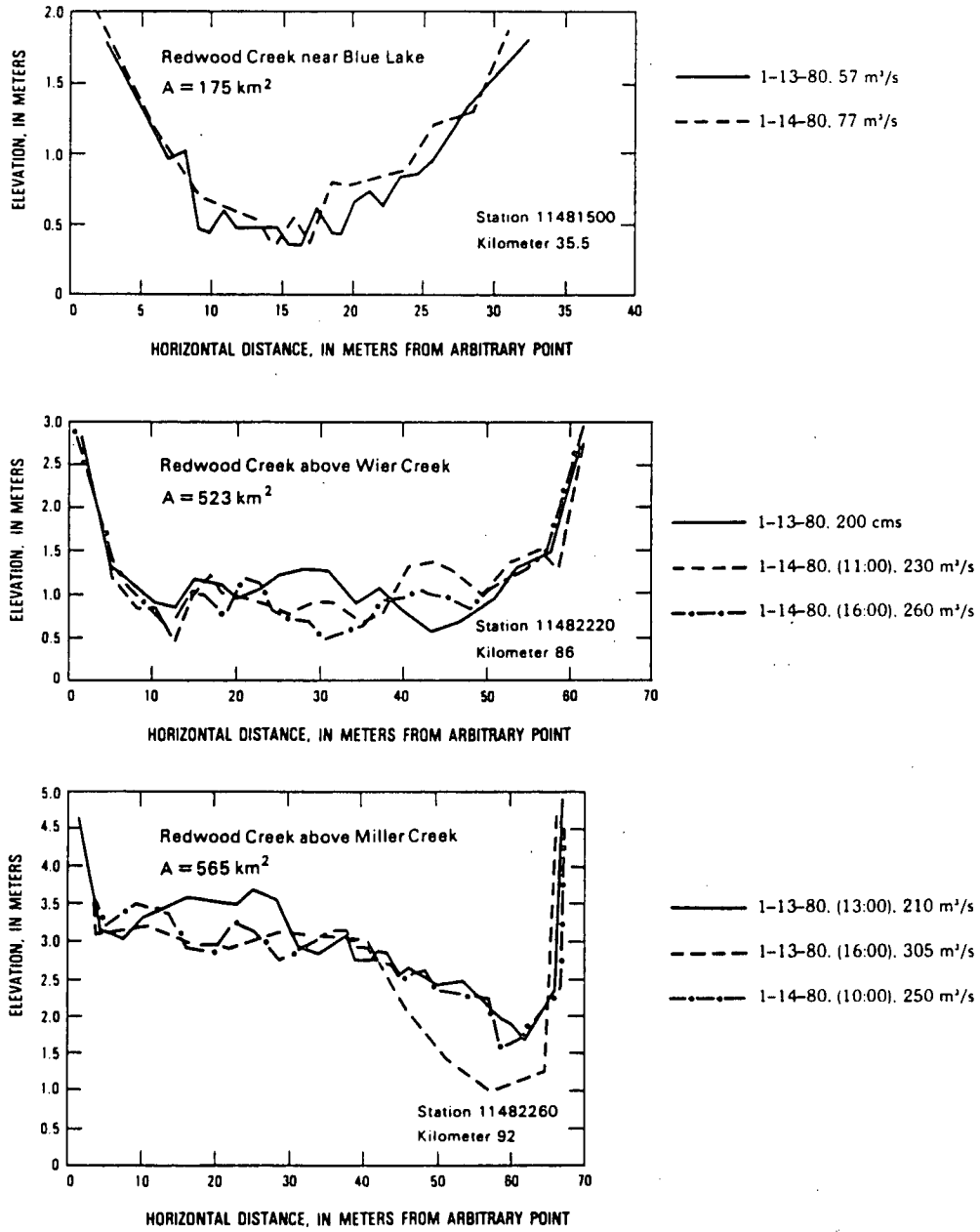


FIGURE 10.—Cross-sectional profiles of Redwood Creek at stream-gaging stations showing changes in bed elevation during flood of January 13-14, 1980.

U.S. Geological Survey current meter discharge measurement notes for 1972 to 1983 (table 3) were used to generalize the extent of scour at different flows at different gaging stations. To compare equivalent discharges for different stations, discharge data were transformed into a dimensionless index, $Q/Q_{1.2}$, where $Q_{1.2}$ is the discharge with a 1.2-year recurrence interval for that station. Estimates of $Q_{1.2}$ were based on equations given in "Magnitude and Frequency of Floods in the United States" (Young and Cruff, 1967, p.12). The maximum depths of scour for several discharges were plotted for three stations (fig. 11). Best fit regression curves were computed for each station. The plotted points are scattered, but the correlations are significant at the 95-percent confidence level. In general, depth of scour increases downstream for equivalent discharges, and depth of scour increases with increasing discharge at a given station.

BREAKDOWN OF BED MATERIAL

Several lines of evidence indicate that bed material breaks down rapidly into smaller clasts in Redwood Creek. First, bedrock in the basin is highly sheared and fractured and in general is very friable. Preliminary data suggest that roundness of bed-material particles generally increases downstream. In the upper basin, bedload makes up 20 percent of the total load; at the mouth, 11 percent (Knott, 1981, unpublished data). Suspended sediment discharge evidently increases slightly downstream, from 2,100 Mg/km²/yr in the upper basin to 2,200 Mg/km²/yr at the mouth (Knott, 1981, unpublished data). The incidence of cracked cobbles exposed at low flow on gravel-bar surfaces is high throughout the basin. Lastly, a tumbling experiment showed a high rate of reduction in weight for particles 2 to 90 mm in diameter.

The tumbling experiment used a Los Angeles Rattler Machine, a 0.7 m diameter revolving steel barrel. Mounted on the interior wall was a steel shelf, 9 cm in width, which caused material to freefall in the cylinder during part of each revolution. Sediment was tested dry because water could not be used in the machine. These two factors created an environment different from a natural stream channel. Attrition rates calculated from these "tumble kilometers" cannot be directly converted to actual stream transport distances, but relative changes in weights of size classes should represent relative attrition rates in the true stream channel.

For the experiment, two 12-kg core samples of bed material were collected. One core was collected upstream from Copper Creek at kilometer 77 (sample 1) and the other at kilometer 89 upstream from Tom McDonald Creek (sample 2). These cores were analyzed

TABLE 3.—Scour depths estimated from USGS current meter discharge measurements

Date	Maximum Depth of Scour (m)	Discharge (cms)	Q/Q _{1.2}
Redwood Creek at Blue Lake, kilometer (Q _{1.2} =120cms)			
2/19/75.....	0.6	180	1.5
2/26/76.....	.3	78	.7
2/26/76.....	.3	65	.5
2/28/79.....	.3	40	.3
1/13/80.....	.2	59	.5
1/14/80.....	.3	77	.6
12/22/81.....	.5	32	.3
1/26/83.....	.9	158	1.3
Redwood Creek above Harry Weir Creek, kilometer 85.8 (Q _{1.2} =224cms)			
4/01/74.....	1.6	379	1.7
2/26/76.....	.8	207	.9
2/26/76.....	.8	200	.9
12/14/77.....	1.0	456	2.0
12/15/77.....	.6	259	1.2
1/19/78.....	.6	136	.6
2/28/79.....	.4	140	.6
1/14/80.....	.8	231	1.0
1/14/80.....	.5	259	1.2
2/10/82.....	.6	270	1.2
2/16/82.....	.3	213	1.0
Redwood Creek at Orick, kilometer 104.4 (Q _{1.2} =289cms)			
1/22/72.....	2.9	974	3.4
3/03/72.....	1.5	631	2.2
3/19/75.....	1.3	416	1.4
2/26/76.....	.9	252	.9
12/15/77.....	.9	311	1.1
1/19/78.....	.4	171	.6
1/1480.....	.5	328	1.1
12/14/81.....	.4	163	.6
12/22/82.....	1.3	195	.7
1/24/83.....	1.2	121	.4

for size distribution and lithology. Analyses of the samples showed 5 percent (sample 1) and 15 percent (sample 2) of the sediment particles by weight were less than 2 mm in diameter. The samples were run for a total of 13 "tumble kilometers," at which point two-thirds of the material (sample 1, 64 percent; sample 2, 69 percent) had broken down into the less-than-2mm size fraction (fig. 12).

Bed material greater than or equal to 8 mm in diameter used in the experiment was classified according to rock type: sandstone, schist, or other (chert, conglomerate or metavolcanic). The size fraction greater than or equal to 8 mm composed over two-thirds (66 and 78 percent) of the original bed material. Schist originally made up 20 and 27 percent of the bed material by weight for samples 1 and 2, respectively, and sandstone, 63 and 67 percent. The fact that more sandstone by weight exists in the channel bed, even though the portions of the basin underlain by schist and sandstone are approximately equal, suggests that either breakdown of schist particles is more rapid or that sandstone terrain contributes more coarse sediment.

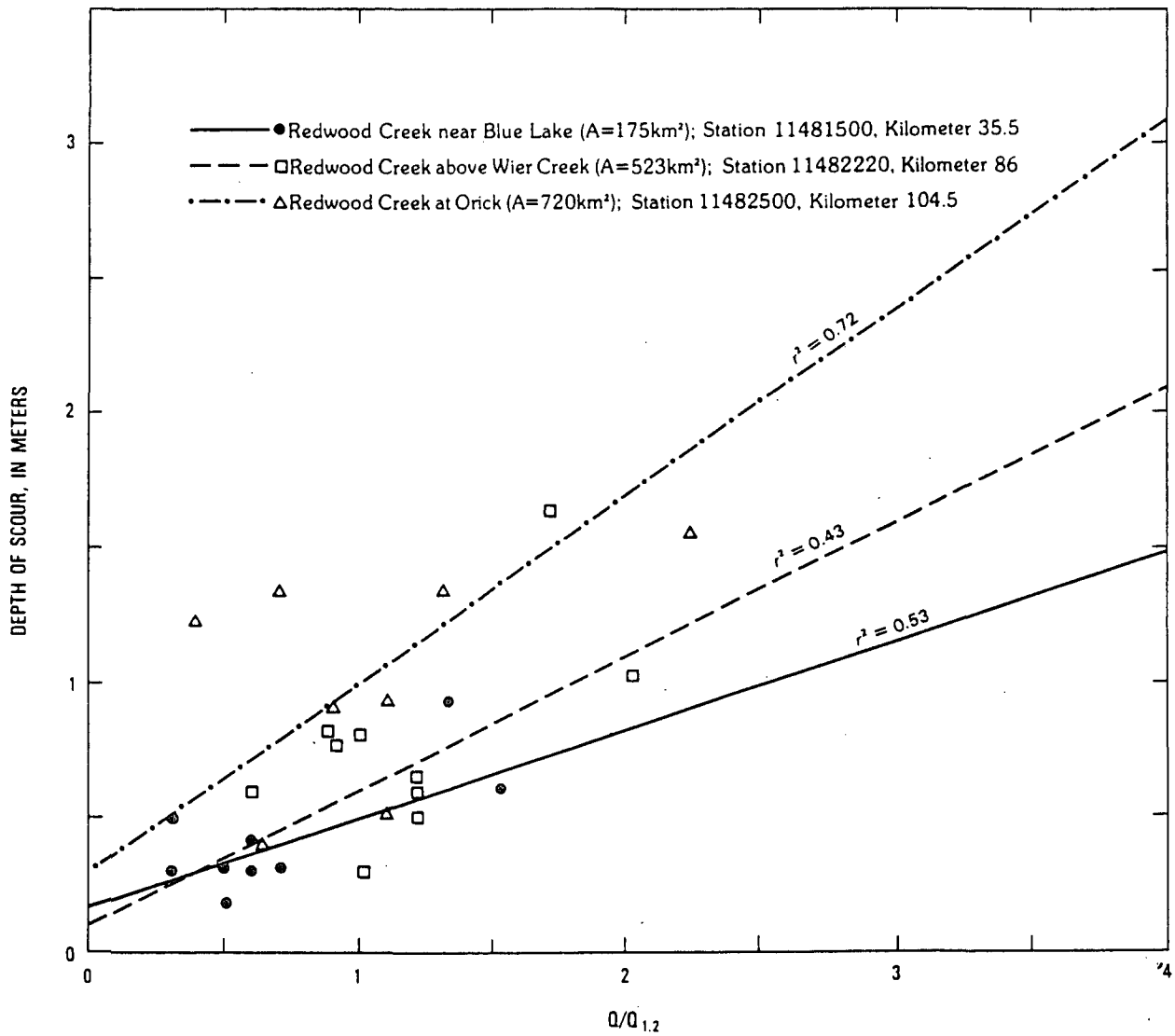


FIGURE 11. — Plot of maximum depths of scour vs. dimensionless discharge index, $Q/Q_{1.2}$ for three gaging stations in Redwood Creek. Data include measurements from 1972 to 1983. Best fit regression lines ($\text{lc } \alpha = 0.05$) shown for the three stations. $Q/Q_{1.2} = A$ dimensionless index where $Q_{1.2}$ is the discharge with a 1.2-year recurrence interval for that station. r^2 = coefficient of linear correlation.

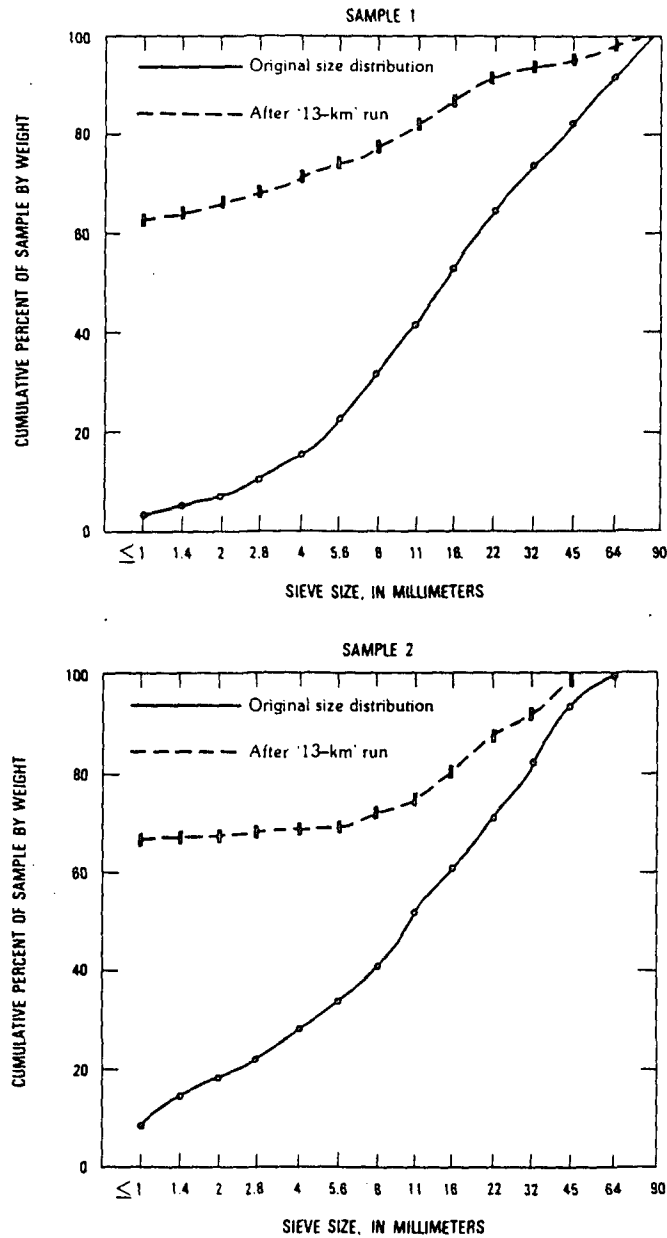


FIGURE 12.—Cumulative particle-size distribution curves for samples used in attrition experiment. Note that in both cases nearly two-thirds of the material broke down to the less-than-2-mm fraction after 13 “tumble kilometers.” The tumbling experiment involved a Los Angeles Rattla Machine, which was used to determine attrition rates on dry sediment sample.

The percentage of weight loss or attrition by size class, during the experiment, varied with lithology. At the end of the run the percentage of schist material equal to or greater than 8 mm in diameter was reduced 83 to 85 percent, whereas the sandstone percentage was only reduced 46 to 52 percent. Although these specific attrition rates are not directly equivalent to those occurring in Redwood Creek, they do indicate that attrition is an important process in this basin and that schist breaks down more readily than sandstone. Results of this experiment are similar to those found by other investigators. Cameron and Blatt (1971) showed that sand-sized fragments of schist were mechanically destroyed by less than 25 km of transport in a stream in the Black Hills of South Dakota. By use of rocks from New Zealand in a tumbler experiment, Adams (1978) also found that schist pebbles broke down much more readily than sandstone pebbles.

Schist is a fairly common bed material in the lower 20 km of Redwood Creek (chap. N, this volume) but, as described above, it breaks down quickly. Thus, there must be a high replacement of schist particles from tributaries in this lower reach. Because schist breaks down easily it probably provides a large fraction of the particles less than 8 mm in diameter and contributes greatly to the suspended load.

A high attrition rate for Redwood Creek bed material implies that much of the sediment presently in channel storage will be broken down to suspended sediment size during future transport. In addition, as Dietrich and Dunne (1978) have argued, the long residence times of inactive and stable sediment allows the weathering and breakdown of stored sediment in place. Thus, estimates of residence times of deposits based on bedload transport rates alone will overestimate the persistence of those storage compartments. Some sediment stored in the Redwood Creek bed in the upper basin, especially schist particles, will be transported as suspended sediment by the time it reaches the mouth of Redwood Creek.

DISTRIBUTION AND QUANTITY OF CHANNEL-STORED SEDIMENT

Sediment is stored in the Redwood Creek channel in several types of storage features that differ from place to place along the channel. Stability and persistence of storage features also differ, according to their size and location in the channel. Figure 13 shows the relative amount of sediment in each storage feature. It is interesting to note that 23 percent of the total sediment is stored in features that were not present in Redwood Creek before 1947 (flood-deposited gravel berms and aggraded channel bed). A single storage feature may consist of several different sediment reservoirs. For

example, a point bar (storage feature) may have active, semiactive, and inactive sediment (sediment reservoirs) stored within it (fig. 5B).

Some kinds of storage features are found only in particular reaches of Redwood Creek (fig. 14). For example, terrace-like gravel berms deposited by the 1964 flood (fig. 2) are found predominantly in the upper reach and berms deposited during the floods 1972 and 1975 are found in the middle reach. They are similar to those described by Scott and Gravlee (1968) in the Rubicon River. The berms are poorly sorted, ranging from sand-sized particles to boulders 0.3 m in diameter. In some berms the gravel is very angular, indicating little fluvial transport before deposition. Also, some landslides that occurred during the 1964 flood (as documented in aerial photographs) have unmodified berm deposits at their toes. This indicates that, at least locally, major landslides occurred prior to the deposition of the berms, and no slide activity has occurred since.

Strath terraces as much as 60 m in height are common between kilometer 12 and kilometer 50 (fig. 14). The lower terraces in this reach have fresh deposits of sand and gravel from recent floods. Extensive alluvial terraces are located in the downstream third of the channel and are important in supporting stands of old-growth redwoods.

Although organic debris is important in storing channel sediment in Redwood Creek tributaries (chap. K, this volume), debris jams store less than 1 percent of the total stored sediment in the main stem of Redwood Creek. Jams that span the channel width, and thus form effective sediment traps, only occur where the drainage area is less than 65 km². Keller and Swanson (1979) also found that debris concentrations generally decrease in number downstream. Cut logs are a major component of debris jams, so jams may have been even less numerous under natural conditions.

Even though woody debris do not directly trap much sediment in Redwood Creek, such debris do influence channel and flood-plain deposits. Large logs that lie parallel to the streambanks often act as bank protection and hinder bank erosion. Small log jams on bars form an environment locally protected from high flows, and vegetation often becomes established around these jams sooner than elsewhere on the bars. Jams thus give some stability to bars through the establishment of vegetation. Swanson and Lienkaemper (1982) found this to be true on the Hoh River in Washington as well. Alternately, jams can divert or deflect flow, which promotes local bank instability and scour of bed material.

A total volume of 16×10^6 m³ of sediment is stored in the main Redwood Creek valley and, as mentioned earlier, an additional 23×10^6 m³ is stored in the flood plain at Orick. In tributaries, however, 95 percent of

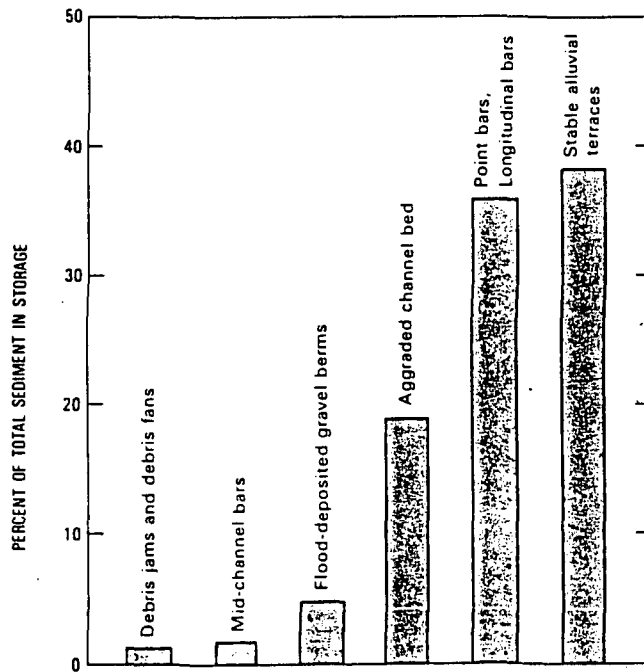


FIGURE 13.—Distribution of stored sediment in various features in Redwood Creek as of 1980.

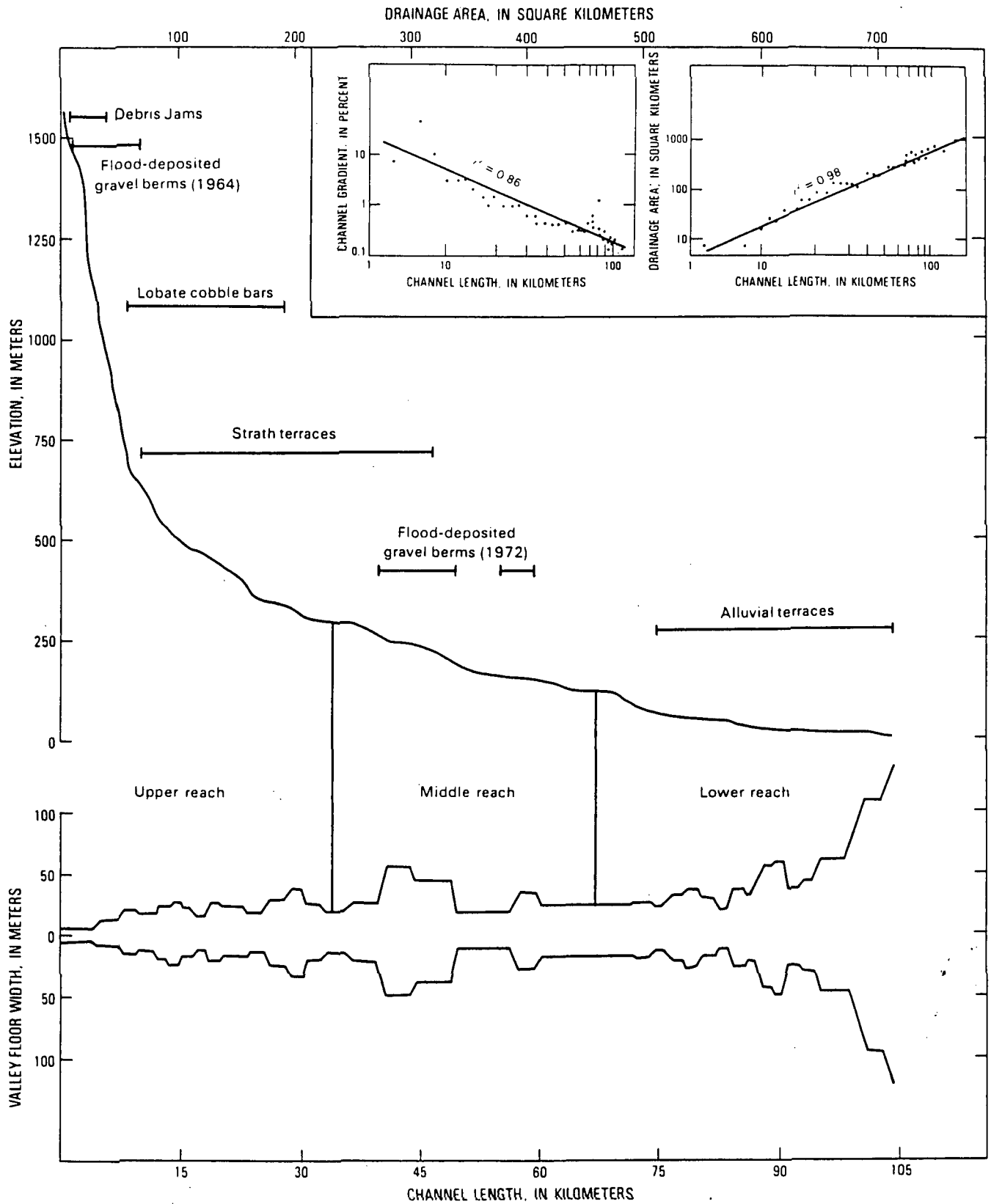


FIGURE 14. -- Longitudinal profile of Redwood Creek showing distribution of localized features along certain reaches of the creek. Valley widths for Redwood Creek are drawn on the channel gradient and, same horizontal scale as the profile. Strong relationships exist between channel length and between drainage area and channel length ($r^2=0.86$ and 0.98 respectively).

total sediment volume is stored in the lower 50 percent of their drainage lengths (chap. K, this volume), whereas alluvial storage in the main channel of Redwood Creek is not quite as concentrated. Ninety-five percent of the total stored sediment in Redwood Creek is located in 65 percent of its drainage length.

The distribution of sediments of different relative mobility changes significantly along the length of the channel (fig. 15). Active sediment makes up a greater percentage of the total stored sediment in the upper 10 km than does any of the other classes. It decreases in relative importance in the mid-basin and increases again downstream from the gorge (kilometer 80). The increase in mobile sediment in downstream reaches does not necessarily indicate that transport rates are higher or that the threshold of movement is lower than in upstream reaches but rather that a higher percentage of sediment is frequently transported. Frequent channel shifting, a braided channel pattern, and large expanses of unvegetated bars attest to the importance of active sediment in these lower reaches.

The percentage of semiactive sediment (fig. 15) generally decreases downstream, as does the percentage for inactive sediment. Inactive sediment increases in relative importance near the mouth of Redwood Creek where large areas of alluvial deposits occur.

Stable alluvial sediment is rare in steep, headwater channels and becomes most important downstream of kilometer 30 (Redwood Valley area). From this point downstream, the percentage of stable sediment in the basin decreases slightly, even though stable sediment remains volumetrically the largest storage feature from kilometer 30 to the mouth. More than a third of all sediment in Redwood Creek is stable, and this stable sediment is a major component of alluvial storage for most of the drainage length.

CONTROLS ON SEDIMENT DISTRIBUTION

Stored sediment is not distributed uniformly along a channel; some reaches store more than others. This study identifies the factors controlling sediment distribution in stream reaches having different physical characteristics. The factors used for comparing volumes of stored sediment per reach were drainage area, sediment input to that reach, channel gradient, boundary shear stress, and valley width (table 4). Because study reaches are not of equal length, sediment storage volumes in different reaches were compared based on the index "cubic meters of sediment per meter of channel" (V_s). All correlations used in the following analysis are significant at the 95-percent confidence level, unless stated otherwise. V_s in the basin ranges from 5 m³/m in the headwa-

ters to 600 m³/m near the mouth (fig. 16). Lower Redwood Creek and Redwood Valley are the highest storage areas in the basin. Storage volume per unit distance generally increases with drainage area (A), but there is much variation (fig. 16). In this case, the data do not fit a simple power function well ($r^2=0.28$), especially at a drainage area of about 475 km² (the gorge). The third degree polynomial $V_s = -3,992 + 227 A - 0.084 A^2 + 0.0009 A^3$ ($r^2=0.58$) describes the data better than a simple power function, but 42 percent of the variation in stored sediment is still left "unexplained" by that approach. Storage volume must be controlled by factors other than drainage area along much of Redwood Creek (table 4).

Large amounts of the sediment stored in Redwood Creek have come from landslides triggered during the 1964 storm. Kelsey and others (chap. J, this volume) describe sediment discharge by landslides into the main stem of Redwood Creek for the periods 1954 to 1966 and 1966 to 1980. In general, most pre-1966 landslides occurred during the 1964 storm. Total landslide input to the mainstem of the Redwood Creek is the sum of mainstem landslides and the estimated input from tributary landslides that reached the main stem. Figure 17 shows the cumulative volumes of total landslide input to the main stem (5.25×10^6 m³; chap. J, table 1, this volume) and the deposition in Redwood Creek (4.74×10^6 m³) resulting from the 1964 flood. Thus, the sediment that remained in the valley was 90 percent of the volume of sediment influx from landslides to the mainstem. Kelsey (1977) showed that in the nearby Van Duzen River drainage area ($A=1,115$ km²) for the same time period, landslide input was 8.54×10^6 m³, and the increase in valley storage was 64 percent of this volume (5.5×10^6 m³). In addition to landslide input, however, fluvial erosion due to hillslope gullying and bank erosion during the 1964 flood was also a major sediment contributor, but the sediment volume from these sources has not yet been quantified for Redwood Creek.

The slopes of the curves in figure 17 indicate that in the upper 15 km of Redwood Creek, landslide input and sediment deposition increased at about the same rate. Between kilometer 15 and kilometer 80, landslide input generally continued to increase sharply, whereas deposition did not, except in Redwood Valley (kilometer 35-65) where much sediment was deposited. From kilometer 80 to the mouth (downstream from the gorge) this trend reversed and deposition increased sharply while landslide input leveled off.

If the three general reaches of Redwood Creek are considered, a pattern of sediment input from landslides and deposition emerges (table 5). The areas with the highest landslide input showed the highest percent increase in storage over previous levels. However, if the actual amount of deposition in individual study reaches is

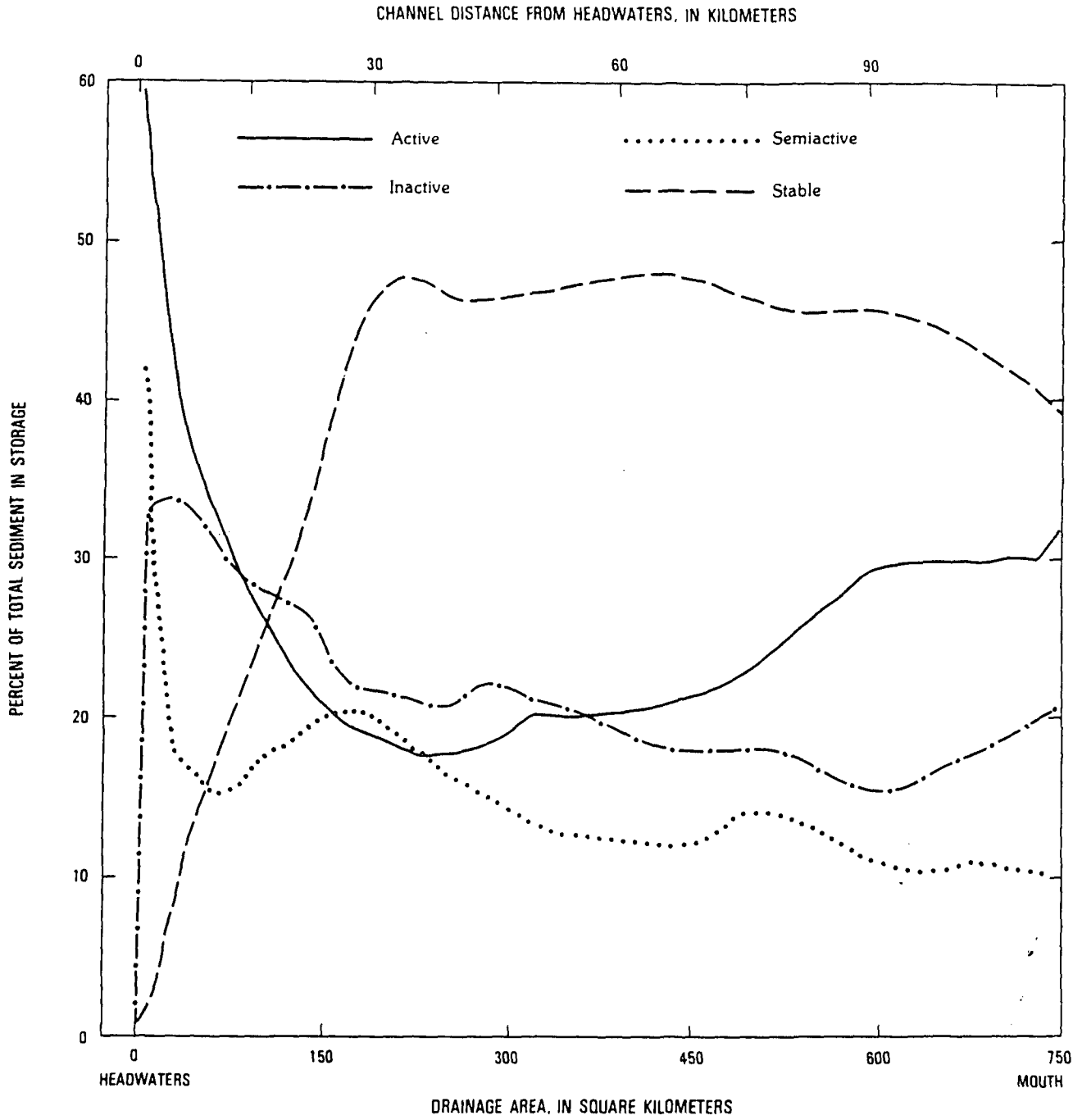


FIGURE 15.—Plot of distribution of sediments of different relative mobility (sediment reservoirs) vs. drainage area, Redwood Creek basin.

TABLE 4.—Data for the 39 study reaches on Redwood Creek
(Study reaches are shown in figure 1)

Study reach	Drainage area (km ²)	Channel length (km)	Stored sediment V _s (1947) (m ³)	Stored sediment V _s (1964) (m ³)	Stored sediment V _s (1980) (m ³)	Valley width (m)	Channel gradient (percent)	Boundary shear stress (dyn/cm ²)	Pre-1966 landslide volumes (m ³)
39.....	11	4.90	2,400	23,500	23,500	15.2	9.10	2,730	0
38.....	14	3.45	6,500	45,300	25,500	17.7	12.20	9,100	93,700
37.....	25	2.20	29,200	319,300	96,000	36.6	4.00	2,635	254,200
36.....	35	1.10	35,200	124,500	54,600	31.4	3.30	2,970	76,300
35.....	37	1.60	24,600	74,300	54,000	30.5	3.00	2,682	198,700
34.....	63	1.40	54,900	205,000	84,300	42.7	1.90	1,724	184,200
33.....	66	2.05	89,500	218,800	157,000	51.2	1.25	1,054	205,300
32.....	86	1.65	110,200	179,000	148,500	39.5	1.20	1,245	136,900
31.....	89	1.80	59,400	98,800	81,200	27.7	1.24	1,341	113,300
30.....	109	1.50	87,100	212,300	148,200	57.0	1.20	910	385,100
29.....	122	3.60	220,100	332,100	300,000	51.2	1.20	1,054	223,100
28.....	145	2.35	139,300	211,100	203,300	36.3	.90	1,293	70,100
27.....	159	3.00	355,100	457,000	407,900	51.2	.80	766	85,300
26.....	169	2.80	212,700	320,500	295,400	76.8	.60	527	277,100
25.....	176	2.35	268,500	325,800	302,300	45.7	.50	575	43,700
24.....	200	3.40	275,400	440,700	381,900	40.5	.50	445	41,800
23.....	216	4.45	398,500	626,300	604,500	48.8	.45	484	72,000
22.....	261	2.85	1,075,300	1,352,700	1,327,900	104.9	.44	460	325,100
21.....	292	5.95	1,303,700	1,670,000	1,577,300	85.3	.38	398	48,300
20.....	314	7.50	253,500	347,445	327,700	33.2	.35	364	31,200
19.....	319	2.80	614,700	682,000	724,600	61.0	.35	733	6,900
18.....	372	6.15	222,700	330,700	326,000	39.6	.30	718	696,000
17.....	410	3.65	22,100	69,400	65,100	42.7	.27	445	235,600
16.....	433	1.80	19,600	70,600	51,200	52.7	.48	656	213,000
15.....	454	1.10	7,000	16,000	10,700	39.6	.40	599	271,000
14.....	458	1.60	27,500	67,200	67,200	57.9	.32	671	42,400
13.....	468	1.75	170,000	185,500	178,600	76.2	.66	1,183	157,100
12.....	475	1.30	63,500	117,600	137,800	54.9	.31	833	56,600
11.....	479	1.65	20,000	20,300	21,000	33.5	1.40	3,760	181,300
10.....	485	1.50	166,500	255,500	286,400	76.2	.30	625	68,400
9.....	520	2.65	100,500	164,600	267,000	62.5	.26	625	162,300
8.....	531	1.80	376,800	475,800	605,000	106.7	.26	390	22,800
7.....	551	2.05	517,800	606,500	739,200	115.8	.23	412	61,700
6.....	562	2.10	142,200	211,700	280,000	65.5	.23	412	52,900
5.....	573	2.55	300,400	389,600	473,100	82.3	.20	390	58,500
4.....	584	2.95	610,000	713,200	829,800	111.3	.17	305	49,300
3.....	593	1.40	308,300	362,400	427,700	111.3	.14	290	25,200
2.....	719	5.70	2,426,900	3,198,700	3,483,200	213.4	.18	430	18,600
1.....	729	3.60	125,200	448,600	551,300	140.2	.12	290	0

compared with landslide input to that reach (fig. 18), there is no discernible relationship. This suggests that channel and valley characteristics in a reach, rather than sediment input at a point, control where deposition occurs.

An important reach characteristic related to the storage and transport of sediment is channel gradient. Other studies (chap. K, this volume) have shown that deposition is generally confined to low-gradient reaches. In Redwood Creek, the amount of channel-stored sediment per unit channel length (V_s) in 1980 increased with decreasing channel gradient (S) (fig. 19). Channel gradient decreases with an increase in drainage area ($S=87A^{-0.9}$; $r^2=0.89$). Nevertheless, a comparison of figure 16 and figure 19 shows that in Redwood Creek, V_s correlates better with channel gradient than with drainage area ($r^2=0.42$ and 0.28 , respectively). Channel gradient, in turn, is controlled to a certain extent by bedrock geology and sediment input. For example, where earthflows have delivered huge boulders to Redwood Creek

that cannot be transported by present flows, the channel gradient is steeper than in adjacent reaches (reaches 11 and 38).

Deposition may also be related to the amount of tractive force available to move sediment on the streambed. In river channels, the average total tractive force per unit area on the stream boundary (τ_b) is approximately equal to the downslope component of the weight of water, or γds , where γ is the specific weight of water, d is depth of flow, and s is water surface slope. This

TABLE 5.—Comparison of landslide input and changes in channel-stored sediment due to the 1964 flood in the upper, middle, and lower reaches of Redwood Creek

Reach	Reach length (km)	Landslide input ¹ 1964-66 (m ³ /km of channel)	Increase in stored sediment in 1964 (m ³ /km of channel)	Increase in stored sediment 1947-64 (percent)
Upper ...	35.5	66,000	41,000	190
Middle...	33.5	37,000	39,000	120
Lower...	35.6	47,000	56,000	130

¹ From Kelsey and others (chap. J, Fig. 9 this volume).

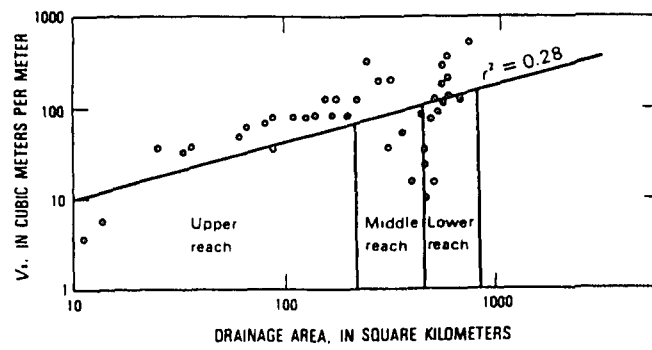


FIGURE 16.—Logarithmic plot of volume of stored sediment per unit distance (V_s) vs. drainage area.

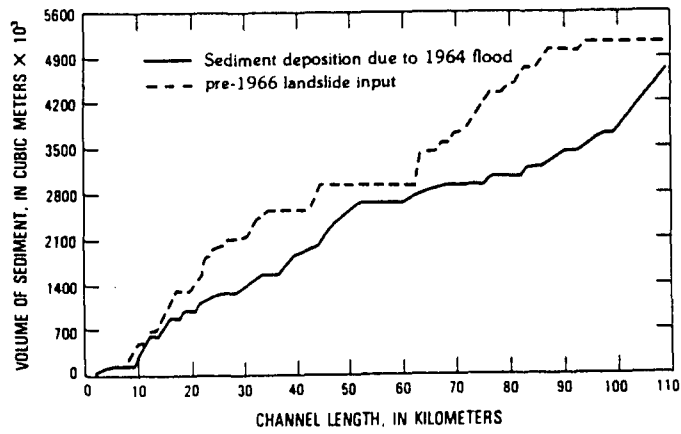


FIGURE 17. —Cumulative volumes of total landslide input to the main stem of Redwood Creek and the deposition in Redwood Creek resulting from the December 1964 flood. Landslide data are from Kelsey and others (chap. J, table 1, this volume).

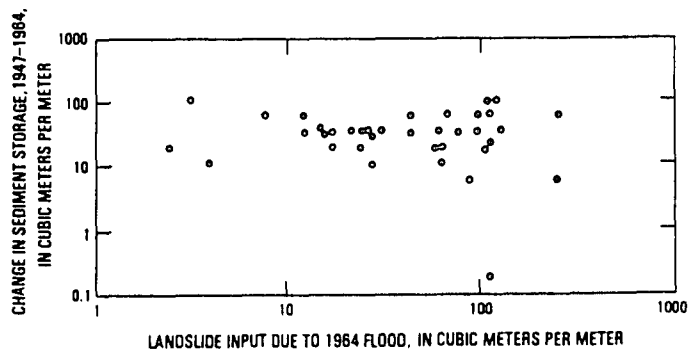


FIGURE 18. — Logarithmic plot of changes in stored sediment in Redwood Creek (due to the 1964 flood) vs. input due to the same flood. No line was drawn because the regression analysis showed no relationship ($r^2=0.02$).

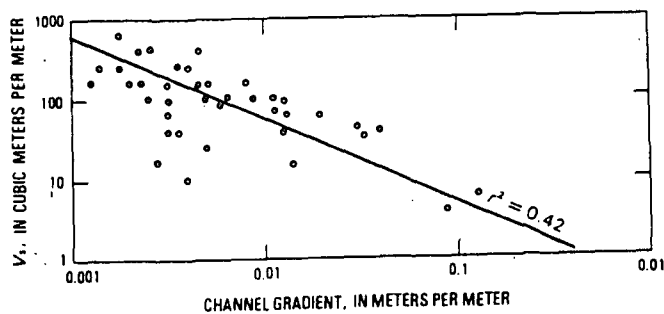


FIGURE 19.—Logarithmic plot of volume of stored sediment per unit channel length (V_s) vs. channel gradient.

assumes that water surface slope is close to bed gradient S on the average over long reaches. Resistance to flow is generated by bank curvature and irregularities, bed topographic features such as bars, and by stationary and moving sediment. If it is assumed that stationary roughness or resistance features of the channel changed little along Redwood Creek, then as τ_b decreases, less tractive force is available to move sediment, and deposition would tend to occur.

For reaches in Redwood Creek, τ_b was defined for bankfull discharge as determined from 1980 channel surveys. The relationship of V_s to τ_b is described by $V_s = 4.5 \times 10^6 \tau_b^{-0.94}$, for which $r^2 = 0.44$ (fig. 20). The fact that the relation is not stronger may be because much of the deposition of V_s occurred during different hydraulic geometry and flow conditions (and thus different τ_b conditions) than were present in 1980. Few data are available for determining accurate values of τ_b during the 1964 flood. Also, the assumption that resistance changes little along Redwood Creek may not be valid.

Of the parameters tried, V_s correlates best ($r^2 = 0.72$) with valley width (fig. 21). Valley width was defined as the average width in a study reach that was inundated by the 1964 flood, and valley widths are shown schematically in figure 14. V_s is highest in areas of large valley widths. In the Redwood Creek basin, geologic structure and bedrock influence valley width. Climate, tectonics, and general landscape evolution may affect width, but in terms of recent changes in Redwood Creek, valley width can be assumed constant through time. If V_s is related to valley width, then it follows that relatively recent deposits (active, semiactive, and inactive sediment) should occur in the same reaches that ancient deposition (stable sediment) occurred. This is indeed the case, as is shown in figure 22.

Thus sediment deposition in a reach is most strongly controlled by valley width. Generally, deposition in Redwood Creek due to the 1964 flood occurred downstream from areas of high sediment input; and specifically, deposition occurred in areas of large valley width and gentle stream gradient. If a large influx of sediment occurs in the future, sites of deposition could probably be predicted by considering sites of past deposition—that is, reaches with large valley widths and gentle stream gradients.

RESIDENCE TIMES OF STORED SEDIMENT

A critical part of describing sediment storage in channels is defining the residence time, or persistence, of the stored sediment. To do this, the volume of sediment in various reservoirs must be known as well as the rate of sediment transport through the system. Residence times for sediment in Redwood Creek were estimated for the

four types of sediment reservoirs (active, semiactive, inactive, and stable) by dividing the volume of sediment per meter of channel length (V_s) by the bedload discharge rate (Q_B). Following the approach of Dietrich and Dunne (1978), the volumes of sediment and bedload discharge were defined as power functions of drainage area A : $V_s = aA^m$ and $Q_b = bA^n$ (table 6). Drainage area is defined as a function of channel length (X): $A = cX^p$. Then the residence time per meter of channel length is:

$$\frac{dt}{\delta X} = \frac{aA^m}{bA^n} = \frac{a(cX^p)^m}{b(cX^p)^n} = \frac{a^{(m-n)}c^{(m-n)p}}{b} \quad (2)$$

A more complete discussion of this equation is given by Dietrich and Dunne (1978). Dietrich and others (1982) have subsequently shown that this estimation of residence time is not dependent on the actual process of sediment transport through a given reservoir. A modified approach to this model is presented by Kelsey and others (1987).

The relations among drainage area, channel length, and volume of sediment were defined on the basis of values measured in the field (described in previous sections) and from topographic maps. The power function for channel length and drainage area has an excellent fit ($r^2 = 0.98$) (fig. 14). The relationship for bedload discharge (fig. 23) used in table 6 is based on bedload measurements made for 8 to 10 years at three gaging stations on Redwood Creek and for three years on 3 tributaries draining three types of terrain typical of the

Gaging station	Drainage area (km ²)	Bedload as percent of total load	Bedload transport rate in Mg/yr
Mainstem			
Blue Lake.....	175	20	93,500
South Park Boundary....	474	16	193,000
Orick.....	720	11	173,000
Tributaries			
Lacks Creek.....	44	35	11,000
Coyote Creek.....	20	23	15,000
Panther Creek.....	16	19	2,100

Redwood Creek basin; however, because the bedload data are based on different lengths of record, the relation may need to be modified slightly as more hydrologic data become available.

Four separate power functions were computed to define the relations of the four types of sediment reservoirs to drainage area. As discussed previously, several factors contribute to considerable variance in the downstream increase of sediment in storage. In order to use a simple power function relation between sediment in storage and channel length, anomalously low values for reaches near kilometer 80 (the gorge) were omitted, and a least-squares regression through the remaining data was computed. The four power functions used for the four sediment reservoirs are listed in table 6. For active

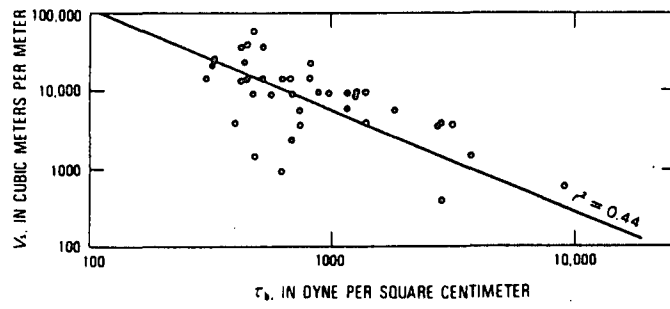


FIGURE 20. — Logarithmic plot of volume of stored sediment per unit distance (V_s) vs. the boundary shear stress (τ_b), calculated for Redwood Creek at bankfull discharge.

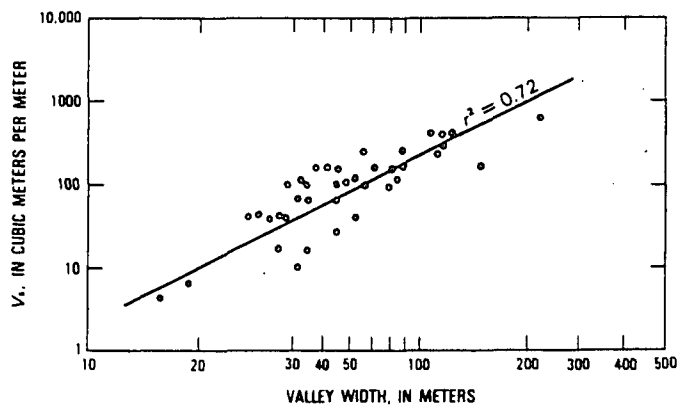


FIGURE 21.—Logarithmic plot of volume of stored sediment per unit channel length (V_s) vs. valley width in a study reach.

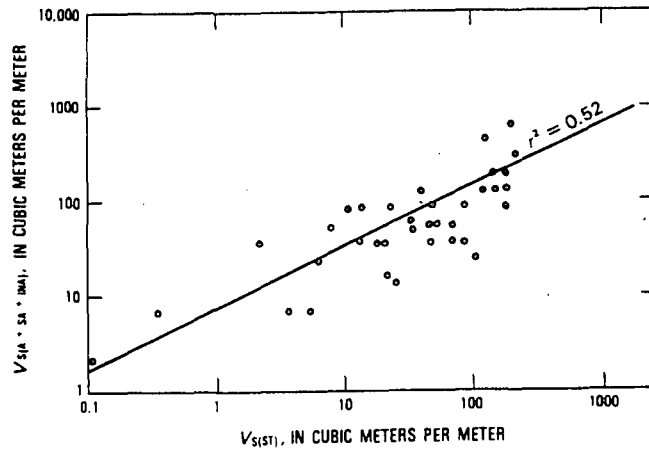


FIGURE 22.—Logarithmic plot of volume of active (A), semiactive (Sa), and inactive (Ia) sediment per unit channel length (V_s) vs. volume of stable(s) stored sediment per unit channel length for study reaches in Redwood Creek.

TABLE 6.—*Definition of power functions for the four types of sediment reservoirs in Redwood Creek*
 [Sediment reservoirs: A, active; SA, semiactive; IA, inactive; S, stable]

Reservoir	Relation	a	b	c	m	n	p	r ²
Entire channel	$Q_B = bA^n$ $A = cX^p$		272			1.04		0.88
Active (A) sediment	$V = aA^m$	0.64		1.28×10^{-4}	0.70		1.34	.49
A+SA sediment	$V = aA^m$	1.29			.65			.47
A+SA+IA sediment	$V = aA^m$.79			1.05			.45
A+SA+IA+S sediment	$V = aA^m$.04			2.20			.45

sediment this relations is $V_s = 0.64A^{0.70}$, for which $r^2 = 0.49$. When sediment in the active reservoir is mobilized, it moves down the channel through the active reservoir, and residence time is V_s/Q_B , as stated earlier. However, when sediment in the semiactive reservoir is mobilized, sediment moves into the active reservoir. Because the sediment moves down the channel through both semiactive and active reservoirs, the residence time is $[V_s(\text{active}) + V_s(\text{semiactive})]/Q_B$. When sediment in the stable reservoir is mobilized, sediment is transported through all four reservoirs. In defining the "stable" power function the stable sediment near the mouth that is now protected by flood levees was included because this sediment is 79 percent of the total amount of stable sediment in the basin. Integrating equation 2 between two points (x_1 and x_2) in a reservoir gives the residence time ($t_2 - t_1$) through that section of the reservoir (Dietrich and Dunne, 1978):

$$\int_{t_1}^{t_2} dt = \int_{x_1}^{x_2} \frac{a}{b} c^{(m-n)} x^{(m-n)p} dx \quad (3)$$

$$t_2 - t_1 = \frac{\frac{a}{b} c^{(m-n)}}{1 + (m-n)p} x^{(1+(m-n)p)} \Big|_{x_1}^{x_2} \quad (4)$$

Using this approach, residence times for active, semiactive, inactive, and stable sediment in the upper, middle, and lower reaches of Redwood Creek were computed (table 7). The three main channel reaches are approximately equal in length (35.5, 33.3, and 35.6 km, respectively). Velocity of sediment is simply defined as the length of the main channel reach in question divided by the residence time of a sediment reservoir in that reach (table 7). As expected, sediment in the active reservoir has the shortest residence time. For example, a particle entering the active channel bed at kilometer 35.5 (the upstream end of the middle reach) would take 11 years under average transport conditions to travel out of the middle reach. This residence time is of the same order of magnitude as estimated for gravel bars on Rock Creek by Dietrich and Dunne (1978). Residence time for active sediment decreases downstream, and particle velocity increases. This seems reasonable because widespread

channel aggradation in the lower reach has caused channel adjustments (channel widening, decrease of depth) (chap. N, this volume) that would tend to increase sediment transport there. A velocity on the order of 3,000 to 4,000 m/yr, as predicted for active sediment in the middle and lower reaches, is much higher than the 234 m/yr reported by Milhous (1973) for Oak Creek and much higher than the estimated velocities in Rock Creek (Dietrich and Dunne, 1978), both of which are small streams transporting considerably less bedload than Redwood Creek. This rate is also supported independently by an analysis of changes detected through cross-section surveys.

Residence times for semiactive sediment, as with active sediment, decrease downstream. Semiactive sediment moves more slowly than active sediment in the upper reach, but the difference is negligible in the downstream reach. The velocities of both active and semiactive sediment are within the same order of magnitude. Scour and fill data indicate frequent erosion of semiactive sediment in the downstream reach. Because most sediment transport in north coast streams occurs at relatively high discharges (Ritter, 1968), at which both active and semiactive sediment are mobilized, the similarity in residence times is not unexpected.

The residence time for inactive sediment is an order of magnitude longer than for active or semiactive sediment. Residence times are approximately constant throughout the length of the channel. In the upper reach, sediment in the inactive reservoir consists of high, flood-deposited gravel berms in a narrow valley. Downstream, flood deposits are found on a wider flood plain removed from the inactive reservoir. This situation indicates that some effects of a large depositional event such as the 1964 flood will persist on the order of a century.

Stable sediment has the longest residence time—an order of magnitude greater than for inactive sediment. Residence times increase downstream, where a wide valley permits the formation and preservation of broad alluvial terraces. Old-growth redwood trees on these terraces are 400 to 800 years old, and some of them may have sprouted from even older trees. The long residence times of inactive and stable sediment probably allows the

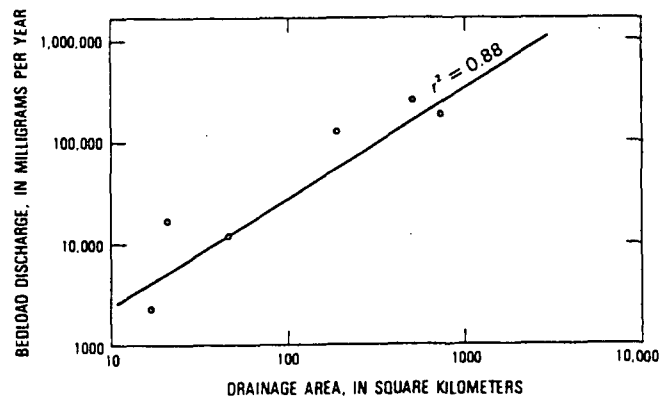


FIGURE 23.—Logarithmic plot of annual bedload discharge vs. drainage area computed for six gaging stations on Redwood Creek.

TABLE 7.—Residence times of sediment in storage reservoirs in the three main reaches of Redwood Creek

[Approximate boundaries of reaches are shown in figure 1]

Reach	Equation for residence time	Number of Years	Velocity (m/yr)
Active			
Upper	0.09 [$X_2^{0.64} - X_1^{0.64}$]	26	1,365
Middle		11	3,030
Lower		9	3,950
Semiactive			
Upper	0.33 [$X_2^{0.48} - X_1^{0.48}$]	50	710
Middle		19	1,750
Lower		15	2,370
Inactive			
Upper	$2.63 \times 10^{-3} [X_2^{1.01} - X_1^{1.01}]$	104	340
Middle		99	335
Lower		106	335
Stable			
Upper	$1.76 \times 10^{-9} [X_2^{2.65} - X_1^{2.65}]$	700	50
Middle		3,100	10
Lower		7,200	5

weathering and breakdown of coarse stored sediment to suspended load size, as Dietrich and Dunne (1978) have argued.

The bedload discharge function is based on total-load measurements made during the last 10 years. This period includes the flood of 1975, which had a recurrence interval of approximately 10 to 20 years. The transport relationship defined in table 6 is probably accurate for discharges up to the 20-year peak flow. The above discussion of residence times, however, assumes that the volume of sediment in each reservoir and the bedload transport rates remain constant through time. Because Redwood Creek is not in a state of equilibrium, the bedload transport function may shift in the future. If a flood of an extreme magnitude occurred, the bedload function and residence times might need to be recalculated.

IMPLICATIONS FOR CHANNEL RECOVERY FROM MAJOR STORMS

The effectiveness of an event is measured not only in terms of sediment transport but also by net erosion and changes in channel form (Wolman and Gerson, 1978). If the recovery time of a system is greater than the recurrence interval of the event, the channel will not be in equilibrium with the present channel-forming discharge. Wolman and Gerson cited examples of rivers in temperate regions which regained their original width in a matter of months or years after the occurrence of channel-widening floods that had a recurrence interval of 50 to 200 years. In Redwood Creek, however, it appears that changes in sediment storage (and related changes in channel geometry) due to a flood having a recurrence interval of 50 years will persist for a century or more. In

this case, recovery time is longer than the recurrence interval of the 1964 flood. The recurrence interval of the 1964 episode of hillslope erosion is unknown; nevertheless, it is probably greater than that of the 1964 peak flow discharge. Beven (1981) discussed the effects of sequencing on effectiveness of events, which may indeed be important in Redwood Creek.

In some basins recovery is lacking because a threshold of competence has not been exceeded (Wolman and Gerson, 1978). In Redwood Creek, however, particle sizes of stored sediment can be transported at 5- to 20-year peak discharges if they are located near the thalweg. Nonrecovery in Redwood Creek results from the inability of moderate flows to erode the vast amounts of "excess" sediment deposited throughout the valley width.

CONCLUSION

As a result of the December 1964 flood in Redwood Creek, the distribution and quantity of sediment stored in the main channel changed drastically. New storage features (flat-topped gravel berms and an aggraded channel bed) were created. This stored sediment was responsible for exceptionally high bedload transport rates after the 1964 flood. Sediment input to a reach is related in a general way to increases in stored sediment, but characteristics of a specific reach control the local distribution of stored sediment. The volume of stored sediment is greatest in reaches having large valley widths and gentle channel gradients. The net amount of sediment stored in Redwood Creek in 1964 had decreased by 1980. Much of the active sediment originally stored in the upper basin had been transported and redeposited in lower reaches. Unless sediment input to Redwood Creek from hillslope processes increases in the future, the volume of stored sediment will slowly decrease through time. The residence time of deposits differs according to storage reservoirs. Residence times of sediment in active and semiactive reservoirs are on the order of a few decades; of sediment in inactive reservoirs, a hundred years. The residence time for sediment in stable reservoirs is thousands of years. These data indicate that recovery of the entire system from a major aggradational event is extremely slow. In-channel storage provides a ready supply of bedload-sized material for future transport at high flows. High bedload transport rates will probably continue for several decades due to the residence time of sediment deposits.

REFERENCES CITED

- Adams, J., 1978. Data for New Zealand pebble abrasion studies: New Zealand Journal of Science, v. 21, p. 607-610.

- Anderson, H.W., 1976, Normalized suspended sediment discharge related to watershed attributes and landslide potential (abs.): American Geophysical Union Transactions, v. 57, p. 919.
- Best, D., 1984, *Land use in the Redwood Creek watershed, California: Redwood National Park Technical Report 9*, Arcata, California.
- Beven, K., 1981, The effects of ordering on the geomorphic effectiveness of hydrologic events, in *Erosion and Sediment Transport in Pacific Rim Steeplands: IAHS Publication No. 132*, Christchurch, p. 510-526.
- Cameron, K.L., and H. Blatt, 1971, Durabilities of sand size schist and "volcanic" rock fragments during fluvial transport, Elk Creek, Black Hills, South Dakota: *Journal of Sedimentary Petrology*, v. 41, No. 2, p. 565-576.
- Coghlan, T.M., 1984, A climatologically-based analysis of the storm and flood history of Redwood Creek: *Redwood National Park Technical Report 10*, Arcata, California, 47 p.
- Dietrich, W.E., and Dunne, T., 1978, Sediment budget for a small catchment in mountainous terrain: *Zeitschrift für Geomorphologie, Supplemental Band 29*, p. 191-206.
- Dietrich, W.E., Dunne, T., Humphrey, N.F., and Reid, L.M., 1982, Construction of sediment budgets for drainage basins: U.S. Forest Service General Technical Report PNW-141, p. 5-23.
- Harden, D.R., Janda, R.J., and Nolan, K.M., 1978, Mass movement and storms in the drainage basin of Redwood Creek, Humboldt County, California—a progress report: U.S. Geological Survey Open-File Report 78-486, 161p.
- Helley, E.J., and LaMarche, V.C., Jr., 1973, Historic flood information for northern California streams from geological and botanical evidence: U.S. Geological Survey Professional Paper 485-E, 16 p.
- Hickey, J.J., 1969, Variations in low water streambed elevations at selected gaging stations in northwestern California: U.S. Geological Survey Water Supply Paper 1879-E, 33 p.
- Iwatsubo, R.T., Nolan, K.M., Harden, D.R., Glysson, G.D., and Janda, R.J., 1975, *Redwood National Park Studies, Data Release No. 1*, Redwood Creek, Humboldt County, California, September 1, 1973–April 10, 1974: U.S. Geological Survey Open-File Report, 120 p.
- Janda, R.J., 1978, Summary of watershed conditions in the vicinity of Redwood National Park, California: U.S. Geological Survey Open-File Report 78-25, 80 p.
- Janda, R.J., Nolan, K.M., Harden, D.R., and Colman, S.M., 1975, Watershed conditions in the drainage basin of Redwood Creek, Humboldt County, California, as of 1973: U.S. Geological Survey Open-File Report 75-568, 266 p.
- Keller, E.A., and Swanson, F.J., 1979, Effects of large organic material on channel form and fluvial processes: *Earth Surface Processes*, v. 4, p. 361-380.
- Kelsey, H.M., 1977, Landsliding, channel changes, sediment yield and land use in the Van Duzen River basin, North Coastal California, 1941-1975: Ph.D. thesis, University of California, Santa Cruz, 370 p.
- Kelsey, H.M., Madej, M.A., Pitlick, J., Coghlan, T.M., Best, D., Belding, R., and Stroud, P., 1981, Sediment sources and sediment transport in the Redwood Creek basin: a progress report: *Redwood National Park Technical Report 3*, Arcata, California, 114 p.
- Kelsey, H.M., Lamberson, R., and Madej, M.A., 1987, Stochastic model for the long-term transport of stored sediment in a river channel: *Water Resources Research*, v. 23, no. 9, p. 1738-1750.
- Knott, J.M., 1974, Sediment discharge in the Trinity River basin, California: U.S. Geological Water Resources Investigations, 49-73, 56 p.
- Lehre, A., 1981, Sediment mobilization and production from a small Coast Range catchment: Lone Tree Creek, Marin Co., California: Ph.D. thesis, University of California, Berkeley, 370 p.
- Leopold, L.B., Wolman, M.G., and Miller, J.P., 1964, *Fluvial processes in geomorphology*: San Francisco, W.H. Freeman and Company, 522 p.
- Lisle, T.E., 1982, Effects of aggradation and degradation on riffle-pool morphology in natural gravel channels, northwestern California: *Water Resources Research*, v. 18, no. 6, p. 1643-1651.
- Madej, M.A., 1982, Sediment transport and channel changes in an aggrading stream in the Puget Lowland, Washington: U.S. Department of Agriculture General Technical Report PNW-141, p. 97-108.
- Milestone, J.F., 1978, Management alternatives for the protection of alluvial flats bordering large rivers: Redwood National Park in-house report, unpublished, Arcata, California.
- Milhous, R.T., 1973, Sediment transport in a gravel-bottomed stream: Ph.D. thesis, Oregon State University, 232 p.
- Reid, L.M., 1981, Sediment production from gravel-surfaced forest roads, Clearwater basin, Washington: Fisheries Research Unit FRI-UW-8108, University of Washington, Seattle, Washington, 247 p.
- Ritter, J.R., 1968, Changes in the channel morphology of Trinity River and eight tributaries, California, 1961-65: U.S. Geological Survey Open-File Report, 60 p.
- Scott, K.M., and Gravlee, G.C., 1968, Flood surge on the Rubicon River, California—Hydrology, hydraulics and boulder transport: U.S. Geological Survey Professional Paper 422-M, 38 p.
- Stewart, J.H., and LaMarche, V.C., 1967, Erosion and deposition provided by the flood of December 1964 on Coffee Creek, Trinity County, California: U.S. Geological Survey Professional Paper 422-K, 22 p.
- Swanson, F.J., Fredrickson, R.L., and McCorison, F.M., 1982, Material transfer in a western Oregon forested watershed, in Edmunds, R.L., ed., *The natural behavior and response to stress of Western coniferous forests*: Stroudsburg, Pa., Dowden, Hutchinson, and Ross, Inc., p. 233-266.
- Swanson, F.J., Janda, R.J., Dunne, T., and Swanston, D.N., 1982, Sediment budgets and routing in forested drainage basins: U.S. Department of Agriculture General Technical Report PNW-141, 165 p.
- Swanson, F.J., and Lienkaemper, G.W., 1982, Interactions among fluvial processes, forest vegetation and aquatic ecosystems, South Fork Hoh River, Olympic National Park, in *Ecological Research in National Parks of the Pacific Northwest*: Oregon State University, Corvallis, p. 30-34.
- Trimble, S.W., 1981, Changes in sediment storage in the Coon Creek basin, driftless area, Wisconsin, 1953-1975: *Science*, v. 214, p. 181-183.
- Young, L.E., and Cruff, R.W., 1967, Magnitude and frequency of floods in the United States, Part II—Pacific Slope basins in California, v. 1—Coastal basins south of the Klamath River basin and Central Valley drainage from the west: U.S. Geological Survey Water Supply Paper 1685, 272 p.
- Wolman, M.G., and Gerson, R., 1978, Relative scales of time and effectiveness of climate in watershed geomorphology: *Earth Surface Processes*, V. 3 p. 189-208.