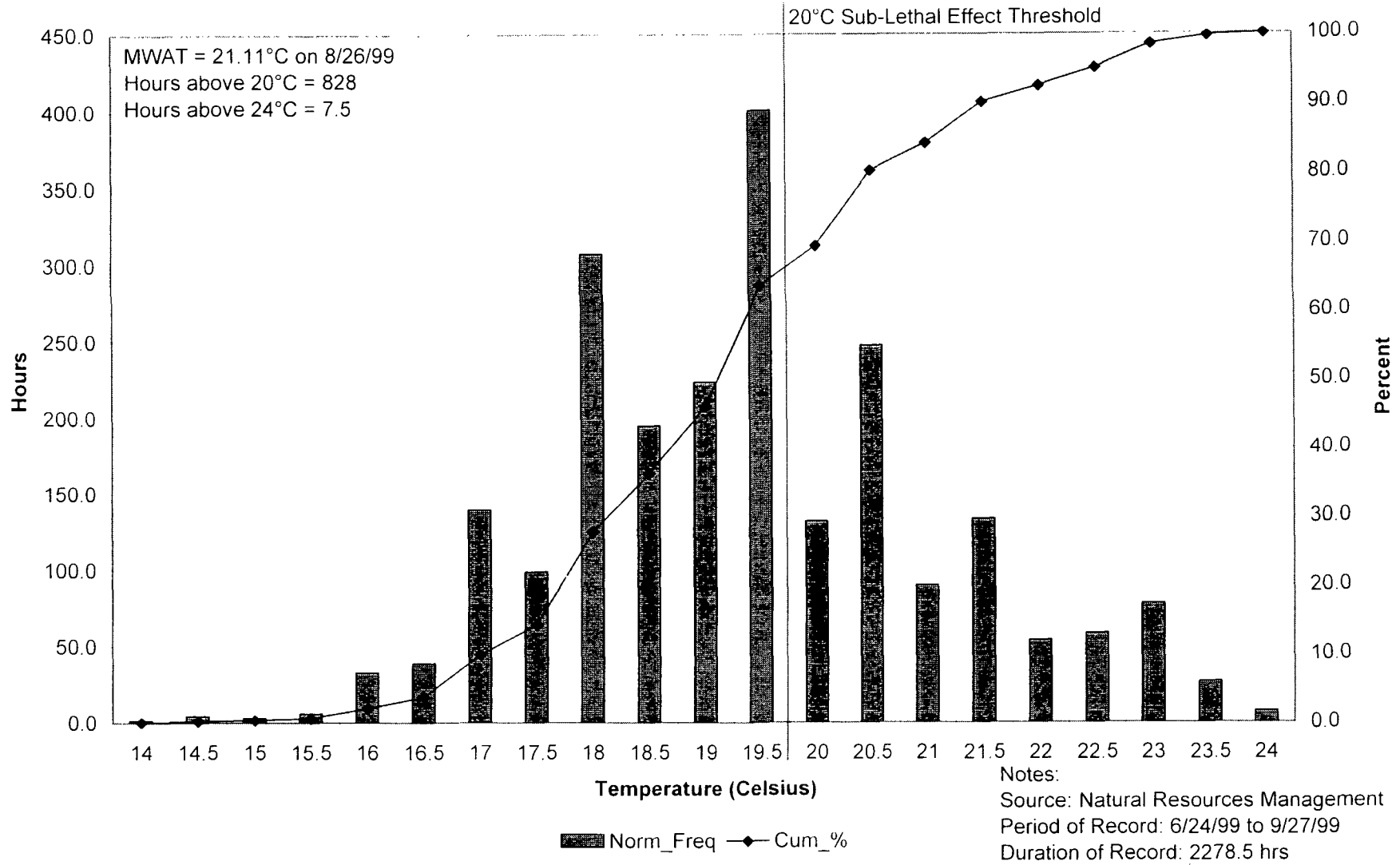
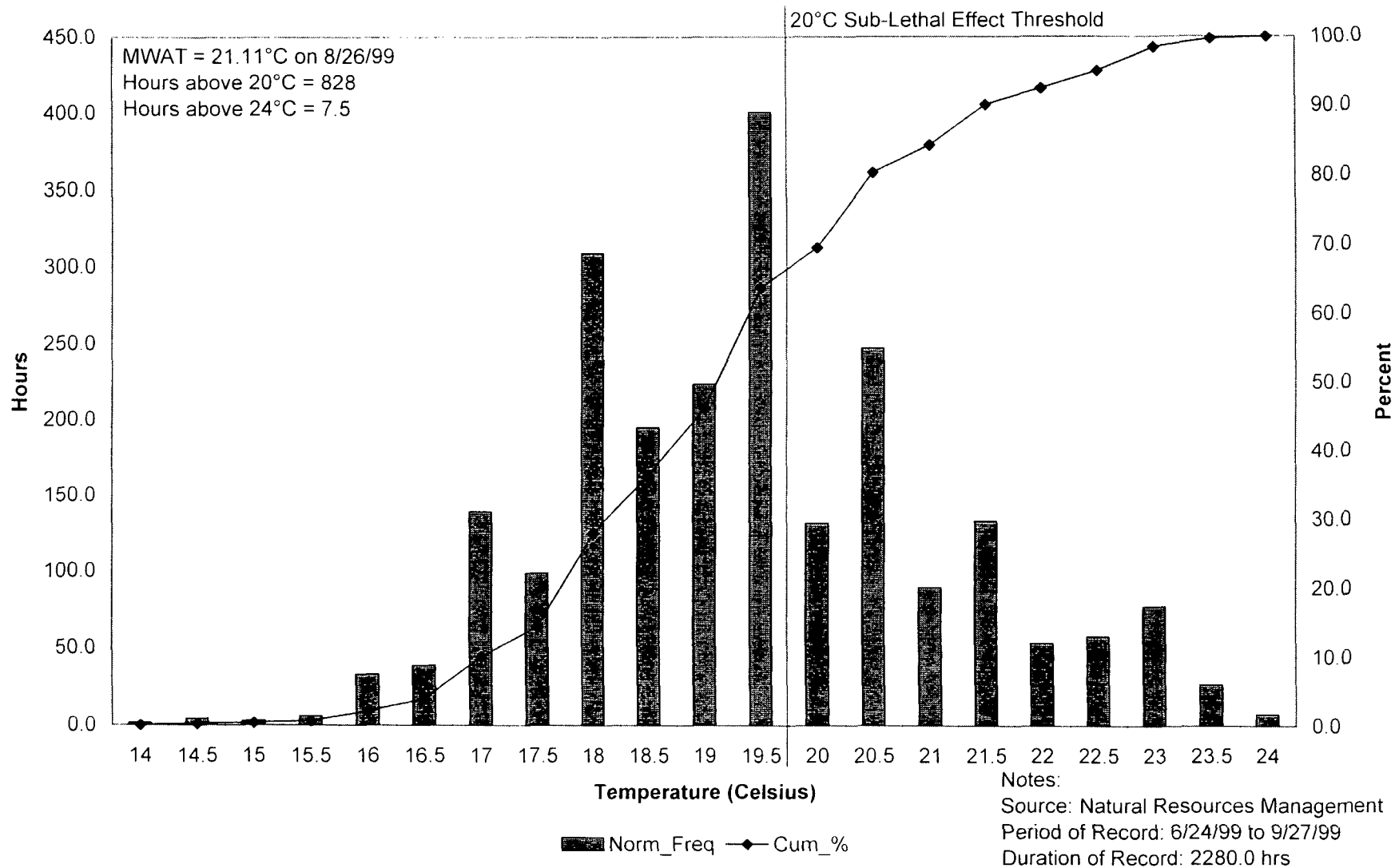


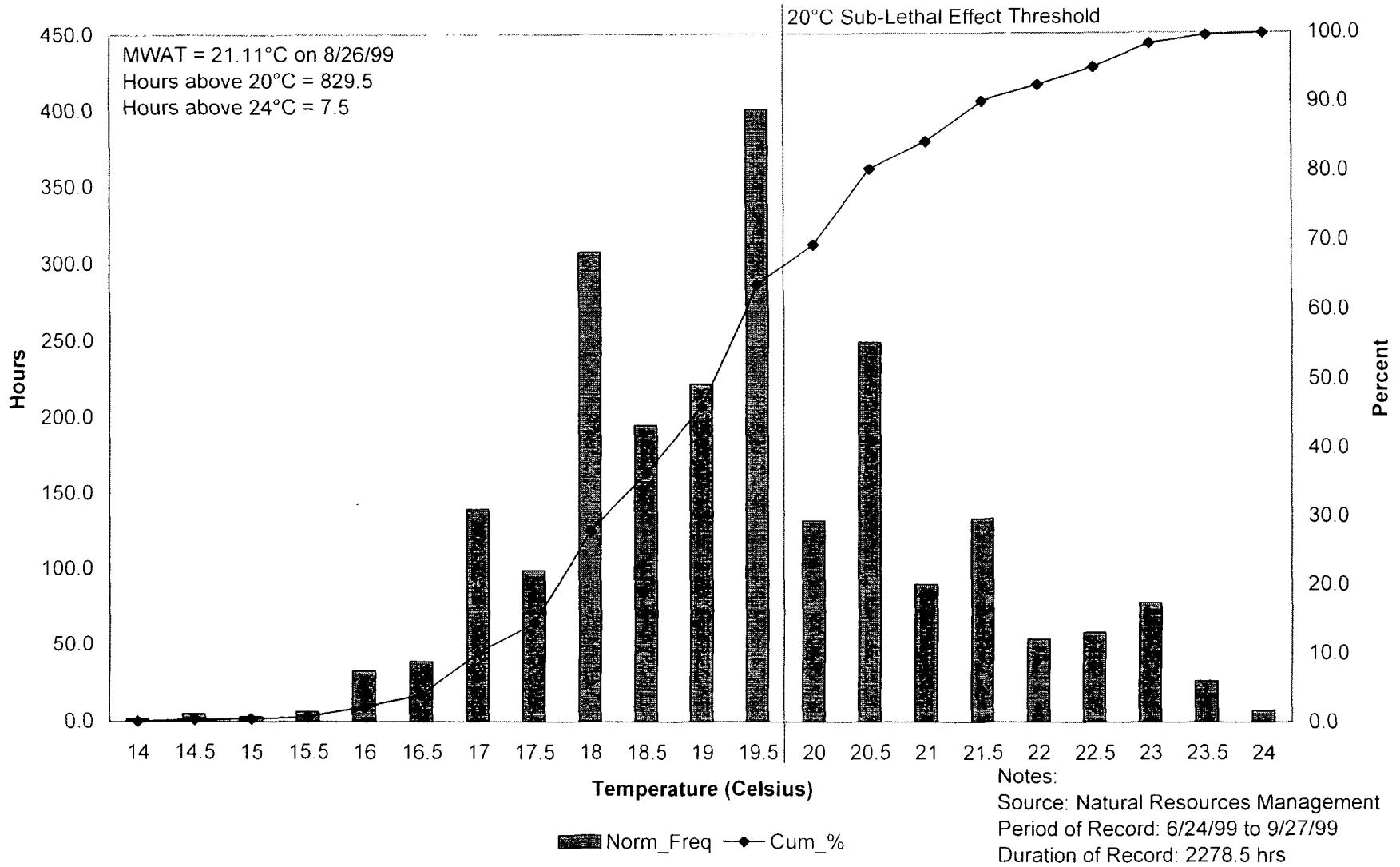
### Cumulative Temperature Distribution: ~1800' downstream of Mad River hatchery (1999)



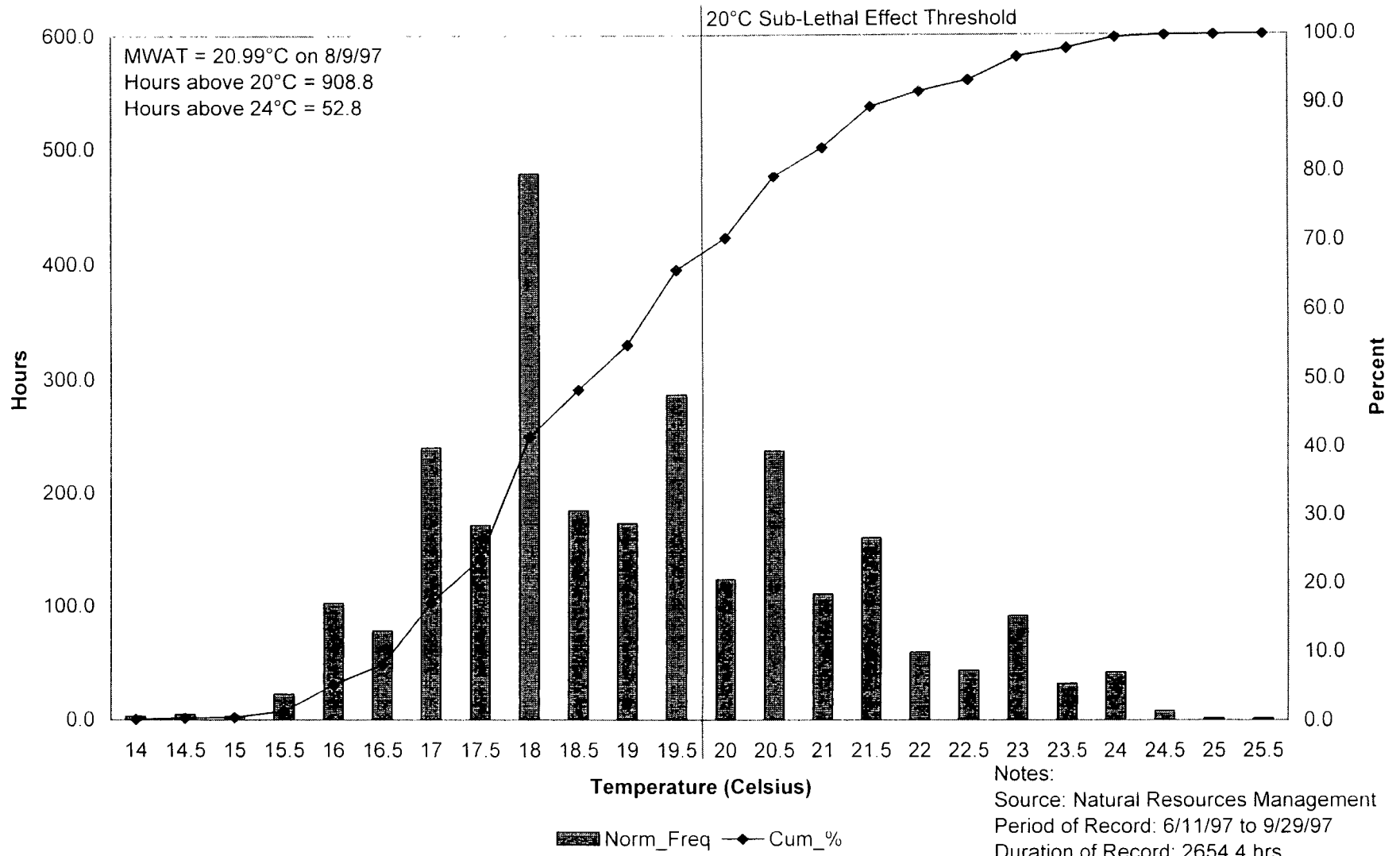
**Cumulative Temperature Distribution:  
~2600' downstream of Mad River hatchery (1999)**



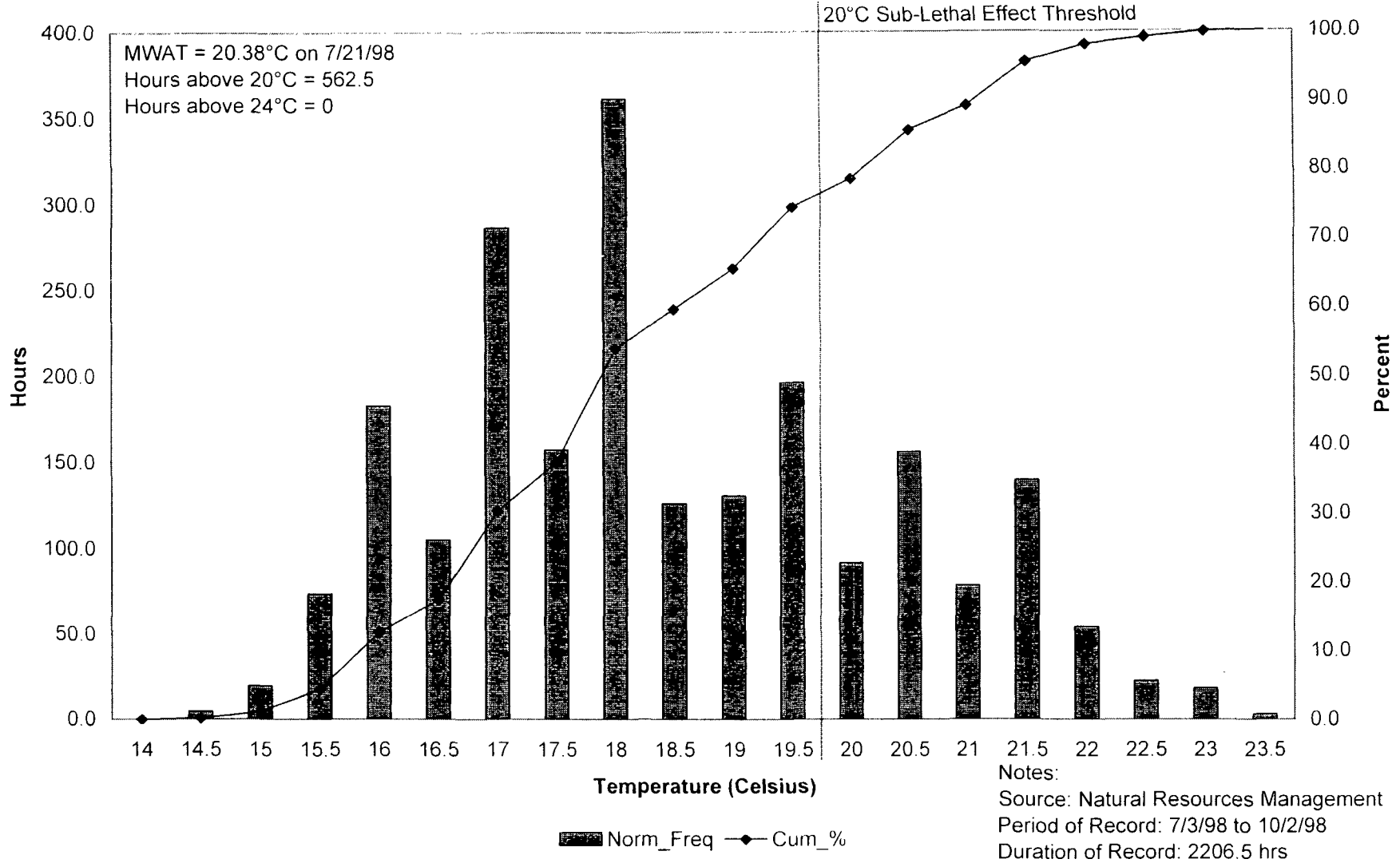
### Cumulative Temperature Distribution: Mad River ~750' upstream of Blue Lake oxidation ponds (1999)



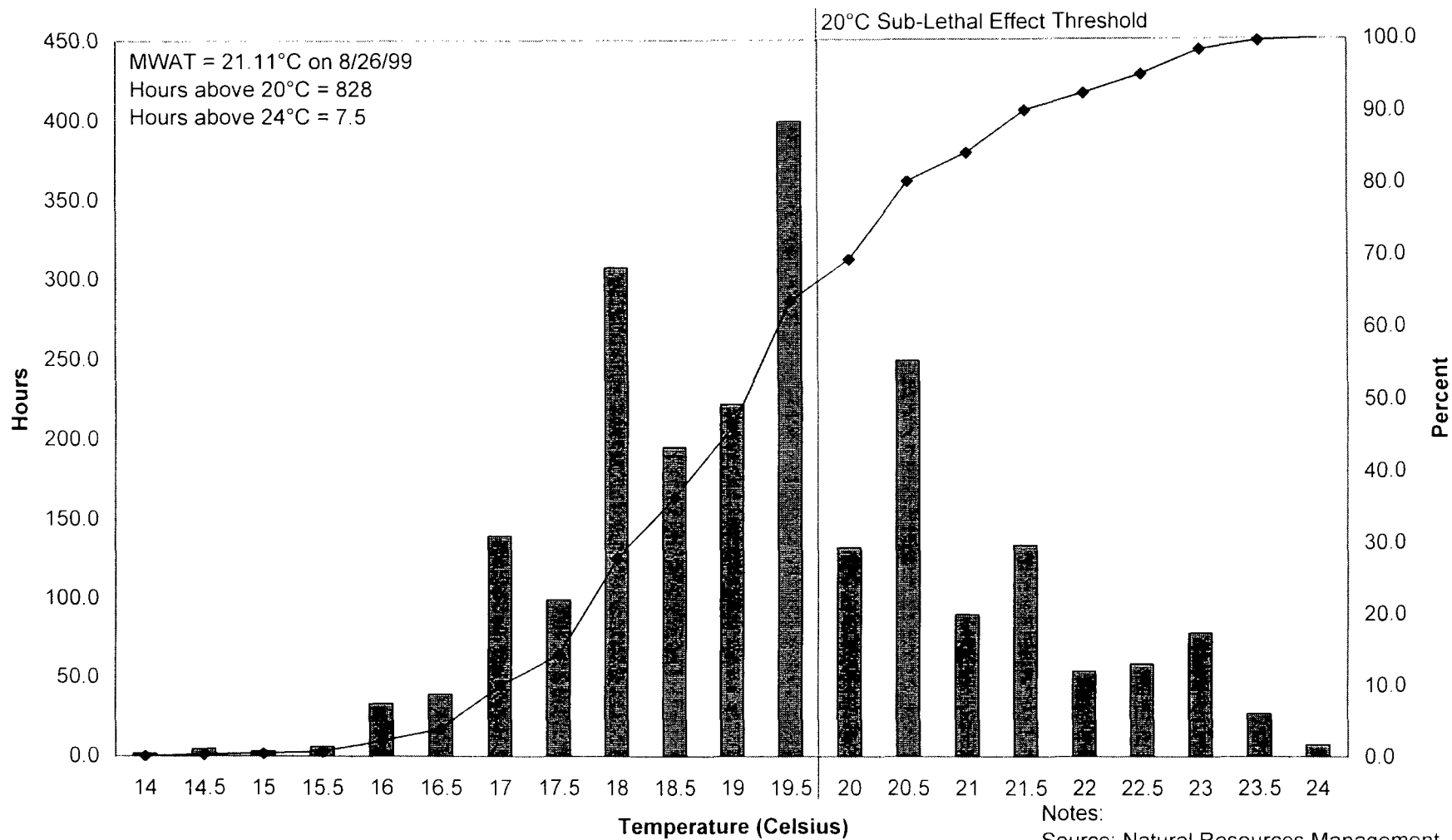
**Cumulative Temperature Distribution:  
Mad River ~2.27 miles upstream of Hwy 299 bridge (1997)**



**Cumulative Temperature Distribution:  
Mad River ~2.95 miles upstream of Hwy 299 bridge (1998)**



**Cumulative Temperature Distribution:  
Mad River ~2.6miles upstream of Hwy 299 bridge (1999)**

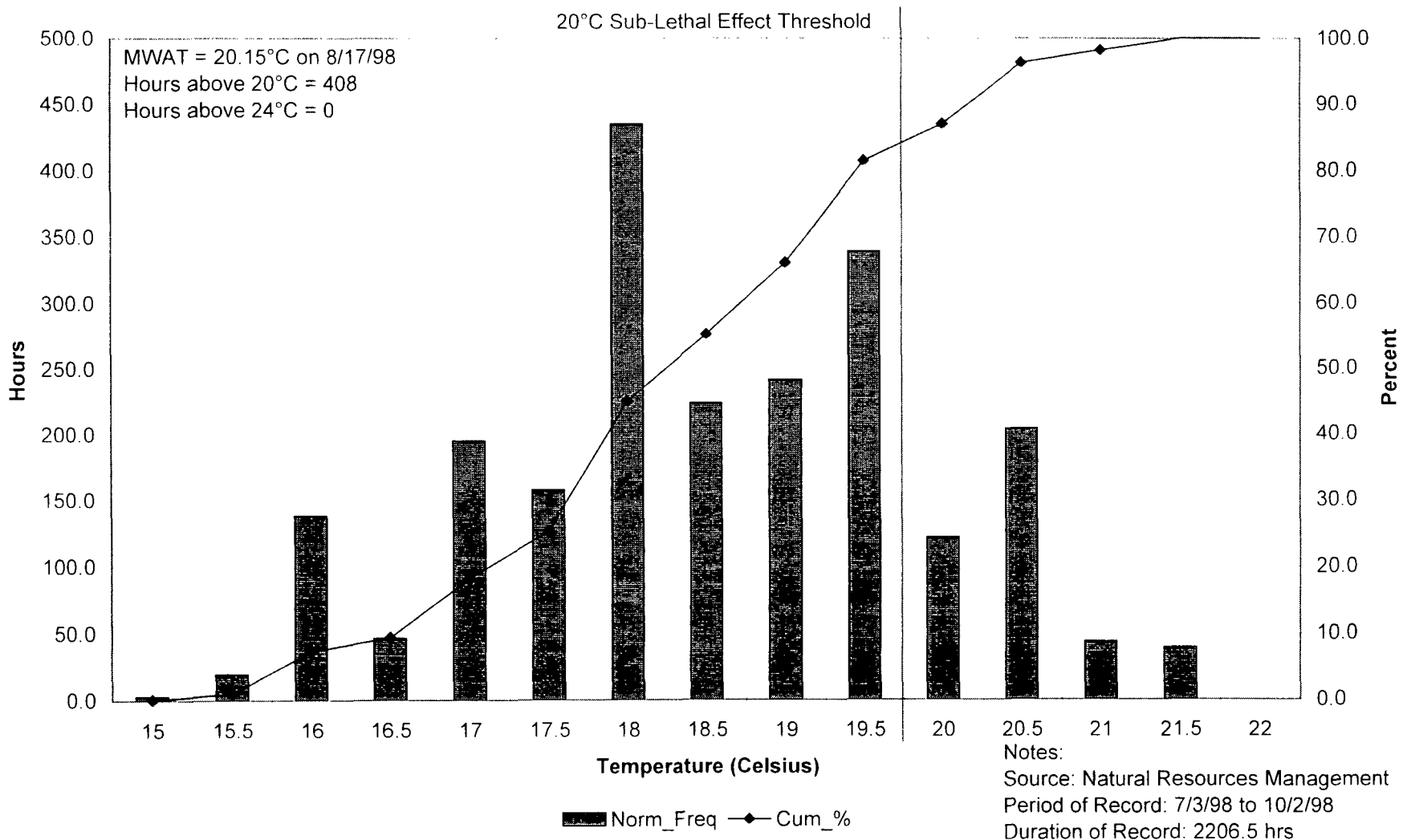


█ Norm\_Freq    ◆ Cum\_%

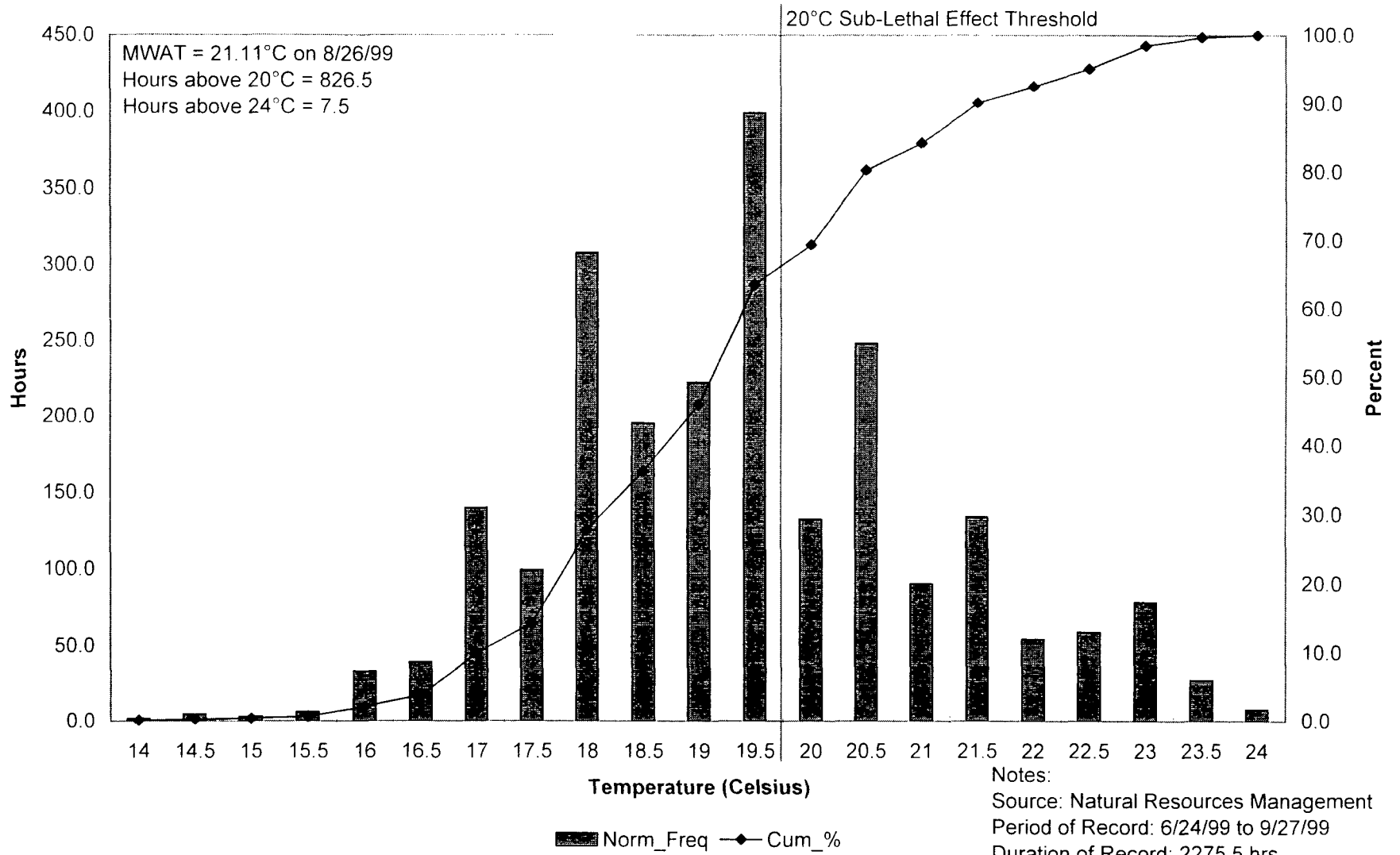
**Notes:**

Source: Natural Resources Management  
 Period of Record: 6/24/99 to 9/27/99  
 Duration of Record: 2277.0 hrs

**Cumulative Temperature Distribution:  
Mad River ~8000' upstream of Hwy 101 bridge (1998)**

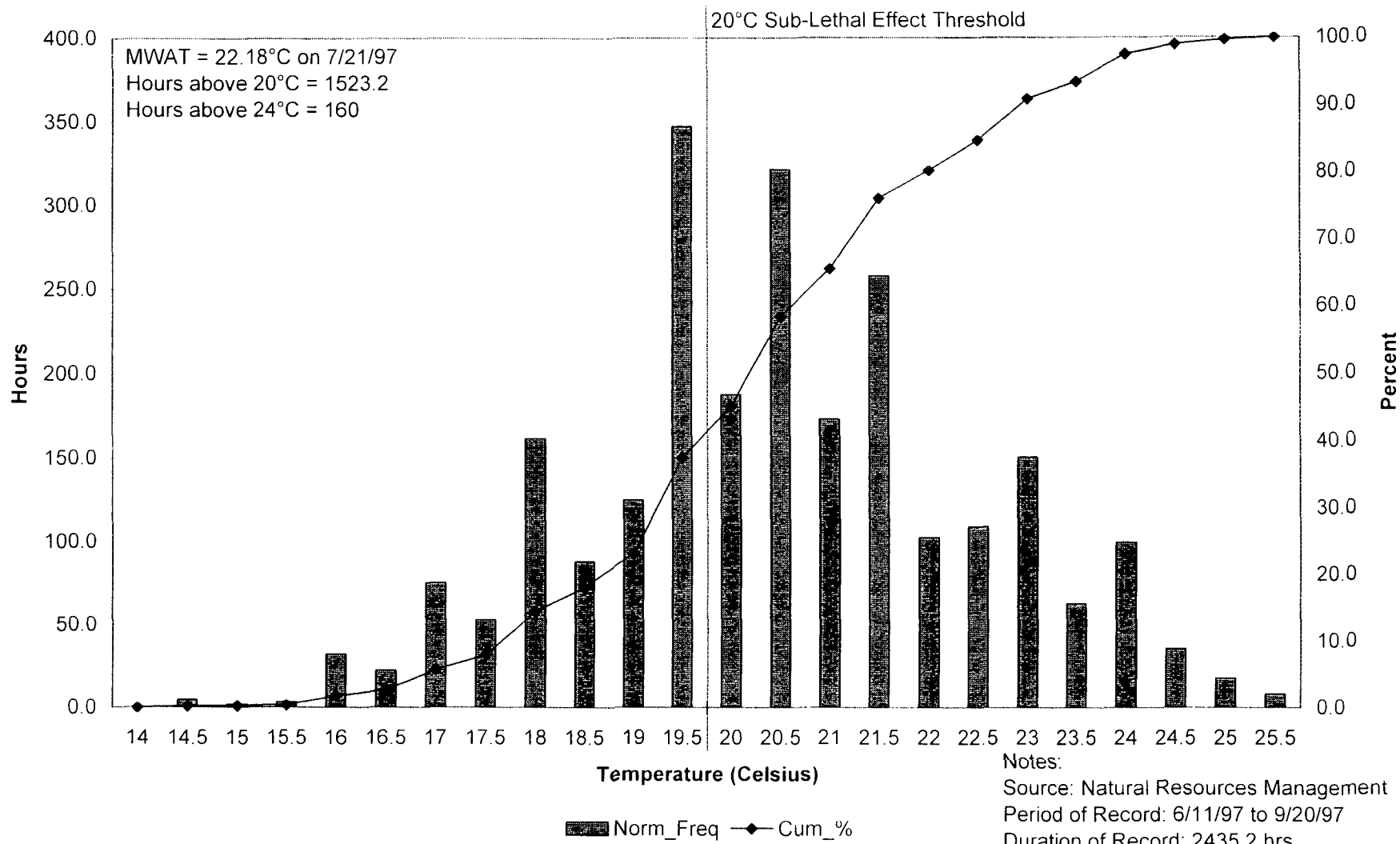


**Cumulative Temperature Distribution:  
Mad River ~8000' upstream of Hwy 101 bridge (1999)**

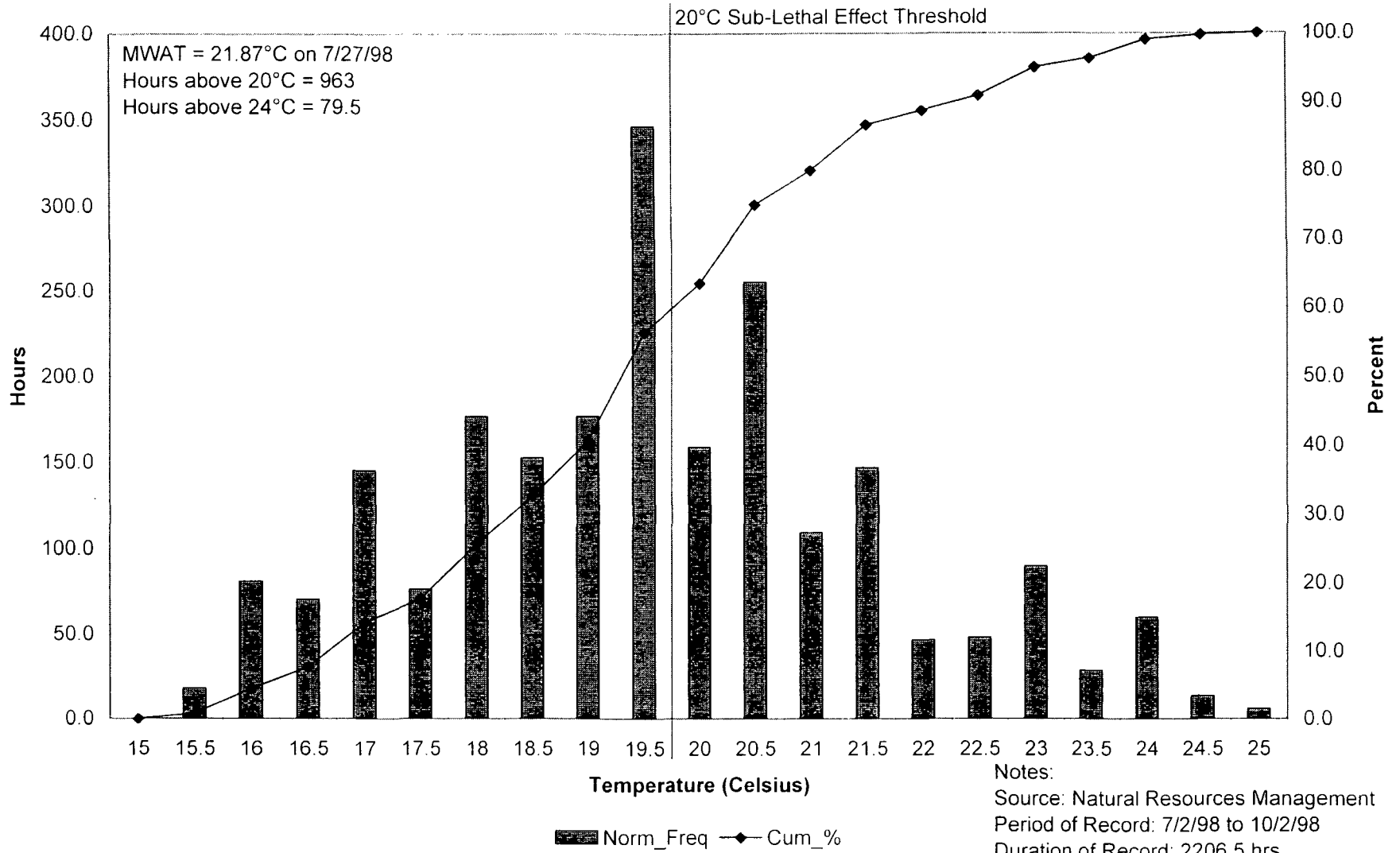




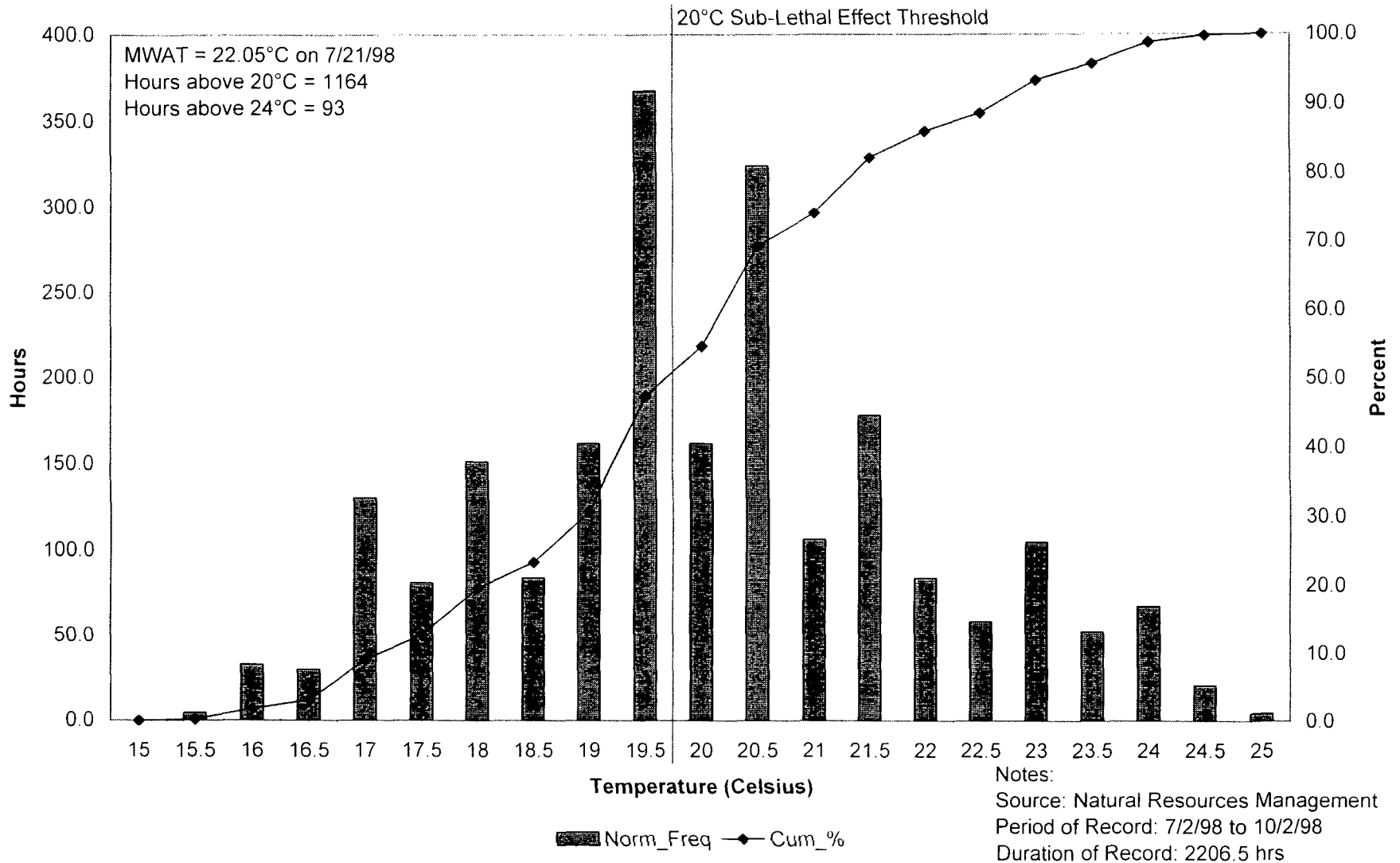
### Cumulative Temperature Distribution: ~1600' downstream of Mad River hatchery (1997)



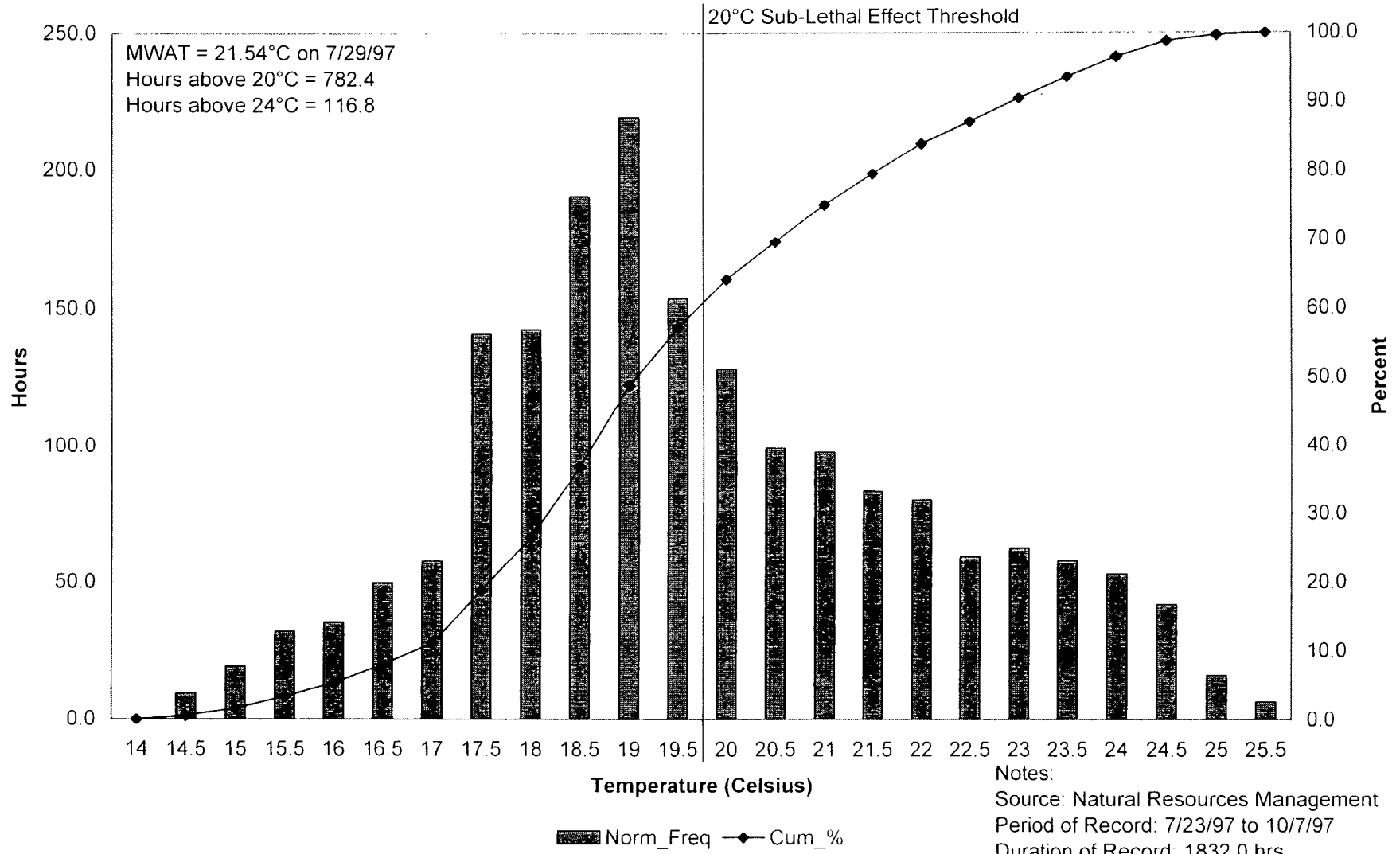
**Cumulative Temperature Distribution:  
~1800' downstream of Mad River hatchery (1998)**



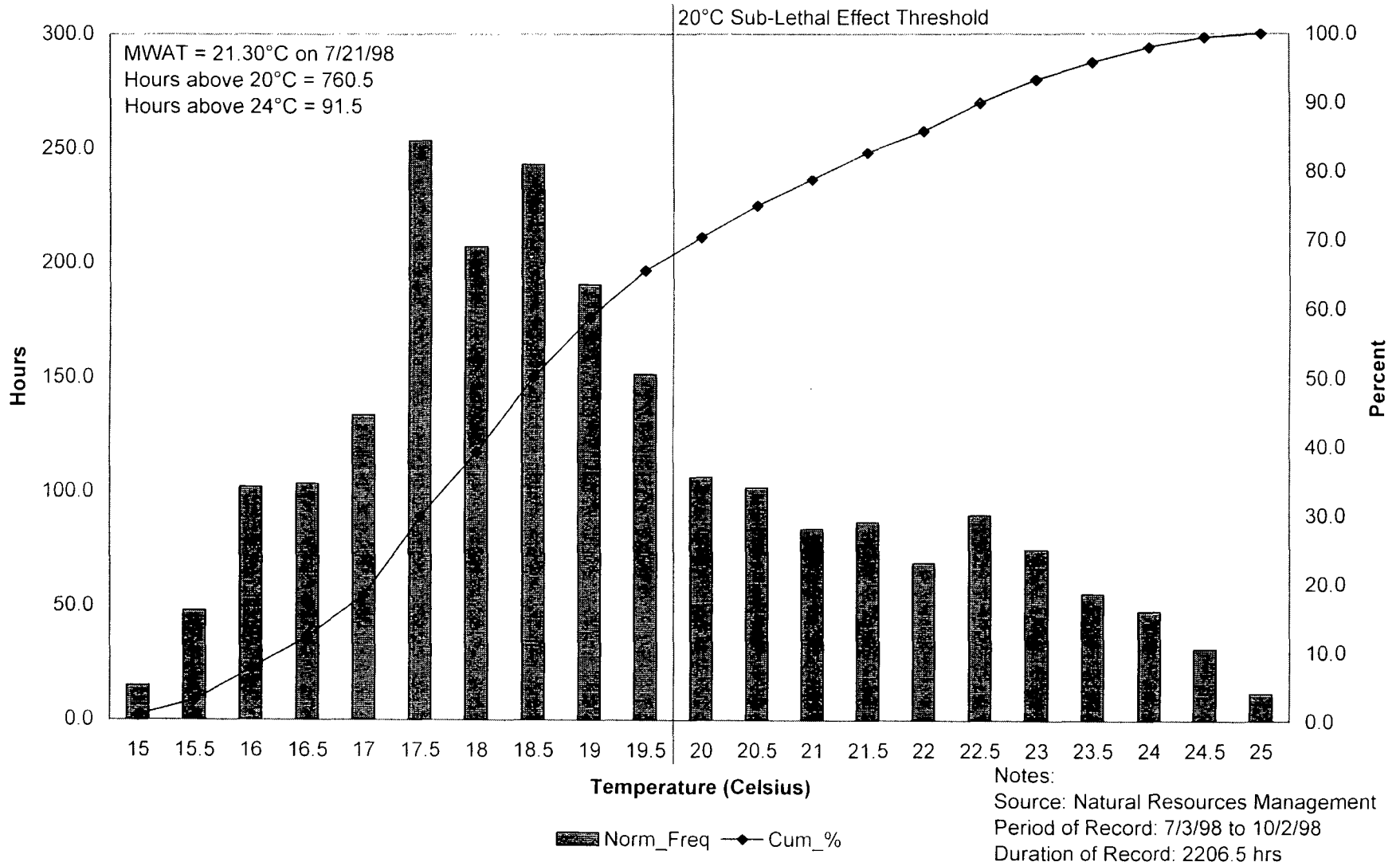
**Cumulative Temperature Distribution:  
~2600' downstream of Mad River hatchery (1998)**



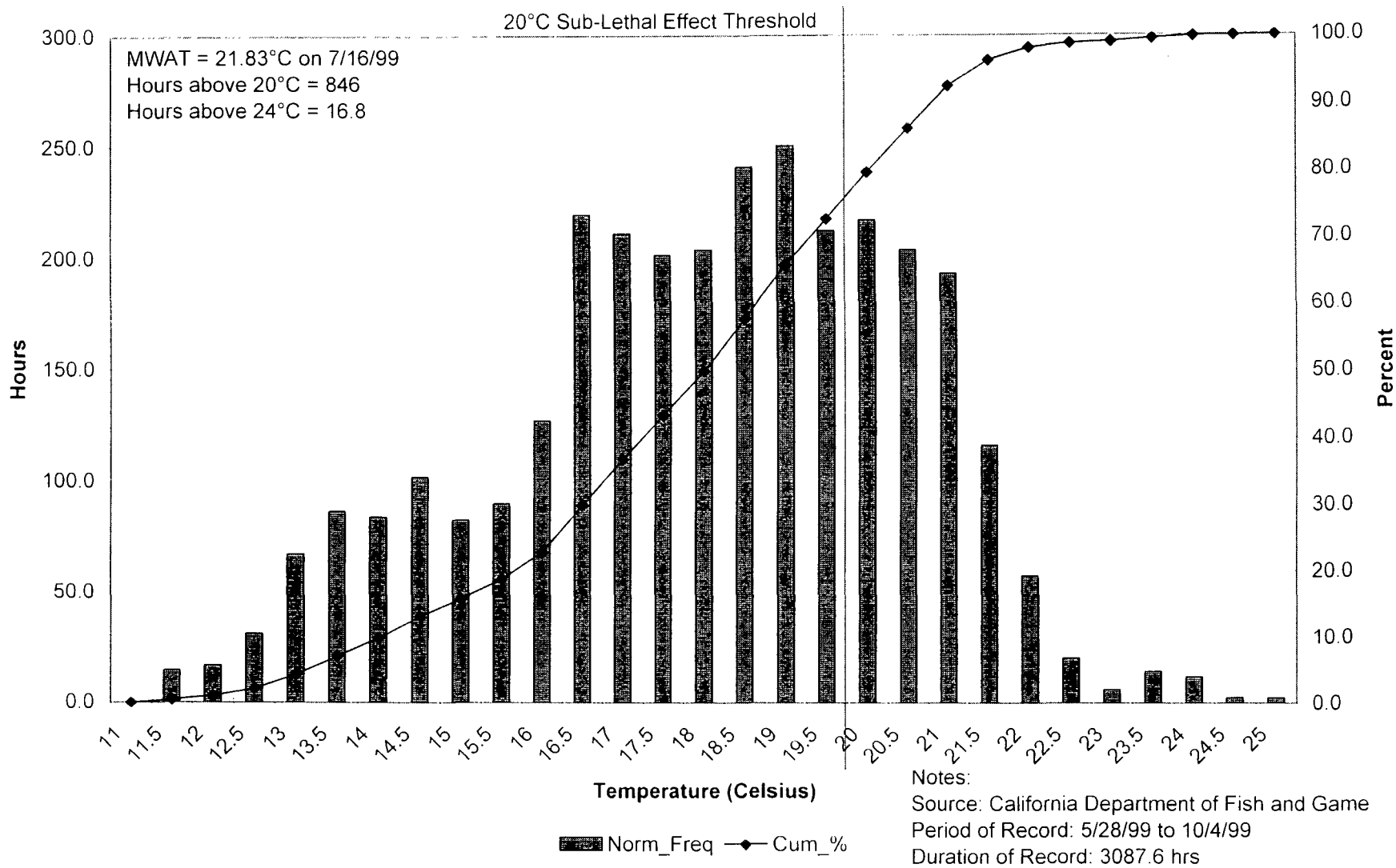
### Cumulative Temperature Distribution: Mad River ~750' upstream of Blue Lake oxidation ponds (1997)



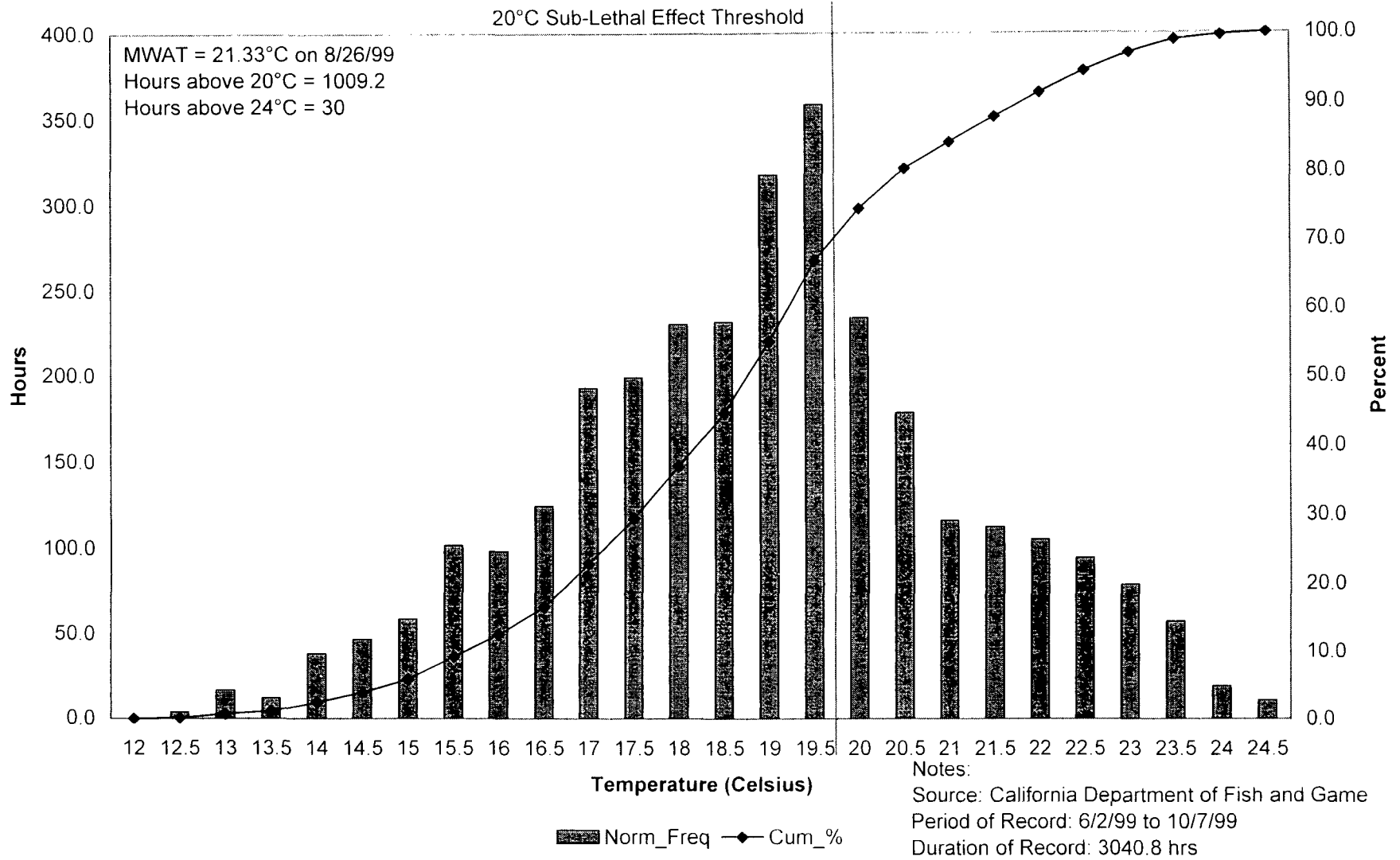
### Cumulative Temperature Distribution: Mad River ~1500' downstream of Blue Lake Bridge (1998)



### Cumulative Temperature Distribution: Mad River at Deer Creek (1999)



### Cumulative Temperature Distribution: Mad River at Dry Creek (1999)



### Cumulative Temperature Distribution: Mad River at Goodman Prairie Creek (1999)

