

April 7, 2001

Matt St. John  
North Coast Water Quality Control Board  
5550 Skylane Boulevard, Suite A  
Santa Rosa, CA 95403

Regarding: Illegal dumping that affects the water quality at Liscomb Slough, Arcata, CA

Dear Matt St. John:

Liscomb slough is a nursery for marine organisms that will later venture out into Humboldt Bay and the Pacific Ocean. Now that some of the contaminated materials have been removed from this area, the eel grass beds have returned and large schools of herring and Dungeness crab can be seen beneath the bridge at low tide in the summer before they head out into the bay. The oyster beds in Humboldt Bay, located less than one mile from this site, are flushed twice daily with water that drains from Liscomb slough. There should be a way with all of the agencies whose interests are present at this site for some improvement over present circumstances. It would be so helpful to have someone responsible for keeping the materials listed on the accompanying page from lying alongside the road and in the slough for years.

The following agencies and individuals have been contacted about this problem: Sheriff's Department, Highway Patrol, Dept. of Fish and Game, Department of Public Works, Department of Environmental Health, Arcata city councilmember Bob Ornelas, and the North Coast Water Quality Control Board.

Thank you for your time,



Ted Halstead

Mailing Address: 1515 McFarlan St., Eureka, CA 95501

Phone Number: (707) 445-2465

email address: [pamhal@northcoast.com](mailto:pamhal@northcoast.com)

Accompanying data: 1) A list of items retrieved from Liscomb slough  
2) Map of Liscomb slough  
3) Photos that illustrate the problem and partial cleanup of Liscomb slough

Original compilation: Oct. 16-Nov. 17, 1998

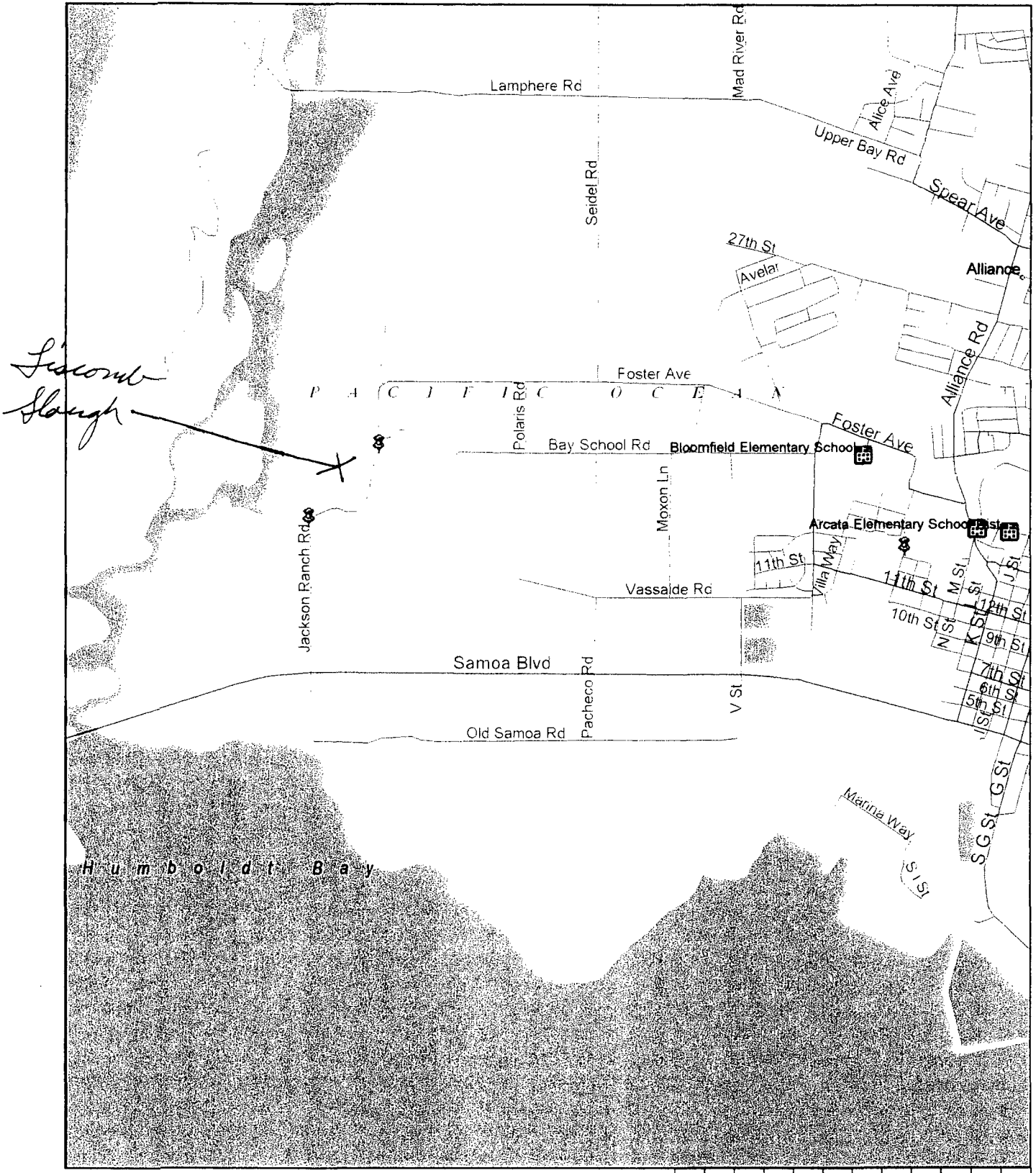
Updated: April 7, 2001

List of materials removed from Jackson Ranch Rd. Bridge site and road

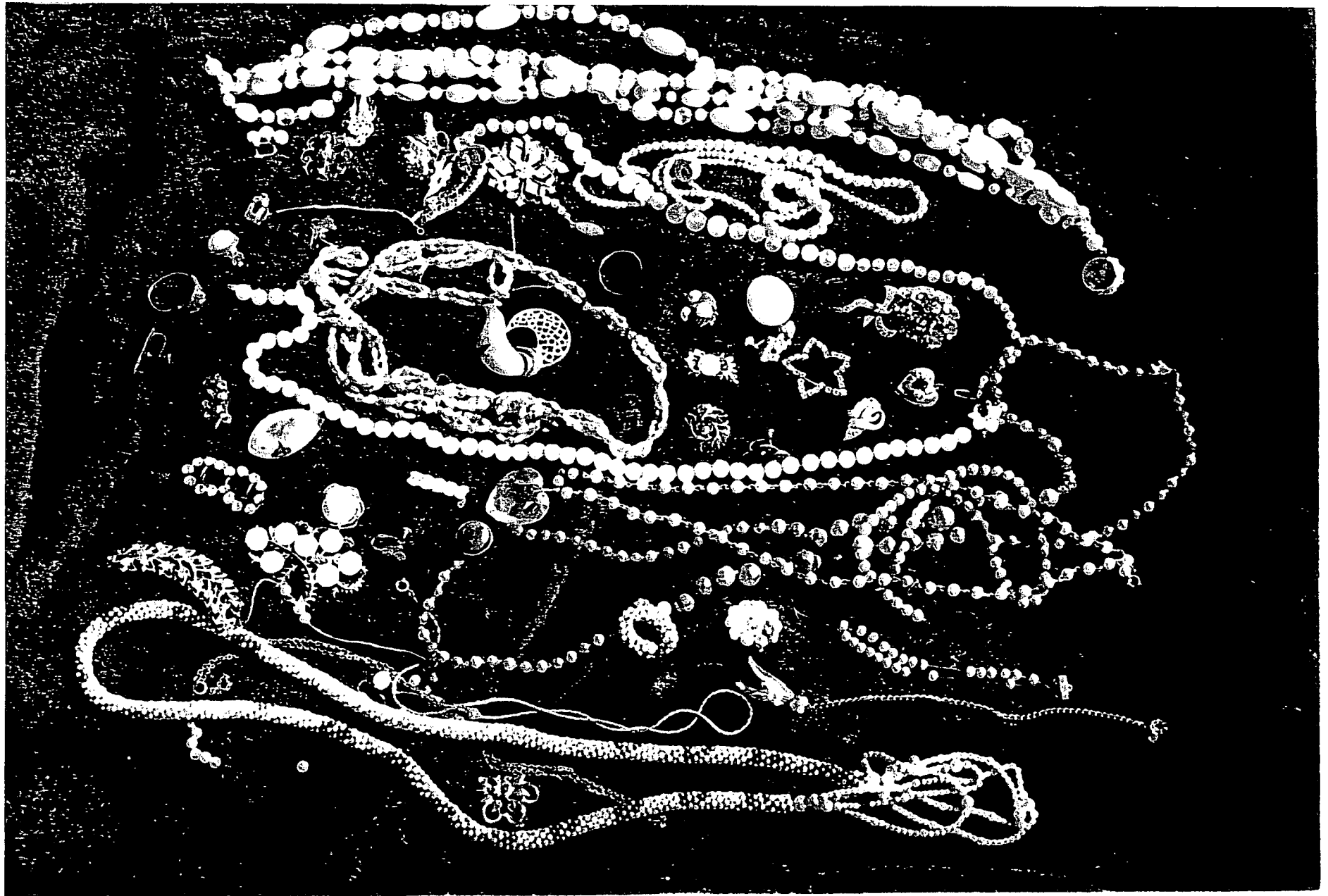
Note: liquor cans and bottles are removed on a daily basis. Amount is equivalent to two six-packs per day.

- 1 Times-Standard newspaper vending machine
- 1 pay telephone
- 5 video cassette recorders
- 2 televisions
- 1 Kirby vacuum cleaner
- 2 washing machines, 1 refrigerator, 1 freezer
- 2 clothes dryers
- 1 bag of phones
- 10 car batteries
- 5 bundles of old linoleum and carpet squares
- 8 oil saturated carpets
- 2 bike frames, 1 bowling pin
- 20 car seats
- 4 clothesline mechanisms
- 4 electrical service boxes
- 40 bags of animal parts (bones and skins) weighted with stones
- Several truckloads of miscellaneous metal scraps and car parts
- Many bags of contaminated pea gravel (noxious fumes upon contact)
- 8 mattresses, 1 waterbed
- Many truckloads of miscellaneous household garbage (bottles, hose nozzles, broken china, shower curtains, toys, trash)
- 1 engine block, 3 truck radiators
- 75 car tires, 2 bumpers, 1 fender
- 3 water heaters
- A lawnmower, hedge trimmer, and grass trimmer
- Remains of 3 automobiles
- 1 welding tank
- 10 toilet bowls, 1 pile of women's jewelry
- 4 bags of clothing strewn about
- 3 large bags of dog excrement, 1 homemade doghouse
- 8 deer carcasses and 5 calf carcasses
- 2 recliners, 1 hide-a-bed couch, 1 studio chair, 2 kitchen chairs
- 1 Peterbuilt semi truck bumper and pair of mud flaps
- 1 large child's swimming pool and 1 bath tub
- 4 five gallon buckets of oil based paint and 15 one gallon paint cans placed in the slough along with discarded rain gutters and paint cloths
- 40-50 hollow point bullets
- 4 garbage cans and 10 bags of marijuana stems and leaves along with dozens of plant remains pulled from pots, 2 boxes of used hypodermic needles weighted with stones
- 1 WW II parachute

# Liscomb Slough, Arcata, CA



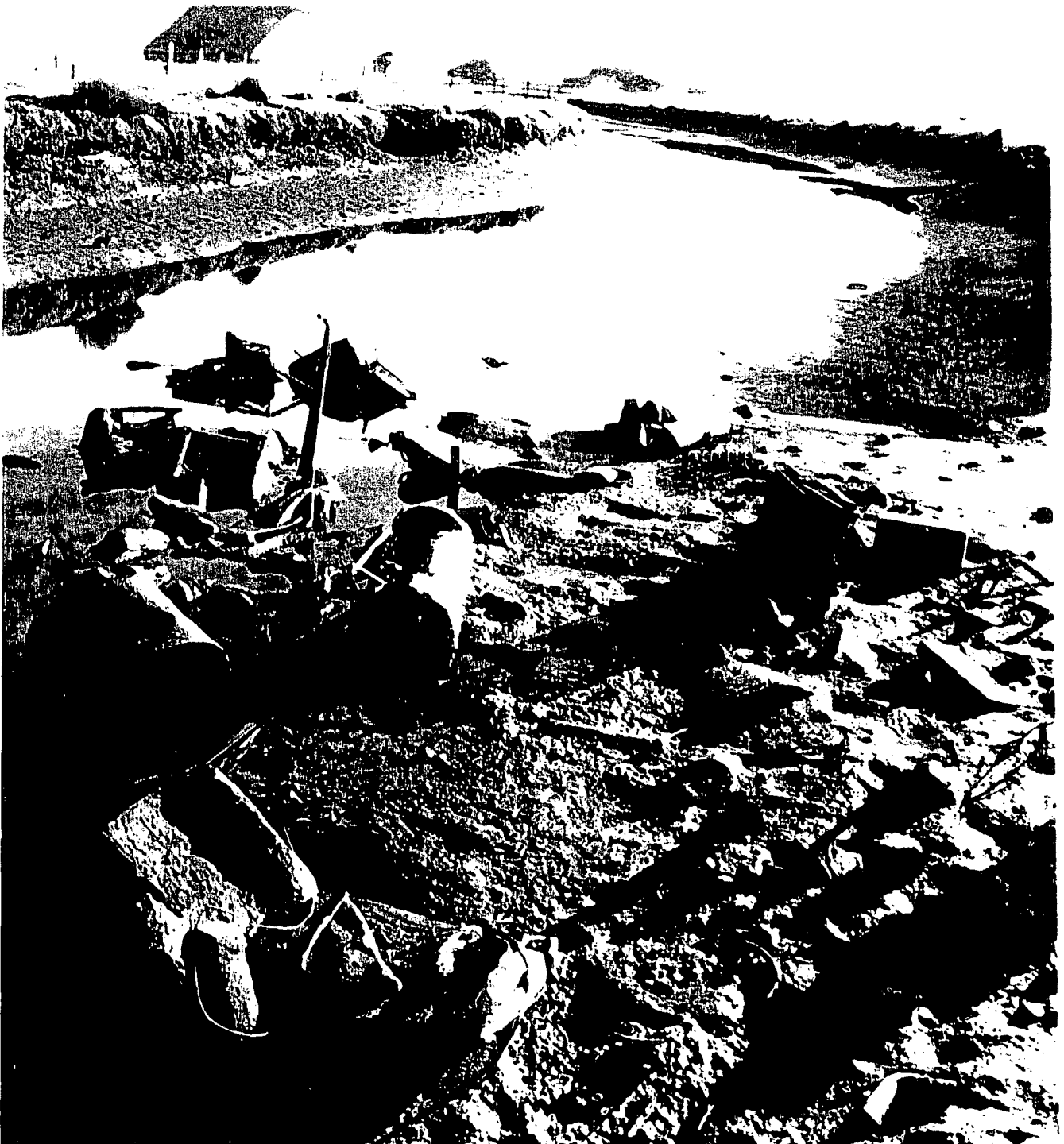
Microsoft Expedia  
**Streets98**







*(before cleanup)*



*(before cleanups)*



*(after cleanup)*







*(removed from slough)*



*an extensive cleanup of Liscomb Slough (the part that parallels the road) would greatly enhance productivity of this valuable resource.*