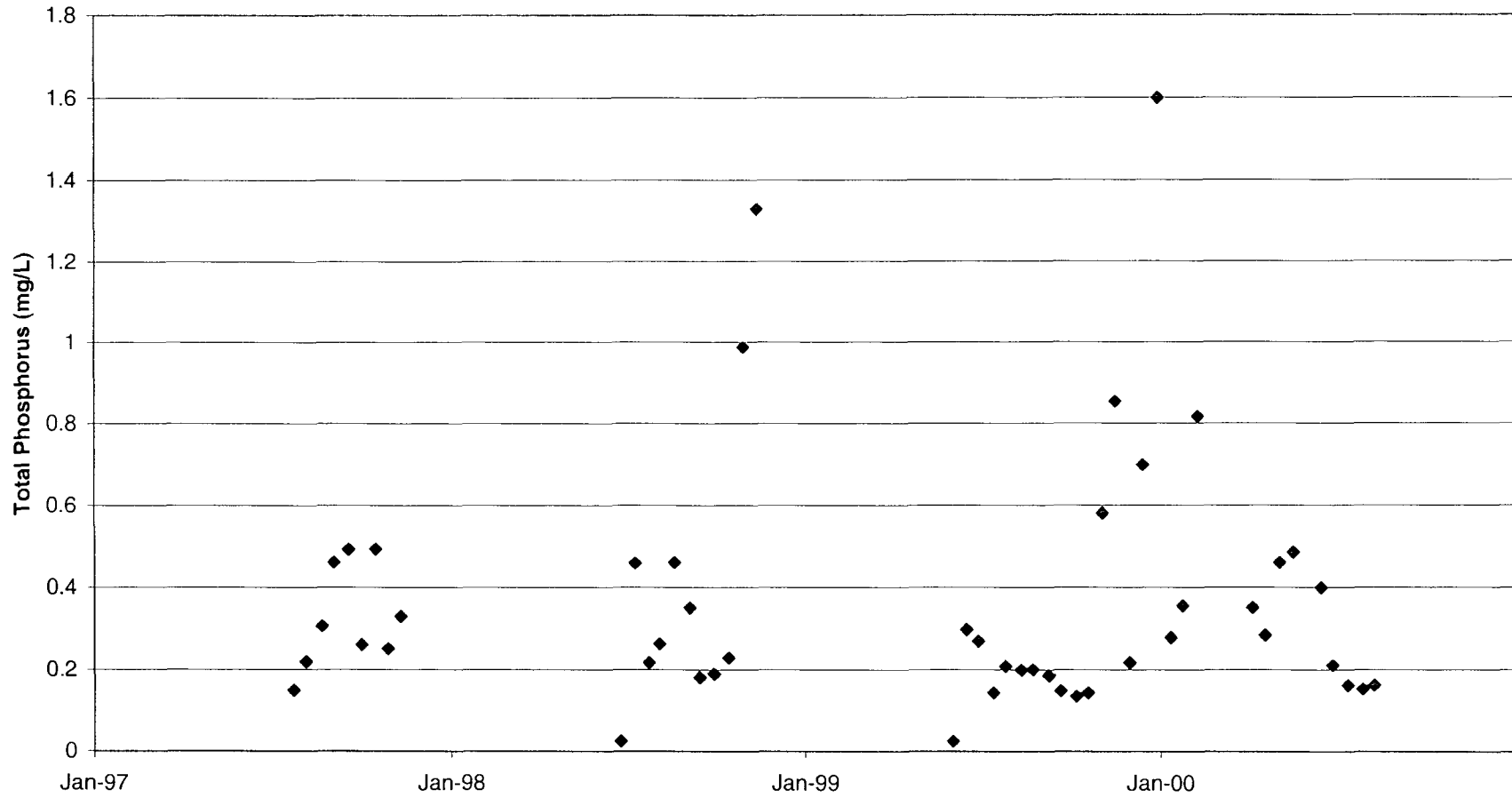


Laguna de Santa Rsoa Waster Reduction Strategy
Total Phosphorus Monitoring, 1997 - 2000

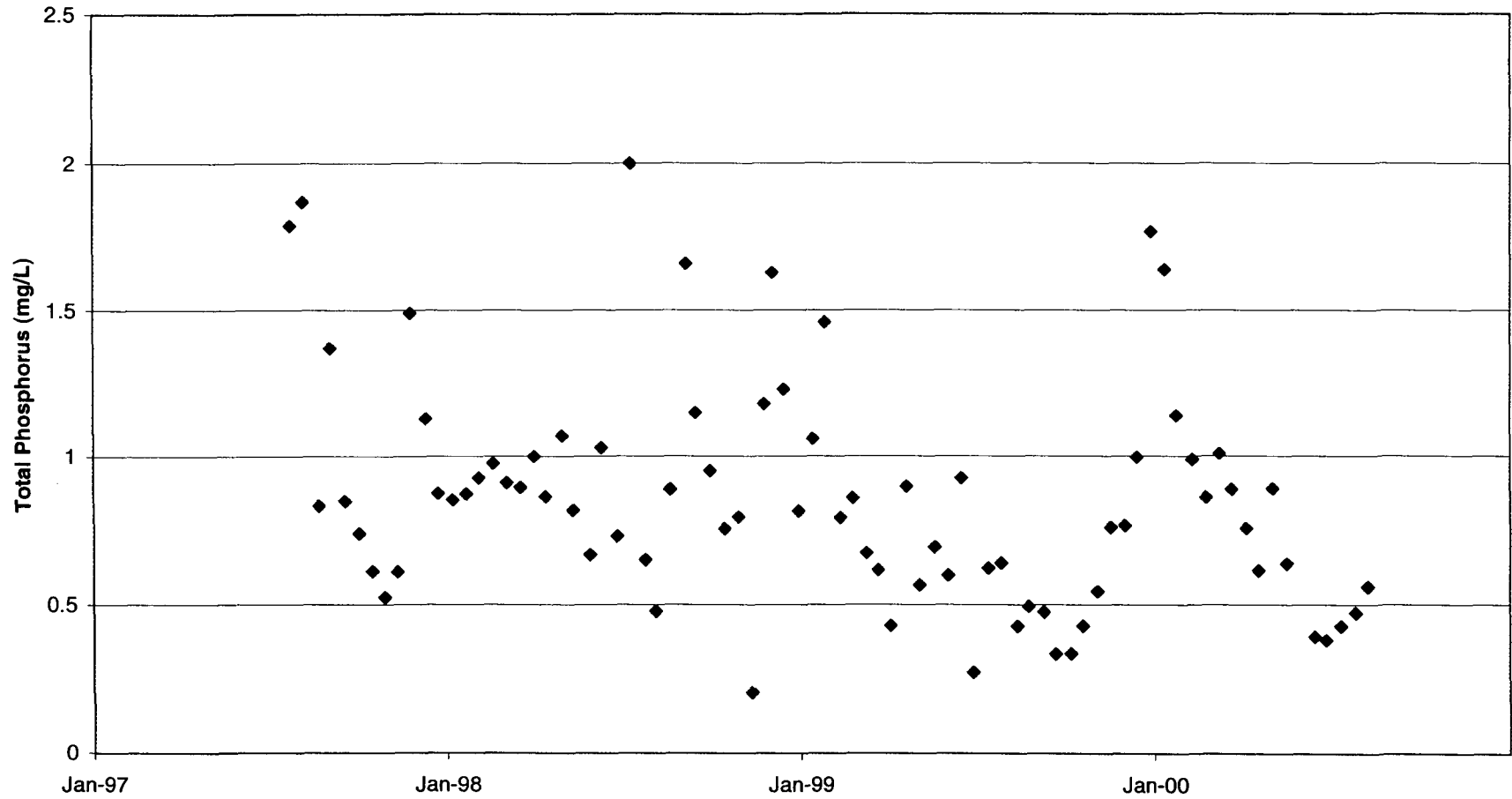
Laguna de Santa Rosa at Guerneville Road



Source: RWQCB Monitoring Data

Laguna de Santa Rosa Waster Reduction Strategy
Total Phosphorus, 1997 - 2000

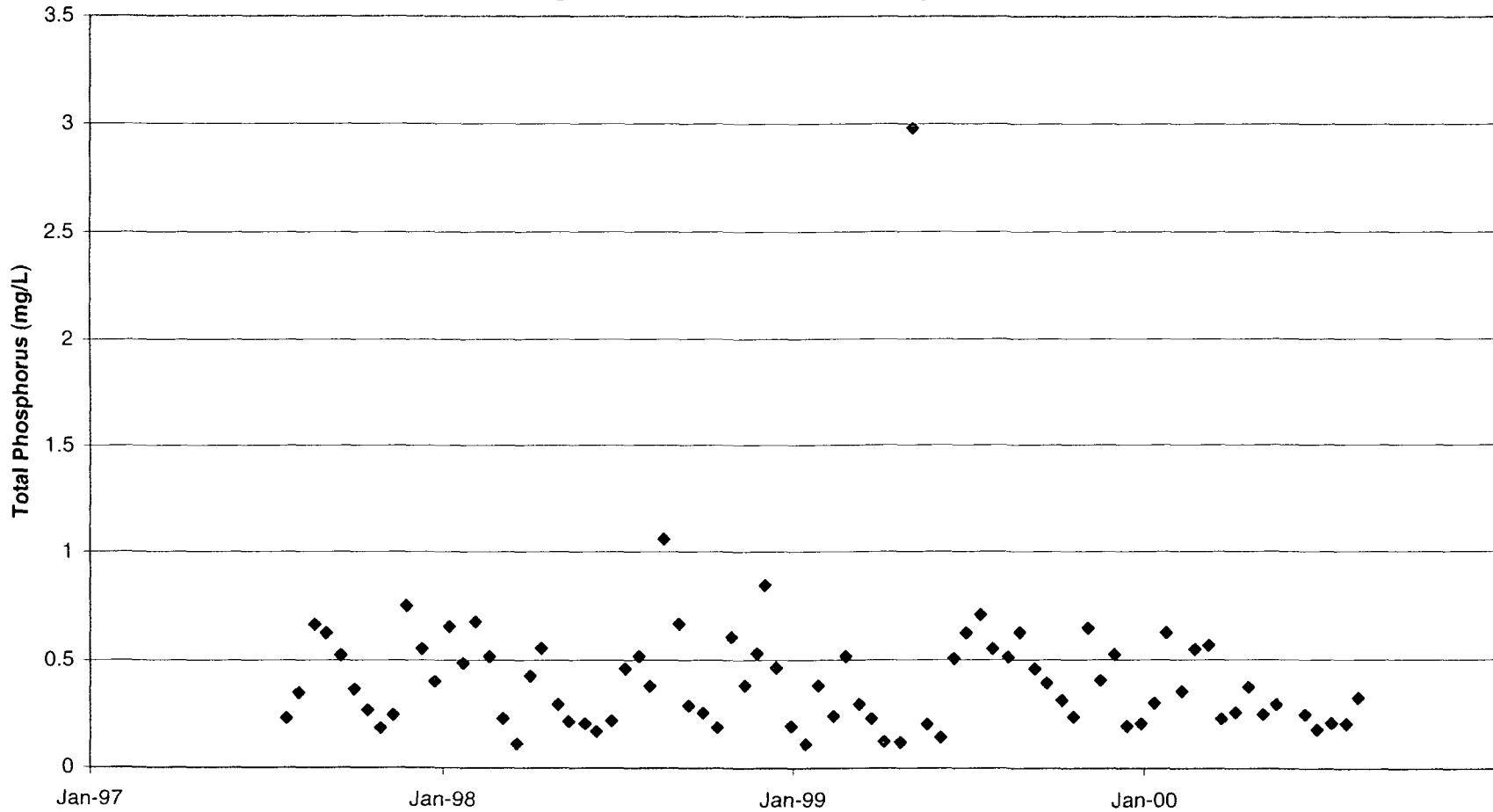
Laguna de Santa Rosa at Occidental Road



Source: RWQCB Monitoring Data

Laguna de Santa Rosa Waste Reduction Strategy
Total Phosphorus Monitoring, 1997 - 2000

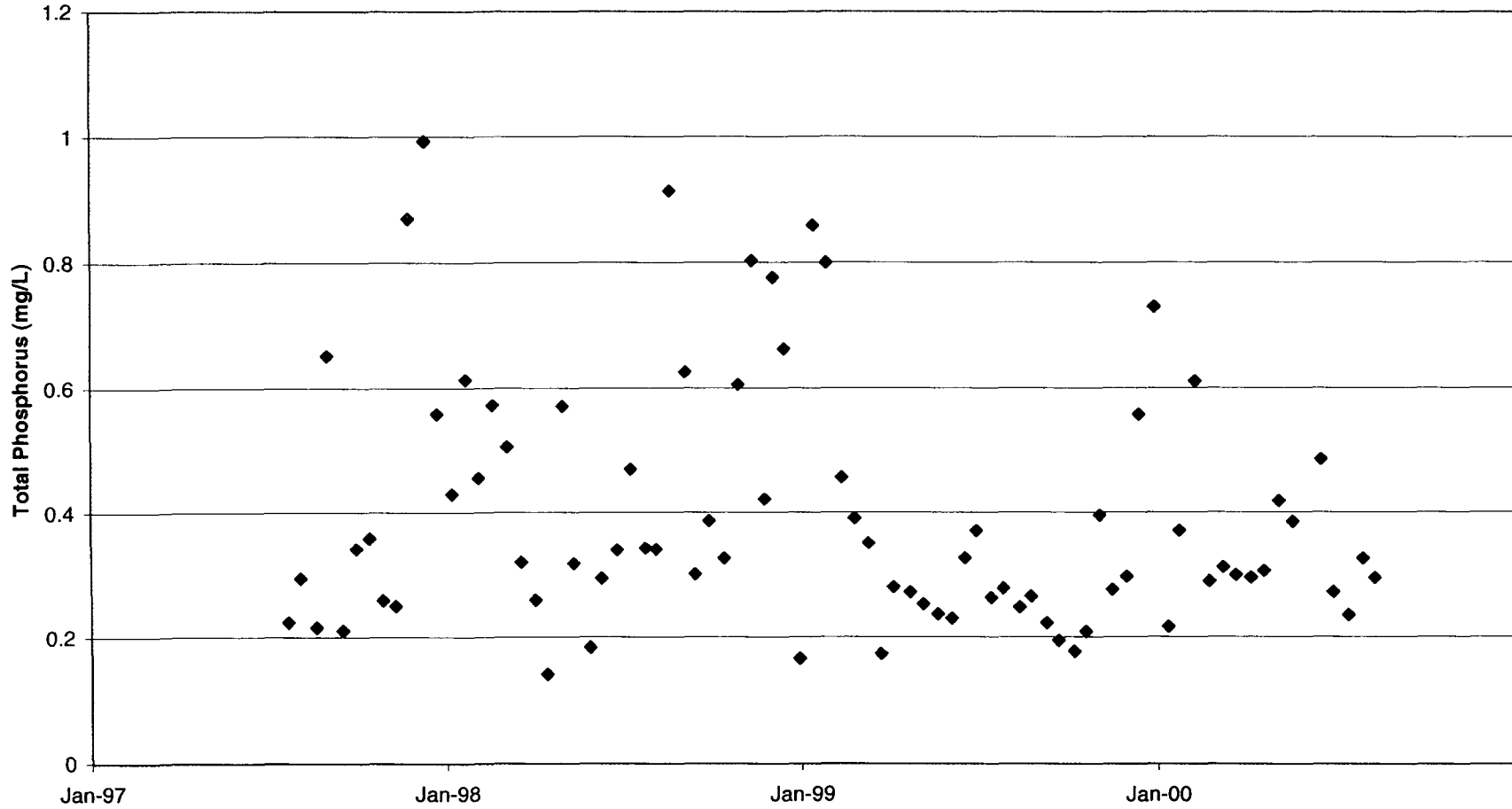
Laguna de Santa Rosa at Stony Point



Source: RWQCB Monitoring Data

**Laguna de Santa Rosa Waster Reduction Strategy
Total Phosphorus Monitoring, 1997 - 2000**

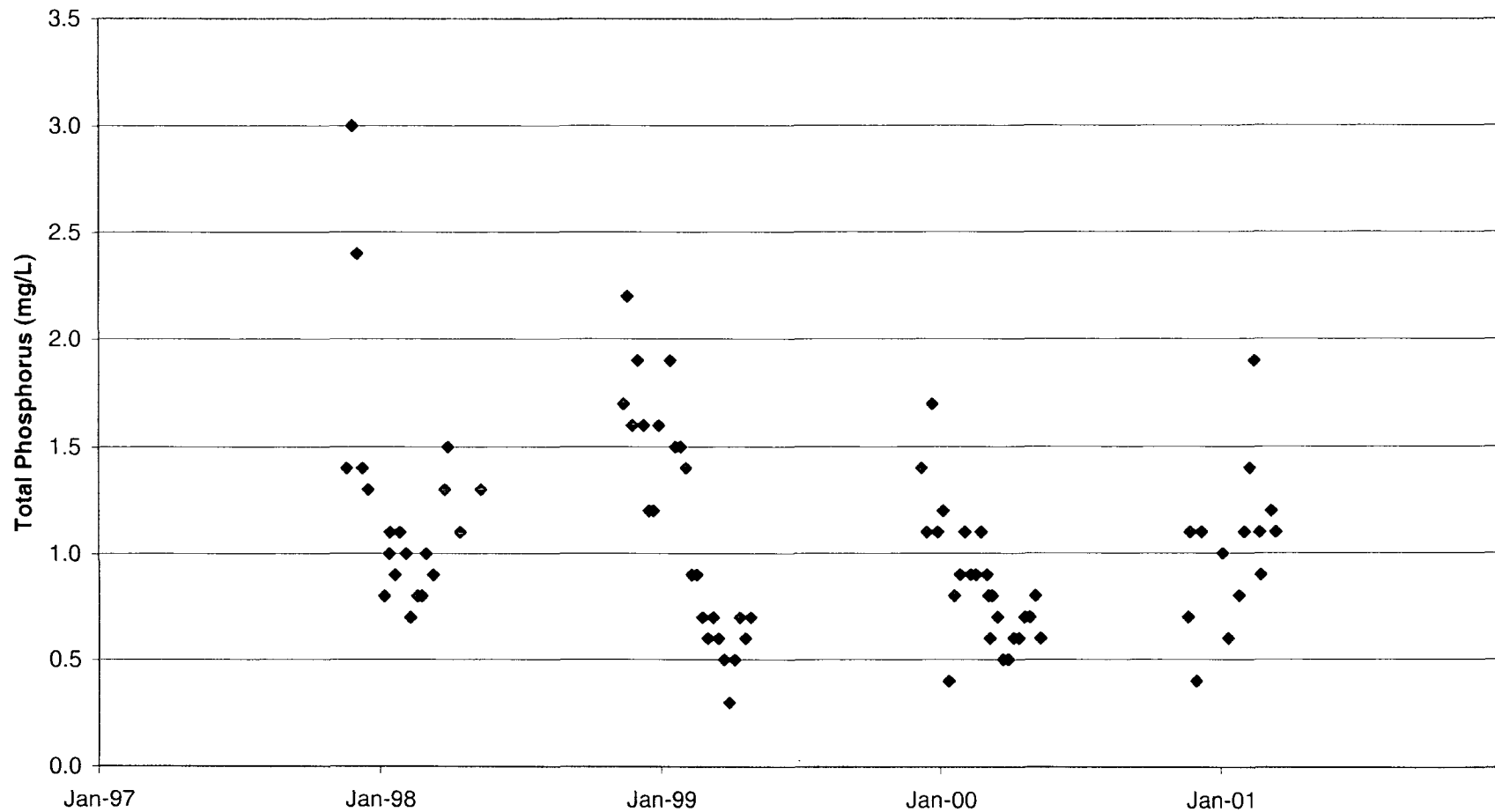
Laguna de Santa Rosa at Trenton Healdsburg



Source: RWQCB Monitoring Data

City of Santa Rosa Subregional Water Treatment Facility
Total Phosphorus Monitoring, 1997 - 2001

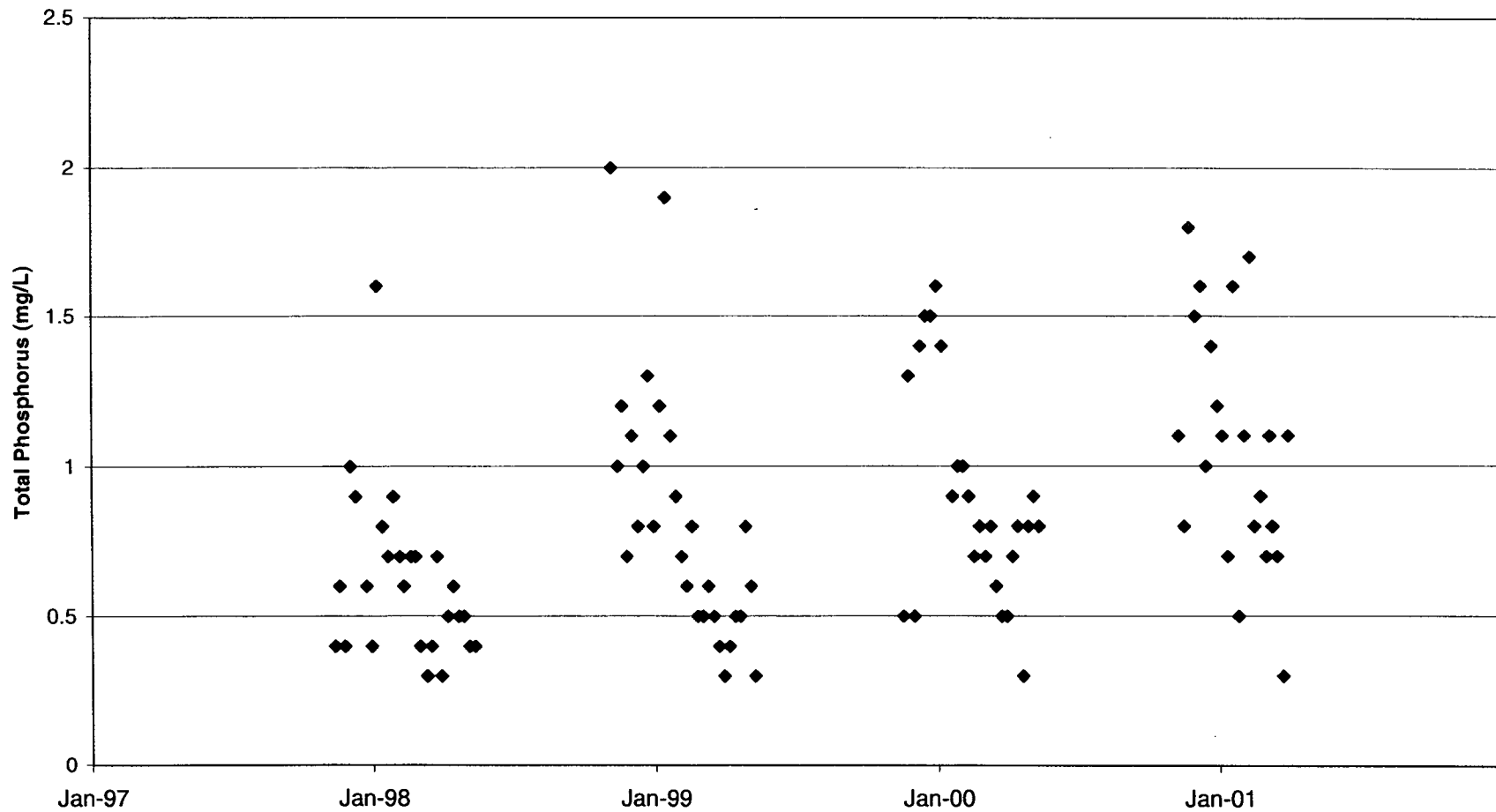
Laguna de Santa Rosa at Todd Road



Source: City of Santa Rosa monitoring data

**City of Santa Rosa Subregional Water Treatment Facility
Total Phosphorus Monitoring, 1997 - 2001**

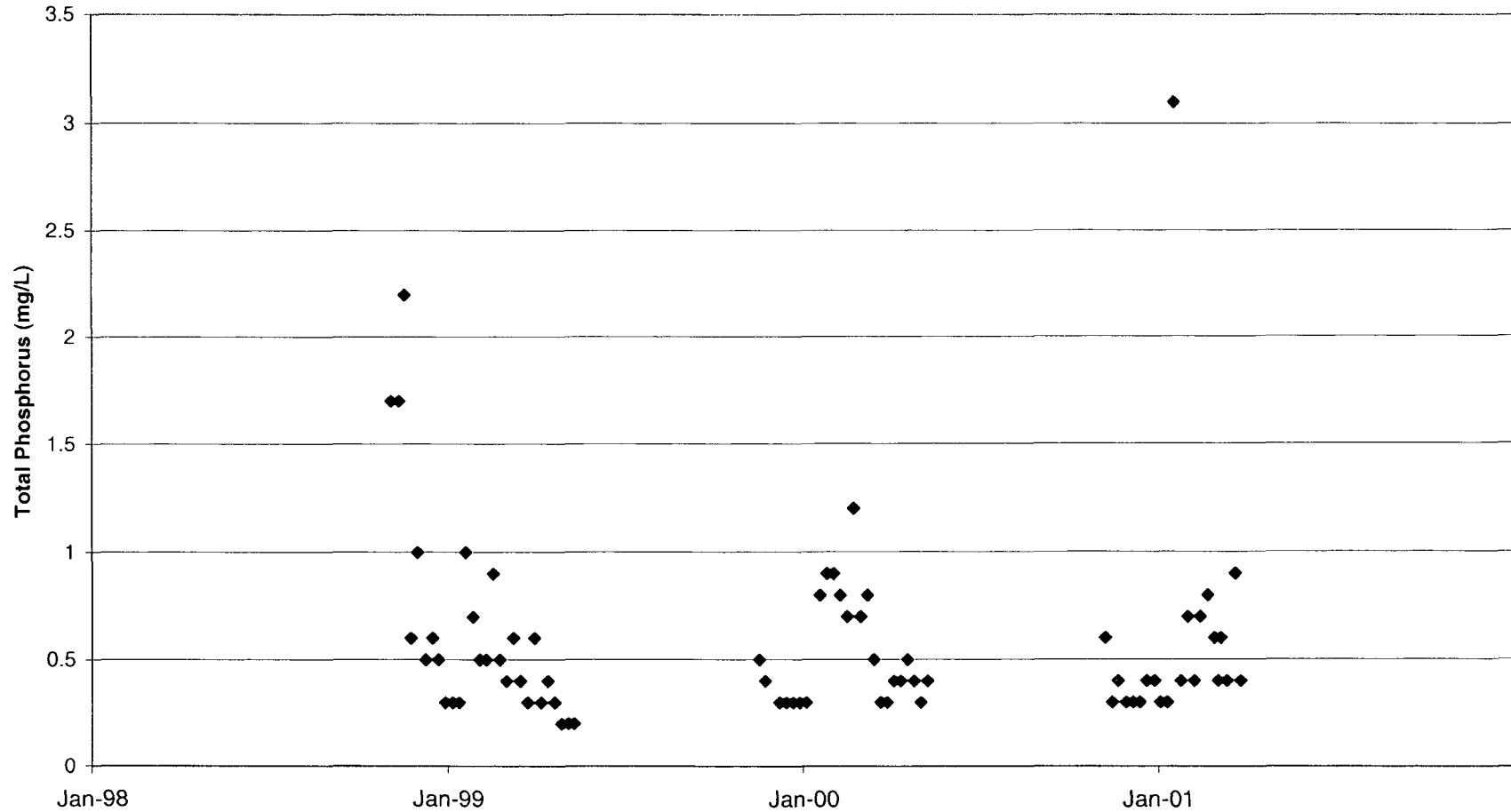
Laguna de Santa Rosa at Llano Road



Source: City of Santa Rosa monitoring data

City of Santa Rosa Subregional Water Treatment Facility
Total Phosphorus Monitoring, 1998 - 2001

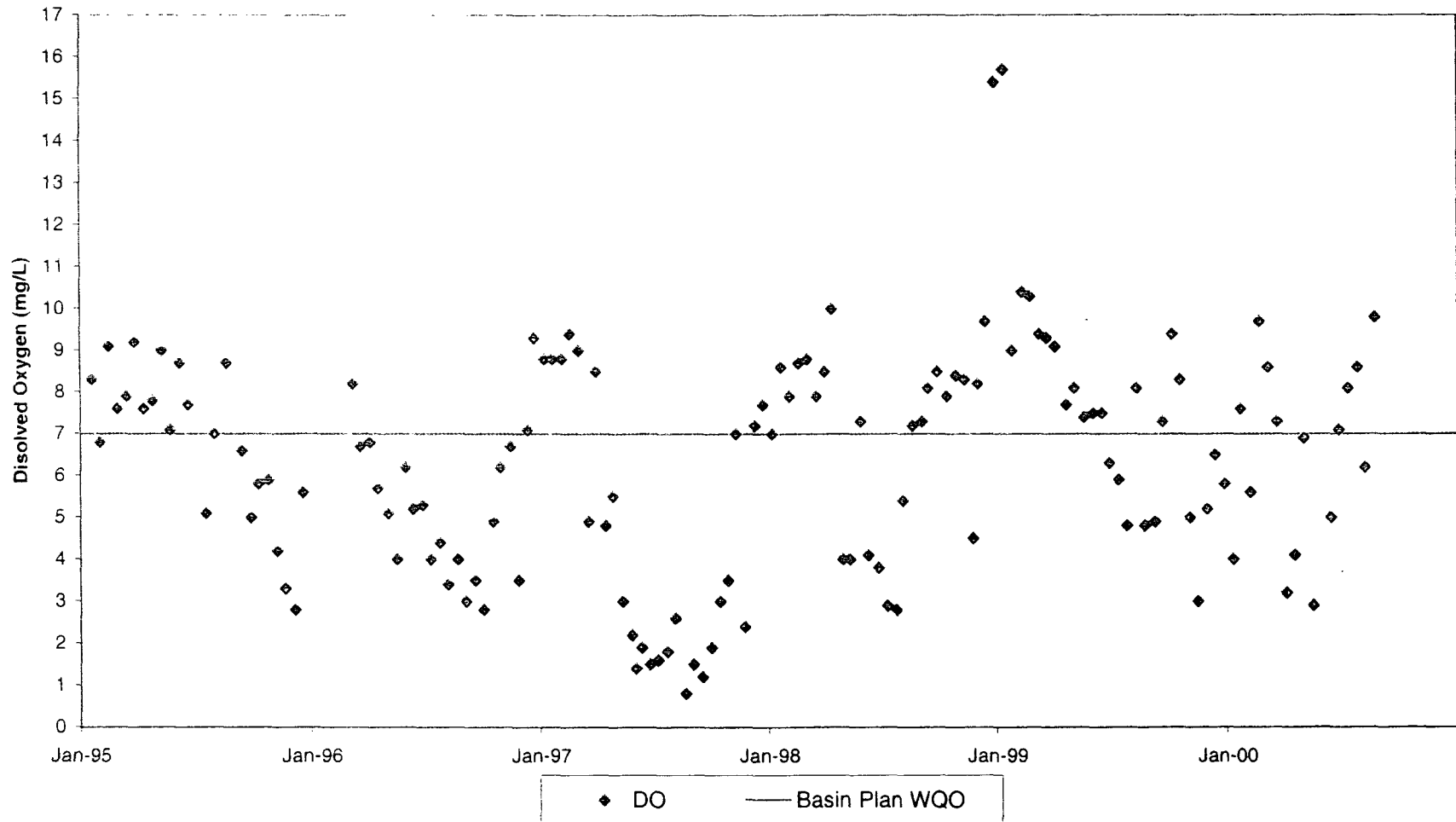
Laguna de Santa Rosa 100' upstream of Llano Road



Source: City of Santa Rosa monitoring data

Laguna de Santa Rosa Waste Reduction Strategy
Dissolved Oxygen Monitoring, 1995 - 2000

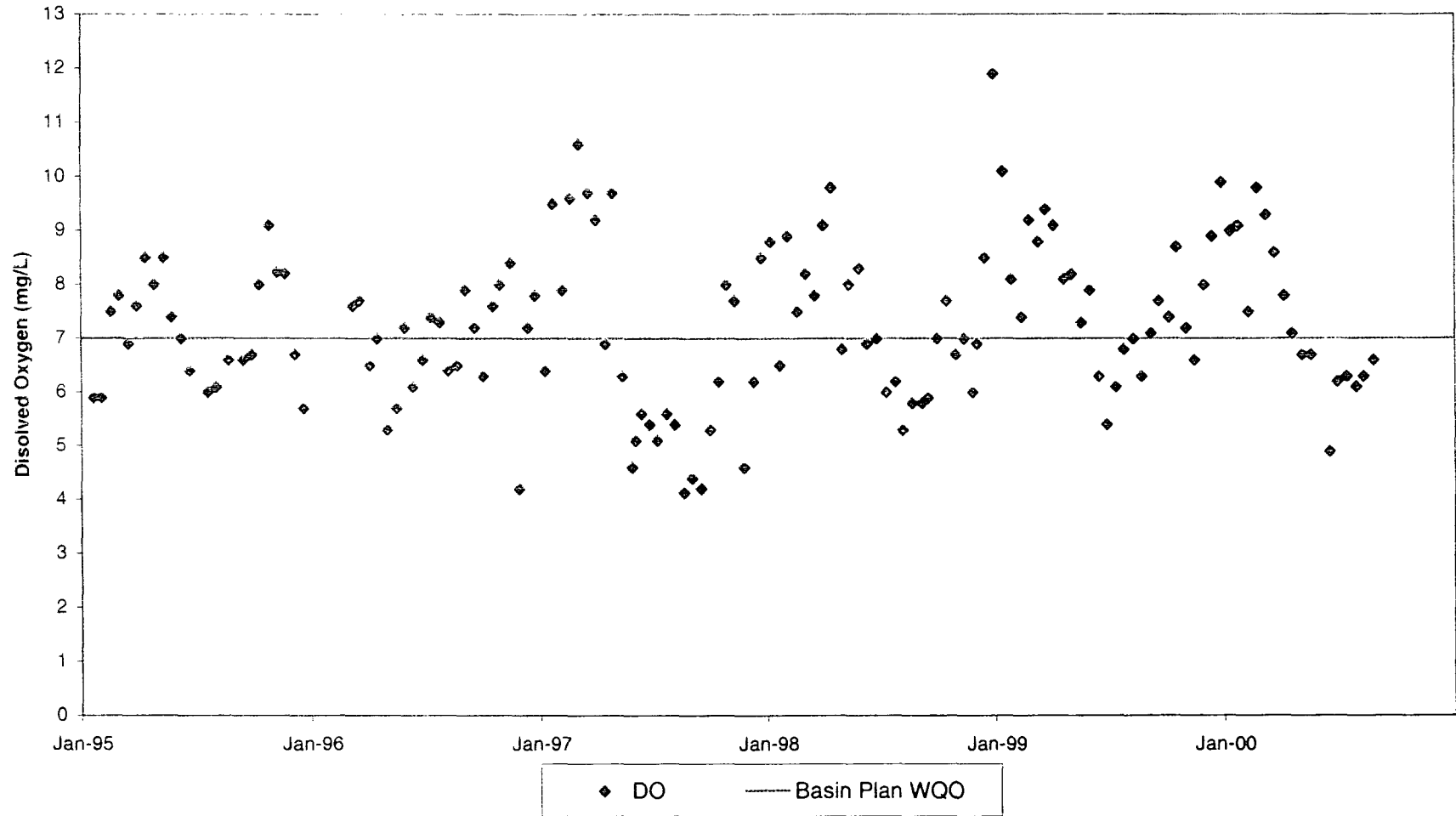
Laguna de Santa Rosa at Stony Point



Source: RWQCB Monitoring Data

Laguna de Santa Rosa Waste Reduction Strategy
Dissolved Oxygen Monitoring, 1995 - 2000

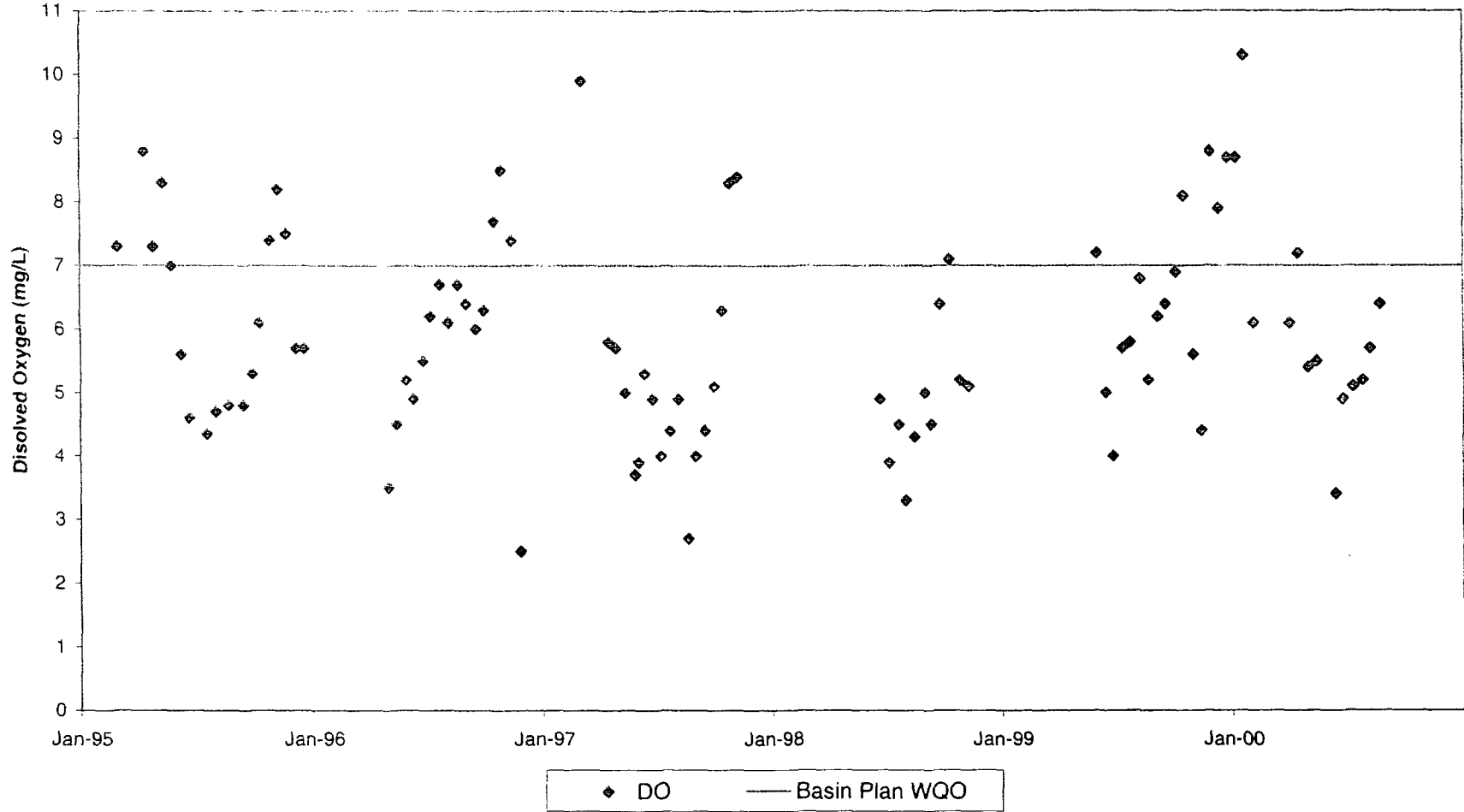
Laguna de Santa Rosa at Trenton Healdsburg



Source: RWQCB Monitoring Data

Laguna de Santa Rosa Waste Reduction Strategy
Dissolved Oxygen Monitoring, 1995 - 2000

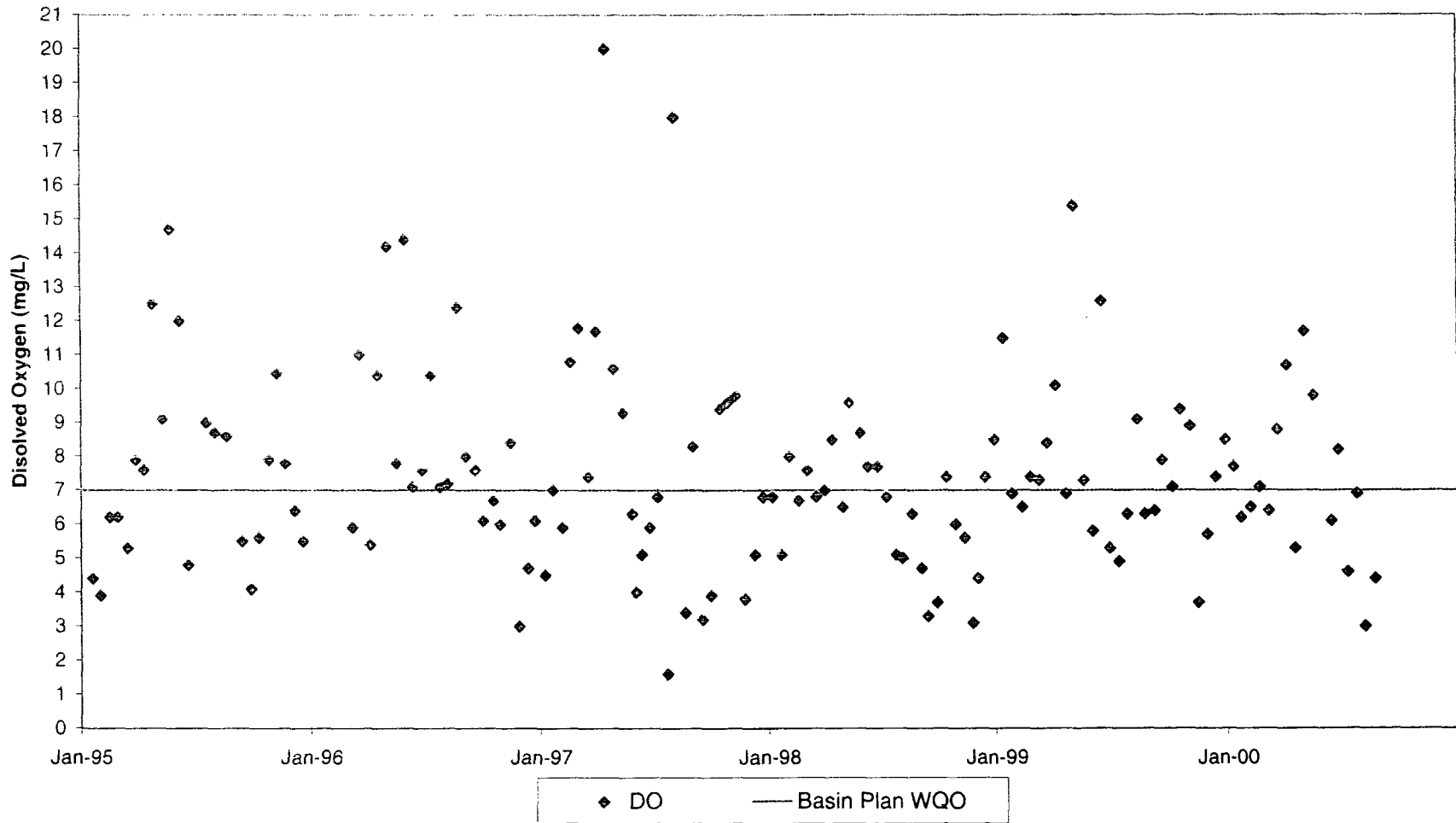
Laguna de Santa Rosa at Guerneville Road



Source: RWQCB Monitoring Data

Laguna de Santa Rosa Waste Reduction Strategy
Dissolved Oxygen Monitoring, 1995 - 2000

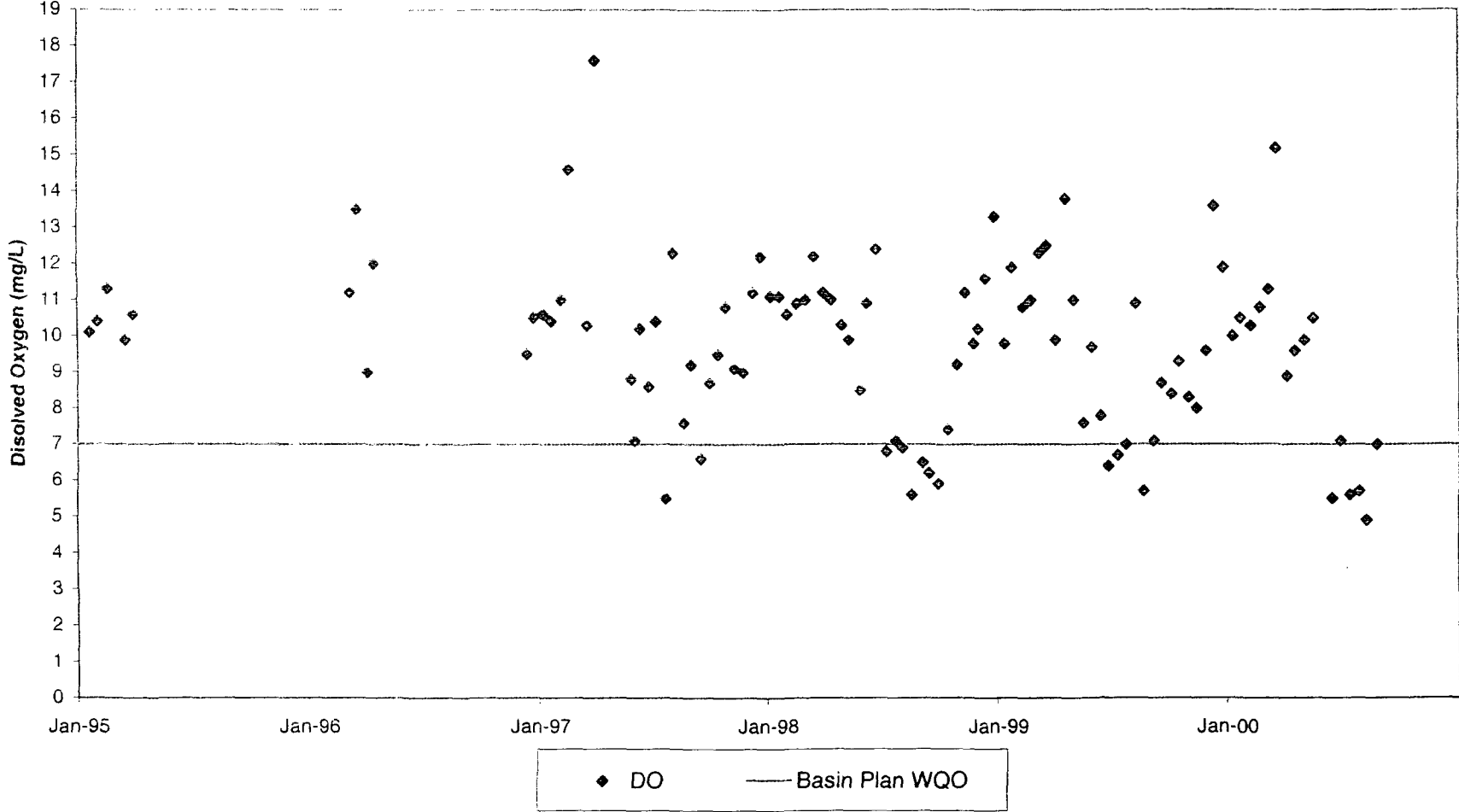
Laguna de Santa Rosa at Occidental Road



Source: RWQCB Monitoring Data

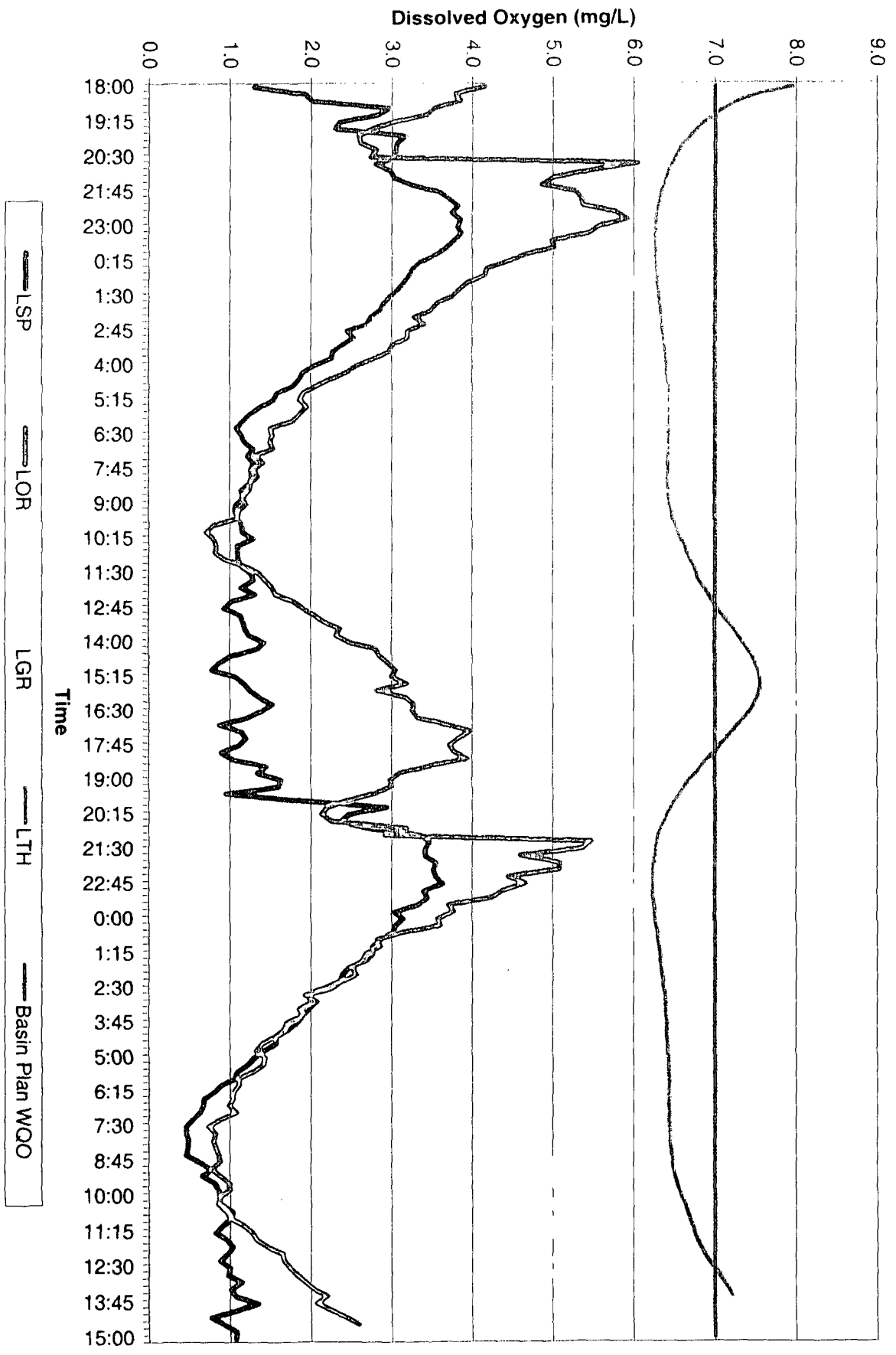
Laguna de Santa Rosa Waste Reduction Strategy
Dissolved Oxygen Monitoring, 1995 - 2000

Santa Rosa Creek at Willow Side Road



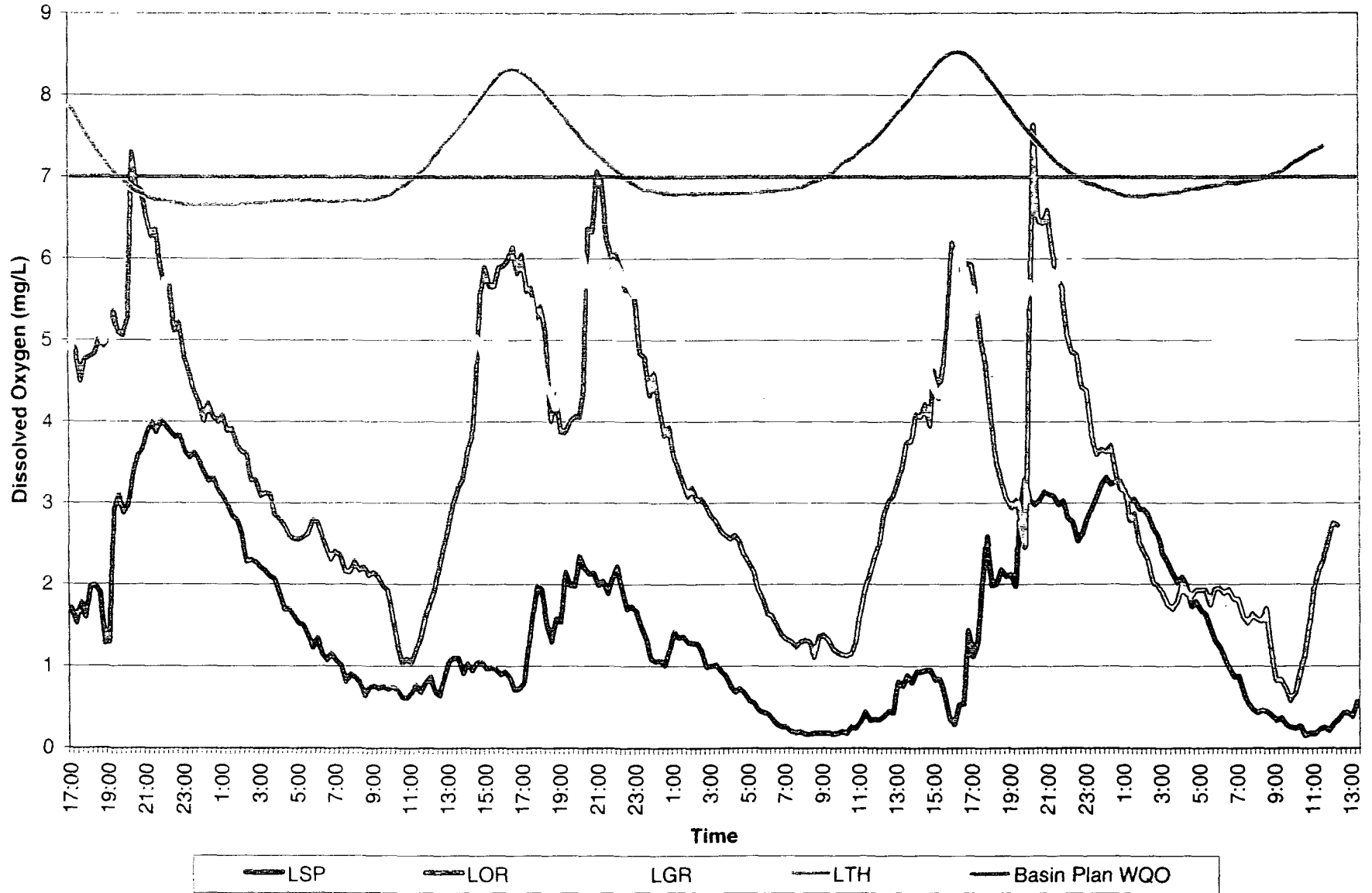
Source: RWQCB Monitoring Data

Laguna de Santa Rosa
Dissolved Oxygen Levels
August 1 - 3, 2001



Source: RWQCB Monitoring Data

Laguna de Santa Rosa
Dissolved Oxygen Levels
August 29 - September 1, 2001



Source: RWQCB Monitoring Data