



California Beach Closure Report 2000

July 2001

DIVISION OF WATER QUALITY
STATE WATER RESOURCES CONTROL BOARD
CALIFORNIA ENVIRONMENTAL PROTECTION AGENCY

TABLE OF CONTENTS

PAGE

INTRODUCTION	1
Significance of Beaches	1
Causes of Beach Closures	2
Sources of Beach Pollution	2
SWRCB's Role	2
Beach Closure, Beach Posting (Warning Sign), and Rain Advisory	4
Assembly Bill (AB) 411	5
Indicator Organisms	5
Beach-Mile-Day (BMD)	7
YEAR 2000 BEACH CLOSURE AND POSTING INFORMATION	9
Beach Warning Postings.....	9
Beach Closures	13
Rain Advisories	13
Data Evaluation	13
GOVERNOR'S CLEAN BEACH INITIATIVE AND.....	19
SWRCB'S IMPLEMENTATION PLAN	
APPENDIX – COUNTY REPORTS	21



LIST OF TABLES

	Page
1. Waterborne Pathogens, Diseases they Cause, and their Effects on Exposed Population.....3 (USEPA, 1999: Review of Potential Modeling Tools and Approaches to Support the BEACH Program)	
2. California Department of Health Services Bacterial Standards for Water-Contact.....8 sports	
3. Beach Warnings Posted in California by County--2000.....10	
4. Permanent Beach Postings in California by County--2000.....12	
5. Beach Closures in California by County--2000.....14	
6. Beach Rain Advisories in California by County--2000.....17	

LIST OF FIGURES

1. Decision Tree for Beach Postings and Closures (Proposed by the Monitoring and.....6 Reporting Subcommittee of the Beach Water Quality Workgroup)	
2. Sources of Contamination Resulting in Warnings Posted- -2000 (Based on Beach11 Mile-Days)	
3. Sources of Contamination Resulting in Beach Closures- -2000 (Based on Beach15 Mile-Days)	
4. Sources of Contamination Resulting in Warnings Posted and Closures.....16 Statewide- -2000 (Based on Beach Mile-Days)	

INTRODUCTION

California Health and Safety Code Section 115910 requires local health officers to submit to the State Water Resources Control Board (SWRCB) by 15th of each month a survey documenting all beach postings and closures that occurred during the preceding calendar year due to threats to the public health. The law also requires the SWRCB to (1) make available this information to the public by 30th of each month, (2) publish a statewide annual report documenting the beach posting and closure data provided by health officers for the preceding calendar year by July 30, and (3) distribute this report to the Governor, the Legislature, major media organizations, and public within 30 days of publication of the annual report.

The SWRCB staff enters the monthly beach posting and closure data provided by the local health officers on its website (<http://www.swrcb.ca.gov>) for easy public access. The coastal Regional Water Quality Control Boards (RWQCBs) also post this information on their websites or link to the SWRCB's website.

This annual beach closure report contains beach posting and closure information submitted by local health officers for the year 2000. It also includes a brief description of SWRCB and RWQCBs activities to keep the beaches clean and healthy.

Significance of Beaches

Various statistics have been reported regarding the economic significance of beaches. Nationwide, beaches contribute over \$640 billion (85 percent of all tourist revenues) to the United States economy annually. The U.S. Environmental Protection Agency (USEPA) estimates that Americans make a total of 910 million trips to coastal areas each year, spending about \$44 billions. According to the U.S. Lifeguard Association, beach usage in California is higher than the other 49 states combined. California's coastline is one of its most important natural features. It extends over 1,000 miles from the rocky cliffs of the north coast to the sandy, sun-drenched beaches in the south. Approximately 80 percent of California's 33 million residents live within a 30-mile drive of its coastline. The coastal areas represent a desirable place to live. Millions of visitors come to see its beauty and play on the shore and in its waters. Southern California beaches attract 175 million visitors each year, who spend more than \$1.5 billion during their visits. For instance, according to one estimate Mission Bay in San Diego County is visited each year by approximately three million people and creates over \$25 million in revenue for the County. On a typical summer day, some of the more popular beaches attract 75,000 people. On a statewide basis, California beaches generate \$17 billion per year in tourism revenue.

Increasingly the public is becoming concerned about beach closures, swimmers' illnesses, and the lack of public confidence due to the up and down nature of posting of warning signs. When a beach is closed due to contamination, the economic effect can be devastating to local business owners. Much attention has been given to the number of beach closures and warnings, especially along the southern California coast, which is a direct result of the very active beach water quality monitoring programs conducted primarily by county health agencies and municipal waste treatment facilities.

Causes of Beach Closures

Beaches are closed due to water contamination by toxic chemicals or pathogens, which can potentially impact the health of the beachgoers when they are exposed to the contaminated water through skin contact (swimming or surfing) or ingestion. Fever, flu-like symptoms, ear infection, respiratory illness, gastroenteritis, cryptosporidiosis, hepatitis, and other illnesses have been associated with waterborne pathogens. Table 1 lists a number of pathogenic bacteria, protozoa, and viruses; their observed effects on exposed population; and the diseases commonly associated with them. A 1996 epidemiological study sponsored by the Santa Monica Bay Restoration Project and partially funded by the SWRCB validated the cause and effect relationship between elevated levels of bacteria in beach water and health problems observed in exposed beachgoers. Beach closures can also result from other events, such as a leaking sewage pipe or an oil spill.

Sources of Beach Pollution

The ocean is the final deposition site for most land-based pollutants entering California's coastal watersheds. Nearshore pollution can result from dumping industrial waste, dredge spoils, agricultural and urban runoff, and municipal sewer discharges. Although this pollution has been controlled to a great extent in recent years, the increases in population and development offer a constant challenge to those agencies responsible for pollution control. As California's coastal population increases, the number and volume of discharges from industrial and municipal facilities into our coastal waters also increase.

Another primary source of coastal water pollution comes from the untreated runoff flowing from the land through storm drains and hundreds of natural stream courses. Runoff from creeks, rivers, and storm drains is a significant source of pollution to the southern California beaches. This runoff may come from roof tops, streets, yards, gardens, open spaces, parking lots, animal yards, construction sites, logging roads, and any other surface exposed to rain or snow. It collects animal waste, oil and rubber residue from cars, asbestos and metals from brake linings, pesticides, silt, and various types of vegetable matter. It may contain high bacterial counts and viruses, may be toxic to marine life, and may carry tons of garbage and silt that litter the ocean and its beaches and kill or injure marine life. Since this runoff does not come from a discrete source, such as a pipe, it is regarded as a "nonpoint source discharge." Some of these types of wastes are collected in urban storm drains. Storm drain discharges are considered "point source" under the federal Clean Water Act's Storm Water Program, and require National Pollutant Discharge Elimination System (NPDES) permits for discharges to surface waters.

SWRCB's Role

One of the SWRCB's primary responsibilities is to protect California's valuable coastal waters by controlling what goes into them. The six RWQCBs bordering the coastline also have primary responsibility for protecting coastal waters. Anyone wishing to discharge waste to the ocean from a pipe or waste facility (a "point source") must obtain an NPDES permit from the RWQCB. The RWQCBs establish monitoring programs to be conducted by the discharger as a way of measuring compliance with permit provisions. The RWQCBs currently issue NPDES permits for

Table 1. Waterborne Pathogens, Diseases they Cause, and their Effects on Exposed Population.

Pathogen		Disease	Effects
Bacteria	<u>Escherichia coli</u> (enteropathogenic)	Gastroenteritis	Vomiting, diarrhea, death in susceptible populations
	<u>Legionella pneumophila</u>	Legionellosis	Acute respiratory illness
	<u>Leptospira</u>	Leptospirosis	Jaundice, fever (Weil's disease)
	<u>Salmonella typhi</u>	Typhoid fever	High fever, diarrhea, ulceration of the small intestine
	<u>Salmonella</u>	Salmonellosis	Diarrhea, dehydration
	<u>Shigella</u>	Shigellosis	Bacillary dysentery
	<u>Vibrio cholerae</u>	Cholera	Extremely heavy diarrhea, dehydration
	<u>Yersinia enterocolitica</u>	Yersiniosis	Diarrhea
Protozoans	<u>Balantidium coli</u>	Balantidiasis	Diarrhea, dysentery
	<u>Cryptosporidium</u>	Cryptosporidiosis	Diarrhea
	<u>Entamoeba histolytica</u>	Amebiasis (amoebic dysentery)	Prolonged diarrhea with bleeding, abscesses of the liver and small intestine
	<u>Giardia lamblia</u>	Giardiasis	Mild to severe diarrhea, nausea, indigestion
	<u>Naegleria fowleri</u>	Amoebic meningoencephalitis	Fatal disease; inflammation of the brain
Viruses	Adenovirus (31 types)	Respiratory disease	
	Enterovirus (67 types, e.g., polio, echo, and Coxsackie viruses)	Gastroenteritis	Heart anomalies, meningitis
	Hepatitis A	Infectious hepatitis	Jaundice, fever
	Norwalk agent	Gastroenteritis	Vomiting, diarrhea
	Reovirus	Gastroenteritis	Vomiting, diarrhea
	Rotavirus	Gastroenteritis	Vomiting, diarrhea

discharges from municipal storm sewer systems serving a population of 100,000 or more. The SWRCB has also adopted two statewide general storm water permits for industrial and construction activities and a statewide permit to address all road construction activities of the California Department of Transportation. These permits require the storm water dischargers to implement programs to reduce and/or eliminate storm water pollution to the maximum extent possible. If nonpoint source waste causes serious pollution, the RWQCBs may work with the dischargers to require the application of measures to control the waste (known as best management practices or BMPs) and prevent pollution. If those measures are not carried out effectively, the RWQCBs may issue waste discharge permits or take enforcement action.

Beach Closure, Beach Posting (Warning Sign), and Rain Advisory

County health officers can take three discrete actions based on beach water quality monitoring data, sewage spills, and storm events. Beaches, or more precisely the ocean waters adjacent to the beaches, are posted with warning signs or are closed when certain kinds of indicator bacteria are found in the water at levels that are considered a problem. These indicator bacteria imply the potential presence of microscopic disease-causing organisms originating from human and animal wastes. Water samples are collected in the surf zone to determine if recreational waters are contaminated with indicator bacteria (total coliform, fecal coliform, and enterococci). If tests using indicator bacteria show levels above State standards (Table 2), the beach will be posted with warning signs or closure notices to notify the public of the potential health risk. The beach is reopened when further sampling confirms that the density of bacteria in water does not exceed the State standards.

A "Beach (ocean) Closure" occurs as a result of a sewage spill or repeated incidences of exceedences of bacterial standards from an unknown source. A closure is a notice to the public that the water is unsafe for contact and that there is a high risk of getting ill from swimming in the water. Closure occurs when health risks are considered greater than those associated with posting that some evidence of monitoring indicates a problem. A beach closure does not result in the closure of the entire beach for recreational activities. In most cases, the ocean is closed to swimming and other water contact recreation while the beach area is open for sunbathing, volleyball, and other activities that do not involve water contact.

A "Beach Warning" sign means that at least one bacterial standard has been exceeded, but there is no known source of human sewage. The posting of warning signs alerts the public of a possible risk of illness associated with water contact. The placement of signs may be short term when a single bacterial indicator standard is exceeded or more permanent where monitoring indicates repeated contamination (e.g., from a storm drain). Warnings may also be posted where sources of contamination are identifiable and can be explained as not of human origin (e.g., resident marine mammals or seabirds).

A "Rain Advisory" is often issued when it rains because it is known from past experience that rainwater carries pollution to the beach. After a rain, indicator bacteria counts usually exceed the State standards for recreational water use. For this reason, county health officials usually recommend that beach users should not swim or surf during rain and three days after a rainstorm. Rain advisories are issued by radio or newspaper during rainstorms to warn people to avoid areas where rainwater flows onto the beach and may not be based on the actual evidence of contamination.

Assembly Bill (AB) 411

Pursuant to AB 411 (Wayne, Chapter 765, Statutes of 1997), DHS adopted procedures that increased consistency in the way county agencies measure beach water quality, post warnings, and close beaches (Sections 115880, 115885, and 115915 of the Health and Safety Code). Beginning in 1999, the law required local health officers to conduct weekly bacterial testing (total coliform, fecal coliform, and enterococci bacteria) between April 1 and October 31 of waters adjacent to public beaches which have more than 50,000 visitors annually and are near storm drains which flow in the summer. If any one of these indicator organisms exceeds the DHS standard (Table 2), the county health officer is required to post warning signs at the beach and make a determination whether to close that beach in the case of extended exceedences. The law also requires the county health officer to establish a telephone hotline to inform the public of all beaches that are closed, posted, or otherwise restricted. Ten coastal counties (San Mateo, Sonoma, Santa Cruz, Monterey, San Luis Obispo, Santa Barbara, Ventura, Orange, Los Angeles, and San Diego) and one city (Long Beach) have reported that they have beaches that meet the AB 411 criteria, i.e., beaches that are near storm drains and are visited by more than 50,000 people annually.

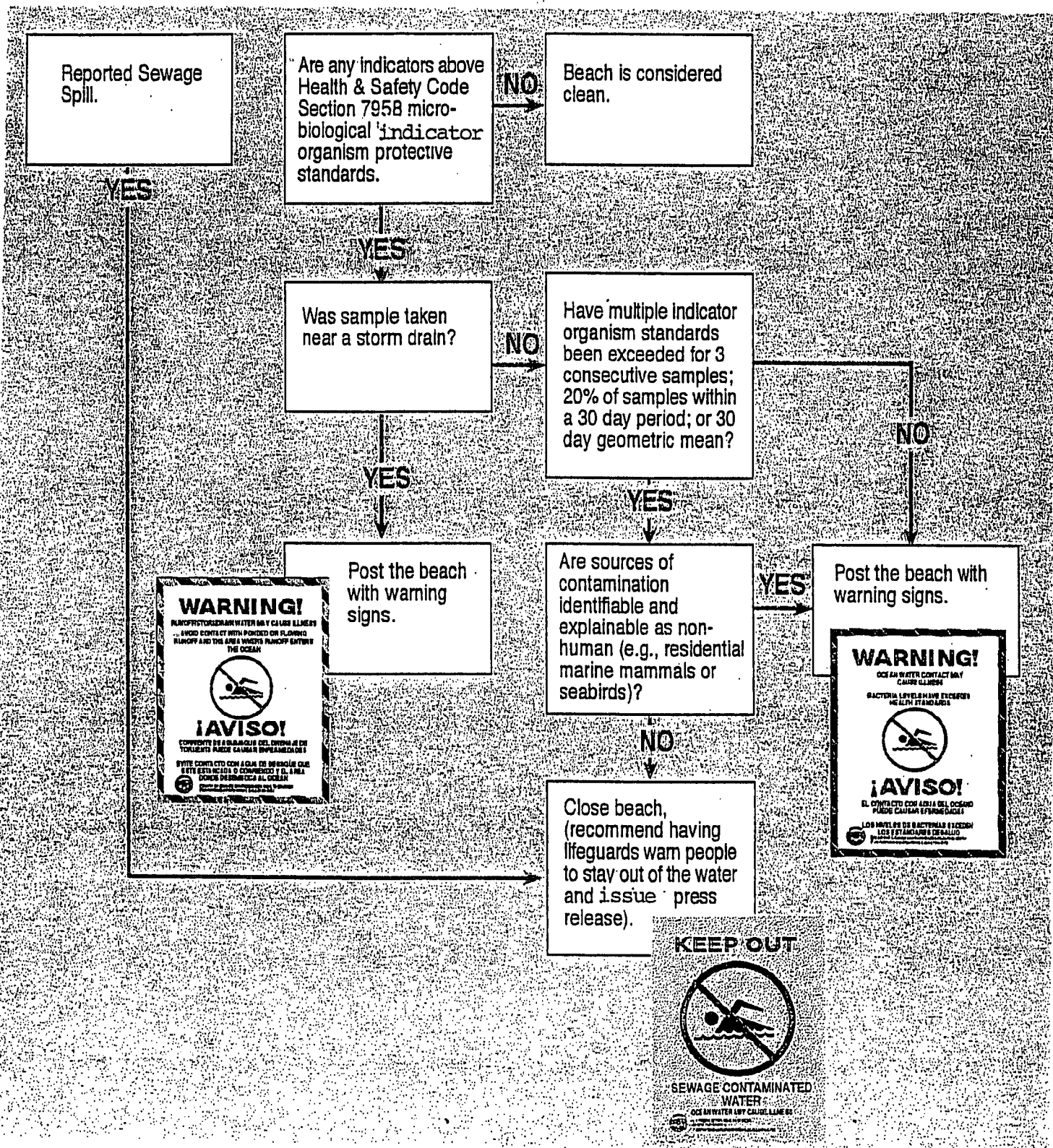
Before AB 411 became law, county health officers had discretion to post or close any beach that violated total coliform standards. Under the new regulations, county health officers are required to post warnings whenever any one of the bacterial standards is violated in areas near storm drains, but they have the discretion to close the beach when appropriate. Many beaches near storm drains (which are covered under the AB 411 regulations) frequently violate at least one of the standards established by the DHS. These violations increase the number of postings regardless of whether there have been changes in water quality from previous years. Information collected under the mandate of AB 411 provides a new baseline against which the number of future beach warning postings and closures could be compared.

Figure 1 shows a suggested protocol for posting and closure based on the results of bacterial monitoring or reported sewage spill. This protocol was developed by the Monitoring and Reporting Subcommittee of the Beach Water Quality Workgroup, an ad-hoc committee of State, federal, and local agency representatives and environmental groups that have a stake in beach water quality programs. The decision tree provides guidance to the county health staff on whether a beach should be posted or closed. AB 411 specifies when to post or close a beach which has input from storm drains. However, there is discretion for posting or closure of beaches in areas away from the influence of storm drains. The key to this discretionary action is whether the county health staff is confident that high levels of bacterial indicators will be detected on a repeated basis (leading to beach closure) or not (leading to beach posting).

Indicator Organisms

Since identification and enumeration of pathogens, such as viruses in water, are difficult, time consuming, and expensive laboratory methods have been developed to measure the presence and density of "indicator" organisms. The indicator organisms may not cause human health impacts, but their presence indicates the potential for water contamination with other pathogens that are harmful, such as bacteria, viruses and protozoa. Indicator bacteria are carried to coastal waters in

Figure 1. Decision Tree for Beach Postings and Closures (Proposed by the Monitoring and Reporting Subcommittee of the Beach Water Quality Workgroup)



a variety of ways. Bacteria typically enter coastal waters from sewage spills; overflows of sewage-treatment plants and sanitary sewers; and storm water runoff from urban, suburban, and rural areas. An ideal indicator would be found only when disease-causing agents were present at densities that could cause problems. Since the coliform bacteria group (total, fecal, *E. coli* and enterococci) is found in the intestines and feces of warm-blooded animals, their presence indicates that pathogens from untreated or partially treated sewage or contaminated runoff may be present in water. Other advantages of using coliform bacteria group as indicator organisms include: (1) they are easily detected by simple laboratory methods; (2) they are not usually present in unpolluted waters; (3) their concentration in water can be correlated with the extent of contamination; and (4) they are safe to work with in the laboratory.

In 1967, USEPA recommended a fecal coliform water quality criterion for protection of human health. The criterion recommended that the maximum density of fecal coliform not exceed the geometric mean of 200 organisms per 100 milliliter (ml) in recreational waters. Again in 1986, USEPA issued more criteria for bathing (full body contact) in recreational waters based on *E. coli* and enterococci. In fresh waters, the geometric mean of bacterial densities should not exceed 126 per 100 ml for *E. coli*, or 33 per 100 ml for enterococci. For marine waters, the geometric mean of enterococci should not exceed 35 per 100 ml.

Table 2 presents the California Department of Health Services (DHS) bacterial standards for water-contact sports. The standards are for total coliform, fecal coliform, and enterococci for a single sample or for a 30-day log mean basis. Further, the ratio of total to fecal coliform should not exceed 10 ml when the total coliform density is more than 1,000 ml.

The current indicators are not very precise to assess human health impacts. Rather, these bacteria are produced by many types of animals, and they represent a range of potential risks of disease. For example, birds using wetland areas can excrete indicator bacteria in densities that would suggest a potential risk to human health. However, birds do not carry the same types of pathogens as people. The risk of illness to people is assumed to be lower when the indicator bacteria come from animals instead of humans. Further research is needed in this area.

Beach Mile-Day (BMD)

The BMD is a measure of beach availability for recreation per year. It is a product of the number of miles of coastline and 365 days (the number of days the beach may be available for recreation in California). For instance, if a county has 50 miles of open coast, bay, and harbor beaches, it has 18,250 BMDs available (50×365). However, if 15 miles of the beach are closed or posted for 10 days, then 150 BMDs are not available for recreation resulting in 0.8 percent beach impairment ($150/18250 \times 100$). In other words, 99.2 percent of beach usage met the standards.

The BMD is a useful measure for comparing the health of beaches from year to year. The comparison is how much of the year's BMDs has been impaired in a particular county. It is a more meaningful measure of comparison than the number of incidences or the number of days of postings or closures.

Table 2. California Department of Health Services		
Bacterial Standards for Water-- Contact Sports		
Sample Type	Bacteria	Standard
		(Organism or Colony forming unit per 100 ml of water)
Single		
	Total Coliform	10,000
	Fecal Coliform	400
	Enterococci	104
	Total to fecal Coliform ratio (when total is 1,000)	10
30-day log mean		
	Total Coliform	1,000
	Fecal Coliform	200
	Enterococci	35

County of Sonoma Division of Environmental Health - Beach Closures for 2001

BeachName	Date Closed	Date Opened	Days Closed	Beach Mile Days	Cause	Source
Campbell Cove State Beach	9/12/01	9/28/01	16	1.60	unknown	Unknown
	10/10/01	10/31/01	21	2.10	Unknown	Unknown

Number of Closures: 2

Sum of Days: 37

Sum of Beach Mile Days: 3.7

San Mateo County Environmental Health - Beach Warnings Posted for 2001

BeachName	Date Posted	Date Opened	Days Posted	Beach Mile Days	Cause	Source
Fitzgerald Marine Reserve	8/20/01	8/23/01	3	0.85	Unknown Cause	Creeks/Rivers
	12/20/01	12/21/01	1	0.28	Unknown Cause	Creeks/Rivers
Pacifica State Beach (San Pedro Beach)	3/6/01	3/9/01	3	0.85	Unknown Cause	Creeks/Rivers
	6/12/01	6/19/01	7	0.40	Unknown Cause	Creeks/Rivers
	12/20/01	12/31/01	11	3.13	Unknown Cause	Creeks/Rivers
Pescadero State Beach	3/6/01	3/13/01	7	21.00	Unknown Cause	Creeks/Rivers
Pillar Point	1/8/01	12/31/01	357	35.70	Unknown Cause	Creeks/Rivers
	7/31/01	8/2/01	2	0.23		
Pillar Point 2	1/8/01	1/17/01	9	2.56	Unknown Cause	Creeks/Rivers
	1/9/01	1/17/01	8	4.55	Rain	Creeks/Rivers
	2/21/01	2/27/01	6	1.70	Unknown Cause	Creeks/Rivers
	3/6/01	3/13/01	7	1.99	Unknown Cause	Creeks/Rivers

BeachName	Date Posted	Date Opened	Days Posted	Beach Mile Days	Cause	Source
Pomponio State Beach	3/6/01	3/13/01	7	7.00	Unknown Cause	Creeks/Rivers
Poplar Beach	4/9/01	4/17/01	8	4.55	Unknown Cause	Creeks/Rivers
San Gregorio State Beach	3/6/01	3/13/01	7	3.98	Unknown Cause	Creeks/Rivers
Surfer's Beach	7/31/01	8/2/01	2	0.28	Unknown Cause	
Venice Beach	3/6/01	3/13/01	7	3.98	Unknown Cause	Creeks/Rivers
	12/20/01	12/26/01	6	1.70	Unknown Cause	Creeks/Rivers

Number of Postings: 18

Sum of Days: 458

Sum of Beach Mile Days: 94.7

YEAR 2000 BEACH CLOSURE AND POSTING INFORMATION

The information presented in this report is derived from SWRCB's Beach Closure/Posted Warning Database which identifies the beach name and the extent of closures and posted warnings in miles (or yards). This database makes it possible to report beach postings and closures by BMDs. Detailed county reports on individual posted warnings, beach closures, and rain advisories for year 2000 are included in the Appendix of this report in geographical order of counties starting from the north of the State to the south. At the end of each individual county report, the total sum of the incidences of posted warnings/beach closures/rain advisories, days (duration), and BMDs are specified. Each time a portion of a beach was posted or closed, the event was counted as a day. The number of days of posted warnings or closures are mentioned to indicate the magnitude of the posting/closure events.

Beach Warning Postings

Table 3 presents the data on beach warnings posted during year 2000 from the City of Long Beach and 11 counties, ten of which (Sonoma, San Mateo, Santa Cruz, Monterey, San Luis Obispo, Santa Barbara, Ventura, Los Angeles, Orange, and San Diego) meet the reporting AB 411 requirement criteria as mentioned previously. San Francisco County also reported these data although the County is not required to do so pursuant to AB 411. The coastal counties of Del Norte, Humboldt, Marin, Contra Costa, and Alameda did not have a monitoring program since these counties do not have beaches that meet the AB 411 criteria. Mendocino County on the other hand reported no posting of beach warnings during year 2000. On a statewide basis, 1,285 beach warnings were posted lasting for a total of 8,133 days. This resulted in approximately 1,100 BMDs of posting. Los Angeles County had the maximum number of incidences (325), and San Diego County had the maximum number of days of postings (2,450). Orange County had the maximum number of BMDs posted (about 596). These three counties along with the County of Santa Barbara and the City of Long Beach accounted for over 85 percent of the posting data. The primary cause of the bacterial contamination leading to postings was either unknown or rainfall resulting in storm events.

Figure 2 shows that statewide the source of 35 percent of all BMDs with warnings posted was contamination carried to the beach through creeks/streams, and 18 percent was through storm drains and urban runoff. The source was unknown for 42 percent of the BMDs with posted warnings.

Six counties (San Mateo, Santa Cruz, Ventura, Los Angeles, Orange, and San Diego) reported permanent beach postings at certain beaches (Table 4). The majority of these permanent postings are due to storm drains or creeks/rivermouths that enter the ocean. Some counties do not opt for permanent postings at beaches near storm drains if the drains are seasonal. Since there is no uniform reporting system of permanent beach postings among the counties, these data are not included in the beach posting data. SWRCB staff is working with county health staff to improve the reporting system for this category. This is the first time the permanent beach postings are presented in the Beach Closure Report.

As a precautionary measure, people should never swim or surf within 100 yards of any posted storm drain or creek/rivermouth.

Table 3. Beach Warnings Posted in California By County--2000

County	Number of Incidences	Number of Days	Beach Mile-Day Posted	Primary Cause(s)
Del Norte	NM*			
Humboldt	NM			
Mendocino	NP**			
Sonoma	12	29	2.7	Rain, Unknown
Marin	NM			
San Francisco	13	31	49	Rain
Contra Costa	NM			
Alameda	NM			
San Mateo	17	387	21.5	Unknown
Santa Cruz	7	44	19.8	Unknown
Monterey	16	42	13.8	Unknown
San Luis Obispo	6	16	2.2	Rain
Santa Barbara	152	1,296	73.5	Rain, Unknown
Ventura	72	237	13.4	Unknown
Los Angeles	325	1,150	126.1	Unknown
Long Beach (City)	99	161	4.6	Unknown
Orange	290	2,055	595.8	Unknown
San Diego	274	2,450	168.9	Bacteria Levels Exceed Standards
TOTAL	1,283	7,898	1,091.3	

* No monitoring

** No postings

**Figure 2. Sources of Contamination Resulting in Warnings
Posted--2000
(Based on Beach Mile-Days)**

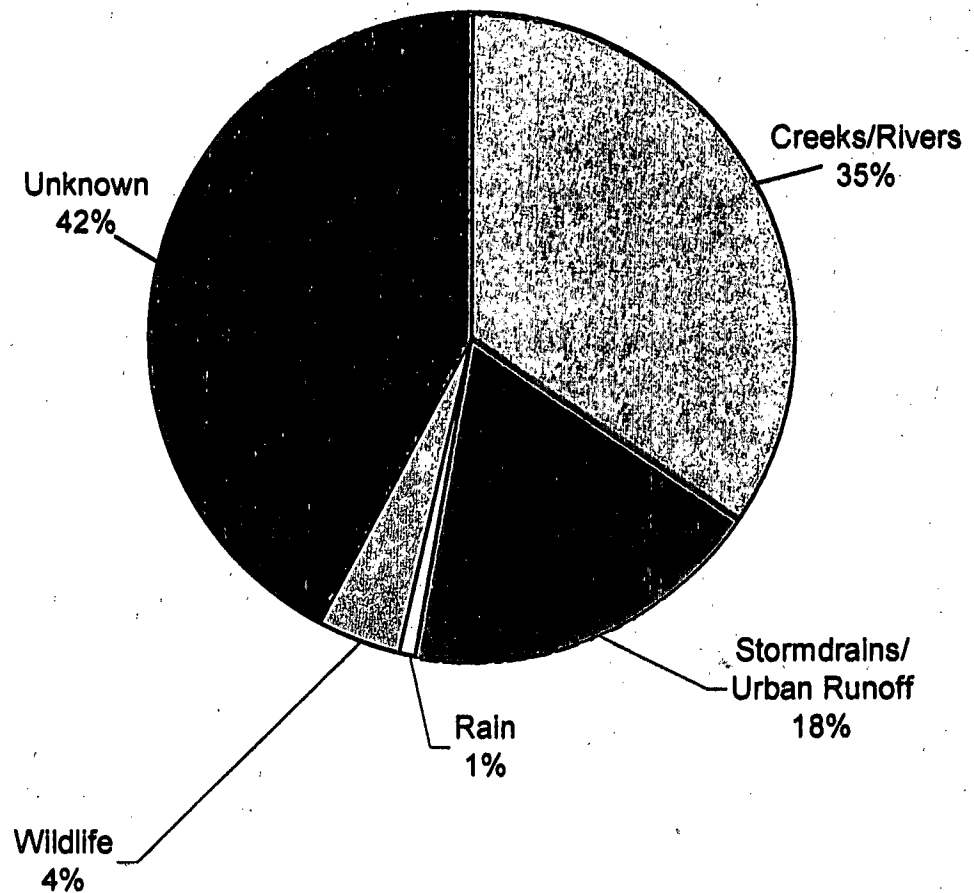


Table 4. Permanent Beach Postings By County--2000

County	Permanent Postings
San Mateo	Half Moon Bay @ San Pedro Creek
	Half Moon Bay @ San Vicinidi Creek
Santa Cruz	Monterey Bay @ San Lorenzo Rivermouth
	Twin Lakes Beach @ Schwan Lagoon
	Capitola Beach @ Soquel Creek
	Rio Del Marr Beach @ Aptos Creek
	Cowell Beach @ Neary Lagoon
Ventura	Rincon Parkway North
	Faria County Park
	Solimar Beach (Cypress Tree)
	Surfer's Point (Mouth of Ventura River)
	Promenade Park @ Figueroa St., Redwood Apts., Oak St., & California St.
	San Buenaventura State Beach @ Karlorama St. San Jon St., Dover Lane, Weymouth Lane
	McGrath State Beach @ McGrath Lake Drain
	Oxnard State Beach @ Falkirk Ave
	Channel Islands Harbor Beach Park @ Kiddie Beach
	Ormond Beach @ Oxnard Industrial Drain
	Sycamore Cove Beach
	County Line Beach
Los Angeles	Santa Monica Canyon Creek
Orange	Dana Point Harbor @ North side of the East Basin at K-O Docks
	Newport Bay @ Harbor Marina, 33rd St. Channel, & 43rd St. Beach
	Sea Beach/Surfside @ San Gabriel River
	Huntington City Beach @ Storm Drains 1st St., 7th St., 13th. St., and 23rd St.
	Huntington State Beach @ Talbert Channel and Santa Ana River
	Newport Beach @ Santa Ana River and Buck Gully
	Crystal Cove State Park @ Pelican Point Creek, Waterfall Creek, Los Francos Creek, Muddy Creek, & El Moro Creek
	Emerald Bay @ Emerald Bay Drain
	Laguna Beach @ Broadway Creek
	Laguna Beach @ Storm Drains at Heisler Park, Cleo St., Bluebird Canyon, Dumond St., Lagunita/Blue Lagoon, South Coast Highway at Hospital, Thalia St., Oak St., Irvine Cove, Crescent Bay, Laguna Ave., Ocean Way, West St., & Table Rock Circle
	Aliso Beach @ Aliso Creek
	1000 Steps County Beach @ 1000 Steps Drain
	Monarch Beach @ Salt Creek
	Salt Creek Beach @ Dana Strand and Salt Creek Service Rd.
	Doheny State Beach Park @ North Beach and San Juan Creek
	Capistrano County Beach @ Capo Beach Storm Drain
	Poche Beach @ Poche Drain
	San Clemente City Beach @ Storm Drains at Pico, Lifeguard Headquarters, under pier, El Portal stairs, Mariposa Linda Lane, South Linda Lane, Trafalgar Canyon, La Ladrea, Riveria Beach, Salem Tressel, & Cypress Shores
San Diego	La Jolla Community Beach @ Casa Beach Children's Pool

Beach Closures

Table 5 presents the calendar year 2000 beach closure data from nine coastal counties. The Counties of Del Norte, Humboldt, Marin, Contra Costa, and Alameda had no monitoring programs. The counties of San Francisco, Santa Cruz, and Santa Barbara along with the City of Long Beach reported no beach closures. There was a total of 117 incidences of beach closures which lasted for 772 days statewide. Approximately 324 BMDs were closed in the State in 2000. San Diego County had the maximum number of closures reported--47 beach closures, 310 beach closure days, and 187 BMDs closed. This County accounted for over 40 percent of the total number of beach closure incidences and days and over 50 percent of BMDs closed statewide. The primary causes of the beach closures were sewer line overflow, breakage, and blockage.

Figure 3 shows that statewide creeks/rivers and sewer lines accounted for almost all the BMDs of closures. It should be noted that counties are not specific and consistent in their reporting of the sources and causes of beach closures. Some counties may report sewer lines as source of beach closures while others may report them as the cause of beach closures. In either case, problems with sewer lines, such as line breaks, blockages due to grease, roots, or rocks, and pump failure, have led to a significant number of beach closures.

Figure 4 shows the contribution of pollution sources when beach postings and closures are combined. Creeks/rivers account for 37 percent, sewer lines and storm drains/urban runoff account for 12 percent each, and the cause for beach posting or closure is unknown for a little over one-third of the cases (37 percent).

Rain Advisories

Six counties (Monterey, Santa Barbara, Ventura, Los Angeles, Orange, and San Diego) reported issuing a total of 129 rain advisories during year 2000, lasting for a total of 737 days (Table 6). Ventura County has the highest number of rain advisories (103) and the duration (571 days). This is a result of different reporting methods used by counties. Ventura County reported a separate rain advisory for each beach in the County, while the other counties reported the number of rain advisories that are issued for all beaches in the counties.

Data Evaluation

California beaches have the most stringent set of public health standards, and they are monitored more than anywhere in the nation. For these reasons, there are more beaches posted or closed in California than anywhere else. The year 2000 beach posting and closure data are not comparable with the year 1999 data set. Since the AB 411 regulations were not officially adopted until July 1999, the beach posting and closure data included in the SWRCB's year 1999 Beach Closure Report did not cover the entire testing period required by law. Consequently, there were only over 5,000 days of postings and closures during 1999 compared to over 8,000 days in year 2000. This should not be interpreted as a worsening trend in beach water quality. As the monitoring baseline is improved, the data will be comparable and will be able to demonstrate the trend.

Table 5. Beach Closures in California By County--2000				
County	Number of Incidences	Number of Days	Beach Mile- Day Closed	Primary Cause(s)
Del Norte	NM*			
Humboldt	NM			
Mendocino	1	15	2.6	Sewer Main Break
Sonoma	2	4	0.4	Unknown, Other
Marin	NM			
San Francisco	NC**			
Contra Costa	NM			
Alameda	NM			
San Mateo	9	217	41.9	Rain
Santa Cruz	NC			
Monterey	6	16	3.9	Line Break, Sewer Manhole Overflow
San Luis Obispo	1	1	0.1	Sewer Overflow at Residence
Santa Barbara	NM			
Ventura	4	12	0.7	Blockage
Los Angeles	7	45	33.6	Sewer Main Break, Blockage due to different sources
Long Beach (City)	NM			
Orange	40	152	53.4	Blockage due to different causes
San Diego	47	310	187	Sewage
TOTAL	117	772	323.6	

* No monitoring

** No closures

Figure 3. Sources of Contamination Resulting in Beach Closures--2000.
(Based on Beach Mile Days)

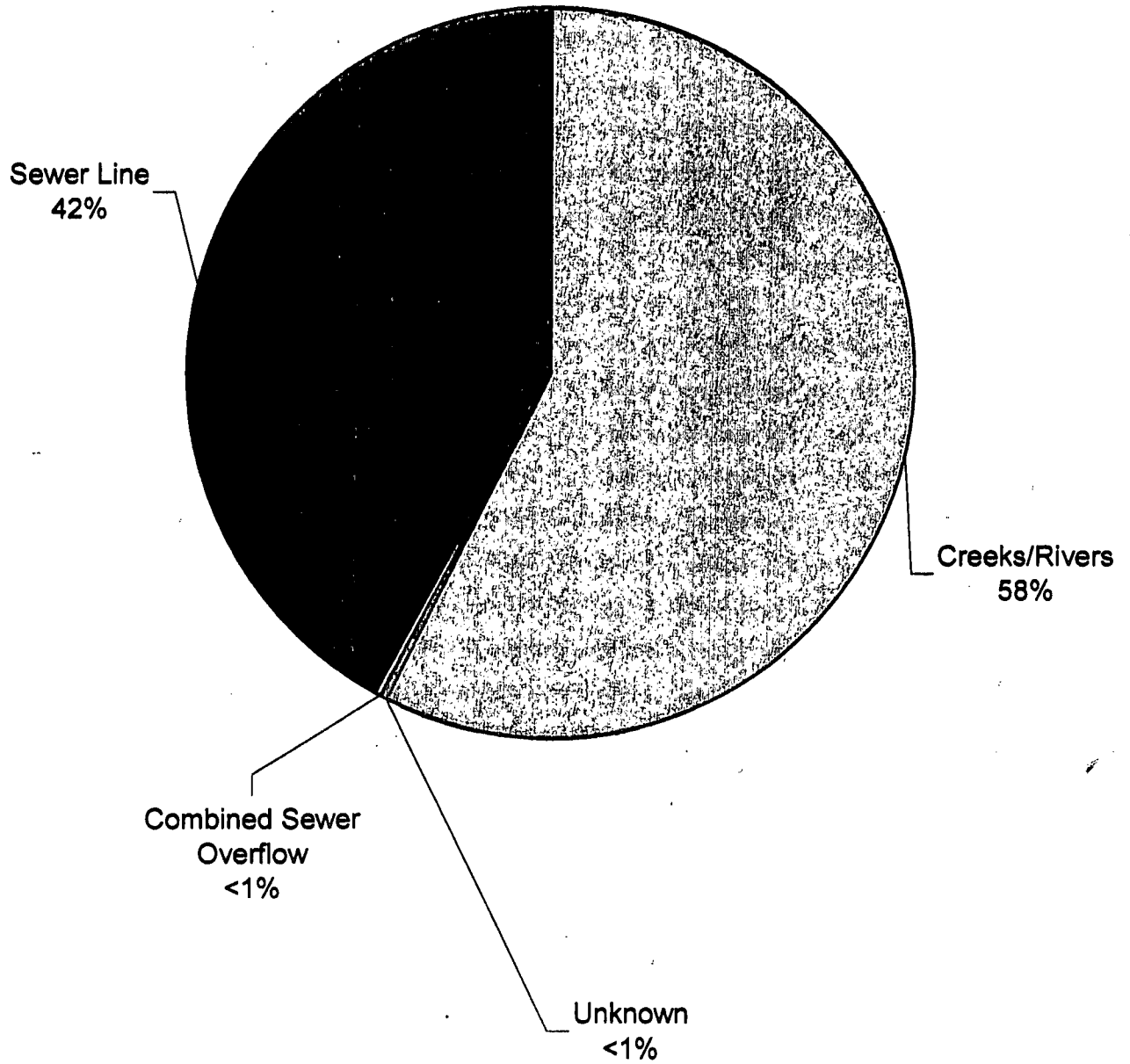


Figure 4. Sources of Contamination Resulting in Warnigs
Posted and Closures Statewide--2000.
(Based on Beach Mile Days)

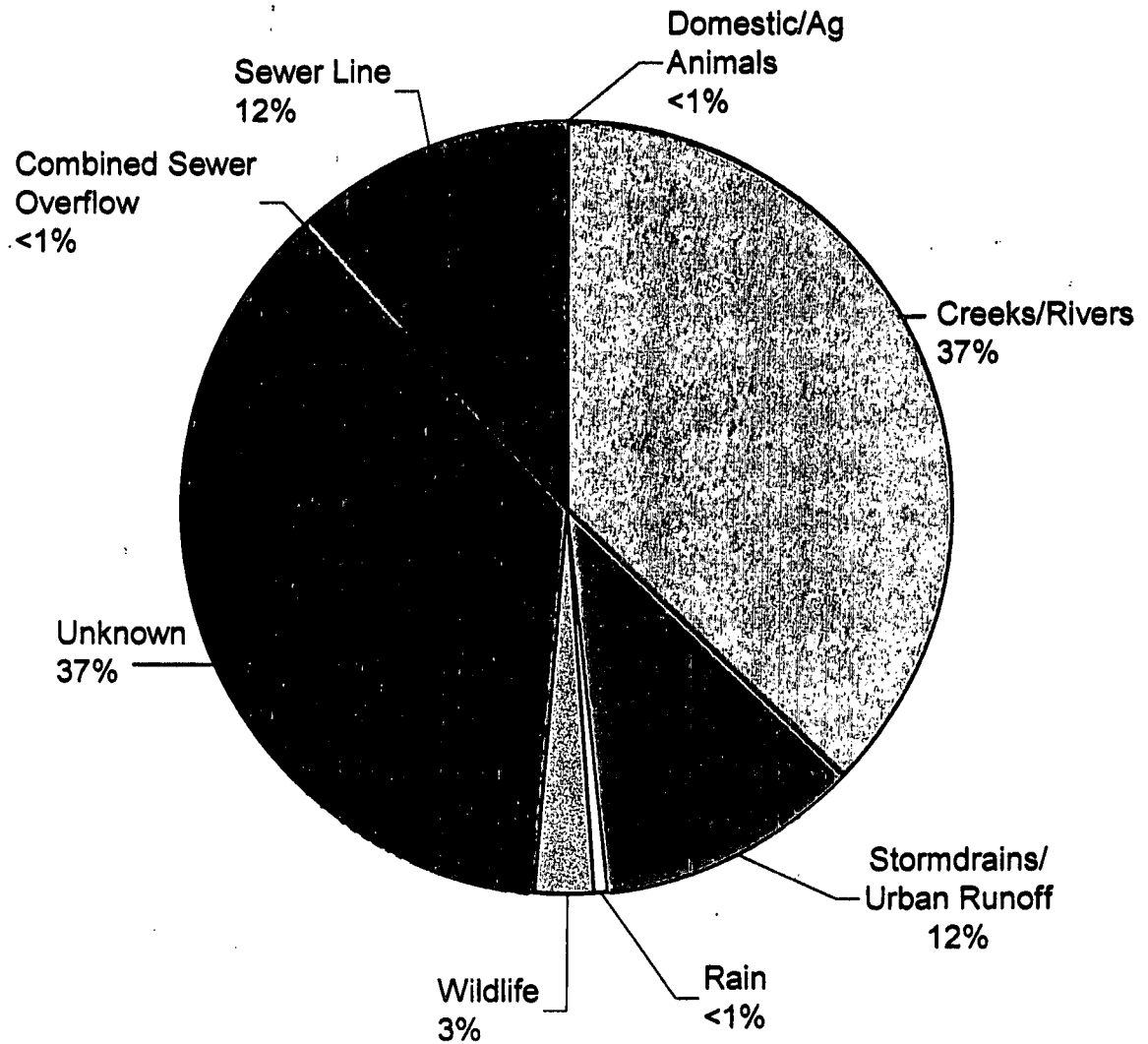


Table 6. Beach Rain Advisories by County--2000		
County	Rain Advisories	Duration of Advisory (Days)
Monterey	2	11
Santa Barbara	3	10
Ventura	103	571
Los Angeles	9	49
Orange	6	58
San Diego	6	38
TOTAL	129	737

According to the extensive research of Heal the Bay, an environmental advocacy group, the majority of California beaches are clean and safe during dry weather. Heal the Bay's 2000-2001 Beach Report Card evaluated 375 Southern California beaches from Point Conception in Santa Barbara County to the Mexican Border and assigned A-F grades based on daily and weekly bacterial pollution levels in the surf zone in correlation to the risk of adverse health effects to humans. Some of their findings are:

- Over 60 percent of southern California beaches (234 of 375) received an "A" grade during dry weather.
- Over 80 percent of open beaches (i.e., locations not within an enclosed bay, harbor, or marina and not impacted by a storm drain) received an "A" grade.
- Over 90 percent of the 21,100 beach sample days during dry weather met State bathing water standards for all bacterial indicators.

Heal the Bay's report documents the disparity in the beach water quality during the dry and wet seasons. Southern California beaches are impacted by rain events through untreated storm drain runoff, which carries bacteria, motor oil, animal wastes, pesticides, yard waste, and trash to the beaches. Close to 70 percent of monitored beaches received an "F" grade during inclement weather conditions as compared to a little over 11 percent during dry weather. The complete report can be accessed at Heal the Bay's website (<http://www.healthebay.org>).

In July 2000 the USEPA released the results of its third annual National Health Protection Survey of Beaches. State and local environmental and public health officials voluntarily returned information on 1,891 beaches. The survey showed that 459 beaches (24 percent of the reported beaches) were affected by at least one posting or closure. Complete results of this survey are available at the USEPA's Beaches Environmental Assessment, Closure and Health (BEACH) Watch website (<http://www.epa.gov/OST/beaches>).

It is difficult to conduct an inter-county comparison of beach posting and closure data even with the implementation of AB 411. The reason for this is that some counties have year round monitoring, which is not required by AB 411. Counties may have different sampling

locations with respect to storm drains. For instance, Los Angeles County has monitoring stations 50 yards from a flowing storm drain whereas San Diego County monitors at the point of discharge. In general, open ocean beaches are cleaner than beaches adjacent to storm drains and beaches located within enclosed bays which have poor water circulation.

It should be noted that beach posting and closure data collected under the requirement of AB 411 may not be an accurate measurement of beach water quality for the following reasons:

1. As mentioned earlier, the indicator bacteria may not be the right indicator of pathogens in shoreline waters.
2. The indicator bacteria assay takes 18 to 36 hours or longer to complete. During this time, the beachgoers may be exposed to harmful pathogens. By the time a beach is posted based on monitoring data, the indicator bacteria may not be present in the shoreline waters. Thus a beach may be open when it is contaminated and posted when it is clean. There is a need for rapid, simple, and inexpensive assays of beach water quality to mitigate this problem.
3. There are many sources of variability in shoreline bacteria monitoring. According to research conducted by the Southern California Coastal Water Research Project, different laboratories reported different bacterial counts for the same sample (inter-laboratory variability). Water samples collected from very close locations in the surf zone had different bacterial counts (spatial variability). Further, water samples collected from the same location but at different times of the day had different bacterial counts (temporal variability).

However, with all these shortcomings, a monitoring program for indicator bacteria remains the best available choice for assessing beach water quality and making posting or closure decisions.

GOVERNOR'S CLEAN BEACH INITIATIVE AND SWRCB'S IMPLEMENTATION PLAN

In January 2001 Governor Gray Davis proposed a "Clean Beach Initiative" to combat the problem of contaminated ocean water and beach postings/closures. The initiative will enable State and local agencies to address this contamination, making California beaches safer and ensuring the economic vitality of coastal areas.

The proposed activities of the initiative include assistance to local agencies in areas that have chronic beach contamination problems and high beach usage, leveraging ongoing strong support from local communities. Measures to curb urban runoff include the diversion of dry weather flows from storm drains, construction of infiltration basins, catch basin inserts, as well as isolating controllable sources of pollution. Construction and restoration of wetlands should decrease the amount of pathogens reaching beaches. The initiative will also provide funding for research to develop rapid, inexpensive methods for detecting and analyzing bacteria and pathogens. This will result in timely beach postings or closures and also will assist in source identification which will allow regulators to more quickly track pollution sources and mitigate the problem.

One of the key projects in the SWRCB's 2001 draft Strategic Plan deals with the implementation of the Governor's Clean Beach Initiative. The SWRCB's Clean Beach Project will develop and implement a comprehensive plan incorporating a watershed approach and involving all SWRCB and RWQCB pertinent water quality programs. A detailed road map will be developed to coordinate the efforts of the SWRCB's regulatory and local assistance functions with the efforts of local, State and federal agencies. The project will have detailed specific actions and milestones. The goal of the project is to significantly and steadily decrease beach closures and postings over the next ten years. The SWRCB has designated a Clean Beaches Coordinator to oversee the development and implementation of the Clean Beach Project and to track and report its progress.

SWRCB staff has taken the lead in scheduling and organizing the meetings of the ad-hoc Beach Water Quality Workgroup. The Workgroup includes representatives from organizations responsible for the protection and reporting of beach water quality including SWRCB, coastal RWQCBs, county environmental health departments, DHS, California Coastal Commission, USEPA (Region 9), sewage treatment plants, Heal the Bay, and other environmental groups. The Workgroup provided valuable input to the SWRCB staff in the development of the beach water quality database. One of the objectives of the SWRCB's Clean Beach Project is to develop capability to share beach closure information through the geographical information system.

As part of the Governor's Clean Beach Initiative, funds will be made available for beach water quality improvement projects. A number of loans and grant programs, such as the SWRCB's Cleanup and Abatement Account (CAA), federal Clean Water Act Sections 205(j) and 319(h) allocations, and Propositions 12 and 13 resources will be tapped for this activity.

For instance, in July 2001, the SWRCB allocated approximately \$1 million to the San Diego RWQCB from the CAA to fund the identification of the presence and source(s) of pathogenic viruses and bacteria in the recreational waters of Mission Bay and associated threats to human health.

On March 7, 2000, California voters passed Proposition 12 (Safe Neighborhood Parks, Clean Water, Clean Air, and Coastal Protection Bond Act) and Proposition 13 (Safe Drinking Water, Clean Water, Watershed Protection, and Flood Protection Bond Act). Proposition 12 provides funding to the State Coastal Conservancy for coastal protection programs. This includes an allocation of \$25 million to the Santa Monica Bay Restoration Project to fund grants to public entities and nonprofit organizations to implement storm water and urban runoff pollution prevention programs, habitat restoration, and other priority activities specified in the Santa Monica Bay Restoration Plan.

Proposition 13 provides funding for coastal nonpoint source programs to improve water quality and environment of coastal waters, estuaries, bay and nearshore waters, and groundwater. Grants of up to \$5 million per project are available for projects to improve water quality at public beaches and to make improvements for the purposes of ensuring that coastal waters adjacent to public beaches meet the State's indicator bacteria standards for water recreation; improvements to existing sewer collection systems and septic systems for restoration and protection of coastal water quality; storm water and runoff pollution reduction and prevention programs for restoration and protection of coastal water quality; and comprehensive capability for monitoring, collecting and analyzing ambient water quality, including maintenance technology that can be entered into a statewide information base with standardized protocols; and sampling, collection, storage and retrieval procedures.

SWRCB will also apply for federal funding that became available this year exclusively for beaches pursuant to the Beaches Environmental and Coastal Health (BEACH) Act of 2000 (Public Law 106-284, October 10, 2000). During this first year, \$2 million in development grants will be made available to coastal and Great Lakes states to improve monitoring and public notification of human health risks at beaches. It is anticipated that in the future this grant program will have a full authorization of \$30 million per year to fund states' clean beach implementation programs.

SWRCB staff has been actively working on other beach related projects. In January 2001, staff submitted a report to the Legislature on a comprehensive coastal water quality monitoring program pursuant to AB 1429 (Chapter 899, Statutes of 1997). Staff is working with the University of California to develop protocols for use in source investigations of storm drains that produce chronic exceedences of bacterial standards in adjacent beach waters, cost to implement these investigations, and a timeline for completion. A report of this information will be submitted to the Legislature by December 1, 2001 as required by Water Code Section 13178.

APPENDIX

County Closure, Posted Warnings, and Rain Advisory Reports In Geographical Order from North to South

Mendocino County Health Department - Beach Closures for 2000

BeachName	Date Closed	Date Opened	Days Closed	Beach Mile Days	Cause	Source
Virginia Creek Beach	12/27/00	1/11/01	15	2.56	Sewer Main Break	Sewer line

Number of Closures: 1

Sum of Days: 15

Sum of Beach Mile Days: 2.6

County of Sonoma Division of Environmental Health - Beach Closures for 2000

BeachName	Date Closed	Date Opened	Days Closed	Beach Mile Days	Cause	Source
Campbell Cove State Beach	4/5/00	4/7/00	2	0.20	Unknown	Wildlife
	8/2/00	8/4/00	2	0.20	Other	Wildlife

Number of Closures: 2

Sum of Days: 4

Sum of Beach Mile Days: 0.4

County of Sonoma Division of Environmental Health - Beach Warnings Posted for 2000

BeachName	Date Posted	Date Opened	Days Posted	Beach Mile Days	Cause	Source
Campbell Cove State Beach	8/24/00	8/28/00	4	0.40	Unknown	Wildlife
	9/20/00	9/22/00	2	0.20	Unknown	Wildlife
	10/11/00	10/16/00	5	0.50	Unknown	Wildlife
Doran Park County Regional Park	4/19/00	4/21/00	2	0.11	Rain	Creeks/Rivers
	9/20/00	9/22/00	2	0.11	Unknown	Wildlife
Salal	4/19/00	4/21/00	2	0.10	Rain	Creeks/Rivers
	5/10/00	5/12/00	2	0.10	Rain	Creeks/Rivers
Salmon Creek State	4/19/00	4/21/00	2	0.11	Rain	Creeks/Rivers
Shell Beach	4/19/00	4/21/00	2	0.20	Rain	Creeks/Rivers
	5/3/00	5/5/00	2	0.20	Other	Wildlife
Stengel Beach	4/19/00	4/21/00	2	0.20	Rain	Creeks/Rivers
Walk-On	5/10/00	5/12/00	2	0.50	Rain	Creeks/Rivers

BeachName	Date Posted	Date Opened	Days Posted	Beach Mile Days	Cause	Source
------------------	------------------------	------------------------	------------------------	--------------------------------	--------------	---------------

Number of Postings: 12

Sum of Days: 29

Sum of Beach Mile Days: 2.7



San Mateo County Environmental Health - Beach Closures for 2001

BeachName	Date Closed	Date Opened	Days Closed	Beach Mile Days	Cause	Source
Pacifica State Beach (San Pedro Beach)	12/3/01	12/10/01	7	10.50	Sewer Manhole Overflow	Sewer line
Pillar Point 2	12/3/01	12/10/01	7	1.99	Sewer Manhole Overflow	Sewer line
Rockaway Beach	1/11/01	1/17/01	6	1.02	Other	Sewer line
	12/3/01	12/10/01	7	3.18	Sewer Manhole Overflow	Sewer line
Roosevelt State Beach	12/3/01	12/7/01	4	1.14	Sewer Manhole Overflow	Sewer line
Venice Beach	12/3/01	12/10/01	7	3.38	Sewer Manhole Overflow	Sewer line

Number of Closures: 6
Sum of Days: 38
Sum of Beach Mile Days: 21.2

San Francisco County - Beach Warnings Posted for 2001

BeachName	Date Posted	Date Opened	Days Posted	Beach Mile Days	Cause	Source
Aquatic Park	12/2/01	12/3/01	1	0.50	Rain	Urban runoff-Wet
	12/28/01	12/31/01	3	1.50	Rain	Urban runoff-Wet
Baker Beach	1/25/01	1/26/01	1	0.47	Rain	Combined Sewer Overflo
	1/25/01	1/28/01	3	1.41	Rain	Combined Sewer Overflo
	2/23/01	2/24/01	1	0.47	Rain	Combined Sewer Overflo
	11/12/01	11/13/01	1	1.00	Rain	Combined Sewer Overflo
	11/16/01	11/17/01	1	1.00	Rain	Combined Sewer Overflo
Candlestick Point	1/11/01	1/13/01	2	2.00	Rain	Combined Sewer Overflo
	2/23/01	2/24/01	1	0.47	Rain	Combined Sewer Overflo
	11/12/01	11/15/01	3	1.42	Rain	Combined Sewer Overflo
	12/1/01	12/8/01	7	12.50	Rain	Urban runoff-Wet
	12/4/01	12/7/01	3	10.50	Rain	Urban runoff-Wet

BeachName	Date Posted	Date Opened	Days Posted	Beach Mile Days	Cause	Source
Candlestick Point	12/28/01	12/31/01	3	6.50	Rain	Urban runoff-Wet
China Beach	1/25/01	1/26/01	1	0.47	Rain	Combined Sewer Overflo
	2/23/01	2/24/01	1	0.47	Rain	Combined Sewer Overflo
	12/22/01	12/23/01	1	0.50	Rain	Combined Sewer Overflo
Crissy Field	11/16/01	11/17/01	1	2.00	Rain	Combined Sewer Overflo
	12/2/01	12/4/01	2	3.00	Rain	Urban runoff-Wet
	12/28/01	12/29/01	1	2.00	Rain	Urban runoff-Wet
Fort Funston	2/9/01	2/10/01	1	0.03	Rain	Combined Sewer Overflo
	11/12/01	11/13/01	1	1.50	Rain	Combined Sewer Overflo
	12/2/01	12/3/01	1	0.50	Rain	Combined Sewer Overflo
	12/14/01	12/15/01	1	0.50	Rain	Combined Sewer Overflo
	12/22/01	12/23/01	1	0.50	Rain	Combined Sewer Overflo
	12/28/01	1/1/02	4	2.00	Rain	Combined Sewer Overflo

BeachName	Date Posted	Date Opened	Days Posted	Beach Mile Days	Cause	Source
Ocean Beach	11/12/01	11/17/01	5	5.00	Rain	Combined Sewer Overflo
	11/12/01	11/15/01	3	4.50	Rain	Combined Sewer Overflo
	11/12/01	11/14/01	2	2.00	Rain	Combined Sewer Overflo
	11/29/01	12/1/01	2	2.00	Rain	Combined Sewer Overflo
	11/29/01	11/30/01	1	3.50	Rain	Combined Sewer Overflo
	12/2/01	12/5/01	3	7.50	Rain	Combined Sewer Overflo
	12/14/01	12/16/01	2	5.50	Rain	Combined Sewer Overflo
	12/22/01	12/24/01	2	7.00	Rain	Combined Sewer Overflo
	12/28/01	1/1/02	4	14.00	Rain	Combined Sewer Overflo

Number of Postings: 34
Sum of Days: 70
Sum of Beach Mile Days: 104.2

County of Sonoma Division of Environmental Health - Beach Warnings Posted for 2001

BeachName	Date Posted	Date Opened	Days Posted	Beach Mile Days	Cause	Source
Campbell Cove State Beach	7/11/01	7/13/01	2	0.20	Unknown	Unknown
	10/3/01	10/5/01	2	0.20	Unknown	Unknown

Number of Postings: 2
Sum of Days: 4
Sum of Beach Mile Days: 0.4

San Mateo County Environmental Health - Beach Closures for 2000

BeachName	Date Closed	Date Opened	Days Closed	Beach Mile Days	Cause	Source
Fitzgerald Marine Reserve	2/17/00	5/11/00	84	4.77	Rain	Sewer line
Miramar Beach	2/14/00	2/28/00	14	0.80	Rain	Sewer line
Montara Beach	5/8/00	5/11/00	3	0.34	Sewer Pump Failure	Sewer line
Pacifica State Beach (San Pedro Beach)	2/15/00	3/15/00	29	1.65	Rain	Sewer line
Pillar Point Beach	2/14/00	3/8/00	23	1.31	Rain	Sewer line
Sharp Park Beach	2/15/00	2/28/00	13	0.74	Rain	Sewer line
	10/22/00	10/25/00	3	0.34	Sewer Main Break	Sewer line
Surfer's Beach	2/14/00	3/16/00	31	31.00	Rain	Sewer line
Venice Beach	1/3/00	1/20/00	17	0.97	Unknown	Sewer line

Number of Closures: 9

Sum of Days: 217

Sum of Beach Mile Days: 41.9

San Mateo County Environmental Health - Beach Warnings Posted for 2000

BeachName	Date Posted	Date Opened	Days Posted	Beach Mile Days	Cause	Source
Fitzgerald Marine Reserve	1/20/00	5/3/00	104	5.91	Unknown	Creeks/Rivers
	5/25/00	8/27/00	94	5.34	Other	Domestic/Ag animals
	9/20/00	9/23/00	3	0.17	Other	Creeks/Rivers
Pacifica State Beach (San Pedro Beach)	1/20/00	3/6/00	46	2.61	Unknown	Creeks/Rivers
	5/11/00	5/18/00	7	0.40	Unknown	Creeks/Rivers
	11/1/00	11/9/00	8	0.91	Unknown	Creeks/Rivers
Pillar Point Beach	1/20/00	3/1/00	41	0.58	Unknown	Storm drain
	3/16/00	3/23/00	7	0.40	Unknown	Storm drain
	4/20/00	4/27/00	7	0.40	Unknown	Storm drain
	5/3/00	5/18/00	15	0.85	Unknown	Storm drain
San Gregorio State Beach	3/2/00	3/16/00	14	0.80	Unknown	Creeks/Rivers
Surfer's Beach	5/11/00	5/18/00	7	0.40	Unknown	Rain

BeachName	Date Posted	Date Opened	Days Posted	Beach Mile Days	Cause	Source
Surfer's Beach	11/23/00	11/29/00	6	0.68	Other	Wildlife
Venice Beach	3/2/00	3/8/00	6	0.34	Unknown	Creeks/Rivers
	3/30/00	4/6/00	7	0.40	Unknown	Creeks/Rivers
	5/11/00	5/18/00	7	0.40	Unknown	Creeks/Rivers
	11/1/00	11/9/00	8	0.91	Unknown	Creeks/Rivers

Number of Postings: 17
Sum of Days: 387
Sum of Beach Mile Days: 21.5

County of Santa Cruz Environmental Health Service - Beach Warnings Posted for 2000

BeachName	Date Posted	Date Opened	Days Posted	Beach Mile Days	Cause	Source
Cowell Beach	4/12/00	4/17/00	5	2.50	Unknown	Wildlife
	6/7/00	6/15/00	8	4.00	Unknown	Wildlife
Lighthouse Beach	9/20/00	9/21/00	1	0.25	Unknown	Wildlife
Mitchell's Cove Beach	9/19/00	9/21/00	2	1.00	Unknown	Wildlife
Rio del Mar Beach	9/1/00	9/8/00	7	3.50	Unknown	Wildlife
	10/13/00	10/27/00	14	1.59	Unknown	Rain
Seacliff State Beach	9/1/00	9/8/00	7	7.00	Unknown	Wildlife

Number of Postings: 7

Sum of Days: 44

Sum of Beach Mile Days: 19.8

Monterey County Environmental Health - Beach Closures for 2000

BeachName	Date Closed	Date Opened	Days Closed	Beach Mile Days	Cause	Source
Heritage Harbor	8/4/00	8/8/00	4	0.40	Line Break	Sewer line
	9/29/00	10/2/00	3	0.75	Line Break	Sewer line
Lover's Point	1/12/00	1/14/00	2	0.50	Sewer Manhole Overflow	Sewer line
	8/2/00	8/4/00	2	0.50	Blockage	Sewer line
	10/21/00	10/24/00	3	0.75	Sewer Manhole Overflow	Sewer line
Spanish Bay Beach	3/22/00	3/24/00	2	1.00	Vandal Activities	Sewer line

Number of Closures: 6

Sum of Days: 16

Sum of Beach Mile Days: 3.9

Monterey County Environmental Health - Beach Warnings Posted for 2000

BeachName	Date Posted	Date Opened	Days Posted	Beach Mile Days	Cause	Source
Del Monte Beach	6/20/00	6/22/00	2	1.00	Unknown	Urban runoff
Lover's Point	1/20/00	1/21/00	1	0.25	Unknown	Urban runoff
	3/15/00	3/17/00	2	0.50	Unknown	Urban runoff
	5/10/00	5/12/00	2	0.50	Unknown	Urban runoff
	6/27/00	6/29/00	2	0.50	Unknown	Urban runoff
	8/29/00	8/31/00	2	0.50	Unknown	Urban runoff
	12/14/00	12/15/00	1	0.25	Unknown	Urban runoff
San Carlos Beach	5/10/00	5/12/00	2	0.50	Unknown	Urban runoff
	8/24/00	8/29/00	5	1.25	Unknown	Urban runoff
Spanish Bay Beach	8/1/00	8/4/00	3	1.50	Unknown	Storm drain
	10/25/00	11/2/00	8	4.00	Unknown	Urban runoff
Stillwater Cove	6/20/00	6/23/00	3	0.75	Unknown	Urban runoff

BeachName	Date Posted	Date Opened	Days Posted	Beach Mile Days	Cause	Source
Stillwater Cove	6/27/00	6/29/00	2	0.50	Unknown	Urban runoff
	7/26/00	7/28/00	2	0.50	Unknown	Urban runoff
	9/6/00	9/8/00	2	0.50	Unknown	Urban runoff
	10/30/00	11/2/00	3	0.75	Unknown	Urban runoff

Number of Postings: 16
Sum of Days: 42
Sum of Beach Mile Days: 13.8

Monterey County Environmental Health - Rain Advisories for 2000

BeachName	Date Closed	Date Opened	Days Closed	Cause	Source
All Monterey County Beac	2/15/00	2/19/00	4	Rain	Rain
	10/10/00	10/17/00	7	Rain	Rain

Number of Advisories: 2

Number of Advisory Days: 11

San Luis Obispo County - Beach Closures for 2000

BeachName	Date Closed	Date Opened	Days Closed	Beach Mile Days	Cause	Source
Shell Beach	5/27/00	5/28/00	1	0.11	Sewer Overflow at Residence	Unknown

Number of Closures: 1

Sum of Days: 1

Sum of Beach Mile Days: 0.1

San Luis Obispo County - Beach Warnings

Posted for 2000

BeachName	Date Posted	Date Opened	Days Posted	Beach Mile Days	Cause	Source
Avila Beach	2/15/00	2/20/00	5	0.43	Rain	Unknown
Cayucos	1/25/00	1/26/00	1	0.17	Rain	Unknown
	2/15/00	2/20/00	5	0.85	Rain	Unknown
Moonstone Beach	1/25/00	1/26/00	1	0.28	Rain	Unknown
Morro Bay City Beach	2/15/00	2/17/00	2	0.34	Rain	Unknown
Pismo State Beach	2/15/00	2/17/00	2	0.11	Rain	Unknown

Number of Postings: 6

Sum of Days: 16

Sum of Beach Mile Days: 2.2

Santa Barbara County, Environmental Health Services - Beach Warnings Posted for 2000

BeachName	Date Posted	Date Opened	Days Posted	Beach Mile Days	Cause	Source
Arroyo Burro Beach	2/9/00	3/1/00	21	1.19	Unknown	Unknown
	3/8/00	3/10/00	2	0.11	Rain	Urban runoff
	3/15/00	3/17/00	2	0.11	Urban Runoff	Urban runoff
	4/19/00	4/26/00	7	0.40	Rain	Urban runoff
	5/3/00	5/10/00	7	0.40	Lagoon Opening	Urban runoff
	6/1/00	6/7/00	6	0.34	Lagoon Opening	Urban runoff/wildlife
	6/21/00	6/23/00	2	0.11	Lagoon Opening	Wildlife/urban runoff
	6/28/00	6/30/00	2	0.11	Lagoon Opening	Domestic animals/wildlif
	7/11/00	7/18/00	7	0.40	Unknown	Creeks/Rivers
	7/25/00	7/26/00	1	0.06	Unknown	Creeks/Rivers
	8/1/00	8/3/00	2	0.11	Unknown	Creeks/Rivers
	8/8/00	8/15/00	7	0.40	Unknown	Creeks/Rivers

BeachName	Date Posted	Date Opened	Days Posted	Beach Mile Days	Cause	Source
Arroyo Burro Beach	8/22/00	8/23/00	1	0.06	Unknown	Creeks/Rivers
	8/29/00	8/31/00	2	0.11	Unknown	Creeks/Rivers
	9/13/00	9/15/00	2	0.11	Unknown	Creeks/Rivers
Arroyo Quemada Beach	1/5/00	1/20/00	15	0.85	Urban Runoff	Wildlife
	2/16/00	3/17/00	30	1.70	Rural Runoff	Wildlife
	3/29/00	5/10/00	42	2.39	rural runoff	Wildlife
	5/24/00	6/1/00	8	0.45	Other	Wildlife
	6/14/00	6/21/00	7	0.40	Gulls	Wildlife
	6/28/00	7/7/00	9	0.51	wildlife	gulls
	7/12/00	7/14/00	2	0.11	Unknown	Wildlife/septic
	7/19/00	7/21/00	2	0.11	wildlife	Wildlife
	7/26/00	8/9/00	14	0.80	wildlife	Wildlife
	8/23/00	8/25/00	2	0.11	wildlife	Wildlife

BeachName	Date Posted	Date Opened	Days Posted	Beach Mile Days	Cause	Source
Arroyo Quemada Beach	9/13/00	9/20/00	7	0.40	wildlife	Wildlife
	9/27/00	10/11/00	14	0.80	Unknown	Wildlife
	10/18/00	10/25/00	7	0.40	Unknown	Unknown
	11/8/00	11/15/00	7	0.40	Unknown	unknown
	11/22/00	12/13/00	21	1.19	Unknown	Unknown
	12/20/00	1/18/01	29	1.65	Unknown	unknown
Butterfly Beach	2/2/00	2/4/00	2	0.11	Rain	Unknown
	2/16/00	2/23/00	7	0.40	Rain	Urban runoff
	3/8/00	3/10/00	2	0.11	Rain	Urban runoff
	4/5/00	4/7/00	2	0.11	Unknown	unknown
	4/19/00	4/21/00	2	0.11	Rain	Urban runoff
	11/29/00	12/1/00	2	0.11	Unknown	Unknown
Carpinteria City Beach	2/2/00	2/4/00	2	0.11	Urban Runoff	Urban runoff

BeachName	Date Posted	Date Opened	Days Posted	Beach Mile Days	Cause	Source
Carpinteria City Beach	4/19/00	4/21/00	2	0.11	Rain	Urban runoff
Carpinteria State Beach	2/16/00	3/1/00	14	0.80	Urban Runoff	Urban runoff
	3/8/00	3/15/00	7	0.40	Rain	Urban runoff
	4/19/00	4/26/00	7	0.40	Rain	Urban runoff
East Beach at Mission Creek	1/12/00	1/14/00	2	0.11	Unknown	Urban runoff
	1/20/00	1/26/00	6	0.34	Urban Runoff	Creeks/Rivers
	2/16/00	3/1/00	14	0.80	Rain	Urban runoff
	3/8/00	3/15/00	7	0.40	Rain	Urban runoff
	3/22/00	3/24/00	2	0.11	Urban Runoff	Urban runoff
	4/19/00	4/21/00	2	0.11	Rain	Urban runoff
	4/26/00	4/28/00	2	0.11	Unknown	Urban runoff
	9/18/00	9/20/00	2	0.11	Unknown	unknown
	11/1/00	11/3/00	2	0.11	Rain	Urban runoff

BeachName	Date Posted	Date Opened	Days Posted	Beach Mile Days	Cause	Source
East Beach at Sycamore Creek	2/2/00	2/4/00	2	0.11	Urban Runoff	Urban runoff
	2/16/00	3/3/00	16	0.91	Rain	Urban runoff
	3/8/00	3/17/00	9	0.51	Rain	Urban runoff
	4/19/00	4/21/00	2	0.11	Rain	Urban runoff
	7/19/00	7/21/00	2	0.11	Unknown	unknown
	11/8/00	11/10/00	2		dredging	decaying material
	11/29/00	12/1/00	2	0.11	Dredging	decay material
	12/28/00	12/30/00	2	0.11	Unknown	unknown
El Capitan State Beach	2/16/00	2/23/00	7	0.40	Rain	rural runoff
	3/1/00	3/3/00	2	0.11	rural runoff	rural runoff
	4/12/00	4/14/00	2	0.11	Unknown	unknown
	4/19/00	4/21/00	2	0.11	Rain	Urban runoff
	5/10/00	5/12/00	2	0.11	Unknown	Creeks/Rivers

BeachName	Date Posted	Date Opened	Days Posted	Beach Mile Days	Cause	Source
El Capitan State Beach	7/26/00	7/28/00	2	0.11	Unknown	Unknown
Gaviota State Beach	2/9/00	2/23/00	14	0.80	Rural Runoff	Creeks/Rivers
	3/1/00	3/3/00	2	0.11	rural runoff	rural runoff
	3/8/00	3/15/00	7	0.40	Rain	rural runoff
	6/14/00	6/16/00	2	0.11	wildlife	Gulls
	8/1/00	8/8/00	7	0.40	Unknown	unknown
	8/16/00	8/18/00	2	0.11	Unknown	Creeks/Rivers
	8/23/00	8/25/00	2	0.11	Unknown	Creeks/Rivers
	9/13/00	9/20/00	7	0.40	Unknown	unknown
	9/27/00	9/29/00	2	0.11	Unknown	Unknown
	10/18/00	10/25/00	7	0.40	Unknown	Unknown
	11/1/00	11/3/00	2	0.11	Rain	unknown
	11/15/00	11/17/00	2	0.11	Unknown	Unknown

BeachName	Date Posted	Date Opened	Days Posted	Beach Mile Days	Cause	Source
Gaviota State Beach	12/13/00	12/20/00	7	0.40	Rain	unknown
Goleta Beach	1/20/00	1/26/00	6	0.34	Urban Runoff	Creeks/Rivers
	2/16/00	3/1/00	14	0.80	Rain	Urban runoff
	3/8/00	3/15/00	7	0.40	Rain	Urban runoff
	4/19/00	4/21/00	2	0.11	Rain	Urban runoff
	6/7/00	6/9/00	2	0.11	Unknown Cause	Wildlife
	6/21/00	6/23/00	2	0.11	fecal matter	unknown
	7/11/00	7/13/00	2	0.11	Unknown	unknown
	9/20/00	9/22/00	2	0.11	Unknown	unknown
Guadalupe Dunes	7/7/00	7/10/00	3	0.17	Unknown Cause	Creeks/Rivers
	9/13/00	9/15/00	2	0.11	Unknown	unknown
Hammond's Beach	2/2/00	2/4/00	2	0.11	Urban Runoff	Urban runoff
	2/16/00	3/1/00	14	0.80	Rain	Urban runoff

BeachName	Date Posted	Date Opened	Days Posted	Beach Mile Days	Cause	Source
Hammond's Beach	3/8/00	3/15/00	7	0.40	Rain	Urban runoff
	4/19/00	4/28/00	9	0.51	Rain	Urban runoff
	5/10/00	5/12/00	2	0.11	Unknown Cause	Urban runoff
	9/20/00	9/22/00	2	0.11	Unknown	unknown
	10/4/00	10/6/00	2	0.11	Unknown	Unknown
	11/1/00	11/3/00	2	0.11	Rain	unknown
	11/22/00	11/29/00	7	0.40	Unknown	Unknown
Hope Ranch Beach	1/20/00	2/2/00	13	0.74	Urban Runoff	Creeks/Rivers
	2/9/00	3/8/00	28	1.59	Unknown	Urban runoff
	3/8/00	3/15/00	7	0.40	Rain	Urban runoff
	3/22/00	3/29/00	7	0.40	Urban Runoff	Urban runoff
	4/19/00	5/3/00	14	0.80	Rain	Urban runoff
	5/10/00	5/12/00	2	0.11	Unknown	Creeks/Rivers

BeachName	Date Posted	Date Opened	Days Posted	Beach Mile Days	Cause	Source
Hope Ranch Beach	6/21/00	6/28/00	7	0.40	Unknown	Urban runoff/horses
	11/1/00	11/3/00	2	0.11	Rain	unknown
	12/13/00	12/15/00	2	0.11	Rain	Unknown
Jalama Beach	2/16/00	3/1/00	14	0.80	Rain	rural runoff
	3/8/00	3/15/00	7	0.40	Rain	rural runoff
	4/19/00	5/5/00	16	0.91	Rain	Urban runoff
	5/10/00	5/12/00	2	0.11	Urban Runoff	Creeks/Rivers
	6/1/00	6/14/00	13	0.74	sulfur spring/cattle/wildlife	Creeks/Rivers
	6/21/00	6/23/00	2	0.11	Unknown	Wildlife
	6/28/00	7/12/00	14	0.80	sulfur spring/cattle	Wildlife
	10/18/00	10/20/00	2	0.11	Unknown	Unknown
	10/25/00	11/1/00	7	0.40	Unknown	Unknown
	11/29/00	12/6/00	7	0.40	Unknown	Unknown

BeachName	Date Posted	Date Opened	Days Posted	Beach Mile Days	Cause	Source
Jalama Beach	12/13/00	12/15/00	2	0.11	Rain	unknown
	12/20/00	12/22/00	2	0.11	Unknown	unknown
Leadbetter Beach	2/9/00	3/2/00	22	1.25	Urban Runoff	Urban runoff
	3/8/00	3/10/00	2	0.11	Rain	Urban runoff
	3/22/00	3/24/00	2	0.11	Urban Runoff	Urban runoff
	4/5/00	4/7/00	2	0.11	Unknown	unknown
	4/19/00	4/21/00	2	0.11	Rain	Urban runoff
	5/10/00	5/12/00	2	0.11	Unknown	Wildlife
Ocean Beach	6/14/00	6/16/00	2	0.11	bird droppings	Wildlife
	2/16/00	2/23/00	7	0.40	Rain	Rain
	3/1/00	3/8/00	7	0.40	rural runoff	rural runoff
Refugio State Beach	10/18/00	10/20/00	2	0.11	Unknown	Unknown
	1/20/00	2/2/00	13	0.74	Urban Runoff	Creeks/Rivers

BeachName	Date Posted	Date Opened	Days Posted	Beach Mile Days	Cause	Source
Refugio State Beach	2/16/00	3/1/00	14	0.80	Rural Runoff	rural runoff
	3/8/00	3/15/00	7	0.40	Rain	rural runoff
	4/19/00	4/26/00	7	0.40	Rain	Urban runoff
	6/1/00	6/7/00	6	0.34	Lagoon Opening	Creeks/Rivers/wildlife
	6/14/00	6/21/00	7	0.40	bacT regrowth/wildlife	Wildlife
	6/28/00	7/7/00	9	0.51	Unknown	Wildlife
	7/12/00	7/14/00	2	0.11	Unknown	Creeks/Rivers
	10/25/00	11/1/00	7	0.40	Unknown	Unknown
	11/15/00	11/17/00	2	0.11	Unknown	unknown
	12/13/00	12/20/01	372	21.14	Rain	unknown
Rincon Beach	1/20/00	1/26/00	6	0.34	Rural Runoff	Creeks/Rivers
	2/2/00	2/4/00	2	0.11	Rural Runoff	Creeks/Rivers
	2/16/00	2/22/00	6	0.34	Rain	Rain

BeachName	Date Posted	Date Opened	Days Posted	Beach Mile Days	Cause	Source
Rincon Beach	3/8/00	3/15/00	7	0.40	Rain	Urban runoff
	4/19/00	4/21/00	2	0.11	Rocks	Urban runoff
	6/28/00	6/30/00	2	0.11	birds	Wildlife
	7/19/00	7/21/00	2	0.11	Unknown	Creeks/Rivers
	10/25/00	11/1/00	7	0.40	Unknown	Unknown
	11/29/00	12/1/00	2	0.11	Unknown	Unknown
Sands Beach at Coal Oil Point	2/16/00	2/23/00	7	0.40	Rain	Rain
	4/19/00	4/21/00	2	0.11	Rain	rural runoff
	6/14/00	6/16/00	2	0.11	birds	Wildlife
	11/1/00	11/3/00	2	0.11	Rain	unknown

Number of Postings: 152
Sum of Days: 1296
Sum of Beach Mile Days: 73.5

Santa Barbara County,Environmental Health Services - Rain Advisories for 2000

BeachName	Date Closed	Date Opened	Days Closed	Cause	Source
	4/17/00	4/20/00	3	Rain	Urban runoff
	10/11/00	10/14/00	3	Rain	Urban runoff
	10/26/00	10/30/00	4	Rain	Urban runoff

Number of Advisories: 3

Number of Advisory Days: 10

County of Ventura - Environmental Health Division - Beach Closures for 2000

BeachName	Date Closed	Date Opened	Days Closed	Beach Mile Days	Cause	Source
Marina Park Beach (#22000)	2/22/00	2/25/00	3	0.17	Manhole Failure	Sewer line
Peninsula Beach (#23000)	1/18/00	1/21/00	3	0.17	Blockage	Sewer line
	1/27/00	1/30/00	3	0.17	Blockage	Sewer line
San Buenventura St. Bch. - Kalorama St.	1/26/00	1/29/00	3	0.17	Blockage	Sewer line

Number of Closures: 4

Sum of Days: 12

Sum of Beach Mile Days: 0.7

County of Ventura - Environmental Health Division - Beach Warnings Posted for 2000

BeachName	Date Posted	Date Opened	Days Posted	Beach Mile Days	Cause	Source
County Line Beach (#49000)	2/9/00	2/10/00	1	0.06	Unknown	Unknown
Deer Creek Beach (#48000)	1/12/00	1/20/00	8	0.45	Unknown	Unknown
	10/4/00	10/5/00	1	0.06	Unknown	Unknown
	11/15/00	11/17/00	2	0.11	Unknown	Unknown
Hobson County Park (#5000)	11/7/00	11/9/00	2	0.11	Unknown	Unknown
Mandalay County Park - Channel Way (#29500)	2/9/00	2/10/00	1	0.06	Unknown	Unknown
Mandos Cove Beach (#8000)	11/7/00	11/9/00	2	0.11	Unknown	Unknown
Marina Park Beach (#22000)	11/28/00	11/30/00	2	0.11	Unknown	Unknown
McGrath St. Bch. .5 mi. N of Gonzales Rd.	2/9/00	2/10/00	1	0.06	Unknown	Unknown
	9/12/00	9/14/00	2	0.11	Unknown	Unknown
McGrath St. Bch. - S. end McGrath Lake (#28000)	2/9/00	2/10/00	1	0.06	Unknown	Unknown
McGrath State Beach - Gonzales Rd. (#27000)	7/26/00	7/27/00	1	0.06	Unknown	Unknown

BeachName	Date Posted	Date Opened	Days Posted	Beach Mile Days	Cause	Source
Oil Piers Beach (#4000)	11/7/00	11/9/00	2	0.11	Unknown	Unknown
	11/28/00	11/30/00	2	0.11	Unknown	Unknown
Ormond Beach - Arnold Rd. (#44000)	9/26/00	9/29/00	3	0.17	Unknown	Unknown
	11/29/00	12/1/00	2	0.11	Unknown	Unknown
	12/13/00	12/20/00	7	0.40	Unknown	Unknown
Ormond Beach - Industrial Drain (#43000)	1/19/00	1/25/00	6	0.34	Unknown	Unknown
	3/29/00	3/30/00	1	0.06	Unknown	Unknown
	8/9/00	8/15/00	6	0.34	Unknown	Unknown
	12/13/00	12/14/00	1	0.06	Unknown	Unknown
Ormond Beach - J St. (#42000)	1/12/00	1/20/00	8	0.45	Unknown	Unknown
	12/13/00	12/20/00	7	0.40	Unknown	Unknown
Oxnard State Beach - Starfish Dr. (#33000)	2/9/00	2/10/00	1	0.06	Unknown	Unknown
	11/8/00	11/9/00	1	0.06	Unknown	Unknown

BeachName	Date Posted	Date Opened	Days Posted	Beach Mile Days	Cause	Source
Peninsula Beach (#23000)	4/12/00	4/14/00	2	0.11	Unknown	Unknown
	9/19/00	9/26/00	7	0.40	Unknown	Unknown
	11/28/00	11/30/00	2	0.11	Unknown	Unknown
	12/5/00	12/13/00	8	0.45	Unknown	Unknown
Port Hueneme Beach Park (#41000)	9/13/00	9/14/00	1	0.06	Unknown	Unknown
	12/13/00	12/14/00	1	0.06	Unknown	Unknown
Promenade Park - Figueroa St. (#14000)	1/20/00	1/21/00	1	0.06	Unknown	Unknown
Promenade Park - Holiday Inn (#17000)	1/12/00	1/13/00	1	0.06	Unknown	Unknown
	4/4/00	4/6/00	2	0.11	Unknown	Unknown
	9/12/00	9/14/00	2	0.11	Unknown	Unknown
Promenade Park - Oak St. (#16000)	1/20/00	1/21/00	1	0.06	Unknown	Unknown
	4/4/00	4/6/00	2	0.11	Unknown	Unknown
Promenade Park - Redwood Apts. (#15000)	1/20/00	1/21/00	1	0.06	Unknown	Unknown

BeachName	Date Posted	Date Opened	Days Posted	Beach Mile Days	Cause	Source
Rincon Beach - creek mouth (#1000)	3/14/00	3/15/00	1	0.06	Unknown	Unknown
	5/18/00	5/22/00	4	0.23	Unknown	Unknown
	7/10/00	7/12/00	2	0.11	Unknown	Unknown
	7/31/00	8/8/00	8	0.45	Unknown	Unknown
	8/29/00	8/30/00	1	0.06	Unknown	Unknown
	9/12/00	9/19/00	7	0.40	Unknown	Unknown
	12/19/00	12/27/00	8	0.45	Unknown	Unknown
Rincon Beach - flagpole (#1050)	3/14/00	3/15/00	1	0.06	Unknown	Unknown
	5/18/00	5/22/00	4	0.23	Unknown	Unknown
	7/5/00	7/12/00	7	0.40	Unknown	Unknown
	7/31/00	8/8/00	8	0.45	Unknown	Unknown
	8/29/00	8/30/00	1	0.06	Unknown	Unknown
Rincon Beach - footpath (#1100)	11/7/00	11/9/00	2	0.11	Unknown	Unknown

BeachName	Date Posted	Date Opened	Days Posted	Beach Mile Days	Cause	Source
Rincon Beach - footpath (#1100)	12/12/00	12/13/00	1	0.06	Unknown	Unknown
San Buenaventura St. Bch. - San Jon Rd.	1/20/00	1/28/00	8	0.45	Unknown	Unknown
	7/25/00	8/1/00	7	0.40	Unknown	Unknown
	8/8/00	8/14/00	6	0.34	Unknown	Unknown
	11/7/00	11/9/00	2	0.11	Unknown	Unknown
San Buenaventura St. Bch. - Weymouth Ln.	11/28/00	11/30/00	2	0.11	Unknown	Unknown
San Buenaventura State Bch. - Dover Ln. (#20000)	11/28/00	11/30/00	2	0.11	Unknown	Unknown
San Buenaventura St. Bch. - Kalorama St.	7/10/00	7/27/00	17	0.97	Unknown	Unknown
Silverstrand Beach - San Nicolas Ave. (#38000)	10/25/00	10/27/00	2		Unknown	Unknown
	12/13/00	12/14/00	1	0.06	Unknown	Unknown
Silverstrand Beach - Sawtelle Ave. (#40000)	1/12/00	1/20/00	8	0.45	Unknown	Unknown
	12/13/00	12/14/00	1	0.06	Unknown	Unknown
Solimar Beach (#9000)	4/26/00	4/27/00	1	0.06	Unknown	Unknown

BeachName	Date Posted	Date Opened	Days Posted	Beach Mile Days	Cause	Source
Solimar Beach (#9000)	11/28/00	11/30/00	2	0.11	Unknown	Unknown
South Jetty Beach (#24000)	2/8/00	2/17/00	9	0.51	Unknown	Unknown
	12/12/00	12/13/00	1	0.06	Unknown	Unknown
Staircase State Beach (#50000)	3/22/00	3/23/00	1	0.06	Unknown	Unknown
Surfer's Point - "Stables" (#13000)	4/12/00	4/14/00	2	0.11	Unknown	Unknown
	6/6/00	6/7/00	1	0.06	Unknown	Unknown
	7/6/00	7/12/00	6	0.34	Unknown	Unknown
	8/8/00	8/9/00	1	0.06	Unknown	Unknown

Number of Postings: 72
Sum of Days: 237
Sum of Beach Mile Days: 13.4

County of Ventura - Environmental Health Division - Rain Advisories for 2000

BeachName	Date Closed	Date Opened	Days Closed	Cause	Source
County Line Beach (#4900)	3/8/00	3/10/00	2	Rain	Urban runoff
	4/19/00	4/26/00	7	Rain	Urban runoff
Emma Wood State Beach (3/7/00	3/10/00	3	Rain	Urban runoff
	10/30/00	11/1/00	2	Rain	Urban runoff
Faria County Park (#7000)	1/26/00	1/28/00	2	Rain	Urban runoff
	2/25/00	2/29/00	4	Rain	Urban runoff
	3/7/00	3/14/00	7	Rain	Urban runoff
Hollywood Beach - La Cre	2/23/00	3/1/00	7	Rain	Urban runoff
Hollywood Beach - Los Ro	2/23/00	3/1/00	7	Rain	Urban runoff
Mandalay Co. Pk. - Outrig	2/23/00	3/1/00	7	Rain	Urban runoff
	3/8/00	3/15/00	7	Rain	Urban runoff
Mandalay County Park - St	2/15/00	2/17/00	2	Rain	Urban runoff
	2/23/00	3/1/00	7	Rain	Urban runoff
	3/8/00	3/15/00	7	Rain	Urban runoff
Mandalay County Park - C	2/23/00	3/1/00	7	Rain	Urban runoff
	3/8/00	3/15/00	7	Rain	Urban runoff
Mandos Cove Beach (#800	3/7/00	3/14/00	7	Rain	Urban runoff
Marina Park Beach (#2200	1/26/00	1/28/00	2	Rain	Urban runoff
	2/25/00	2/29/00	4	Rain	Urban runoff
McGrath St..Bch- .5 mi. N	2/15/00	2/17/00	2	Rain	Urban runoff
	3/8/00	3/15/00	7	Rain	Urban runoff
	4/19/00	4/26/00	7	Rain	Urban runoff
McGrath St. Bch. - S. end	2/15/00	2/17/00	2	Rain	Urban runoff
	2/23/00	3/1/00	7	Rain	Urban runoff
	3/8/00	3/15/00	7	Rain	Urban runoff
	4/19/00	4/26/00	7	Rain	Urban runoff
McGrath State Beach - Go	1/31/00	2/9/00	9	Rain	Urban runoff
	2/15/00	2/17/00	2	Rain	Urban runoff
	2/23/00	3/1/00	7	Rain	Urban runoff
	3/8/00	3/22/00	14	Rain	Urban runoff
	4/19/00	4/26/00	7	Rain	Urban runoff
Oil Piers Beach (#4000)	4/18/00	4/25/00	7	Rain	Urban runoff
Ormond Beach - Industrial	2/15/00	2/17/00	2	Rain	Urban runoff
	2/23/00	3/15/00	21	Rain	Urban runoff
	4/19/00	4/26/00	7	Rain	Urban runoff
Ormond Beach - J St. (#42	11/1/00	11/3/00	2	Rain	Urban runoff
Oxnard Shores Beach - A	2/15/00	2/17/00	2	Rain	Urban runoff
	2/23/00	3/1/00	7	Rain	Urban runoff

BeachName	Date Closed	Date Opened	Days Closed	Cause	Source
Oxnard Shores Beach - A	3/8/00	3/15/00	7	Rain	Urban runoff
	11/1/00	11/3/00	2	Rain	Urban runoff
Oxnard State Beach - Falki	2/23/00	3/1/00	7	Rain	Urban runoff
	11/1/00	11/3/00	2	Rain	Urban runoff
Oxnard State Beach - Starf	2/23/00	3/1/00	7	Rain	Urban runoff
	3/8/00	3/10/00	2	Rain	Urban runoff
Peninsula Beach (#23000)	2/16/00	2/29/00	13	Rain	Urban runoff
	3/7/00	3/14/00	7	Rain	Urban runoff
	4/18/00	4/25/00	7	Rain	Urban runoff
	10/30/00	11/1/00	2	Rain	Urban runoff
Point Mugu State Beach (#	1/25/00	1/26/00	1	Rain	Urban runoff
Point Mugu State Beach (#	2/23/00	3/1/00	7	Rain	Urban runoff
	4/19/00	4/26/00	7	Rain	Urban runoff
Port Hueneme Beach Park	4/19/00	4/26/00	7	Rain	Urban runoff
Promenade Park - Figueroa	1/26/00	1/28/00	2	Rain	Urban runoff
	2/25/00	2/29/00	4	Rain	Urban runoff
	3/7/00	3/14/00	7	Rain	Urban runoff
	4/18/00	4/25/00	7	Rain	Urban runoff
Promenade Park - Holiday	1/26/00	1/28/00	2	Rain	Urban runoff
	2/25/00	2/29/00	4	Rain	Urban runoff
	3/7/00	3/10/00	3	Rain	Urban runoff
	4/18/00	4/25/00	7	Rain	Urban runoff
Promenade Park - Oak St.	1/26/00	1/28/00	2	Rain	Urban runoff
	2/25/00	3/10/00	14	Rain	Urban runoff
Promenade Park - Redwoo	1/26/00	1/28/00	2	Rain	Urban runoff
	2/25/00	2/29/00	4	Rain	Urban runoff
	3/7/00	3/14/00	7	Rain	Urban runoff
	4/18/00	4/25/00	7	Rain	Urban runoff
Rincon Beach - creek mou	1/26/00	1/28/00	2	Rain	Urban runoff
	2/23/00	2/28/00	5	Rain	Urban runoff
	3/7/00	3/10/00	3	Rain	Urban runoff
	4/18/00	4/25/00	7	Rain	Urban runoff
	10/30/00	11/1/00	2	Rain	Urban runoff
Rincon Beach - flagpole (#	1/26/00	1/28/00	2	Rain	Urban runoff
	2/23/00	2/28/00	5	Rain	Urban runoff
	3/7/00	3/10/00	3	Rain	Urban runoff
	4/18/00	4/25/00	7	Rain	Urban runoff
	10/30/00	11/9/00	10	Rain	Urban runoff
Rincon Beach - footpath (#	2/23/00	3/10/00	16	Rain	Urban runoff
	4/18/00	4/25/00	7	Rain	Urban runoff
Rincon Parkway - North (#	2/25/00	2/29/00	4	Rain	Urban runoff
	3/7/00	3/10/00	3	Rain	Urban runoff

BeachName	Date Closed	Date Opened	Days Closed	Cause	Source
Rincon Parkway - North (#	4/18/00	4/25/00	7	Rain	Urban runoff
San Buenaventura St. Bch.	2/25/00	2/29/00	4	Rain	Urban runoff
	3/7/00	3/10/00	3	Rain	Urban runoff
	10/30/00	11/1/00	2	Rain	Urban runoff
San Buenaventura State Bc	2/25/00	2/29/00	4	Rain	Urban runoff
San Buenventura St. Bch. -	1/26/00	1/28/00	2	Rain	Urban runoff
	2/3/00	2/4/00	1	Rain	Urban runoff
	2/25/00	2/29/00	4	Rain	Urban runoff
	3/7/00	3/10/00	3	Rain	Urban runoff
	4/18/00	4/25/00	7	Rain	Urban runoff
	10/30/00	11/1/00	2	Rain	Urban runoff
Silverstrand Beach - San N	2/23/00	3/1/00	7	Rain	Urban runoff
	11/1/00	11/3/00	2	Rain	Urban runoff
Silverstrand Beach - Santa	11/1/00	11/3/00	2	Rain	Urban runoff
Silverstrand Beach - Sawte	3/8/00	3/10/00	2	Rain	Urban runoff
	11/1/00	11/3/00	2	Rain	Urban runoff
Solimar Beach (#10000)	1/26/00	1/28/00	2	Rain	Urban runoff
	2/29/00	3/14/00	14	Rain	Urban runoff
	10/30/00	11/1/00	2	Rain	Urban runoff
Surfer's Point - "Stables" (1/26/00	2/3/00	8	Rain	Urban runoff
	2/16/00	3/14/00	27	Rain	Urban runoff
	4/18/00	4/25/00	7	Rain	Urban runoff
	4/18/00	4/25/00	7	Rain	Urban runoff

Number of Advisories: 103

Number of Advisory Days: 571

Los Angeles County - Beach Closures for 2000

BeachName	Date Closed	Date Opened	Days Closed	Beach Mile Days	Cause	Source
Abalone Cove	1/13/00	1/15/00	2	4.00	Sewer Main Break	Sewer line
Avalon Beach	2/22/00	3/25/00	32	5.34	Sewer Main Break	Sewer line
Dockweiler Beach	3/5/00	3/9/00	4	16.00	Sewer Manhole Overflow	Sewer line
	3/13/00	3/16/00	3	3.00	Sewer Main Break	Sewer line
Redondo Beach	5/13/00	5/15/00	2	4.00	Blockage Due to Debris	Sewer line
Santa Monica Beach	8/25/00	8/26/00	1	0.06	Unknown Hazardous Material Spill	Unknown
Will Rogers State Beach	5/4/00	5/5/00	1	1.25	Blockage Due to Roots	Sewer line

Number of Closures: 7

Sum of Days: 45

Sum of Beach Mile Days: 33.6

Los Angeles County - Beach Warnings Posted for 2000

BeachName	Date Posted	Date Opened	Days Posted	Beach Mile Days	Cause	Source
Avalon Beach	4/18/00	4/25/00	7	0.20	Unknown	Unknown
	5/3/00	5/9/00	6	0.17	Unknown	Unknown
	5/24/00	5/26/00	2	0.09	Unknown	Unknown
	7/18/00	8/17/00	30	1.05	Unknown	Unknown
	8/29/00	8/31/00	2	0.11	Unknown	Unknown
	9/19/00	10/5/00	16	0.35	Unknown	Unknown
	10/7/00	10/11/00	4	0.68	Sewer Manhole Overflow	Sewer line
	10/17/00	10/19/00	2	0.11	Unknown	Unknown
	10/24/00	10/26/00	2	0.06	Unknown	Unknown
Basin H	1/11/00	1/14/00	3	0.09	Unknown	Unknown
	2/9/00	2/10/00	1	0.03	Unknown	Unknown
	4/25/00	4/27/00	2	0.06	Unknown	Unknown

BeachName	Date Posted	Date Opened	Days Posted	Beach Mile Days	Cause	Source
Basin H	5/9/00	5/11/00	2	0.06	Unknown	Unknown
	5/31/00	6/2/00	2	0.06	Unknown	Unknown
	7/6/00	7/13/00	7	0.20	Unknown	Unknown
	7/25/00	8/10/00	16	0.45	Unknown	Unknown
Big Rock Beach	4/4/00	4/6/00	2	0.11	Unknown	Unknown
	4/11/00	4/13/00	2	0.11	Unknown	Unknown
	4/25/00	4/27/00	2	0.11	Unknown	Unknown
	6/20/00	6/27/00	7	0.40	Unknown	Unknown
	8/15/00	8/22/00	7	0.40	Unknown	unknown
	8/29/00	8/31/00	2	0.11	Unknown	Unknown
	9/6/00	9/8/00	2	0.11	Unknown	Unknown
	9/26/00	9/28/00	2	0.11	Unknown	Unknown
	10/3/00	10/11/00	8	0.45	Unknown	Unknown

BeachName	Date Posted	Date Opened	Days Posted	Beach Mile Days	Cause	Source
Big Rock Beach	10/17/00	10/24/00	7	0.40	Unknown	Unknown
	10/31/00	11/2/00	2	0.11	Unknown	Unknown
	11/7/00	11/9/00	2	0.11	Unknown	Unknown
	11/14/00	11/21/00	7	0.40	Unknown	Unknown
	11/28/00	12/1/00	3	0.17	Unknown	Unknown
	12/12/00	12/19/00	7	0.40	Unknown	Unknown
Bluff Cove	4/13/00	4/17/00	4	0.23	Unknown	Unknown
Cabrillo Beach	5/31/00	6/2/00	2	0.23	Unknown	Unknown
	6/5/00	6/6/00	1	0.11	Unknown	Unknown
	6/12/00	6/19/00	7	0.80	Unknown	unknown
	6/20/00	6/21/00	1	0.11	Unknown	Unknown
	7/5/00	7/5/00	1	0.11	Unknown	unknown
	7/6/00	7/10/00	4	0.45	Unknown	Unknown

BeachName	Date Posted	Date Opened	Days Posted	Beach Mile Days	Cause	Source
Cabrillo Beach	7/10/00	7/12/00	2	0.23	Unknown	Unknown
	7/17/00	7/19/00	2	0.23	Unknown	Unknown
	7/25/00	7/27/00	2	0.23	Unknown	Unknown
	7/31/00	8/10/00	10	1.14	Unknown	unknown
	8/11/00	8/14/00	3	0.34	Unknown	unknown
	8/14/00	8/17/00	3	0.34	Unknown	Unknown
	8/17/00	8/18/00	1	0.11	Unknown	Unknown
	8/21/00	8/23/00	2	0.23	Unknown	Unknown
	8/30/00	9/1/00	2	0.23	Unknown	Unknown
	9/5/00	9/6/00	1	0.11	Unknown	Unknown
	9/7/00	9/8/00	1	0.11	Unknown	Unknown
	9/11/00	9/12/00	1	0.11	Unknown	Unknown
	9/13/00	9/21/00	8	0.91	Unknown	Unknown

BeachName	Date Posted	Date Opened	Days Posted	Beach Mile Days	Cause	Source
Cabrillo Beach	10/2/00	10/5/00	3	0.34	Unknown	Unknown
	10/12/00	10/16/00	4	0.91	Unknown	Unknown
	10/12/00	10/16/00	4	0.45	Unknown	Unknown
	10/30/00	11/2/00	3	0.34	Unknown	Unknown
	11/3/00	11/6/00	3	0.34	Unknown	unknown
	11/13/00	11/13/00	1	0.11	Unknown	Unknown
	11/17/00	11/20/00	3	0.34	Unknown	unknown
	12/1/00	12/14/00	13	0.74	Unknown	Unknown
	12/7/00	12/11/00	4	0.45	Unknown	Unknown
	12/15/00	12/18/00	3	0.34	Unknown	Unknown
Cabrillo Inner	1/6/00	1/18/00	12	1.36	Unknown	Unknown
	1/24/00	1/25/00	1	0.11	Unknown	Unknown
	2/4/00	2/10/00	6	0.68	Unknown	Unknown

BeachName	Date Posted	Date Opened	Days Posted	Beach Mile Days	Cause	Source
Cabrillo Inner	3/10/00	3/23/00	13	1.48	Unknown	Unknown
	3/28/00	3/29/00	1	0.11	Unknown	Unknown
	3/30/00	4/10/00	11	1.25	Unknown	Unknown
	4/11/00	4/13/00	2	0.23	Unknown	Unknown
	4/17/00	4/24/00	7	0.80	Unknown	Unknown
	5/1/00	5/9/00	8	0.91	Unknown	Unknown
	5/17/00	5/17/00	1	0.11	Unknown	Unknown
	5/22/00	5/30/00	8	0.91	Unknown	unknown
	5/30/00	6/8/00	9	1.02	Unknown	Unknown
Corral Beach	11/28/00	12/1/00	3	0.34	Unknown	Unknown
Dan Blocker Beach	8/1/00	8/3/00	2	0.23	Unknown	Unknown
Dockweiler Beach	1/24/00	1/25/00	1	0.06	Unknown	Unknown
	1/28/00	1/31/00	3	0.34	Unknown	Unknown

BeachName	Date Posted	Date Opened	Days Posted	Beach Mile Days	Cause	Source
Dockweiler Beach	1/28/00	1/31/00	3	0.17	Unknown	Unknown
	3/28/00	4/4/00	7	1.59	Unknown	Unknown
	3/30/00	3/31/00	1	0.11	Unknown	Unknown
	4/18/00	4/20/00	2	0.45	Unknown	Unknown
	4/18/00	4/25/00	7	0.80	Unknown	Unknown
	4/19/00	4/20/00	1	0.11	Unknown	Unknown
	4/19/00	4/20/00	1	0.06	Unknown	Unknown
	4/19/00	4/25/00	6	0.68	Unknown	Unknown
	6/20/00	6/22/00	2	0.23	Unknown	Unknown
	6/20/00	6/22/00	2	0.23	Unknown	Unknown
	8/3/00	8/7/00	4	0.45	Unknown	Unknown
	8/8/00	8/10/00	2	0.23	Unknown	Unknown
	8/8/00	8/10/00	2	0.23	Unknown	Unknown

BeachName	Date Posted	Date Opened	Days Posted	Beach Mile Days	Cause	Source
Dockweiler Beach	8/8/00	8/9/00	1	0.11	Unknown	Unknown
	8/31/00	9/5/00	5	12.50	Unknown	Unknown
	9/25/00	10/2/00	7	11.00	Urban Runoff	Urban runoff
	10/30/00	11/2/00	3	1.06	Unknown	Unknown
	12/12/00	12/14/00	2	0.23	Unknown	Unknown
	12/21/00	12/21/00	1	0.11	Unknown	Unknown
	12/26/00	12/27/00	1	0.11	Unknown	Unknown
	12/26/00	12/27/00	1	0.11	Unknown	Unknown
Hermosa Beach	4/19/00	4/20/00	1	0.06	Unknown	Unknown
	9/25/00	9/25/00	1	0.06	Unknown	Unknown
	10/31/00	11/2/00	2	0.23	Unknown	Unknown
Latigo Shore	2/8/00	2/10/00	2	0.23	Unknown	Unknown
	5/31/00	6/2/00	2	0.11	Unknown	Unknown

BeachName	Date Posted	Date Opened	Days Posted	Beach Mile Days	Cause	Source
Latigo Shore	8/8/00	8/10/00	2	0.11	Unknown	Unknown
	10/31/00	11/2/00	2	0.11	Unknown	Unknown
	11/28/00	12/1/00	3	0.17	Unknown	Unknown
Malibu Pier	1/11/00	1/13/00	2	0.11	Unknown	Unknown
	3/14/00	3/21/00	7	0.40	Unknown	Unknown
	3/28/00	4/4/00	7	0.40	Unknown	Unknown
	4/11/00	4/13/00	2	0.11	Unknown	Unknown
	5/23/00	5/31/00	8	0.45	Unknown	Unknown
	7/18/00	7/20/00	2	0.11	Unknown	Unknown
	9/26/00	9/28/00	2	0.23	Unknown	Unknown
	10/31/00	11/2/00	2	0.23	Unknown	Unknown
Malibu Point	8/1/00	8/3/00	2	0.11	Unknown	Unknown
	9/6/00	9/8/00	2	0.11	Unknown	Unknown

BeachName	Date Posted	Date Opened	Days Posted	Beach Mile Days	Cause	Source
Malibu Point	11/3/00	11/6/00	3	0.34	Unknown	unknown
	12/12/00	12/14/00	2	0.11	Unknown	Unknown
Manhattan Beach	4/19/00	4/20/00	1	0.06	Unknown	Unknown
	8/23/00	8/24/00	1	0.11	Unknown	Unknown Source
	12/12/00	12/13/00	1	0.11	Unknown	Unknown
Marina del Rey Beach	1/11/00	1/18/00	7	0.40	Unknown	Unknown
	1/28/00	1/31/00	3	0.17	Unknown	Unknown
	3/3/00	3/5/00	2	0.11	Unknown	Unknown
	3/10/00	3/20/00	10	0.57	Unknown	Unknown
	3/14/00	3/28/00	14	0.40	Unknown	Unknown
	3/14/00	3/21/00	7	0.40	Unknown	Unknown
	3/22/00	4/4/00	13	0.74	Unknown	Unknown
	4/11/00	4/13/00	2	0.11	Unknown	Unknown

BeachName	Date Posted	Date Opened	Days Posted	Beach Mile Days	Cause	Source
Marina del Rey Beach	4/18/00	4/25/00	7	0.40	Unknown	Unknown
	5/23/00	5/25/00	2	0.11	Unknown	Unknown
	6/13/00	6/22/00	9	0.51	Unknown	Unknown
	7/6/00	7/13/00	7	0.40	Unknown	Unknown
	8/8/00	8/9/00	1	0.06	Unknown	Unknown
	8/15/00	8/17/00	2	0.03	Unknown	unknwon
	8/22/00	8/24/00	2	0.06	Unknown	Unknown
	8/29/00	9/4/00	6	0.17	Unknown	Unknown
	10/16/00	10/18/00	2	0.11	Unknown	Unknown
	10/30/00	10/31/00	1	0.06	Unknown	Unknown
	12/1/00	12/4/00	3	0.17	Unknown	unknown
	12/5/00	12/6/00	1	0.06	Unknown	Unknown
Nicholas Canyon Beach	6/20/00	6/22/00	2	0.23	Unknown	Unknown

BeachName	Date Posted	Date Opened	Days Posted	Beach Mile Days	Cause	Source
Paradise Cove	3/14/00	3/16/00	2	0.11	Unknown	Unknown
	8/29/00	8/31/00	2	0.23	Unknown	Unknown
	9/26/00	9/28/00	2	0.23	Unknown	Unknown
	10/31/00	11/2/00	2	0.23	Unknown	Unknown
	11/21/00	12/1/00	10	1.14	Unknown	Unknown
	12/12/00	12/19/00	7	0.80	Unknown	Unknown
Redondo Beach	1/24/00	1/25/00	1	0.06	Unknown	Unknown
	3/16/00	3/16/00	1	0.06	Unknown	Unknown
	4/3/00	4/4/00	1	0.06	Unknown	Unknown
	4/5/00	4/6/00	1	0.06	Unknown	Unknown
	4/7/00	4/10/00	3	0.17	Unknown	Unknown
	4/14/00	4/17/00	3	0.17	Unknown	Unknown Cause
	4/18/00	4/25/00	7	0.80	Unknown	Unknown

BeachName	Date Posted	Date Opened	Days Posted	Beach Mile Days	Cause	Source
Redondo Beach	5/2/00	5/4/00	2	0.23	Unknown	Unknown
	5/15/00	5/16/00	1	0.06	Unknown	Unknown
	5/22/00	5/23/00	1	0.06	Unknown	Unknown
	6/20/00	6/22/00	2	0.23	Urban Runoff	Unknown
	8/1/00	8/3/00	2	0.23	Unknown	Unknown
	8/24/00	8/28/00	4	0.23	Unknown	Unknown
	8/29/00	8/31/00	2	0.23	Unknown	Unknown
	9/13/00	9/14/00	1	0.06	Unknown	Unknown
	9/25/00	9/25/00	1	0.06	Unknown	Unknown
	9/25/00	9/26/00	1	0.11	Unknown	Unknown
	10/2/00	10/2/00	1	0.06	Unknown	Unknown
	10/11/00	10/13/00	2	0.23	Unknown	Unknown
	10/11/00	10/13/00	2	0.23	Unknown	Unknown

BeachName	Date Posted	Date Opened	Days Posted	Beach Mile Days	Cause	Source
Redondo Beach	10/11/00	10/13/00	2	0.11	Unknown	Unknown
	10/26/00	10/31/00	5	0.28	Unknown	Unknown
	11/13/00	11/16/00	3	0.34	Unknown	Unknown
	11/13/00	11/20/00	7	0.40	Unknown	Unknown
	12/11/00	12/18/00	7	0.40	Unknown	unknown
	12/12/00	12/18/00	6	0.68	Unknown	Unknown
	12/26/00	12/27/00	1	0.11	Unknown	Unknown
Santa Monica Beach	1/5/00	1/10/00	5	0.57	Unknown	Unknown
	1/5/00	1/6/00	1	0.06	Unknown	Unknown
	1/12/00	1/18/00	6	0.68	Unknown	Unknown
	1/24/00	1/25/00	1	0.06	Unknown	Unknown
	2/8/00	2/9/00	1	0.06	Unknown	Unknown
	2/9/00	2/10/00	1	0.11	Unknown	Unknown

BeachName	Date Posted	Date Opened	Days Posted	Beach Mile Days	Cause	Source
Santa Monica Beach	3/3/00	3/5/00	2	0.11	Unknown	Unknown
	3/3/00	3/5/00	2	0.11	Unknown	Unknown
	3/14/00	3/16/00	2	0.11	Unknown	Unknown
	3/16/00	3/17/00	1	0.11	Unknown	Unknown
	3/23/00	3/27/00	4	0.23	Unknown	Unknown
	3/27/00	3/28/00	1	0.11	Unknown	Unknown
	3/28/00	4/4/00	7	0.80	Unknown	Unknown
	3/29/00	3/30/00	1	0.06	Unknown	Unknown
	4/3/00	4/4/00	1	0.06	Unknown	Unknown
	4/10/00	4/11/00	1	0.11	Unknown	Unknown
	4/19/00	4/20/00	1	0.11	Unknown	Unknown
	4/19/00	5/2/00	13	1.48	Unknown	Unknown
	4/19/00	4/20/00	1	0.06	Unknown	Unknown

BeachName	Date Posted	Date Opened	Days Posted	Beach Mile Days	Cause	Source
Santa Monica Beach	4/25/00	4/27/00	2	0.23	Unknown	Unknown
	4/25/00	4/27/00	2	0.23	Unknown	Unknown
	4/25/00	4/26/00	1	0.06	Unknown	Unknown
	4/27/00	4/28/00	1	0.06	Unknown	Unknown
	5/3/00	5/4/00	1	0.06	Unknown	Unknown
	5/5/00	5/9/00	4	0.45	Unknown	Unknown
	5/16/00	5/17/00	1	0.11	Unknown	unknown
	5/23/00	5/24/00	1	0.11	Unknown	Unknown
	5/23/00	5/25/00	2	0.23	Unknown	Unknown
	5/30/00	6/5/00	6	0.68	Unknown	Unknown
	6/14/00	6/15/00	1	0.11	Construction Project	Storm drain
	6/28/00	6/29/00	1	0.06	Unknown	Unknown
	6/30/00	7/3/00	3	0.17	Unknown	unknown

BeachName	Date Posted	Date Opened	Days Posted	Beach Mile Days	Cause	Source
Santa Monica Beach	7/27/00	7/31/00	4	0.23	Unknown	Unknown
	8/1/00	8/3/00	2	0.23	Unknown	Unknown
	9/1/00	9/3/00	2	0.11	Unknown	unknown
	9/27/00	9/28/00	1	0.11	Unknown	Unknown
	10/11/00	10/12/00	1	0.06	Unknown	Unknown
	10/16/00	10/16/00	1	0.06	Unknown	Unknown
	10/18/00	10/18/00	1	0.06	Unknown	unknown
	10/24/00	10/24/00	1	0.06	Unknown	Unknown
	10/25/00	10/26/00	1	0.06	Unknown	Unknown
	10/30/00	11/2/00	3	0.34	Unknown	Unknown
	10/31/00	11/2/00	2	0.23	Unknown	Unknown
	10/31/00	11/2/00	2	0.23	Unknown	Unknown
	10/31/00	11/2/00	2	0.11	Unknown	Unknown

BeachName	Date Posted	Date Opened	Days Posted	Beach Mile Days	Cause	Source
Santa Monica Beach	10/31/00	11/2/00	2	0.23	Unknown	Unknown
	11/13/00	11/13/00	1	0.06	Unknown	Unknown
	11/13/00	11/13/00	1	0.11	Unknown	Unknown
	11/14/00	11/16/00	2	0.23	Unknown	Unknown
	11/20/00	11/22/00	2	0.11	Unknown	Unknown
	11/20/00	11/21/00	1	0.11	Unknown	Unknown
	12/12/00	12/14/00	2	0.11	Unknown	Unknown
	12/19/00	12/26/00	7	0.80	Unknown	Unknown
Surfrider Beach	12/26/00	12/27/00	1	0.11	Unknown	Unknown
	1/11/00	1/13/00	2	0.23	Unknown	Unknown
	1/28/00	1/31/00	3	0.17	Unknown	Unknown
	2/4/00	2/8/00	4	0.45	Unknown	Unknown
	2/9/00	2/10/00	1	0.06	Unknown	Unknown

BeachName	Date Posted	Date Opened	Days Posted	Beach Mile Days	Cause	Source
Surfrider Beach	3/10/00	3/17/00	7	0.57	Unknown	Unknown
	3/14/00	3/21/00	7	0.57	Unknown	Unknown
	3/27/00	4/3/00	7	0.74	Unknown	Unknown
	3/28/00	4/4/00	7	0.80	Unknown	Unknown
	4/10/00	4/13/00	3	0.28	Unknown	Unknown
	4/18/00	5/4/00	16	1.36	Unknown	Unknown
	5/8/00	5/8/00	1	0.06	Unknown	Unknown
	5/10/00	5/12/00	2	0.11	Unknown	Unknown
	5/15/00	5/16/00	1	0.06	Unknown	Unknown
	5/19/00	6/1/00	13	1.19	Unknown	unknown
	6/8/00	6/9/00	1	0.06	Unknown	Unknown
	6/12/00	6/22/00	10	1.25	Unknown	Unknown
	6/27/00	6/28/00	1	0.06	Unknown	Unknown

BeachName	Date Posted	Date Opened	Days Posted	Beach Mile Days	Cause	Source
Surfrider Beach	6/30/00	7/3/00	3	0.17	Unknown	unknown
	7/3/00	7/5/00	2	0.11	Unknown	unknown
	7/6/00	7/21/00	15	1.99	Unknown	Unknown
	7/24/00	7/25/00	1	0.06	Unknown	Unknown
	7/25/00	8/3/00	9	1.48	Unknown	Unknown
	8/8/00	8/10/00	2	0.45	Unknown	Unknown
	8/14/00	8/21/00	7	0.77	Unknown	unknown
	8/22/00	8/24/00	2	0.11	Unknown	Unknown
	9/21/00	9/22/00	1	0.11	Unknown	Unknown
	10/2/00	10/2/00	1	0.11	Unknown	Unknown
	11/8/00	11/14/00	6	0.68	Unknown	Unknown
	11/15/00	11/21/00	6	0.68	Unknown	Unknown
	11/27/00	12/26/00	29	3.30	Unknown	Unknown

BeachName	Date Posted	Date Opened	Days Posted	Beach Mile Days	Cause	Source
Topanga Beach	3/14/00	3/16/00	2	0.23	Unknown	Unknown
	4/10/00	4/13/00	3	0.17	Unknown	Unknown
	4/19/00	4/20/00	1	0.11	Unknown	Unknown
	5/12/00	5/15/00	3	0.17	Unknown	Unknown
	5/23/00	5/24/00	1	0.06	Unknown	Unknown
	11/22/00	12/4/00	12	1.36	Unknown	Unknown
	12/21/00	12/26/00	5	0.57	Unknown	Unknown
Torrance Beach	3/10/00	3/13/00	3	0.17	Unknown	Unknown
Venice Beach	1/6/00	1/10/00	4	0.45	Unknown	Unknown
	2/8/00	2/10/00	2	0.23	Unknown	Unknown
	4/4/00	4/6/00	2	0.11	Unknown	Unknown
	4/19/00	4/20/00	1	0.11	Unknown	Unknown
	5/23/00	5/25/00	2	0.23	Unknown	Unknown

BeachName	Date Posted	Date Opened	Days Posted	Beach Mile Days	Cause	Source
Venice Beach	6/6/00	6/12/00	6	0.68	Unknown	Unknown
	7/6/00	7/11/00	5	0.57	Unknown	Unknown
	8/1/00	8/3/00	2	0.23	Unknown	Unknown
	9/25/00	9/26/00	1	0.11	Unknown	Unknown
	9/26/00	9/28/00	2	0.23	Unknown	Unknown
	10/31/00	11/2/00	2	0.23	Unknown	Unknown
	10/31/00	11/1/00	1	0.17	Unknown	Unknown
	10/31/00	11/2/00	2	0.23	Unknown	Unknown
	11/16/00	11/21/00	5	0.57	Unknown	Unknown
	12/5/00	12/7/00	2	0.23	Unknown	Unknown
Will Rogers State Beach	1/12/00	1/18/00	6	0.68	Unknown	Unknown
	3/10/00	3/16/00	6	0.34	Unknown	Unknown
	3/13/00	3/14/00	1	0.11	Unknown	Unknown

BeachName	Date Posted	Date Opened	Days Posted	Beach Mile Days	Cause	Source
Will Rogers State Beach	3/16/00	3/16/00	1	0.11	Unknown	Unknown
	4/10/00	4/12/00	2	0.23	Unknown	Unknown
	4/11/00	4/13/00	2	0.23	Unknown	Unknown
	4/13/00	4/14/00	1	0.11	Unknown	Unknown
	4/19/00	4/20/00	1	0.11	Unknown	Unknown
	4/19/00	4/21/00	2	0.23	Unknown	Unknown
	4/24/00	4/25/00	1	0.11	Unknown	Unknown
	5/2/00	5/4/00	2	0.23	Unknown	Unknown
	5/8/00	5/8/00	1	0.11	Unknown	Unknown
	5/9/00	5/11/00	2	0.23	Unknown	Unknown
	5/31/00	6/2/00	2	0.23	Unknown	Unknown
	6/20/00	6/22/00	2	0.23	Unknown	Unknown
	6/20/00	6/21/00	1	0.11	Unknown	Unknown

BeachName	Date Posted	Date Opened	Days Posted	Beach Mile Days	Cause	Source
Will Rogers State Beach	7/10/00	7/11/00	1	0.11	Unknown	Unknown
	7/12/00	7/19/00	7	0.80	Unknown	Unknown
	7/19/00	7/21/00	2	0.23	Unknown	Unknown
	7/31/00	8/1/00	1	0.11	Unknown	Unknown
	8/7/00	8/10/00	3	0.34	Unknown	Unknown
	8/8/00	8/9/00	1	0.11	Unknown	Unknown
	8/8/00	8/10/00	2	0.23	Unknown	Unknown
	8/10/00	8/14/00	4		Unknown	unknown
	8/22/00	8/23/00	1	0.11	Unknown	Unknown
	8/22/00	8/29/00	7	0.80	Unknown	Unknown
	8/30/00	9/5/00	6	0.68	Unknown	Unknown
	9/12/00	9/13/00	1	0.11	Unknown	Unknown
	9/18/00	9/19/00	1	0.11	Unknown	unknown

BeachName	Date Posted	Date Opened	Days Posted	Beach Mile Days	Cause	Source
Will Rogers State Beach	9/26/00	10/3/00	7	0.80	Unknown	Unknown
	10/11/00	10/13/00	2	0.11	Unknown	Unknown
	10/11/00	10/13/00	2	0.23	Unknown	Unknown
	10/11/00	10/17/00	6	0.68	Unknown	Unknown
	10/18/00	10/24/00	6	0.68	Unknown	Unknown
	10/30/00	11/2/00	3	0.34	Unknown	Unknown
	10/31/00	11/2/00	2	0.23	Unknown	Unknown
	10/31/00	11/2/00	2	0.23	Unknown	Unknown
	11/28/00	12/1/00	3	0.34	Unknown	Unknown
	11/29/00	12/7/00	8	0.91	Unknown	Unknown
	12/11/00	12/11/00	1	0.11	Unknown	Unknown
	12/22/00	12/26/00	4	0.45	Unknown	Unknown
	12/29/00	12/31/00	2	0.11	Unknown	Unknown

BeachName	Date Posted	Date Opened	Days Posted	Beach Mile Days	Cause	Source
Zuma Beach	8/22/00	8/24/00	2	0.23	Unknown	Unknown

Number of Postings: 325

Sum of Days: 1150

Sum of Beach Mile Days: 126.0

Los Angeles County - Rain Advisories for 2000

BeachName	Date Closed	Date Opened	Days Closed	Cause	Source
All Beaches	1/18/00	1/20/00	2	Rain	Storm drain
	1/25/00	1/28/00	3	Rain	Rain
	1/31/00	2/3/00	3	Rain	Rain
	2/10/00	3/2/00	21	Rain	Rain
	3/5/00	3/9/00	4	Rain	Rain
	4/17/00	4/21/00	4	Rain	Rain
	8/29/00	8/31/00	2	Rain	Rain
	9/23/00	9/26/00	3	Rain	Rain
	10/26/00	11/2/00	7	Rain	Rain

Number of Advisories: 9

Number of Advisory Days: 49

City of Long Beach Health Dept - Beach Warnings Posted for 2000

BeachName	Date Posted	Date Opened	Days Posted	Beach Mile Days	Cause	Source
10th Place Beach	4/4/00	4/5/00	1	0.03	Unknown	Unknown
	6/13/00	6/14/00	1	0.03	Unknown	Unknown
	8/22/00	8/23/00	1	0.03	Unknown	Unknown
	9/26/00	9/28/00	2	0.06	Unknown	Unknown
	10/17/00	10/18/00	1	0.03	Unknown	Unknown
16th Place-Beach	12/12/00	12/14/00	2	0.06	Unknown	Unknown
	1/4/00	1/5/00	1	0.03	Unknown	Unknown
	5/2/00	5/3/00	1	0.03	Unknown	Unknown
	5/9/00	5/10/00	1	0.03	Unknown	Unknown
	6/13/00	6/15/00	2	0.06	Unknown	Unknown
	8/1/00	8/2/00	1	0.03	Unknown	Unknown
	9/12/00	9/13/00	1	0.03	Unknown	Unknown

BeachName	Date Posted	Date Opened	Days Posted	Beach Mile Days	Cause	Source
16th Place-Beach	9/19/00	9/21/00	2	0.06	Unknown	Unknown
1st and Bayshore	5/2/00	5/3/00	1	0.03	Unknown	Unknown
2nd St Bridge & Bayshore	5/16/00	5/17/00	1	0.03	Unknown	Unknown
	10/5/00	10/6/00	1	0.03	Unknown	Unknown
36th Place-Beach	1/4/00	1/5/00	1	0.03	Unknown	Unknown
	4/4/00	4/5/00	1	0.03	Unknown	Unknown
	8/15/00	8/16/00	1	0.03	Unknown	Unknown
	8/22/00	8/23/00	1	0.03	Unknown	Unknown
3rd Place Beach	1/4/00	1/5/00	1	0.03	Unknown	Unknown
	4/25/00	4/26/00	1	0.03	Unknown	Unknown
	5/2/00	5/3/00	1	0.03	Unknown	Unknown
	6/6/00	6/7/00	1	0.03	Unknown	Unknown
	6/13/00	6/16/00	3	0.09	Unknown	Unknown

BeachName	Date Posted	Date Opened	Days Posted	Beach Mile Days	Cause	Source
3rd Place Beach	8/29/00	8/30/00	1	0.03	Unknown	Unknown
	10/5/00	10/7/00	2	0.06	Unknown	Unknown
	11/28/00	11/30/00	2	0.06	Unknown	Unknown
	12/12/00	12/16/00	4	0.11	Unknown	Unknown
54th Place Beach	1/11/00	1/12/00	1	0.03	Unknown	Unknown
	5/23/00	5/24/00	1	0.03	Unknown	Unknown
	6/27/00	6/28/00	1	0.03	Unknown	Unknown
	8/15/00	8/16/00	1	0.03	Unknown	Unknown
	9/19/00	9/20/00	1	0.03	Unknown	Unknown
56th Place on Bayside	10/24/00	10/25/00	1	0.03	Unknown	Unknown
	11/14/00	11/15/00	1	0.03	Unknown	Unknown
5TH Place Beach	5/2/00	5/3/00	1	0.03	Unknown	Unknown
	11/7/00	11/8/00	1	0.03	Unknown	Unknown

BeachName	Date Posted	Date Opened	Days Posted	Beach Mile Days	Cause	Source
5TH Place Beach	12/12/00	12/14/00	2	0.06	Unknown	Unknown
62nd Place Beach	10/17/00	10/19/00	2	0.06	Unknown	Unknown
72nd Place Beach	9/19/00	9/20/00	1	0.03	Unknown	Unknown
Belmont Pier-eastside	5/9/00	5/10/00	1	0.03	Unknown	Unknown
	5/31/00	6/1/00	1	0.03	Unknown	Unknown
	7/6/00	7/7/00	1	0.03	Unknown	Unknown
	8/8/00	8/9/00	1	0.03	Unknown	Unknown
	12/12/00	12/14/00	2	0.06	Unknown	Unknown
Belmont Pier-west side	1/4/00	1/5/00	1	0.03	Unknown	Unknown
	5/2/00	5/4/00	2	0.06	Unknown	Unknown
	9/19/00	9/22/00	3	0.09	Unknown	Unknown
	12/12/00	12/13/00	1	0.03	Unknown	Unknown
Colorado Lagoon-Center	1/4/00	1/5/00	1	0.03	Unknown	Unknown

BeachName	Date Posted	Date Opened	Days Posted	Beach Mile Days	Cause	Source
Colorado Lagoon-Center	7/18/00	7/19/00	1	0.03	Unknown	Unknown
	7/25/00	7/26/00	1	0.03	Unknown	Unknown
	8/8/00	8/9/00	1	0.03	Unknown	Unknown
	8/15/00	8/22/00	7	0.20	Unknown	Unknown
	8/29/00	9/1/00	3	0.09	Unknown	Unknown
	9/12/00	9/13/00	1	0.03	Unknown	Unknown
	9/19/00	9/20/00	1	0.03	Unknown	Unknown
	10/10/00	10/11/00	1	0.03	Unknown	Unknown
Colorado Lagoon-north	2/8/00	2/9/00	1	0.03	Unknown	Unknown
	7/25/00	7/26/00	1	0.03	Unknown	Unknown
	8/1/00	8/2/00	1	0.03	Unknown	Unknown
	8/8/00	8/9/00	1	0.03	Unknown	Unknown
	8/15/00	8/24/00	9	0.26	Unknown	Unknown

BeachName	Date Posted	Date Opened	Days Posted	Beach Mile Days	Cause	Source
Colorado Lagoon-north	8/29/00	9/2/00	4	0.11	Unknown	Unknown
	9/12/00	9/13/00	1	0.03	Unknown	Unknown
	9/19/00	9/21/00	2	0.06	Unknown	Unknown
	9/26/00	9/28/00	2	0.06	Unknown	Unknown
colorado lagoon-south	7/6/00	7/7/00	1	0.03	Unknown	Unknown
	7/18/00	7/19/00	1	0.03	Unknown	Unknown
	7/25/00	7/26/00	1	0.03	Unknown	Unknown
	8/1/00	8/2/00	1	0.03	Unknown	Unknown
	8/8/00	8/9/00	1	0.03	Unknown	Unknown
	8/15/00	8/24/00	9	0.26	Unknown	Unknown
	8/29/00	9/1/00	3	0.09	Unknown	Unknown
	9/6/00	9/12/00	6	0.17	Unknown	Unknown
	9/19/00	9/23/00	4	0.11	Unknown	Unknown

BeachName	Date Posted	Date Opened	Days Posted	Beach Mile Days	Cause	Source
colorado lagoon-south	9/26/00	9/27/00	1	0.03	Unknown	Unknown
	10/5/00	10/10/00	5	0.14	Unknown	Unknown
	10/10/00	10/11/00	1	0.03	Unknown	Unknown
	10/17/00	10/18/00	1	0.03	Unknown	Unknown
Coronado Ave-Beach	1/4/00	1/5/00	1	0.03	Unknown	Unknown
	5/2/00	5/3/00	1	0.03	Unknown	Unknown
Granada Ave Beach	1/4/00	1/5/00	1	0.03	Unknown	Unknown
	4/4/00	4/5/00	1	0.03	Unknown	Unknown
	9/19/00	9/20/00	1	0.03	Unknown	Unknown
	12/12/00	12/13/00	1	0.03	Unknown	Unknown
Molino Ave-Beach	1/4/00	1/5/00	1	0.03	Unknown	Unknown
	1/11/00	1/12/00	1	0.03	Unknown	Unknown
	5/9/00	5/10/00	1	0.03	Unknown	Unknown

BeachName	Date Posted	Date Opened	Days Posted	Beach Mile Days	Cause	Source
Molino Ave-Beach	6/13/00	6/14/00	1	0.03	Unknown	Unknown
	11/14/00	11/16/00	2	0.06	Unknown	Unknown
	12/12/00	12/13/00	1	0.03	Unknown	Unknown
Mothers Beach	8/8/00	8/9/00	1	0.03	Unknown	Unknown
	8/22/00	8/23/00	1	0.03	Unknown	Unknown
	9/19/00	9/21/00	2	0.06	Unknown	Unknown
	10/5/00	10/6/00	1	0.03	Unknown	Unknown
Prospect Ave-Beach	1/4/00	1/5/00	1	0.03	Unknown	Unknown
	12/12/00	12/13/00	1	0.03	Unknown	Unknown

Number of Postings: 99
Sum of Days: 161
Sum of Beach Mile Days: 4.6

Orange County Environmental Health - Beach Closures for 2000

BeachName	Date Closed	Date Opened	Days Closed	Beach Mile Days	Cause	Source
Aliso Beach	1/5/00	1/7/00	2	0.11	Blockage	Sewer line
Aliso County Beach Park	2/17/00	2/21/00	4	1.52	Blockage Due to Debris	Sewer line
	4/13/00	4/15/00	2	0.11	Blockage Due to Roots	Sewer line
	7/29/00	8/1/00	3	1.14	Line Break	Sewer line
Capistrano County Beach	5/14/00	5/17/00	3	1.50	Line Break	Sewer line
	6/26/00	6/29/00	3	0.11	Blockage Due to Roots	Sewer line
Dana Point Harbor	1/5/00	1/8/00	3	0.09	Line Break	Sewer line
	4/4/00	4/6/00	2	0.06	Blockage Due to Grease and roots	Sewer line
	7/12/00	7/14/00	2	0.04	Blockage	Sewer line
	8/5/00	8/10/00	5	0.21	Blockage Due to Rocks	Sewer line
	8/28/00	8/31/00	3	0.06	Pump Station Failure	Sewer line
	10/11/00	10/15/00	4	0.11	Blockage Due to Roots	Sewer line

BeachName	Date Closed	Date Opened	Days Closed	Beach Mile Days	Cause	Source
Doheny State Beach Park	1/31/00	2/9/00	9	4.50	Blockage	Sewer line
	2/19/00	2/24/00	5	1.89	Blockage Due to Grease	Sewer line
	3/2/00	3/9/00	7	2.65	Blockage	Sewer line
	3/11/00	3/23/00	12	13.20	Blockage	Sewer line
Huntington Harbour	1/4/00	1/6/00	2	0.09	Blockage	Sewer line
	12/11/00	12/14/00	3	0.13	Pump Station Failure	Sewer line
Laguna Beach	2/14/00	2/21/00	7	2.27	Blockage Due to Grease	Sewer line
	2/28/00	3/4/00	5	3.50	Construction Project	Sewer line
	3/5/00	3/9/00	4	2.00	Blockage Due to Roots	Sewer line
	5/14/00	5/17/00	3	0.17	Line Break	Sewer line
	7/15/00	7/18/00	3	0.17	Sewer Infiltration	Sewer line
	11/24/00	11/29/00	5	2.50	Blockage Due to Roots	Sewer line
Monarch Beach	4/26/00	4/28/00	2	0.23	Blockage Due to Debris	Sewer line

BeachName	Date Closed	Date Opened	Days Closed	Beach Mile Days	Cause	Source
Newport Bay	1/2/00	1/5/00	3	0.75	Blockage Due to Roots and Grease	Sewer line
	1/7/00	1/11/00	4	0.11	Blockage	Sewer line
	5/4/00	5/7/00	3	0.17	Blockage	Sewer line
	9/11/00	9/14/00	3	0.17	Pump Station Failure	Sewer line
	9/20/00	9/22/00	2	0.06	Blockage	Sewer line
	11/13/00	11/15/00	2	0.11	Blockage Due to Grease	Sewer line
	12/8/00	12/10/00	2	0.17	Line Break	Sewer line
	12/28/00	12/31/00	3	0.26	Blockage Due to Grease	Sewer line
Newport Beach	5/9/00	5/11/00	2	1.00	Other- Valve Failure at Pump Sation	Sewer line
Poche Beach	2/10/00	2/14/00	4	2.00	Blockage	Sewer line
San Clemente City Beach	10/26/00	10/30/00	4	1.52	Blockage Due to Roots	Sewer line
Seal Beach	2/22/00	2/28/00	6	3.00	Blockage	Sewer line
	3/19/00	3/23/00	4	2.98	Other - Air Vac Line	Sewer line

BeachName	Date Closed	Date Opened	Days Closed	Beach Mile Days	Cause	Source
Seal Beach	4/24/00	4/27/00	3	0.75	Blockage	Sewer line
	6/9/00	6/13/00	4	2.00	Blockage	Sewer line

Number of Closures: 40

Sum of Days: 152

Sum of Beach Mile Days: 53.4

SWRCB for San Diego County DEH - Beach Closures for 2000

BeachName	Date Closed	Date Opened	Days Closed	Beach Mile Days	Cause	Source
Cardiff State Beach	7/10/00	7/14/00	4	0.30	Other - construction project	Sewage
Coronado City Beach	2/24/00	2/28/00	4	0.76	Urban Runoff / Tijuana River	Creeks/Rivers-Wet River
	4/19/00	4/21/00	2	0.38	Urban Runoff / Tijuana River	Creeks/Rivers-Wet River
Del Mar City Beach	8/14/00	8/18/00	4	0.30	Blockage due to Roots / storm drain	Sewage
Encinitas City Beach	2/28/00	3/2/00	3	0.11	Private Overflow	Sewage
Imperial Beach City Beach	2/21/00	3/1/00	9	11.93	Urban Runoff / Tijuana River	Creeks/Rivers-Wet River
	3/6/00	3/10/00	4	5.30	Urban Runoff / Tijuana River	Creeks/Rivers-Wet River
	3/10/00	3/13/00	3	1.42	Urban Runoff / Tijuana River	Creeks/Rivers-Wet River
	3/16/00	3/23/00	7	9.28	Urban Runoff / Tijuana River	Creeks/Rivers-Wet River
La Jolla Community Beach	1/24/00	1/27/00	3	0.11	Blockage due to Debris	Sewage
	5/17/00	5/19/00	2	0.11	Private Overflow	Sewage
	5/26/00	5/28/00	2	0.11	Blockage Due to Roots	Sewage

BeachName	Date Closed	Date Opened	Days Closed	Beach Mile Days	Cause	Source
La Jolla Shores Beach	9/29/00	10/2/00	3	0.31	Blockage due to Roots	Sewage
Mission Bay	1/5/00	1/8/00	3	0.11	Private Overflow	Sewage
	2/16/00	4/7/00	51	48.26	Urban Runoff / Tijuana River	Creeks/Rivers-Wet
	6/17/00	6/21/00	4	0.19	Line Break	Sewage
	10/3/00	10/5/00	2	1.97	Debris blockage / Playas De Tijuana sewer line	Sewage
Ocean Beach	2/28/00	3/3/00	4	4.55	Flood Damage	Creeks/Rivers-Wet
	4/10/00	4/14/00	4	0.23	Blockage due to Grease / San Diego River	Sewage
	4/12/00	5/15/00	33	31.52	Diversion shut down / Tijuana River	Creeks/Rivers-Dry
	7/27/00	7/29/00	2	0.15	Construction Project / San Diego River	Sewage
	10/27/00	11/3/00	7	0.53	Private Overflow / San Diego River	Sewage
Oceanside / Carlsbad border	1/31/00	2/8/00	8	0.00	Line Break	Creeks/Rivers-Wet
	1/31/00	2/8/00	8	0.91	Vandalism	Creeks/Rivers-Wet
	2/11/00	2/22/00	11	1.25	Line Break	Creeks/Rivers-Wet

BeachName	Date Closed	Date Opened	Days Closed	Beach Mile Days	Cause	Source
Oceanside / Carlsbad border	3/20/00	3/23/00	3	0.17	Blockage Due to Grease	Sewage
Oceanside City Beach	7/12/00	7/13/00	1	0.09	Blockage Due to Grease	Sewage
San Diego Bay	3/21/00	3/24/00	3	0.85	Vandal Activities	Sewage
	6/24/00	6/28/00	4	0.23	Blockage due to Debris	Sewage
	7/31/00	8/2/00	2	0.11	Blockage due to Grease / Switzer St storm drain	Sewage
	9/13/00	9/15/00	2	0.11	Blockage due to Roots	Sewage
	11/12/00	11/18/00	6	0.34	Blockage due to Roots	Sewage
San Diego County Coastline	10/28/00	11/23/00	26	24.62	Urban Runoff / Tijuana River	Creeks/Rivers-Wet
San Onofre State Beach	3/6/00	3/21/00	15	0.85	Power Failure	Sewage
	3/6/00	3/14/00	8	0.45	Sewer Main Break / San Onofre Creek	Unknown
Silver Strand State Beach	2/24/00	3/1/00	6	11.36	Urban Runoff / Tijuana River	Creeks/Rivers-Wet
Silver Strand State Beach and Imperial Beach	4/18/00	4/21/00	3	9.66	Urban Runoff / Tijuana River	Creeks/Rivers-Wet
Solana Beach City Beach	5/11/00	5/13/00	2	0.11	Line Break	Sewage

BeachName	Date Closed	Date Opened	Days Closed	Beach Mile Days	Cause	Source
South Carlsbad State Beach	11/21/00	11/23/00	2	0.11	Blockage due to Grease / San Marcos Creek	Sewage
Sunset Cliffs Park	2/22/00	2/25/00	3	0.57	Storm Surcharging	Sewage
Tijuana Slough Nat'l Wildlife Refuge Shoreline	1/8/00	1/24/00	16	15.76	Diversion shut down / Tijuana River	Creeks/Rivers-Wet
Torrey Pines City Beach	1/31/00	2/3/00	3	0.23	Pump Station Failure	Creeks/Rivers-Wet
Torrey Pines State Beach	2/24/00	2/26/00	2	0.15	Blockage Due to Debris	Sewage
	5/30/00	6/4/00	5	0.34	Blockage Due to Rocks	Sewage
	8/15/00	8/18/00	3	0.17	Root blockage / Los Penasquitos Lagoon	
	10/11/00	10/15/00	4	0.30	Private Overflow / Soledad Creek	Sewage
Tourmaline Surf Park	9/18/00	9/22/00	4	0.30	Blockage due to Roots	Sewage

Number of Closures: 47
Sum of Days: 310
Sum of Beach Mile Days: 187.0

SWRCB for San Diego County DEH - Beach Warnings Posted for 2000

BeachName	Date Posted	Date Opened	Days Posted	Beach Mile Days	Cause	Source
Agua Hedionda Lagoon	8/3/00	8/4/00	1	0.06	Bacterial levels Exceed Standards	Unknown
Border Field State Park	9/6/00	9/8/00	2	0.11	Bacterial levels Exceed Standards	Unknown
Cardiff State Beach	4/28/00	5/1/00	3	0.23	Outlet Excavation / San Elijo Lagoon	Urban runoff-Dry
Coronado Municipal Beach	4/14/00	4/14/00	1	0.06	Bacterial levels Exceed Standards	Unknown
	5/24/00	5/26/00	2	0.11	Bacterial levels Exceed Standards	Unknown
	5/24/00	6/15/00	22	20.68	Bacterial levels Exceed Standards	Unknown
	6/22/00	6/23/00	1	0.06	Bacterial levels Exceed Standards	Unknown
	7/12/00	7/13/00	1	0.06	Bacterial levels Exceed Standards	Unknown
	8/2/00	8/4/00	2	0.15	Abandoned Waste	Domestic/Ag animals
	9/22/00	9/25/00	3	0.17	Bacterial levels Exceed Standards	Unknown
Del Mar City Beach	2/23/00	3/11/00	17	1.21	Lagoon Opening	Creeks/Rivers-Wet
	4/5/00	4/6/00	1	0.06	Bacterial levels Exceed Standards	Unknown

BeachName	Date Posted	Date Opened	Days Posted	Beach Mile Days	Cause	Source
Del Mar City Beach	4/18/00	4/24/00	6	0.45	Lagoon Opening	Urban runoff-Wet
	7/6/00	7/8/00	2	0.11	Bacterial levels Exceed Standards	Unknown
	9/23/00	9/30/00	7	0.53	Outlet Excavation / San Dieguito River	Urban runoff-Dry
Encinitas City Beach	5/23/00	6/4/00	12	0.63	Bacterial levels Exceed Standards	Unknown
	6/15/00	6/18/00	3	0.17	Bacterial levels Exceed Standards	Unknown
	8/8/00	8/24/00	16	0.91	Bacterial levels Exceed Standards	Unknown
	8/22/00	8/24/00	2	0.11	Bacterial levels Exceed Standards	Unknown
	8/30/00	9/5/00	6	0.34	Bacterial levels Exceed Standards	Unknown
	9/19/00	9/28/00	9	0.51	Bacterial levels Exceed Standards	Unknown
	10/10/00	11/7/00	28	1.53	Bacterial levels Exceed Standards	Unknown
	12/5/00	12/6/00	1	0.06	Bacterial levels Exceed Standards	Unknown
Imperial Beach City Beach	4/6/00	4/7/00	1	0.06	Bacterial levels Exceed Standards	Unknown
	5/25/00	5/26/00	1	1.33	Precautionary / Playas De Tijuana, south swell	Urban runoff-Dry

BeachName	Date Posted	Date Opened	Days Posted	Beach Mile Days	Cause	Source
Imperial Beach City Beach	7/6/00	7/8/00	2	0.11	Bacterial levels Exceed Standards	Unknown
	9/6/00	9/8/00	2	0.11	Bacterial levels Exceed Standards	Unknown
	10/26/00	10/28/00	2	0.11	Bacterial levels Exceed Standards	Unknown
	11/15/00	11/17/00	2	0.11	Bacterial levels Exceed Standards	Unknown
	11/30/00	12/1/00	1	0.06	Bacterial levels Exceed Standards	Unknown
	12/13/00	12/15/00	2	0.11	Bacterial levels Exceed Standards	Unknown
La Jolla Community Beach	12/13/00	12/15/00	2	0.11	Bacterial levels Exceed Standards	Unknown
	1/4/00	1/5/00	1	0.03	Bacterial levels Exceed Standards	Unknown
	1/19/00	1/21/00	2	0.06	Bacterial levels Exceed Standards	Unknown
	2/1/00	2/3/00	2	0.06	Bacterial levels Exceed Standards	Unknown
	2/8/00	2/10/00	2	0.11	Bacterial levels Exceed Standards	Unknown
	5/3/00	5/5/00	2	0.11	Bacterial levels Exceed Standards	Unknown
	5/16/00	5/19/00	3	0.17	Bacterial levels Exceed Standards	Unknown

BeachName	Date Posted	Date Opened	Days Posted	Beach Mile Days	Cause	Source
La Jolla Community Beach	6/21/00	6/22/00	1	0.06	Bacterial levels Exceed Standards	Unknown
	8/15/00	8/23/00	8	7.88	Bacterial levels Exceed Standards	Unknown
	8/17/00	8/18/00	1	0.06	Bacterial levels Exceed Standards	Unknown
	8/31/00	9/1/00	1	0.06	Bacterial levels Exceed Standards	Unknown
	9/14/00	9/18/00	4	0.23	Bacterial levels Exceed Standards	Unknown
	9/20/00	9/22/00	2	0.11	Precautionary	Unknown
La Jolla Shores	1/12/00	1/14/00	2	0.09	Dredge Discharge	Urban runoff-Wet
La Jolla Shores Beach	1/19/00	1/21/00	2	0.06	Bacterial levels Exceed Standards	Unknown
	2/1/00	2/3/00	2	0.06	Bacterial levels Exceed Standards	Unknown
	3/7/00	3/9/00	2	0.11	Bacterial levels Exceed Standards	Unknown
	3/21/00	3/25/00	4	0.23	Outlet Excavation / storm drain	Urban runoff-Dry
	7/27/00	7/29/00	2	0.11	Bacterial levels Exceed Standards	Unknown
	8/1/00	8/3/00	2	0.11	Bacterial levels Exceed Standards	Unknown

BeachName	Date Posted	Date Opened	Days Posted	Beach Mile Days	Cause	Source
La Jolla Shores Beach	9/20/00	9/22/00	2	0.11	Bacterial levels Exceed Standards	Unknown
Mission Bay	1/1/00	1/13/00	12	0.34	Bacterial levels Exceed Standards	Unknown
	1/1/00	4/27/00	117	3.24	Bacterial levels Exceed Standards	Unknown
	1/1/00	3/10/00	69	1.96	Bacterial levels Exceed Standards	Unknown
	1/1/00	4/14/00	104	2.95	Bacterial levels Exceed Standards	Unknown
	1/1/00	4/14/00	104	2.95	Bacterial levels Exceed Standards	Unknown
	1/6/00	1/13/00	7	0.20	Bacterial levels Exceed Standards	Unknown
	1/7/00	1/9/00	2	0.06	Bacterial levels Exceed Standards	Unknown
	1/7/00	1/9/00	2	0.06	Bacterial levels Exceed Standards	Unknown
	1/13/00	1/15/00	2	0.06	Bacterial levels Exceed Standards	Unknown
	1/20/00	5/7/00	108	2.95	Bacterial levels Exceed Standards	Unknown
	1/27/00	1/28/00	1	0.03	Bacterial levels Exceed Standards	Unknown
	1/27/00	5/5/00	99	2.70	Bacterial levels Exceed Standards	Unknown

BeachName	Date Posted	Date Opened	Days Posted	Beach Mile Days	Cause	Source
Mission Bay	1/27/00	1/31/00	4	0.11	Bacterial levels Exceed Standards	Unknown
	1/28/00	1/31/00	3	0.09	Bacterial levels Exceed Standards	Unknown
	1/28/00	1/31/00	3	0.09	Bacterial levels Exceed Standards	Unknown
	2/4/00	2/7/00	3	0.09	Bacterial levels Exceed Standards	Unknown
	2/4/00	2/9/00	5	0.11	Bacterial levels Exceed Standards	Unknown
	2/5/00	2/9/00	4	0.11	Bacterial levels Exceed Standards	Unknown
	2/5/00	2/9/00	4	0.11	Bacterial levels Exceed Standards	Unknown
	3/1/00	3/31/00	30	1.70	Bacterial levels Exceed Standards	Unknown
	3/1/00	4/14/00	44	2.44	Bacterial levels Exceed Standards	Unknown
	3/1/00	3/28/00	27	1.53	Bacterial levels Exceed Standards	Unknown
	3/1/00	4/14/00	44	2.44	Bacterial levels Exceed Standards	Unknown
	3/3/00	3/31/00	28	1.59	Bacterial levels Exceed Standards	Unknown
	3/31/00	4/3/00	3	0.17	Bacterial levels Exceed Standards	Unknown

BeachName	Date Posted	Date Opened	Days Posted	Beach Mile Days	Cause	Source
Mission Bay	4/1/00	4/4/00	3	0.17	Bacterial levels Exceed Standards	Unknown
	4/7/00	4/9/00	2	0.11	Bacterial levels Exceed Standards	Unknown
	4/13/00	4/21/00	8	0.45	Bacterial levels Exceed Standards	Unknown
	4/21/00	4/27/00	6	0.34	Bacterial levels Exceed Standards	Unknown
	4/24/00	4/28/00	4	0.23	Bacterial levels Exceed Standards	Unknown
	4/27/00	4/29/00	2	0.11	Bacterial levels Exceed Standards	Unknown
	5/5/00	5/8/00	3	0.17	Bacterial levels Exceed Standards	Unknown
	5/5/00	5/8/00	3	0.17	Bacterial levels Exceed Standards	Unknown
	5/5/00	5/8/00	3	0.17	Bacterial levels Exceed Standards	Unknown
	5/5/00	5/8/00	3	0.17	Bacterial levels Exceed Standards	Unknown
	5/5/00	5/8/00	3	0.17	Bacterial levels Exceed Standards	Unknown
	5/5/00	5/7/00	2	0.11	Bacterial levels Exceed Standards	Unknown
	5/11/00	5/12/00	1	0.06	Bacterial levels Exceed Standards	Unknown

BeachName	Date Posted	Date Opened	Days Posted	Beach Mile Days	Cause	Source
Mission Bay	5/11/00	5/12/00	1	0.06	Bacterial levels Exceed Standards	Unknown
	5/11/00	5/12/00	1	0.06	Bacterial levels Exceed Standards	Unknown
	5/11/00	5/12/00	1	0.06	Bacterial levels Exceed Standards	Unknown
	5/12/00	5/13/00	1	0.06	Bacterial levels Exceed Standards	Unknown
	5/12/00	5/13/00	1	0.06	Bacterial levels Exceed Standards	Unknown
	5/12/00	5/13/00	1	0.06	Bacterial levels Exceed Standards	Unknown
	5/19/00	5/21/00	2	0.11	Bacterial levels Exceed Standards	Unknown
	5/19/00	5/25/00	6	0.34	Bacterial levels Exceed Standards	Unknown
	5/25/00	5/26/00	1	0.06	Bacterial levels Exceed Standards	Unknown
	6/2/00	6/4/00	2	0.11	Bacterial levels Exceed Standards	Unknown
	6/2/00	6/4/00	2	0.11	Bacterial levels Exceed Standards	Unknown
	6/14/00	6/18/00	4	0.23	Bacterial levels Exceed Standards	Unknown
	6/16/00	6/18/00	2	0.11	Bacterial levels Exceed Standards	Unknown

BeachName	Date Posted	Date Opened	Days Posted	Beach Mile Days	Cause	Source
Mission Bay	6/16/00	6/19/00	3	0.17	Bacterial levels Exceed Standards	Unknown
	6/27/00	6/29/00	2	0.11	Bacterial levels Exceed Standards	Unknown
	6/29/00	7/4/00	5	0.28	Bacterial levels Exceed Standards	Unknown
	6/30/00	7/3/00	3	0.17	Bacterial levels Exceed Standards	Unknown
	6/30/00	7/2/00	2	0.11	Bacterial levels Exceed Standards	Unknown
	6/30/00	7/1/00	1	0.06	Bacterial levels Exceed Standards	Unknown
	7/5/00	7/7/00	2	0.11	Bacterial levels Exceed Standards	Unknown
	7/5/00	7/7/00	2	0.11	Bacterial levels Exceed Standards	Unknown
	7/14/00	7/17/00	3	0.17	Bacterial levels Exceed Standards	Unknown
	7/18/00	7/20/00	2	0.11	Bacterial levels Exceed Standards	Unknown
	7/18/00	7/20/00	2	0.11	Bacterial levels Exceed Standards	Unknown
	7/18/00	7/21/00	3	0.17	Bacterial levels Exceed Standards	Unknown
	7/20/00	9/1/00	43	2.44	Bacterial levels Exceed Standards	Unknown

BeachName	Date Posted	Date Opened	Days Posted	Beach Mile Days	Cause	Source
Mission Bay	7/21/00	7/25/00	4	0.23	Other - unkown discharge via storm drain	Urban runoff-Dry
	7/25/00	7/30/00	5	0.28	Bacterial levels Exceed Standards	Unknown
	7/25/00	7/27/00	2	0.11	Bacterial levels Exceed Standards	Unknown
	7/25/00	7/27/00	2	0.11	Bacterial levels Exceed Standards	Unknown
	7/25/00	7/27/00	2	0.11	Bacterial levels Exceed Standards	Unknown
	7/27/00	7/29/00	2	0.11	Bacterial levels Exceed Standards	Unknown
	8/1/00	8/4/00	3	0.17	Bacterial levels Exceed Standards	Unknown
	8/1/00	8/3/00	2	0.11	Bacterial levels Exceed Standards	Unknown
	8/1/00	8/3/00	2	0.11	Bacterial levels Exceed Standards	Unknown
	8/4/00	8/6/00	2	0.11	Bacterial levels Exceed Standards	Unknown
	8/8/00	8/9/00	1	0.06	Bacterial levels Exceed Standards	Unknown
	8/8/00	8/9/00	1	0.06	Bacterial levels Exceed Standards	Unknown
	8/8/00	8/9/00	1	0.06	Bacterial levels Exceed Standards	Unknown

BeachName	Date Posted	Date Opened	Days Posted	Beach Mile Days	Cause	Source
Mission Bay	8/9/00	8/12/00	3	0.17	Bacterial levels Exceed Standards	Unknown
	8/9/00	10/19/00	71	3.18	Bacterial levels Exceed Standards	Unknown
	8/22/00	8/26/00	4	0.23	Bacterial levels Exceed Standards	Unknown
	8/22/00	10/26/00	65	3.64	Bacterial levels Exceed Standards	Unknown
	9/8/00	9/14/00	6	0.34	Bacterial levels Exceed Standards	Unknown
	9/8/00	9/10/00	2	0.11	Bacterial levels Exceed Standards	Unknown
	9/8/00	9/10/00	2	0.11	Bacterial levels Exceed Standards	Unknown
	9/21/00	10/12/00	21	1.14	Bacterial levels Exceed Standards	Unknown
	9/28/00	9/30/00	2	0.11	Bacterial levels Exceed Standards	Unknown
	9/28/00	9/30/00	2	0.11	Bacterial levels Exceed Standards	Unknown
	9/29/00	10/2/00	3	0.17	Bacterial levels Exceed Standards	Unknown
	9/29/00	10/2/00	3	0.17	Bacterial levels Exceed Standards	Unknown
	9/29/00	10/12/00	13	0.68	Bacterial levels Exceed Standards	Unknown

BeachName	Date Posted	Date Opened	Days Posted	Beach Mile Days	Cause	Source
Mission Bay	10/3/00	10/13/00	10	0.57	Bacterial levels Exceed Standards	Unknown
	10/3/00	10/18/00	15	0.85	Bacterial levels Exceed Standards	Unknown
	10/5/00	10/9/00	4	0.23	Bacterial levels Exceed Standards	Unknown
	10/10/00	10/12/00	2	0.11	Bacterial levels Exceed Standards	Unknown
	10/13/00	10/26/00	13	0.74	Bacterial levels Exceed Standards	Unknown
	10/13/00	10/14/00	1	0.06	Bacterial levels Exceed Standards	Unknown
	10/18/00	10/20/00	2	0.11	Bacterial levels Exceed Standards	Unknown
	10/18/00	10/24/00	6	0.34	Bacterial levels Exceed Standards	Unknown
	10/18/00	10/24/00	6	0.34	Bacterial levels Exceed Standards	Unknown
	10/20/00	10/22/00	2	0.11	Bacterial levels Exceed Standards	Unknown
	10/20/00	10/26/00	6	0.34	Bacterial levels Exceed Standards	Unknown
	10/20/00	10/22/00	2	0.11	Bacterial levels Exceed Standards	Unknown
	10/26/00	10/28/00	2	0.11	Bacterial levels Exceed Standards	Unknown

BeachName	Date Posted	Date Opened	Days Posted	Beach Mile Days	Cause	Source
Mission Bay	10/26/00	10/28/00	2	0.11	Bacterial levels Exceed Standards	Unknown
	10/26/00	10/28/00	2	0.11	Bacterial levels Exceed Standards	Unknown
	10/26/00	10/28/00	2	0.11	Bacterial levels Exceed Standards	Unknown
	10/31/00	11/3/00	3	0.17	Bacterial levels Exceed Standards	Urban runoff-Wet
	10/31/00	11/22/00	22	1.25	Bacterial levels Exceed Standards	Urban runoff-Wet
	10/31/00	11/3/00	3	0.17	Bacterial levels Exceed Standards	Urban runoff-Wet
	10/31/00	11/3/00	3	0.17	Bacterial levels Exceed Standards	Urban runoff-Wet
	10/31/00	11/22/00	22	1.25	Bacterial levels Exceed Standards	Urban runoff-Wet
	10/31/00	11/3/00	3	0.17	Bacterial levels Exceed Standards	Urban runoff-Wet
	10/31/00	11/3/00	3	0.17	Bacterial levels Exceed Standards	Urban runoff-Wet
	10/31/00	11/3/00	3	0.17	Bacterial levels Exceed Standards	Urban runoff-Wet
	11/2/00	11/6/00	4	0.23	Bacterial levels Exceed Standards	Unknown
	11/7/00	11/22/00	15	0.85	Bacterial levels Exceed Standards	Unknown

BeachName	Date Posted	Date Opened	Days Posted	Beach Mile Days	Cause	Source
Mission Bay	11/7/00	11/16/00	9	0.51	Bacterial levels Exceed Standards	Unknown
	11/7/00	11/16/00	9	0.51	Bacterial levels Exceed Standards	Unknown
	11/7/00	11/17/00	10	0.57	Bacterial levels Exceed Standards	Unknown
	11/15/00	11/16/00	1	0.06	Bacterial levels Exceed Standards	Unknown
	11/15/00	12/1/00	16	0.91	Bacterial levels Exceed Standards	Unknown
	11/15/00	11/16/00	1	0.06	Bacterial levels Exceed Standards	Unknown
	11/16/00	11/18/00	2	0.11	Bacterial levels Exceed Standards	Unknown
	11/16/00	11/22/00	6	0.34	Bacterial levels Exceed Standards	Unknown
	11/16/00	11/18/00	2	0.11	Bacterial levels Exceed Standards	Unknown
	11/22/00	12/31/00	39	2.22	Bacterial levels Exceed Standards	Unknown
	11/30/00	12/1/00	1	0.06	Bacterial levels Exceed Standards	Unknown
	12/5/00	12/7/00	2	0.11	Bacterial levels Exceed Standards	Unknown
	12/7/00	12/21/00	14	0.80	Bacterial levels Exceed Standards	Unknown

BeachName	Date Posted	Date Opened	Days Posted	Beach Mile Days	Cause	Source
Mission Bay	12/14/00	12/16/00	2	0.06	Bacterial levels Exceed Standards	Unknown
	12/14/00	12/16/00	2	0.11	Bacterial levels Exceed Standards	Unknown
	12/14/00	12/16/00	2	0.06	Bacterial levels Exceed Standards	Unknown
	12/20/00	12/21/00	1	0.17	Bacterial levels Exceed Standards	Unknown
	12/20/00	12/21/00	1	20.74	Bacterial levels Exceed Standards	Unknown
	12/20/00	12/21/00	1	0.11	Bacterial levels Exceed Standards	Unknown
	12/20/00	12/21/00	1	0.06	Bacterial levels Exceed Standards	Unknown
Ocean Beach	12/28/00	12/30/00	2		Bacterial levels Exceed Standards	Unknown
	1/4/00	1/5/00	1	0.03	Bacterial levels Exceed Standards	Unknown
	1/19/00	4/26/00	98	2.61	Bacterial levels Exceed Standards	Unknown
	1/20/00	1/24/00	4	0.11	Bacterial levels Exceed Standards	Unknown
	7/18/00	7/27/00	9	0.51	Bacterial levels Exceed Standards	Unknown
	8/3/00	8/4/00	1	0.08	Illegal Disposal of Chemical	Unknown

BeachName	Date Posted	Date Opened	Days Posted	Beach Mile Days	Cause	Source
Ocean Beach	8/3/00	8/8/00	5	0.28	Bacterial levels Exceed Standards	Unknown
	9/1/00	9/5/00	4	0.23	Bacterial levels Exceed Standards	Unknown
	9/18/00	9/19/00	1	0.06	Bacterial levels Exceed Standards	Unknown
	9/29/00	10/2/00	3	0.17	Bacterial levels Exceed Standards	Unknown
	10/3/00	10/6/00	3	0.17	Bacterial levels Exceed Standards	Unknown
Oceanside / Carlsbad border	10/11/00	10/13/00	2	0.11	Bacterial levels Exceed Standards	Unknown
	7/7/00	7/10/00	3	0.17	Bacterial levels Exceed Standards	Unknown
	8/30/00	9/1/00	2	0.11	Outlet Excavation / Buena Vista Lagoon	Unknown
Oceanside City Beach	11/2/00	11/3/00	1	0.06	Bacterial levels Exceed Standards	Urban runoff-Wet
	1/3/00	1/5/00	2	0.15	Lagoon Opening	Creeks/Rivers-Wet
	1/26/00	6/16/00	142	11.25	Bacterial levels Exceed Standards	Creeks/Rivers-Wet
	3/25/00	3/28/00	3	0.17	Bacterial levels Exceed Standards	Unknown
	5/18/00	5/19/00	1	0.06	Bacterial levels Exceed Standards	Unknown

BeachName	Date Posted	Date Opened	Days Posted	Beach Mile Days	Cause	Source
Oceanside City Beach	5/23/00	5/27/00	4	0.19	Bacterial levels Exceed Standards	Unknown
	6/8/00	6/10/00	2	0.11	Bacterial levels Exceed Standards	Unknown
	6/27/00	6/29/00	2	0.11	Bacterial levels Exceed Standards	Unknown
	8/16/00	8/18/00	2	0.11	Bacterial levels Exceed Standards	Unknown
	8/29/00	8/30/00	1	0.06	Bacterial levels Exceed Standards	Unknown
	8/30/00	9/1/00	2	0.08	Outlet Excavation / San Luis Rey River	Unknown
	8/30/00	8/31/00	1	0.06	Bacterial levels Exceed Standards	Unknown
	9/19/00	9/21/00	2	0.11	Bacterial levels Exceed Standards	Unknown
	9/27/00	10/3/00	6	0.28	Outlet Excavation / Loma Alta Creek	Urban runoff-Dry
	10/4/00	10/12/00	8	0.23	Outlet Excavation / San Luis Rey River	Unknown
	10/16/00	12/31/00	76	4.32	Bacterial levels Exceed Standards	Urban runoff-Dry
	10/23/00	10/27/00	4	0.11	Outlet Excavation / San Luis Rey River	Urban runoff-Dry
	11/1/00	11/3/00	2	0.11	Bacterial levels Exceed Standards	Urban runoff-Wet

BeachName	Date Posted	Date Opened	Days Posted	Beach Mile Days	Cause	Source
Oceanside City Beach	11/1/00	11/9/00	8	0.45	Bacterial levels Exceed Standards	Urban runoff-Wet
	11/1/00	11/3/00	2	0.11	Bacterial levels Exceed Standards	Urban runoff-Wet
	11/1/00	11/3/00	2	0.11	Bacterial levels Exceed Standards	Urban runoff-Wet
	11/1/00	11/3/00	2	0.11	Bacterial levels Exceed Standards	Urban runoff-Wet
	11/14/00	11/16/00	2	0.11	Bacterial levels Exceed Standards	Urban runoff-Wet
	11/28/00	11/30/00	2	0.06	Outlet Excavation / San Luis Rey River	Unknown
Pacific Beach	12/27/00	12/30/00	3		Outlet Excavation / San Luis Rey River	Urban runoff-Dry
	2/1/00	2/3/00	2	0.06	Bacterial levels Exceed Standards	Unknown
	3/21/00	3/23/00	2	0.11	Bacterial levels Exceed Standards	Unknown
	4/4/00	4/6/00	2	0.11	Bacterial levels Exceed Standards	Unknown
	8/16/00	8/17/00	1	0.06	Bacterial levels Exceed Standards	Unknown
	8/17/00	8/21/00	4	0.23	Bacterial levels Exceed Standards	Unknown
	10/18/00	10/20/00	2	0.11	Bacterial levels Exceed Standards	Unknown

BeachName	Date Posted	Date Opened	Days Posted	Beach Mile Days	Cause	Source
San Diego Bay	4/21/00	4/24/00	3	0.17	Bacterial levels Exceed Standards	Unknown
	4/25/00	4/27/00	2	0.11	Bacterial levels Exceed Standards	Unknown
	4/25/00	4/27/00	2	0.11	Bacterial levels Exceed Standards	Unknown
	5/4/00	5/15/00	11	0.63	Bacterial levels Exceed Standards	Unknown
	6/8/00	6/10/00	2	0.11	Bacterial levels Exceed Standards	Unknown
	7/5/00	7/6/00	1	0.06	Bacterial levels Exceed Standards	Unknown
	7/13/00	7/15/00	2	0.11	Bacterial levels Exceed Standards	Unknown
	7/27/00	8/4/00	8	0.40	Bacterial levels Exceed Standards	Unknown
	8/10/00	8/11/00	1	0.06	Bacterial levels Exceed Standards	Unknown
	8/17/00	8/21/00	4	0.23	Bacterial levels Exceed Standards	Unknown
	8/24/00	8/26/00	2	0.11	Bacterial levels Exceed Standards	Unknown
	8/25/00	8/26/00	1	0.06	Bacterial levels Exceed Standards	Unknown
	8/30/00	9/5/00	6	0.28	Bacterial levels Exceed Standards	Unknown

BeachName	Date Posted	Date Opened	Days Posted	Beach Mile Days	Cause	Source
San Diego Bay	9/11/00	9/13/00	2	1.97	Precautionary / Playas De Tijuana, south swell	Urban runoff-Dry
	9/13/00	9/18/00	5	0.28	Bacterial levels Exceed Standards	Unknown
	9/20/00	9/22/00	2	0.11	Bacterial levels Exceed Standards	Unknown
	9/22/00	9/27/00	5	0.28	Bacterial levels Exceed Standards	Unknown
	10/4/00	10/11/00	7	0.40	Bacterial levels Exceed Standards	Unknown
	10/6/00	10/12/00	6	0.34	Bacterial levels Exceed Standards	Unknown
	10/13/00	10/18/00	5	0.28	Bacterial levels Exceed Standards	Unknown
San Onofre State Beach	10/26/00	10/28/00	2	0.11	Bacterial levels Exceed Standards	Unknown
	5/10/00	5/11/00	1	0.06	Bacterial levels Exceed Standards	Unknown
Silver Strand State Beach	12/13/00	12/15/00	2	0.11	Bacterial levels Exceed Standards	Unknown
South Carlsbad State Beach	7/25/00	7/26/00	1	0.06	Bacterial levels Exceed Standards	Unknown
	11/1/00	11/6/00	5	0.28	Bacterial levels Exceed Standards	Urban runoff-Wet
	11/2/00	11/3/00	1	0.06	Bacterial levels Exceed Standards	Urban runoff-Wet

BeachName	Date Posted	Date Opened	Days Posted	Beach Mile Days	Cause	Source
Sunset Cliffs Park	7/24/00	7/25/00	1	0.06	Bacterial levels Exceed Standards	Unknown
Tijuana Slough Nat'l Wildlife Refuge Shoreline	6/22/00	6/29/00	7	0.40	Bacterial levels Exceed Standards	Unknown
Torrey Pines State Beach	1/4/00	1/7/00	3	0.09	Bacterial levels Exceed Standards	Unknown
	2/1/00	2/8/00	7	0.20	Bacterial levels Exceed Standards	Unknown
	3/7/00	3/10/00	3	0.17	Bacterial levels Exceed Standards	Unknown
	4/4/00	4/7/00	3	0.17	Bacterial levels Exceed Standards	Unknown
	4/25/00	4/28/00	3	0.17	Bacterial levels Exceed Standards	Unknown
	8/24/00	8/25/00	1	0.06	Bacterial levels Exceed Standards	Unknown
	11/2/00	11/3/00	1	0.08	Bacterial levels Exceed Standards	Urban runoff-Wet
Tourmaline Surf Park	2/3/00	2/4/00	1	0.03	Bacterial levels Exceed Standards	Unknown
	3/3/00	3/10/00	7	0.40	Bacterial levels Exceed Standards	Unknown
	3/7/00	3/9/00	2	0.11	Bacterial levels Exceed Standards	Unknown
	4/13/00	4/14/00	1	0.06	Bacterial levels Exceed Standards	Unknown

BeachName	Date Posted	Date Opened	Days Posted	Beach Mile Days	Cause	Source
Tourmaline Surf Park	5/25/00	5/28/00	3	0.17	Bacterial levels Exceed Standards	Unknown
	6/15/00	12/31/00	199	11.25	Bacterial levels Exceed Standards	Unknown

Number of Postings: 274
 Sum of Days: 2450
 Sum of Beach Mile Days: 168.9

SWRCB for San Diego County DEH - Rain Advisories for 2000

BeachName	Date Closed	Date Opened	Days Closed	Cause	Source
San Diego County Coastlin	1/25/00	1/28/00	3	Urban Runoff due to rainf	Urban runoff-Wet
	2/11/00	2/29/00	18	Urban Runoff due to rainf	Urban runoff-Wet
	3/5/00	3/9/00	4	Urban Runoff due to rainf	Urban runoff-Wet
	4/18/00	4/23/00	5	Urban Runoff due to rainf	Urban runoff-Wet
	10/27/00	11/1/00	5	Urban Runoff due to rainf	Urban runoff-Wet
	11/11/00	11/14/00	3	Urban Runoff due to rainf	Urban runoff-Wet

Number of Advisories: 6

Number of Advisory Days: 38

STATE WATER RESOURCES CONTROL BOARD

P.O. BOX 100, Sacramento, CA 95812-0100

www.swrcb.ca.gov

Office of Legislative and Public Affairs: (916) 341-5250
Water Quality Information: (916) 341-5455

Clean Water Programs Information: (916) 341-5700
Water Rights Information: (916) 341-5300

CALIFORNIA REGIONAL WATER QUALITY CONTROL BOARDS

NORTH COAST REGION (1)

5550 Skylane Blvd., Ste. A
Santa Rosa, CA 95403
(707) 576-2220

SAN FRANCISCO BAY REGION (2)

1515 Clay Street, Ste. 1400
Oakland, CA 94612
(510) 622-2300

CENTRAL COAST REGION (3)

81 Higuera Street, Ste. 200
San Luis Obispo, CA 93401-5427
(805) 549-3147

LOS ANGELES REGION (4)

320 W. 4th Street, Ste. 200
Los Angeles, CA 90013
(213) 576-6600

LAHONTAN REGION (6)

2501 Lake Tahoe Blvd.
South Lake Tahoe, CA 96150
(530) 542-5400

VICTORVILLE BRANCH OFFICE

15428 Civic Drive, Ste. 100
Victorville, CA 92392-2383
(760) 241-6583

CENTRAL VALLEY REGION (5)

3443 Routier Road, Suite A
Sacramento, CA 95827-3098
(916) 255-3000

FRESNO BRANCH OFFICE

3614 East Ashlan Avenue
Fresno, CA 93726
(559) 445-5116

REDDING BRANCH OFFICE

415 Knollcrest Drive, Suite 100
Redding, CA 96002
(530) 224-4845

COLORADO RIVER BASIN REGION (7)

73-720 Fred Waring Dr., Ste. 100
Palm Desert, CA 92260
(760) 346-7491

SANTA ANA REGION (8)

California Tower
3737 Main Street, Ste. 500
Riverside, CA 92501-3339
(909) 782-4130

SAN DIEGO REGION (9)

9771 Clairemont Mesa Blvd., Ste. A
San Diego, CA 92124
(619) 467-2952



STATE OF CALIFORNIA
Gray Davis, Governor

CALIFORNIA ENVIRONMENTAL
PROTECTION AGENCY
Winston H. Hickox, Secretary

STATE WATER RESOURCES
CONTROL BOARD
Arthur G. Baggett, Jr., Chair