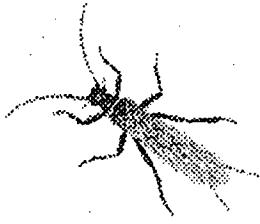
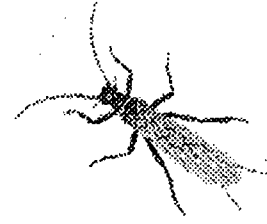


# Marin County Stormwater Pollution Prevention Program's



## Aquatic Macroinvertebrate Sampling Program



[Home](#) [Background](#) [Volunteers](#) [Protocols](#) [Sampling Site Maps](#) [Reports & Data](#) [Links](#) [Contact Us](#)

---

### Sampling Site Locations

Below is a list of the sites where macroinvertebrate samples were collected. Sample site designations, (Site ACM1, etc.) correspond to labels on map details. To view site location, click on the sample site name and a map of the locality will be displayed.

#### **Arroyo Corte Madera del Presidio Watershed- Mill Valley, California (6 square miles)**

Site ACM1: 20 meters downstream of La Goma bridge (downstream of Mill Valley City Center).

Site ACM3: Arroyo Corte Madera del Presidio at West. Blithedale Canyon Rd., upstream of Marsh Road ¼ mile.

Site ACM4: Old Mill Creek upstream of Old Mill Park (just upstream of private bridge on Cascade Dr.).

Site ACM5: Old Mill Creek, below Three Wells Park.

#### **Corte Madera Creek Watershed- Ross, San Anselmo and Fairfax (28 square miles)**

Site CMC1 Just upstream of Lagunitas Road bridge in Ross

Site CMC2 Creek Park in downtown San Anselmo; just downstream of culvert

Site CMC 3B 30 meters upstream of road culvert (above Phoenix Lake) on Bill Williams Creek on Marin Municipal Water District land near Ross

Site CMC4: San Anselmo Creek, near intersection of the 4th and main corridor of Drake High School in San Anselmo

Site CMC5: Sleepy Hollow creek tributary, downstream of Sir Frances Drake Blvd bridge at Drake High School in San Anselmo (near parking lot entrance)

Site CMC 6: Sleepy Hollow Creek at Lower Brookside School- at foot bridge in San Anselmo

Site CMC7: Sleepy Hollow at San Dominico School (end of Butterfield Road) above and below horse stables in San Anselmo

Site CMC8: Fairfax Creek just above fish ladder at end of Pastori Ave in Fairfax

Site CMC9: Cascade Creek at 39 Cascade Dr. in Fairfax

Site CMC 10: Cascade Creek at Elliott Preserve just above foot bridge (below Cascade falls) in Fairfax

### **Miller Creek-Lucas Valley Watershed- San Rafael (12.5 sq. miles)**

Site MC1: 100 meters upstream of highway 101

Site MC2: Miller Creek Middle School- (20 meters upstream from Las Gallinas Road)

Site MC3: Approximately 100m u/s from Lucas Valley Rd. Crossing @ Canyon Oak Rd.

SiteMC4: Dixie Elementary School~30m downstream of Mt. Shasta bridge

Site MC5: Approximately 50m downstream of Westgate Rd. bridge

### **Novato Creek watershed- Novato (44 sq. miles)**

Site NC1: Lee Gerner Park 10 meters upstream of Tamalpais Road

Site NC2: 30 meters upstream of Simmons Av. in Pioneer Park

Site NC3: 30 meters upstream of Miwok Park, off of Novato Blvd.

Site NC4: 30 meters upstream of Sutro Ave. at O'Hair Park

Site NC5: Downstream of Stafford Lake dam; downstream of confluence with Bowman Canyon

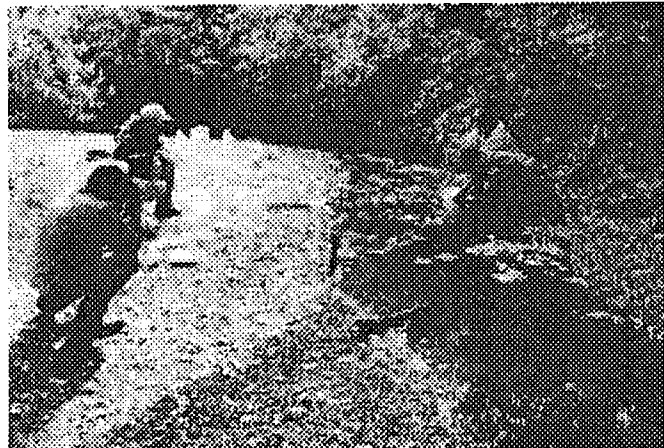
Site NC6: 30 meters upstream of Stafford Lake on Novato Creek

Site NC7: 30 meters upstream of Mill Road on Vineyard Creek

Site NC8: 30 meters downstream of McClay Road on Warner Creek

Site NC9: Arroyo San Jose, at the end of Digital Drive in business park

Site NC10: Arroyo San Jose, upstream of Ignacio Blvd



**Novato Creek at Miwok Park**

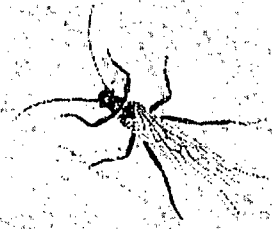
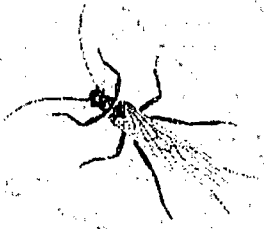
and below confluence of Ignacio Creek

*[top of page](#)*



[Home](#) [Background](#) [Volunteers](#) [Protocols](#) [Sampling Site Maps](#) [Reports & Data](#) [Links](#) [Contact Us](#)

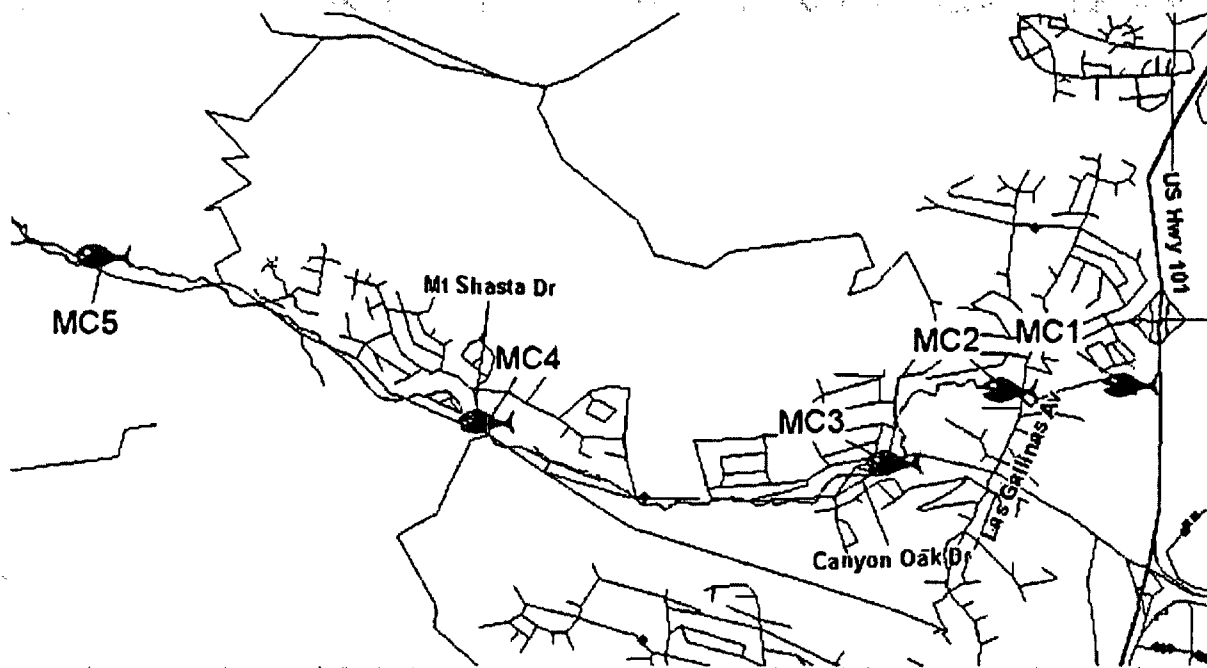
# Marin County Stormwater Pollution Prevention Program's Aquatic Macroinvertebrate Sampling Program



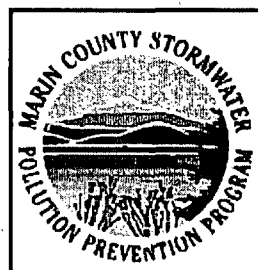
[Home](#) [Background](#) [Volunteers](#) [Protocols](#) [Sampling Site Maps](#) [Reports & Data](#) [Links](#) [Contact Us](#)

## Miller Creek Sampling Sites

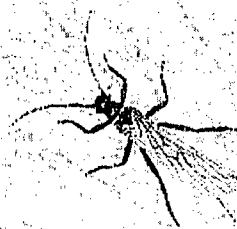
To view a list of all of the Marin sampling sites, visit our [sampling sites page](#).



[Back to County-wide map](#)



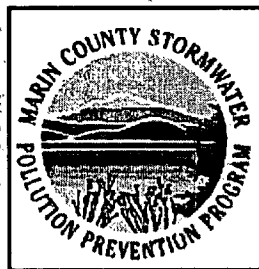
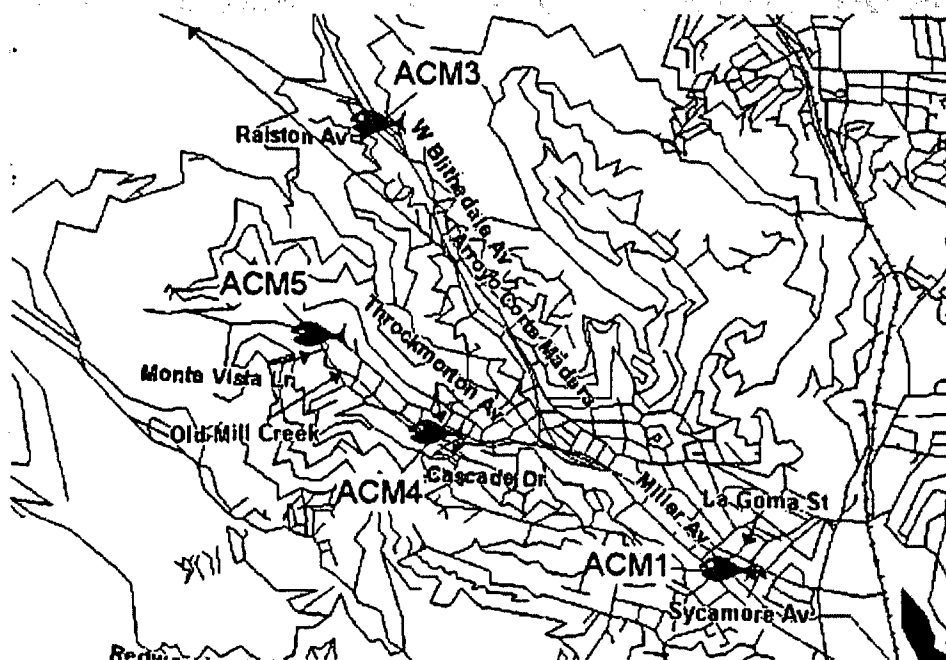
# Marin County Stormwater Pollution Prevention Program's Aquatic Macroinvertebrate Sampling Program



[Home](#) [Background](#) [Volunteers](#) [Protocols](#) [Sampling Site Maps](#) [Reports & Data](#) [Links](#) [Contact Us](#)

---

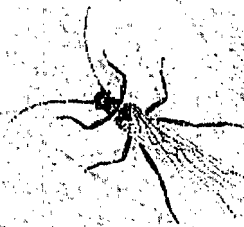
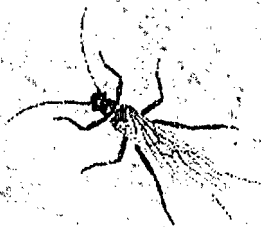
## Arroyo Corte Madera del Presidio Sampling Sites



[Home](#) [Background](#) [Volunteers](#) [Protocols](#) [Sampling Site Maps](#) [Reports & Data](#) [Links](#) [Contact Us](#)

# Marin County Stormwater Pollution Prevention Program's

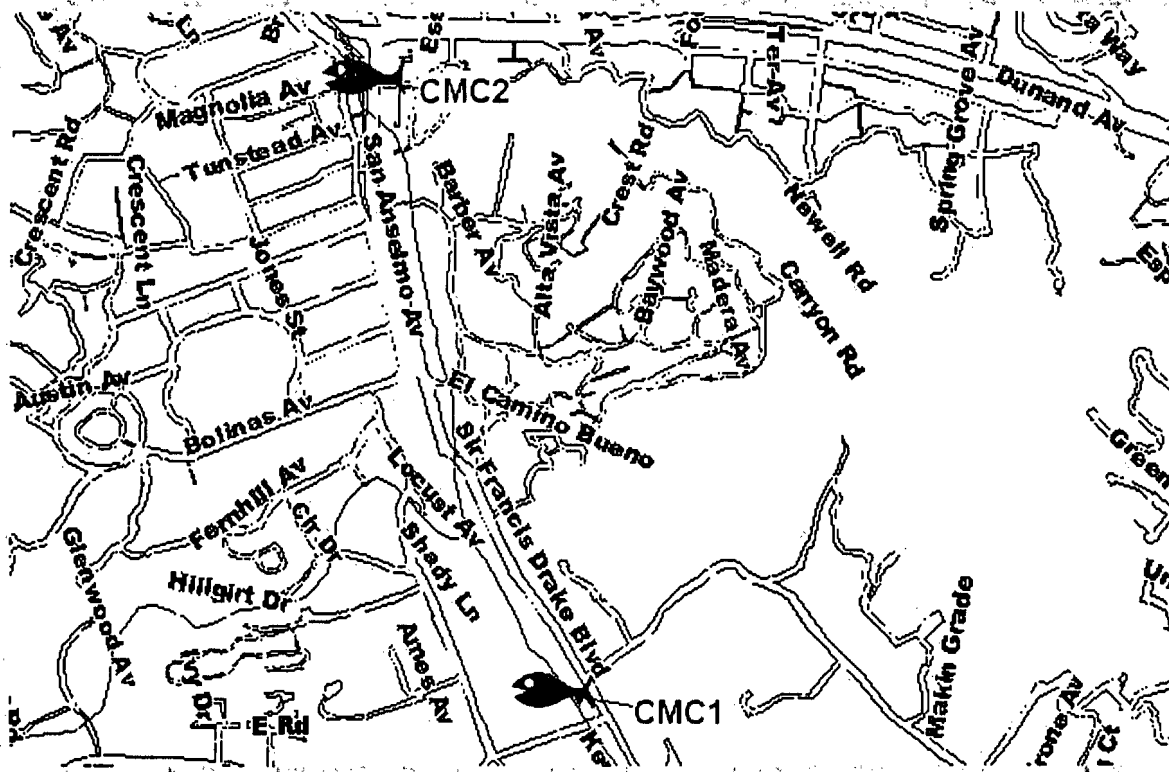
## Aquatic Macroinvertebrate Sampling Program



[Home](#) [Background](#) [Volunteers](#) [Protocols](#) [Sampling Site Maps](#) [Reports & Data](#) [Links](#) [Contact Us](#)

### Central Corte Madera Creek (and tributaries) Sampling Sites #1 and #2

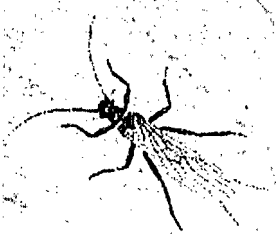
To view a list of all of the Marin sampling sites, visit our [sampling sites page](#).



[Back to County-wide Map](#)

# Marin County Stormwater Pollution Prevention Program's

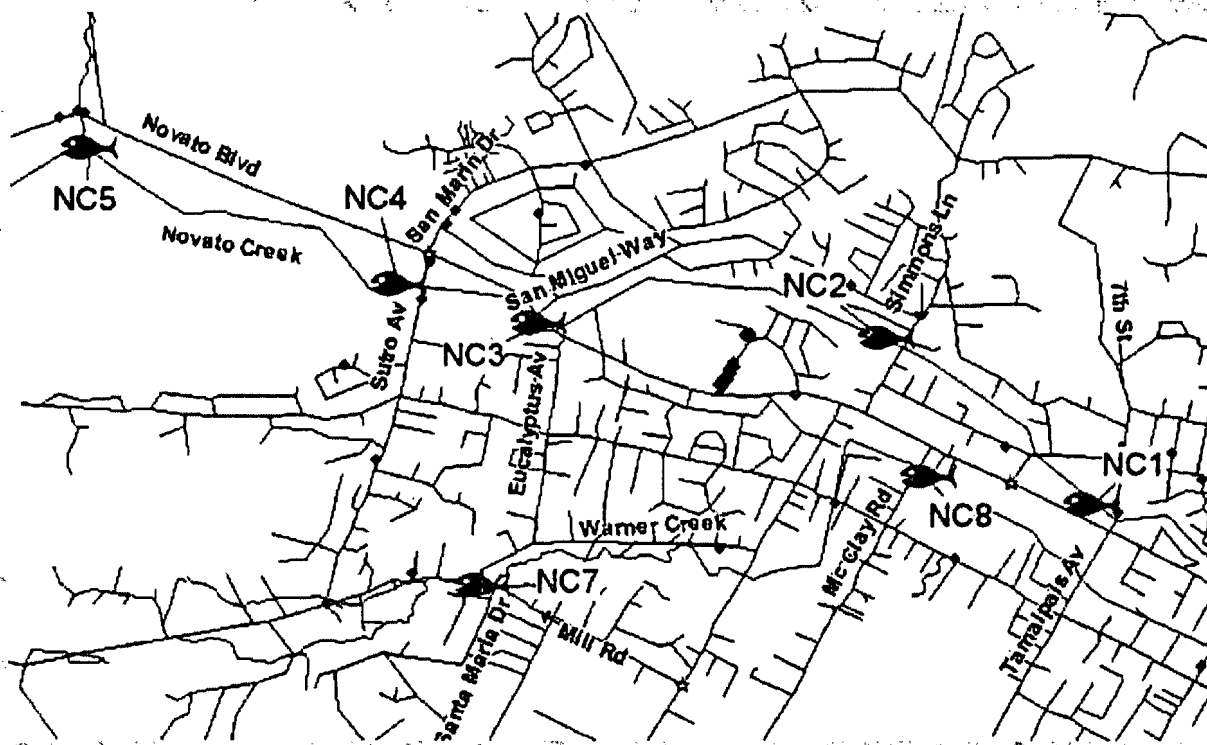
## Aquatic Macroinvertebrate Sampling Program



[Home](#) [Background](#) [Volunteers](#) [Protocols](#) [Sampling Site Maps](#) [Reports & Data](#) [Links](#) [Contact Us](#)

### Northern Novato Sampling Sites

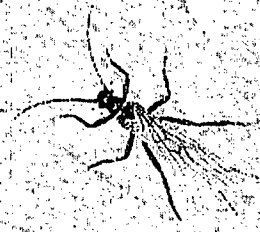
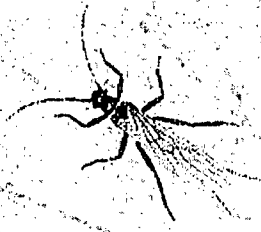
To view a list of all of the Marin sampling sites, visit our [sampling sites page](#).



[Back to County-wide Map](#)

# Marin County Stormwater Pollution Prevention Program's

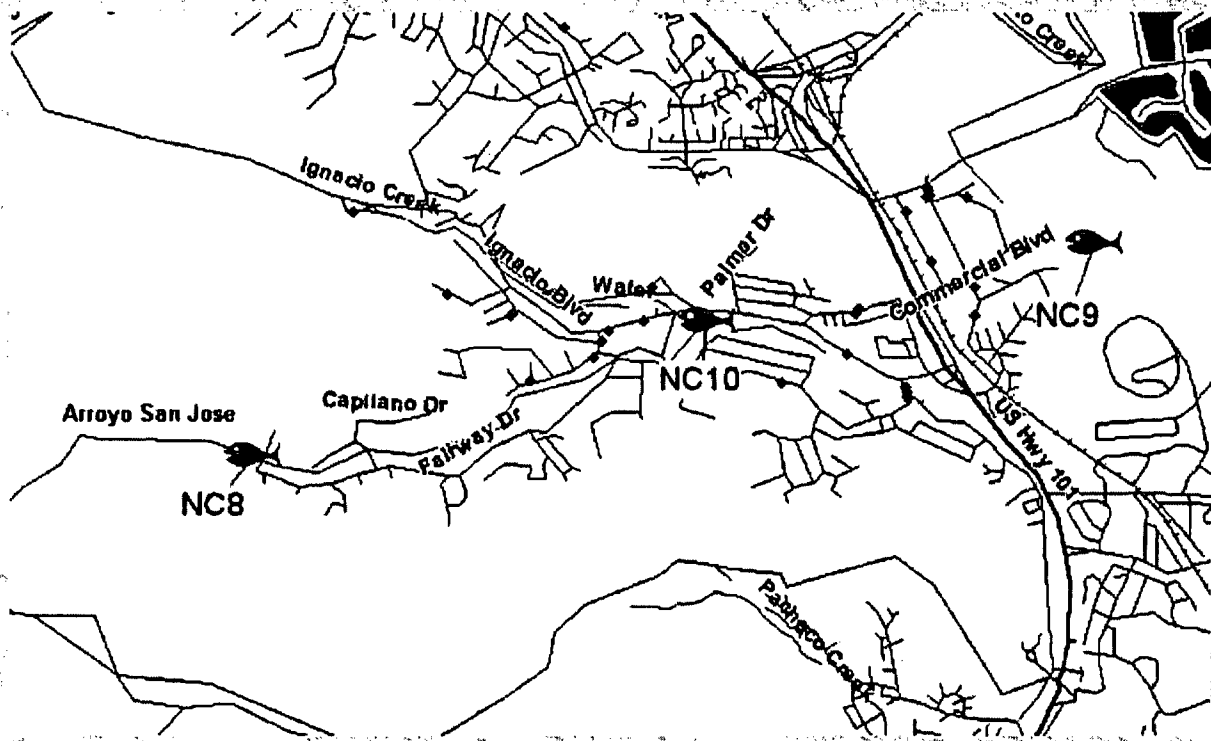
## Aquatic Macroinvertebrate Sampling Program



[Home](#) [Background](#) [Volunteers](#) [Protocols](#) [Sampling Site Maps](#) [Reports & Data](#) [Links](#) [Contact Us](#)

### Southern Novato Sampling Sites

To view a list of all of the Marin sampling sites, visit our [sampling sites page](#).



[Back to County-wide map](#)



SAN PABLO BAY

### Creeks and Lakes

- 01 Bowman Canyon Creek
- 02 Simon's Slough
- 03 Foster Creek
- 04 Stafford Lake
- 05 Novato Creek
- 06 Vineyard Creek
- 07 Wilson Creek
- 08 Arroyo Avichi Creek
- 09 Arroyo San Jose Creek
- 10 Phoenix Creek
- 11 Gallinas Creek
- 12 Bel Marin Keys
- 13 Sleepy Hollow Creek
- 14 Fairfax Creek
- 15 Ross Creek
- 16 San Anselmo Creek
- 17 Cascade Creek
- 18 Caray Camp Creek
- 19 Old Mill Creek
- 20 Cascade Creek
- 21 West Ditch
- 22 Coyote Creek
- 23 Oakwood Valley Creek
- 24 Reed Creek
- 25 Larkspur Cr
- 26 Tamalpais Ck
- 27 Deer Park Ck
- 28 Warner Ck
- 29 Marsh Ck
- 30 San Clemente Ck
- 31 Arroyo Corte Madera del Presidio
- 32 Glen Ck
- 33 Miller Ck
- 34 Pacheco Ck
- 35 Phoenix Lake
- 36 Warner Ck
- 37 Ignacio Ck
- 38 Pacheco Pond
- 39 Sutton Manor Ck
- 40 S Fork Gallinas Ck

Bay/Ocean Drainage Divide separating East and West Marin

Big Rock Ridge

Lucas Valley Road

Big Rock

Sir Francis Drake Blvd.

Loma Alta

Toma Linda

Miller Creek

Gallinas Creek

Santa Venetia

San Rafael

San Rafael Creek

China Camp

M. Tamalpais

Larkspur

Corte Madera

Corte Madera Creek

Mill Valley

Richardson Bay

Arroyo Corte Madera del Presidio

Tiburon

Belvedere

PACIFIC OCEAN

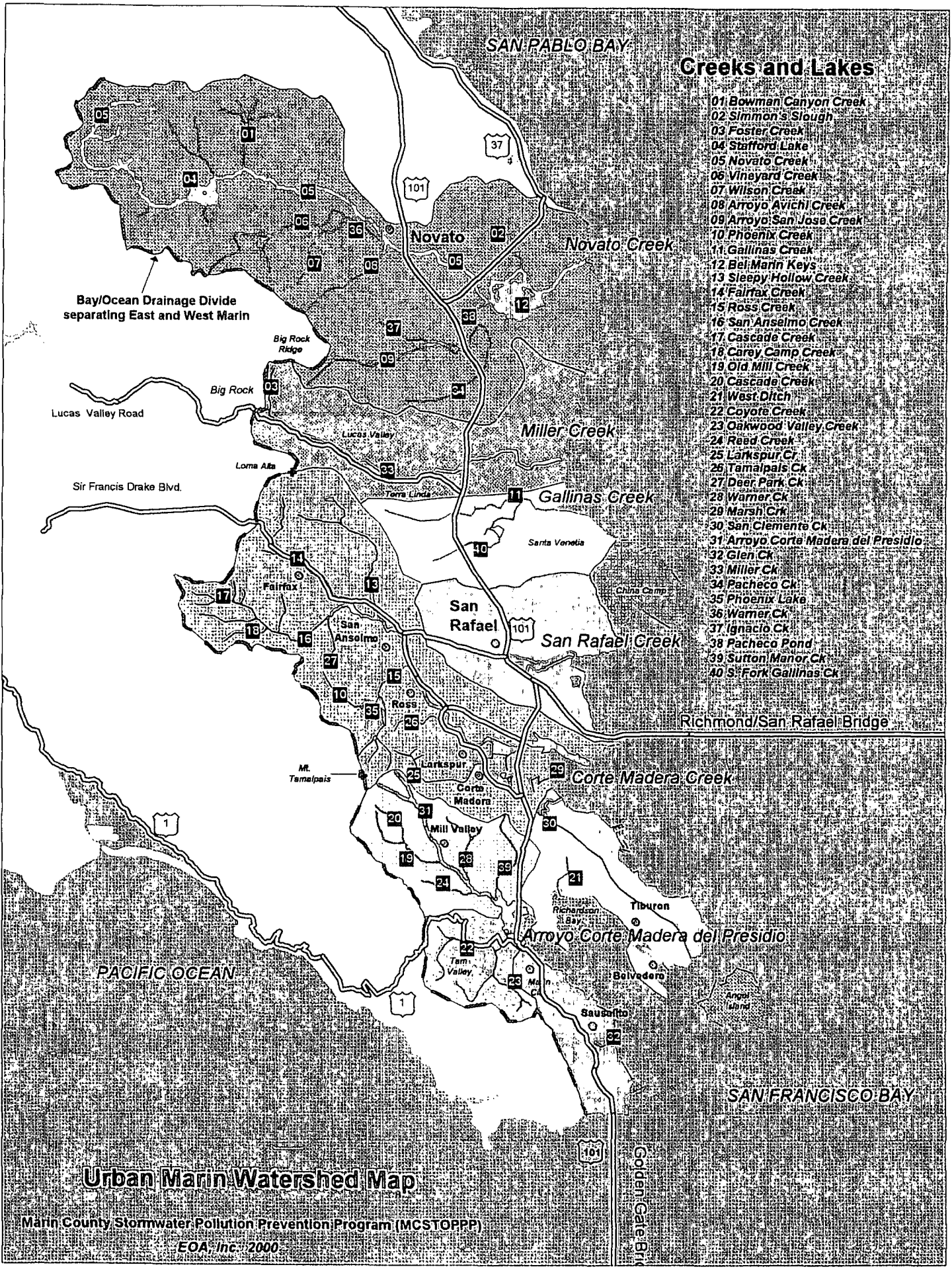
SAN FRANCISCO BAY

## Urban Marin Watershed Map

Marin County Stormwater Pollution Prevention Program (MCSTOPPP)

EOA, Inc. 2000

Golden Gate Blvd



*Where in the watershed are you?*

A watershed is the land that water flows over, or under, on its way to a creek or bay. Water travels down hills, across farm fields, suburban lawns and city streets to the lowest point (usually a creek) – or it seeps into the soil and travels as groundwater.

A watershed can be large: for example, the watershed of the San Francisco Bay and Delta. Or it can be small: for example, the watershed of a small creek in your neighborhood. This map illustrates how your house, backyard, school, and workplace are part of a watershed, connected by gutters, ditches, and storm drain pipes to Marin's creeks and to the Bay.

In eastern Marin County, wastewater from homes and businesses flows through a separate system of pipes and pump stations to wastewater treatment plants. But rainwater, along with pollutants washed off from streets and parking lots, flows directly to creeks and the Bay. Please note: wastewater treatment plants are not designed to manage hazardous wastes. Pesticides and motor oil, for example, can pass right through the treatment plant and enter the Bay. Never pour hazardous materials or residues down an indoor or outdoor drain. For safe management of household hazardous waste, Marin residents should call 485-6806. Novato residents should call 892-7344. You can also call the National Hotline for the Environment: 1-800-CLEAN-UP!

Eastern Marin (which includes all 11 of the county's incorporated cities and towns) drains to San Francisco Bay and San Pablo Bay. Creeks in West Marin, on the other side of the *Bay/Ocean Drainage Divide*, drain to the Pacific Ocean. Can you think of some familiar places where you cross the *Bay/Ocean Drainage Divide*? (Answers: White's Hill as you travel west to Woodacre; or, Big Rock as you travel from Lucas Valley to Nicasio toward Pt. Reyes Station.)

Most of urbanized, eastern Marin drains to one of six major creeks. As you drive northward on *Highway 101*, from the *Golden Gate Bridge*, you will cross *Arroyo Corte Madera del Presidio*, *Corte Madera Creek*, *San Rafael Creek*, *Gallinas Creek*, *Miller Creek*, and *Novato Creek*. Each of these creeks has its own drainage basin, or watershed. For example, *Fairfax*, *San Anselmo*, *Ross*, *Corte Madera*, and *Larkspur* are all in the watershed of *Corte Madera Creek*. Urban Marin's watersheds are shown as colored areas on the map. Can you think of places along Highway 101 (going North) where you cross the boundaries of urban Marin watersheds? (Sample Answers: As you drive pass Horse Hill, you leave the Arroyo Corte Madera del Presidio watershed in Mill Valley and enter the Corte Madera Creek Watershed; as you head toward the Francisco Blvd. exit, you leave the Corte Madera Creek watershed and enter the San Rafael Creek watershed. As you "climb" toward Alameda del Prado/Hamilton exit, you cross the Miller Creek Watershed and enter Novato Creek watershed.) Many smaller creeks are also numbered on the map, and their names are shown in the legend. Can you find the creek nearest you?

In some watersheds, small creeks drain into the major creeks that flow year-round. Some hilly coastal areas, like *Sausalito*, *Tiburon*, *Belvedere*, and *China Camp*, don't have major, year-round creeks. In these areas, rainwater generally flows directly into wetlands and the Bay.

*Produced by the Marin County Stormwater Pollution Prevention Program. For more information on protecting the health of local creeks, call 499-6528.*