

*FRIENDS OF
NOVATO CREEK
PHOTO JOURNAL*



Wetland ponds
Pumped into Navajo
Creek
2/14/01

Photo #1

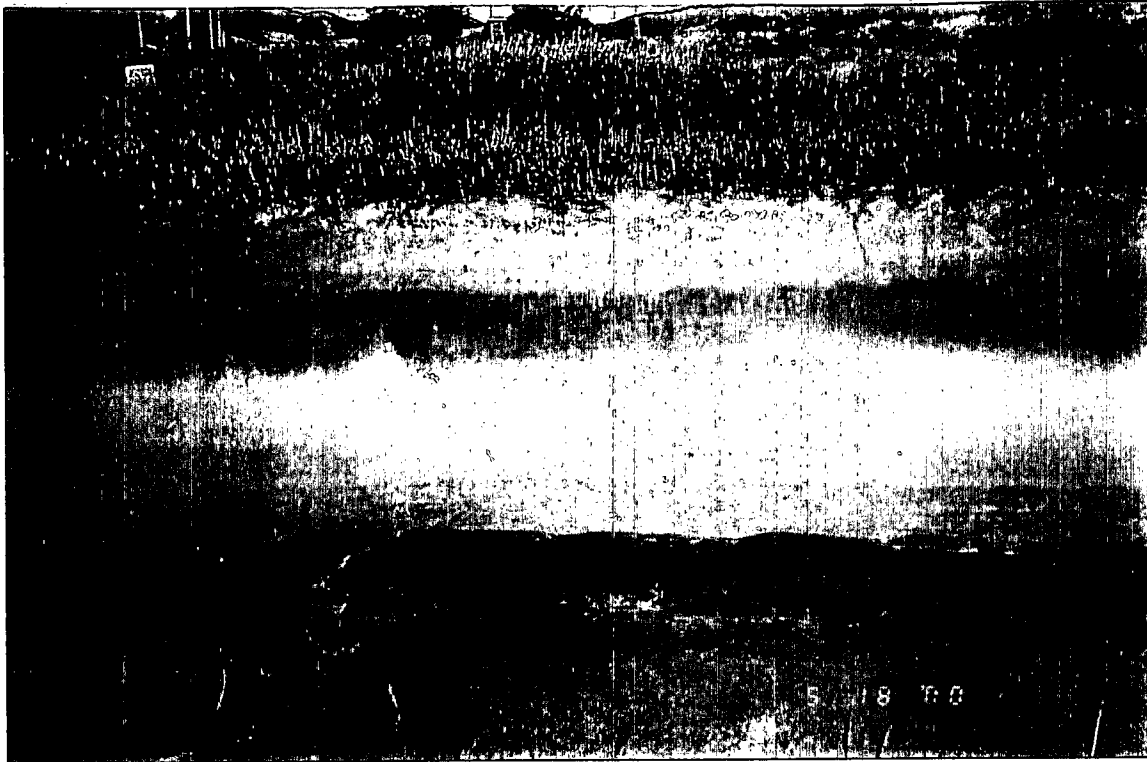
(#1)



Other side of levee
Ditch created by pumping
into Navajo Creek.
Navajo Sanitary.

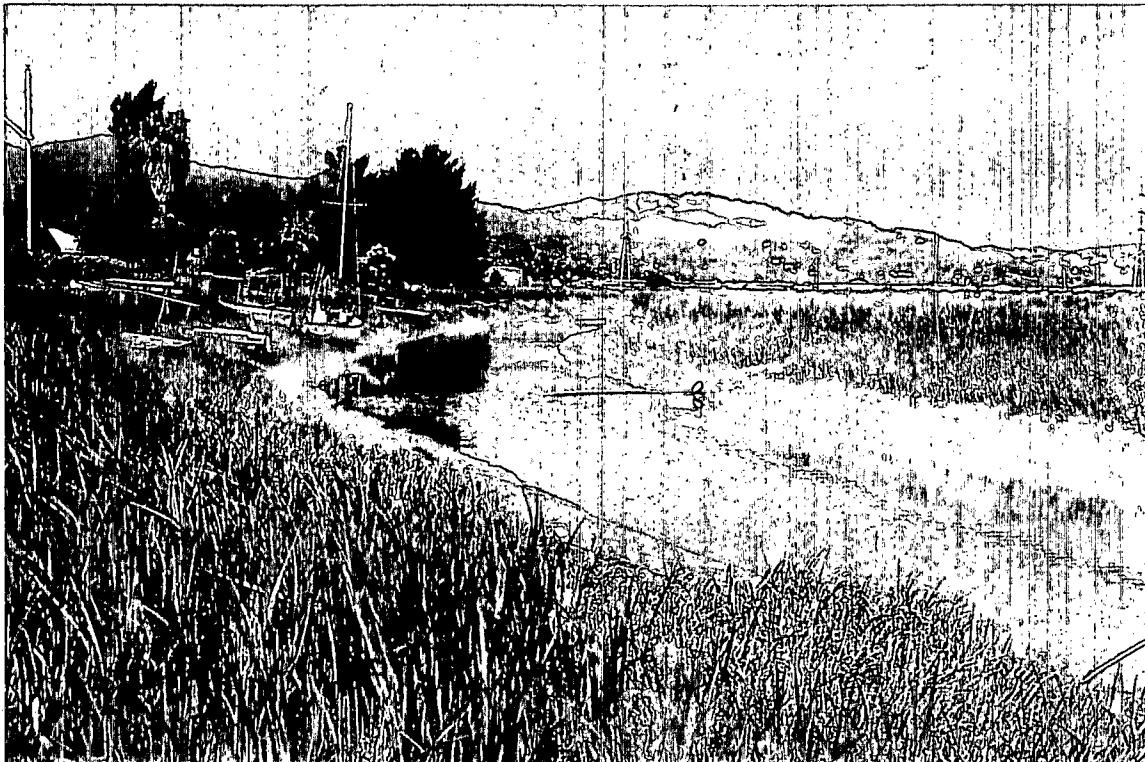
Photo #2

(#2)



#3

Photo #3



#4

Photo #4

BLACK SMELLY DISCHARGE INTO NOVATO
CREEK FROM NOVATO SANITARY DIST.
PUMP HOUSE ACROSS CREEK FROM
177 MONTEGO KEY ON 5-18-2000,
NOTE PUMP HOUSE BEHIND TREE IN
TO CENTER OF PICTURE.

BLACK SMELLY DISCHARGE INTO NOVATO
CREEK FROM NOVATO SANITARY DIST.
PUMP HOUSE ACROSS CREEK FROM
177 MONTEGO KEY ON 5-18-2000.

436
Lower
Novato Creek
Photo #5-



#5

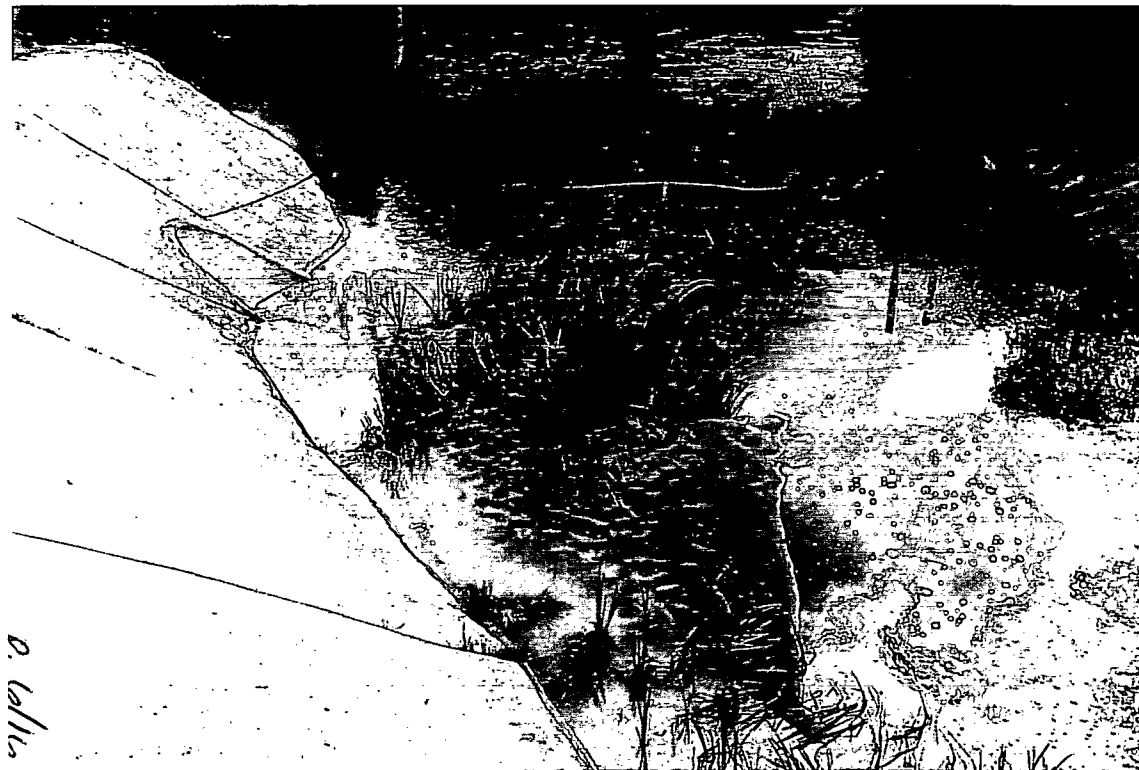
Photo #5



Milky discharge 3/1/01
Storm Drain #3
(no rainfall)

Photo #6

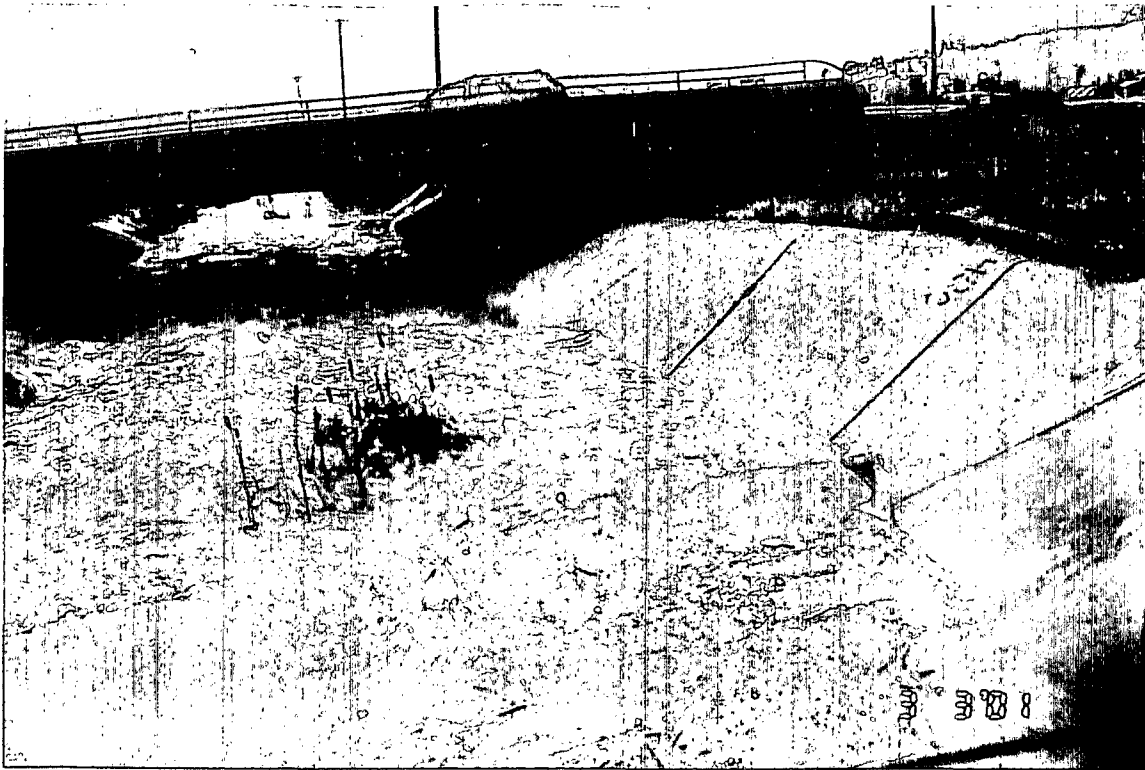
#6



3/1/01
Discharge - Storm Drain #2

Photo #7

#7



3/3/01
Storm Drain #2
(#8)

Photo #8



2/21/01
Storm Drain #2

Photo #9

(#9)



2/21/01
Racheco
Creek

Photo #10

(#10)



Photo #11

(#11)

Runoff from Shea Homes Development into Korteeco Creek.



Photo #12

#12

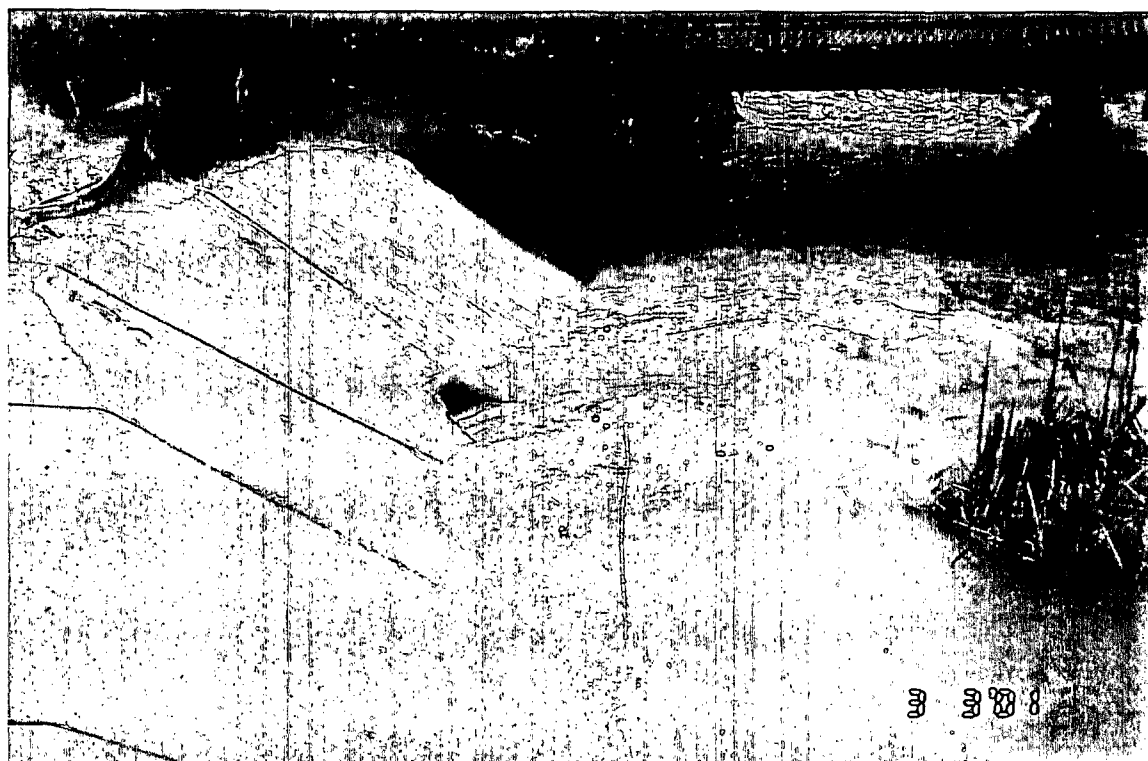
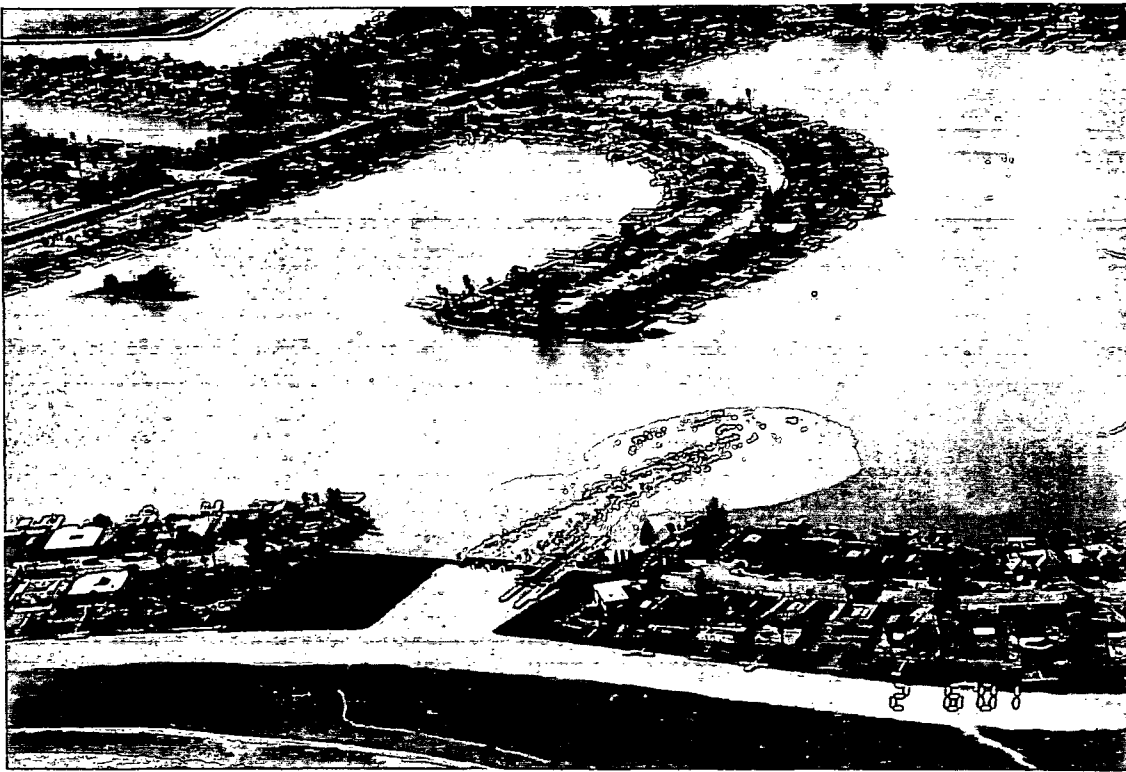


Photo #13

#13



#11

Pollution of BMK Lagoons
Via Flushing

Photo #14 2/6/01



Photo #15

#15

2.10/16

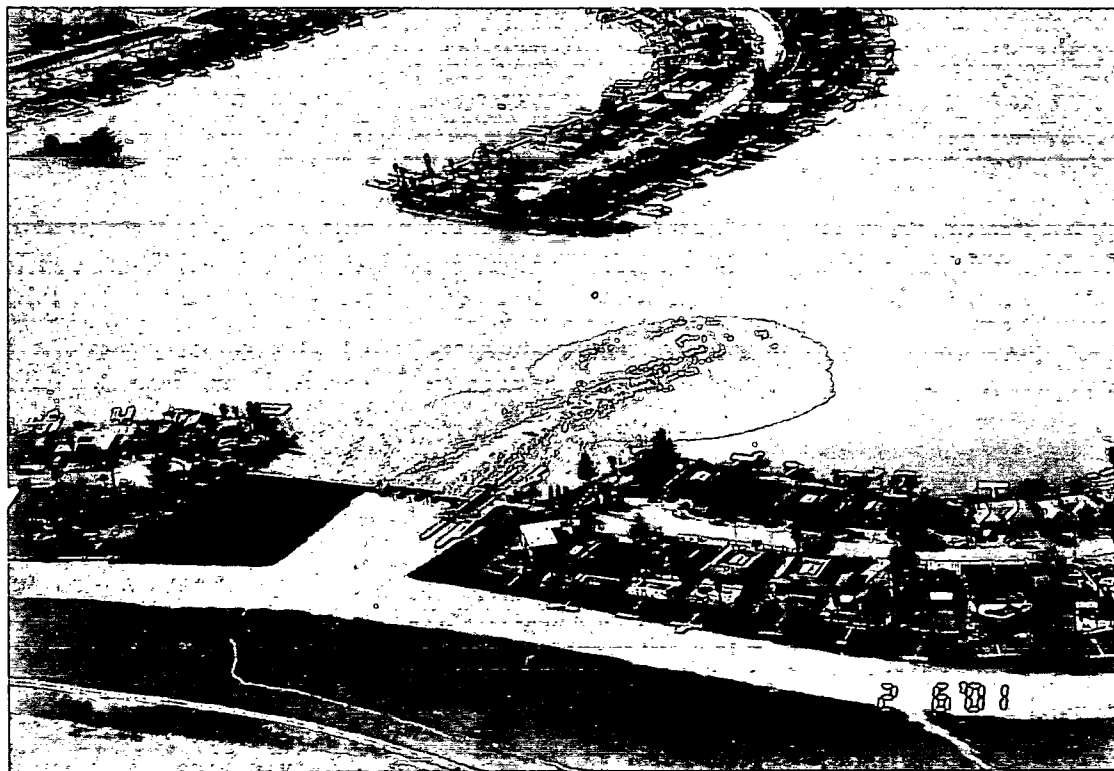


photo #16

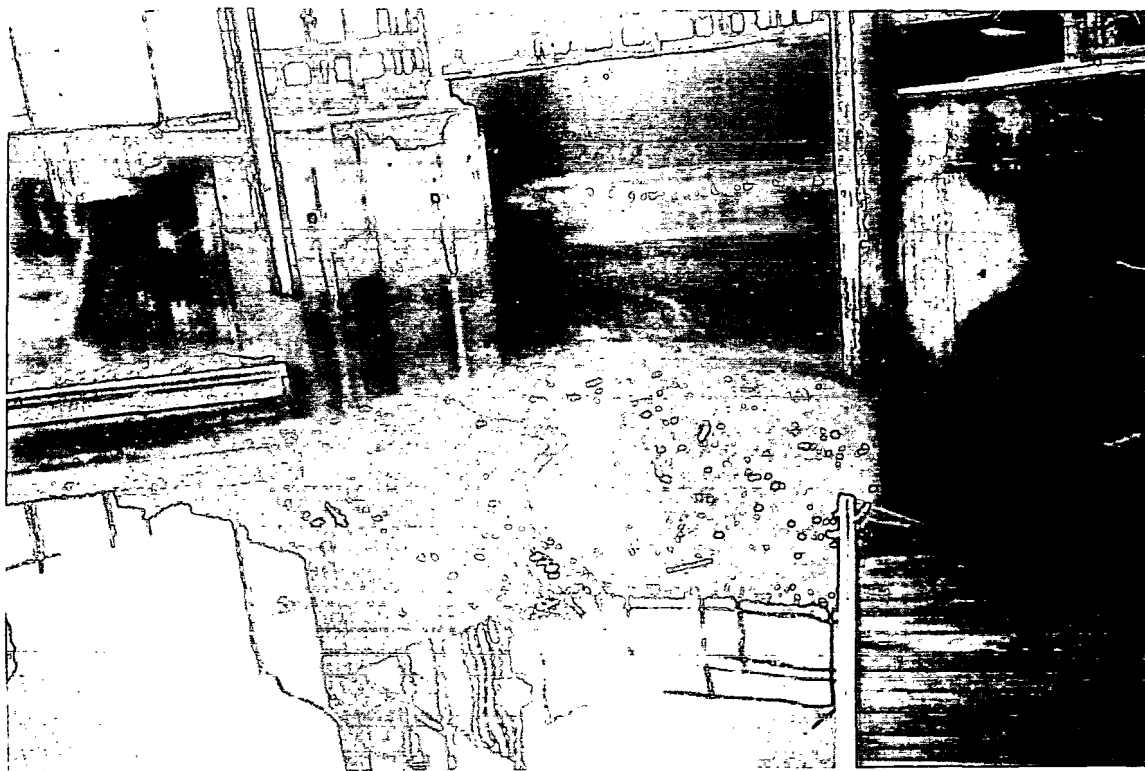
917



photo #17

917

P. 11/16



Water flushed into lagoons

Photo #18

#18



Photo #19

#19

P.12/116

#20

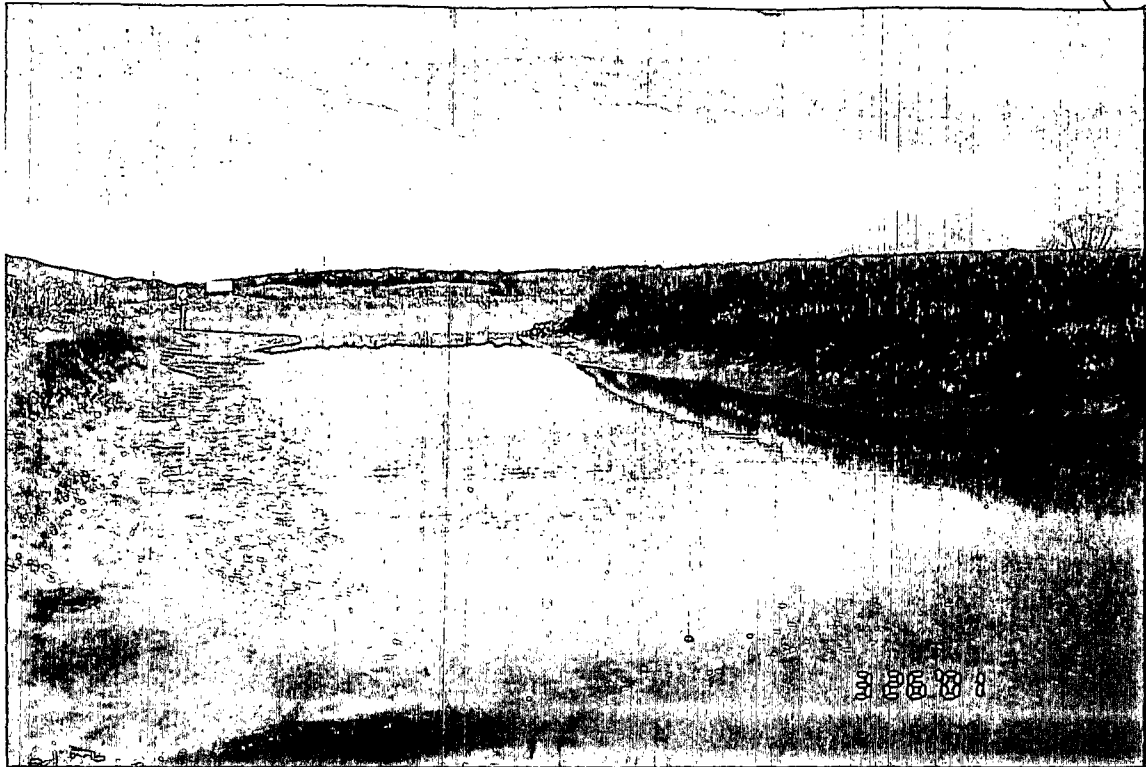


Photo #20

#21

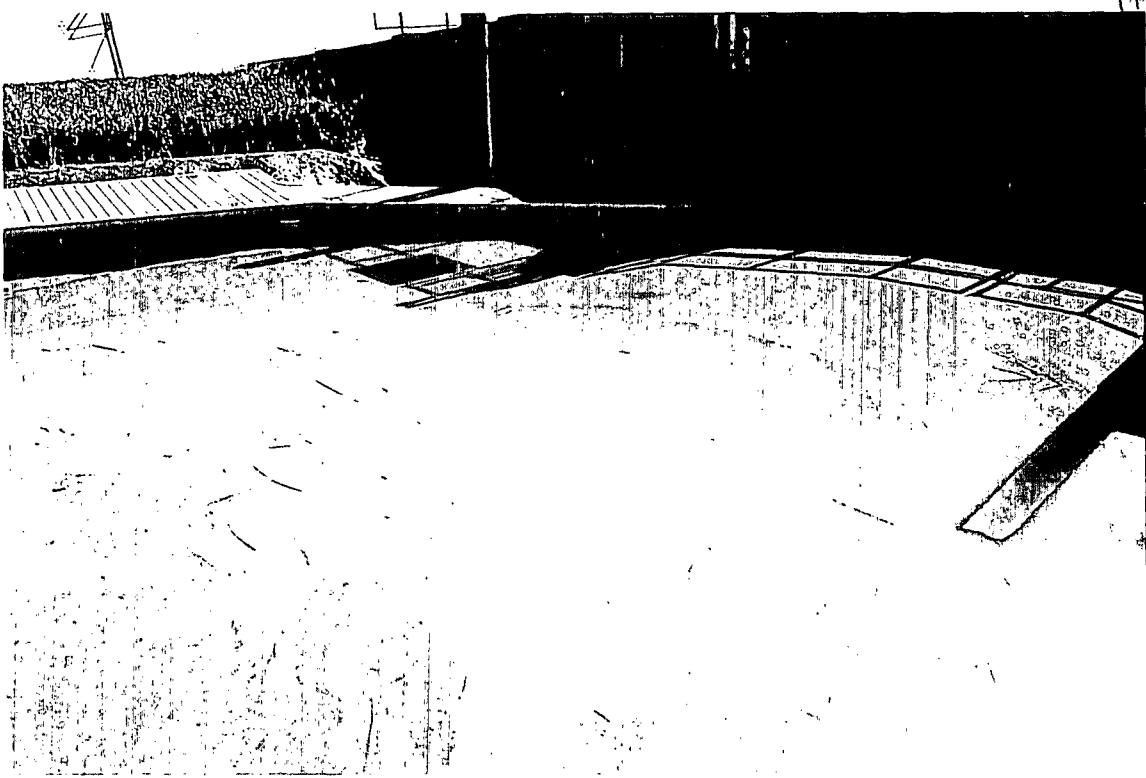
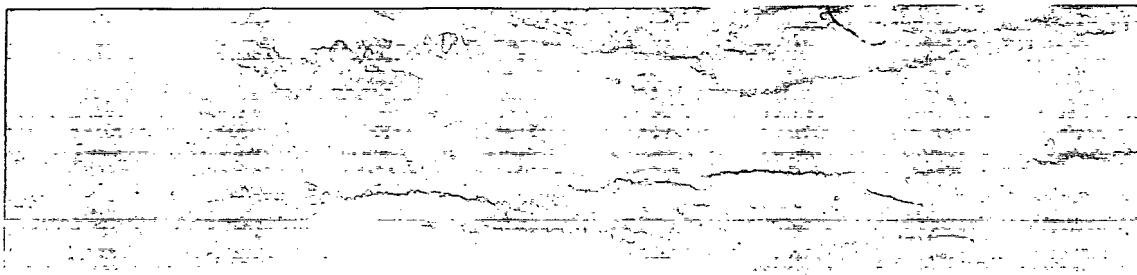


Photo #21

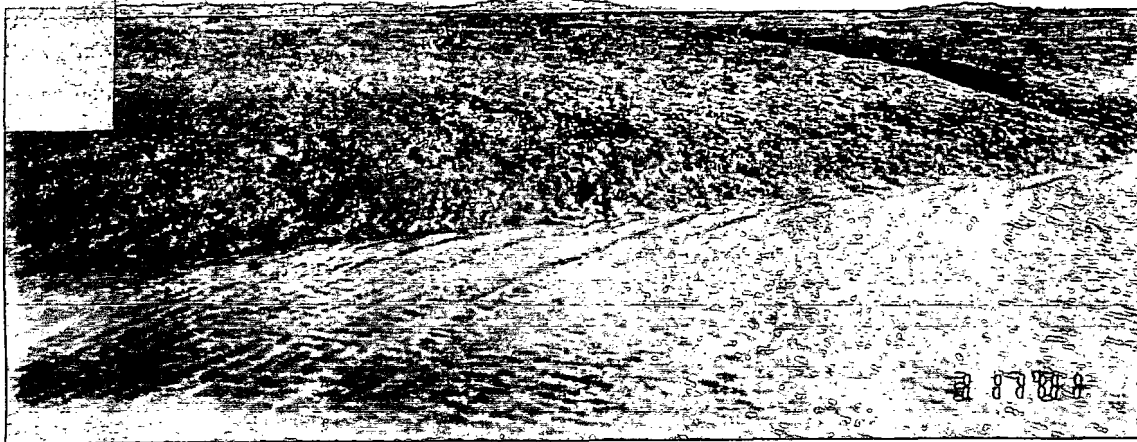
Water ne Flush into lagoons.



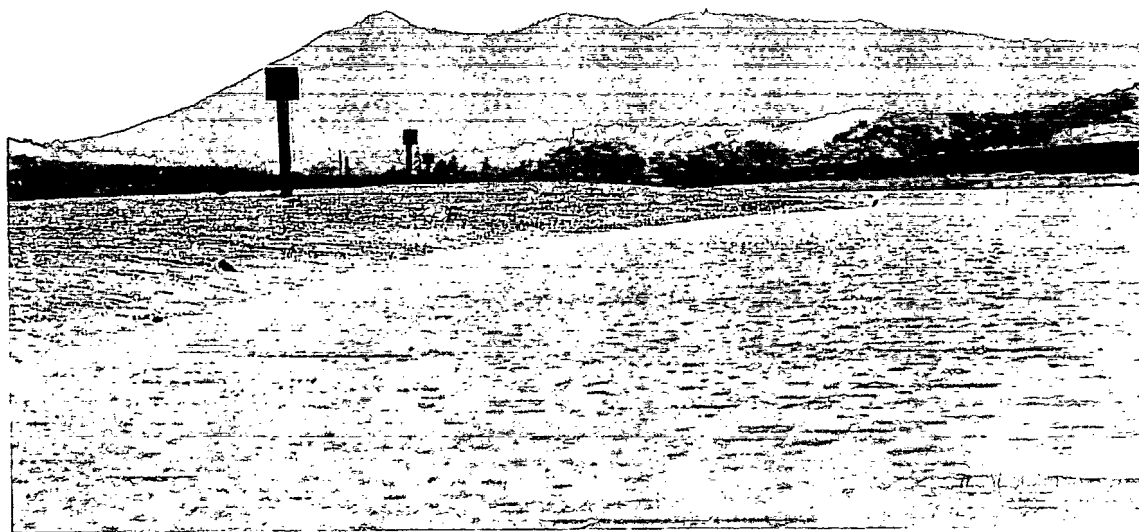
Mud/Sediment along banks of Lower
Nueces Creek.

Photo #22

#22



Plug at
Marker 25
not quite low
tide (5.8)
4: PM 3/17/01
Photo #23



#23

p. 19/16



Mouth of
Novaya River.
2/5/01

Photo #24

#24

p. 15/16



Photo #25

#25

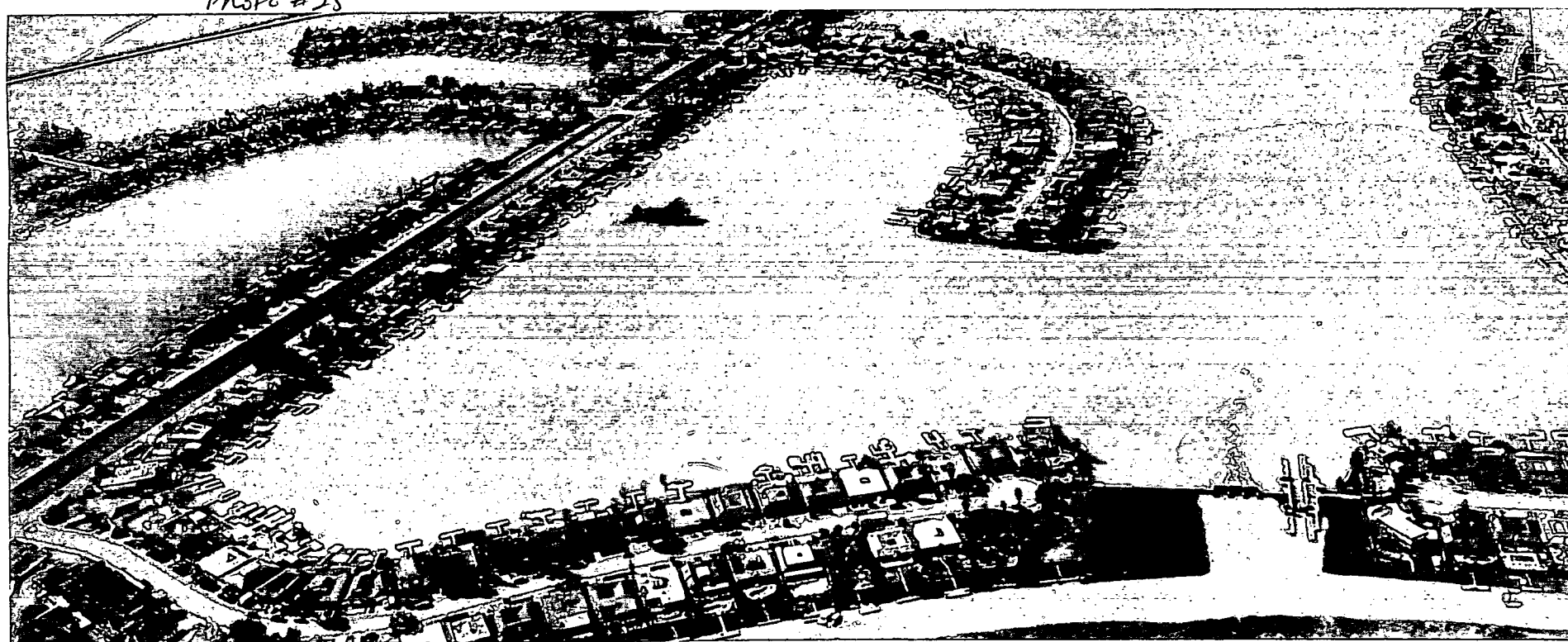


Photo #26

#26

P. 16/16

FYI

Pacheco Pond / Novato Creek - Fish Kill Incident #2

----- Original Message -----

From: Susan
Lattanzio

To: sfg@rb2.swrcb.ca.gov

Cc: jmcaster@spk.usace.army.mil ; NLF@rb2.swrcb.ca.gov ; tlandis@dtsc
.ca.gov ; yamamoto@ospr.dfg.ca.gov ; drh@rb2.swrcb.ca.gov ; jdp@rb2.swrc
b.ca.gov ; TMcgarry@dtsc.ca.gov ; DNicholson@marin.org ; lizlewis@marin.
org

Sent: 04/20/2001 9:41:01 AM

Subject: Re: Pacheco Pond Pollution, fish
kill and environmental health hazard

To: Susan Gladstone, RWQCB

From: Sue Lattanzio

Re: Second incident in 6 months at Pacheco Pond

Today, I was called by several concerned citizens regarding the second
incident in 6 months at Pacheco Pond also known as Ignacio Reservoir in
Novato.

On 4/19 at approximately 1:00PM the County of Marin, Flood Control Dist
rict was
removing the tide gates which link Novato Creek to the Pond.

(See photo). When they completely removed the gates this allowed water
to

flow back into the Pond from Novato Creek at a very forceful rate and stirred up material in the sediment from the drainage channel linking the Pond with the creek. This could potentially be a continuation of a similar incident reported October 23, 2000 reported to numerous agencies including RWQCB, City of Novato, Marin County EHS, and DFG. A strong sulfur smell was reported by nearby office workers who noticed the smell from inside the building and were concerned about the dead wildlife and discoloration of the plume entering the pond. When I accidentally touched the water when taking water samples the water and experienced a burning sensation.. Hundreds of small fish were dead or jumping to escape contact with the water were observed by several fisherman in the channel to the creek. Novato Creek is a spawning area for threatened steelhead and endangered coho salmon. Steelhead, juvenile striped bass, smelt and bullheads were observed in a distressed or dead state. One of the county workers reported a fisherman catching a steelhead that morning. I have taken water samples from locations marked on the aerial photo attached and retained a sample of several of the dead fish.

Samples were taken from identified locations at 4:00PM in sterile containers supplied from Marin County EHS. Low tide allowing flushing of the Pond to go back out to the Novato Creek occurred at approximately 7:00PM (.6 tide). A second sample set from the pond was taken again at 8:00 AM 4/20. I have kept these in ice/refrigerated and maintained chain of custody documentation.

I would hope to see water and sediment samples analyzed from this incident immediately as this presents an environmental as well as health and safety hazard. The discharge of known pollutants into waters of the State in a protected creek is also an issue.

ue.

I have attached a letter from WaterKeepers requesting testing from the previous incident as well as photos. Please call at you earliest convenience.

Sue Lattanzio

Friends of Novato Creek

415-883-8339

SueSample Locations

Pond plume-Cloudy White discoloration

Sample #1 (Location by BMK Blvd)

Sample#2 (Clean area where plume did not reach)

Photo Attachments:

Sample #1 Location

Sample #2 Location

Overview of Pacheco Pond 1 2

Fish

Tide gates

Waterkeepers letter

--- Susan Lattanzio
--- 1092 Bel Marin Keys Blvd.
--- Novato, CA 94949
--- suelattanzio@earthlink.net
--- Phone: 415-883-8339
--- Fax: 415-883-0612

--- Susan Lattanzio
--- 1092 Bel Marin Keys Blvd.
--- Novato, CA 94949
--- suelattanzio@earthlink.net
--- Phone: 415-883-8339
--- Fax: 415-883-0612