



CENTRAL VALLEY REGIONAL
WATER QUALITY CONTROL BOARD

CLEAN WATER ACT
SECTION 305(b) AND 303(d)
INTEGRATED REPORT
FOR THE CENTRAL VALLEY REGION

MAY 2009 DRAFT FINAL

APPENDIX I
DELTA WATERWAYS



CALIFORNIA ENVIRONMENTAL PROTECTION AGENCY

THIS PAGE IS INTENTIONALLY BLANK

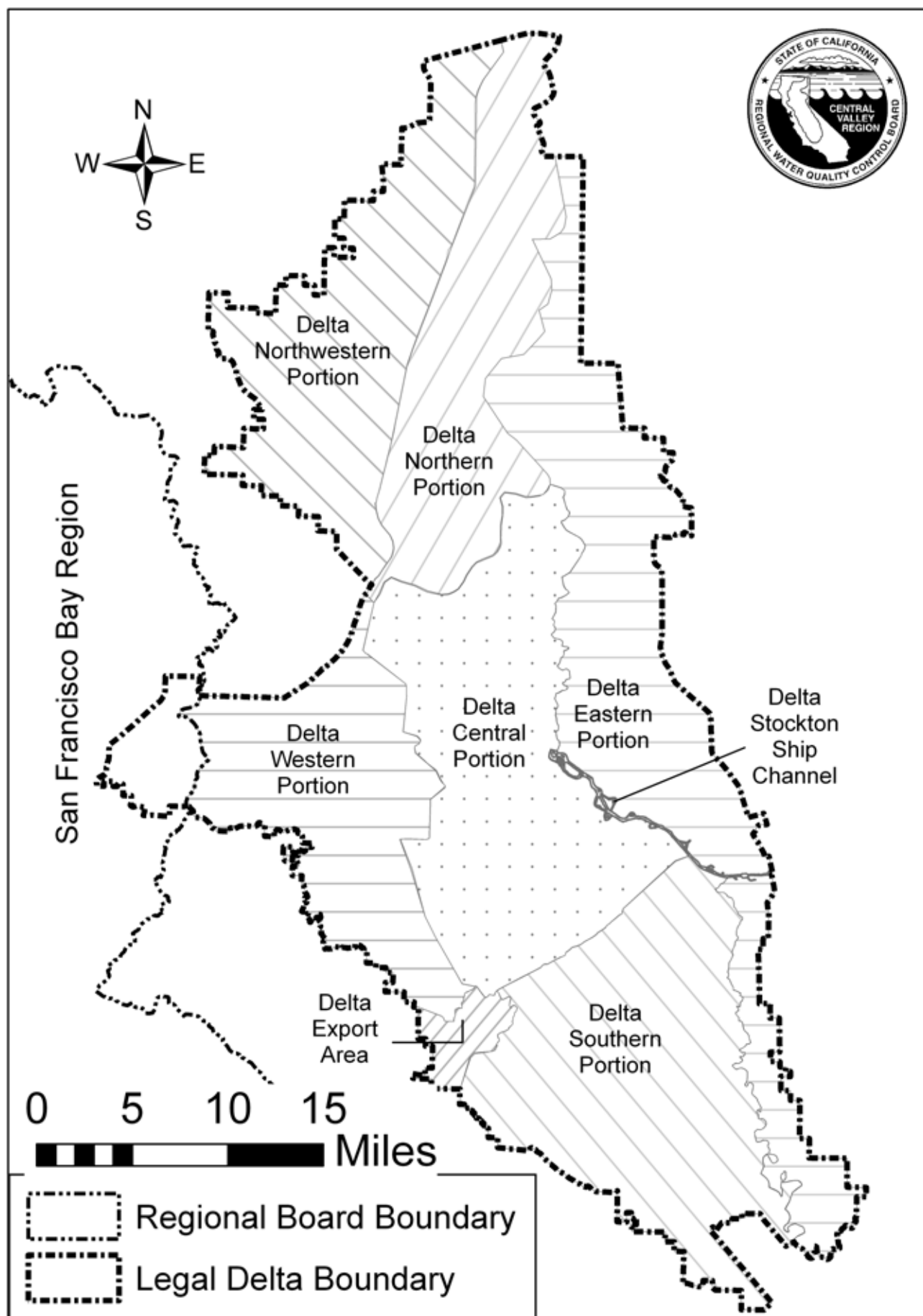
This appendix contains a series of maps that show the Delta Waterways, by Delta portion, for the proposed revised 303(d) list for the Central Valley Region. Figure 1 provides an overview of the eight Delta portions. Figures 2 – 10 show the (numbered) waterways within each Delta portion. Table 1 lists the individual waterway names, by Delta portion, which correspond with the numbered waterways in the maps. Proposed 303(d) listings, by Delta portion, apply to all of the waterways within each portion unless there are proposed specific listings for waterbody segments wholly or partly within the legal Delta. In these cases, the proposed 303(d) listings decisions for the specific individual waterways would apply instead of the more general listing decisions for the Delta Waterways. Listings for specific water body segments that are partly in the “legal” Delta and partly outside the “legal” Delta apply to the entirety of these segments.

The Delta Waterways described in the figures and tables below were derived from the list of “Sacramento-San Joaquin Delta Waterways” in Appendix 42 of the Water Quality Control Plan for the Sacramento River and San Joaquin River Basins (Basin Plan), and from the associated Geographic Information System (GIS) files used to create the maps in Appendix 42. However, the numbering of the Delta Waterways is not identical between the Appendix 42 and Table 1 (below).

As described in Appendix 42, “[T]he following [Delta Waterways] are distinct, readily identifiable waterbodies within the boundaries of the “Legal” Delta that are hydrologically connected by surface water flows (not including pumping) to the Sacramento and/or San Joaquin rivers.” Also, as described in the footnotes to Appendix 42, “[T]he Delta Waterways include only those reaches that are located within the “Legal” Delta, as defined in Section 12220 of the California Water Code” and “[W]hen flooded, the entire Yolo Bypass is a Delta Waterway. When the Yolo Bypass is not flooded, the Toe Drain is the only Delta Waterway within the Yolo Bypass.”

Several Delta Waterways cross Delta portion boundaries and, therefore, they occur in more than one Delta portion (e.g., adjacent segments of “False River” are within the Delta Central portion and within the Delta Western portion).

Figure 1. Delta Waterways Portions



The map displays the Central Valley Region of the Delta Waterways, divided into several portions: Delta Northwestern Portion, Delta Northern Portion, Delta Western Portion, Delta Southern Portion, Eastern Delta Portion, and Delta Export Portion. The Delta Waterways - Central Portion are highlighted in black. Numerous numerical identifiers (e.g., 129, 60, 105, 48, 87, 112, 25, 111, 23, 112, 81, 101, 93, 68, 109, 137, 41, 46, 91, 103, 107, 55, 67, 125, 147, 65, 78, 18, 96, 19, 79, 62, 131, 97, 89, 78, 39, 140, 104, 74, 58, 88, 143, 28, 89, 78, 130, 9) are placed along the waterways. A legend in the bottom left corner defines the symbols: Legal Delta Boundary (dashed line), Delta - Central Portion Boundary (solid line), Delta Waterways - Central Portion (black fill), and Other Delta Waterways and Tributaries (gray fill). A scale bar (0 to 10 miles) and a compass rose (N, S, E, W) are located in the bottom right corner. The State of California Regional Water Quality Control Board logo is in the bottom left corner.

Figure 3. Delta Waterways - Eastern Portion (north)

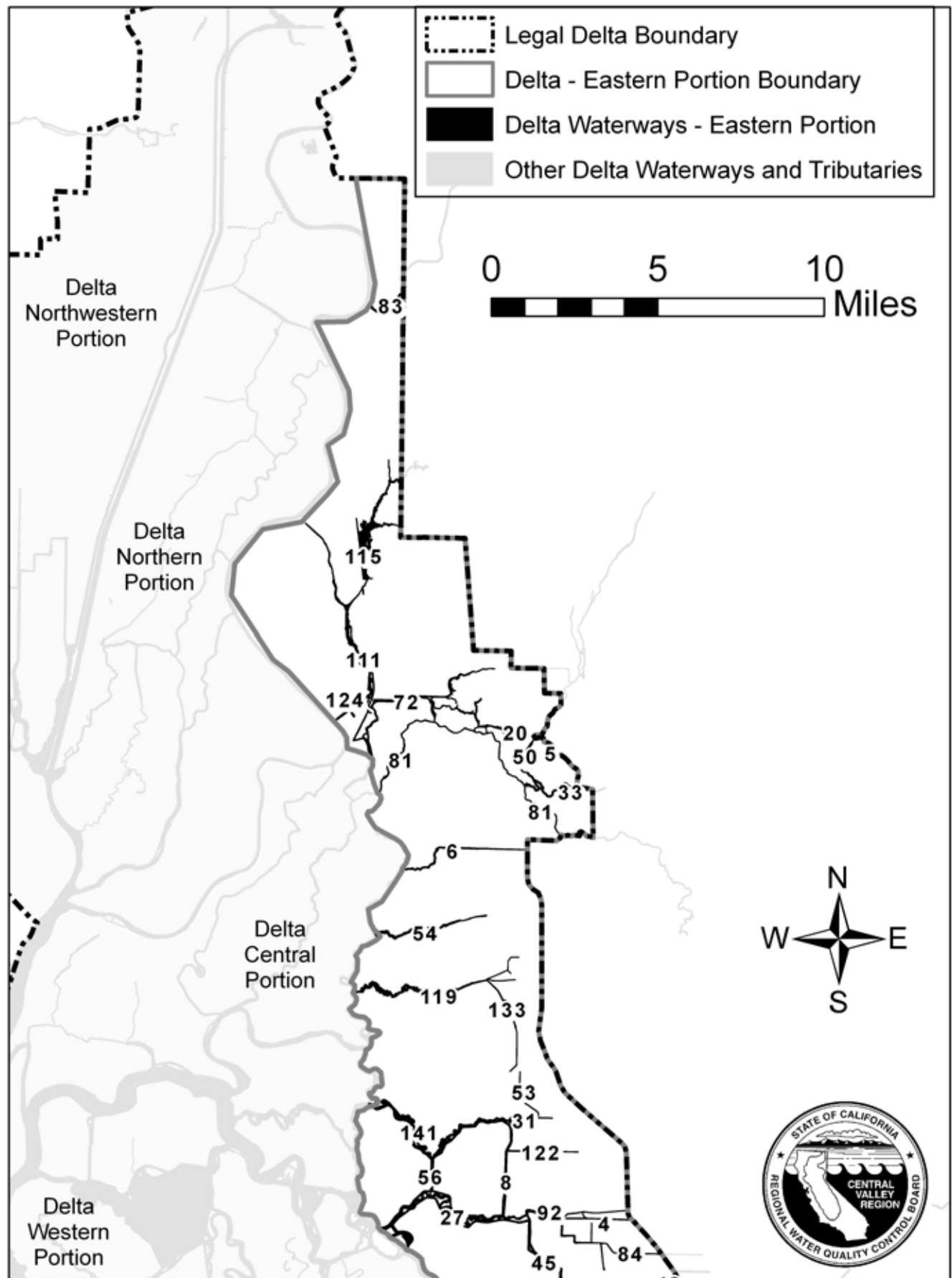


Figure 4. Delta Waterways - Eastern Portion (south)

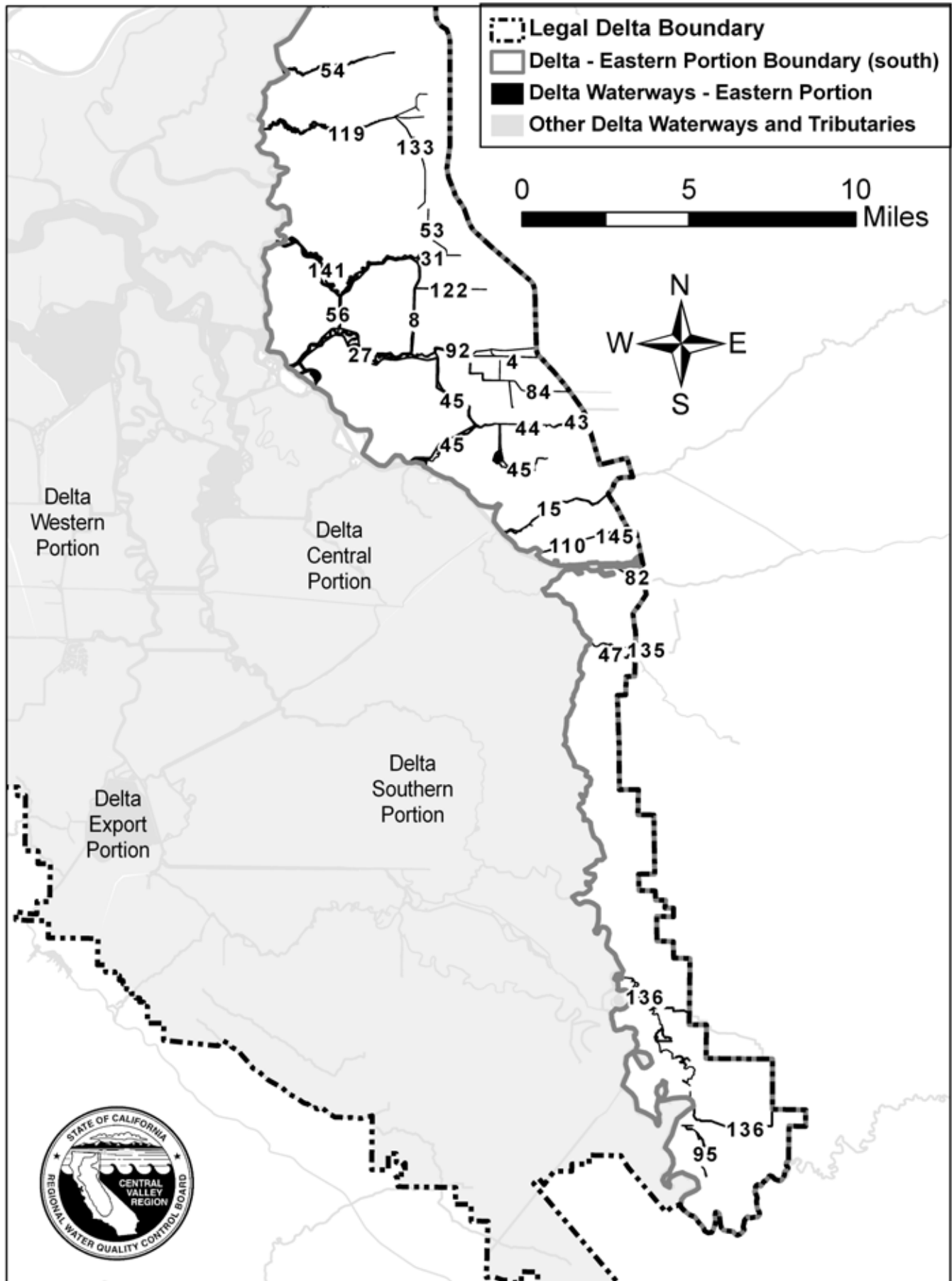


Figure 5. Delta Waterways - Export Area

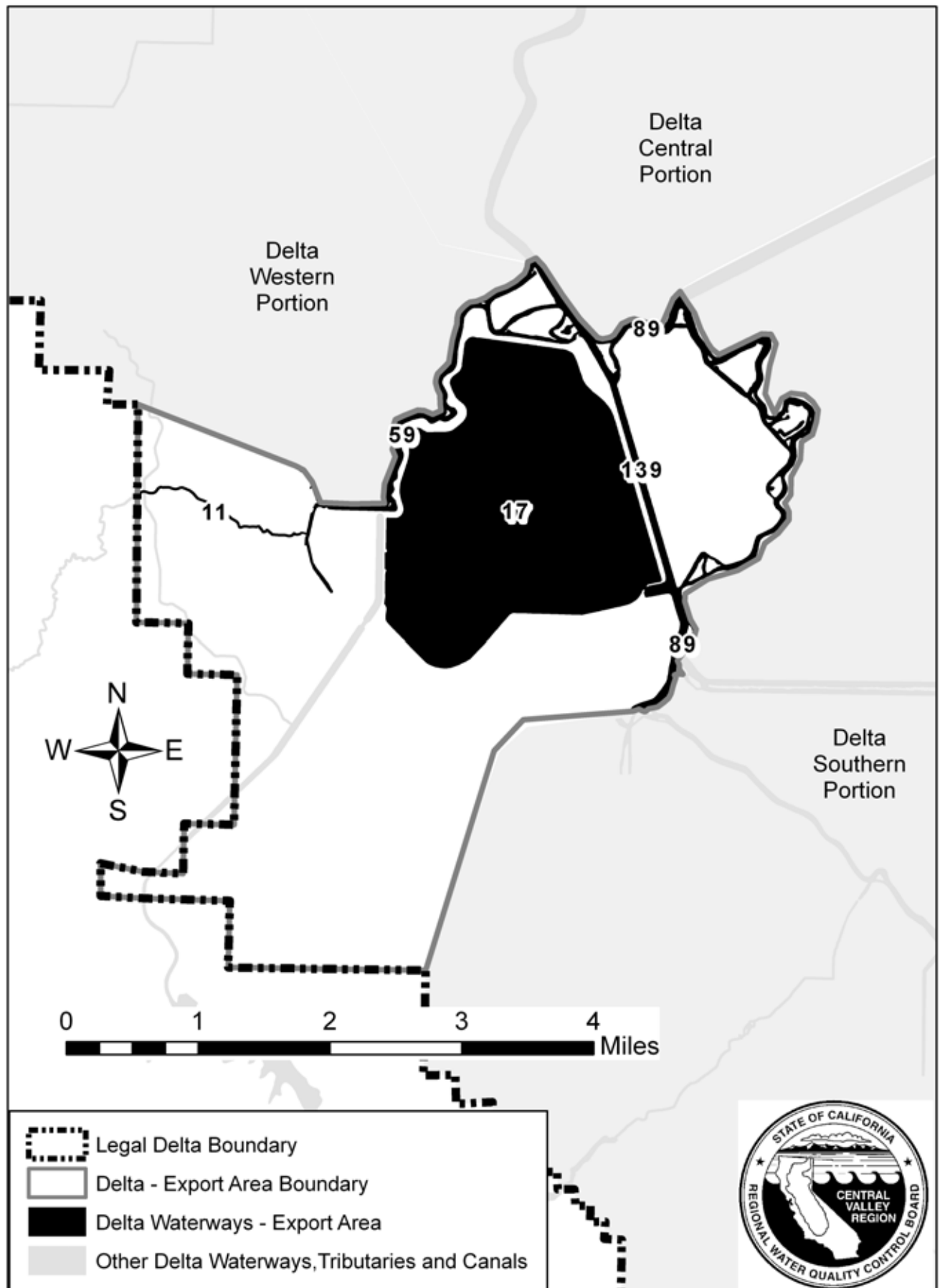


Figure 6. Delta Waterways - Northern Portion

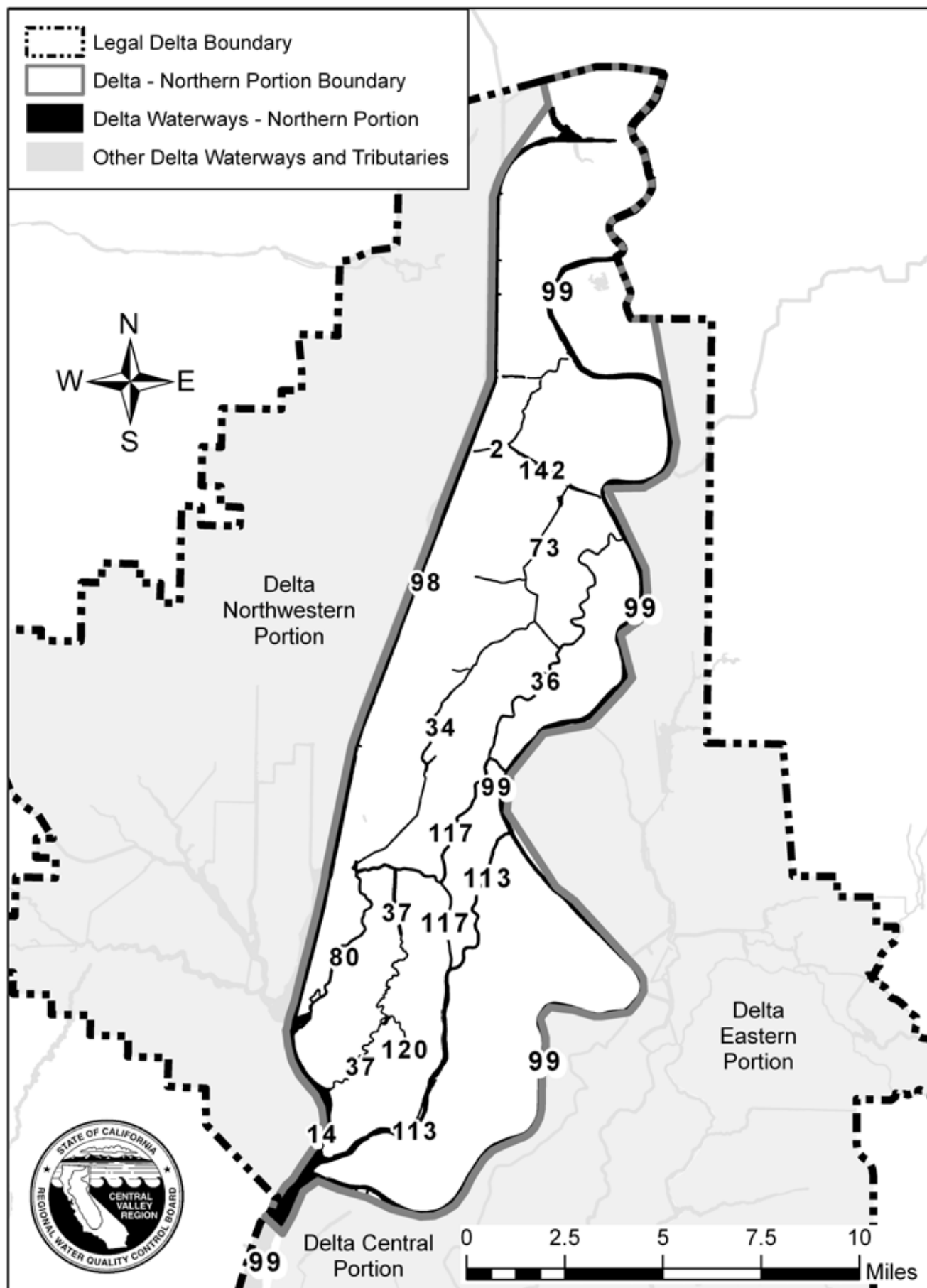


Figure 7. Delta Waterways - Northwestern Portion

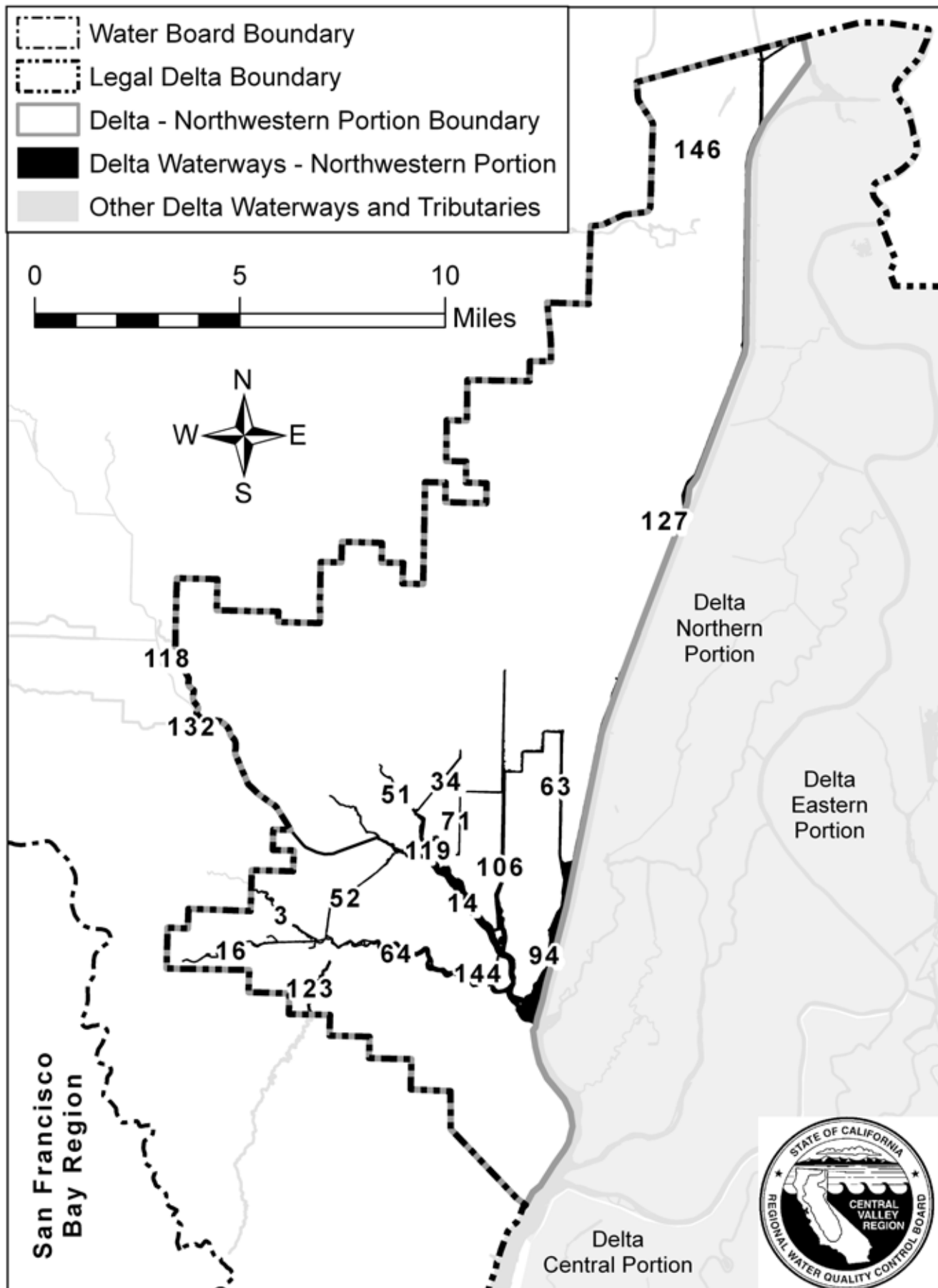


Figure 8. Delta Waterways - Southern Portion

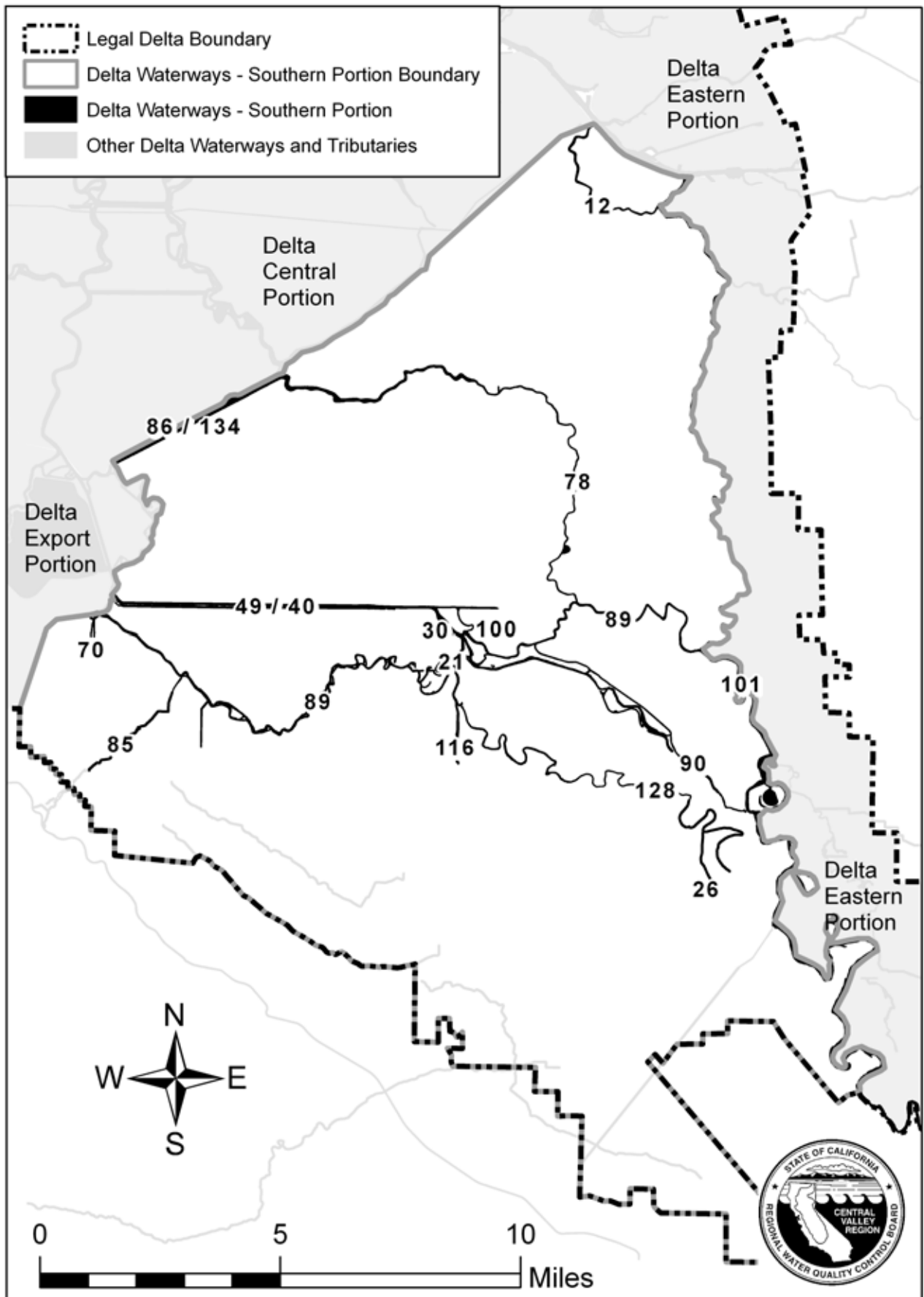


Figure 9. Delta Waterways - Stockton Ship Channel

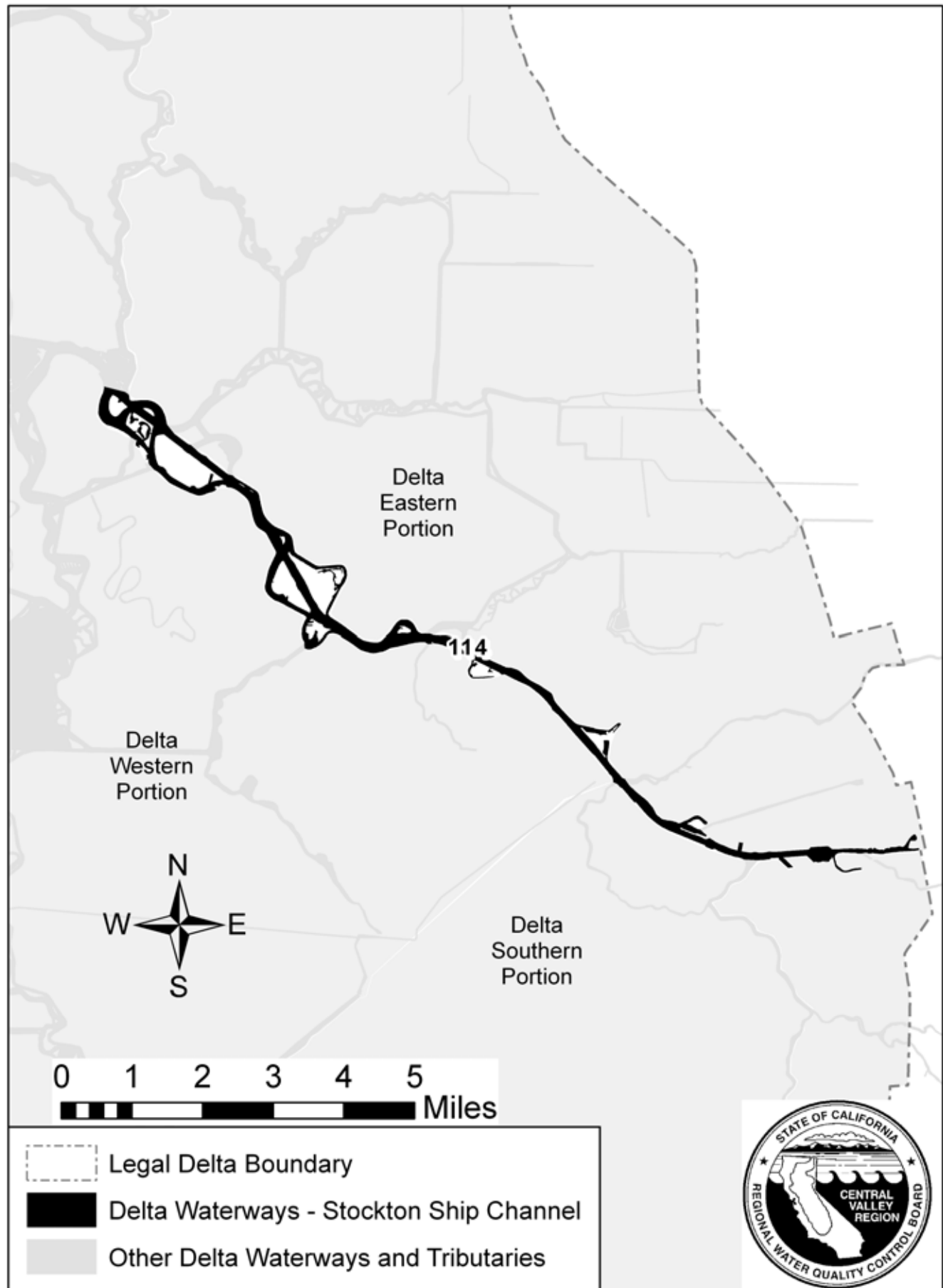
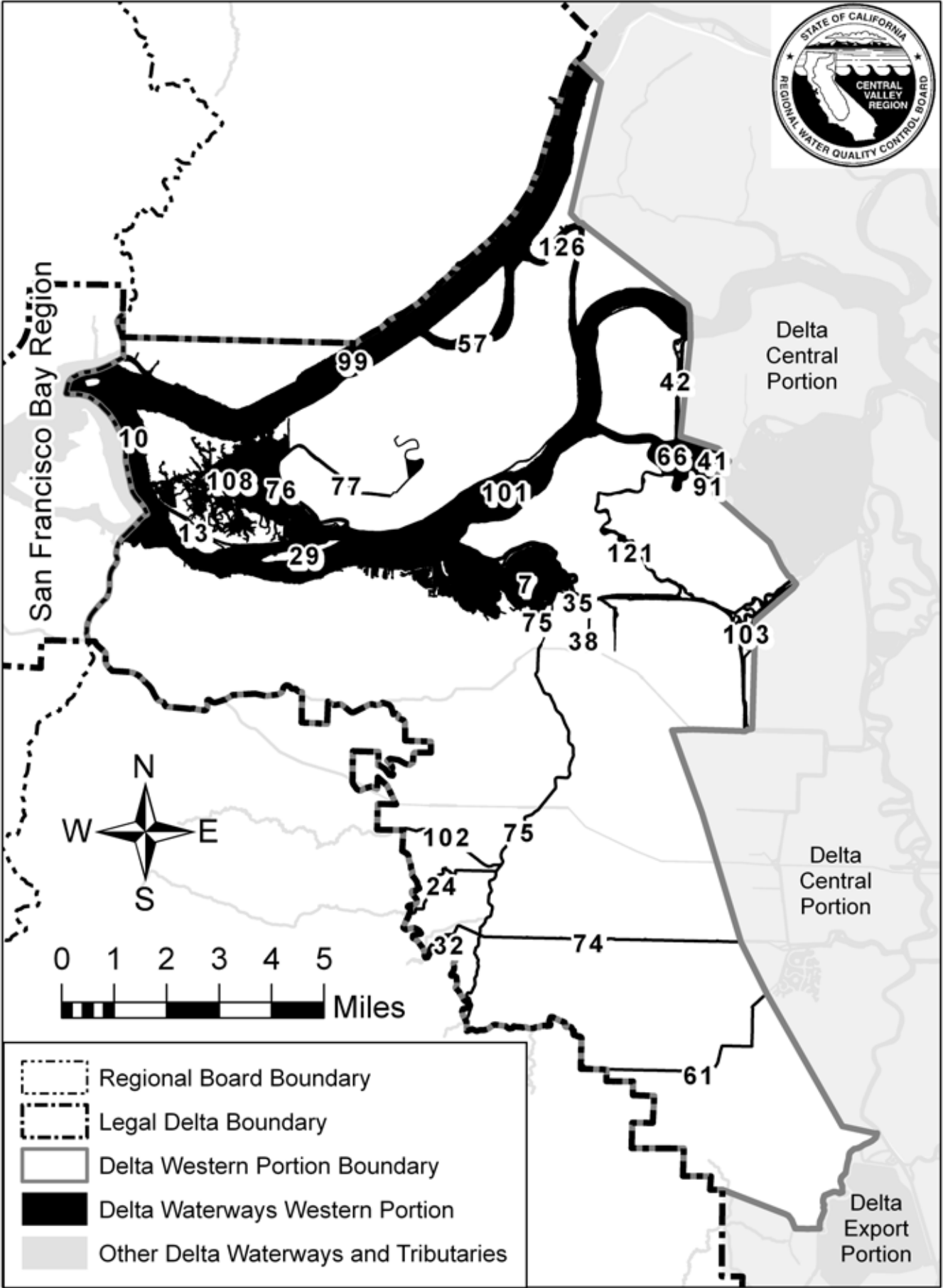


Figure 10. Delta Waterways - Western Portion



Delta Waterways - Central Portion

Water Body Name	ID #
Black Slough	9
Columbia Cut	18
Connection Slough	19
Dead Dog Slough	22
Dead Horse Cut	23
Delta Cross Channel	25
Discovery Bay	28
Empire Cut	39
False River	41
Franks Tract	46
Georgiana Slough	48
Holland Cut	55
Indian Slough	58
Jackson Slough	60
Latham Slough	62
Little Connection Slough	65
Little Mandeville Cut	67
Little Potato Slough	68
Little Venice Island	147
Main Canal	74
Middle River	78
Mildred Island	79
Mokelumne River	81
North Fork Mokelumne River	87
Old River	89
Piper Slough	91
Potato Slough	93
Rhode Island	96
Rock Slough	97
San Joaquin River	101
Sand Mound Slough	103
Santa Fe Cut	104
Sevenmile Slough	105
Sheep Slough	107
Short Slough	109
Snodgrass Slough	111
South Fork Mokelumne River	112
Three River Reach	125
Tomato Slough	129
Trapper Slough	130
Turner Cut	131
Washington Cut	137
Werner Dredger Cut	138
Whiskey Slough	140
Woodward & North Victoria Canals	88 / 143

Delta Waterways - Eastern Portion

Water Body Name	ID #
Bear Creek	4
Bear Slough	5
Beaver Slough	6
Bishop Cut	8
Calaveras River	15
Cosumnes River	20
Disappointment Slough	27
Dredger Cut	31
Dry Creek	33
Fivemile Creek	44
Fivemile Slough	44
Fourteenmile Slough	45
French Camp Slough	47
Grizzly Slough	50
Highline Canal	53
Hog Slough	54
Honker Cut	56
Lost Slough	72
Mokelumne River	81
Mormon Slough	82
Morrison Creek	83
Mosher Slough	84
Pixley Slough	92
Red Bridge Slough	95
Smith Canal	110
Snodgrass Slough	111
Stone Lakes	115
Sycamore Slough	119
Telephone Cut	122
The Meadows Slough	124
Upland Canal (Sycamore Slough tributary)	133
Walker Slough	135
Walthall Slough	136
White Slough	141
Yosemite Lake	145

Delta Waterways - Export Area

Water Body Name	ID #
Brushy Creek	11
Clifton Court Forebay	17
Italian Slough	59
Old River	89
West Canal	139

Delta Waterways - Northern Portion

Water Body Name	ID #
Babel Slough	2
Cache Slough	14
Duck Slough	34
Elk Slough	36
Elkhorn Slough	37
Main Canal	73
Miner Slough	80
Sacramento Deep Water Channel	98
Sacramento River	99
Steamboat Slough	113
Sutter Slough	117
Taylor Slough	120
Winchester Lake	142

Delta Waterways - Northwestern Portion

Water Body Name	ID #
Barker Slough	3
Cache Slough	14
Calhoun Cut	16
Duck Slough	34
Haas Slough	51
Hastings Cut	52
Liberty Cut	63
Lindsey Slough	64
Lookout Slough	71
Prospect Slough	94
Shag Slough	106
Sweany Creek	118
Sycamore Slough	119
The Big Ditch	123
Toe Drain	127
Ulati Creek	132
Wright Cut	144

Delta Waterways - Southern Portion

Water Body Name	ID #
Burns Cutoff	12
Crocker Cut	21
Deuel Drain	26
Doughty Cut	30
Grant Line Canal	49
Livermore Yacht Club	70
Middle River	78
Mountain House Creek	85
Old River	89
Paradise Cut	90
Salmon Slough	100
San Joaquin River	101
Sugar Cut	116
Tom Paine Slough	128
Victoria & North Canals	86 / 134
Walthall Slough	136

Delta Waterways - Stockton Ship Channel

Water Body Name	ID #
Stockton Deep Water Channel	114

Delta Waterways - Western Portion

Water Body Name	ID #
Big Break	7
Broad Slough	10
Cabin Slough	13
Deer Creek (tributary to Marsh Creek)	24
Donlon Island	29
Dutch Slough	35
Emerson Slough	38
False River	41
Fisherman's Cut	42
Horseshoe Bend	57
Kellogg Creek	61
Little Franks Tract	66
Main Canal	74
Marsh Creek	75
Mayberry Cut	76
Mayberry Slough	77
Piper Slough	91
Sacramento River	99
San Joaquin River	101
Sand Creek	102
Sand Mound Slough	103
Sherman Lake	108
Taylor Slough (near Franks Tract)	121
Threemile Slough	126