



August 25, 2016

Main Office

10060 Goethe Road
Sacramento, CA 95827-3553
Tel: 916.876.6000
Fax: 916.876.6160

Treatment Plant

8521 Laguna Station Road
Elk Grove, CA 95758-9550
Tel: 916.875.9000
Fax: 916.875.9068

Board of Directors

Representing:

County of Sacramento
County of Yolo
City of Citrus Heights
City of Elk Grove
City of Folsom
City of Rancho Cordova
City of Sacramento
City of West Sacramento

Prabhakar Somavarapu

District Engineer

Ruben Robles

Director of Operations

Christoph Dobson

Director of Policy & Planning

Karen Stoyanowski

Director of Internal Services

Joseph Maestretti

Chief Financial Officer

Claudia Goss

Public Affairs Manager

California Regional Water Quality Control Board, Central Valley Region
c/o Mr. Patrick Morris, Statewide Mercury Program for Reservoirs
11020 Sun Center Drive #200
Rancho Cordova, CA 95670-6114

**SUBJECT: Black Crown Lake – Removal of COMM Beneficial Use
(Statewide Mercury Program for Reservoirs)**

Dear Mr. Morris:

Thank you for including the Sacramento Regional County Sanitation District (Regional San) as a stakeholder in the Statewide Mercury Program for Reservoirs, and for coordinating with our staff on the issues related to Black Crown Lake. We appreciate the productive dialogue with staff from the Regional and State Water Boards.

Per our recent discussion, we are submitting information related to the use of Black Crown Lake and what we see as an incorrect designation of this water body associated with the COMM beneficial use, and we request the correction of this information in documents related to the Statewide Mercury Program for Reservoirs.

The COMM beneficial use is described in the Water Quality Control Plan for the Sacramento and San Joaquin River Basins as “*Commercial and Sport Fishing (COMM) - Uses of water for commercial or recreational collection of fish, shellfish, or other organisms including, but not limited to, uses involving organisms intended for human consumption or bait purposes.*” Black Crown Lake is remote, fenced, and monitored, and is not used for commercial or recreational fishing as described in the beneficial use definition.

Black Crown Lake is a remote water body that lies on private property owned by Regional San. The lake is located within a 2150-acre expanse of open space surrounding the Sacramento Regional Wastewater Treatment Plant (SRWTP) called the Bufferlands. This space is used to minimize the potential for odor and other nuisances that could impact the surrounding neighborhoods. The Bufferlands, including Black Crown Lake, are actively monitored, maintained, and protected by Regional San, and public access is restricted.

The Bufferlands site is surrounded peripherally with a combination of chain link, barbed wire, and wire-field fencing with locked gates to prevent and deter access. Breaks in the fence exist where land features such as Interstate 5 and levees exist as physical barriers that block access. A tree screen also exists to

California Regional Water Quality Control Board, Central Valley Region
c/o Mr. Patrick Morris, Statewide Mercury Program for Reservoirs
Page 2
August 25, 2016

the west of the lake. "No Trespassing" signage is placed around the site at 300-foot intervals. Authorized vehicles must access the site through a monitored security gate. All other access routes for vehicle entry are gated and locked. There are existing and planned conservation easements in the areas north and south of the lake that provide additional protection, preservation, and public access restriction in the area.

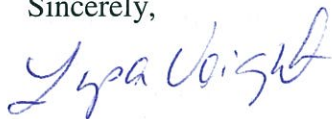
The Bufferlands area, including Black Crown Lake, is visually monitored by Regional San staff that includes 8-10 biologists and natural resource professionals that are onsite a minimum of 8 hours a day, 5 days a week. Regional San has a contract with Sacramento County Park Rangers, who patrol the entire Bufferlands area Monday through Friday for 4 hours a day, and for 8 hours on weekend days. Security staff and operations staff are also present at the SRWTP. The facility is staffed 24 hours a day.

There has been very limited evidence of unauthorized access over the course of more than two decades that the site has been secured and monitored, and there have been no reports of fishing in this lake. Recent photographs are attached for your reference that show that the site is undisturbed with no evidence of trespass. Note that the footpaths are used on occasion for closely coordinated Bufferlands tours and by Regional San personnel who monitor the site.

Please see the attachments that show recent photographs of Black Crown Lake, including the perimeter fencing and easements for additional information.

We request removal of the beneficial use "COMM" associated with Black Crown Lake in the Statewide Mercury Program for Reservoirs. If you have any questions or concerns related to the information provided or the request, please contact me at (916) 876-6038 or VoightL@sacsewer.com or Nanette Bailey at (916) 876-4003 or BaileyN@sacsewer.com.

Sincerely,

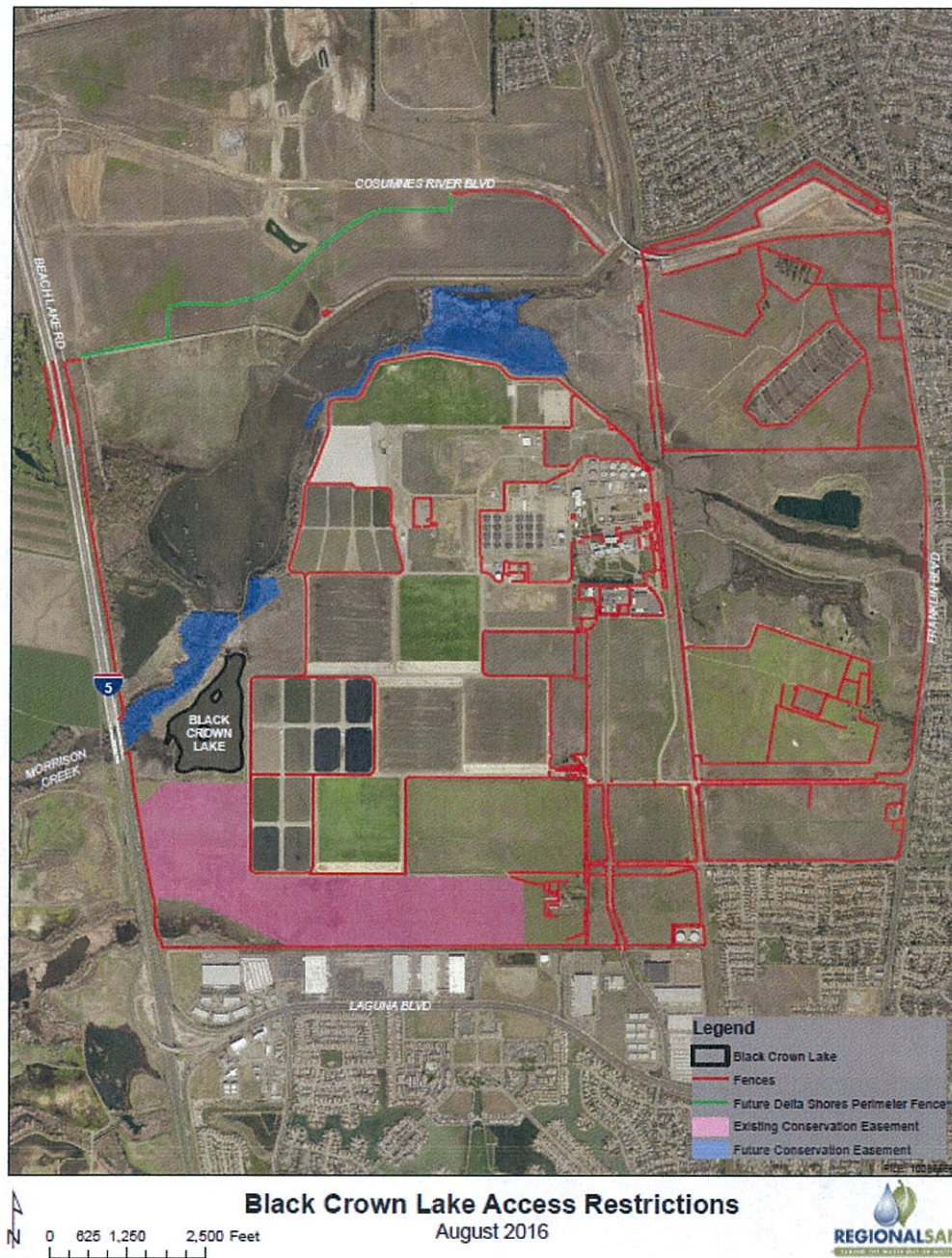


Lysa Voight

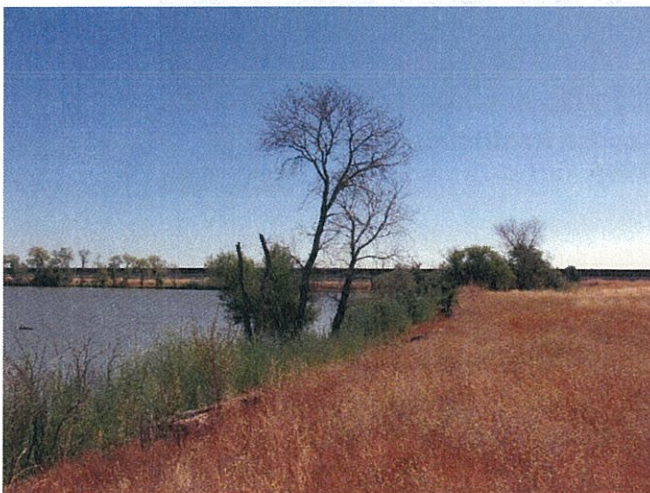
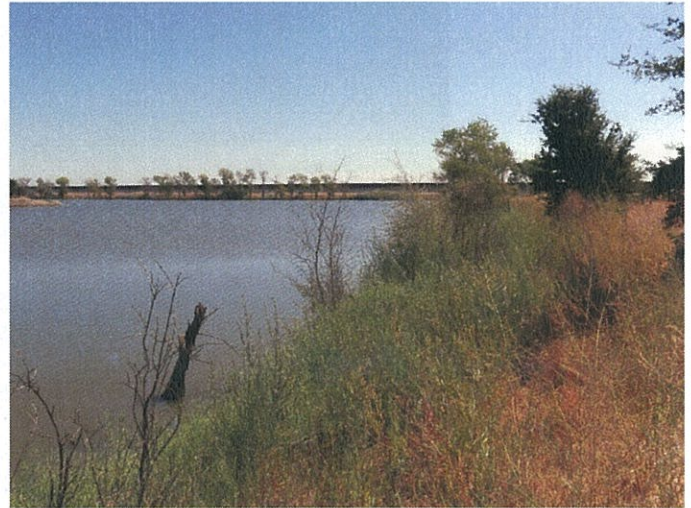
cc: Michelle Wood

Attachments: Black Crown Lake site map and photographs

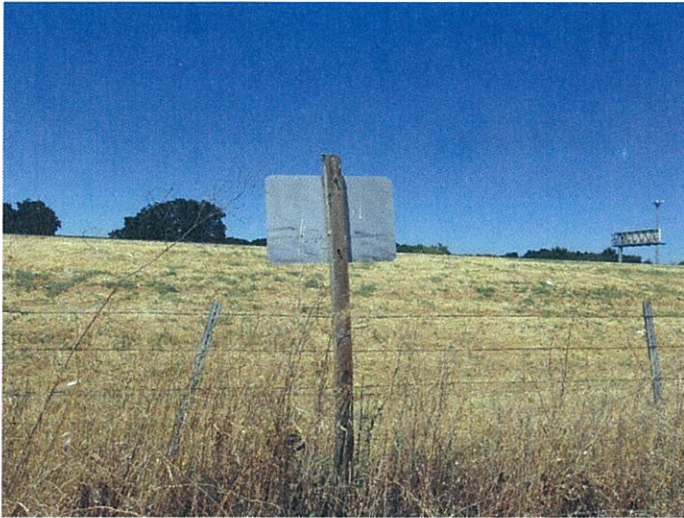
Black Crown Lake Site Map



Black Crown Lake, photographs of undisturbed areas surrounding lake



Black Crown Lake, photographs of fencing and signage



SRWTP Perimeter Levee (physical barrier)

