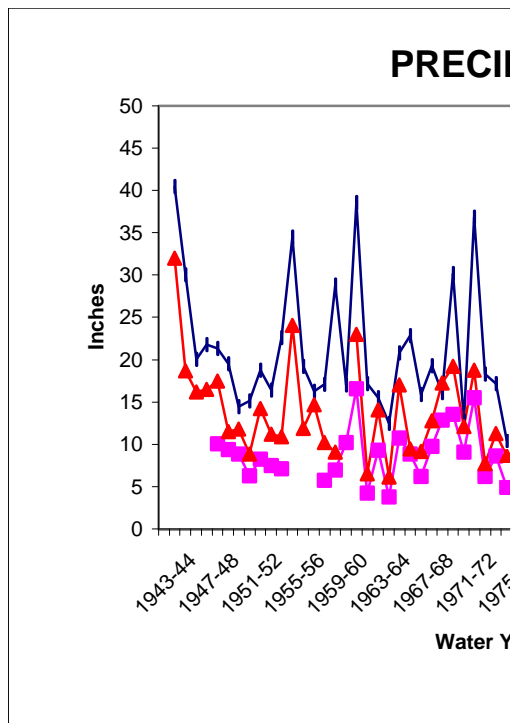


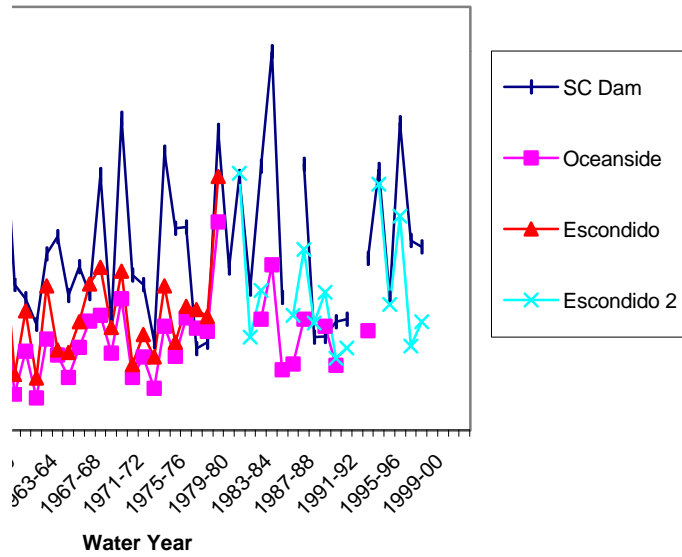
Water year SC Dam Oceanside Escondido Escondido 2

1940-41	40.5		31.97
1941-42	30.03		18.65
1942-43	20.05		16.15
1943-44	21.76		16.49
1944-45	21.36	10.04	17.51
1945-46	19.55	9.4	11.51
1946-47	14.43	8.83	11.81
1947-48	15.11	6.3	8.85
1948-49	18.79	8.27	14.2
1949-50	16.42	7.5	11.23
1950-51	22.59	7.08	10.86
1951-52	34.5		24.03
1952-53	19.25		11.86
1953-54	16.27		14.71
1954-55	17.1	5.74	10.2
1955-56	28.85	6.99	9.11
1956-57	17.04	10.19	
1957-58	38.6	16.53	23.02
1958-59	17.2	4.22	6.54
1959-60	15.52	9.33	14.07
1960-61	12.48	3.75	6.15
1961-62	20.79	10.73	16.99
1962-63	22.88	8.86	9.46
1963-64	15.87	6.2	9.19
1964-65	19.28	9.79	12.81
1965-66	16.12	12.88	17.28
1966-67	30.15	13.54	19.19
1967-68	12.79	9.08	12.1
1968-69	36.85	15.52	18.73
1969-70	18.28	6.17	7.68
1970-71	17.2	8.6	11.28
1971-72	10.43	4.89	8.66
1972-73	32.85	12.25	16.99
1973-74	23.79	8.73	10.33
1974-75	23.99	13.25	14.59
1975-76	9.62	11.99	14.19
1976-77	10.4	11.66	13.41
1977-78	35.42	24.57	29.92
1978-79	19.1		
1979-80	29.94		30.36
1980-81	16.64		10.96
1981-82	31.19	13.07	16.51
1982-83	44.74	19.53	
1983-84	15.67	7.08	
1984-85		7.79	13.51



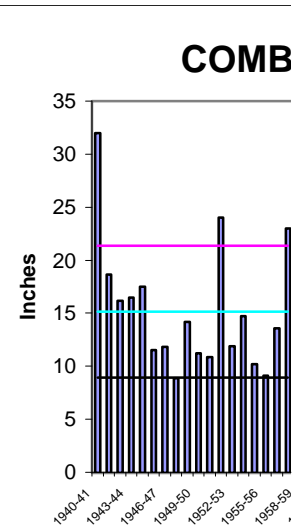
1985-86	31.37	13.08	21.34
1986-87	10.96		12.65
1987-88	11.06	12.27	16.3
1988-89	12.8	7.64	8.47
1989-90	13.09		9.71
1990-91			
1991-92	20.26	11.72	
1992-93	30.78		29.05
1993-94	15.57		14.82
1994-95	36.29		25.26
1995-96	22.4		9.93
1996-97	21.67		12.81
1997-98			
1998-99			
1999-00			
2000-01			

PRECIPITATION



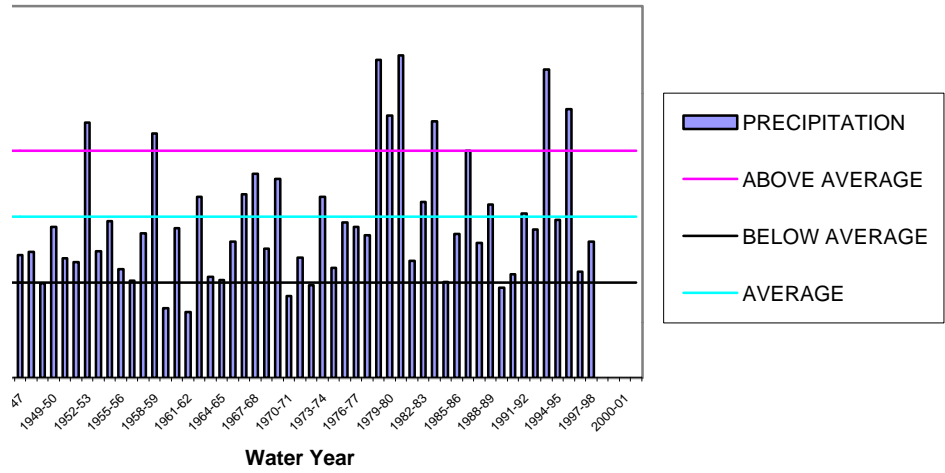
COMBINED DATA SET

NUMBER	STATION	STATE	WATER YEAR	TOTAL PRECIPIT.	ABOVE A'	BELOW A'	AVER
42862	ESCONDII	CA	1940-41	31.97	21.3838	8.93721	15.1
42862	ESCONDII	CA	1941-42	18.65	21.3838	8.93721	15.1
42862	ESCONDII	CA	1942-43	16.15	21.3838	8.93721	15.1
42862	ESCONDII	CA	1943-44	16.49	21.3838	8.93721	15.1
42862	ESCONDII	CA	1944-45	17.51	21.3838	8.93721	15.1
42862	ESCONDII	CA	1945-46	11.51	21.3838	8.93721	15.1
42862	ESCONDII	CA	1946-47	11.81	21.3838	8.93721	15.1
42862	ESCONDII	CA	1947-48	8.85	21.3838	8.93721	15.1
42862	ESCONDII	CA	1948-49	14.2	21.3838	8.93721	15.1
42862	ESCONDII	CA	1949-50	11.23	21.3838	8.93721	15.1
42862	ESCONDII	CA	1950-51	10.86	21.3838	8.93721	15.1
42862	ESCONDII	CA	1951-52	24.03	21.3838	8.93721	15.1
42862	ESCONDII	CA	1952-53	11.86	21.3838	8.93721	15.1
42862	ESCONDII	CA	1953-54	14.71	21.3838	8.93721	15.1
42862	ESCONDII	CA	1954-55	10.2	21.3838	8.93721	15.1
42862	ESCONDII	CA	1955-56	9.11	21.3838	8.93721	15.1
42862	ESCONDII	CA	1956-57	13.575	21.3838	8.93721	15.1
42862	ESCONDII	CA	1957-58	23.02	21.3838	8.93721	15.16051
42862	ESCONDII	CA	1958-59	6.54	21.3838	8.93721	15.16051
42862	ESCONDII	CA	1959-60	14.07	21.3838	8.93721	15.16051
42862	ESCONDII	CA	1960-61	6.15	21.3838	8.93721	15.16051
42862	ESCONDII	CA	1961-62	16.99	21.3838	8.93721	15.16051
42862	ESCONDII	CA	1962-63	9.46	21.3838	8.93721	15.16051
42862	ESCONDII	CA	1963-64	9.19	21.3838	8.93721	15.16051
42862	ESCONDII	CA	1964-65	12.81	21.3838	8.93721	15.16051
42862	ESCONDII	CA	1965-66	17.28	21.3838	8.93721	15.16051
42862	ESCONDII	CA	1966-67	19.19	21.3838	8.93721	15.16051
42862	ESCONDII	CA	1967-68	12.1	21.3838	8.93721	15.16051
42862	ESCONDII	CA	1968-69	18.73	21.3838	8.93721	15.16051
42862	ESCONDII	CA	1969-70	7.68	21.3838	8.93721	15.16051
42862	ESCONDII	CA	1970-71	11.28	21.3838	8.93721	15.16051
42862	ESCONDII	CA	1971-72	8.66	21.3838	8.93721	15.16051
42862	ESCONDII	CA	1972-73	16.99	21.3838	8.93721	15.16051
42862	ESCONDII	CA	1973-74	10.33	21.3838	8.93721	15.16051
42862	ESCONDII	CA	1974-75	14.59	21.3838	8.93721	15.16051
42862	ESCONDII	CA	1975-76	14.19	21.3838	8.93721	15.16051
42862	ESCONDII	CA	1976-77	13.41	21.3838	8.93721	15.16051
42862	ESCONDII	CA	1977-78	29.92	21.3838	8.93721	15.16051
42862	ESCONDII	CA	1978-79	24.68511	21.3838	8.93721	15.16051
42863	ESCONDII	CA	1979-80	30.36	21.3838	8.93721	15.16051
42863	ESCONDII	CA	1980-81	10.96	21.3838	8.93721	15.16051
42863	ESCONDII	CA	1981-82	16.51	21.3838	8.93721	15.16051
42863	ESCONDII	CA	1982-83	24.15	21.3838	8.93721	15.16051
42863	ESCONDII	CA	1983-84	8.983804	21.3838	8.93721	15.16051
42863	ESCONDII	CA	1984-85	13.51	21.3838	8.93721	15.16051
42863	ESCONDII	CA	1985-86	21.34	21.3838	8.93721	15.16051



42863	ESCONDII CA	1986-87	12.65	21.3838	8.93721	15.16051
42863	ESCONDII CA	1987-88	16.3	21.3838	8.93721	15.16051
42863	ESCONDII CA	1988-89	8.47	21.3838	8.93721	15.16051
42863	ESCONDII CA	1989-90	9.71	21.3838	8.93721	15.16051
42863	ESCONDII CA	1990-91	15.43	21.3838	8.93721	15.16051
42863	ESCONDII CA	1991-92	13.925	21.3838	8.93721	15.16051
42863	ESCONDII CA	1992-93	29.05	21.3838	8.93721	15.16051
42863	ESCONDII CA	1993-94	14.82	21.3838	8.93721	15.16051
42863	ESCONDII CA	1994-95	25.26	21.3838	8.93721	15.16051
42863	ESCONDII CA	1995-96	9.93	21.3838	8.93721	15.16051
42863	ESCONDII CA	1996-97	12.81	21.3838	8.93721	15.16051
42863	ESCONDII CA	1997-98		21.3838	8.93721	15.16051
		1998-99		21.3838	8.93721	15.16051
		1999-00		21.3838	8.93721	15.16051
		2000-01		21.3838	8.93721	15.16051

COMBINED PRECIPITATION RECORDS



42862 ESCONDII CA	1978-79	0	3.74	3.07	
47731 SAN CLENDAM CA	1978-79	0	2.51	1.41	5.72
	OCT	NOV	DEC	JAN	

1.49004	2.177305	10.48861
		1.833672

SC DAM	1983-84	0.41	4.46	7.69	0.12
046377 OCEANSII CA	1983-84	1.36	1.91	2.3	0.16
42863 ESCONDII CA	1983-84	1.11	2.65	3.29	0.19
		0.25	-0.74	-0.99	-0.03

Use this nu

SC DAM	1991-92	1.03	0.37	4.36	2.69
046377 OCEANSII CA	1991-92	0.25	0	1.73	2.34
42863 ESCONDII CA	1991-92	0.62	0	2.26	9999
					2.515

2.78	3.99	9999	9999	9999	9999	9999	9999	
4.32	4.35	0.38	0.26	0	0.12	0.03	0	19.1
FEB	MAR	APR	MAY	JUN	JUL	AUG	SEP	

0.643519	0.917241	0.296544	0.202899		0.093646	0.023411	
		0.78038					

1.63	0.81	0.52	0	0.03	0	0	0
0.23	0	0.91	0	0.09	0	0	0.12
9999	0.11	0.76	9999	0	0.08	0.12	0.03

0.31911			
0.968498			
0.643804		0	

9.04	2.76	0.01	0	0	0	0	0
3.94	3.24	0	0	0	0.02	0.2	0
4.28	3.53	0.17	0.29	0	0.07	0.19	0

COMBINED DATA SET

NUMBER	STATION	STATE	WATER YEAR	OCT	NOV	DEC	JAN	FEB
42862	ESCONDIDO	CA	1940-41	1.49	0.58	8.51	2.06	5.47
42862	ESCONDIDO	CA	1941-42	3.21	2.77	5.27	0.69	2.49
42862	ESCONDIDO	CA	1942-43	0.36	0.15	1.22	6.66	1.95
42862	ESCONDIDO	CA	1943-44	0.23	0.02	7.24	1.71	4.41
42862	ESCONDIDO	CA	1944-45	0.04	5.18	1.56	0.13	2.91
42862	ESCONDIDO	CA	1945-46	0.02	0.6	5.24	0.61	1.12
42862	ESCONDIDO	CA	1946-47	1.1	4.75	1.64	0.52	0.47
42862	ESCONDIDO	CA	1947-48	0.6	0.85	2.43	0	1.71
42862	ESCONDIDO	CA	1948-49	1.25	0	3.05	5.07	2.05
42862	ESCONDIDO	CA	1949-50	0.21	1.9	1.55	3.66	1.66
42862	ESCONDIDO	CA	1950-51	0.04	2.01	0.06	3.18	1.2
42862	ESCONDIDO	CA	1951-52	0.95	1.41	6.62	6.1	0.57
42862	ESCONDIDO	CA	1952-53	0	3.24	3.03	1.66	0.75
42862	ESCONDIDO	CA	1953-54	0.04	1.22	0.27	4.87	2.71
42862	ESCONDIDO	CA	1954-55	0	0.98	1.05	4.38	0.93
42862	ESCONDIDO	CA	1955-56	0	1.36	0.94	4.6	0.62
42862	ESCONDIDO	CA	1956-57	0.19	0	0.415	7.82	0.6
42862	ESCONDIDO	CA	1957-58	1.95	1.47	1.61	1.02	4.73
42862	ESCONDIDO	CA	1958-59	0.28	0.2	0.19	0.57	4.62
42862	ESCONDIDO	CA	1959-60	1.1	0	3.2	3.86	3.47
42862	ESCONDIDO	CA	1960-61	0.04	2.53	0.13	1.3	0.08
42862	ESCONDIDO	CA	1961-62	0.07	1.57	1.98	3.77	6.67
42862	ESCONDIDO	CA	1962-63	0.06	0.01	0.15	0.22	3.51
42862	ESCONDIDO	CA	1963-64	0.39	2.56	0.11	1.76	0.54
42862	ESCONDIDO	CA	1964-65	0.31	1.65	1.25	0.51	1.39
42862	ESCONDIDO	CA	1965-66	0.03	8.18	5.77	1	1.56
42862	ESCONDIDO	CA	1966-67	0.77	1.27	7.65	2.54	0.01
42862	ESCONDIDO	CA	1967-68	0	4.61	3.2	0.53	0.45
42862	ESCONDIDO	CA	1968-69	0.16	0.47	1.23	7.23	6.43
42862	ESCONDIDO	CA	1969-70	0.07	1.31	0.31	1.02	1.21
42862	ESCONDIDO	CA	1970-71	0.35	2.47	3.12	0.95	0.94
42862	ESCONDIDO	CA	1971-72	1.09	0.48	4.91	0	0.3
42862	ESCONDIDO	CA	1972-73	0.87	2.89	2.15	2.92	2.9
42862	ESCONDIDO	CA	1973-74	0	1.95	0.27	4.48	0.08
42862	ESCONDIDO	CA	1974-75	1.52	0.21	2.4	0.34	1.94
42862	ESCONDIDO	CA	1975-76	0.14	1.24	0.63	0	5.71
42862	ESCONDIDO	CA	1976-77	0.7	1.61	1.24	2.7	0.45
42862	ESCONDIDO	CA	1977-78	0.1	0.28	2.52	11.09	5.73
42862	ESCONDIDO	CA	1978-79	0	3.74	3.07	10.49	2.78
42863	ESCONDIDO NO 2	CA	1979-80	1.26	0.37	0.36	11.49	10.11
42863	ESCONDIDO NO 2	CA	1980-81	0.08	0	0.97	1.38	3.1
42863	ESCONDIDO NO 2	CA	1981-82	0.39	1.42	0.96	4.03	1.64
42863	ESCONDIDO NO 2	CA	1982-83	0.16	3.92	2.09	2.28	4.49
42863	ESCONDIDO NO 2	CA	1983-84	1.11	2.65	3.29	0.19	0.64
42863	ESCONDIDO NO 2	CA	1984-85	0.31	2.06	6.35	1.02	1.57
42863	ESCONDIDO NO 2	CA	1985-86	0.08	6.4	0.62	1.19	6.65

42863	ESCONDIDO NO 2	CA	1986-87	1.99	1.5	0.87	2.6	1.93
42863	ESCONDIDO NO 2	CA	1987-88	3.19	1.88	3.38	2.08	1.1
42863	ESCONDIDO NO 2	CA	1988-89	0	1.55	2.79	0.61	1.61
42863	ESCONDIDO NO 2	CA	1989-90	0.45	0.18	0.01	3.72	1.54
42863	ESCONDIDO NO 2	CA	1990-91	0.09	0.95	0.5	1.01	2.35
42863	ESCONDIDO NO 2	CA	1991-92	0.62	0	2.26	2.52	4.28
42863	ESCONDIDO NO 2	CA	1992-93	0.66	0.1	4.7	16.1	5.8
42863	ESCONDIDO NO 2	CA	1993-94	0.09	1.1	0.64	1.22	4.91
42863	ESCONDIDO NO 2	CA	1994-95	0	0.61	1.05	9.47	1.84
42863	ESCONDIDO NO 2	CA	1995-96	0	0.13	1.17	2.3	4.08
42863	ESCONDIDO NO 2	CA	1996-97	0.6	0.71	2.53	6.07	0.8
42863	ESCONDIDO NO 2	CA	1997-98	0.01	2.88	1.86		
			1998-99					
			1999-00					
			2000-01					

Average	0.531379	1.657414	2.30319	3.18059	2.553751
Minimum	0	0	0.01	0	0.01
Maximum	3.21	8.18	8.51	16.1	10.11
Standard E	0.72502	1.684161	2.110869	3.380529	2.152414

ABOVE A\	1.256399	3.341575	4.414058	6.561119	4.706165
BELOW A\	-0.19364	-0.02675	0.192321	-0.19994	0.401337

1940-41	AA	A	AA	A	AA
1941-42	AA	A	AA	A	A
1942-43	A	A	A	AA	A
1943-44	A	A	AA	A	A
1944-45	A	AA	A	A	A
1945-46	A	A	AA	A	A
1946-47	A	AA	A	A	A
1947-48	A	A	A	A	A
1948-49	A	A	A	A	A
1949-50	A	A	A	A	A
1950-51	A	A	BA	A	A
1951-52	A	A	AA	A	A
1952-53	A	A	A	A	A
1953-54	A	A	A	A	A
1954-55	A	A	A	A	A
1955-56	A	A	A	A	A
1956-57	A	A	A	AA	A
1957-58	AA	A	A	A	AA
1958-59	A	A	BA	A	A
1959-60	A	A	A	A	A
1960-61	A	A	BA	A	BA
1961-62	A	A	A	A	AA
1962-63	A	A	BA	A	A
1963-64	A	A	BA	A	A
1964-65	A	A	A	A	A
1965-66	A	AA	AA	A	A
1966-67	A	A	AA	A	BA

1967-68	A	AA	A	A	A
1968-69	A	A	A	AA	AA
1969-70	A	A	A	A	A
1970-71	A	A	A	A	A
1971-72	A	A	AA	A	BA
1972-73	A	A	A	A	A
1973-74	A	A	A	A	BA
1974-75	AA	A	A	A	A
1975-76	A	A	A	A	AA
1976-77	A	A	A	A	A
1977-78	A	A	A	AA	AA
1978-79	A	AA	A	AA	A
1979-80	AA	A	A	AA	AA
1980-81	A	A	A	A	A
1981-82	A	A	A	A	A
1982-83	A	AA	A	A	A
1983-84	A	A	A	A	A
1984-85	A	A	AA	A	A
1985-86	A	AA	A	A	AA
1986-87	AA	A	A	A	A
1987-88	AA	A	A	A	A
1988-89	A	A	A	A	A
1989-90	A	A	BA	A	A
1990-91	A	A	A	A	A
1991-92	A	A	A	A	A
1992-93	A	A	AA	AA	AA
1993-94	A	A	A	A	AA
1994-95	A	A	A	AA	A
1995-96	A	A	A	A	A
1996-97	A	A	A	A	A
1997-98	A	A	A	A	BA
1998-99					
1999-00					
2000-01					

MAR	APR	MAY	JUN	JUL	AUG	SEP	TOTAL
8.09	5.32	0.08	0.01	0.08	0.09	0.19	31.97 Above Average
1.68	2.24	0	0	0	0.3	0	18.65 Average
3.62	1.9	0.14	0.07	0	0	0.08	16.15 Average
1.32	0.97	0.18	0.37	0	0	0.04	16.49 Average
5.01	0.14	0.13	0.1	0	2.2	0.11	17.51 Average
3.01	0.76	0.12	0	0	0	0.03	11.51 Average
2.49	0.66	0.06	0	0	0	0.12	11.81 Average
2.06	0.81	0	0.39	0	0	0	8.85 Below Average
1.68	0.11	0.99	0	0	0	0	14.2 Average
1.21	0.53	0.3	0.07	0	0	0.14	11.23 Average
0.65	2.49	0.07	0	0.05	0.89	0.22	10.86 Average
6.43	1.83	0	0.05	0	0	0.07	24.03 Above Average
1.46	1.37	0.31	0.04	0	0	0	11.86 Average
5.19	0.23	0.06	0.12	0	0	0	14.71 Average
0.65	0.57	1.58	0	0	0.06	0	10.2 Average
0	1.45	0.14	0	0	0	0	9.11 Average
1.48	1.21	1.44	0.42	0	0	0	13.58 Average
7.57	3.96	0.25	0	0	0	0.46	23.02 Above Average
0	0.54	0.06	0	0	0	0.08	6.54 Below Average
1.1	1.09	0.22	0.02	0	0	0.01	14.07 Average
1.9	0.03	0.08	0.01	0	0.04	0.01	6.15 Below Average
1.71	0	1.02	0.2	0	0	0	16.99 Average
1.57	1.75	0.06	0.08	0	0	2.05	9.46 Average
2.24	0.84	0.39	0.07	0	0	0.29	9.19 Average
1.94	4.68	0.09	0.07	0.57	0	0.35	12.81 Average
0.45	0.06	0.07	0	0	0	0.16	17.28 Average
1.83	3.78	0.07	0.26	0.09	0.42	0.5	19.19 Average
2.14	0.84	0.25	0.02	0.06	0	0	12.1 Average
1.91	0.52	0.25	0.25	0.03	0.15	0.1	18.73 Average
3.47	0.22	0.03	0.04	0	0	0	7.68 Below Average
0.35	1.11	1.91	0.06	0	0	0.02	11.28 Average
0	0.19	0.76	0.51	0	0	0.42	8.66 Below Average
4.82	0.36	0.05	0.01	0	0	0.02	16.99 Average
2.78	0.7	0.06	0.01	0	0	0	10.33 Average
4.44	3.45	0.13	0.1	0	0	0.06	14.59 Average
2.1	1.79	0.04	0.03	0	0	2.51	14.19 Average
1.65	0.09	2.8	0.04	0	2.13	0	13.41 Average
8.35	1.03	0.11	0	0	0	0.71	29.92 Above Average
3.99	0.30	0.20	0	0.09	0.02	0	24.69 Above Average
5.46	1	0.31	0	0	0	0	30.36 Above Average
4.53	0.63	0.18	0.09	0	0	0	10.96 Average
6.1	0.82	0.26	0.12	0	0.01	0.76	16.51 Average
7.91	2.59	0.34	0.08	0	0.24	0.05	24.15 Above Average
0.11	0.76	0	0	0.08	0.12	0.03	8.98 Average
1.26	0.25	0	0.09	0.08	0	0.52	13.51 Average
4.41	0.94	0	0	0	0	1.05	21.34 Average

2.46	0.44	0.14	0	0.13	0.07	0.52	12.65 Average
0.64	3.8	0.23	0	0	0	0	16.3 Average
1.41	0.09	0.06	0.03	0	0	0.32	8.47 Below Average
0.58	1.24	0.81	0.98	0.1	0.1	0	9.71 Average
9.97	0.17		0	0.38	0.01		15.43
3.53	0.17	0.29	0	0.07	0.19	0	13.93 Average
1.18	0	0.02	0.49	0	0	0	29.05 Above Average
3.72	2.29	0.11	0	0.74	0	0	14.82 Average
8.81	1.84	0.67	0.97	0	0	0	25.26 Above Average
1.53	0.6	0.03	0	0.09	0	0	9.93 Average
0	0	0.04	0	0.06	0	2	12.81 Average

2.911404	1.185027	0.321302	0.11	0.047432	0.123569	0.25	15.160507
0	0	0	0	0	0	0	6.15
9.97	5.32	2.8	0.98	0.74	2.2	2.51	31.97
2.510653	1.246473	0.526959	0.209532	0.131965	0.416718	0.519948	6.2232971

5.422056	2.4315	0.848261	0.319532	0.179398	0.540286	0.769948	21.383804
0.400751	-0.06145	-0.20566	-0.09953	-0.08453	-0.29315	-0.26995	8.9372101

AA	AA	A	A	A	A	A
A	A	A	A	A	A	A
A	A	A	A	A	A	A
A	A	A	AA	A	A	A
A	A	A	A	A	AA	A
A	A	A	A	A	A	A
A	A	A	A	A	A	A
A	A	A	AA	A	A	A
A	A	AA	A	A	A	A
A	A	A	A	A	A	A
A	AA	A	A	A	AA	A
AA	A	A	A	A	A	A
A	A	A	A	A	A	A
A	A	A	A	A	A	A
A	A	AA	A	A	A	A
A	A	AA	AA	A	A	A
AA	AA	A	A	A	A	A
BA	A	A	A	A	A	A
A	A	AA	AA	A	A	A
AA	AA	A	A	A	A	A
BA	A	A	A	A	A	A
A	A	A	A	A	A	A
A	A	A	A	A	A	A
A	A	AA	A	A	A	A
A	A	A	A	A	A	AA
A	A	A	A	A	A	A
A	AA	A	A	AA	A	A
A	A	A	A	A	A	A
A	AA	A	A	A	A	A

A	A	A	A	A	A	A
A	A	A	A	A	A	A
A	A	A	A	A	A	A
BA	A	AA	A	A	A	A
BA	A	A	AA	A	A	A
A	A	A	A	A	A	A
A	A	A	A	A	A	A
A	AA	A	A	A	A	A
A	A	A	A	A	A	AA
A	A	AA	A	A	AA	A
AA	A	A	A	A	A	A
A	A	A	A	A	A	A
AA	A	A	A	A	A	A
A	A	A	A	A	A	A
AA	A	A	A	A	A	A
AA	AA	A	A	A	A	A
BA	A	A	A	A	A	A
A	A	A	A	A	A	A
A	A	A	A	A	A	AA
A	A	A	A	A	A	A
A	AA	A	A	A	A	A
A	A	A	A	A	A	A
A	A	A	AA	A	A	A
AA	A	A	A	AA	A	A
A	A	A	A	A	A	A
A	A	A	AA	A	A	A
A	A	A	A	AA	A	A
AA	A	A	AA	A	A	A
A	A	A	A	A	A	A
BA	A	A	A	A	A	AA
BA	A	A	A	A	A	A