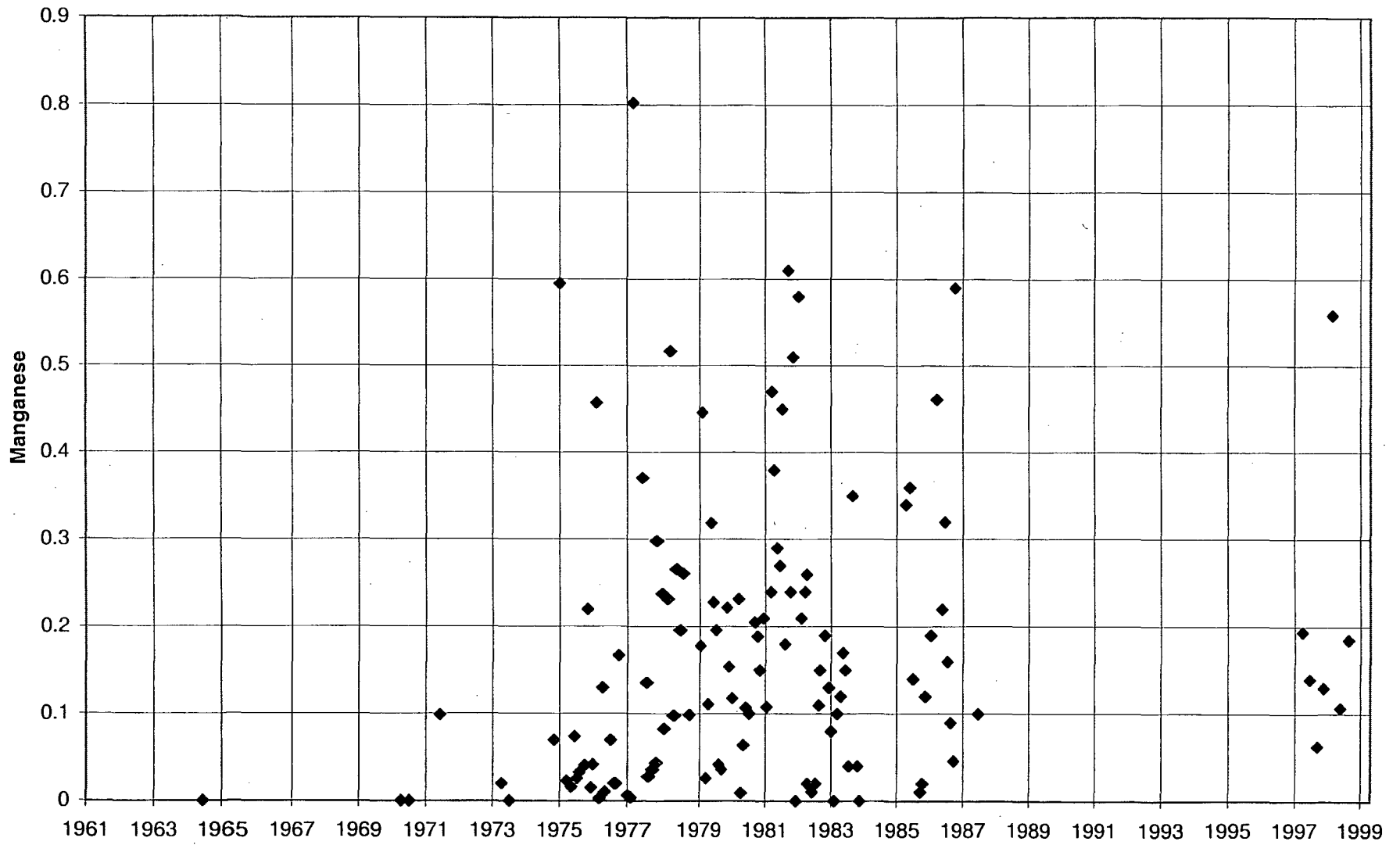
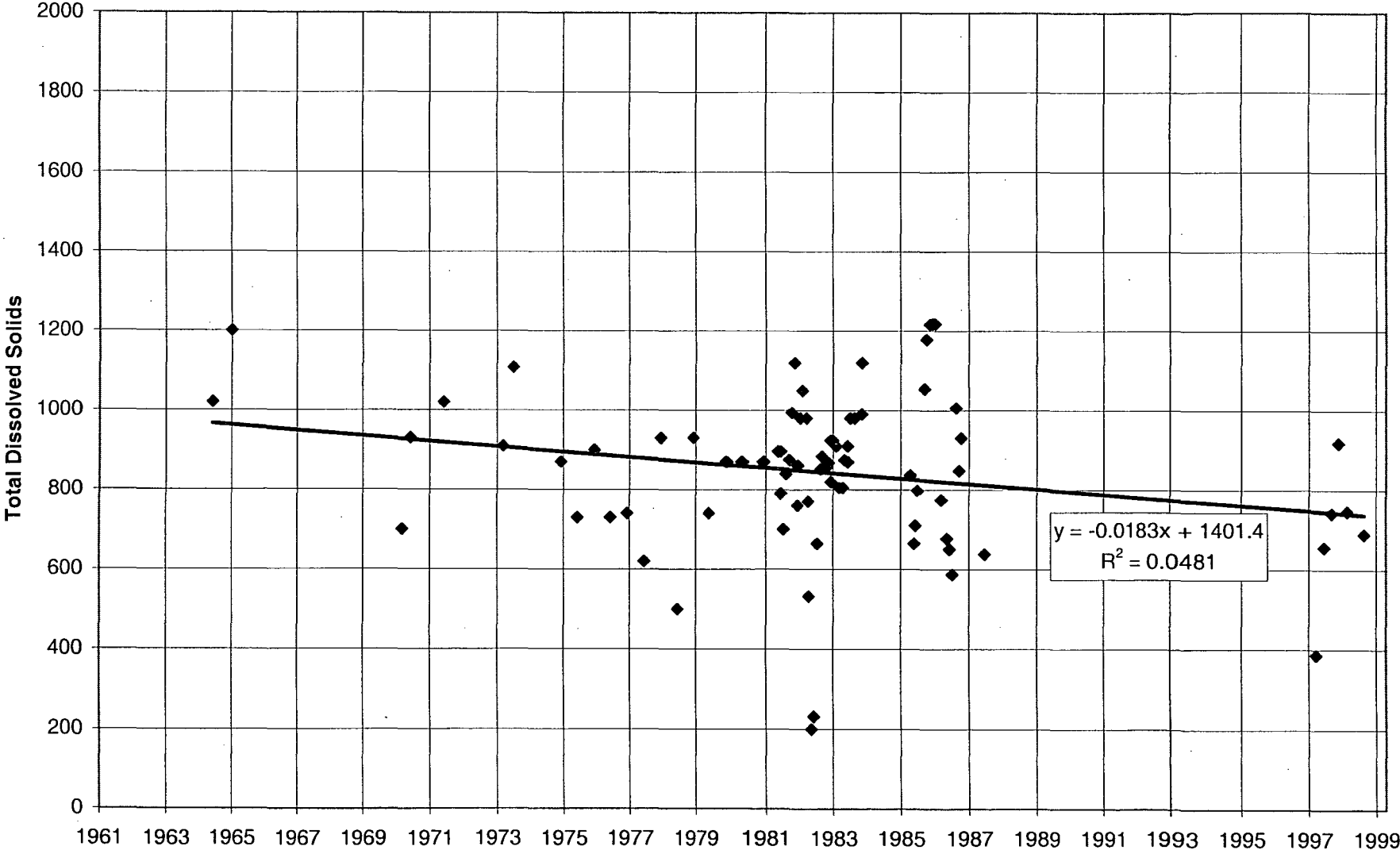


Map ID	Waterbody	HAS	Sample Location Description	Location ID	Latitude	Longitude	Name	Parameter		Std. Ref	Type	Samples Dates	No. Taken	Exceedance		Reference
								Std.	Unit					No.	%	
13	Fallbrook Creek	902.13	Fallbrook Creek near Fallbrook on Camp Pendleton property (0.75 mi us from Oneill Lake)	USGS 11045300	332049	1171901	Conductivity	900	mg/L	Secondary MCL	water chemistry	12/8/97, 3/3/98, 5/26/98, 8/4/98, 11/8/98, 2/10/99, 5/11/99, 8/28/99, 12/6/99, 3/7/00, 6/2/00	11	8	73%	Final Report of Water Quality Studies & Proposed Watershed Monitoring Program for portions of San Mateo & Santa Margarita River Watershed. Marine Corps Base, Camp Pendleton, CA. Contract No. N88711-95-D-7573, D.O. 0021.
13	Fallbrook Creek	902.13	Fallbrook Creek near Fallbrook on Camp Pendleton property (0.75 mi us from Oneill Lake)	USGS 11045300	332049	1171901	TDS	750	mg/L	Basin Plan	water chemistry	12/8/97, 3/3/98, 5/26/98, 8/4/98, 11/8/98, 2/10/99, 5/11/99, 8/28/99, 12/6/99, 3/7/00, 6/2/00	11	3	27%	Final Report of Water Quality Studies & Proposed Watershed Monitoring Program for portions of San Mateo & Santa Margarita River Watershed. Marine Corps Base, Camp Pendleton, CA. Contract No. N88711-95-D-7573, D.O. 0021.
13	Fallbrook Creek	902.13	Fallbrook Creek near Fallbrook on Camp Pendleton property (0.75 mi us from Oneill Lake)	USGS 11045300	332049	1171901	Fe	0.3	mg/L	MCL	water chemistry	12/8/97, 3/3/98, 5/26/98, 8/4/98, 11/8/98, 2/10/99, 5/11/99, 8/28/99, 12/6/99, 3/7/00, 6/2/00	11	6	45%	Final Report of Water Quality Studies & Proposed Watershed Monitoring Program for portions of San Mateo & Santa Margarita River Watershed. Marine Corps Base, Camp Pendleton, CA. Contract No. N88711-95-D-7573, D.O. 0021.
13	Fallbrook Creek	902.13	Fallbrook Creek near Fallbrook on Camp Pendleton property (0.75 mi us from Oneill Lake)	USGS 11045300	332049	1171901	Pb	0.015	mg/L	MCL	water chemistry	12/8/97, 3/3/98, 5/26/98, 8/4/98, 11/8/98, 2/10/99, 5/11/99, 8/28/99, 12/6/99, 3/7/00, 6/2/00	11	1	9%	Final Report of Water Quality Studies & Proposed Watershed Monitoring Program for portions of San Mateo & Santa Margarita River Watershed. Marine Corps Base, Camp Pendleton, CA. Contract No. N88711-95-D-7573, D.O. 0021.
13	Fallbrook Creek	902.13	Fallbrook Creek near Fallbrook on Camp Pendleton property (0.75 mi us from Oneill Lake)	USGS 11045300	332049	1171901	Mn	0.05	mg/L	Secondary MCL	water chemistry	12/8/97, 3/3/98, 5/26/98, 8/4/98, 11/8/98, 2/10/99, 5/11/99, 8/28/99, 12/6/99, 3/7/00, 6/2/00	11	10	81%	Final Report of Water Quality Studies & Proposed Watershed Monitoring Program for portions of San Mateo & Santa Margarita River Watershed. Marine Corps Base, Camp Pendleton, CA. Contract No. N88711-95-D-7573, D.O. 0021.
13	Fallbrook Creek	902.13	Fallbrook Creek near Fallbrook on Camp Pendleton property (0.75 mi us from Oneill Lake)	USGS 11045300	332049	1171901	total phosphorous	0.1	mg/L	Secondary MCL	water chemistry	12/8/97, 3/3/98, 5/26/98, 8/4/98, 11/8/98, 2/10/99, 5/11/99, 8/28/99, 12/6/99, 3/7/00, 6/2/00	7	7	100%	Final Report of Water Quality Studies & Proposed Watershed Monitoring Program for portions of San Mateo & Santa Margarita River Watershed. Marine Corps Base, Camp Pendleton, CA. Contract No. N88711-95-D-7573, D.O. 0021.
13	Fallbrook Creek	902.13	Fallbrook Creek near Fallbrook on Camp Pendleton property (0.75 mi us from Oneill Lake)	USGS 11045300	332049	1171901	Sulfates	250	mg/L	Secondary MCL	water chemistry	12/8/97, 3/3/98, 5/26/98, 8/4/98, 11/8/98, 2/10/99, 5/11/99, 8/28/99, 12/6/99, 3/7/00, 6/2/00	11	1	9%	Final Report of Water Quality Studies & Proposed Watershed Monitoring Program for portions of San Mateo & Santa Margarita River Watershed. Marine Corps Base, Camp Pendleton, CA. Contract No. N88711-95-D-7573, D.O. 0021.

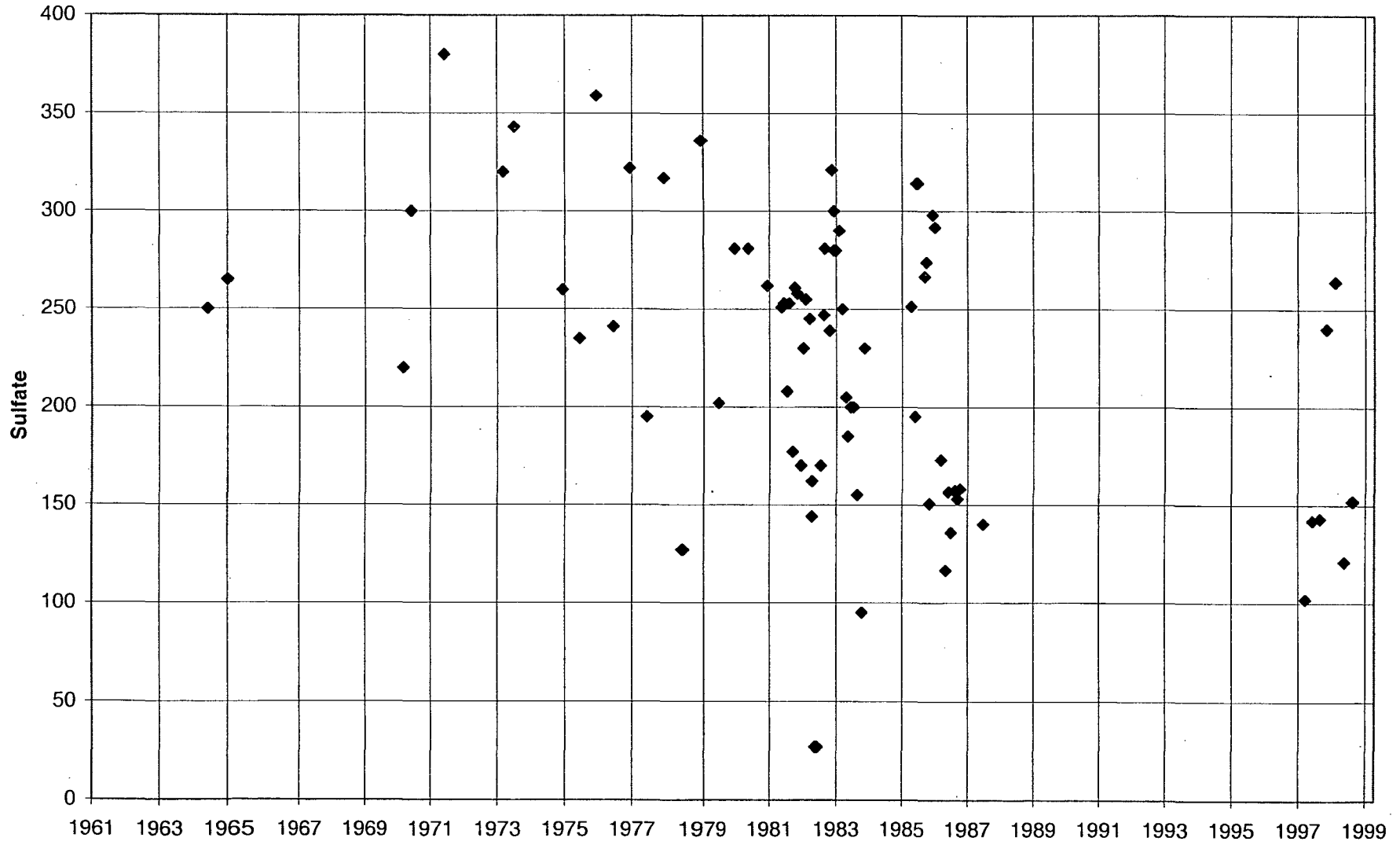
# Fallbrook Creek near Fallbrook



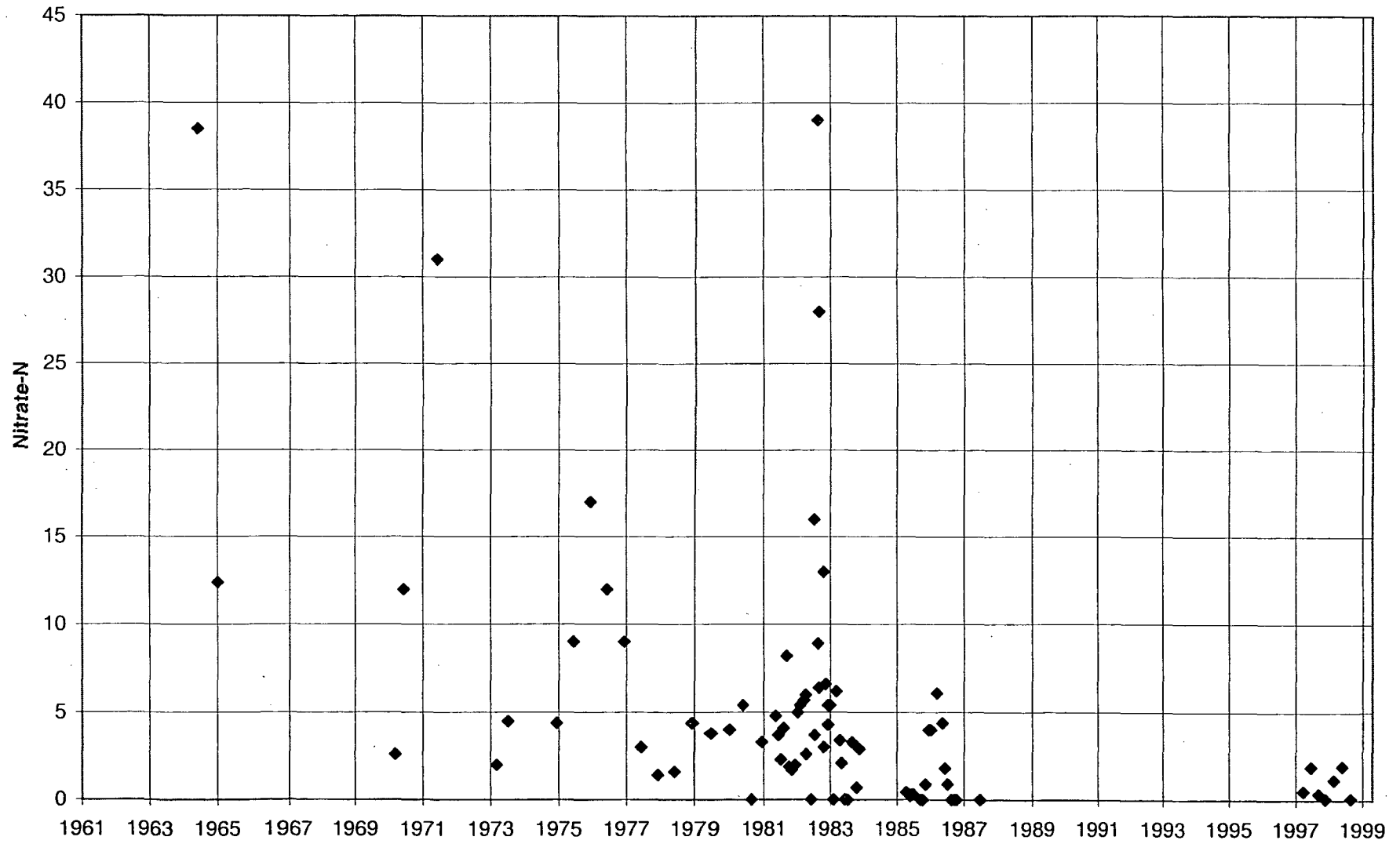
### Fallbrook Creek near Fallbrook



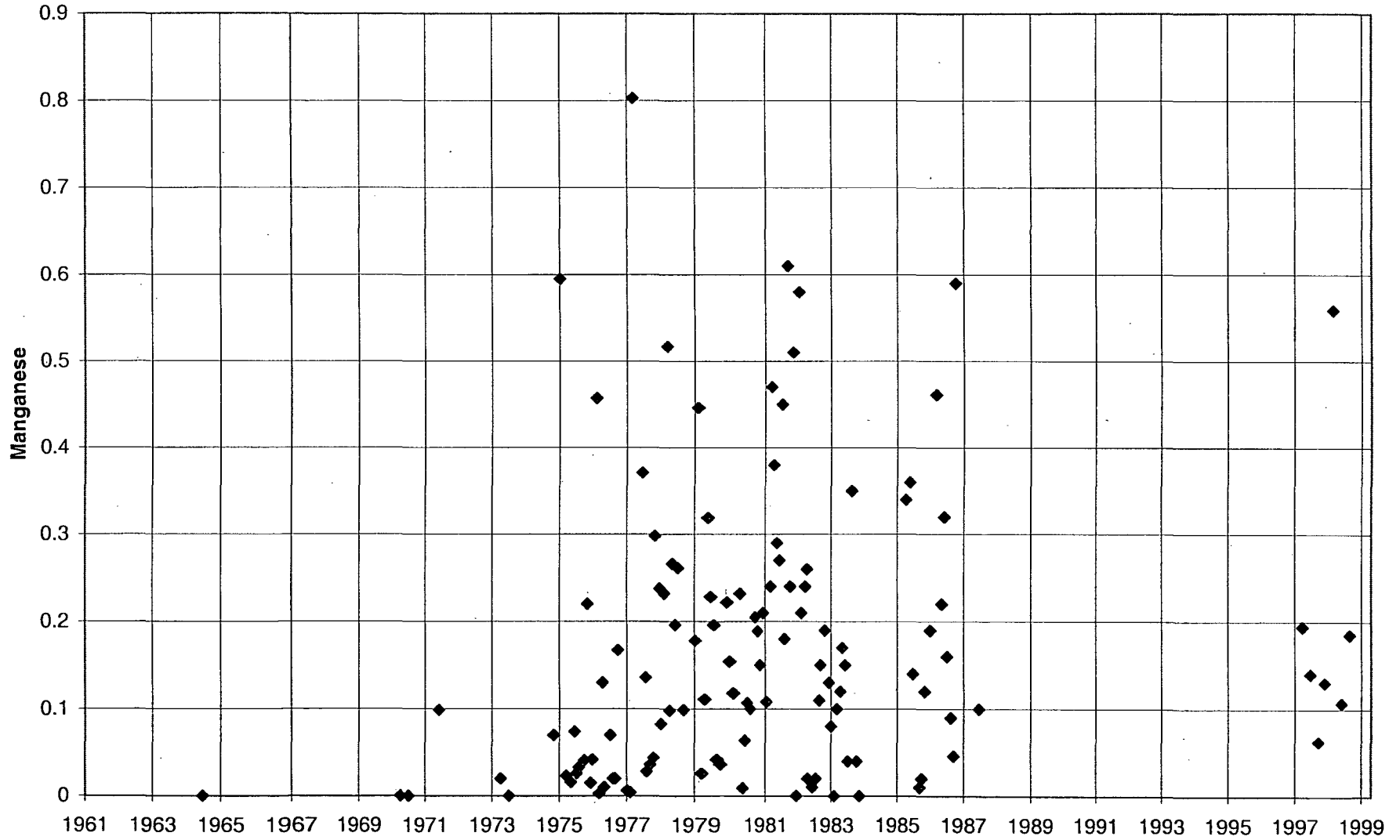
### Fallbrook Creek near Fallbrook



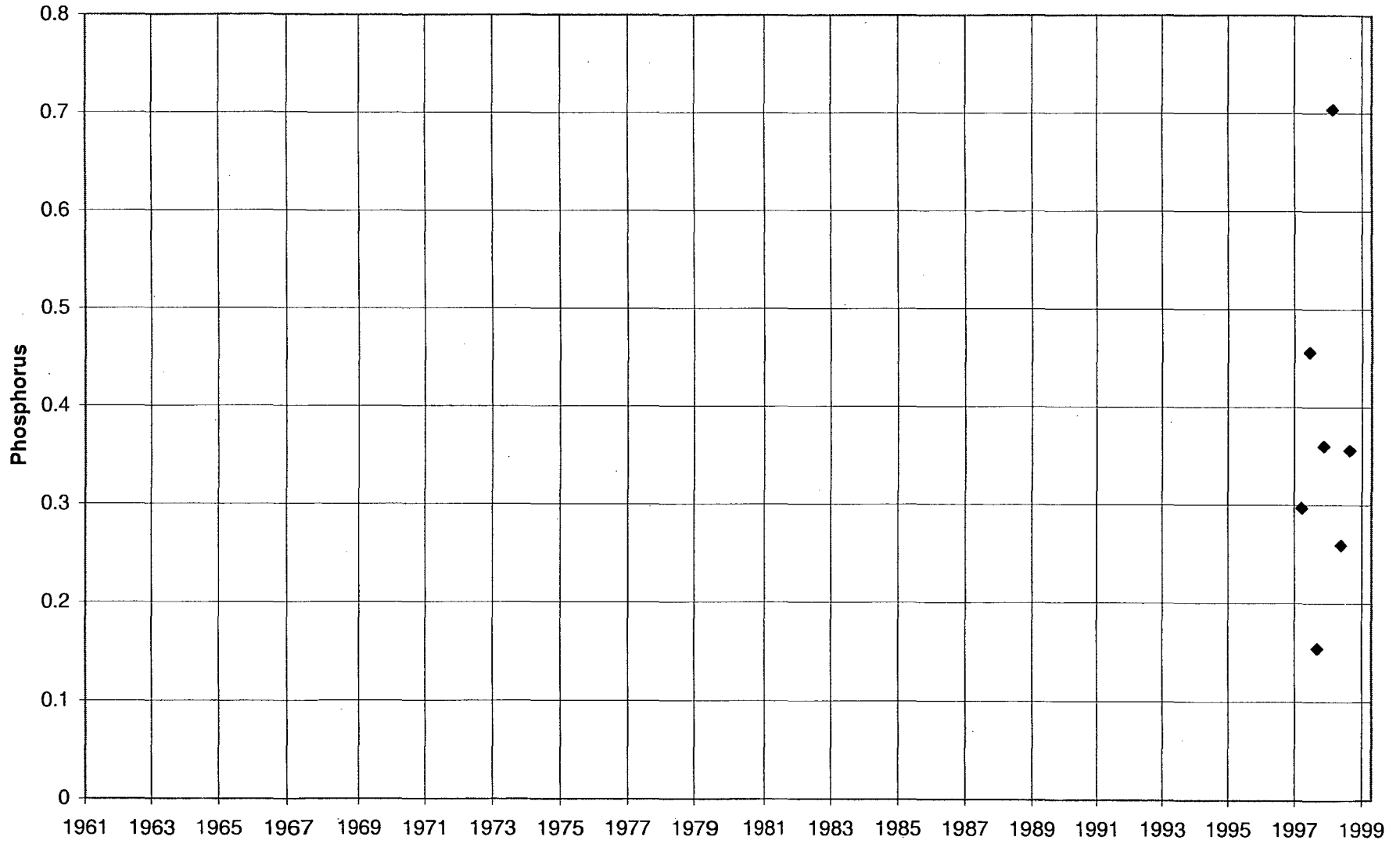
### Fallbrook Creek near Fallbrook



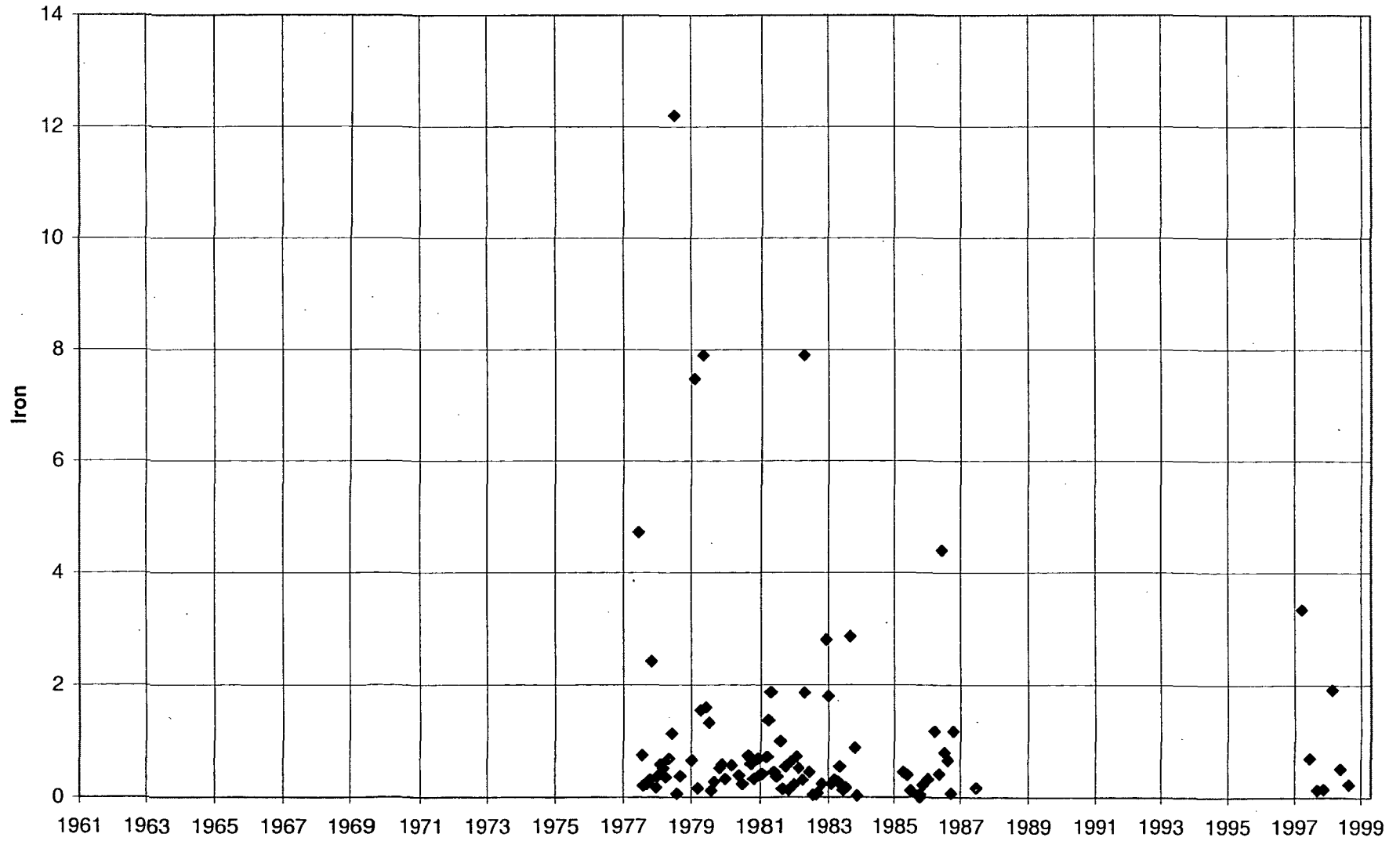
### Fallbrook Creek near Fallbrook



### Fallbrook Creek near Fallbrook



### Fallbrook Creek near Fallbrook





fIdRound	fIdWell	fIdMatrix	fIdNewName	fIdWell7	fIdUnits	fIdDL	fIdSampleDate	fIdSampleMont
11	07	surface water	Zinc	ND	mg/L	0.01	6/1/00	6
02	07	surface water	Zinc	ND	mg/L	0.03	3/3/98	3
08	07	surface water	Zinc	ND	mg/L	0.03	9/28/99	9
09	07	surface water	Zinc	ND	mg/L	0.03	12/6/99	12
06	07	surface water	Zinc	NS	mg/L	0.01	2/10/99	2
03	07	surface water	Zinc	ND	mg/L	0.01	5/26/98	5
01	07	surface water	Zinc	0.033	mg/L	0.0100	12/9/97	12
10	07	surface water	Zinc	0.012J	mg/L	0.01	3/7/00	3
07	07	surface water	Zinc	ND	mg/L	0.02	5/11/99	5
05	07	surface water	Zinc	0.0148	mg/L	0.01	11/9/98	11
04	07	surface water	Zinc	ND	mg/L	0.01	8/4/98	8
10	07	surface water	Total Organic Carbon	9.8	mg/L	0.1	3/7/00	3
11	07	surface water	Total Organic Carbon	19	mg/L	0.5	6/1/00	6
07	07	surface water	Total Organic Carbon	14	mg/L	1	5/11/99	5
01	07	surface water	Total Organic Carbon	10.6	mg/L	1.00	12/9/97	12
09	07	surface water	Total Organic Carbon	13.3	mg/L	0.5	12/6/99	12
06	07	surface water	Total Organic Carbon	8.37	mg/L	1	2/10/99	2
05	07	surface water	Total Organic Carbon	15.8	mg/L	1	11/9/98	11
03	07	surface water	Total Organic Carbon	10.2	mg/L	1	5/26/98	5
02	07	surface water	Total Organic Carbon	13.7	mg/L	1	3/3/98	3
04	07	surface water	Total Organic Carbon	7.54	mg/L	1	8/4/98	8
08	07	surface water	Total Organic Carbon	4.6	mg/L	0.5	9/28/99	9
09	07	surface water	Total Dissolved Solids	889	mg/L	10	12/6/99	12
05	07	surface water	Total Dissolved Solids	746	mg/L	10	11/9/98	11
03	07	surface water	Total Dissolved Solids	741	mg/L	10	5/26/98	5
04	07	surface water	Total Dissolved Solids	918	mg/L	10	8/4/98	8
01	07	surface water	Total Dissolved Solids	387	mg/L	10.0	12/9/97	12
07	07	surface water	Total Dissolved Solids	689	mg/L	10	5/11/99	5
06	07	surface water	Total Dissolved Solids	536	mg/L	10	2/10/99	2
08	07	surface water	Total Dissolved Solids	880	mg/L	10	9/28/99	9
11	07	surface water	Total Dissolved Solids	864	mg/L	5	6/1/00	6
10	07	surface water	Total Dissolved Solids	340	mg/L	5	3/7/00	3
02	07	surface water	Total Dissolved Solids	655	mg/L	10	3/3/98	3
06	07	surface water	Total Coliform	900	mpn/100ml	2	2/10/99	2
08	07	surface water	Total Coliform	1600	mpn/100ml	2	9/28/99	9
04	07	surface water	Total Coliform	1600	mpn/100ml	2	8/4/98	8
05	07	surface water	Total Coliform	>1600	mpn/100ml	2	11/9/98	11
02	07	surface water	Total Coliform	1600	mpn/100ml	2	3/3/98	3

fIdRound	fIdWell	fIdMatrix	fIdNewName	fIdWell7	fIdUnits	fIdDL	fIdSampleDate	fIdSampleMont
07	07	surface water	Total Coliform	>23	mpn/100ml	2	5/11/99	5
01	07	surface water	Total Coliform	>1600	mpn/100ml	2	12/9/97	12
09	07	surface water	Total Coliform	500	mpn/100ml	2	12/6/99	12
03	07	surface water	Total Coliform	>1600	mpn/100ml	2	5/26/98	5
10	07	surface water	Total Coliform	>1,600	MPN/100 m	3.0	3/7/00	3
11	07	surface water	Total Coliform	>1,600	MPN/100 m	2	6/1/00	6
05	07	surface water	Surfactants (MBAS)	0.135	mg/L	0.1	11/9/98	11
07	07	surface water	Surfactants (MBAS)	0.165	mg/L	0.1	5/11/99	5
02	07	surface water	Surfactants (MBAS)	0.126	mg/L	0.1	3/3/98	3
03	07	surface water	Surfactants (MBAS)	ND	mg/L	0.1	5/26/98	5
04	07	surface water	Surfactants (MBAS)	ND	mg/L	0.1	8/4/98	8
01	07	surface water	Surfactants (MBAS)	ND	mg/L	0.100	12/9/97	12
06	07	surface water	Surfactants (MBAS)	NS	mg/L	0.1	2/10/99	2
09	07	surface water	Surfactants (MBAS)	ND	mg/L	0.05	12/6/99	12
08	07	surface water	Surfactants (MBAS)	ND	mg/L	0.05	9/28/99	9
11	07	surface water	Surfactants (MBAS)	ND	mg/L	0.03	6/1/00	6
10	07	surface water	Surfactants (MBAS)	0.08	mg/L	0.03	3/7/00	3
04	07	surface water	Sulfate	240	mg/L	50	8/4/98	8
05	07	surface water	Sulfate	264	mg/L	5	11/9/98	11
07	07	surface water	Sulfate	152	mg/L	50	5/11/99	5
10	07	surface water	Sulfate	62	mg/L	5	3/7/00	3
02	07	surface water	Sulfate	142	mg/L	4	3/3/98	3
09	07	surface water	Sulfate	123	mg/L	10	12/6/99	12
11	07	surface water	Sulfate	170	mg/L	5	6/1/00	6
06	07	surface water	Sulfate	121	mg/L	5	2/10/99	2
01	07	surface water	Sulfate	102	mg/L	10.0	12/9/97	12
03	07	surface water	Sulfate	143	mg/L	50	5/26/98	5
08	07	surface water	Sulfate	104	mg/L	10	9/28/99	9
01	07	surface water	Sodium	62.7	mg/L	0.300	12/9/97	12
10	07	surface water	Sodium	48.0	mg/L	0.25	3/7/00	3
03	07	surface water	Sodium	115	mg/L	0.3	5/26/98	5
06	07	surface water	Sodium	83.7	mg/L	0.3	2/10/99	2
07	07	surface water	Sodium	109	mg/L	0.3	5/11/99	5
04	07	surface water	Sodium	153	mg/L	0.3	8/4/98	8
02	07	surface water	Sodium	120	mg/L	4	3/3/98	3
11	07	surface water	Sodium	119	mg/L	0.25	6/1/00	6
08	07	surface water	Sodium	163	mg/L	0.5	9/28/99	9
05	07	surface water	Sodium	110	mg/L	0.3	11/9/98	11

fIdRound	fIdWell	fIdMatrix	fIdNewName	fIdWell7	fIdUnits	fIdDL	fIdSampleDate	fIdSampleMont
09	07	surface water	Sodium	151	mg/L	0.5	12/6/99	12
09	07	surface water	Potassium	2.2	mg/L	1.0	12/6/99	12
01	07	surface water	Potassium	4.15	mg/L	0.300	12/9/97	12
02	07	surface water	Potassium	2	mg/L	2	3/3/98	3
06	07	surface water	Potassium	2.81	mg/L	1	2/10/99	2
08	07	surface water	Potassium	4.4	mg/L	1.0	9/28/99	9
04	07	surface water	Potassium	2	mg/L	0.3	8/4/98	8
11	07	surface water	Potassium	2.8	mg/L	0.5	6/1/00	6
03	07	surface water	Potassium	2.22	mg/L	0.3	5/26/98	5
05	07	surface water	Potassium	6.69	mg/L	0.3	11/9/98	11
10	07	surface water	Potassium	2.7	mg/L	0.5	3/7/00	3
07	07	surface water	Potassium	ND	mg/L	1	5/11/99	5
03	07	surface water	Phosphorus	0.154	mg/L	0.01	5/26/98	5
02	07	surface water	Phosphorus	0.456	mg/L	0.01	3/3/98	3
04	07	surface water	Phosphorus	0.36	mg/L	0.01	8/4/98	8
05	07	surface water	Phosphorus	0.704	mg/L	0.01	11/9/98	11
06	07	surface water	Phosphorus	0.259	mg/L	0.01	2/10/99	2
07	07	surface water	Phosphorus	0.356	mg/L	0.01	5/11/99	5
01	07	surface water	Phosphorus	0.297	mg/L	0.01	12/9/97	12
05	07	surface water	Phosphate	NS	mg/L	0.3	11/9/98	11
02	07	surface water	Phosphate	NS	mg/L	0.3	3/3/98	3
06	07	surface water	Phosphate	NS	mg/L	0.3	2/10/99	2
07	07	surface water	Phosphate	NS	mg/L	0.3	5/11/99	5
03	07	surface water	Phosphate	NS	mg/L	0.3	5/26/98	5
10	07	surface water	Phosphate	1.1	mg/L	0.30	3/7/00	3
09	07	surface water	Phosphate	0.3	mg/L	0.3	12/6/99	12
08	07	surface water	Phosphate	1.8	mg/L	0.3	9/28/99	9
04	07	surface water	Phosphate	NS	mg/L	0.3	8/4/98	8
11	07	surface water	Phosphate	0.9	mg/L	0.30	6/1/00	6
01	07	surface water	Phosphate	NS	mg/L	0.3	12/9/97	12
01	07	surface water	pH	7.82	pH units	2.0-12.5	12/9/97	12
02	07	surface water	pH	8.19	pH units	2.0-12.5	3/3/98	3
04	07	surface water	pH	8.03	pH units	2.5-12.0	8/4/98	8
11	07	surface water	pH	7.23	mg/L	0.01	6/1/00	6
03	07	surface water	pH	7.85	pH units	2.5-12.0	5/26/98	5
08	07	surface water	pH	7.74	pH units	1.00	9/28/99	9
06	07	surface water	pH	7.91	pH units		2/10/99	2
07	07	surface water	pH	7.86	pH units	2.5-12.0	5/11/99	5

fIdRound	fIdWell	fIdMatrix	fIdNewName	fIdWell7	fIdUnits	fIdDL	fIdSampleDate	fIdSampleMont
09	07	surface water	pH	7.67	pH units	1.00	12/6/99	12
10	07	surface water	pH	7.90	mg/L	0.01	3/7/00	3
11	07	surface water	pH	7.23	mg/L	0.01	6/1/00	6
08	07	surface water	pH	7.74	pH units	1.00	9/28/99	9
09	07	surface water	pH	7.67	pH units	1.00	12/6/99	12
10	07	surface water	pH	7.90	mg/L	0.01	3/7/00	3
11	07	surface water	Oil and Grease	ND	mg/L	0.5	6/1/00	6
09	07	surface water	Oil and Grease	ND	mg/L	1.0	12/6/99	12
10	07	surface water	Oil and Grease	ND	mg/L	0.5	3/7/00	3
05	07	surface water	Oil and Grease	ND	mg/L	1	11/9/98	11
02	07	surface water	Oil and Grease	ND	mg/L	0.971	3/3/98	3
07	07	surface water	Oil and Grease	ND	mg/L	1	5/11/99	5
06	07	surface water	Oil and Grease	0.952	mg/L	1	2/10/99	2
04	07	surface water	Oil and Grease	ND	mg/L	1.37	8/4/98	8
08	07	surface water	Oil and Grease	ND	mg/L	1.0	9/28/99	9
03	07	surface water	Oil and Grease	ND	mg/L	0.952	5/26/98	5
08	07	surface water	Oil and Grease	ND	mg/L	1.0	9/28/99	9
11	07	surface water	Oil and Grease	ND	mg/L	0.5	6/1/00	6
01	07	surface water	Oil and Grease	ND	mg/L	1.25	12/9/97	12
09	07	surface water	Oil and Grease	ND	mg/L	1.0	12/6/99	12
10	07	surface water	Oil and Grease	ND	mg/L	0.5	3/7/00	3
02	07	surface water	Nitrogen	NS	mg/L	0.1	3/3/98	3
07	07	surface water	Nitrogen	0.545	mg/L	0.4	5/11/99	5
05	07	surface water	Nitrogen	1.75	mg/L	0.1	11/9/98	11
09	07	surface water	Nitrogen	NS	mg/L	0.1	12/6/99	12
02	07	surface water	Nitrogen	NS	mg/L	0.1	3/3/98	3
03	07	surface water	Nitrogen	0.8	mg/Kg	0.5	5/26/98	5
08	07	surface water	Nitrogen	0.6	mg/L	0.1	9/28/99	9
04	07	surface water	Nitrogen	NS	mg/L	0.1	8/4/98	8
10	07	surface water	Nitrogen	0.1	mg/L	0.05	3/7/00	3
04	07	surface water	Nitrogen	NS	mg/L	0.1	8/4/98	8
09	07	surface water	Nitrogen	NS	mg/L	0.1	12/6/99	12
06	07	surface water	Nitrogen	NS	mg/L	0.1	2/10/99	2
06	07	surface water	Nitrogen	NS	mg/L	0.1	2/10/99	2
01	07	surface water	Nitrogen	0.222	mg/L	0.100	12/9/97	12
04	07	surface water	Nitrogen	NS	mg/L	0.1	8/4/98	8
02	07	surface water	Nitrogen	NS	mg/L	0.1	3/3/98	3
06	07	surface water	Nitrogen	NS	mg/L	0.1	2/10/99	2

fIdRound	fIdWell	fIdMatrix	fIdNewName	fIdWell7	fIdUnits	fIdDL	fIdSampleDate	fIdSampleMont
08	07	surface water	Nitrite	ND	mg/L	0.02	9/28/99	9
09	07	surface water	Nitrite	ND	mg/L	0.02	12/6/99	12
10	07	surface water	Nitrate-N	2.7	mg/L	0.05	3/7/00	3
09	07	surface water	Nitrate-N	ND	mg/L	0.1	12/6/99	12
06	07	surface water	Nitrate-N	1.94	mg/L	0.05	2/10/99	2
08	07	surface water	Nitrate-N	ND	mg/L	0.1	9/28/99	9
07	07	surface water	Nitrate-N	0.089	mg/L	0.05	5/11/99	5
03	07	surface water	Nitrate-N	0.356	mg/L	0.1	5/26/98	5
05	07	surface water	Nitrate-N	1.15	mg/L	0.05	11/9/98	11
01	07	surface water	Nitrate-N	0.501	mg/L	0.100	12/9/97	12
11	07	surface water	Nitrate-N	ND	mg/L	0.05	6/1/00	6
04	07	surface water	Nitrate-N	0.07	mg/L	0.05	8/4/98	8
02	07	surface water	Nitrate-N	1.91	mg/L	0.1	3/3/98	3
06	07	surface water	Mercury	NS	mg/L	0.0002	2/10/99	2
08	07	surface water	Mercury	ND	mg/L	0.0002	9/28/99	9
10	07	surface water	Mercury	ND	mg/L	0.0002	3/7/00	3
11	07	surface water	Mercury	NS	mg/L	0.0002	6/1/00	6
01	07	surface water	Mercury	ND	mg/L	0.000200	12/9/97	12
02	07	surface water	Mercury	NS	mg/L	0.0002	3/3/98	3
03	07	surface water	Mercury	ND	mg/L	0.0002	5/26/98	5
04	07	surface water	Mercury	NS	mg/L	0.0002	8/4/98	8
05	07	surface water	Mercury	ND	mg/L	0.0002	11/9/98	11
07	07	surface water	Mercury	ND	mg/L	0.0002	5/11/99	5
09	07	surface water	Mercury	NS	mg/L	0.0002	12/6/99	12
06	07	surface water	Manganese	0.107	mg/L	0.01	2/10/99	2
04	07	surface water	Manganese	0.13	mg/L	0.01	8/4/98	8
07	07	surface water	Manganese	0.185	mg/L	0.01	5/11/99	5
10	07	surface water	Manganese	0.03	mg/L	0.005	3/7/00	3
01	07	surface water	Manganese	0.194	mg/L	0.0100	12/9/97	12
03	07	surface water	Manganese	0.063	mg/L	0.01	5/26/98	5
11	07	surface water	Manganese	0.18	mg/L	0.005	6/1/00	6
02	07	surface water	Manganese	0.14	mg/L	0.01	3/3/98	3
09	07	surface water	Manganese	0.18	mg/L	0.01	12/6/99	12
08	07	surface water	Manganese	0.35	mg/L	0.01	9/28/99	9
05	07	surface water	Manganese	0.559	mg/L	0.01	11/9/98	11
03	07	surface water	Magnesium	46.5	mg/L	0.2	5/26/98	5
09	07	surface water	Magnesium	52.4	mg/L	0.5	12/6/99	12
08	07	surface water	Magnesium	49.4	mg/L	0.5	9/28/99	9

fIdRound	fIdWell	fIdMatrix	fIdNewName	fIdWell7	fIdUnits	fIdDL	fIdSampleDate	fIdSampleMont
10	07	surface water	Magnesium	17.8	mg/L	0.20	3/7/00	3
01	07	surface water	Magnesium	25.7	mg/L	0.200	12/9/97	12
02	07	surface water	Magnesium	37	mg/L	0.1	3/3/98	3
06	07	surface water	Magnesium	32.2	mg/L	0.2	2/10/99	2
11	07	surface water	Magnesium	47.0	mg/L	0.2	6/1/00	6
05	07	surface water	Magnesium	41.8	mg/L	0.2	11/9/98	11
04	07	surface water	Magnesium	58.9	mg/L	0.2	8/4/98	8
07	07	surface water	Magnesium	41.6	mg/L	0.2	5/11/99	5
05	07	surface water	Lead	ND	mg/L	0.001	11/9/98	11
06	07	surface water	Lead	0.00107	mg/L	0.001	2/10/99	2
01	07	surface water	Lead	0.024	mg/L	0.0200	12/9/97	12
07	07	surface water	Lead	ND	mg/L	0.001	5/11/99	5
02	07	surface water	Lead	ND	mg/L	0.015	3/3/98	3
03	07	surface water	Lead	ND	mg/L	0.001	5/26/98	5
11	07	surface water	Lead	ND	mg/L	0.005	6/1/00	6
10	07	surface water	Lead	0.008	mg/L	0.005	3/7/00	3
09	07	surface water	Lead	ND	mg/L	0.05	12/6/99	12
08	07	surface water	Lead	ND	mg/L	0.1	9/28/99	9
04	07	surface water	Lead	ND	mg/L	0.001	8/4/98	8
05	07	surface water	Iron	1.92	mg/L	0.05	11/9/98	11
01	07	surface water	Iron	3.34	mg/L	0.0500	12/9/97	12
11	07	surface water	Iron	ND	mg/L	0.03	6/1/00	6
03	07	surface water	Iron	0.137	mg/L	0.05	5/26/98	5
06	07	surface water	Iron	0.511	mg/L	0.05	2/10/99	2
07	07	surface water	Iron	0.236	mg/L	0.05	5/11/99	5
10	07	surface water	Iron	0.04J	mg/L	0.03	3/7/00	3
04	07	surface water	Iron	0.149	mg/L	0.05	8/4/98	8
08	07	surface water	Iron	ND	mg/L	0.05	9/28/99	9
02	07	surface water	Iron	0.7	mg/L	0.1	3/3/98	3
09	07	surface water	Iron	0.24	mg/L	0.05	12/6/99	12
07	07	surface water	Hydroxide	ND	mg/L	0.5	5/11/99	5
10	07	surface water	Hydroxide	ND	mg/L	0.5	3/7/00	3
11	07	surface water	Hydroxide	ND	mg/L	0.5	6/1/00	6
04	07	surface water	Hydroxide	ND	mg/L	0.5	8/4/98	8
08	07	surface water	Hydroxide	ND	mg/L	0.5	9/28/99	9
02	07	surface water	Hydroxide	ND	mg/L	0.5	3/3/98	3
01	07	surface water	Hydroxide	ND	mg/L	1.00	12/9/97	12
03	07	surface water	Hydroxide	ND	mg/L	0.5	5/26/98	5

fIdRound	fIdWell	fIdMatrix	fIdNewName	fIdWell7	fIdUnits	fIdDL	fIdSampleDate	fIdSampleMont
06	07	surface water	Hydroxide	NS	mg/L	0.5	2/10/99	2
05	07	surface water	Hydroxide	ND	mg/L	0.5	11/9/98	11
09	07	surface water	Hydroxide	ND	mg/L	2	12/6/99	12
07	07	surface water	Hardness (CaCO3)	322	mg/L	2	5/11/99	5
06	07	surface water	Hardness (CaCO3)	284	mg/L	1	2/10/99	2
05	07	surface water	Hardness (CaCO3)	396	mg/L	1	11/9/98	11
04	07	surface water	Hardness (CaCO3)	497	mg/L	5	8/4/98	8
01	07	surface water	Hardness (CaCO3)	217	mg/L	10.0	12/9/97	12
02	07	surface water	Hardness (CaCO3)	328	mg/L	10	3/3/98	3
03	07	surface water	Hardness (CaCO3)	364	mg/L	5	5/26/98	5
11	07	surface water	Hardness (CaCO3)	412	mg/L	1	6/1/00	6
08	07	surface water	Hardness (CaCO3)	432	mg/L	2	9/28/99	9
09	07	surface water	Hardness (CaCO3)	450	mg/L	2	12/6/99	12
10	07	surface water	Hardness (CaCO3)	168	mg/L	1	3/7/00	3
08	07	surface water	Fluoride	0.8	mg/L	0.1	9/28/99	9
11	07	surface water	Fluoride	0.7	mg/L	0.1	6/1/00	6
05	07	surface water	Fluoride	0.37	mg/L	0.1	11/9/98	11
04	07	surface water	Fluoride	0.586	mg/L	0.1	8/4/98	8
10	07	surface water	Fluoride	0.4	mg/L	0.1	3/7/00	3
09	07	surface water	Fluoride	0.8	mg/L	0.2	12/6/99	12
02	07	surface water	Fluoride	0.429	mg/L	0.2	3/3/98	3
07	07	surface water	Fluoride	0.476	mg/L	0.1	5/11/99	5
06	07	surface water	Fluoride	0.322	mg/L	0.1	2/10/99	2
03	07	surface water	Fluoride	0.403	mg/L	0.2	5/26/98	5
01	07	surface water	Fluoride	ND	mg/L	0.200	12/9/97	12
09	07	surface water	Fecal Coliform	50	mpn/100ml	2	12/6/99	12
07	07	surface water	Fecal Coliform	>23	mpn/100ml	2	5/11/99	5
01	07	surface water	Fecal Coliform	>1600	mpn/100ml	2	12/9/97	12
03	07	surface water	Fecal Coliform	900	mpn/100ml	2	5/26/98	5
06	07	surface water	Fecal Coliform	30	mpn/100ml	2	2/10/99	2
05	07	surface water	Fecal Coliform	>1600	mpn/100ml	2	11/9/98	11
04	07	surface water	Fecal Coliform	140	mpn/100ml	2	8/4/98	8
11	07	surface water	Fecal Coliform	50	MPN/mL	2	6/1/00	6
10	07	surface water	Fecal Coliform	240	MPN/100 m	2	3/7/00	3
08	07	surface water	Fecal Coliform	1600	mpn/100ml	2	9/28/99	9
02	07	surface water	Fecal Coliform	300	mpn/100ml	2	3/3/98	3
02	07	surface water	Cyanide (Total)	NS	mg/L	0.005	3/3/98	3
06	07	surface water	Cyanide (Total)	NS	mg/L	0.005	2/10/99	2

fIdRound	fIdWell	fIdMatrix	fIdNewName	fIdWell7	fIdUnits	fIdDL	fIdSampleDate	fIdSampleMont
09	07	surface water	Cyanide (Total)	NS	mg/L	0.005	12/6/99	12
04	07	surface water	Cyanide (Total)	NS	mg/L	0.005	8/4/98	8
10	07	surface water	Cyanide (Total)	ND	mg/L	0.01	3/7/00	3
03	07	surface water	Cyanide (Total)	ND	mg/L	0.005	5/26/98	5
02	07	surface water	Cyanide (Total)	NS	mg/L	0.005	3/3/98	3
01	07	surface water	Cyanide (Total)	ND	mg/L	0.00500	12/9/97	12
04	07	surface water	Cyanide (Total)	NS	mg/L	0.005	8/4/98	8
11	07	surface water	Cyanide (Total)	NS	mg/L	0.01	6/1/00	6
05	07	surface water	Cyanide (Total)	ND	mg/L	0.005	11/9/98	11
07	07	surface water	Cyanide (Total)	ND	mg/L	0.005	5/11/99	5
08	07	surface water	Cyanide (Total)	ND	mg/L	0.01	9/28/99	9
06	07	surface water	Cyanide (Total)	NS	mg/L	0.005	2/10/99	2
09	07	surface water	Cyanide (Total)	NS	mg/L	0.005	12/6/99	12
06	07	surface water	Copper	NS	mg/L	0.005	2/10/99	2
09	07	surface water	Copper	0.03	mg/L	0.02	12/6/99	12
08	07	surface water	Copper	ND	mg/L	0.02	9/28/99	9
07	07	surface water	Copper	ND	mg/L	0.005	5/11/99	5
01	07	surface water	Copper	ND	mg/L	0.00500	12/9/97	12
04	07	surface water	Copper	ND	mg/L	0.005	8/4/98	8
03	07	surface water	Copper	ND	mg/L	0.005	5/26/98	5
05	07	surface water	Copper	ND	mg/L	0.005	11/9/98	11
10	07	surface water	Copper	ND	mg/L	0.005	3/7/00	3
02	07	surface water	Copper	ND	mg/L	0.02	3/3/98	3
11	07	surface water	Copper	ND	mg/L	0.005	6/1/00	6
08	07	surface water	Conductivity	1470	umhos/cm	10	9/28/99	9
09	07	surface water	Conductivity	1500	umhos/cm	10	12/6/99	12
10	07	surface water	Conductivity	536	mg/L	5	3/7/00	3
11	07	surface water	Conductivity	1,320	mg/L	5	6/1/00	6
07	07	surface water	Conductivity	1120	umhos/cm	1	5/11/99	5
06	07	surface water	Conductivity	875	umhos/cm	1	2/10/99	2
05	07	surface water	Conductivity	1150	umhos/cm	1	11/9/98	11
01	07	surface water	Conductivity	740	umhos/cm	1.00	12/9/97	12
02	07	surface water	Conductivity	935	umhos/cm	1	3/3/98	3
03	07	surface water	Conductivity	1080	umhos/cm	1	5/26/98	5
04	07	surface water	Conductivity	1450	umhos/cm	1	8/4/98	8
10	07	surface water	Chloride	59	mg/L	0.5	3/7/00	3
07	07	surface water	Chloride	112	mg/L	1	5/11/99	5
06	07	surface water	Chloride	90.8	mg/L	1	2/10/99	2



fIdRound	fIdWell	fIdMatrix	fIdNewName	fIdWell7	fIdUnits	fIdDL	fIdSampleDate	fIdSampleMont
02	07	surface water	Chloride	105	mg/L	20	3/3/98	3
11	07	surface water	Chloride	154	mg/L	0.5	6/1/00	6
08	07	surface water	Chloride	188	mg/L	1	9/28/99	9
01	07	surface water	Chloride	126	mg/L	10.0	12/9/97	12
10	07	surface water	Chloride	59	mg/L	0.5	3/7/00	3
09	07	surface water	Chloride	193	mg/L	1	12/6/99	12
08	07	surface water	Chloride	188	mg/L	1	9/28/99	9
09	07	surface water	Chloride	193	mg/L	1	12/6/99	12
04	07	surface water	Chloride	172	mg/L	1	8/4/98	8
05	07	surface water	Chloride	133	mg/L	1	11/9/98	11
11	07	surface water	Chloride	154	mg/L	0.5	6/1/00	6
03	07	surface water	Chloride	145	mg/L	50	5/26/98	5
02	07	surface water	Carbonate	3.02	mg/L	0.5	3/3/98	3
03	07	surface water	Carbonate	1.78	mg/L	0.5	5/26/98	5
04	07	surface water	Carbonate	3.62	mg/L	0.5	8/4/98	8
07	07	surface water	Carbonate	1.93	mg/L	0.5	5/11/99	5
05	07	surface water	Carbonate	0.623	mg/L	0.5	11/9/98	11
08	07	surface water	Carbonate	ND	mg/L	0.5	9/28/99	9
09	07	surface water	Carbonate	ND	mg/L	2	12/6/99	12
10	07	surface water	Carbonate	ND	mg/L	0.5	3/7/00	3
11	07	surface water	Carbonate	ND	mg/L	0.5	6/1/00	6
01	07	surface water	Carbonate	ND	mg/L	1.00	12/9/97	12
06	07	surface water	Carbonate	2.08	mg/L	0.5	2/10/99	2
09	07	surface water	Calcium	81.8	mg/L	0.5	12/6/99	12
08	07	surface water	Calcium	75.2	mg/L	0.5	9/28/99	9
02	07	surface water	Calcium	71	mg/L	0.2	3/3/98	3
11	07	surface water	Calcium	74.0	mg/L	0.1	6/1/00	6
04	07	surface water	Calcium	89.6	mg/L	0.1	8/4/98	8
01	07	surface water	Calcium	46.6	mg/L	0.100	12/9/97	12
10	07	surface water	Calcium	31.1	mg/L	0.10	3/7/00	3
06	07	surface water	Calcium	51.8	mg/L	0.1	2/10/99	2
05	07	surface water	Calcium	66.7	mg/L	0.1	11/9/98	11
03	07	surface water	Calcium	70.3	mg/L	0.1	5/26/98	5
07	07	surface water	Calcium	65.2	mg/L	0.1	5/11/99	5
05	07	surface water	Boron	0.23	mg/L	0.1	11/9/98	11
11	07	surface water	Boron	0.3	mg/L	0.1	6/1/00	6
07	07	surface water	Boron	0.144	mg/L	0.1	5/11/99	5
04	07	surface water	Boron	0.326	mg/L	0.1	8/4/98	8

fIdRound	fIdWell	fIdMatrix	fIdNewName	fIdWell7	fIdUnits	fIdDL	fIdSampleDate	fIdSampleMont
01	07	surface water	Boron	ND	mg/L	0.5	12/9/97	12
06	07	surface water	Boron	0.176	mg/L	0.1	2/10/99	2
08	07	surface water	Boron	0.2	mg/L	0.2	9/28/99	9
09	07	surface water	Boron	ND	mg/L	0.2	12/6/99	12
02	07	surface water	Boron	ND	mg/L	0.5	3/3/98	3
10	07	surface water	Boron	ND	mg/L	0.1	3/7/00	3
03	07	surface water	Boron	ND	mg/L	0.5	5/26/98	5
01	07	surface water	Biochemical Oxygen Dem	2.48	mg/L	2.00	12/9/97	12
10	07	surface water	Biochemical Oxygen Dem	ND	mg/L	2	3/7/00	3
02	07	surface water	Biochemical Oxygen Dem	NS	mg/L	2	3/3/98	3
11	07	surface water	Biochemical Oxygen Dem	NS	mg/L	2	6/1/00	6
05	07	surface water	Biochemical Oxygen Dem	8.02	mg/L	2	11/9/98	11
07	07	surface water	Biochemical Oxygen Dem	ND	mg/L	2	5/11/99	5
08	07	surface water	Biochemical Oxygen Dem	ND	mg/L	2	9/28/99	9
03	07	surface water	Biochemical Oxygen Dem	ND	mg/L	2	5/26/98	5
04	07	surface water	Biochemical Oxygen Dem	NS	mg/L	2	8/4/98	8
06	07	surface water	Biochemical Oxygen Dem	NS	mg/L	2	2/10/99	2
09	07	surface water	Biochemical Oxygen Dem	NS	mg/L	2	12/6/99	12
02	07	surface water	Bicarbonate	217	mg/L	1	3/3/98	3
05	07	surface water	Bicarbonate	178	mg/L	1	11/9/98	11
04	07	surface water	Bicarbonate	359	mg/L	1	8/4/98	8
09	07	surface water	Bicarbonate	380	mg/L	2	12/6/99	12
01	07	surface water	Bicarbonate	120	mg/L	1.00	12/9/97	12
07	07	surface water	Bicarbonate	264	mg/L	1	5/11/99	5
03	07	surface water	Bicarbonate	267	mg/L	1	5/26/98	5
10	07	surface water	Bicarbonate	112	mg/L	1	3/7/00	3
08	07	surface water	Bicarbonate	398	mg/L	1	9/28/99	9
11	07	surface water	Bicarbonate	320	mg/L	1	6/1/00	6
06	07	surface water	Bicarbonate	202	mg/L	1	2/10/99	2
06	07	surface water	Arsenic	NS	mg/L	0.025	2/10/99	2
07	07	surface water	Arsenic	ND	mg/L	0.025	5/11/99	5
02	07	surface water	Arsenic	ND	mg/L	0.01	3/3/98	3
01	07	surface water	Arsenic	ND	mg/L	0.0250	12/9/97	12
03	07	surface water	Arsenic	ND	mg/L	0.025	5/26/98	5
08	07	surface water	Arsenic	ND	mg/L	0.005	9/28/99	9
09	07	surface water	Arsenic	ND	mg/L	0.005	12/6/99	12
05	07	surface water	Arsenic	ND	mg/L	0.025	11/9/98	11
10	07	surface water	Arsenic	ND	mg/L	0.025	3/7/00	3

fIdRound	fIdWell	fIdMatrix	fIdNewName	fIdWell7	fIdUnits	fIdDL	fIdSampleDate	fIdSampleMont
11	07	surface water	Arsenic	ND	mg/L	0.025	6/1/00	6
04	07	surface water	Arsenic	ND	mg/L	0.025	8/4/98	8
09	07	surface water	Aluminum	0.1	mg/L	0.1	12/6/99	12
01	07	surface water	Alkalinity (CaCO3)	121	mg/L	1.00	12/9/97	12
02	07	surface water	Alkalinity (CaCO3)	220	mg/L	1	3/3/98	3
03	07	surface water	Alkalinity (CaCO3)	269	mg/L	1	5/26/98	5
04	07	surface water	Alkalinity (CaCO3)	363	mg/L	1	8/4/98	8
11	07	surface water	Alkalinity (CaCO3)	320	mg/L	1	6/1/00	6
05	07	surface water	Alkalinity (CaCO3)	179	mg/L	1	11/9/98	11
06	07	surface water	Alkalinity (CaCO3)	204	mg/L	1	2/10/99	2
07	07	surface water	Alkalinity (CaCO3)	266	mg/L	1	5/11/99	5
08	07	surface water	Alkalinity (CaCO3)	398	mg/L	1	9/28/99	9
09	07	surface water	Alkalinity (CaCO3)	380	mg/L	2	12/6/99	12
10	07	surface water	Alkalinity (CaCO3)	112	mg/L	1	3/7/00	3

Fallbrook Creek

See Sant Marg File for Data

**DATA SUMMARY**

**Disc 1 of 2 (submitted by Camp Pendleton)**

LAW-Crandall

- 11043000 Daily Mean Discharge Data, "Murrieta C A Temecula, CA", 1930 to 1997, discharge as ft<sup>3</sup> / s
- 11044250 Daily Mean Discharge Data, Rainbow Cr near Fallbrook, CA, 1989 – 1998
- 11044800 Daily Mean Discharge Data, De Luz Cr near De Luz, CA, 1992 – 1997
- 11045300 Daily Mean Discharge Data, Fallbrook Cr, near Fallbrook, CA, 1993 – 1998
- 11046360 Daily Mean Discharge Data, Cristianitos C Ab San Mateo C Nr San Clemente, CA, 1993 – 1997
- CADMaps Southern California Road Map, San Mateo and Santa Margarita Watersheds, Monitoring Locations (San Mateo), Monitoring Locations (Santa Margarita)
- Cover 2 pg cover = Final "Water Quality Studies and Proposed Watershed Monitoring Program for Portions of San Mateo and Santa Margarita River Watersheds (Vol. 2 of 2)
- Cover2 2 pg cover = Final "Water Quality Studies and Proposed Watershed Monitoring Program for Portions of San Mateo and Santa Margarita River Watersheds (Vol. 1 of 2)
- precip trouble opening document, but appears to be rainfall data for 1942 – 1999 SC Dam, Oceanside, Escondido, Escondido 2
- precip1 Graph with rainfall data from 1942 – 1999 SC Dam, Oceanside, Escondido, Escondido 2
- precip10 San Clemente Dam 1942 – 1997 data = ?
- precip11 San Clemente Dam Rainfall data 1942 – 1997
- precip12 San Clemente Dam Precipitation Record 1940 – 1998
- precip13 Oceanside & Oceanside Harbor Station Precipitation Record 1940 - 1998
- precip14 Oceanside 1942 – 1997 data = ?
- precip15 Oceanside Harbor Rainfall data 1943 – 1997
- precip2 Combined Precipitation Record 1940 – 1998, location=?
- precip3 Escondido, CA 1979 – 1997 data = ?
- precip4 Escondido 2 Rainfall data 1979 – 1997
- precip5 Escondido 2 Precipitation Record 1979 – 1997
- precip6 Escondido 1931 – 1979 data = ?
- precip7 Escondido Rainfall Record 1934 – 1979
- precip8 Escondido Precipitation Record, 1940 – 1979
- precip9 San Clem 1931 – 1979 data = ?
- Report Final Report of Water Quality Studies and Proposed Watershed Monitoring Program for Portions of San Mateo and Santa Margarita River Watershed Marine Corps Base, Camp Pendleton, California. Contract No. N68711-95-D-7573, D.O. 0021
- table10 San Mateo Watershed 1998-1999 data on alkalinity, arsenic, bicarbonate, BOD, boron, calcium, carbonate, chloride, conductivity, copper, cyanide, fecal coliform, fluoride, hardness, hydroxide, iron, lead, magnesium, manganese, mercury, nitrate, nitrogen, oil & grease, pH, phosphorus, potassium, sodium, sulfate, surfactants, total coliform, TDS, TOC and zinc.

- table11 Santa Margarita Watershed 1997-1999 data on alkalinity, arsenic, bicarbonate, BOD, boron, calcium, carbonate, chloride, conductivity, copper, cyanide, fecal coliform, fluoride, hardness, hydroxide, iron, lead, magnesium, manganese, mercury, nitrate, nitrogen, oil & grease, pH, phosphorus, potassium, sodium, sulfate, surfactants, total coliform, TDS, TOC and zinc.
- Table8PDF Water Quality Evaluation Summary, San Mateo Watershed
- WQ Microsoft Access Database: Many reports and tables (try reports on pollutant loading and surface waters)

### SWR West Study

These GIS files require ArcView software before they can be opened. Some files also require the spatial analyst and 3-D analyst extensions to be loaded. Please see "Read me" file on disc. Some topo maps are .tif files.

### SMRWQM-Group

SMR Figure3\_41

Figure 3-4 = Proposed Water Quality Sampling Locations

SMRWQM-Draft Plan

Framework Monitoring Plan for the Santa Margarita River Watershed California

SMRWQM-Group Presentation

Powerpoint Presentation: Water Quality Monitoring and Water Management

## Disc 2 of 2

### LAW-Crandall

chart	Alkalinity Chart Fallbrook Cr near Fallbrook, CA
chart1	De Luz Cr, Fallbrook Cr, Murrieta Cr, Rainbow Cr, San Mateo Cr (x2), Sandia Cr, Santa Margarita River (x3) for alkalinity (2 types), aluminum, antimony and arsenic
chart10	Cristianitos Cr, De Luz Cr, Fallbrook Cr, Murrieta Cr, Rainbow Cr, San Mateo Cr, Sandia Cr, Santa Margarita Rvr for sodium, sulfate, surfactants, thallium, tin,
chart11	Santa Margarita Rvr, De Luz Cr, Cristianitos Cr, Murrieta Cr, Rainbow Cr, Sandia Cr, San Mateo Cr, Fallbrook Cr for TOC, vanadium and zinc
chart12	same creeks for fluoride
chart13	same creeks for oil & grease, pH, phosphate, phosphorus
chart14	same creeks for nitrate, nitrite
chart15	same creeks for historical data
chart16	same creeks for phosphate, potassium, selenium, silica, silicon
chart17	same creeks for TDS, TOC, vanadium, zinc
chart2	same creeks for arsenic, barium, beryllium, bicarbonate, BOD, boron
chart3	could not be opened
chart4	opens as gibberish
chart5	opens as gibberish
chart6	same creeks for fluoride, hardness, hydroxide, iron, lead
chart7	same creeks for lead, lithium, magnesium, manganese, mercury
chart8	could not open
chart9	same creeks for phosphorus, potassium, selenium, silica, silicon, silver
Piper Diagrams	diagrams for 1997 – 1998 for magnesium, sodium + potassium, carbonate + bicarbonate, sulfate, chloride, calcium, sulfate + chloride, calcium + magnesium

### SMR West Study

#### Final West Project

Appendix A	literature review
Appendix B	Plot of computed hydrograph with observed hydrograph
Appendix C	Plot of computed lake storage with observed storage
Appendix D	Plot of precipitation during and preceding Jan. 1995 event
Appendix E	Cross section locations and flood plain delineations
Appendix F	Water surface profile plots
Appendix G	Water surface profile tables
Appendix H	Cross section plots
Appendix J	Plot of sub basin frequency flows
Appendix I	Plot of sediment frequency yield by LA Corps method
SMR Final	Final Report Santa Margarita River Hydrology, Hydraulics and Sedimentation Study

### West Project Files

All supporting files and documents are included on this disc as word, excel and other file formats that are not .pdf.