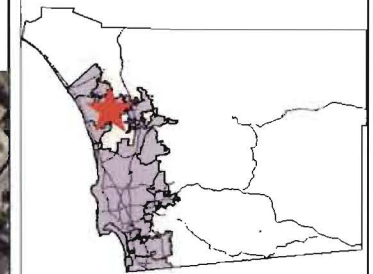


# Lake San Marcos Culverts



## Legend

- CNTYBDRY
- Culverts
- Streets
- Toll Highway
- Highways
- Freeways



Scale: 1:3,644

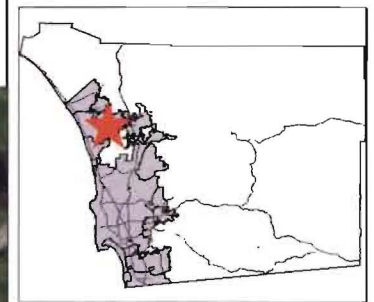
This product may contain information which has been derived from the information obtained by Thomas Brothers Maps. Map center: 33° 7' 33.88#034; N, 117° 12' 17.68#034; W.

THIS MAP/DATA IS PROVIDED WITHOUT WARRANTY OF ANY KIND, EITHER EXPRESS OR IMPLIED, INCLUDING BUT NOT LIMITED TO THE IMPLIED WARRANTIES OF MERCHANTABILITY AND FITNESS FOR A PARTICULAR PURPOSE. This product may contain information from the SANDAG Regional Information System which cannot be reproduced without the written permission of SANDAG.





# lake San Marcos Culverts



- Legend**
- CNTYBDRY
  - Culverts
  - Streets
  - Toll Highway
  - Highways
  - Freeways



Scale: 1:2,758

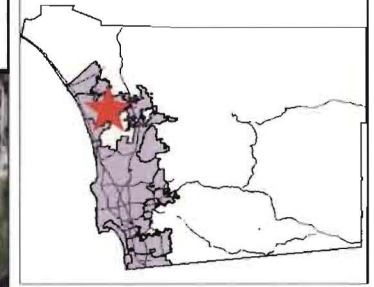
This product is a public information which has been reproduced with the permission granted by Thomas Brothers Map. Map center: 33° 7' 23.98" #034; N, 117° 12' 21.66" #034; W

THIS MAP/DATA IS PROVIDED WITHOUT WARRANTY OF ANY KIND, EITHER EXPRESS OR IMPLIED, INCLUDING BUT NOT LIMITED TO THE IMPLIED WARRANTIES OF MERCHANTABILITY AND FITNESS FOR A PARTICULAR PURPOSE. This product may contain information from the SANDAG Regional Information System which cannot be reproduced without the written permission of SANDAG.





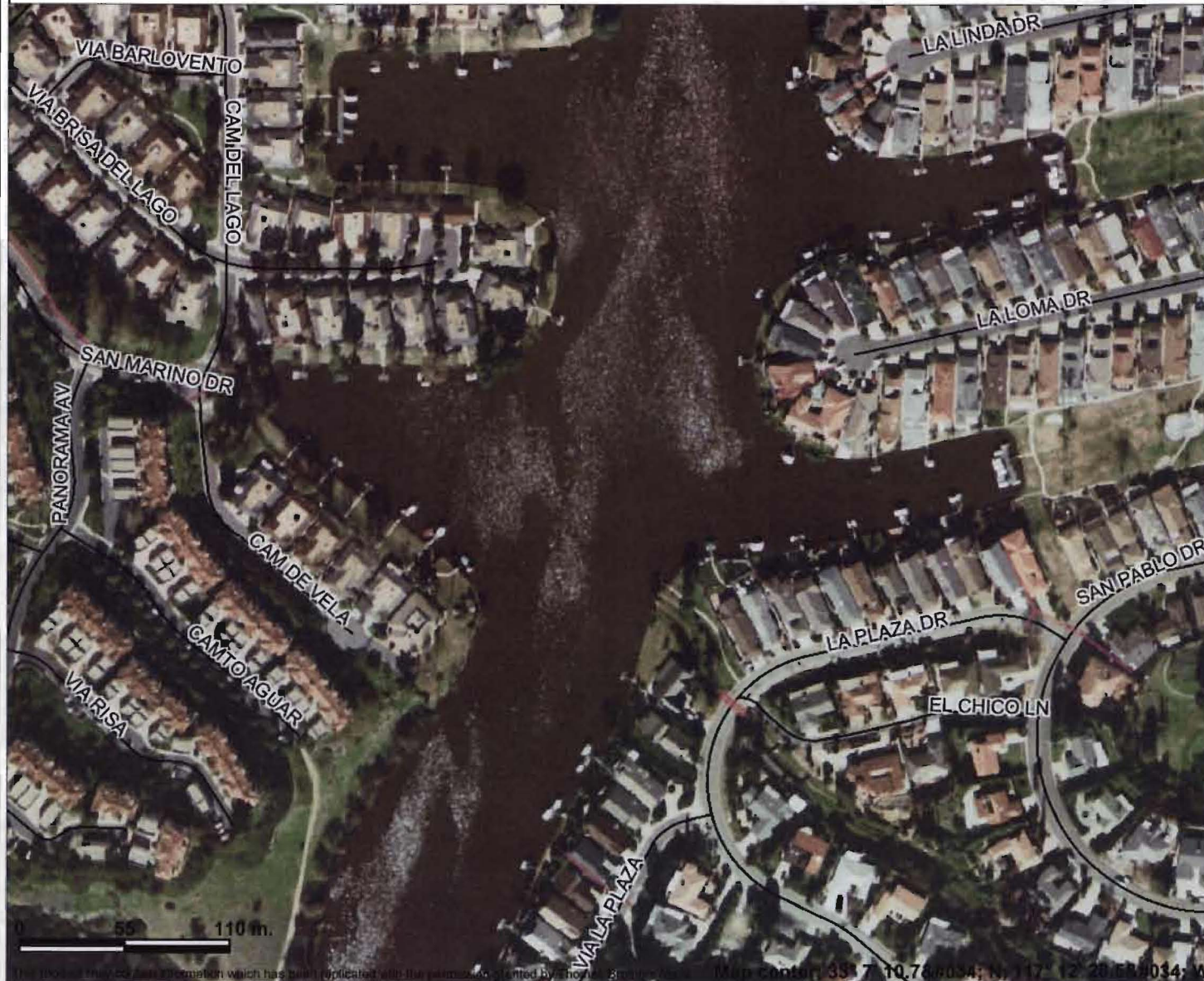
# Lake San Marcos Culverts



**Legend**

- CNTYBDRY
- Culverts
- Streets
- Toll Highway
- Highways
- Freeways

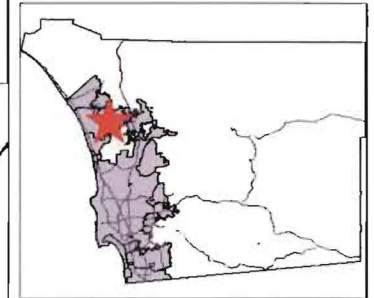
Scale: 1:3,197



THIS MAP/DATA IS PROVIDED WITHOUT WARRANTY OF ANY KIND, EITHER EXPRESS OR IMPLIED, INCLUDING BUT NOT LIMITED TO THE IMPLIED WARRANTIES OF MERCHANTABILITY AND FITNESS FOR A PARTICULAR PURPOSE. This product may contain information from the SANDAG Regional Information System which cannot be reproduced without the written permission of SANDAG.



# Lake San Marcos Culverts



**Legend**

- CNTYBDRY
- Lakes
- Lake
- Creeks
- Culverts
- Incorporated Areas
- S.D. COUNTY
- Other
- Streets
- Toll Highway
- Highways
- Freeways

Scale: 1:3,197



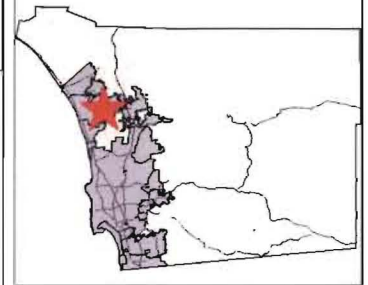
This product may contain information which has been replicated with the permission granted by Thomas Brothers Maps.

THIS MAP/DATA IS PROVIDED WITHOUT WARRANTY OF ANY KIND, EITHER EXPRESS OR IMPLIED, INCLUDING BUT NOT LIMITED TO THE IMPLIED WARRANTIES OF MERCHANTABILITY AND FITNESS FOR A PARTICULAR PURPOSE. This product may contain information from the SANDAG Regional Information System which cannot be reproduced without the written permission of SANDAG.





# Lake San Marcos Culverts



## Legend

- CNTYBDRY
- Lakes
  - Lake
- Creeks
- - - Culverts
- Incorporated Areas
  - S.D. COUNTY
  - Other
- ~ Streets
- Toll Highway
- Highways
- Freeways



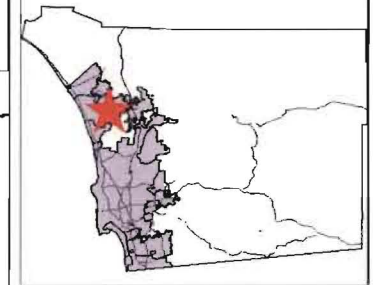
Scale: 1:3,197

This product may contain information which has been replicated with the permission granted by Thomas Brothers Maps. Map center: 33° 7' 24.4&#034; N, 117° 12' 22.5&#034; W

THIS MAP/DATA IS PROVIDED WITHOUT WARRANTY OF ANY KIND, EITHER EXPRESS OR IMPLIED, INCLUDING BUT NOT LIMITED TO THE IMPLIED WARRANTIES OF MERCHANTABILITY AND FITNESS FOR A PARTICULAR PURPOSE. This product may contain information from the SANDAG Regional Information System which cannot be reproduced without the written permission of SANDAG.



# Lake San Marcos Culverts



## Legend

- CNTYBDRY
- Lakes
- Lake
- Creeks
- Culverts
- Incorporated Areas
- S.D. COUNTY
- Other
- Streets
- Toll Highway
- Highways
- Freeways



Scale: 1:3,197

This product may contain information which has been replicated with the permission granted by Thomas Brothers Maps.

Map center: 33° 7' 11.4"N, 117° 12' 29.6"W

THIS MAP/DATA IS PROVIDED WITHOUT WARRANTY OF ANY KIND, EITHER EXPRESS OR IMPLIED, INCLUDING BUT NOT LIMITED TO THE IMPLIED WARRANTIES OF MERCHANTABILITY AND FITNESS FOR A PARTICULAR PURPOSE. This product may contain information from the SANDAG Regional Information System which cannot be reproduced without the written permission of SANDAG.

