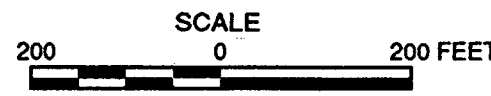


**GEOLOGIC SECTION A-A' LOOKING SOUTHEAST**

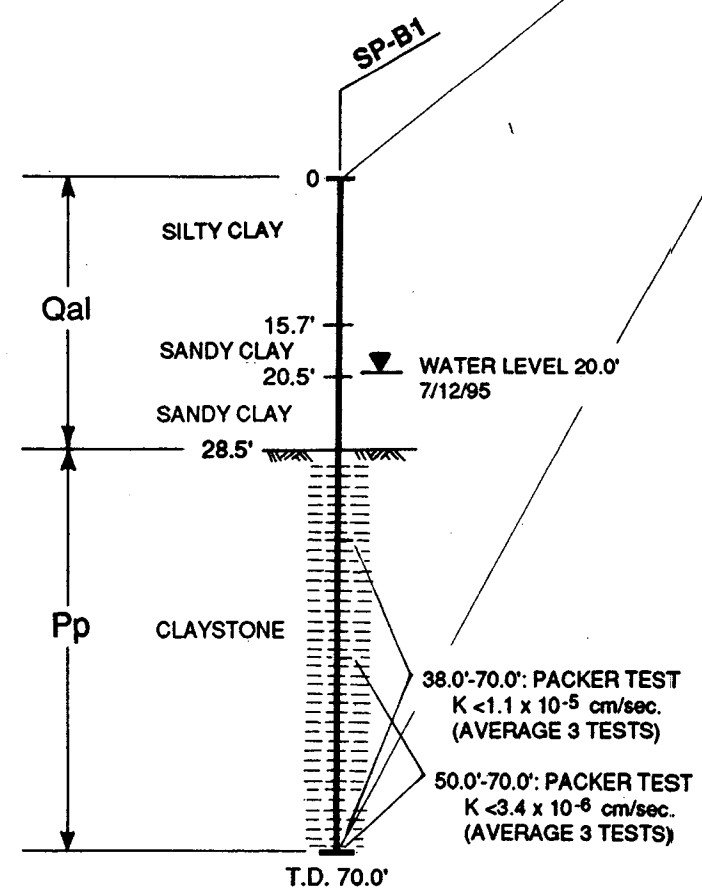


**EXPLANATION**

- Qal/Qc **ALLUVIUM/COLLUVIUM:** PREDOMINANTLY SILTY CLAY TO SANDY CLAY; INTERBEDDED WITH CLAYEY SAND; THIN LENSES OF SILTY SAND AND GRAVELLY SAND WITHIN ALLUVIUM.
- Qlso **OLD LANDSLIDE DEPOSIT:** DISTURBED PETALUMA FORMATION MATERIAL.
- Pp **PETALUMA FORMATION:** COMPRISED OF MASSIVE CLAYSTONE WITH INTERBEDDED SANDSTONE AND SILTSTONE.

- SP-B1 EXPLORATION BORING
- SP-P1 TEST PIT
- SP-SL1 SEISMIC LINE
- 5,300 fps — SEISMIC VELOCITY, FEET PER SECOND

NOTE: SEE FIGURE 4-14 FOR LOCATION OF GEOLOGIC SECTION.



**INSET LOG**

