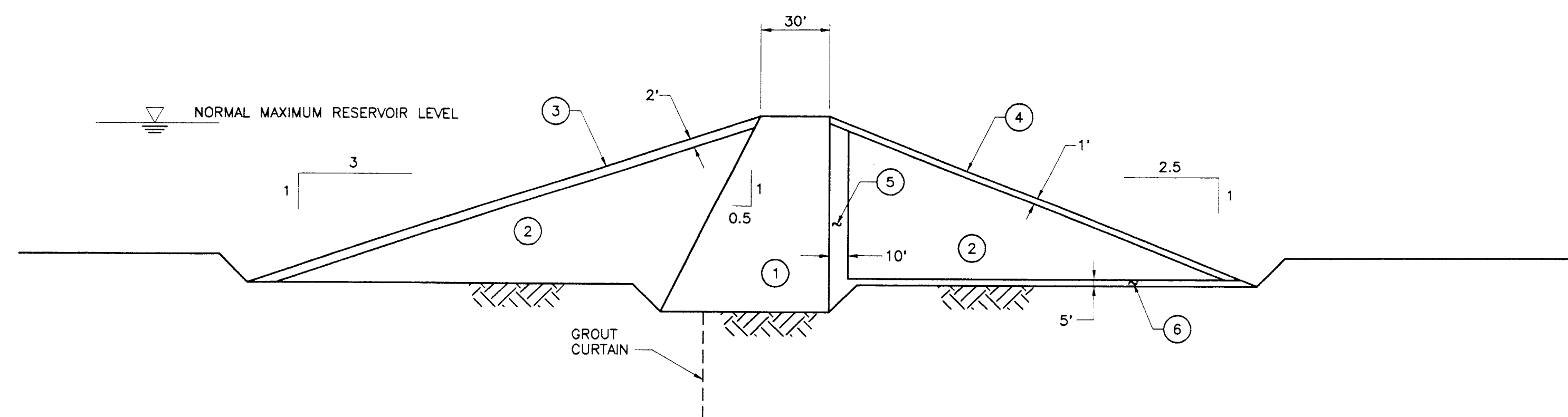
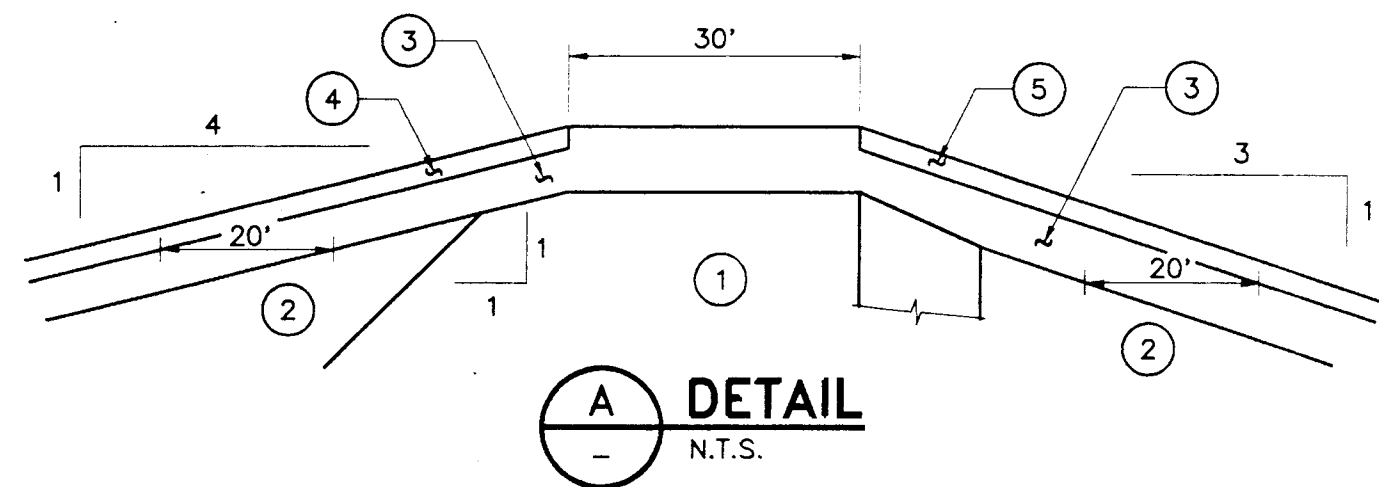


TYPICAL CROSS-SECTION
ADOBE ROAD & LAKEVILLE HILLSIDE RESERVOIRS
 N.T.S.

EMBANKMENT ZONES

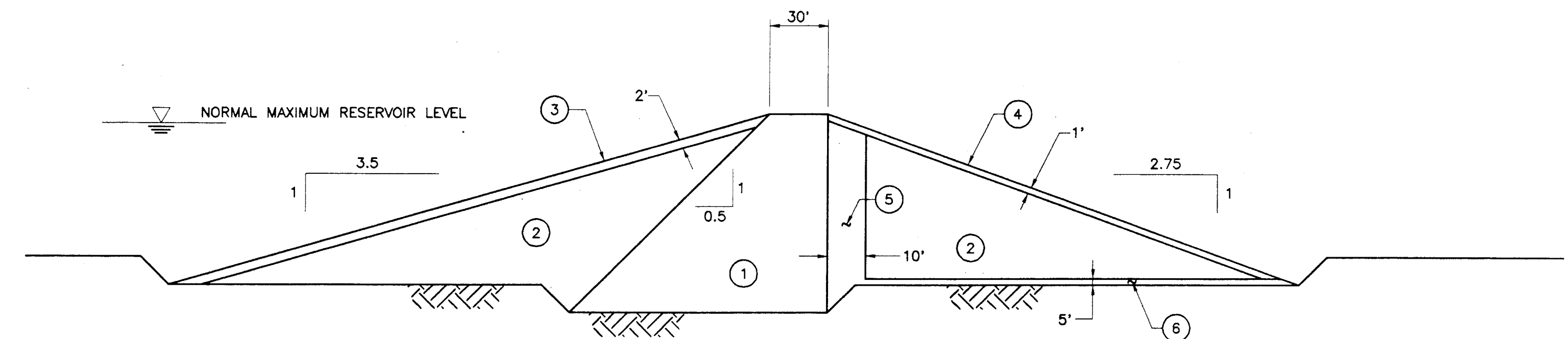
- ① IMPERVIOUS
- ② RANDOM
- ③ MOISTURE BARRIER
- ④ RIPRAP & BEDDING
- ⑤ SLOPE PROTECTION
- ⑥ CHIMNEY DRAIN
- ⑦ BLANKET DRAIN



TYPICAL CROSS-SECTION
TWO ROCK RESERVOIR
 N.T.S.

EMBANKMENT ZONES

- ① IMPERVIOUS
- ② RANDOM
- ③ RIPRAP & BEDDING
- ④ SLOPE PROTECTION
- ⑤ CHIMNEY DRAIN
- ⑥ BLANKET DRAIN



TYPICAL CROSS-SECTION
BLOOMFIELD & VALLEY FORD RESERVOIRS
 N.T.S.

EMBANKMENT ZONES

- ① IMPERVIOUS
- ② RANDOM
- ③ RIPRAP & BEDDING
- ④ SLOPE PROTECTION
- ⑤ CHIMNEY DRAIN
- ⑥ BLANKET DRAIN

NOTE:
 RESERVOIR CROSS SECTIONS PROVIDED BY
 RUST ENVIRONMENT & INFRASTRUCTURE INC.

SANTA ROSA
SUBREGIONAL LONG-TERM
WASTEWATER PROJECT

RESERVOIR TYPICAL CROSS SECTIONS

SCALE: NONE
 SHEET NO.: RES-10
 SHEET OF

HARLAND BARTHOLOMEW AND ASSOCIATES
PARSONS ENGINEERING SCIENCE
PARSONS
 OFFICES IN PRINCIPAL CITIES

PROJECT NO. 723129
 DESIGNED BY: RUST
 DRAWN BY: A. REYES
 CHECKED BY: