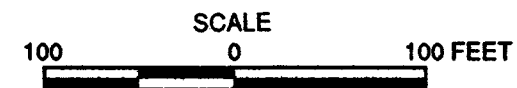


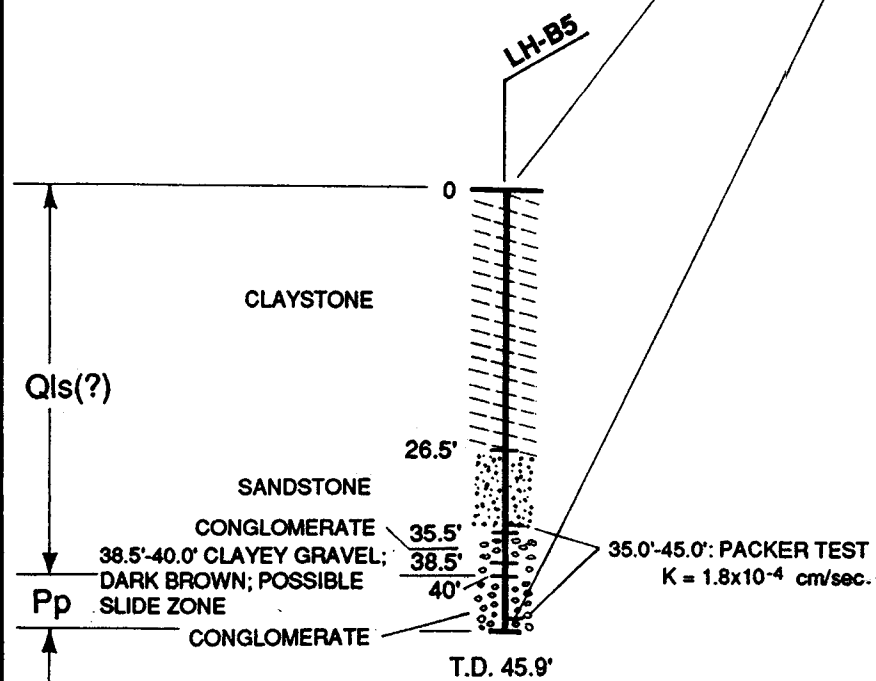
GEOLOGIC SECTION A-A' LOOKING SOUTHEAST



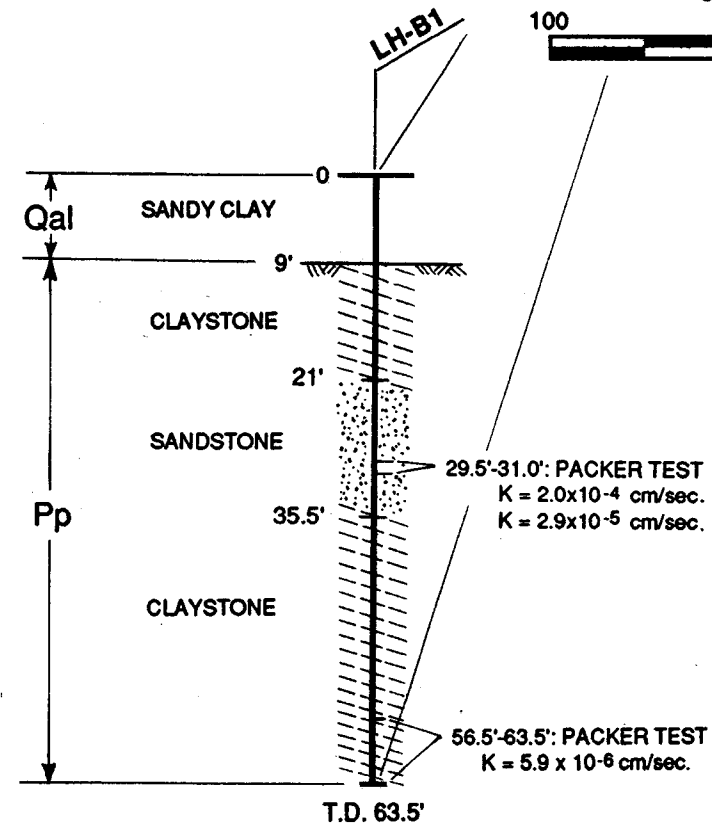
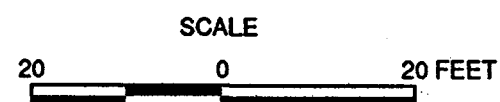
EXPLANATION

- Qal** ALLUVIUM: SANDY CLAY; INTERLAYERED CLAYEY SAND AND GRAVELLY CLAY.
- Pp** PETALUMA FORMATION: MOSTLY NON-MARINE; COMPRISED OF MASSIVE CLAYSTONE/SILTSTONE WITH LENSES OF FRIABLE SANDSTONE AND PEBBLY CONGLOMERATE.
- Qls(?)** POSSIBLE LANDSLIDE DEPOSIT: BASED ON INTERPRETATION OF EXPLORATION BORING LOG.
- LH-B5** EXPLORATION BORING

NOTE: SEE FIGURE 4-9 FOR LOCATION OF GEOLOGIC SECTION.



INSET LOG



RUST ENVIRONMENT & INFRASTRUCTURE
San Jose, California

GEOLOGIC SECTION A-A'
LAKEVILLE HILLSIDE RESERVOIR SITE
SANTA ROSA SUBREGIONAL LONG TERM
WASTEWATER PROJECT

PROJECT NO.
88230
DATE
OCTOBER 1995
FIGURE NO.
4-10