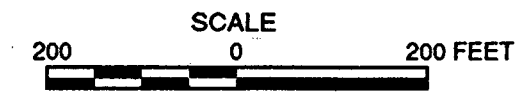


GEOLOGIC SECTION A-A' LOOKING SOUTHEAST

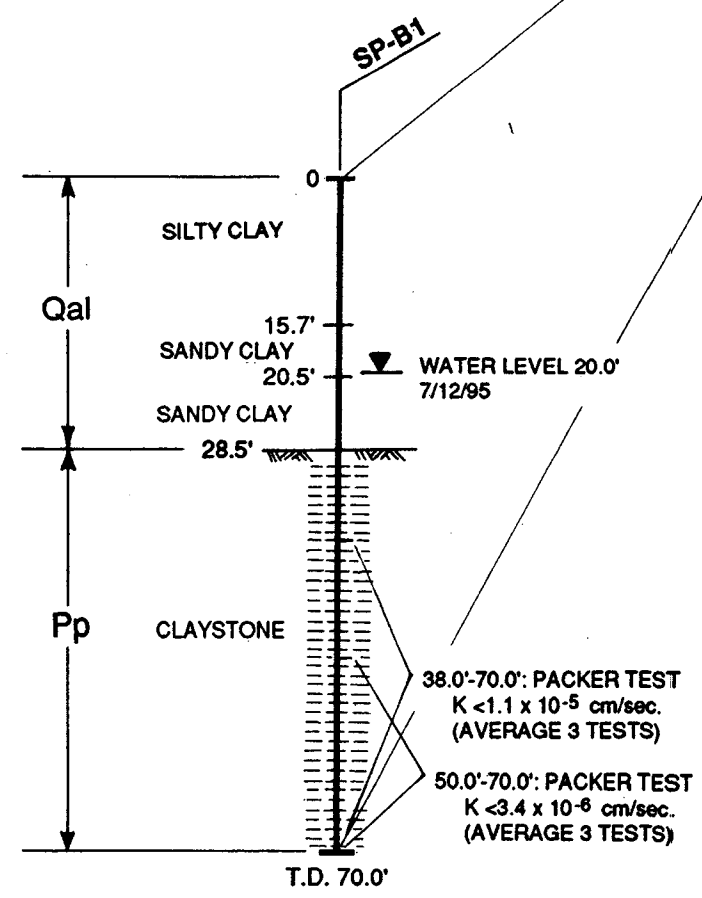


EXPLANATION

- Qal/Qc** ALLUVIUM/COLLUVIUM: PREDOMINANTLY SILTY CLAY TO SANDY CLAY; INTERBEDDED WITH CLAYEY SAND; THIN LENSES OF SILTY SAND AND GRAVELLY SAND WITHIN ALLUVIUM.
- Qlso** OLD LANDSLIDE DEPOSIT: DISTURBED PETALUMA FORMATION MATERIAL.
- Pp** PETALUMA FORMATION: COMPRISED OF MASSIVE CLAYSTONE WITH INTERBEDDED SANDSTONE AND SILTSTONE.

- SP-B1** EXPLORATION BORING
- SP-P1** TEST PIT
- SP-SL1** SEISMIC LINE
- 5,300 fps** SEISMIC VELOCITY, FEET PER SECOND

NOTE: SEE FIGURE 4-14 FOR LOCATION OF GEOLOGIC SECTION.



INSET LOG

