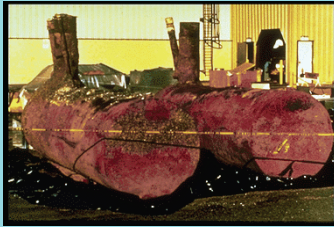


Annual Agency Status Report

July 1, 2010 through June 30, 2011 - CA Fiscal Year

The Agency Status Report has been prepared as an in-kind task as a part of the Cooperative Agreement LS-96934701-1 between U.S. Environmental Protection



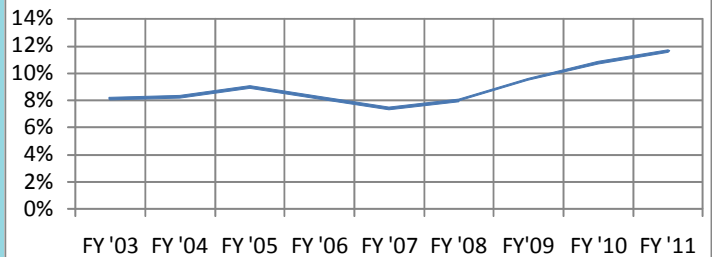
Removed formerly leaking and corroded USTs.

Agency (USEPA) Region 9 and the California State Water Resources Control Board (SWRCB). It presents GeoTracker data for the Leaking Underground Storage Tank (LUST) case closure, Electronic Submission of Information (ESI) compliance, and case age

statistics for 9 Regional Water Quality Control Boards (RWQCBs), 22 Local Oversight Programs Agencies (LOPs), and 39 Local Implementing Agencies (LIAs) through the end California Fiscal Year 2011 (FY 2011) and a comparison to previous fiscal years.

Agency Type	Cases Closed for End of FY 2011	Closure Rate for End of FY 2011
RWQCBs	542	11.9%
LOPs	491	12.5%
LIAs	89	8.1%
TOTAL	1122	11.7%

Figure 1: California Case Closure Percentage by Fiscal Year



Source: GeoTracker USEPA Report captured on 07/18/2011

Table 1: RWQCB and LOP Lead LUST Case Closure Statistics (07/01/2010-06/30/2011)

RWQCB and LOP Closure Statistics											
	Agency Name	Funding per Active Case California FY2011	CA Fiscal Year 2011			Closure Rates for Last 4 Fiscal Years				5 Year Average ('07 to '11)	Estimated Time to Close 50% of Cases at 5 Year Average (Years)†
			Active Cases as of 7-1-2010	Cases Closed	Closure Rate	FY '07	FY '08	FY '09	FY '10		
RWQCB Lead	Region 1 NORTH COAST RWQCB	\$2,503	444	33	7.4%	4.9%	3.7%	4.4%	6.9%	5.5%	12.3
	Region 2 SAN FRANCISCO BAY RWQCB	\$4,098	458	89	19.4%	5.1%	11.9%	23.0%	15.9%	15.1%	4.2
	Region 3 CENTRAL COAST RWQCB	\$2,146	307	11	3.6%	4.3%	3.6%	9.1%	5.2%	5.2%	13.1
	Region 4 LOS ANGELES RWQCB	\$2,119	1464	158	10.8%	3.8%	4.2%	6.0%	12.6%	7.5%	8.9
	Region 5 CENTRAL VALLEY RWQCB	\$2,457	1041	145	13.9%	4.8%	12.1%	8.5%	12.9%	10.5%	6.3
	Region 5F	-	327	37	11.3%	5.1%	7.7%	10.7%	13.9%	9.7%	6.8
	Region 5R	-	125	21	16.8%	7.9%	11.1%	13.1%	11.3%	12.0%	5.4
	Region 5S	-	589	87	14.8%	3.9%	14.7%	6.3%	12.6%	10.5%	6.3
	Region 6 LAHONTAN RWQCB	\$2,249	252	62	24.6%	6.6%	5.0%	9.2%	12.6%	11.6%	5.6
	Region 6T	-	178	27	15.2%	3.4%	5.0%	8.8%	15.1%	9.5%	6.9
	Region 6V	-	74	35	47.3%	15.7%	5.1%	10.7%	3.9%	16.5%	3.8
	Region 7 COLORADO RIVER BASIN RWQCB	\$2,696	147	8	5.4%	1.9%	8.6%	8.0%	11.2%	7.0%	9.5
	Region 8 SANTA ANA RWQCB	\$2,346	305	17	5.6%	5.3%	6.7%	6.1%	5.0%	5.7%	11.7
	Region 9 SAN DIEGO RWQCB	\$2,052	151	19	12.6%	16.7%	14.6%	8.3%	19.2%	14.3%	4.5
All RWQCBs	\$2,278	4569	542	11.9%	5.1%	7.7%	9.0%	11.7%	9.1%	7.3	
County LOP Lead	ALAMEDA	\$2,050	465	38	8.2%	3.7%	2.4%	4.2%	6.2%	4.9%	13.7
	EL DORADO	\$4,236	25	4	16.0%	0.0%	0.0%	10.7%	22.2%	9.8%	6.7
	HUMBOLDT	\$2,684	128	9	7.0%	10.8%	9.7%	6.9%	7.9%	8.5%	7.8
	KERN*	\$2,115	36	20	55.6%	1.3%	8.6%	17.9%	15.6%	19.8%	3.1
	MERCED	\$4,732	61	12	19.7%	4.7%	6.0%	10.1%	16.4%	11.4%	5.7
	NAPA	\$5,128	45	5	11.1%	17.6%	16.4%	11.3%	11.8%	13.6%	4.7
	NEVADA	\$5,715	23	3	13.0%	0.0%	0.0%	0.0%	7.1%	4.0%	16.8
	ORANGE	\$2,578	416	18	4.3%	5.7%	1.0%	1.4%	2.4%	3.0%	23.1
	RIVERSIDE	\$4,830	122	28	23.0%	13.5%	9.4%	15.4%	13.8%	15.0%	4.3
	SACRAMENTO	\$2,614	312	60	19.2%	7.9%	5.9%	4.9%	7.6%	9.1%	7.3
	SAN BERNARDINO*	\$10,229	12	13	108.3%	17.3%	8.3%	29.6%	26.4%	38.0%	1.5
	SAN DIEGO	\$3,512	602	53	8.8%	10.8%	10.0%	8.7%	13.6%	10.4%	6.3
	SAN FRANCISCO	\$4,157	120	40	33.3%	33.6%	29.6%	34.4%	41.4%	34.5%	1.6
	SAN JOAQUIN	\$3,738	193	20	10.4%	4.6%	6.3%	5.8%	11.8%	7.8%	8.6
	SAN MATEO	\$3,743	238	27	11.3%	7.8%	5.8%	6.5%	8.7%	8.0%	8.3
	SANTA BARBARA	\$3,231	215	19	8.8%	3.5%	6.0%	4.2%	8.5%	6.2%	10.8
	SANTA CLARA	\$2,574	307	38	12.4%	7.8%	5.5%	13.5%	11.2%	10.1%	6.5
	SOLANO	\$2,772	101	16	15.8%	8.4%	5.6%	11.0%	12.8%	10.7%	6.1
	SONOMA	\$3,530	191	26	13.6%	4.9%	9.2%	7.6%	7.7%	8.6%	7.7
	STANISLAUS	\$3,647	71	12	16.9%	4.3%	5.6%	8.4%	11.4%	9.3%	7.1
TULARE	\$1,443	110	14	12.7%	3.0%	5.3%	0.8%	8.7%	6.1%	11.0	
VENTURA	\$4,332	134	16	11.9%	16.5%	10.9%	12.4%	23.9%	15.1%	4.2	
All LOPs	\$3,186	3926	491	12.5%	8.9%	7.4%	8.8%	11.3%	9.8%	6.7	

* Notes for Table 1 are located on page 2

Annual Agency Status Report (continued)

Table 2: LIA Lead LUST Case Closure Statistics (07/01/2010-06/30/2011)

LIA CLOSURE STATISTICS									
Agency Name	CA Fiscal Year 2011			Closure Rates for Last 4 Fiscal Years				5 Year Average ('07 to '11)	Estimated Time to Close 50% of Cases at 5 Year Average (Years)†
	Active Cases as of 7-1-2010	Cases Closed	Closure Rate	FY '07	FY '08	FY '09	FY '10		
LIAs with more than 12 Active Cases									
ALAMEDA COUNTY WATER DISTRICT	148	11	7.4%	1.2%	3.6%	4.3%	5.8%	4.5%	15.1
ANAHEIM, CITY OF	27	5	18.5%	11.8%	13.0%	29.3%	10.3%	16.6%	3.8
BERKELEY, CITY OF	44	1	2.3%	2.0%	6.0%	6.4%	2.2%	3.8%	18.0
HAYWARD, CITY OF	65	18	27.7%	3.4%	2.3%	9.3%	16.3%	11.8%	5.5
LONG BEACH, CITY OF	28	3	10.7%	11.1%	11.7%	45.5%	2.7%	16.3%	3.9
LOS ANGELES COUNTY	336	22	6.5%	17.4%	14.5%	11.1%	6.5%	11.2%	5.8
LOS ANGELES, CITY OF	233	9	3.9%	5.6%	11.2%	9.1%	0.8%	6.1%	11.0
MADERA COUNTY	15	1	6.7%	8.0%	0.0%	41.7%	6.3%	12.5%	5.2
MONTEREY COUNTY	32	3	9.4%	11.5%	21.7%	55.4%	0.0%	19.6%	3.2
SAN LEANDRO, CITY OF	20	4	20.0%	0.0%	3.7%	10.7%	14.8%	9.8%	6.7
SANTA CRUZ COUNTY	22	2	9.1%	0.0%	0.0%	0.0%	10.0%	3.8%	17.8
SANTA MONICA, CITY OF	19	1	5.3%	6.9%	31.0%	9.5%	10.0%	12.5%	5.2
LIAs with Less than 12 Active Cases									
BAKERSFIELD, CITY OF	5	4	80.0%	22.2%	0.0%	0.0%	28.6%	26.2%	2.3
BURBANK, CITY OF	6	0	0.0%	14.3%	0.0%	14.3%	16.7%	9.0%	7.3
BUTTE COUNTY	9	1	11.1%	6.7%	0.0%	33.3%	0.0%	10.2%	6.4
CALAVERAS COUNTY	1	0	0.0%	100.0%	75.0%	0.0%	0.0%	35.0%	1.6
FULLERTON, CITY OF	7	0	0.0%	8.3%	0.0%	27.3%	0.0%	7.1%	9.4
GILROY, CITY OF	4	0	0.0%	0.0%	0.0%	0.0%	0.0%	0.0%	No Closures
GLENDALE, CITY OF	2	0	0.0%	33.3%	0.0%	0.0%	0.0%	6.7%	10.0
KINGS COUNTY	1	0	0.0%	NO ACTIVE CASES				N/A	No Closures
MONO COUNTY	1	0	0.0%	0.0%	50.0%	66.7%	0.0%	23.3%	2.6
ORANGE COUNTY	5	0	0.0%	37.5%	0.0%	0.0%	0.0%	7.5%	8.9
ORANGE, CITY OF	4	0	0.0%	0.0%	0.0%	0.0%	0.0%	0.0%	No Closures
PALO ALTO, CITY OF	1	0	0.0%	NO ACTIVE CASES				0.0%	No Closures
PASADENA, CITY OF	2	0	0.0%	40.0%	0.0%	0.0%	33.3%	14.7%	4.4
PLACER COUNTY	2	2	100.0%	33.3%	0.0%	50.0%	33.3%	43.3%	1.2
SAN BENITO COUNTY	4	1	25.0%	20.0%	0.0%	0.0%	0.0%	9.0%	7.3
SAN JOSE, CITY OF	2	0	0.0%	0.0%	0.0%	0.0%	0.0%	0.0%	No Closures
SAN LUIS OBISPO COUNTY	5	0	0.0%	16.7%	14.3%	28.6%	0.0%	11.9%	5.5
SAN LUIS OBISPO, CITY OF	2	0	0.0%	0.0%	0.0%	100.0%	0.0%	20.0%	3.1
SANTA ANA, CITY OF	11	0	0.0%	7.1%	0.0%	7.7%	0.0%	3.0%	23.0
SANTA FE SPRINGS, CITY OF	3	1	33.3%	25.0%	0.0%	75.0%	0.0%	26.7%	2.2
SHASTA COUNTY	2	0	0.0%	16.7%	16.7%	66.7%	0.0%	20.0%	3.1
SUTTER COUNTY	2	0	0.0%	33.3%	50.0%	0.0%	0.0%	16.7%	3.8
TORRANCE, CITY OF	5	0	0.0%	0.0%	55.6%	0.0%	0.0%	11.1%	5.9
TUOLUMNE COUNTY	7	0	0.0%	0.0%	46.2%	0.0%	0.0%	9.2%	7.2
VERNON, CITY OF	2	0	0.0%	0.0%	0.0%	50.0%	0.0%	10.0%	6.6
YUBA COUNTY	11	0	0.0%	14.3%	8.3%	0.0%	0.0%	4.5%	15.0
ALL LIAs‡	1095	89	8.1%	10.3%	11.5%	14.6%	5.8%	10.1%	6.5

† Calculated using the formula $\text{Log}_{1-r}(.5)$, where r is the 5 year closure rate average for the agency;

* Agency ceased being an LOP effective 7/1/2011

‡ Does not include DTSC, USEPA, Department of Public Health or any LIAs with no active cases in the last 5 fiscal years;

Note 1: Target annual closure rate is 7% or higher; Note 2: Active cases do not include new cases or cases re-opened during the period; Note 3: Because GeoTracker reports do not keep track of historical case assignments, the values presented here for "Active Cases as of 7-1-2010" may vary from previous reports due to back-dated closures, case reassignments, and deletions;

Source: Number of active cases and cases closed were compiled from the GeoTracker Advanced Case Reporting Tool on 07/18/2011.

Annual Agency Status Report (continued)

Figure 2: California Monthly Closures for FY 2009, FY 2010, and FY 2011.

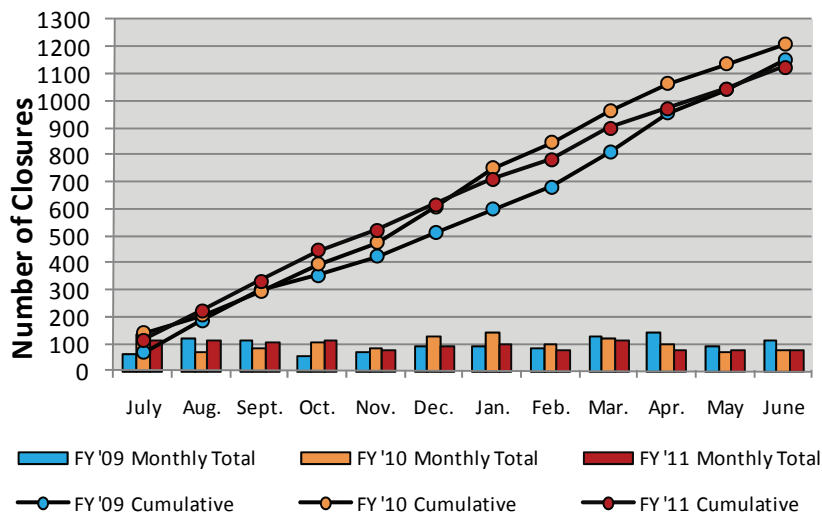
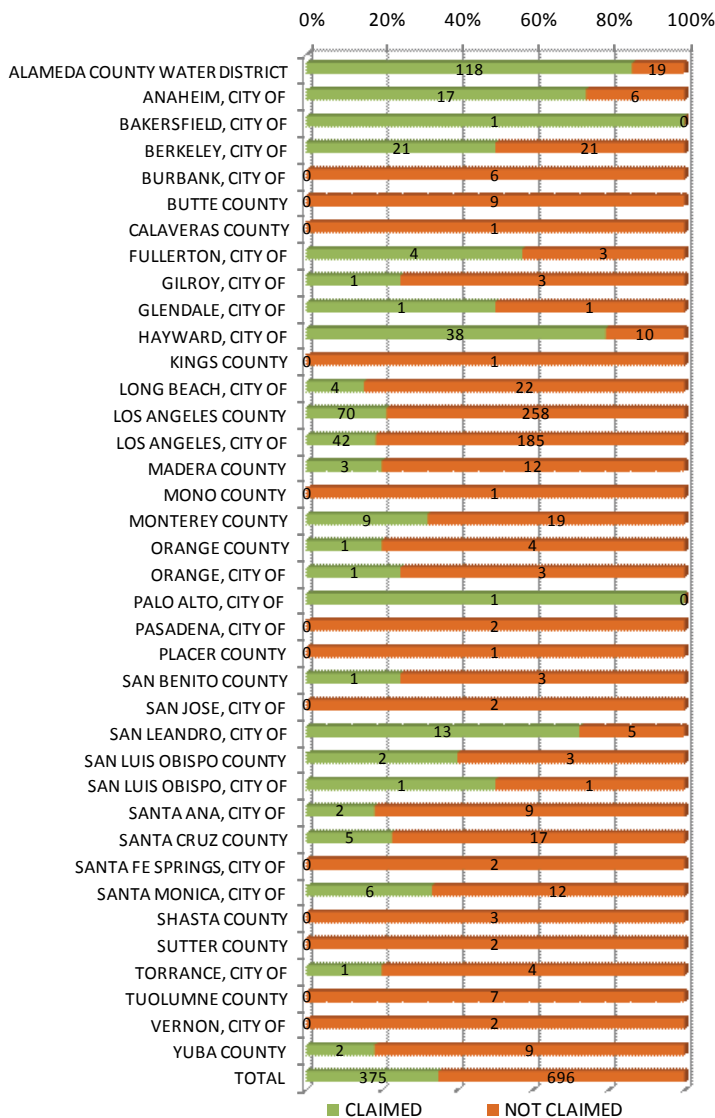


Figure 3: LIA ESI Compliance Statistics at End of FY 2011



Statistics for Active LUST Cases

Figure 4: RWQCB ESI Compliance Statistics at End of FY 2011

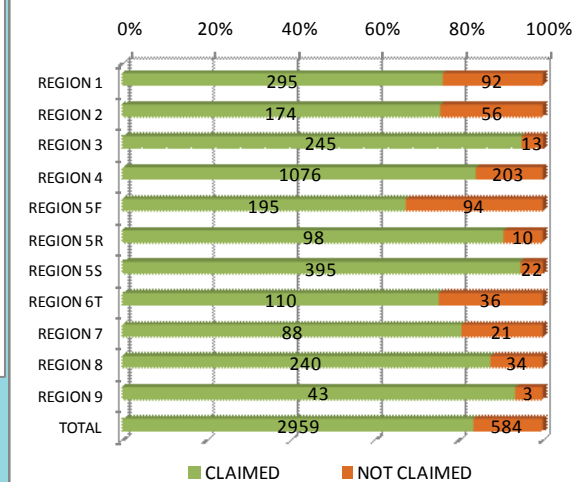
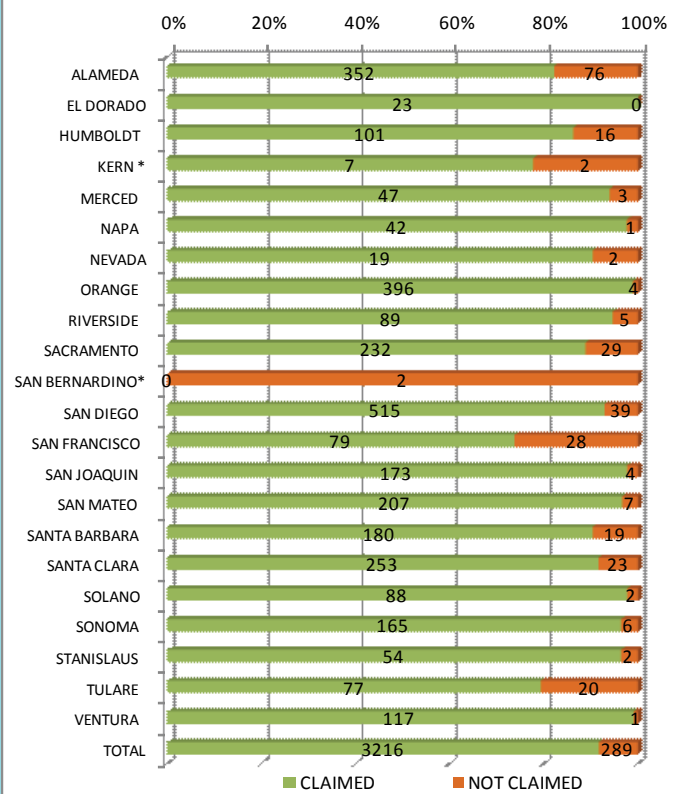


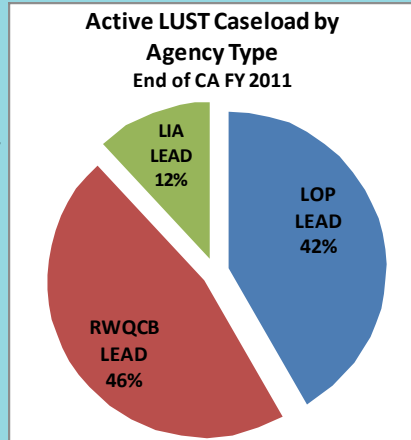
Figure 5: LOP ESI Compliance Statistics at End of FY 2011



* Agency ceased to be an LOP effective 07/01/2011; Note 1: Military UST cases are not included; Note 2: DTSC, USEPA, or LIAs with no active cases are not included in Figure 3; Source: GeoTracker ESI Compliance Report dated 07/18/2011 for LUST Cleanup Sites

Annual Agency Status Report (continued)

Figure 6: Distribution of Total Active LUST Cases in California by Agency



Case Age Statistics for Active LUST Cases

Table 4: Percentage of Aging Cases for RWQCBs

Regional Boards			
Agency Name	Total Number of Active cases on 6/30/2011	Percentage of Active Cases Open 10 to 15 Years	Percentage of Active Cases Open More than 15 Years
REGION 1	414	24.2%	36.7%
REGION 2	392	16.8%	38.8%
REGION 3	298	24.5%	41.3%
REGION 4	1316	23.2%	49.9%
REGION 5 (ALL)	909	24.2%	41.9%
REGION 5F	300	23.0%	44.3%
REGION 5R	108	40.7%	61.1%
REGION 5S	501	21.4%	36.3%
REGION 6 (ALL)	206	21.4%	38.3%
REGION 6T	152	27.6%	42.8%
REGION 6V	54	3.7%	25.9%
REGION 7	145	21.4%	36.6%
REGION 8	291	24.1%	38.8%
REGION 9	141	20.6%	38.3%
ALL REGIONS	4112	22.8%	42.9%

Table 3: Percentage of Aging Cases for LIAs

LIAs			
Agency Name	Total Number of Active cases on 06/30/2011	Percentage of Active Cases Open 10 to 15 Years	Percentage of Active Cases Open More than 15 Years
ALAMEDA COUNTY WATER DISTRICT	137	11.7%	19.0%
ANAHEIM, CITY OF	23	30.4%	65.2%
BAKERSFIELD, CITY OF	1	100.0%	100.0%
BERKELEY, CITY OF	44	4.5%	15.9%
BURBANK, CITY OF	6	33.3%	50.0%
BUTTE COUNTY	9	44.4%	66.7%
CALAVERAS COUNTY	1	0.0%	0.0%
FULLERTON, CITY OF	7	42.9%	71.4%
GILROY, CITY OF	4	25.0%	50.0%
GLENDALE, CITY OF	2	50.0%	50.0%
HAYWARD, CITY OF	48	6.3%	25.0%
KINGS COUNTY	1	0.0%	100.0%
LONG BEACH, CITY OF	26	19.2%	57.7%
LOS ANGELES COUNTY	327	32.1%	81.3%
LOS ANGELES, CITY OF	227	22.0%	41.9%
MADERA COUNTY	15	26.7%	26.7%
MONO COUNTY	1	0.0%	0.0%
MONTEREY COUNTY	31	19.4%	38.7%
ORANGE COUNTY	5	0.0%	0.0%
ORANGE, CITY OF	4	25.0%	25.0%
PALO ALTO, CITY OF	1	0.0%	100.0%
PASADENA, CITY OF	2	0.0%	0.0%
PLACER COUNTY	1	0.0%	100.0%
SAN BENITO COUNTY	4	0.0%	0.0%
SAN JOSE, CITY OF	2	0.0%	0.0%
SAN LEANDRO, CITY OF	18	27.8%	55.6%
SAN LUIS OBISPO COUNTY	5	20.0%	80.0%
SAN LUIS OBISPO, CITY OF	2	0.0%	50.0%
SANTA ANA, CITY OF	11	54.5%	63.6%
SANTA CRUZ COUNTY	22	9.1%	27.3%
SANTA FE SPRINGS, CITY OF	2	0.0%	100.0%
SANTA MONICA, CITY OF	18	16.7%	44.4%
SHASTA COUNTY	3	0.0%	66.7%
SUTTER COUNTY	2	0.0%	0.0%
TORRANCE, CITY OF	5	0.0%	0.0%
TUOLUMNE COUNTY	7	14.3%	14.3%
VERNON, CITY OF	2	0.0%	100.0%
YUBA COUNTY	11	9.1%	18.2%
ALL LIAs ‡	1039	22.1%	50.1%

Table 5: Percentage of Aging Cases for County LOPs

Agency Name	Total Number of Active cases on 6/30/2011	Percentage of Active Cases Open 10 to 15 Years	Percentage of Active Cases Open More than 15 Years
ALAMEDA	428	14.7%	28.7%
EL DORADO	23	39.1%	69.6%
HUMBOLDT	117	21.4%	39.3%
KERN *	17	17.6%	35.3%
MERCED	50	30.0%	56.0%
NAPA	43	18.6%	32.6%
NEVADA	21	33.3%	42.9%
ORANGE	400	24.5%	38.8%
RIVERSIDE	94	30.9%	71.3%
SACRAMENTO	260	35.0%	58.1%
SAN BERNARDINO *	2	0.0%	100.0%
SAN DIEGO	561	26.7%	52.4%
SAN FRANCISCO	107	18.7%	43.0%
SAN JOAQUIN	177	19.2%	29.9%
SAN MATEO	214	17.8%	34.6%
SANTA BARBARA	199	19.6%	38.2%
SANTA CLARA	277	12.3%	28.9%
SOLANO	90	12.2%	41.1%
SONOMA	171	14.6%	29.8%
STANISLAUS	56	37.5%	53.6%
TULARE	97	39.2%	48.5%
VENTURA	118	11.0%	32.2%
ALL LOPs	3520	21.9%	40.9%

* Agency ceased to be an LOP effective 07/01/2011;
 ‡ Does not include DTSC, USEPA, Department of Public Health, or any LIAs with no active cases in the last 5 fiscal years; Note 1: Reopened cases are counted from their original release date; Note 2: Where an accurate release date was not available, the age of the case was calculated from the GeoTracker Report Date; Source: GeoTracker USEPA Report captured on 07/18/2011