



# California Underground Storage Tank Program

---

## AB2886 Electronic Reporting

August 13, 2001

Anne M. Happel, Ph.D.

EcoInteractive, Inc

[ahappel@ecointeractive.com](mailto:ahappel@ecointeractive.com)



# What Type of Data Must Be Electronically Reported?

---

## AB2886 Electronic Data Deliverables

Begins September 1, 2001

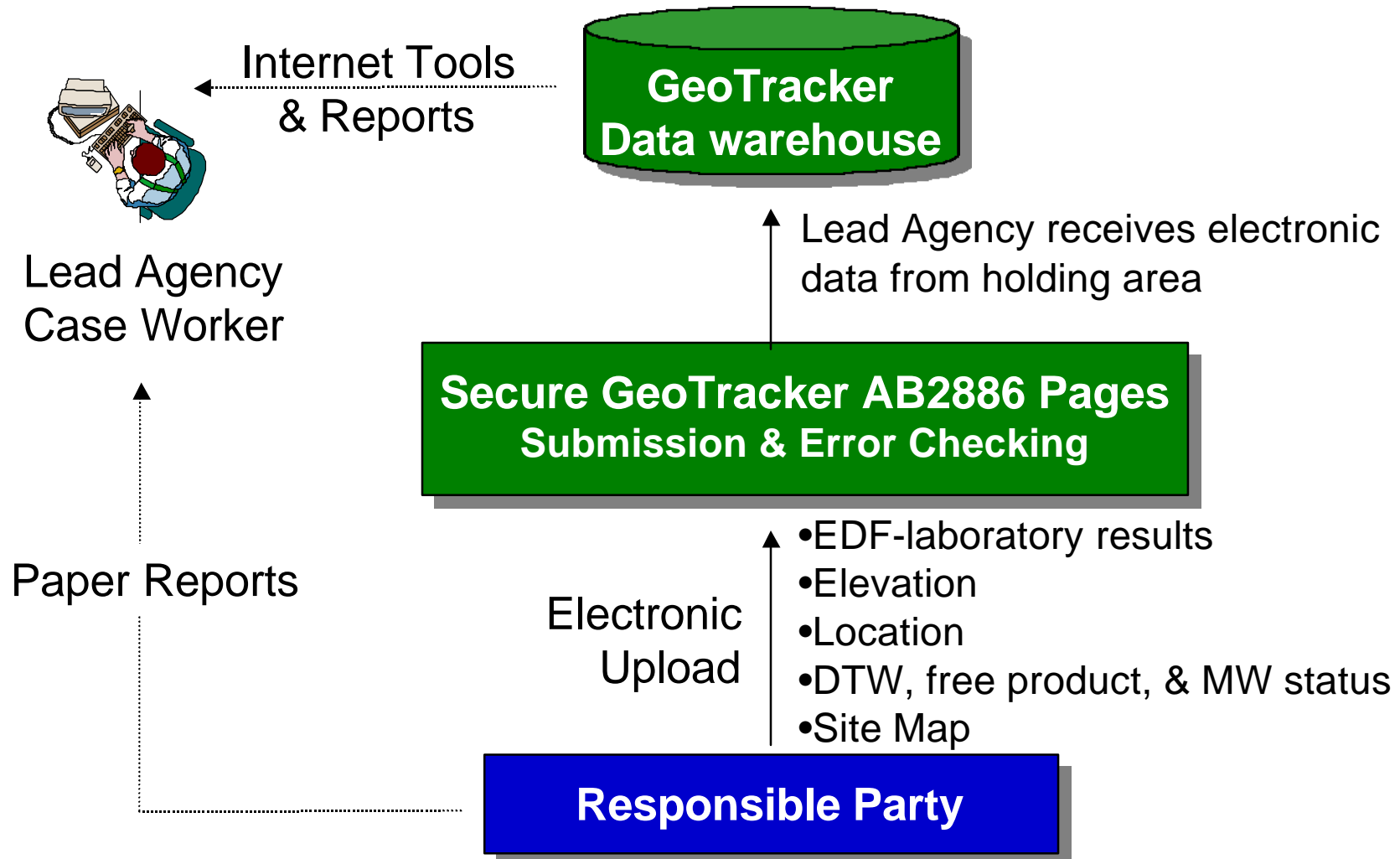
- Laboratory Soil and Groundwater Sample Results

Begins January 1, 2002

- Sample Locations (latitude/longitude)
- Monitoring Well Elevation Data
- Groundwater Well Data (DTW, free product & status)
- Site Map



# AB2886 Data Flow

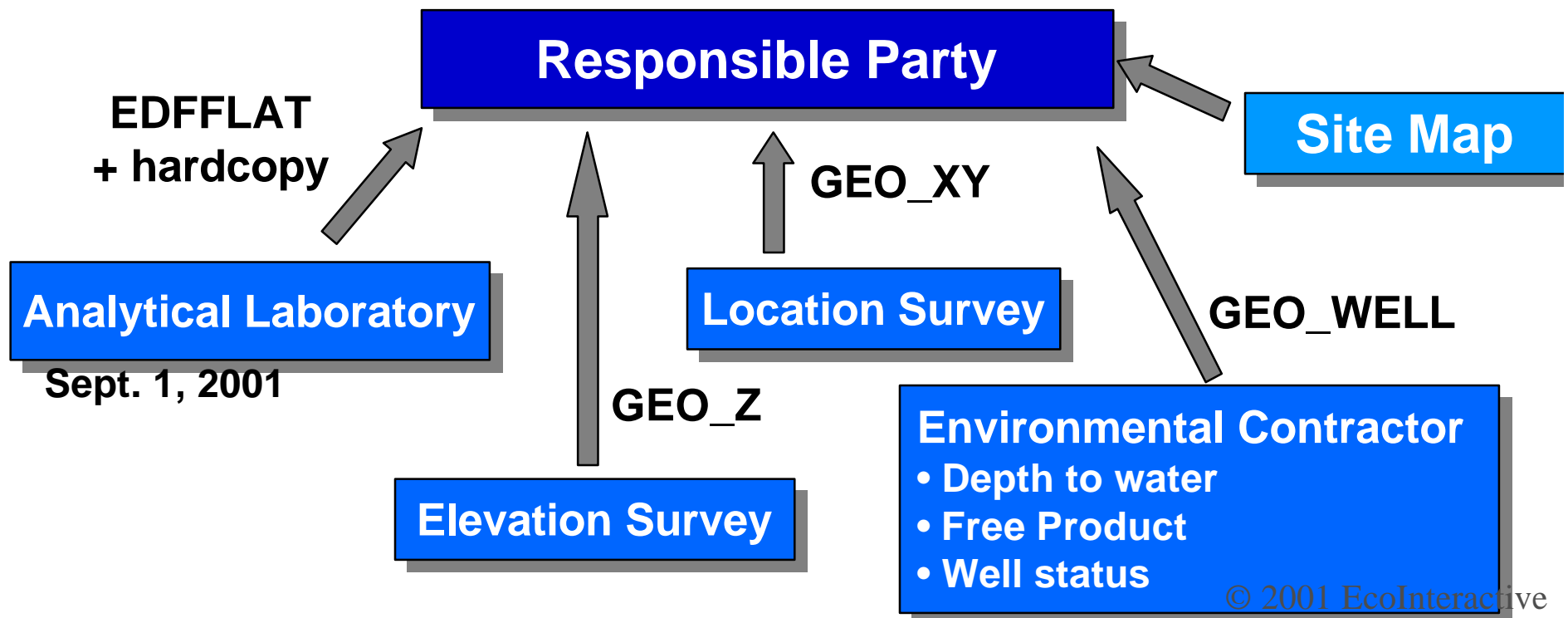




# Potential RP Data Flow

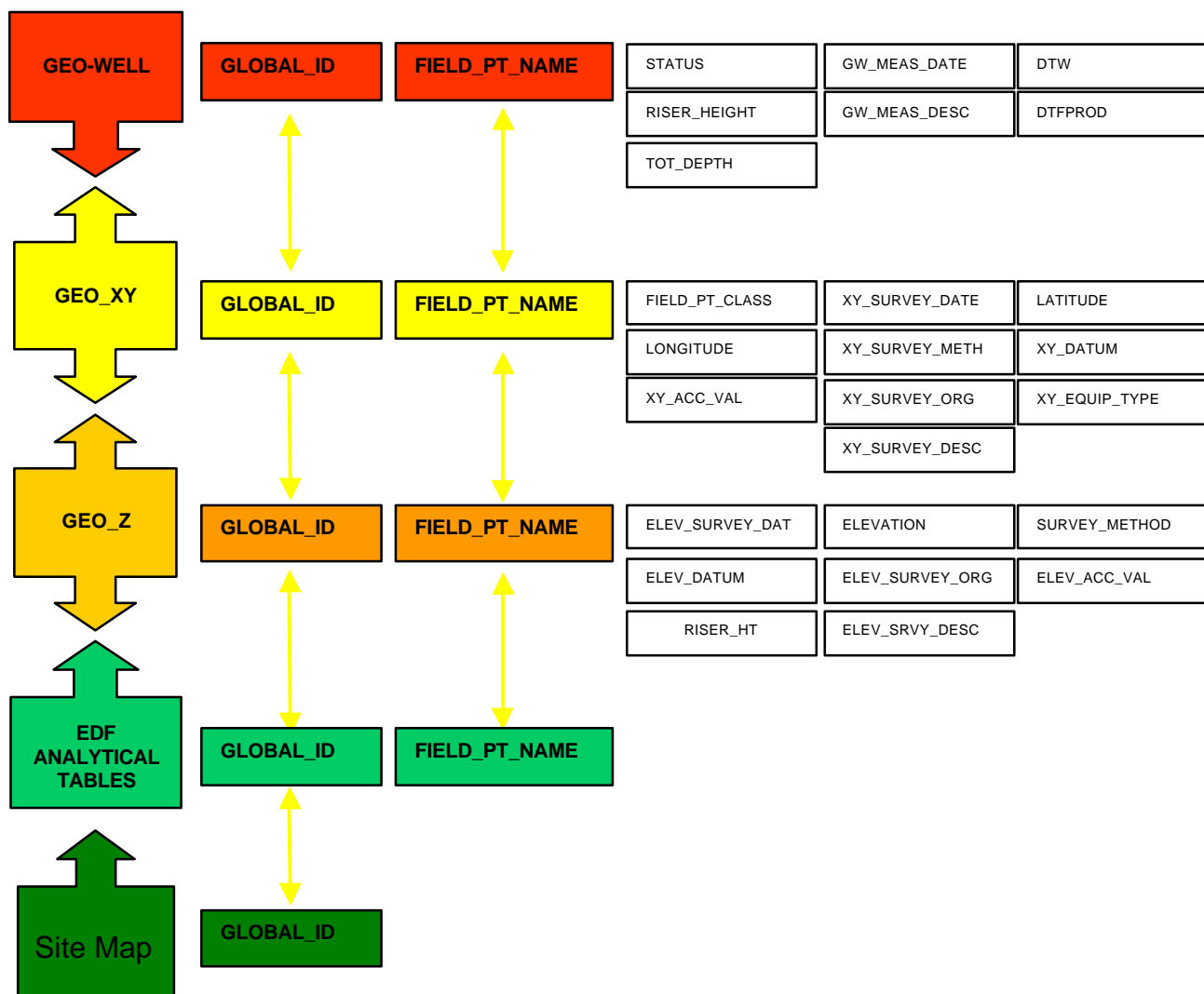
- Submit EDD to GeoTracker
- Submit report to lead agency

- Prepare hard copy report
- Data Interpretation





# GeoTracker EDD Relational Files





# Electronic Reporting of Analytical Laboratory Data

---

Begins September 1, 2001



# What Laboratory Data Is Required?

---

- Soil
- Groundwater

For all UST samples



# Laboratory Sample Results- What is EDF?

---

- A way to transfer laboratory and field information electronically
- The electronic version of a laboratory report
- Includes:
  - Chain-of custody information
  - Laboratory results
  - Quality assurance information



# Examples of EDF Contents

---

## Analytical Results

- Laboratory Ids
- Analysis Date
- Preparation batch
- Results

## QA/QC data

- Control Limits
- Surrogates
- Blanks
- Spikes

## Chain-of-Custody Data

- Global ID
- Field Point Name
- Sample Ids
- Collection Date/Time
- Preservation



# How Laboratories Produce and Reporting EDF Data

---

- Laboratory exports data from their LIMS
- Data is converted into EDF1.2i upload format with
  - Laboratory LIMS software tools
  - COELT software provided by EDF Program
- EDD is verified with error checking tools
  - GeoTracker web tool
  - EDCC software provided by EDF Program
- Electronic EDF data is transferred to client with hard copy report



# EDCC Error Checking Program

---

## Format Errors

- Fields submitted in incorrect order
- Incorrect valid values

## Logic Errors, such as...

- Analysis date prior to sample date
- Test without results

## Content Errors

- Detection limits greater than reporting limits



# Available Support For EDF

---

- Guidelines & Restrictions- Documentation
- Laboratory Training- Ten (3-day) sessions state-wide
- Desktop Software Tools:
  - COELT- COE Loading Tool
  - EDCC- Electronic Deliverable Consistency Checker (also GeoTracker web version)
- Help Desk Support 1-800-506-3887



# Electronic Reporting of LUST Sampling Locations

---

Begins January 1, 2002

GeoTracker Help

1 800 506 9118

[geotrackerhelp@ecointeractive.com](mailto:geotrackerhelp@ecointeractive.com)



# Location Data

---

- Requires Survey Quality Locations
- Sub-meter accuracy-  
Latitude/Longitude (decimal degrees, HPGN NAD83)
- State Business and Professions Code Sec. 8726 8726 (a, b, f, m), Sec. 6731.1 (a, b, c)
- Requires submission of metadata  
Survey XY\_Z Restriction & Guidelines



# Location Survey Methods

---

- Use of survey quality GPS technology
  - Do not use Mapping grade 1 to 5 meter GPS units
  - Do not use recreational/navigational GPS units
- Classical Survey Techniques combined with HPGN reference points
  - Triangulation
  - Traverse (Federal Geodetic Control Subcom. 3<sup>rd</sup> order)
  - Trilateration
- Classical Survey Techniques combined with GPS



# Electronic Reporting of Elevation Data

---

Begins January 1, 2002



# Elevation Data Potential Issues

---

- Requires
  - Measured elevation to top of well casing
  - Measure riser height (for new surveys)
- Use of licensed surveyor required
- Requires submission of metadata
  - Survey XY\_Z Restriction & Guidelines



# Elevation Survey Methods

---

- Digital differential leveling
- Differential leveling (NON-digital)
- Differential leveling using HPGN GPS vertical reference points
  - $\geq 3$  surrounding reference points



# How to Find a Surveyor

---

[http://www.dca.ca.gov/pels/l\\_lookup.htm](http://www.dca.ca.gov/pels/l_lookup.htm)



# Get Ready For Electronic Reporting

---

- Verify that your analytical lab can produce EDF
  - Review/modify your laboratory contracts
  - Test your lab's EDF format by using the desktop EDCC application from SWRCB AB2886 web site
- Plan ahead for location and elevation data
- Check GeoTracker "AB2886" link for new documents and information



<http://geotracker.swrcb.ca.gov/>

A screenshot of the GeoTracker website interface. The left sidebar contains search fields for 'Map Address' (with sub-fields for Address, City, and Zip), a 'Regional Map' field for County, and a 'Map It' button. The main content area features a map background with the 'GeoTracker' logo and tagline 'Your link to environmental data for regulated facilities in California'. Below this are two columns of links: 'TOOLS' (Site/Facility Finder, Well Concentrations, Case Finder, MTBE/Case Reports, GeoTracker Demo, GeoTracker) and 'INFORMATION' (About GeoTracker, Hot News, Drinking Water Quality, MTBE Reports, Subsurface Investigations, AB2886). The 'AB2886' link is highlighted with a red box. At the bottom are links for 'Contact Us', 'SWRCB', and 'GeoTracker'.



# GeoTracker Electronic Reporting Tools

---

Security, Error-checking, Internet  
EDD Submission



# Security Identification

---

- Responsible parties will need to obtain a password to submit data
- RPs can request a password on-line

**To access or modify your sites, please enter your username and password below:**

Username:

Password:

Login

If you do not have a username and password, request one using our [Password Request](#) page.



# On-line Password Request

**AB2886 Electronic Delivery**  
[Main Menu](#) | [Request Facility](#) | [View Associated Facilities](#)

**Requesting a Password**  
Step 1: Submit Contact Information

User Information:  
User Type:  Username:  Password:

Contact Information:  
Name:   
Address:   
City:  State:  Zip:   
Phone Number: (XXX-XXX-XXXX)  Email Address:   
Comments/Questions:

**AB2886 Electronic Delivery**  
[Main Menu](#) | [Request Facility](#) | [View Associated Facilities](#)

- User name required.
- Password required.
- Name required.
- Street address required.
- City required.
- State required.
- Zip code required.
- User type required.
- Phone number not in required format (###-###-####).
- Proper email address.

**Requesting a Password**  
Step 1: Submit Contact Information

User Information:  
User Type:  Username:  Password:

Contact Information:  
Name:



# Permission for Consultants to Submit Data

---

RP or authorized consultant

Obtains Password



Request Facilities



Assigns Consultants

Site 1

- Consultant 1
- Consultant 2
- Consultant 3

Site 2

- Consultant 1
- Consultant 2
- Consultant 5

Site 3

- Consultant 1
- Consultant 4
- Consultant 5



# Responsible Party Electronic Reporting Interface

1. Request/view LUST sites associated with RP
2. Find GeoTracker LUST site and well Ids
  - Use error checking tools & get error reports
  - Upload/submit EDDs

**AB2886 Electronic Delivery**  
[Main Menu](#) | [Request Facility](#) | [View Associated Facilities](#)

<b>View/Add Facilities</b> <a href="#">Request Additional Facilities</a> <a href="#">View Associated Facilities</a>	<b>Find GeoTracker ID's</b> <a href="#">LUST Sites</a> <a href="#">Sampling Points</a>
<b>Upload EDDs</b> <a href="#">GEO XY</a> <a href="#">GEO Z</a> <a href="#">EDFFLAT</a> <a href="#">GEO WELL</a>	<b>Error Check EDDs</b> <a href="#">GEO XY</a> <a href="#">GEO Z</a> <a href="#">EDFFLAT</a> <a href="#">GEO WELL</a>

Logged in as Joe Smith.



# RPs Request Permission to Submit EDD for Sites

**AB2886 Electronic Delivery**  
[Main Menu](#) | [Request Facility](#) | [View Associated Facilities](#)

**Search for a Facility Below:**

**Facility Name**  
chevron

**Street Name**

**City**

**Search For Facility**



**AB2886 Electronic Delivery**  
[Main Menu](#) | [Request Facility](#) | [View Associated Facilities](#)

**Select the Facilities You Wish to Request:**

<u>Add</u>	<u>Facility Name</u>	<u>Address</u>	<u>City</u>
<input type="checkbox"/>	CHEVRON	1805 YGNACIO VALLEY RD	WALNUT CREEK
<input type="checkbox"/>	CHEVRON	699 YGNACIO VALLEY RD	WALNUT CREEK
<input type="checkbox"/>	CHEVRON	1490 WINTON AVE W	HAYWARD
<input type="checkbox"/>	CHEVRON	2950 WOODSIDE RD	WOODSIDE
<input type="checkbox"/>	CHEVRON	710 WOODSIDE RD	REDWOOD CITY
<input type="checkbox"/>	CHEVRON	3400 WILLOW PASS RD	CONCORD
<input type="checkbox"/>	CHEVRON	2380 WILLOW PASS RD	CONCORD
<input type="checkbox"/>	CHEVRON	2001 WILLOW PASS RD	CONCORD
<input type="checkbox"/>	CHEVRON	3405 WINCHESTER BLVD S	CAMPBELL
<input type="checkbox"/>	CHEVRON	1301 WINCHESTER BLVD S	SAN JOSE
<input type="checkbox"/>	CHEVRON	585 WHIPPLE AVE	REDWOOD CITY
<input type="checkbox"/>	CHEVRON	600 WHIPPLE AVE	REDWOOD CITY
<input type="checkbox"/>	CHEVRON	1790 WHIPPLE RD	UNION CITY
<input type="checkbox"/>	CHEVRON	2801 WHITE RD S	SAN JOSE
<input type="checkbox"/>	CHEVRON	1440 WASHINGTON ST E	PETALUMA
<input type="checkbox"/>	CHEVRON	1802 WEBSTER ST	ALAMEDA
<input type="checkbox"/>	CHEVRON	990 VETERANS BLVD	REDWOOD CITY
<input type="checkbox"/>	CHEVRON	9401 VILLAGE PKWY	SAN RAMON

Logged in as Joe Smith.



# Obtain Global IDs and Sampling Point Names

**AB2886 Electronic Delivery**  
[Main Menu](#) | [Request Facility](#) | [View Associated Facilities](#)

<b>View/Add Facilities</b> <a href="#">Request Additional Facilities</a> <a href="#">View Associated Facilities</a>	<b>Find GeoTracker ID's</b> <div><a href="#">LUST Sites</a></div> <a href="#">Sampling Points</a>
<b>Upload EDDs</b> <a href="#">GEO XY</a> <a href="#">GEO Z</a> <a href="#">EDFFLAT</a> <a href="#">GEO WELL</a>	<b>Error Check EDDs</b> <a href="#">GEO XY</a> <a href="#">GEO Z</a> <a href="#">EDFFLAT</a> <a href="#">GEO WELL</a>

Download Global IDs only for Sites associated with a RP's password

Logged in as Joe Smith.



# Upload Sampling Point Names

**AB2886 Electronic Delivery**  
[Main Menu](#) | [Request Facility](#) | [View Associated Facilities](#)

**View/Add Facilities**  
[Request Additional Facilities](#)  
[View Associated Facilities](#)

**Find GeoTracker ID's**  
[LUST Sites](#)  
[Sampling Points](#)

**Upload EDDs**  
[GEO XY](#)  
[GEO Z](#)  
[EDFFLAT](#)  
[GEO WELL](#)

**Error Check EDD**  
[GEO XY](#)  
[GEO Z](#)  
[EDFFLAT](#)  
[GEO WELL](#)

Logged in as Joe Smith.

Global ID	Field Pt Name	Facility ID
122446	MW-01	C366
122446	MW-02	C366
213356	MW-01	CR112



# Error Check Before Submission

- The “browse” button will let you choose a file from your computer
- The “import” button will submit the file to error checking program
- Dynamic error check reports will be returned

**Check EDFFLAT**  
Import Step 1: Locate the Data File

Select the file by using the "Browse" button below. The file must follow the [uploaded file format guidelines](#). **Be aware, this is not an upload and will NOT be considered a submission to the SWRCB.**

Find File:



# Uploading Data For Submission

- The “browse” button will let you choose a file from your computer
- The “import” button will submit the file to the SWRCB
- All data will be “error checked” and data must pass the error check to be submitted
- Confirmation number will be returned

**Importing EDFLAT**  
Import Step 1: Select Site Data Files


Select the EDF file by using the "Browse" button below. The uploaded file must follow the [uploaded file format guidelines](#). **Be aware, uploading an EDF file will be considered a submission to the SWRCB.**

Location/Substance File:

**Success!**  
The Procedure Was Successful

There were no errors in your data! Data successfully processed.

Click [here](#) to go back to the main menu.





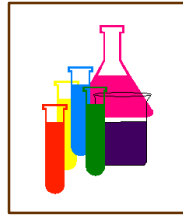
# What Is the GeoTracker Solution?

---

A data warehouse that integrates data across environmental programs via the internet

- Is the choice of the SWRCB to manage the MTBE problem
- Provides public access and supports business-to-government transactions
- Facilitates decentralized data management-lead agencies “own” and manage their data
- Simplifies data exchange and improves data quality

## Electronic Reporting



Analytical Data

On-line permitting & compliance reporting



Environmental Contractors

## Regulatory Tracking & GIS Coverages

Government Agencies



- State
- Local
- Federal

**GeoTracker**

- Data warehouse
- Integration Hub
- Data Exchange Center
- Seamless GIS interface

## Decision Support

- Financial
- Technical
- Regulatory

Public Access



# Integrated Access

**UNDERGROUND STORAGE TANK UNAUTHORIZED RELEASE / CONTAMINATION SITE REPORT**

REPORT DATE: (MM/DD/YYYY)

HAZARDOUS MATERIAL INCIDENT REPORT FILED WITH OES? :

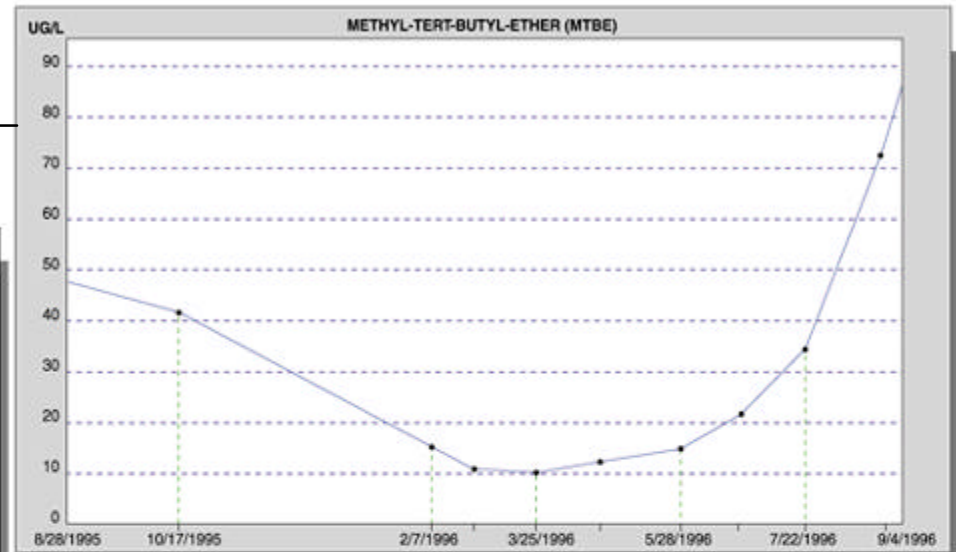
I, REPORTED BY  
REPORTING INDIVIDUAL: (First and Last Name)   
PHONE: (###-###-####)   
FAX: (###-###-####)   
EMAIL:

REPORTING INDIVIDUAL TYPE: (select all that apply - hold down ctrl to select multiple)  
☐ Business Owner  
☐ Owner-Agent  
☐ Operator  
☐ Tank Owner  
☐ Fee Title/Property Owner  
☐ Local Agency

ORGANIZATION NAME:

MAILING ADDRESS:  
STREET ADDRESS:   
APT/SUITE/  
BUILDING #:  CITY:  STATE:  ZIP:

- ◆ Database integration
- ◆ Optimized web performance
- ◆ On-line permitting and public reporting
- ◆ Download data from the web
- ◆ On-line analysis & GIS tools
- ◆ Tools to position facilities on-line
- ◆ On-line reports and database edit screens



## Leaking Underground Fuel Tank Report for:

**GAS STATION**  
1000 MAIN BLVD  
SAN MILLER, CA 97944

Site Info: ([regulatory history](#)) | ([locational information](#)) | ([detailed site info](#))

Regional Board:	LOS ANGELES RWQCB (REGION 4)
Local Agency (lead agency):	SAN MILLER LOCAL AGENCY

Leak Info: ([more detailed release information](#))

Substance Released:	GASOLINE
Remediation on site:	

4 Public Water Well(s) Estimated to be Within 1/2 Mile: ([detailed well info](#))

[Show this Site on Map](#)



# Internet Access to Site Data

## Leaking Underground Fuel Tank Report

### ROTTEN ROBBIE (SOUTH LAKE TAHOE)

2601 LAKE TAHOE BLVD.  
SOUTH LAKE TAHOE, CA 96150  
([Show this Site on Map](#))

### Regional Board (lead agency)

LAHONTAN RWQCB (REGION 6T)

### Local Agency

EL DORADO DEPT. OF ENV. HEALTH MANAGEMEN

## Choose a Report To View

### Site Info:

- [Regulatory History](#)
- [Locational Information](#)
- [Analytical Data](#)

### Leak Info:

- [Detailed Release Information](#)
- [Remediation on Site](#)

### Additional Info:

- [10 Monitoring Wells For This LUFT Site](#)
- [11 Public Water Well\(s\) Estimated to be Within 1/2 Mile of this LUFT Site](#)

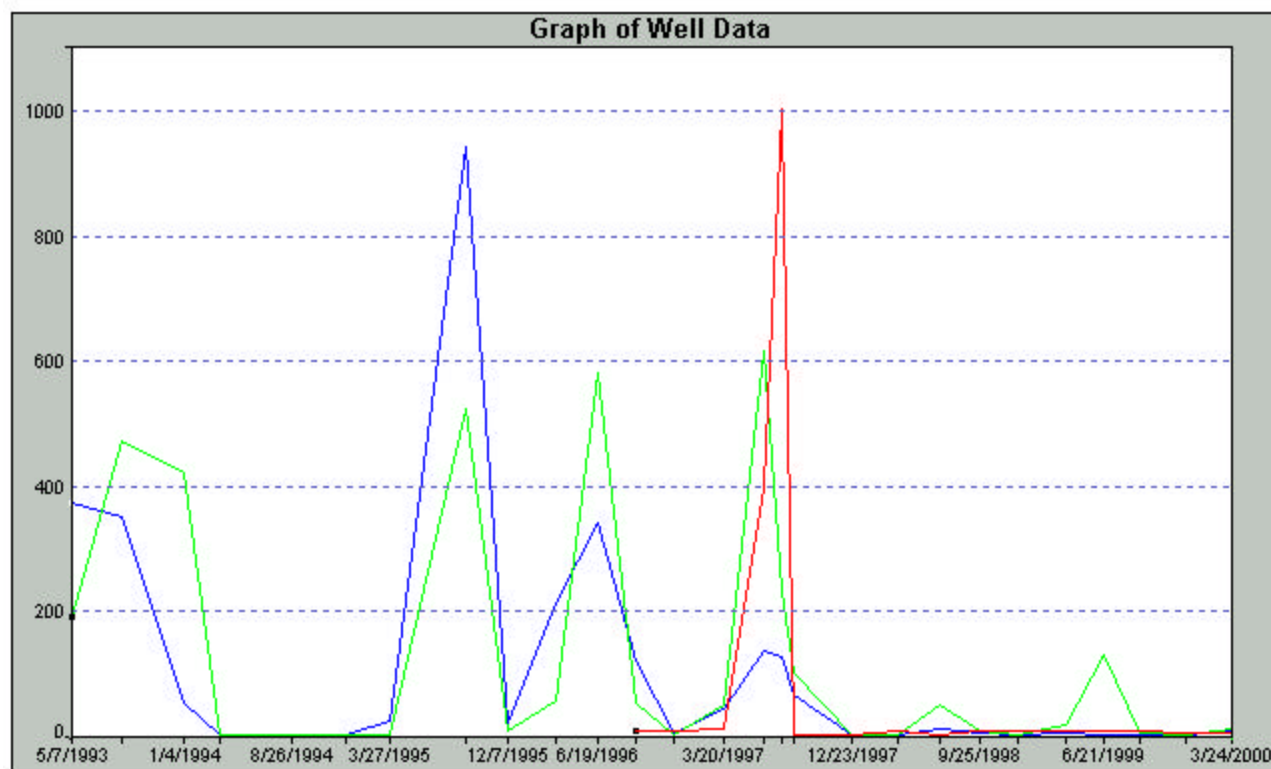


# View/Graph Monitoring Well Data

Monitoring Well MW-4 Report					
<b>ROTTEN ROBBIE (SOUTH LAKE TAHOE)</b> 2601 LAKE TAHOE BLVD. SOUTH LAKE TAHOE, CA 96150 <a href="#">(Show this Site on Map)</a>		<b>Regional Board (lead agency)</b> LAHONTAN RWQCB (REGION 6T) <b>Local Agency</b> EL DORADO DEPT. OF ENV. HEALTH MANAGEMEN			
<input type="button" value="Plot Selected Chemicals"/>		<input type="button" value="Reset Boxes"/>		Note: You may select up to 6 chemicals.	
<a href="#">(All Data)</a>   <a href="#">(Most Recent)</a>   <a href="#">(Maximum Concentrations)</a>					
<u>Date</u>	<u>Parameter</u>	<u>Qualifier</u>	<u>Result</u>	<u>Units</u>	<u>Plot</u>
NA	<a href="#">TOLUENE</a>		5540		<input type="checkbox"/>
NA	<a href="#">BENZENE</a>		940		<input checked="" type="checkbox"/>
NA	<a href="#">ETHYLBENZENE</a>		613		<input checked="" type="checkbox"/>
NA	<a href="#">XYLENES (TOTAL)</a>		6100		<input type="checkbox"/>
NA	<a href="#">METHYL-TERT-BUTYL-ETHER (MTBE)</a>		1000		<input checked="" type="checkbox"/>
NA	<a href="#">TRIBROMOACETIC ACID (TBAA)</a>		5		<input type="checkbox"/>



# Plot Trends



**Chemical**

[BENZENE](#)

[ETHYLBENZENE](#)

[METHYL-TERT-BUTYL-ETHER \(MTBE\)](#)

**Color**

Blue

Green

Red



# Examine Drinking Water Quality

## Well Concentrations Search Form

Water System Name

City

Chemical

METHYL-TERT-BUTYL-ETHER (MTBE)

Qualifier

Value

>

5

Records 21 - 40 of 51 Records

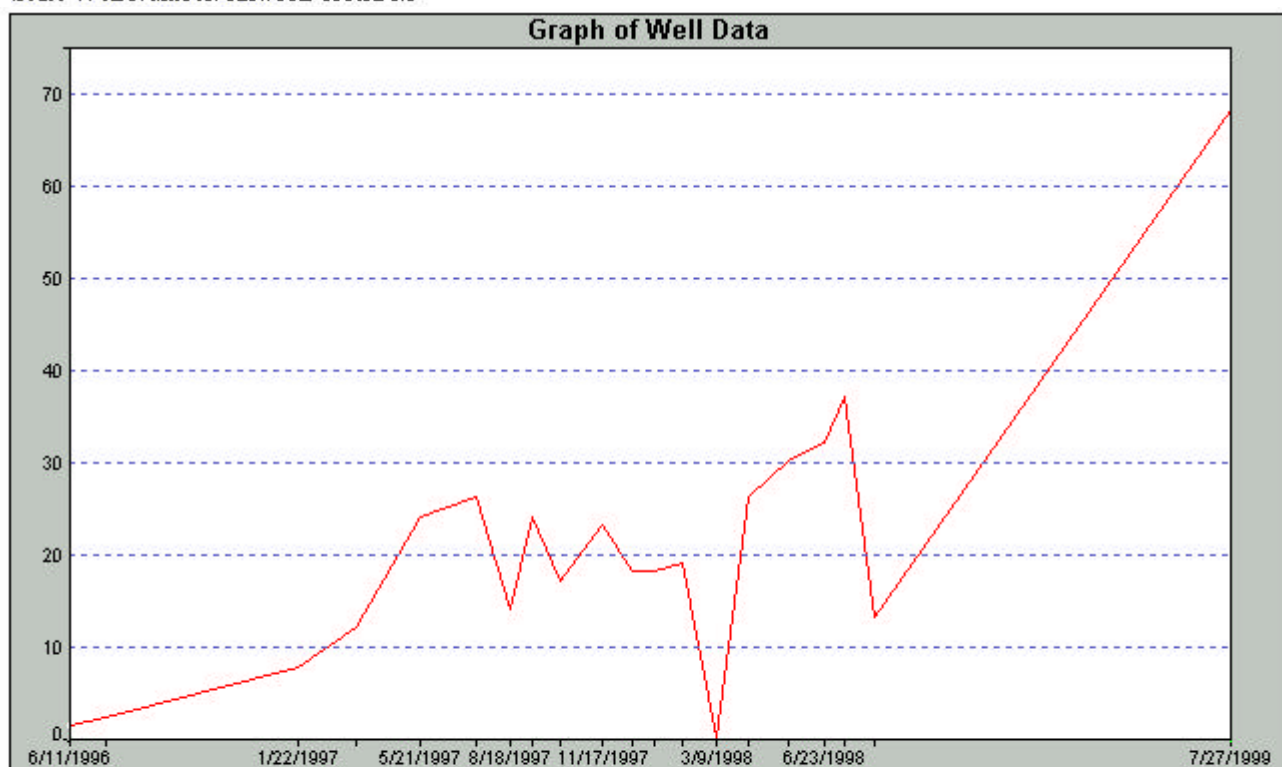
## METHYL-TERT-BUTYL-ETHER (MTBE) Findings

Well Name	PWS System	City	Max Value		
<a href="#">19 TH STREET GAC - TREATED</a>	SAN BERNARDINO, CITY OF	SAN BERNARDINO	11	<a href="#">Show on Map</a>	<a href="#">Graph</a>
<a href="#">EL CAPITAN LAKE - RAW</a>	SAN DIEGO CITY OF (WATER DEPARTMENT)	SAN DIEGO	11.2	<a href="#">Show on Map</a>	<a href="#">Graph</a>
<a href="#">VERDUGO WELL 02</a>	BRUCE KUEBLER	LOS ANGELES	13	<a href="#">Show on Map</a>	<a href="#">Graph</a>
<a href="#">CANYON LAKE - RAW</a>	ELSINORE VALLEY M W D	LAKE ELSINORE	14	<a href="#">Show on Map</a>	<a href="#">Graph</a>
<a href="#">LAKE PERRIS (EFFLUENT OR SURFACE)</a>		LA VERNE	15	<a href="#">Show on Map</a>	<a href="#">Graph</a>
<a href="#">ARCADIA WELL 04 - STANDBY</a>	SANTA MONICA - CITY	SANTA MONICA	19.6	<a href="#">Show on Map</a>	<a href="#">Graph</a>
<a href="#">AIR STRIPPING TOWER T-200B (S) INFLUENT</a>	BURBANK-CITY, WATER DEPT	BURBANK	20	<a href="#">Show on Map</a>	<a href="#">Graph</a>
<a href="#">LOPEZ TREATMENT PLANT RAW</a>	LOPEZ PROJECT	SAN LUIS OBISPO	20	<a href="#">Show on Map</a>	<a href="#">Graph</a>
<a href="#">TRAVIS WTP - TREATED</a>	EXEQUIEL GANDING JR	VALLEJO	22	<a href="#">Show on Map</a>	<a href="#">Graph</a>
<a href="#">WELL 06 - ABANDONED</a>	PRESIDIO OF SAN FRANCISCO	SAN FRANCISCO	23	<a href="#">Show on Map</a>	<a href="#">Graph</a>
<a href="#">WELL 11 - INACTIVE</a>	FRUITRIDGE VISTA WATER CO	SACRAMENTO	25	<a href="#">Show on Map</a>	<a href="#">Graph</a>
<a href="#">CONCERTO 01 - INACTIVE</a>	SOUTHERN CALIF WC -YORBA LINDA	ANAHEIM	40.9	<a href="#">Show on Map</a>	<a href="#">Graph</a>
<a href="#">WELL 05 - INACTIVE</a>	SOUTHERN PACIFIC COMPANY	BLOOMINGTON	46	<a href="#">Show on Map</a>	<a href="#">Graph</a>
<a href="#">WELL 01</a>	GARY DRILLING WATER SYSTEM	BAKERSFIELD	47	<a href="#">Show on Map</a>	<a href="#">Graph</a>



# Graph Drinking Water Quality

SOUTH TAHOE PUD - MAIN (SOUTH LAKE TAHOE)  
TATA WELL 04 (ANGORA WELL 10)  
State Well Number: 12N/18E-05R02 M



Date	Parameter	Qualifier	Result	Units	MCL
7/27/1999	METHYL-TERT-BUTYL-ETHER (MTBE)		68	UG/L	5
8/10/1998	METHYL-TERT-BUTYL-ETHER (MTBE)		13	UG/L	5
7/13/1998	METHYL-TERT-BUTYL-ETHER (MTBE)		37	UG/L	5
6/23/1998	METHYL-TERT-BUTYL-ETHER (MTBE)		37	UG/L	5



# Expected Benefits

---

- Enable easy exchange of information between the regulatory agencies, industry, and the public
- Builds an information network to integrate data-  
[Supports other programs](#)
- Provides statewide access to permit, compliance, and enforcement actions- [Integrated easy access](#)
- Moves agencies and regulated businesses to electronic reporting- [Improves data quality](#)
- Allows analysis of previously unknown relationships- [Better decisions](#)



# GeoTracker LUST Data

---

- MTBE reported maximum concentrations
  - Present historic data is hand-entered by regulators
  - Will be derived from EDF data
  - Will improve as lab results (EDF) are electronically reported
- Regulatory tracking
  - Regulators enter these fields
  - Improving as agencies move on-line



# GeoTracker LUST Data

---

- Location data
  - Estimated by geocoding site address (median error ~380 feet)
  - On-line tools allow lead agency case workers to edit the site location on the GeoTracker maps
  - RPs will report sampling locations
  - Will improve as latitude/longitude data is electronically reported and as regulators position sites on maps



# GeoTracker Public Drinking Water Source Data

---

- Historical location data is of poor quality
  - Originally obtained from DHS records (estimated from township range maps)
    - Only 30% estimated to be within 1000 feet
  - Improved data by using state well name to position some wells to the center of the quarter quad
  - For single well systems, estimated by geocoding facility address



# GeoTracker Public Drinking Water Source Data

---

- The SWRCB is working with DHS to improve drinking source locations
  - On-line tools allow well owners to edit the site location on the GeoTracker maps
  - SWRCB provides DHS with new locations
  - Improved locations of ~4,000 public wells
- DHS is moving to requiring electronic reporting of water quality data