

DataStream Free™



Quick Reference

Prepared by

enABL, Inc.

1601 Abbott Road, Suite 203

Anchorage, Alaska 99507

Phone: (907) 346-3861

Fax: (907) 346-1577

E-mail: information@arsenaultlegg.com

Web site: www.enabl.com

DataStream Free™



Quick Reference



DataStream Freeä

DataStream Free™ is a subset of the DataStream, Version 1.21, program designed to create data reduction reports from laboratory electronic data deliverables (EDDs). DataStream Free allows the user to import EDDs, review the data, perform find/replaces, append multiple EDDs into a single group, and export to various data formats (e.g., fixed length, comma/quote delimited, or *.XLS).

Key Concepts

There are several key elements of DataStream Free that make the program a useful tool:

- Compatibility with the Electronic Deliverable Format (EDF), versions 1.2a and 1.2i, in the relational or flat file formats.
- Data may be imported as one format and exported as a different format.
- Multiple laboratory reports may be consolidated into logical data groups (i.e., based upon projects) for ease of retrieval and reporting.
- Data groups may be exported to a Microsoft® Excel spreadsheet, where further formatting may be conducted with all the tools currently available in Excel.

This document provides an introduction to the main functions of DataStream Free.

Getting Started

Install the program.

Installing DataStream Free:

DataStream Free is installed from one CD.

1. Click on the “Start” button.
2. Place the DataStream Free installation CD into the CD drive.
3. Click on “Run” and type [d:\setup].
4. Click on the “OK” button.
5. Follow on-screen instructions to complete installation.

As the DataStream Free program continues to grow and change, modifications will be distributed through Service Pack installations as they become available. If a Service Pack is included with the program installation, install it now.

Installing a Service Pack:

Before installing the Service Pack, it is recommended that a copy of the DSTREAM.EXE file be made and stored in a temporary directory until installation is complete and verified.

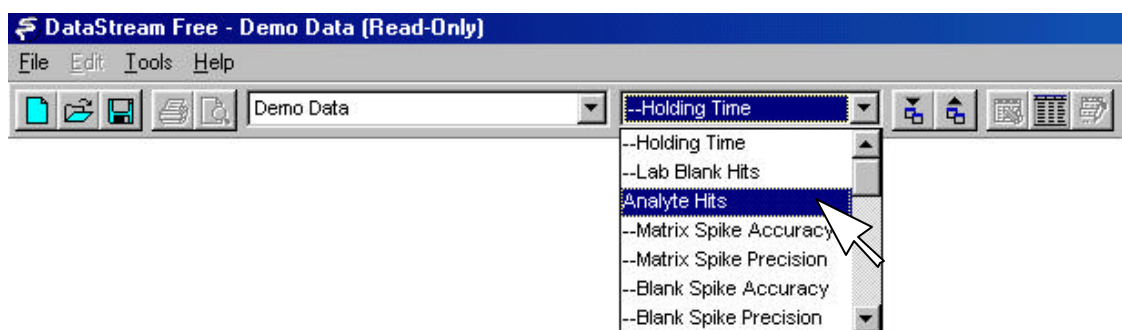
1. Click on the “Start” button.
2. Place the disk labeled “DataStream Free Service Pack #” in the 3.5-inch floppy disk drive.
3. Click on “Run” and type [a:\ds_serpack#].
4. Follow on-screen instructions to complete installation.

Open the program by double clicking on the program icon in the DataStream Free Program

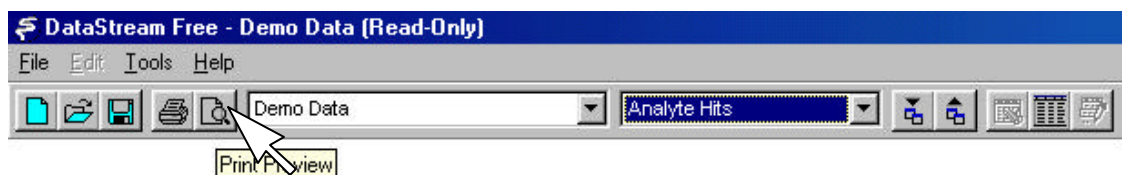
Group: 

Verifying Data Quality

With the Demo Data group selected, click on the down arrow for the Verification Reports (or select “Tools/Verifications” from the menu bar). In the Free version of DataStream, the only report available is the “Analytes with Hits” report.



Highlight “Analyte Hits” and click on the preview button to look at the report. (To send a report directly to a printer, click on the “Print” button.)



Review the report.

Report Designer - ahits.frx - Page 1 - DataStream Free - Demo Data (Read Only)

Print Preview

100%

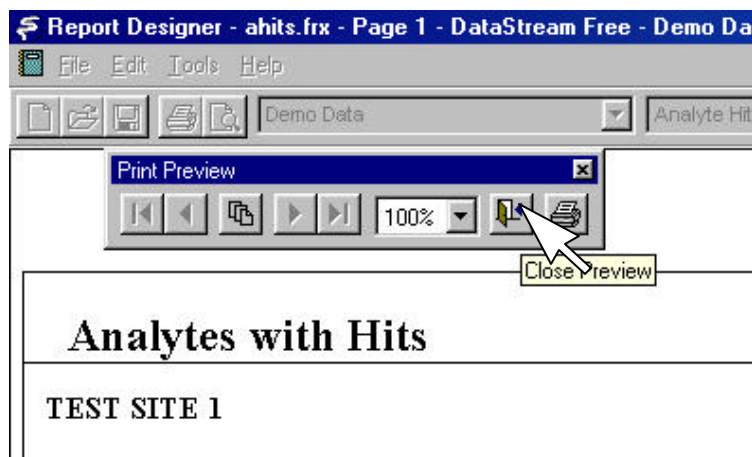
Demo Data

Analytes with Hits

TEST SITE 1

Analyte	Client Sample ID	Lab Sample ID	Location	Collection Date	Result	Method Detection Limit	Reporting Detection Limit	Reporting Limit	Qualifier	Factor	Units
Benzene	QASAMP02	QASAMPLE02	WELL 4	01/01/1996	1.2000	0.5000	1.0000		PQL	1.000	UG/L
	TESTSAMP03	SAMPLE 03	WELL 1	01/01/1996	1.3000	0.5000	1.0000		PQL	1.000	UG/L
	TESTSAMP10	SAMPLE 10	WELL 3	01/01/1996	7.0000	0.5000	1.0000		PQL	1.000	UG/L
	TESTSAMP14	SAMPLE 14	WELL 4	01/01/1996	1.2000	0.5000	1.0000		PQL	1.000	UG/L
	TESTSAMP17	SAMPLE 17	WELL 5	01/01/1996	20.0000	0.5000	1.0000		PQL	1.000	UG/L
Diesel Range Organics	TESTSAMP10	SAMPLE 10	WELL 3	01/01/1996	25.0000	25.0000	50.0000		PQL	1.000	UG/L
	TESTSAMP17	SAMPLE 17	WELL 5	01/01/1996	43.0000	25.0000	50.0000		PQL	1.000	UG/L
Ethylbenzene	QASAMP02	QASAMPLE02	WELL 4	01/01/1996	1.3000	0.5000	1.0000		PQL	1.000	UG/L
	TESTSAMP03	SAMPLE 03	WELL 1	01/01/1996	3.5000	0.5000	1.0000		PQL	1.000	UG/L
	TESTSAMP10	SAMPLE 10	WELL 3	01/01/1996	4.5000	0.5000	1.0000		PQL	1.000	UG/L
	TESTSAMP13	SAMPLE 13	WELL 4	01/01/1996	1.9000	0.5000	1.0000		PQL	1.000	UG/L
	TESTSAMP14	SAMPLE 14	WELL 4	01/01/1996	1.7000	0.5000	1.0000		PQL	1.000	UG/L
Lead	TESTSAMP11	SAMPLE 11	WELL 3	01/01/1996	83.0000	40.0000	75.0000		PQL	1.000	UG/L
	TESTSAMP17	SAMPLE 17	WELL 5	01/01/1996	126.0000	40.0000	75.0000		PQL	1.000	UG/L
Toluene	TESTSAMP10	SAMPLE 10	WELL 3	01/01/1996	15.0000	0.5000	1.0000		PQL	1.000	UG/L
	TESTSAMP14	SAMPLE 14	WELL 4	01/01/1996	24.0000	0.5000	1.0000		PQL	1.000	UG/L
	TESTSAMP17	SAMPLE 17	WELL 5	01/01/1996	28.0000	0.5000	1.0000		PQL	1.000	UG/L
Xylenes	QASAMP02	QASAMPLE02	WELL 4	01/01/1996	21.000	0.5000	1.0000		PQL	1.000	UG/L

Click on the “Close Preview” button to return to the main screen.



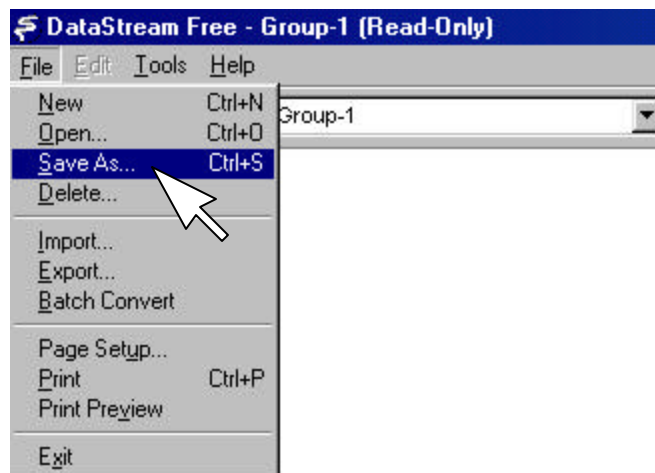
To export the entire data group to an Excel spreadsheet, select “MS Excel Export” from the bottom of the Verifications list, and click on either the “Print” or “Print Preview” button.

Importing EDDs

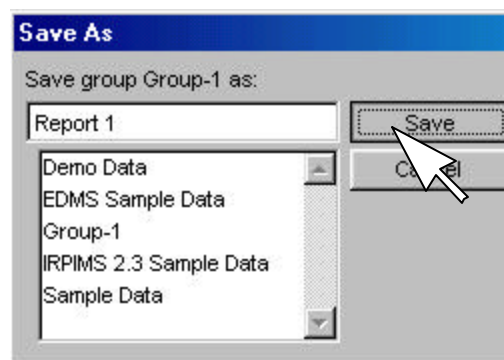
To import new EDF data, create a new group by clicking on the “New” button.



A new group called “Group-1” will be created. Select “File/Save As..” from the menu bar to rename the group.



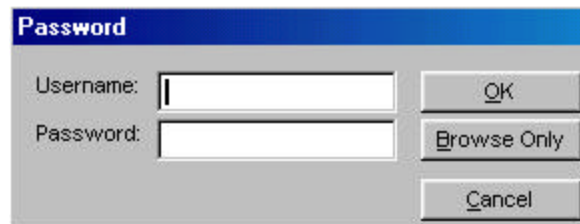
Type over “Group-1” with the new name and click on “Save.”



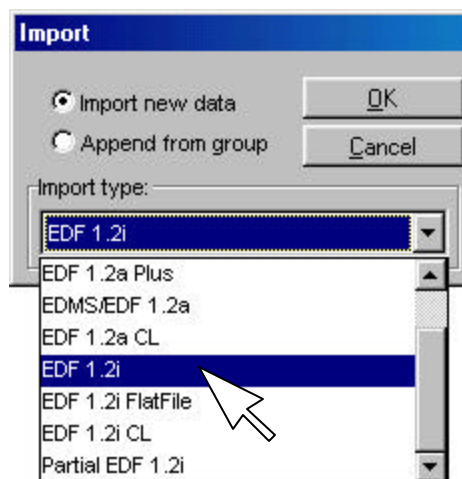
To import data into this group, with the group name selected in the “Group” list box, click on the “Import” button.



The first time you import you will need to login. Type [dstream] into the username and password and click on the “OK” button.



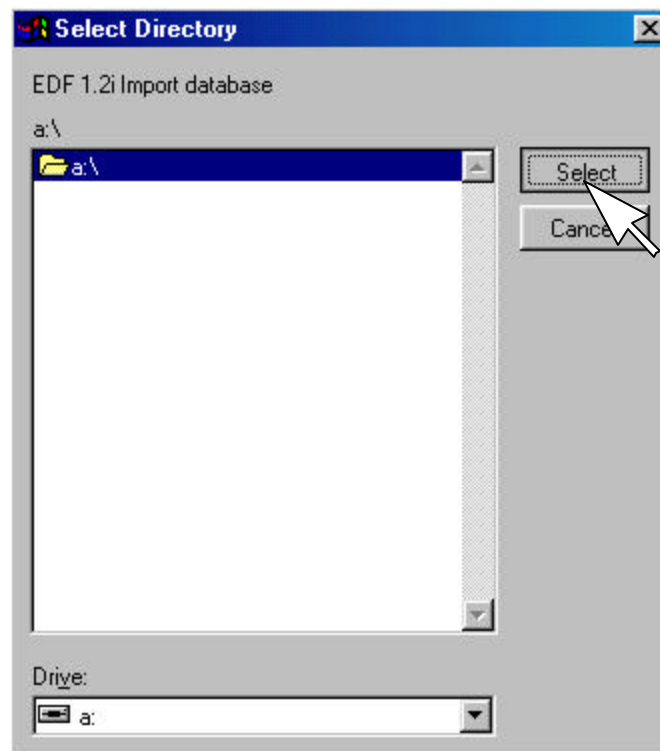
Select the Import Type (i.e., the format in which the data are) and click on “OK.”



Select the File Type and click on “Get Directory” to locate the directory in which all files to be imported reside, or click on “Get Files” to locate the individual files to import (use this button if the file names to import differ from the format file names).

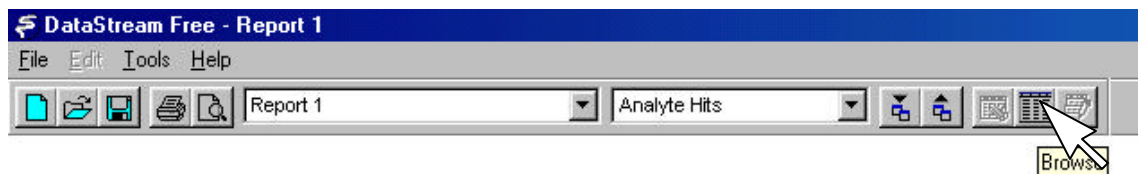


Select the directory in which the data files to import reside.

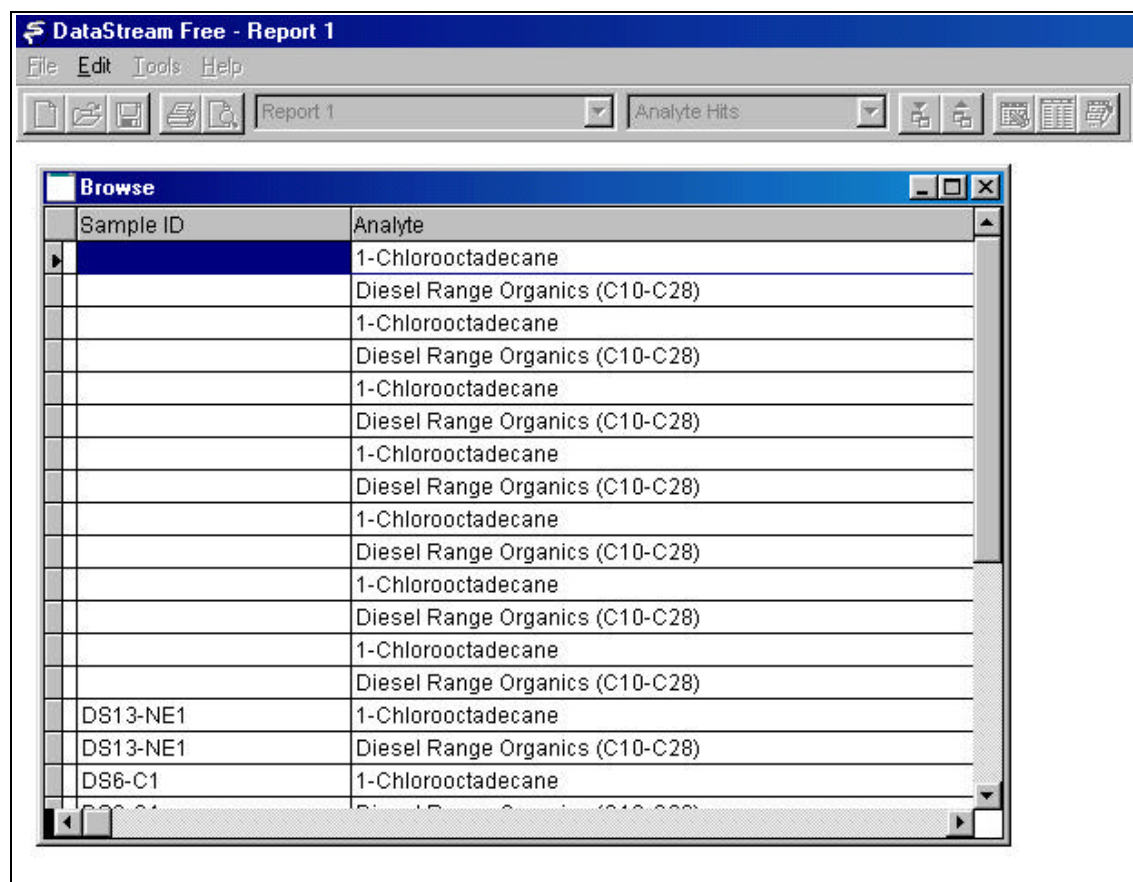


Multiple laboratory reports may be combined into a single group by creating a new group and appending existing groups into the new group using the “Import” button and clicking on the radio button for “Append from group.”

To view and/or edit your data, click on the “Browse” button.



The *Browse* screen may be used to adjust data, such as the Global ID, using the “Find/Replace” feature under “Edit” on the menu bar.

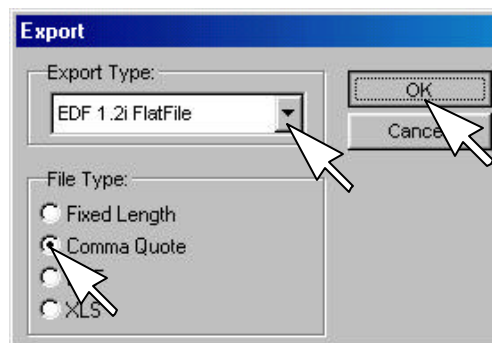


Exporting Data Groups

Data imported as one format (e.g., EDF 1.2i, fixed length) may be exported in a different format (e.g., EDF 1.2i FlatFile, comma/quote delimited). To export a data group, select the group from the “Group” list box, and click on the “Export” button.



Select the Export Type and File Type, and click on the “OK” button.



Select the directory receiving the export files.



Remember to export all necessary files to create a complete EDF format:

EDF Format Name	DataStream Export Type
EDF 1.2a	Partial EDF 1.2a EDF 1.2a QC EDF 1.2a CL
EDF 1.2i Relational	Partial EDF 1.2i EDF 1.2i QC EDF 1.2i CL
EDF 1.2i Flat File	EDF 1.2i FlatFile EDF 1.2i CL

To close the program, select “File/Exit” from the menu bar.

Contact Us

For more details on the program, please contact enABL, Inc., at (907) 346-3861, or visit our Web site at www.enabl.com. The full version of DataStream, Version 1.21, and its *User's Manual*, are available for purchase from enABL, Inc.