



California  
Underground Storage  
Tank Program

---

# AB2886 Electronic Reporting

Del Mar Meeting

May 30, 2001

Anne M. Happel, Ph.D.

EcoInteractive, Inc

[ahappel@ecointeractive.com](mailto:ahappel@ecointeractive.com)



## What Type of Data Must Be Electronically Reported?

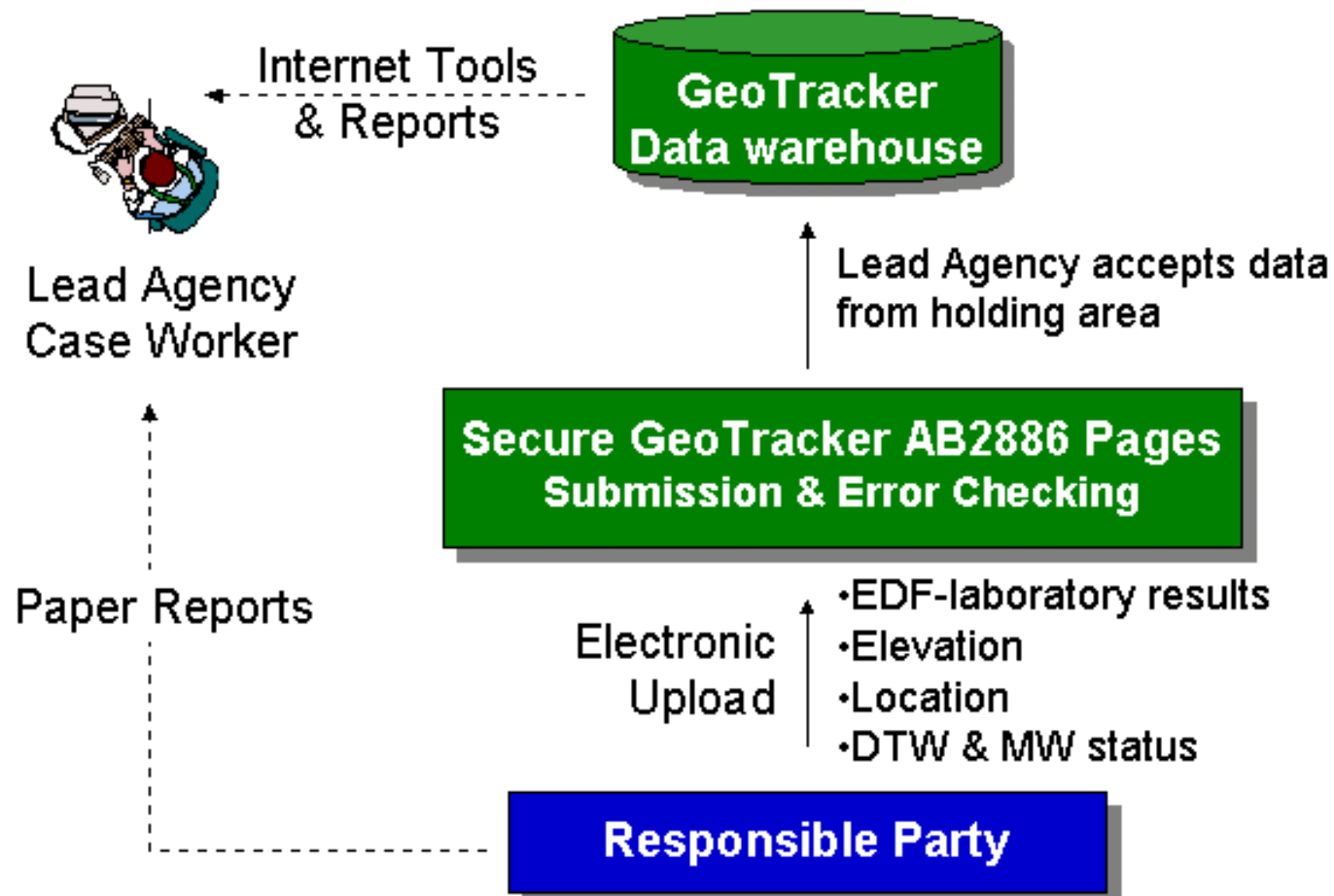
---

### AB2886 Electronic Data Deliverables

- Laboratory Sample Results
- Sample Locations (latitude/longitude)
- Monitoring Well Elevation Data
- Groundwater Well Data (DTW & status)



# AB2886 Data Flow

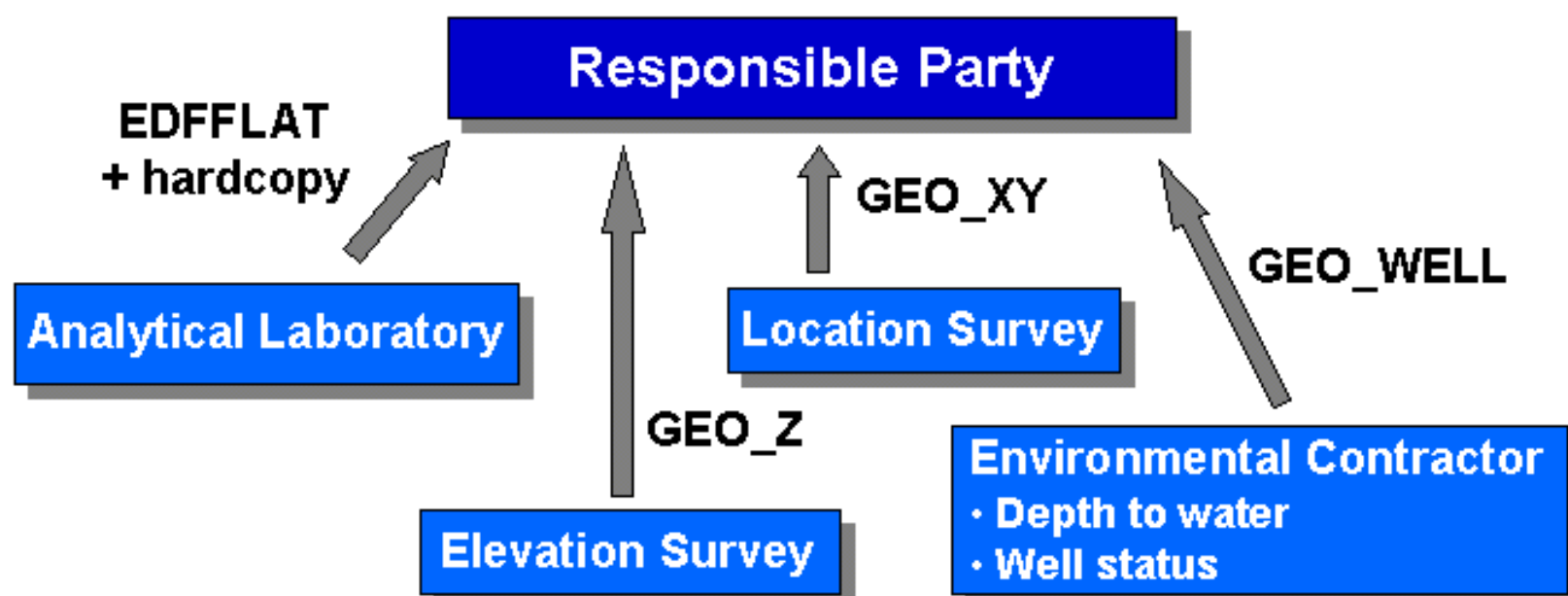




# Potential RP Data Flow

- Submit EDD to GeoTracker
- Submit report to lead agency

- Prepare hard copy report
- Data Interpretation





# Get Ready For Electronic Reporting

---

- Verify that your analytical lab can produce EDF
  - Review/modify your laboratory contracts
  - Test your lab's EDF format by using the GeoTracker "EDD Error Checking Tools"
- Plan ahead for location and elevation data
  - Compare costs for several scenarios
    - Outsource
    - Buy GPS equipment
    - Rent GPS equipment
- Check GeoTracker "AB2886" link for new documents and information



<http://geotracker.swrcb.ca.gov/>

A screenshot of the GeoTracker website interface. The page has a blue sidebar on the left and a main content area with a map background. The sidebar contains a 'Map Address' section with input fields for 'Address', 'City', and 'Zip', and a 'Regional Map' section with a 'County' input field and a 'Map It' button. The main content area features the 'GeoTracker' logo, a tagline, and two columns of links under 'TOOLS' and 'INFORMATION'. The link 'AB2886' is highlighted with a red box. At the bottom, there are links for 'Contact Us', 'SWRCB', and 'GeoTracker'.

**Map Address:**  
Address:   
City:   
Zip:   
**Regional Map:**  
County:

**GeoTracker**  
Your link to environmental data for regulated facilities in California

TOOLS	INFORMATION
<a href="#">Site/Facility Finder</a>	<a href="#">About GeoTracker</a>
<a href="#">Well Concentrations</a>	<a href="#">Hot News</a>
<a href="#">Case Finder</a>	<a href="#">Drinking Water Quality</a>
<a href="#">MTBE/Case Reports</a>	<a href="#">MTBE Reports</a>
<a href="#">GeoTracker Demo</a>	<a href="#">Subsurface Investigations</a>
<a href="#">GeoTracker</a>	<a href="#">AB2886</a>

[Contact Us](#)   [SWRCB](#)   [GeoTracker](#)



## Laboratory Sample Results- What is EDF?

---

- A way to transfer laboratory and field information electronically
- The electronic version of a laboratory report
- Includes:
  - Chain-of custody information
  - Laboratory results
  - Quality assurance information



# How EDF Works

---

- Laboratory exports data from their LIMS
- Data is converted into EDF1.2i upload format with
  - Laboratory LIMS software tools
  - COELT software provided by EDF Program
- EDD is verified with error checking tools
  - GeoTracker web tool
  - EDCC software provided by EDF Program
- Data is transferred to client with hard copy report





## EDF Available Support

---

- Guidelines & Restrictions,
- Training- Ten (3-day) sessions state-wide
- Desktop Software tools:
  - COELT- COE Loading Tool
  - EDCC- Electronic Deliverable Consistency Checker (also GeoTracker web version)



# Location Data Potential Pitfalls

---

- **Requires sub-meter accuracy**
  - Use of survey quality GPS
  - Limited use of 1 to 5 meter GPS units
  - Do not use recreational/navigational GPS units
- **Requires submission of metadata**
  - Survey XY\_Z Restriction & Guidelines (to be released)



# Elevation Data Potential Issues

---

- **Requires**
  - Measured elevation to top of well casing
  - Measured riser height (for new surveys)
- **Can not use GPS to determine well elevation**
- **Requires submission of metadata**
  - Survey XY\_Z Restriction & Guidelines (to be released)



# Who Pays for AB2886 Reporting?

---

**“The LUST Fund will reimburse all costs to the extent that costs are necessary, reasonable, and eligible”**

- Electronic Reporting Costs for:
  - Analytical Analysis
  - Elevation Surveys
  - Depth to Water Measurements and well status
  - Location surveys



# Responsible Party Electronic Reporting Interface

1. Find GeoTracker LUST site and well IDs
2. Use error checking tools & get error reports
3. Upload/submit EDDs

AB2886 Electronic Delivery Menu	
Choose an Action Below	
<b>Global ID:</b> T0064123	<b>Business Address:</b> 123 Test Street
<b>Business Name:</b> Test Station	<b>Business City:</b> Test City
<b>Phone Number:</b> 123-456-7890	<b>Business County:</b> Yolo
<b>Upload EDDs</b>	<b>Error Check EDDs</b>
<a href="#">GEO_XY</a>	<a href="#">GEO_XY</a>
<a href="#">GEO_Z</a>	<a href="#">GEO_Z</a>
<a href="#">EDFFLAT</a>	<a href="#">EDFFLAT</a>
<a href="#">GEO_WELL</a>	<a href="#">GEO_WELL</a>
<b>Find GeoTracker ID's</b>	<b>Logout/Find Facility</b>
<a href="#">LUST Sites</a>	<a href="#">Find Another Facility</a>
<a href="#">Sampling Points</a>	<a href="#">Logout</a>



# Security Identification

---

- Responsible parties will need to obtain a password to submit data
- Request a password on-line

<b>Geotracker Login</b> Please enter your security information	
User Name:	<input type="text"/>
Password:	<input type="password"/>
<input type="button" value="Submit"/>	



## Error Check Before Submission

---

- The “browse” button will let you choose a file from your computer
- The “import” button will submit the file to error checking program
- Dynamic error check reports will be returned

**Check EDFFLAT**  
Import Step 1: Locate the Data File

Select the file by using the "Browse" button below. The file must follow the [uploaded file format guidelines](#). **Be aware, this is not an upload and will NOT be considered a submission to the SWRCB.**

Find File:



# Uploading Data For Submission

- The “browse” button will let you choose a file from your computer
- The “import” button will submit the file to the SWRCB
- All data will be “error checked” and data must pass the error check to be submitted

**Importing EDFFLAT**  
Import Step 1: Select Site Data Files

Select the EDF file by using the "Browse" button below. The uploaded file must follow the [uploaded file format guidelines](#). **Be aware, uploading an EDF file will be considered a submission to the SWRCB.**

Location/Substance File:

**Success!**  
The Procedure Was Successful

There were no errors in your data! Data successfully processed.

Click [here](#) to go back to the main menu.







# What Is the GeoTracker Solution?

---

A data warehouse that integrates data across environmental programs via the internet

- Is the choice of the SWRCB to manage the MTBE problem
- Provides public access and supports business-to-government transactions
- Facilitates decentralized data management-lead agencies “own” and manage their data
- Simplifies data exchange and improves data quality

## Electronic Reporting



Analytical Data

On-line permitting & compliance reporting



Environmental Contractors

## Regulatory Tracking & GIS Coverages

Government Agencies



- State
- Local
- Federal



## Decision Support

- Financial
- Technical
- Regulatory

Public Access

**UNDERGROUND STORAGE TANK UNAUTHORIZED RELEASE / CONTAMINATION SITE REPORT**

REPORT DATE: (MM/DD/YYYY)

HAZARDOUS MATERIAL INCIDENT REPORT FILED WITH OES? ☐ NO ☐ YES

I, REPORTED BY

REPORTING INDIVIDUAL: (First and Last Name)

FAX: (888-888-8888)

PHONE: (888-888-8888)

EMAIL:

REPORTING INDIVIDUAL TYPE: (select all that apply - hold down ctrl to select multiple)

☐ Business Owner  
☐ Owner-Agent  
☐ Operator  
☐ Tank Owner  
☐ Fee Title/Property Owner  
☐ Local Agency

ORGANIZATION NAME:

MAILING ADDRESS:

STREET ADDRESS:

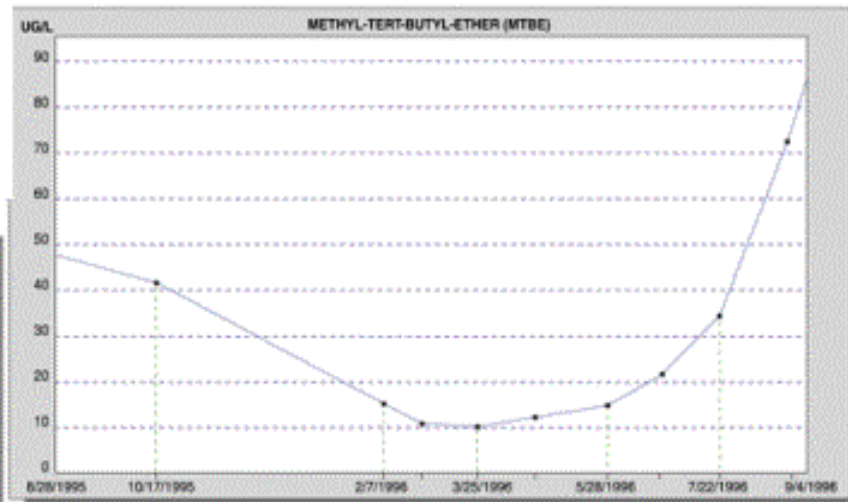
APT/SUITE/BUILDING #:

CITY:

STATE:

ZIP:

- ◆ Database integration
- ◆ Optimized web performance
- ◆ On-line permitting and public reporting
- ◆ Download data from the web
- ◆ On-line analysis & GIS tools
- ◆ Tools to position facilities on-line
- ◆ On-line reports and database edit screens



**Leaking Underground Fuel Tank Report for:**  
**GAS STATION**  
 1000 MAIN BLVD  
 SAN MILLER, CA 97944

Site Info: [\(regulatory history\)](#) | [\(locational information\)](#) | [\(detailed site info\)](#)

Regional Board:	LOS ANGELES RWQCB (REGION 4)
Local Agency (lead agency):	SAN MILLER LOCAL AGENCY

Leak Info: [\(more detailed release information\)](#)

Substance Released:	GASOLINE
Remediation on site:	

4 Public Water Well(s) Estimated to be Within 1/2 Mile: [\(detailed well info\)](#)

[Show this Site on Map](#)





# Internet Access to Site Data

## Leaking Underground Fuel Tank Report

### ROTTEN ROBBIE (SOUTH LAKE TAHOE)

2601 LAKE TAHOE BLVD.  
SOUTH LAKE TAHOE, CA 96150  
[\(Show this Site on Map\)](#)

### Regional Board (lead agency)

LAHONTAN RWQCB (REGION 6T)

### Local Agency

EL DORADO DEPT. OF ENV. HEALTH MANAGEMEN

## Choose a Report To View

### Site Info:

- [Regulatory History](#)
- [Locational Information](#)
- [Analytical Data](#)

### Leak Info:

- [Detailed Release Information](#)
- [Remediation on Site](#)

### Additional Info:

- [10 Monitoring Wells For This LUFT Site](#)
- [11 Public Water Well\(s\) Estimated to be Within 1/2 Mile of this LUFT Site](#)



# View/Graph Monitoring Well Data

**Monitoring Well MW-4 Report**

**ROTTEN ROBBIE (SOUTH LAKE TAHOE)**  
2601 LAKE TAHOE BLVD.  
SOUTH LAKE TAHOE, CA 96150  
[\(Show this Site on Map\)](#)

**Regional Board (lead agency)**  
LAHONTAN RWQCB (REGION 6T)  
**Local Agency**  
EL DORADO DEPT. OF ENV. HEALTH MANAGEMEN

Plot Selected Chemicals

Reset Boxes

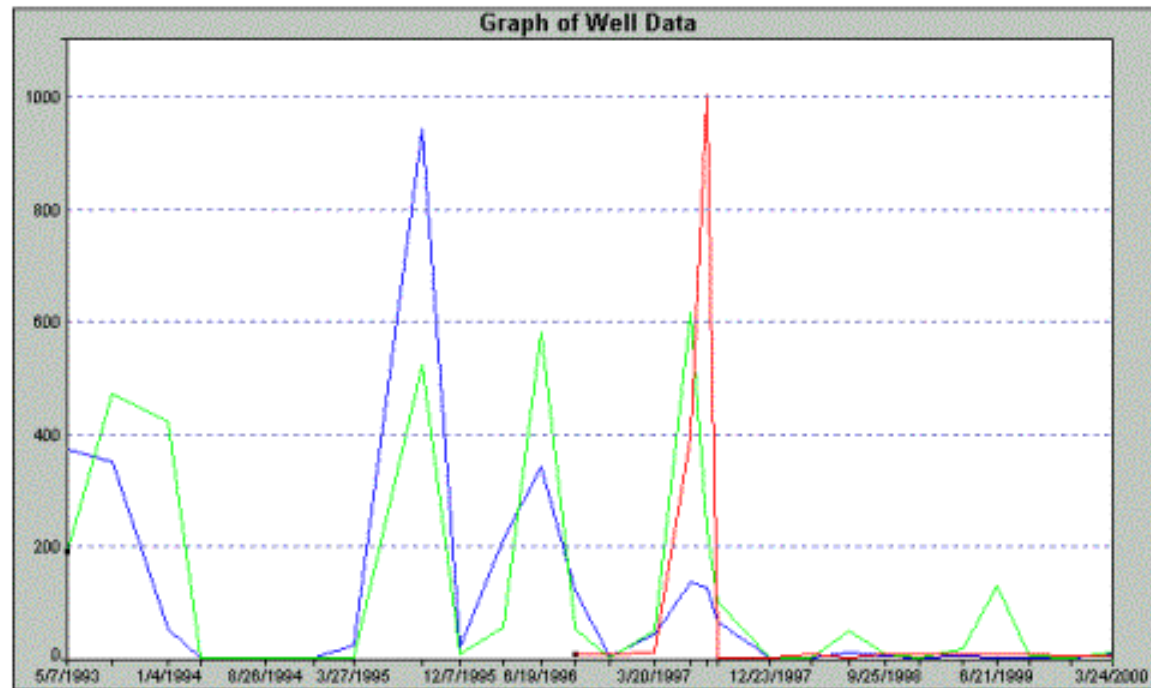
Note: You may select up to 6 chemicals.

(All Data) | (Most Recent) | (Maximum Concentrations)

Date	Parameter	Qualifier	Result	Units	Plot
NA	<a href="#">TOLUENE</a>		5540		<input type="checkbox"/>
NA	<a href="#">BENZENE</a>		940		<input checked="" type="checkbox"/>
NA	<a href="#">ETHYLBENZENE</a>		613		<input checked="" type="checkbox"/>
NA	<a href="#">XYLENES (TOTAL)</a>		6100		<input type="checkbox"/>
NA	<a href="#">METHYL-TERT-BUTYL-ETHER (MTBE)</a>		1000		<input checked="" type="checkbox"/>
NA	<a href="#">TRIBROMOACETIC ACID (TBAA)</a>		5		<input type="checkbox"/>



# Plot Trends



## Chemical

[BENZENE](#)

[ETHYLBENZENE](#)

[METHYL-TERT-BUTYL-ETHER \(MTBE\)](#)

## Color

Blue

Green

Red





# Examine Drinking Water Quality

Well Concentrations Search Form			
Water System Name			
<input type="text"/>			
City			
<input type="text"/>			
Chemical	Qualifier	Value	
METHYL-TERT-BUTYL-ETHER (MTBE)	>	5	
<input type="button" value="Search"/>			

Records 21 - 40 of 51 Records

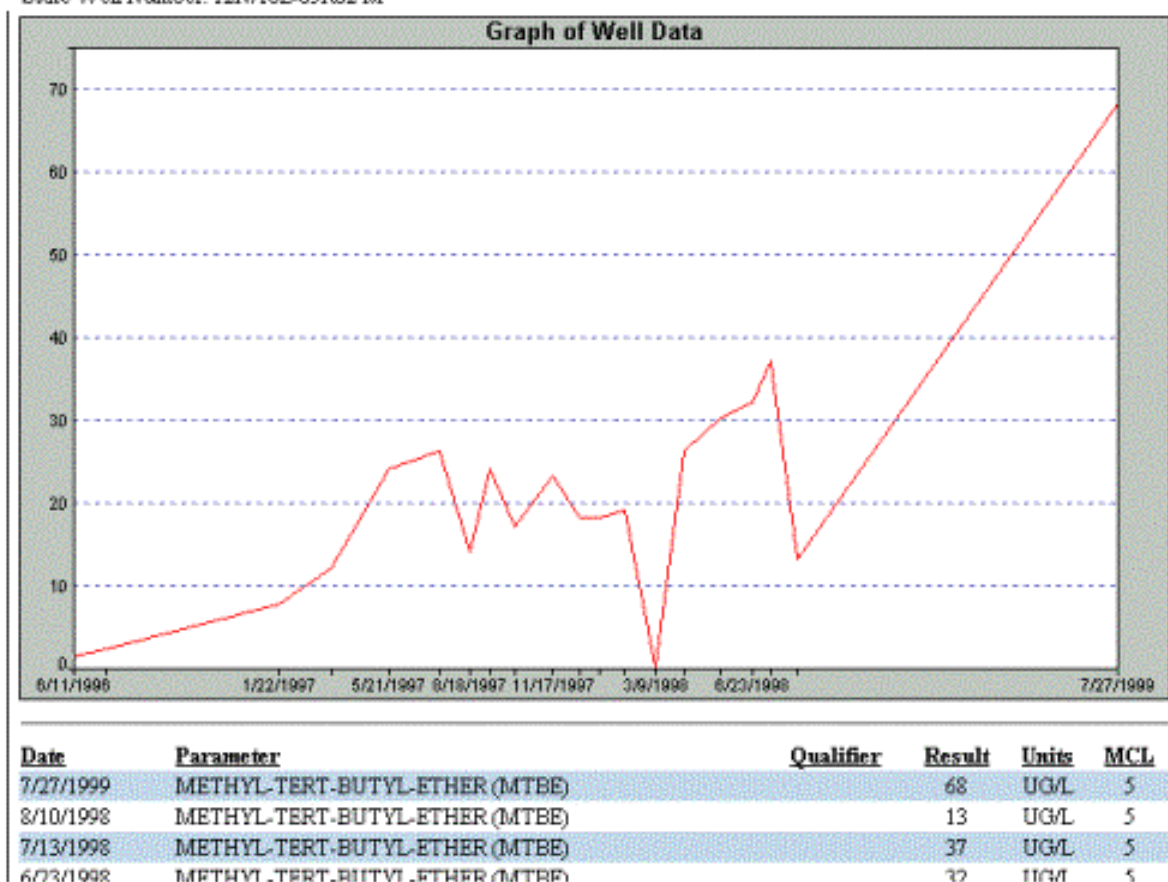
## METHYL-TERT-BUTYL-ETHER (MTBE) Findings

Well Name	PWS System	City	Max Value		
<a href="#">19 TH STREET GAC - TREATED</a>	SAN BERNARDINO, CITY OF	SAN BERNARDINO	11	<a href="#">Show on Map</a>	<a href="#">Graph</a>
<a href="#">EL CAPITAN LAKE - RAW</a>	SAN DIEGO CITY OF (WATER DEPARTMENT)	SAN DIEGO	11.2	<a href="#">Show on Map</a>	<a href="#">Graph</a>
<a href="#">VERDUGO WELL 02</a>	BRUCE KUEBLER	LOS ANGELES	13	<a href="#">Show on Map</a>	<a href="#">Graph</a>
<a href="#">CANYON LAKE - RAW</a>	ELSINORE VALLEY M W D	LAKE ELSINORE	14	<a href="#">Show on Map</a>	<a href="#">Graph</a>
<a href="#">LAKE PERRIS (EFFLUENT OR SURFACE)</a>		LA VERNE	15	<a href="#">Show on Map</a>	<a href="#">Graph</a>
<a href="#">ARCADIA WELL 04 - STANDEY</a>	SANTA MONICA - CITY	SANTA MONICA	19.6	<a href="#">Show on Map</a>	<a href="#">Graph</a>
<a href="#">AIR STRIPPING TOWER T-200B (S) INFLUENT</a>	BURBANK-CITY, WATER DEPT	BURBANK	20	<a href="#">Show on Map</a>	<a href="#">Graph</a>
<a href="#">LOPEZ TREATMENT PLANT RAW</a>	LOPEZ PROJECT	SAN LUIS OBISPO	20	<a href="#">Show on Map</a>	<a href="#">Graph</a>
<a href="#">TRAVIS WTP - TREATED</a>	EXEQUIEL GANDING JR	VALLEJO	22	<a href="#">Show on Map</a>	<a href="#">Graph</a>
<a href="#">WELL 06 - ABANDONED</a>	PRESIDIO OF SAN FRANCISCO	SAN FRANCISCO	23	<a href="#">Show on Map</a>	<a href="#">Graph</a>
<a href="#">WELL 11 - INACTIVE</a>	FRUITRIDGE VISTA WATER CO	SACRAMENTO	25	<a href="#">Show on Map</a>	<a href="#">Graph</a>
<a href="#">CONCERTO 01 - INACTIVE</a>	SOUTHERN CALIF WC - YORBA LINDA	ANAHEIM	40.9	<a href="#">Show on Map</a>	<a href="#">Graph</a>
<a href="#">WELL 05 - INACTIVE</a>	SOUTHERN PACIFIC COMPANY	BLOOMINGTON	46	<a href="#">Show on Map</a>	<a href="#">Graph</a>
<a href="#">WELL 01</a>	GARY DRILLING WATER SYSTEM	BAKERSFIELD	47	<a href="#">Show on Map</a>	<a href="#">Graph</a>



# Graph Drinking Water Quality

SOUTH TAHOE PUD - MAIN (SOUTH LAKE TAHOE)  
TATA WELL 04 (ANGORA WELL 10)  
State Well Number: 12N/18E-05R02 M







# Expected Benefits

---

- Enable easy exchange of information between the regulatory agencies, industry, and the public
- Builds an information network to integrate data- [Supports other programs](#)
- Provides statewide access to permit, compliance, and enforcement actions- [Integrated easy access](#)
- Moves agencies and regulated businesses to electronic reporting- [Improves data quality](#)
- Allows analysis of previously unknown relationships- [Better decisions](#)



# GeoTracker LUST Data

---

- MTBE reported maximum concentrations
  - Present historic data is hand-entered by regulators
  - Will be derived from EDF data
  - Will improve as lab results (EDF) are electronically reported
- Regulatory tracking
  - Regulators enter these fields
  - Improving as agencies move on-line



# GeoTracker LUST Data

---

- Location data
  - Estimated by geocoding site address (median error ~380 feet)
  - On-line tools allow lead agency case workers to edit the site location on the GeoTracker maps
  - RPs will report sampling locations
  - Will improve as latitude/longitude data is electronically reported and as regulators position sites on maps



## GeoTracker Public Drinking Water Source Data

---

- **Historical location data is of poor quality**
  - Originally obtained from DHS records (estimated from township range maps)
    - Only 30% estimated to be within 1000 feet
  - Improved data by using state well name to position some wells to the center of the quarter quad
  - For single well systems, estimated by geocoding facility address



## GeoTracker Public Drinking Water Source Data

---

- The SWRCB is working with DHS to improve drinking source locations
  - On-line tools allow well owners to edit the site location on the GeoTracker maps
  - SWRCB provides DHS with new locations
- DHS is moving to requiring electronic reporting of water quality data