

STATE OF NEVADA  
COUNTY OF WASHOE

}SS

I, MICHAEL D. BUSCHELMAN, BEING FIRST DEPUTY SURVEYOR, DO HEREBY DEPOSE AND SAY THAT THIS MAP, CONSISTING OF SIX SHEETS, NUMBERED ONE THROUGH SIX, INCLUSIVE, HAS BEEN CORRECTLY DRAWN TO THE DESIGNATED SCALE, ON OR BEFORE APRIL 18, 2011, BASED ON A SURVEY MADE UNDER MY SUPERVISION AND DIRECTION, SETTING UPON AVAL 1303 OF RECORDED SURVEY DOCUMENTS, VETS AND OTHER DOCUMENTS BY THE LYON COUNTY RECORDER'S OFFICE, US BUREAU OF LAND MANAGEMENT, THE WALKER RIVER IRRIGATION DISTRICT, THE US FEDERAL WATERWAYS OFFICE (WALKER RIVER), AND THE NEVADA DIVISION OF WATER RESOURCES THAT THIS MAP TRULY AND CORRECTLY REPRESENTS THE COSTING AND PROPOSED RIGHTS OF CREATION AND PLACES OF USE OF A PORTION OF THE WALKER RIVER AND ITS TRIBUTARIES, AS DESCRIBED BY THAT PARTICULAR DOCUMENT ENTITLED UNITED STATES VS. WALKER RIVER IRRIGATION DISTRICT ET AL, DOCKET C-125, CLARIFIED 23, 23A, 33, 44, 42, 46, 49 FOR WILDLIFE PURPOSES IN ACCORDANCE WITH NRS CHAPTER 533 IN LYON COUNTY, NEVADA.

*Michael D. Buschelman*  
MICHAEL D. BUSCHELMAN, SURV 4712

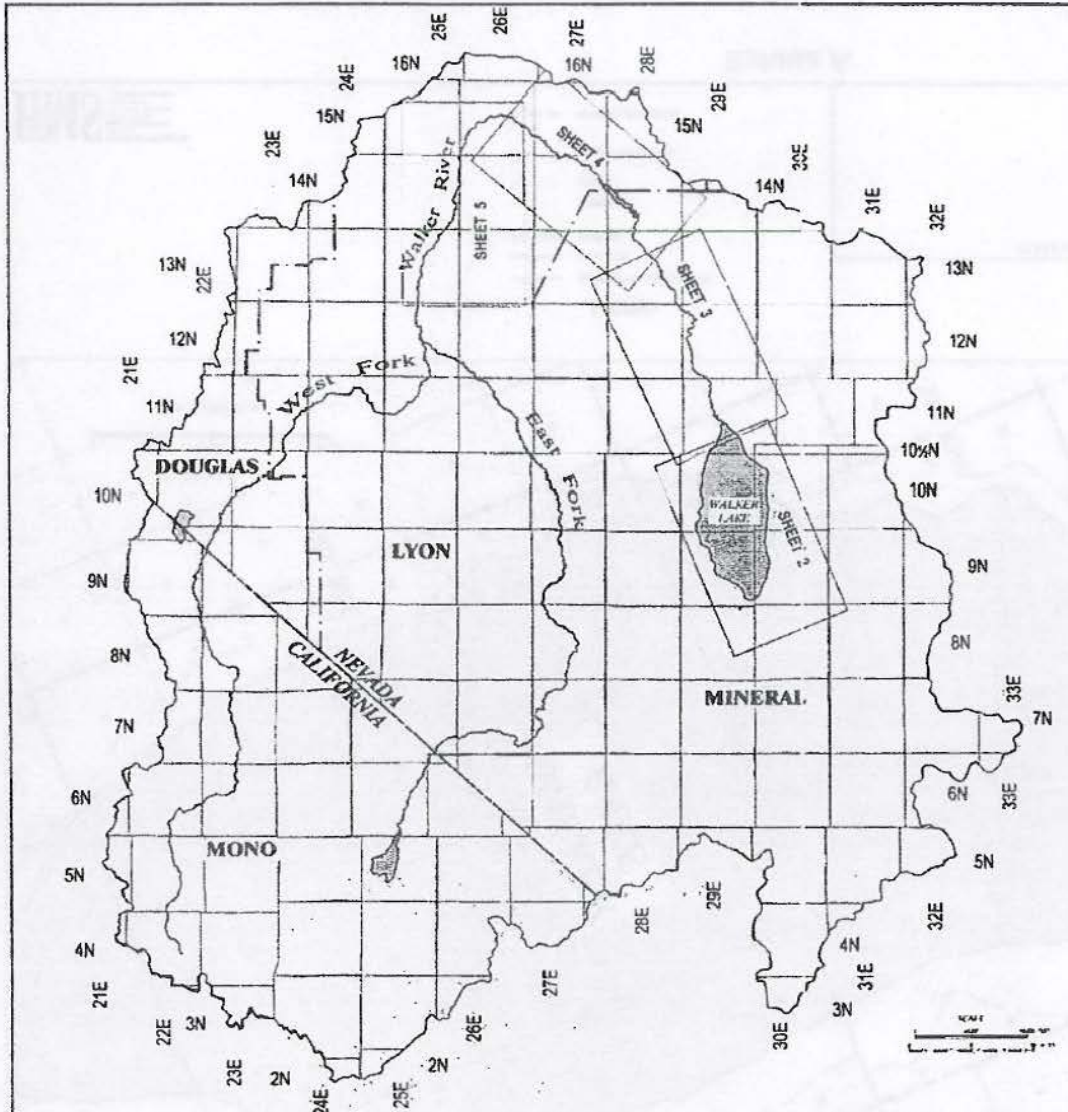
SUBSCRIBED AND SWORN TO BEFORE ME  
THIS 14<sup>th</sup> DAY OF May 2011  
NOTARY PUBLIC IN AND FOR Washoe COUNTY, NEVADA  
BY COMMISSION EXPIRES July 16, 2011  
*Notary Signature*



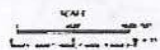
**BASIS OF BEARING**  
1. STATE PLANE - NEVADA WEST, NAD 83 (FEET)  
2. ALL PUBLIC LAND SURVEY DATA SHOWN BY BOUNDARY BASE & METROKAY FIELD DATA.

**REFERENCES**  
1. PUBLIC LAND SURVEY SYSTEM (PLSS) EXTRACTED FROM THE USGS GEOGRAPHIC COORDINATE DATABASE (GCOG), STATE PLANE NEVADA WEST, NAD 83 (FEET)  
2. WALKER RIVER BASH BOUNDARY DERIVED FROM THE GIS DATASET "STATE ENGINEER, BASH, BOUNDARIES 99", DATUM 6/17/98, PROVIDED BY THE NEVADA DIVISION OF WATER RESOURCES; AND THE CALWATER HYDROGRAPHIC BASHS 1-34200 GIS DATASET, PROVIDED BY THE WRC  
3. WALKER LAKE, GOSPELPORT RESERVOIR, TORIA LAKE RESERVOIR, AND WEBER RESERVOIR BOUNDARIES TAKEN FROM USGS DIGITAL LINE GRAPH (DLG) 1-34200  
4. WALKER RIVER (EAST, WEST, AND MAIN FORKS) CENTERLINES AND CHANNEL BOUNDARIES OBTAINED FROM LYON COUNTY 2007 AERIAL PHOTOGRAPHY (1 FT RESOLUTION), AND USDA 2006 NATIONAL AGRICULTURAL INVENTORY PROGRAM (NAIP) PHOTOGRAPHY (10 RESOLUTION)

Sheet 1 of 6



**LEGEND**  
 - - - WALKER RIVER BASIN BOUNDARY  
 - - - COUNTY LINE  
 - - - STATE LINE  
 - - - TOWNSHIP



STATE ENGINEER'S USE



Michael D. Buschelman Consulting, Inc.  
 P.O. Box 1000 (Box 1037)  
 Sparks, Nevada 89421  
 (775) 355-9625 Office 781-9428 FAX

MAP TO ACCOMPANY APPLICATION 80700 TO CHANGE THE PLACE AND MANNER OF USE OF PORTIONS OF THE WALKER RIVER DECREE C-125, CLARIFIED 23, 23A, 33, 44, 42, AND 46 FOR WILDLIFE PURPOSES IN ACCORDANCE WITH NRS CHAPTER 533 BY THE NATIONAL FISH AND WILDLIFE FOUNDATION FOR THE WALKER RIVER AND ITS TRIBUTARIES

LYON/MINERAL COUNTIES NEVADA

Exhibit A

81704 80700



- LEGEND**
- WALKER RIVER BOUNDARY
  - COUNTY LINE
  - STATE LINE
  - TOWNSHIP
  - RANGE
  - MONUMENTS PER BLM
  - PROPOSED PLACE OF LIFT

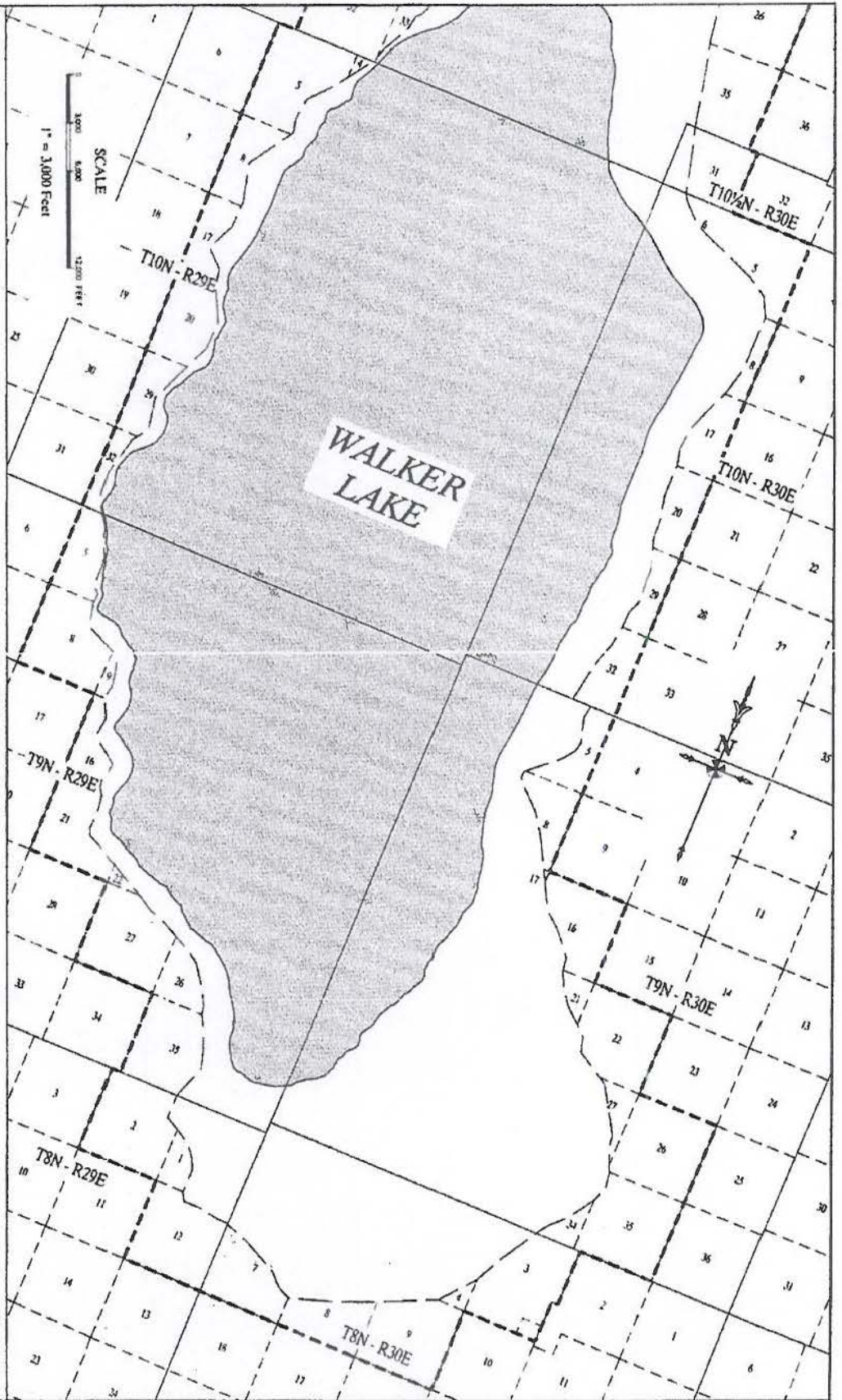


Exhibit A

**STATE ENGINEER'S USE**

1. DATE OF REPAIRING  
 2. ALL PUBLIC LAND BEING SAID SHOWN IN  
 RECORD SHOULD BE A USUALLY PRACTICE

Michael D. Bookdian Consulting, Inc.  
 10000 S. 10th St.  
 Suite 100  
 Las Vegas, NV 89135

MAP TO ACCOMPANY APPLICATION TO CHANGE THE PLACE AND  
 MANNER OF USE OF PORTIONS OF THE WALKER RIVER DECREE C-152,  
 CHAMBERS 23, 29, 35, 44, 67, AND 88  
 WALKER RIVER IN ACCORDANCE WITH  
 BLM CHW/TER-333

THE NATIONAL FISH AND WILDLIFE FOUNDATION  
 c/o THE WALKER RIVER AND ITS TRIBUTARIES  
 LYON/MINERAL COUNTIES  
 NEVADA

Sheet 2 of 6

81704 80700



H.M.S. ENGINEERING, INC.  
 1000 W. WASHINGTON ST.  
 SUITE 100  
 CARSON CITY, NEVADA 89401  
 (702) 885-1111  
 FAX (702) 885-1112

WALKER RIVER BASIN BOARD  
 COUNTY LINE  
 STATE LINE  
 TOWNSHIP  
 SECTION  
 WALKER RIVER BASIN  
 PROPOSED LINE OF USE

**LEGEND**  
 WALKER RIVER BASIN BOARD  
 COUNTY LINE  
 STATE LINE  
 TOWNSHIP  
 SECTION  
 WALKER RIVER BASIN  
 PROPOSED LINE OF USE

**BASIS OF BEARING**  
 1. STATE PLANS - APPROXIMATE, NOT TO SCALE  
 2. ALL TIES TO A POINT ON A SURVEY  
 3. ALL TIES TO A POINT ON A SURVEY  
 4. ALL TIES TO A POINT ON A SURVEY  
 5. ALL TIES TO A POINT ON A SURVEY

Michael D. Buchheit Consulting, Inc.  
 1000 W. WASHINGTON ST.  
 SUITE 100  
 CARSON CITY, NEVADA 89401  
 (702) 885-1111  
 FAX (702) 885-1112



Sheet 3 of 6

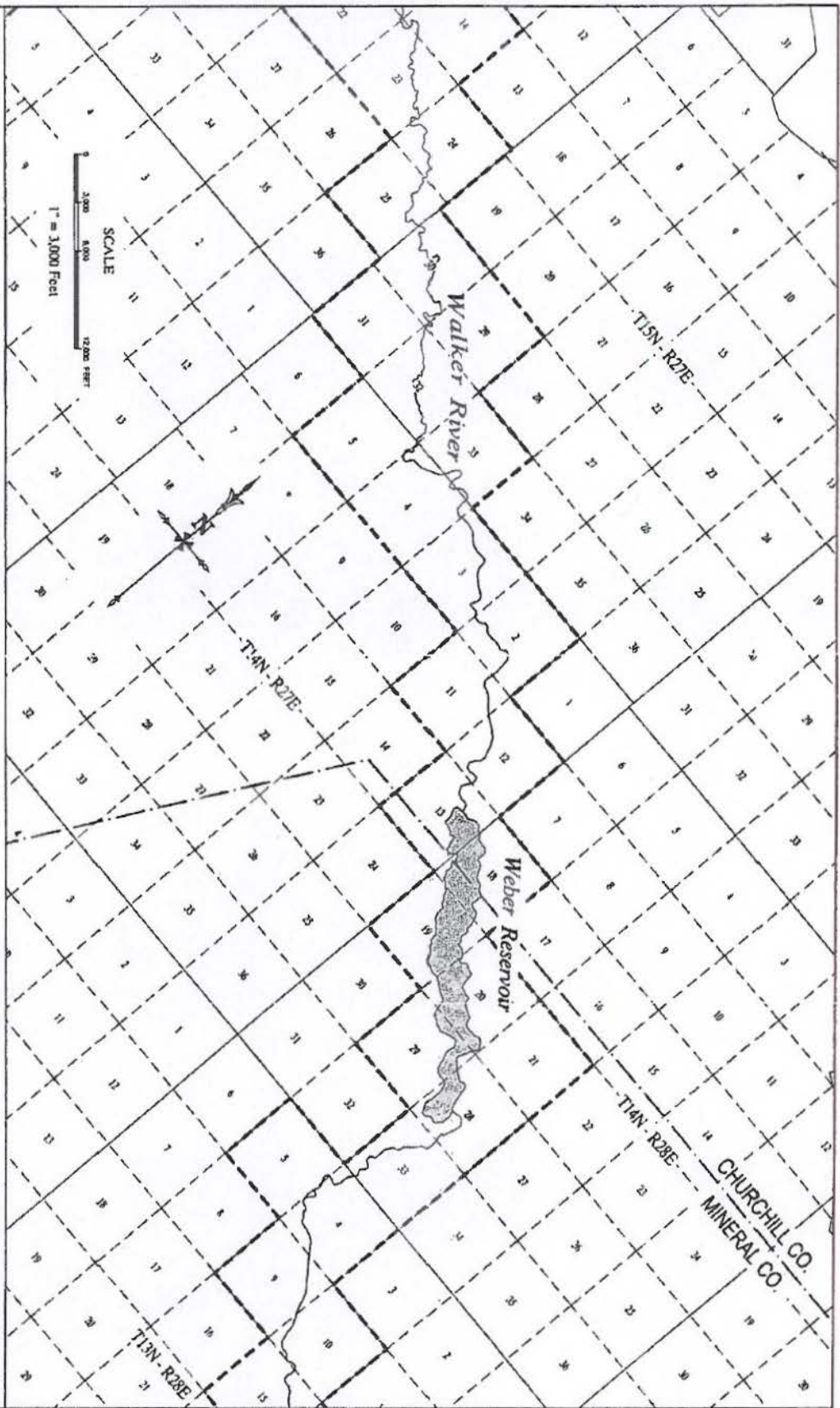
Exhibit A

81704 80700

NEVADA

FILED  
 Mar 11 1988

WILDLIFE PURPOSES IN ACCORDANCE WITH  
 THE NATIONAL FISH AND WILDLIFE FOUNDATION  
 AND THE WALKER RIVER AND ITS TRIBUTARIES  
 LYONMINERAL COUNTIES



SCALE  
1" = 3,000 Feet  
3,000 6,000 12,000 FEET

- LEGEND**
- WALKER RIVER BOUNDARY
  - QUARTY LINE
  - PATTER LINE
  - TOWNSHIP SECTION
  - - - - - PROPOSED PLACE OF LOT

Exhibit A

**STATE ENGINEER'S USE**

**DATE:** \_\_\_\_\_

**FILED**  
MAY 14 1987

**BASIS OF REISSUANCE**  
 1. ALL PUBLIC LAND INTERESTS SHOWN  
 HEREIN SHOW DATE & SECTION RECORDS

Michael D. Buehler  
 Surveyor  
 1715 US HWY 95, SUITE 100  
 RENO, NEVADA 89502

Sheet 4 of 6

**THE NATIONAL FISH AND WILDLIFE FOUNDATION**  
 AND  
 THE WALKER RIVER AND ITS TRIBUTARIES  
 LYONS/MINERAL COUNTIES  
 NEVADA

81704 80700



H.M.S. CONSULTANTS  
 1000 S. RAYBURN AVENUE  
 SUITE 100  
 LAS VEGAS, NV 89102  
 (702) 735-1100  
 FAX (702) 735-1101  
 WWW.HMSCON.COM

Exhibit A

STATE ENGINEER'S USE

THE NATIONAL FISH AND WILDLIFE FOUNDATION  
 THE WALKER RIVER AND ITS TRIBUTARIES  
 LYON/MINERAL COUNTIES  
 NEVADA

**LEGEND**  
 --- WALKER RIVER FISH PASSAGEWAY  
 --- BOUNDARY LINE  
 --- EJECTUM LINE  
 --- DRAINAGE  
 --- SECTION  
 --- ORIGINALLY  
 --- PROPOSED PLACE OF USE

**BASIS OF BEARING:**  
 1. STATE PLAT - Nevada West, 1st Edition  
 2. ALL OTHERS - LAMB'S CORNER OR 1/4 SECTION  
 3. MONUMENT BEARING, DISTANCE & BEARING PLAT BEARING

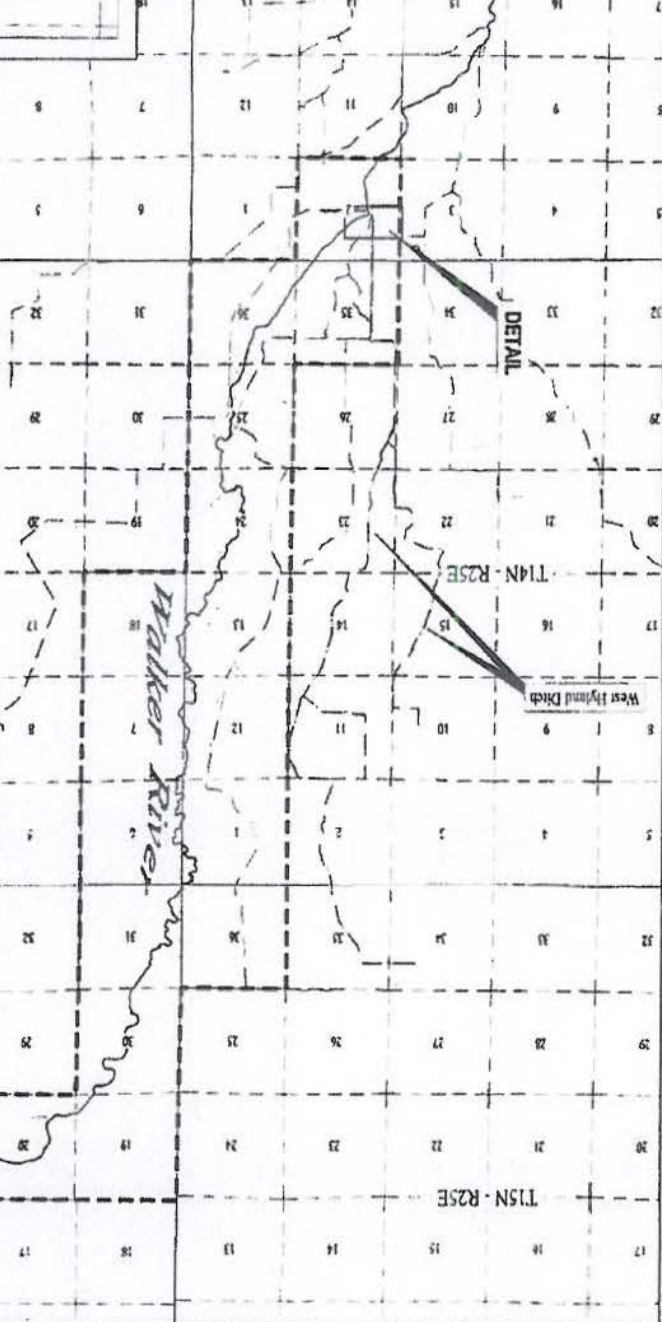
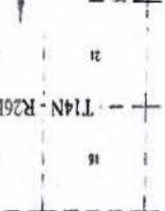
Section 2, T.13N., R.25E., M.D.B. 8M.

Walker River

DETAIL  
 SW¼ NW¼  
 SE¼ NW¼

FOUND 1/4 CORNER  
 58' REBAR AND CAP  
 R.S. 4045

PROPOSED POINT OF DIVERSION  
 - APPLICATION 80700  
 VARIATION = 13° 3' EAST FOR 1221/2002  
 - SEE PERMIT 89525 FOR REFERENCE



DETAIL

DETAIL

West Hybrid Ditch

T15N - R26E

T14N - R26E

T13N - R25E

T13N - R25E

T14N - R26E

T15N - R26E

T15N - R26E

T15N - R26E

T15N - R26E

T15N - R26E

T15N - R26E

T15N - R26E

T15N - R26E

T15N - R26E

T15N - R26E

T15N - R26E

T15N - R26E

T15N - R26E

T15N - R26E

T15N - R26E

T15N - R26E

T15N - R26E

T15N - R26E

T15N - R26E

T15N - R26E

T15N - R26E

T15N - R26E

T15N - R26E

T15N - R26E

T15N - R26E

T15N - R26E

T15N - R26E

T15N - R26E

T15N - R26E

T15N - R26E

T15N - R26E

T15N - R26E

T15N - R26E

T15N - R26E

T15N - R26E

T15N - R26E

T15N - R26E

T15N - R26E

T15N - R26E

T15N - R26E

T15N - R26E

T15N - R26E

T15N - R26E

T15N - R26E

T15N - R26E

T15N - R26E

T15N - R26E

T15N - R26E

T15N - R26E

T15N - R26E

T15N - R26E

T15N - R26E

T15N - R26E

T15N - R26E

T15N - R26E

T15N - R26E

T15N - R26E

T15N - R26E

T15N - R26E

T15N - R26E

T15N - R26E

T15N - R26E

T15N - R26E

T15N - R26E

T15N - R26E

T15N - R26E

T15N - R26E

T15N - R26E

T15N - R26E

T15N - R26E

T15N - R26E

T15N - R26E

T15N - R26E

T15N - R26E

T15N - R26E

T15N - R26E

T15N - R26E

T15N - R26E

T15N - R26E

T15N - R26E

T15N - R26E

T15N - R26E

T15N - R26E

T15N - R26E

T15N - R26E

T15N - R26E

T15N - R26E

T15N - R26E

T15N - R26E

T15N - R26E

T15N - R26E

T15N - R26E

T15N - R26E

T15N - R26E

T15N - R26E

T15N - R26E

T15N - R26E

T15N - R26E

T15N - R26E

T15N - R26E

T15N - R26E

T15N - R26E

T15N - R26E

T15N - R26E

T15N - R26E

T15N - R26E

T15N - R26E

T15N - R26E

T15N - R26E

T15N - R26E

T15N - R26E

T15N - R26E

T15N - R26E

T15N - R26E

T15N - R26E

T15N - R26E

T15N - R26E

T15N - R26E

T15N - R26E

T15N - R26E

T15N - R26E

T15N - R26E

T15N - R26E

T15N - R26E

T15N - R26E

T15N - R26E

T15N - R26E

T15N - R26E

T15N - R26E

T15N - R26E

T15N - R26E

T15N - R26E

T15N - R26E

T15N - R26E

T15N - R26E

T15N - R26E

T15N - R26E

T15N - R26E

T15N - R26E

T15N - R26E

T15N - R26E

T15N - R26E

T15N - R26E

T15N - R26E

T15N - R26E

T15N - R26E

T15N - R26E

T15N - R26E

T15N - R26E

T15N - R26E

T15N - R26E

T15N - R26E

T15N - R26E

T15N - R26E

T15N - R26E

T15N - R26E

T15N - R26E

Sheet 5 of 6

Michael D. Buehler Consulting, Inc.  
 3441 West 8th Street  
 Suite 100  
 Las Vegas, NV 89102  
 (702) 735-1100  
 (702) 735-1101  
 WWW.MDCON.COM

MAP TO ACCOMPANY APPLICATION FOR DIVERSION OF THE PLACE AND  
 MANNER OF USE OF PORTIONS OF THE WALKER RIVER DISTRICT C-15  
 CLAIMS 21, 22, 23, 24, 25, 26, 27, 28, 29, 30, 31, 32, 33, 34, 35, 36, 37, 38, 39, 40, 41, 42, 43, 44, 45, 46, 47, 48, 49, 50, 51, 52, 53, 54, 55, 56, 57, 58, 59, 60, 61, 62, 63, 64, 65, 66, 67, 68, 69, 70, 71, 72, 73, 74, 75, 76, 77, 78, 79, 80, 81, 82, 83, 84, 85, 86, 87, 88, 89, 90, 91, 92, 93, 94, 95, 96, 97, 98, 99, 100, 101, 102, 103, 104, 105, 106, 107, 108, 109, 110, 111, 112, 113, 114, 115, 116, 117, 118, 119, 120, 121, 122, 123, 124, 125, 126, 127, 128, 129, 130, 131, 132, 133, 134, 135, 136, 137, 138, 139, 140, 141, 142, 143, 144, 145, 146, 147, 148, 149, 150, 151, 152, 153, 154, 155, 156, 157, 158, 159, 160, 161, 162, 163, 164, 165, 166, 167, 168, 169, 170, 171, 172, 173, 174, 175, 176, 177, 178, 179, 180, 181, 182, 183, 184, 185, 186, 187, 188, 189, 190, 191, 192, 193, 194, 195, 196, 197, 198, 199, 200, 201, 202, 203, 204, 205, 206, 207, 208, 209, 210, 211, 212, 213, 214, 215, 216, 217, 218, 219, 220, 221, 222, 223, 224, 225, 226, 227, 228, 229, 230, 231, 232, 233, 234, 235, 236, 237, 238, 239, 240, 241, 242, 243, 244, 245, 246, 247, 248, 249, 250, 251, 252, 253, 254, 255, 256, 257, 258, 259, 260, 261, 262, 263, 264, 265, 266, 267, 268, 269, 270, 271, 272, 273, 274, 275, 276, 277, 278, 279, 280, 281, 282, 283, 284, 285, 286, 287, 288, 289, 290, 291, 292, 293, 294, 295, 296, 297, 298, 299, 300, 301, 302, 303, 304, 305, 306, 307, 308, 309, 310, 311, 312, 313, 314, 315, 316, 317, 318, 319, 320, 321, 322, 323, 324, 325, 326, 327, 328, 329, 330, 331, 332, 333, 334, 335, 336, 337, 338, 339, 340, 341, 342, 343, 344, 345, 346, 347, 348, 349, 350, 351, 352, 353, 354, 355, 356, 357, 358, 359, 360, 361, 362, 363, 364, 365, 366, 367, 368, 369, 370, 371, 372, 373, 374, 375, 376, 377, 378, 379, 380, 381, 382, 383, 384, 385, 386, 387, 388, 389, 390, 391, 392, 393, 394, 395, 396, 397, 398, 399, 400, 401, 402, 403, 404, 405, 406, 407, 408, 409, 410, 411, 412, 413, 414, 415, 416, 417, 418, 419, 420, 421, 422, 423, 424, 425, 426, 427, 428, 429, 430, 431, 432, 433, 434, 435, 436, 437, 438, 439, 440, 441, 442, 443, 444, 445, 446, 447, 448, 449, 450, 451, 452, 453, 454, 455, 456, 457, 458, 459, 460, 461, 462, 463, 464, 465, 466, 467, 468, 469, 470, 471, 472, 473, 474, 475, 476, 477, 478, 479, 480, 481, 482, 483, 484, 485, 486, 487, 488, 489, 490, 491, 492, 493, 494, 495, 496, 497, 498, 499, 500, 501, 502, 503, 504, 505, 506, 507, 508, 509, 510, 511, 512, 513, 514, 515, 516, 517, 518, 519, 520, 521, 522, 523, 524, 525, 526, 527, 528, 529, 530, 531, 532, 533, 534, 535, 536, 537, 538, 539, 540, 541, 542, 543, 544, 545, 546, 547, 548, 549, 550, 551, 552, 553, 554, 555, 556, 557, 558, 559, 560, 561, 562, 563, 564, 565, 566, 567, 568, 569, 570, 571, 572, 573, 574, 575, 576, 577, 578, 579, 580, 581, 582, 583, 584, 585, 586, 587, 588, 589, 590, 591, 592, 593, 594, 595, 596, 597, 598, 599, 600, 601, 602, 603, 604, 605, 606, 607, 608, 609, 610, 611, 612, 613, 614, 615, 616, 617, 618, 619, 620, 621, 622, 623, 624, 625, 626, 627, 628, 629, 630, 631, 632, 633, 634, 635, 636, 637, 638, 639, 640, 641, 642, 643, 644, 645, 646, 647, 648, 649, 650, 651, 652, 653, 654, 655, 656, 657, 658, 659, 660, 661, 662, 663, 664, 665, 666, 667, 668, 669, 670, 671, 672, 673, 674, 675, 676, 677, 678, 679, 680, 681, 682, 683, 684, 685, 686, 687, 688, 689, 690, 691, 692, 693, 694, 695, 696, 6