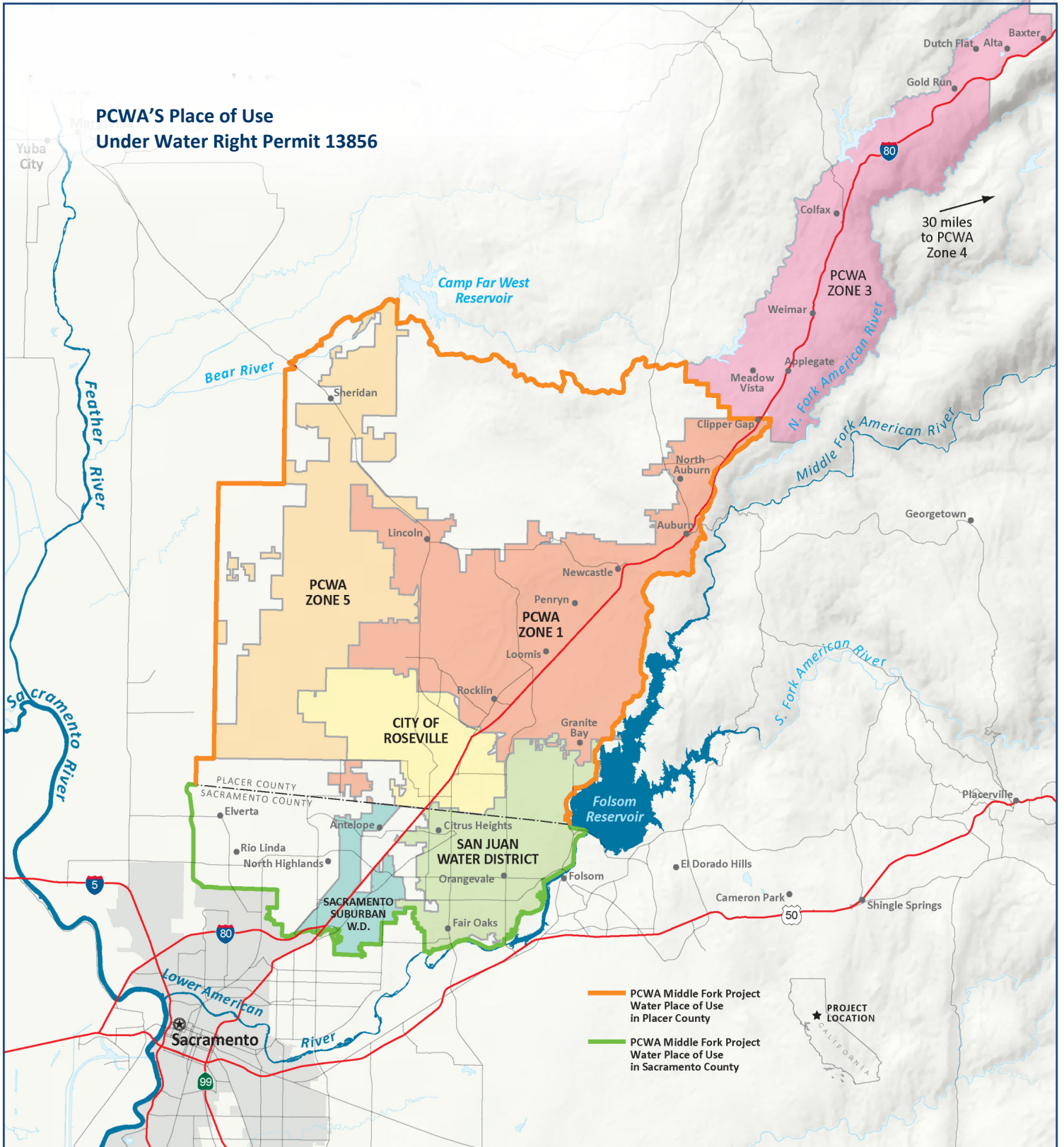
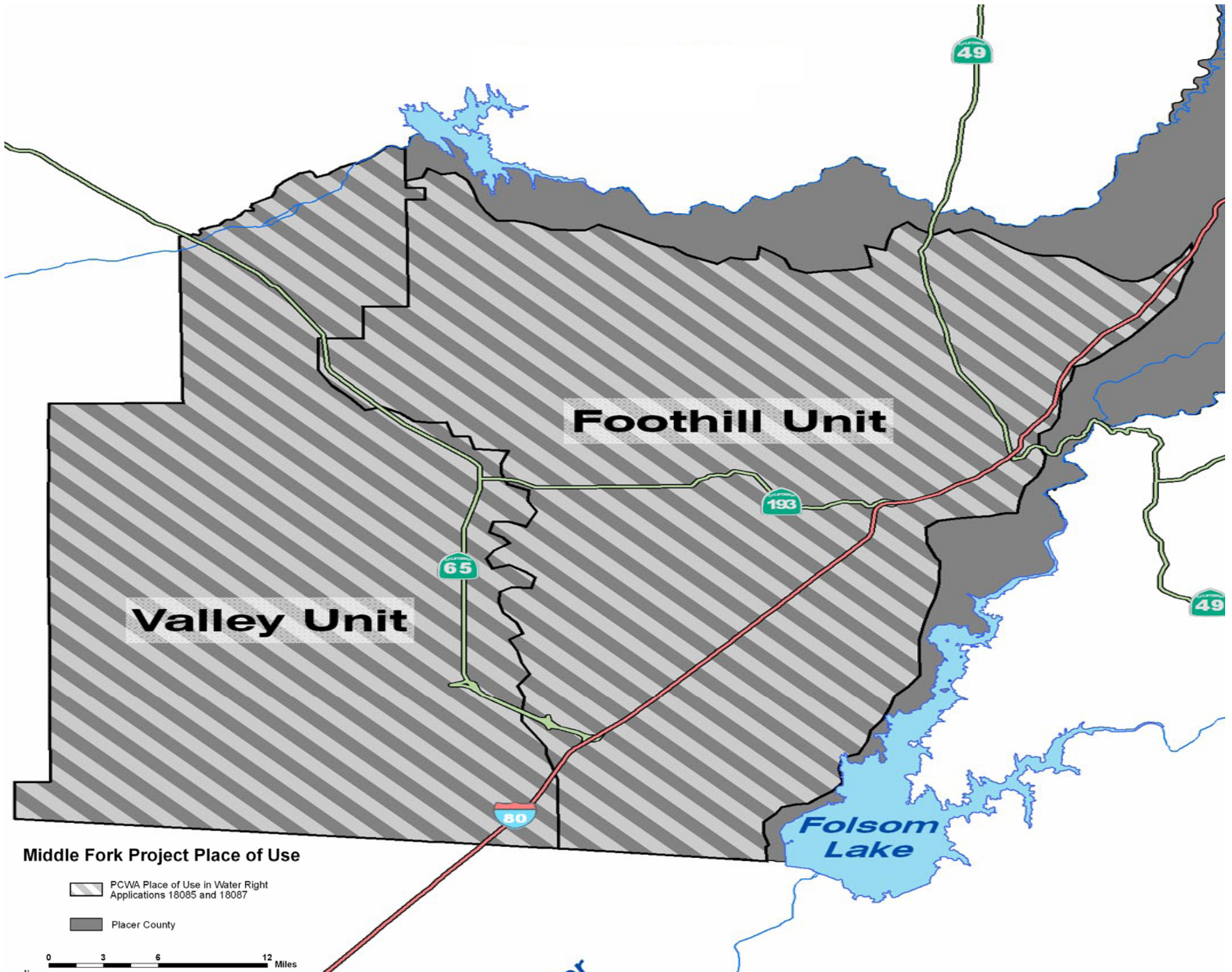


Attachment D

PCWA POU

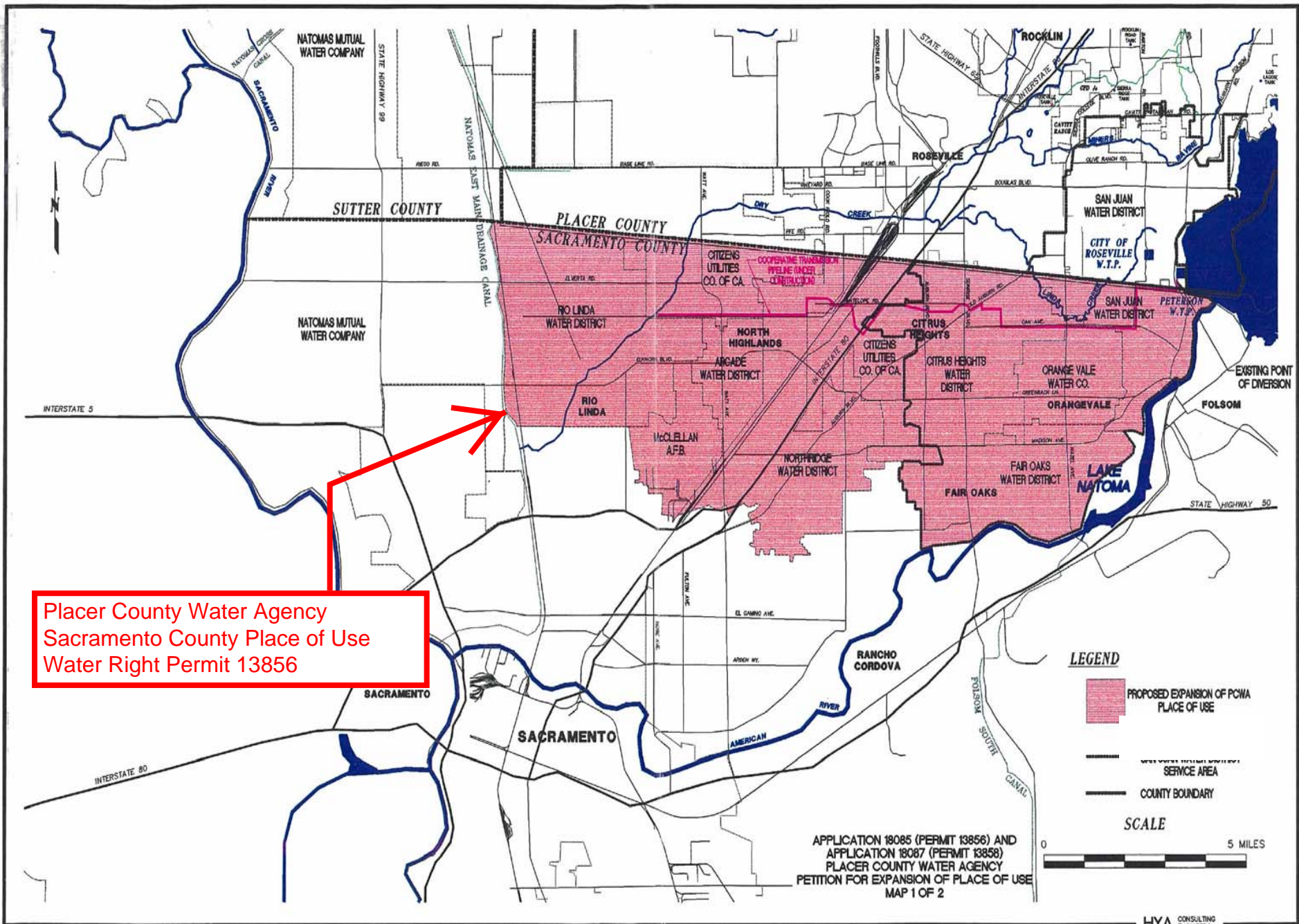




Middle Fork Project Place of Use

-  PCWA Place of Use in Water Right Applications 18085 and 18087
-  Placer County

0 3 6 12 Miles



Placer County Water Agency
 Sacramento County Place of Use
 Water Right Permit 13856

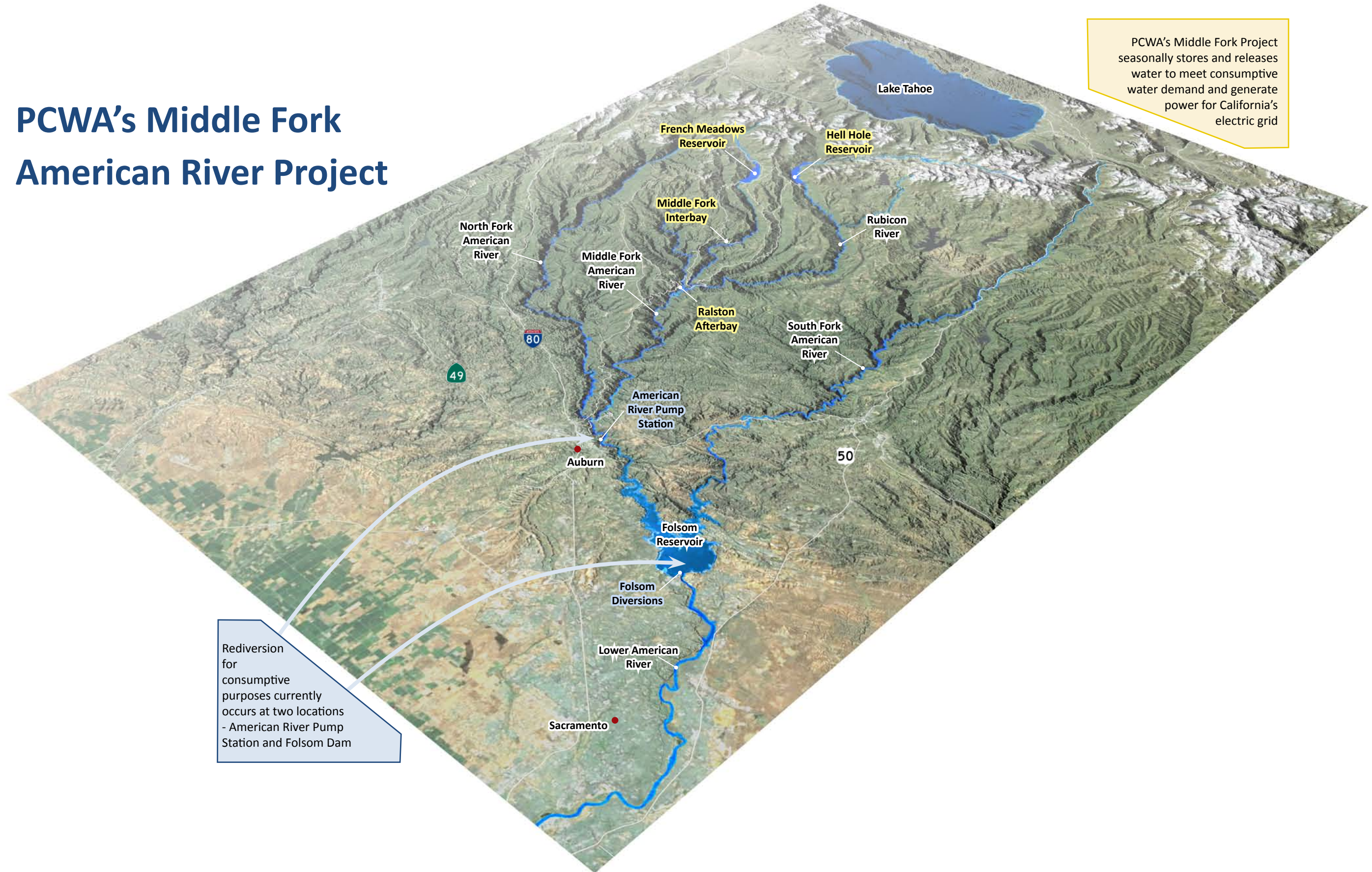
LEGEND
 [Red shaded area] PROPOSED EXPANSION OF PCWA PLACE OF USE
 [Dashed line] SERVICE AREA
 [Solid line] COUNTY BOUNDARY

SCALE
 0 5 MILES

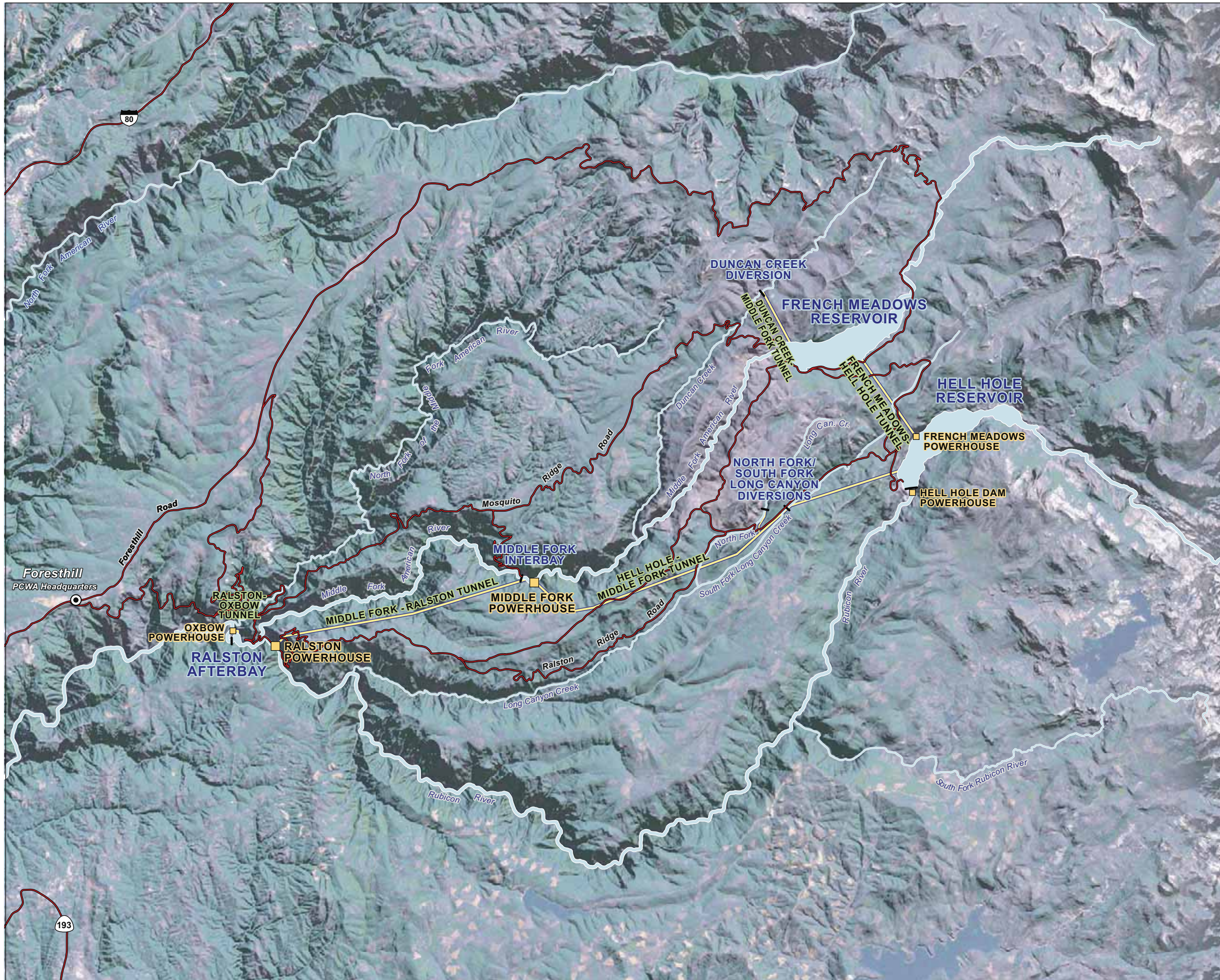
APPLICATION 18085 (PERMIT 13856) AND
 APPLICATION 18087 (PERMIT 13858)
 PLACER COUNTY WATER AGENCY
 PETITION FOR EXPANSION OF PLACE OF USE
 MAP 1 OF 2

PCWA's Middle Fork American River Project

PCWA's Middle Fork Project seasonally stores and releases water to meet consumptive water demand and generate power for California's electric grid



Rediversion for consumptive purposes currently occurs at two locations - American River Pump Station and Folsom Dam



Middle Fork Project Facts and Figures

PROJECT SUMMARY

Project Completed	1967
Total Energy Production Capacity:	223.7 MW
Average Annual Energy Production:	1,039,078 MWh
Total Gross Water Storage:	345,560 acre-feet (af)
Earth and Rockfill Dams:	11,900,000 cubic yards
Concrete Dams and Diversions:	94,000 cubic yards
Tunnels and Penstocks:	23.2 miles

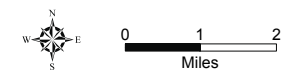
RESERVOIRS AND DIVERSIONS	Elevation	Storage Capacity
Duncan Creek Diversion	5,265'	20 af
French Meadows Reservoir	5,244.5'	134,993 af
Hell Hole Reservoir	4,630'	207,590 af
North Fork Long Canyon Diversion	4,716'	0.39 af
South Fork Long Canyon Diversion	4,640'	0.83 af
Middle Fork Interbay	2,529'	175 af
Ralston Afterbay	1,179'	2,782 af

POWERHOUSES	Elevation	Production Capacity
French Meadows Powerhouse	4,630'	15.3 MW
Hell Hole Powerhouse	4,240'	0.73 MW
Middle Fork Powerhouse	2,529'	122.4 MW
Ralston Powerhouse	1,175'	79.2 MW
Oxbow Powerhouse	1,089'	6.1 MW

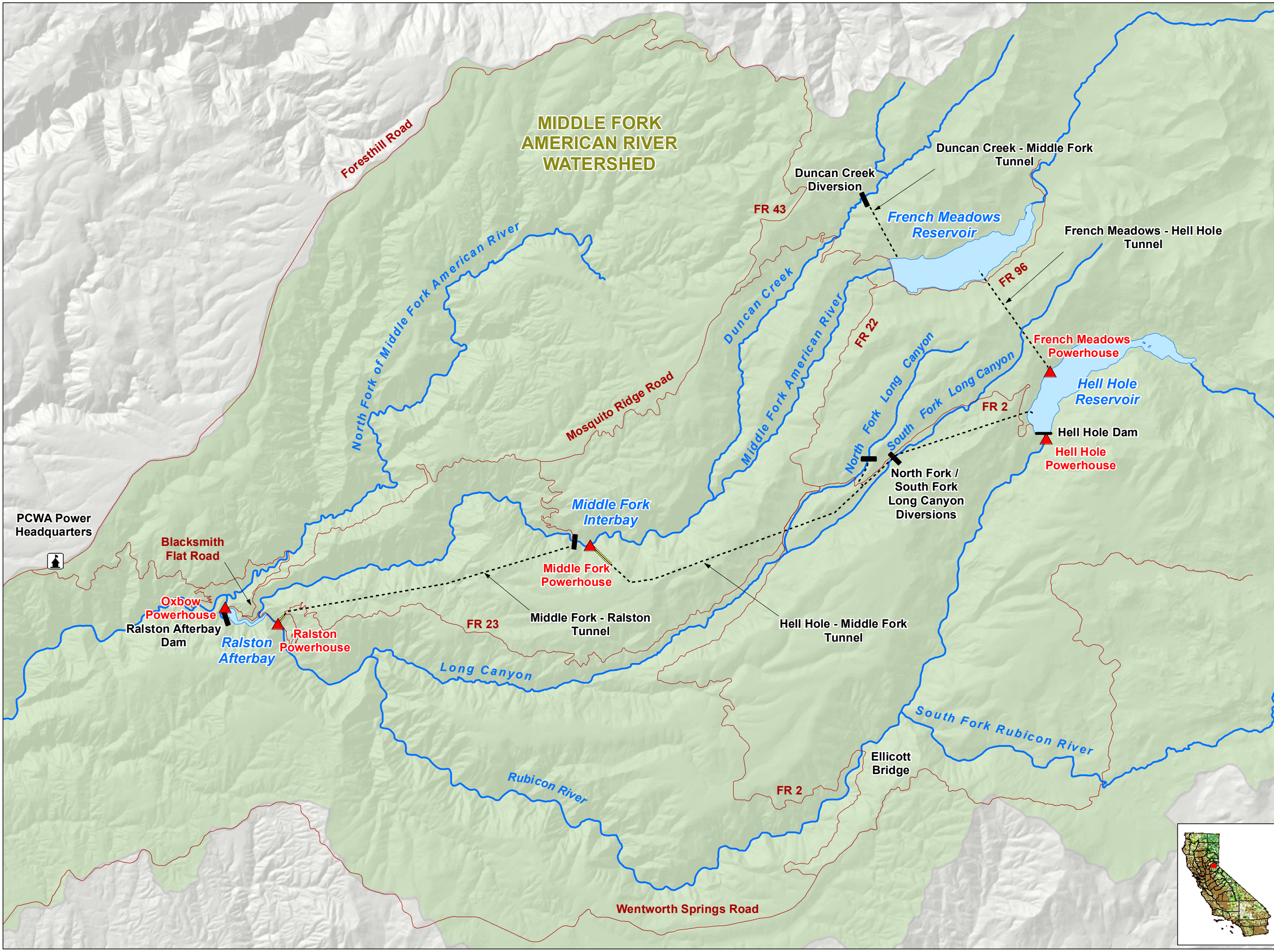
TUNNELS	Discharge Capacity
Duncan Creek-Middle Fork Tunnel	- 400 cfs
French Meadows-Hell Hole Tunnel	- 400 cfs
Hell Hole-Middle Fork Tunnel	- 920 cfs
Middle Fork-Ralston Tunnel	- 836 cfs
Ralston-Oxbow Tunnel	- 1,088 cfs



Placer County Water Agency
Middle Fork American River Project
Middle Fork Project and Vicinity



Rev. Date: 1/27/11



- Project Facilities**
- ▲ Powerhouse
 - Dam
 - - - - Tunnel
 - ==== Penstock
- Transportation**
- Road
- Hydrography**
- Watercourse
 - Water Body
 - Middle Fork American River Watershed*

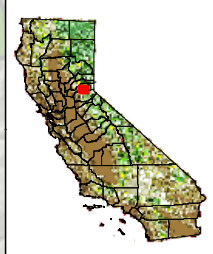
*Modified from Calwater Ver. 2.2 to represent drainage above high-water mark of Folsom Lake

PCWA Power Headquarters



Placer County Water Agency
Middle Fork American River Project

Middle Fork American River Project and Vicinity



0 0.5 1 2 Miles

Projection: CA State Plane, Zone 2
Datum: NAD 83

Date: 8/17/10