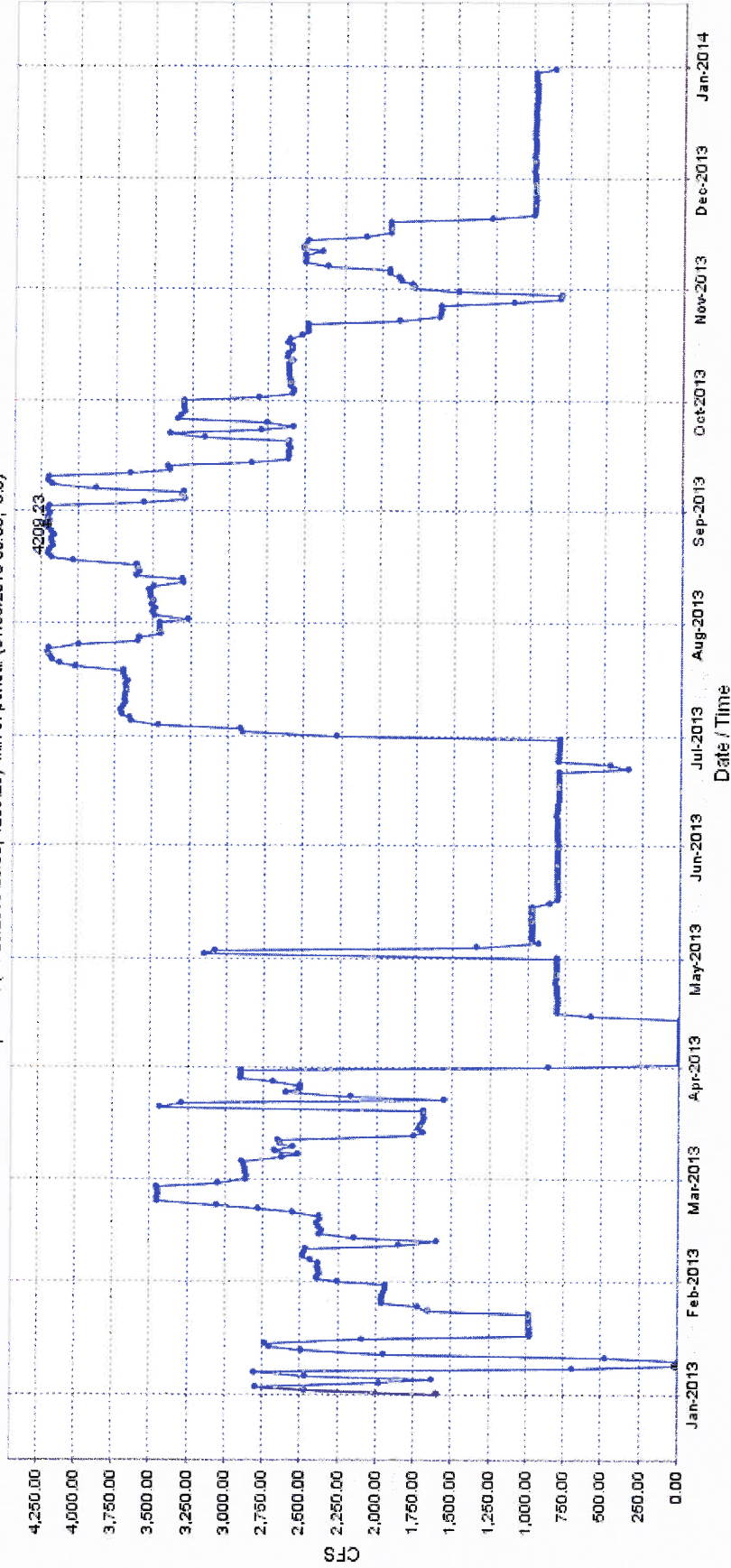


### TRACY PUMPING PLANT ( TRP )

Date from 12/31/2012 13:45 through 12/31/2013 13:45 Duration : 365 days  
Max of period : (06/28/2013 00:00, 4209.23) Min of period: (01/09/2013 00:00, 0.0)

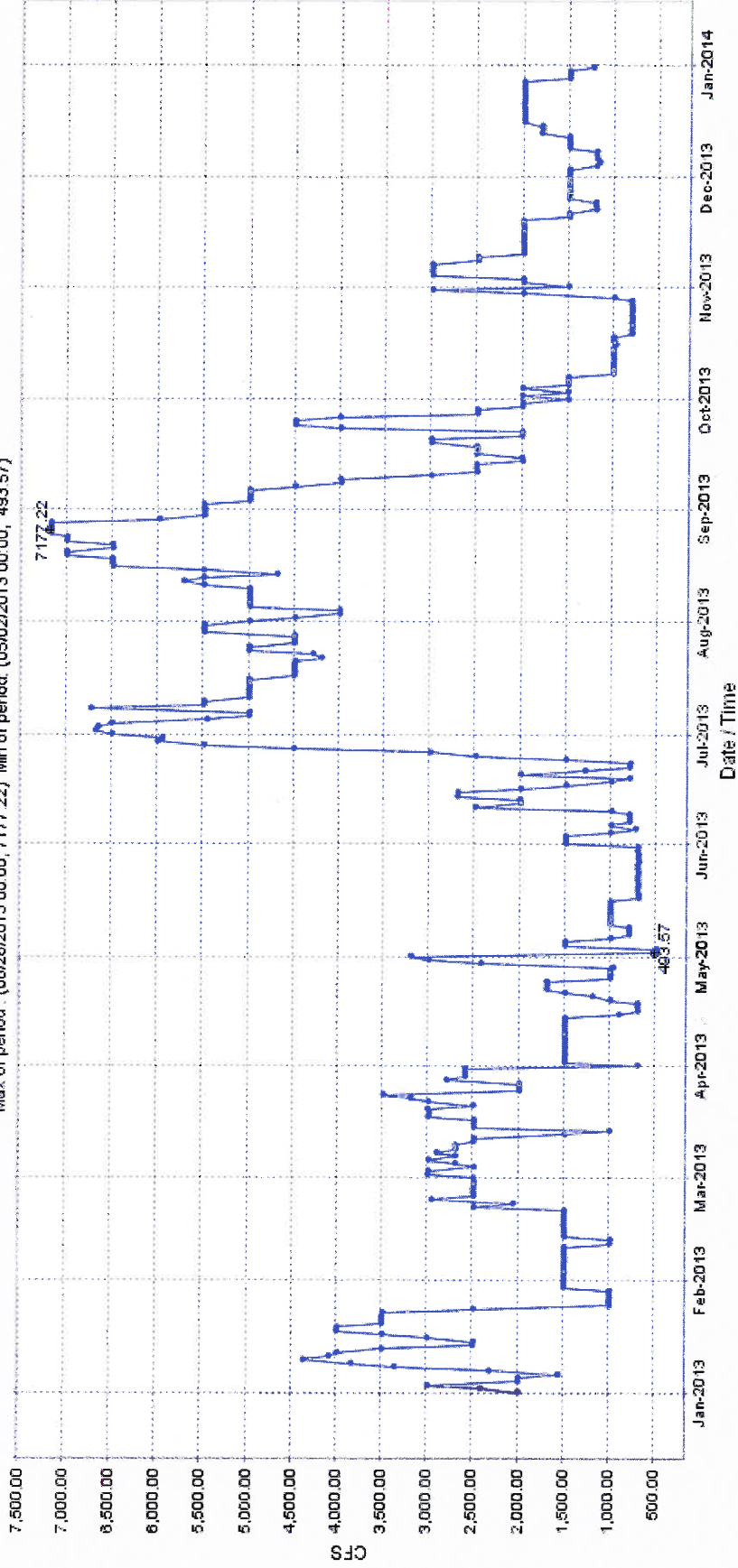


Generated on Tue Aug 30 13:49:59 PDT 2016

Plot all TRP Sensors | Real-Time TRP Data | TRP Data | Daily TRP Data | Show TRP Map | TRP Info

### CLIFTON COURT (CLC)

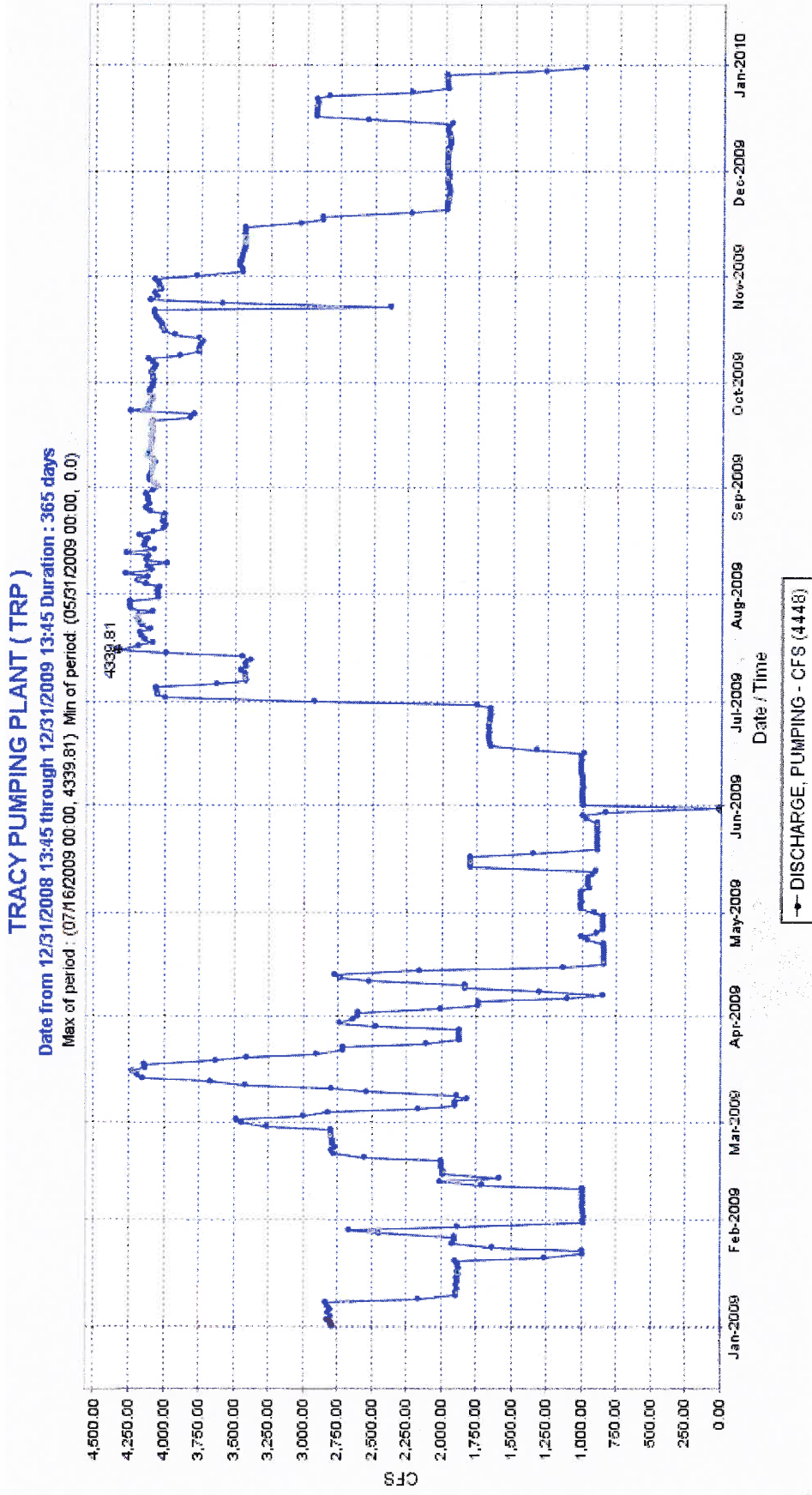
Date from 12/31/2012 13:42 through 12/31/2013 13:42 Duration : 365 days  
Max of period : (08/26/2013 00:00, 7177.22) Min of period: (05/02/2013 00:00, 493.57)



RESERVOIR INFLOW - CFS (16520)

Generated on Tue Aug 30 13:43:16 PDT 2016

Plot all CLC Sensors | Real-Time CLC Data | CLC Data | Daily CLC Data | Show CLC Map | CLC Info

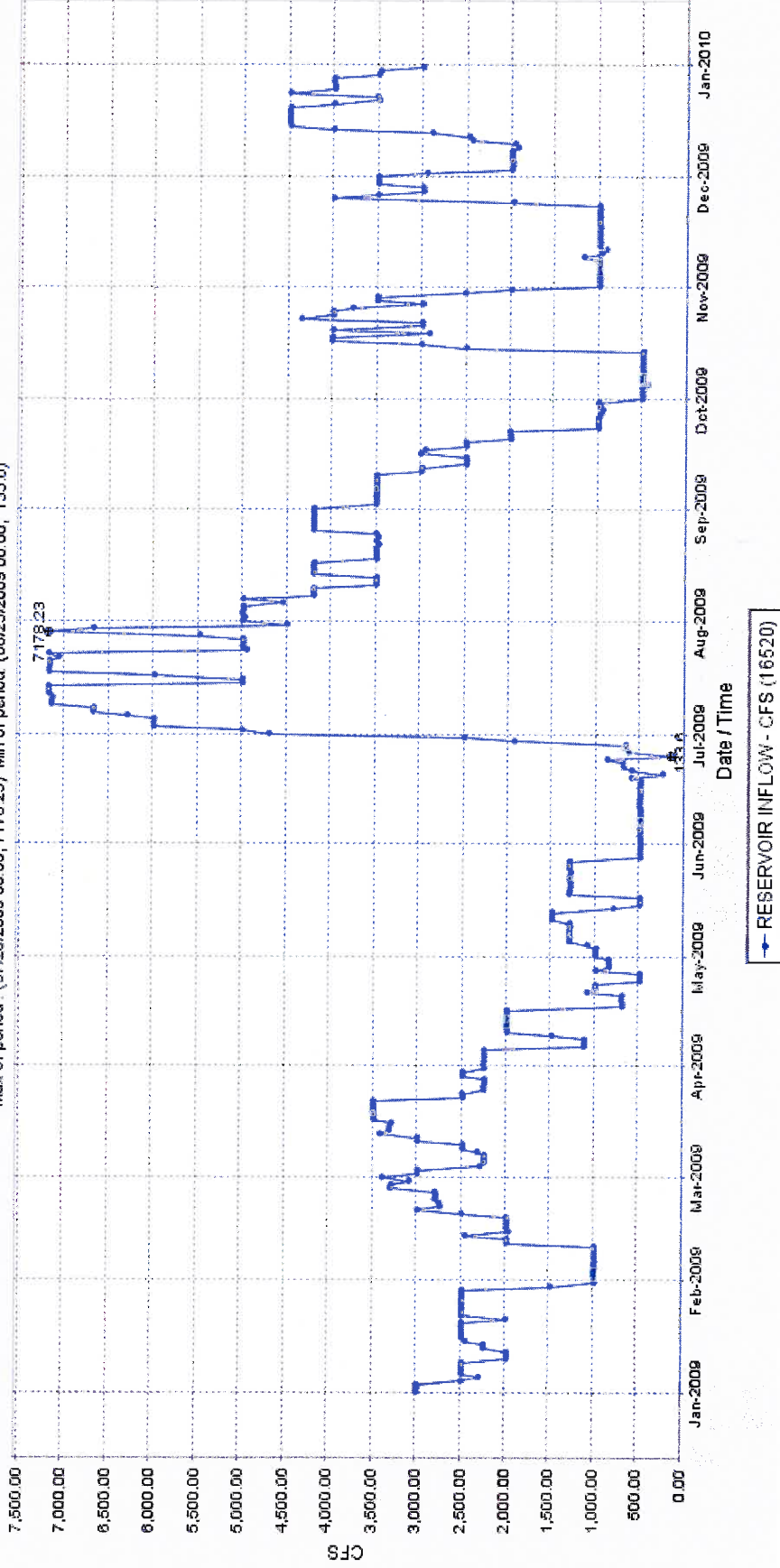


Generated on Tue Aug 30 13:46:20 PDT 2016

[Plot all TRP Sensors](#) | [Real-Time TRP Data](#) | [TRP Data](#) | [Daily TRP Data](#) | [Show TRP Map](#) | [TRP Info](#)

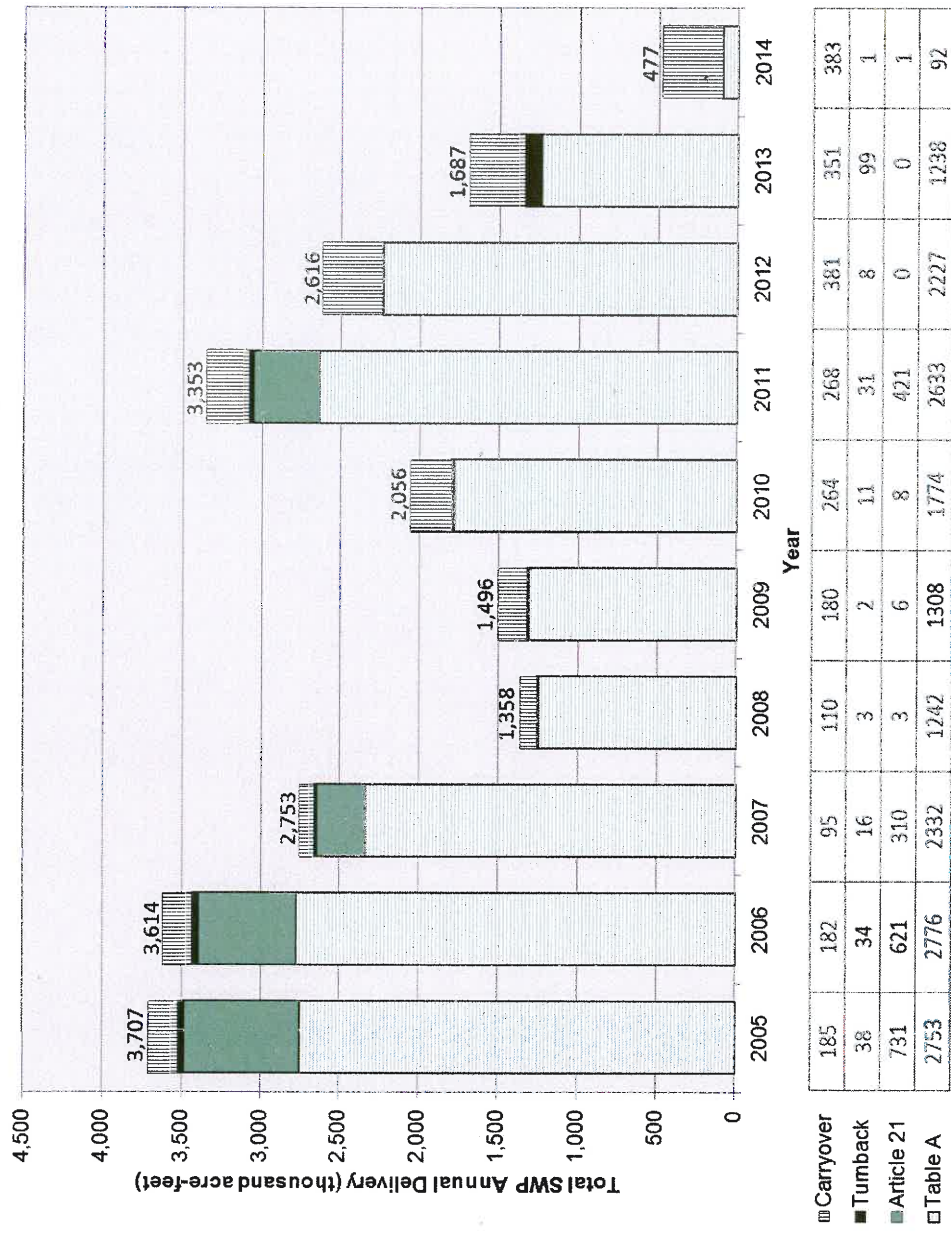
### CLIFTON COURT (CLC)

Date from 12/31/2008 13:42 through 12/31/2009 13:42 Duration : 365 days  
Max of period : (07/29/2009 00:00, 7178.23) Min of period : (06/25/2009 00:00, 133.6)



Generated on Tue Aug 30 13:44:51 PDT 2016

[Plot all CLC Sensors](#) | [Real-Time CLC Data](#) | [CLC Data](#) | [Daily CLC Data](#) | [Show CLC Map](#) | [CLC Info](#)



Note: The differences in historical deliveries from the State Water Project Delivery Reliability Report 2013 are due to reclassification of the various components of water delivered to SWP contractors

Figure 5-2. Total Historical SWP Deliveries, 2005–2014 (by Delivery Type)