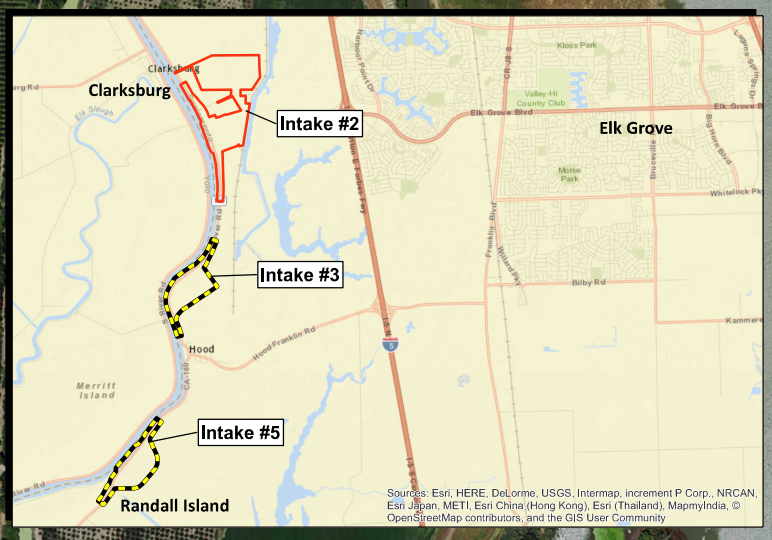


Legend

- Proposed Intake Facility Project Area
- Assessor Parcel Boundary

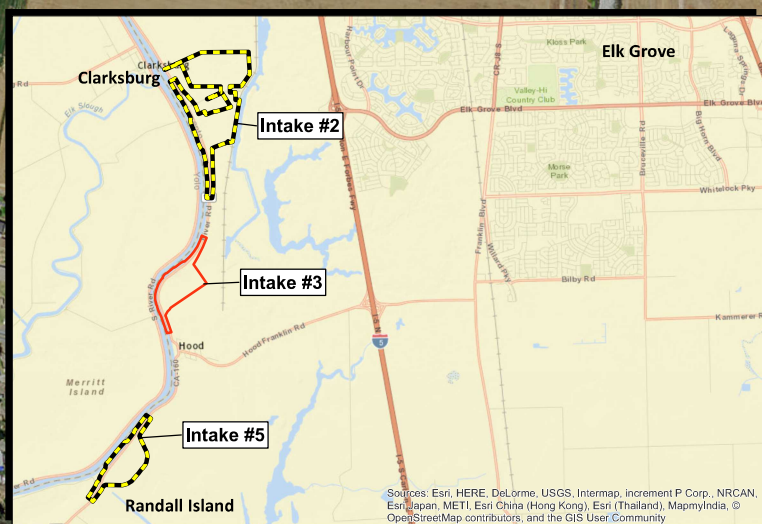
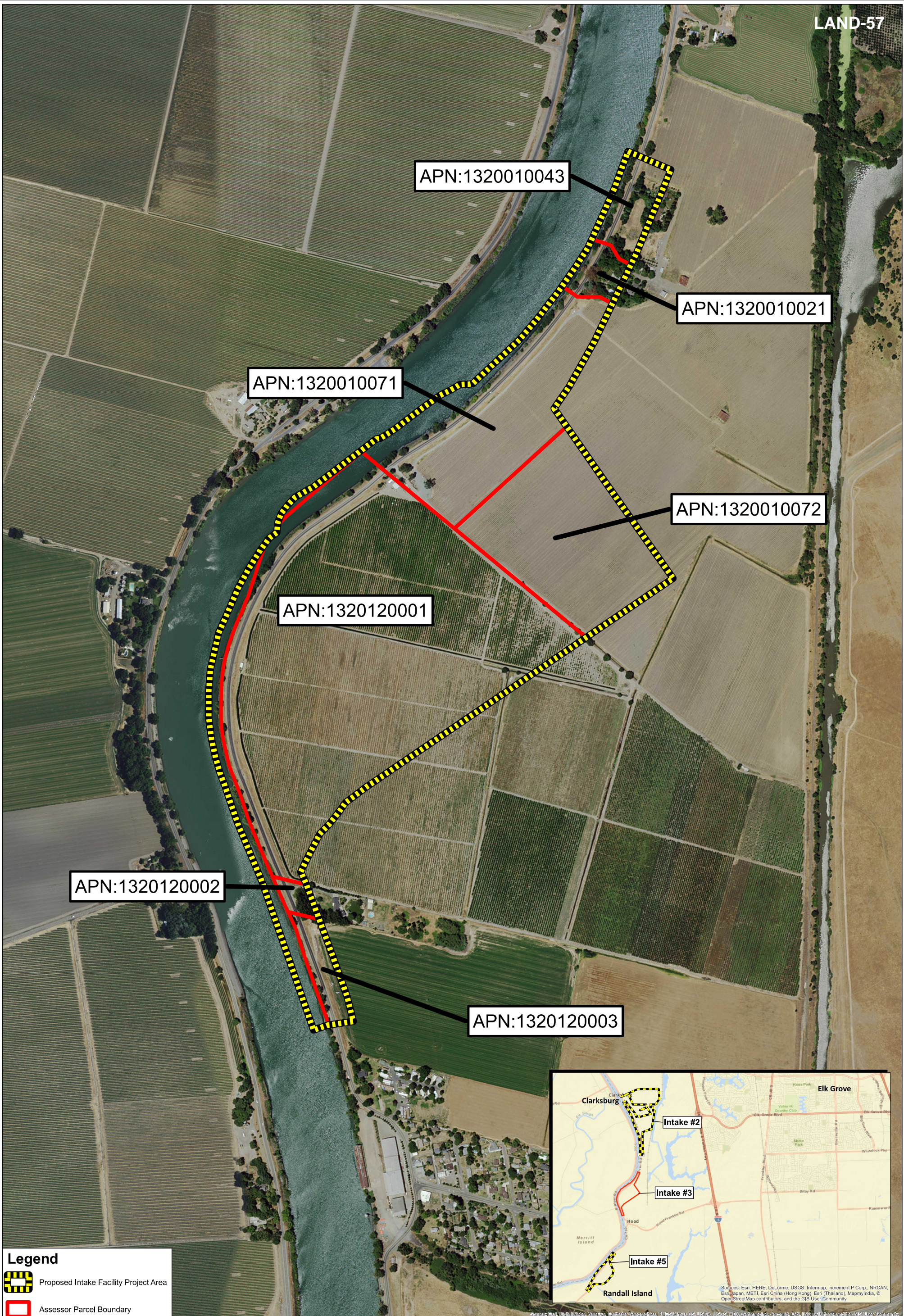


**Private Properties Needed for Water Tunnel
Intake #2 - Clarksburg, BDCP/Fix Alt. 4A
From DWR/BOR,
SWRCB Petition for Change, 8/25/2015**

0 175 350 700 Feet

Notes:
Locations identified are approximate and only represent proposed BDCP facilities, not final plans. Developed from Materials Provided by DWR, BDCP and DHCCP, reflecting the most recent proposal to date. Locations estimated from <http://bdcpweb.com/home.aspx>. Source: Plan Area, SAIC 2010; DWR DHCCP Engineering (rev 5a) [5/6/2015] & Plan Area, ICF 2012; DWR DCE MPTO Construction Footprint (rev 5a), Williamson Act 2009 [3/28/2015]. Projection: NAD 1983 UTM Zone 10N

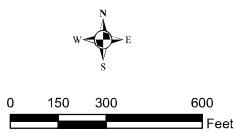
Prepared for Local Agencies of the North Delta
September 2015



**Private Properties Needed for Water Tunnel
Intake #3 - Hood, BDCP/Fix Alt. 4A
From DWR/BOR,
SWRCB Petition for Change, 8/25/2015**

Legend



- Proposed Intake Facility Project Area
- Assessor Parcel Boundary

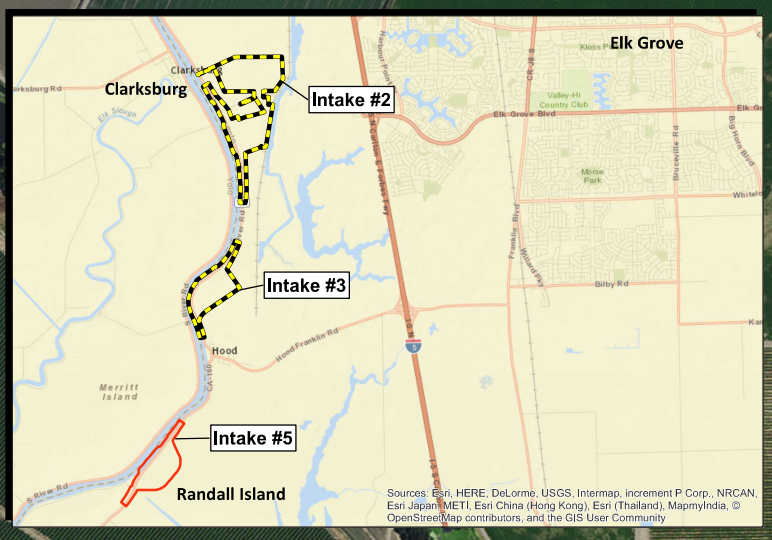


Document Path: \\GIS Data Files\Projects\10013015 - BDCP\September 2015\Proposed Intakes_9_4_15.mxd



Legend

-  Proposed Intake Facility Project Area
-  Assessor Parcel Boundary



Private Properties Needed for Water Tunnel Intake #5 - Randall Island, BDCP/Fix Alt. 4A From DWR/BOR, SWRCB Petition for Change, 8/25/2015