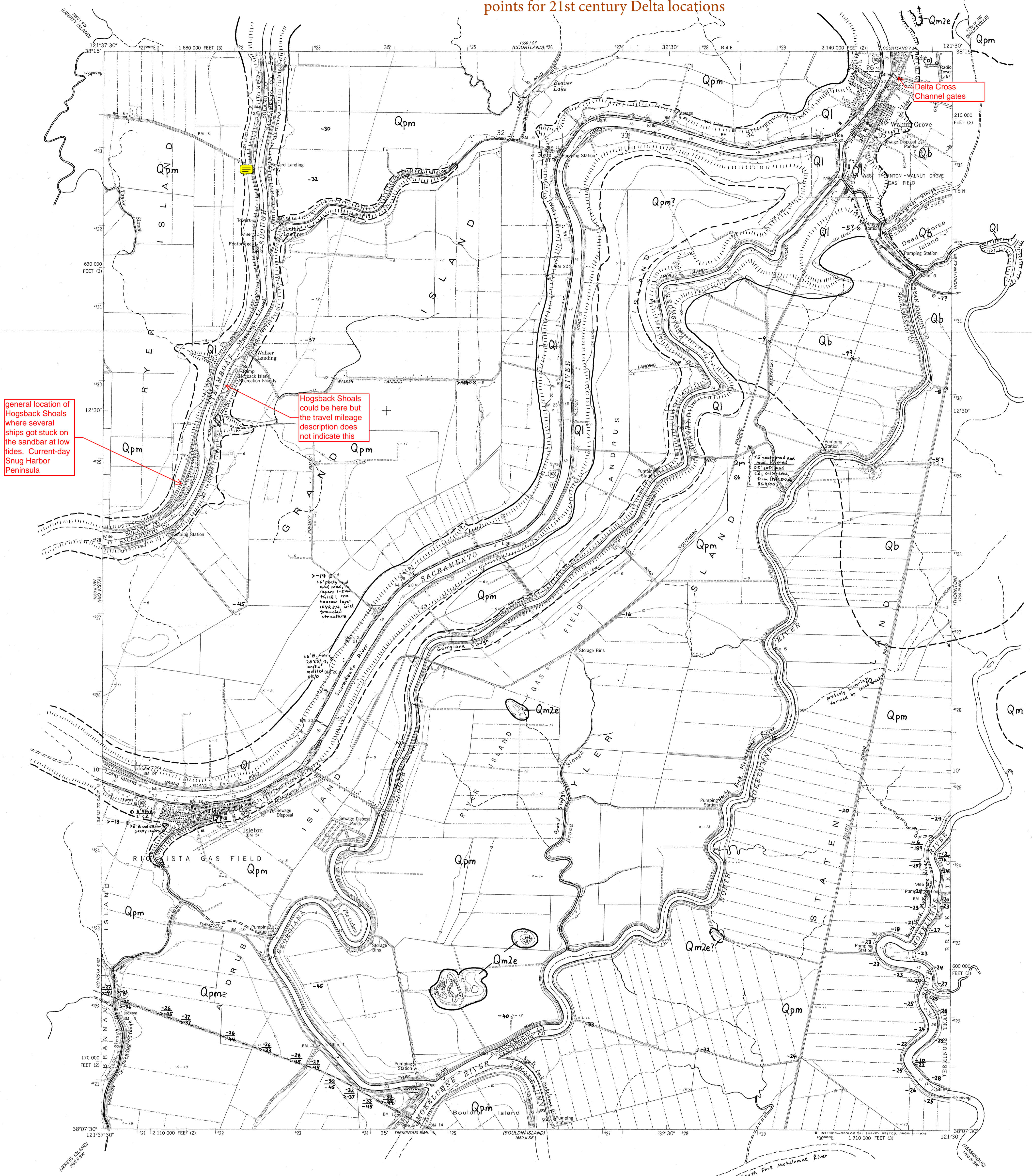
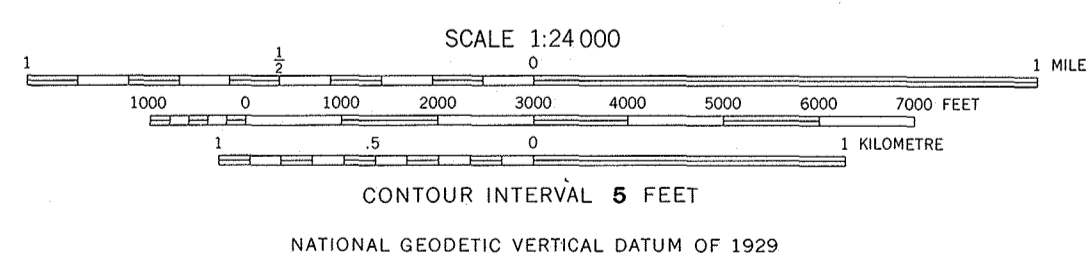
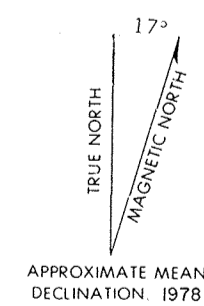


Red boxes added to help viewer locate known reference
points for 21st century Delta locations



Base from U.S. Geological Survey, 1978

Geology mapped 1978-1980



See sheet 21 and accompanying pamphlet for explanation and discussion.

ISLETON

GEOLOGIC MAPS OF THE SACRAMENTO-SAN JOAQUIN DELTA, CALIFORNIA

By
Brian F. Atwater

1982