



STATE OF CALIFORNIA

The Resources Agency

Department of Water Resources

BULLETIN No. 192

PLAN FOR IMPROVEMENT OF THE DELTA LEVEES



MAY 1975

CLAIRE T. DEDRICK
Secretary for Resources
The Resources Agency

EDMUND G. BROWN JR.
Governor
State of California

RONALD B. ROBIE
Director
Department of Water Resources

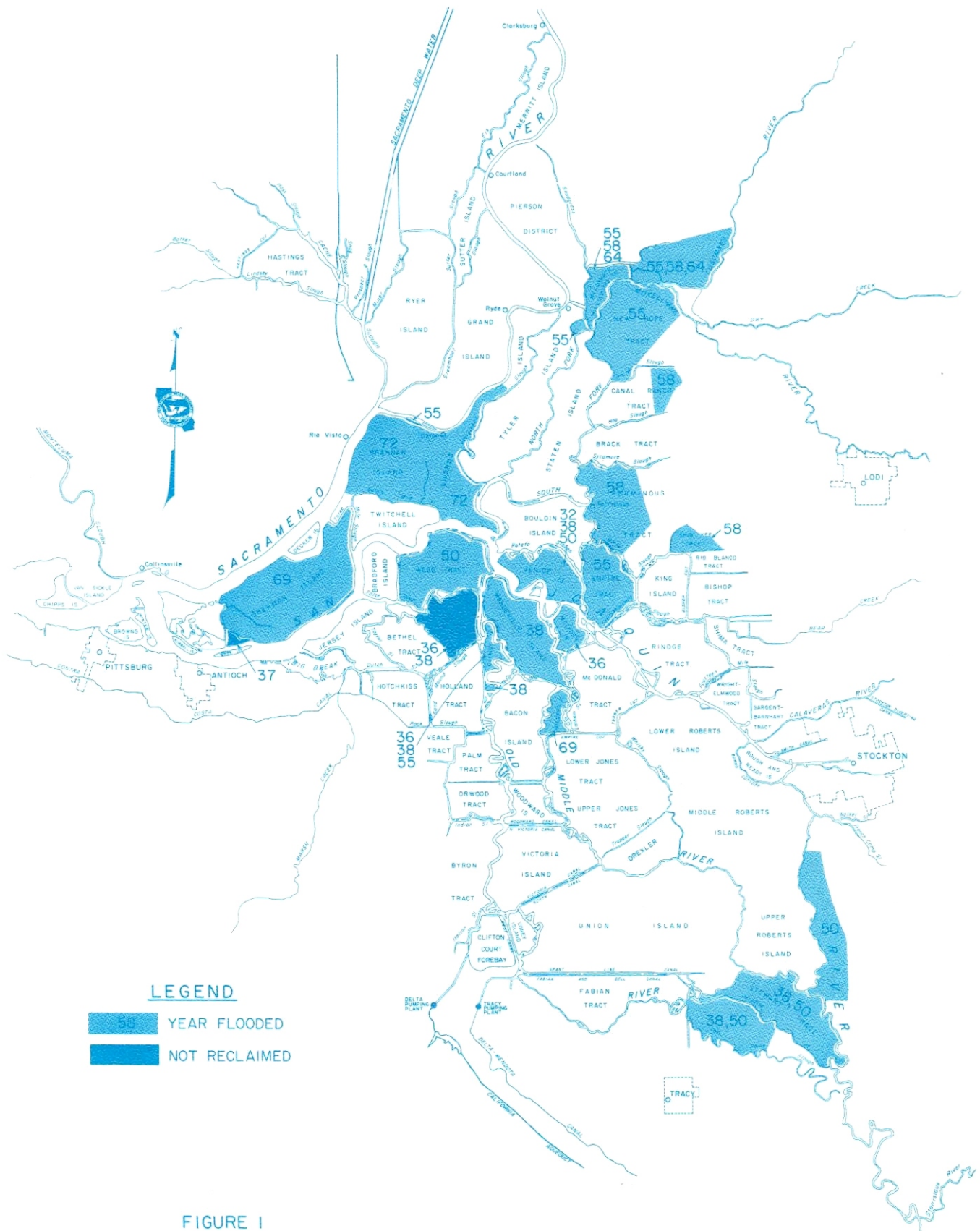


FIGURE I
 DELTA ISLANDS FLOODED
 SINCE 1930

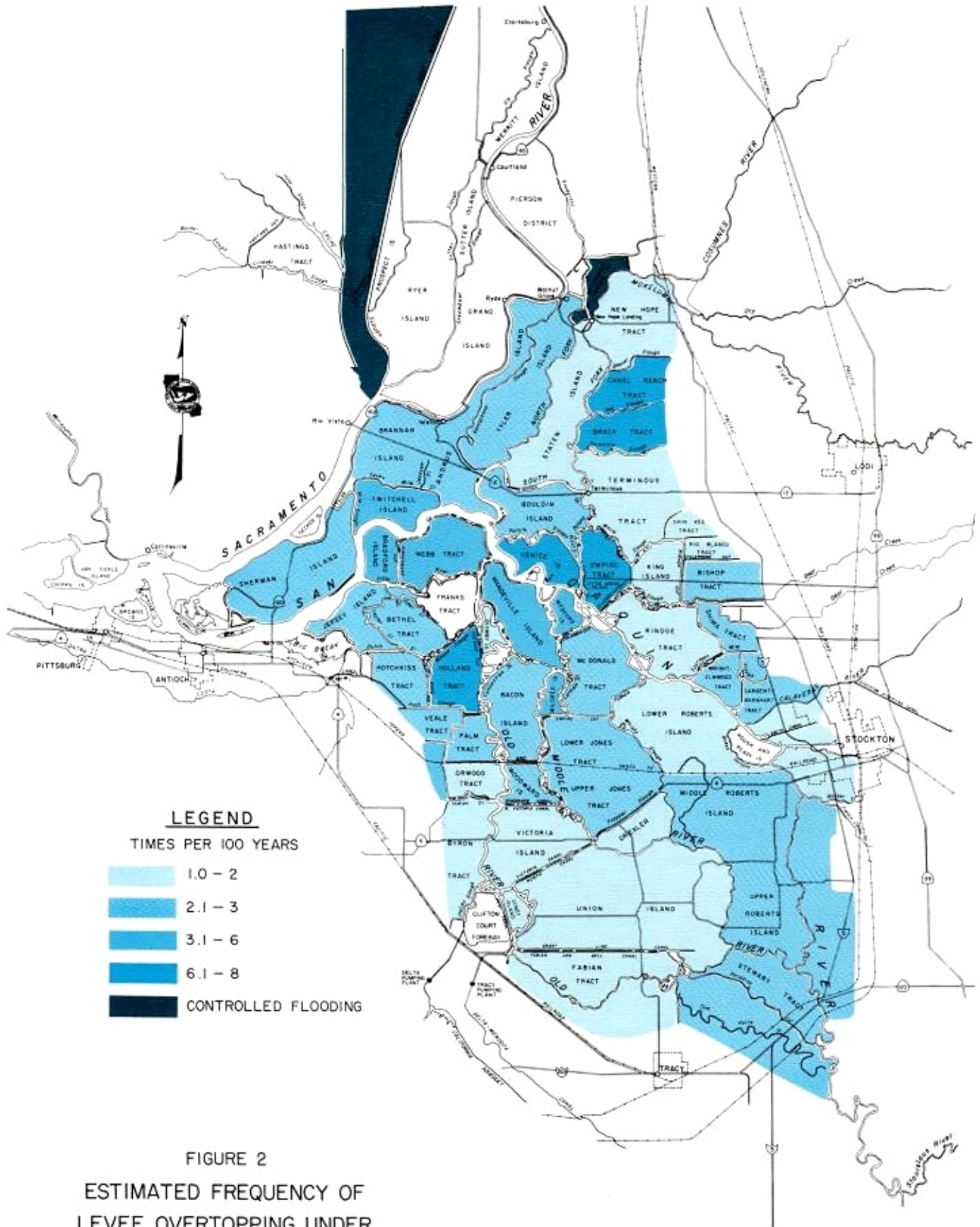


FIGURE 2
 ESTIMATED FREQUENCY OF
 LEVEE OVERTOPPING UNDER
 PRESENT CONDITIONS