

Attachment 4.A.1. Riparian Brush Rabbit Habitat Assessment Photo Log

4.A.1 Riparian Brush Rabbit Habitat Assessment Photo Log

4.A.1.1 Habitat Assessment

A habitat assessment for the riparian brush rabbit was completed on December 18, 2015 to inform a comprehensive biological assessment.

4.A.1.2 Photo Documentation

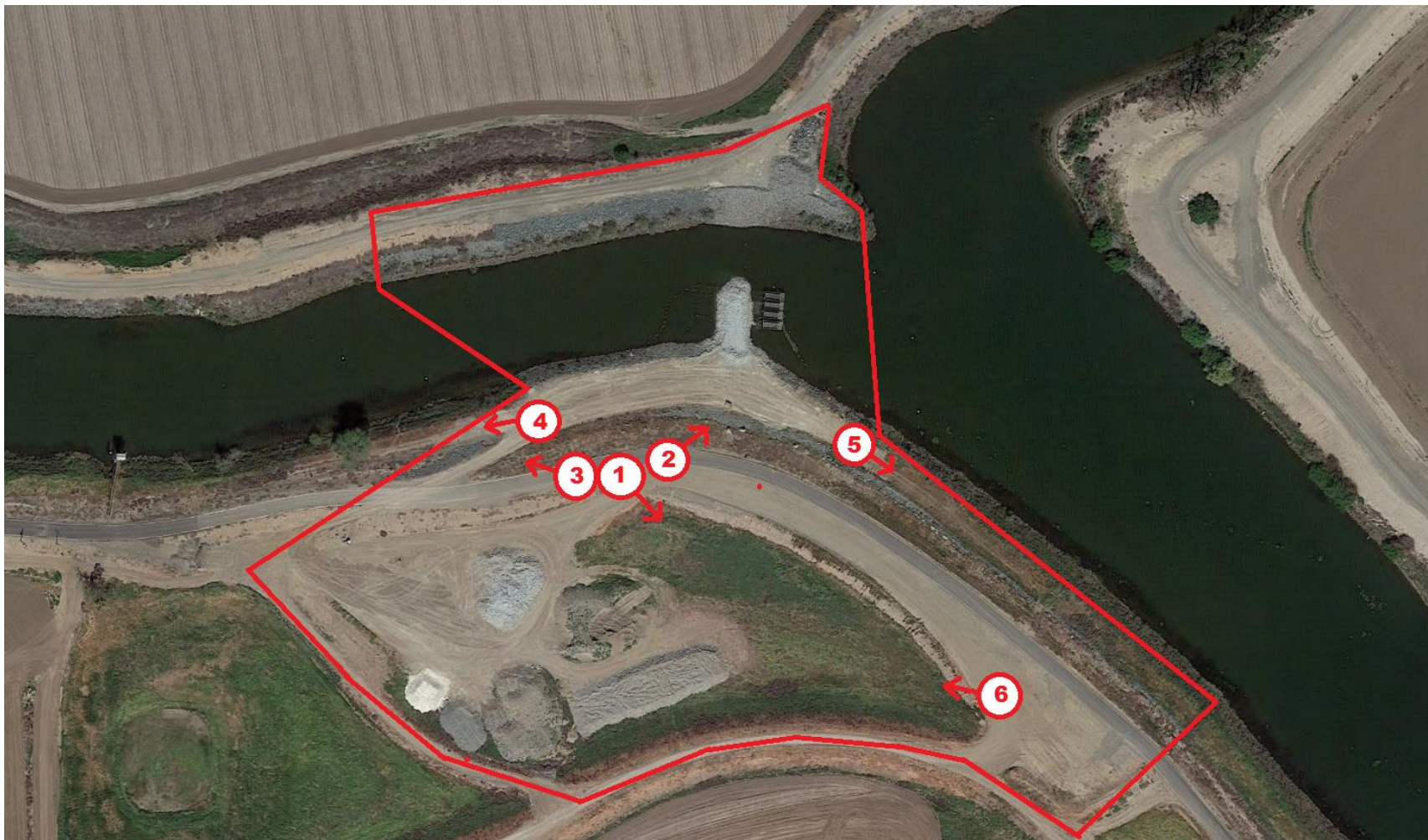


Figure 4.A.1-1. Project site with approximate construction and staging area footprint, and locations and direction of photos taken.



Photo 4.A.1-1. Looking SE across staging area. Dominant vegetation is non-native grassland and Russian thistle.



Photo 4.A.1-2. Looking NE across the barrier site, up Old River to the San Joaquin River. Dominant riparian habitat is non-native grassland.



Photo 4.A.1-3. Looking west down Old River from the levee crown road. Dominant riparian habitat is non-native grassland. The few small trees onsite are tobacco.



Photo 4.A.1-4. Looking west down Old River from the river bank. Dominant habitat is non-native grassland with small patches of Douglas sagewart. Trees onsite include small tobacco trees.



Photo 4.A.1-5. Looking SE down the lower bank shelf from the levee toe road (water-side). Dominant habitat is non-native grassland and Russian thistle with small, discontinuous patches of Douglas sagewart.



Photo 4.A.1-6. Looking west across the project staging area. Dominant habitat is non-native grassland and Russian thistle.