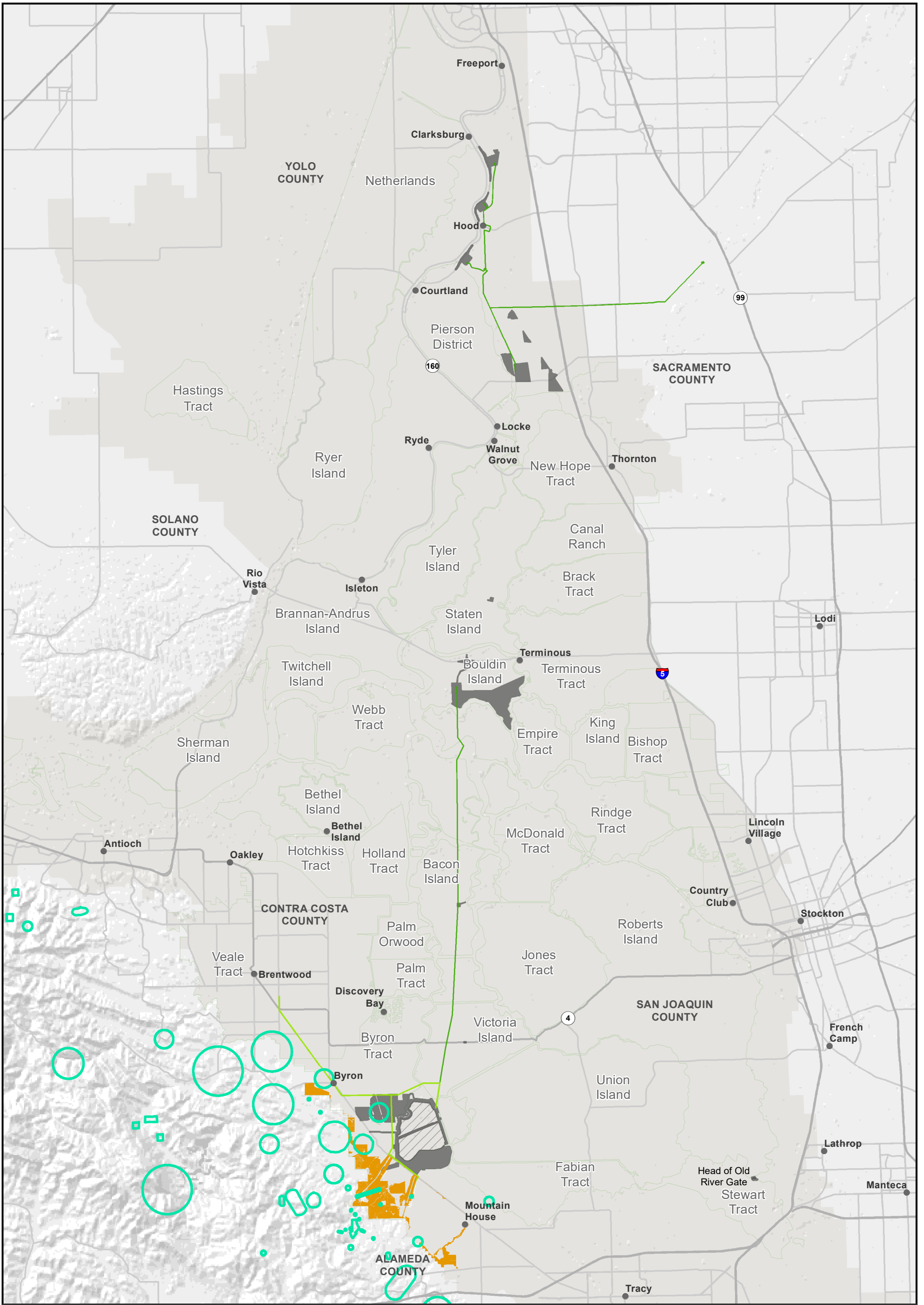
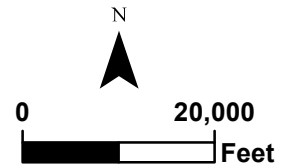


S:\Biological\Assess_ESA_Sect7_Permittin\ENV126_15_SpeciesDistribution_2016.mxd [Doc No: GIS-00204]



- City
- Legal Delta Boundary
- Species Occurrence
- San Joaquin kit fox habitat
- Project Area
- Permanent Transmission Lines
- Temporary Transmission Lines



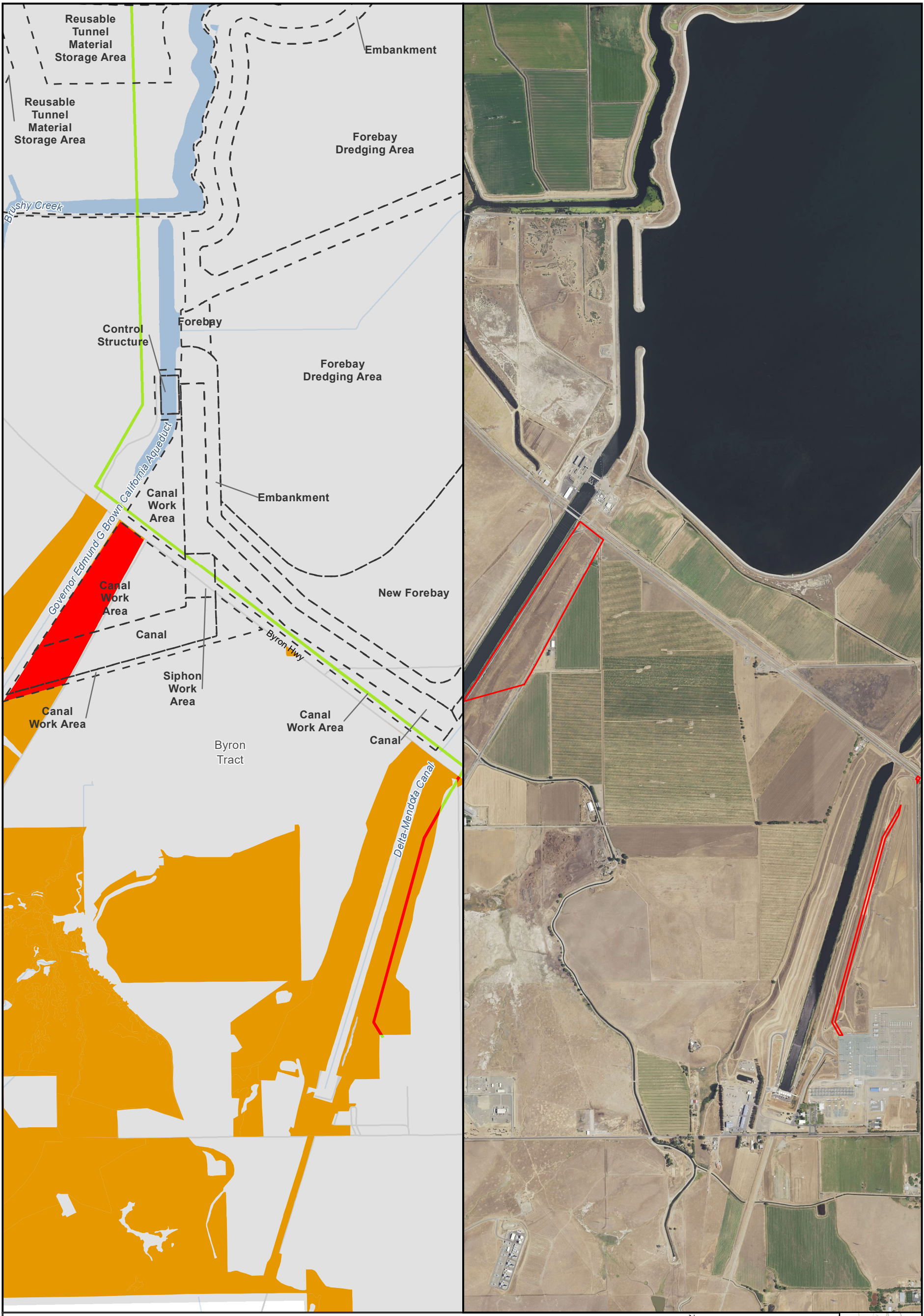
** Temporary work areas may be restored after construction is complete, however, for the purposes of impact analysis, the effect is considered permanent

Sources: CCO Conveyance, CA WaterFix 2015; Species Occurrences, ICF 2013; Modeled Habitat, ICF 2013, ICF 2015; Critical Habitat, USFWS 2012



**Impacts to San Joaquin Kit Fox Modeled Habitat from Water Conveyance Facility Construction
Modified Pipeline Tunnel/Clifton Court Forebay Option
Overview**

S:\Biological\Assess_ESA_Sect7_Permittin\ENV126_15_SpeciesDistribution_2pane_201601.mxd 2016706 [clsb] [Doc No: GIS-00204]



- City
- Major roads
- State and Interstate Highways
- Delta Island
- Modeled San Joaquin kit fox habitat
- Impacted Modeled San Joaquin kit fox habitat
- Project Area
- Permanent Transmission Lines
- Temporary Transmission Lines



** The location of the transmission lines have not been finalized. Transmission structures will be constructed to have the least impact to the surrounding habitats.

Sources: CCO Conveyance, CA WaterFix 2015; Species Occurrences, ICF 2013; Modeled Habitat, ICF 2013, ICF 2015; NAIP 2014



**Impacts to San Joaquin Kit Fox Modeled Habitat from Water Conveyance Facility Construction
Modified Pipeline Tunnel/Clifton Court Forebay Option
Clifton Court Forebay
Figure 6.3-2 of 6.3-2**