

DESIGN REFINEMENTS & PROPOSED MODIFICATIONS

WaterFix will reduce permanent impacts to Delta wetlands by

MORE THAN
500
ACRES

And reduce temporary impacts to wetlands by

2,000
ACRES

Eliminate barge landing at Snodgrass Slough

BENEFITS: Reduces barge traffic in the northern portion of the Delta; reduces impacts to wetlands

Move a shaft site on Mandeville Island

BENEFITS: Avoids wetlands

Eliminate the Clifton Court Forebay modifications by moving the terminus of the main tunnels and forebay to a new location

BENEFITS: Reduces impacts to wetlands, salmon, and smelt; improves construction access; reduces permanent impacts to wetlands by 270 acres and temporary impacts to wetlands by over 1,900 acres

Eliminate the need to relocate a 500 kV and 230 kV transmission line from the Tracy substation

BENEFITS: Reduces wetland impacts and eliminates unnecessary costs

Move the north tunnel alignment to the east, just outside the town of Hood instead of directly below it

BENEFITS: Reduces potential impacts to the town of Hood

Move power line alignment to use SMUD's existing transmission corridor*

BENEFITS: Fewer powerlines required, improves aesthetics, reduces impact to birds, reduces need for large substation near the town of Courtland

Consolidate the Reusable Tunnel Material (RTM) footprint near the Intermediate Forebay into a single site

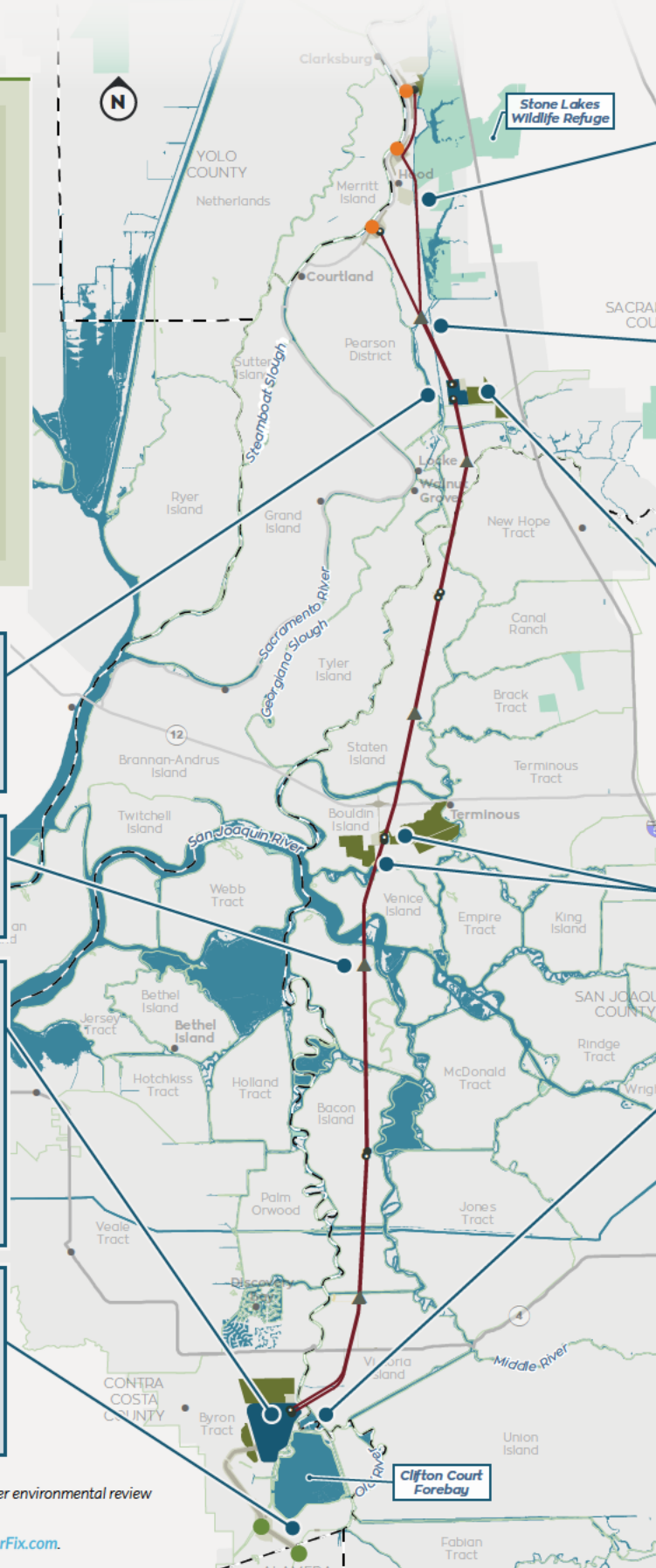
BENEFITS: Reduces impacts to Stone Lakes Wildlife Refuge, wetlands, and nearby agricultural activities; reduces construction impacts caused by truck traffic and improves operational efficiency; wetland impacts reduced by more than 50 acres

Optimize Bouldin Island activities by relocating shaft site, RTM, and barge landing

BENEFITS: Reduces wetlands impacts by over 100 acres on Bouldin Island; reduces potential impacts to Delta navigation and recreation opportunities

Move a pumping plant away from Kings Island

BENEFITS: Reduces impacts to a residential neighborhood on Kings Island; reduces impacts to wetlands



MAP LEGEND

- Forebay
- Reusable Tunnel Material Area
- Main Tunnels
- Main Construction Shaft
- Ventilation/Access Shaft
- Intake
- Existing CVP and SWP pumps
- County Lines

* Previously implemented, not subject to further environmental review
An updated Conceptual Engineering Report will soon be available at www.CaliforniaWaterFix.com.