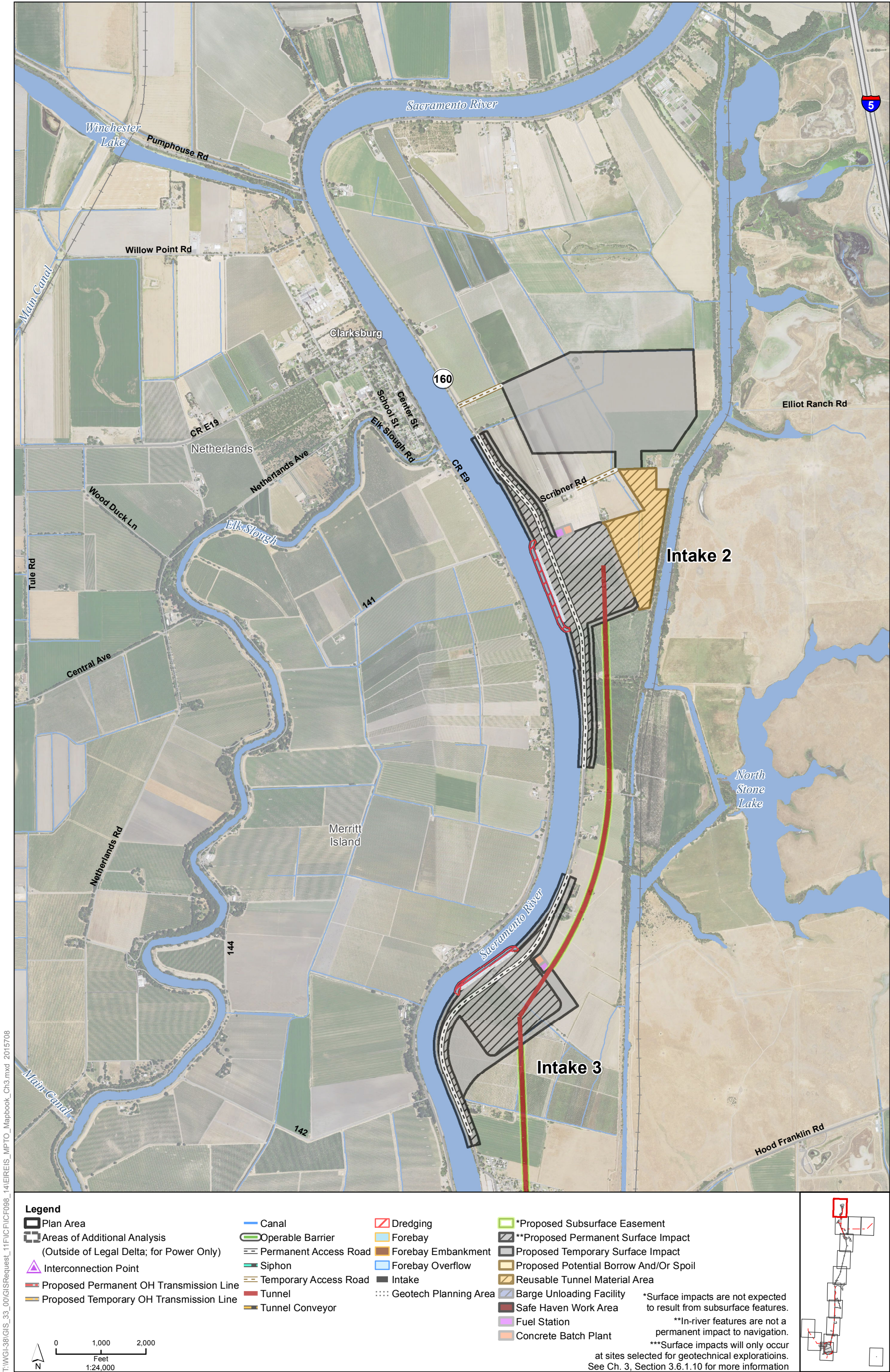


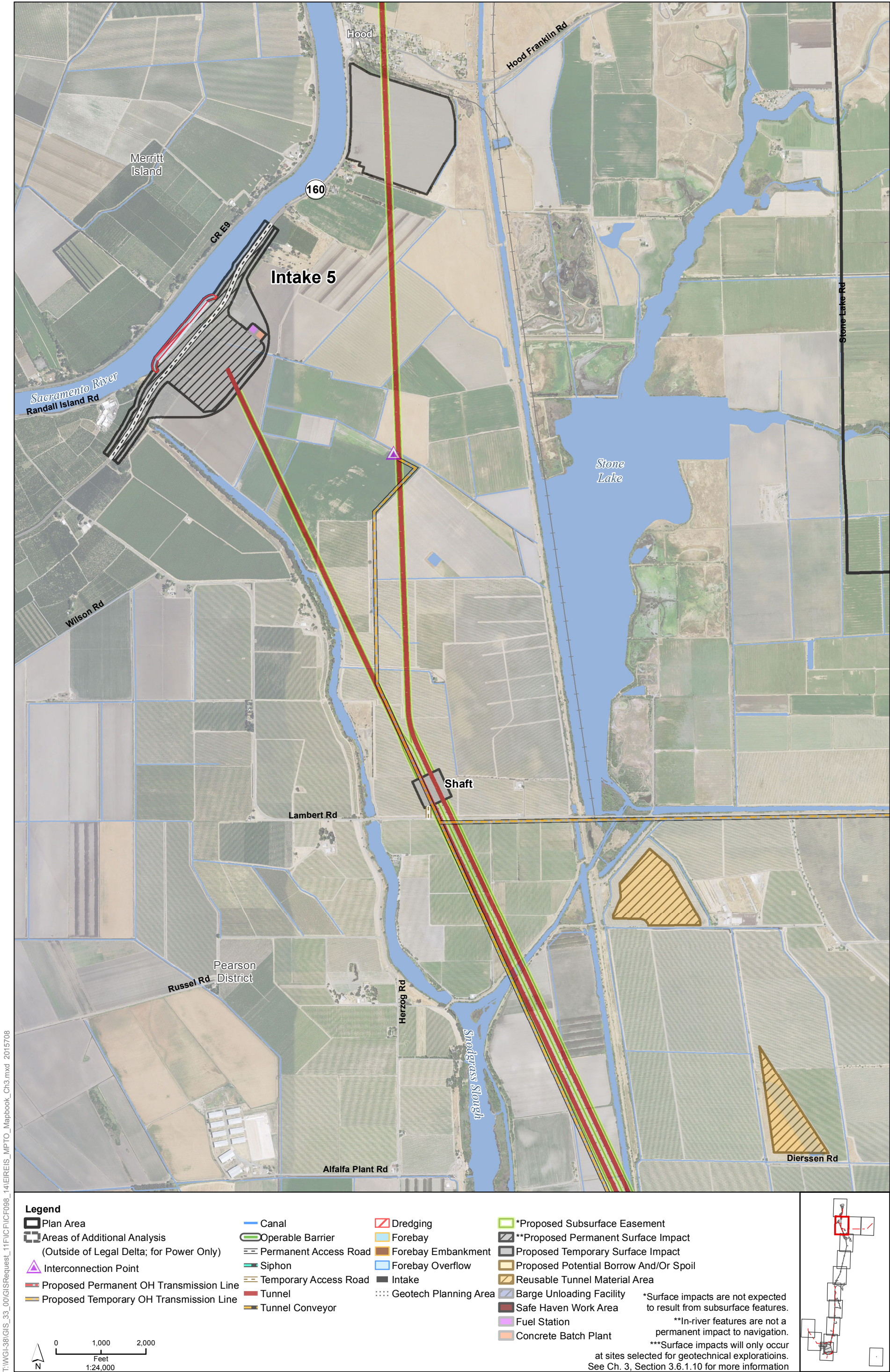
Figure M3-4: Index
Modified Pipeline/Tunnel Alignment (Alternatives 4)



T:\WG\38\GIS_33_00\GISRequest_11\FIC\FICF098_14\IREIS_MPTO_Mapbook_Ch3.mxd 2015708

Sources: Plan Area, SAIC 2010; DWR DHCCP Engineering (rev 5a); NAIP 2014

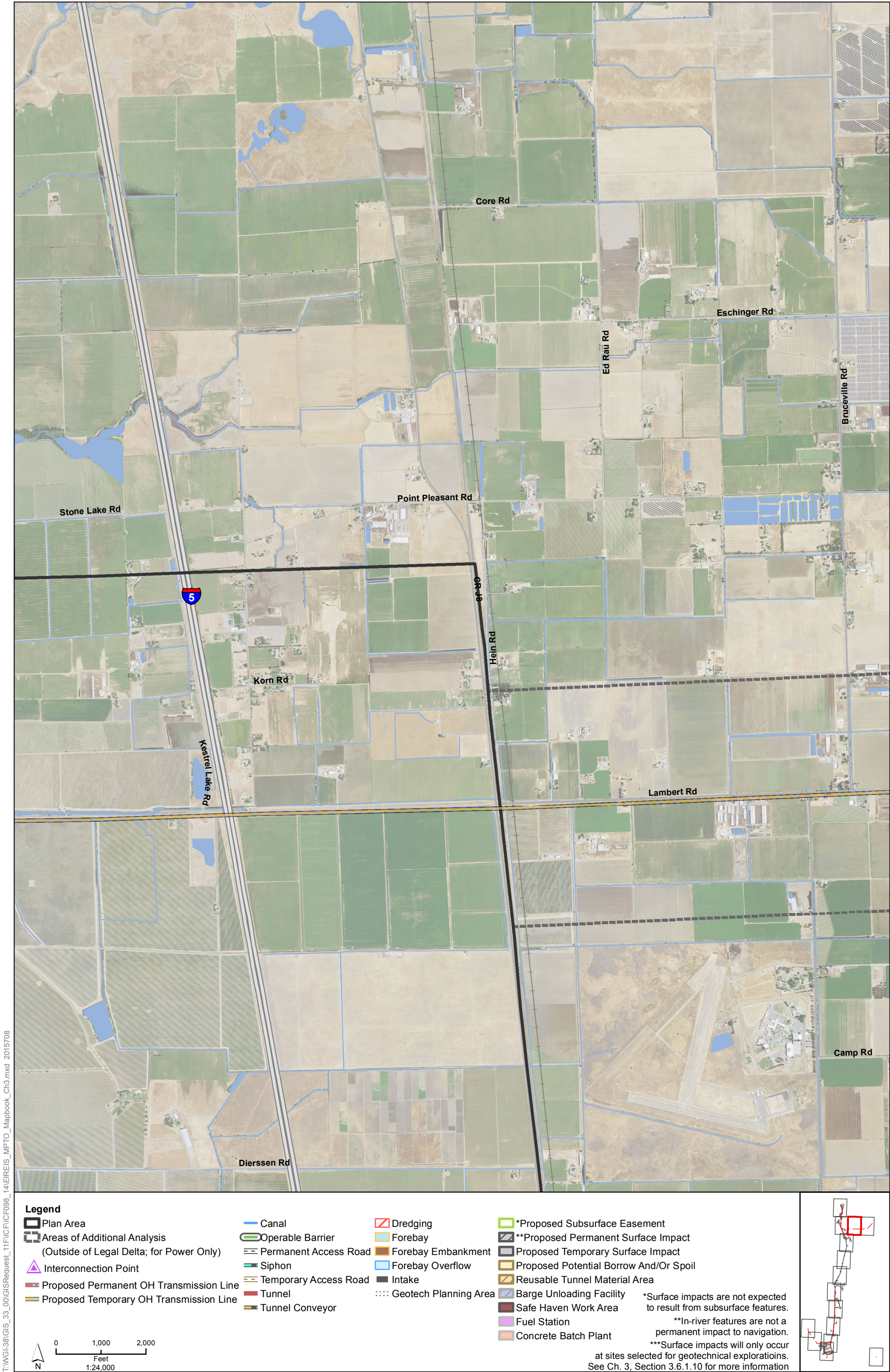
Figure M3-4: Sheet 1 of 15
Modified Pipeline/Tunnel Alignment (Alternative 4)



T:\WG\38\GIS_33_00\GISRequest_11\FIC\FICF098_14\IREIS_MPTO_Mapbook_Ch3.mxd 2015708

Sources: Plan Area, SAIC 2010; DWR DHCCP Engineering (rev 5a); NAIP 2014

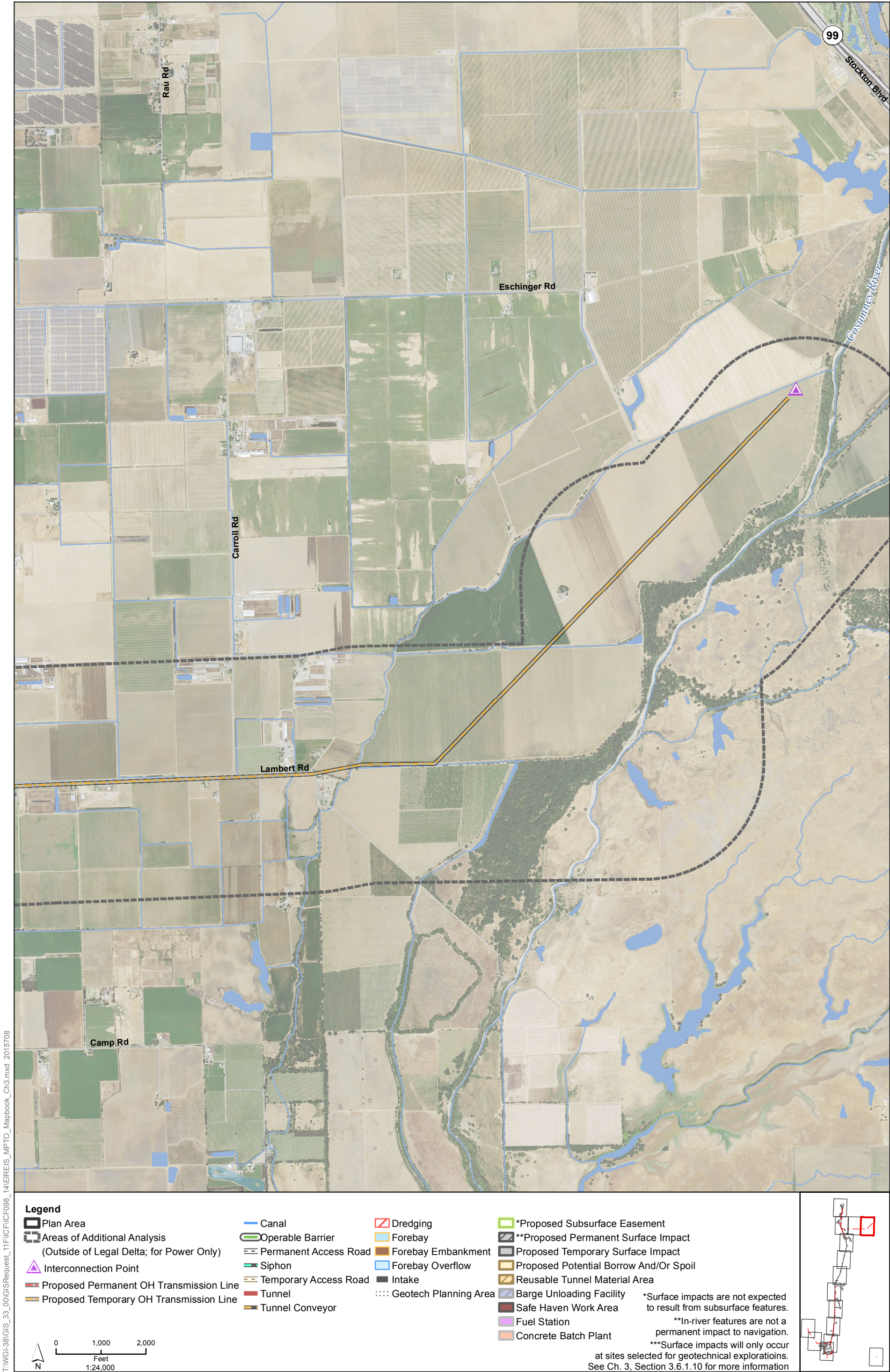
Figure M3-4: Sheet 2 of 15
Modified Pipeline/Tunnel Alignment (Alternative 4)



T:\WGL\38\GIS_33_00\GISRequest_11\FIC\FICF098_14\IREIS_MPTO_Mapbook_Ch3.mxd 2015708

Sources: Plan Area, SAIC 2010; DWR DHCCP Engineering (rev 5a); NAIP 2014

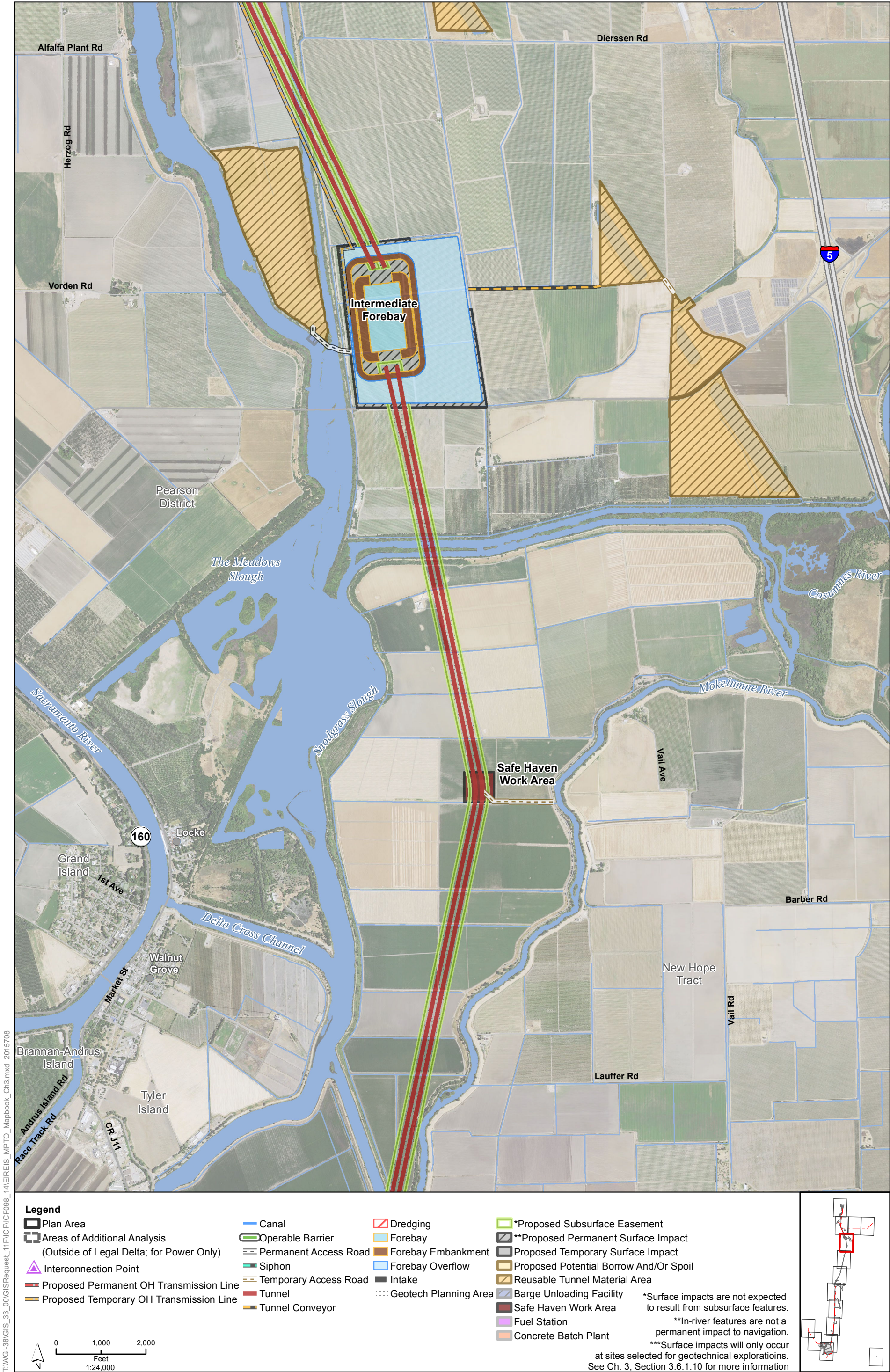
Figure M3-4: Sheet 3 of 15
Modified Pipeline/Tunnel Alignment (Alternative 4)



T:\WGL\38\GIS_33_00\GISRequest_11\FIC\FICF098_14\IREIS_MPTO_Mapbook_Ch3.mxd 2015708

Sources: Plan Area, SAIC 2010; DWR DHCCP Engineering (rev 5a); NAIP 2014

Figure M3-4: Sheet 4 of 15
Modified Pipeline/Tunnel Alignment (Alternative 4)



T:\WGL\GIS\33_00\GISRequest_11\FIC\FIC098_14\IERSIS_MPTO_Mapbook_Ch3.mxd 2015708

Sources: Plan Area, SAIC 2010; DWR DHCCP Engineering (rev 5a); NAIP 2014

Figure M3-4: Sheet 5 of 15
Modified Pipeline/Tunnel Alignment (Alternative 4)

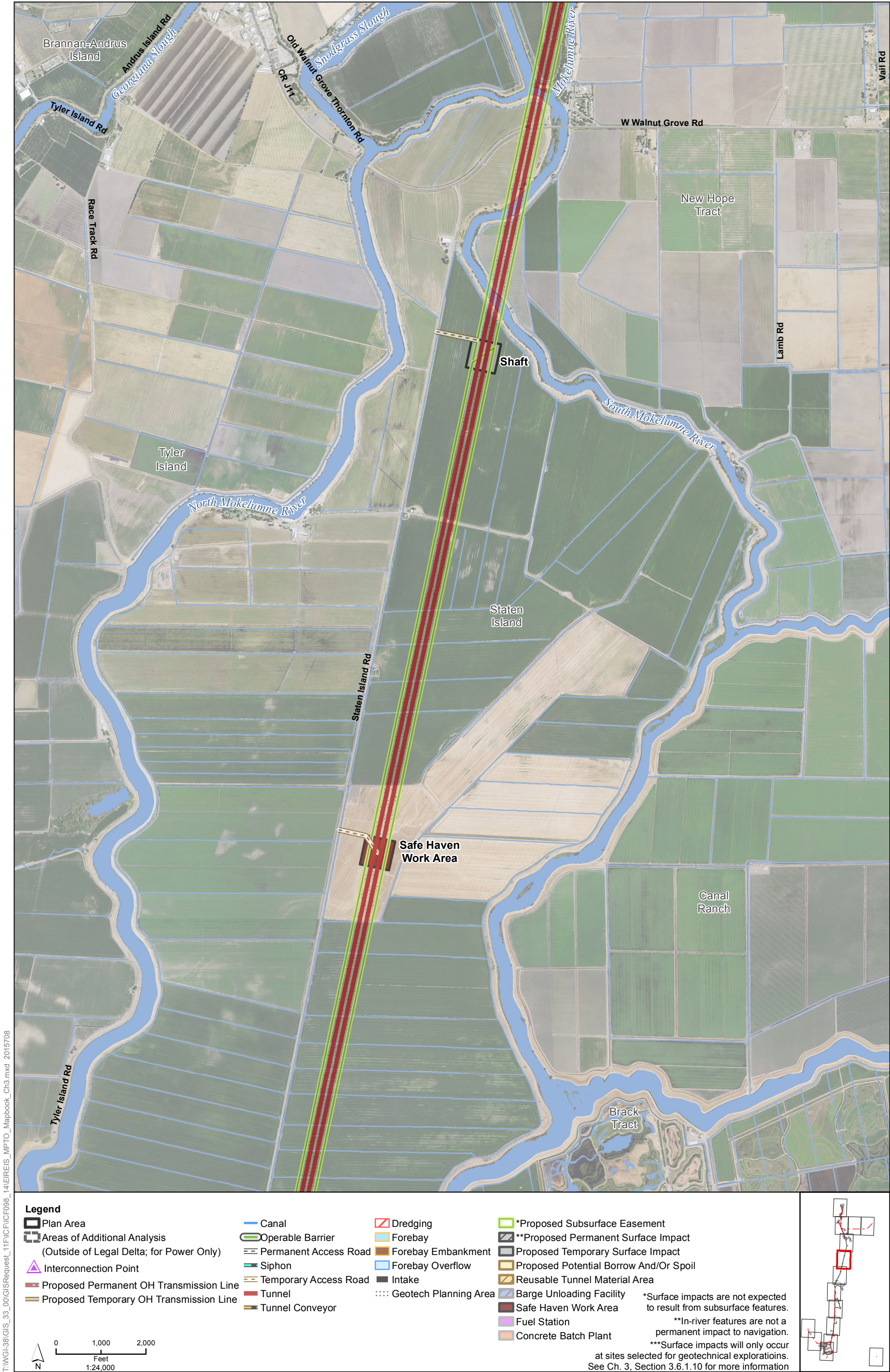
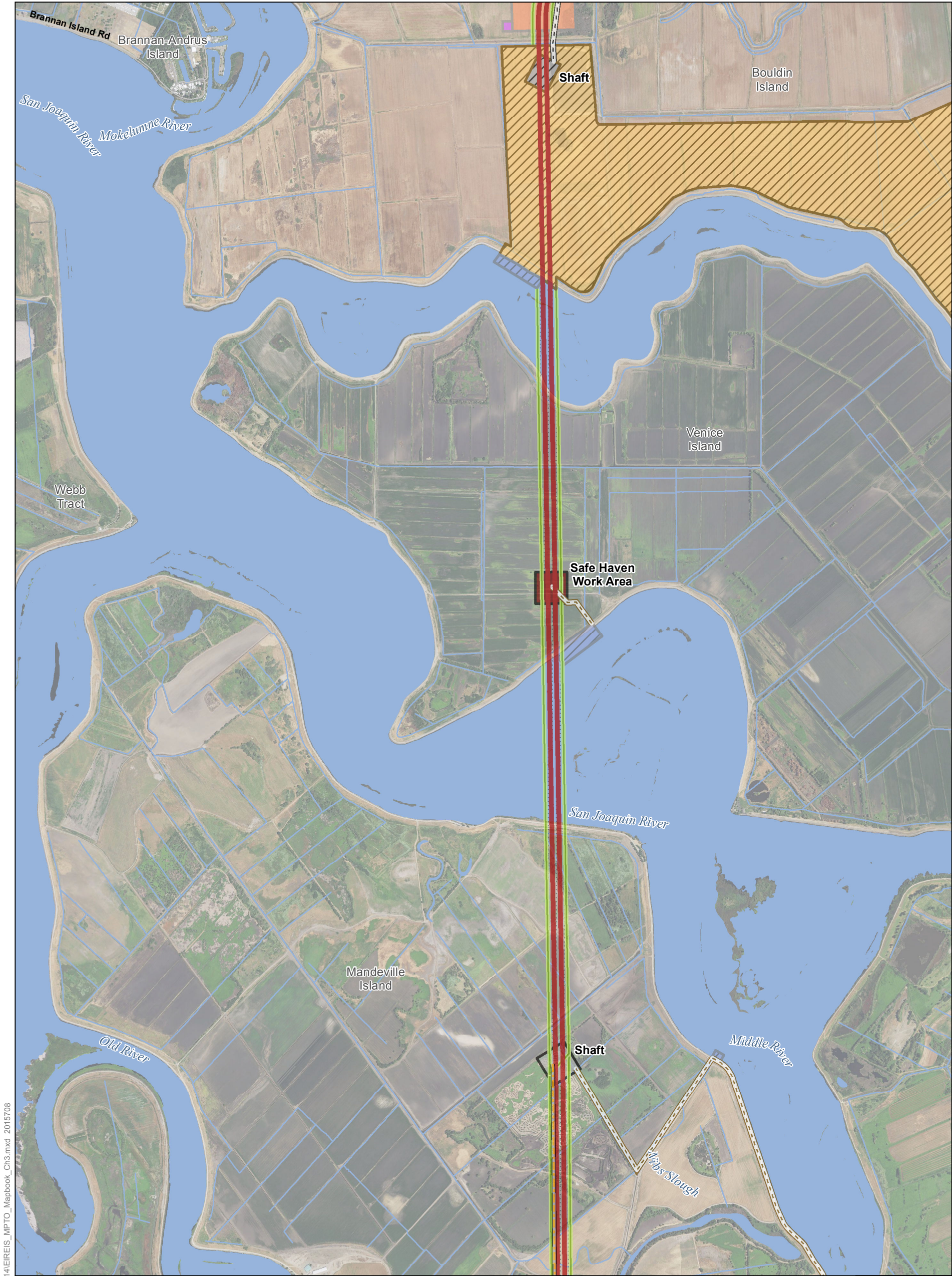


Figure M3-4: Sheet 6 of 15
Modified Pipeline/Tunnel Alignment (Alternative 4)



Figure M3-4: Sheet 7 of 15
Modified Pipeline/Tunnel Alignment (Alternative 4)

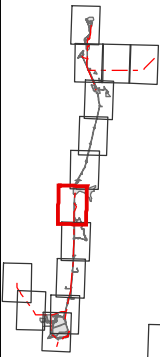


T:\WGL\38\GIS_33_00\GISRequest_11\FIC\FICF098_14\IREIS_MPTO_Mapbook_Ch3.mxd 2015708

Legend

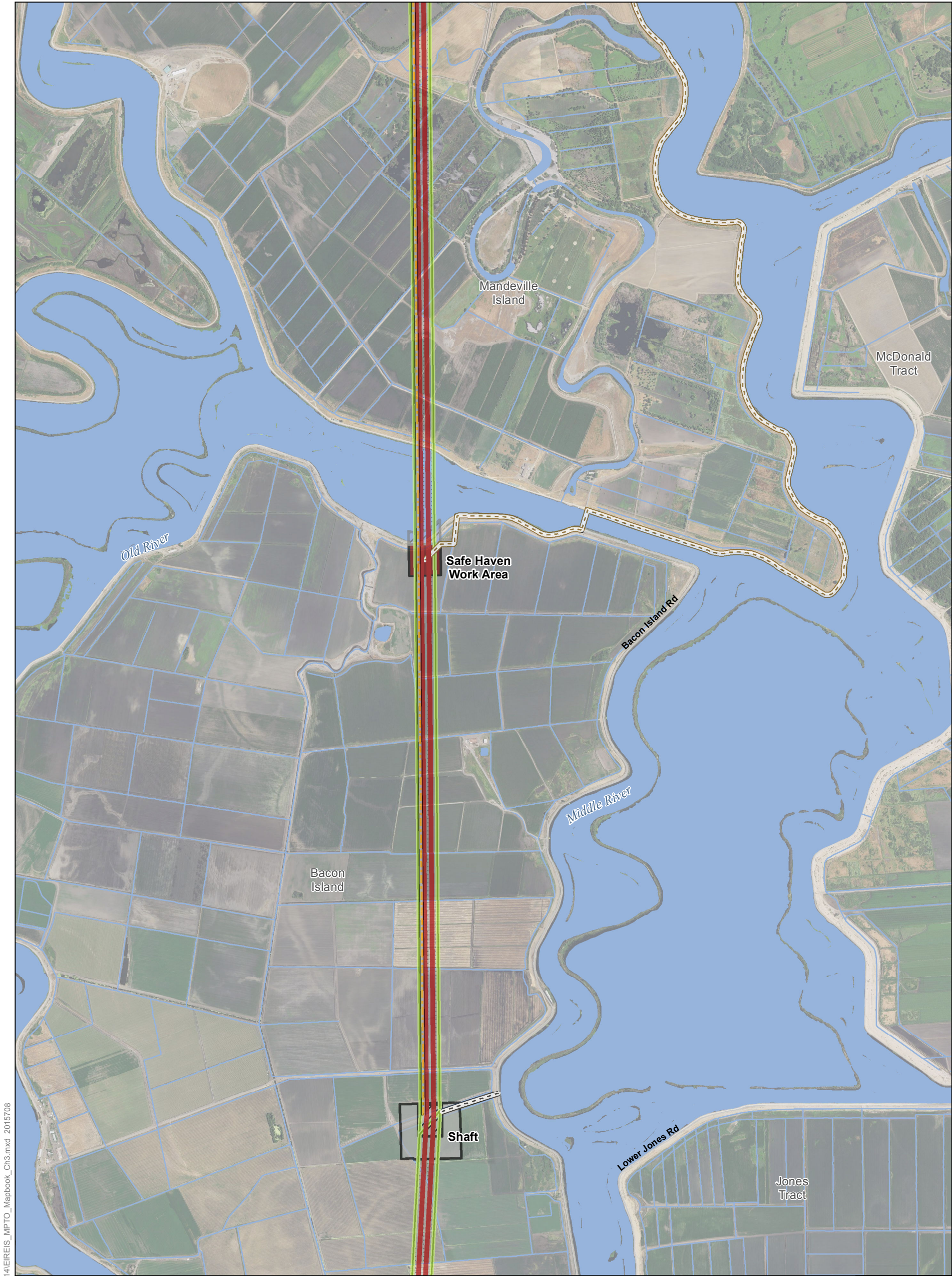
- | | | | |
|--|-----------------------|--------------------|--|
| Plan Area | Canal | Dredging | *Proposed Subsurface Easement |
| Areas of Additional Analysis
(Outside of Legal Delta; for Power Only) | Operable Barrier | Forebay | **Proposed Permanent Surface Impact |
| Interconnection Point | Permanent Access Road | Forebay Embankment | Proposed Temporary Surface Impact |
| Proposed Permanent OH Transmission Line | Siphon | Forebay Overflow | Proposed Potential Borrow And/Or Spoil |
| Proposed Temporary OH Transmission Line | Temporary Access Road | Intake | Reusable Tunnel Material Area |
| | Geotech Planning Area | Tunnel | Barge Unloading Facility |
| | Tunnel Conveyor | | Safe Haven Work Area |
| | | | Fuel Station |
| | | | Concrete Batch Plant |

*Surface impacts are not expected to result from subsurface features.
**In-river features are not a permanent impact to navigation.
***Surface impacts will only occur at sites selected for geotechnical explorations.
See Ch. 3, Section 3.6.1.10 for more information



Sources: Plan Area, SAIC 2010; DWR DHCCP Engineering (rev 5a); NAIP 2014

Figure M3-4: Sheet 8 of 15
Modified Pipeline/Tunnel Alignment (Alternative 4)

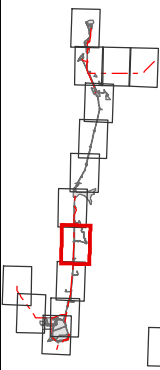
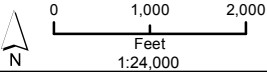


T:\WGL\38\GIS_33_00\GISRequest_11\FIC\FICF098_14\IREIS_MPTO_Mapbook_Ch3.mxd 2015708

Legend

- | | | | |
|--|-----------------------|-----------------------|--|
| Plan Area | Canal | Dredging | *Proposed Subsurface Easement |
| Areas of Additional Analysis
(Outside of Legal Delta; for Power Only) | Operable Barrier | Forebay | **Proposed Permanent Surface Impact |
| Interconnection Point | Permanent Access Road | Forebay Embankment | Proposed Temporary Surface Impact |
| Proposed Permanent OH Transmission Line | Siphon | Forebay Overflow | Proposed Potential Borrow And/Or Spoil |
| Proposed Temporary OH Transmission Line | Temporary Access Road | Intake | Reusable Tunnel Material Area |
| | Tunnel | Geotech Planning Area | Barge Unloading Facility |
| | Tunnel Conveyor | | Safe Haven Work Area |
| | | | Fuel Station |
| | | | Concrete Batch Plant |

*Surface impacts are not expected to result from subsurface features.
**In-river features are not a permanent impact to navigation.
***Surface impacts will only occur at sites selected for geotechnical explorations.
See Ch. 3, Section 3.6.1.10 for more information



Sources: Plan Area, SAIC 2010; DWR DHCCP Engineering (rev 5a); NAIP 2014

Figure M3-4: Sheet 9 of 15
Modified Pipeline/Tunnel Alignment (Alternative 4)

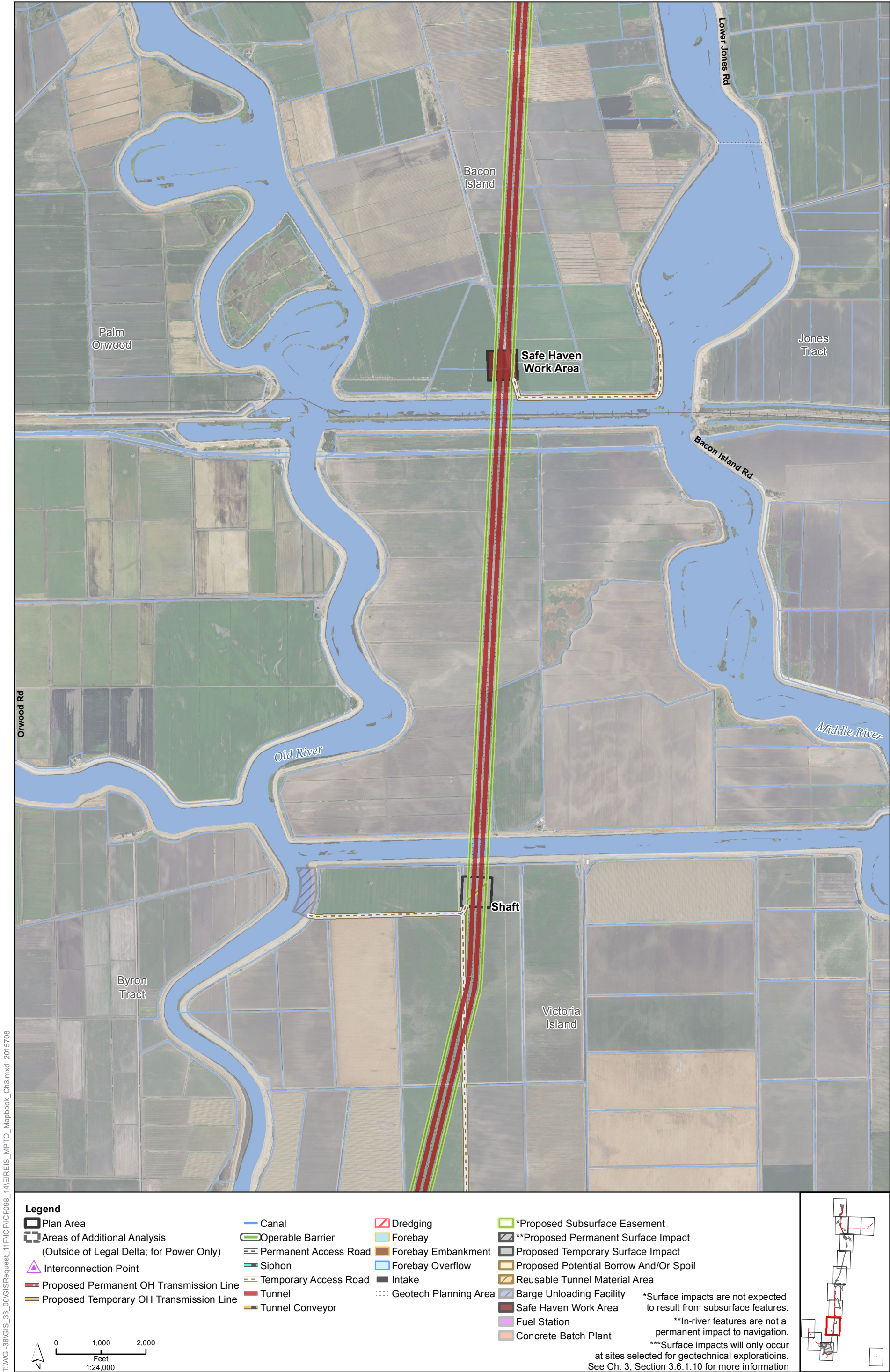
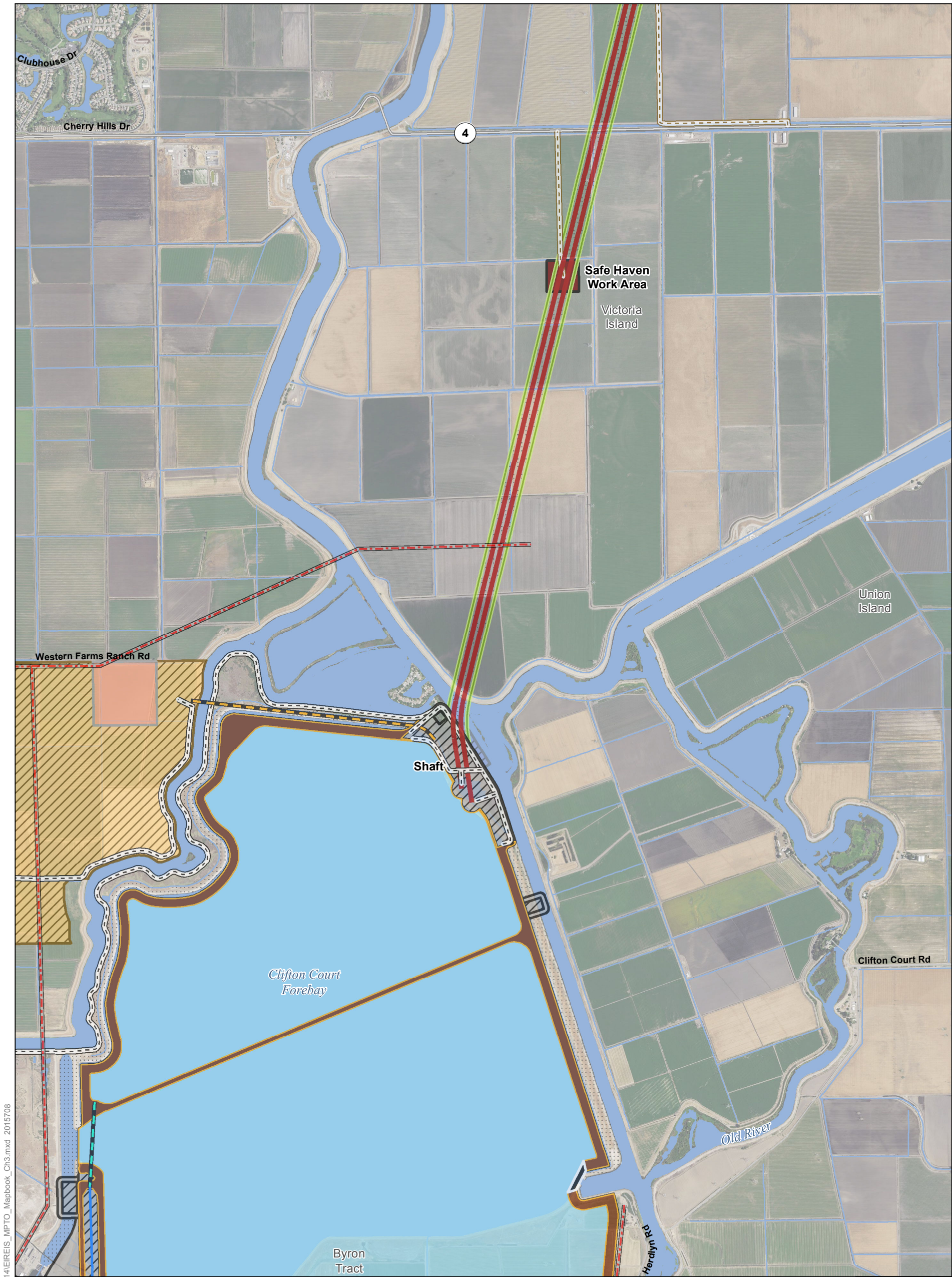


Figure M3-4: Sheet 10 of 15
Modified Pipeline/Tunnel Alignment (Alternative 4)



T:\WGL\38\GIS_33_00\GISRequest_11\FIC\FICF098_14\IREIS_MPTO_Mapbook_Ch3.mxd 2015708

Legend

Plan Area

Areas of Additional Analysis
(Outside of Legal Delta; for Power Only)

Interconnection Point

Proposed Permanent OH Transmission Line

Proposed Temporary OH Transmission Line

Canal

Operable Barrier

Permanent Access Road

Siphon

Temporary Access Road

Tunnel

Tunnel Conveyor

Dredging

Forebay

Forebay Embankment

Forebay Overflow

Intake

Geotech Planning Area

*Proposed Subsurface Easement

**Proposed Permanent Surface Impact

Proposed Temporary Surface Impact

Proposed Potential Borrow And/Or Spoil

Reusable Tunnel Material Area

Barge Unloading Facility

Safe Haven Work Area

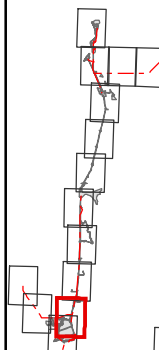
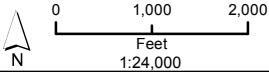
Fuel Station

Concrete Batch Plant

*Surface impacts are not expected to result from subsurface features.

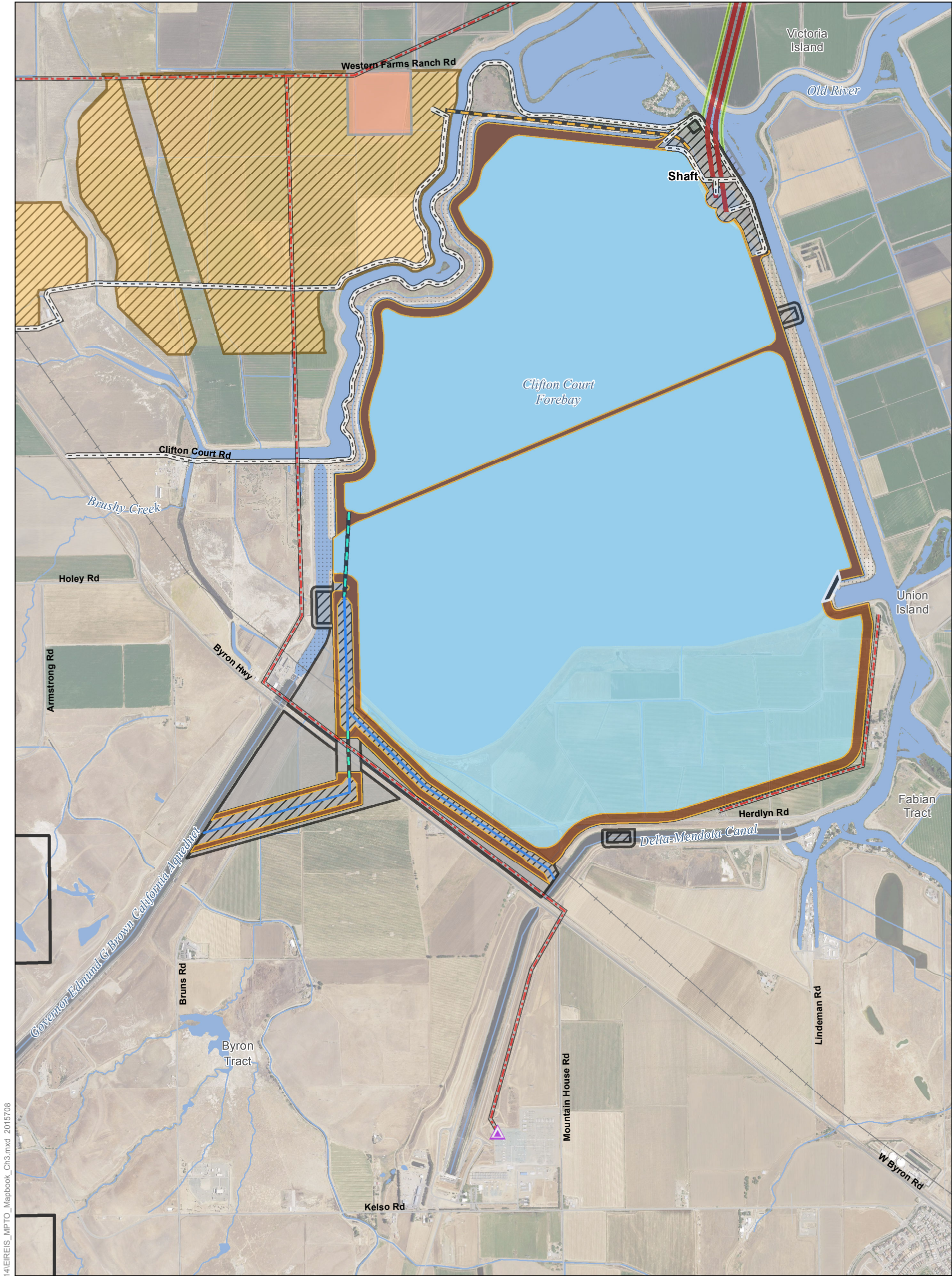
**In-river features are not a permanent impact to navigation.

***Surface impacts will only occur at sites selected for geotechnical explorations. See Ch. 3, Section 3.6.1.10 for more information



Sources: Plan Area, SAIC 2010; DWR DHCCP Engineering (rev 5a); NAIP 2014

Figure M3-4: Sheet 11 of 15
Modified Pipeline/Tunnel Alignment (Alternative 4)



T:\WGL\38\GIS_33_00\GISRequest_11\FIC\FICF098_14\IREIS_MPTO_Mapbook_Ch3.mxd 2015708

Legend

Plan Area

Areas of Additional Analysis
(Outside of Legal Delta; for Power Only)

Interconnection Point

Proposed Permanent OH Transmission Line

Proposed Temporary OH Transmission Line

Canal

Operable Barrier

Permanent Access Road

Siphon

Temporary Access Road

Tunnel

Tunnel Conveyor

Dredging

Forebay

Forebay Embankment

Forebay Overflow

Intake

Geotech Planning Area

*Proposed Subsurface Easement

**Proposed Permanent Surface Impact

Proposed Temporary Surface Impact

Proposed Potential Borrow And/Or Spoil

Reusable Tunnel Material Area

Barge Unloading Facility

Safe Haven Work Area

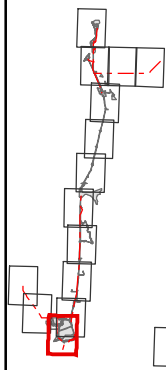
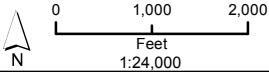
Fuel Station

Concrete Batch Plant

*Surface impacts are not expected to result from subsurface features.

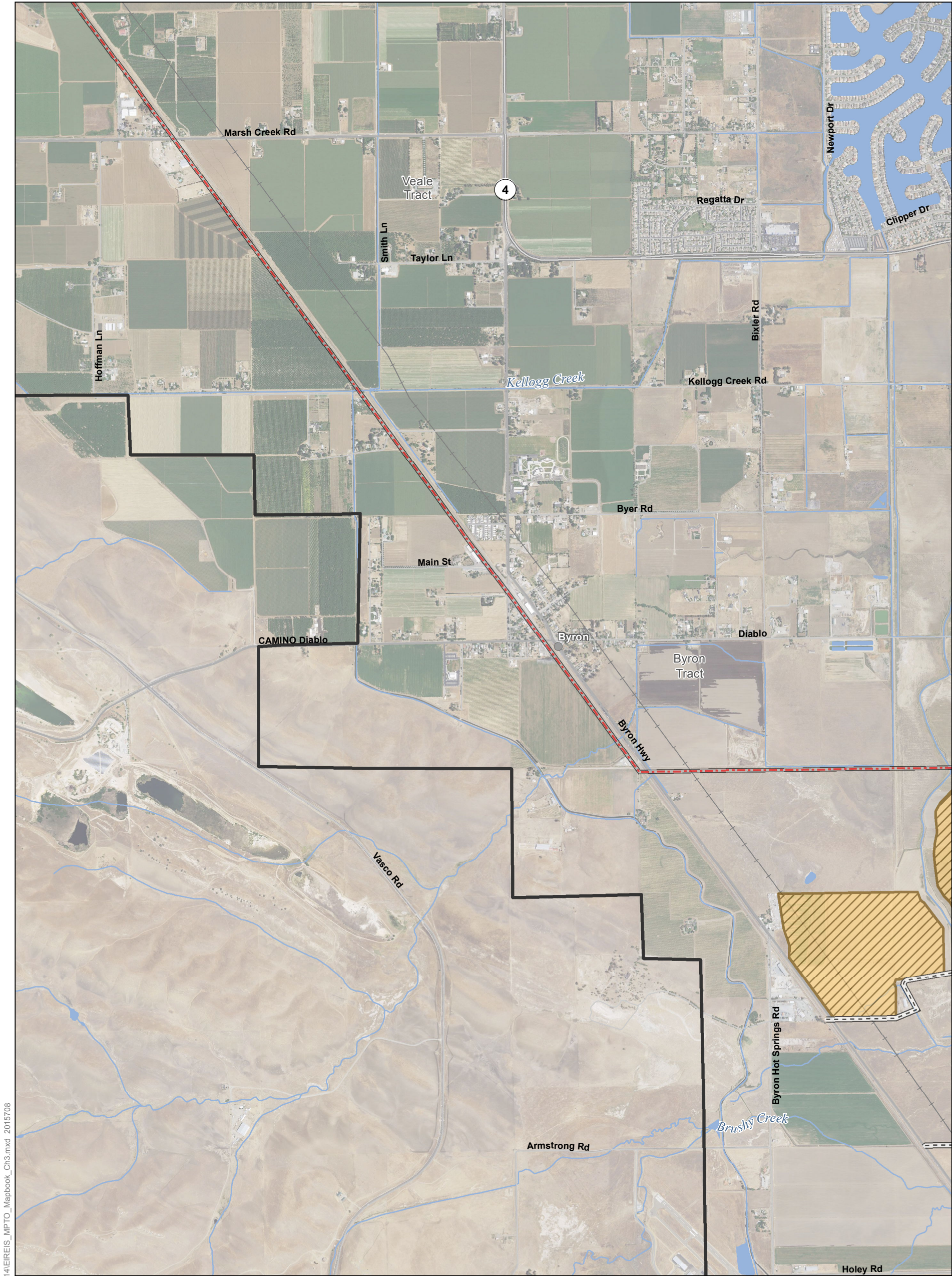
**In-river features are not a permanent impact to navigation.

***Surface impacts will only occur at sites selected for geotechnical explorations. See Ch. 3, Section 3.6.1.10 for more information



Sources: Plan Area, SAIC 2010; DWR DHCCP Engineering (rev 5a); NAIP 2014

Figure M3-4: Sheet 12 of 15
Modified Pipeline/Tunnel Alignment (Alternative 4)

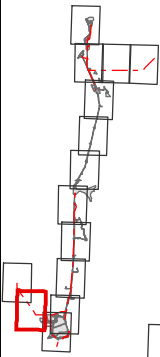
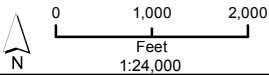


T:\WGL-38\GIS_33_00\GISRequest_11\FIC\FICF098_14\IEIREIS_MPTO_Mapbook_Ch3.mxd 2015708

Legend

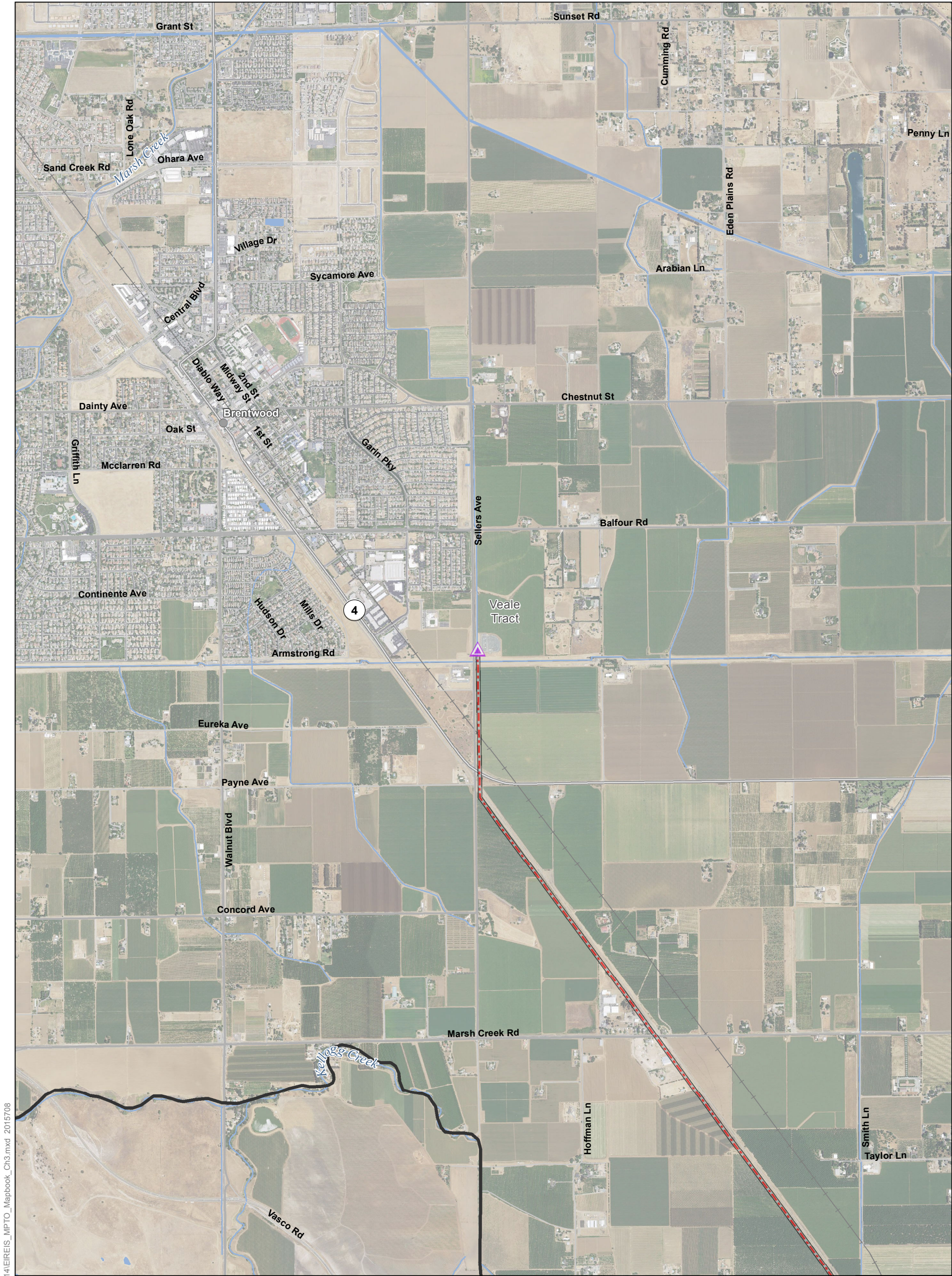
- | | | | |
|--|-----------------------|-----------------------|--|
| Plan Area | Canal | Dredging | *Proposed Subsurface Easement |
| Areas of Additional Analysis
(Outside of Legal Delta; for Power Only) | Operable Barrier | Forebay | **Proposed Permanent Surface Impact |
| Interconnection Point | Permanent Access Road | Forebay Embankment | Proposed Temporary Surface Impact |
| Proposed Permanent OH Transmission Line | Siphon | Forebay Overflow | Proposed Potential Borrow And/Or Spoil |
| Proposed Temporary OH Transmission Line | Temporary Access Road | Intake | Reusable Tunnel Material Area |
| | Tunnel | Geotech Planning Area | Barge Unloading Facility |
| | Tunnel Conveyor | | Safe Haven Work Area |
| | | | Fuel Station |
| | | | Concrete Batch Plant |

*Surface impacts are not expected to result from subsurface features.
**In-river features are not a permanent impact to navigation.
***Surface impacts will only occur at sites selected for geotechnical explorations.
See Ch. 3, Section 3.6.1.10 for more information



Sources: Plan Area, SAIC 2010; DWR DHCCP Engineering (rev 5a); NAIP 2014

Figure M3-4: Sheet 13 of 15
Modified Pipeline/Tunnel Alignment (Alternative 4)

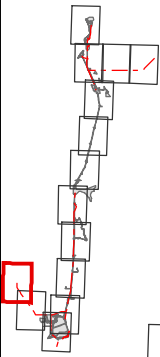
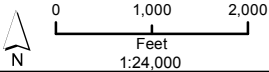


T:\WGL\GIS\33_00\GISRequest_11\FIC\FICF098_14\IEREIS_MPTO_Mapbook_Ch3.mxd 2015708

Legend

- | | | | |
|--|-----------------------|----------------------|--|
| Plan Area | Canal | Dredging | *Proposed Subsurface Easement |
| Areas of Additional Analysis
(Outside of Legal Delta; for Power Only) | Operable Barrier | Forebay | **Proposed Permanent Surface Impact |
| Interconnection Point | Permanent Access Road | Forebay Embankment | Proposed Temporary Surface Impact |
| Proposed Permanent OH Transmission Line | Siphon | Forebay Overflow | Proposed Potential Borrow And/Or Spoil |
| Proposed Temporary OH Transmission Line | Temporary Access Road | Intake | Reusable Tunnel Material Area |
| | Geotech Planning Area | Tunnel | Barge Unloading Facility |
| | Tunnel Conveyor | Safe Haven Work Area | Fuel Station |
| | | Concrete Batch Plant | |

*Surface impacts are not expected to result from subsurface features.
**In-river features are not a permanent impact to navigation.
***Surface impacts will only occur at sites selected for geotechnical explorations.
See Ch. 3, Section 3.6.1.10 for more information



Sources: Plan Area, SAIC 2010; DWR DHCCP Engineering (rev 5a); NAIP 2014

Figure M3-4: Sheet 14 of 15
Modified Pipeline/Tunnel Alignment (Alternative 4)

